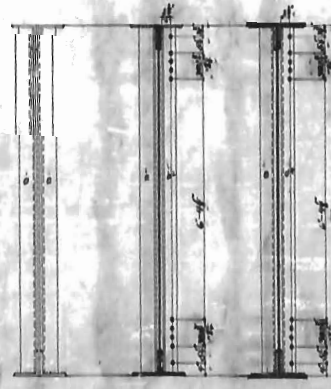
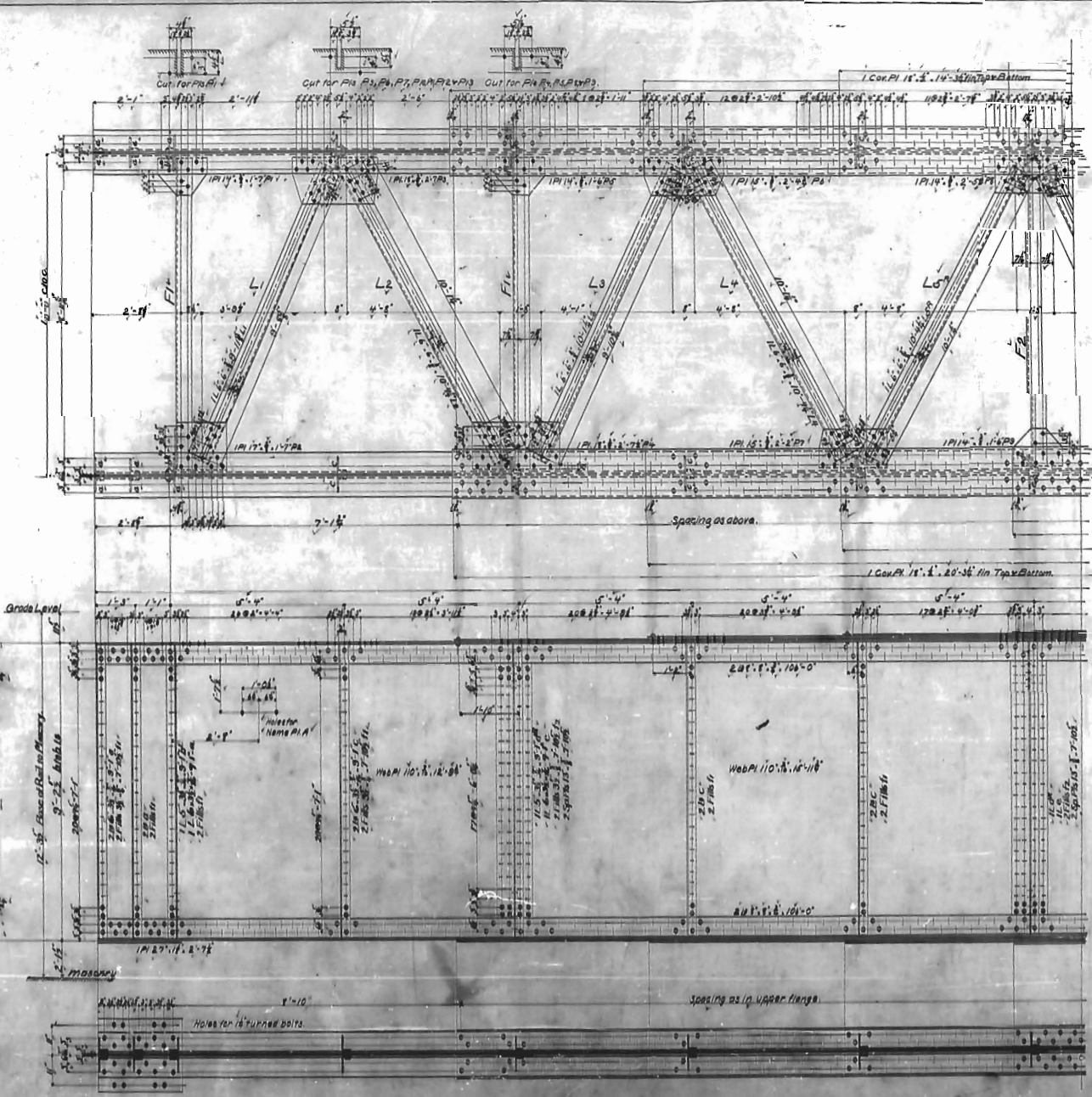


2 - 10' Deck Girders			
1/4	110.0	Wabs	12.00
1/2			12.00
3/4			12.00
1	18.0	Con. Pl.	49.38
1 1/4			59.11
1 1/2			57.14
1 3/4			43.38
2			19.38
2 1/4	13.0	Sp. Pl.	7.00
2 1/2	27.0	Sp. Pl.	2.72
2 3/4	6.0	Sp. Pl.	9.10
3	5.0	Sp. Pl.	9.10
3 1/4	3.0	Sp. Pl.	7.00
3 1/2	6.0	Sp. Pl.	9.10
3 3/4	5.0	Sp. Pl.	9.10
4	3.0	Sp. Pl.	7.00

Lateral Plates			
2	6.0	L1	L1
2	10.0	L2	L2
2	10.0	L3	L3
2	10.0	L4	L4
2	10.0	L5	L5
2	10.0	L6	L6
2	10.0	L7	L7
2	14.0	L8	L8
2	17.0	L9	L9
2	18.0	L10	L10
2	14.0	L11	L11
2	15.0	L12	L12
2	14.0	L13	L13
2	15.0	L14	L14
2	14.0	L15	L15
2	15.0	L16	L16
2	14.0	L17	L17
2	15.0	L18	L18
2	14.0	L19	L19
2	15.0	L20	L20
2	14.0	L21	L21
2	15.0	L22	L22
2	14.0	L23	L23
2	15.0	L24	L24



Rocky River Crossing  
 Southern Railway  
 1-Deck Flange Girder Span 106'-0"  
 Scale 1/4" = 1'-0"

S.W.H. 2-20-02  
 107 3-7-02  
 J.G. Cowley  
 A.B.O.

15

H.B. 1000