

**STATE OF NORTH CAROLINA
DEPARTMENT OF TRANSPORTATION**

**SIGNING PLAN
WILSON COUNTY**

**LOCATION: BRIDGE NO. 65 OVER A SWAMP OF CONTENTNEA CK OVERFLOW/WIGGINS
MILL RESERVOIR ON SR 1163 (DOWNING ROAD) IN WILSON**

TIP NO. B-5126	SHEET NO. SIGN-1
APPROVED: <i>[Signature]</i>	
DATE: 2-5-13	
SEAL	

T.I.P.: B-5126

CONTRACT:

SUMMARY OF QUANTITIES

ITEM NO.		ITEM DESCRIPTION	QUANTITY	UNIT
DESC. NO.	SECT. NO.			
4072000000	903	SUPPORTS, 3 LB STEEL U-CHANNEL	13	L.F.
4102000000	904	SIGN ERECTION, TYPE E	1	EA.
4155000000	907	DISPOSAL OF SIGN SYSTEM, U-CHANNEL	4	EA.
4158000000	907	DISPOSAL OF SIGN SYSTEM, WOOD	3	EA.

GENERAL NOTES

- . SIGNS FURNISHED BY STATE
- . IF REMOVAL OR RELOCATION OF SIGNS ON PRIVATE STREET (NON-STATE MAINTAINED) IS REQUIRED DUE TO CONSTRUCTION, THE CONTRACTOR SHALL INFORM THE ENGINEER. THE WORK WILL BE COMPLETED BY OTHERS.
- . WHEN NOT STATIONED OR DIMENSIONED ON PLANS, ALL 'E' AND 'F' SIGNS SHALL BE FIELD LOCATED BY THE ENGINEER
- . ALL EXISTING SIGNS ON "U" CHANNEL POST WITHIN THE PROJECT LIMITS SHALL BE REMOVED AND DISPOSED OF UNLESS OTHERWISE NOTED ON PLANS.
- . WHEN EXISTING SIGNS ARE REMOVED AND INSTALLED ON NEW SUPPORTS, THE RE-ERECTION SHALL IMMEDIATELY FOLLOW THE REMOVAL.
- . THE BACKGROUND FOR TYPE E & F SIGNS SHALL BE TYPE C REFLECTIVE SHEETING.
- . SEE ROADWAY PLANS FOR GUARD/GUIDE RAIL DETAILS.

ROADWAY STANDARD DRAWING

THE FOLLOWING ROADWAY STANDARDS AS APPEAR IN "ROADWAY STANDARD DRAWINGS" - PROJECT SERVICES UNIT - N.C. DEPARTMENT OF TRANSPORTATION - RALEIGH, N.C., DATED JANUARY 2012 ARE APPLICABLE TO THIS PROJECT AND BY REFERENCE HEREBY ARE CONSIDERED A PART OF THESE PLANS:

STD. NO.	TITLE
904.10	ORIENTATION OF GROUND MOUNTED SIGNS
904.50	MOUNTING OF TYPE 'D', 'E' AND 'F' SIGNS ON 'U' CHANNEL POSTS

NOTES

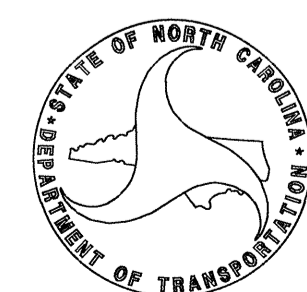
- 1) DISPOSAL OF SIGN SYSTEM, U CHANNEL
- 2) DISPOSAL OF SIGN SYSTEM, WOOD

INDEX

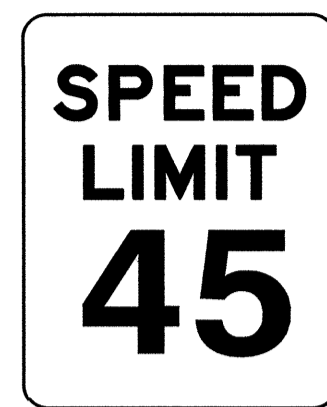
SHEET NO.	DESCRIPTION
SIGN-1	TITLE SHEET
SIGN-2	SIGN DETAIL SHEET

PLAN PREPARED BY: N.C.D.O.T. SIGNING AND DELINEATION UNIT

AYMAN ALQUDWAH, PE, CPM, SIGNING & DELINEATION REGIONAL ENGINEER
BASIR A. RASHID SIGNING & DELINEATION PROJECT DESIGN ENGINEER



401 QUANTITY REQ'D 1



24" X 30"
R2-1

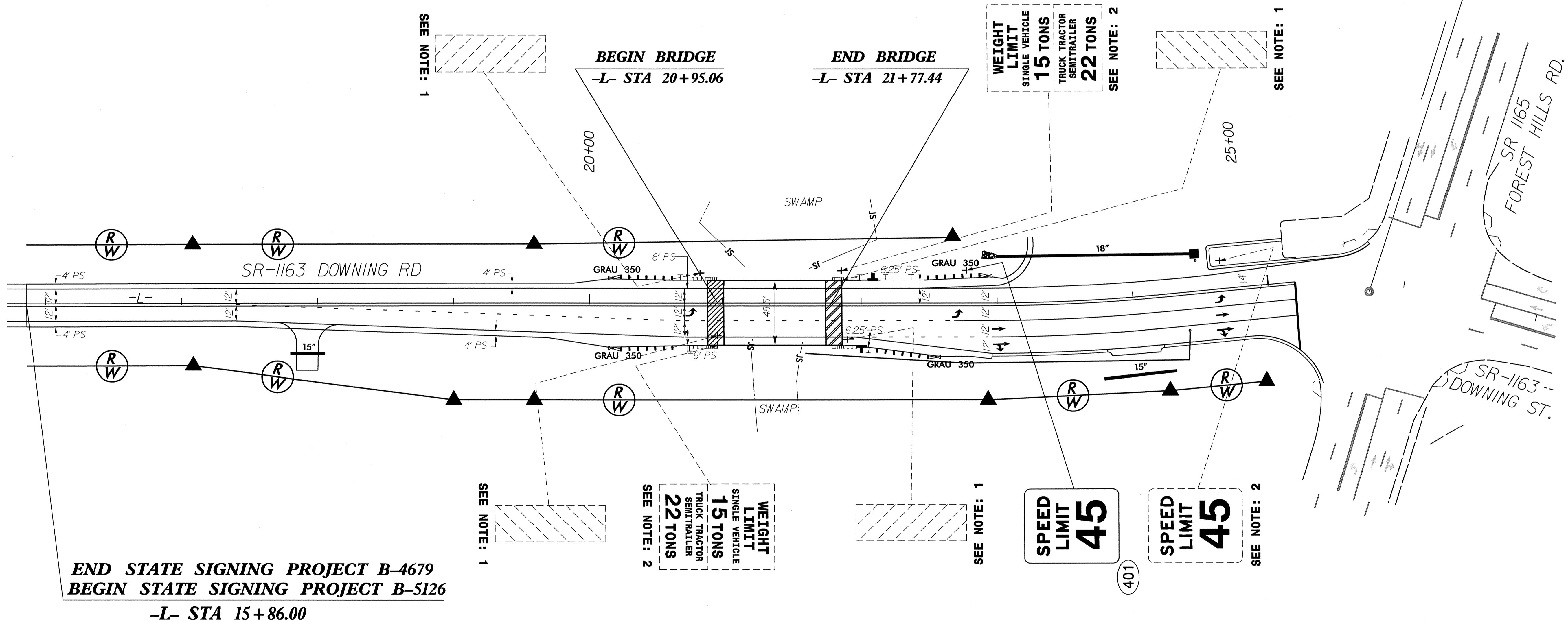
ONE "U" POST PER SIGN

TYPE "E" SIGN

TIP NO. B-5126	SHEET NO. SIGN-2
APPROVED: <i>[Signature]</i>	
DATE: 2-5-13	
SEAL	

END STATE SIGNING PROJECT B-5126

-L- STA 25+75.00



**END STATE SIGNING PROJECT B-4679
BEGIN STATE SIGNING PROJECT B-5126**
-L- STA 15+86.00

**EXISTING AND PROPOSED SIGNS
STA. 15+86.00 TO STA. 25+75.00 -L-
SR 1163 (DOWNING ROAD)**

11-JAN-2013 03:56
P:\TIP\Projects\B-5126\Traffic\Signing\CADD\Signing Layout Plans\B-5126-Sgn-SGN-SHEET-2.dgn
created AT 12:47:53