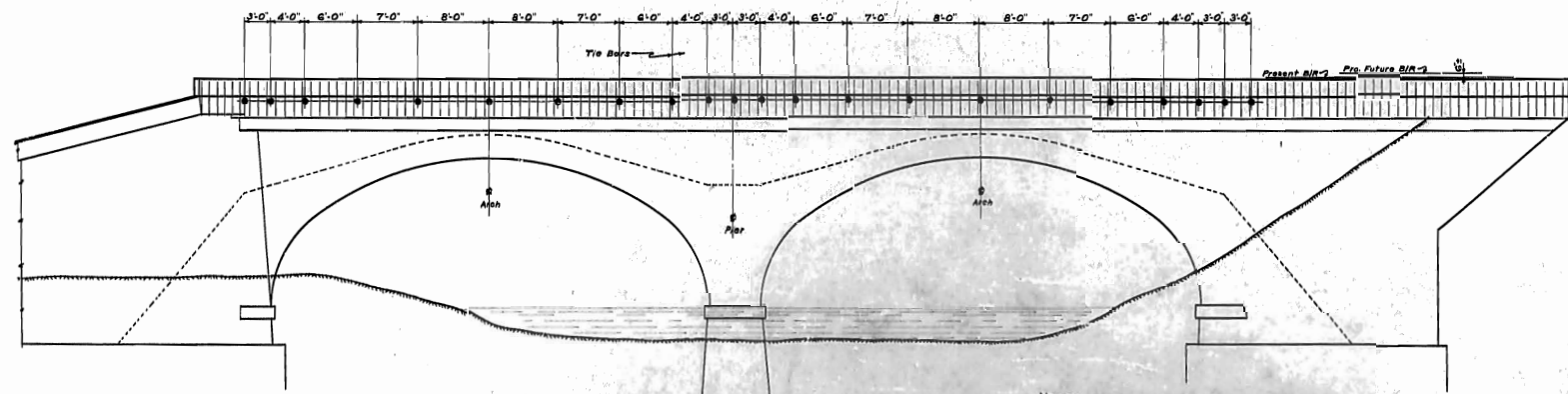
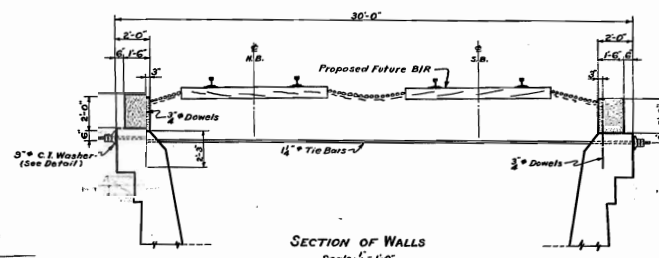


PLAN

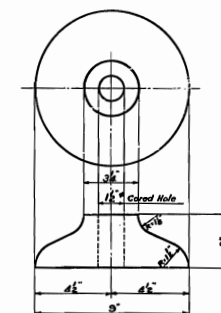


ELEVATION

NOTE:
 Tie Bars to be wrought iron, 1/2" diam (plain). Threaded 12" on each end.
 Bars to be coated with bituminous solution between threaded ends. Threads, nuts, and washers to be treated with No. 10 zinc.
 Concrete shall be proportioned by the water-cement ratio method, using 2 1/2 gallons of water per sack of cement, including moisture contained in the aggregates. Proportions of aggregates to be determined by trial mixing to produce a workable mixture with 3 slump.
 All exterior corners and edges of concrete to be chamfered 1".



SECTION OF WALLS
 Scale: 1/4" = 1'-0"



DETAIL OF CAST IRON WASHER
 Scale: 1/2" = 1"

BILL OF MATERIAL			
No. Pos.	Description	Length	Mark
279	3/4" Dowels	4'-0"	
28	1/2" Tie Bars with 4 Res. Nuts	30'-0"	See Note
44	C.I. Washers 5" diam. 3/16"		See Detail

Southern Railway Company
 Eastern Lines
 Plan for Topping Present Parapet Walls
 RICHFORK CREEK M.P. 313.0
 Revised 11'-11" unless noted March 31, 1947
 DWG. No. 5701

Office of Chief Engineer M.W. & S. Charlette, K.C.

C.E. File: B-2534
 Note Book 13