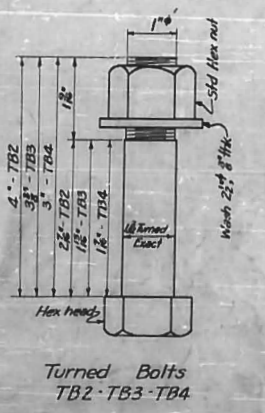
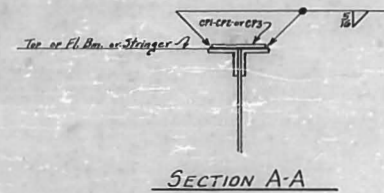
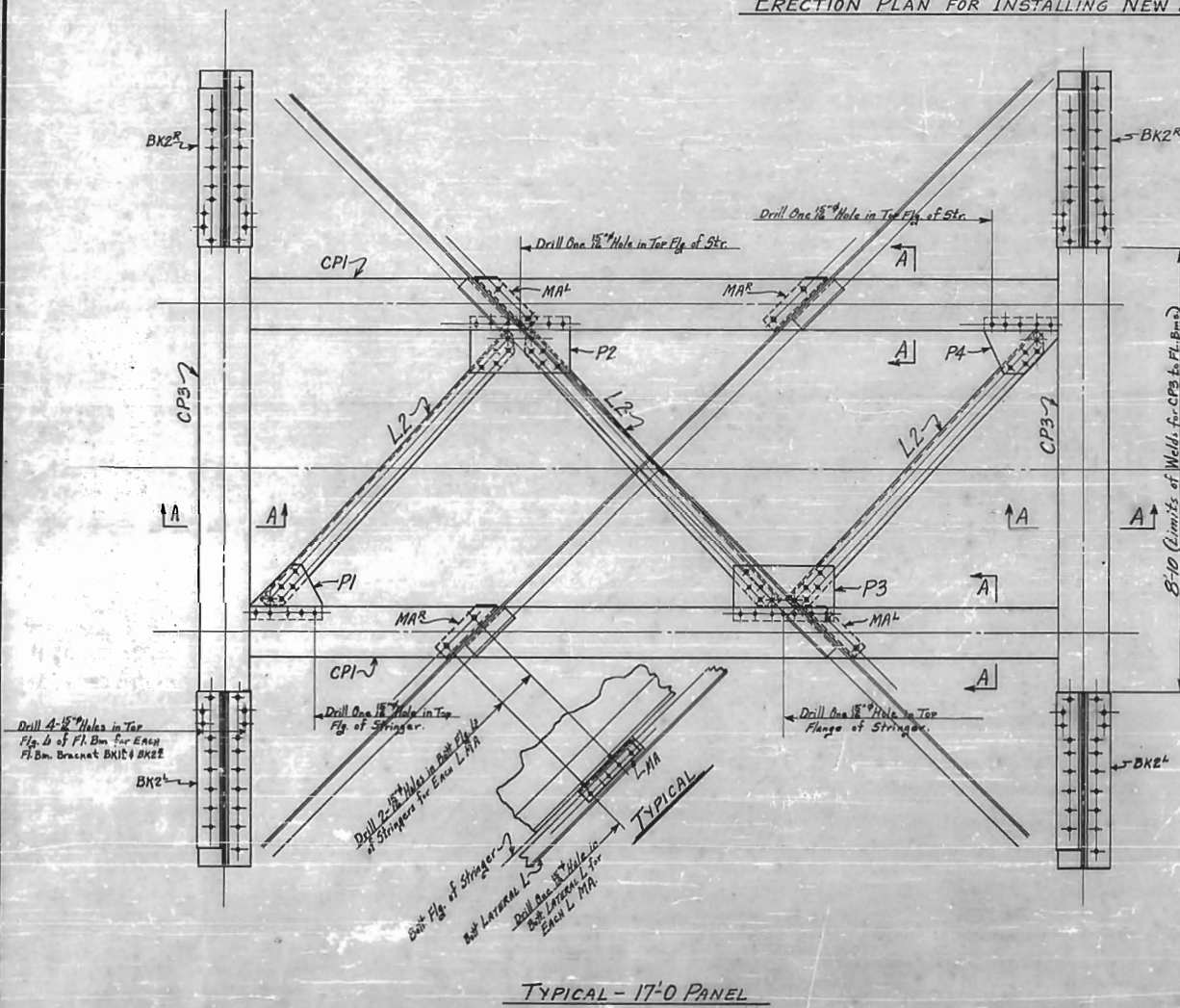
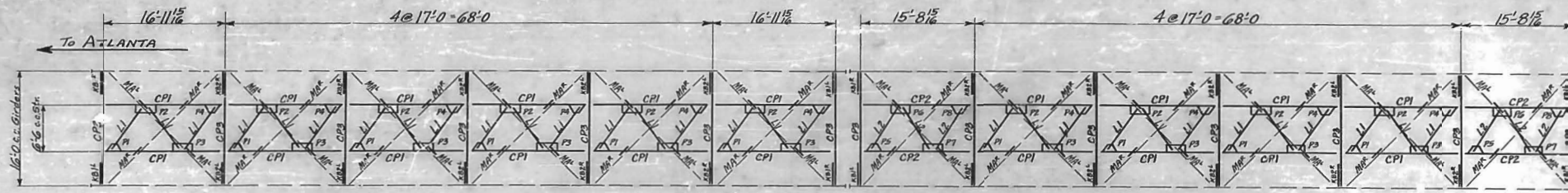


| No  | Description       | Mark |
|-----|-------------------|------|
| 8   | Girder Extensions | GE1  |
| 4   | Top Shoes         | TS1  |
| 4   | Expansion Rockers | ER1  |
| 4   | Fixed Shoes       | FS1  |
| 4   | Bearing Plates    | BB1  |
| 4   | Sheet Lead        | SL1  |
| 8   | Pins              | PI   |
| 16  | Turned Bolts      | TBI  |
| 16  | Turned Bolts      | TB2  |
| 24  | Turned Bolts      | TB3  |
| 104 | Turned Bolts      | TB4  |
| 16  | Anchor Bolts      | AB1  |
| 16  | Anchor Bolts      | AB2  |
| 4   | Top Shoes         | TS2  |
| 16  | Turned Bolts      | TB5  |



**General Notes -**  
 Specifications - Current AREA  
 Material - Old Structural Steel except as noted  
 Shop paint - One coat of red lead and inside oil except finished surfaces to be coated with white lead and tallow  
 Open holes as noted  
 Rivets - 3"

Southern Railway Company  
 Eastern Lines  
 Detail of Shoes and Girder Extensions  
 for Thru Girder Under South Bound Track  
 Abbotts Creek MP 313.4  
 Scale 1/2" = 1'-0"  
 June 12, 1947  
 Dwg No - G760  
 Office of Chief Engineer, MW #5, Charlotte, NC.



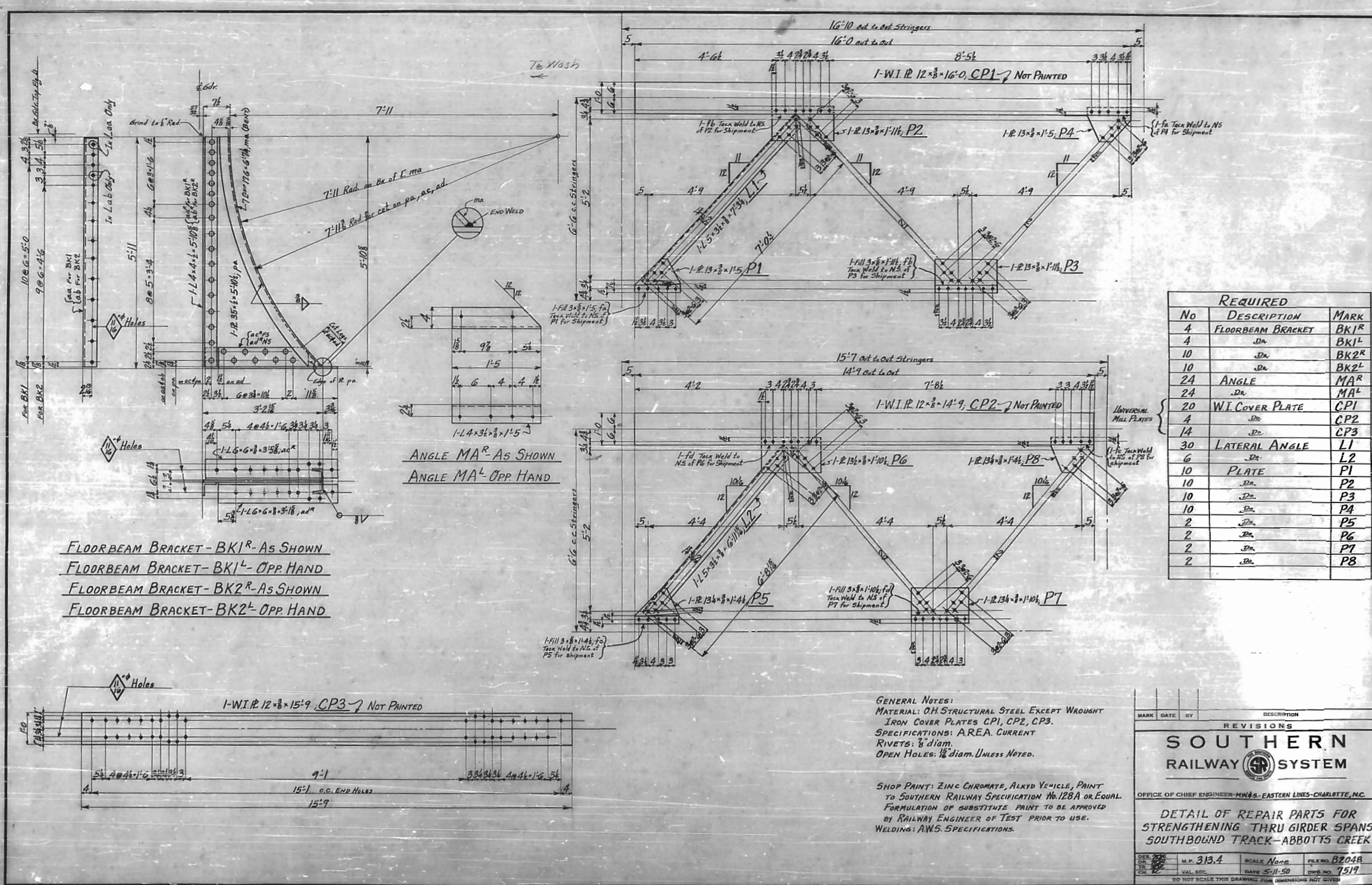
**PROCEDURE OF WORK**

**FLOORBEAMS**-Place floorbeam Cover Plates and floorbeam Brackets bolting ends of cover plates with undersized bolts (preferably 3/4" dia.) Field Weld edges of Cover Plates.  
Ream Holes from far side of Girders.  
Drive Rivets.  
**IMPORTANT: WORK MUST BE ARRANGED SO THAT ALL FLOORBEAM BRACKETS ARE IN PLACE AND CONNECTED DURING PASSAGE OF TRAINS.**

**STRINGERS**-Cut out rivets connecting stringer lateral plates to Top Flange Angles and replace with bolts.  
Place cover plates, new stringer laterals and lateral plates; Rebolt and weld cover plates to Top Flange ANGLES.  
Ream Holes, if necessary, and drive rivets.  
**IMPORTANT: WORK MUST BE ARRANGED SO THAT STRINGER FLANGES ARE BOLTED DURING PASSAGE OF TRAINS.**

FIELD CONNECTIONS RIVETED.  
WELDING - AWS Specifications.  
Drilling in Existing MATERIAL shall be done after New MATERIAL is assembled in PLACE - using New Material as TEMPLATE.  
EXISTING Floor Beam Brackets and Stringer Laterals and Lateral Plates to be Removed and Discarded.  
TOP Flanges of Stringers and Floor Beams must be thoroughly cleaned of all paint, grease, oil, scale, & rust before new cover plates are installed.

| MARK  | DATE       | BY           | DESCRIPTION    |
|---|------------|--------------|----------------|
| REVISIONS   |            |              |                |
| <b>SOUTHERN RAILWAY SYSTEM</b>  |            |              |                |
| OFFICE OF CHIEF ENGINEER-MW&S-EASTERN LINES-CHARLOTTE, N.C.                     |            |              |                |
| <b>ERECTOR PLAN FOR INSTALLING REPAIR PARTS SOUTHBOUND TRACK-ABBOTT'S CREEK</b> |            |              |                |
| DES. NO.  | M.P. 313.4 | SCALE None   | FILE NO. B2048 |
| TR.   | VAL. SEC.  | DATE 5-15-50 | DWG. NO. 7518  |
| DO NOT SCALE THIS DRAWING FOR DIMENSIONS NOT GIVEN                              |            |              |                |



FLOORBEAM BRACKET - BK1<sup>R</sup> - As SHOWN  
 FLOORBEAM BRACKET - BK1<sup>L</sup> - OPP HAND  
 FLOORBEAM BRACKET - BK2<sup>R</sup> - As SHOWN  
 FLOORBEAM BRACKET - BK2<sup>L</sup> - OPP HAND

ANGLE MA<sup>R</sup> - As SHOWN  
 ANGLE MA<sup>L</sup> - OPP HAND

| REQUIRED |                   |                  |
|----------|-------------------|------------------|
| NO       | DESCRIPTION       | MARK             |
| 4        | FLOORBEAM BRACKET | BK1 <sup>R</sup> |
| 4        | DA                | BK1 <sup>L</sup> |
| 10       | DA                | BK2 <sup>R</sup> |
| 10       | DA                | BK2 <sup>L</sup> |
| 24       | ANGLE             | MA <sup>R</sup>  |
| 24       | DA                | MA <sup>L</sup>  |
| 20       | W.I. COVER PLATE  | CP1              |
| 4        | DA                | CP2              |
| 14       | DA                | CP3              |
| 30       | LATERAL ANGLE     | L1               |
| 6        | DA                | L2               |
| 10       | PLATE             | P1               |
| 10       | DA                | P2               |
| 10       | DA                | P3               |
| 10       | DA                | P4               |
| 2        | DA                | P5               |
| 2        | DA                | P6               |
| 2        | DA                | P7               |
| 2        | DA                | P8               |

GENERAL NOTES:  
 MATERIAL: OH STRUCTURAL STEEL EXCEPT WROUGHT  
 IRON COVER PLATES CP1, CP2, CP3.  
 SPECIFICATIONS: AREA. CURRENT  
 RIVETS: 3/8" diam.  
 OPEN HOLES: 1/8" diam. UNLESS NOTED.

SHOP PRINT: ZINC CHROMATE, ALKYL VEHICLE, PAINT  
 TO SOUTHERN RAILWAY SPECIFICATION No. 128A OR EQUAL  
 FORMULATION OF SUBSTITUTE PAINT TO BE APPROVED  
 BY RAILWAY ENGINEER OF TEST PRIOR TO USE.  
 WELDING: AWS. SPECIFICATIONS.

| MARK  | DATE       | BY       | DESCRIPTION |
|---|------------|----------|-------------|
| REVISIONS   |            |          |             |
| <b>SOUTHERN RAILWAY SYSTEM</b>  |            |          |             |
| OFFICE OF CHIEF ENGINEER-MW&S-EASTERN LINES-CHARLOTTE, N.C.                                     |            |          |             |
| DETAIL OF REPAIR PARTS FOR<br>STRENGTHENING THRU GIRDER SPANS<br>SOUTHBOUND TRACK-ABBOTTS CREEK |            |          |             |
| DES. BY   | M.P. 313.4 | SCALE    | None        |
| VAL. BY   |            | DATE     | 5-11-50     |
| CHK. BY   |            | FILE NO. | B2048       |
|   |            | LINE NO. | 7517        |
| DO NOT SCALE THIS DRAWING FROM PHOTOGRAPH NOT GIVEN   |            |          |             |