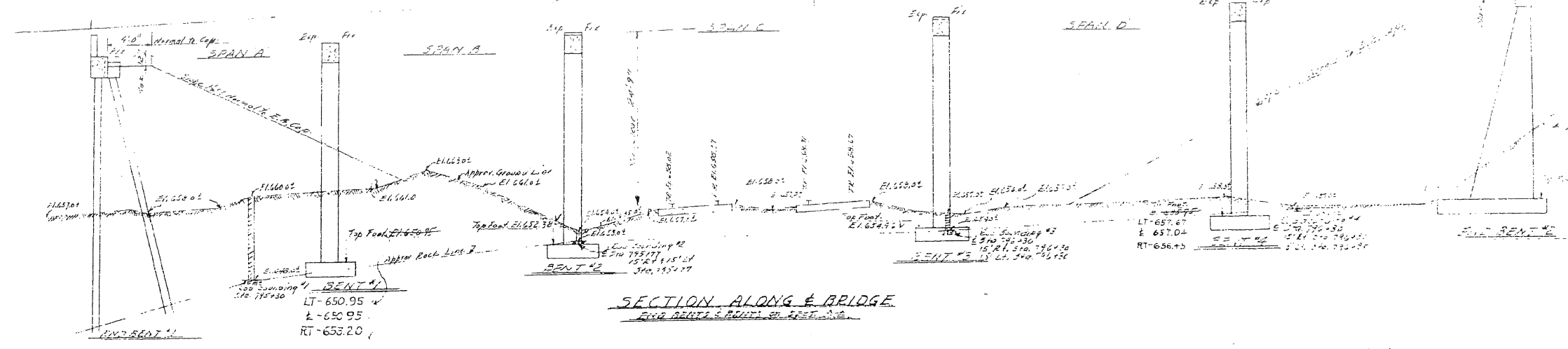
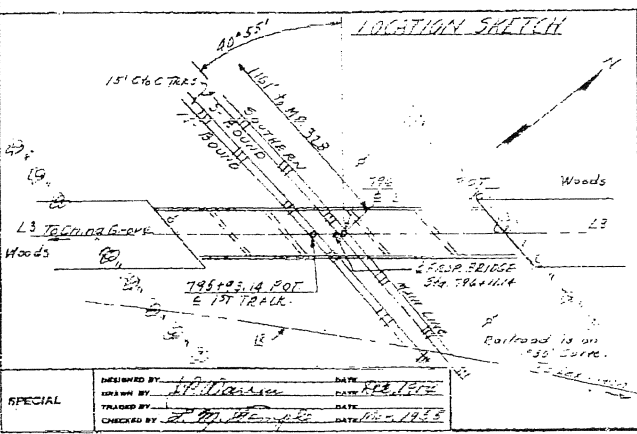
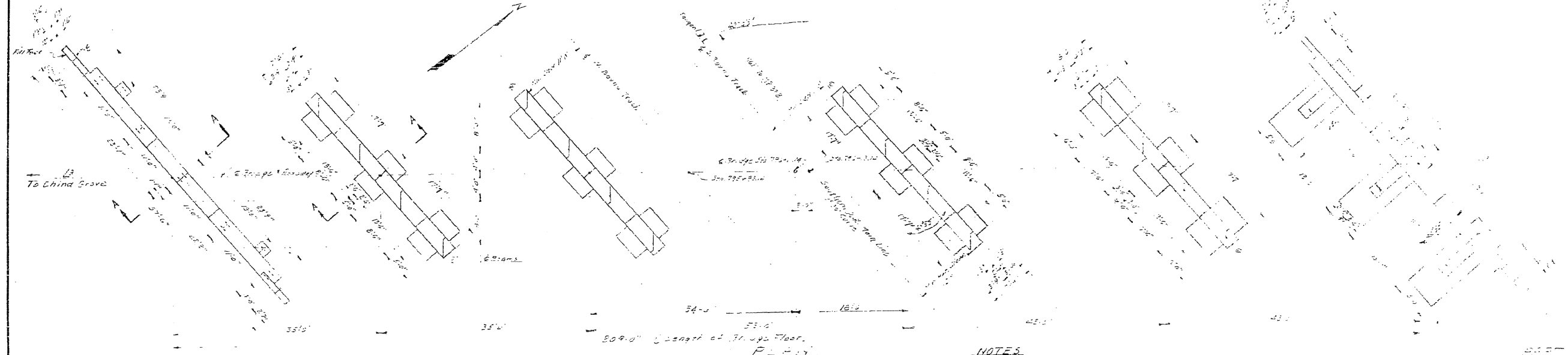


Sta. 795+04.69  
C. E. 601.76



SECTION ALONG E BRIDGE  
FLOOR BEAMS & FOUNDATION DETAILS



STATION 795+04.69  
TOTAL BILL OF MATERIAL - FIVE SPANS

Description	Class A Concrete		Reinf. Steel		Struct. Steel		12HS7 Steel Piles		Unclass. Struct.		Method of Excav.	
	Cu. Yds.	Lbs.	Sq. Ft.	Lin. Ft.	No.	Lin. Ft.	Cu. Yds.	Sq. Yds.	Sq. Yds.	Sq. Yds.	Sq. Yds.	
Superstruct Spans A&B	20.0	5090	39700								11.2 ±	
Do. Span C	47.0	9920	25800									
Do. Span D/E	82.0	1687	20320									
End Bent #1	46.5	3201										
Bent #2	41230	424	7658									
Bent #3	4263	424	2949									
Bent #4	4285	424	2968									
End Bent #2	4265	424	2949									
Approach Slabs	71.1	52	75									
<b>TOTAL</b>	<b>254.5</b>	<b>92270</b>	<b>125100</b>	<b>3</b>	<b>340</b>	<b>375</b>	<b>221 ±</b>					

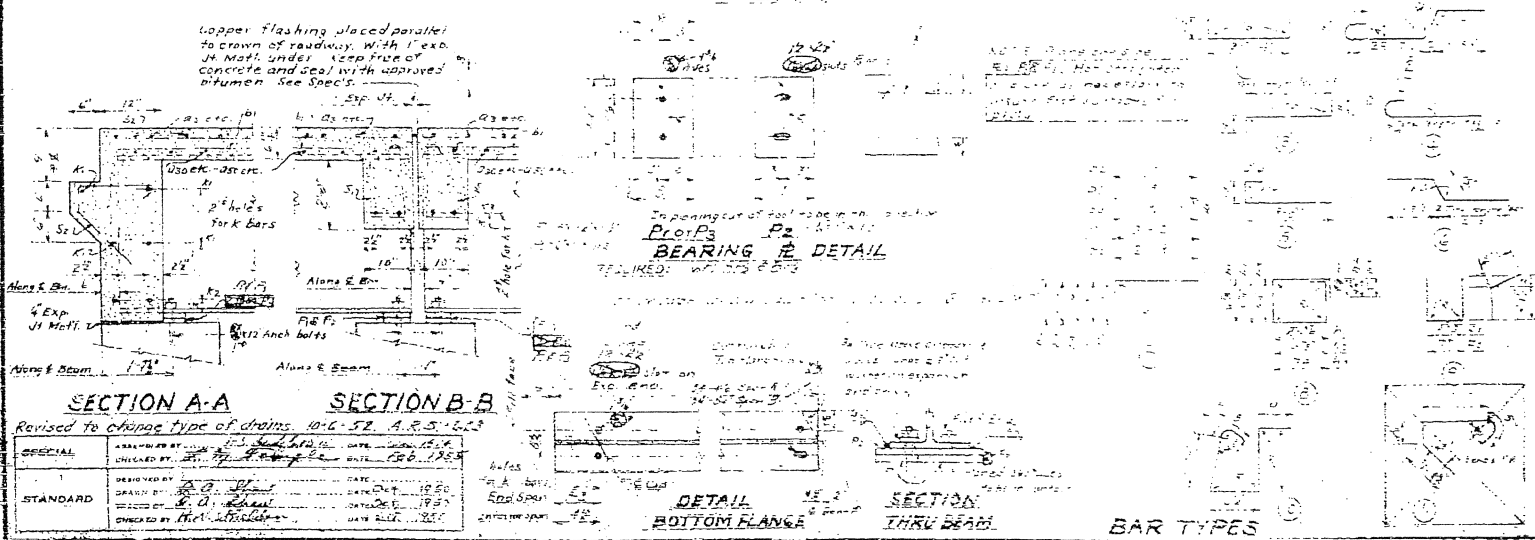
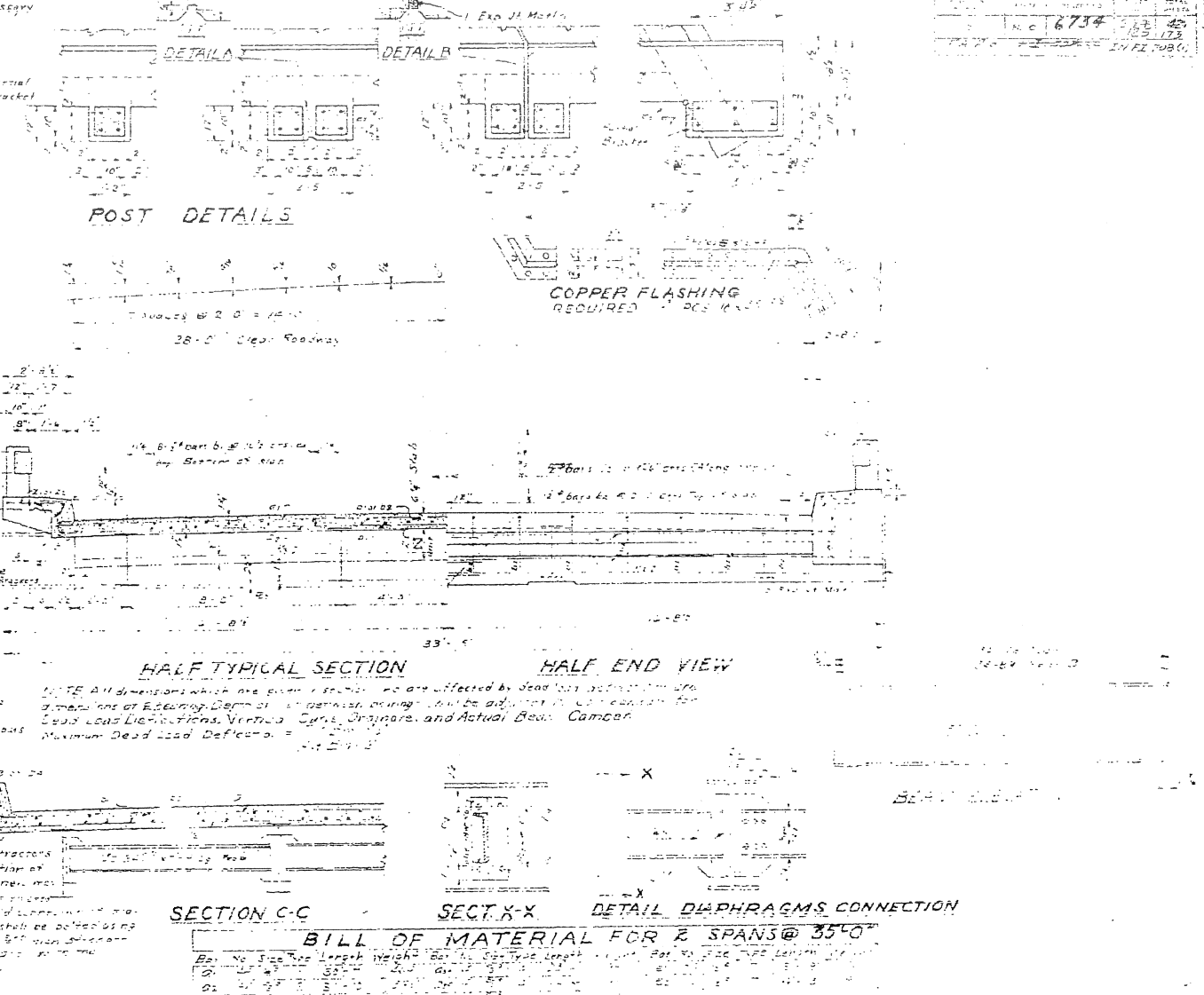
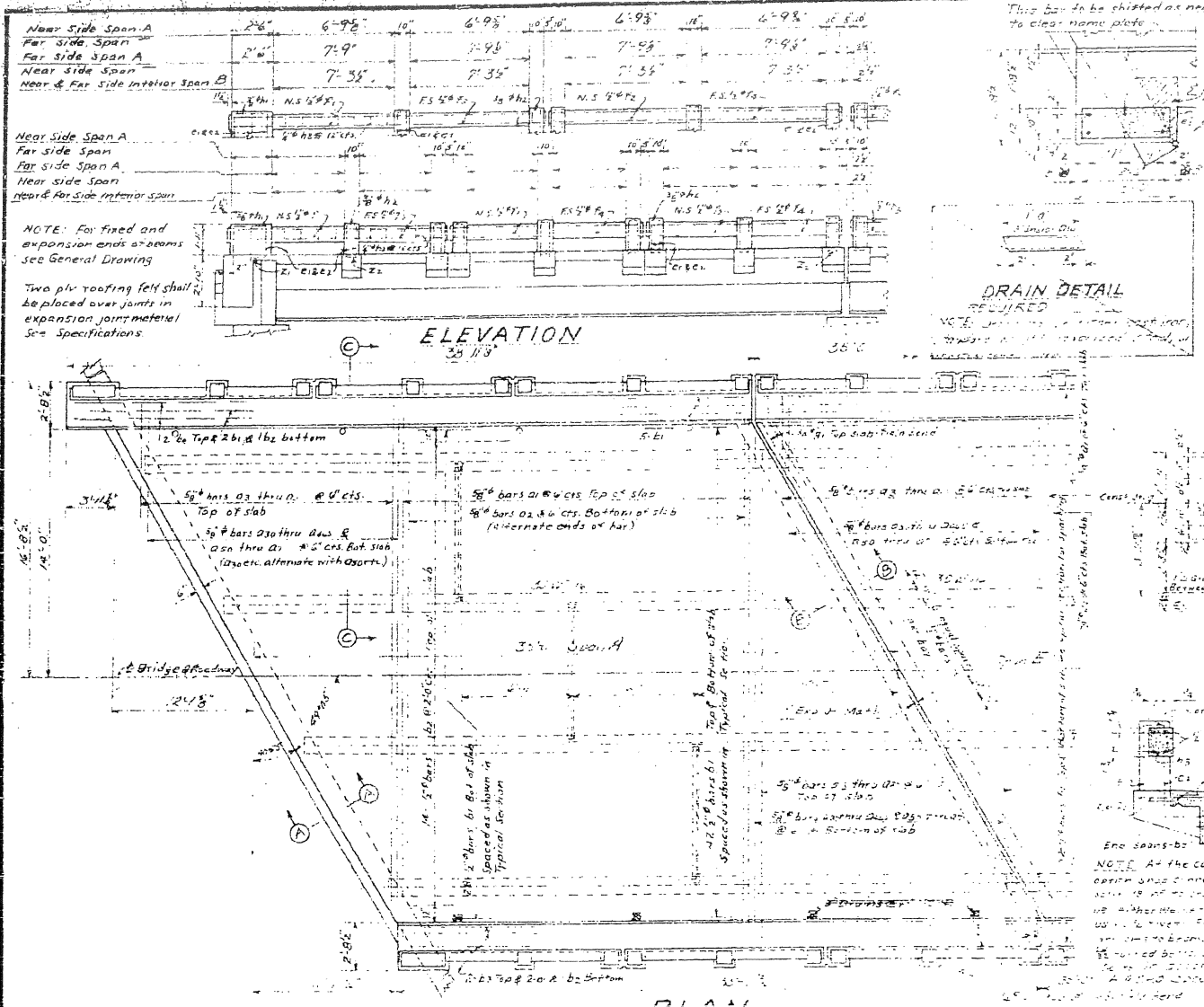
**NOTES:**  
 1. See for End Bent #1 and #2 details on page 2.  
 2. Minimum depth of concrete at least 25" for each completed foundation for:  
 Span #1 = 2' 3" = 2.75' (11.25' dia)  
 Span #2 = 3' 0" = 3.75' (11.25' dia)  
 End Bent #2 = 4' 0" = 4.75' (11.25' dia)  
 For surface work requirements see special provisions.  
 Excavated to 12' Lead = 12.55 ±  
 For other details see "General Notes" and "General Notes" see Sheet 5000.  
 3. See for End Bent #1 to 2 details on page 2.  
 4. Footings for Spans #2, 3, 4 and End Bent #2 to be carried on 12" cast in place rock with minimum thickness shown. Form 2.00 will not be required, other list for piles to be used on 4.00' dia. to 20'.

PROJECT NO. 6734  
 COUNTY: ROSS  
 STATION: 795+11.14 ±

STATE OF NORTH CAROLINA  
 STATE HIGHWAY AND  
 PUBLIC WORKS COMMISSION

SEAL: J. H. HARRIS  
 SALISBURY, N.C.  
 DEC 1933

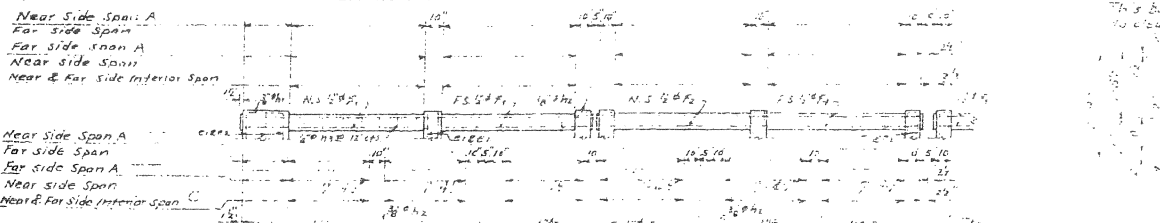
DATE: 12-1-33  
 DRAWN BY: J. H. HARRIS  
 CHECKED BY: J. H. HARRIS



**BILL OF MATERIAL FOR 2 SPANS @ 35°**

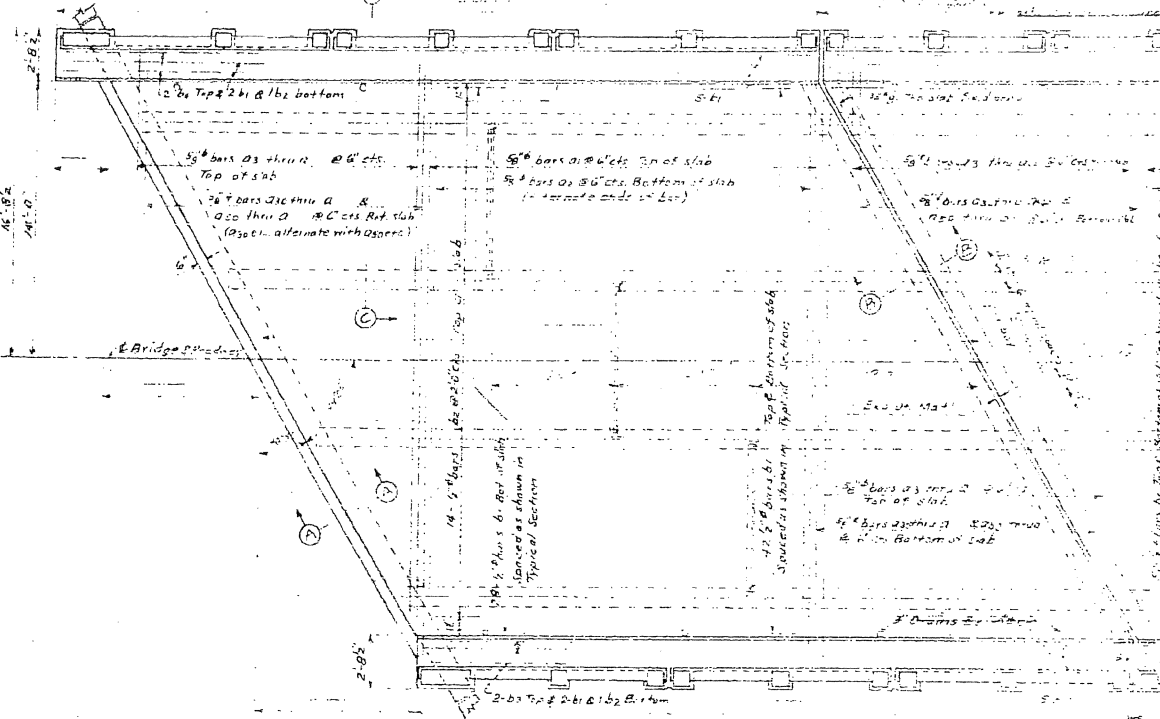
Bar No.	Size	Length	Weight	Bar No.	Size	Length	Weight	Bar No.	Size	Length	Weight
01	1/2"	10.0	1.10	11	1/2"	10.0	1.10	21	1/2"	10.0	1.10
02	1/2"	10.0	1.10	12	1/2"	10.0	1.10	22	1/2"	10.0	1.10
03	1/2"	10.0	1.10	13	1/2"	10.0	1.10	23	1/2"	10.0	1.10
04	1/2"	10.0	1.10	14	1/2"	10.0	1.10	24	1/2"	10.0	1.10
05	1/2"	10.0	1.10	15	1/2"	10.0	1.10	25	1/2"	10.0	1.10
06	1/2"	10.0	1.10	16	1/2"	10.0	1.10	26	1/2"	10.0	1.10
07	1/2"	10.0	1.10	17	1/2"	10.0	1.10	27	1/2"	10.0	1.10
08	1/2"	10.0	1.10	18	1/2"	10.0	1.10	28	1/2"	10.0	1.10
09	1/2"	10.0	1.10	19	1/2"	10.0	1.10	29	1/2"	10.0	1.10
10	1/2"	10.0	1.10	20	1/2"	10.0	1.10	30	1/2"	10.0	1.10

PROJECT NO. 6734  
 ROWAN-DARROW COUNTY  
 STATION: 796+11.14  
 SPAN C & B  
 STATE HIGHWAY 1  
 I.C. WOPAS COMMISSION  
**STANDARD I BEAM SUPERSTRUCTURE WITH R.C. FLOOR & RAIL**  
 28' ROADWAY @ 35° R.H. SKEW  
 OCT. 1950

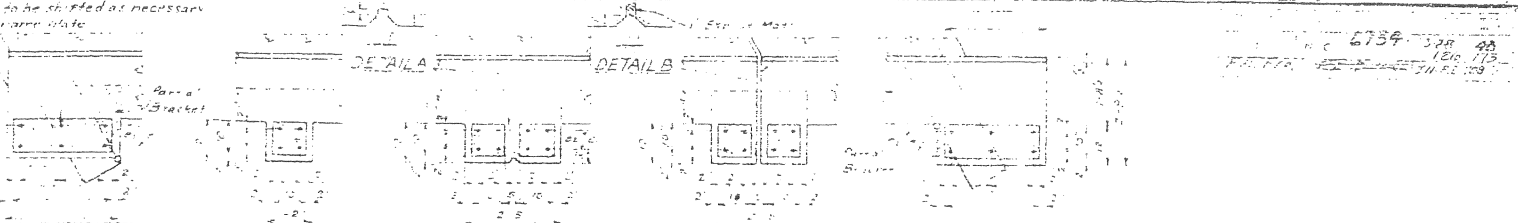


NOTE: For fixed and expansion ends of beams see General Drawing

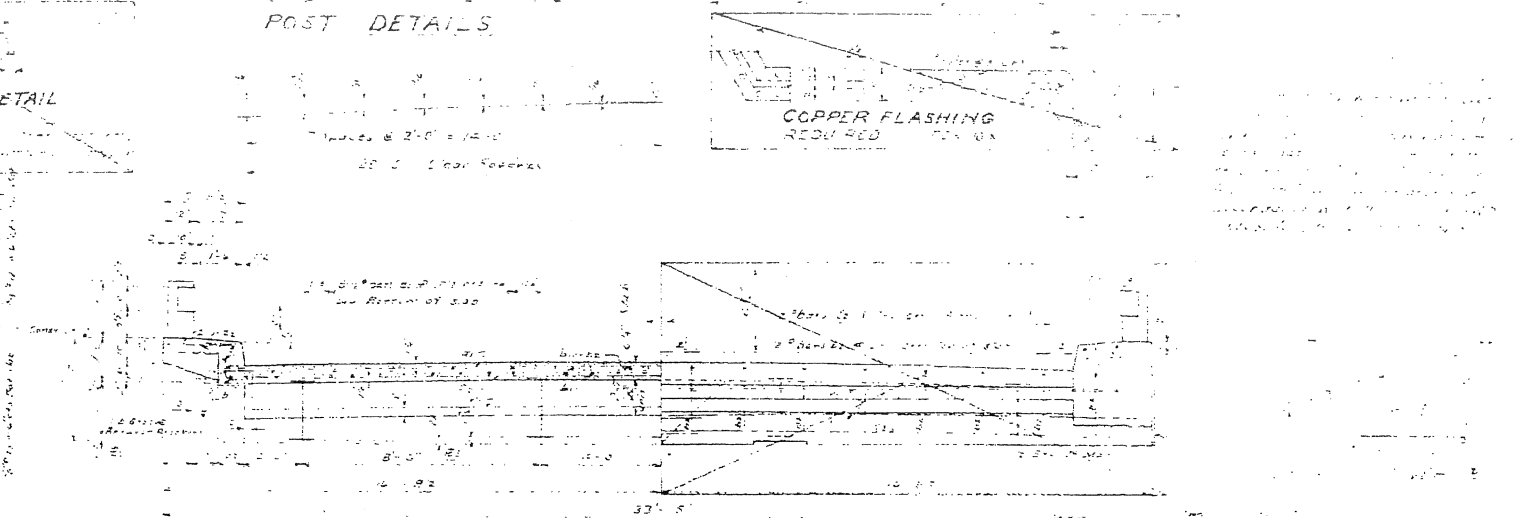
Two ply roofing felt shall be placed over joints in expansion joint material. See Specifications



PLAN

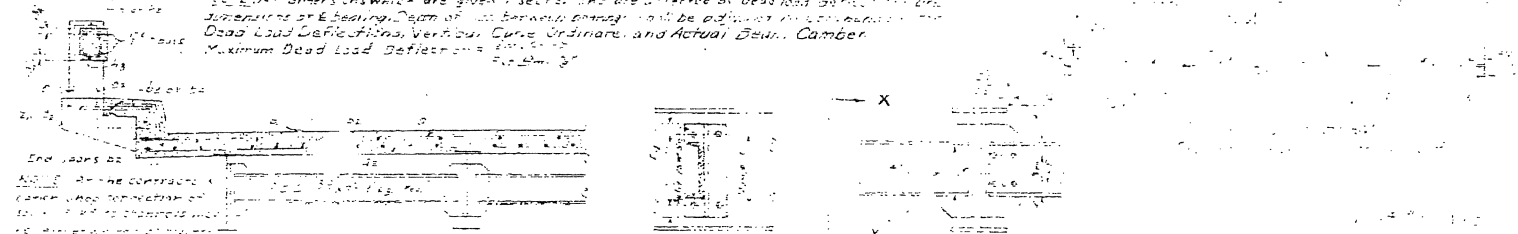


POST DETAILS



HALF TYPICAL SECTION

HALF END VIEW



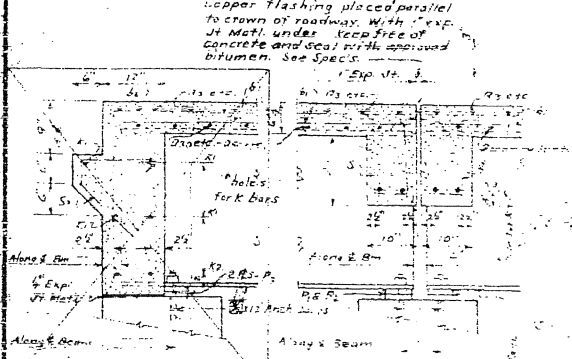
SECTION C-C

SECTION X-X

DETAIL DIAPHRAGMS CONNECTION

BILL OF MATERIAL FOR ONE SPAN @ 33'-0"

QTY	DESCRIPTION	UNIT	QTY	DESCRIPTION	UNIT
12	12" Top #2 & 1/2" bottom	lb	12	12" Top #2 & 1/2" bottom	lb
...	...	...	...	...	...



SECTION A-A

SECTION B-B

Revised to change type of abutts. 10-6-52 J.R.S. G.S.

DESIGNED BY: J.P. ... DATE: 10-6-52

CHECKED BY: H.L. ... DATE: 10-6-52

BEARING & DETAIL

DETAIL BOTTOM FLANGE

SECTION THRU BEAM

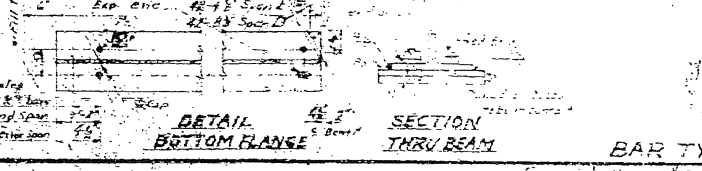
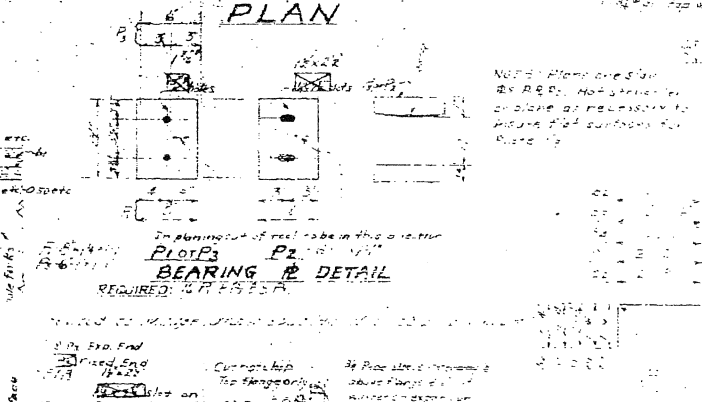
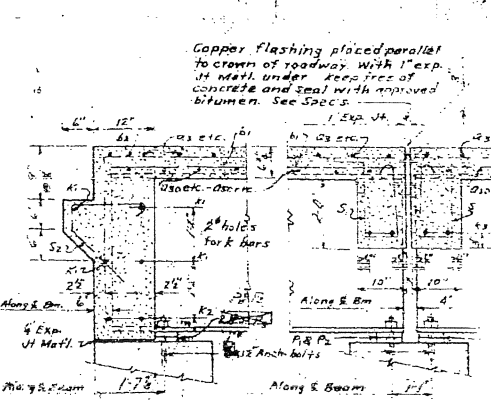
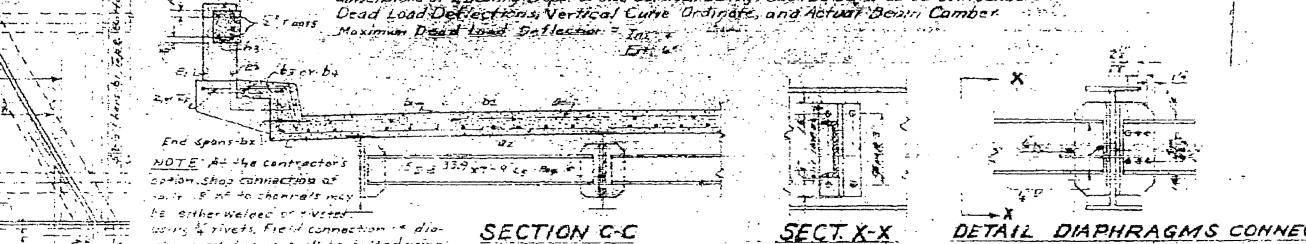
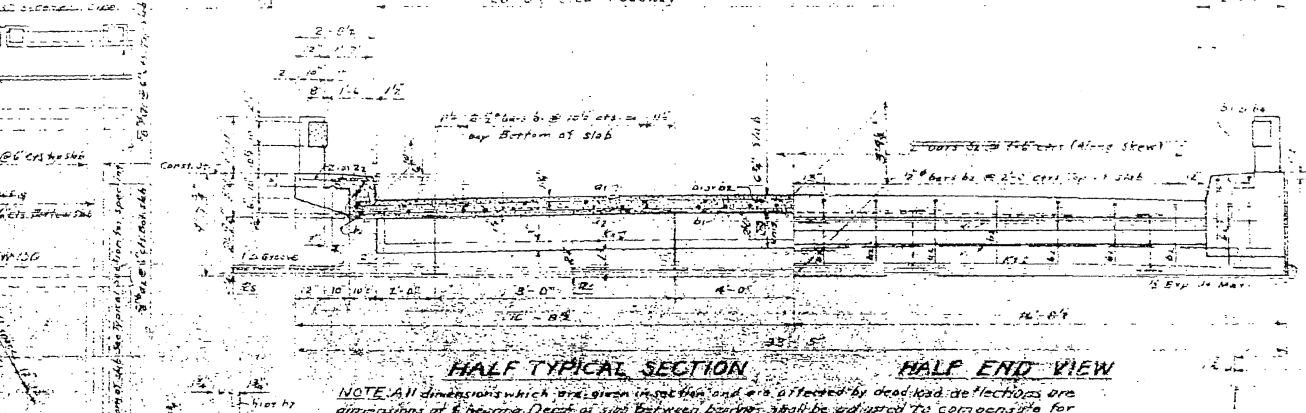
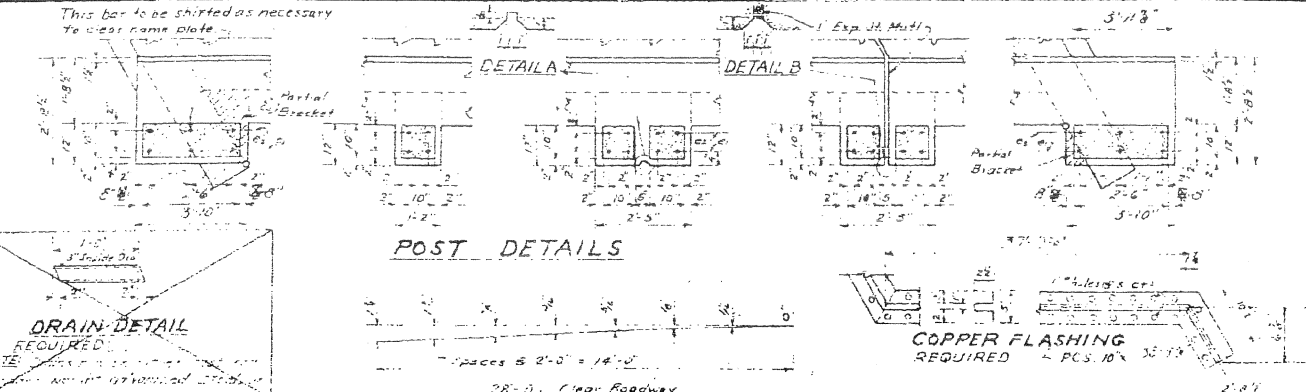
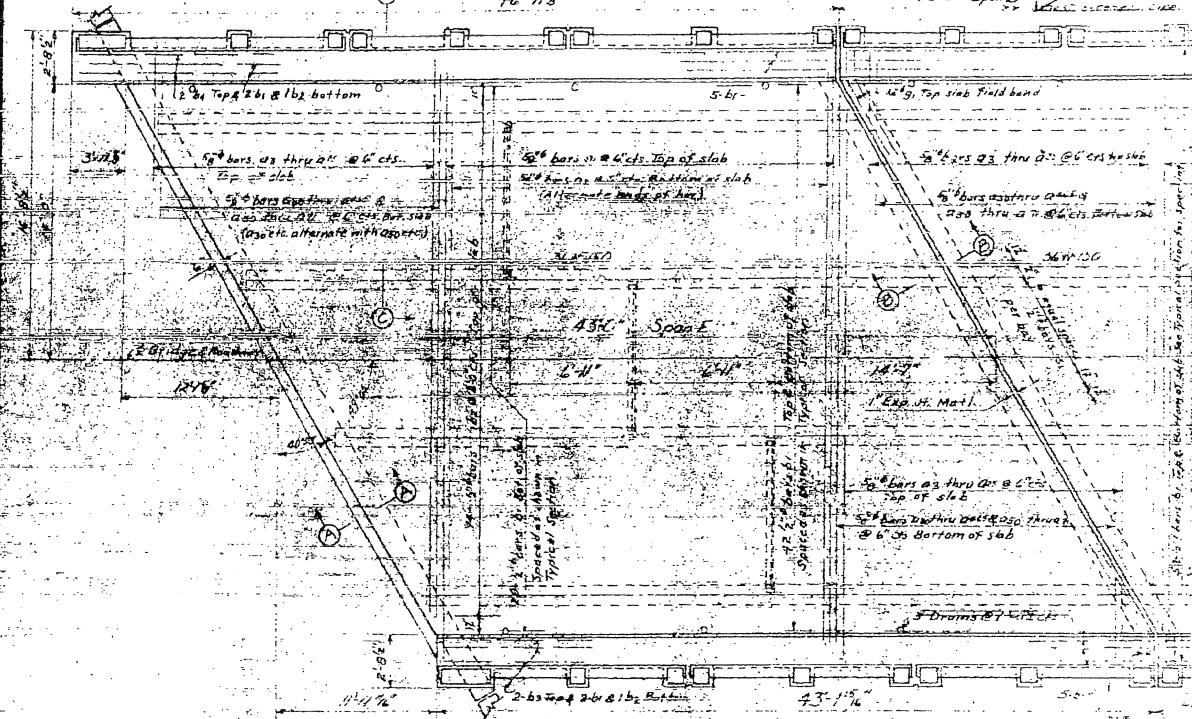
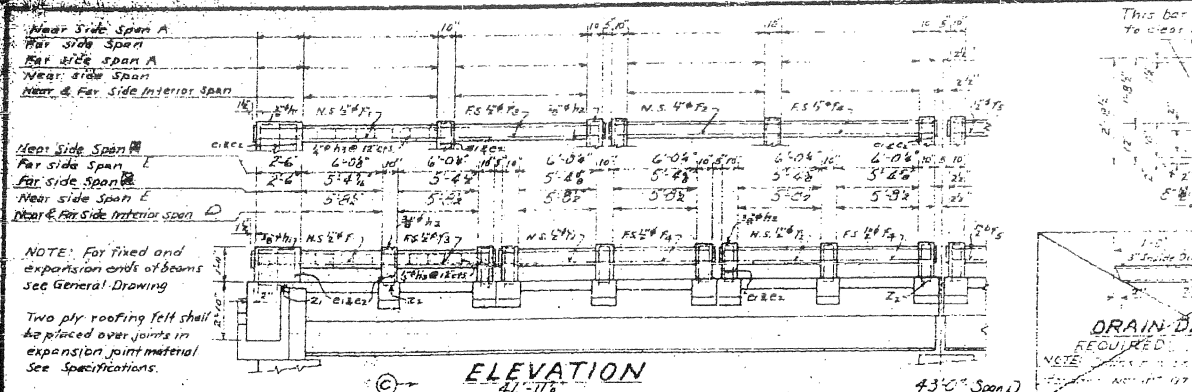
BAR TYPES

FILED WELD FOR SHEAR CONNECTION

PROJECT NO. 6734  
 POHAW-DANBURY COUNTY  
 STATION 796-11.14

STATE OF MISSOURI  
 LEWIS & CLARK COUNTY  
 STANDARD  
 I-BEAM SUPERSTRUCTURE  
 WITH R.C. FLOOR & RAIL  
 28' ROADWAY 40°55' R.H. SKEW  
 OCT. 1950

STANDARD ST-G-A 28' ROADWAY 40°55' R.H. SKEW



Revised to change type of drains 10-6-50 A.R.S.-128

**SPECIAL**  
 CHECKED BY: *[Signature]* DATE: 10-12-50  
 DESIGNED BY: *[Signature]* DATE: 10-12-50

**STANDARD**  
 DRAWN BY: *[Signature]* DATE: 10-12-50  
 CHECKED BY: *[Signature]* DATE: 10-12-50

**BILL OF MATERIAL FOR 2 SPANS @ 43'0"**

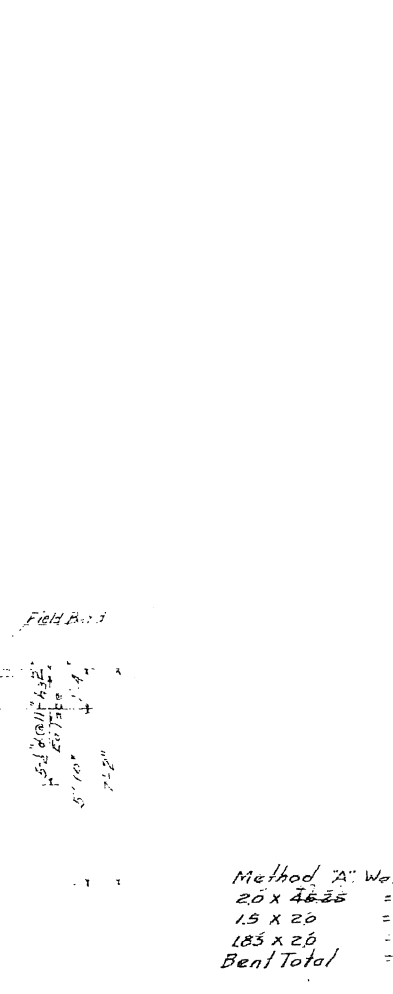
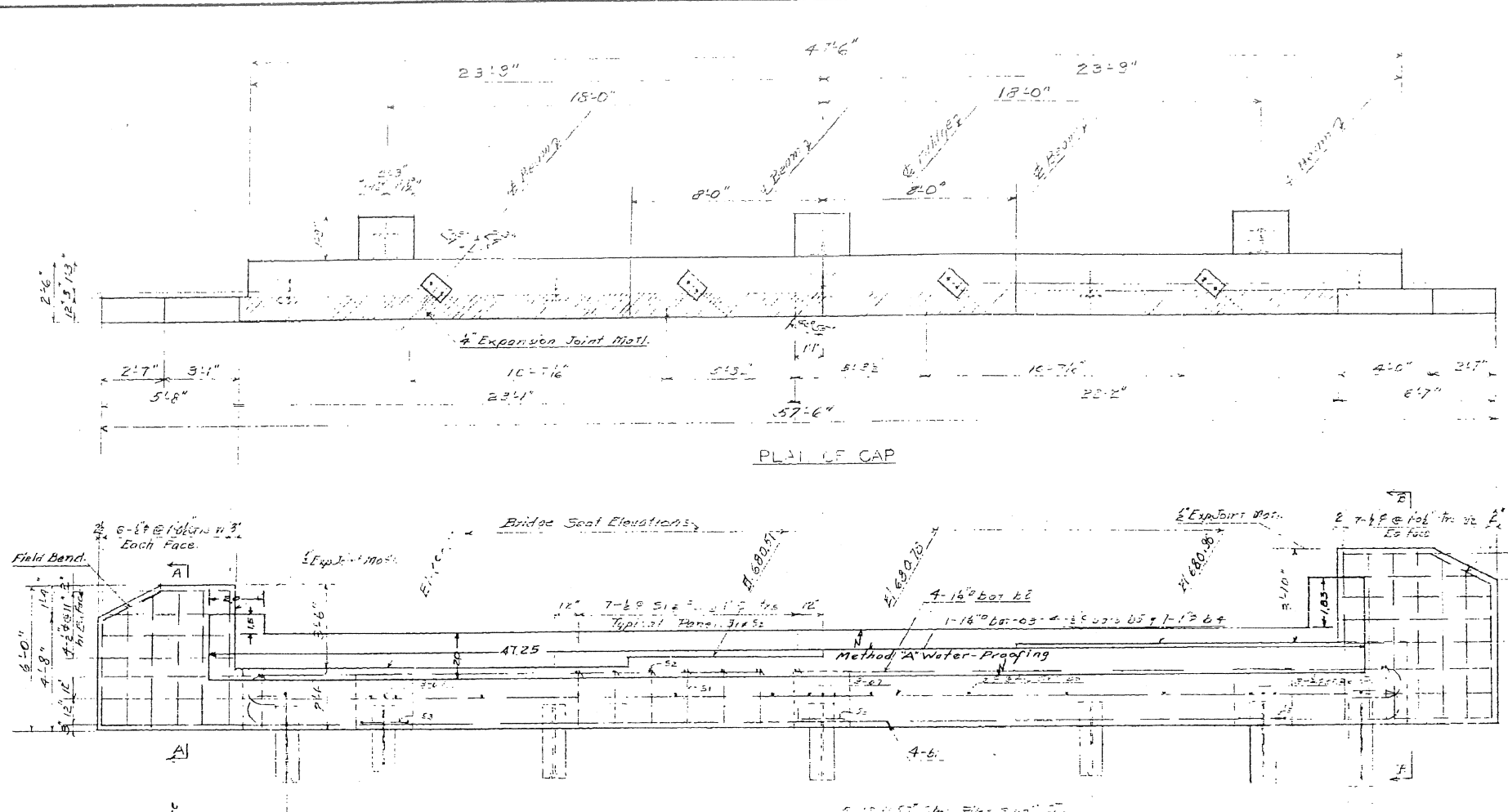
Bar No.	Size	Type	Length	Weight	Bar No.	Size	Type	Length	Weight	Bar No.	Size	Type	Length	Weight
01	#11	S	31'-0"	12.5	02	#11	S	31'-0"	12.5	03	#11	S	31'-0"	12.5
04	#11	S	31'-0"	12.5	05	#11	S	31'-0"	12.5	06	#11	S	31'-0"	12.5
07	#11	S	31'-0"	12.5	08	#11	S	31'-0"	12.5	09	#11	S	31'-0"	12.5
10	#11	S	31'-0"	12.5	11	#11	S	31'-0"	12.5	12	#11	S	31'-0"	12.5
13	#11	S	31'-0"	12.5	14	#11	S	31'-0"	12.5	15	#11	S	31'-0"	12.5
16	#11	S	31'-0"	12.5	17	#11	S	31'-0"	12.5	18	#11	S	31'-0"	12.5
19	#11	S	31'-0"	12.5	20	#11	S	31'-0"	12.5	21	#11	S	31'-0"	12.5
22	#11	S	31'-0"	12.5	23	#11	S	31'-0"	12.5	24	#11	S	31'-0"	12.5
25	#11	S	31'-0"	12.5	26	#11	S	31'-0"	12.5	27	#11	S	31'-0"	12.5
28	#11	S	31'-0"	12.5	29	#11	S	31'-0"	12.5	30	#11	S	31'-0"	12.5
31	#11	S	31'-0"	12.5	32	#11	S	31'-0"	12.5	33	#11	S	31'-0"	12.5
34	#11	S	31'-0"	12.5	35	#11	S	31'-0"	12.5	36	#11	S	31'-0"	12.5
37	#11	S	31'-0"	12.5	38	#11	S	31'-0"	12.5	39	#11	S	31'-0"	12.5
40	#11	S	31'-0"	12.5	41	#11	S	31'-0"	12.5	42	#11	S	31'-0"	12.5
43	#11	S	31'-0"	12.5	44	#11	S	31'-0"	12.5	45	#11	S	31'-0"	12.5
46	#11	S	31'-0"	12.5	47	#11	S	31'-0"	12.5	48	#11	S	31'-0"	12.5
49	#11	S	31'-0"	12.5	50	#11	S	31'-0"	12.5	51	#11	S	31'-0"	12.5
52	#11	S	31'-0"	12.5	53	#11	S	31'-0"	12.5	54	#11	S	31'-0"	12.5
55	#11	S	31'-0"	12.5	56	#11	S	31'-0"	12.5	57	#11	S	31'-0"	12.5
58	#11	S	31'-0"	12.5	59	#11	S	31'-0"	12.5	60	#11	S	31'-0"	12.5

PROJECT NO. 6734  
 ROWAN-DAVIDSON COUNTY  
 STATION: 796+11.14

SPANS 43'-0"

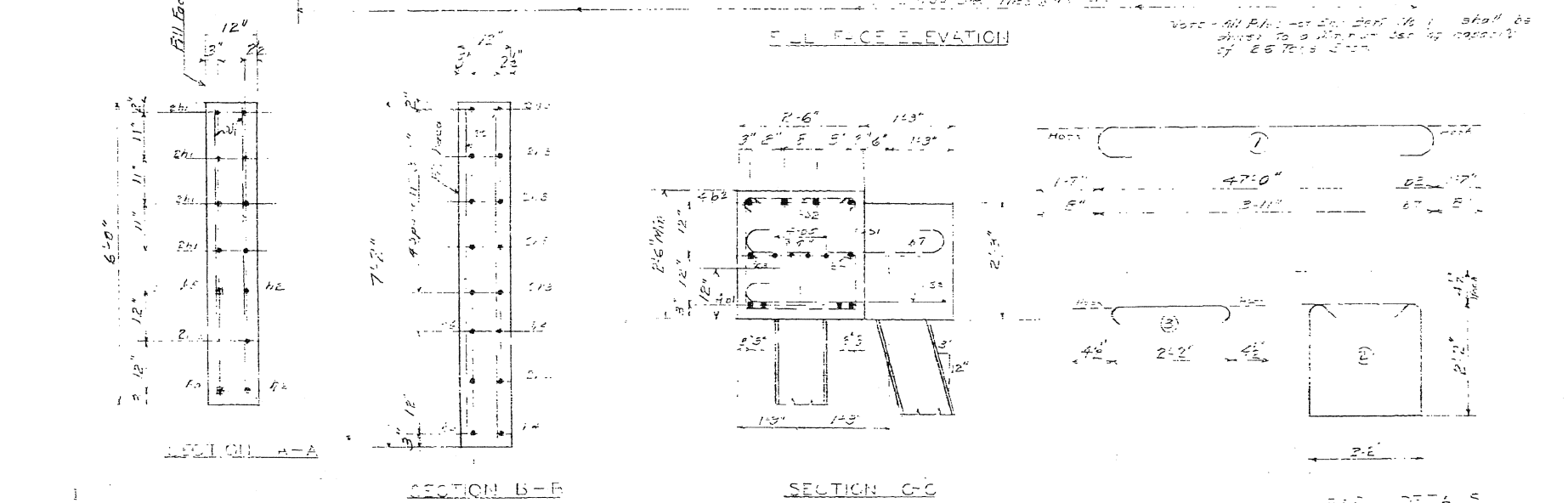
STATE OF NORTH CAROLINA  
 STATE HIGHWAY COMMISSION  
 PUBLIC WORKS COMMISSION

**STANDARD I BEAM SUPERSTRUCTURE WITH R.C. FLOOR & RAIL**  
 28' ROADWAY W. OF S. H. SKEW  
 OCT. 1950



Bar	Qty	Length	Weight
01	2	17'-0"	33.0
02	2	17'-0"	33.0
03	2	17'-0"	33.0
04	2	17'-0"	33.0
05	2	17'-0"	33.0
06	2	17'-0"	33.0
07	2	17'-0"	33.0
08	2	17'-0"	33.0
09	2	17'-0"	33.0
10	2	17'-0"	33.0
11	2	17'-0"	33.0
12	2	17'-0"	33.0
13	2	17'-0"	33.0
14	2	17'-0"	33.0
15	2	17'-0"	33.0
16	2	17'-0"	33.0
17	2	17'-0"	33.0
18	2	17'-0"	33.0
19	2	17'-0"	33.0
20	2	17'-0"	33.0
21	2	17'-0"	33.0
22	2	17'-0"	33.0
23	2	17'-0"	33.0
24	2	17'-0"	33.0
25	2	17'-0"	33.0
26	2	17'-0"	33.0
27	2	17'-0"	33.0
28	2	17'-0"	33.0
29	2	17'-0"	33.0
30	2	17'-0"	33.0
31	2	17'-0"	33.0
32	2	17'-0"	33.0
33	2	17'-0"	33.0
34	2	17'-0"	33.0
35	2	17'-0"	33.0
36	2	17'-0"	33.0
37	2	17'-0"	33.0
38	2	17'-0"	33.0
39	2	17'-0"	33.0
40	2	17'-0"	33.0
41	2	17'-0"	33.0
42	2	17'-0"	33.0
43	2	17'-0"	33.0
44	2	17'-0"	33.0
45	2	17'-0"	33.0
46	2	17'-0"	33.0
47	2	17'-0"	33.0
48	2	17'-0"	33.0
49	2	17'-0"	33.0
50	2	17'-0"	33.0
51	2	17'-0"	33.0
52	2	17'-0"	33.0
53	2	17'-0"	33.0
54	2	17'-0"	33.0
55	2	17'-0"	33.0
56	2	17'-0"	33.0
57	2	17'-0"	33.0
58	2	17'-0"	33.0
59	2	17'-0"	33.0
60	2	17'-0"	33.0
61	2	17'-0"	33.0
62	2	17'-0"	33.0
63	2	17'-0"	33.0
64	2	17'-0"	33.0
65	2	17'-0"	33.0
66	2	17'-0"	33.0
67	2	17'-0"	33.0
68	2	17'-0"	33.0
69	2	17'-0"	33.0
70	2	17'-0"	33.0
71	2	17'-0"	33.0
72	2	17'-0"	33.0
73	2	17'-0"	33.0
74	2	17'-0"	33.0
75	2	17'-0"	33.0
76	2	17'-0"	33.0
77	2	17'-0"	33.0
78	2	17'-0"	33.0
79	2	17'-0"	33.0
80	2	17'-0"	33.0
81	2	17'-0"	33.0
82	2	17'-0"	33.0
83	2	17'-0"	33.0
84	2	17'-0"	33.0
85	2	17'-0"	33.0
86	2	17'-0"	33.0
87	2	17'-0"	33.0
88	2	17'-0"	33.0
89	2	17'-0"	33.0
90	2	17'-0"	33.0
91	2	17'-0"	33.0
92	2	17'-0"	33.0
93	2	17'-0"	33.0
94	2	17'-0"	33.0
95	2	17'-0"	33.0
96	2	17'-0"	33.0
97	2	17'-0"	33.0
98	2	17'-0"	33.0
99	2	17'-0"	33.0
100	2	17'-0"	33.0

Method A Water-proofing  
 20 x 46 35 = 94.5 sq ft  
 15 x 20 = 30 " "  
 185 x 26 = 37 " "  
 Bent Total = 101.2 " = 11.25 sq yds.



DESIGNED BY: \_\_\_\_\_ DATE: \_\_\_\_\_  
 DRAWN BY: \_\_\_\_\_ DATE: \_\_\_\_\_  
 CHECKED BY: \_\_\_\_\_ DATE: \_\_\_\_\_

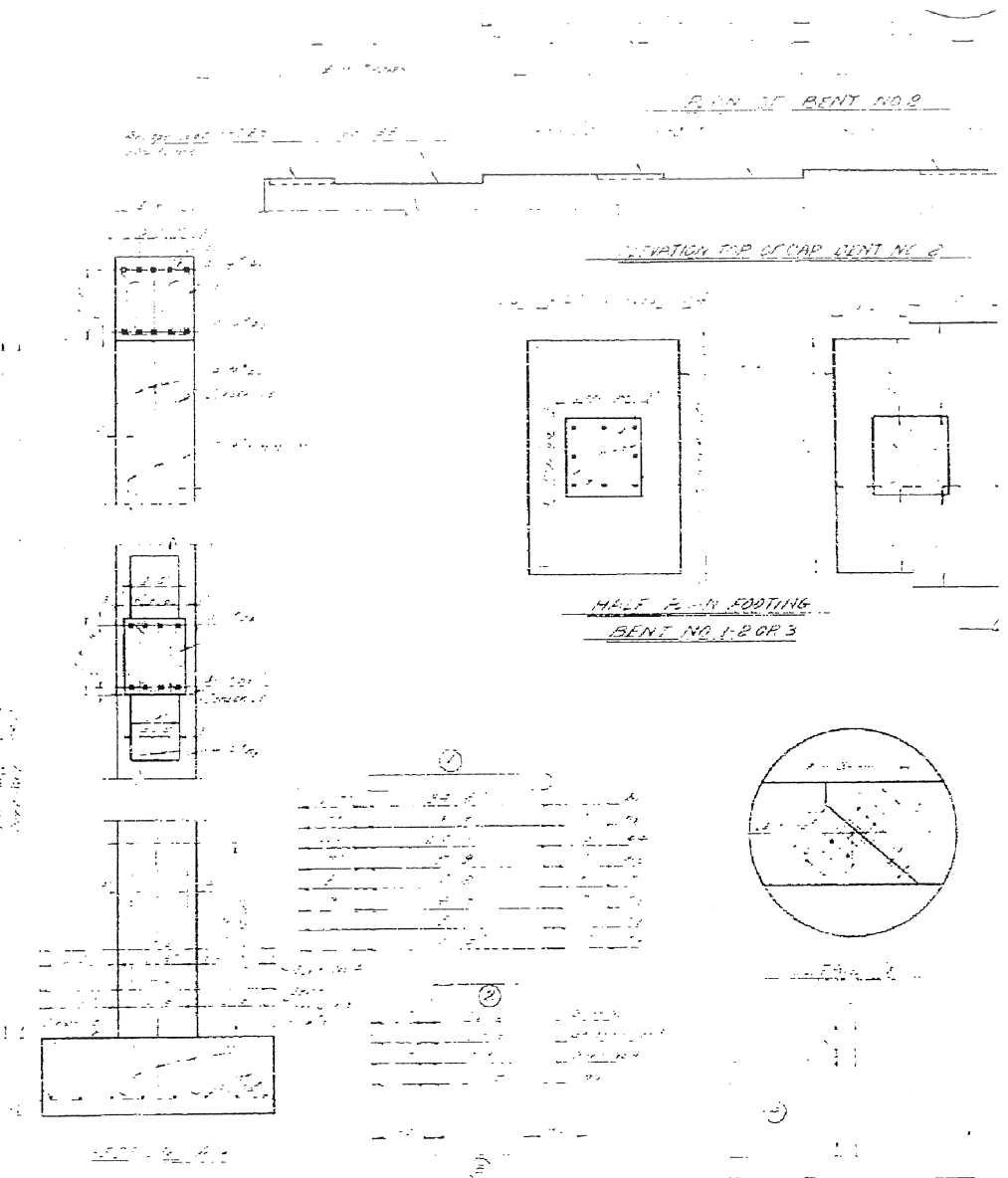
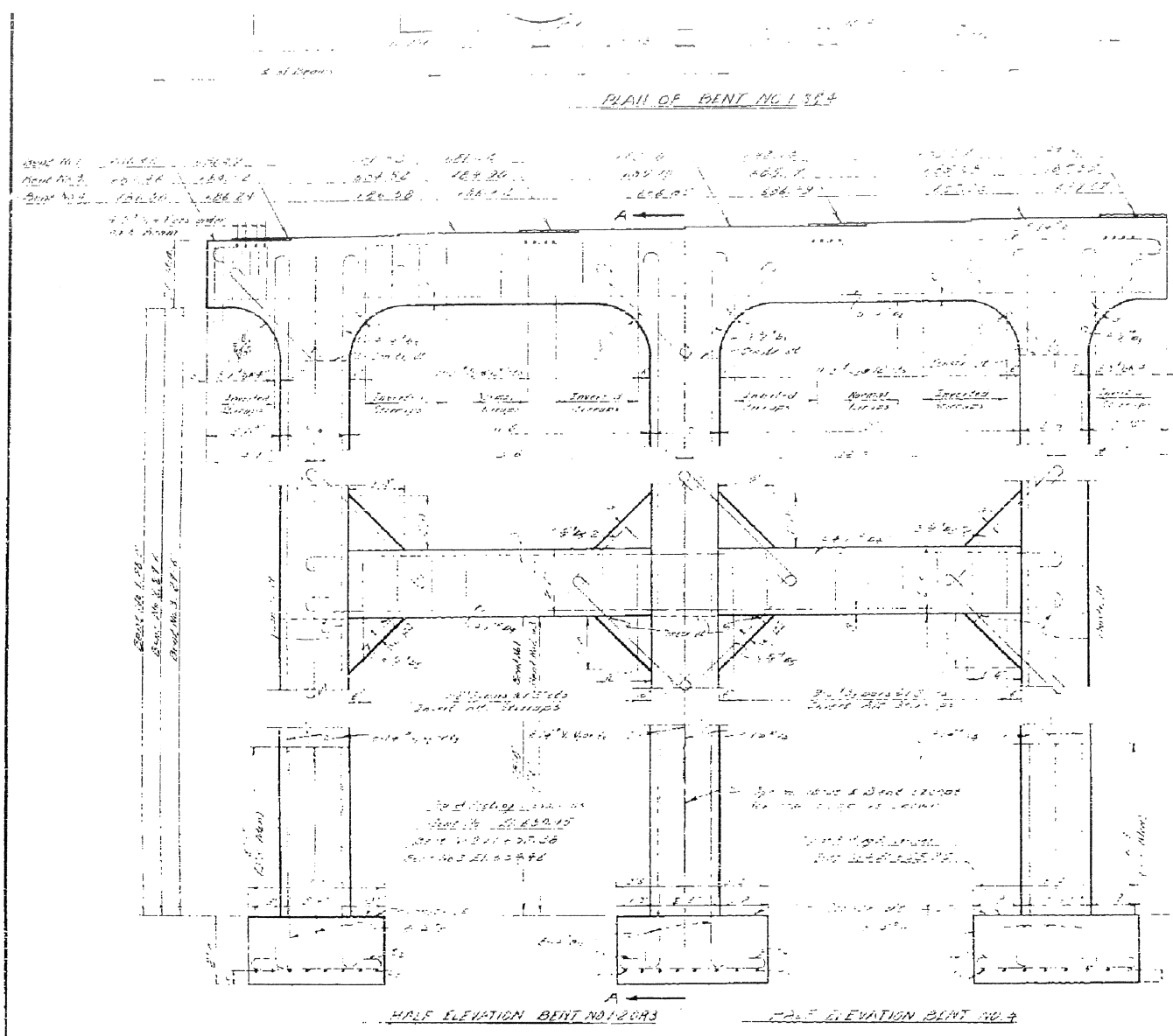
PART B  
 PROJECT NO. 6734  
 FROEN-DAVIDSON COUNTY  
 STATION: 796 + 11.14 LB  
 END BENT No. 1

STATE OF NORTH CAROLINA  
 STATE HIGHWAY AND  
 PUBLIC WORKS COMMISSION

SUBSTRUCTURE

101-254

APPROVED: \_\_\_\_\_ DATE: \_\_\_\_\_  
 MADE BY: \_\_\_\_\_ DATE: \_\_\_\_\_

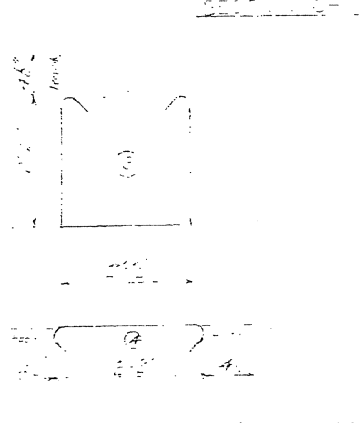
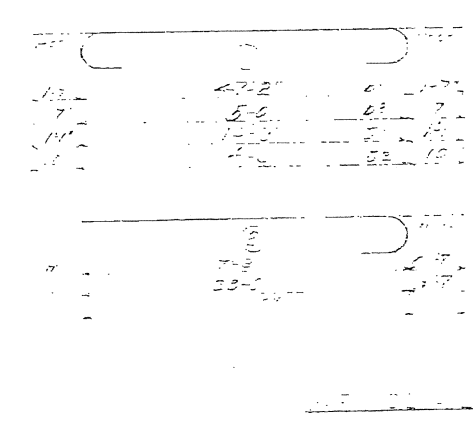
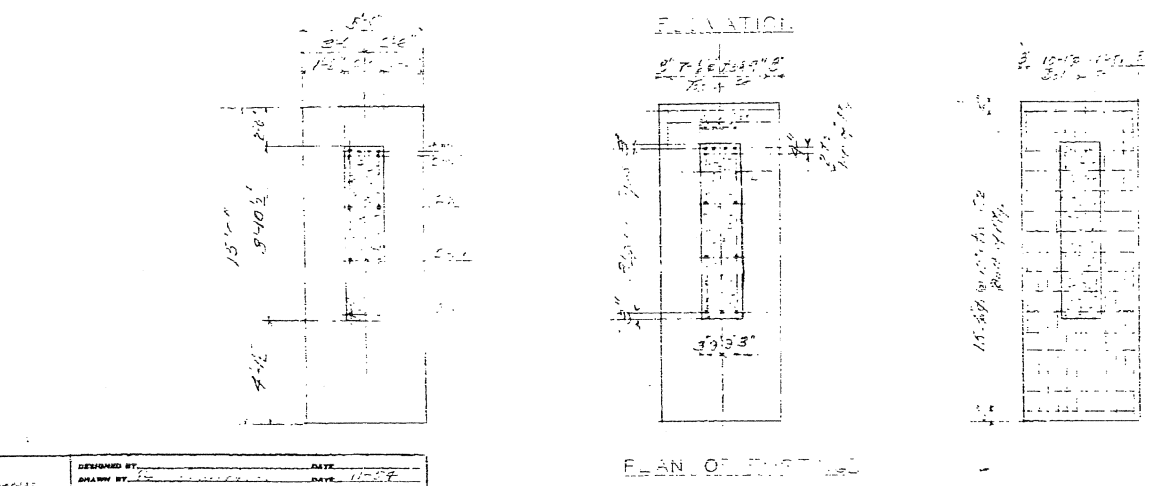
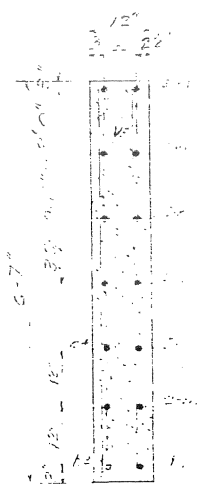
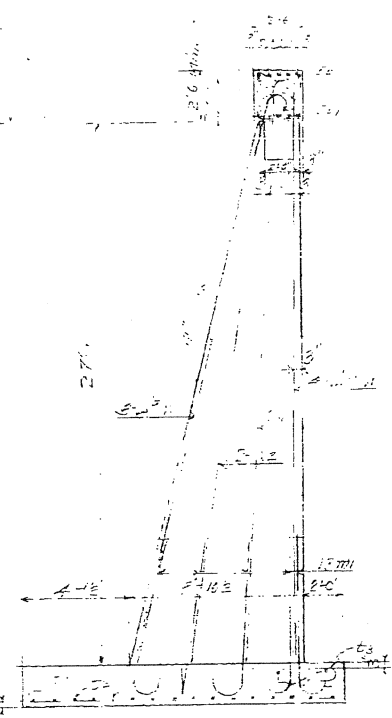
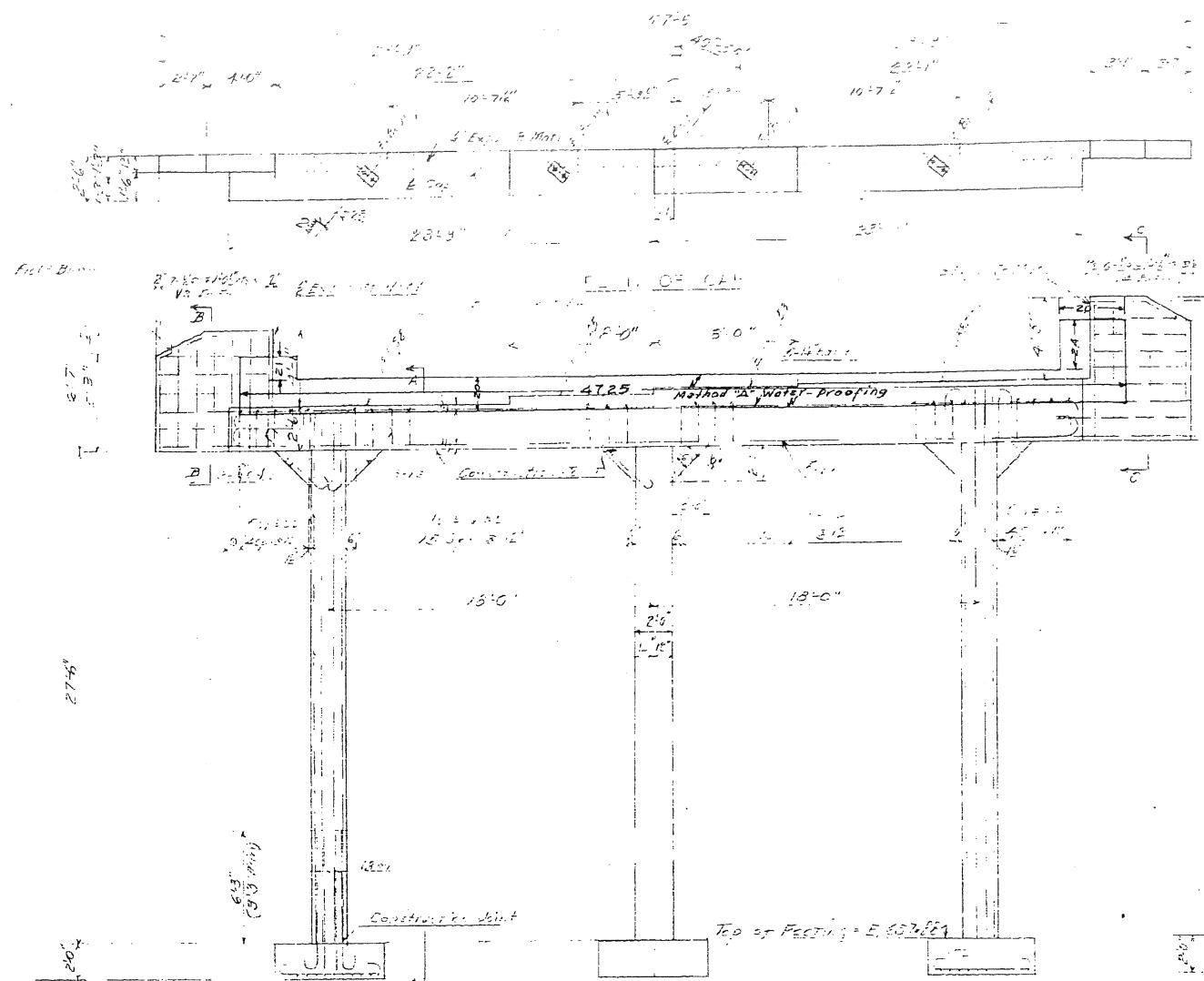


TOTAL BILL OF MATERIAL FOR ONE BENT      LABORS REQUIRED

ITEM	QTY	UNIT	PRICE	TOTAL	LABOR	UNIT	PRICE	TOTAL
Concrete	100	cu yd	1.50	150.00	10	hr	1.00	10.00
Reinforcing Steel	200	lb	0.05	10.00	20	hr	1.00	20.00
Formwork	500	sq ft	0.02	10.00	50	hr	1.00	50.00
Bricks	10000	units	0.01	100.00	100	hr	1.00	100.00
Mortar	500	cu yd	0.50	250.00	50	hr	1.00	50.00
Paint	100	gal	0.10	10.00	10	hr	1.00	10.00
Other	50	units	0.05	2.50	5	hr	1.00	5.00
<b>TOTAL</b>				<b>362.50</b>	<b>345</b>	<b>hr</b>		<b>345.00</b>

DESIGNED BY: Richard J. Sullivan      DATE: 1928  
 CHECKED BY: H. W. ...      DATE: 1928

NO.	REV.	DATE
3	HC	6/24
BY: [Signature]		



NO.	DESCRIPTION	AMOUNT	UNIT	TOTAL
1	20 x 47.5	9.5	Sq. Ft.	9.5
2	21 x 20	42	Sq. Ft.	42
3	24 x 20	18	Sq. Ft.	18
Bent Total				115

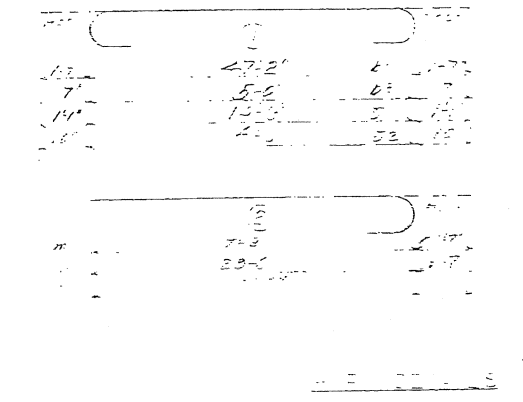
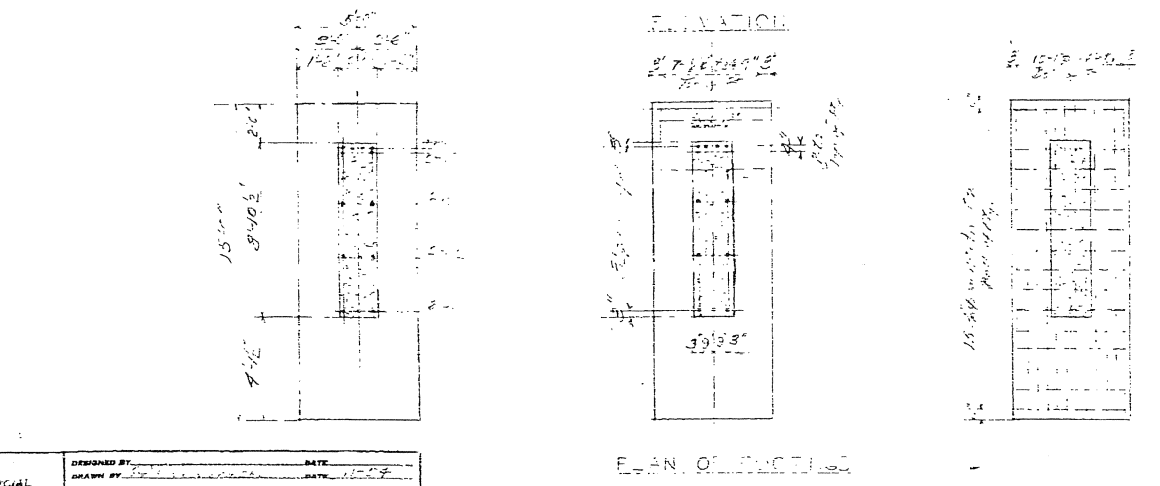
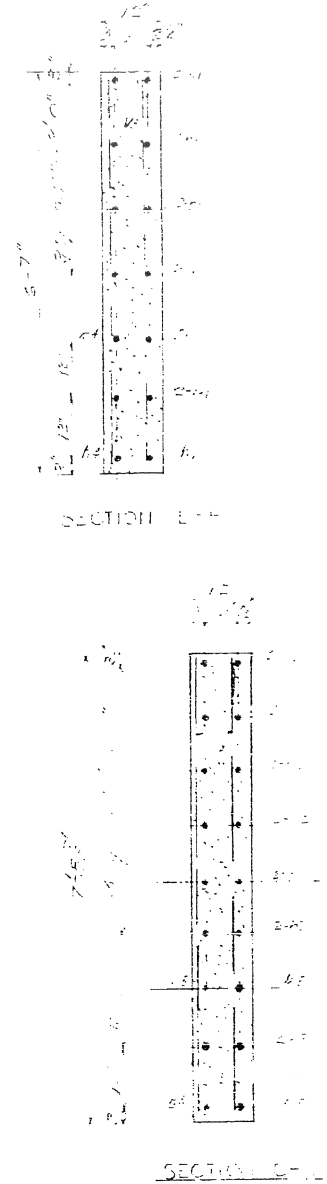
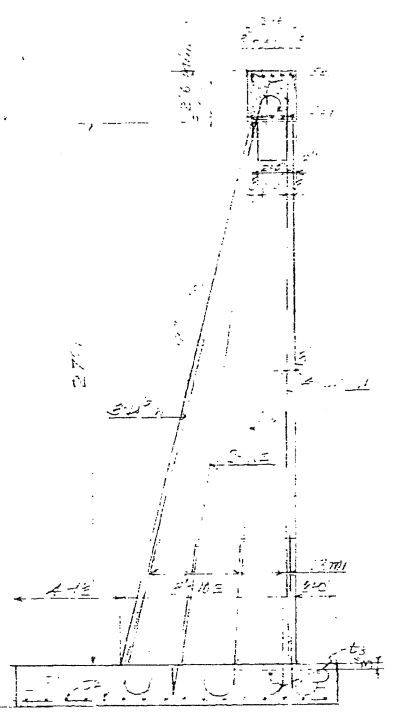
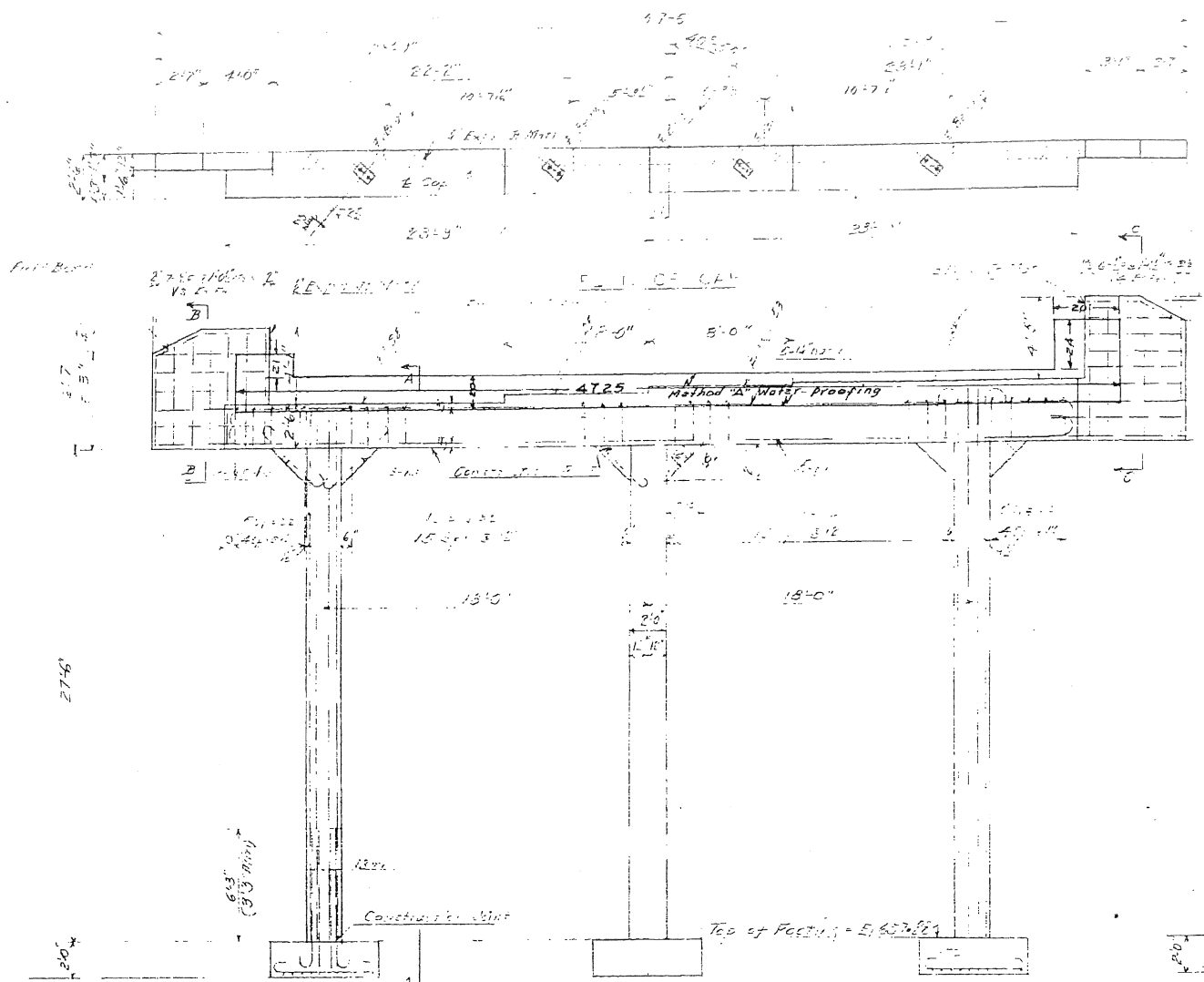
Method A Water-Proofing  
 20 x 47.5 = 9.5 Sq. Ft.  
 21 x 20 = 42  
 24 x 20 = 18  
 Bent Total = 1035 = 115 Sq. Yds.

PART 1  
 PROJECT NO. 6724  
 COUNTY  
 STATION: 12+00  
 END BENT NO. 2

STATE OF NORTH CAROLINA  
 STATE HIGHWAY AND  
 PUBLIC WORKS COMMISSION  
 RALEIGH

DATE: 11-24  
 DRAWN BY: [Signature]  
 CHECKED BY: [Signature]

SPECIAL  
 DESIGNED BY: [Signature] DATE: 11-24  
 DRAWN BY: [Signature] DATE: 11-24  
 CHECKED BY: [Signature] DATE: 11-24



Method A Water-Proofing  
 20 x 47.25' = 945 Sq. Ft.  
 21 x 20' = 42 " "  
 24 x 20' = 48 " "  
 Bent Total = 1035 " " = 115 Sq. Yds.

NO.	DESCRIPTION	AMOUNT	UNIT	PRICE	TOTAL
1	Concrete	1035	Sq. Yds.	1.15	1189.25
2	Reinforcement	1035	Sq. Ft.	0.10	103.50
3	Formwork	1035	Sq. Ft.	0.05	51.75
4	Water-Proofing	1035	Sq. Ft.	0.08	82.80
5	Other	1035	Sq. Ft.	0.02	20.70
Subtotal					1457.00
Total					1457.00

PART B  
 PROJECT NO. 6734  
 COUNTY  
 STATION: 1786  
 END PART B

STATE OF NORTH CAROLINA	
STATE HIGHWAY AND PUBLIC WORKS COMMISSION	
DESIGNED BY	DATE
DRAWN BY	DATE
CHECKED BY	DATE
APPROVED BY	DATE

DESIGNED BY: \_\_\_\_\_ DATE: \_\_\_\_\_  
 DRAWN BY: \_\_\_\_\_ DATE: 11-27-57  
 CHECKED BY: \_\_\_\_\_ DATE: 12-2-57  
 SPECIAL