

T.I.P.: W-5335

**STATE OF NORTH CAROLINA  
DEPARTMENT OF TRANSPORTATION**

**PAVEMENT MARKING PLAN  
CUMBERLAND COUNTY**

**LOCATION: NC 24/210 (GROVE STREET) FROM RAMSEY STREET /GREEN STREET TO CAPE FEAR RIVER  
BRIDGE AND I-95 BUSINESS /US 301 FROM NC 24/210 (GROVE STREET) TO PERSON STREET**

<small>TIP NO.</small> W-5335	<small>SHEET NO.</small> PMP-1
<small>APPROVED:</small>	
<small>DATE:</small> 1-10-13	
<small>SEAL</small>	

**W-5335 FINAL PAVEMENT  
MARKING SCHEDULE  
(THERMOPLASTIC)**

<u>SYMBOL</u>	<u>DISCRIPTION</u>
<u>THERMOPLASTIC (24", 120 MILS)</u>	
T2	WHITE STOPBAR
T3	WHITE CROSSWALK LINE
<u>THERMOPLASTIC (4", 120 MILS)</u>	
T8	2 FT.-6 FT./SP WHITE MINISKIP
TC	10 FT. WHITE SKIP
TD	3 FT.-9 FT./SP WHITE MINISKIP
TE	WHITE SOLID LANE LINE
TI	YELLOW DOUBLE CENTER
<u>THERMOPLASTIC (8", 120 MILS)</u>	
TR	WHITE SOLID LANE LINE
T13	3 FT.-9 FT./SP WHITE MINISKIP
<u>THERMOPLASTIC (4", 90 MILS)</u>	
TB	YELLOW EDGELINE
<u>THERMOPLASTIC PAVEMENT MARKING SYMBOLS (90 MILS)</u>	
UA	LEFT TURN ARROW
UB	RIGHT TURN ARROW
UC	STRAIGHT ARROW
UE	COMBO STRAIGHT/RIGHT ARROW
<u>THERMOPLASTIC PAVEMENT MARKING CHARACTER (120 MILS)</u>	
UI	ALPHANUMERIC CHAR.
<b>(MARKERS)</b>	
<u>PERMANENT RAISED PAVEMENT MARKERS</u>	
MA	YELLOW & YELLOW
MB	CRYSTAL & RED

**W-5335 FINAL PAVEMENT  
MARKING SCHEDULE  
(PAINT)**

<u>SYMBOL</u>	<u>DISCRIPTION</u>
<u>PAINT (24")</u>	
P2	WHITE STOPBAR
<u>PAINT (4")</u>	
P8	2 FT.-6 FT./SP WHITE MINISKIP
PB	YELLOW EDGELINE
PC	10 FT. WHITE SKIP
PD	3 FT.-9 FT./SP WHITE MINISKIP
PE	WHITE SOLID LANE LINE
<u>PAINT (8")</u>	
PN	WHITE GORELINE
PR	WHITE SOLID LANE LINE
P13	3 FT.-9 FT./SP WHITE MINISKIP
<u>PAINT PAVEMENT MARKING SYMBOLS</u>	
QA	LEFT TURN ARROW
QB	RIGHT TURN ARROW
QC	STRAIGHT ARROW
QE	COMBO STRAIGHT/RIGHT ARROW
<u>PAINT PAVEMENT MARKING CHARACTER</u>	
QI	ALPHANUMERIC CHAR.

**GENERAL NOTES**

- THE FOLLOWING GENERAL NOTES APPLY AT ALL TIMES FOR THE DURATION OF THE CONSTRUCTION PROJECT, EXCEPT WHEN OTHERWISE NOTED IN THE PLAN, OR DIRECTED BY THE ENGINEER.
- A) INSTALL PAVEMENT MARKINGS AND PAVEMENT MARKERS ON THE FINAL SURFACE AS FOLLOWS:

ROAD NAME	MARKING	MARKER
-L- NC 24/210 (GROVE ST.)	THERMOPLASTIC	PERMANENT RAISED MARKER
-Y- I-95 BUS/US-301	THERMOPLASTIC	PERMANENT RAISED MARKER
-L- STA. 48+60.00-STA. 58+76.78	PAINT	PERMANENT RAISED MARKER
-Y- STA. 20+68.45-STA. 23+55.00	PAINT	PERMANENT RAISED MARKER
  - B) PLACE TWO APPLICATIONS OF PAINT PAVEMENT MARKINGS ON THE FINAL WEARING SURFACE. PLACE THE SECOND APPLICATION OF PAINT UPON SUFFICIENT DRYING TIME OF THE FIRST.
  - C) TIE PROPOSED PAVEMENT MARKING LINES TO EXISTING PAVEMENT MARKING LINES.
  - D) REMOVE/REPLACE ANY CONFLICTING/DAMAGED PAVEMENT MARKINGS AND MARKERS.
  - E) PASSING ZONES WILL BE DETERMINED IN THE FIELD AND MUST BE APPROVED BY THE ENGINEER.
  - F) UNLESS OTHERWISE SPECIFIED, HEATED-IN-PLACE THERMOPLASTIC MAY BE USED IN LIEU OF EXTRUDED THERMOPLASTIC FOR STOP BARS, SYMBOLS, CHARACTERS AND DIAGONALS. IF HEATED-IN-PLACE IS USED, IT SHALL BE PAID FOR USING THE EXTRUDED THERMOPLASTIC PAY ITEM.
  - G) MARKERS SHALL BE INSTALLED ACCORDING TO THE NCDOT ROADWAY STANDARD DRAWING 1250.01.

**ROADWAY STANDARD DRAWING**

THE FOLLOWING ROADWAY STANDARDS AS APPEAR IN "ROADWAY STANDARD DRAWINGS" - PROJECT SERVICES UNIT - N.C. DEPARTMENT OF TRANSPORTATION - RALEIGH, N.C., DATED JANUARY 2012 ARE APPLICABLE TO THIS PROJECT AND BY REFERENCE HEREBY ARE CONSIDERED A PART OF THESE PLANS:

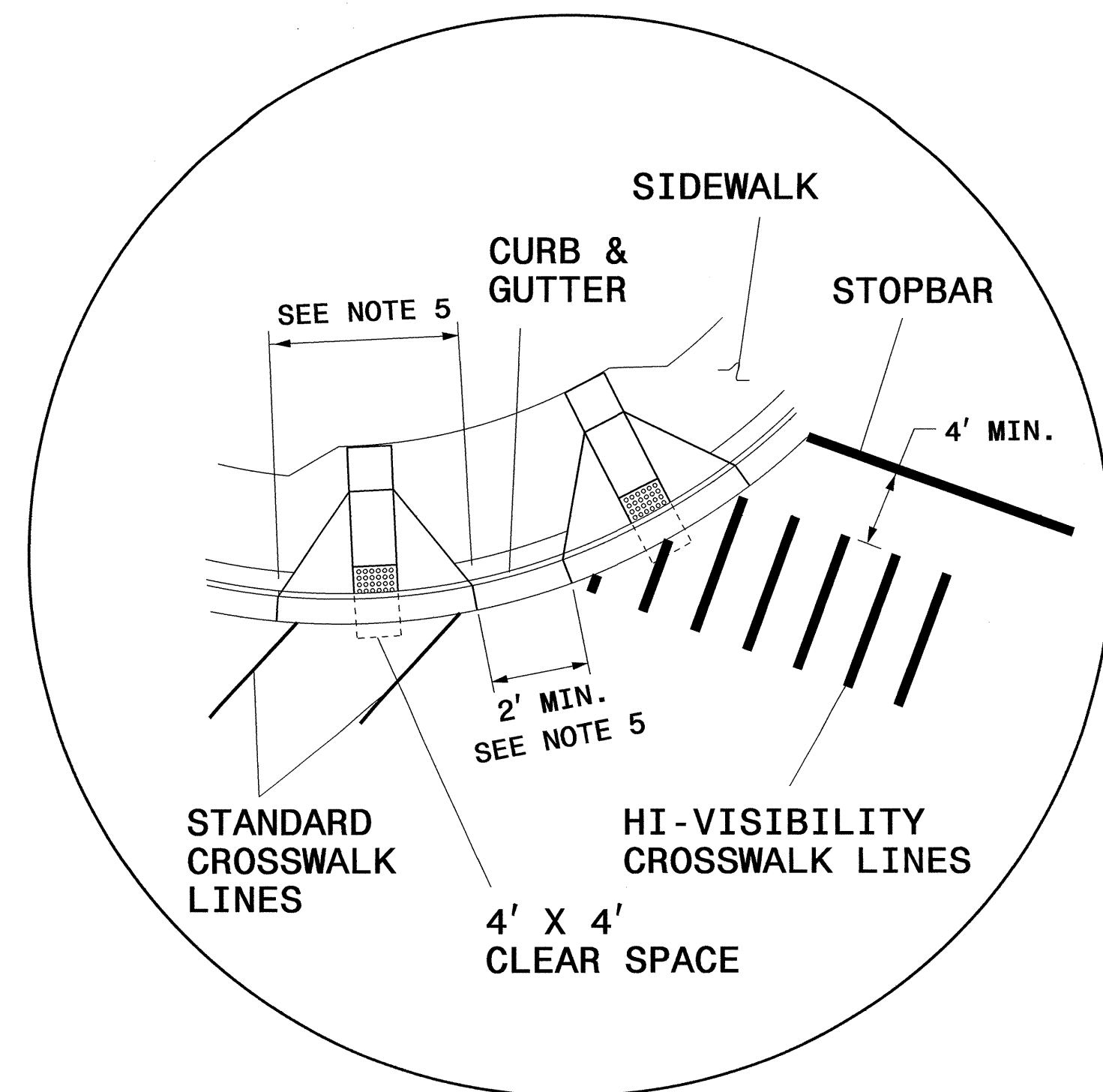
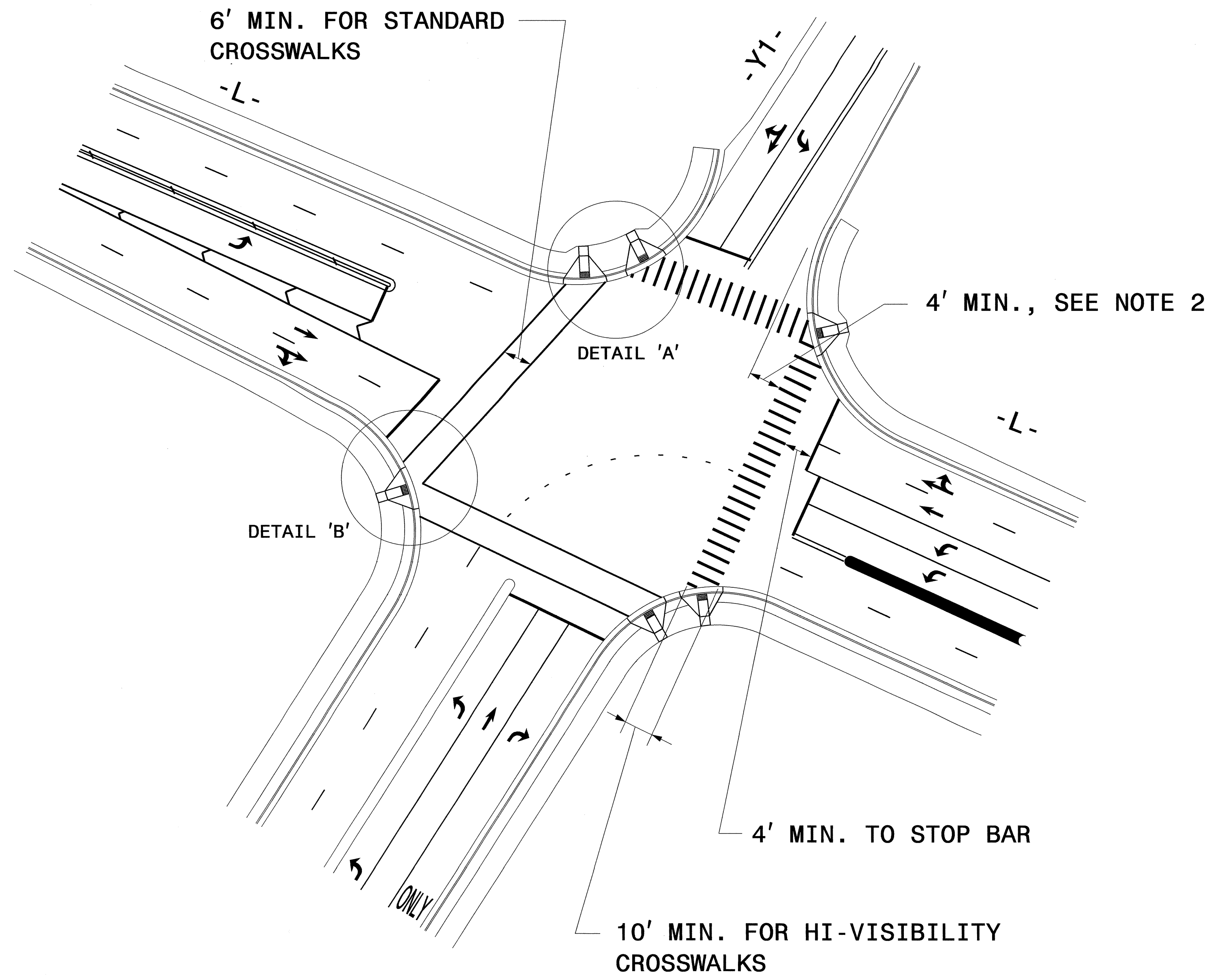
<u>STD. NO.</u>	<u>TITLE</u>
1205.01	PAVEMENT MARKINGS - LINE TYPES AND OFFSETS
1205.02	PAVEMENT MARKINGS - TWO-LANE AND MULTILANE ROADWAYS
1205.04	PAVEMENT MARKINGS - INTERSECTIONS
1205.05	PAVEMENT MARKINGS - TURN LANES
1205.06	PAVEMENT MARKINGS - LANE DROPS
1205.07	PAVEMENT MARKINGS - PEDESTRIAN CROSSWALKS
1205.08	PAVEMENT MARKINGS - SYMBOLS AND WORD MESSAGES
1205.09	PAVEMENT MARKINGS - PAINTED ISLANDS
1250.01	RAISED PAVEMENT MARKERS - INSTALLATION SPACING
1251.01	RAISED PAVEMENT MARKERS - PERMANENT AND TEMPORARY

**INDEX**

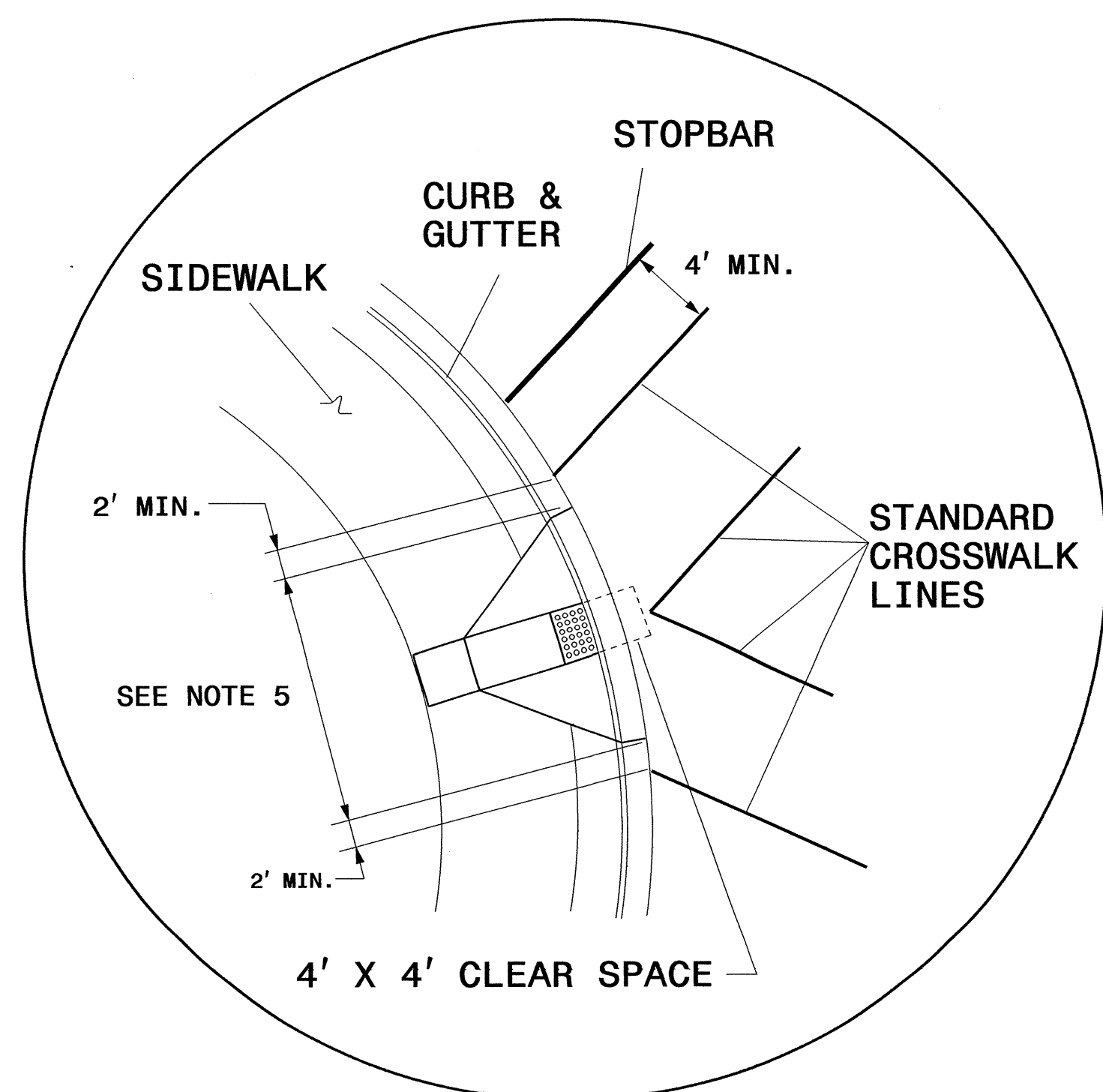
<u>SHEET NO.</u>	<u>DESCRIPTION</u>
PMP-1	PAVEMENT MARKING PLAN TITLE SCHEDULE SHEET
PMP-2	CROSSWALK AND STOP BAR PAVEMENT MARKING DETAIL
PMP-2A & 2B	REVISED PAVEMENT MARKING ROADWAY STANDARD DRAWING (1205.6 & 1205.8)
PMP-3-7	PAVEMENT MARKING DETAIL

<small>PLAN PREPARED BY: N.C.D.O.T. SIGNING AND DELINEATION UNIT</small>	
<small>AYMAN ALQUDWAH, PE, CPM</small>	<small>SIGNING &amp; DELINEATION REGIONAL ENGINEER</small>
<small>BASIR A. RASHID</small>	<small>SIGNING &amp; DELINEATION PROJECT DESIGN ENGINEER</small>

TIP NO.	SHEET NO.
W-5335	PMP-2
APPROVED: <i>[Signature]</i>	
DATE: 1-10-13	
SEAL	



DETAIL 'A'- DUAL CURB RAMPS



DETAIL 'B'- SINGLE DIAGONAL CURB RAMP

**GUIDANCE DETAIL FOR STANDARD AND HI-VISIBILITY CROSSWALKS AT SIGNALIZED OR STOP SIGN CONTROLLED INTERSECTIONS**

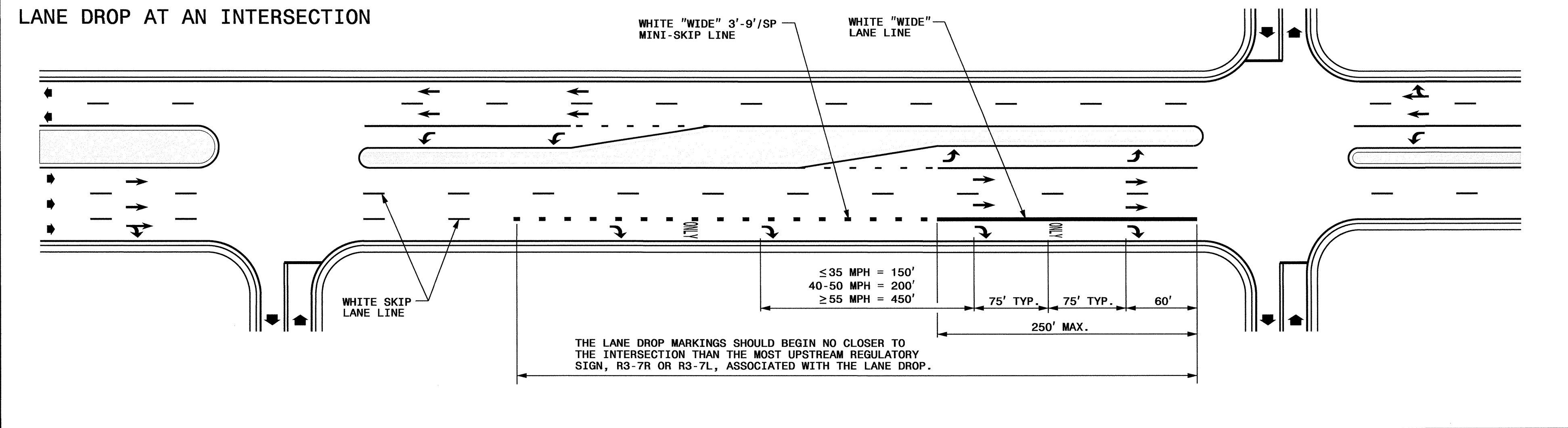
- NOTES:
1. USE DETAILS ABOVE AND THE FOLLOWING NOTES FOR GUIDANCE IN PLACING CROSSWALKS AND STOP BARS NOT STATIONED ON THE DETAIL SHEETS OR WHEN FIELD ADJUSTMENTS REQUIRED MOVING STATIONED MARKINGS AS DIRECTED BY THE ENGINEER. REFER TO NCDOT ROADWAY STANDARD DRAWINGS, MUTCD AND ADA STANDARDS FOR ADDITIONAL GUIDANCE.
  2. SET BACK DISTANCE FROM INSIDE CROSSWALK MARKING TO NEAREST EDGE OF TRAVEL IS 4' MIN.
  3. BEYOND THE BOTTOM GRADE BRAKE, A CLEAR SPACE OF 4' X 4' MINIMUM SHALL BE PROVIDED WITHIN THE WIDTH OF THE CROSSWALK.
  4. SINGLE DIAGONAL CURB RAMPS WITH FLARED SIDES SHALL HAVE A SEGMENT OF CURB 2 FEET LONG MINIMUM LOCATED ON EACH SIDE OF THE CURB RAMP AND WITHIN THE MARKED CROSSING, SEE DETAIL 'B'.
  5. CURB RAMPS SHALL BE CONSTRUCTED IN ACCORDANCE TO THE LATEST NCDOT ROADWAY STANDARD DRAWINGS.

**CROSSWALK AND STOP BAR PAVEMENT MARKING DETAIL**

I7-DEC-2012 14:18  
 S:\S&DJ\Regions\Signing\Basir\W-5335\PM\W-5335\_Sgn\_PMP\_Sheet-1-2B.dgn  
 AT TE247799  
 brashid

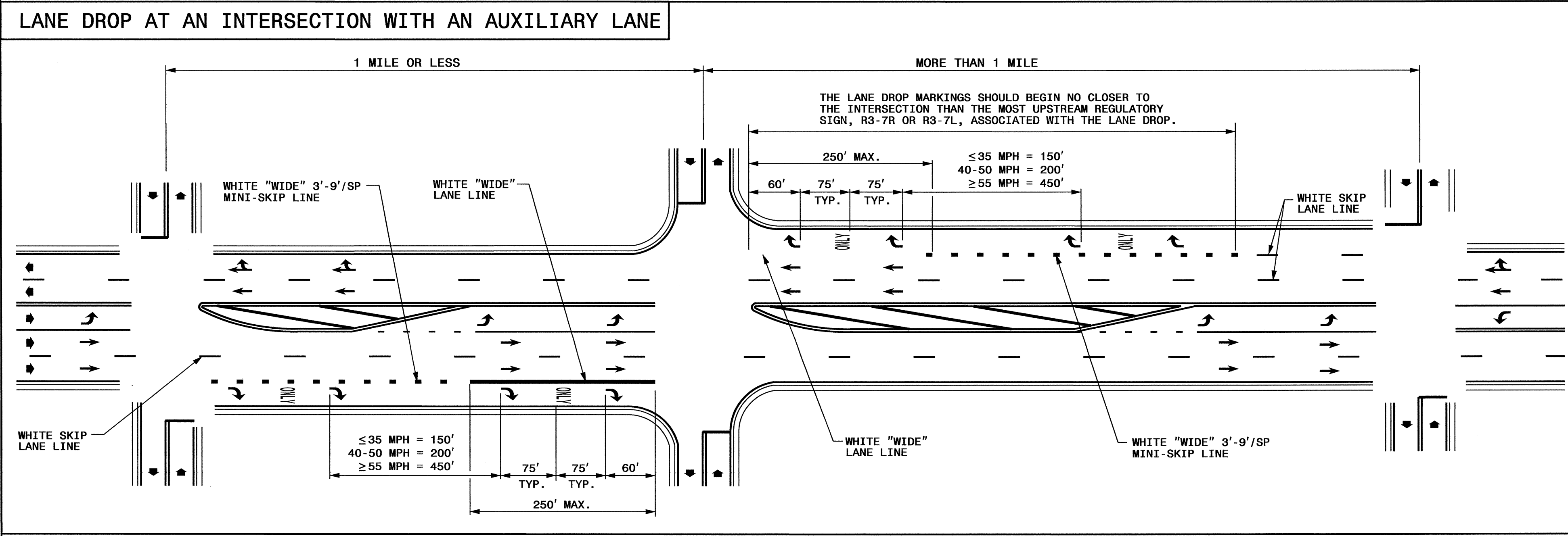
TIP NO. W-5335	SHEET NO. PMP-2A
APPROVED: <i>[Signature]</i>	
DATE: 1-10-13	
SEAL	

STATE OF NORTH CAROLINA  
DEPT. OF TRANSPORTATION  
DIVISION OF HIGHWAYS  
RALEIGH, N.C.



STATE OF NORTH CAROLINA  
DEPT. OF TRANSPORTATION  
DIVISION OF HIGHWAYS  
RALEIGH, N.C.

ENGLISH DETAIL DRAWING FOR  
PAVEMENT MARKINGS  
LANE DROPS



ENGLISH DETAIL DRAWING FOR  
PAVEMENT MARKINGS  
LANE DROPS

- GENERAL NOTES:**
- USE THE GUIDANCE SHOWN ON THE ABOVE DETAILS IN CONJUNCTION WITH INTERSECTION GUIDANCE SHOWN ON ROADWAY STANDARD DRAWING 1205.04.
  - LANE LINES INDICATED AS "WIDE" SHALL BE AT LEAST TWICE THE WIDTH OF THE NORMAL LINE.

LEGEND	
W = WIDTH OF TRAVEL LANE	ONLY PAVEMENT MARKING SYMBOLS & CHARACTERS
◆ DIRECTION OF TRAFFIC FLOW	

SHEET 1 OF 3  
**1205D06**

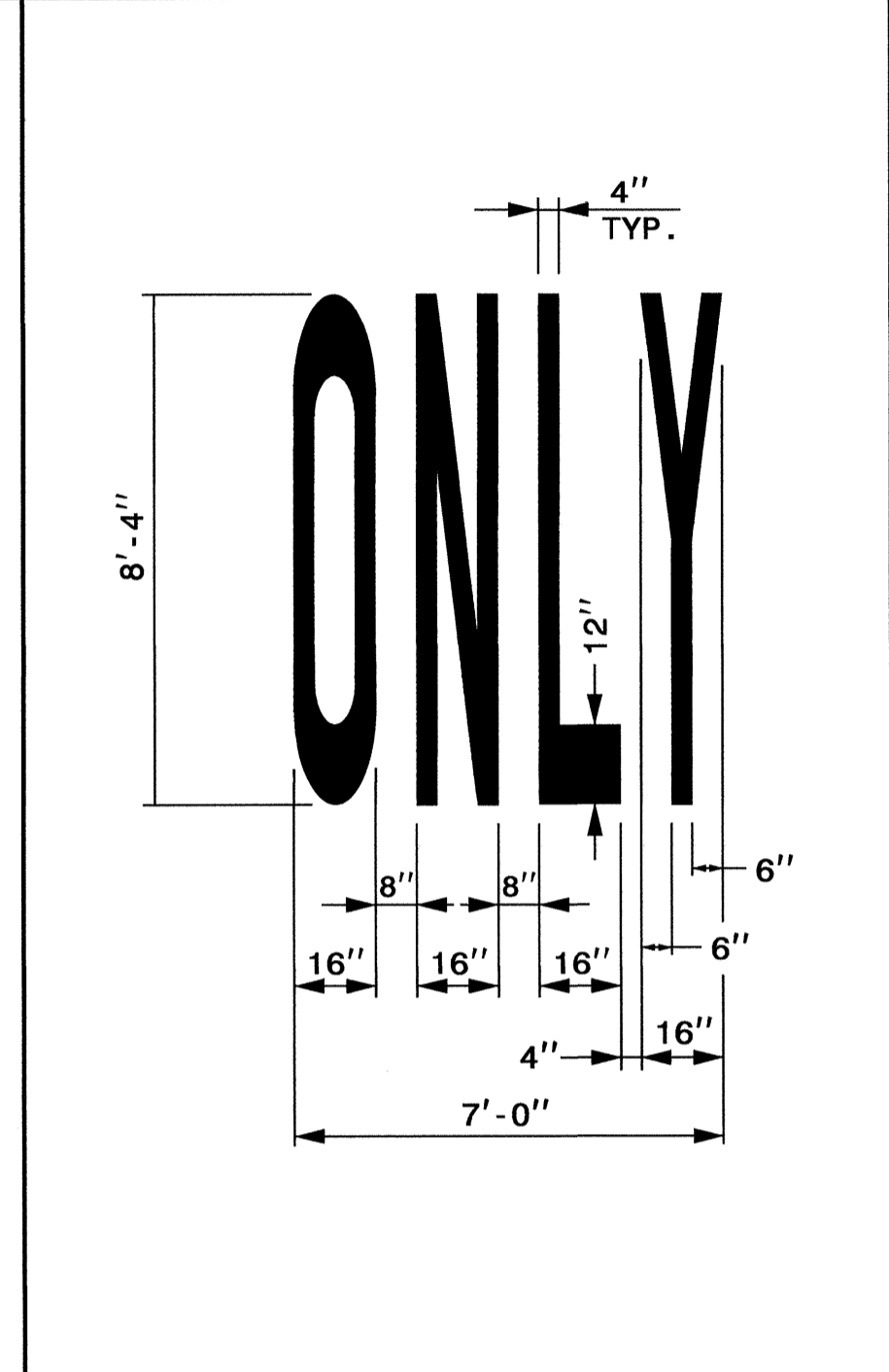
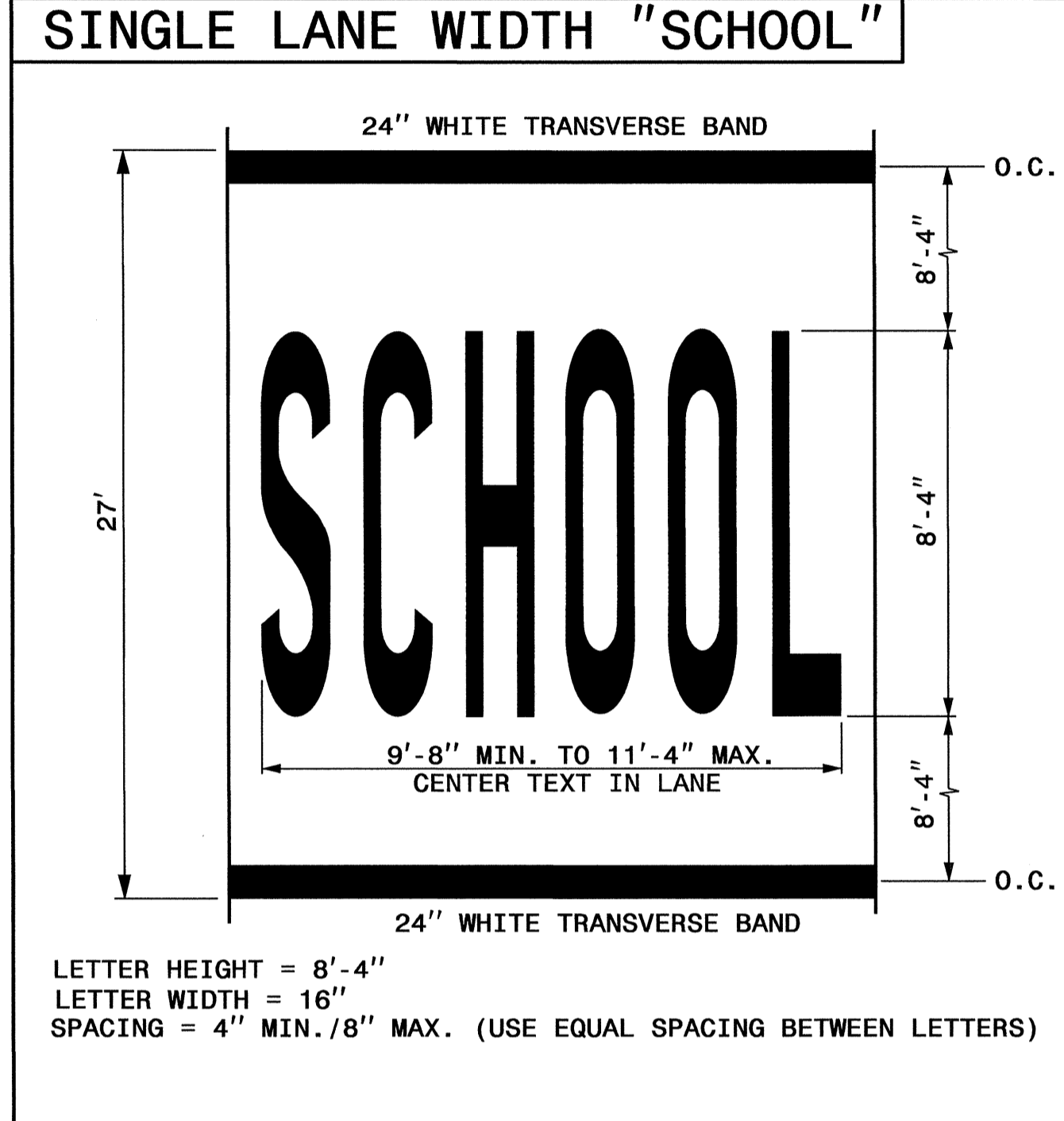
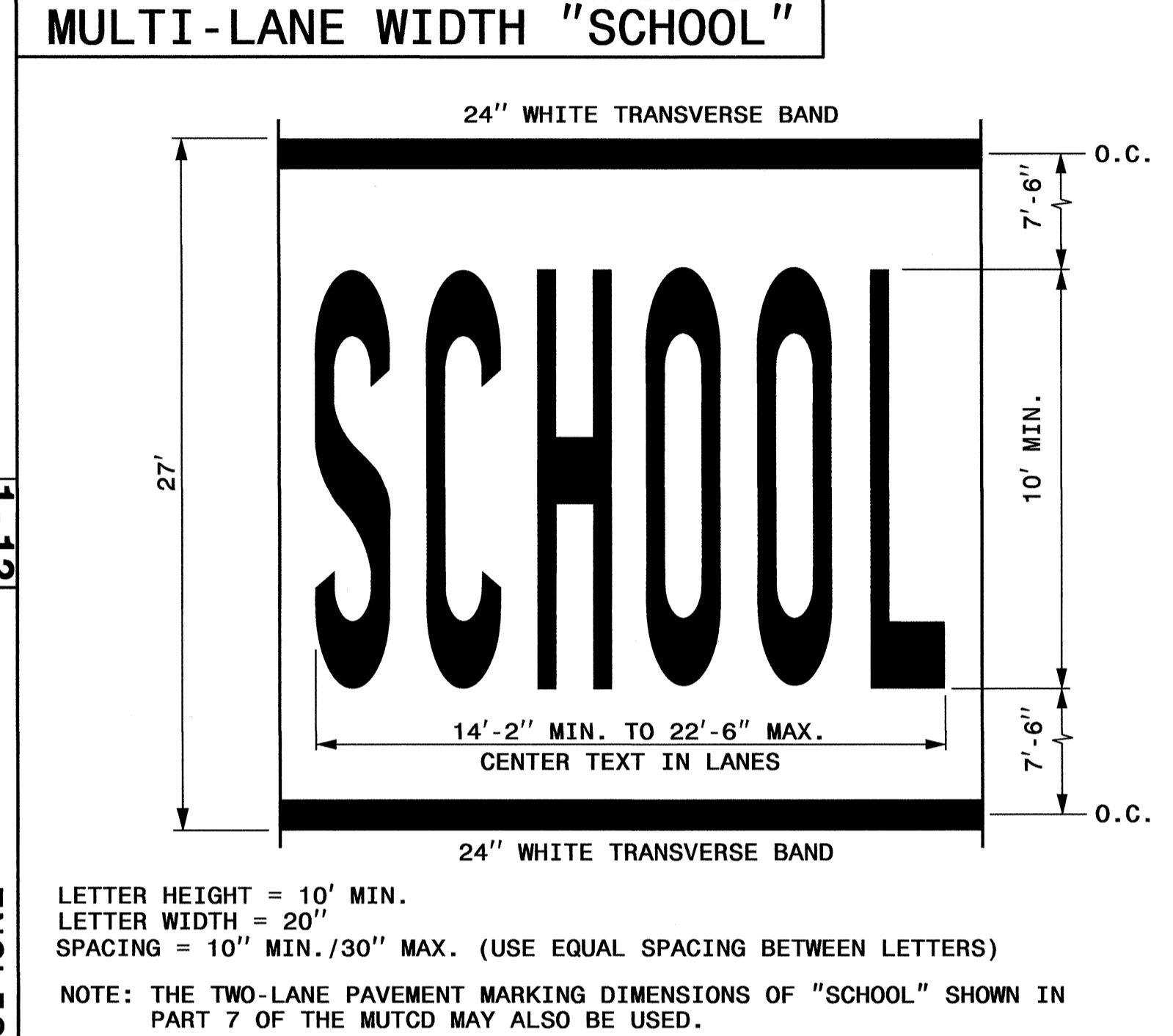
SHEET 1 OF 3  
**1205D06**

**REVISED PAVEMENT MARKING  
ROADWAY STANDARD DRAWING**

17-DEC-2012 14:20  
S:\S&OU\Regions\Signing\Basir\W-5335\PM\W-5335\_Sgn\_PMP\_Sheet-1-2B.dgn  
AT TE247799  
brashid

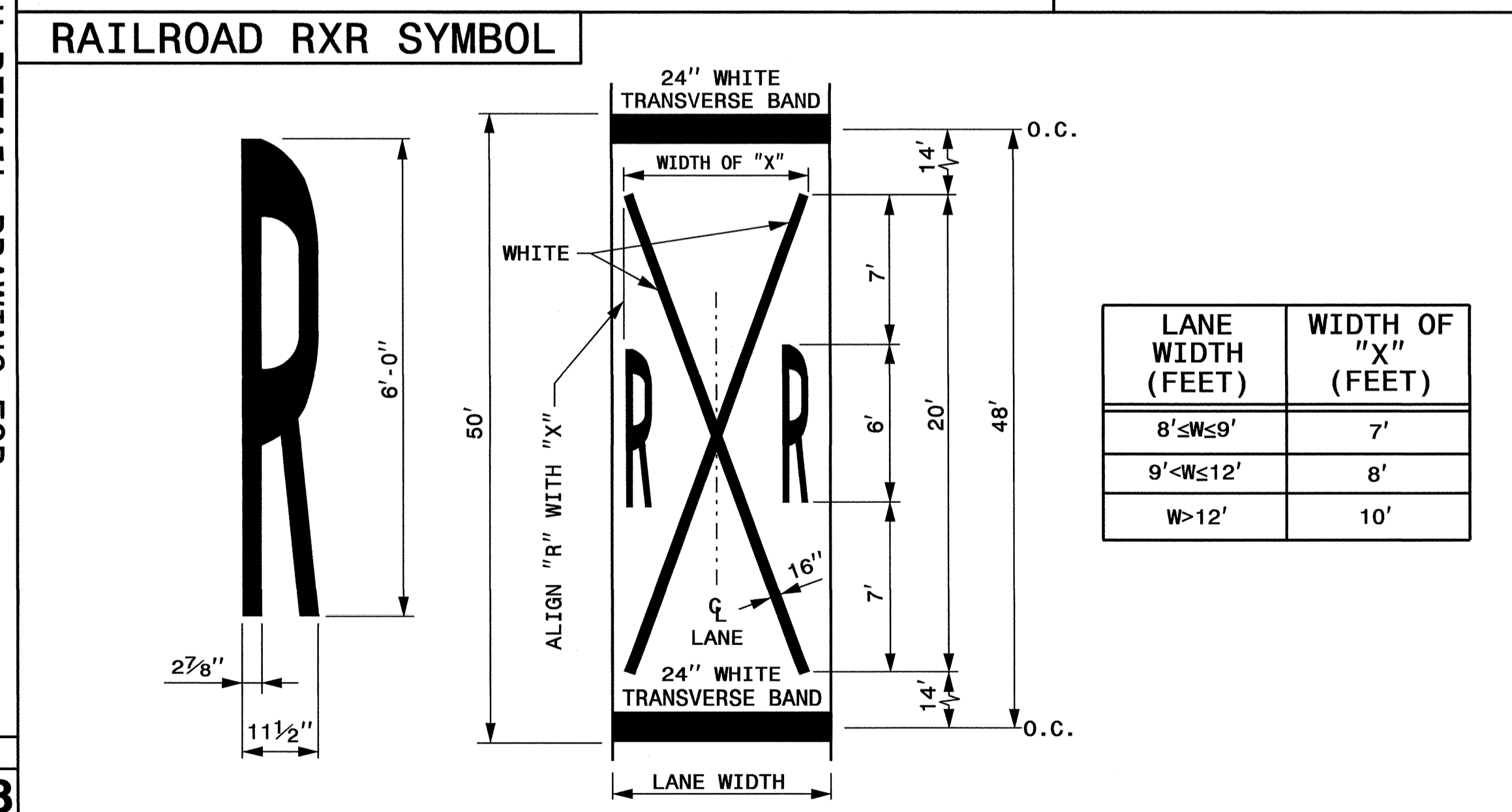
TIP NO. W-5335	SHEET NO. PMP-2B
APPROVED: <i>[Signature]</i>	
DATE: 1-10-13	
SEAL	

STATE OF NORTH CAROLINA  
DEPT. OF TRANSPORTATION  
DIVISION OF HIGHWAYS  
RALEIGH, N.C.



STATE OF NORTH CAROLINA  
DEPT. OF TRANSPORTATION  
DIVISION OF HIGHWAYS  
RALEIGH, N.C.

ENGLISH DETAIL DRAWING FOR  
**PAVEMENT MARKINGS**  
SYMBOLS AND WORD MESSAGES




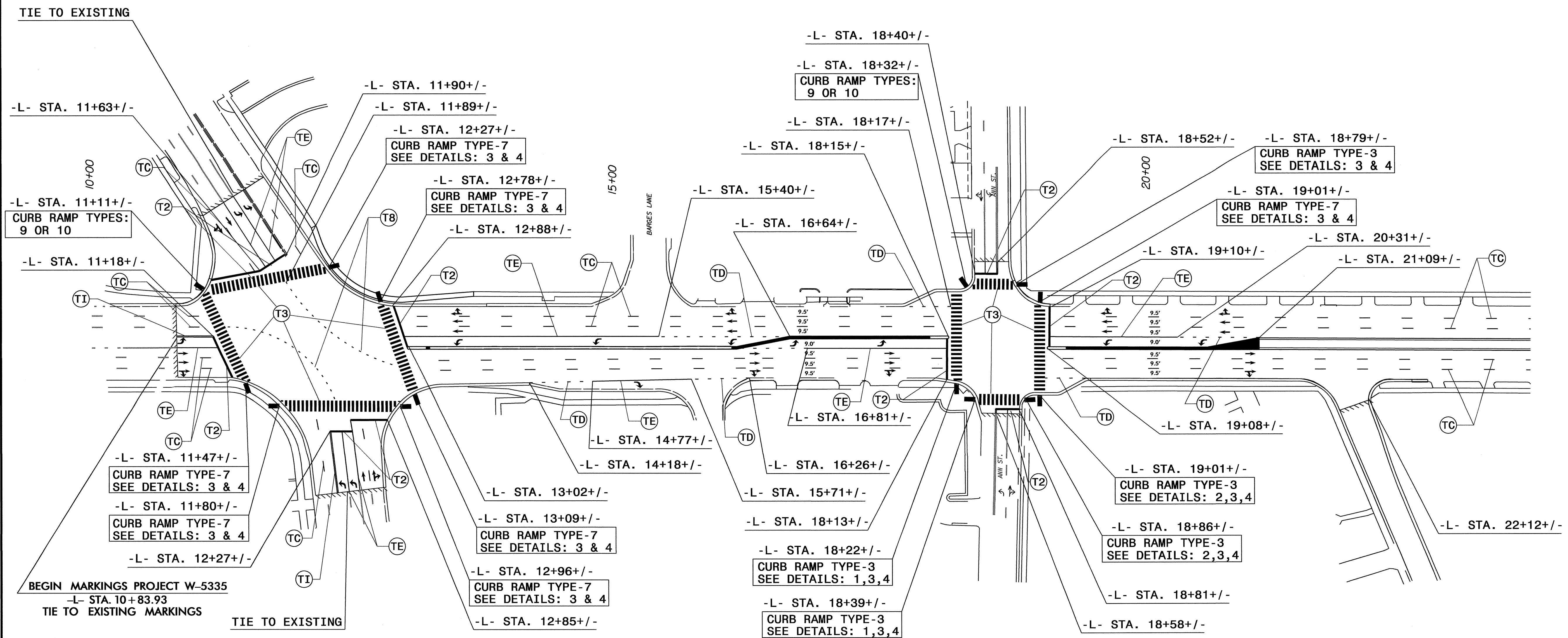
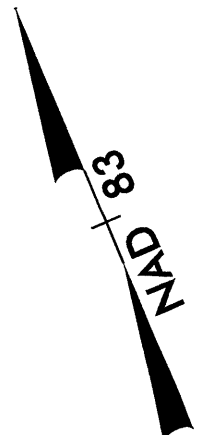
**GENERAL NOTES:**

- THE SCHOOL PAVEMENT MARKING CONSISTS OF SIX (6) CHARACTERS. THE TWO (2) 24" TRANSVERSE BANDS WILL BE PAID FOR UNDER A SEPARATE PAY ITEM. REFER TO ROADWAY STANDARD DRAWING 1205.10 FOR ADDITIONAL PAVEMENT MARKING GUIDANCE.
- PAVEMENT MARKING IN ADVANCE OF A HIGHWAY-RAIL CROSSING SHALL CONSIST OF TWO (2) CHARACTERS AND TWO (2) 16" LINES (FORMING AN X) WHICH ARE PAID FOR UNDER TWO SEPARATE PAY ITEMS. THE TWO (2) 24" TRANSVERSE BANDS WILL BE PAID FOR UNDER A SEPARATE PAY ITEM. REFER TO ROADWAY STANDARD DRAWING 1205.11 FOR ADDITIONAL PAVEMENT MARKING GUIDANCE.

ENGLISH DETAIL DRAWING FOR  
**PAVEMENT MARKINGS**  
SYMBOLS AND WORD MESSAGES

17-DEC-2012 14:20  
S:\S&DU\Regions\SJ\gmg\Basis\W-5335\_PMP\W-5335\_Sgn\_PMP\_Sheet+1-2B.dgn  
Drawn: AT 11/24/13

TIP NO. W-5335	SHEET NO. PMP-3
APPROVED: <i>[Signature]</i>	
DATE: 1-10-13	
SEAL	
	

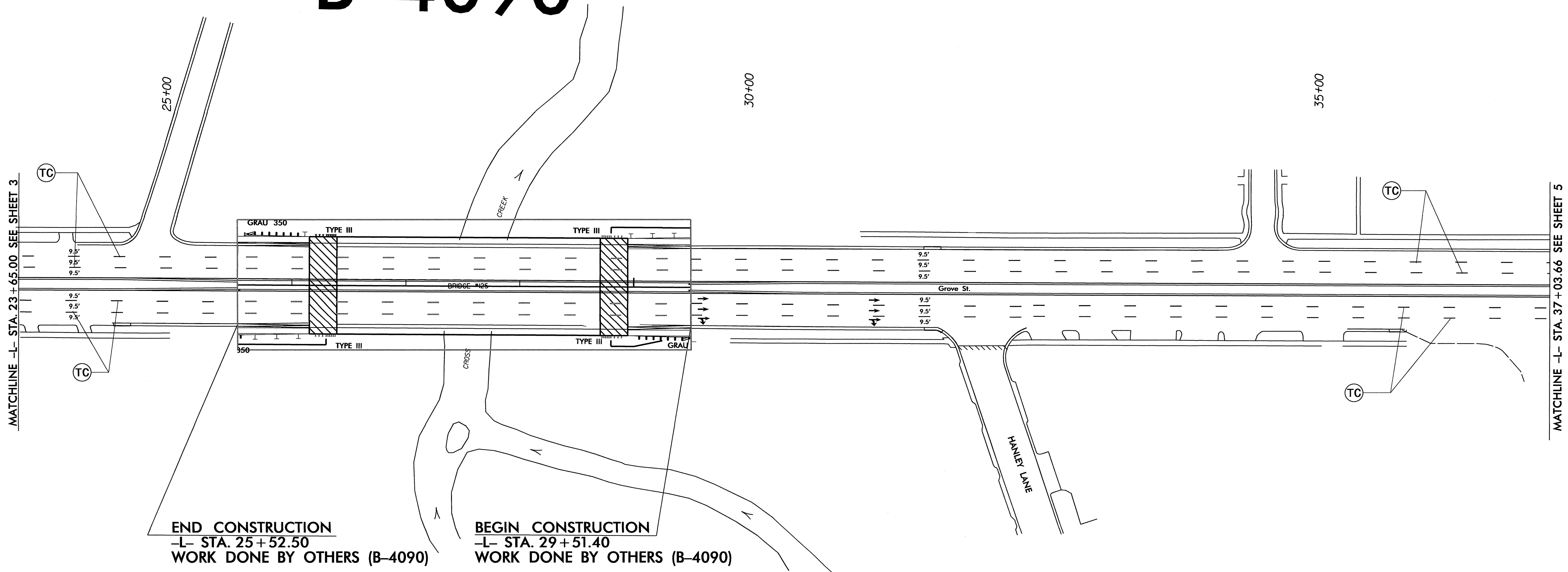
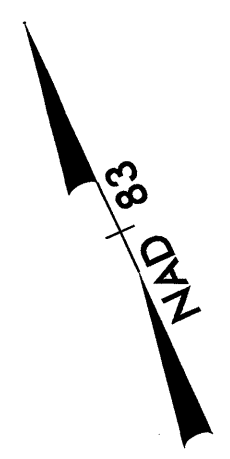


**PAVEMENT MARKING DETAIL**

TIP NO. W-5335	SHEET NO. PMP-4
APPROVED: <i>[Signature]</i>	
DATE: 1-10-13	
SEAL	



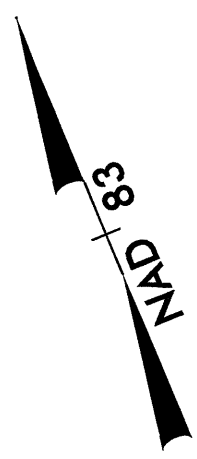
# B-4090



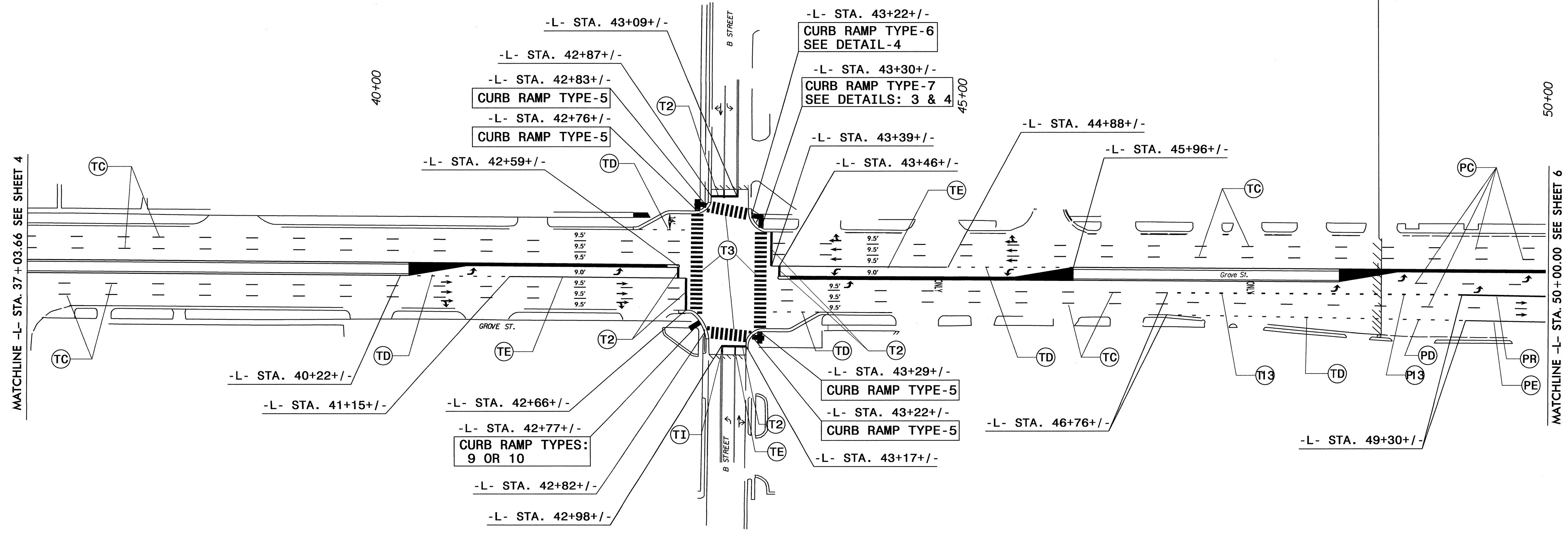
**PAVEMENT MARKING DETAIL**

17-DEC-2012 14:52  
 S:\S&DU\Regions\Signing\Basir\W-5335\PM\W-5335\_Sgn\_pmp\_Sheet-4.dgn  
 brashid AT TE247799

TIP NO.	SHEET NO.
W-5335	PMP-5
APPROVED: <i>[Signature]</i>	
DATE: 1-10-13	
SEAL	



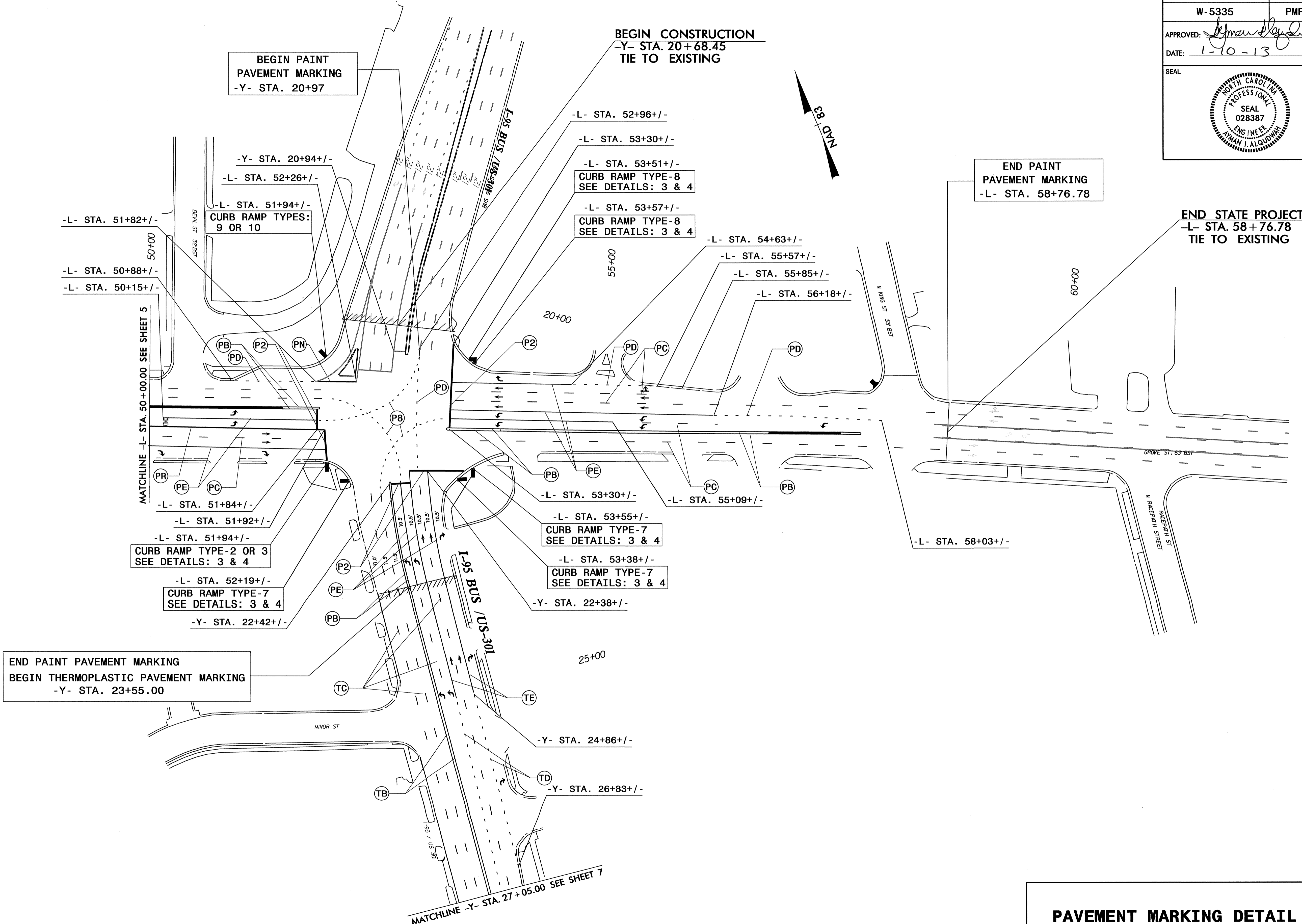
END THERMOPLASTIC PAVEMENT MARKING  
 BEGIN PAINT PAVEMENT MARKING  
 -L- STA. 48+60.00



**PAVEMENT MARKING DETAIL**

I:\7-DEC-2012 14:29  
 S:\S&DU\Regions\Signing\Basis\W-5335\pmp\W-5335\_sign\_pmp\_Sheet-5.dgn  
 AT TE247799  
 broshid

TIP NO.	SHEET NO.
W-5335	PMP-6
APPROVED: <i>[Signature]</i>	
DATE: 1-10-13	
SEAL	

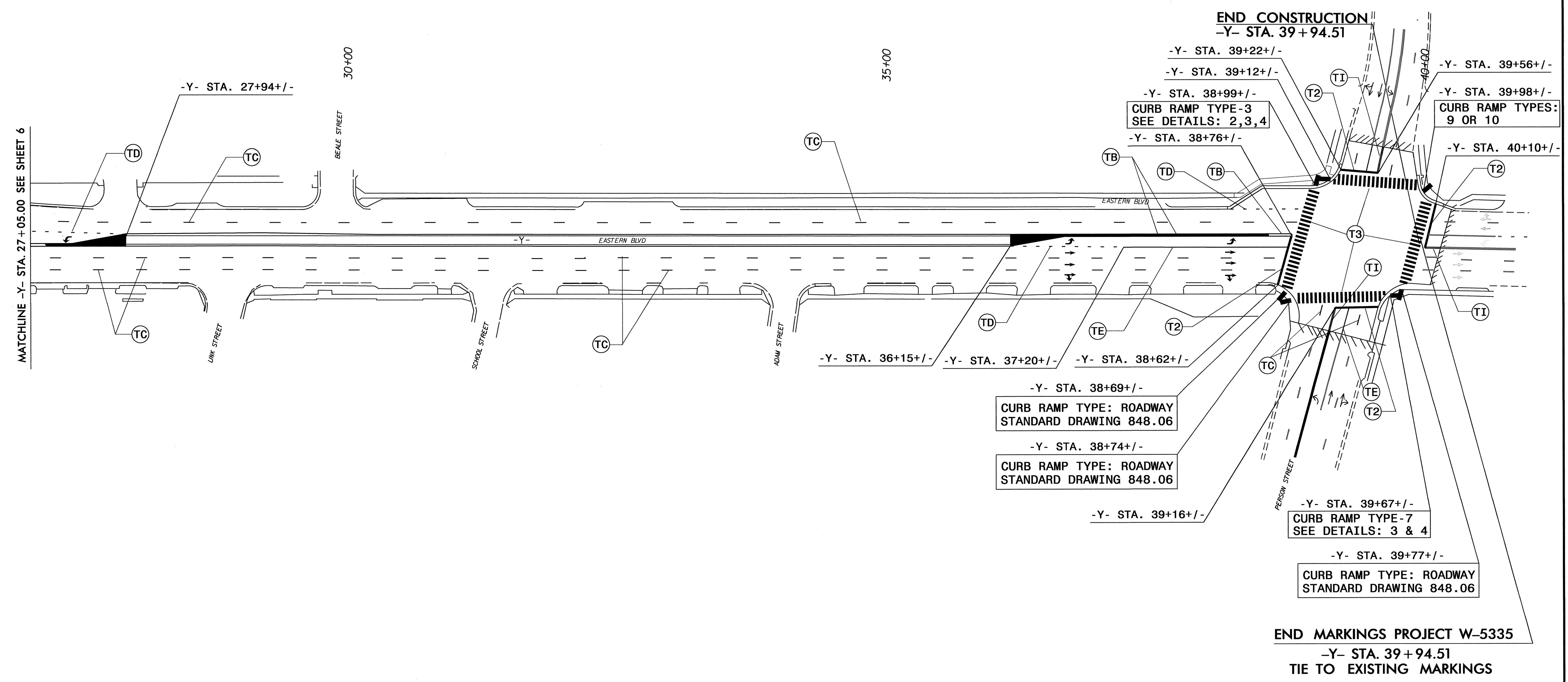
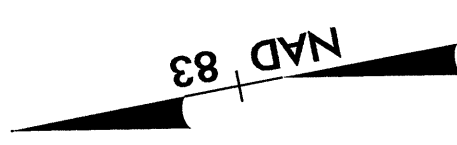


**PAVEMENT MARKING DETAIL**

17-DEC-2012 14:57  
 S:\S&DU\Regions\Signing\Basir\W-5335\PM\W-5335-sign.pmp\_Sheet+6.dgn  
 brashid AT TE247799



TIP NO.	SHEET NO.
W-5335	PMP-7
APPROVED: <i>[Signature]</i>	
DATE: 1-10-13	
SEAL	



**PAVEMENT MARKING DETAIL**

I:\DEC-2012\14-47  
 S:\300\New\Sign\W-5335\PM\W-5335-sign\_pmp-Sheet-7.dgn  
 1/10/13 11:27:18 AM  
 aqashid