

09/08/09
 05-DEC-2012 16:12
 D:\UT\1515\RG\UT\N\Pro\UBO\PLANS\B-4772_UT_U0+sh.dgn
 \$\$\$USERNAME\$\$\$

TIP PROJECT: B-4772

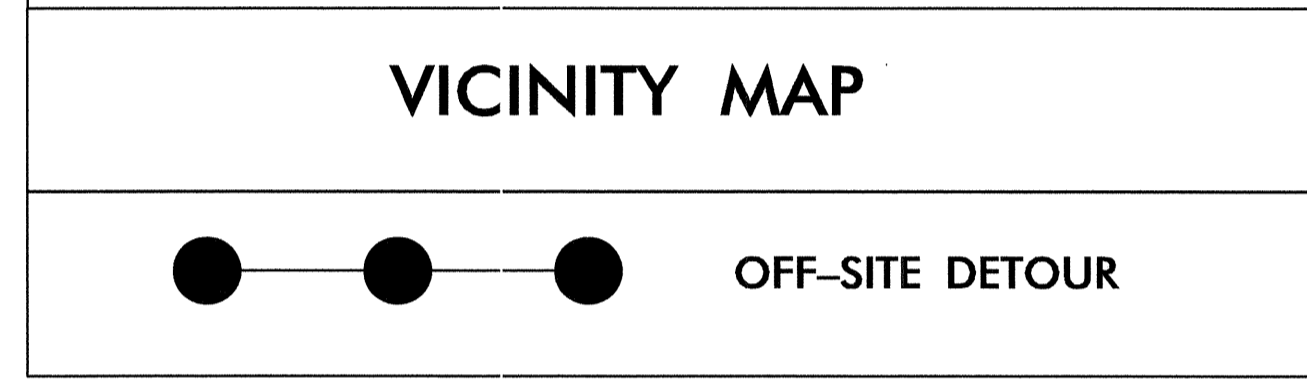
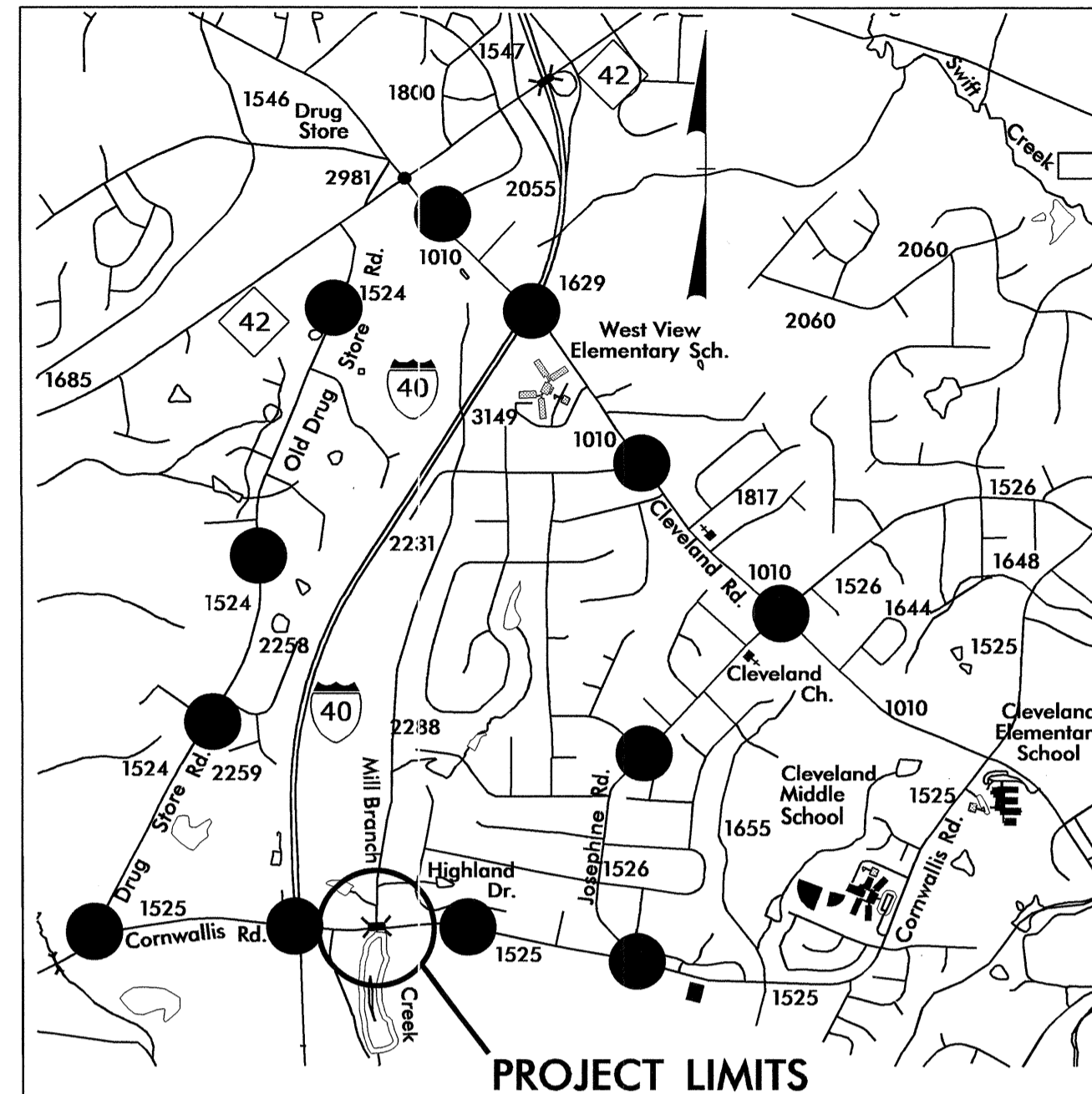
CONTRACT: C203088

T.I.P. NO.	SHEET NO.
B-4772	UO-1

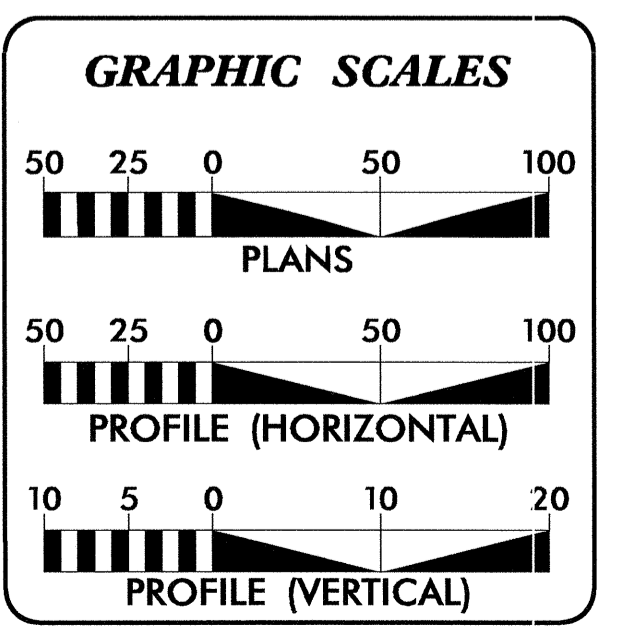
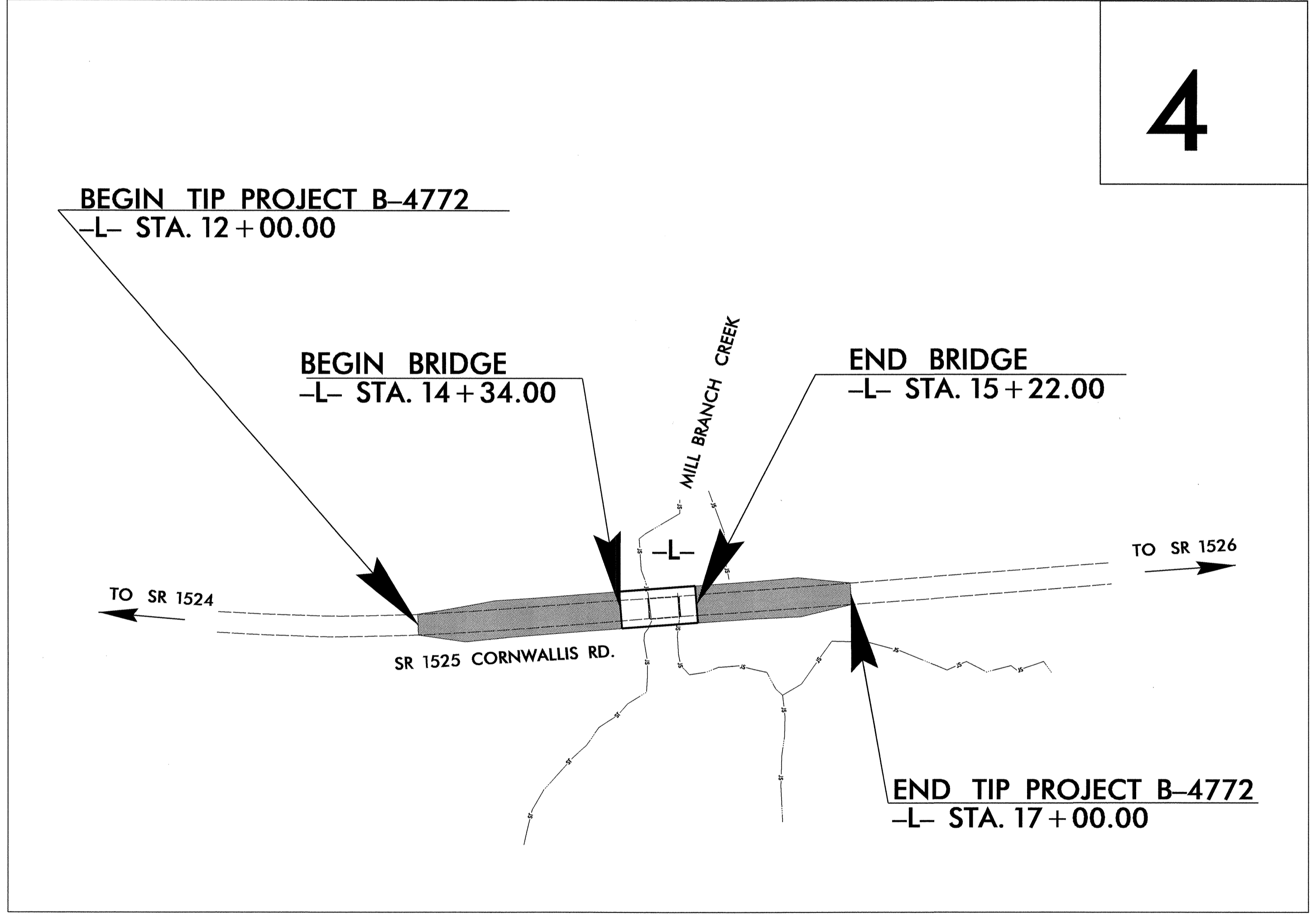
STATE OF NORTH CAROLINA
DIVISION OF HIGHWAYS

**UTILITIES BY OTHERS PLANS
JOHNSTON COUNTY**

**LOCATION: BRIDGE 326 OVER MILL BRANCH CREEK ON (SR 1525), CORNWALLIS RD.
TYPE OF WORK: RELOCATION OF OVERHEAD POWER AND TELEPHONE LINES**



4



INDEX OF SHEETS

SHEET NO.	DESCRIPTION
UO-1	TITLE SHEET
UO-2	UTILITY BY OTHERS PLAN SHEET

UTILITY OWNERS ON PROJECT

(1) PROGRESS ENERGY
(2) CENTURYLINK

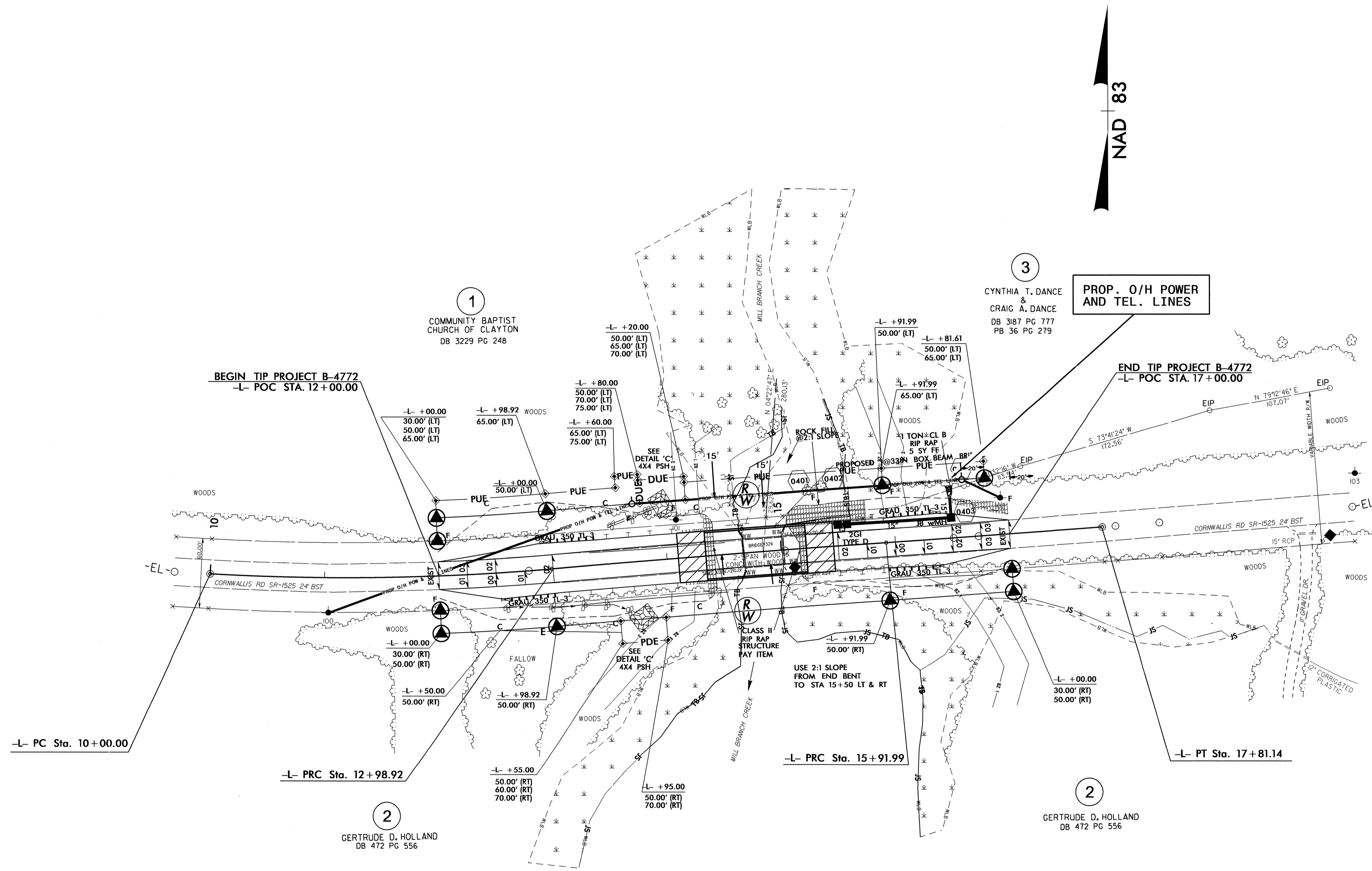
PREPARED IN THE OFFICE OF:
**DIVISION OF HIGHWAYS
 UTILITIES UNIT
 UTILITIES ENGINEERING**

1591 MAIL SERVICES CENTER
 RALEIGH NC 27699-1591
 PHONE (919) 707-6690
 FAX (919) 250-4151

Roger Worthington, P.E.	UTILITIES SECTION ENGINEER
Corey Bousquet, P.E.	UTILITIES SQUAD LEADER PROJECT ENGINEER
Kelvin Martin	UTILITIES PROJECT DESIGNER

UTILITIES BY OTHERS

NOTE:
ALL PROPOSED UTILITY WORK
SHOWN ON THIS SHEET WILL
BE DONE BY OTHERS



06-DEC-2012 09:43
Utilities\1100\1100-PLANS\B-4772-Ut_U0psh.dgn
C:\UBO\PLANS\B-4772-UT_U0PUSHENAM.dwg