

STATE OF NORTH CAROLINA
NCDOT RAIL DIVISION



STATE PROJECT REFERENCE NO.	SHEET NO.
P-5208D	TMP-1

**PLAN FOR PROPOSED
TRAFFIC CONTROL**

CABARRUS COUNTY

P-5208D

ROADWAY STANDARD DRAWINGS

THE FOLLOWING ROADWAY STANDARDS AS APPEAR IN "ROADWAY STANDARD DRAWINGS" - PROJECT SERVICES UNIT - N.C. DEPARTMENT OF TRANSPORTATION - RALEIGH, N.C., DATED JANUARY 2012 ARE APPLICABLE TO THIS PROJECT AND BY REFERENCE HEREBY ARE CONSIDERED A PART OF THESE PLANS:

STD. NO.	TITLE
1101.01	WORK ZONE ADVANCE WARNING SIGNS
1101.02	TEMPORARY LANE CLOSURES
1101.03	TEMPORARY ROAD CLOSURES
1101.11	TRAFFIC CONTROL DESIGN TABLES
1110.01	STATIONARY WORK ZONE SIGNS
1110.02	PORTABLE WORK ZONE SIGNS
1115.01	FLASHING ARROW PANELS
1130.01	DRUMS
1145.01	BARRICADES
1150.01	FLAGGING DEVICES
1205.01	PAVEMENT MARKINGS - LINE TYPES & OFFSETS
1205.02	PAVEMENT MARKINGS - 2 LANE & MULTILANE ROADWAYS
1205.04	PAVEMENT MARKINGS - INTERSECTIONS
1205.05	PAVEMENT MARKINGS - TURN LANES
1205.07	PAVEMENT MARKINGS - PEDESTRIAN CROSSWALKS
1205.08	PAVEMENT MARKINGS - SYMBOLS & WORD MESSAGES
1205.09	PAVEMENT MARKINGS - PAINTED ISLANDS
1205.12	PAVEMENT MARKINGS - BRIDGES

INDEX OF SHEETS

SHEET NO.	TITLE
TMP-1	LIST OF APPLICABLE ROADWAY STANDARD DRAWINGS, LEGEND AND INDEX OF SHEETS
TMP-2	GENERAL NOTES
TMP-3	PROJECT PHASING
TMP-4	PHASE I OVERVIEW
TMP-5 THRU TMP-7	PHASE I DETAILS
TMP-8	PHASE II OVERVIEW
TMP-9 THRU TMP-13	PHASE II DETAILS
TMP-14	-Y1- (STALLINGS RD) AND -Y2- (SCHOOL CIR) DETOURS
TMP-15	ROBINSON CHURCH ROAD DETOUR
TMP-16 THRU TMP-17	DETOUR SIGN DESIGNS

LEGEND

- GENERAL**
- DIRECTION OF TRAFFIC FLOW
 - NORTH ARROW
 - PROPOSED PVMT. EXIST. PVMT.
 - WORK AREA
 - REMOVAL OF EXISTING PAVEMENT
- TRAFFIC CONTROL DEVICES**
- TYPE I BARRICADE
 - TYPE II BARRICADE
 - TYPE III BARRICADE
 - CONE
 - DRUM SKINNY DRUM
 - FLASHING ARROW PANEL (TYPE C)
 - STATIONARY SIGN
 - PORTABLE SIGN
 - STATIONARY OR PORTABLE SIGN
 - CRASH CUSHION
 - CHANGEABLE MESSAGE SIGN
 - TRUCK MOUNTED IMPACT ATTENUATOR (TMIA)
 - POLICE
 - FLAGGER
- PAVEMENT MARKINGS**
- PAVEMENT MARKING SYMBOLS

TIP PROJECT:

MICHAEL BAKER ENGINEERING, INC. 8000 Regency Parkway, Suite 600 Cary, NC 27518 NC LICENSE NO. - F-1084	<p>NC DEPARTMENT OF TRANSPORTATION RAIL DIVISION</p> <p>ENGINEERING AND SAFETY BRANCH CAPITAL YARD 154 RAIL SERVICE CENTER RALEIGH, NC 27616</p>	APPROVED: _____ DATE: _____	PLAN PREPARED BY:
		SEAL	_____ W. S. Hood, PE QC ENGINEER _____ David Wilver, PE PROJECT ENGINEER _____ J. Trueblood PROJECT DESIGNER

GENERAL NOTES

CHANGES MAY BE REQUIRED WHEN PHYSICAL DIMENSIONS IN THE DETAIL DRAWINGS, STANDARD DETAILS, AND ROADWAY DETAILS ARE NOT ATTAINABLE TO MEET FIELD CONDITIONS OR RESULT IN DUPLICATE OR UNDESIRABLE OVERLAPPING OF DEVICES. MODIFICATION MAY INCLUDE: MOVING, SUPPLEMENTING, COVERING, OR REMOVAL OF DEVICES AS DIRECTED BY THE ENGINEER.

THE FOLLOWING GENERAL NOTES APPLY AT ALL TIMES FOR THE DURATION OF THE CONSTRUCTION PROJECT EXCEPT WHEN OTHERWISE NOTED IN THE PLAN OR DIRECTED BY THE ENGINEER.

TIME RESTRICTIONS

A) DO NOT CLOSE OR NARROW TRAVEL LANES AS FOLLOWS:

ROAD NAME	DAY AND TIME RESTRICTIONS
NC 49	MONDAY THRU FRIDAY, 7:00 A.M. TO 9:00 A.M. MONDAY THRU FRIDAY, 4:00 P.M. TO 7:00 P.M.
STALLINGS RD	MONDAY THRU FRIDAY, 7:00 A.M. TO 9:00 A.M. MONDAY THRU FRIDAY, 2:00 P.M. TO 6:00 P.M. (SCHOOL DAYS) MONDAY THRU FRIDAY, 4:00 P.M. TO 6:00 P.M. (NON-SCHOOL DAYS)
HICKORY RIDGE ROAD	MONDAY THRU FRIDAY, 7:00 A.M. TO 9:00 A.M. MONDAY THRU FRIDAY, 2:00 P.M. TO 6:00 P.M. (SCHOOL DAYS) MONDAY THRU FRIDAY, 4:00 P.M. TO 6:00 P.M. (NON-SCHOOL DAYS)
SCHOOL CIRCLE	MONDAY THRU FRIDAY, 7:00 A.M. TO 9:00 A.M. MONDAY THRU FRIDAY, 2:00 P.M. TO 6:00 P.M. (SCHOOL DAYS) MONDAY THRU FRIDAY, 4:00 P.M. TO 6:00 P.M. (NON-SCHOOL DAYS)

B) DO NOT CLOSE OR NARROW TRAVEL LANES DURING HOLIDAYS AND SPECIAL EVENTS AS FOLLOWS:

ROAD NAME

NC 49

HOLIDAY

- FOR ANY UNEXPECTED OCCURRENCE THAT CREATES UNUSUALLY HIGH TRAFFIC VOLUMES, AS DIRECTED BY THE ENGINEER.
- FOR NEW YEAR'S, BETWEEN THE HOURS OF 7:00 A.M. DECEMBER 31st AND 7:00 P.M. JANUARY 2ND. IF NEW YEAR'S DAY IS ON A FRIDAY, SATURDAY, SUNDAY, OR MONDAY, THEN UNTIL 7:00 P.M. THE FOLLOWING TUESDAY.
- FOR EASTER, BETWEEN THE HOURS OF 7:00 A.M. THURSDAY AND 7:00 P.M. MONDAY.
- FOR MEMORIAL DAY, BETWEEN THE HOURS OF 7:00 A.M. FRIDAY TO 7:00 P.M. TUESDAY.
- FOR INDEPENDENCE DAY, BETWEEN THE HOURS OF 7:00 A.M. THE DAY BEFORE INDEPENDENCE DAY AND 7:00 P.M. THE DAY AFTER INDEPENDENCE DAY.
IF INDEPENDENCE DAY IS ON A FRIDAY, SATURDAY, SUNDAY OR MONDAY, THEN BETWEEN THE HOURS OF 7:00 A.M. THE THURSDAY BEFORE INDEPENDENCE DAY AND 7:00 P.M. THE TUESDAY AFTER INDEPENDENCE DAY.
- FOR LABOR DAY, BETWEEN THE HOURS OF 7:00 A.M. FRIDAY AND 7:00 P.M. TUESDAY.
- FOR THANKSGIVING DAY, BETWEEN THE HOURS OF 7:00 A.M. TUESDAY AND 7:00 P.M. MONDAY.
- FOR CHRISTMAS, BETWEEN THE HOURS OF 7:00 A.M. THE FRIDAY BEFORE THE WEEK OF CHRISTMAS DAY AND 7:00 P.M. THE FOLLOWING TUESDAY AFTER THE WEEK OF CHRISTMAS DAY.
- FOR ANY NASCAR EVENT, AT THE CHARLOTTE MOTOR SPEEDWAY, BETWEEN THE HOURS OF 7:00 A.M. THE THURSDAY BEFORE THE WEEKEND OF THE EVENT AND 7:00 P.M. THE FOLLOWING MONDAY AFTER THE EVENT.

LANE AND SHOULDER CLOSURE REQUIREMENTS

- C) REMOVE LANE CLOSURE DEVICES FROM THE LANE WHEN WORK IS NOT BEING PERFORMED BEHIND THE LANE CLOSURE OR WHEN A LANE CLOSURE IS NO LONGER NEEDED OR AS DIRECTED BY THE ENGINEER.
- D) WHEN PERSONNEL AND/OR EQUIPMENT ARE WORKING WITHIN 15 FT OF AN OPEN TRAVEL LANE, CLOSE THE NEAREST OPEN SHOULDER USING ROADWAY STANDARD DRAWING NO. 1101.04 UNLESS THE WORK AREA IS PROTECTED BY BARRIER OR GUARDRAIL OR A LANE CLOSURE IS INSTALLED.
- E) WHEN PERSONNEL AND/OR EQUIPMENT ARE WORKING ON THE SHOULDER ADJACENT TO AN UNDIVIDED FACILITY AND WITHIN 5 FT OF AN OPEN TRAVEL LANE, CLOSE THE NEAREST OPEN TRAVEL LANE USING ROADWAY STANDARD DRAWING NO. 1101.02 UNLESS THE WORK AREA IS PROTECTED BY BARRIER OR GUARDRAIL.

WHEN PERSONNEL AND/OR EQUIPMENT ARE WORKING ON THE SHOULDER ADJACENT TO A DIVIDED FACILITY AND WITHIN 10 FT OF AN OPEN TRAVEL LANE, CLOSE THE NEAREST OPEN TRAVEL LANE USING ROADWAY STANDARD DRAWING NO. 1101.02 UNLESS THE WORK AREA IS PROTECTED BY BARRIER OR GUARDRAIL.

F) WHEN PERSONNEL AND/OR EQUIPMENT ARE WORKING WITHIN A LANE OF TRAVEL OF AN UNDIVIDED OR DIVIDED FACILITY, CLOSE THE LANE ACCORDING TO THE TRAFFIC CONTROL PLANS, ROADWAY STANDARD DRAWINGS, OR AS DIRECTED BY THE ENGINEER. CONDUCT THE WORK SO THAT ALL PERSONNEL AND/OR EQUIPMENT REMAIN WITHIN THE CLOSED TRAVEL LANE.

G) DO NOT WORK SIMULTANEOUSLY WITHIN 15 FT ON BOTH SIDES OF AN OPEN TRAVELWAY, RAMP, OR LOOP WITHIN THE SAME LOCATION UNLESS PROTECTED WITH GUARDRAIL OR BARRIER.

PAVEMENT EDGE DROP OFF REQUIREMENTS

H) BACKFILL AT A 6:1 SLOPE UP TO THE EDGE AND ELEVATION OF EXISTING PAVEMENT IN AREAS ADJACENT TO AN OPEN TRAVEL LANE THAT HAS A DROP-OFF AS FOLLOWS:

*BACKFILL DROP-OFFS THAT EXCEED 2 INCHES ON ROADWAYS WITH POSTED SPEED LIMITS OF 45 MPH OR GREATER.

*BACKFILL DROP-OFFS THAT EXCEED 3 INCHES ON ROADWAYS WITH POSTED SPEED LIMITS LESS THAN 45 MPH.

*BACKFILL WITH SUITABLE COMPACTED MATERIAL, AS APPROVED BY THE ENGINEER, AT NO EXPENSE TO THE DEPARTMENT.

I) DO NOT EXCEED A DIFFERENCE OF 2 INCHES IN ELEVATION BETWEEN OPEN LANES OF TRAFFIC FOR NOMINAL LIFTS OF 1.5 INCHES. INSTALL ADVANCE WARNING "UNEVEN LANES" SIGNS (WB-11) 175 FT IN ADVANCE AND A MINIMUM OF ONCE EVERY HALF MILE THROUGHOUT THE UNEVEN AREA.

TRAFFIC PATTERN ALTERATIONS

J) NOTIFY THE ENGINEER TWENTY ONE (21) CALENDAR DAYS PRIOR TO ANY TRAFFIC PATTERN ALTERATION.

SIGNING

K) INSTALL ADVANCE WORK ZONE WARNING SIGNS WHEN WORK IS WITHIN 40 FT FROM THE EDGE OF TRAVEL LANE AND NO MORE THAN THREE (3) DAYS PRIOR TO THE BEGINNING OF CONSTRUCTION.

L) PROVIDE SIGNING AND DEVICES REQUIRED TO CLOSE THE ROAD ACCORDING TO THE ROADWAY STANDARD DRAWINGS AND TRAFFIC CONTROL PLANS.

PROVIDE SIGNING REQUIRED FOR THE OFF-SITE DETOUR ROUTE AS SHOWN IN THE TRAFFIC CONTROL PLANS.

M) COVER OR REMOVE ALL SIGNS AND DEVICES REQUIRED TO CLOSE THE ROAD WHEN ROAD CLOSURE IS NOT IN OPERATION.

COVER OR REMOVE ALL SIGNS REQUIRED FOR THE OFF-SITE DETOUR WHEN THE DETOUR IS NOT IN OPERATION.

N) ENSURE ALL NECESSARY SIGNING IS IN PLACE PRIOR TO ALTERING ANY TRAFFIC PATTERN.

TRAFFIC CONTROL DEVICES

O) WHEN LANE CLOSURES ARE NOT IN EFFECT SPACE CHANNELIZING DEVICES IN WORK AREAS NO GREATER IN FEET THAN TWICE THE POSTED SPEED LIMIT (MPH), EXCEPT, 10 FT ON-CENTER IN RADII, AND 3 FT OFF THE EDGE OF AN OPEN TRAVELWAY. REFER TO STANDARD SPECIFICATIONS FOR ROADS AND STRUCTURES SECTIONS 1130 (DRUMS), 1135 (CONES) AND 1180 (SKINNY DRUMS) FOR ADDITIONAL REQUIREMENTS.

P) PLACE TYPE III BARRICADES, WITH "ROAD CLOSED" SIGN R11-2 ATTACHED, OF SUFFICIENT LENGTH TO CLOSE ENTIRE ROADWAY.

Q) PLACE ADDITIONAL SETS OF THREE CHANNELIZING DEVICES (DRUMS, CONES OR SKINNY DRUMS) PERPENDICULAR TO THE EDGE OF TRAVELWAY ON 500 FT CENTERS WHEN UNOPENED LANES ARE CLOSED TO TRAFFIC.

PAVEMENT MARKINGS AND MARKERS

R) INSTALL TEMPORARY PAVEMENT MARKINGS AND TEMPORARY PAVEMENT MARKERS ON INTERIM LAYERS OF PAVEMENT AS FOLLOWS:

ROAD NAME	MARKING	MARKER
ALL ROADS	PAINT	NONE
BRIDGE	COLD APPLIED PLASTIC,	NONE
	TYPE 4 (REMOVABLE TAPE)	

S) PLACE ONE APPLICATION OF PAINT FOR TEMPORARY TRAFFIC PATTERNS. PLACE A SECOND APPLICATION OF PAINT SIX (6) MONTHS AFTER THE INITIAL APPLICATION AND EVERY SIX MONTHS AS DIRECTED BY THE ENGINEER.

T) TIE PROPOSED PAVEMENT MARKING LINES TO EXISTING PAVEMENT MARKING LINES.

U) REMOVE/REPLACE ANY CONFLICTING/DAMAGED PAVEMENT MARKINGS AND MARKERS BY THE END OF EACH DAY'S OPERATION.

MISCELLANEOUS

V) LAW ENFORCEMENT MAY BE USED TO MAINTAIN TRAFFIC THROUGH THE WORK AREA AND/OR INTERSECTIONS AS DIRECTED BY THE ENGINEER.

W) ALL CURB RAMP LOCATIONS SHALL BE DERIVED FROM STATIONING SHOWN ON PAVEMENT MARKING PLANS OR AS DIRECTED BY THE ENGINEER IN COORDINATION WITH THE SIGNING AND DELINEATION UNIT.

X) CONTRACTOR SHALL MAINTAIN SIDEWALK ACCESS AT ALL TIMES AS STATED IN THE PHASING. CONTRACTOR SHALL BE RESPONSIBLE TO PROVIDE TEMPORARY SIDEWALKS (CONCRETE, ASPHALT, OR OTHER SUITABLE MATERIAL AS APPROVED BY THE ENGINEER) AT ALL LOCATIONS WHERE THE OPEN PEDESTRIAN TRAVELWAY HAS BEEN REMOVED FOR CONSTRUCTION OPERATIONS (UTILITIES, DRAINAGE, ETC.).

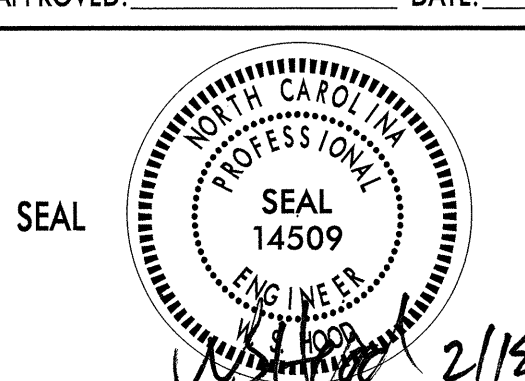
Y) CONTRACTOR SHALL PLACE CHANGEABLE MESSAGE SIGNS (CMS), AS DIRECTED BY THE ENGINEER, ONE WEEK PRIOR TO CLOSING A ROADWAY TO ALERT THE TRAVELING PUBLIC OF THE IMPENDING CLOSURE.

0077DEL_P10a4

I:\FEB-2013\17103\Projects\52080\DISCIPLINE\TrafficControl\TFCP\52080_tcp_notes_02.dgn
AT CARTER WILKINSON

MICHAEL BAKER ENGINEERING, INC.
8000 Regency Parkway, Suite 600
Cary, NC 27518

NC LICENSE NO. - F-1084

APPROVED: _____ DATE: _____	PROJECT NOTES	
		
SCALE: NONE	DATE: 09/12	REVISIONS
DESIGN BY: _____	REVIEWED BY: _____	

PHASE I (SEE OVERVIEW TMP-4)

PHASING

PROJ. REFERENCE NO.	SHEET NO.
P-5208D	TMP-3

NOTES: COORDINATE WITH THE ENGINEER FOR INSTALLATION AND REMOVAL OF ALL SIGNING AND TRAFFIC CONTROL DEVICES.

STEP 1: USING NCDOT STD 1101.01, SHEET 2 & 3 OF 3, INSTALL ADVANCE WARNING SIGNS FOR ALL ROADWAYS.

NOTE: CONTRACTOR SHALL WORK PHASE 1, STEPS 2 AND 4 CONCURRENTLY.

STEP 2:

- CLOSE -Y3- TO TRAFFIC (SEE SHEET TMP-5) AND CONSTRUCT RAILROAD ROADBED GRADING, DRAINAGE AND RETAINING WALL - SEE RAILROAD ROADBED PLANS.
- CONSTRUCT -SRVRD- AND CURVE IMPROVEMENT ON -Y3- UP TO BUT NOT INCLUDING THE FINAL LAYER OF SURFACE COURSE, AND REMOVE PAVEMENT AND PLACE TEMPORARY PAVEMENT MARKINGS (PAINT) (SEE SHEET TMP-5 AND FINAL PAVEMENT MARKING PLANS).
- BEGIN CONSTRUCTION OF -L- AS MUCH AS POSSIBLE UP TO BUT NOT INCLUDING THE FINAL LAYER OF SURFACE COURSE WITHOUT IMPACTING EXISTING TRAFFIC FLOWS. ONCE -SRVRD- IS COMPLETE AND OPEN TO TRAFFIC/ACCESS, CLOSE MARTIN ST. AND CONTINUE CONSTRUCTION OF -L- AWAY FROM TRAFFIC. (SEE TMP-6 AND TMP-7)
- USING NCDOT STD 1101.02, SHEET 1 OF 15, BEGIN CONSTRUCTION -Y1- STA 8+10 TO STA 10+50 AND -Y3- STA 11+45 TO STA 17+50 UP TO BUT NOT INCLUDING THE FINAL LAYER OF SURFACE COURSE (SEE SHEET TMP-5).
- USING NCDOT STD 1101.02, SHEET 3 OF 15, BEGIN CONSTRUCTION -Y4- STA 14+00 TO STA 17+30 UP TO BUT NOT INCLUDING THE FINAL LAYER OF SURFACE COURSE (SEE SHEET TMP-7).
- USING NCDOT STD 1101.02, SHEET 1 AND 3 OF 15, BEGIN CONSTRUCTION OF REVISED SIGNAL AT -L- AND -Y4-, TO BE COMPLETED BY PHASE II, STEP 1C.
- AFTER COMPLETION OF THE RAILROAD ROADBED, NORFOLK SOUTHERN WILL CONSTRUCT NEW TRACK 1 (-M1-) THROUGH THE PROJECT LIMITS REQUIRING A TEMPORARY CLOSURE OF THE ROBINSON CHURCH ROAD AT-GRADE RAILROAD CROSSING. COORDINATE WITH NORFOLK SOUTHERN TO DETERMINE WHEN THE TEMPORARY CLOSURE WILL OCCUR, AND FOR WHAT DURATION IT IS REQUIRED. SEE SHEET TMP-17 FOR DETOUR ROUTE.

STEP 3: ONCE NORFOLK SOUTHERN HAS ROUTED RAIL TRAFFIC ONTO NEW RAIL LINES AND REMOVED THE OLD TRACK:

- COMPLETE CONSTRUCTION OF -L- STA 10+00 TO STA 30+12 AND THE BRIDGE AND APPROACHES UP TO BUT NOT INCLUDING THE FINAL LAYER OF SURFACE COURSE.

THE CONTRACTOR SHALL WORK IN A CONTINUOUS MANNER TO COMPLETE THE WORK IN PHASE I, STEP 4A THRU 4C IN 120 CONSECUTIVE DAYS (SEE INTERMEDIATE CONTRACT TIME AND SPECIAL PROVISIONS).

STEP 4: WHILE MAINTAINING LOCAL ACCESS, INSTALL DETOUR (SEE SHEET TMP-14) AND CONSTRUCT -Y1- FROM STA 10+50 TO STA 22+28 UP TO BUT NOT INCLUDING THE FINAL LAYER OF SURFACE COURSE, AS FOLLOWS:

NOTE: MAINTAIN ACCESS TO ALL DRIVEWAYS DURING CONSTRUCTION AS DIRECTED BY THE ENGINEER.

- A. INSTALL DETOUR (SEE SHEET TMP-14) AND USING NCDOT STD 1101.03, SHEET 1 & 2 OF 9, CLOSE -Y1- FROM STA. 10+50 TO STA 22+28 (SEE SHEETS TMP-5 AND TMP-6).
 - B. CONSTRUCT PROPOSED -Y1- FROM STA 10+50 TO STA 22+28 UP TO BUT NOT INCLUDING THE FINAL LAYER OF SURFACE COURSE (SEE SHEETS TMP-5 AND TMP-6).
 - C. PLACE TEMPORARY PAVEMENT MARKINGS (PAINT) AND OPEN -Y1- TO FINAL TRAFFIC PATTERN (SEE FINAL PAVEMENT MARKING PLANS)
- NOTE: KEEP PROPOSED -L- CLOSED UTILIZING TYPE III BARRICADES AND INSTALL DRUMS TO CLOSE -Y- LEFT AND RIGHT TURN LANES.

PHASE II (SEE OVERVIEW TMP-8)

THE CONTRACTOR SHALL WORK IN A CONTINUOUS MANNER TO COMPLETE THE WORK IN PHASE II, STEP 1A THRU 1C IN 30 CONSECUTIVE DAYS (SEE INTERMEDIATE CONTRACT TIME AND SPECIAL PROVISIONS).

STEP 1 WHILE MAINTAINING LOCAL ACCESS, INSTALL -Y2- DETOUR (SEE SHEET TMP-14).

- CLOSE -Y2- TO THROUGH TRAFFIC (SEE SHEET TMP-9) AND CONSTRUCT -Y2- STA 11+00 TO STA 14+03 AND COMPLETE -L- STA 10+00 TO STA 34+61 UP TO BUT NOT INCLUDING THE FINAL LAYER OF SURFACE COURSE, AS FOLLOWS:

NOTE: MAINTAIN ACCESS TO ALL DRIVEWAYS DURING CONSTRUCTION AS DIRECTED BY THE ENGINEER.

- A. INSTALL DETOUR (SEE SHEET TMP-14) AND USING NCDOT STD 1101.03, SHEET 2 OF 9, CLOSE -Y2- FROM THE INTERSECTION WITH -Y3- TO THE INTERSECTION WITH -Y4- (SEE SHEET TMP-9).
- B. CONSTRUCT PROPOSED -L- FROM STA 30+12 TO STA 34+20 AND PROPOSED -Y2- FROM STA 11+00 TO STA 14+03 UP TO BUT NOT INCLUDING THE FINAL LAYER OF SURFACE COURSE (SEE SHEET TMP-6).
- C. PLACE TEMPORARY PAVEMENT MARKINGS AND OPEN -L- AND -Y2- TO FINAL TRAFFIC PATTERN (SEE FINAL PAVEMENT MARKING PLANS).

STEP 2: USING NCDOT STD 1101.02, SHEETS 1 & 3 OF 15:

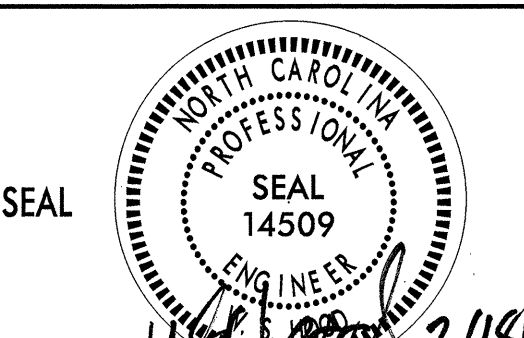

- COMPLETE CONSTRUCTION OF -Y1- FROM STA 8+10 TO STA 10+50 UP TO BUT NOT INCLUDING THE FINAL LAYER OF SURFACE COURSE ,
- COMPLETE CONSTRUCTION OF -Y3- UP TO BUT NOT INCLUDING THE FINAL LAYER OF SURFACE COURSE.
- COMPLETE CONSTRUCTION OF -Y4- STA 14+00 TO STA 19+15 UP TO BUT NOT INCLUDING THE FINAL LAYER OF SURFACE COURSE (SEE SHEET TMP-9).
- PLACE TEMPORARY PAVEMENT MARKINGS (PAINT) AND OPEN -Y1-, -Y3-, & -Y4- TO FINAL TRAFFIC PATTERN (SEE FINAL PAVEMENT MARKING PLANS).
- REMOVING DETOUR AND TEMPORARY DETOUR SIGNING.

STEP 3: USING NCDOT STD 1101.02, SHEETS 1 & 3 OF 15, INSTALL FINAL LAYER OF SURFACE COURSE, MARKERS AND FINAL PAVEMENT MARKINGS FOR ALL ROADWAYS, INCLUDING RAISED MARKERS ON -Y4-.

STEP 4: REMOVE ALL REMAINING TRAFFIC CONTROL DEVICES, STATIONARY TRAFFIC CONTROL SIGNING AND ADVANCE WARNING SIGNS.

MICHAEL BAKER ENGINEERING, INC.
8000 Regency Parkway, Suite 600
Cary, NC 27518

NC LICENSE NO. - F-1084

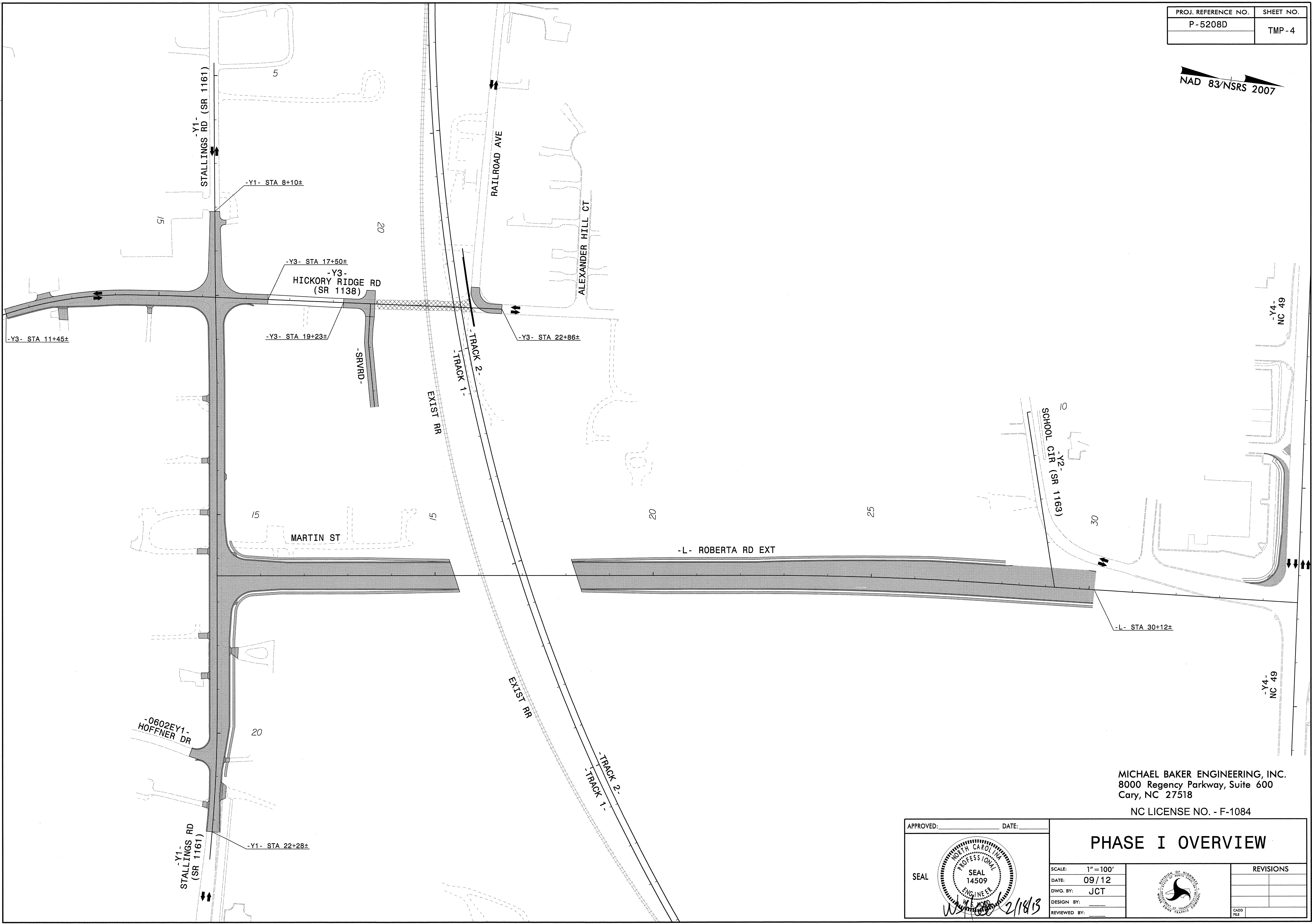
APPROVED: _____	DATE: _____	PHASING	
	SCALE: NONE		REVISIONS
	DATE: 09/12		
	DWG. BY: JCT		
	DESIGN BY: _____		
	REVIEWED BY: _____		CADD FILE

PROJ. REFERENCE NO.	SHEET NO.
P-5208D	TMP-4

NAD 83/NSRS 2007

0077DEL_P10a4

13-FEB-2013 17:03
 W:\Projects\WCDOT\13-5208D\DISCIPLINE\Traffic\TrafficControl\TCP\F5208D_tcp_phi0V_psh_04.dgn
 WEJohnson AT CARY\WJJOHNSON



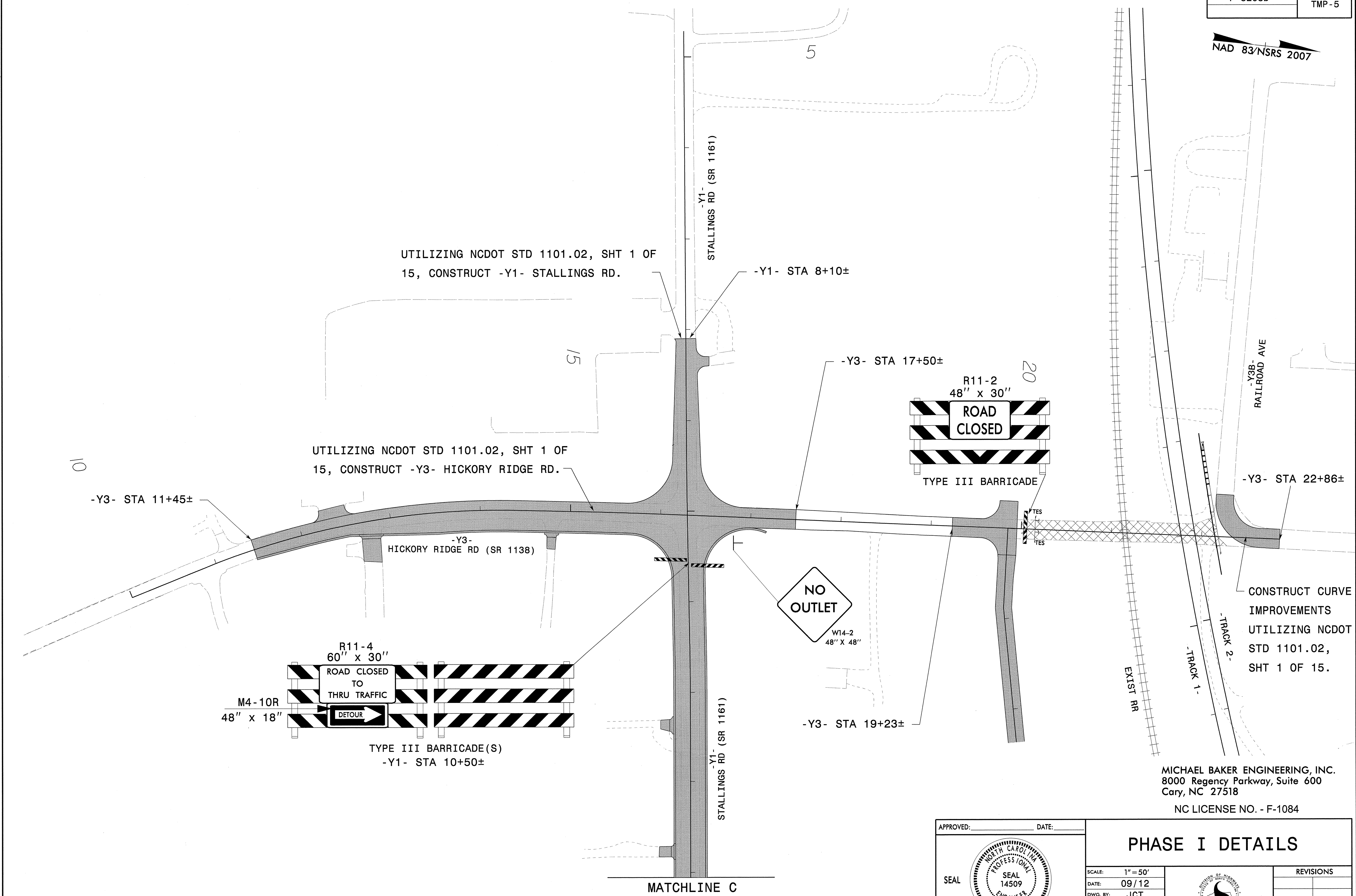
MICHAEL BAKER ENGINEERING, INC.
 8000 Regency Parkway, Suite 600
 Cary, NC 27518
 NC LICENSE NO. - F-1084

APPROVED: _____	DATE: _____								
	SCALE: 1" = 100'								
	DATE: 09/12								
	DWG. BY: JCT								
	DESIGN BY: _____								
REVIEWED BY: _____	<table border="1"> <thead> <tr> <th colspan="2">REVISIONS</th> </tr> </thead> <tbody> <tr> <td> </td> <td> </td> </tr> <tr> <td> </td> <td> </td> </tr> <tr> <td> </td> <td> </td> </tr> </tbody> </table>	REVISIONS							
REVISIONS									

PROJ. REFERENCE NO.	SHEET NO.
P-5208D	TMP-5

NAD 83/NSRS 2007

0077DEL_P10a4



18-FEB-2013 10:45
 I:\Projects\NCDOT\TP-5208D\DISCIPLINE\Traffic\TrafficControl\TCP\5208D-tpcp-ph10Tpsh_05.dgn
 WEDMONSON AT CARY\WEDMONSON

MICHAEL BAKER ENGINEERING, INC.
 8000 Regency Parkway, Suite 600
 Cary, NC 27518
 NC LICENSE NO. - F-1084

APPROVED: _____	DATE: _____
PHASE I DETAILS	
SCALE: 1" = 50'	REVISIONS
DATE: 09/12	
DWG. BY: JCT	
DESIGN BY: _____	
REVIEWED BY: _____	

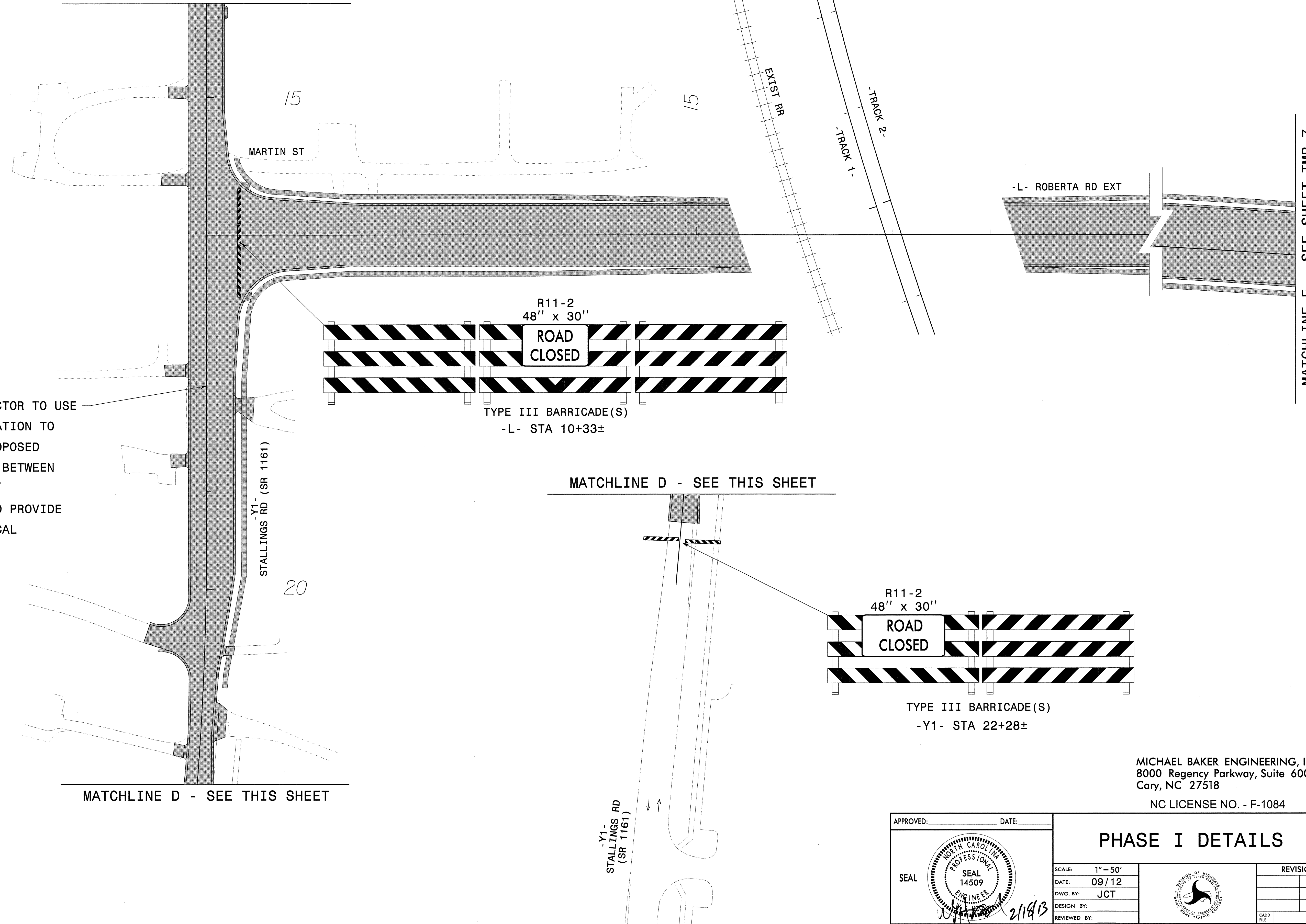
PROJ. REFERENCE NO.	SHEET NO.
P-5208D	TMP-6

NAD 83/NSRS 2007

0077DEL_P10a4

MATCHLINE C - SEE SHEET TMP-5

NOTE: CONTRACTOR TO USE FLAGGER OPERATION TO CONSTRUCT PROPOSED IMPROVEMENTS BETWEEN "ROAD CLOSED" BARRICADES TO PROVIDE ACCESS TO LOCAL TRAFFIC.



MATCHLINE E - SEE SHEET TMP-7

MATCHLINE D - SEE THIS SHEET

MATCHLINE D - SEE THIS SHEET

MICHAEL BAKER ENGINEERING, INC.
8000 Regency Parkway, Suite 600
Cary, NC 27518

NC LICENSE NO. - F-1084

APPROVED: _____ DATE: _____	PHASE I DETAILS		REVISIONS	
			SCALE: 1" = 50'	
	DATE: 09/12			
	DWG. BY: JCT			
DESIGN BY: _____				
REVIEWED BY: _____				

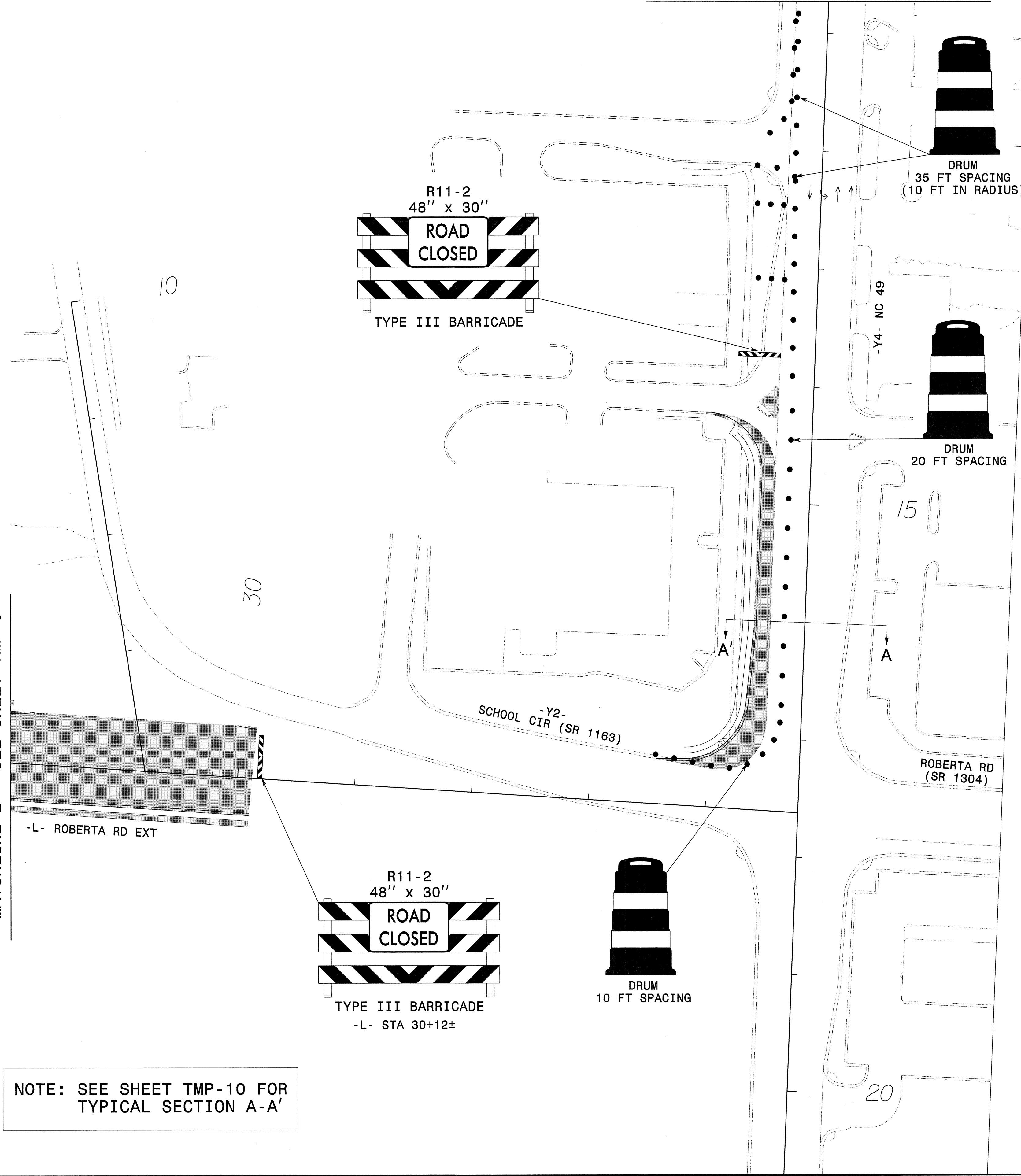
13-FEB-2013 7:03
 W:\Projects\5208D\T\5208D\DISCIPLINE\Traffic\TrafficControl\TCP\5208D_tcp.phidTpsht_06.dgn
 WEJ\johnson AT CARY\WJOHNSON

0077DEL_P10a4

PROJ. REFERENCE NO.	SHEET NO.
P-5208D	TMP-7

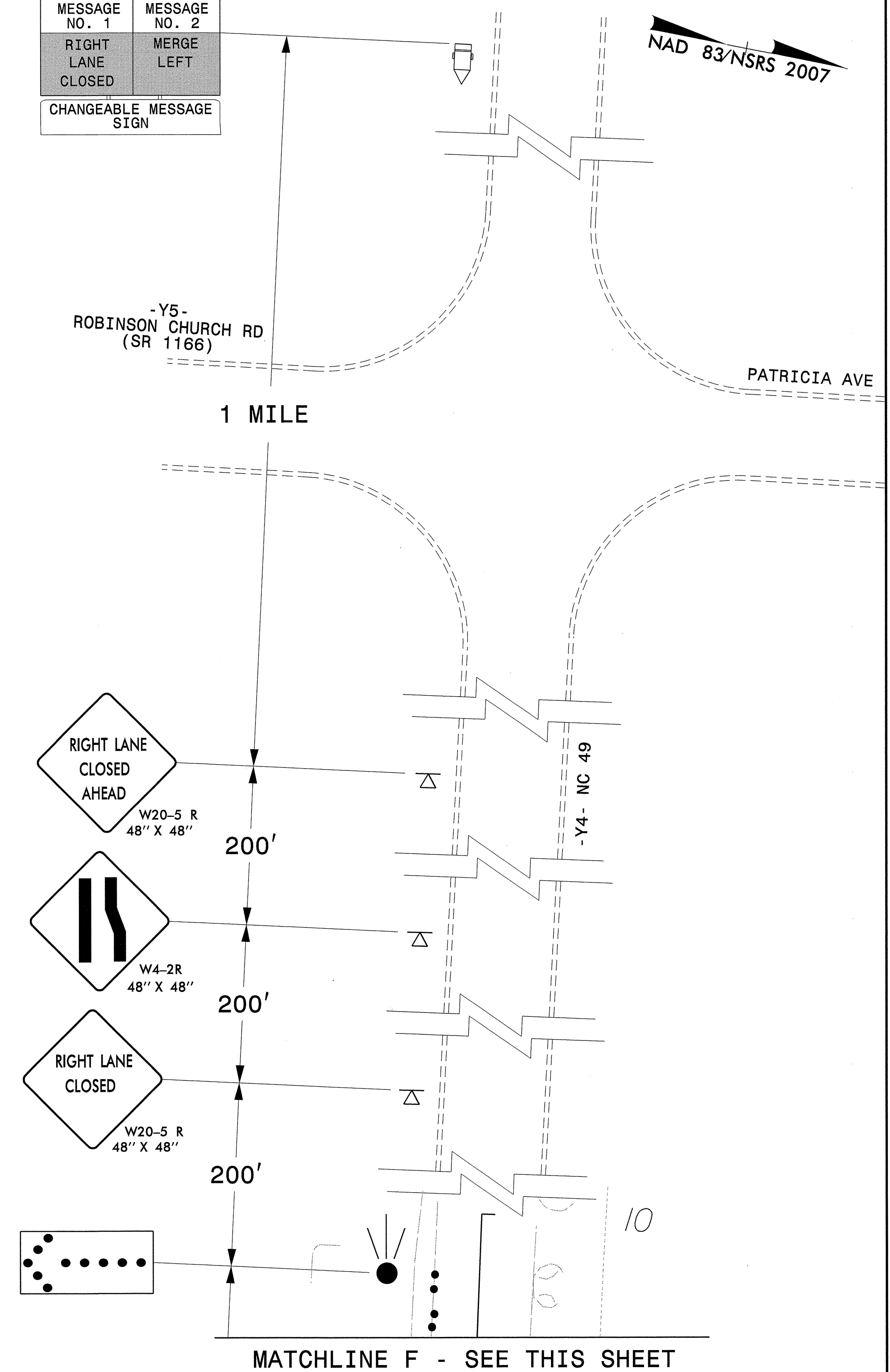
MATCHLINE F - SEE THIS SHEET

MATCHLINE E - SEE SHEET TMP-6



NOTE: SEE SHEET TMP-10 FOR TYPICAL SECTION A-A'

MESSAGE NO. 1	MESSAGE NO. 2
RIGHT LANE CLOSED	MERGE LEFT
CHANGEABLE MESSAGE SIGN	



MATCHLINE F - SEE THIS SHEET

MICHAEL BAKER ENGINEERING, INC.
 8000 Regency Parkway, Suite 600
 Cary, NC 27518
 NC LICENSE NO. - F-1084

APPROVED: _____ DATE: _____

SEAL

PHASE I DETAILS		REVISIONS	
SCALE: 1" = 50'	DATE: 09/12		
DWG. BY: JCT	DESIGN BY:		
REVIEWED BY:		CADD FILE	

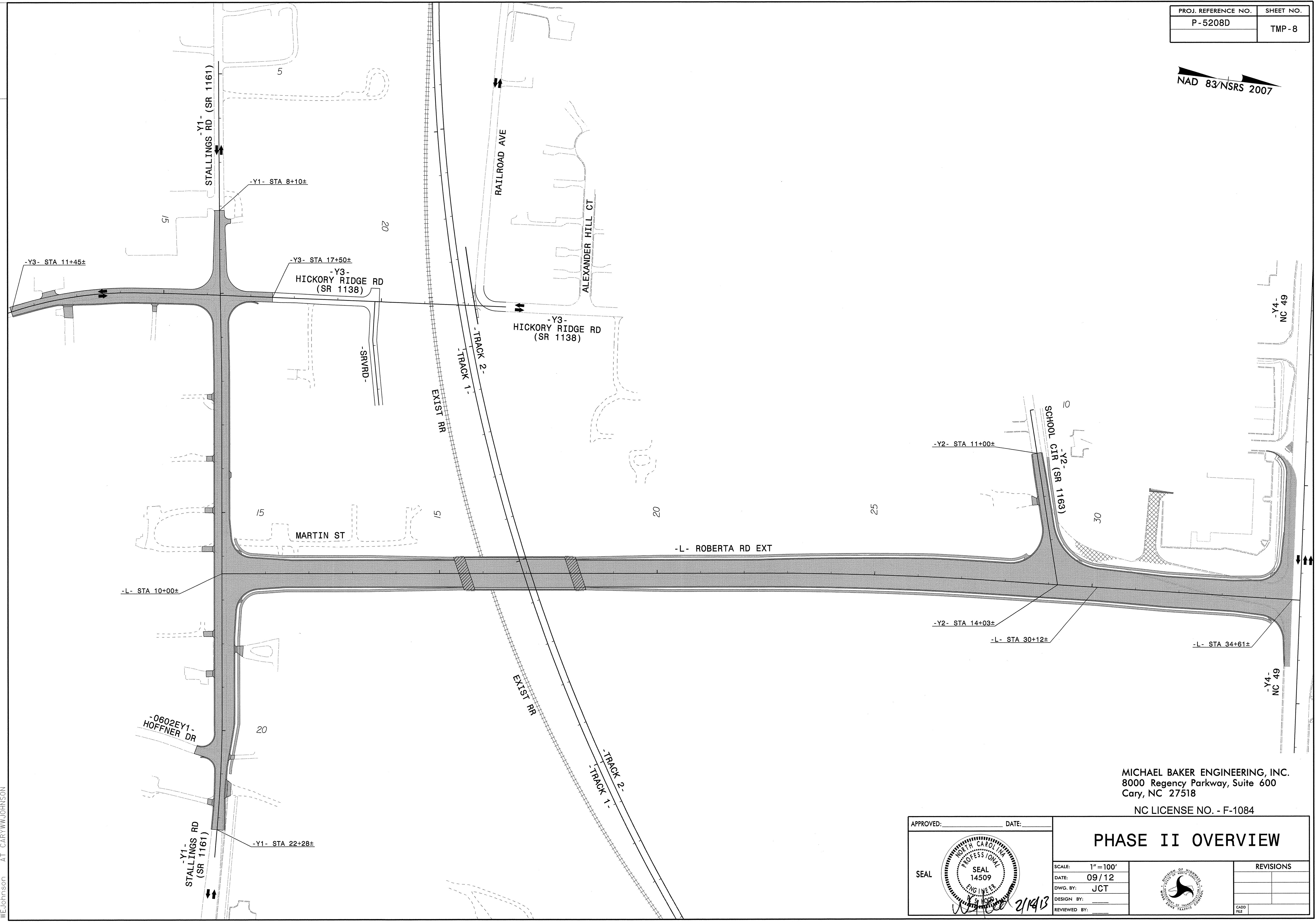
13-FEB-2013 17:04 Project: N:\DOT\TP-5208D\DISCIPLINE\TrafficControl\TP\5208D_top_phid\tpsh_07.dgn WEJ\JOHNSON AT CAR\JOHNSON

0077DEL_P10a4

PROJ. REFERENCE NO.	SHEET NO.
P - 5208D	TMP - 8



13-FEB-2013 17:04
 V:\Projects\5208D\DISCIPLINE\TrafficControl\5208D_tcp.philov.psh_08.dgn
 MELJOHNSON AT CARY\WUJOHNSON



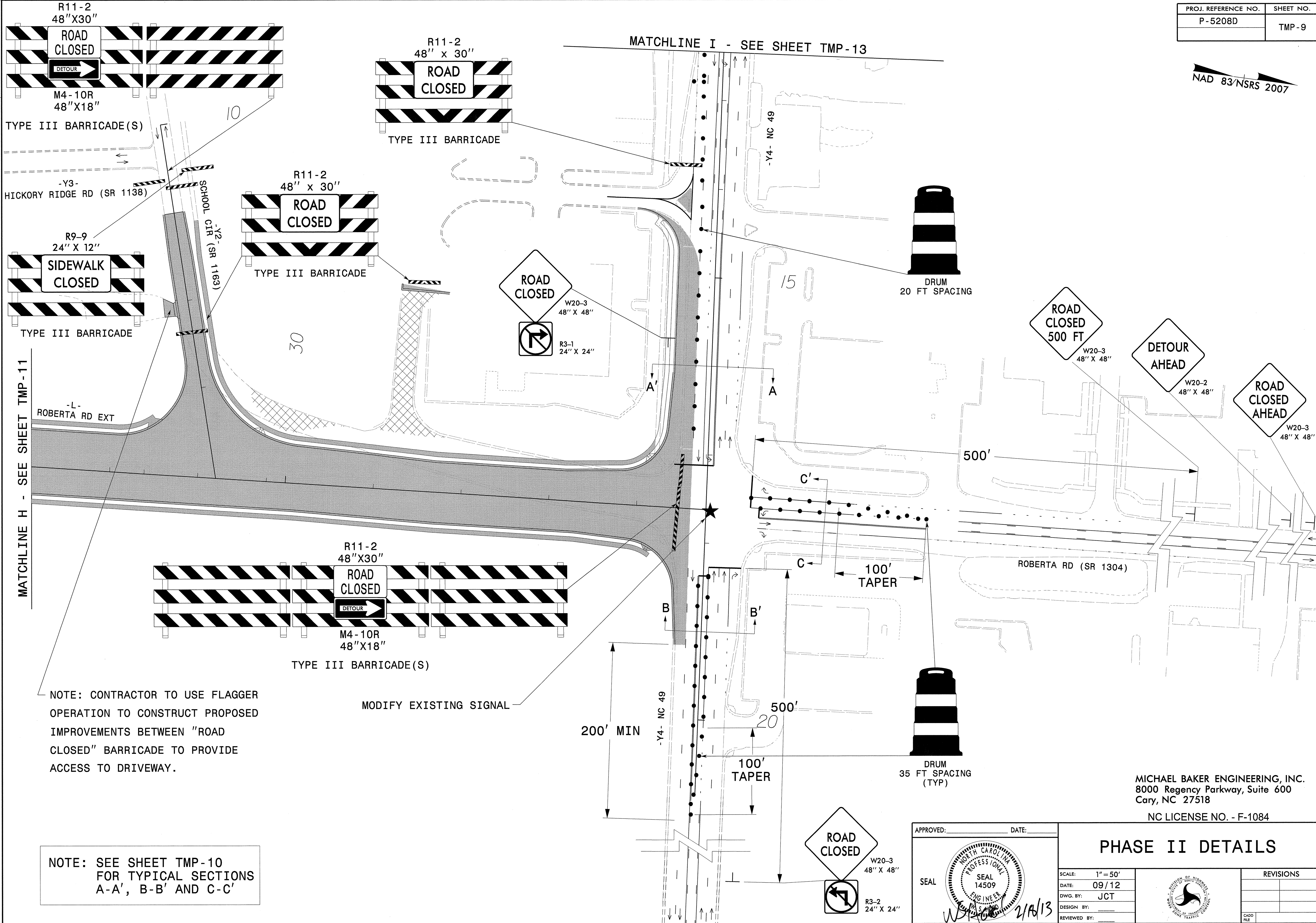
MICHAEL BAKER ENGINEERING, INC.
 8000 Regency Parkway, Suite 600
 Cary, NC 27518

NC LICENSE NO. - F-1084

APPROVED: _____	DATE: _____
<h3>PHASE II OVERVIEW</h3>	
SCALE: 1" = 100'	REVISIONS
DATE: 09/12	
DWG. BY: JCT	
DESIGN BY: _____	
REVIEWED BY: _____	

NAD 83/NSRS 2007

0077DEL_P10a4



NOTE: CONTRACTOR TO USE FLAGGER OPERATION TO CONSTRUCT PROPOSED IMPROVEMENTS BETWEEN "ROAD CLOSED" BARRICADE TO PROVIDE ACCESS TO DRIVEWAY.

NOTE: SEE SHEET TMP-10 FOR TYPICAL SECTIONS A-A', B-B' AND C-C'

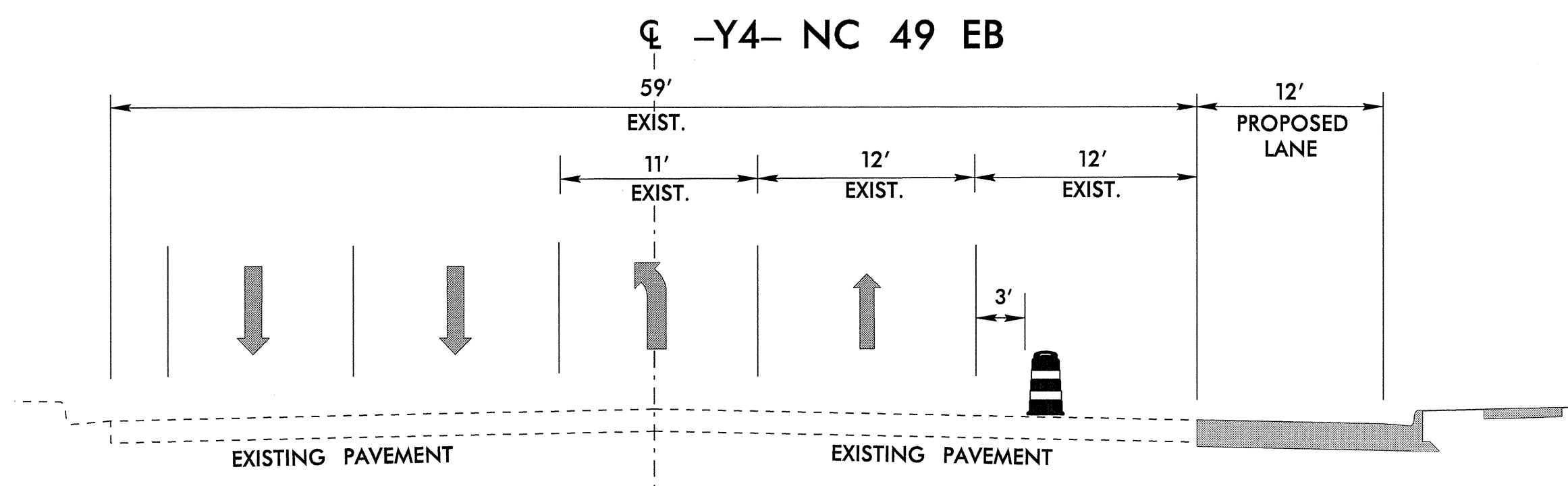
MICHAEL BAKER ENGINEERING, INC.
8000 Regency Parkway, Suite 600
Cary, NC 27518
NC LICENSE NO. - F-1084

PHASE II DETAILS

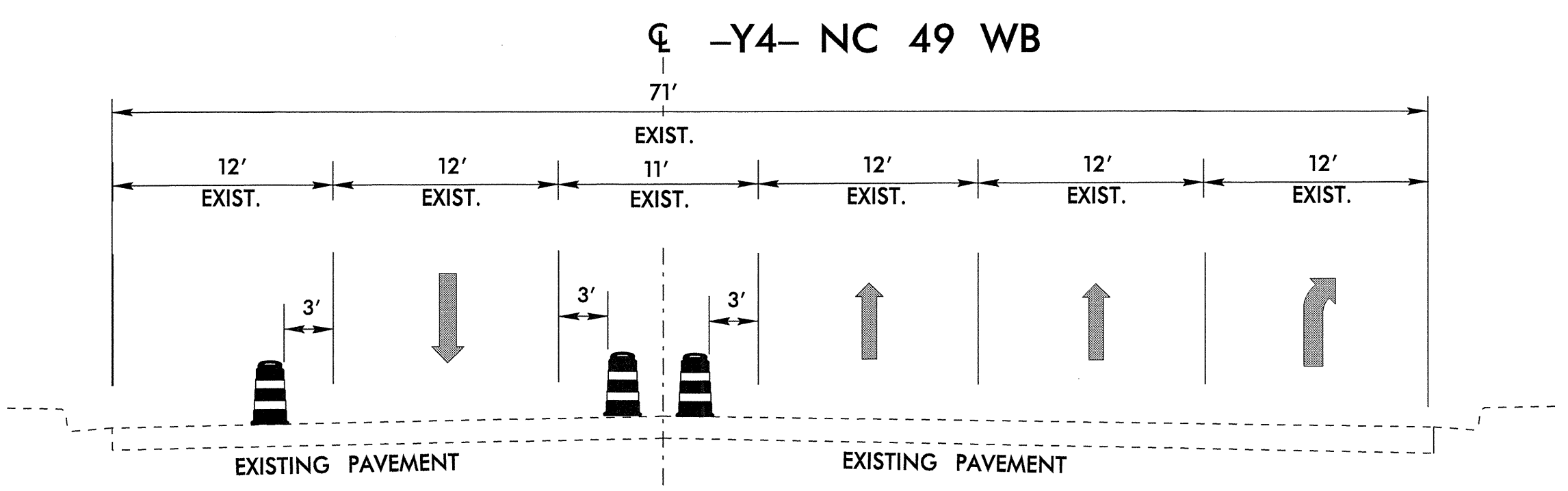
APPROVED: _____	DATE: _____

SCALE: 1" = 50'	REVISIONS
DATE: 09/12	
DWG. BY: JCT	
DESIGN BY:	
REVIEWED BY:	

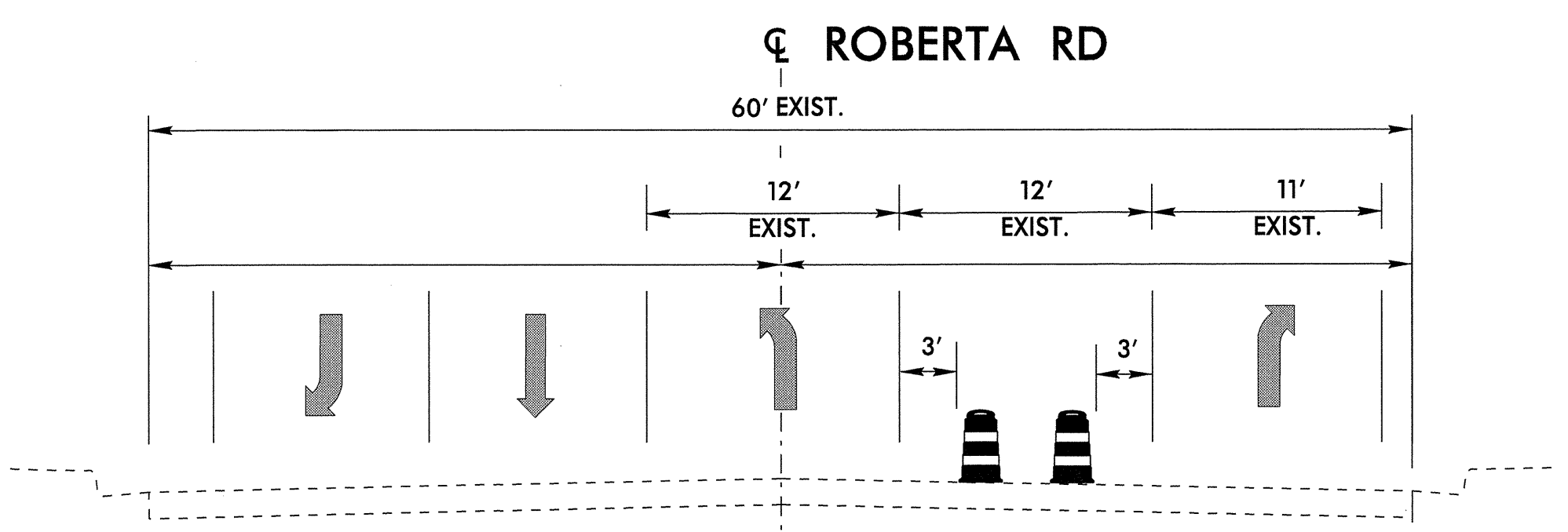
13-FEB-2013 7:04
 C:\projects\NCDOT\p-5208D\DISCIPLINE\TrafficControl\TCP\p5208D_tcp_phid\TpsH_09.dgn
 MICHAEL BAKER ENGINEERING, INC.



A-A' -Y4- Sta. 16+00



B-B' -Y4- Sta. 19+00



C-C' Roberta Road

13-FEB-2013 17:04
 V:\Projects\5208D\DISCIPLINE\Traffic\TrafficControl\TCP\5208D_tcp-ph1\DTpsh_10.dgn
 WEJOHNSON AT CARTI.WEJOHNSON

MICHAEL BAKER ENGINEERING, INC.
 8000 Regency Parkway, Suite 600
 Cary, NC 27518

NC LICENSE NO. - F-1084

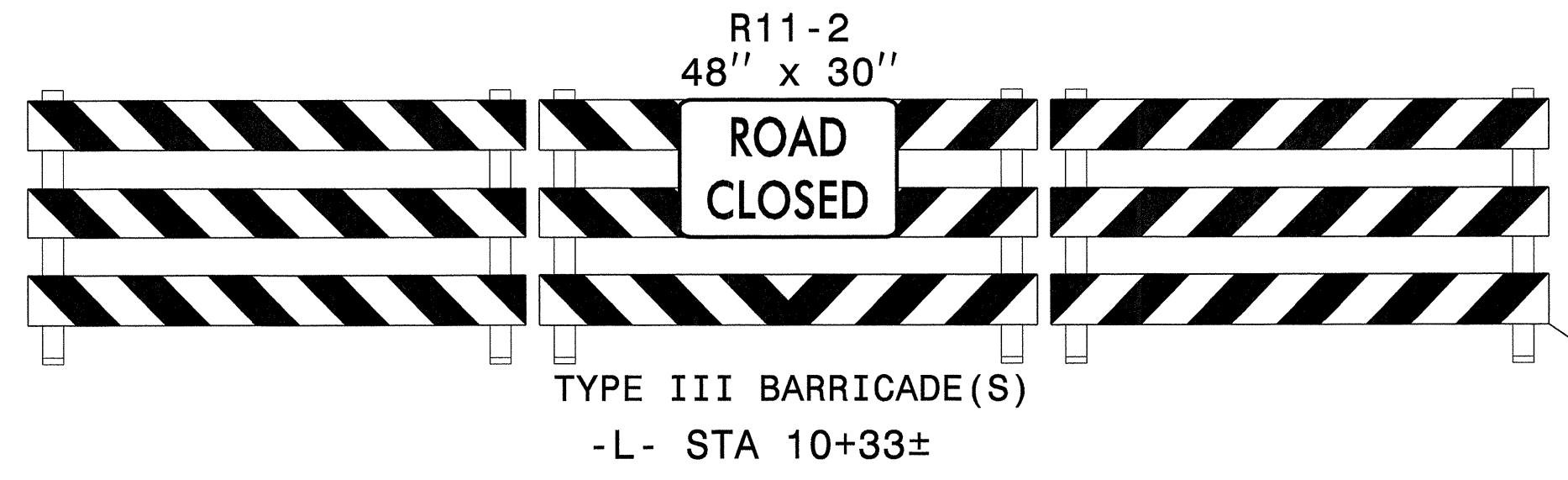
APPROVED: _____	DATE: _____	PHASE II DETAILS											
				SCALE: NONE	<table border="1"> <thead> <tr> <th colspan="2">REVISIONS</th> </tr> </thead> <tbody> <tr><td> </td><td> </td></tr> <tr><td> </td><td> </td></tr> <tr><td> </td><td> </td></tr> <tr><td> </td><td> </td></tr> </tbody> </table>	REVISIONS							
		REVISIONS											
		DATE: 09/12	<table border="1"> <tr><td> </td><td> </td></tr> <tr><td> </td><td> </td></tr> <tr><td> </td><td> </td></tr> <tr><td> </td><td> </td></tr> </table>										
		DWG. BY: JCT	<table border="1"> <tr><td> </td><td> </td></tr> <tr><td> </td><td> </td></tr> <tr><td> </td><td> </td></tr> <tr><td> </td><td> </td></tr> </table>										
		DESIGN BY: _____	<table border="1"> <tr><td> </td><td> </td></tr> <tr><td> </td><td> </td></tr> <tr><td> </td><td> </td></tr> <tr><td> </td><td> </td></tr> </table>										
		REVIEWED BY: _____	<table border="1"> <tr><td> </td><td> </td></tr> <tr><td> </td><td> </td></tr> <tr><td> </td><td> </td></tr> <tr><td> </td><td> </td></tr> </table>										

PROJ. REFERENCE NO.	SHEET NO.
P-5208D	TMP-11

NAD 83/NSRS 2007

0077DEL_P10a4

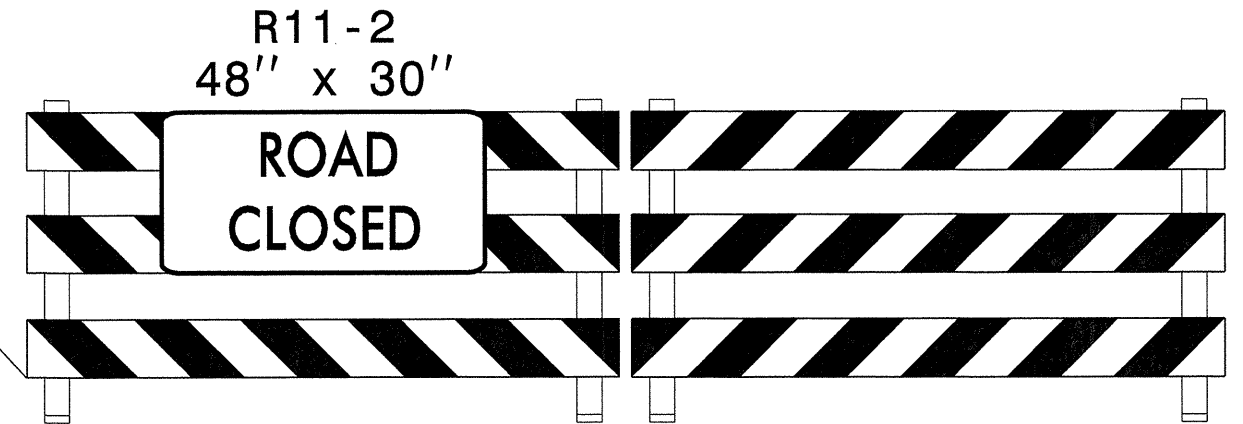
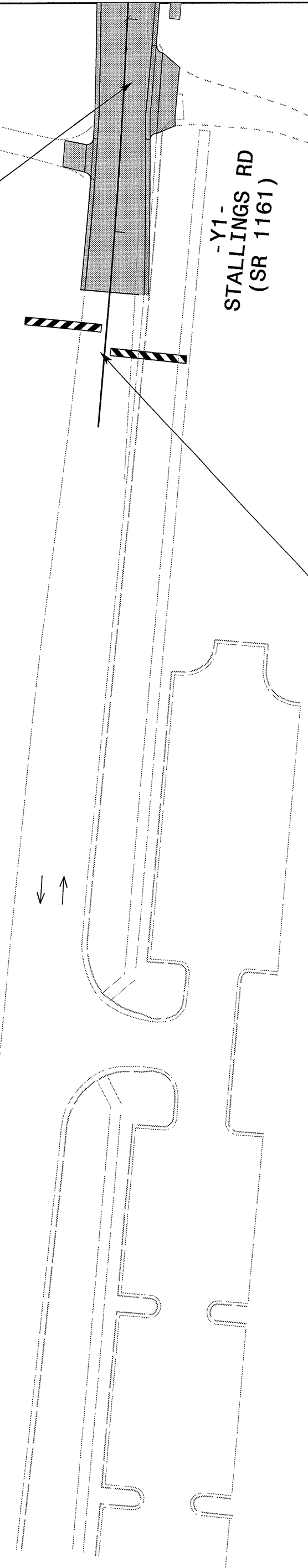
MATCHLINE K - SEE SHEET TMP-12



TYPE III BARRICADE(S)
-L- STA 10+33±

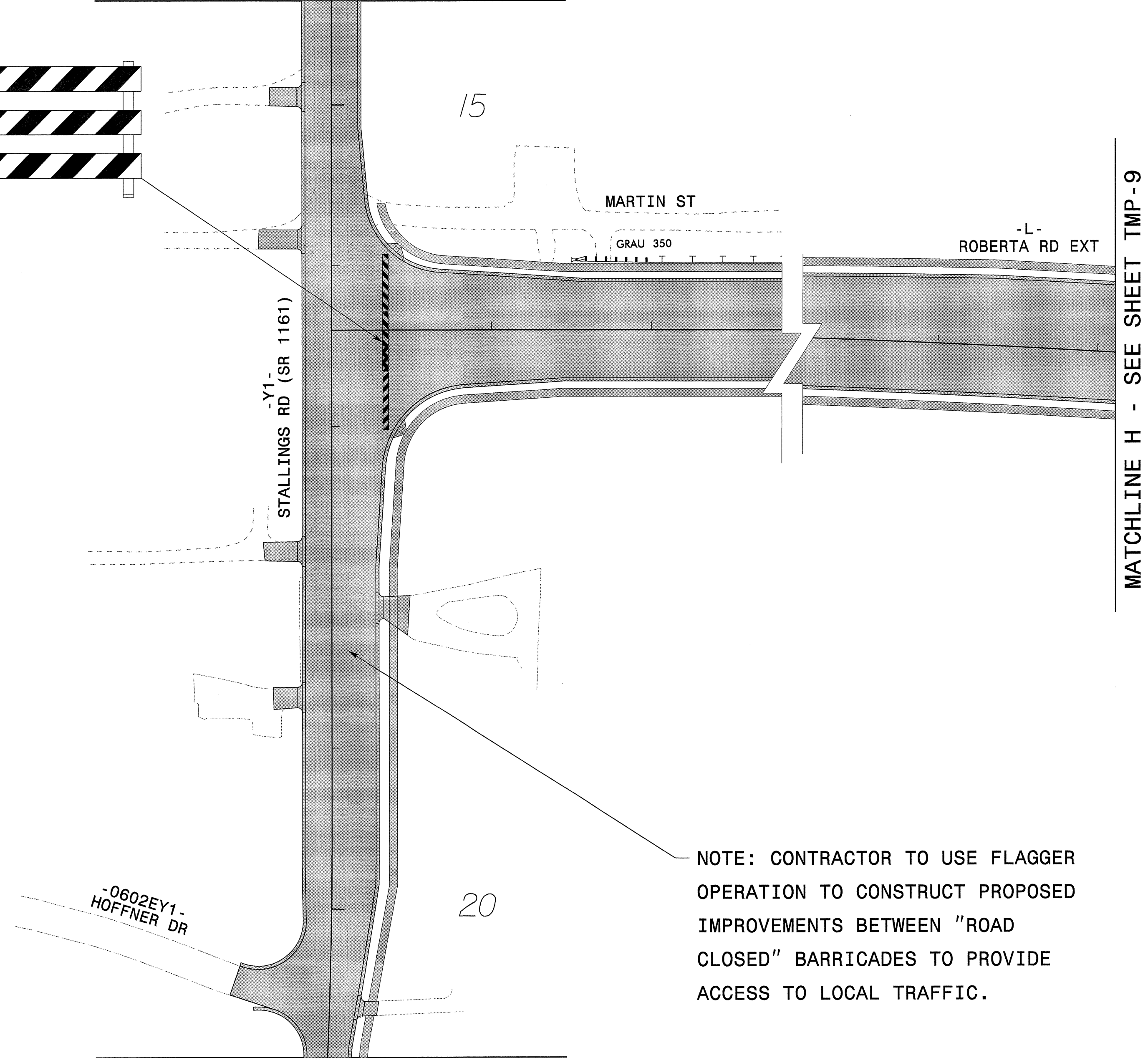
MATCHLINE J - SEE THIS SHEET

NOTE: CONTRACTOR TO USE FLAGGER OPERATION TO CONSTRUCT PROPOSED IMPROVEMENTS BETWEEN "ROAD CLOSED" BARRICADES TO PROVIDE ACCESS TO LOCAL TRAFFIC.



TYPE III BARRICADE(S)
-Y1- STA 22+28±

MATCHLINE J - SEE THIS SHEET



NOTE: CONTRACTOR TO USE FLAGGER OPERATION TO CONSTRUCT PROPOSED IMPROVEMENTS BETWEEN "ROAD CLOSED" BARRICADES TO PROVIDE ACCESS TO LOCAL TRAFFIC.

I:\FEB-2013\IT04\Projects\NCDOT\TP-5208D\DISCIPLINE\Traffic\TrafficControl\TCP\5208D_tcp_phidTps_h_ll.dgn
 WEJ@JOHNSON AT CAR/WJOHNSON

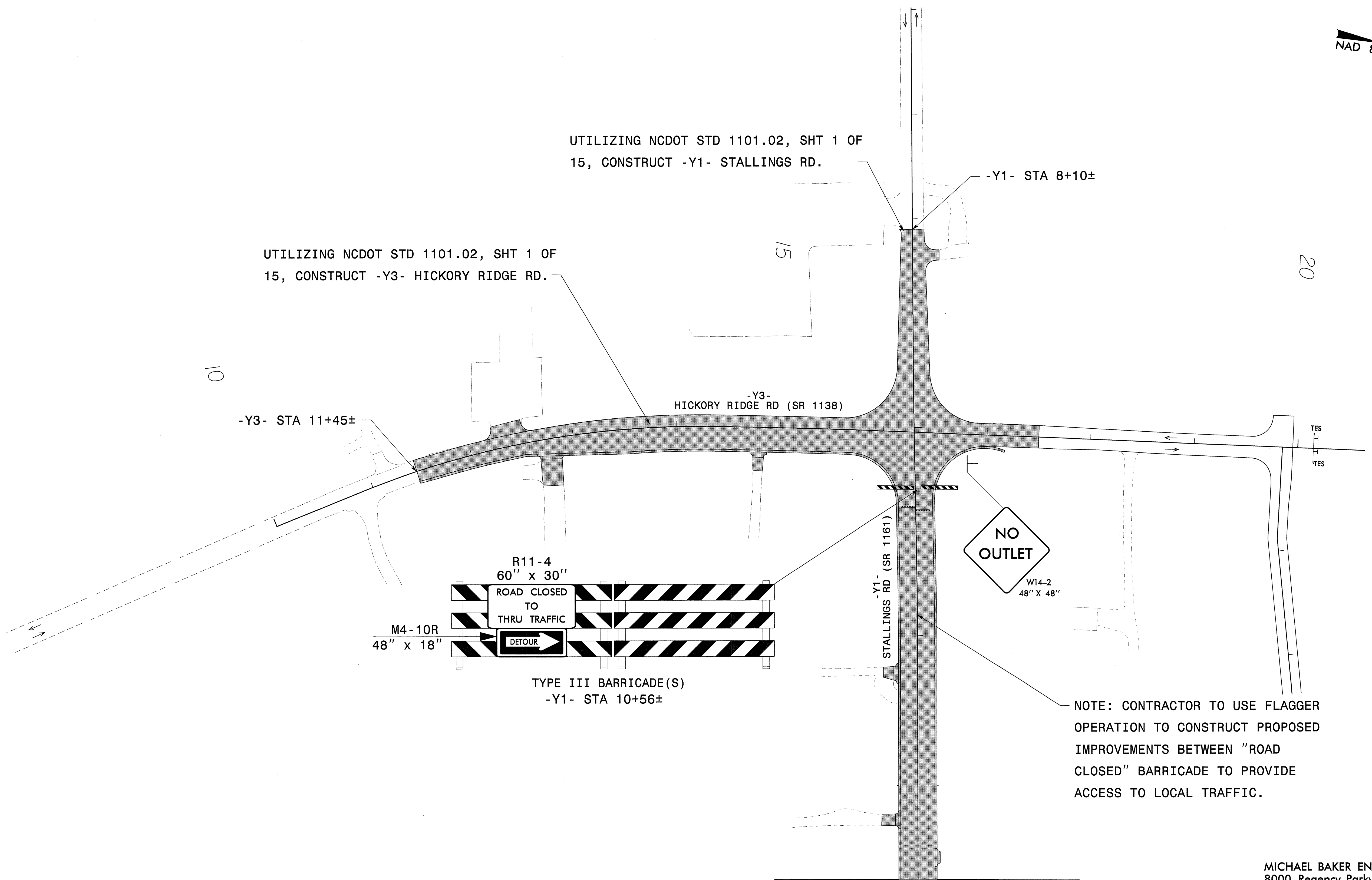
MICHAEL BAKER ENGINEERING, INC.
8000 Regency Parkway, Suite 600
Cary, NC 27518
NC LICENSE NO. - F-1084

APPROVED: _____ DATE: _____	PHASE II DETAILS		REVISIONS		
			SCALE: 1" = 50'		
	DATE: 09/12	CADD FILE			
	DWG. BY: JCT	REVIEWED BY: _____			



UTILIZING NCDOT STD 1101.02, SHT 1 OF 15, CONSTRUCT -Y1- STALLINGS RD.

UTILIZING NCDOT STD 1101.02, SHT 1 OF 15, CONSTRUCT -Y3- HICKORY RIDGE RD.



NOTE: CONTRACTOR TO USE FLAGGER OPERATION TO CONSTRUCT PROPOSED IMPROVEMENTS BETWEEN "ROAD CLOSED" BARRICADE TO PROVIDE ACCESS TO LOCAL TRAFFIC.

MATCHLINE K - SEE SHEET TMP-11

MICHAEL BAKER ENGINEERING, INC.
8000 Regency Parkway, Suite 600
Cary, NC 27518

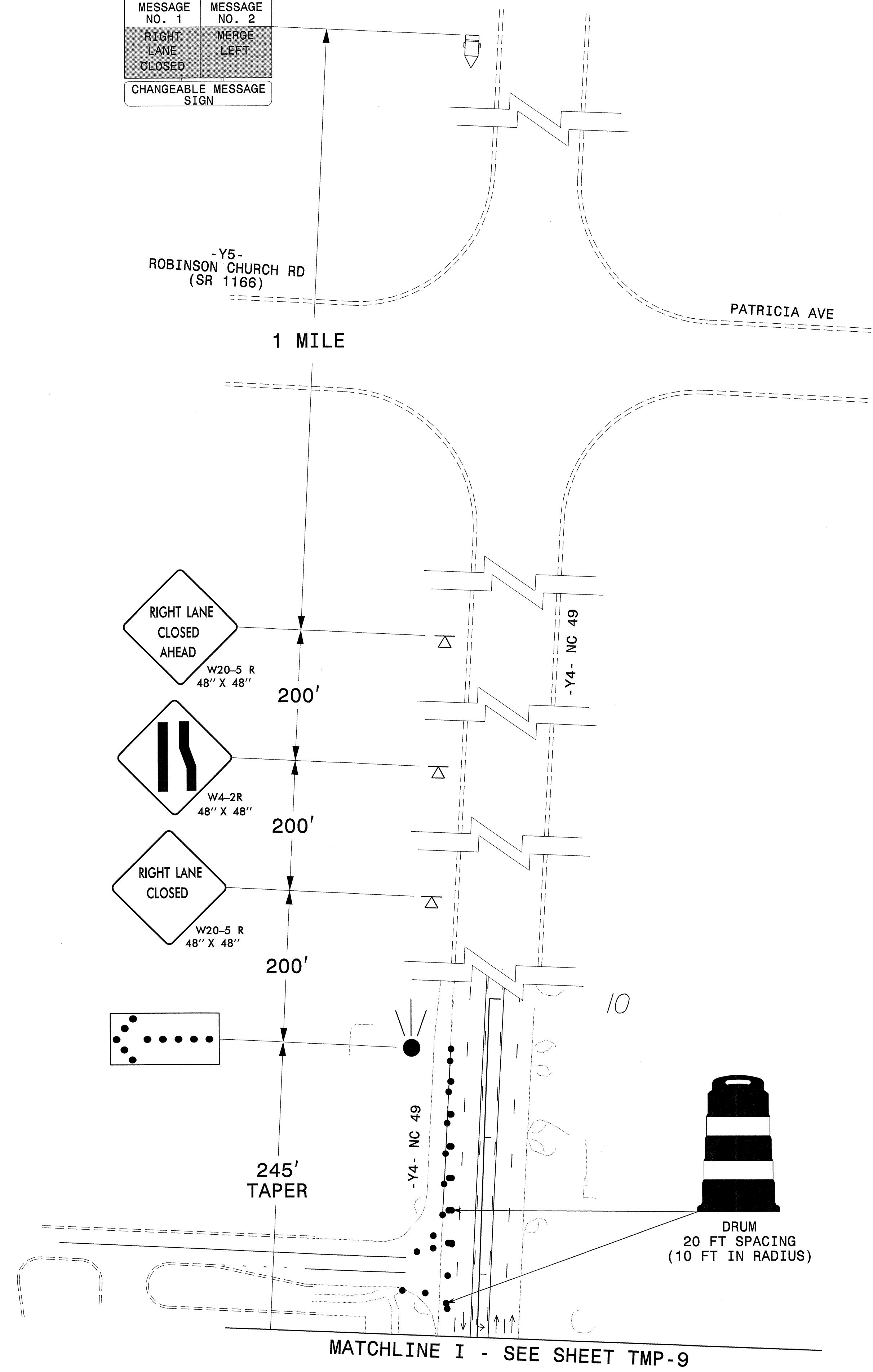
NC LICENSE NO. - F-1084

APPROVED: _____	DATE: _____	PHASE II DETAILS	
SCALE: 1" = 50'	DATE: 09/12		REVISIONS
DWG. BY: JCT	DESIGN BY: _____		
REVIEWED BY: _____			

13-FEB-2013 17:04
 W:\Projects\NCDOT\5208D\DISCIPLINE\Traffic\TrafficControl\TCP\F5208D_tcp_ph11DTPsh_12.dgn
 MJohnson AT CARTERJOHNSON



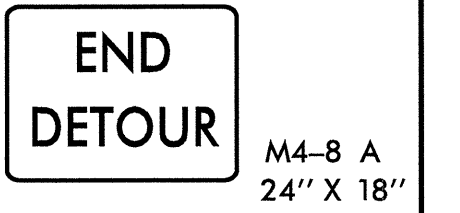
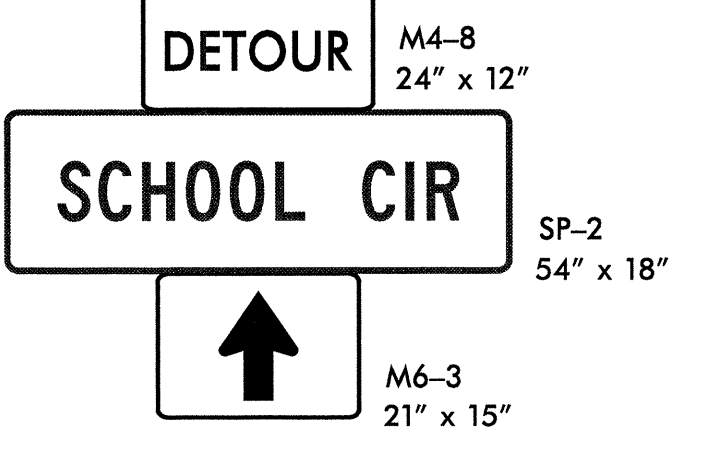
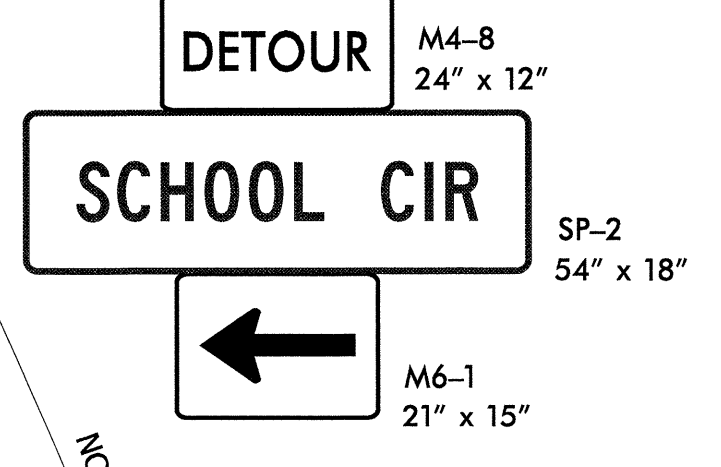
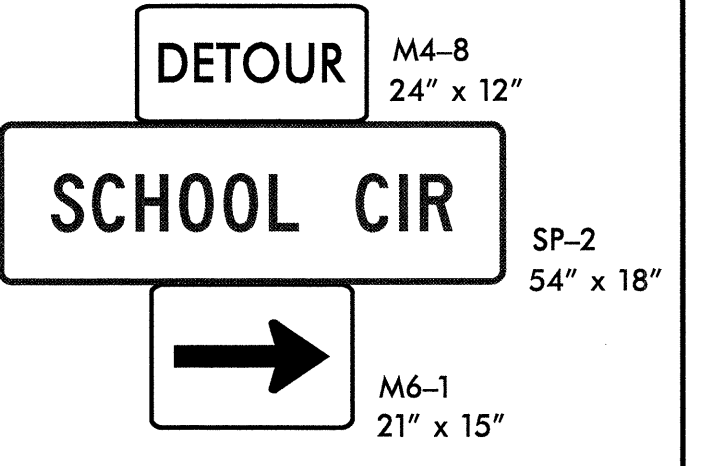
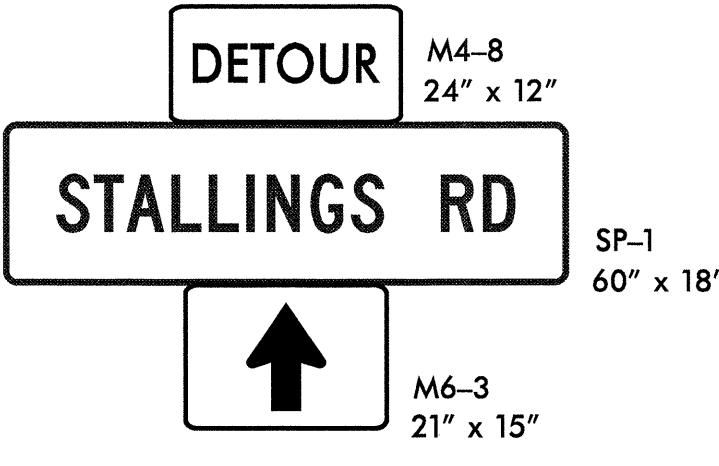
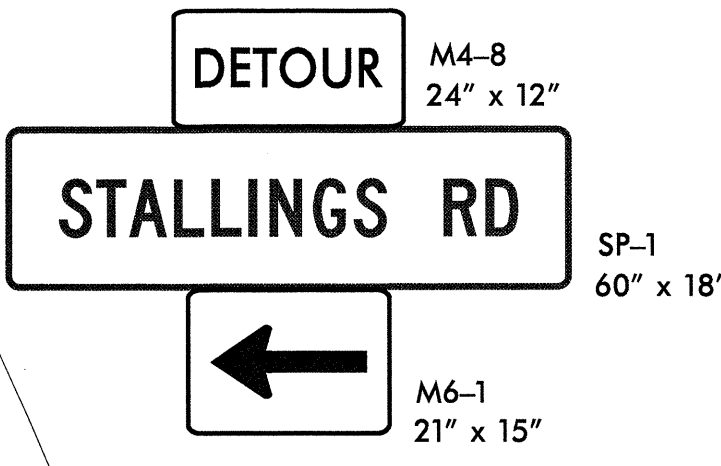
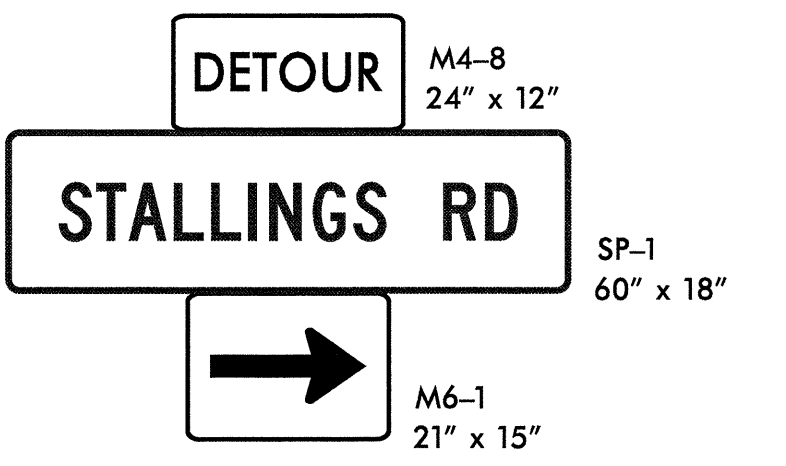
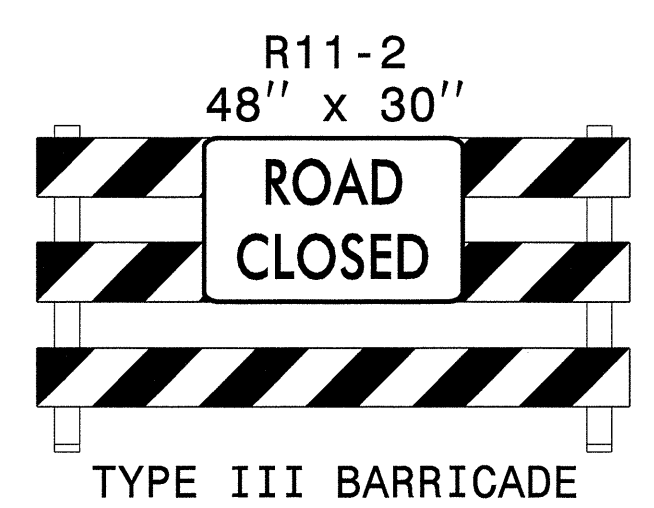
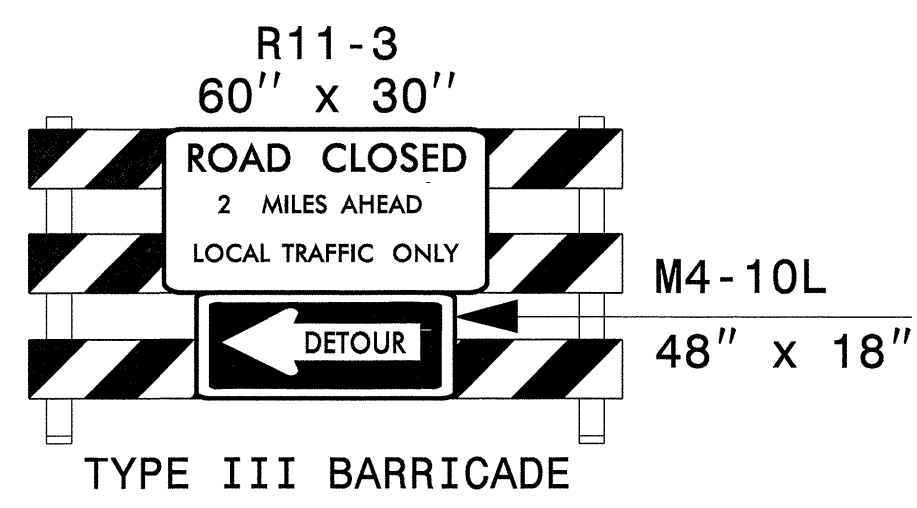
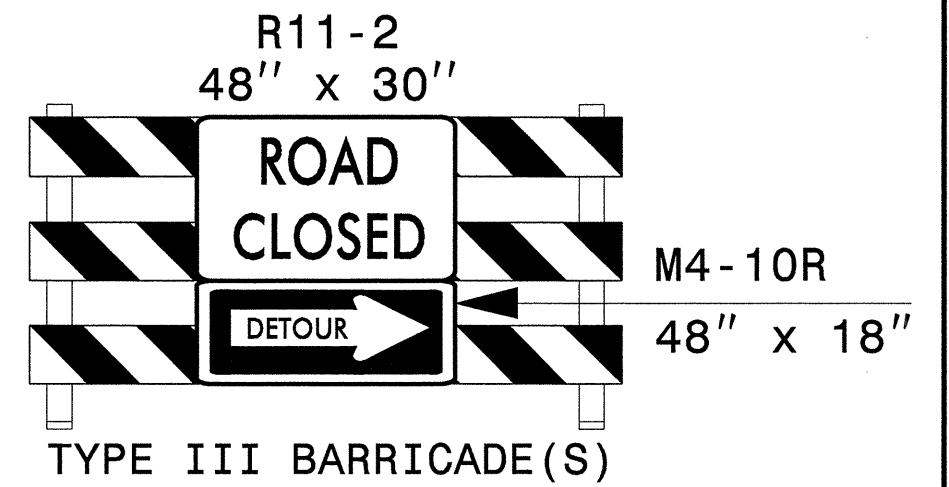
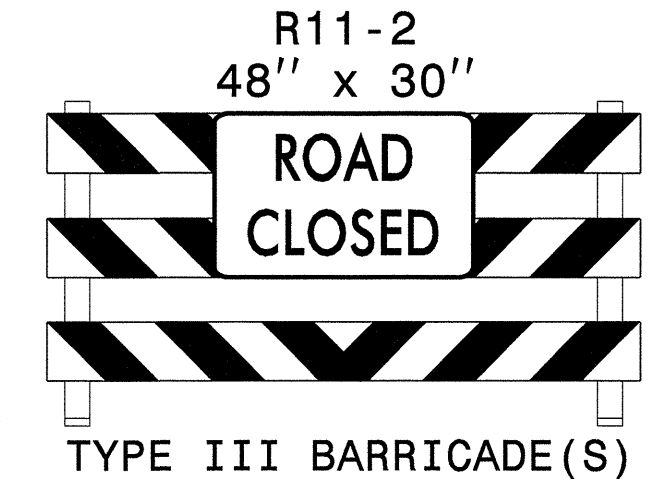
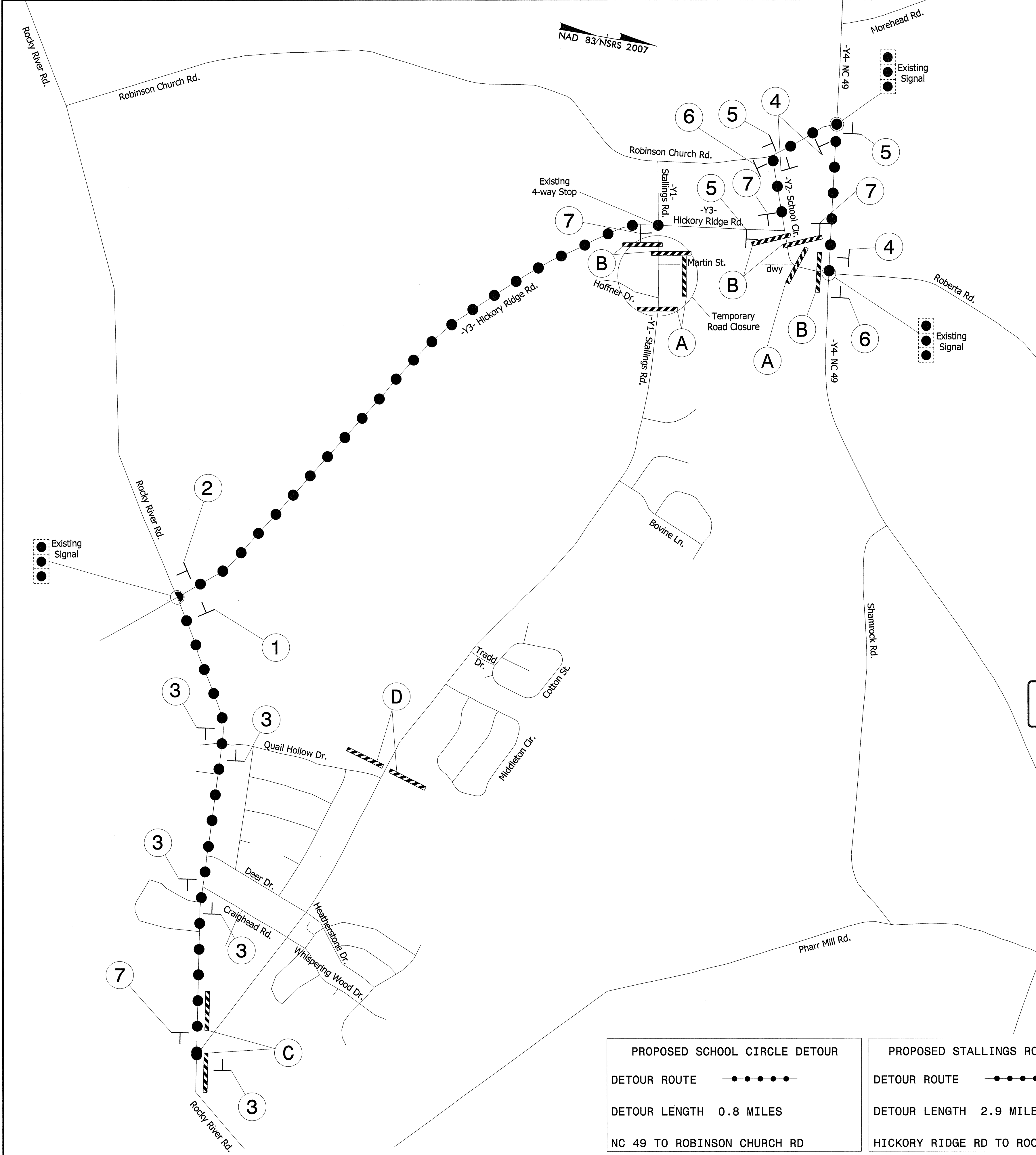
MESSAGE NO. 1	MESSAGE NO. 2
RIGHT LANE CLOSED	MERGE LEFT
CHANGEABLE MESSAGE SIGN	



13-FEB-2013 17:04
 Y:\Projects\NC DOT\5208D\DISCIPLINE\Traffic\TrafficControl\TCP\5208D_top.phid\Tps\13.dgn
 WE Johnson AT CARY\WWW.JOHNSON

MICHAEL BAKER ENGINEERING, INC.
 8000 Regency Parkway, Suite 600
 Cary, NC 27518
 NC LICENSE NO. - F-1084

APPROVED: _____	DATE: _____	PHASE II DETAILS									
SCALE: 1" = 50'	DATE: 09/12	<table border="1"> <thead> <tr> <th colspan="2">REVISIONS</th> </tr> </thead> <tbody> <tr> <td> </td> <td> </td> </tr> <tr> <td> </td> <td> </td> </tr> <tr> <td> </td> <td> </td> </tr> </tbody> </table>		REVISIONS							
REVISIONS											
DWG. BY: JCT	DESIGN BY: _____										
REVIEWED BY: _____	DATE: 2/18/13	<table border="1"> <tr> <td>CADD FILE</td> <td> </td> </tr> </table>		CADD FILE							
CADD FILE											



PROPOSED SCHOOL CIRCLE DETOUR
 DETOUR ROUTE —●—●—●—●—
 DETOUR LENGTH 0.8 MILES
 NC 49 TO ROBINSON CHURCH RD

PROPOSED STALLINGS ROAD DETOUR
 DETOUR ROUTE —●—●—●—●—
 DETOUR LENGTH 2.9 MILES
 HICKORY RIDGE RD TO ROCKY RIVER RD

APPROVED: _____ DATE: _____

 SEAL

DETOUR - STALLINGS ROAD AND SCHOOL CIRCLE

SCALE: NONE		REVISIONS
DATE: 09/12		
DWG. BY: CAA		
DESIGN BY:		
REVIEWED BY:		CARD FILE

6 MICHAEL BAKER ENGINEERING, INC.
 8000 Regency Parkway, Suite 600
 Cary, NC 27518
 NC LICENSE NO. - F-1084

13-FEB-2013 17:04
 W:\Projects\5208D\DISCIPLINE\Traffic\TrafficControl\TCP\5208D_tcp_detour_psh.dgn
 WEJ\johnson AT CAR\WJOHNSON

SIGN DESIGN FOR SCHOOL CIRCLE

<p>SIGN NUMBER: SP-2 TYPE: STATIONARY QUANTITY: SEE PLANS</p> <p>SIGN WIDTH: 54" HEIGHT: 18" TOTAL AREA: 6.8 Sq.Ft.</p> <p>BORDER TYPE: FLUSH RECESS: 0.38" WIDTH: 0.63" RADII: 1.5"</p>	<p>BACKG COLOR: Orange COPY COLOR: Black</p> <p>DESIGN BY: J FARINO PROJECT ID: P-5208D</p> <p>CHECKED BY: DIV: 10</p> <p>DATE: Dec 19, 2011</p>																																																																														
<p style="text-align: center;">USE NOTES</p> <p>1. Legend and border shall be direct applied black non-reflective sheeting 2. Background shall be type VII, VIII, or IX (pismatic) fluorescent orange reflective sheeting.</p>	<div style="text-align: center;"> </div> <p>BORDER R=1.5" TH=0.63" IN=0.38"</p> <p style="text-align: right;">Spacing Factor is 1 unless specified otherwise</p>																																																																														
<p style="text-align: center;">LETTER POSITIONS</p> <table border="1" style="width: 100%; border-collapse: collapse; text-align: center;"> <thead> <tr> <th colspan="12">Letter spacings are to start of next letter</th> <th>Series/Size Text Length</th> </tr> </thead> <tbody> <tr> <td>S</td><td>C</td><td>H</td><td>O</td><td>O</td><td>L</td><td></td><td>C</td><td>I</td><td>R</td><td></td><td></td> <td>C 2000</td> </tr> <tr> <td>6</td><td>4</td><td>4</td><td>4</td><td>4</td><td>3</td><td>6</td><td>4</td><td>2</td><td>3</td><td>6</td><td></td> <td>38.0</td> </tr> <tr><td> </td><td> </td><td> </td><td> </td><td> </td><td> </td><td> </td><td> </td><td> </td><td> </td><td> </td><td> </td><td> </td></tr> <tr><td> </td><td> </td><td> </td><td> </td><td> </td><td> </td><td> </td><td> </td><td> </td><td> </td><td> </td><td> </td><td> </td></tr> <tr><td> </td><td> </td><td> </td><td> </td><td> </td><td> </td><td> </td><td> </td><td> </td><td> </td><td> </td><td> </td><td> </td></tr> </tbody> </table> <p>FILENAME: Roberta Rd Sign Designs MICHAEL BAKER ENGINEERING SIGN DETAIL</p>		Letter spacings are to start of next letter												Series/Size Text Length	S	C	H	O	O	L		C	I	R			C 2000	6	4	4	4	4	3	6	4	2	3	6		38.0																																							
Letter spacings are to start of next letter												Series/Size Text Length																																																																			
S	C	H	O	O	L		C	I	R			C 2000																																																																			
6	4	4	4	4	3	6	4	2	3	6		38.0																																																																			

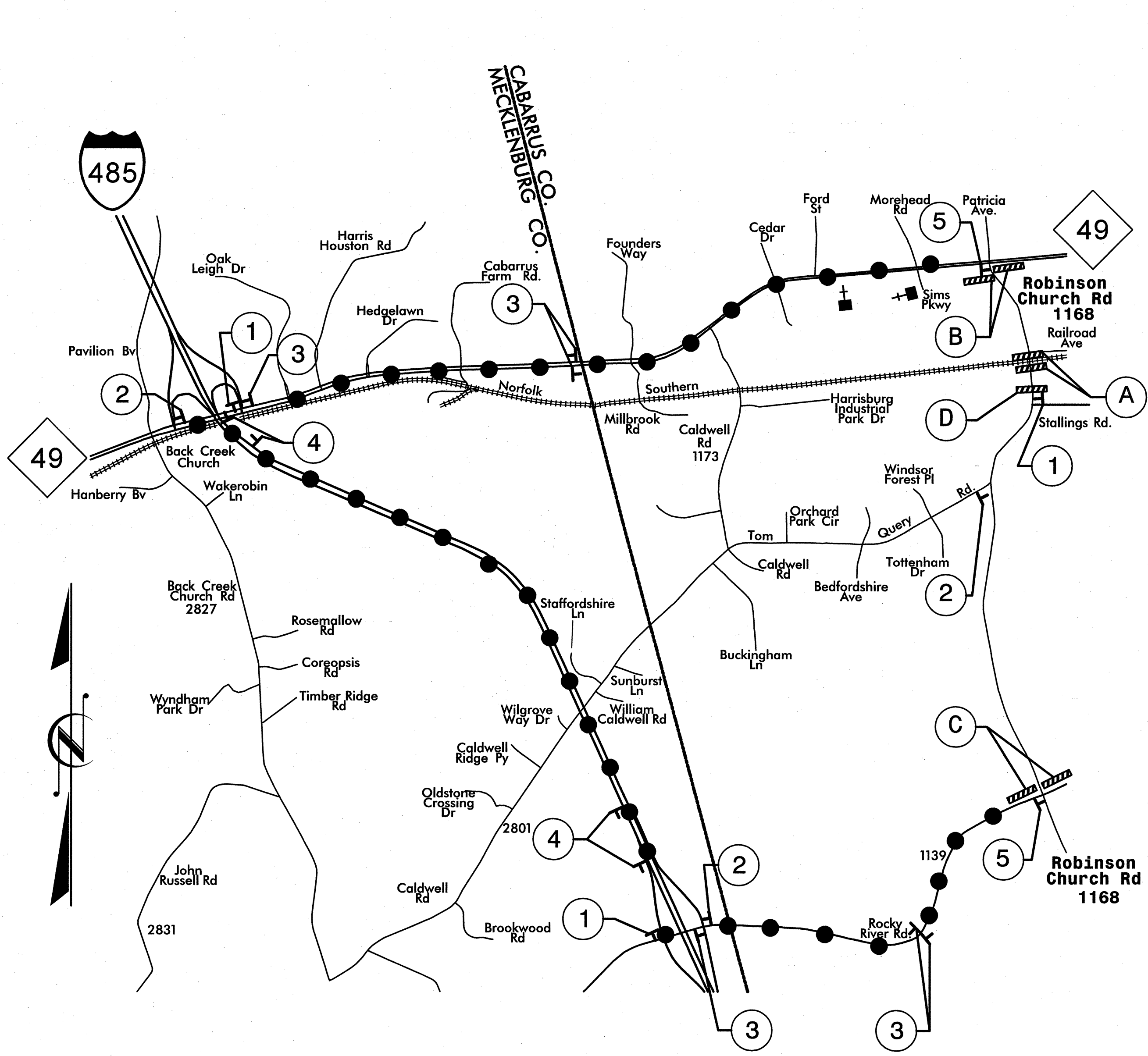
13-FEB-2013 17:04
W:\Projects\WCD01\5208D\DISCIPLINE\Traffic\TrafficControl\TCP\5208D_top_detour_psh_15.dgn
W:\JOHNSON AT CARY\W\JOHNSON

MICHAEL BAKER ENGINEERING, INC.
8000 Regency Parkway, Suite 600
Cary, NC 27518

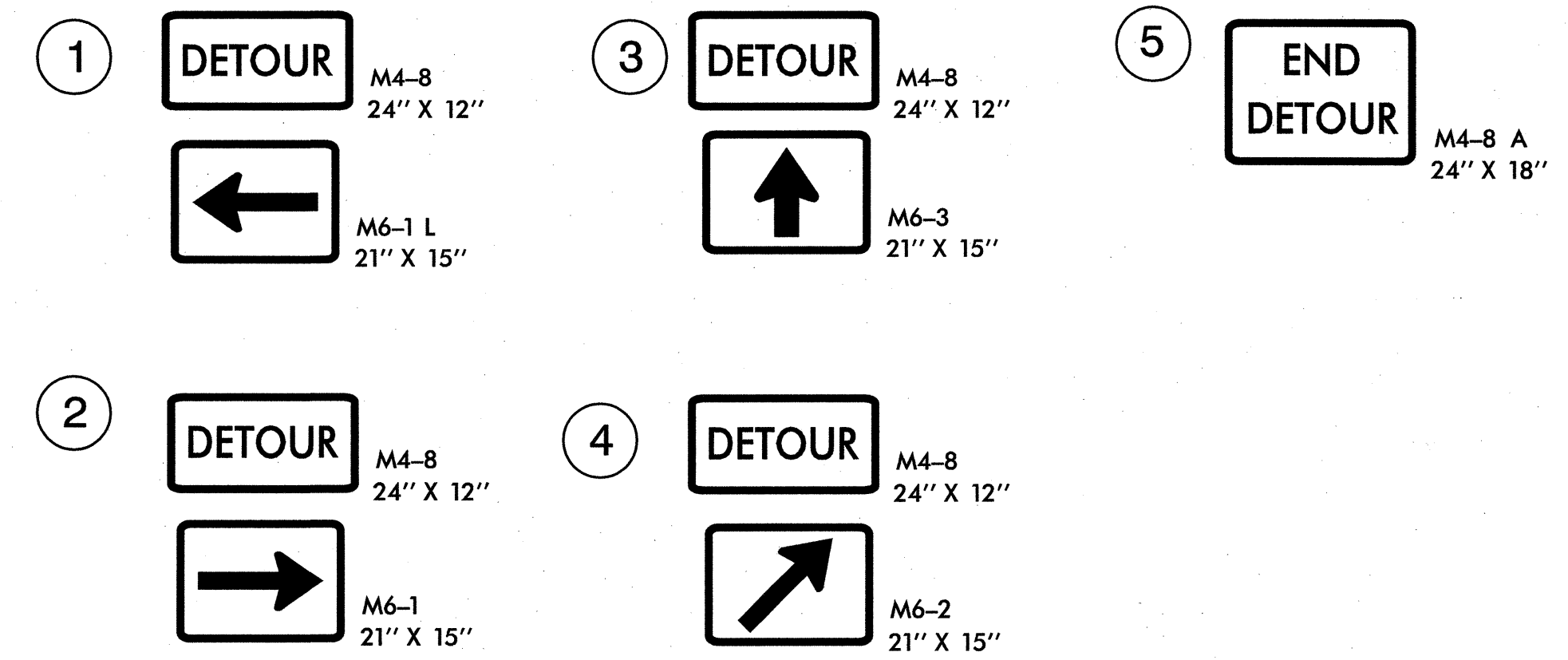
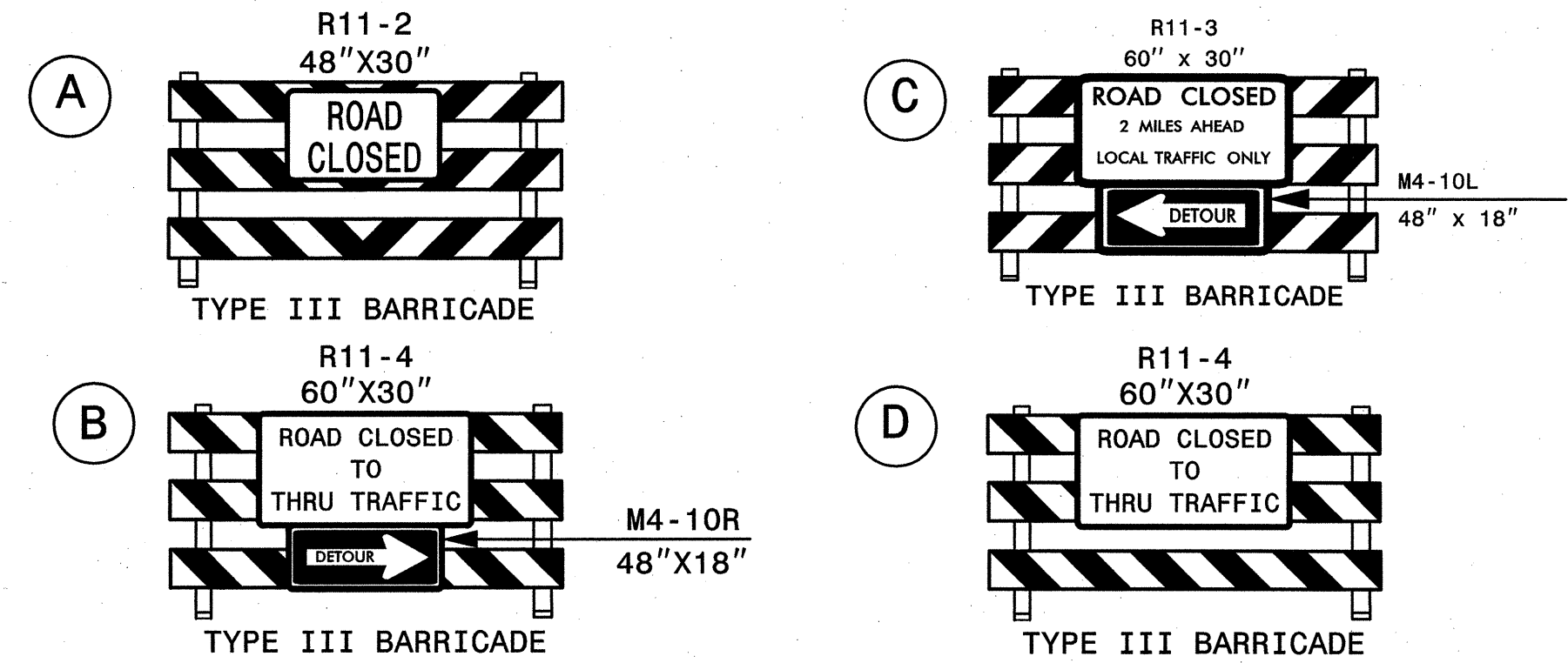
NC LICENSE NO. - F-1084

APPROVED: _____	DATE: _____	SCHOOL CIRCLE OFFSITE DETOUR SIGN DESIGN						
	SCALE: NONE							
	DATE: 09/12							
	DWG. BY: JCT							
	DESIGN BY:							
REVIEWED BY:		<table border="1" style="width: 100%; border-collapse: collapse;"> <tr> <th colspan="2">REVISIONS</th> </tr> <tr> <td> </td> <td> </td> </tr> <tr> <td> </td> <td> </td> </tr> </table>	REVISIONS					
REVISIONS								

0077DEL-P10a4

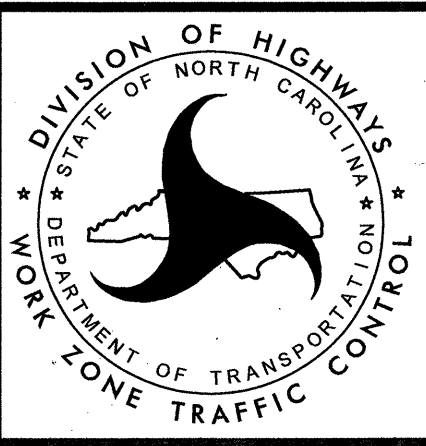


PROPOSED DETOUR
 DETOUR ROUTE ●—●—●—●
 DETOUR LENGTH 7.7 MILES



SUPPLEMENT WITH RSD 1101.03
 (SHEET 1 OF 9) ON STALLINGS ROAD
 AND TOM QUERY ROAD

APPROVED: *[Signature]* DATE: 2/11/13
 SEAL
 NORTH CAROLINA PROFESSIONAL ENGINEER
 PRONDA B. EARLY
 023521



TRANSPORTATION
 MANAGEMENT PLAN
 DETOUR SIGNING

HNTB HNTB NORTH CAROLINA, P.C.
 343 E. Six Forks Road, Suite 200
 Raleigh, North Carolina 27609
 NC License No. G-1554

11:0:59 AM
 I:\CP\5208\TC\CP-detour.dgn
 \$\$\$USERNAME\$\$\$