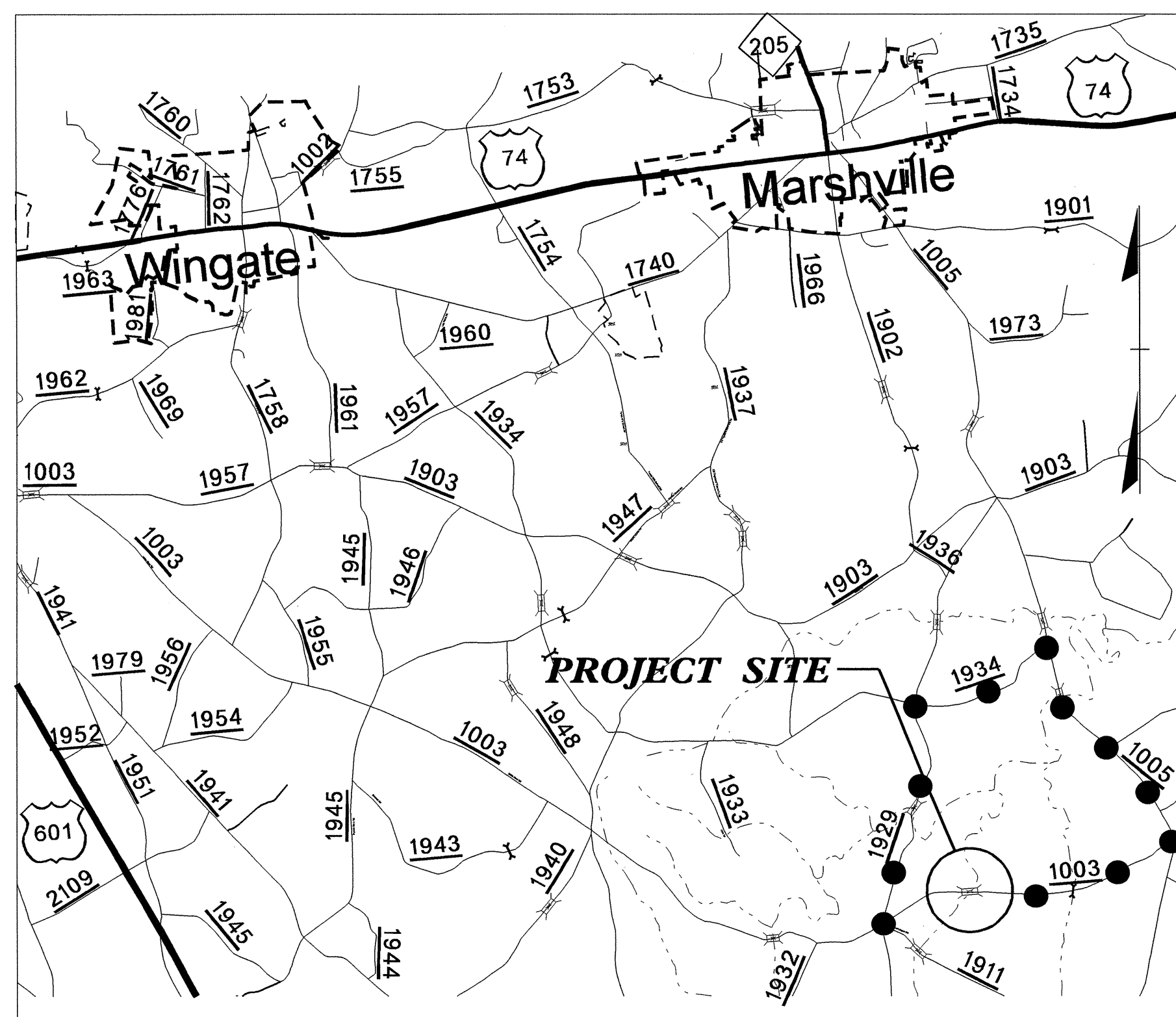


09/08/99

See Sheet 1-A For Index of Sheets  
See Sheet 1-B For Conventional symbols  
See Sheet 1-C For Survey Control

T.I.P. NO.	SHEET NO.
B-4824	UO-1

**TIP PROJECT: B-4824**



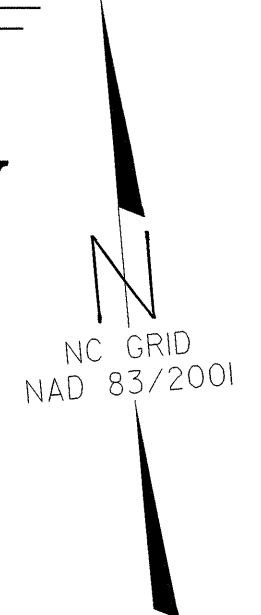
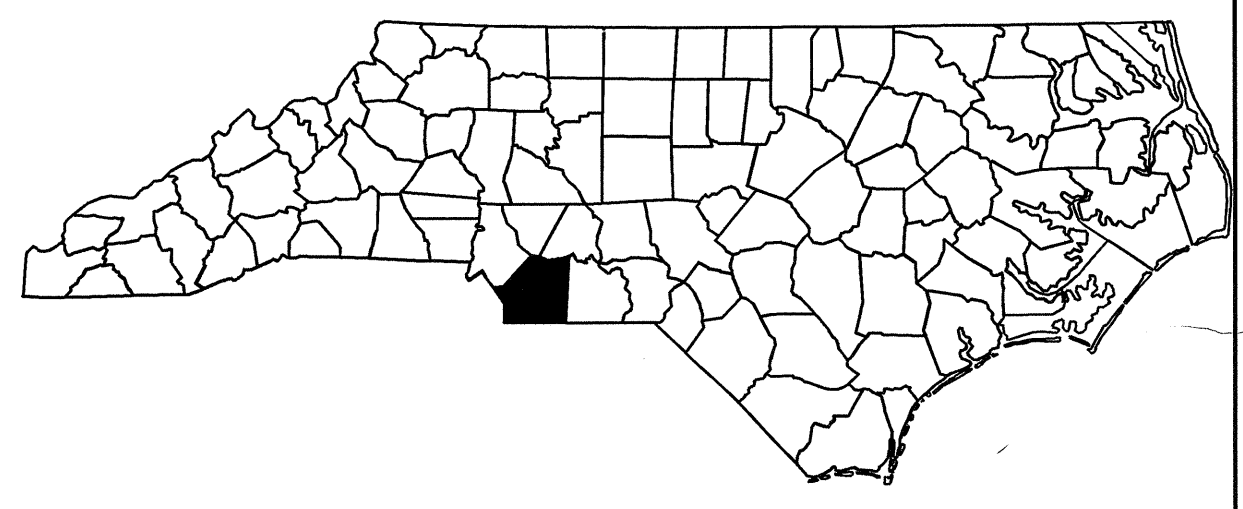
**VICINITY MAP**

**OFF-SITE DETOUR** ●—●—●—●—●

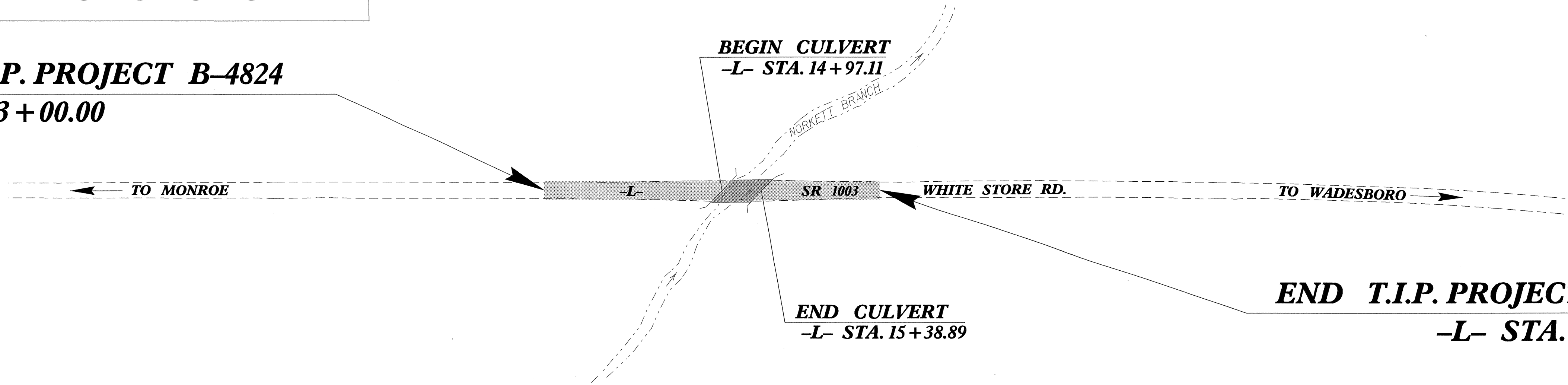
STATE OF NORTH CAROLINA  
DIVISION OF HIGHWAYS

**UTILITIES BY OTHERS PLANS  
UNION COUNTY**

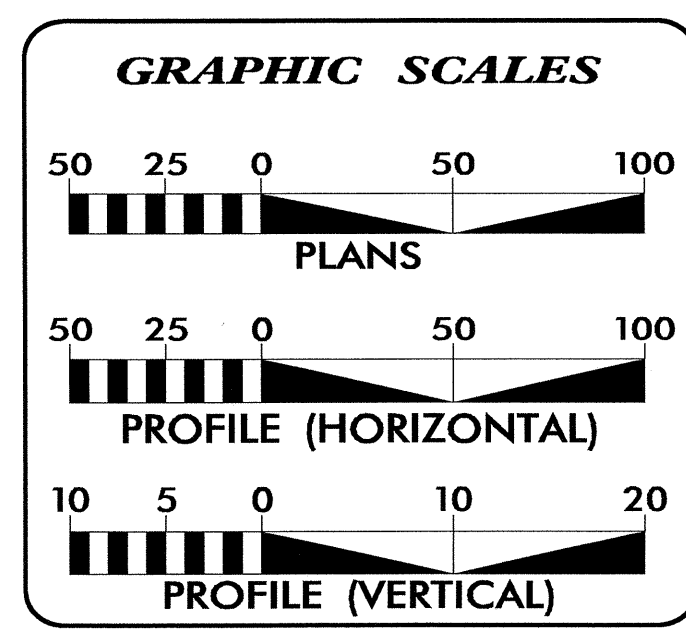
**LOCATION: BRIDGE No. 453 ON SR 1003 (WHITE STORE RD.) OVER NORKETT BRANCH**  
**TYPE OF WORK: ELECTRIC POWER AND TELEPHONE**



**BEGIN T.I.P. PROJECT B-4824**  
**-L- STA. 13+00.00**



**END T.I.P. PROJECT B-4824**  
**-L- STA. 17+50.00**



**INDEX OF SHEETS**

SHEET NO.	DESCRIPTION
UO-1	TITLE SHEET
UO-2	UTILITIES BY OTHERS PLAN SHEET

**UTILITY OWNERS ON PROJECT**

(1) Electric Power - Pee Dee EMC  
(2) Telephone - Windstream Communications

PREPARED IN THE OFFICE OF:  
**DIVISION OF HIGHWAYS**  
**UTILITIES UNIT**  
**UTILITIES ENGINEERING**

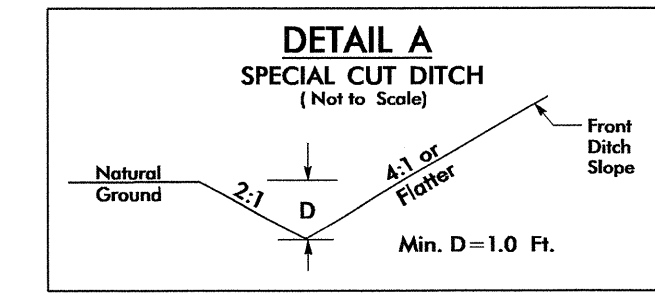
1591 MAIL SERVICES CENTER  
RALEIGH NC 27699-1591  
PHONE (919) 707-6690  
FAX (919) 250-4151

**Roger Worthington, P.E.** UTILITIES SECTION ENGINEER  
**Carl Barclay, P.E.** UTILITIES SQUAD LEADER PROJECT ENGINEER  
**Bo Hemphill, P.E.** UTILITIES PROJECT DESIGNER

10-DEC-2012 11:22  
R:\Utilities\RDY\_UT\Proj\B4824\_ut\_title.uol.psh.dgn  
\$\$\$\$\$USERNAME\$\$\$\$\$

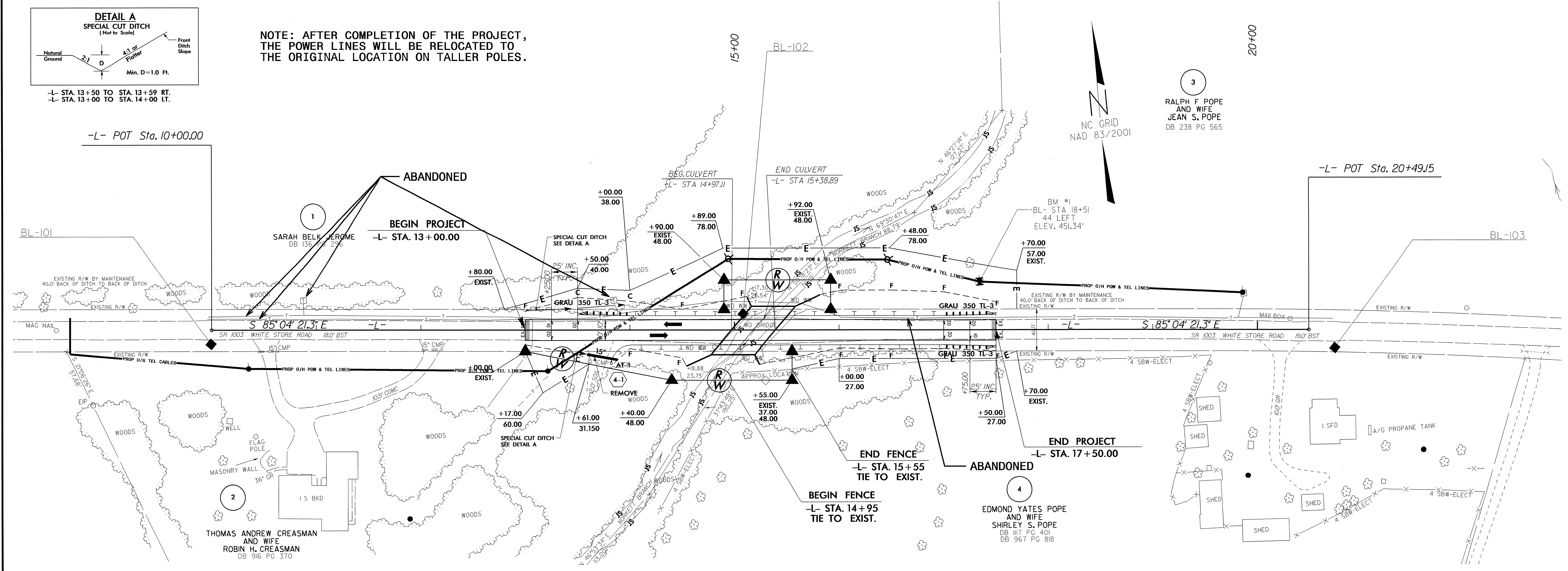
# UTILITIES BY OTHERS

**NOTE:**  
ALL PROPOSED UTILITY WORK  
SHOWN ON THIS SHEET WILL  
BE DONE BY OTHERS



-L- STA. 13+50 TO STA. 13+59 RT.  
-L- STA. 13+00 TO STA. 14+00 LT.

**NOTE:** AFTER COMPLETION OF THE PROJECT,  
THE POWER LINES WILL BE RELOCATED TO  
THE ORIGINAL LOCATION ON TALLER POLES.



5/14/99

10-DEC-2012 10:48  
Utilities\cch\U0-2\Proj\B4824\_u0-4\_uo2\_psh.dgn