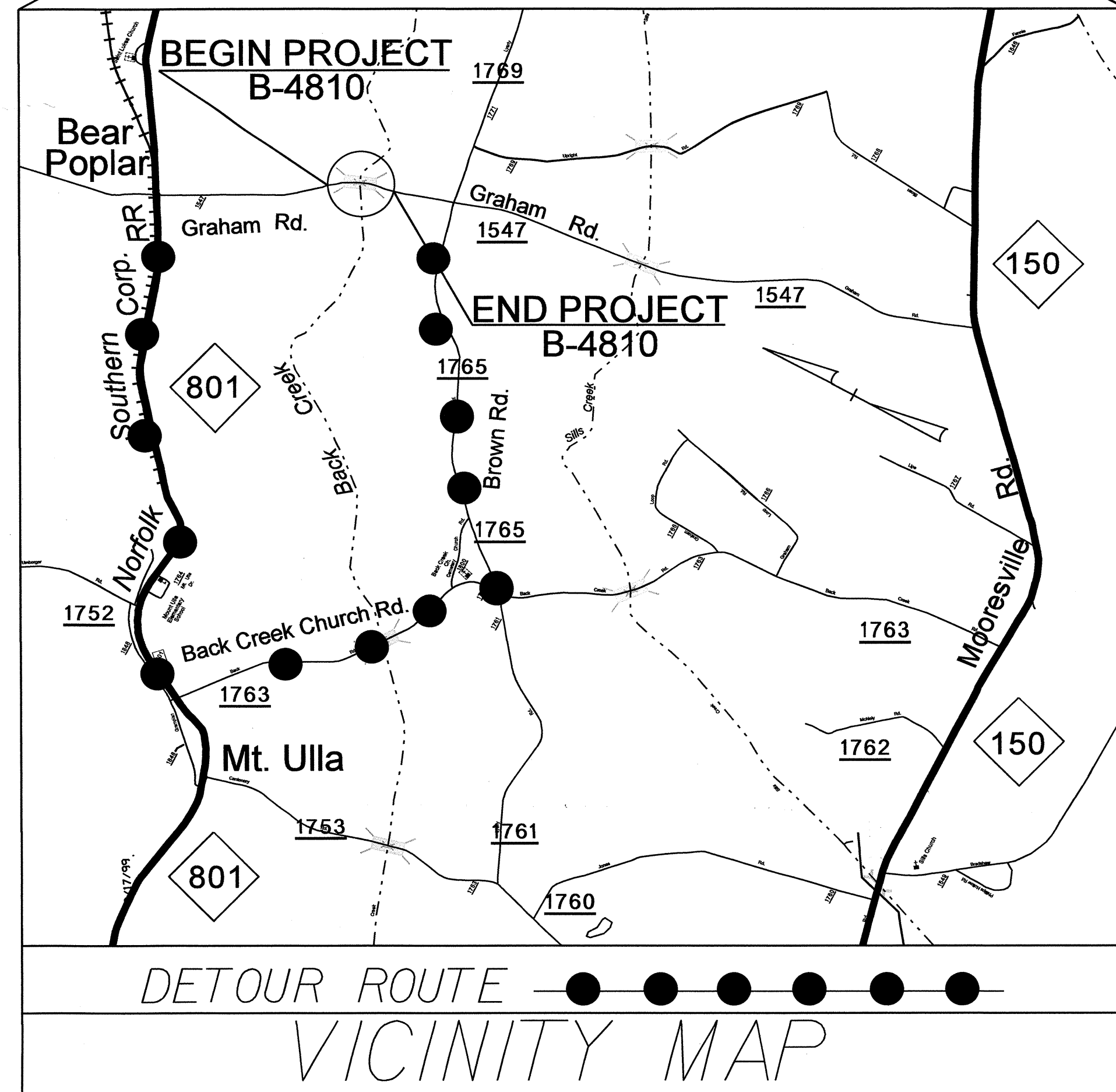
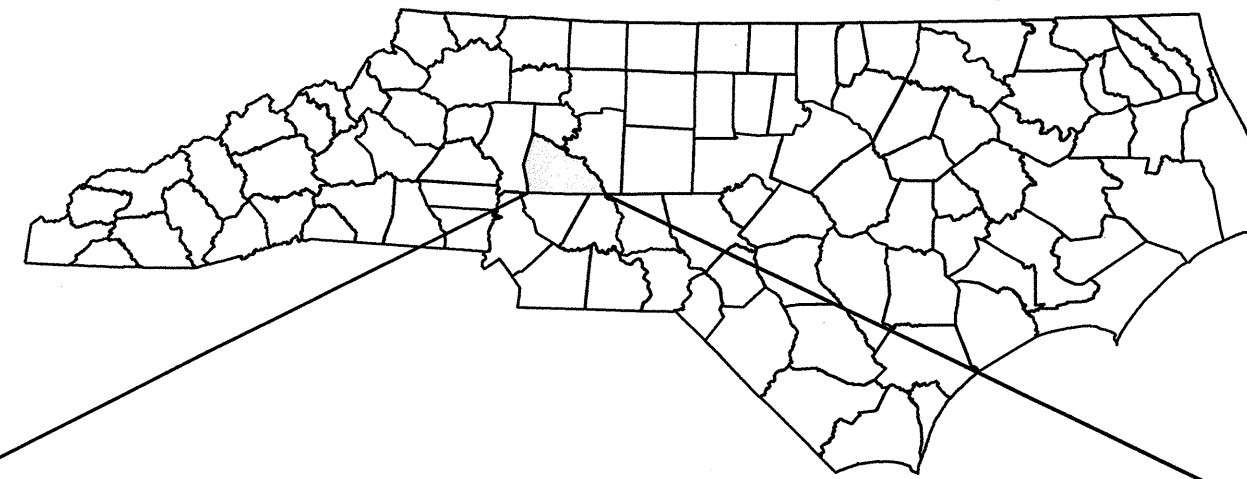


STATE OF NORTH CAROLINA  
DIVISION OF HIGHWAYS

**TRANSPORTATION MANAGEMENT PLAN**

**ROWAN COUNTY**



**INDEX OF SHEETS**

SHEET NO.	TITLE
TMP-1	TITLE SHEET AND INDEX OF SHEETS
TMP-1A	LIST OF APPLICABLE ROADWAY STANDARD DRAWINGS AND LEGEND
TMP-1B	TRANSPORTATION OPERATIONS PLAN: MANAGEMENT STRATEGIES, GENERAL NOTES AND PHASING
TMP-2	OFF-SITE DETOUR ROUTE AND BARRICADE PLACEMENT
SD-1	SPECIAL SIGN DESIGN

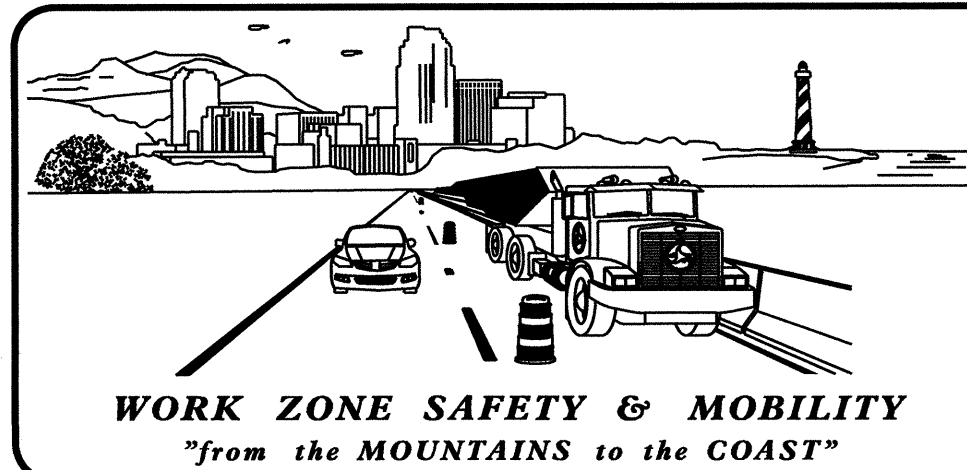
SHEET NO.

TMP-1

**B-4810**

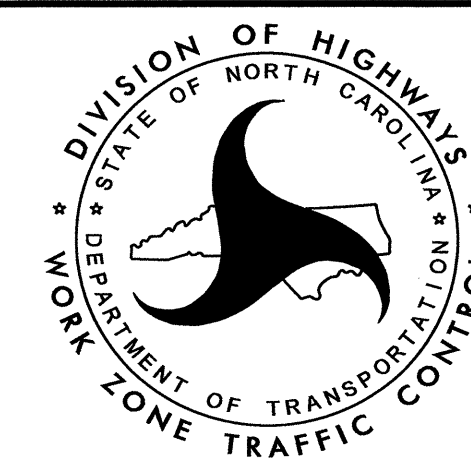
**TIP PROJECT:**

16-AUG-2012 07:57  
\\DOT\DFSR00101\PROJ\TIP\Projects-B\B4810\Traffic\TrafficControl\TCP\B-4810.TC.TMP.i.dgn  
sJennings AT E24731

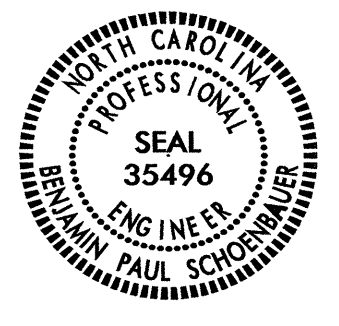


**N.C.D.O.T. WORK ZONE TRAFFIC CONTROL**  
1561 MAIL SERVICE CENTER (MSC) RALEIGH, NC 27699-1561  
750 N. GREENFIELD PARKWAY, GARNER, NC 27529 (DELIVERY)  
PHONE: (919) 773-2800 FAX: (919) 771-2745

J. S. BOURNE, P.E. STATE TRAFFIC MANAGEMENT ENGINEER  
J. ISHAK, P.E. TRAFFIC CONTROL PROJECT ENGINEER  
B. P. SCHOENBAUER, P.E. TRAFFIC CONTROL PROJECT DESIGN ENGINEER  
S. B. JENNINGS TRAFFIC CONTROL DESIGN ENGINEER



APPROVED: *Sam Schaubert*  
DATE: August 16, 2012



## ROADWAY STANDARD DRAWINGS

THE FOLLOWING ROADWAY STANDARDS AS SHOWN IN "ROADWAY STANDARD DRAWINGS" - PROJECT SERVICES UNIT - N.C. DEPARTMENT OF TRANSPORTATION - RALEIGH, N.C., DATED JANUARY 2012 ARE APPLICABLE TO THIS PROJECT AND BY REFERENCE HEREBY ARE CONSIDERED A PART OF THESE PLANS:

STD. NO.	TITLE
1101.03	TEMPORARY ROAD CLOSURES
1101.11	TRAFFIC CONTROL DESIGN TABLES
1110.01	STATIONARY WORK ZONE SIGNS
1145.01	BARRICADES

## LEGEND

### GENERAL

- DIRECTION OF TRAFFIC FLOW
- EXIST. PVMT.
- NORTH ARROW
- PROPOSED PVMT.
- WORK AREA

### TRAFFIC CONTROL DEVICES

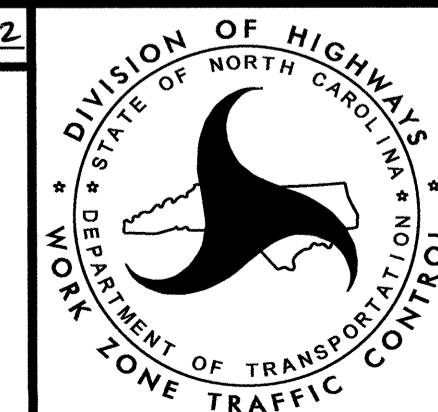
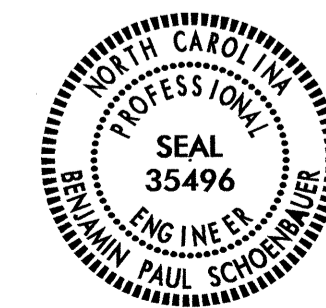
- BARRICADE (TYPE III)
- CONE
- DRUM    SKINNY DRUM    TUBULAR MARKER
- FLASHING ARROW PANEL (TYPE C)
- FLAGGER
- TRUCK MOUNTED IMPACT ATTENUATOR (TMIA)
- CHANGEABLE MESSAGE SIGN

### TEMPORARY SIGNING

- PORTABLE SIGN
- STATIONARY SIGN
- STATIONARY OR PORTABLE SIGN

16-AUG-2012 07:58  
 \\DOT\SR00701\PROJ\TIP\Projects\B4810\TrafficControl\TCP\B-4810.TC.TMP-1A.dgn  
 sbjennings AT TE244731

APPROVED: *Paul Schindler* DATE: 8/16/12



ROADWAY STANDARD  
DRAWINGS & LEGEND

## MANAGEMENT STRATEGIES

- DURING REPLACEMENT OF THE EXISTING BRIDGE No.12 OVER BACK CREEK ON SR 1547 (GRAHAM RD.) WILL BE CLOSED TO THROUGH TRAFFIC. THE GRAHAM RD. TRAFFIC WILL BE MAINTAINED ON THE FOLLOWING OFF-SITE DETOUR ROUTE: FROM SR 1547 TO SR 1765 (BROWN RD.) TO SR 1763 (BACK CREEK CHURCH RD.) TO NC 801 BACK TO SR 1547.
- ACCESS TO ALL RESIDENCES MUST BE PROVIDED AT ALL TIMES WITHIN THE PROJECT LIMITS.

## GENERAL NOTES

CHANGES MAY BE REQUIRED WHEN PHYSICAL DIMENSIONS IN THE DETAIL DRAWINGS, STANDARD DETAILS AND ROADWAY DETAILS ARE NOT ATTAINABLE TO MEET FIELD CONDITIONS, OR RESULT IN DUPLICATE, OR UNDESIRED OVERLAPPING OF DEVICES. MODIFICATION MAY INCLUDE: MOVING, SUPPLEMENTING, COVERING OR REMOVAL OF DEVICES, AS DIRECTED BY THE ENGINEER.

THE FOLLOWING GENERAL NOTES APPLY AT ALL TIMES FOR THE DURATION OF THE CONSTRUCTION PROJECT, EXCEPT WHEN OTHERWISE NOTED IN THE PLAN, OR DIRECTED BY THE ENGINEER.

### TRAFFIC PATTERN ALTERATIONS

- A) NOTIFY THE ENGINEER TWENTY ONE (21) CALENDAR DAYS PRIOR TO ANY TRAFFIC PATTERN ALTERATION.

### SIGNING

- B) PROVIDE PERMANENT SIGNING.
- C) PROVIDE SIGNING AND DEVICES REQUIRED TO CLOSE THE ROAD ACCORDING TO THE ROADWAY STANDARD DRAWINGS AND TRAFFIC CONTROL PLANS.

PROVIDE SIGNING REQUIRED FOR THE OFF-SITE DETOUR ROUTE AS SHOWN IN THE TRAFFIC CONTROL PLANS.

- D) COVER OR REMOVE ALL SIGNS AND DEVICES REQUIRED TO CLOSE THE ROAD WHEN ROAD CLOSURE IS NOT IN OPERATION.

COVER OR REMOVE ALL SIGNS REQUIRED FOR THE OFF-SITE DETOUR WHEN THE DETOUR IS NOT IN OPERATION.

- E) ENSURE ALL NECESSARY SIGNING IS IN PLACE PRIOR TO ALTERING ANY TRAFFIC PATTERN.

### TRAFFIC CONTROL DEVICES

- F) PLACE TYPE III BARRICADES, WITH "ROAD CLOSED" SIGN R11-2 ATTACHED, OF SUFFICIENT LENGTH TO CLOSE ENTIRE ROADWAY.

### PAVEMENT MARKINGS AND MARKERS

- G) INSTALL PAVEMENT MARKINGS AND PAVEMENT MARKERS ON THE FINAL SURFACE AS SHOWN IN THE PAVEMENT MARKING PLAN.
- H) TIE PROPOSED PAVEMENT MARKING LINES TO EXISTING PAVEMENT MARKING LINES.

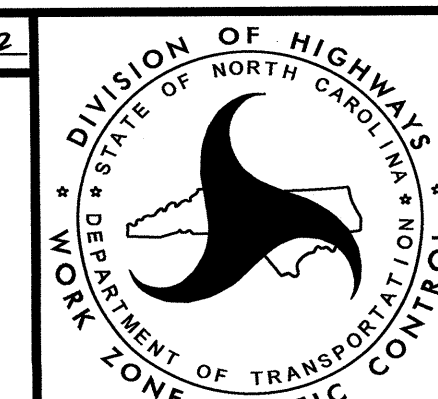
## PHASING

MAINTAIN ACCESS TO ALL RESIDENCES AT ALL TIMES WITHIN THE PROJECT LIMITS

- STEP 1:  
USING RSD 1101.03, SHEET 1 OF 9, SHEETS TMP-2 AND SD-1, INSTALL DETOUR SIGNS, PLACE TYPE III BARRICADES TO CLOSE SR 1547 (GRAHAM RD.) TO THROUGH TRAFFIC, AND DETOUR TRAFFIC OFFSITE.
- STEP 2:  
AWAY FROM TRAFFIC, COMPLETE THE FOLLOWING:
  - 1) REMOVE EXISTING STRUCTURE (NO. 12) AND CONSTRUCT PROPOSED STRUCTURE. (SEE ROADWAY AND STRUCTURE PLANS)
  - 2) CONSTRUCT PROPOSED ROADWAY UP TO AND INCLUDING FINAL LAYER OF SURFACE COURSE. (SEE ROADWAY PLANS)
  - 3) PLACE FINAL PAVEMENT MARKINGS AND TIE INTO EXISTING PAVEMENT MARKINGS. (SEE PAVEMENT MARKING PLANS)
- STEP 3:  
REMOVE ALL TRAFFIC CONTROL DEVICES, ALL DETOUR SIGNING AND OPEN SR 1547 (GRAHAM RD.) TO PROPOSED TRAFFIC PATTERN.

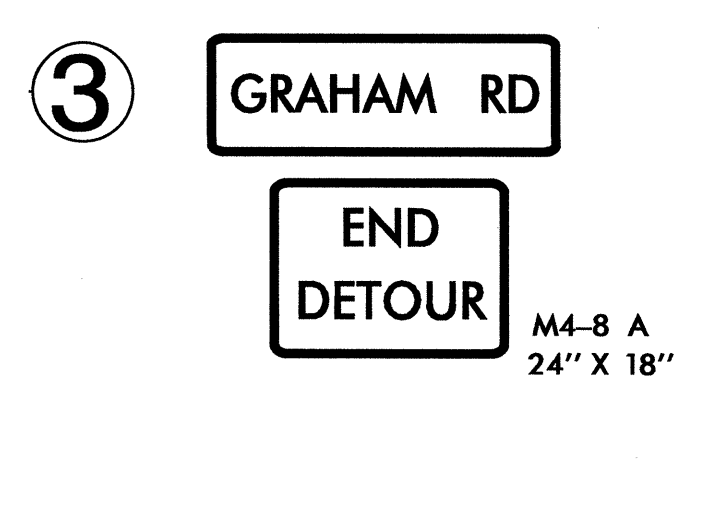
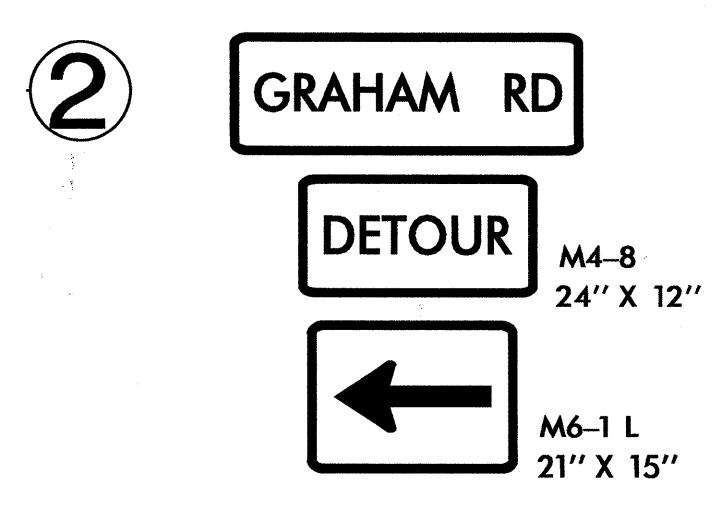
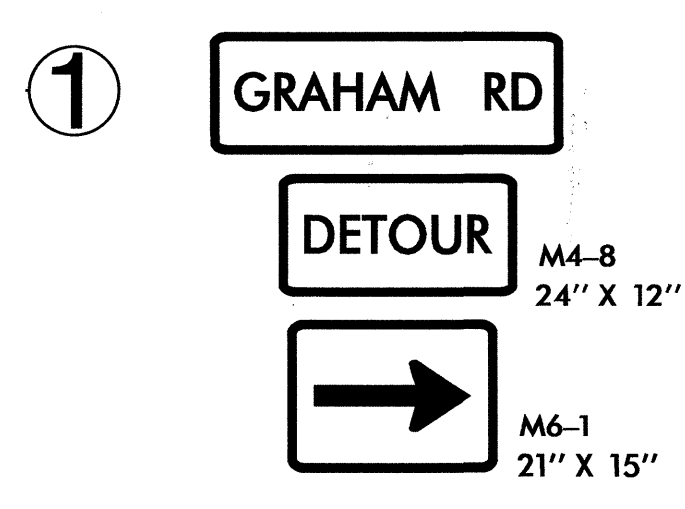
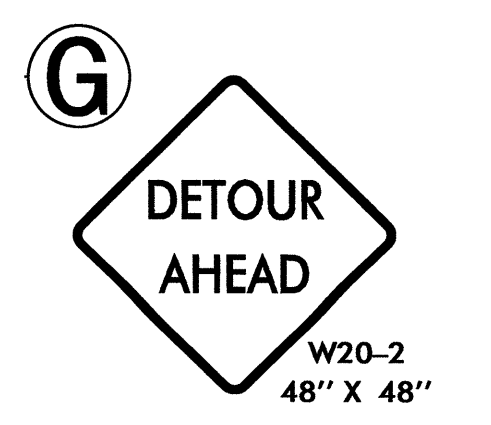
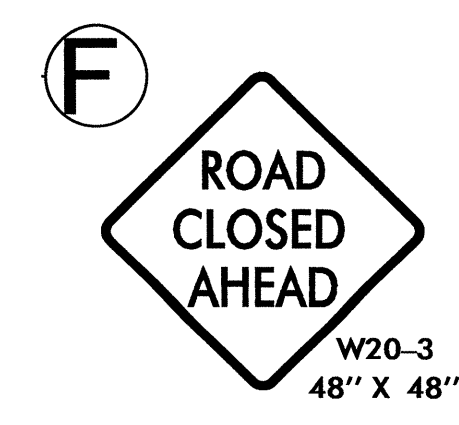
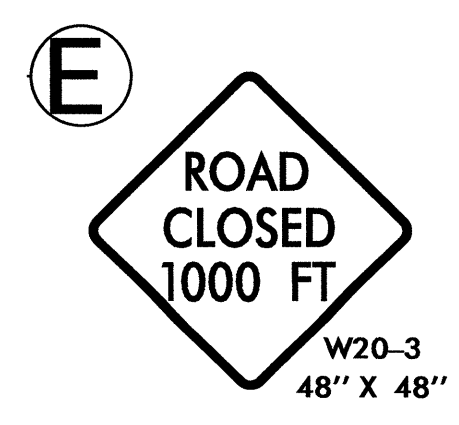
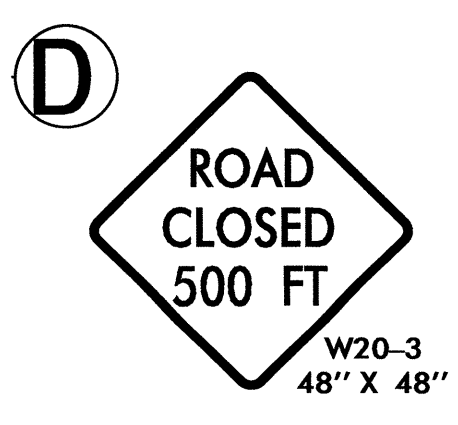
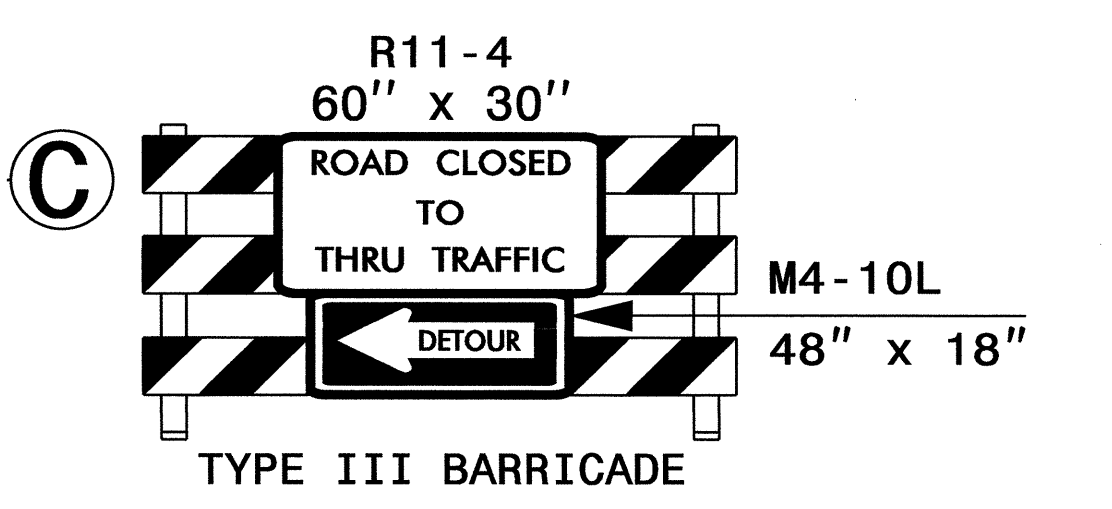
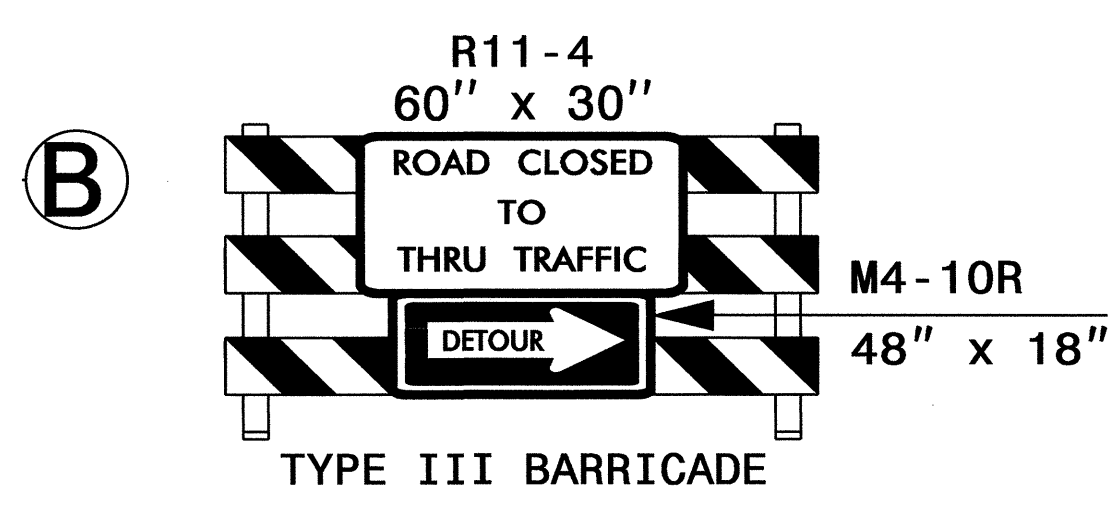
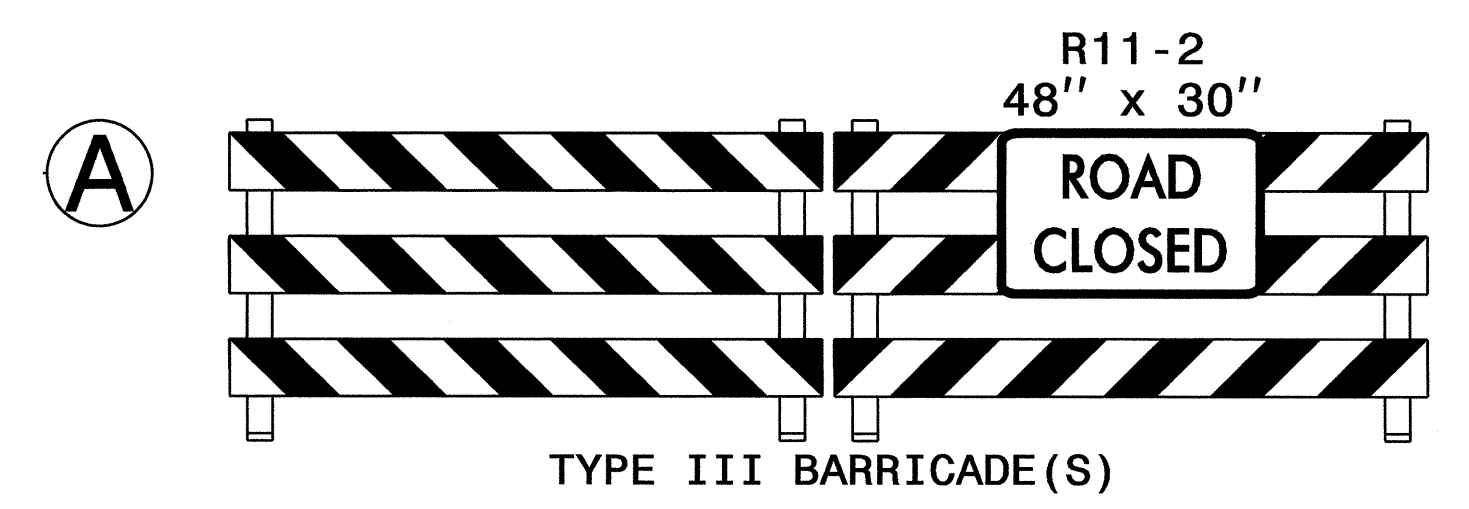
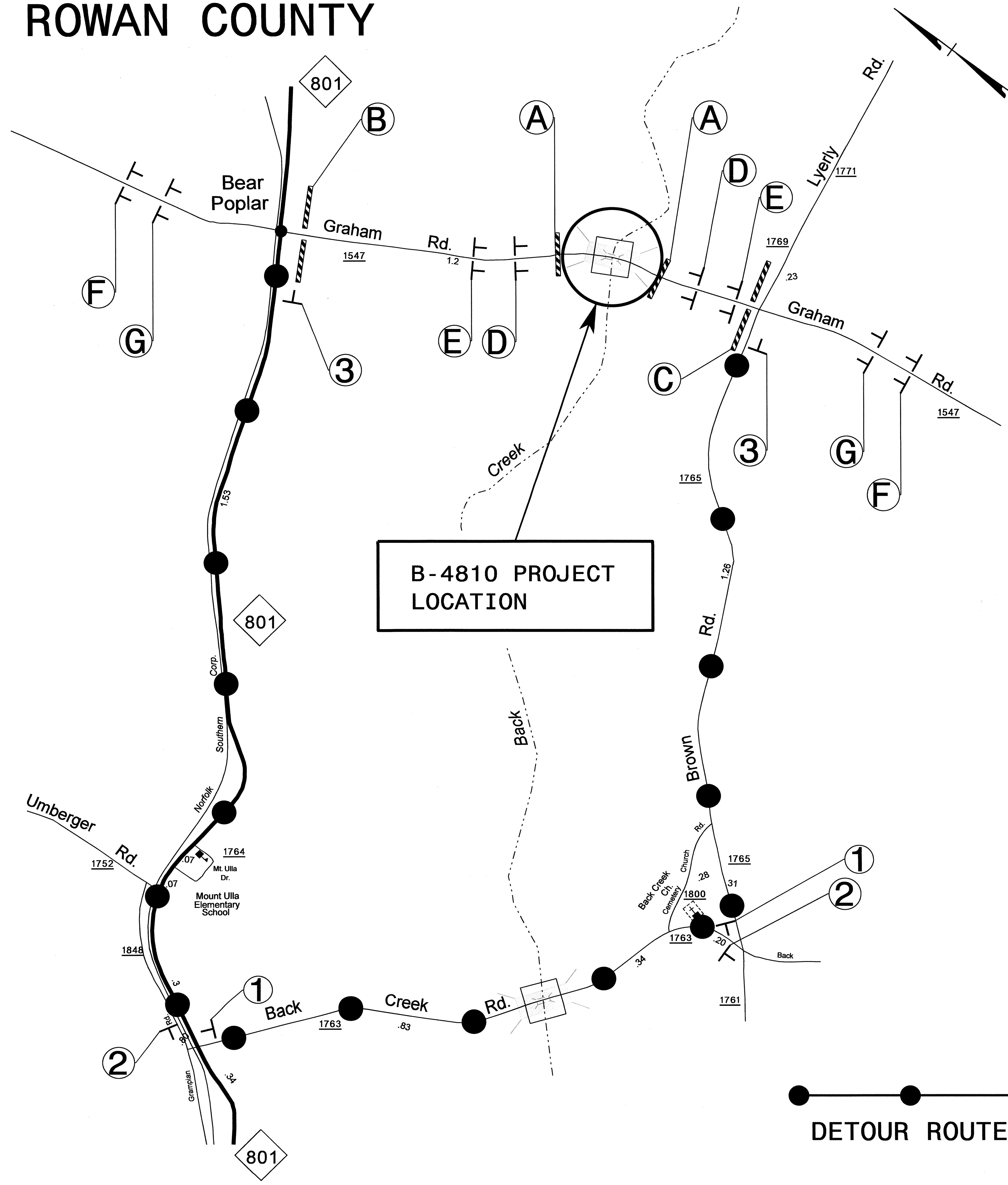
16-AUG-2012 08:00  
\\DOT\DF\SR00101\PROJ\TIPPr\objects-B\B4810\Traffic\TrafficControl\TCP\B-4810.TC.TMP\_IB.dgn  
sbjennings AT TE244731

APPROVED: *Ben Schenck* DATE: 8/16/12



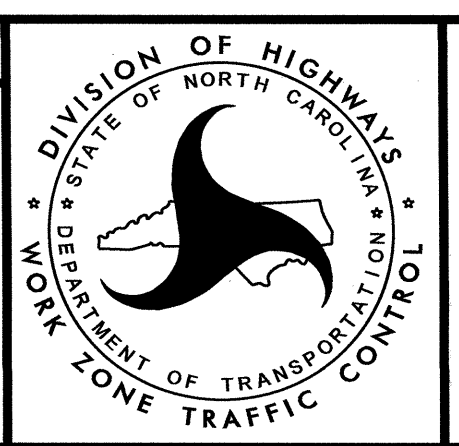
TRANSPORTATION  
OPERATION PLAN

# ROWAN COUNTY



NOTES:  
 TRAFFIC CONTROL DEVICES (A) THRU (G) SHALL BE INSTALLED ACCORDING TO ROADWAY STANDARD DRAWING NO. 1101.03, SHEETS 1 AND 2 OF 9.  
 TRAFFIC CONTROL DEVICES (1) THRU (3) SHALL BE INSTALLED AS SHOWN ON PLAN OR AS DIRECTED BY THE ENGINEER.

APPROVED: *Paul Schenauer* DATE: 8/14/12



OFF-SITE DETOUR ROUTE AND BARRICADE PLACEMENT

16-AUG-2012 08:01  
 \\DOT\DFSR00701\PROJECTS\B-4810\TrafficControl\TCP\B-4810\_TC\_TMP-2.dgn  
 sbjennings AT TE244731