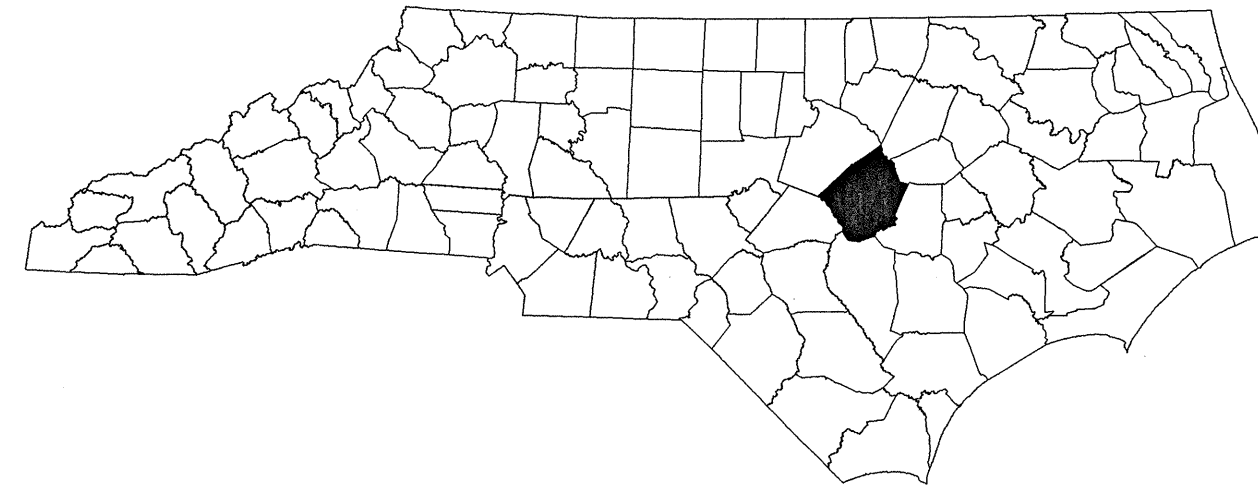


STATE OF NORTH CAROLINA  
DIVISION OF HIGHWAYS

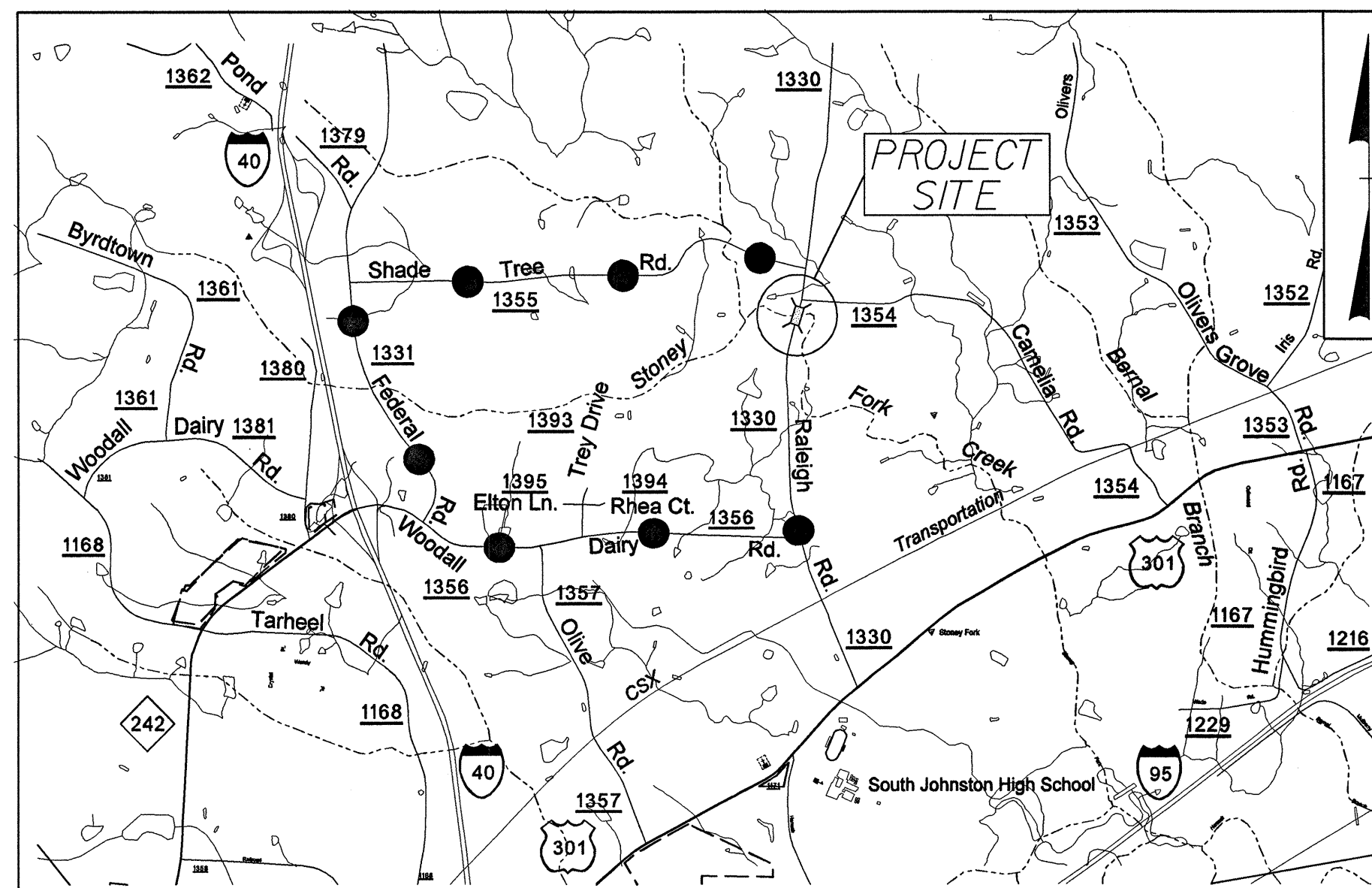
**TRANSPORTATION MANAGEMENT PLAN**

**JOHNSTON COUNTY**



**LOCATION:** BRIDGE NO. 86 OVER  
STONY FORK CREEK  
AND APPROACHES ON  
SR 1330 (RALEIGH ROAD)

**TYPE OF WORK:** GRADING, PAVING,  
DRAINAGE, AND  
STRUCTURE



**VICINITY MAP**

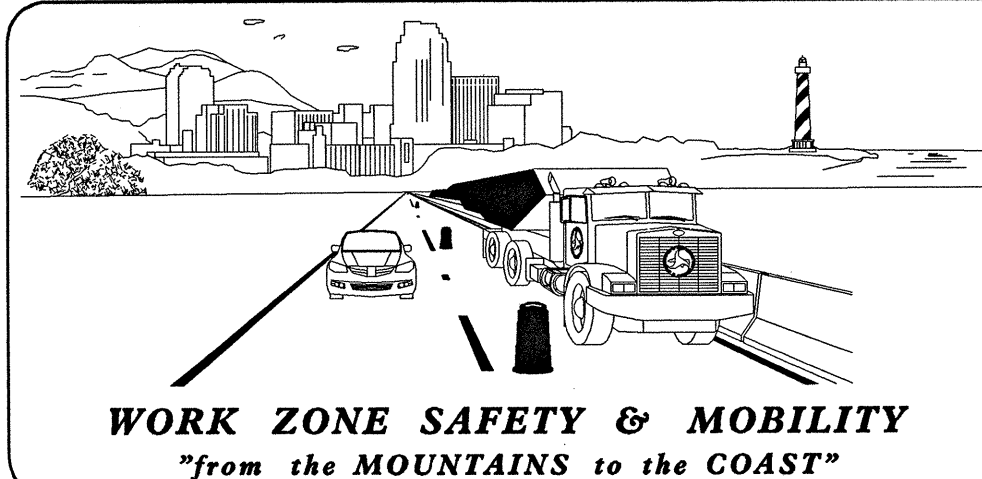
DETOUR ROUTE ●●●●●●●●

SHEET NO.	TITLE
TMP-1	TITLE SHEET, VICINITY MAP, AND INDEX OF SHEETS
TMP-1A	LIST OF APPLICABLE ROADWAY STANDARD DRAWINGS AND LEGEND
TMP-1B	TRANSPORTATION OPERATIONS PLAN: (GENERAL NOTES, MANAGEMENT STRATEGIES, LOCAL NOTES, AND PHASING)
TMP-2	OFF-SITE DETOUR
TMP-3	ROAD CLOSURE
TMP-4	SPECIAL SIGN DESIGN

SHEET NO.  
TMP-1

**B-4558**

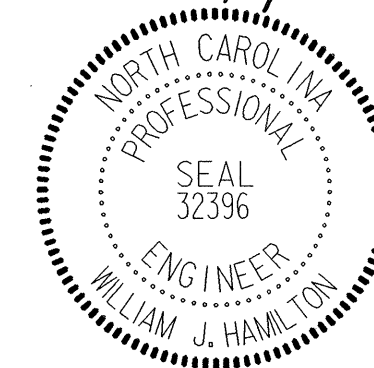
**TIP PROJECT:**



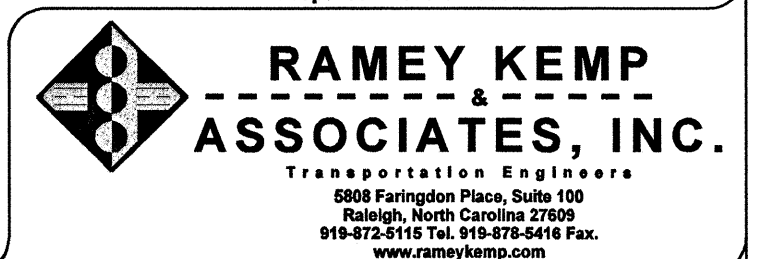
**PLANS PREPARED BY:**

W. Jason Hamilton, P.E., PTOE – Project Manager  
Nicholas E. Burns, E.I. – Project Engineer

APPROVED: *[Signature]*  
DATE: 11/11/12



Prepared in the offices of:



**WORK ZONE TRAFFIC CONTROL UNIT**

*Contacts:*  
J. Stuart Bourne, P.E. – State Traffic Management Engineer  
Steve Kite, P.E. – Eastern Region Work Zone Traffic Control Engineer  
David Bissette, P.E. – Eastern Region Project Design Engineer

# ROADWAY STANDARD DRAWINGS

THE FOLLOWING ROADWAY STANDARDS AS SHOWN IN "ROADWAY STANDARD DRAWINGS" - PROJECT SERVICES UNIT - N.C. DEPARTMENT OF TRANSPORTATION - RALEIGH, N.C., DATED JANUARY 2012 ARE APPLICABLE TO THIS PROJECT AND BY REFERENCE HEREBY ARE CONSIDERED A PART OF THESE PLANS:

STD. NO.	TITLE
1101.03	TEMPORARY ROAD CLOSURES
1101.05	WORK ZONE VEHICLE ACCESSES
1110.01	STATIONARY WORK ZONE SIGNS
1145.01	BARRICADES - TYPE III

# LEGEND

## GENERAL

- DIRECTION OF TRAFFIC FLOW
- DIRECTION OF PEDESTRIAN TRAFFIC FLOW
- EXIST. PVMT.
- NORTH ARROW
- PROPOSED PVMT.

- WORK AREA
- REMOVAL
- USER DEFINED (IF NEEDED)
- USER DEFINED (IF NEEDED)

## TRAFFIC CONTROL DEVICES

- BARRICADE (TYPE III)
- CONE
- DRUM    SKINNY DRUM    TUBULAR MARKER
- TEMPORARY CRASH CUSHION
- FLASHING ARROW PANEL (TYPE C)
- FLAGGER
- LAW ENFORCEMENT
- TRUCK MOUNTED IMPACT ATTENUATOR (TMIA)
- CHANGEABLE MESSAGE SIGN

## TEMPORARY SIGNING

- PORTABLE SIGN
- STATIONARY SIGN
- STATIONARY OR PORTABLE SIGN

## SIGNALS

- EXISTING
- PROPOSED
- T  
E  
M  
P  
ORARY

## PAVEMENT MARKINGS

- EXISTING LINES
- TEMPORARY LINES

## PAVEMENT MARKERS

- CRYSTAL/CRYSTAL
- CRYSTAL/RED
- YELLOW/YELLOW

## PAVEMENT MARKING SYMBOLS

- PAVEMENT MARKING SYMBOLS

Prepared in the offices of:  
**RAMEY KEMP ASSOCIATES, INC.**  
 Transportation Engineers  
 6800 Montgomerie Place, Suite 100  
 Raleigh, North Carolina 27609  
 910-872-5115 Tel. 910-872-4418 Fax  
 www.rameykemp.com

APPROVED:	DATE: 11/1/12	<b>ROADWAY STANDARD DRAWINGS &amp; LEGEND</b>						
SCALE: NONE	Prepared For:	<table border="1"> <thead> <tr> <th>REVISIONS</th> </tr> </thead> <tbody> <tr><td> </td></tr> <tr><td> </td></tr> <tr><td> </td></tr> <tr><td> </td></tr> </tbody> </table>		REVISIONS				
REVISIONS								
DATE: 11/12								
DEVELOPED BY: NEB								
REVIEWED BY: WJH								
RCA PROJ. #: 12093	CADD FILE							

## **MANAGEMENT STRATEGIES**

- CLOSE THE ROAD.
- DETOUR THROUGH TRAFFIC OFF SITE.
- MAINTAIN LOCAL TRAFFIC.

## **GENERAL NOTES**

CHANGES MAY BE REQUIRED WHEN PHYSICAL DIMENSIONS IN THE DETAIL DRAWINGS, STANDARD DETAILS, AND ROADWAY DETAILS ARE NOT ATTAINABLE TO MEET FIELD CONDITIONS OR RESULT IN DUPLICATE OR UNDESIRED OVERLAPPING OF DEVICES. MODIFICATION MAY INCLUDE: MOVING, SUPPLEMENTING, COVERING, OR REMOVAL OF DEVICES AS DIRECTED BY THE ENGINEER.

THE FOLLOWING GENERAL NOTES APPLY AT ALL TIMES FOR THE DURATION OF THE CONSTRUCTION PROJECT EXCEPT WHEN OTHERWISE NOTED IN THE PLAN OR DIRECTED BY THE ENGINEER.

### TRAFFIC PATTERN ALTERATIONS

- A) NOTIFY THE ENGINEER TWENTY ONE (21) CALENDAR DAYS PRIOR TO ANY TRAFFIC PATTERN ALTERATION.

### SIGNING

- B) PROVIDE SIGNING AND DEVICES REQUIRED TO CLOSE THE ROAD ACCORDING TO THE ROADWAY STANDARD DRAWINGS AND TRAFFIC MANAGEMENT PLANS.
- C) PROVIDE SIGNING REQUIRED FOR THE OFF-SITE DETOUR ROUTE AS SHOWN IN THE TRAFFIC MANAGEMENT PLANS.
- D) COVER OR REMOVE ALL SIGNS AND DEVICES REQUIRED TO CLOSE THE ROAD WHEN ROAD CLOSURE IS NOT IN OPERATION.
- E) COVER OR REMOVE ALL SIGNS REQUIRED FOR THE OFF-SITE DETOUR WHEN THE DETOUR IS NOT IN OPERATION.
- F) ENSURE ALL NECESSARY SIGNING IS IN PLACE PRIOR TO ALTERING ANY TRAFFIC PATTERN.

### TRAFFIC CONTROL DEVICES

- G) PLACE TYPE III BARRICADES, WITH "ROAD CLOSED" SIGN R11-2 ATTACHED, OF SUFFICIENT LENGTH TO CLOSE ENTIRE ROADWAY.

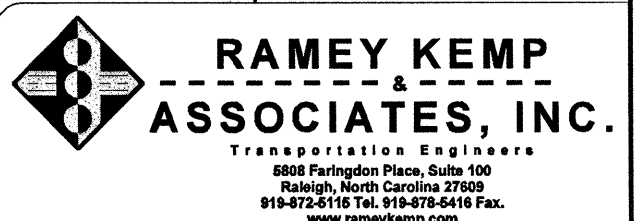
## **LOCAL NOTES**

1. NOTIFY JOHNSTON COUNTY EMERGENCY SERVICES (919)-934-5050 AND JOHNSTON COUNTY PUBLIC SCHOOLS (919)-934-8340 AT LEAST ONE MONTH PRIOR TO ROAD CLOSURE.
2. ALL SIGN SPACING DIMENSIONS ARE APPROXIMATE, FIELD ADJUST AS NECESSARY OR AS DIRECTED BY THE ENGINEER.
3. MAINTAIN LOCAL TRAFFIC WITHIN ROAD CLOSURE.

## **PHASING**

- STEP 1 INSTALL OFF-SITE DETOUR SIGNING AS SHOWN ON TMP-2 PRIOR TO ROAD CLOSURE. INSTALL SIGNS AND BARRICADES CLOSING SR 1330 (RALEIGH RD) TO THROUGH TRAFFIC AS SHOWN ON TMP-2 AND TMP-3 AND IN ACCORDANCE WITH ROADWAY STANDARD DRAWING 1101.03, SHEET 1 OF 9. (SEE LOCAL NOTES 1 AND 2)
- STEP 2 PERFORM THE FOLLOWING WITHIN THE ROAD CLOSURE: (SEE LOCAL NOTE NO. 3)
- REMOVE THE EXISTING STRUCTURE
  - CONSTRUCT THE PROPOSED STRUCTURE
  - CONSTRUCT THE PROPOSED ROADWAY SECTION -L- UP TO BUT NOT INCLUDING THE FINAL LAYER OF SURFACE FROM STA 18+60 TO STA 22+90.
- STEP 3 PLACE THE FINAL LAYER OF SURFACE COURSE AND FINAL PAVEMENT MARKINGS FROM STA 18+60 TO STA 22+90.
- STEP 4 REMOVE ALL WORK ZONE TRAFFIC CONTROL DEVICES AND OPEN SR 1330 (RALEIGH RD) TO THROUGH TRAFFIC.

Prepared in the offices of:

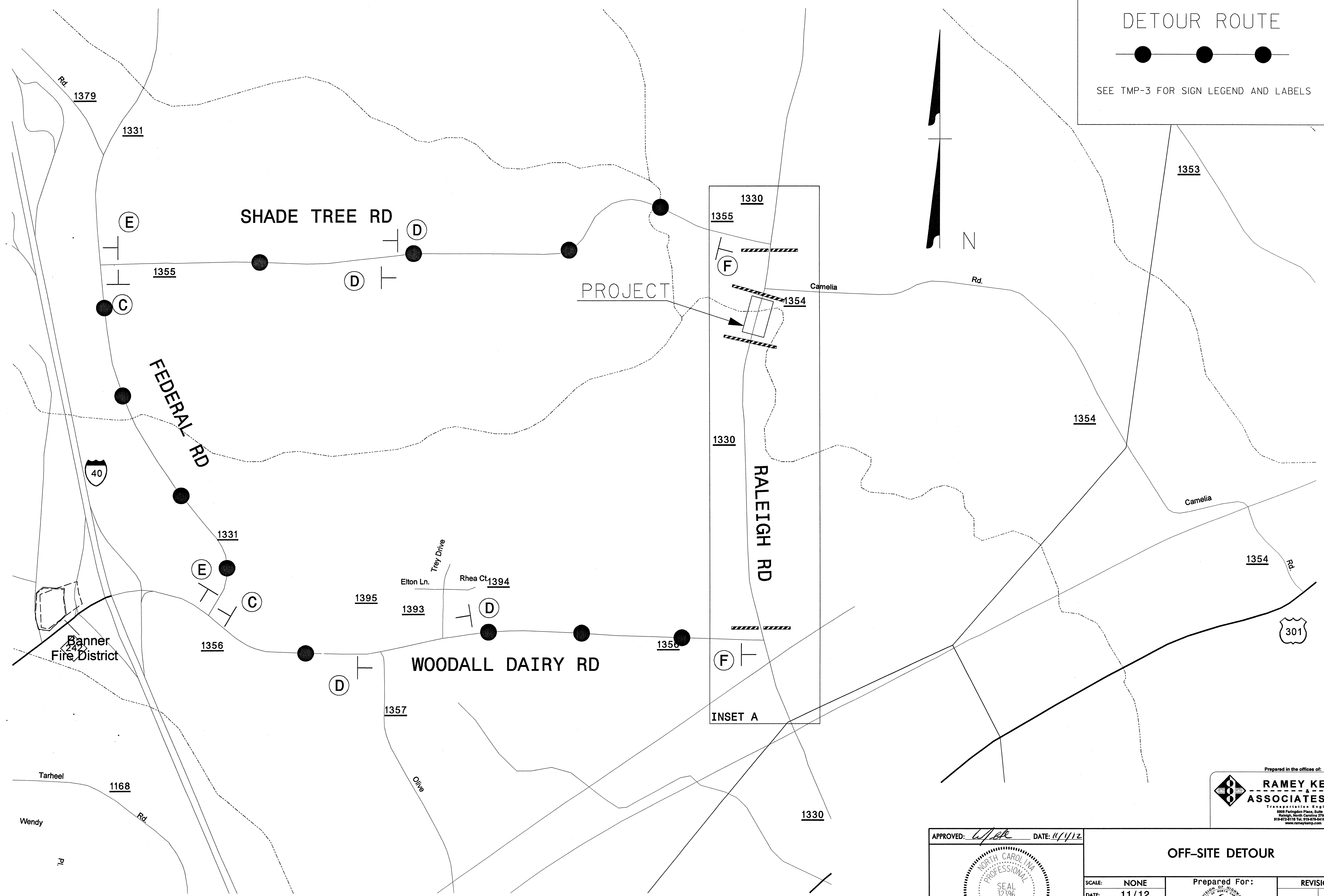


APPROVED: <i>WJH</i>	DATE: 11/12	<b>TRANSPORTATION OPERATIONS PLAN</b>	
	SCALE: NONE		Prepared For:
	DATE: 11/12		
	DEVELOPED BY: NEB		
	REVIEWED BY: WJH		
RKA PROJ. #: 12093			REVISIONS
			CADD FILE

# DETOUR ROUTE



SEE TMP-3 FOR SIGN LEGEND AND LABELS



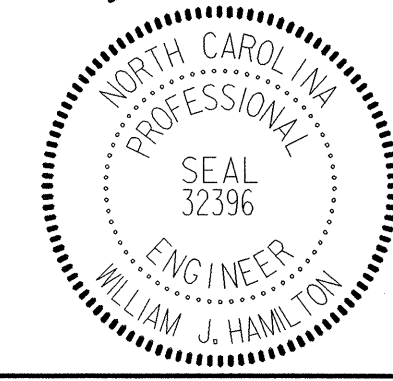
Banner Fire District

INSET A

Prepared in the offices of:

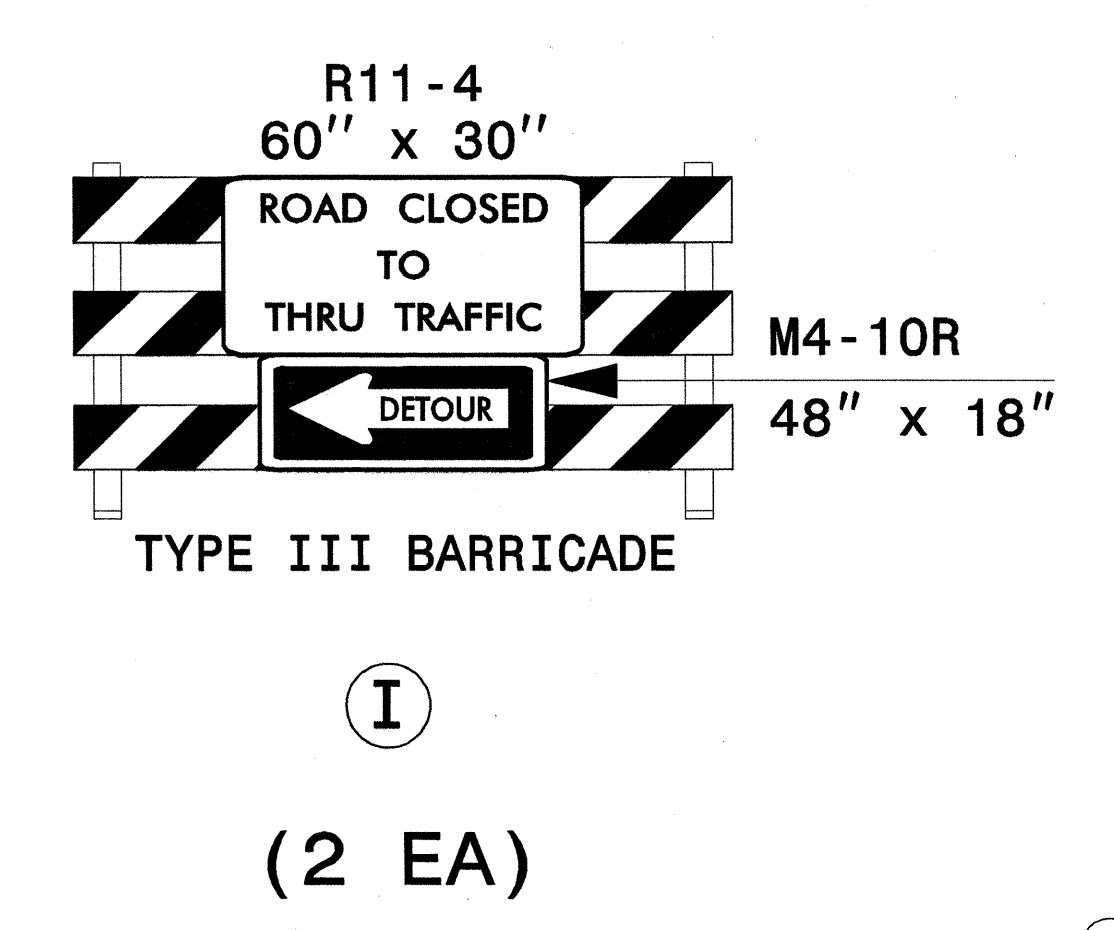
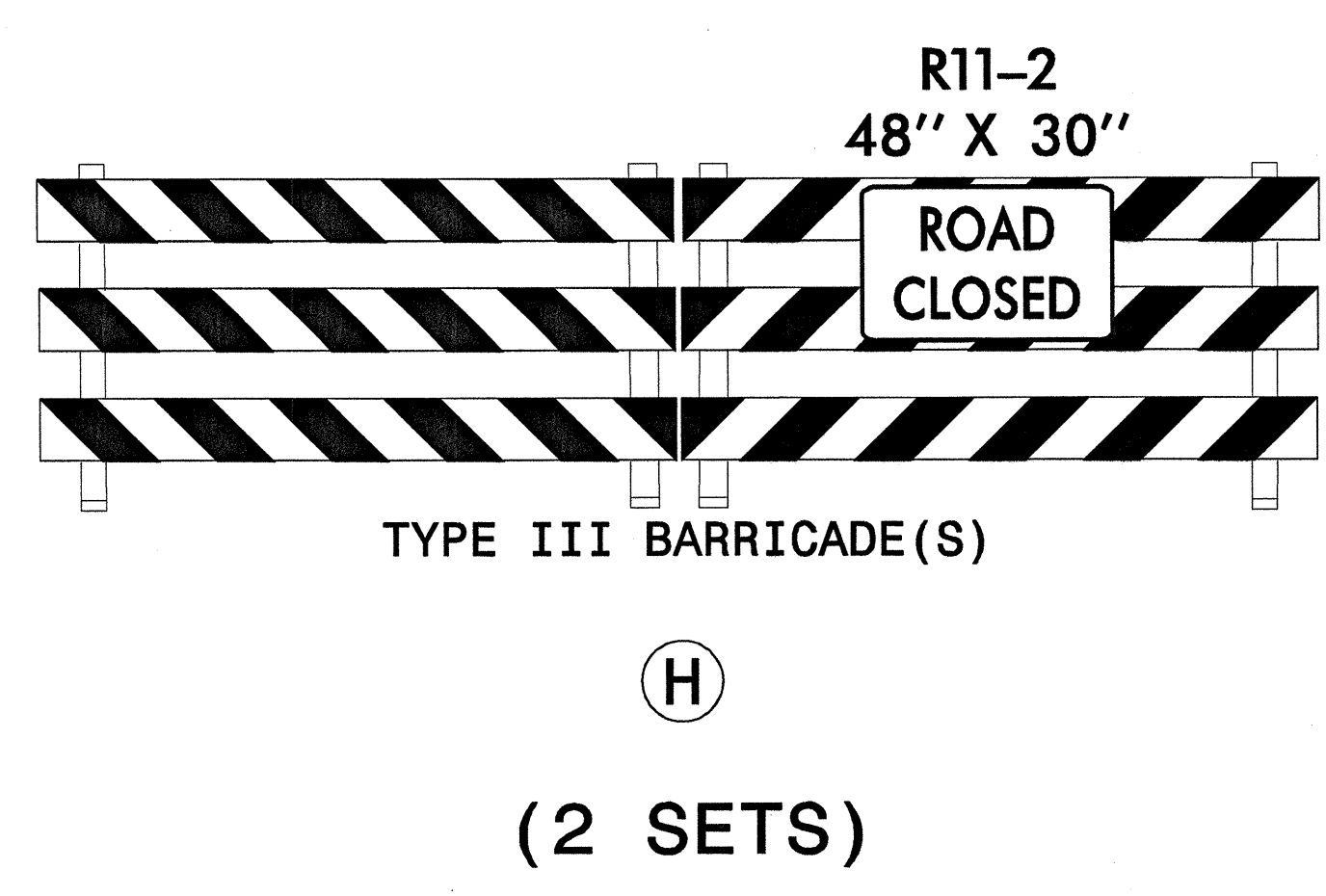
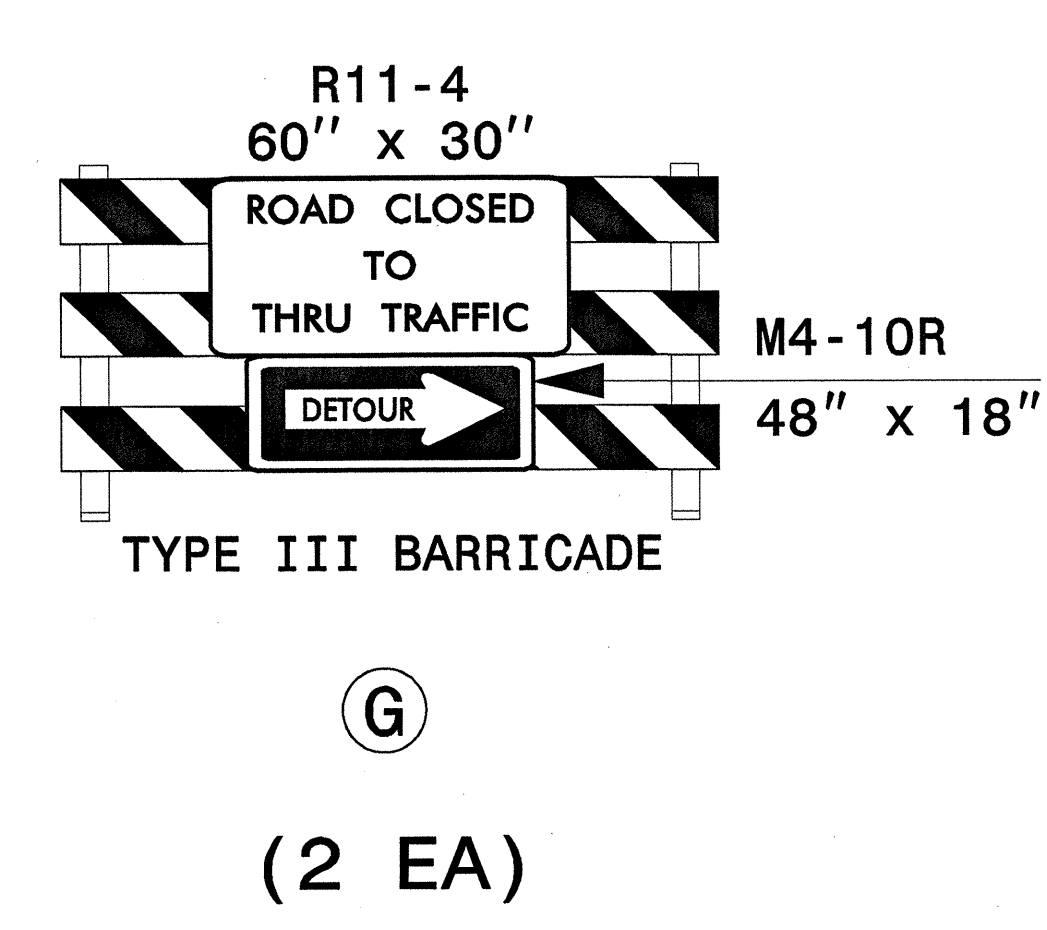
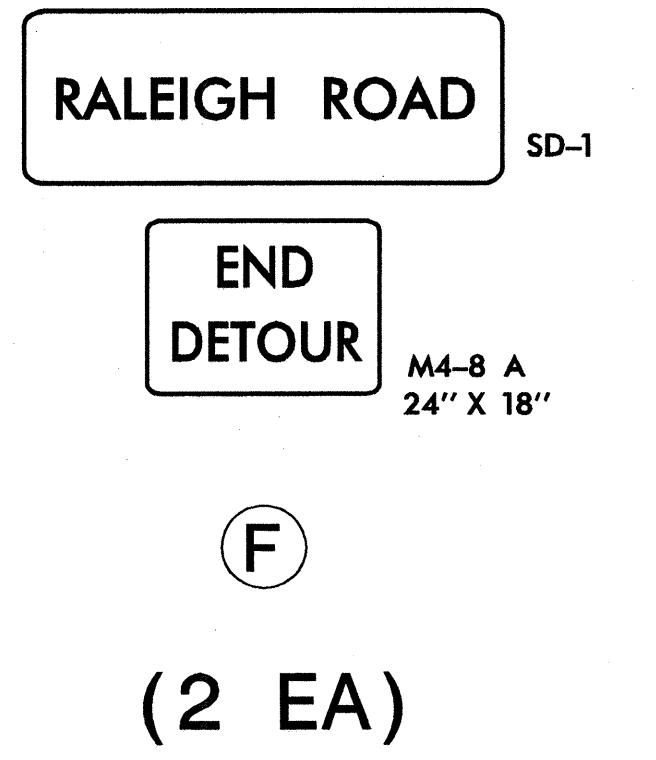
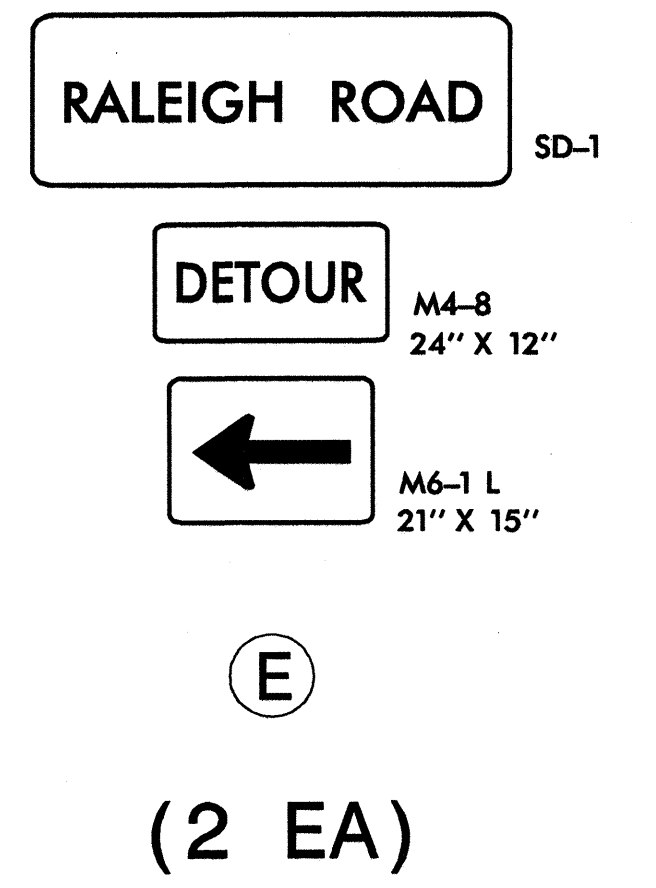
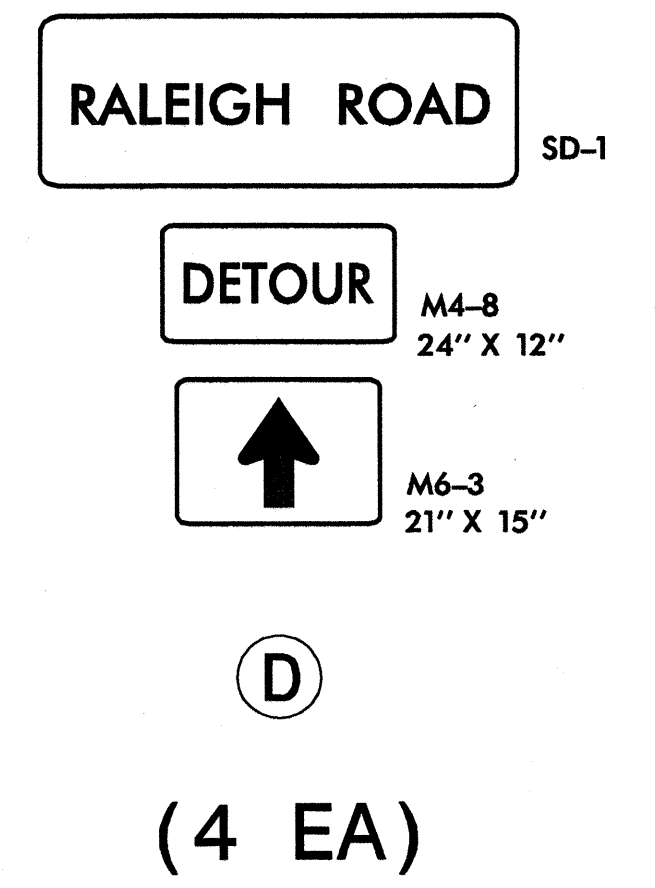
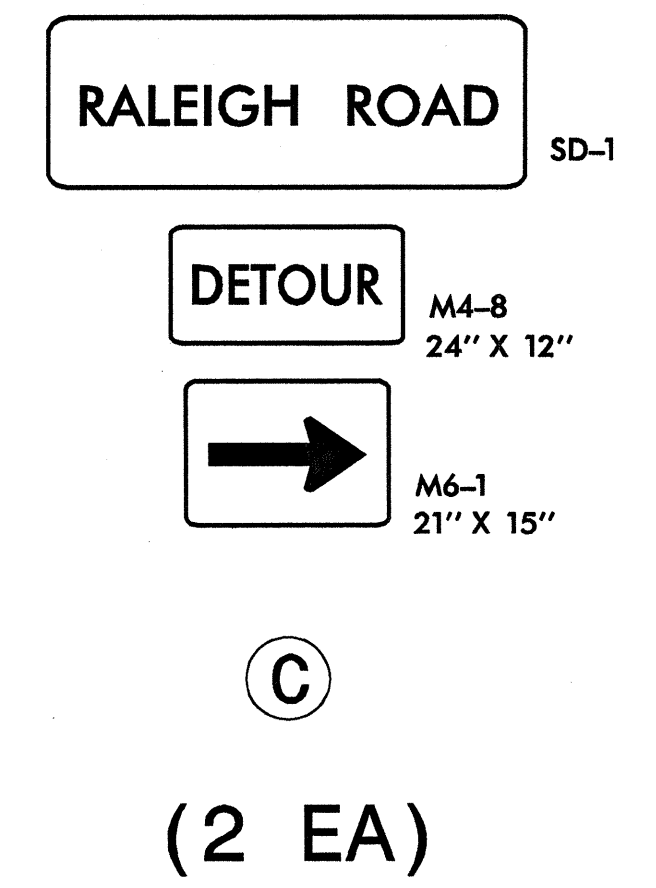
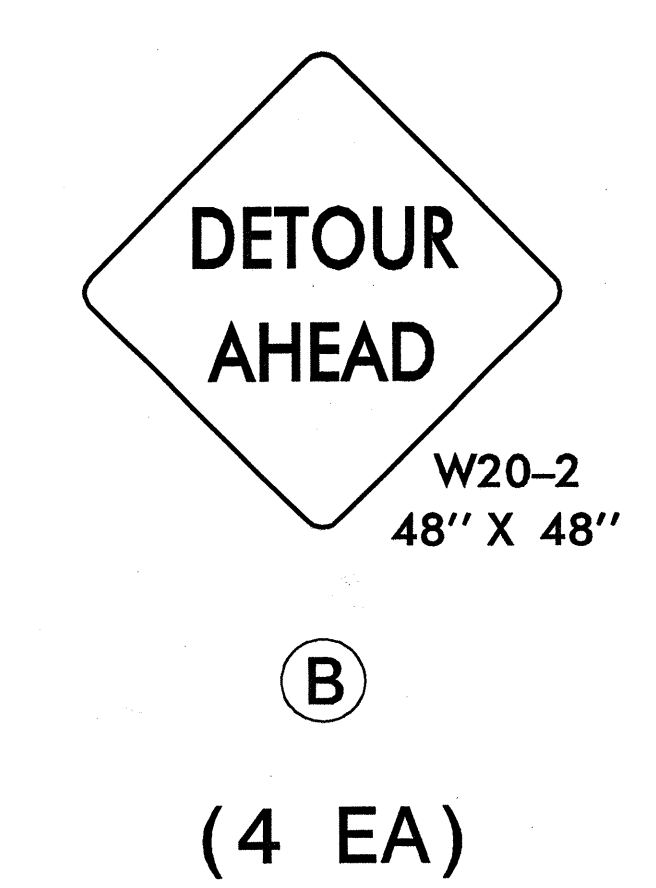
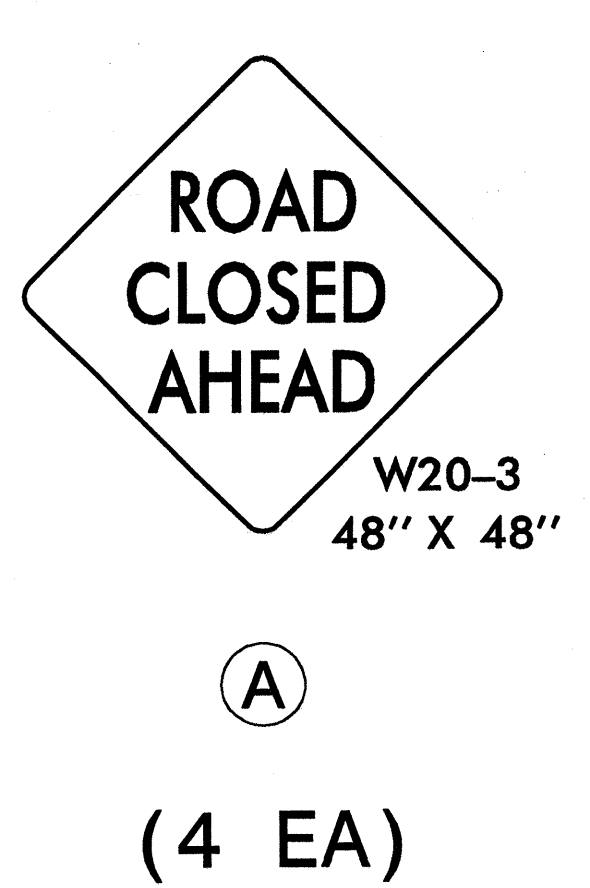
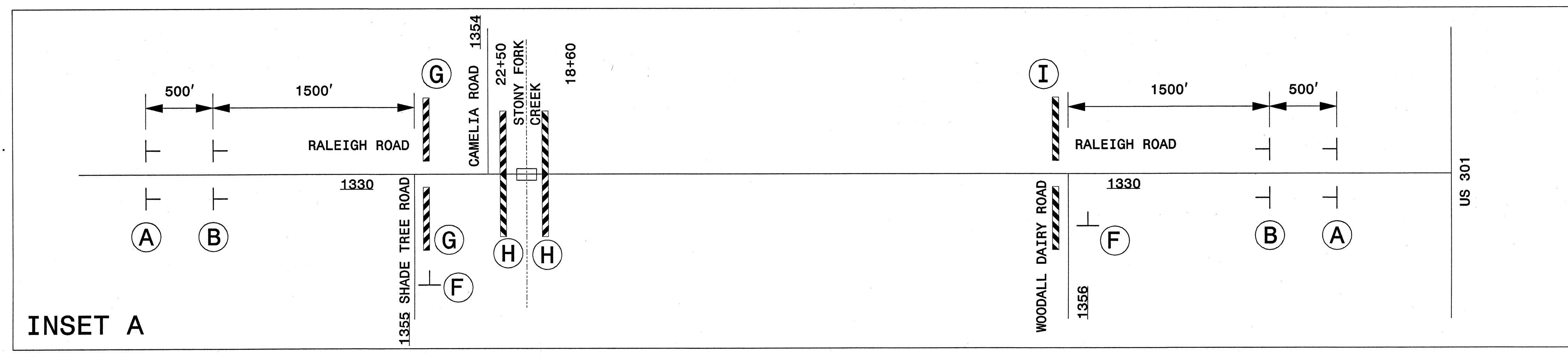
**RAMEY KEMP ASSOCIATES, INC.**  
 Transportation Engineers  
 888 Farrington Place, Suite 100  
 Raleigh, North Carolina 27609  
 919-872-8116 Tel. 919-878-8416 Fax.  
 www.rameykemp.com

APPROVED: *WJH* DATE: 11/12



## OFF-SITE DETOUR

SCALE: NONE		REVISIONS
DATE: 11/12		
DEVELOPED BY: NEB		
REVIEWED BY: WJH		
RKA PROJ. #: 12093	CADD FILE	



Prepared in the offices of:  
**RAMEY KEMP & ASSOCIATES, INC.**  
TRANSPORTATION ENGINEERS  
6800 Furlong Place, Suite 100  
Raleigh, North Carolina 27609  
919-872-9119 Tel. 919-878-5416 Fax  
www.rameykemp.com

APPROVED: *[Signature]* DATE: 11/29/12  
NORTH CAROLINA PROFESSIONAL SEAL 32396 ENGINEER WILLIAM J. HAMILTON

ROAD CLOSURE		
SCALE: NONE	Prepared For:	REVISIONS
DATE: 11/12		
DEVELOPED BY: NEB		
REVIEWED BY: WJH		
RKA PROJ. #: 12093	CADD FILE	

<p><b>SIGN NUMBER:</b> SD-1  <b>TYPE:</b> STATIONARY  <b>QUANTITY:</b> SEE PLANS</p> <p><b>SIGN WIDTH:</b> 4'-0"  <b>HEIGHT:</b> 1'-2"  <b>TOTAL AREA:</b> 4.7 Sq.Ft.</p> <p><b>BORDER TYPE:</b> INSET  <b>RECESS:</b> 0.5"  <b>WIDTH:</b> 0.5"  <b>RADII:</b> 2"</p> <p><b>NO. Z BARS:</b>  <b>LENGTH:</b></p>	<p><b>BACKG COLOR:</b> Fluorescent Orange  <b>COPY COLOR:</b> Black</p> <table border="1" style="width:100%; border-collapse: collapse;"> <thead> <tr> <th>SYMBOL</th> <th>X</th> <th>Y</th> <th>WID</th> <th>HT</th> </tr> </thead> <tbody> <tr><td> </td><td> </td><td> </td><td> </td><td> </td></tr> <tr><td> </td><td> </td><td> </td><td> </td><td> </td></tr> <tr><td> </td><td> </td><td> </td><td> </td><td> </td></tr> <tr><td> </td><td> </td><td> </td><td> </td><td> </td></tr> <tr><td> </td><td> </td><td> </td><td> </td><td> </td></tr> <tr><td> </td><td> </td><td> </td><td> </td><td> </td></tr> <tr><td> </td><td> </td><td> </td><td> </td><td> </td></tr> </tbody> </table> <p><b>MAT'L:</b> 0.080" (2.0 mm) ALUMINUM</p>	SYMBOL	X	Y	WID	HT																																				<p><b>DESIGN BY:</b> NE Burns  <b>PROJECT ID:</b> B-4558</p> <p><b>CHECKED BY:</b> WJ Hamilton  <b>DIV:</b> 4</p> <p style="text-align: right;"><b>DATE:</b> Jul 2, 2012</p> <div style="text-align: center; margin-top: 20px;"> <p style="margin-top: 10px;"> <b>BORDER</b> 5.35" 37.3" 5.35"  R=2"  TH=0.5"  IN=0.5"  Panel Style: Traffic Control.ssi  M.U.T.C.D.: 2009 Edition </p> </div> <p style="text-align: right; margin-top: 20px;">Spacing Factor is 1 unless specified otherwise</p>
SYMBOL	X	Y	WID	HT																																						
<p style="text-align: center;"><b>USE NOTES: 1,2</b></p> <ol style="list-style-type: none"> <li>1. Legend and border shall be direct applied black non-reflective sheeting.</li> <li>2. Background shall be NC GRADE B fluorescent orange retroreflective sheeting.</li> </ol>																																										

**LETTER POSITIONS**

Letter locations are panel edge to lower left corner												Series/Size
R	A	L	E	I	G	H		R	D			Text Length
5.4	9.3	14	17.9	21.9	24	28.5	31.9	34.9	39.3			C 2000 37.3

FILENAME: B-4558\_TC\_TMP\_SD-1

NORTH CAROLINA D.O.T. SIGN DETAIL

Prepared in the offices of:

**RAMEY KEMP & ASSOCIATES, INC.**  
Transportation Engineers  
3008 Farrington Place, Suite 100  
Raleigh, North Carolina 27609  
919-872-6119 Tel. 919-878-6416 Fax.  
www.rameykemp.com

<b>APPROVED:</b>	<b>DATE:</b> 11/12	<b>SPECIAL SIGN DESIGN</b>	
	<b>SCALE:</b> NONE	Prepared For:	<b>REVISIONS</b>
	<b>DATE:</b> 11/12		
	<b>DEVELOPED BY:</b> NEB		
	<b>REVIEWED BY:</b> WJH		
<b>RKA PROJ. #:</b> 12093	<b>CADD FILE</b>		