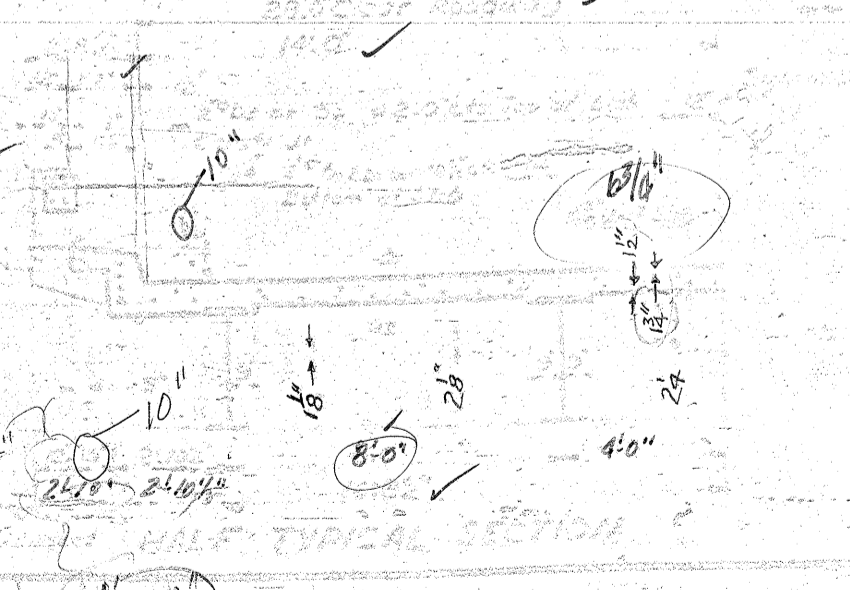
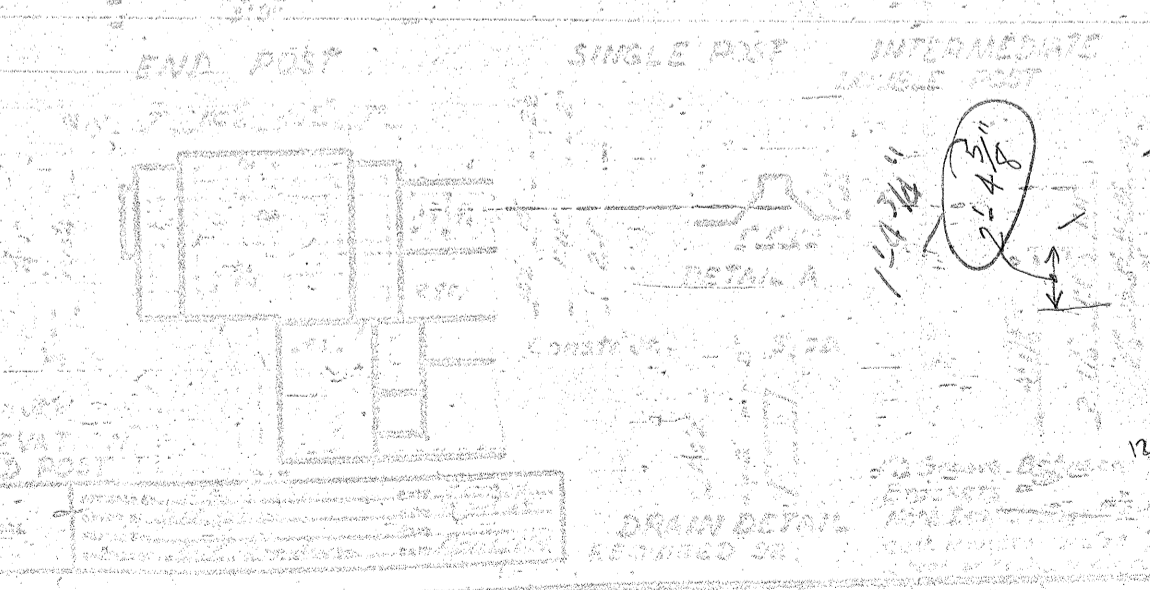
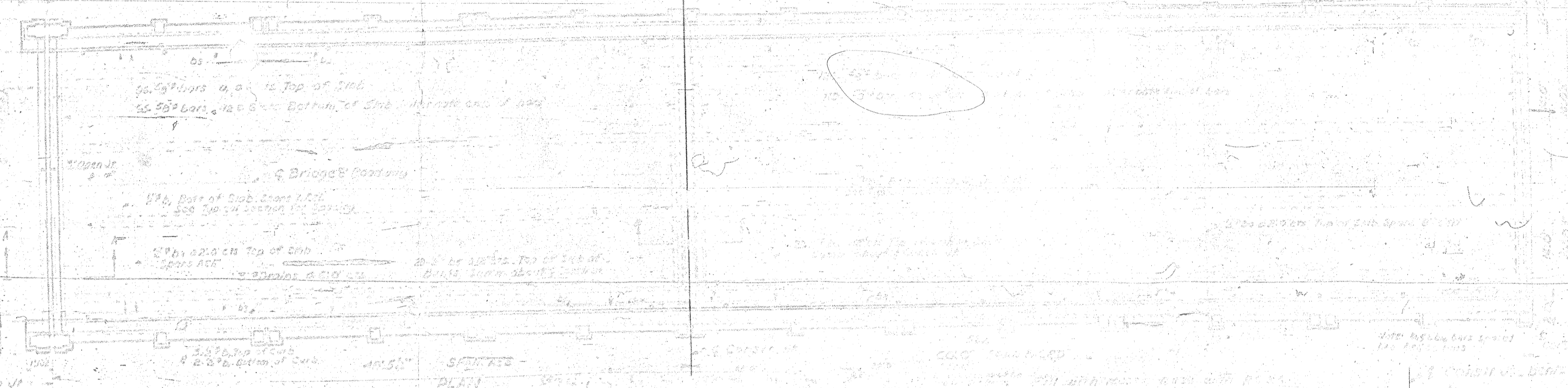
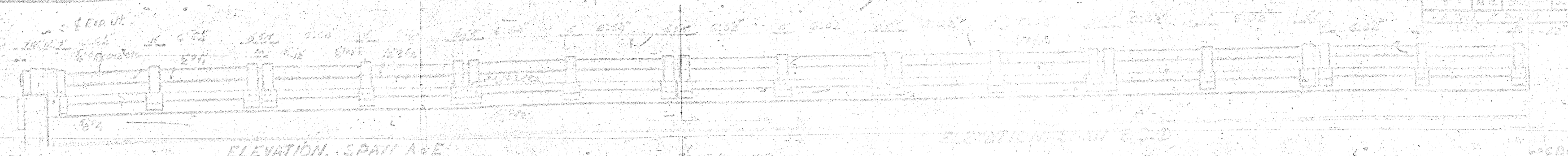


#0129

177600

SECOND COPY
SPECIMEN 1981-1982

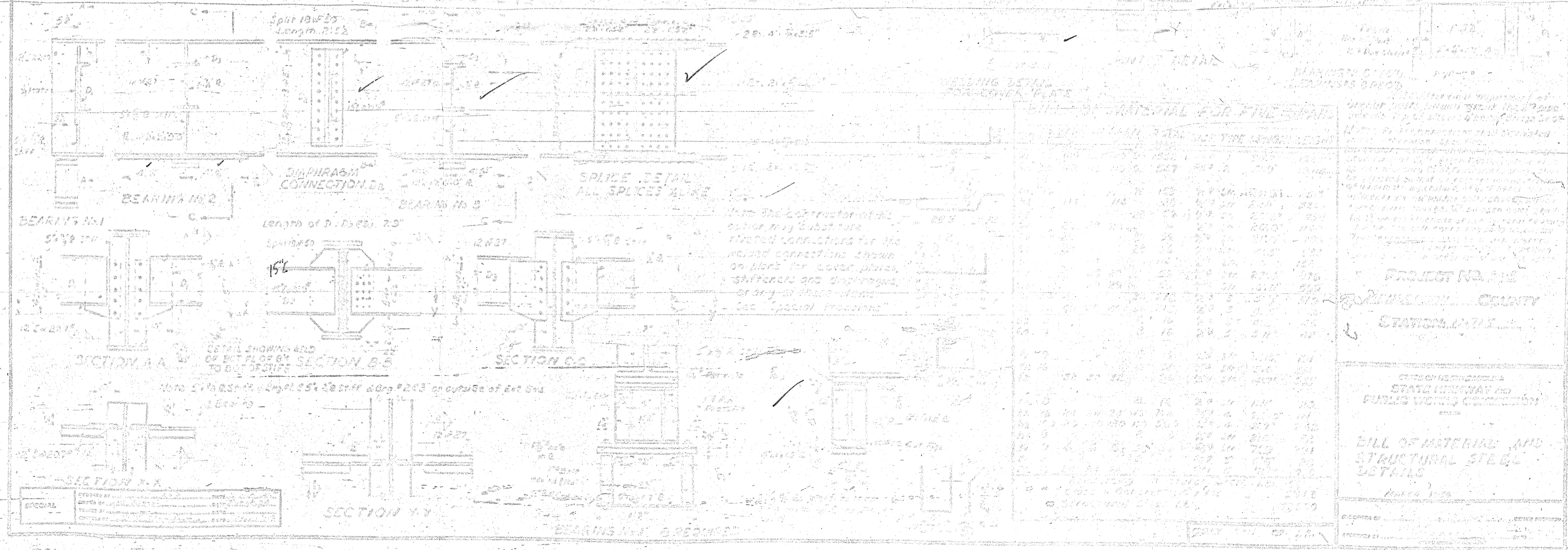
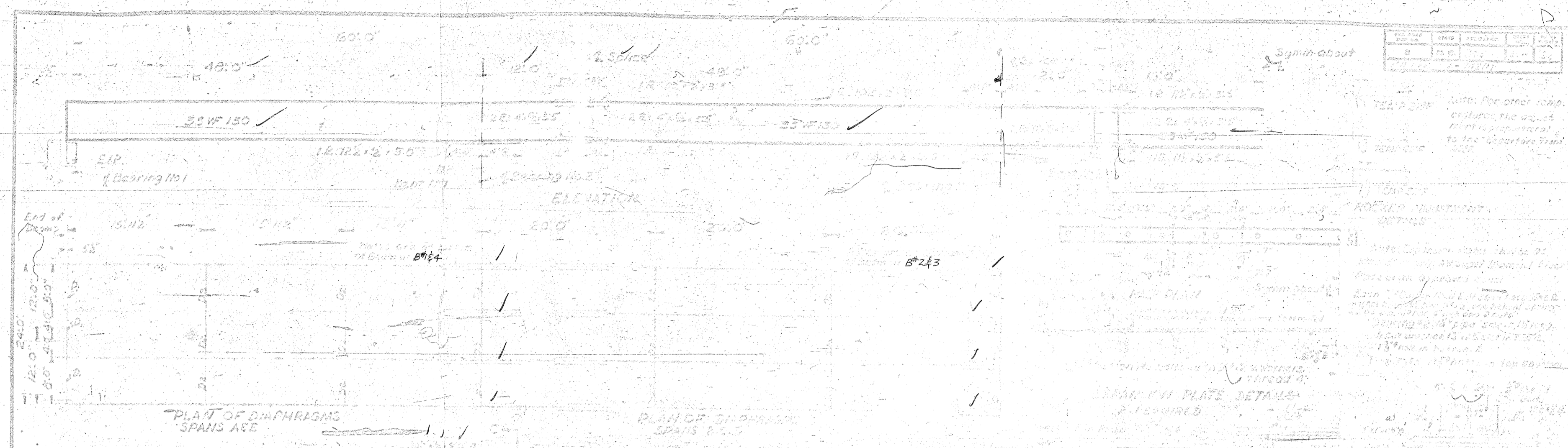
15-11-11



NO.	DATE	BY	REVISION
1	11-11-11	J.M.C.	DESIGN

DESIGNED AND
 SUPERSTRUCTURE
 JAN 1911

SECOND CYCLE BRIDGE
 INSPECTION 1942-1943



MATERIAL FOR FINE SHEAR		MATERIAL FOR FINE SHEAR	
ITEM	QUANTITY	ITEM	QUANTITY
1/2" PL	100.00	1/2" PL	100.00
3/4" PL	200.00	3/4" PL	200.00
1" PL	300.00	1" PL	300.00
2" PL	400.00	2" PL	400.00
3" PL	500.00	3" PL	500.00
4" PL	600.00	4" PL	600.00
5" PL	700.00	5" PL	700.00
6" PL	800.00	6" PL	800.00
7" PL	900.00	7" PL	900.00
8" PL	1000.00	8" PL	1000.00

PROJECT NO. 101
STATION 10+11

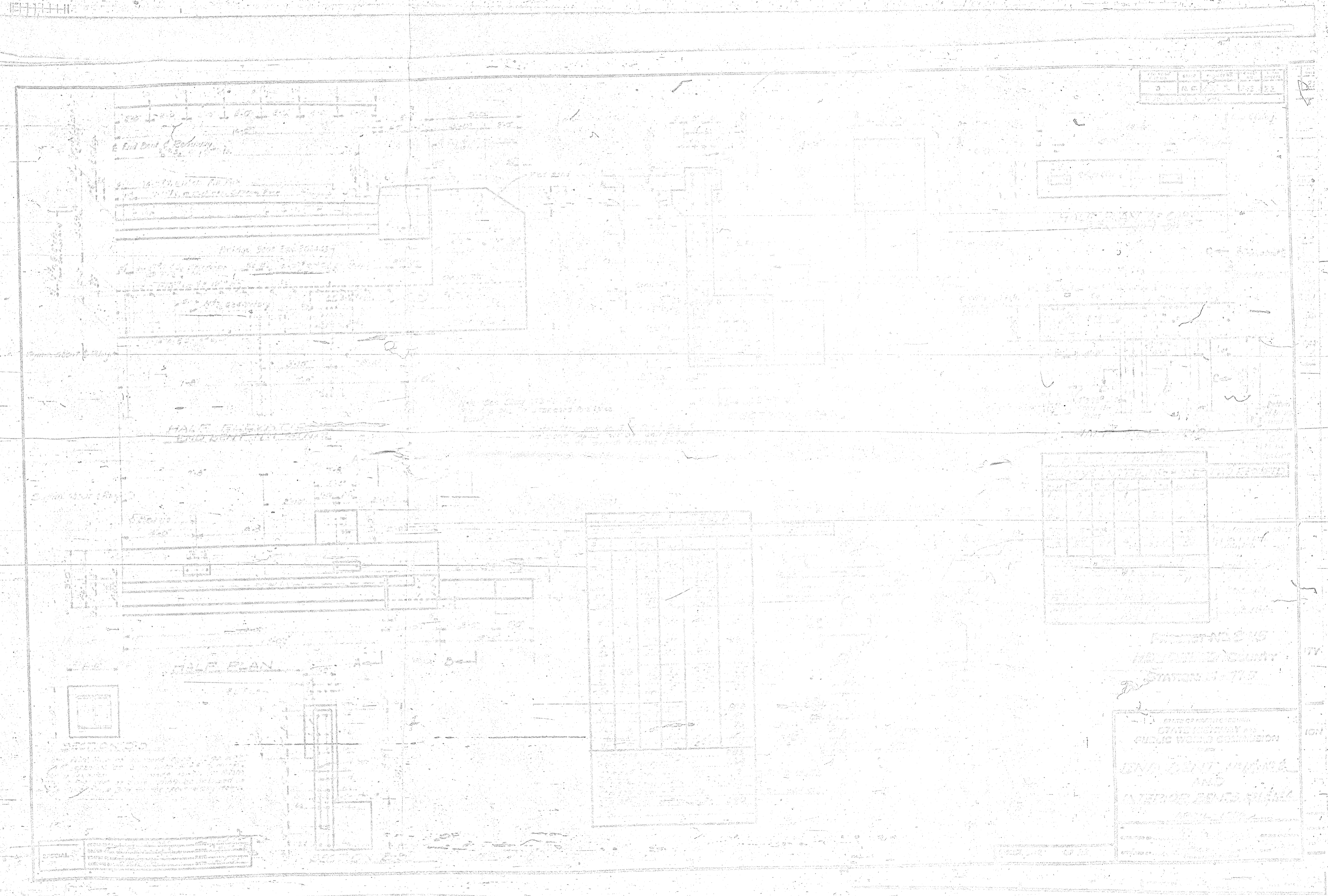
STATE HIGHWAY AND PUBLIC WORKS COMMISSION

BILL OF MATERIAL AND STRUCTURAL STEEL DETAILS

March 1982

SECOND BRIDGE INSPECTION 1981-1982

11111111



NO.	DATE	REVISION	BY
1			
2			
3			

HALF PLAN

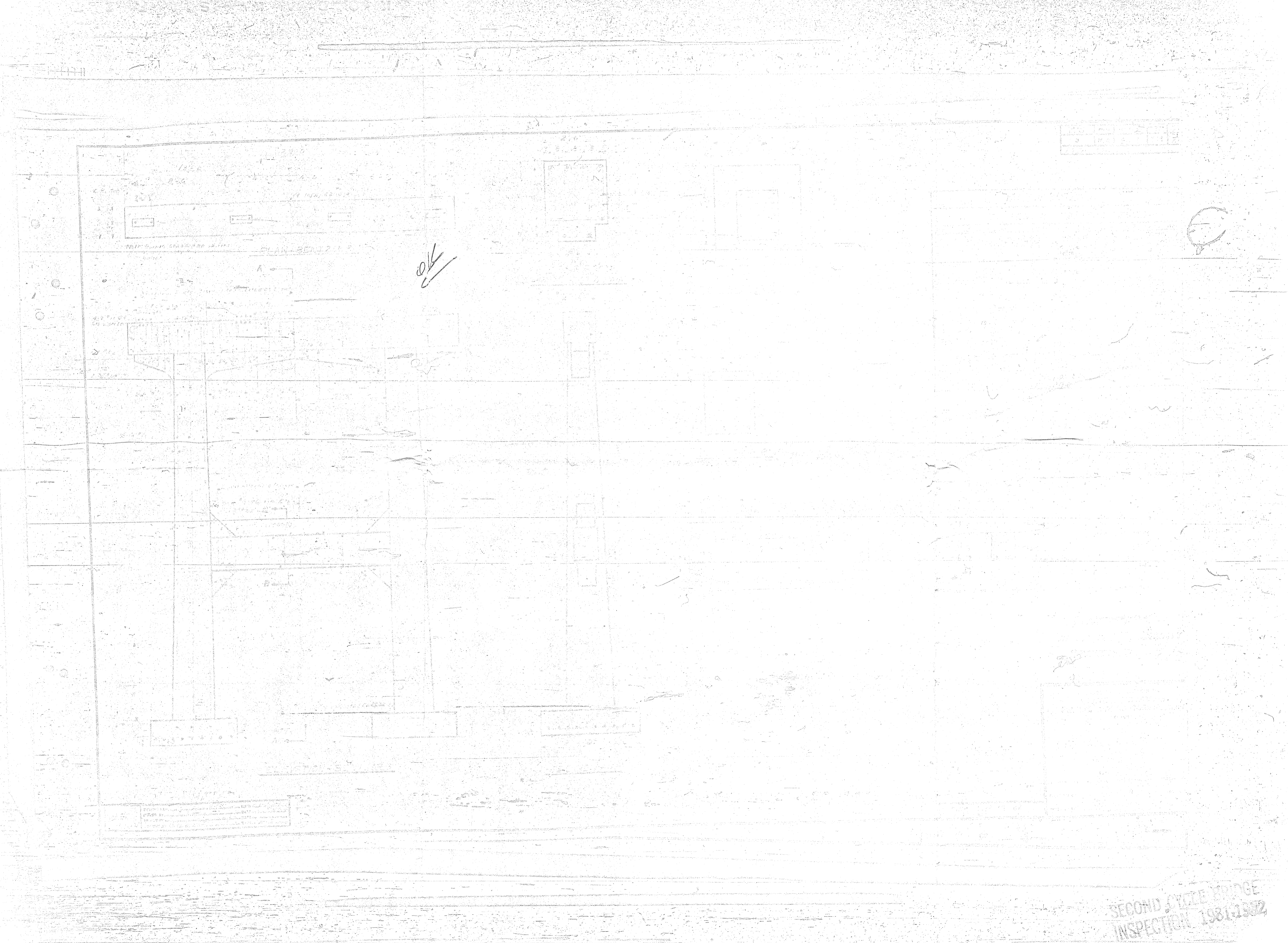
HALF PLAN

PROJECT NO. 215
 HIGHWAY 215
 STATION 1+75

STATE OF CALIFORNIA
 STATE HIGHWAY AND
 PUBLIC WORKS COMMISSION
 1981

END SHEET, INTERIOR
 AND
 INTERIOR DETAILS SHEET

SECOND CYCLE BRIDGE
 INSPECTION 1981-1982



SECOND CYCLE BRIDGE
INSPECTION 1981-1982