

I hereby certify that this structure was built according to revised plans.

Signed: *[Signature]* REGISTERED ENGINEER

TOTAL BILL OF MATERIALS			
Class	Quantity	Unit	Value
Concrete	1150	cu yd	1150
Steel	160	tons	160
Gravel	150	cu yd	150
Sand	150	cu yd	150
Silt	150	cu yd	150
Topsoil	150	cu yd	150
Rock	150	cu yd	150
Other			
<b>Total</b>			

Note: Plans, Sp. Cop. for S. B. Bridge and N. B. Bridge Maximum and Computed together (10/26/59) See Summary Sheet No. 202

Plans Checked 6-9-81

Scale	1" = 20'
Sheet No.	1-25

- NOTES**
- Loading: AASHTO H-20-S16-44 and DP2 Modified Loading for Military Vehicles.
  - Future Surfacing: 20 lbs. per sq. ft.
  - Roadway Width: 26'-0" curb to curb.
  - For other design data and general notes see General Notes Sheet.
  - Concrete surfaces shall be given a surface finish in accordance with the Specifications.
  - Water Surface Elevation of Flood of Record (July, 1915) controlled by backwater from French Broad River.
  - The contractor will be required to drive one 12 DP23 steel test pile, 20' long in place of Bent 2. The test pile shall be paid for as linear foot of 12 DP23 Steel Pile. The order lengths for all piles shall be given after the test pile has been driven.
  - All piles at End Bents shall be driven through the roadway fill.
  - All piles shall be driven to a minimum bearing capacity of 3 tons.
  - Soil bearing footing at Bent 1 is designed for a bearing pressure of 3 tons per sq. foot.
  - ⊙ Indicates 2 1/2" casing hole boring.
  - ⊚ Indicates ground water.
  - mark: 12 Spike in 8' Locust 150 ft. Bent Sta 1499+00 Elevation 2057.09

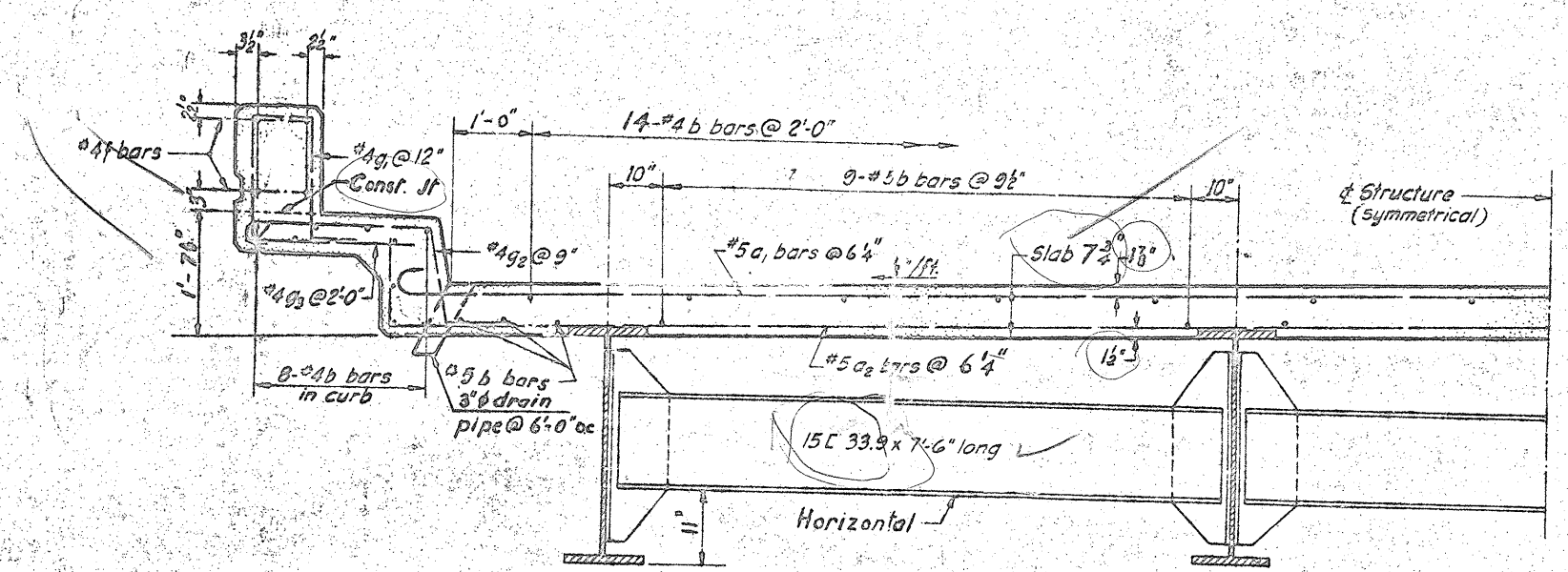
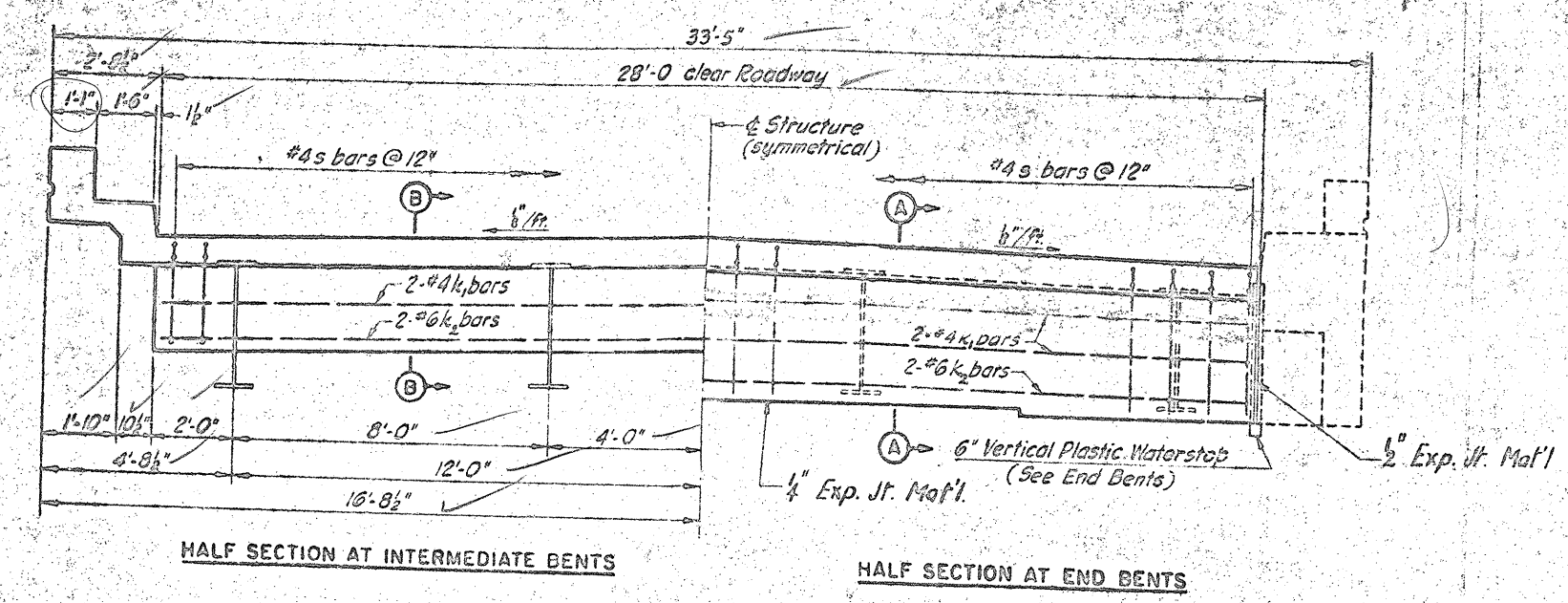
PROJECT NO. 8.19002  
 WENDESSON, BUNCOMEE COUNTY  
 STATION 1499+55.1  
 S. B. Bridge

STATE OF NORTH CAROLINA  
 STATE HIGHWAY COMMISSION

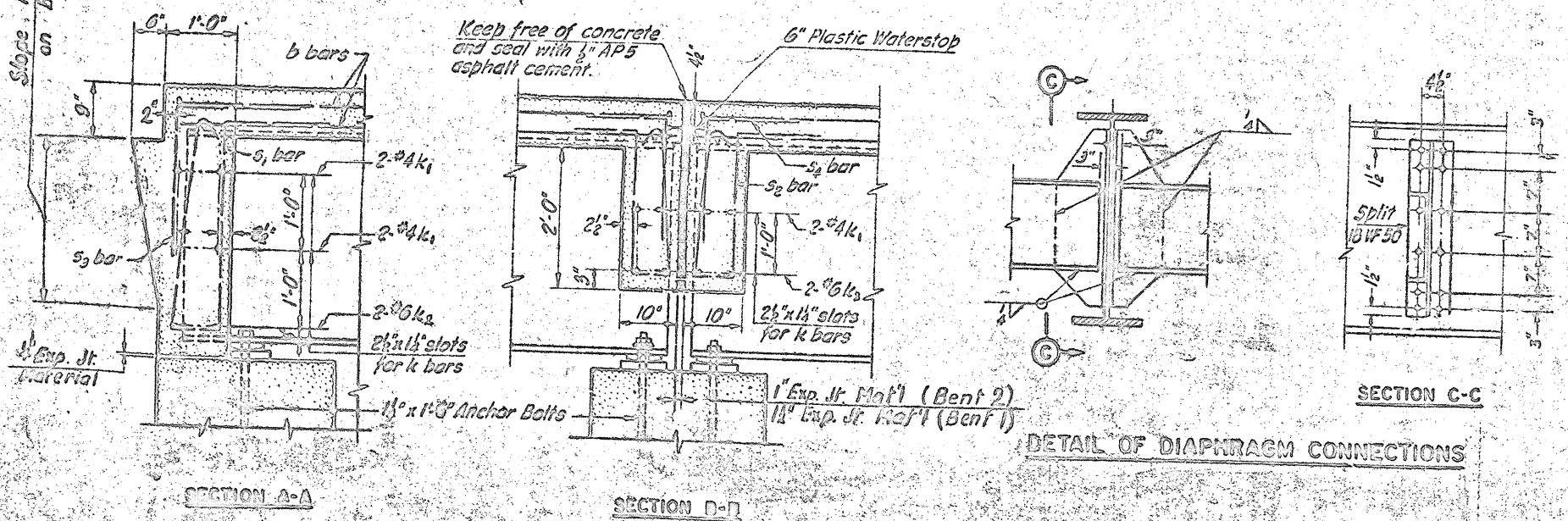
GENERAL DRAWING  
 BRIDGE OVER CAME GREEN  
 ON PROPOSED  
 SOUTH CAROLINA ROUTE



208

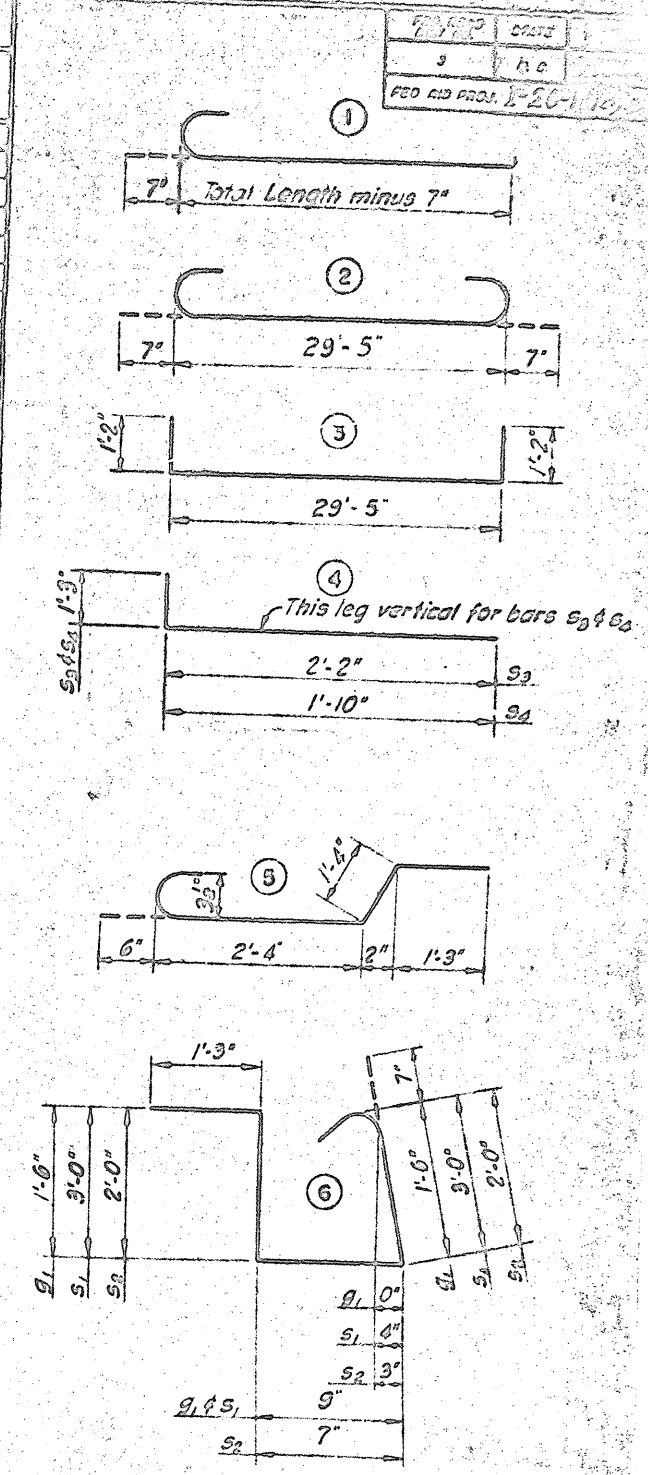


Note: In lieu of the welding procedure for shop and field welds indicated for the intermediate diaphragm connections, the contractor may, at his option, shop weld the connector plates to the beam webs and field weld the channels to the connector plates. Special care in handling the beams must be observed if connector plates are shop welded to the beam webs.



BILL OF MATERIALS - 2 SPANS

BAR	NUMBER OF BARS			TOTAL	SIZE	TYPE	LENGTH	WEIGHT
	SPAN A	SPAN D	SPAN C					
a <sub>1</sub>	124	124	124	374	5	2	30-7	11,930
a <sub>2</sub>	123	125	123	371	5	3	31-9	12,306
a <sub>3</sub>	10	—	10	20	5	str	27-0	577
b <sub>1</sub>	66	—	66	132	6	str	34-0	4,600
b <sub>2</sub>	32	—	32	64	4	str	32-6	1,309
b <sub>3</sub>	—	60	—	60	5	str	33-4	2,223
b <sub>4</sub>	28	—	28	56	4	str	33-0	1,850
b <sub>5</sub>	—	60	—	60	4	str	33-1	1,925
f <sub>1</sub>	16	—	16	32	4	str	32-6	695
f <sub>2</sub>	—	16	—	16	4	str	33-1	354
g <sub>1</sub>	130	132	130	392	4	6	5-7	1,961
g <sub>2</sub>	172	176	172	520	4	5	5-5	1,893
g <sub>3</sub>	66	60	66	200	2	str	2-4	311
k <sub>1</sub>	6	4	6	16	2	str	27-7	294
k <sub>2</sub>	4	4	4	12	6	str	27-7	497
s <sub>1</sub>	28	—	28	56	4	6	8-7	318
s <sub>2</sub>	28	56	28	112	4	6	6-5	400
s <sub>3</sub>	28	—	28	56	4	4	3-5	128
s <sub>4</sub>	28	56	28	112	4	4	3-1	231

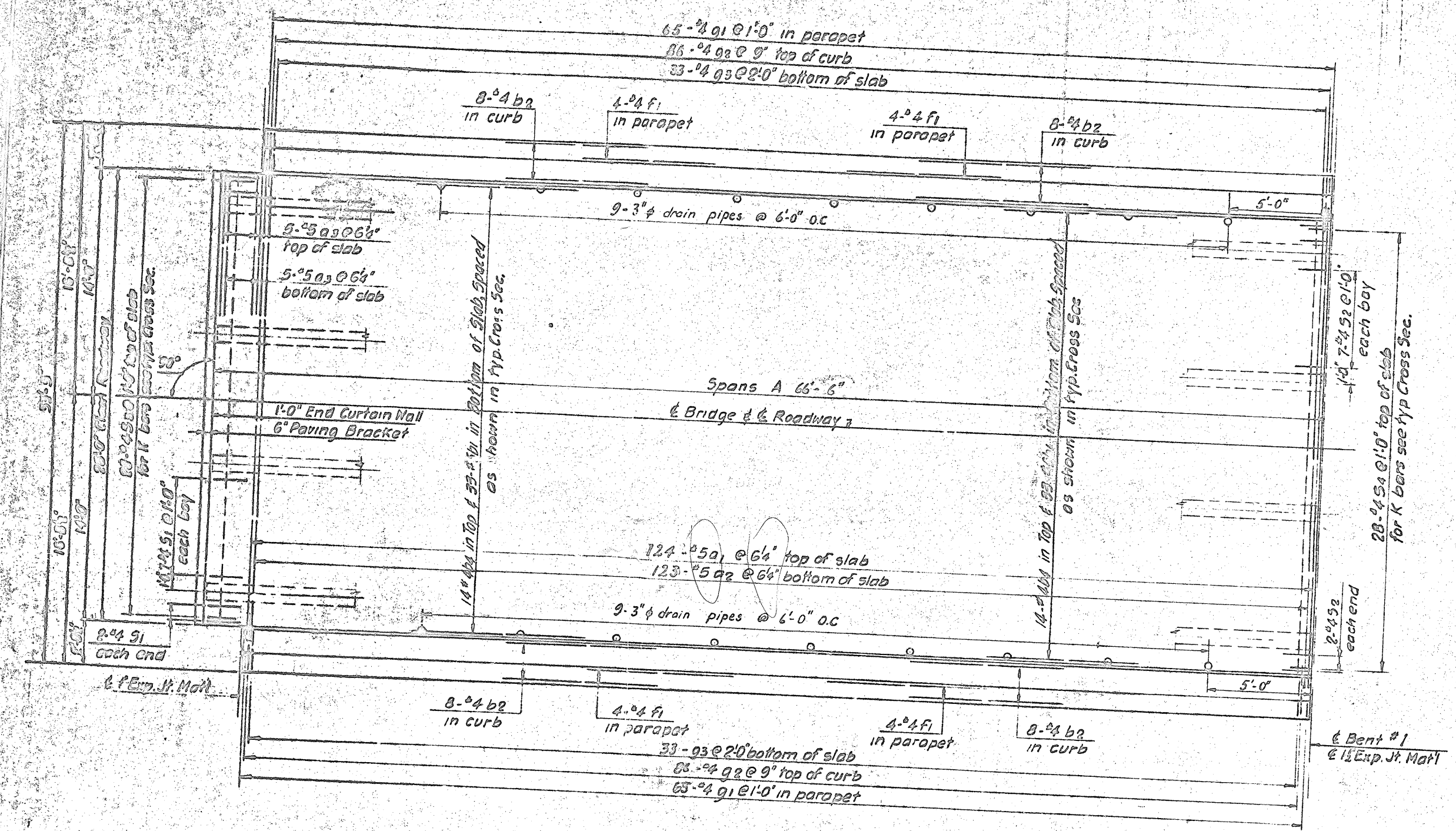


	Southbound Structure	Northbound Structure
Reinforcing Steel	42,900 lbs	42,900 lbs
Class "A" Concrete	106.0 cu. yds.	106.0 cu. yds.
Structural Steel	100,100 lbs.	100,100 lbs.
Metal Rails	530.0 Lin. Ft.	530.0 Lin. Ft.

PROJECT NO. 0.10002  
 Henderson - Buncombe County  
 STATION 1499 + 55  
 N.B. or S.B. Bridge

STATE OF NORTH CAROLINA  
 STATE HIGHWAY COMMISSION  
 SUPERSTRUCTURE  
 CROSS SECTIONS





PLAN

PROJECT NO. 219002  
 HENDERSON-DUNCOMBE COUNTY  
 STATION 1499+55L  
 S.D. or N.B. BRIDGE

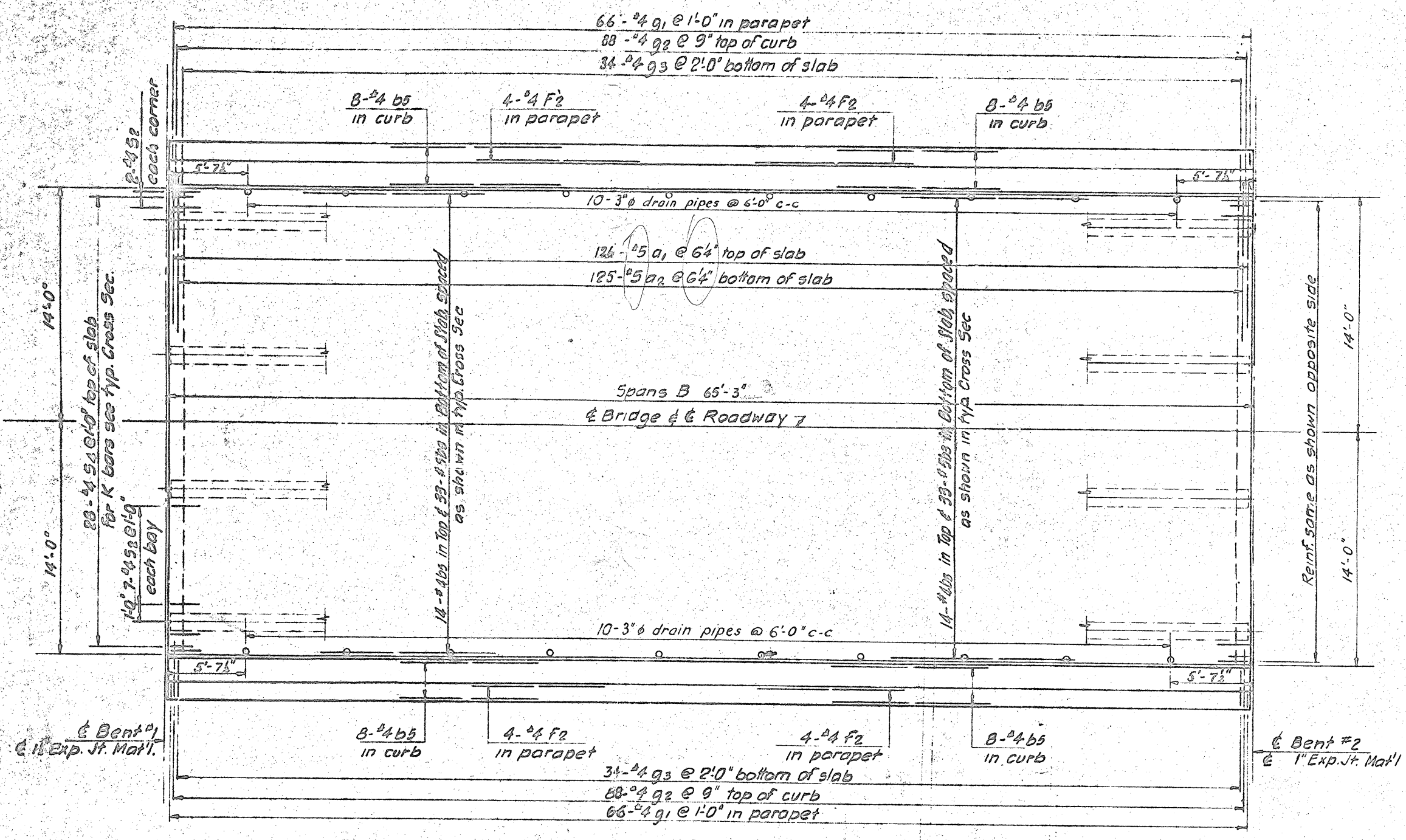
DATE	BY	CHKD	APP'D

STATE OF NORTH CAROLINA  
 STATE HIGHWAY COMMISSION  
 DESIGN

SUPERSTRUCTURE  
 SPAN A



NO. 100  
 DATE 1/1/51  
 REVISIONS



PLAN

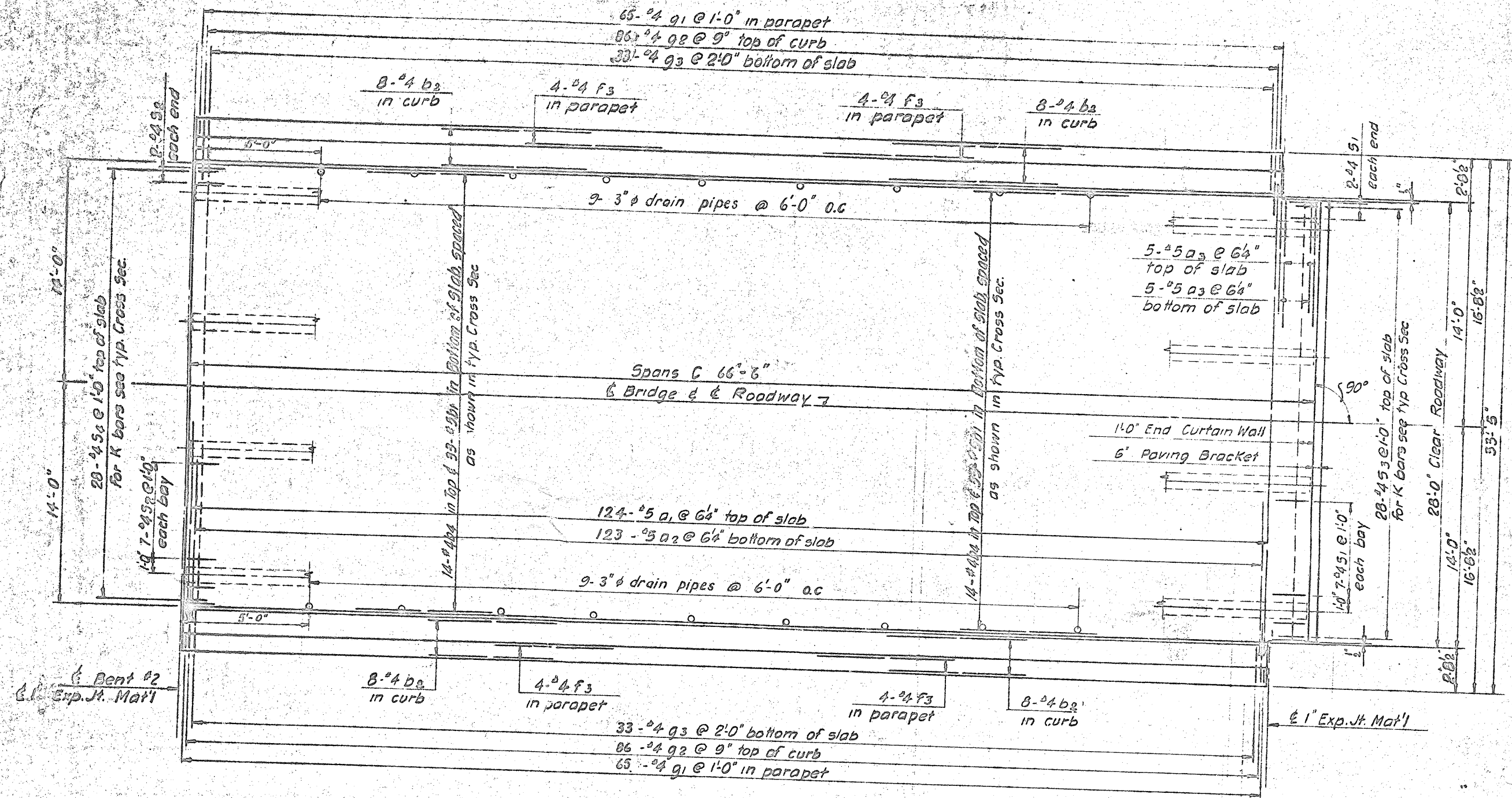
PROJECT NO. 312002  
 HENDERSON-BUNCOMBE COUNTY  
 STATION 1499+551  
 S.B. or N.B. BRIDGE

DATE	BY	CHKD	APP'D

STATE OF NORTH CAROLINA  
 STATE HIGHWAY COMMISSION  
 DIVISION

SUPERSTRUCTURE  
 SPAN D





PLAN

PROJECT NO. 819002  
 HENDERSON-BURDEN COUNTY  
 STATION 1422 + 55 L  
 S.D. or N.B. BRIDGE

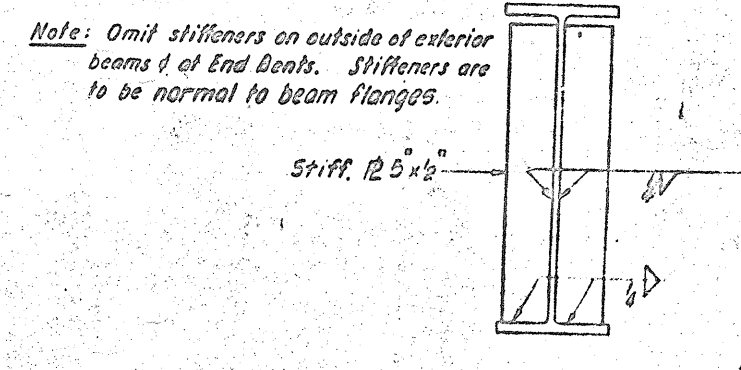
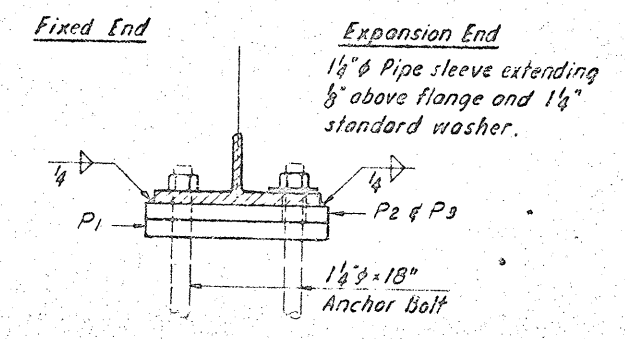
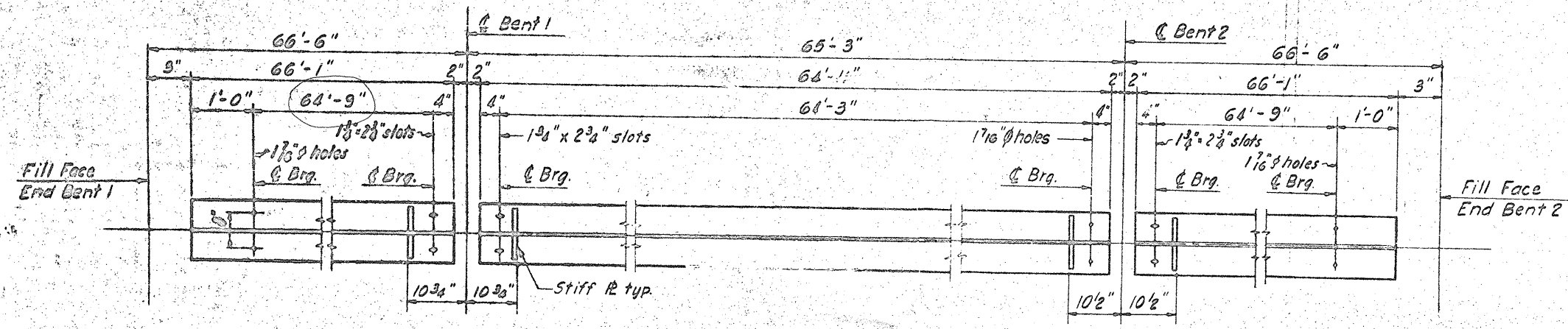
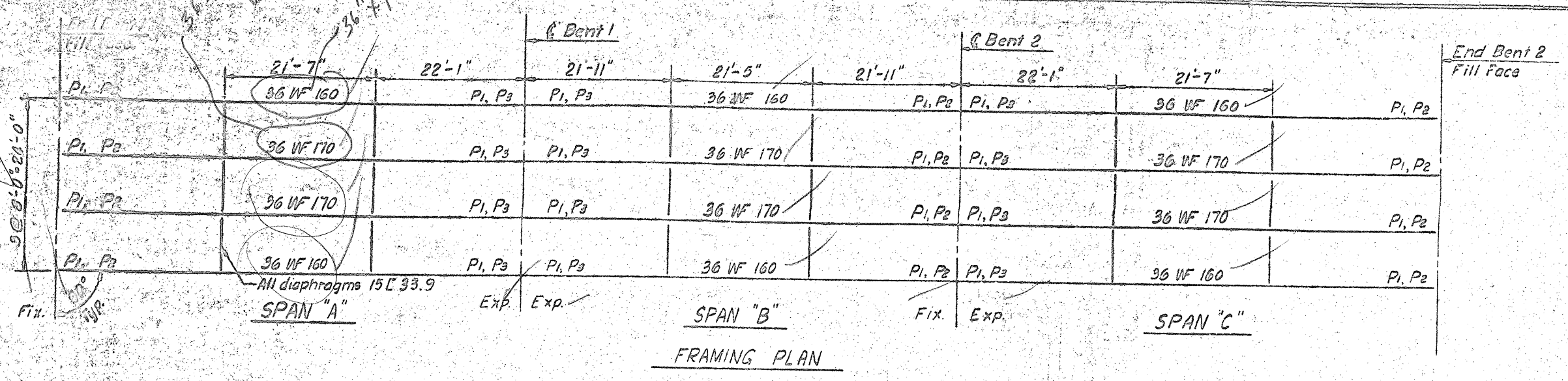
DATE	BY	CHKD	APP'D

STATE OF NORTH CAROLINA  
 STATE HIGHWAY COMMISSION  
 Raleigh

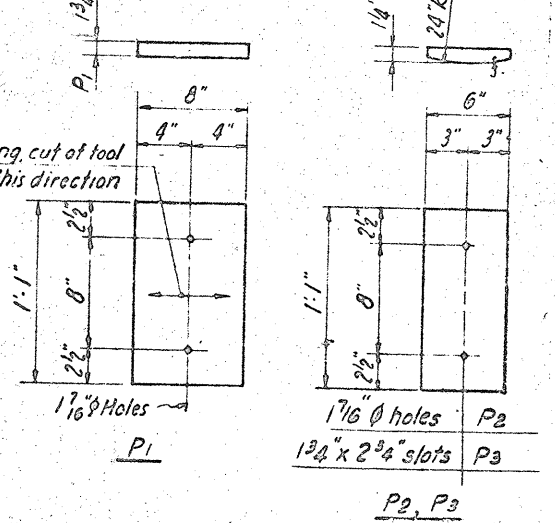
SUPERSTRUCTURE  
 SPAN C



FED AID PROJ. 1-00-11010

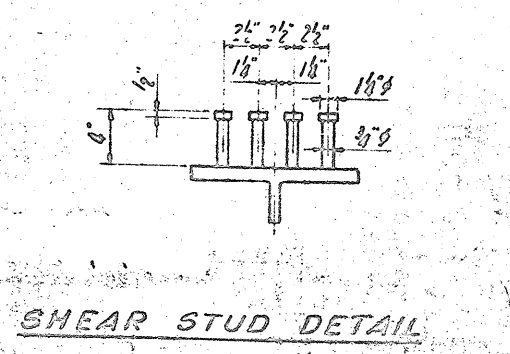
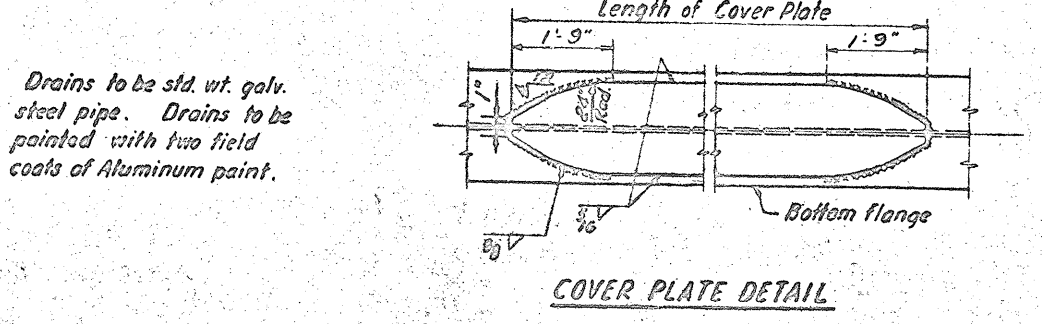
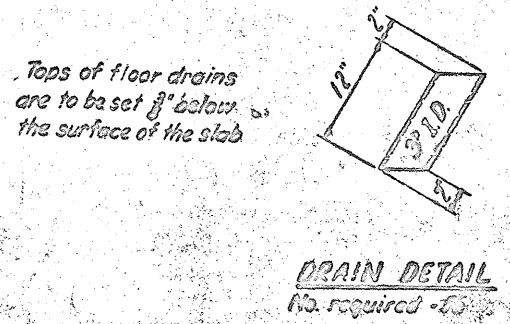


Span	Ext. Dim.	Int. Dim.	No. Shear Studs
Span A	1'-0"	64'-9"	4"
	12 @ 6'-6"	10 @ 7'-6"	9 @ 9'-7"
Span B	4"	64'-3"	4"
	12 @ 6'-6"	10 @ 7'-6"	9 @ 9'-7"



	Ext. Dim.	Int. Dim.
Steel	1 1/2"	1 1/2"
Concrete	1 1/2"	1 1/2"
Total Defl.	1 1/2"	1 1/2"
Vertical Curve	1 1/2"	1 1/2"

Span	Ext. Beam	Int. Beam
Span A	10 1/2" x 34" x 48'-9"	10 1/2" x 34" x 48'-0"
Span B	10 1/2" x 34" x 48'-9"	10 1/2" x 34" x 47'-6"



Note: All beams and cover plates for this structure may be either A-36 or A-572 steel in extreme fiber of structural steel = 18,000 p.s.i. See Standard Notes sheet for further requirements.

PROJECT NO. 819002  
 HENDERSON-BUNCOMB COUNTY  
 STATION 1499 + 55 L  
 N.B. or S.B. Bridge

STATE OF NORTH CAROLINA  
 STATE HIGHWAY COMMISSION  
 STRUCTURAL STEEL