

STATE OF NORTH CAROLINA
DIVISION OF HIGHWAYS



STATE PROJECT REFERENCE NO. C-4901B	SHEET NO. TMP-1
---	--------------------

**PLAN FOR PROPOSED
MAINTENANCE OF TRAFFIC**

DAVIDSON COUNTY

REV. SEPTEMBER 2011

ROADWAY STANDARD DRAWINGS

THE FOLLOWING ROADWAY STANDARDS AS APPEAR IN "ROADWAY STANDARD DRAWINGS" - PROJECT SERVICES UNIT - N.C. DEPARTMENT OF TRANSPORTATION - RALEIGH, N.C., DATED JANUARY 2012 ARE APPLICABLE TO THIS PROJECT AND BY REFERENCE HEREBY ARE CONSIDERED A PART OF THESE PLANS:

STD. NO.	TITLE
904.50	MOUNTING OF TYPE D,E,& F SIGNS
1101.02	TEMPORARY LANE CLOSURES
1101.03	TEMPORARY ROAD CLOSURES
1101.04	TEMPORARY SHOULDER CLOSURES
1101.05	WORK ZONE VEHICLE ACCESSES
1101.06	WARNING SIGNS FOR BLASTING ZONES
1101.11	TRAFFIC CONTROL DESIGN TABLES
1110.01	STATIONARY WORK ZONE SIGNS
1110.02	PORTABLE WORK ZONE SIGNS
1115.01	FLASHING ARROW BOARDS
1130.01	DRUMS
1135.01	CONES
1145.01	BARRICADES
1150.01	FLAGGING DEVICES
1180.01	SKINNY-DRUM
1205.01	PAVEMENT MARKINGS - LINE TYPES AND OFFSETS
1205.02	PAVEMENT MARKINGS - TWO LANE AND MULTILANE ROADWAYS
1205.12	PAVEMENT MARKINGS - BRIDGES
1250.01	PAVEMENT MARKER SPACING
1251.01	RAISED PAVEMENT MARKERS - (PERMANENT AND TEMPORARY)
1261.01	GUARDRAIL & BARRIER DELINEATOR - INSTALLATION SPACING
1261.02	GUARDRAIL & BARRIER DELINEATOR - TYPES AND MOUNTING
1262.01	GUARDRAIL END DELINEATION
1264.01	OBJECT MARKERS - TYPES
1264.02	OBJECT MARKERS - INSTALLATION

INDEX OF SHEETS

SHEET NO.	TITLE
TMP-1	LIST OF APPLICABLE ROADWAY STANDARD DRAWINGS, LEGEND AND INDEX OF SHEETS
TMP-2	PROJECT NOTES AND PHASING
TMP-3 THRU TMP-4	PHASE I
TMP-5	OFFSITE DETOUR
TMP-6 THRU TMP-7	PHASE II
TMP-8	SPECIAL SIGN DESIGN

LEGEND

- GENERAL**
- DIRECTION OF TRAFFIC FLOW
 - NORTH ARROW
 - PROPOSED PVMT. EXIST. PVMT.
 - WORK AREA
 - REMOVAL OF EXISTING PAVEMENT
- TRAFFIC CONTROL DEVICES**
- TYPE I BARRICADE
 - TYPE II BARRICADE
 - TYPE III BARRICADE
 - CONE
 - DRUM SKINNY DRUM
 - FLASHING ARROW PANEL (TYPE C)
 - STATIONARY SIGN
 - PORTABLE SIGN
 - STATIONARY OR PORTABLE SIGN
 - CRASH CUSHION
 - CHANGEABLE MESSAGE SIGN
 - TRUCK MOUNTED IMPACT ATTENUATOR (TMIA)
 - POLICE
 - FLAGGER

C-4901B

TIP PROJECT:

DCN 0259DEL P10c2

\$\$\$\$\$SYTIME\$\$\$\$\$
\$\$\$\$\$DCN\$\$\$\$\$
\$\$\$\$\$SERNAME\$\$\$\$\$

CH ENGINEERING
3220 GLEN ROYAL RD. RALEIGH, NC 27617
TELE 919.788.0224 FAX 919.788.0232
NC LICENSE #P-0189

APPROVED: _____ DATE: _____	PLAN PREPARED BY: CH ENGINEERING, PLLC
 SEAL THOMAS R. HEPLER 1.7.13	STATE TRAFFIC MANAGEMENT ENGINEER
	T.R. HEPLER, PE TRAFFIC CONTROL PROJECT ENGINEER
	TRAFFIC CONTROL PROJECT DESIGN ENGINEER
	T.L. HEPLER TRAFFIC CONTROL DESIGN ENGINEER / TECHNICIAN

PROJECT NOTES

PROJ. REFERENCE NO.	SHEET NO.
C-4901B	TMP-2

GENERAL NOTES

PHASING

CHANGES MAY BE REQUIRED WHEN PHYSICAL DIMENSIONS IN THE DETAIL DRAWINGS, STANDARD DETAILS, AND ROADWAY DETAILS ARE NOT ATTAINABLE TO MEET FIELD CONDITIONS OR RESULT IN DUPLICATE OR UNDESIRED OVERLAPPING OF DEVICES. MODIFICATION MAY INCLUDE: MOVING, SUPPLEMENTING, COVERING, OR REMOVAL OF DEVICES AS DIRECTED BY THE ENGINEER.

THE FOLLOWING GENERAL NOTES APPLY AT ALL TIMES FOR THE DURATION OF THE CONSTRUCTION PROJECT EXCEPT WHEN OTHERWISE NOTED IN THE PLAN OR DIRECTED BY THE ENGINEER.

TIME RESTRICTIONS

A) DO NOT CLOSE OR NARROW TRAVEL LANES AS FOLLOWS:

ROAD NAME	DAY AND TIME RESTRICTIONS
SR 2024	TO THE EXTENT POSSIBLE LIMIT CLOSURE OF LANES TO PERIODS OF MINIMAL OR NO ACTIVITY AT THE ADJACENT QUARRY OR ASPHALT PLAN AS COORDINATED WITH THE RESPECTIVE OPERATION

LANE AND SHOULDER CLOSURE REQUIREMENTS

- B) REMOVE LANE CLOSURE DEVICES FROM THE LANE WHEN WORK IS NOT BEING PERFORMED BEHIND THE LANE CLOSURE OR WHEN A LANE CLOSURE IS NO LONGER NEEDED OR AS DIRECTED BY THE ENGINEER.
- C) WHEN PERSONNEL AND/OR EQUIPMENT ARE WORKING WITHIN 15 FT OF AN OPEN TRAVEL LANE, CLOSE THE NEAREST OPEN SHOULDER USING ROADWAY STANDARD DRAWING NO. 1101.04 UNLESS THE WORK AREA IS PROTECTED BY BARRIER OR GUARDRAIL OR A LANE CLOSURE IS INSTALLED.
- D) WHEN PERSONNEL AND/OR EQUIPMENT ARE WORKING ON THE SHOULDER ADJACENT TO AN UNDIVIDED FACILITY AND WITHIN 5 FT OF AN OPEN TRAVEL LANE, CLOSE THE NEAREST OPEN TRAVEL LANE USING ROADWAY STANDARD DRAWING NO. 1101.02 UNLESS THE WORK AREA IS PROTECTED BY BARRIER OR GUARDRAIL.

WHEN PERSONNEL AND/OR EQUIPMENT ARE WORKING ON THE SHOULDER ADJACENT TO A DIVIDED FACILITY AND WITHIN 10 FT OF AN OPEN TRAVEL LANE, CLOSE THE NEAREST OPEN TRAVEL LANE USING ROADWAY STANDARD DRAWING NO. 1101.02 UNLESS THE WORK AREA IS PROTECTED BY BARRIER OR GUARDRAIL.

- E) WHEN PERSONNEL AND/OR EQUIPMENT ARE WORKING WITHIN A LANE OF TRAVEL OF AN UNDIVIDED OR DIVIDED FACILITY, CLOSE THE LANE ACCORDING TO THE TRAFFIC CONTROL PLANS, ROADWAY STANDARD DRAWINGS, OR AS DIRECTED BY THE ENGINEER. CONDUCT THE WORK SO THAT ALL PERSONNEL AND/OR EQUIPMENT REMAIN WITHIN THE CLOSED TRAVEL LANE.

PAVEMENT EDGE DROP OFF REQUIREMENTS

- F) BACKFILL AT A 6:1 SLOPE UP TO THE EDGE AND ELEVATION OF EXISTING PAVEMENT IN AREAS ADJACENT TO AN OPENED TRAVEL LANE THAT HAS AN EDGE OF PAVEMENT DROP-OFF AS FOLLOWS:

BACKFILL DROP-OFFS THAT EXCEED 2 INCHES ON ROADWAYS WITH POSTED SPEED LIMITS OF 45 MPH OR GREATER.

BACKFILL DROP-OFFS THAT EXCEED 3 INCHES ON ROADWAYS WITH POSTED SPEED LIMITS LESS THAN 45 MPH.

BACKFILL WITH SUITABLE COMPACTED MATERIAL, AS APPROVED BY THE ENGINEER, AT NO EXPENSE TO THE DEPARTMENT.

- G) DO NOT EXCEED A DIFFERENCE OF 2 INCHES IN ELEVATION BETWEEN OPEN LANES OF TRAFFIC FOR NOMINAL LIFTS OF 1.5 INCHES. INSTALL ADVANCE WARNING "UNEVEN LANES" SIGNS (W8-11) IN ADVANCE AND A MINIMUM OF EVERY HALF MILE THROUGHOUT THE UNEVEN AREA.

TRAFFIC PATTERN ALTERATIONS

- H) NOTIFY THE ENGINEER TWENTY ONE (21) CALENDAR DAYS PRIOR TO ANY TRAFFIC PATTERN ALTERATION.

SIGNING

- I) INSTALL ADVANCE WORK ZONE WARNING SIGNS WHEN WORK IS WITHIN 40 FT FROM THE EDGE OF TRAVEL LANE AND NO MORE THAN THREE (3) DAYS PRIOR TO THE BEGINNING OF CONSTRUCTION.

- J) PROVIDE SIGNING AND DEVICES REQUIRED TO CLOSE THE ROAD ACCORDING TO THE ROADWAY STANDARD DRAWINGS AND TRAFFIC CONTROL PLANS.

PROVIDE SIGNING REQUIRED FOR THE OFF-SITE DETOUR ROUTE AS SHOWN IN THE TRAFFIC CONTROL PLANS.

- K) COVER OR REMOVE ALL SIGNS AND DEVICES REQUIRED TO CLOSE THE ROAD WHEN ROAD CLOSURE IS NOT IN OPERATION.

COVER OR REMOVE ALL SIGNS REQUIRED FOR THE OFF-SITE DETOUR WHEN THE DETOUR IS NOT IN OPERATION.

- L) ENSURE ALL NECESSARY SIGNING IS IN PLACE PRIOR TO ALTERING ANY TRAFFIC PATTERN.

- M) INSTALL BLACK ON ORANGE "DIP" SIGNS (W8-2) AND/OR "BUMP" SIGNS (W8-1) IN ADVANCE OF THE UNEVEN AREA, OR AS DIRECTED BY THE ENGINEER.

TRAFFIC CONTROL DEVICES

- N) WHEN LANE CLOSURES ARE NOT IN EFFECT SPACE CHANNELIZING DEVICES IN WORK AREAS NO GREATER IN FEET THAN TWICE THE POSTED SPEED LIMIT (MPH) EXCEPT, 10 FT ON-CENTER IN RADII, AND 3 FT OFF THE EDGE OF AN OPEN TRAVELWAY. REFER TO STANDARD SPECIFICATIONS FOR ROADS AND STRUCTURES SECTIONS 1130 (DRUMS), 1135 (CONES) AND 1180 (SKINNY DRUMS) FOR ADDITIONAL REQUIREMENTS.

- O) PLACE TYPE III BARRICADES, WITH "ROAD CLOSED" SIGN R11-2 ATTACHED, OF SUFFICIENT LENGTH TO CLOSE ENTIRE ROADWAY.

- P) INSTALL TEMPORARY PAVEMENT MARKINGS AND TEMPORARY PAVEMENT MARKERS ON INTERIM LAYERS OF PAVEMENT AS FOLLOWS:

ROAD NAME	MARKING	MARKER
SR 2024	PAINT	NONE

- Q) PLACE ONE APPLICATION OF PAINT FOR TEMPORARY TRAFFIC PATTERNS. PLACE A SECOND APPLICATION OF PAINT SIX (6) MONTHS AFTER THE INITIAL APPLICATION AND EVERY SIX MONTHS AS DIRECTED BY THE ENGINEER.

- R) TIE PROPOSED PAVEMENT MARKING LINES TO EXISTING PAVEMENT MARKING LINES.

- S) REMOVE/REPLACE ANY CONFLICTING/DAMAGED PAVEMENT MARKINGS AND MARKERS BY THE END OF EACH DAY'S OPERATION.

TMP STRATEGY: THE APPROACH TO THE IMPLEMENTATION OF THIS PROJECT WILL BE TO CONSTRUCT AS MUCH OF THE NEW ROADWAY AS PRACTICAL WHILE MAINTAINING TRAFFIC ON THE EXISTING ROADWAYS. IN ORDER TO CONSTRUCT THE TIE-INS WITH THE EXISTING ROADWAY, TRAFFIC WILL BE DETOURED OFF-SITE ONTO LOWER LAKE ROAD. ACCESS TO THE QUARRY AND ASPHALT PLANT WILL BE MAINTAINED THROUGHOUT CONSTRUCTION. ONCE THE TIE-INS ARE COMPLETE AND THE PAVEMENT, BRIDGE AND ALL APPURTENANCES ARE COMPLETE TRAFFIC WILL BE ROUTED INTO ITS PERMANENT PATTERN ONTO UPPER LAKE ROAD AND THE CLOSING OF LOWER LAKE ROAD GRADE CROSSING COMPLETED.

NOTES: COORDINATE SCHEDULED WORK WITHIN THE RAILROAD RIGHT OF WAY WITH NORFOLK SOUTHERN AND NCRR, SPECIFICALLY ANY WORK OR ACTIVITY THAT OCCURS IN PROXIMITY TO THE TRACKS. OPERATIONS WITHIN THE RAILROAD RIGHT OF WAY SHALL BE CONTROLLED BY NORFOLK SOUTHERN AND NCRR AND CONSEQUENT DIRECTIONS FROM THESE ENTITIES SHALL SUPERCEDE THIS TRAFFIC CONTROL PLAN. CONTRACTOR MUST HAVE CURRENT ROADWAY WORKER PROTECTION CERTIFICATION ISSUED VIA A RAILROAD AUTHORITY. AT A MINIMUM ANY CONSTRUCTION ACTIVITY WITHIN 25' OF THE TRACKS SHALL BE CONTROLLED BY A CERTIFIED FLAGGER PROVIDED BY THE RAILROAD AT THE CONTRACTOR'S EXPENSE.

COORDINATE WITH PRIVATE UTILITY OWNERS TO SCHEDULE RELOCATION OF CONFLICTING UTILITIES BY OTHERS PRIOR TO BEGINNING PROPOSED WORK THAT MAY IMPACT RESPECTIVE UTILITIES.

USING INCIDENTAL STONE AS NECESSARY, MAINTAIN VEHICULAR ACCESS TO ALL DRIVEWAYS DURING THE LIFE OF THE CONTRACT UNLESS OTHERWISE NOTED IN THE PHASING OR DIRECTED BY THE ENGINEER.

COORDINATE WITH THE UTILITY CONTRACTOR AND WITH THE ENGINEER IN CHARGE TO PROVIDE ANY TRAFFIC CONTROL NEEDED TO PERFORM THE PROPOSED UTILITY CONSTRUCTION ON THIS PROJECT.

RETURN TRAFFIC TO THE EXISTING PATTERN AT THE END OF EACH WORK DAY UNLESS OTHERWISE STATED IN THE PHASING OR DIRECTED BY THE ENGINEER.

COMPLETE ANY PROPOSED OR TEMPORARY WIDENING IN SUCH A MANNER THAT PONDING OF WATER WILL NOT OCCUR IN THE TRAVEL LANE.

PHASE I:

STEP 1: PRIOR TO BEGINNING ANY CONSTRUCTION OPERATIONS, PLACE WORK ZONE ADVANCED WARNING SIGNS ON -L- (SR 2024 UPPER LAKE ROAD) IN ACCORDANCE WITH NCDOT DETAIL DRAWING FOR TWO-WAY UNDIVIDED WORK ZONE SIGNS (RSD 1101.01)

STEP 2: AWAY FROM TRAFFIC, BEGIN CONSTRUCTION OF PROPOSED STRUCTURE AND PROPOSED -L- FROM *L- STA. 21+50+00 +/- -L- TO STA. 31+50+/- UP TO BUT NOT INCLUDING THE FINAL LAYER OF SURFACE COURSE. CONSTRUCT NEW ENTRANCE (DRV) AND CREATE TEMPORARY TIE TO *L- AT STATION 15+00 (SEE SHEET TCP-3 & 4). USE RSD 1101.04 FOR NECESSARY SHOULDER WORK CLOSURES.

INSTALL RELOCATED WATERLINE ALONG PROPOSED *L- FROM 31+00+/- TO 34+00+/- ,

PHASE II:

STEP 1: INSTALL DETOUR SIGNING AS SHOWN IN TCP 5 AND BARRICADES TYPE *B*, *C* AND *D*. CLOSE ROAD TO TRAFFIC BETWEEN 15+25+/- AND 32+75+/- .

ICT#1 * COMPLETE ROAD CLOSURE FOR OF *L- FOR COMPETION OF TIE-INS SHALL BE LIMITED TO 30 CONSEQUITIVE DAYS.

CONSTRUCT REMAINDER OF THE ROADWAY FROM *L- 13+90 TO STA. 21+50+00 +/- AND -L- STA. 31+50+/- TO 34+80 UP TO THE FINAL SURFACE COURSE. INSTALL TEMPORARY PAVEMENT MARKINGS. USING ROADWAY STANDARD DRAWING NO. 1101.02 (SHEET 1 OF 15) WHILE WEDGING EXISTING ROADWAY, CONSTRUCT THE TIES TO THE EXISTING ROADWAY AT EACH END AND MAINTAINING ACCESS TO THE MARTIN MARIETTA OPERATIONS AS COORDINATED WITH THE RESPECTIVE PLANT FACILITY. PERFORM THE FOLLOWING IN A CONTINUOUS MANNER.

STEP 2: OPEN ROADWAY TO TRAFFIC AND REMOVE DETOUR SIGNAGE AND BARRICADES.

STEP 3: USING ROADWAY STANDARD DRAWING NO. 1101.02 (SHEET 1 OF 15), PLACE FINAL SURFACE COURSE AND FINAL PAVEMENT MARKINGS.

STEP 4: REMOVE EXISTING ROADWAY BRIDGE AND RAILROAD CROSSING AS INDICATED ON THE PLANS.

STEP 5: REMOVE ALL REMAINING TRAFFIC CONTROL DEVICES

STEP 6: COORDINATE WITH PROJ. C-4901C PROCEED WITH CLOSURE OF EXISTING LOWER LAKE ROAD, UPON COMPLETION OF TURNER ROAD(SR 2005) GRADE SEPARATION.



CH ENGINEERING

3220 GLEN ROYAL RD. RALEIGH, NC 27617
TELE 919.788.0224 FAX 919.788.0232
NC LICENSE #P-0189

APPROVED: _____ DATE: _____

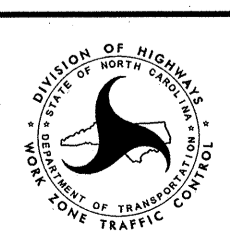
SEAL

NORTH CAROLINA
PROFESSIONAL
SEAL
10359
TODD R. METER

1-7-13

PROJECT NOTES

SCALE:	NONE
DATE:	01/04/13
DWG. BY:	TLH
DESIGN BY:	TLH
REVIEWED BY:	TRH



REVISIONS	

DCN 0259DEL_P10c2

SYSTEMS TIME\$\$\$\$\$
\$\$\$\$\$DCN\$\$\$\$\$
\$\$\$\$\$SERVNAME\$\$\$\$\$

0259DEL.P10c2

10

PHASE 1



PROJ. REFERENCE NO.	SHEET NO.
C-4901B	TMP-3

BEGIN TIP PROJECT C-4901B
POT STA. 13+90.00 -L-

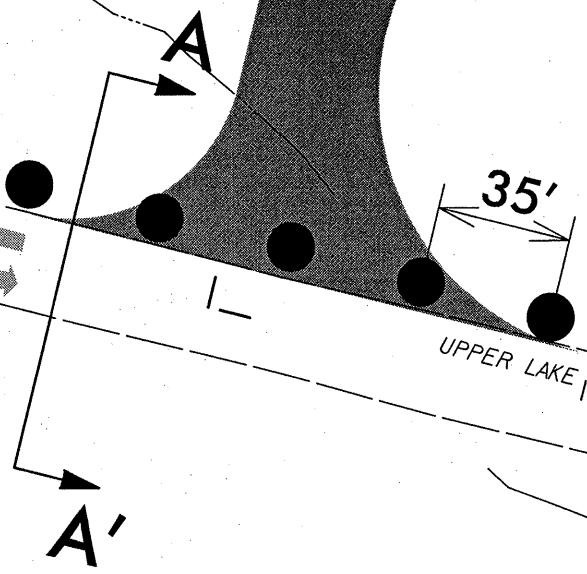
15

20

25

MARTIN MARIETTA MATERIALS INC
DB 892 PG 309

ASPHALT
PLANT

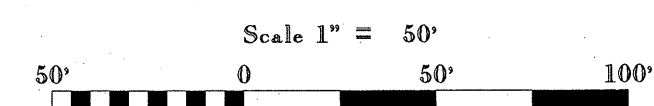
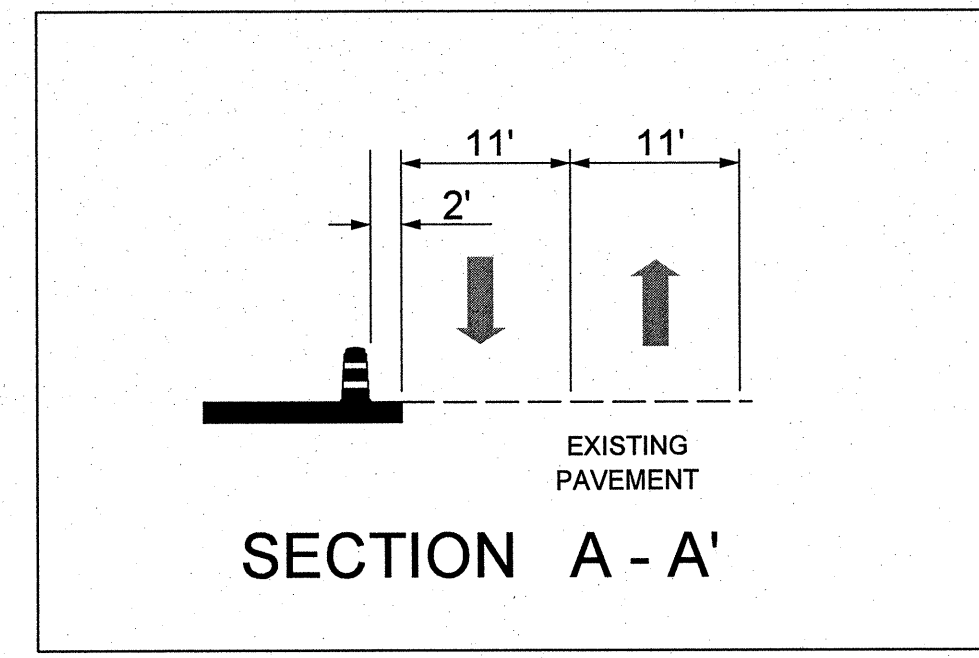


UPPER LAKE RD SR 2024 25' BST

SHLDR CLOSURE
RSD 1101.04

MARTIN MARIETTA MATERIALS INC
DB 892 PG 309

MARTIN MARIETTA MATERIALS INC
DB 892 PG 309



CH ENGINEERING
 3220 GLEN ROYAL RD. RALEIGH, NC 27617
 TELE 919.788.0224 FAX 919.788.0232
 NC LICENSE #P-0189

APPROVED: _____ DATE: _____

1-7-13

PHASE 1 DETAIL

SCALE: 1" = 50'
 DATE: 01/04/13
 DWG. BY: TLH
 DESIGN BY: TLH
 REVIEWED BY: TRH

REVISIONS

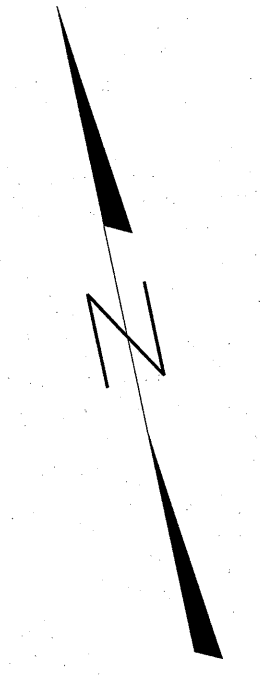
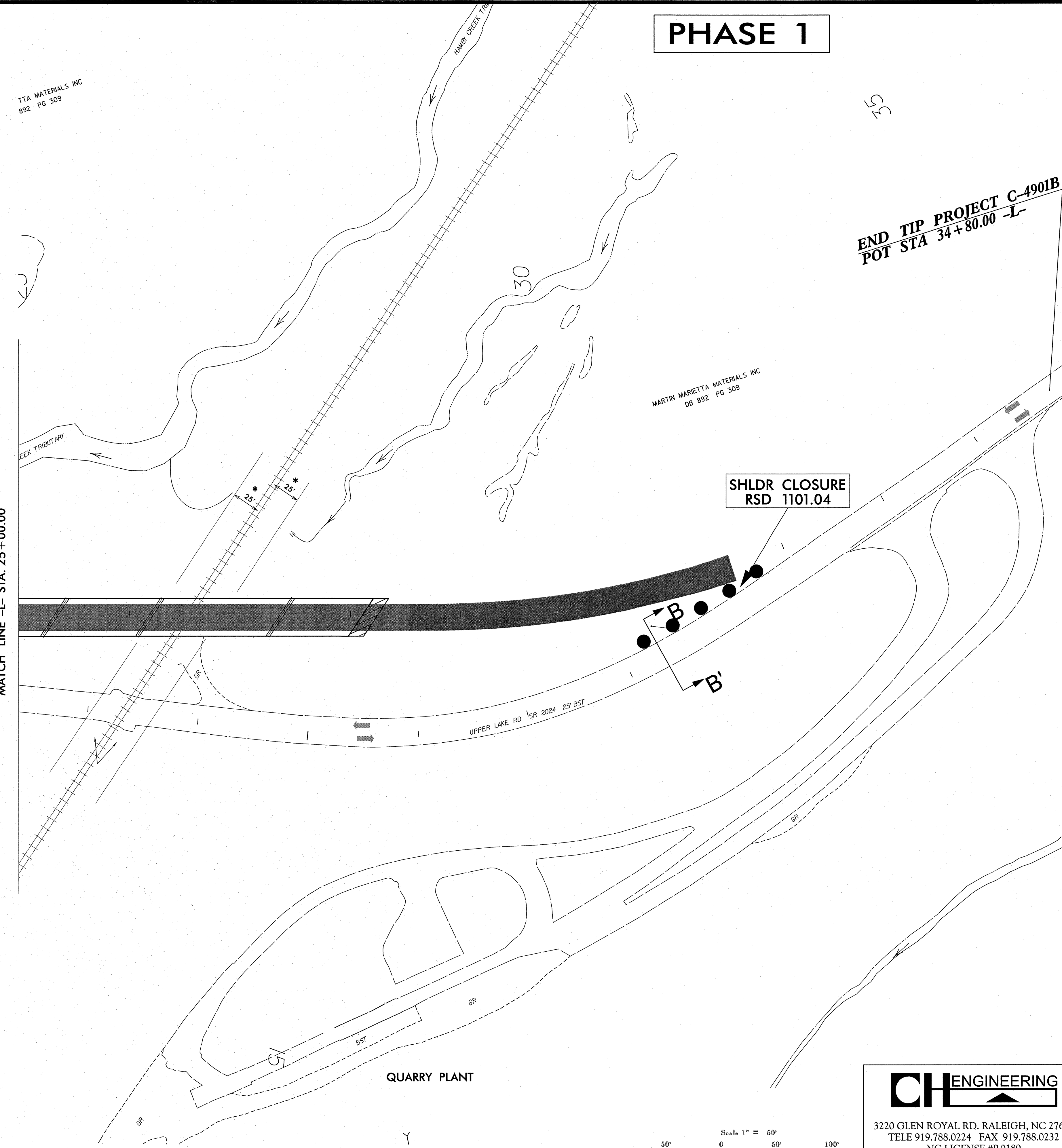
MATCH LINE -L- STA. 25+00.00

SYSTEMTIME:\$\$\$\$\$
DCN\$\$\$\$\$
\$\$\$\$\$SERNAME\$\$\$\$\$

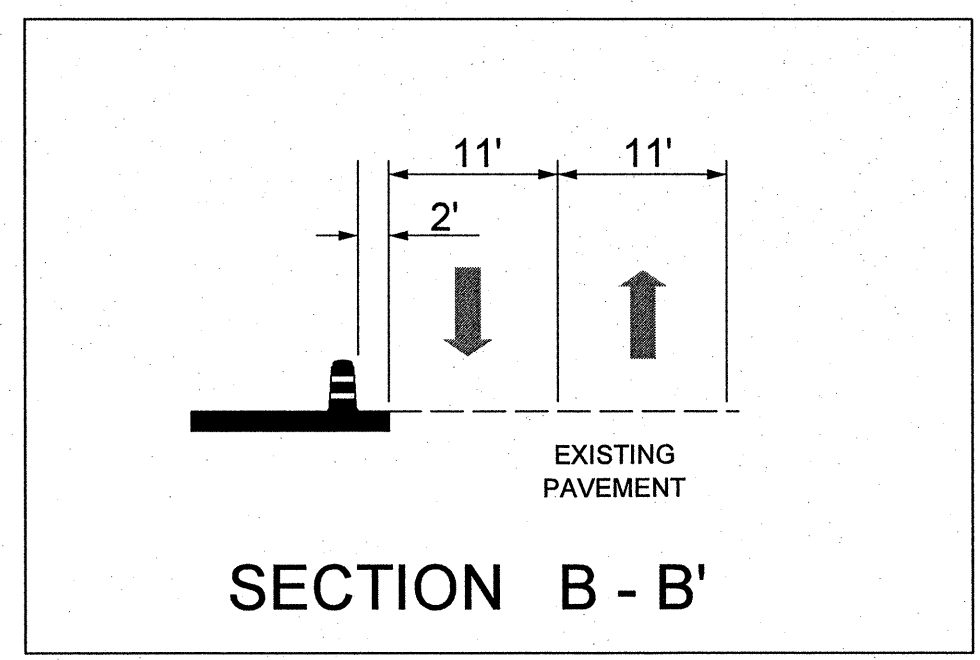


PROJ. REFERENCE NO.	SHEET NO.
C-4901B	TMP-4

PHASE 1

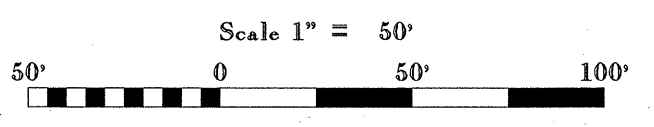


***NOTE:** CONSTRUCTION ACTIVITY WITHIN 25' OF TRACK MUST BE CONTROLLED BY RAILROAD AUTHORITIES



0259 DEL P10c2

SYSTEM TIME: 01/04/13 10:00 AM
 USER: TLH



CH ENGINEERING
 3220 GLEN ROYAL RD. RALEIGH, NC 27617
 TELE 919.788.0224 FAX 919.788.0232
 NC LICENSE #P-0189

APPROVED: _____ DATE: _____
 SEAL

 THOMAS R. MILLER
 1-7-13

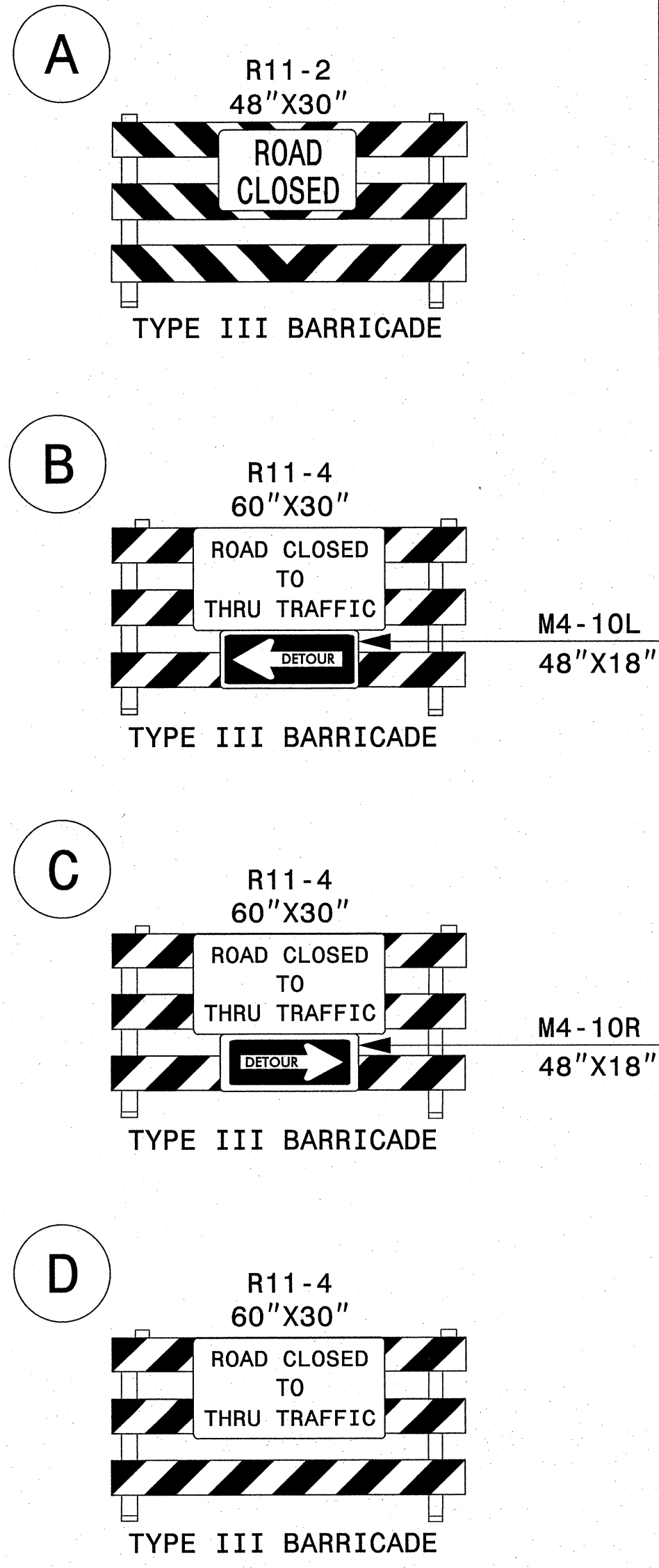
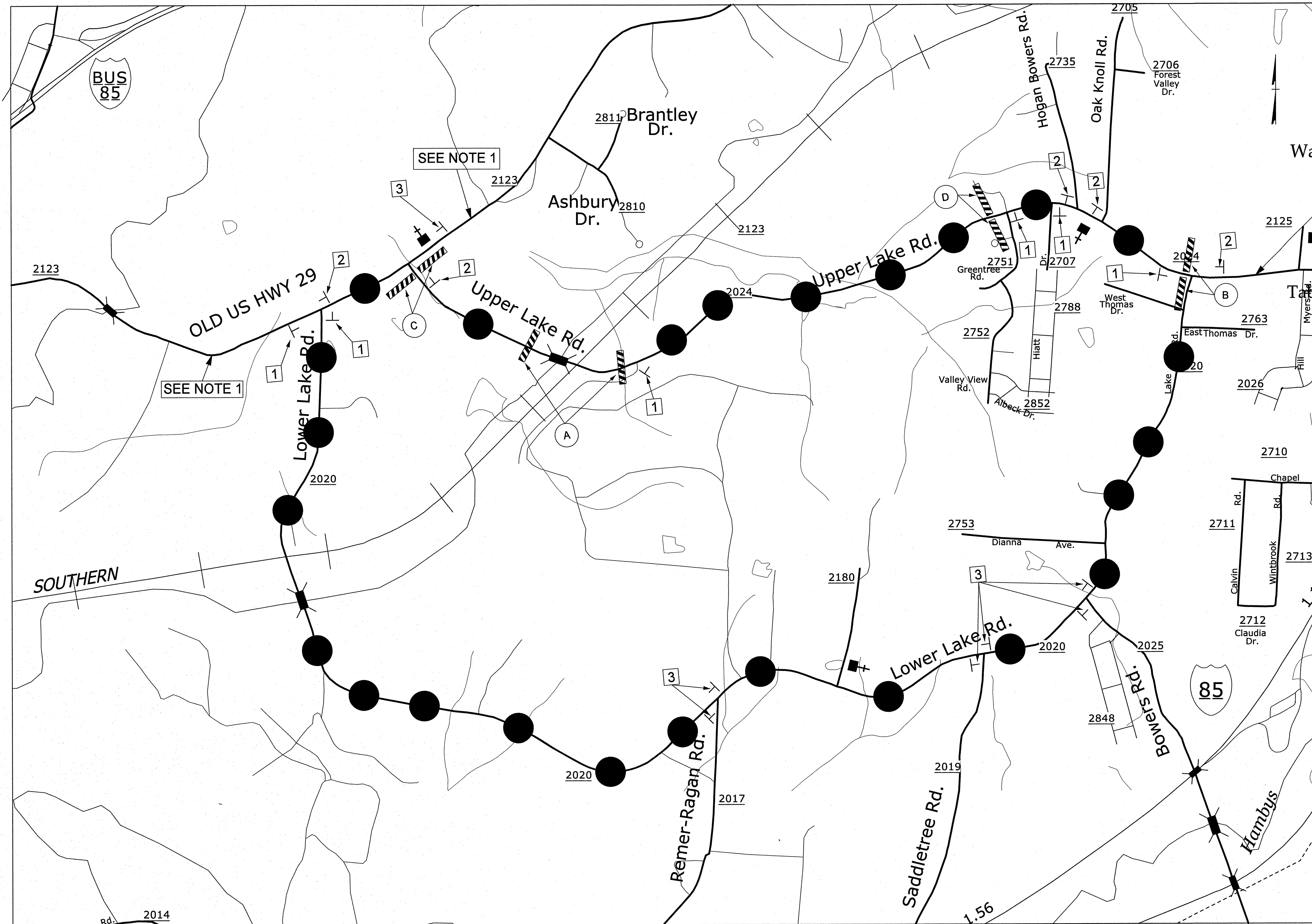
PHASE 1 DETAIL

SCALE: 1" = 50'		<table border="1"> <tr><th colspan="2">REVISIONS</th></tr> <tr><td> </td><td> </td></tr> <tr><td> </td><td> </td></tr> <tr><td> </td><td> </td></tr> </table>	REVISIONS							
REVISIONS										
DATE: 01/04/13										
DWG. BY: TLH										
DESIGN BY: TLH										
REVIEWED BY: TRH	CADD FILE									

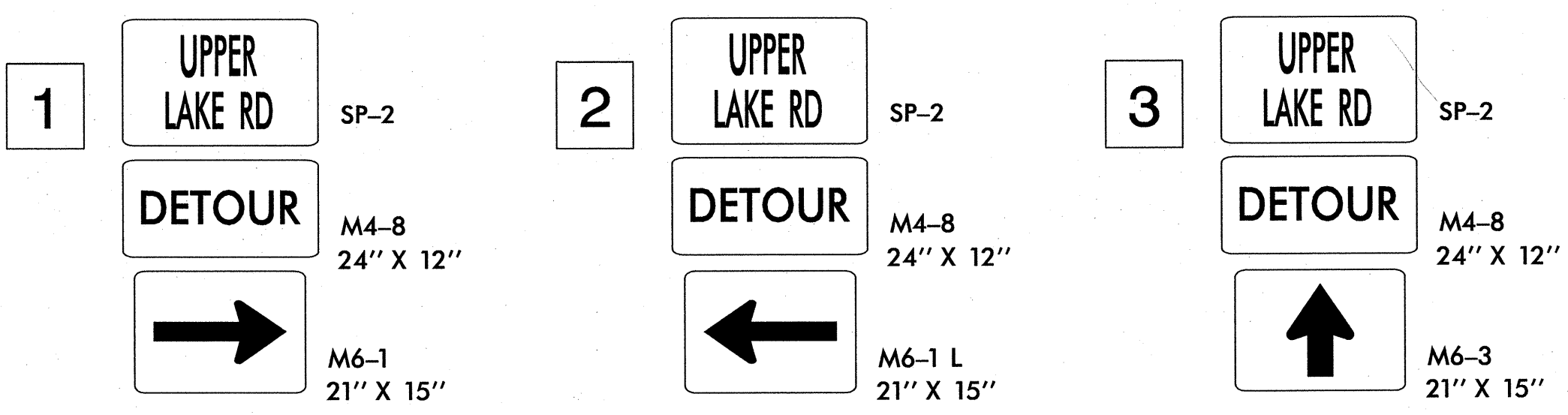
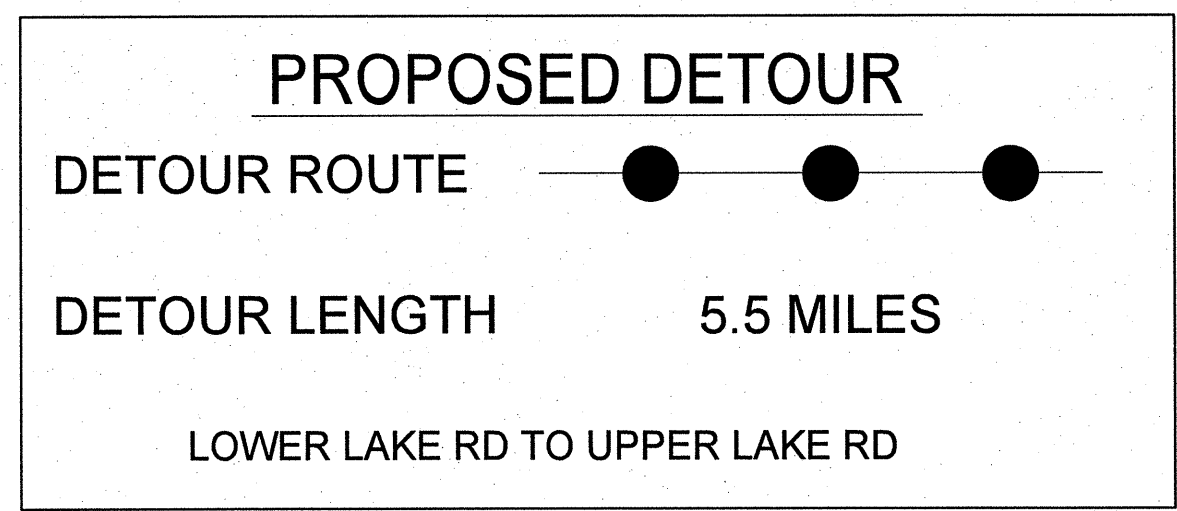
PROPOSED DETOUR



PROJ. REFERENCE NO.	SHEET NO.
C-4901B	TMP-5



NOTE 1: INSTALL TEMPORARY ROAD CLOSURE SIGNS PER RSD 1101.03



NOTE 2: ROAD CLOSURE & OFFSITE DETOUR LIMITED TO 45 DAYS



3220 GLEN ROYAL RD. RALEIGH, NC 27617
 TELE 919.788.0224 FAX 919.788.0232
 NC LICENSE #P-0189

SR 2024 UPPER LAKE RD. OFF-SITE DETOUR

APPROVED: _____ DATE: _____

SEAL

NORTH CAROLINA

PROFESSIONAL ENGINEER

SEAL 10359

THOMAS R. WELTER

SCALE: 1"=50'
 DATE: 01/04/13
 DWG. BY: TLH
 DESIGN BY: TLH
 REVIEWED BY: TRH

REVISIONS	CADD FILE

0259DEL_P10c2

\$\$\$\$\$SYTIME\$\$\$\$\$
 \$\$\$DCN\$\$\$\$\$
 \$\$\$USERNAME\$\$\$\$\$

0259DEL_F10c2

PHASE II



PROJ. REFERENCE NO.	SHEET NO.
C-4901B	TMP-6

10

15

20

25

BEGIN TIP PROJECT C-4901B
POT STA. 13+90.00 -L-

MARTIN MARIETTA MATERIALS
DB 892 PG 309

TERRY F. & TAMARA H. SIMMONS
DB 1070 PG 1708

MARTIN MARIE
DB

MARTIN MARIETTA MATERIALS INC
DB 892 PG 309

ASPHALT
PLANT

GRAU 350

GRAU 350

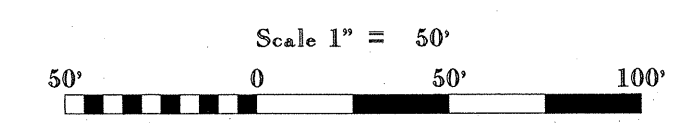
(A)

MATCH LINE -L- STA. 25+00.00

MARTIN MARIETTA MATERIALS INC
DB 892 PG 309

MARTIN MARIETTA MATERIALS INC
DB 892 PG 309

\$\$\$\$\$SYTIME\$\$\$\$\$
\$\$\$\$\$DGN\$\$\$\$\$
\$\$\$\$\$USERNAME\$\$\$\$\$



CH ENGINEERING
 3220 GLEN ROYAL RD. RALEIGH, NC 27617
 TELE 919.788.0224 FAX 919.788.0232
 NC LICENSE #P-0189

APPROVED: _____ DATE: _____

SEAL

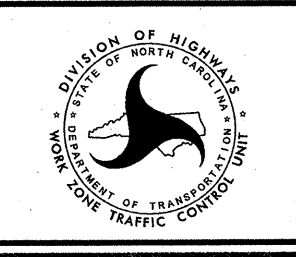
 THOMAS B. NEEL
 1.7.13

PHASE II DETAIL

SCALE: 1" = 50'
 DATE: 01/04/13
 DWG. BY: TLH
 DESIGN BY: TLH
 REVIEWED BY: TRH

REVISIONS

CADD FILE



PHASE II



PROJ. REFERENCE NO.	SHEET NO.
C-4901B	TMP-7

0259DEL_P10c2

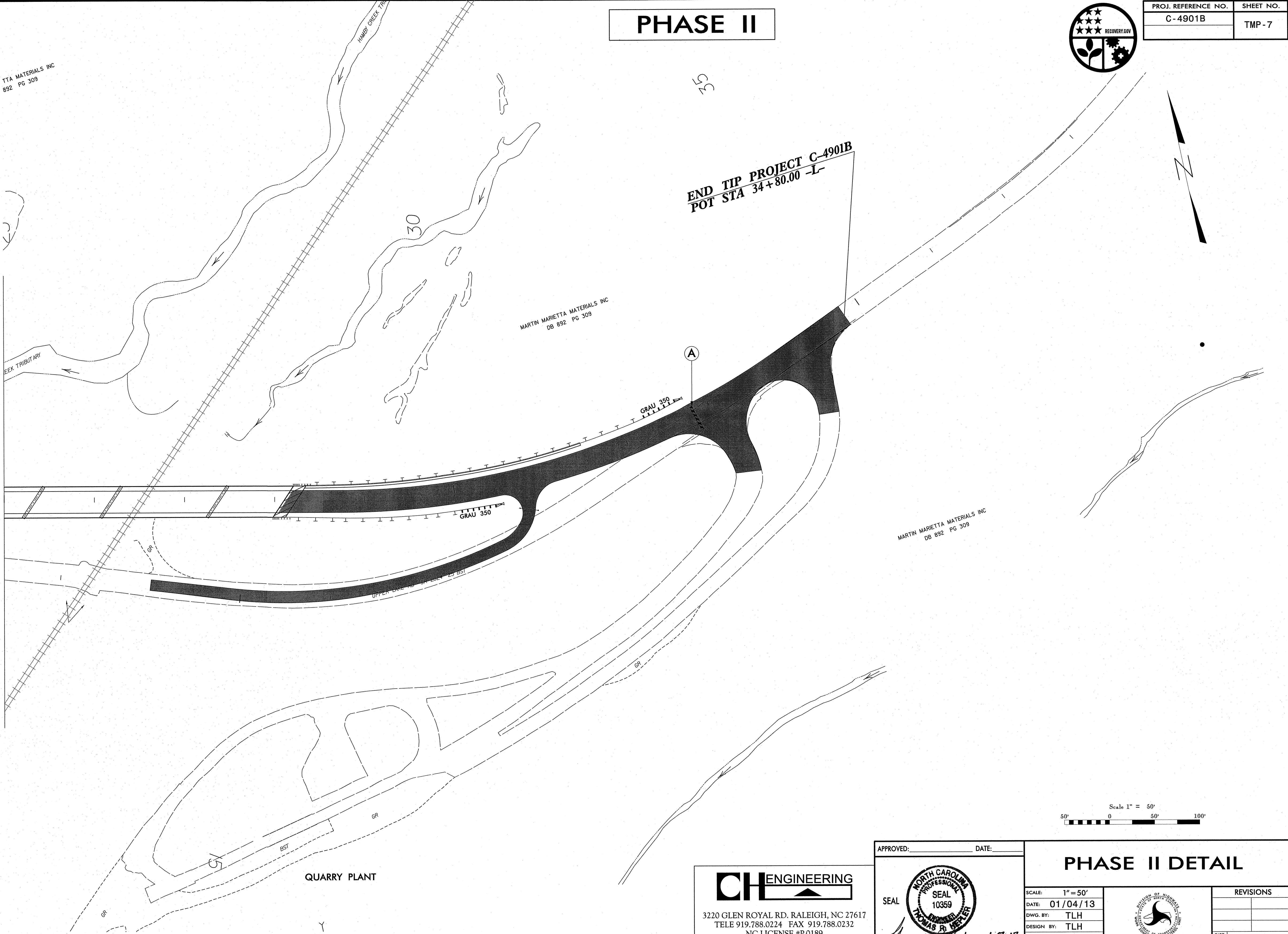
TTA MATERIALS INC
892 PG 309

MARTIN MARIETTA MATERIALS INC
DB 892 PG 309

MARTIN MARIETTA MATERIALS INC
DB 892 PG 309

END TIP PROJECT C-4901B
POT STA 34+80.00 -L-

MATCH LINE -L- STA. 25+00.00



Scale 1" = 50'
50' 0 50' 100'

QUARRY PLANT

CH ENGINEERING
3220 GLEN ROYAL RD. RALEIGH, NC 27617
TELE 919.788.0224 FAX 919.788.0232
NC LICENSE #P-0189

APPROVED: _____ DATE: _____

SEAL
NORTH CAROLINA PROFESSIONAL ENGINEER
SEAL 10359
THOMAS R. DEWET

Thomas R. Dewet 1.7.13

PHASE II DETAIL

SCALE: 1" = 50'		<table border="1"> <tr> <th colspan="2">REVISIONS</th> </tr> <tr> <td> </td> <td> </td> </tr> <tr> <td> </td> <td> </td> </tr> <tr> <td> </td> <td> </td> </tr> </table>	REVISIONS							
REVISIONS										
DATE: 01/04/13										
DWG. BY: TLH										
DESIGN BY: TLH										
REVIEWED BY: TRH	CADD FILE									

\$\$\$\$\$SYTIME\$\$\$\$\$
\$\$\$\$\$DCN\$\$\$\$\$
\$\$\$\$\$USERNAME\$\$\$\$\$



SIGN NUMBER: SP-2
 TYPE: D
 QUANTITY: 18
 SIGN WIDTH: 3'-0"
 HEIGHT: 1'-9"
 TOTAL AREA: 5.25 Sq.Ft.
 BORDER TYPE: RECESSED
 RECESS: 0.47"
 WIDTH: 0.63"
 RADII: 1.5"

BACKG COLOR: Orange
 COPY COLOR: Black

SYMBOL	X	Y	WID	HT

DESIGN BY: TRH
 PROJECT ID: C4901B

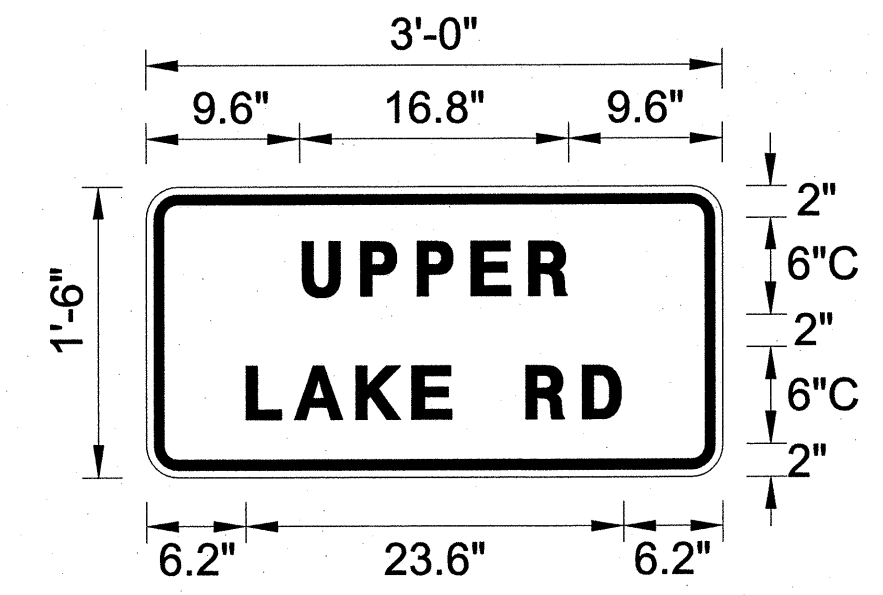
CHECKED BY:
 DIV: DIV

DATE: Dec 5, 2012

NO. Z BARS:
 LENGTH:
 MAT'L: 0.080" (2.0 mm) ALUMINUM

USE NOTES:

- Legend and border shall be direct applied, black, non-reflective sheeting.
- Background shall be type VII,VIII,IX (Prismatic), Fluorescent orange, Retro-reflective sheeting.



BORDER
 R=1.5"
 TH=0.63"
 IN=0.47"

Spacing Factor is 1 unless specified otherwise

LETTER POSITIONS

Letter spacings are to start of next letter										Series/Size
										Text Length
U	P	P	E	R						B
9.6	13.0	16.4	19.8	23.0						16.8
L	A	K	E		R	D				B
6.2	9.4	13.5	16.9	20.0	23.0	26.4				23.6

FILENAME: TCP SIGN DESIGNS

NORTH CAROLINA D.O.T. SIGN DETAIL

0259DEL_P10c2

\$\$\$\$\$SYTIME\$\$\$\$\$
 \$\$\$\$\$\$DGN\$\$\$\$\$
 \$\$\$\$\$\$USERNAME\$\$\$\$\$

APPROVED: _____	DATE: _____	SIGN DESIGN		
	SCALE: NONE			REVISIONS
	DATE: 01/04/13			
	DWG. BY: TLH			
	DESIGN BY: TRH			
		REVIEWED BY: TRH	CADD FILE	