


**STATE OF NORTH CAROLINA
DEPARTMENT OF TRANSPORTATION**

TIP NO. B-4859	SHEET NO. SIGN-1
APPROVED: <i>[Signature]</i>	
DATE: 12/3/12	
SEAL 	

**SIGNING PLAN
DAVIDSON COUNTY**

**LOCATION: BRIDGE 138 OVER RICH FORK CREEK ON
US 29-701-85 BUSINESS**

T.I.P.: B-4859
CONTRACT: C203085

GENERAL NOTES

- SIGNS FURNISHED BY STATE
- ALL TYPE 'D' SIGNS SHALL BE MOUNTED ON TWO U-CHANNEL POSTS UNLESS OTHERWISE INDICATED ON THE PLANS.
- SIGNING PLANS DO NOT INCLUDE TEMPORARY CONSTRUCTION SIGNING. SEE TRAFFIC CONTROL PLANS
- WHEN NOT STATIONED OR DIMENSIONED ON PLANS, ALL 'E' AND 'F' SIGNS SHALL BE FIELD LOCATED BY THE ENGINEER
- ALL EXISTING SIGNS ON "U" CHANNEL POST WITHIN THE PROJECT LIMITS SHALL BE REMOVED AND DISPOSED OF UNLESS OTHERWISE NOTED ON PLANS.
- THE BACKGROUND FOR TYPE E & F SIGNS SHALL BE TYPE C REFLECTIVE SHEETING.
- SEE ROADWAY PLANS FOR GUARD/GUIDE RAIL DETAILS.

SUMMARY OF QUANTITIES

ITEM NO.	DESC. NO.	SECT. NO.	ITEM DESCRIPTION	QUANTITY	UNIT
4072000000	903		SUPPORTS, 3 LB STEEL U-CHANNEL	82	L.F.
4096000000	904		SIGN ERECTION, TYPE D	2	EA.
4155000000	907		DISPOSAL OF SIGN SYSTEM, U-CHANNEL	5	EA.

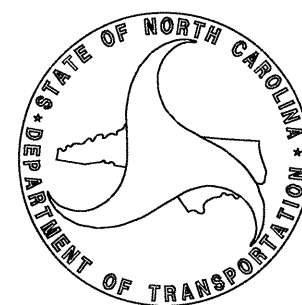
ROADWAY STANDARD DRAWING

THE FOLLOWING ROADWAY STANDARDS AS APPEAR IN "ROADWAY STANDARD DRAWINGS" - PROJECT SERVICES UNIT - N.C. DEPARTMENT OF TRANSPORTATION - RALEIGH, N.C., DATED JANUARY 2012 ARE APPLICABLE TO THIS PROJECT AND BY REFERENCE HEREBY ARE CONSIDERED A PART OF THESE PLANS:

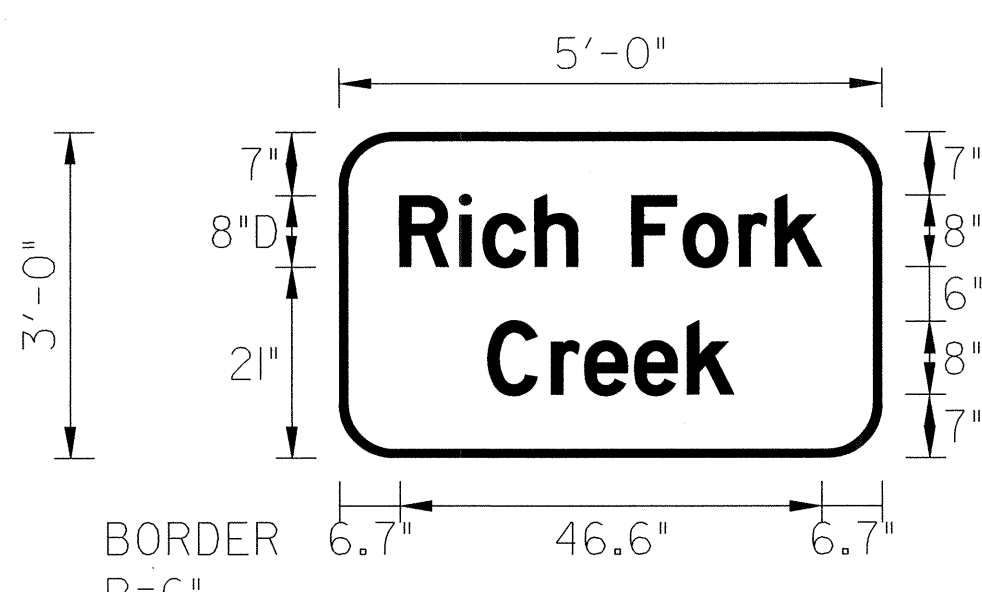
STD. NO.	TITLE
904.10	ORIENTATION OF GROUND MOUNTED SIGNS
904.50	MOUNTING OF TYPE 'D', 'E' AND 'F' SIGNS ON 'U' CHANNEL POSTS

PLAN PREPARED BY: N.C.D.O.T. SIGNING AND DELINEATION UNIT

SUSAN B. KUNZ SIGNING & DELINEATION REGIONAL ENGINEER
STACEY JOHNS SIGNING & DELINEATION DESIGN ENGINEER



SIGN NUMBER: 301,302 TYPE: D QUANTITY: 2 SIGN WIDTH: 5'-0" HEIGHT: 3'-0" TOTAL AREA: 15.0 Sq.Ft.	BACKG COLOR: Green COPY COLOR: White SYMBOL X Y WID HT BORDER TYPE: FLUSH RECESS: 0" WIDTH: 1" RADI: 6" NO. Z BARS: LENGTH:	DESIGN BY: SJOHNS PROJECT ID: B-4859	CHECKED BY: SBKUNZ DIV: 9	DATE: Nov 26, 2012
---	---	---	------------------------------	--------------------



BORDER R=6" TH=1"

Spacing Factor is 1 unless specified otherwise

Letter spacings are to start of next letter												Series/Size
												Text Length
R	i	c	h	F	o	r	k					D 2000
6.7	6.6	2.6	5.8	4.7	6	5.7	6.2	4	5.1	6.7		46.6
C	r	e	e	k								D 2000
16.4	7	3.7	5.5	5.8	5.1	16.4						27.2


FILENAME: B-4859_Sgn Design NORTH CAROLINA D.O.T. SIGN DETAIL

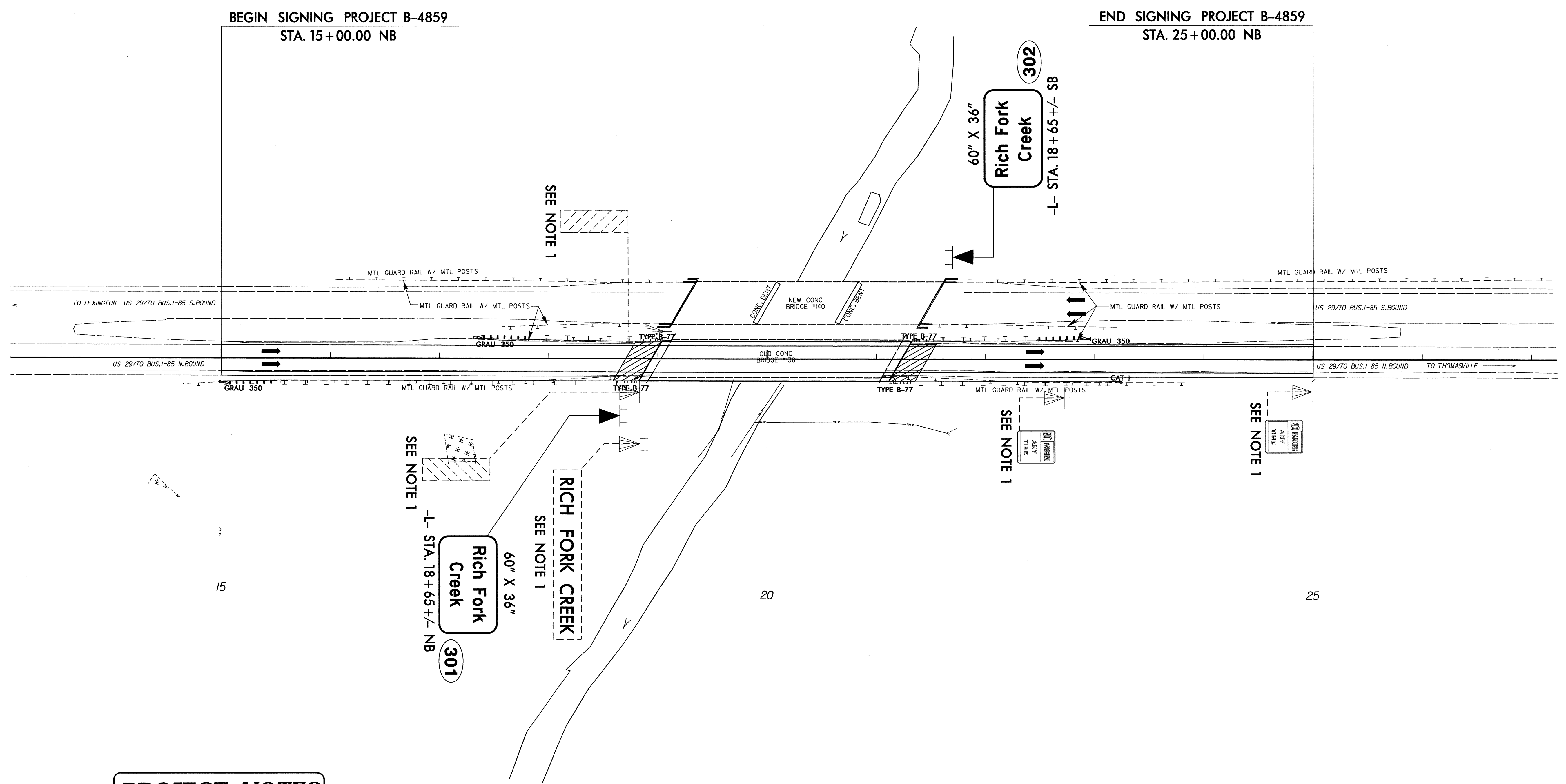
PROJECT NOTES

- DISPOSAL OF SIGN SYSTEM, U-CHANNEL

INDEX

SHEET NO.	DESCRIPTION
SIGN-1	TITLE SHEET, SIGN DESIGN, NOTES
SIGN-2	SIGN DETAIL SHEET

TIP NO. B-4859	SHEET NO. SIGN-2
APPROVED: <i>R.W.F.</i>	
DATE: 12/3/12	
SEAL	
	



PROJECT NOTES	
1	DISPOSAL OF SIGN SYSTEM, U-CHANNEL

EXISTING AND PROPOSED SIGNS
US 29-701-85 BUSINESS

25-101-2012 17:17
 S:\Projects\25-101-2012\Traffic\Signing\CADD\Signing Layout Plans\B-4859_Sgn_1.dgn
 S:\Projects\25-101-2012\Traffic\Signing\CADD\Signing Layout Plans\B-4859_Sgn_1.dgn
 S:\Projects\25-101-2012\Traffic\Signing\CADD\Signing Layout Plans\B-4859_Sgn_1.dgn