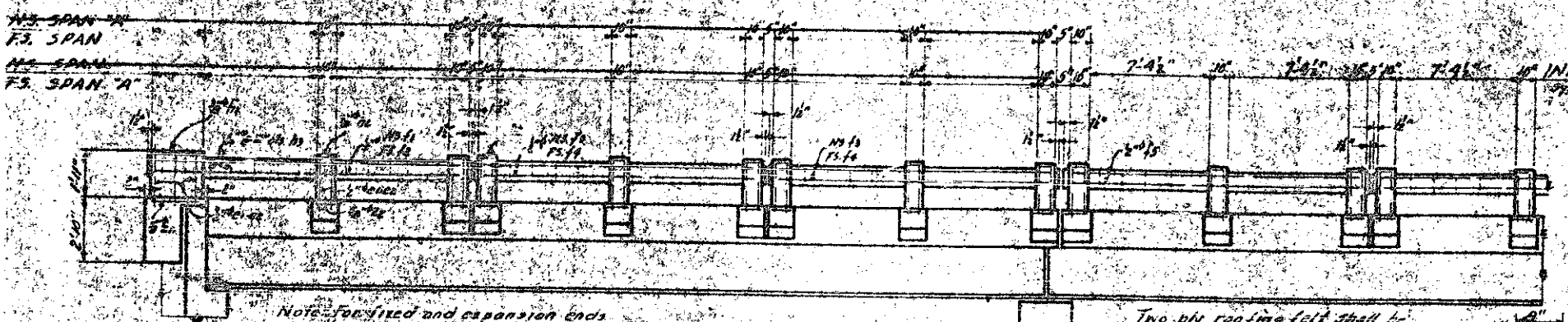
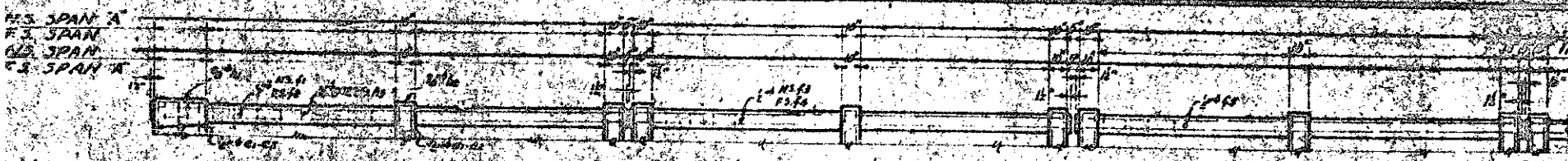


TOTAL BILL OF MATERIAL					
	Class II Concrete	Reinforcing Steel	Structural Steel	12H53 Steel Piles	Unclass. Struct. Easym.
	Cu. Yds.	Lbs.	Approx. Lbs.	No. Lin. Ft.	Cu. Yds.
Span A-D	78.0	23,580	49,300		
Span B-C	86.7	18,608	71,000		
End Bent No 1	11.0	2,035		195' 11"	
Bent No 1	21.4	4,548			
Bent No 2	21.8	4,548			
Bent No 3	21.2	4,548			
End Bent No 2	11.0	2,035		195' 11"	
Approach Cms	3.2				
Totals	253.3	51,976	120,300	391' 0"	

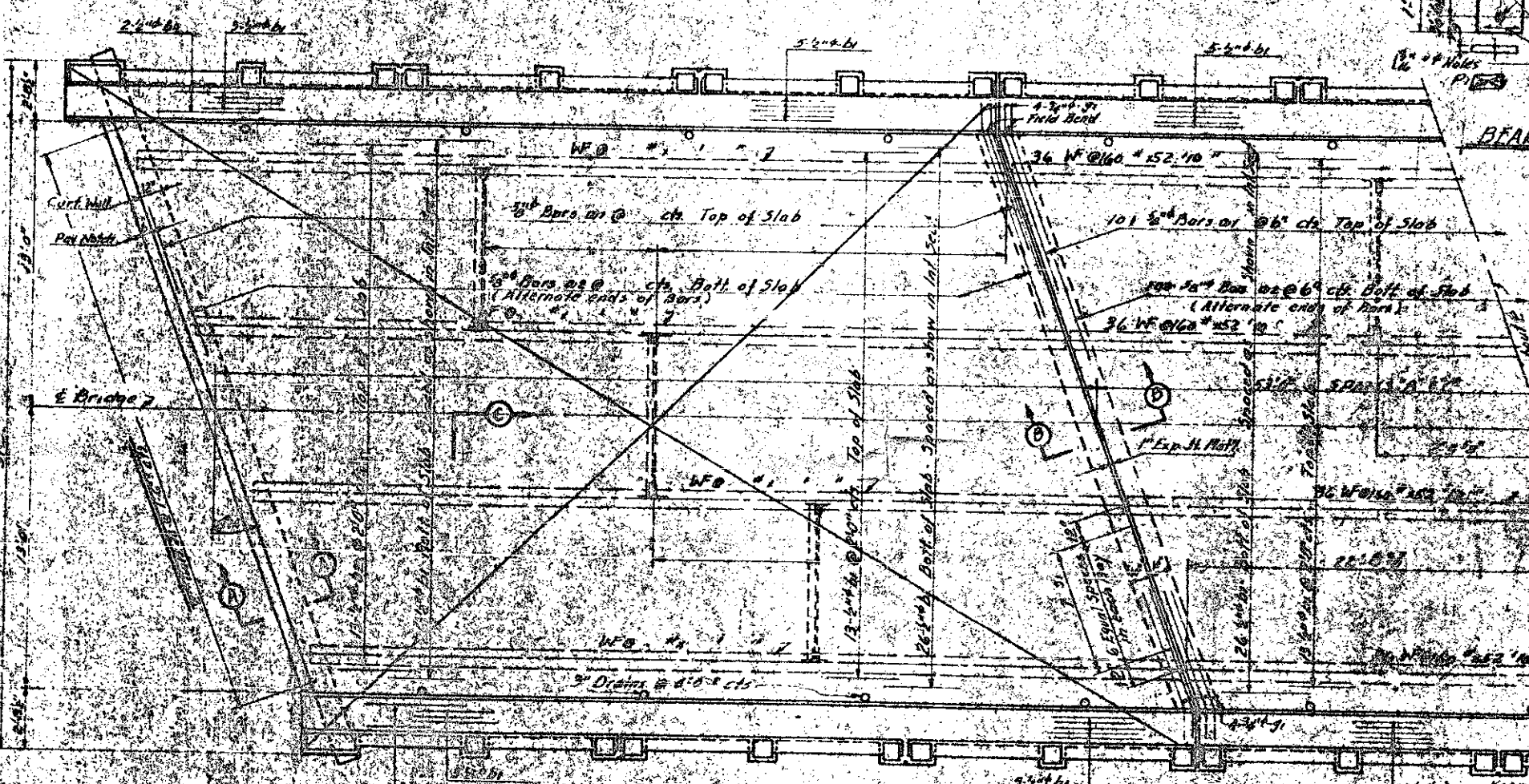
I hereby certify that this structure was built and quantities allowed in accordance with these plans.
 F. H. Beams, Resident Engineer.

PROJECT NO. 6376
IREDELL COUNTY
STATION: 63+25.61

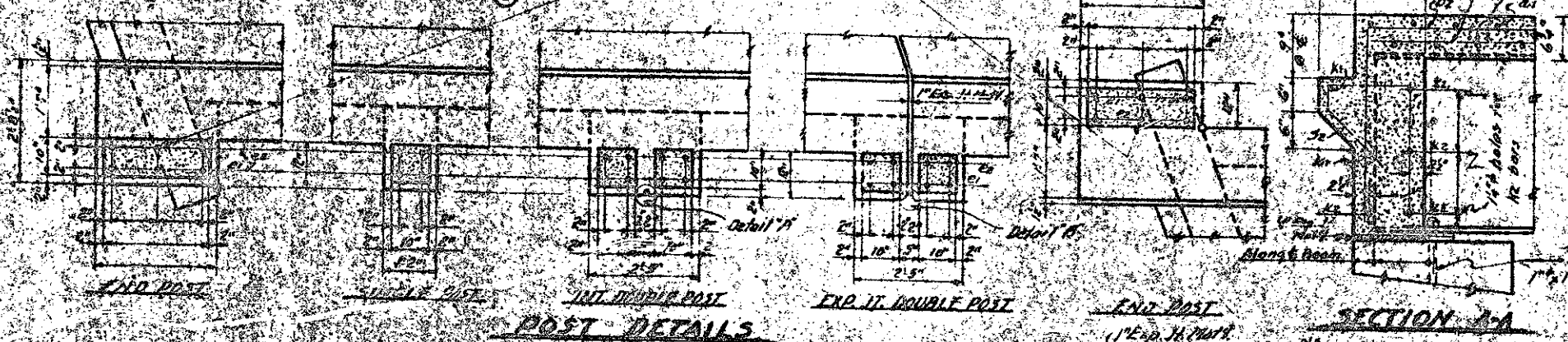
STATE OF NORTH CAROLINA STATE HIGHWAY AND PUBLIC WORKS COMMISSION			
GENERAL DRAWING FOR BRIDGE OVER NEW U.S. 64670 ON COUNTY ROAD BETWEEN PRIMES STORE & PRES. U.S. 64670			
JUNE 1955			
DATE	BY	APPROVED BY	DATE
SHEET NO.	5-2	TOTAL SHEETS	39



ELEVATION



PLAN

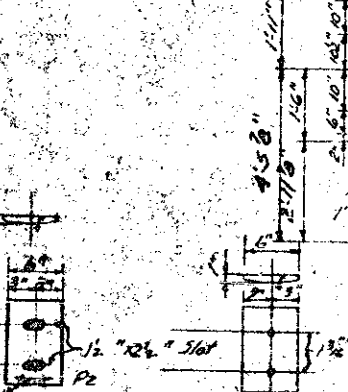


POST DETAILS

SPECIAL	As shown on drawings
STANDARD	As shown on drawings

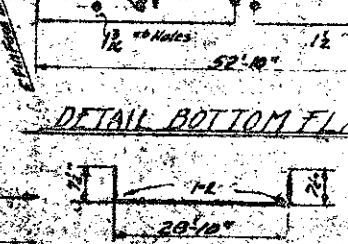
DRAIN DETAIL

Note: Drains may be either cast iron standard weight galvanized steel

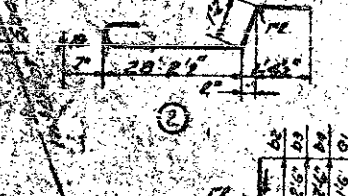


BEARING PLATE DETAILS

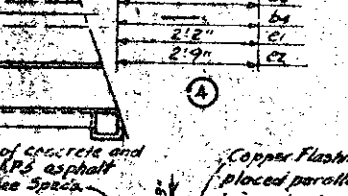
Note: Mill & shop inspection required for structural steel.



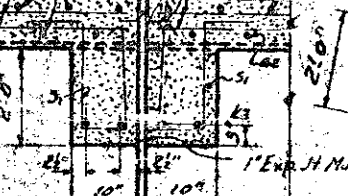
DETAIL BOTTOM FLANGE



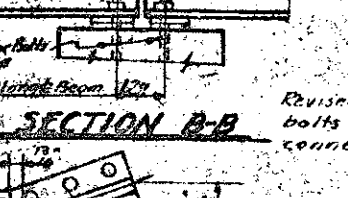
SECTION THRU BEAM



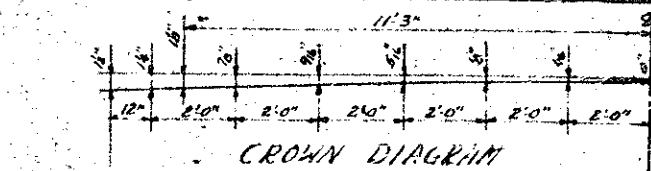
SECTION A-A



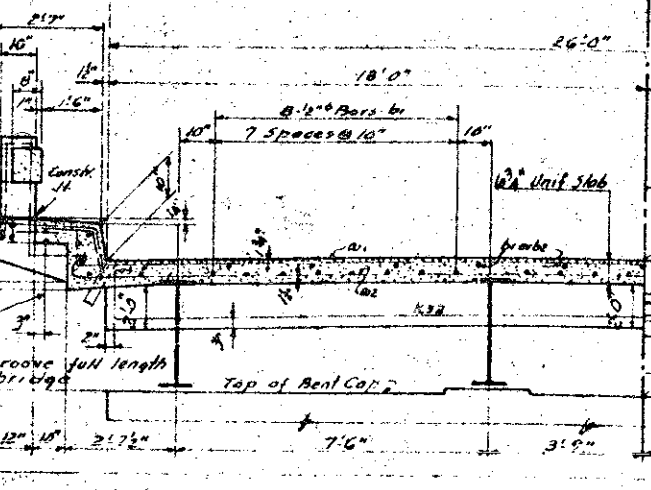
SECTION B-B



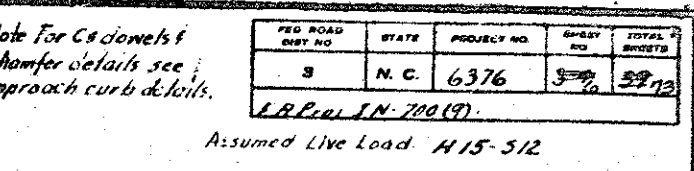
COPPER FLASHING



CROWN DIAGRAM



HALF INTERIOR SECT.



HALF END VIEW

BILL OF MATERIAL FOR TWO SPANS @ 59'-0"

Bar No.	Size	Type	Length	Weight	
B1	208	5"	1	30.1'	6337
B2	200	5"	2	31.4'	6538
b1	196	5"	5	27.0'	3535
b2	---	5"	4	---	---
b3	---	5"	4	---	---
b4	---	5"	4	---	---
c1	72	5"	4	3.8'	176
c2	72	5"	4	4.3'	208
f1	---	5"	5	---	---
f2	---	5"	5	---	---
f3	---	5"	5	---	---
f4	---	5"	5	---	---
f5	48	5"	5	17.2'	550
g1	16	3/4"	5	6.0'	144
h1	---	5"	5	---	---
h2	26	5"	5	2.10'	30
h3	216	5"	5	2.7'	43
k1	---	5"	5	---	---
k2	---	5"	5	---	---
k3	16	3/4"	3	17.0'	407
s1	8-2	5"	7	5.8'	318
s2	---	5"	6	3.0'	---
z1	---	5"	8	---	---
z2	26	5"	6	7.1'	266
Reinforcing Steel				Lbs.	18606
Class A Concrete				Cu Yds	26.7
Structural Steel Approx				Lbs	71000

BAR TYPES

(Dimensions are out to out)

Revised to call for 3/4" high strength bolts for diaphragm to beam connection 7-26-55 JPM

Note: Copper flashing to be in accordance with the Specs. Copper flashing shall be placed

Note For C1 details & chamfer details see approach curb details.

Note: For other design data and general notes see Sheet 5-N

Note: Mill & shop inspection required for structural steel.

Note: At the contractor's option, shop connections of split 18" I-beams may be either welded or riveted using 3/4" rivets.

Note: Field connection of diaphragms to beams shall be bolted using 3/4" high strength bolts in accordance with the Special Provisions.

Note: Pipe sleeve extending to above flange and gasket washer on expansion end only.

Note: Keep free of concrete and seal with AP5 asphalt cement. See Specs.

Note: Copper flashing placed parallel to crown of roadway.

Note: This bar to be shifted as necessary to clear name plate.

Note: Keep free of concrete and seal with AP5 asphalt cement. See Specs.

Note: Copper flashing placed parallel to crown of roadway.

Note: This bar to be shifted as necessary to clear name plate.

Note: Keep free of concrete and seal with AP5 asphalt cement. See Specs.

Note: Copper flashing placed parallel to crown of roadway.

Note: This bar to be shifted as necessary to clear name plate.

Note: Keep free of concrete and seal with AP5 asphalt cement. See Specs.

Note: Copper flashing placed parallel to crown of roadway.

Note: This bar to be shifted as necessary to clear name plate.

Note: Keep free of concrete and seal with AP5 asphalt cement. See Specs.

Note: Copper flashing placed parallel to crown of roadway.

Note: This bar to be shifted as necessary to clear name plate.

Note: Keep free of concrete and seal with AP5 asphalt cement. See Specs.

Note: Copper flashing placed parallel to crown of roadway.

Note: This bar to be shifted as necessary to clear name plate.

Note: Keep free of concrete and seal with AP5 asphalt cement. See Specs.

Note: Copper flashing placed parallel to crown of roadway.

Note: This bar to be shifted as necessary to clear name plate.

Note: Keep free of concrete and seal with AP5 asphalt cement. See Specs.

Note: Copper flashing placed parallel to crown of roadway.

Note: This bar to be shifted as necessary to clear name plate.

FED. ROAD DIST. NO.	STATE	PROJECT NO.	SHEET NO.	TOTAL SHEETS
5	N. C.	6376	5	58

Assumed Live Load: H 15-512

Clear Roadway: 13'-0"

Clear Roadway: 13'-0"

Clear Roadway: 13'-0"

Clear Roadway: 13'-0"

Clear Roadway: 13'-0"

Clear Roadway: 13'-0"

Clear Roadway: 13'-0"

Clear Roadway: 13'-0"

Clear Roadway: 13'-0"

Clear Roadway: 13'-0"

Clear Roadway: 13'-0"

Clear Roadway: 13'-0"

Clear Roadway: 13'-0"

Clear Roadway: 13'-0"

Clear Roadway: 13'-0"

Clear Roadway: 13'-0"

Clear Roadway: 13'-0"

Clear Roadway: 13'-0"

Clear Roadway: 13'-0"

Clear Roadway: 13'-0"

Clear Roadway: 13'-0"

Clear Roadway: 13'-0"

Clear Roadway: 13'-0"

Clear Roadway: 13'-0"

Clear Roadway: 13'-0"

Clear Roadway: 13'-0"

Clear Roadway: 13'-0"

Clear Roadway: 13'-0"

Clear Roadway: 13'-0"

Clear Roadway: 13'-0"

Clear Roadway: 13'-0"

Clear Roadway: 13'-0"

Clear Roadway: 13'-0"

Clear Roadway: 13'-0"

Clear Roadway: 13'-0"

Clear Roadway: 13'-0"

Clear Roadway: 13'-0"

Clear Roadway: 13'-0"

Clear Roadway: 13'-0"

Clear Roadway: 13'-0"

Clear Roadway: 13'-0"

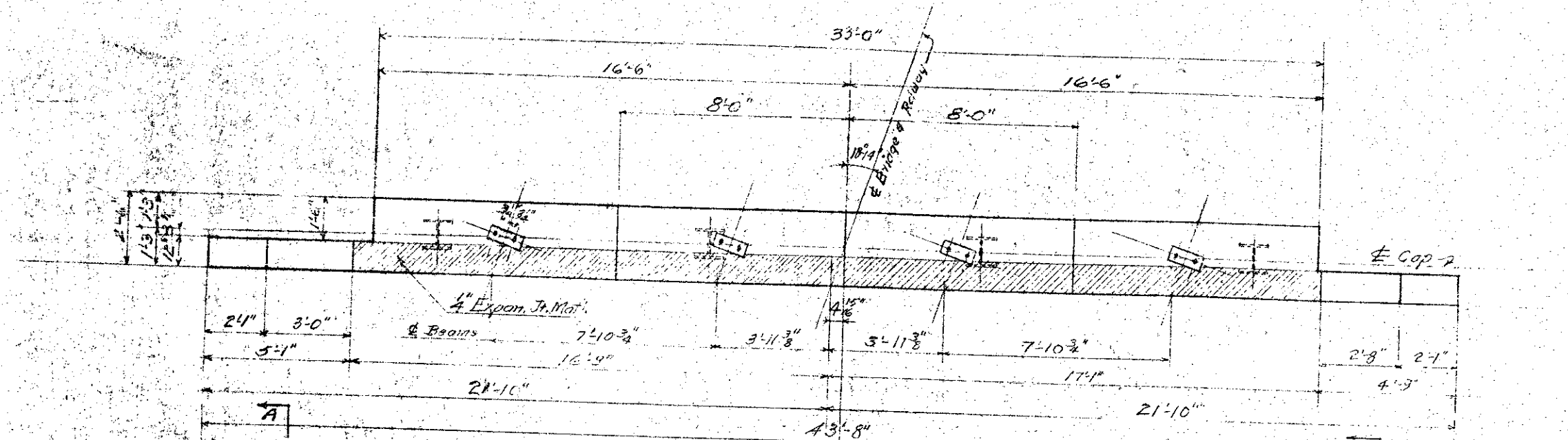
Clear Roadway: 13'-0"

Clear Roadway: 13'-0"

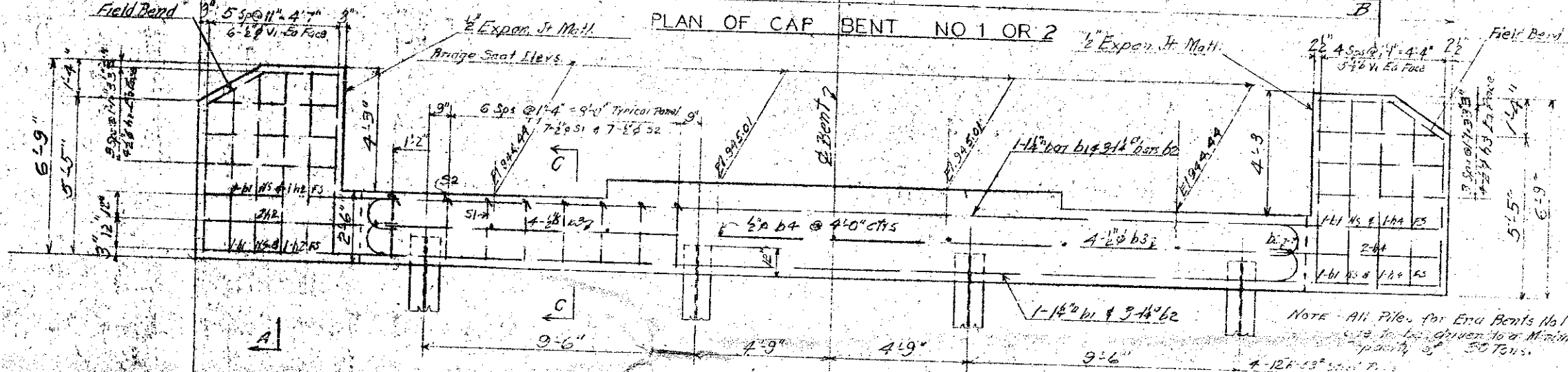
Clear Roadway: 13'-0"

STATE OF NORTH CAROLINA
STATE HIGHWAY AND
PUBLIC WORKS COMMISSION
STANDARD
I-BEAM SUPERSTRUCTURE
WITH R.C. FLOOR AND RAIL
26' ROADWAY 19'-4" RH SKEW
AUG. 1953

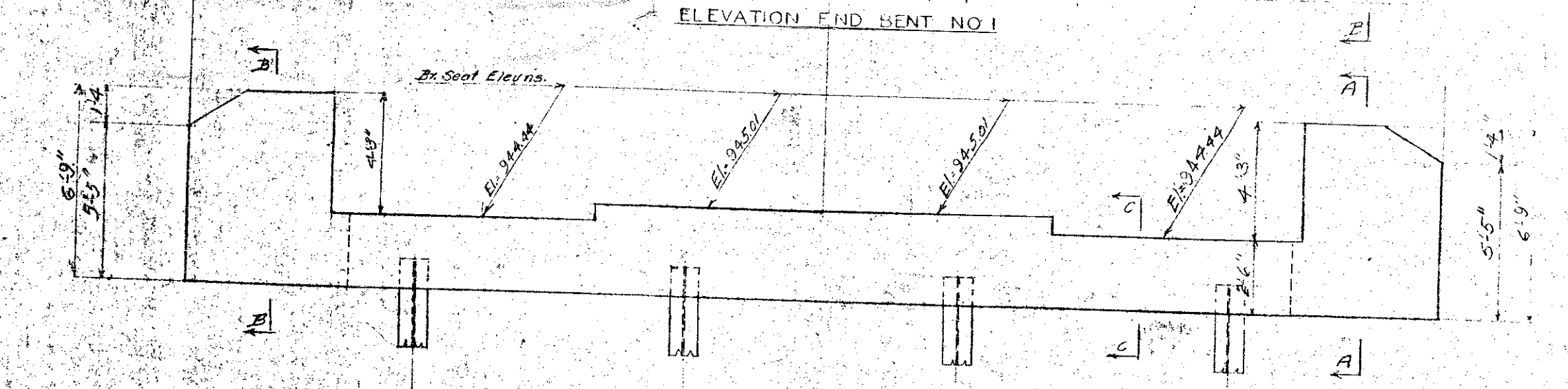
FED. ROAD DIST. NO.	STATE	PROJECT
3	N.C.	
11 No. 111-702-3-1		



PLAN OF CAP BENT NO 1 OR 2

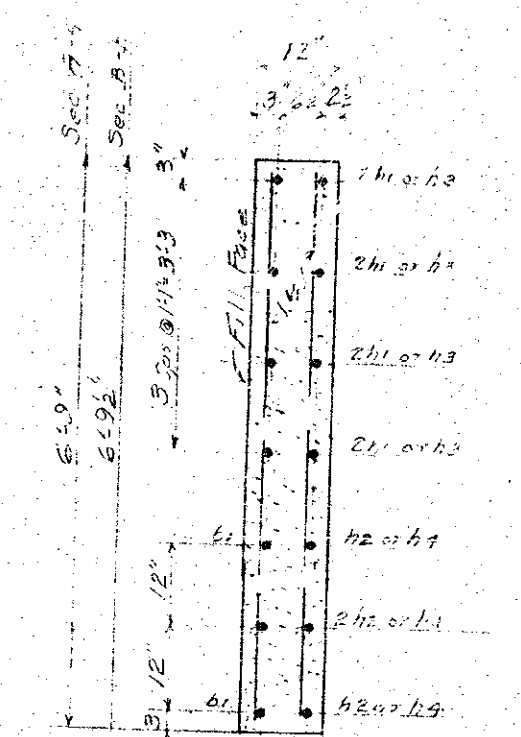


ELEVATION END BENT NO 1

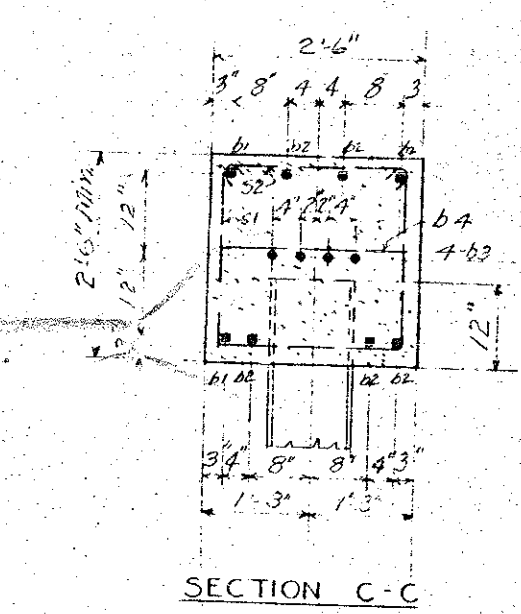


ELEVATION END BENT NO 2 - FILL FACE

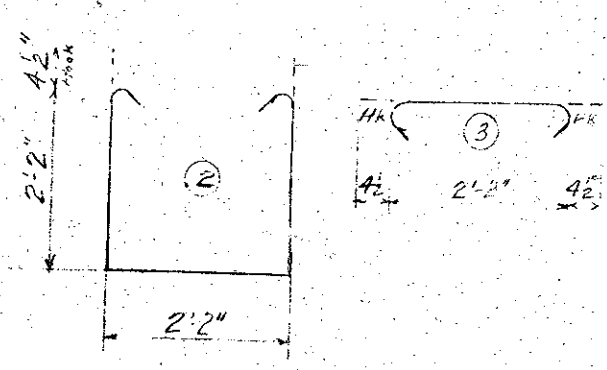
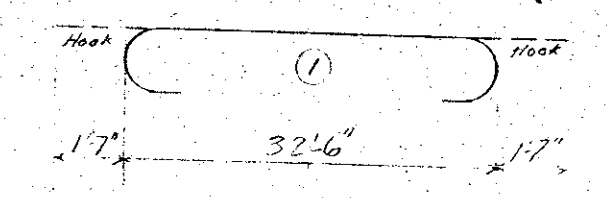
For Reinforcing Steel and other information not given See End Bent No. 1



SECTION A-A OR B-B



SECTION C-C



BAR TYPES
Note All dimensions are Out to Out

BILL OF MATERIAL
FOR ONE BENT 2 REQUIRE

NO.	QTY.	SIZE	UNIT	REMARKS	QTY.
b1	2	1/2"	ft	5'-9"	18
b2	6	1/2"	ft	16'-11"	113
b3	8	1/2"	ft	2'-2"	16
b4	9	1/2"	ft	2'-2"	18
b5	3	1/2"	ft	4'-0"	23
b6	4	1/2"	ft	7'-1"	11
b7	2	1/2"	ft	3'-5"	21
b8	1	1/2"	ft	1'-1"	11
b9	23	1/2"	ft	7'-3"	11
b10	23	1/2"	ft	1'-11"	41
b11	22	1/2"	ft	2'-2"	34

End Bent No. 1 Lin. Ft. 177'-10"
End Bent No. 2 Lin. Ft. 169'-9"

PROJECT NO. 6376
IREDELL COUNTY
STATION: 63+25.61
END BENTS NO. 1 & NO. 2

STATE OF NORTH CAROLINA
STATE HIGHWAY AND
PUBLIC WORKS COMMISSION
RALEIGH

SUBSTRUCTURE

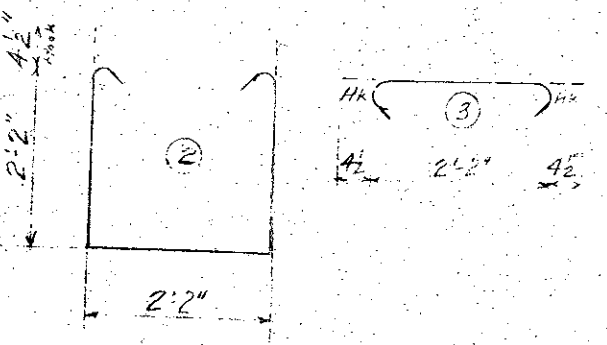
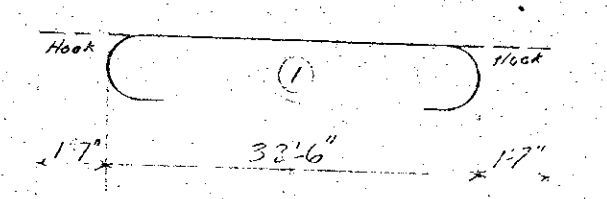
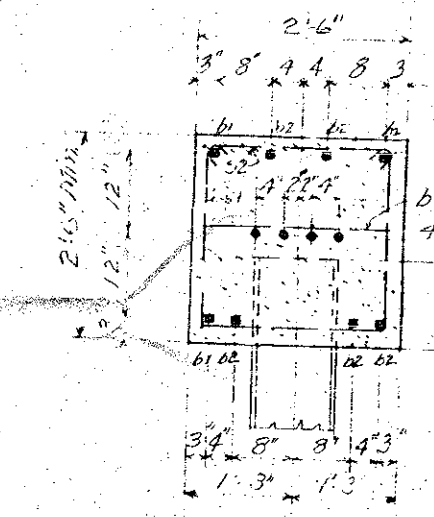
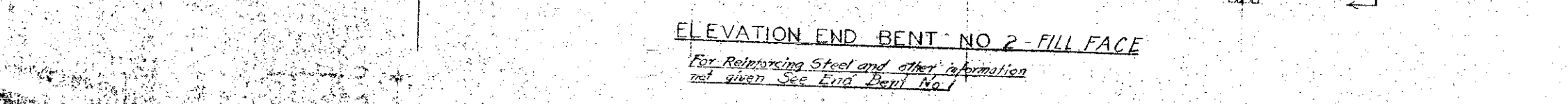
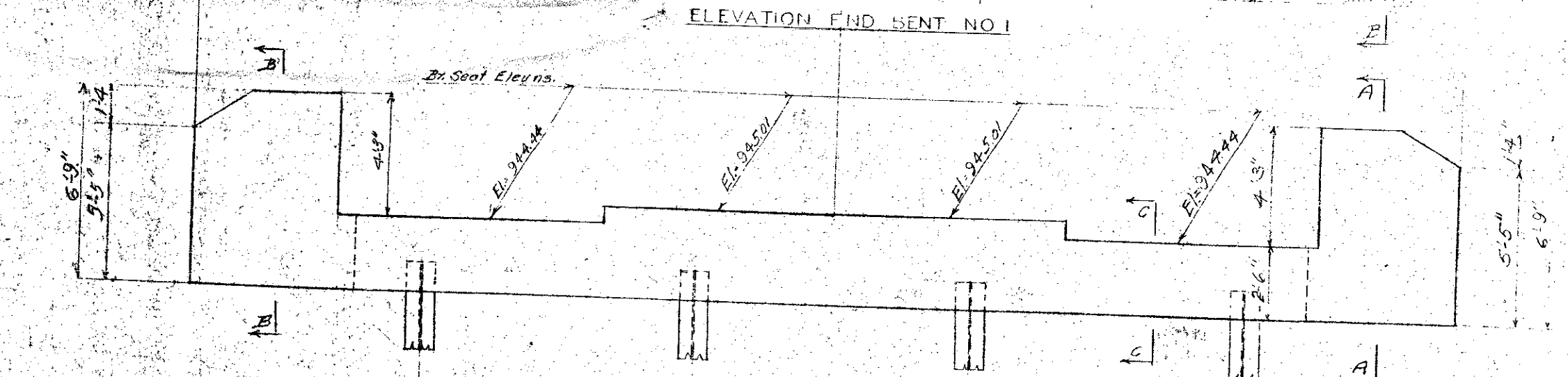
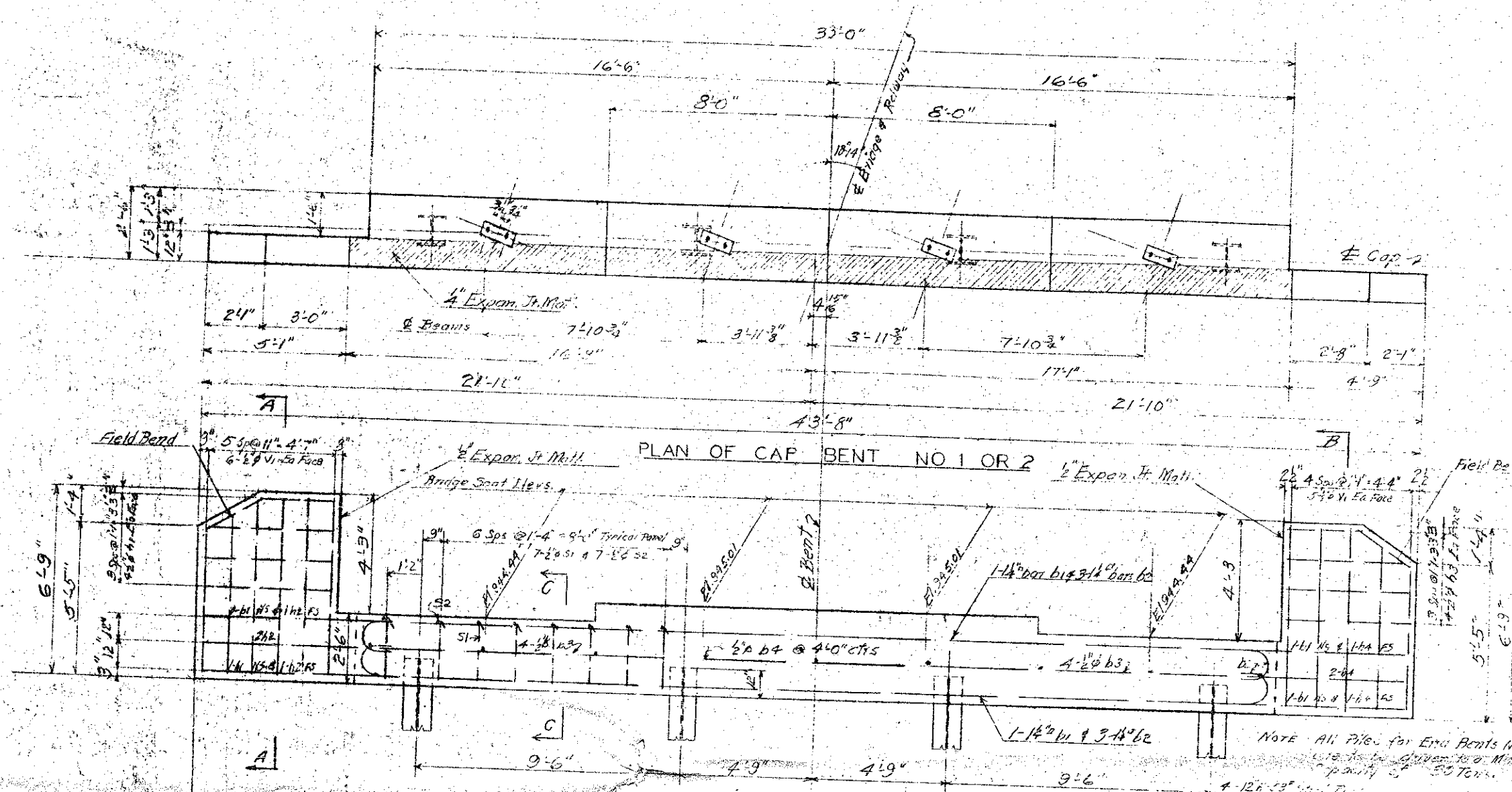
JUNE 1955

DESIGNED BY: [Signature]
CHECKED BY: [Signature]
APPROVED BY: [Signature] DATE: 7-5-55

SCALE: 3/8" = 1'-0"
SHEET NO. 39

SPECIAL
APPROVED BY: [Signature]
DATE: June 1955

RD. ROAD DIST. NO.	11111	PROJECT
3	N.C.	-
S. 100 711-163 7		



BAR TYPES
Note All dimensions are out to out

BILL OF MATERIAL
FOR ONE BENT 2 REQUIRE

NO.	QTY	SIZE	REMARKS	REQUIRE
61	2	1/2"	11 x 13	15
62	6	1/2"	11 x 13	13
63	8	1/2"	11 x 13	13
64	9	1/2"	11 x 13	13
65	3	1/2"	11 x 13	23
66	4	1/2"	11 x 13	1
67	2	1/2"	11 x 13	2
68	1	1/2"	11 x 13	1
69	27	1/2"	11 x 13	11
70	23	1/2"	11 x 13	4
71	22	1/2"	11 x 13	34

End Bent No. 1 Lin. Ft. 177'-10"
End Bent No. 2 Lin. Ft. 169'-9"

PROJECT NO. 6376
IREDELL COUNTY
STATION: 63+25.61
END BENTS NO. 1 & NO. 2

STATE OF NORTH CAROLINA
STATE HIGHWAY AND
PUBLIC WORKS COMMISSION
RALEIGH

SUBSTRUCTURE

JUNE 1955

APPROVED BY: [Signature] DATE: 7-5-55
STATE HIGHWAY ENGINEER

SPECIAL APPROVED BY: [Signature] DATE: June 1955
CHECKED BY: [Signature] DATE: [Blank]

