

FED. ROAD DIST. NO.	STATE	STATE PROJ. NO.	FISCAL YEAR	SHEET NO.	TOTAL SHEETS
14	N.C.	6355		7	29
F.A. Grade Cross. Proj. No. F.A.G.H. 37(3)					

INDEX OF SHEETS

Sheet No. 1. Title Page

" " 2. Estimate of Quantities

" " 3. Typical Cross Section of Improvement

" " 4. Plan Sheet

" " 5. Profile

" " 6. Details of Conc. Median Strip

" " 7-8. Cross Sections

" " 9. Spillway, Funnel Type 5

" " 10. Headwall, Std. M-713-R

" " 11. Steel Plate Guard Rail

" " 12. Wire Cable Guard Rail

" " 13-20. Structure

STATE OF NORTH CAROLINA
 STATE HIGHWAY AND PUBLIC WORKS COMMISSION
 PLAN AND PROFILE OF PROPOSED
GASTON COUNTY

Replacing Overhead Bridge on U.S. No 29 & 74 over Southern Railway near Lowell, and necessary pavement for approaches

CONVENTIONAL SIGNS

County Line

Township Line

City or Town Line

Right of Way Line

Survey Line

Property Line

Wire Fence

Board Fence

Present Traveled Road

Railroad

Grade Elevation

Ground Elevation

Pipe Culvert

Box Culvert

Weeds

Telephone or Telegraph Pole

Tower Pole and Line

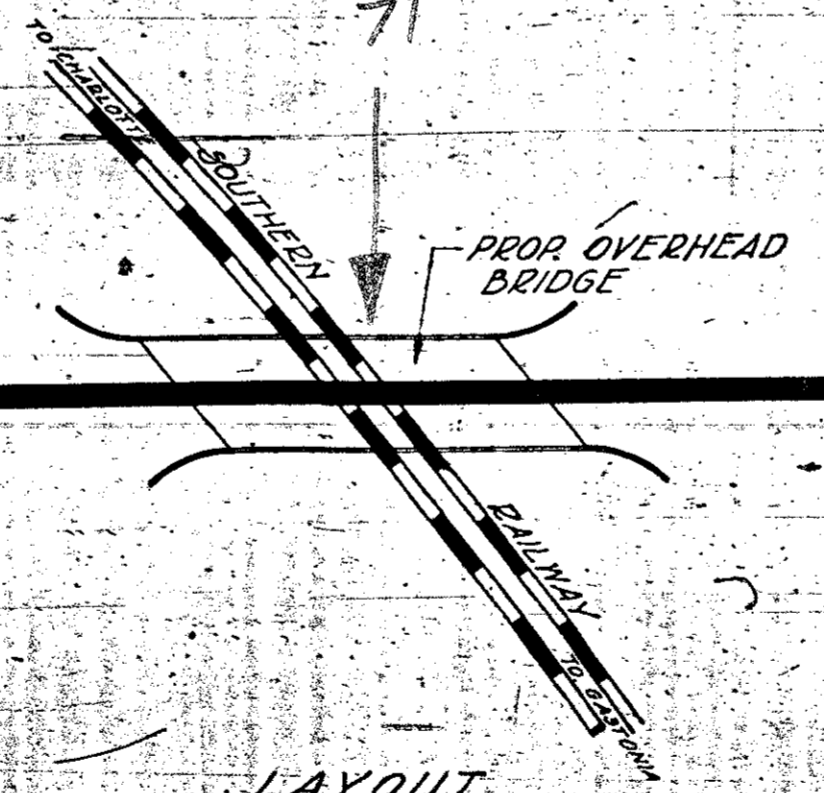
Power Pole

**SHIPPING POINT
 LOWELL, N.C.**

SCALES
 SEE PLANS

Sta. 254+54.8 Begin State Proj. No 6355
 Sta. 254+54.8 Begin F.A. Grade Cross. Proj. No F.A.G.H. 37(3) =
 Sta. 254+54.8 of old State Proj. No 6350, 6351 & 6352 =
 Sta. 254+54.8 of old State Proj. No 635

U.S. 29 & 74
 Exist 40' Conc. Pav't
 to Charlotte
 F.A. Rd #2



U.S. 29 & 74
 Exist 40' Conc. Pav't
 3.6 Mi. to Gastonia
 F.A. Rd #2

Sta. 266+00 End State Proj. No 6355
 Sta. 266+00 End F.A. Grade Cross. Proj. No F.A.G.H. 37(3) =
 Sta. 266+00 of old State Proj.'s No 635, 6350, 6351 & 6352

LAYOUT
 SCALE: 1"=60'

LENGTHS
 Length Roadway F.A. Gr. Cross. Proj. No F.A.G.H. 37(3) - 0.186 Mi.
 Length Structure F.A. Gr. Cross. Proj. No F.A.G.H. 37(3) - 0.230 Mi.
 Total Length State Proj. No 6355 - 0.216 Mi.

Prepared in Office of
 STATE HIGHWAY AND PUBLIC WORKS COMMISSION
 RALEIGH, N.C.

Designed by: L. M. Stephenson
 Drawn by: M. D. Walker, J. G. A. Jr.
 Date: 6-16-39

1939
 State Standard Specifications,
 Approved by Bureau Control.

NOTE: Right of Way on this Project is 100' wide.

APPROVED: [Signature]
 STATE HIGHWAY ENGINEER

RECOMMENDED FOR APPROVAL

DISTRICT ENGINEER
 PUBLIC ROADS ADMINISTRATION
 FEDERAL WORKS AGENCY

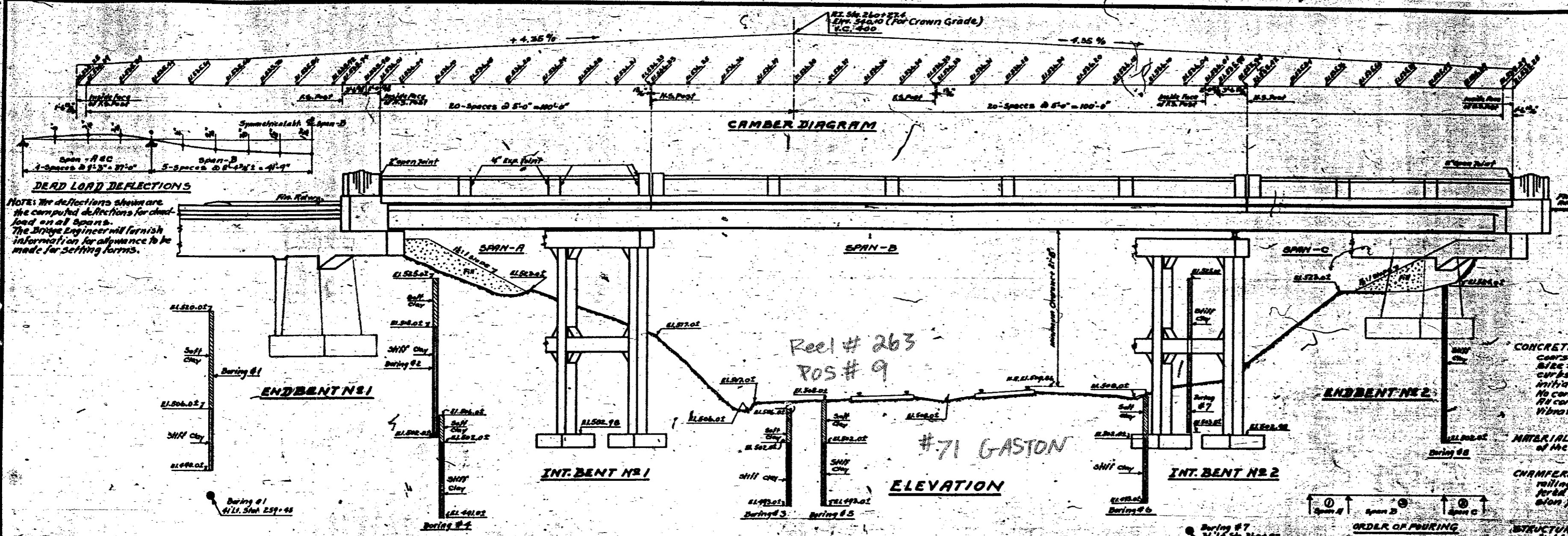
APPROVED:

COMMISSIONER
 PUBLIC ROADS ADMINISTRATION
 FEDERAL WORKS AGENCY

6355

FILE NO.	DATE	PROJECT NO.	NO.	TOTAL
10	N. C.	6355	1	1

F.A. Co. Crossing, May 16, F.A.G.H. 57-61



NOTE: This bridge is to be built on a vertical curve. The handrails, sidewalks and curbs shall conform to the Vertical Curve. Handrails, sidewalks and gutters are to be built in the same manner as shown on the Camber Diagram. The elevations shown on the Camber Diagram are for the top of curb 24" from the centerline. The elevations shown do not include any allowance for road level at location, which will be taken care of by building up on top of the beams. Beams are to be well cambered to the Vertical Curve. The finished structure shall have the elevations shown.

DESIGN DATA

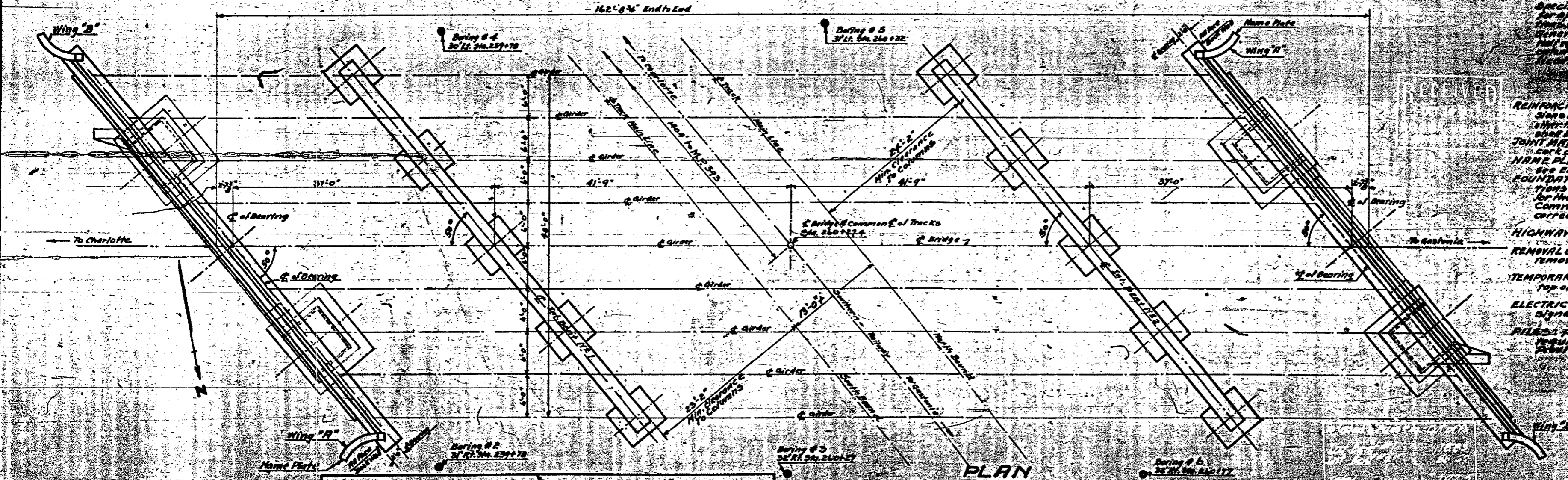
Specifications Assumed Live Load	A. A. S. H. O. H-15
Impact Allowance	See Specifications
Allowance in Tension	16,000 Lbs. per Sq. In.
Structural Steel	18,000 Lbs. per Sq. In.
Concrete in Compression	900 Lbs. per Sq. In.
Concrete in Shear	50 Lbs. per Sq. In.
Equivalent Soil Height of Earth	5.0 Lbs. per Sq. Ft.

GENERAL NOTE

CONCRETE: Class "A" Concrete shall be used throughout. Standard Specification for concrete shall be used. The concrete shall be placed in layers not exceeding 18 inches in thickness. The concrete shall be consolidated by mechanical vibration. See Specifications.

MATERIAL AND WORKMANSHIP: All material and workmanship shall conform to the North Carolina State Highway and Public Works Commission Specifications.

CHAMFERS: All exposed corners of concrete shall be chamfered, except at railings and expansion joints. Corners, soffits and feet shall be chamfered, except where otherwise noted. Chamfers and expansion joint corners shall be chamfered at 45°.



STRUCTURAL STEEL: Structural steel shall be given one 1/8 inch coat of field coat of red lead and forty two field coats of aluminum paint. See Specifications. Detail drawings for structural steel shall be prepared for approval. No work shall be done until the steel has been approved. The steel shall be placed in the position shown on the plans. The steel shall be placed in the position shown on the plans. The steel shall be placed in the position shown on the plans.

REINFORCING STEEL: All reinforcing steel shall be deformed bars. The bars shall be placed in the position shown on the plans. The bars shall be placed in the position shown on the plans. The bars shall be placed in the position shown on the plans.

FOUNDATION DATA: The location and foundation data and all other data for the foundation shall be given to the contractor and are to be checked for the convenience of the contractor, but the State Highway and Public Works Commission assumes no responsibility for the contractor's interpretation of the correct any of the information given. See Specifications.

HIGHWAY TRAFFIC: By method of handling traffic, see Specifications.

REMOVAL OF EXISTING STRUCTURE: The existing structure shall be removed. See Special Provisions.

TEMPORARY CLEARANCE: A minimum under clearance of 20 feet over top of high rail shall be provided during construction.

ELECTRIC WARNING SIGNALS: The existing electric warning signals shall be removed. See Special Provisions.

PROJECT NO. 6355
GASTON COUNTY
STATION 260+27.4
BRIDGE # 71

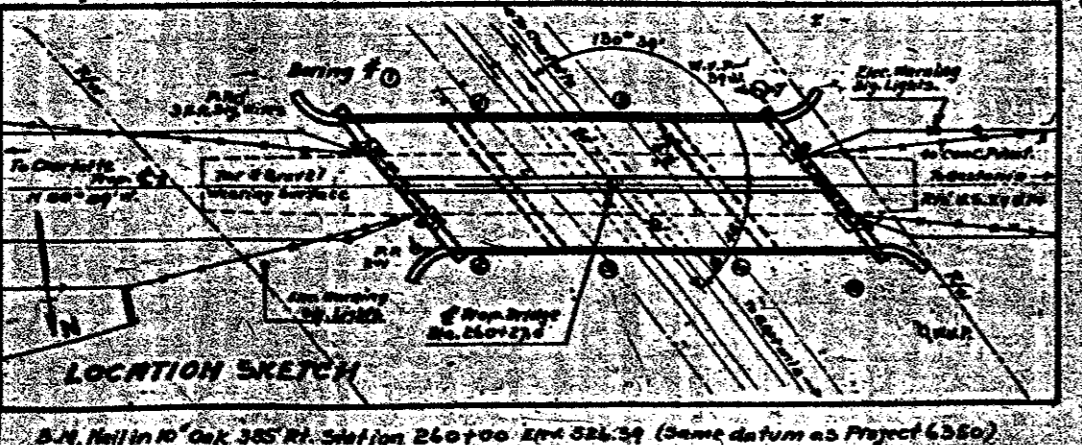
BILL OF MATERIAL

CLASS OF MATERIAL	QUANTITY	UNIT	ESTIMATED COST	REMARKS
Superstructure	222.8	cu. yds.	43,421	233,800
Substructure	38.9	cu. yds.	5,152	6,700
Abutment #1	61.0	cu. yds.	8,207	
Abutment #2	40.8	cu. yds.	5,272	
INT. BENT #1	38.9	cu. yds.	5,056	
INT. BENT #2	38.9	cu. yds.	5,056	
TOTAL	422.9	cu. yds.	70,212	233,800

Includes 2571 Lbs. galvanized Reinforcing Steel to be paid for as Rein. Steel.

DIVISION OF CLASS "A" CONCRETE

CLASS OF CONCRETE	QUANTITY	UNIT	ESTIMATED COST
Class "A" Concrete	422.9	cu. yds.	70,212



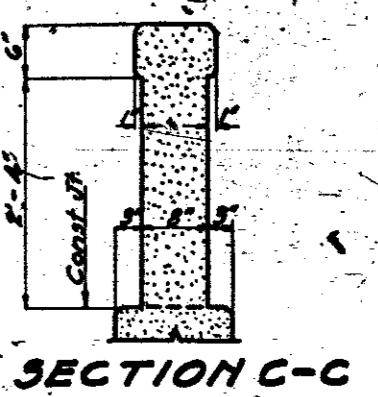
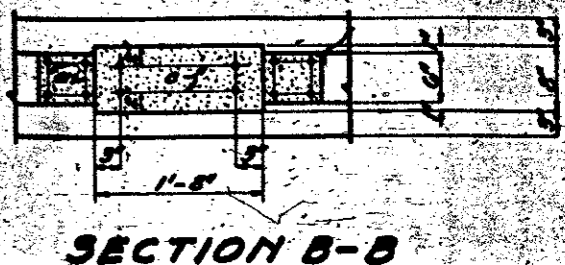
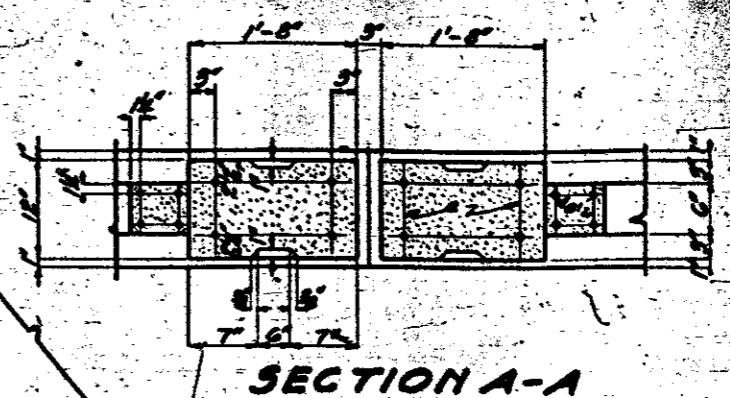
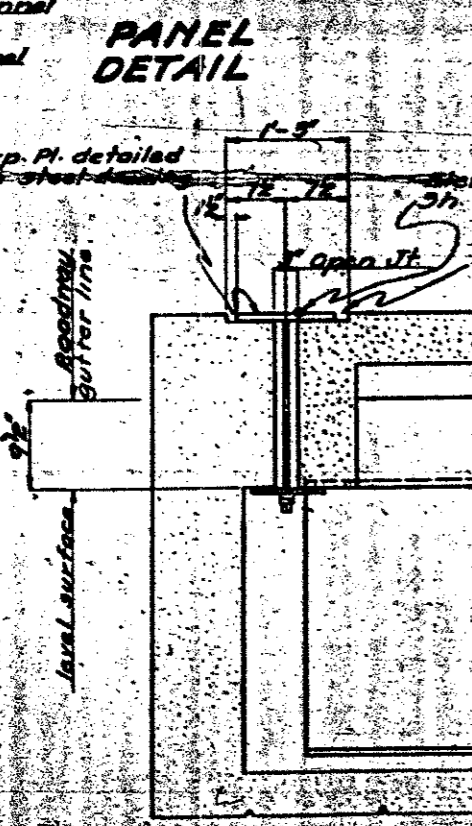
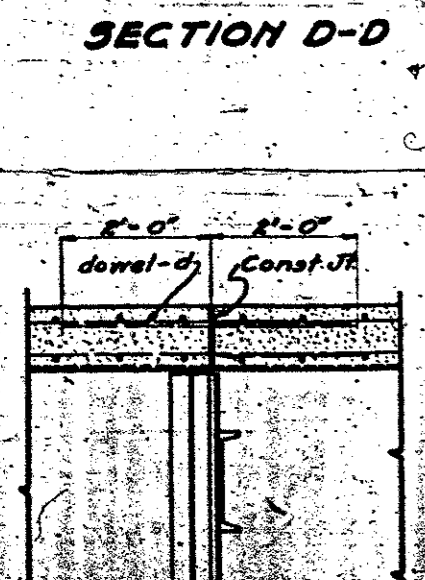
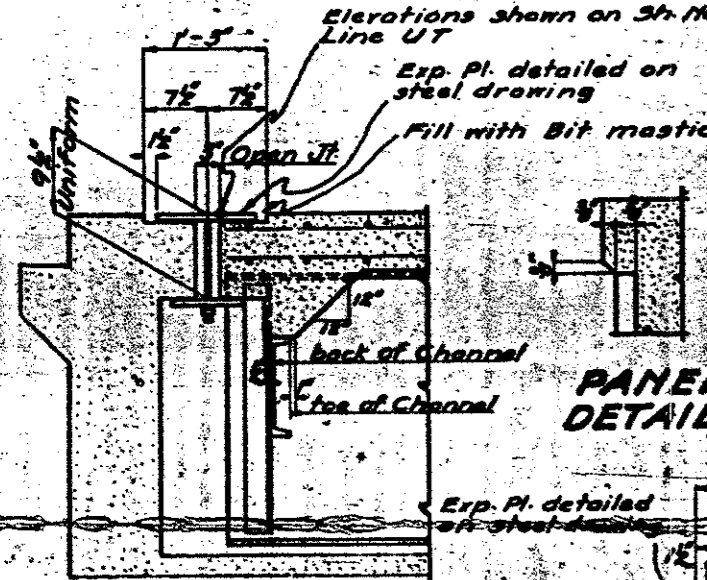
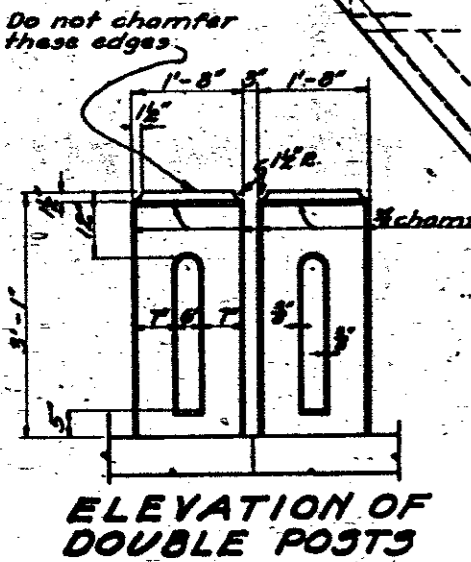
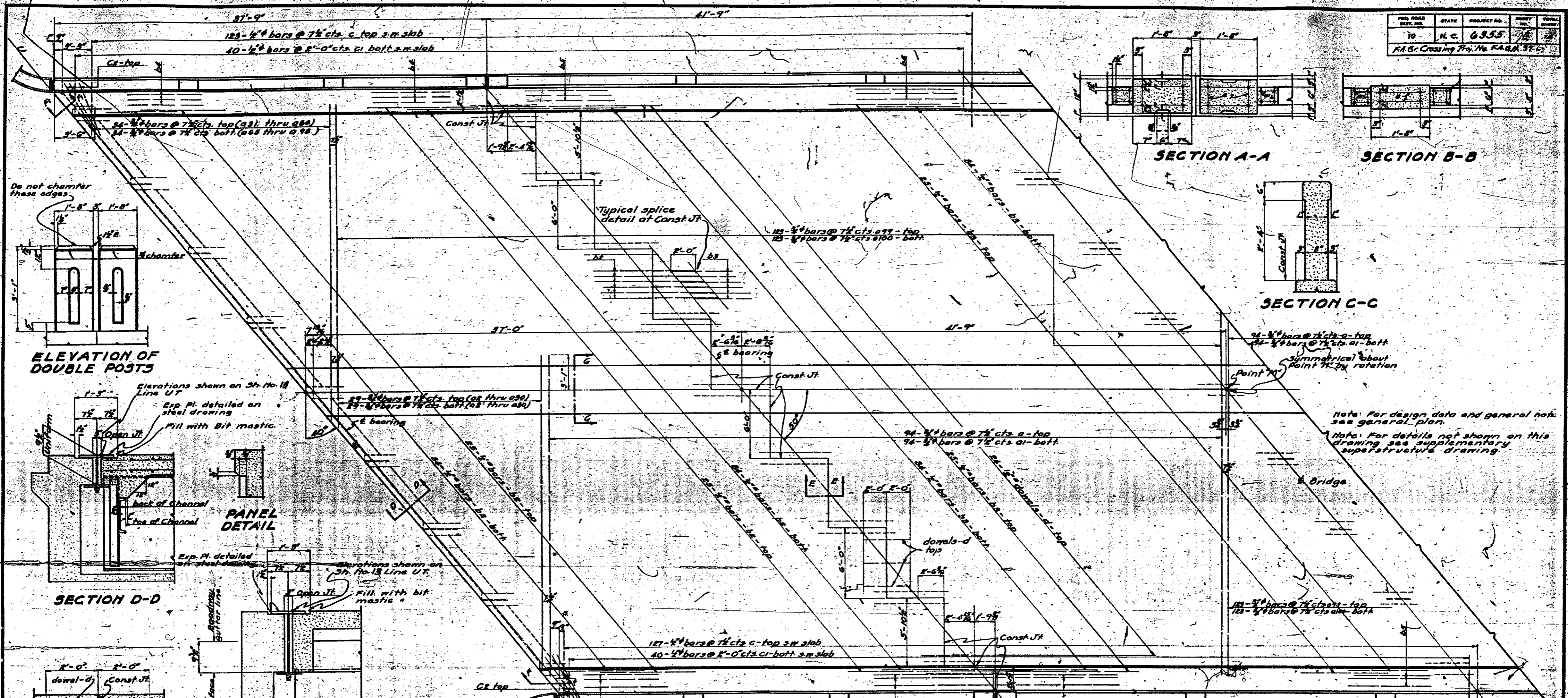
STATE OF NORTH CAROLINA
STATE HIGHWAY AND
PUBLIC WORKS COMMISSION
GENERAL PLAN
LOWELL OVERHEAD
SOUTHERN RAILWAY
MAY-1934

SPECIAL
DATE
BY
CHECKED
APPROVED

Revised for Quantities 6-12-37, G. D. Reagin, Station 260+27.4

FED. ROAD DIST. NO.	STATE	PROJECT NO.	SHEET NO.	TOTAL SHEETS
10	N. C.	6955	76	87

R.A.G. Crossing Proj. No. RAQM 37-65



Note: For design data and general notes see general plan.
 Note: For details not shown on this drawing see supplementary superstructure drawing.

PROJECT NO. 6955
 GASTON COUNTY
 STA. 260+27.4

SPECIAL	DATE
Checked by [Signature]	May 1937
Designed by [Signature]	May 1937
Drawn by [Signature]	May 1937
Checked by [Signature]	June 1937

STATE OF NORTH CAROLINA
 STATE HIGHWAY AND
 PUBLIC WORKS COMMISSION
 SUPERSTRUCTURE DETAILS
 LOWELL OVERHEAD
 SOUTHERN RAILWAY
 MAY 1937

APPROVED BY	DATE	SCALE	PLAN NO.
[Signature]	May 1937		

HALF ELEVATION

**BILL OF MATERIAL
THREE SPANS**

Bar No	Size	Type	Dimensions			Weight	Bar No	Size	Type	Dimensions			Weight		
			a	b	c					a	b	c			
0188	3/8	1	27'-6"	27'-6"	12"	25'	065	2	3/8	str	26'-9"		81		
0189	3/8	str	27'-8"			7813	066				26'-8"		79		
02	2	3/8	str	27'-8"			067				25'-5"		76		
03			26'-6"				068				24'-8"		72		
04			25'-3"				069				23'-11"		70		
05			24'-0"				070				22'-5"		67		
06			22'-8"				071				21'-8"		65		
07			21'-6"				072				20'-11"		63		
08			20'-9"				073				20'-2"		61		
09			19'-6"				074				19'-5"		59		
10			18'-3"				075				18'-8"		56		
11			17'-0"				076				17-11"		54		
12			15'-9"				077				17-11"		54		
13			14'-6"				078				16'-5"		52		
14			13'-3"				079				15'-8"		50		
15			12'-0"				080				15'-0"		47		
16			10'-9"				081				14'-3"		45		
17			9'-6"				082				13'-6"		43		
18			8'-3"				083				12'-9"		41		
19			7'-0"				084				12'-2"		39		
20			5'-9"				085				11'-5"		37		
21			4'-6"				086				10'-8"		35		
22			3'-3"				087				9'-1"		33		
23			2'-0"				088				8'-4"		31		
24			0'-9"				089				7'-7"		29		
25			0'-0"				090				7'-0"		27		
26			9'-3"				091				6'-3"		25		
27			8'-0"				092				5'-6"		23		
28			6'-9"				093				4'-9"		21		
29			5'-6"				094				4'-2"		19		
30			4'-3"				095				3'-5"		17		
31			3'-0"				096				2'-8"		15		
32			1'-9"				097				2'-1"		13		
33			0'-0"				098				1'-4"		11		
34			27'-9"	26'-9"	12'	25'	099	2 1/2	3/8	str	25'-2"	22'-8"	12"	25'	9389
35			26'-3"	25-3"			100	2 1/2	3/8	str	24'-6"				9033
36			25'-6"	24'-6"											
37			24'-9"	23'-9"											
38			23'-3"	22'-3"											
39			22'-6"	21'-6"											
40			21'-9"	20'-9"											
41			21'-0"	20'-0"											
42			20'-3"	19'-3"											
43			19'-6"	18'-6"											
44			18'-9"	17'-9"											
45			18'-0"	17'-0"											
46			17'-3"	16'-3"											
47			16'-6"	15'-6"											
48			15'-9"	14'-9"											
49			15'-0"	14'-0"											
50			14'-3"	13'-3"											
51			13'-6"	12'-6"											
52			12'-9"	11'-9"											
53			12'-0"	11'-0"											
54			11'-3"	10'-3"											
55			10'-6"	9'-6"											
56			9'-9"	8'-9"											
57			9'-0"	8'-0"											
58			8'-3"	7'-3"											
59			7'-6"	6'-6"											
60			6'-9"	5'-9"											
61			6'-0"	5'-0"											
62			5'-3"	4'-3"											
63			4'-6"	3'-6"											
64			3'-9"	2'-9"											
65			3'-0"	2'-0"	12'	25'	10								

*Includes 2597 lbs galv steel to be paid for as reinf steel.
**Concrete in Center Curb not included

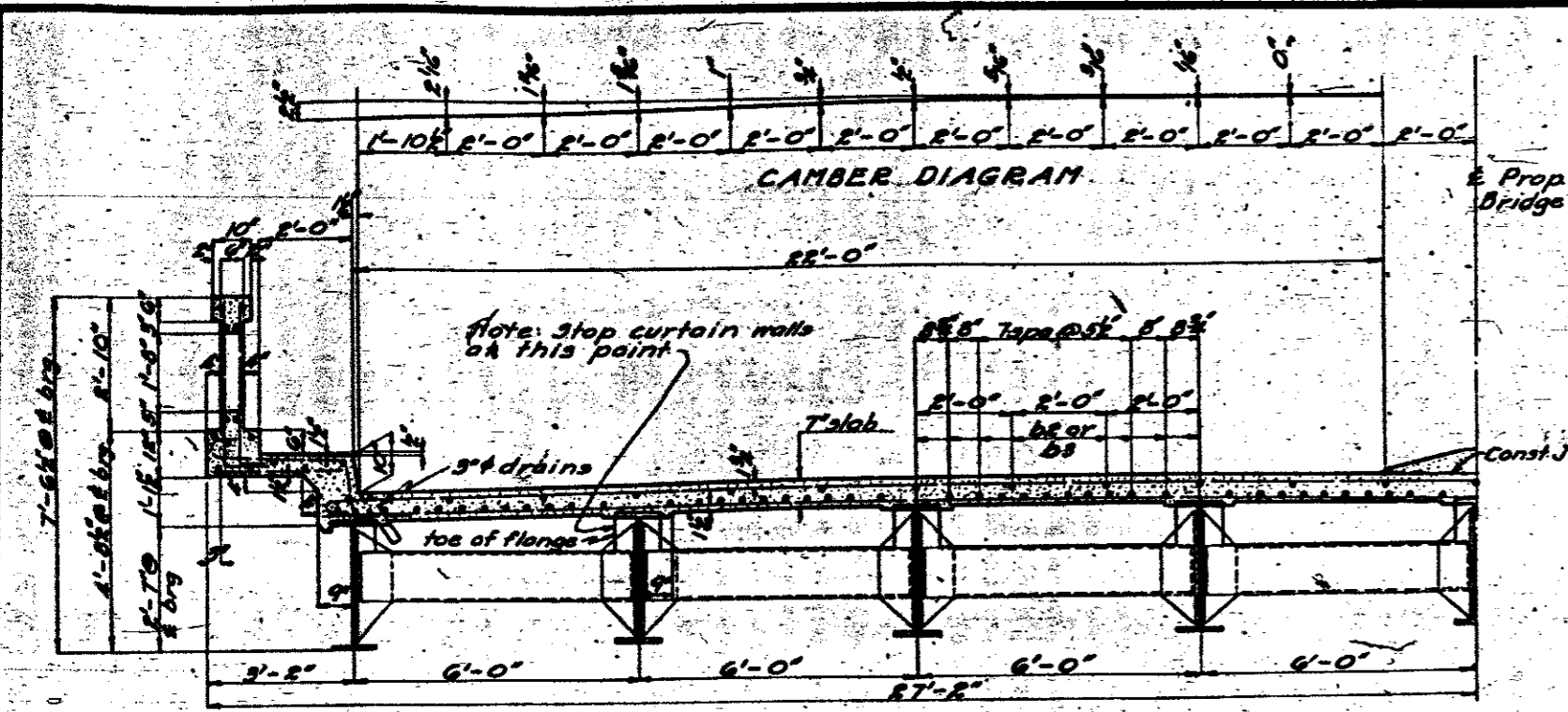
Note: For design data and general notes see general plan.
Note: For details not shown on this drawing see supplementary superstructure drawing.

**PROJECT NO. 6355
GASTON COUNTY
STA. 260+27.4**

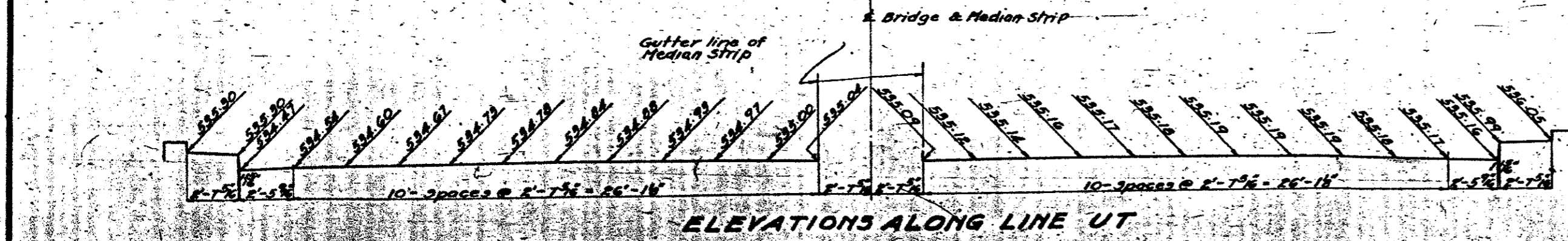
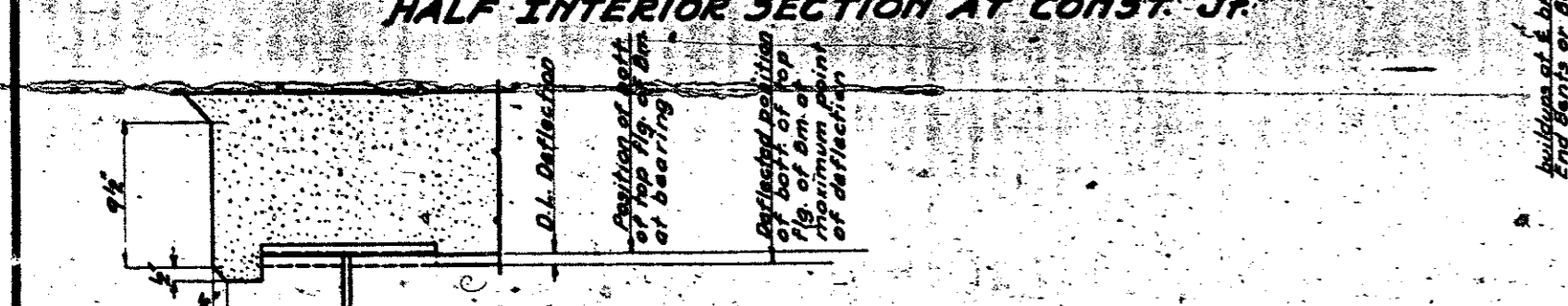
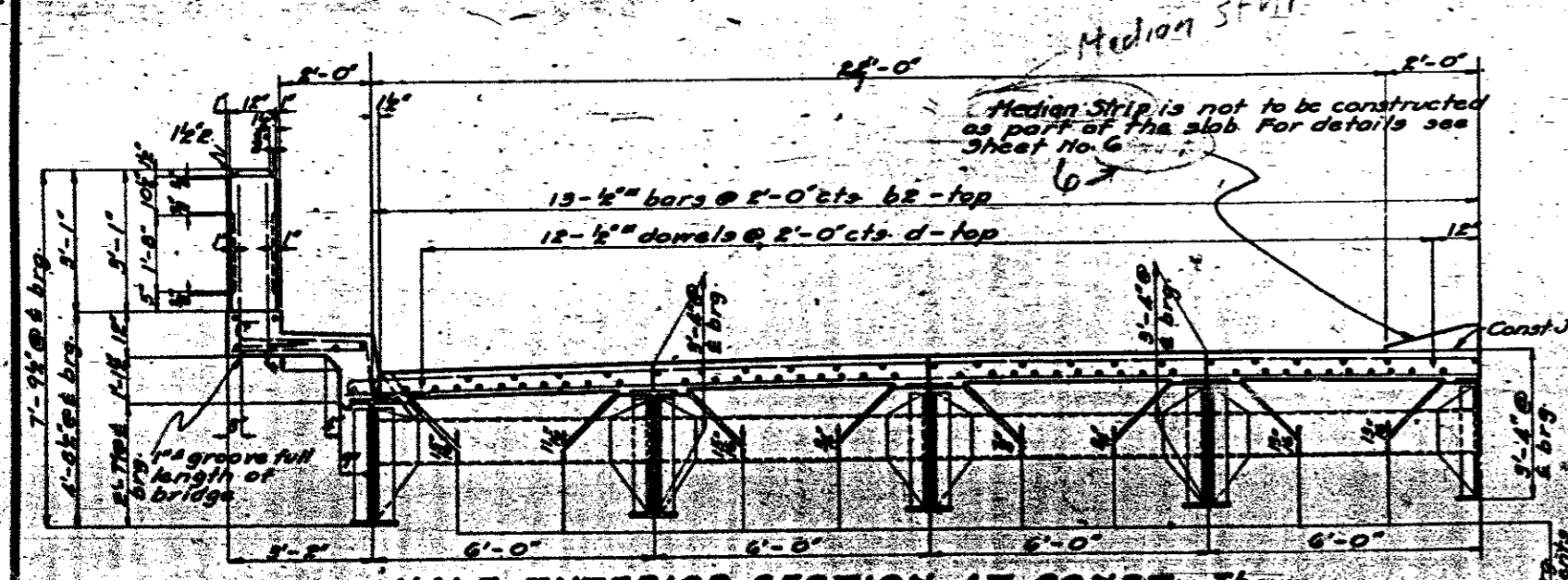
STATE OF NORTH CAROLINA
STATE HIGHWAY AND
PUBLIC WORKS COMMISSION

**SUPERSTRUCTURE DETAILS
LOWELL OVERHEAD
SOUTHERN RAILWAY
MAY 1939**

PLATE NO.



Note: The 3'-4" dimension shown in Half Section of Const. Jt. applies to all beams at bearing. Additional buildup between bearing points will be necessary for components for dead load deflection.



SPECIAL

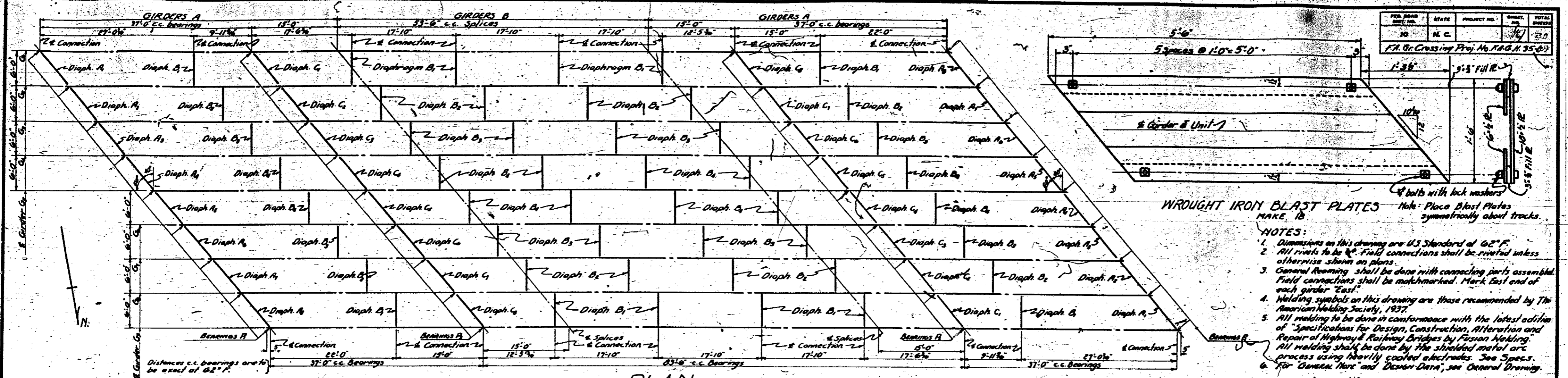
DESIGNED BY *[Signature]* DATE *[Date]*

DRAWN BY *[Signature]* DATE *[Date]*

CHECKED BY *[Signature]* DATE *[Date]*

FED. ROAD DIST. NO.	STATE	PROJECT NO.	SHEET NO.	TOTAL SHEETS
10	N. C.		167	230

F.A. Gr. Crossing Proj. No. F.A.B.N. 35-47

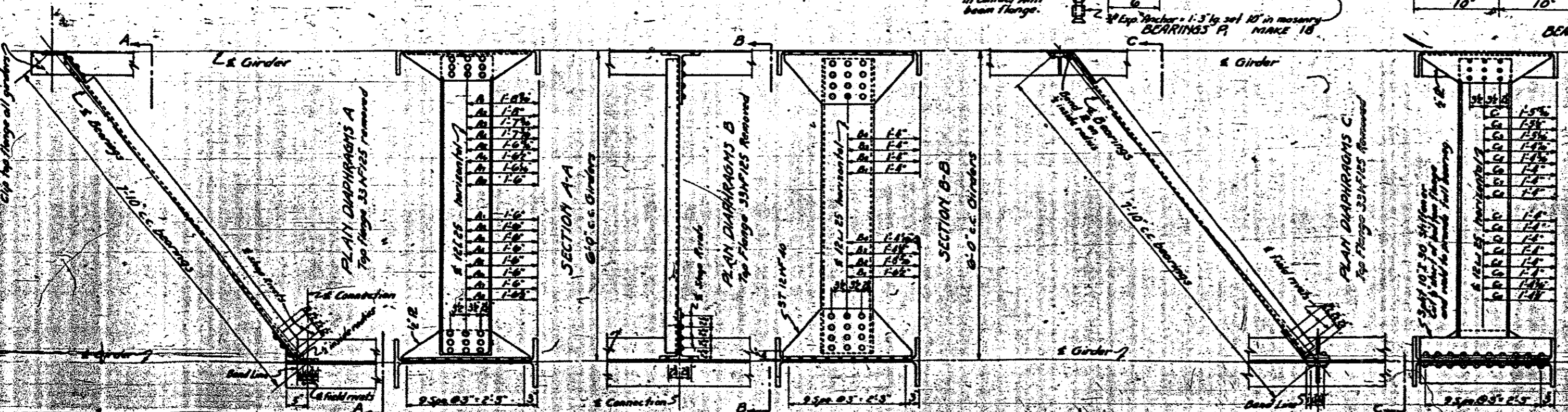
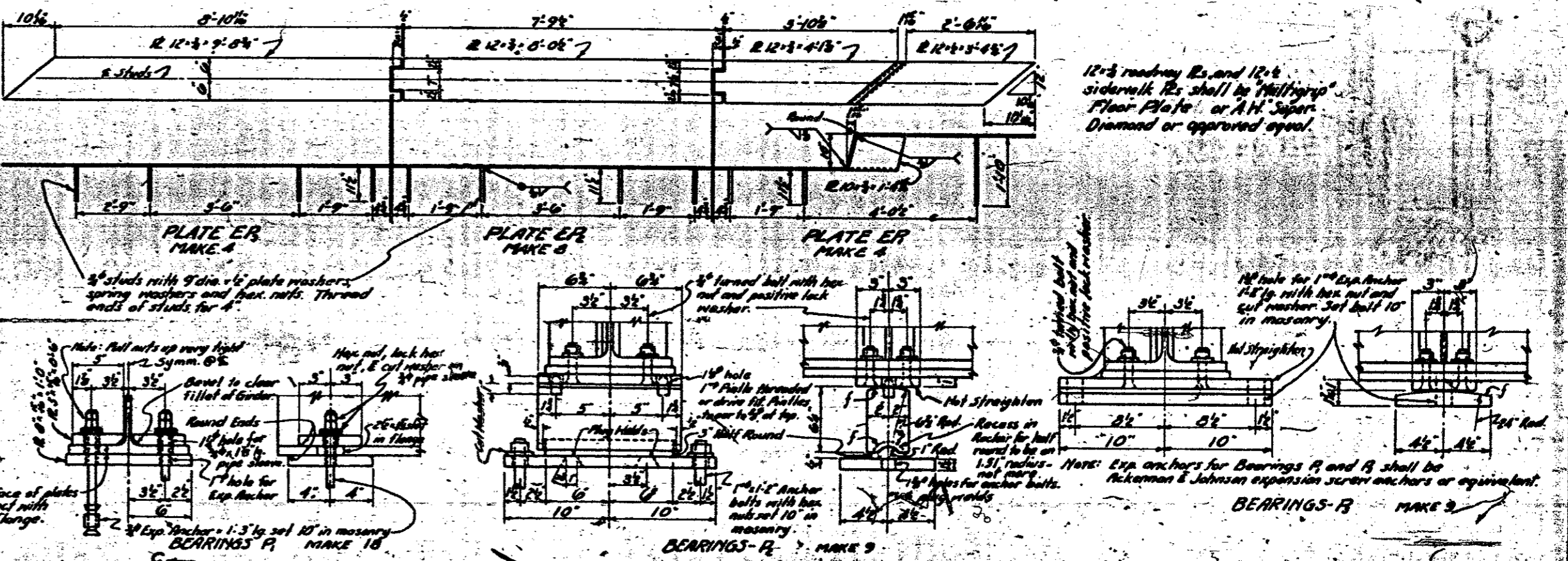
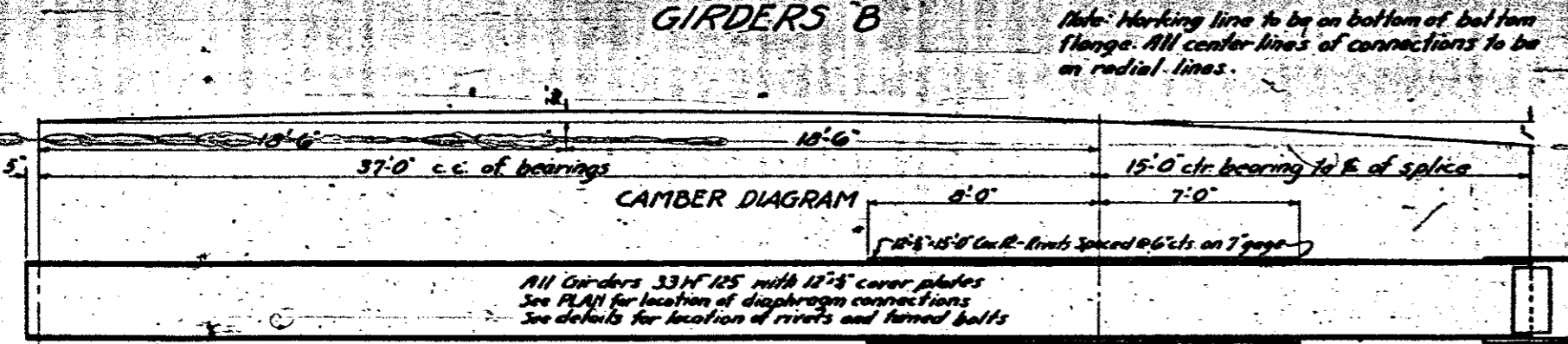
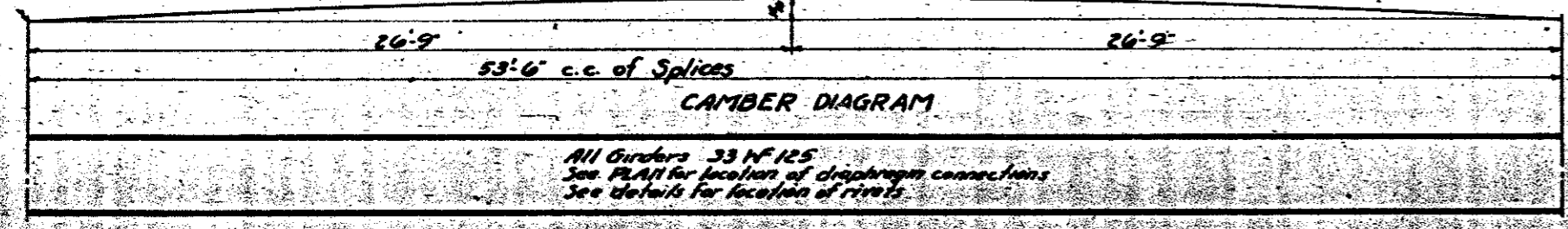


WROUGHT IRON BLAST PLATES
MAKE 13

Note: Place Blast Plates symmetrically about tracks.

NOTES:

1. Dimensions on this drawing are U.S. Standard of 62°F.
2. All rivets to be 4". Field connections shall be riveted unless otherwise shown on plans.
3. General Rooming shall be done with connecting parts assembled. Field connections shall be matchmarked. Mark East end of each girder "East".
4. Welding symbols on this drawing are those recommended by The American Welding Society, 1937.
5. All welding to be done in conformance with the latest edition of "Specifications for Design, Construction, Alteration and Repair of Highway & Railway Bridges by Fusion Welding". All welding shall be done by the shielded metal arc process using heavily coated electrodes. See Specs. for General Note and Design Data; see General Drawing.



Approx. Weights:

- Structural Steel Lbs. 233,800*
- Wrought Iron Blast Plates Lbs. 6,700

* 2" Splice (see details) for Bearings B and B1 to be included in lump sum bid for structural steel.

Blast plates to be painted same as structural steel.

PROJECT NO. 6355
GASTON COUNTY
STA. 260+27.4

STATE OF NORTH CAROLINA
STATE HIGHWAY AND
PUBLIC WORKS COMMISSION

STRUCTURAL STEEL DETAILS
FOR
LOWELL OVERHEAD BRIDGE
OVER
SOUTHERN RAILWAY
MAY, 1939

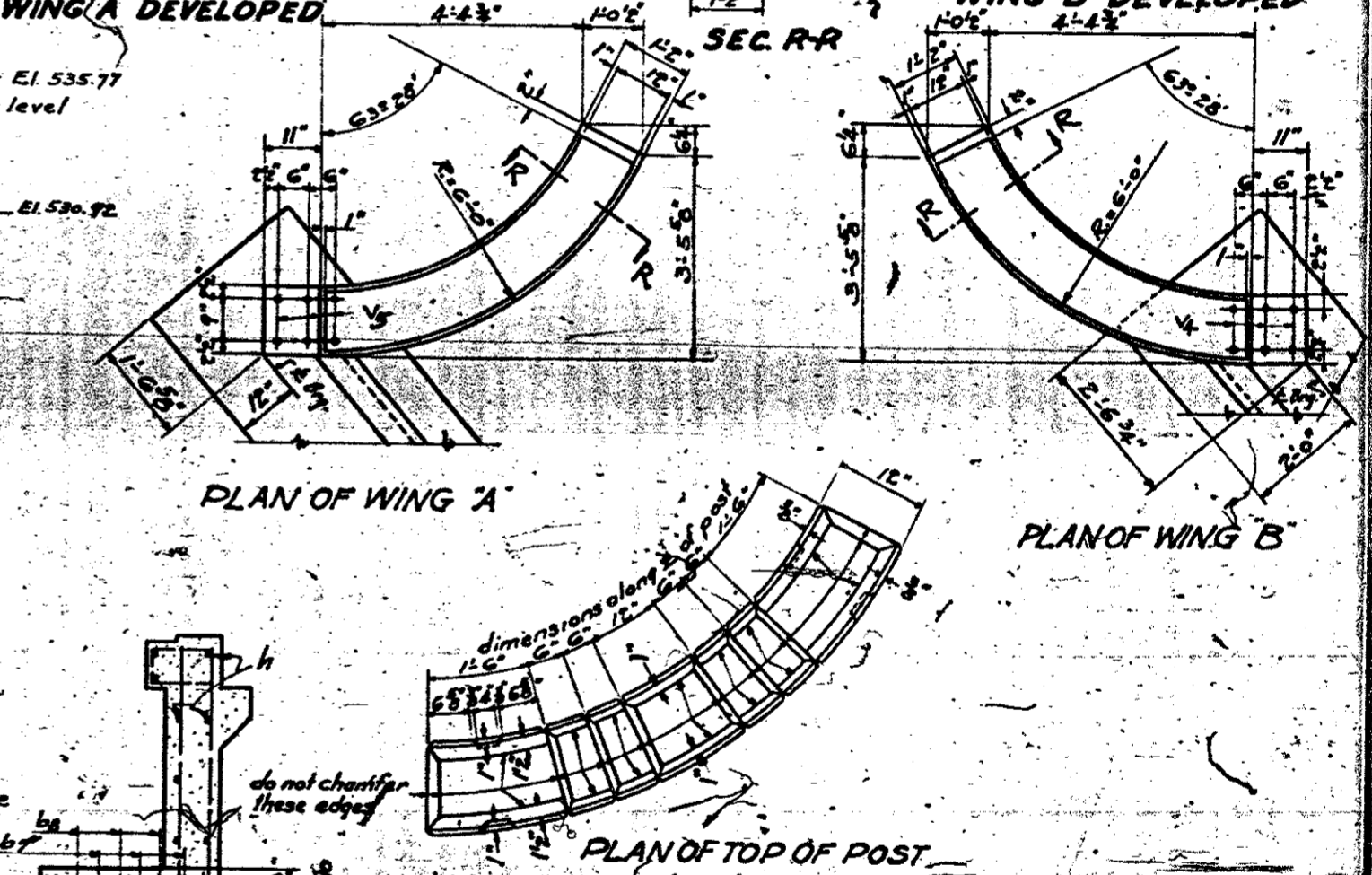
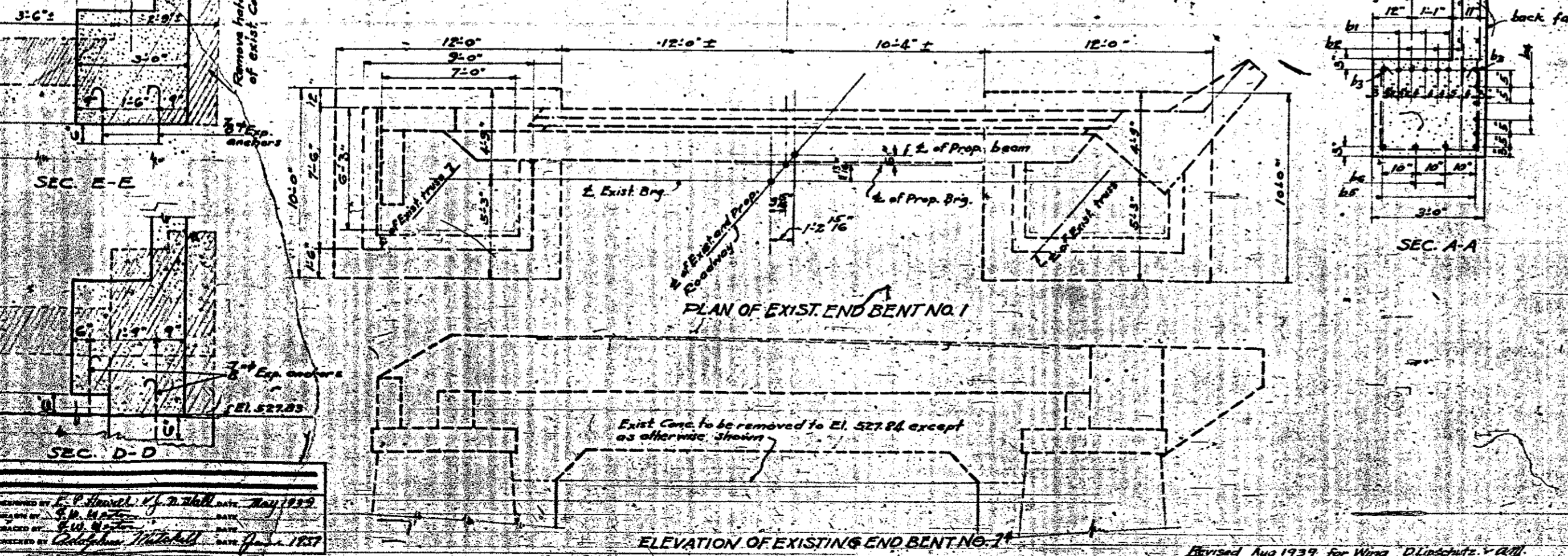
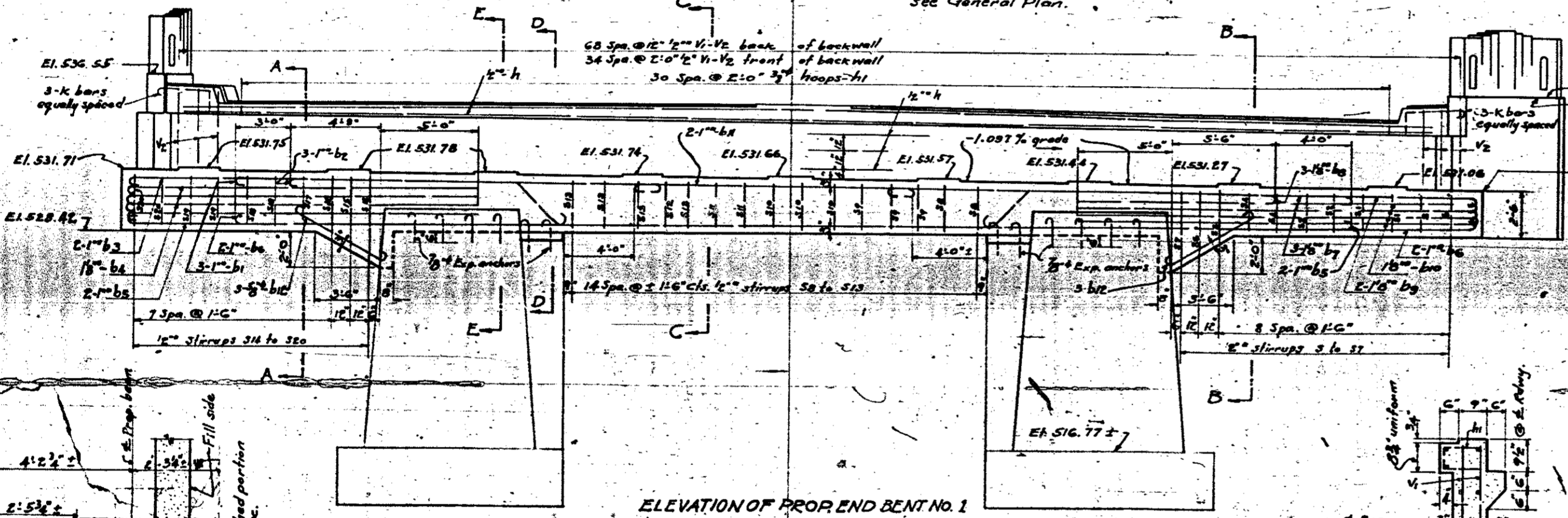
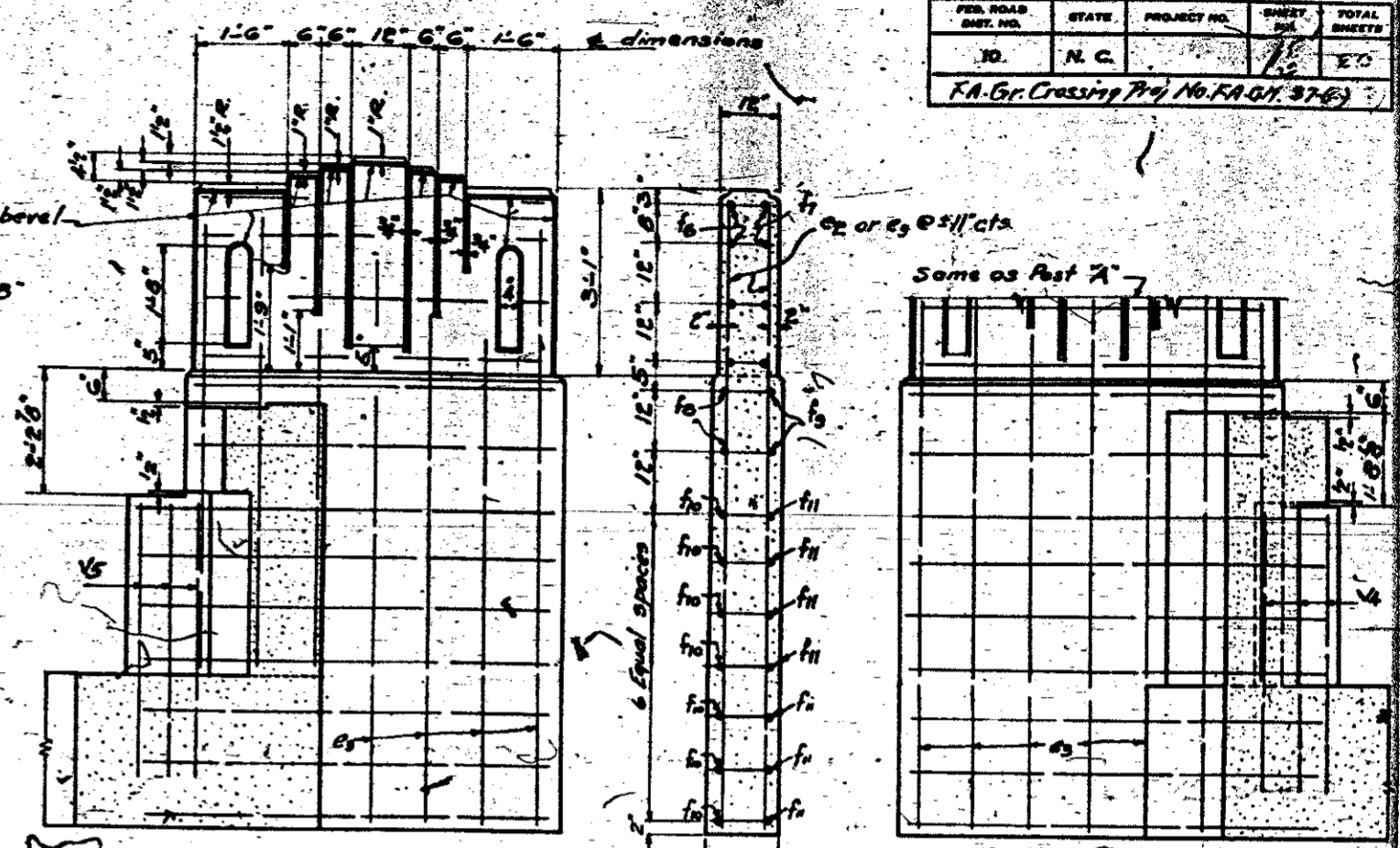
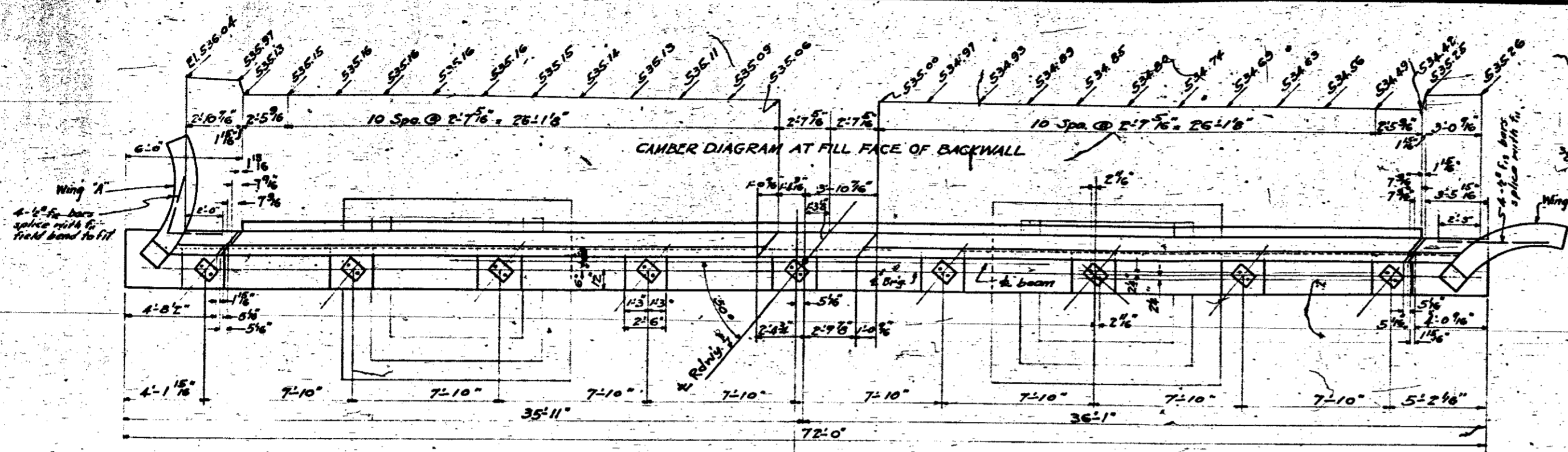
DESIGNED BY: *Delphin Smith* DATE: May 1939
DRAWN BY: *Delphin Smith* DATE:
CHECKED BY: *J.H. Ketchum* DATE: May 1939

DESIGN OF BEARINGS B AND B1 BY: *Delphin Smith*

Revised for bearing B, E-11-37

PLAN NO.

FED. ROAD DIST. NO.	STATE	PROJECT NO.	SHEET NO.	TOTAL SHEETS
10.	N. C.		12	12
F.A. Gr. Crossing Proj. No. FA-07-37-63				



PROJECT NO. 6355
GASTON COUNTY
STA. 260+27.4

STATE OF NORTH CAROLINA
STATE HIGHWAY AND PUBLIC WORKS COMMISSION

DETAILS OF END BENT NO. 1 OR
LOWELL OVERHEAD
SOUTHERN RAILWAY

MAY 1939

DESIGNED BY: [Signature]
CHECKED BY: [Signature]

PLANNED BY: [Signature]

STATE HIGHWAY ENGINEER

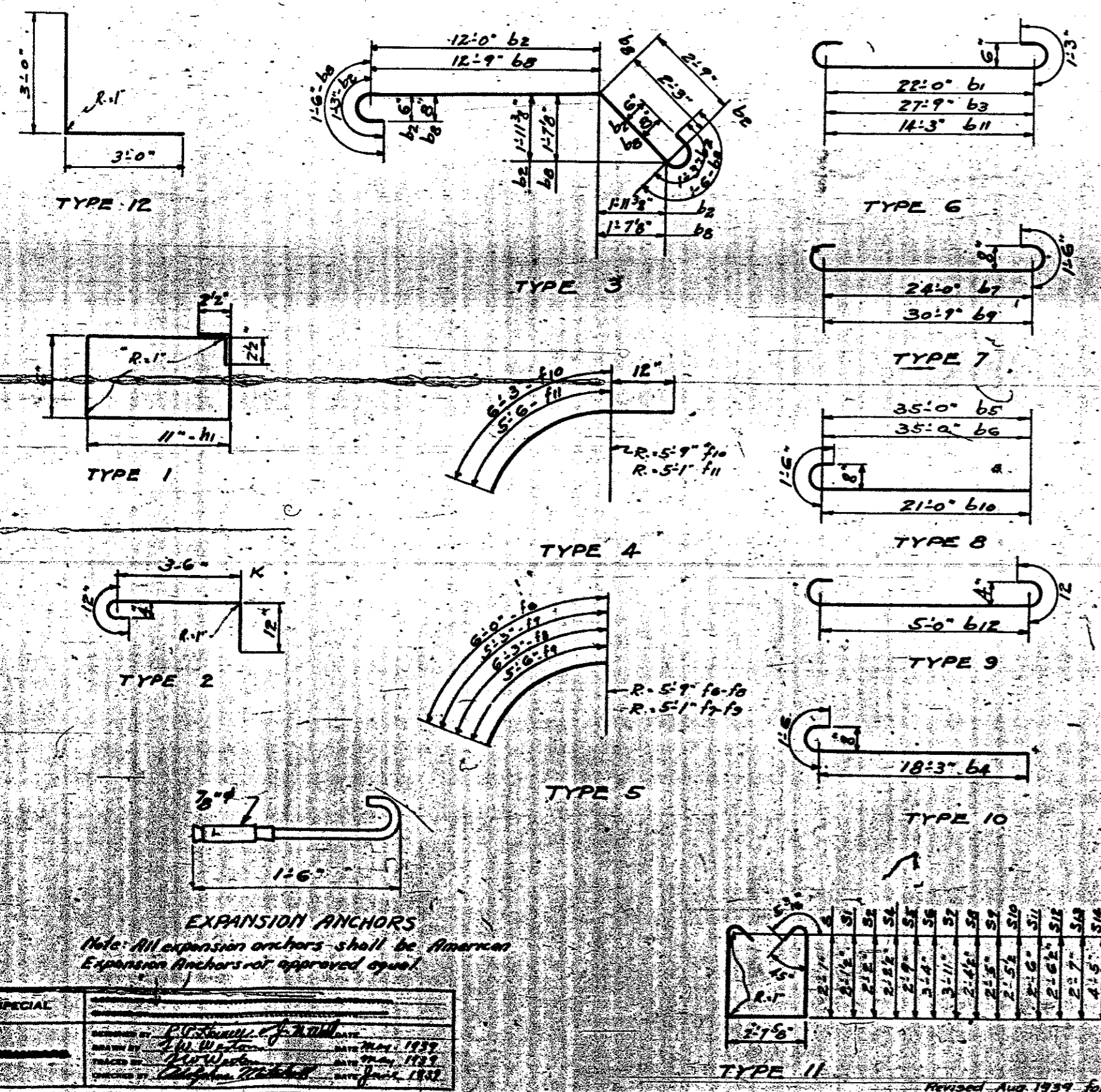
SPECIAL

DESIGNED BY: L. P. Howell, J. D. Hill, DATE: May 1939

CHECKED BY: [Signature] DATE: [Signature]

PLANNED BY: [Signature] DATE: [Signature]

Revised Aug 1939 for Wing D Lipschutz & Bell



BILL OF MATERIAL FOR ENDBENT NO. 1 OR 2

Bar	Size	No.	Type	Length	Weight	Bar	Size	No.	Type	Length	Weight
b1	1"	3	G	24'-6"	250	S6	1/2"	1	II	10'-2"	9
b2	1"	3	G	17'-3"	176	S7	1/2"	1	II	11'-4"	10
b3	1"	2	G	30'-3"	206	S8	1/2"	2	II	8'-3"	14
b4	1 1/8"	4	G	19'-9"	340	S9	1/2"	3	II	8'-4"	21
b5	1"	4	G	36'-6"	496	S10	1/2"	3	II	8'-5"	21
b6	1"	4	G	36'-6"	496	S11	1/2"	2	II	8'-6"	14
b7	1 1/8"	3	G	27'-0"	349	S12	1/2"	2	II	8'-7"	15
b8	1 1/8"	3	G	18'-0"	232	S13	1/2"	3	II	8'-8"	22
b9	1 1/8"	2	G	33'-9"	291	S14	1/2"	1	II	12'-4"	10
b10	1 1/8"	4	G	22'-6"	388	S15	1/2"	1	II	11'-4"	10
b11	1"	2	G	16'-9"	114	S16	1/2"	1	II	10'-2"	9
b12	5/8"	6	G	7'-0"	44	S17	1/2"	1	II	9'-0"	8
v1	1/2"	94	Str.	4'-6"	357	S18	1/2"	2	II	9'-1"	15
v2	1/2"	10	Str.	6'-3"	53	S20	1/2"	2	II	9'-2"	16
v4	1/2"	6	Str.	4'-6"	23	S26	1/2"	2	II	9'-3"	16
v5	1/2"	6	Str.	4'-6"	23	S28	1/2"	18	Str.	10'-1"	121
h	1/2"	24	Str.	24'-9"	505						
h1	3/8"	31		3'-3"	38						
f13	1/2"	4	Str.	6'-0"	20						
k	1/2"	6		5'-6"	28						
e2	1/2"	10	Str.	7'-7"	51						
f6	1/2"	8		8'-0"	32						
f7	1/2"	8		8'-3"	28						
f8	1/2"	4		6'-3"	21						
f9	1/2"	4		5'-6"	19						
f10	1/2"	14		7'-3"	86						
f11	1/2"	14		6'-6"	77						
f12	1/2"	4		6'-0"	20						
s	1/2"	2	II	7'-8"	13						
s1	1/2"	2	II	7'-9"	13	Reinforcing Steel Lbs.				53	56
s2	1/2"	2	II	7'-10"	13	Conc. Class A Cu. Yds.					399
s4	1/2"	2	II	7'-11"	13	7/8" x 1/2" Expansion Anchors No.					24
s5	1/2"	1	II	9'-0"	8						

NOTES:-
 For General Note and Design Data, see General Drawing.
 Holes to be drilled into old concrete with 1/2" hand drill or 1/4" power drill at points indicated on plans and expansion anchors inserted. Where new concrete is to be bonded to old, the connecting surface of the old concrete shall be thoroughly roughened, cleaned of loose material, wetted and flushed with 1:2 cement mortar immediately before pouring new concrete. The entire cost of this work including expansion anchors complete in place shall be included in the unit price bid for the several pay items.

PROJECT NO. 6355
 GASTON COUNTY

STATION 260+27.4

DIVISION OF CLASS "A" CONC.
 Max. size of coarse aggregate No. 7 1.4 Cu. Yds.
 Max. size of coarse aggregate No. 3 38.5 Cu. Yds.
 Total 39.9 Cu. Yds.

STATE OF NORTH CAROLINA
 STATE HIGHWAY AND
 PUBLIC WORKS COMMISSION

**BILL OF MATERIAL ENDBENT
 NO. 1 OR 2 AND BAR DETAILS**

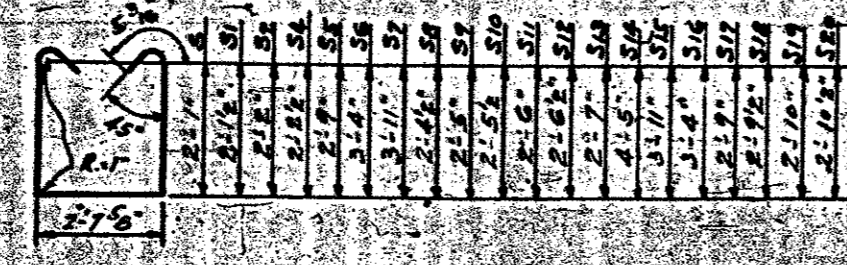
LOWELL OVERHEAD
 SOUTHERN RAILWAY

MAY 1939

W. W. ...
 W. W. ...

PLAN NO. ...

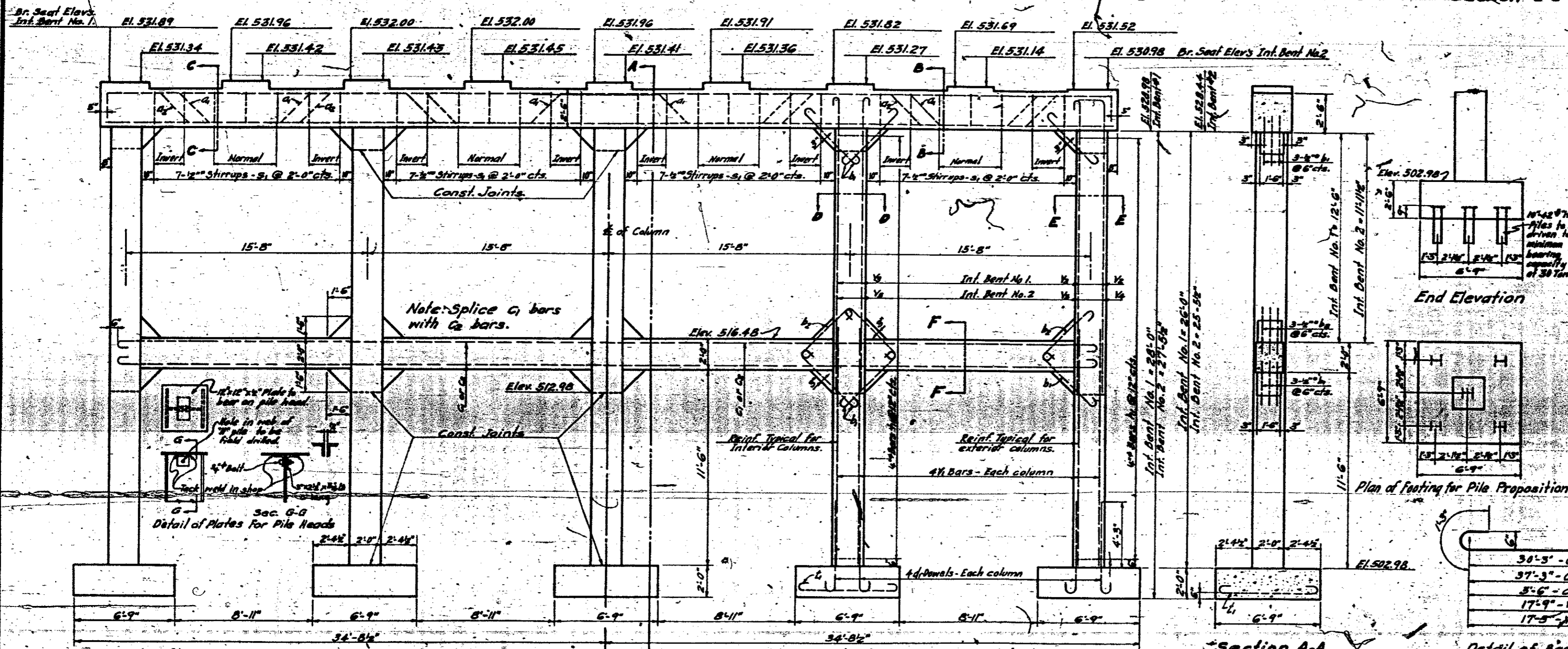
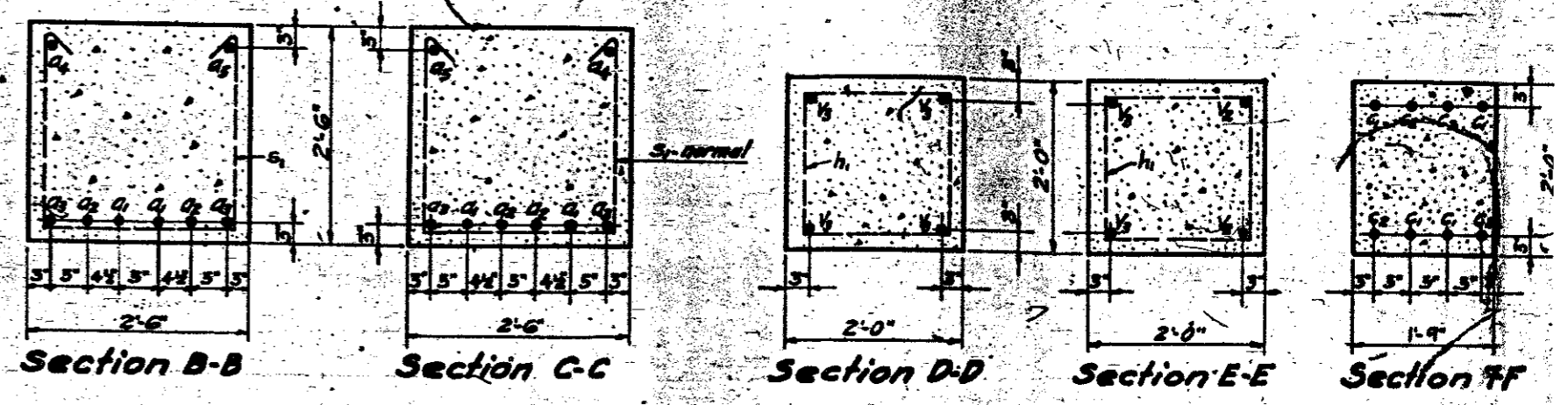
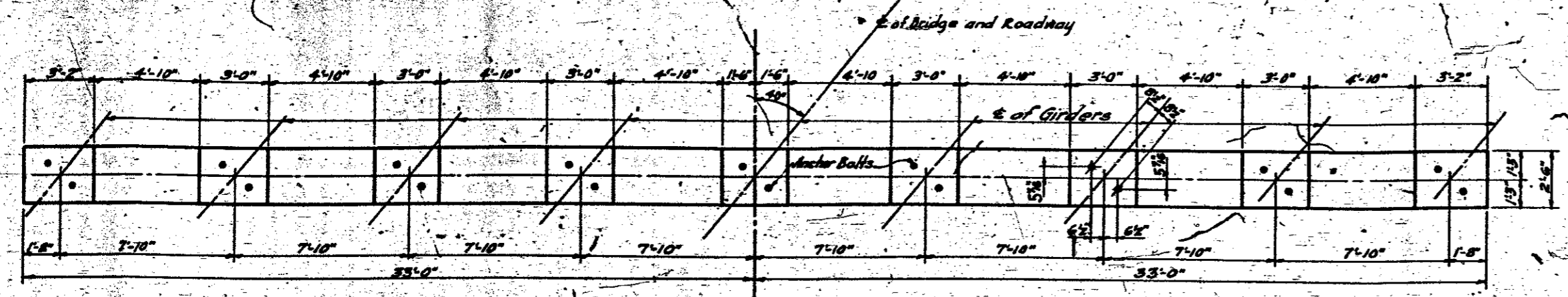
EXPANSION ANCHORS
 Note: All expansion anchors shall be American Expansion Anchors or approved equal.



TYPE 11 Revised Aug. 1939 for Wm. D. Lipschultz - C.M.

FED. ROAD DIST. NO.	STATE	PROJECT NO.	SHEET NO.	TOTAL SHEETS
10	N. C.	6355	716	725

K.A. Co. Crossing Proj. No. R.A. 5. H. 4 (1)



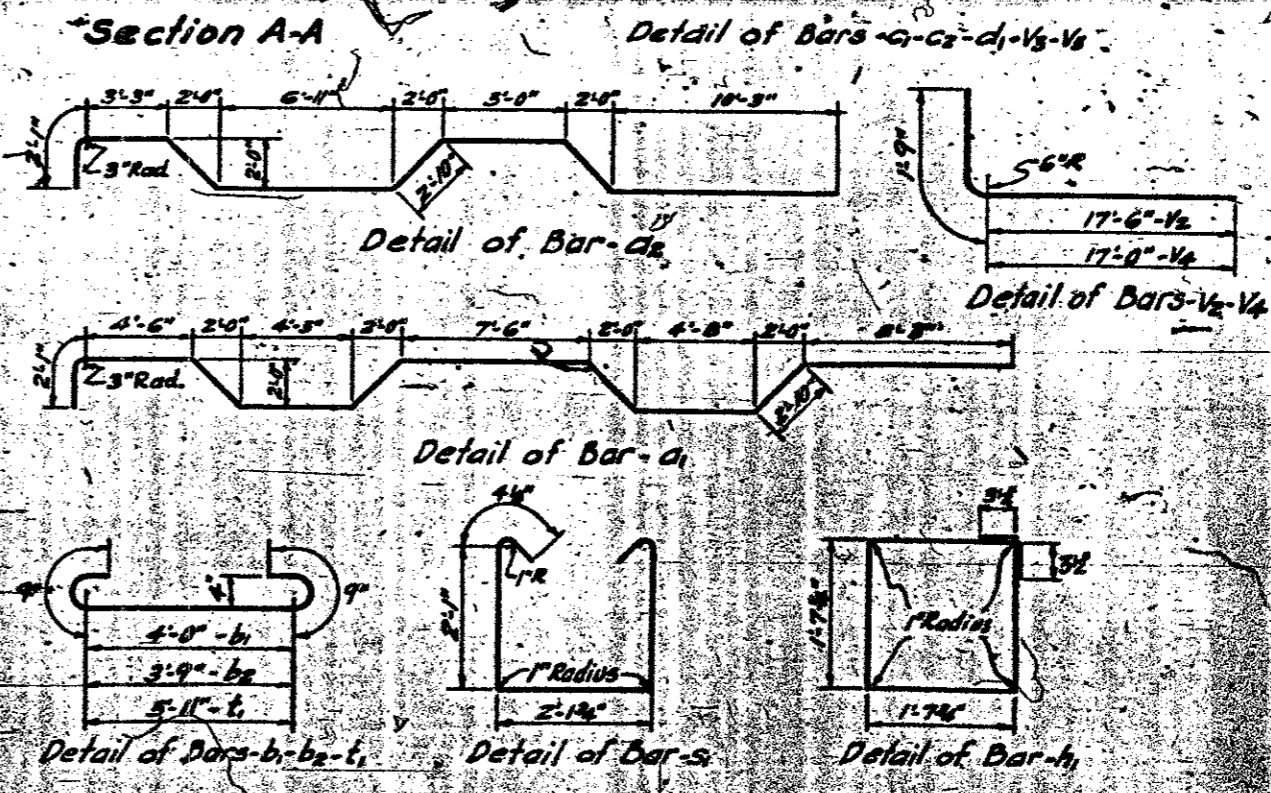
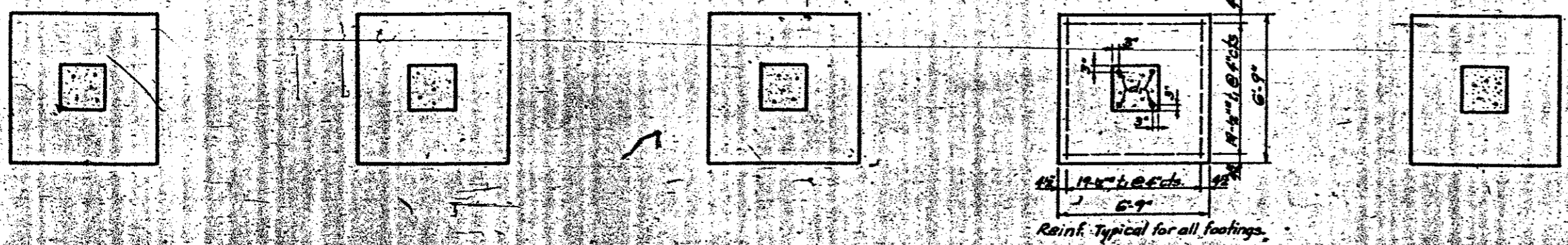
Bill of Material Interior Bent No.1				Bill of Material Interior Bent No.2					
Bar No	Size	Length	Weight	Bar No	Size	Length	Weight		
C_1	4	1 st	42-9"	581	C_1	4	1 st	42-9"	581
C_2	4	1 st	36-0"	490	C_2	4	1 st	36-0"	490
C_3	4	1 st	32-6"	691	C_3	4	1 st	32-6"	691
C_4	2	1 st	27-6"	187	C_4	2	1 st	27-6"	187
C_5	2	1 st	42-3"	287	C_5	2	1 st	42-3"	287
b_1	48	1/2"	5-6"	224	b_1	48	1/2"	5-6"	224
b_2	24	1/2"	5-3"	107	b_2	24	1/2"	5-3"	107
C_1	8	1 st	31-6"	673	C_1	8	1 st	31-6"	673
C_2	8	1 st	38-6"	822	C_2	8	1 st	38-6"	822
d_1	20	1 st	6-9"	459	d_1	20	1 st	6-9"	459
h	130	1/4"	7-2"	156	h	130	1/4"	7-2"	156
S_1	28	1/2"	7-8"	167	S_1	28	1/2"	7-8"	167
l_1	190	1/2"	7-5"	1198	l_1	190	1/2"	7-5"	1198
V_1	20	1 st	14-3"	969	V_1	20	1 st	14-3"	969
V_2	4	1 st	19-3"	262	V_2	4	1 st	19-3"	262
V_3	16	1 st	19-0"	1034	V_3	16	1 st	19-0"	1006

Reinforcing Steel Lbs. 8307 Reinforcing Steel Lbs. 8272
 Class "A" Concrete Cu. Yds. 61.0 Class "A" Concrete Cu. Yds. 60.6
 Additional Quantities For Pile Proposition
 Class "A" Concrete Cu. Yds. 4.2 Class "A" Concrete Cu. Yds. 4.2
 10"-42" Steel "H" Piles No. 25 10"-42" Steel "H" Piles No. 25

Note: Footings are figured for a soil pressure of 3 tons per sq. foot. If in the opinion of the Engineer the material encountered is not adequate for this load the Bridge Engineer shall be advised immediately.

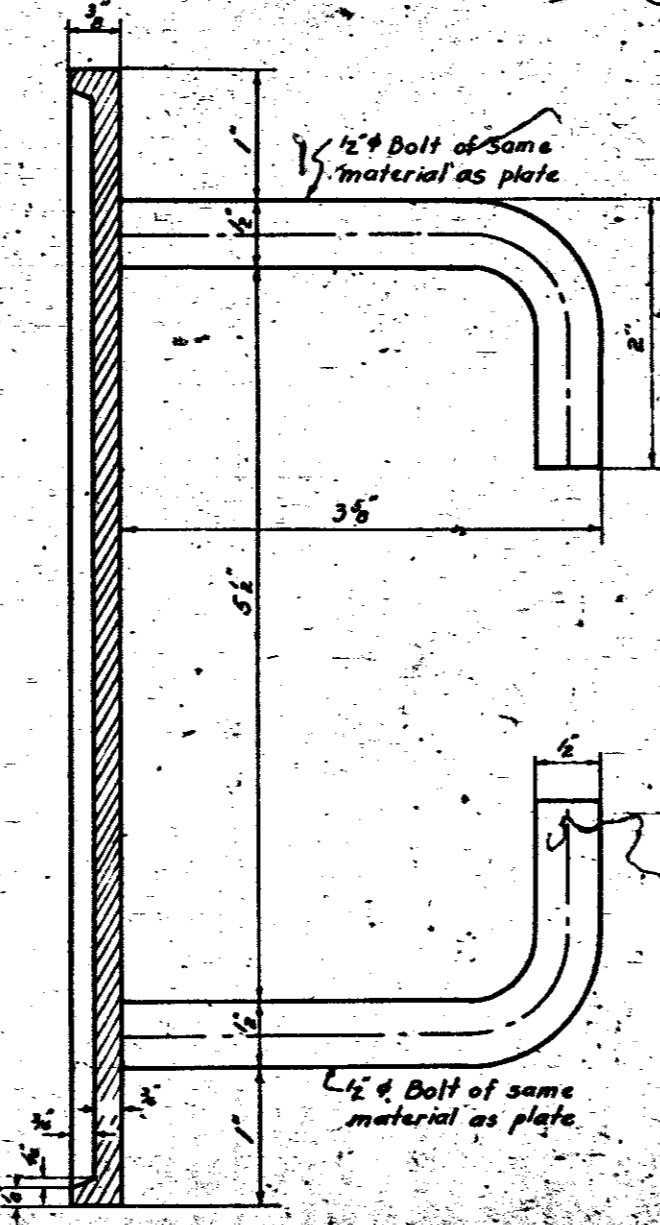
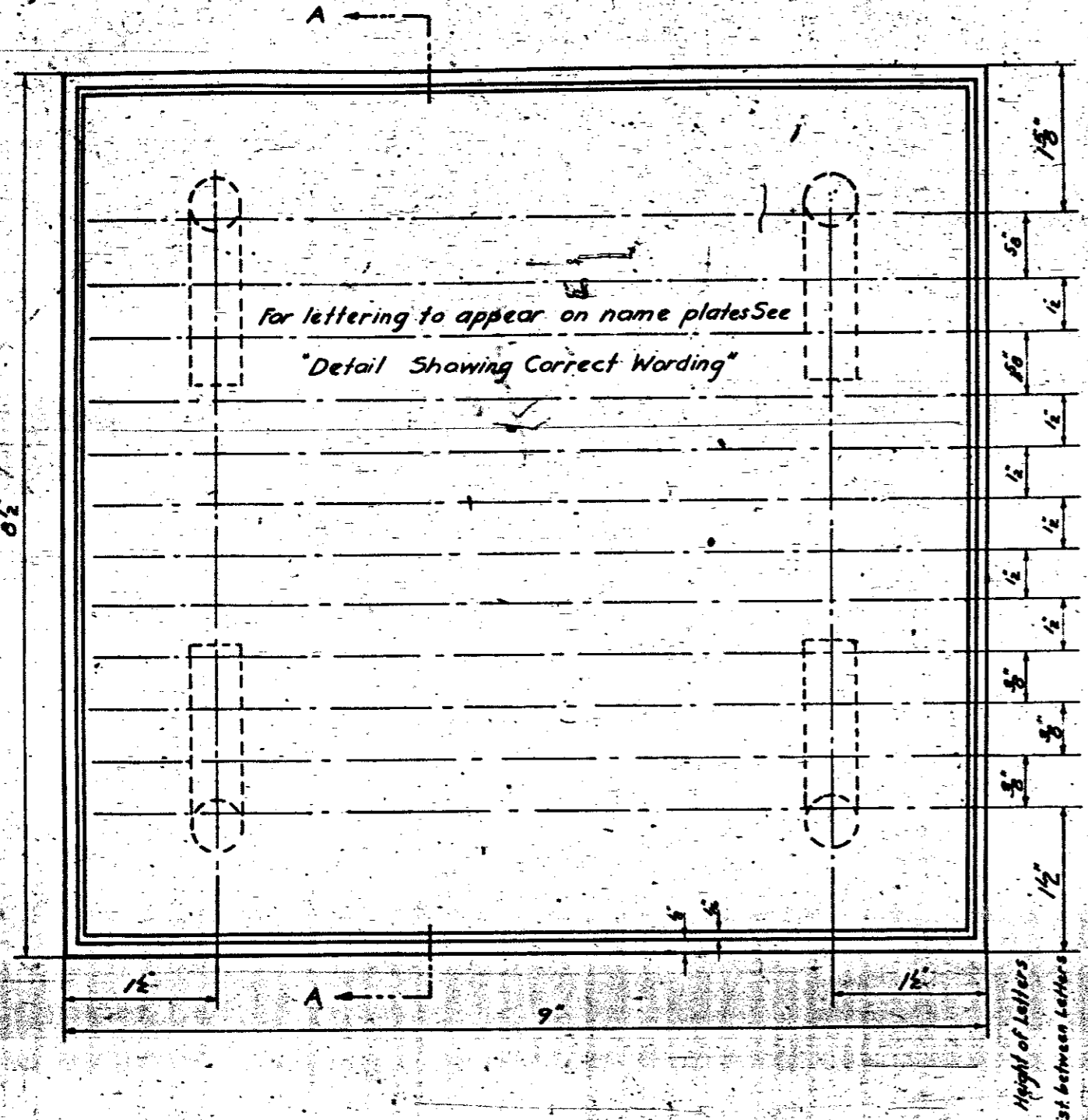
Note: For "Design Data" and "General Note" see General Drawing.

PROJECT NO. 6355
 GASTON COUNTY
 Station 260+274

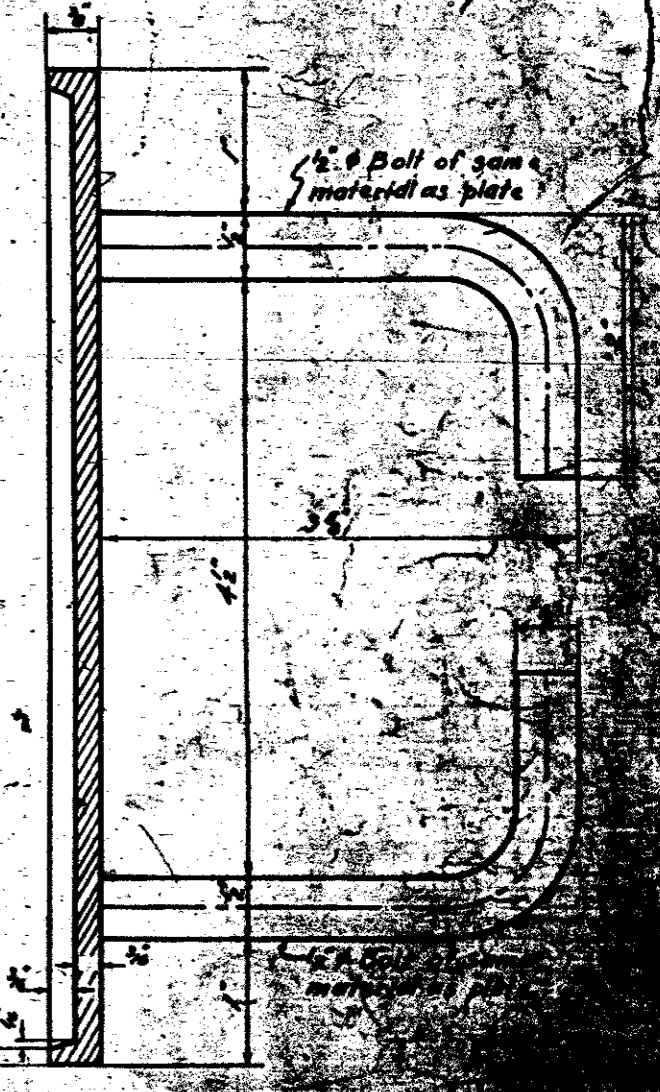
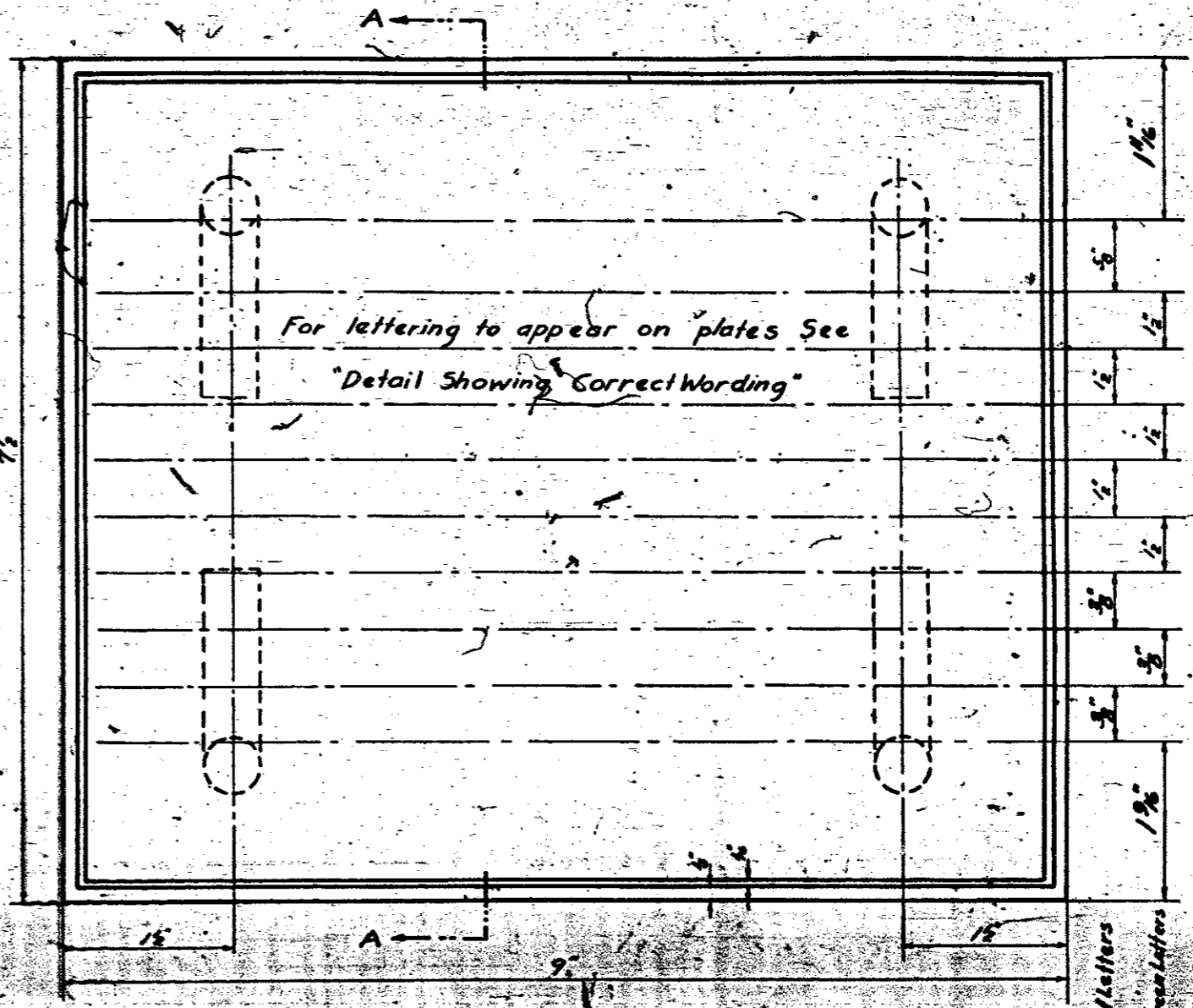


STATE OF NORTH CAROLINA
 STATE HIGHWAY AND PUBLIC WORKS COMMISSION
 DETAILS OF INTERIOR BENTS No. 1 and No. 2 FOR LOWELL OVERHEAD SOUTHERN RAILWAY MAY 1939

SPECIAL
 DESIGNED BY: [Signature] DATE: May 1939
 DRAWN BY: [Signature] DATE: May 1939
 CHECKED BY: [Signature] DATE: May 1939



SECTION A-A



SECTION A-A

THIS DETAIL TO BE USED WHEN TWO LINES ARE REQUIRED FOR NAME OF BRIDGE

THIS DETAIL TO BE USED WHEN ONE LINE IS REQUIRED FOR NAME OF BRIDGE

LOWELL OVERHEAD BRIDGE
 GASTON COUNTY
 STATE PROJECT 6355
 BUILT WITH FEDERAL AID
 1939

DETAIL SHOWING CORRECT WORDING

GENERAL NOTE:

Two name plates are required for each bridge. One is to appear on each right hand and left approaching the bridge. The plates are to be made of Grade C Phosphor Bronze See Specifications. The border and all lettering are to be raised 3/16" above the face of the plate. The top surface of the raised border and lettering shall be smooth. Lettering may be square cut or tapered. The height of the letters shall be 5/16". The wording shall be as shown in the Detail Showing Correct Wording. Lettering shall be vertical.

Name plate to be placed on end of end post See Gen Plan

PROJECT NO. 6355
 GASTON COUNTY

STATION 260+27

STATE OF NORTH CAROLINA
 STATE HIGHWAY AND
 PUBLIC WORKS COMMISSION
 STANDARD
 NAME PLATE
 FOR
 CONCRETE BRIDGES
 MARCH 1938

SPECIAL	DESIGNED BY C. J. YARBROOK	DATE APRIL 1938
	CHECKED BY W. S. WICKER	DATE MAY 1938
STANDARD	DESIGNED BY G. S. WICKER	DATE APRIL 1938
	CHECKED BY C. J. YARBROOK	DATE MAY 1938

Revised for height of letters in last two lines 11/15/39 G.S.W.