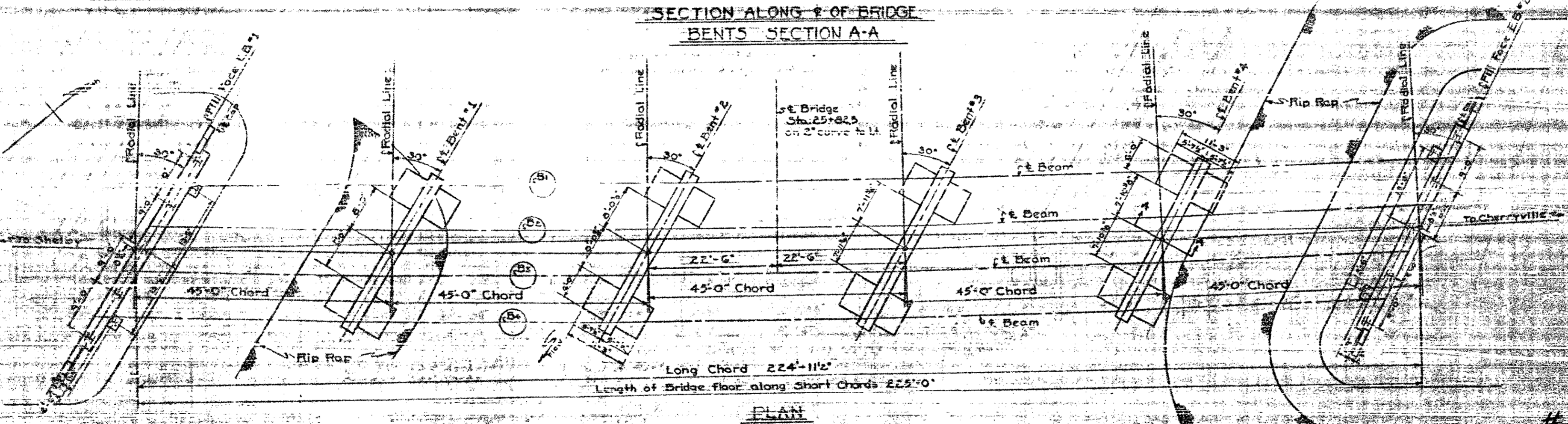


Reel # 799
Pos # 20



NOTES

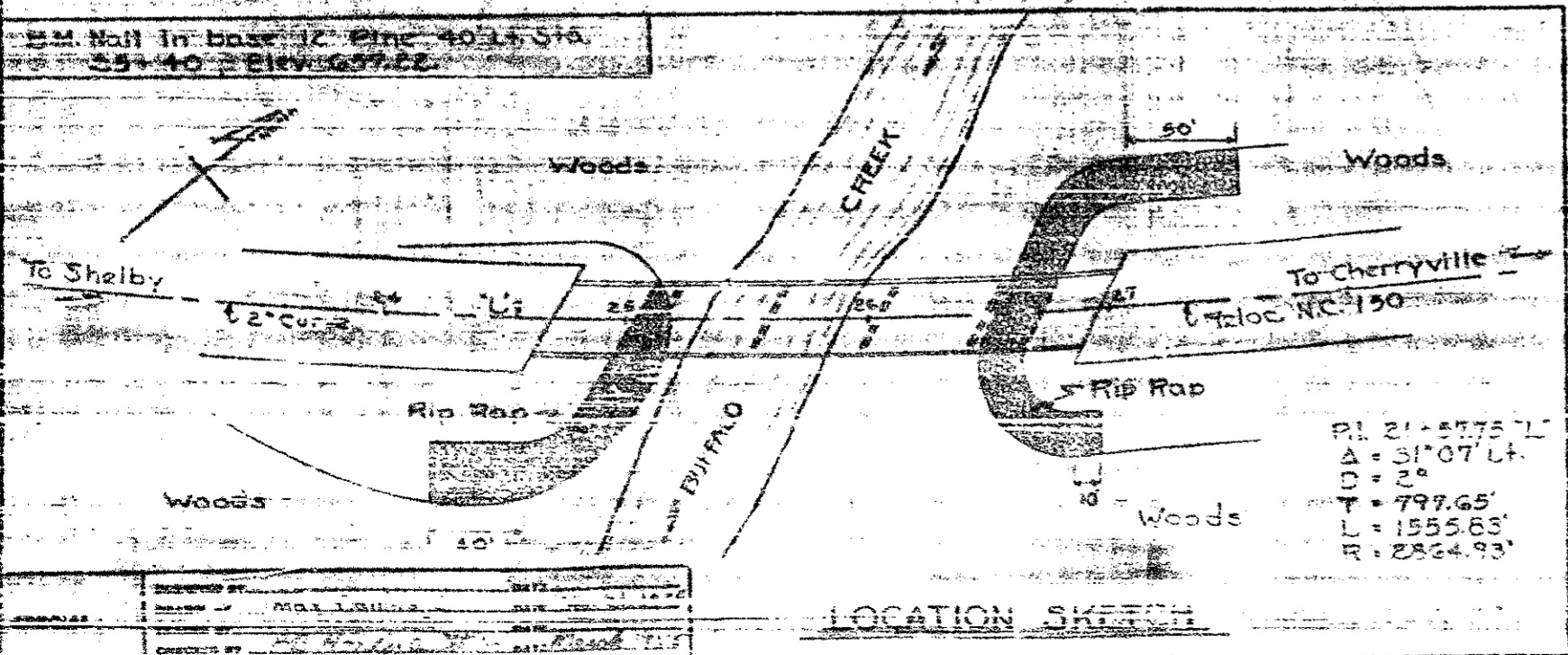
Assumed Live Load 1120 S16
For other design data and general notes see Sheet S.H.

Bent piles are to be driven thru the roadway fill. Piles to be driven to a minimum bearing capacity of 29 tons each. Test piles will not be required. Order list to be based on Elev. 4.5' long for bent #1 and 32' long for bent #2.

Computed Foundation Loads for Bent #1 are as follows: Bent No. 1, 17 tons per ft. Bent No. 2, 2.4 tons per ft. Bent No. 3, 2.4 tons per ft. Bent No. 4, 2.4 tons per ft. Footings are to be carried at least with the minimum thickness shown.

For other design data and general notes see Sheet S.H.

Special Provisions: Mill and Chop inspection of Structural Steel is required. Care shall be taken to protect bent #1 when placing Rip Rap for End Bent #1.



TOTAL BILL OF MATERIAL

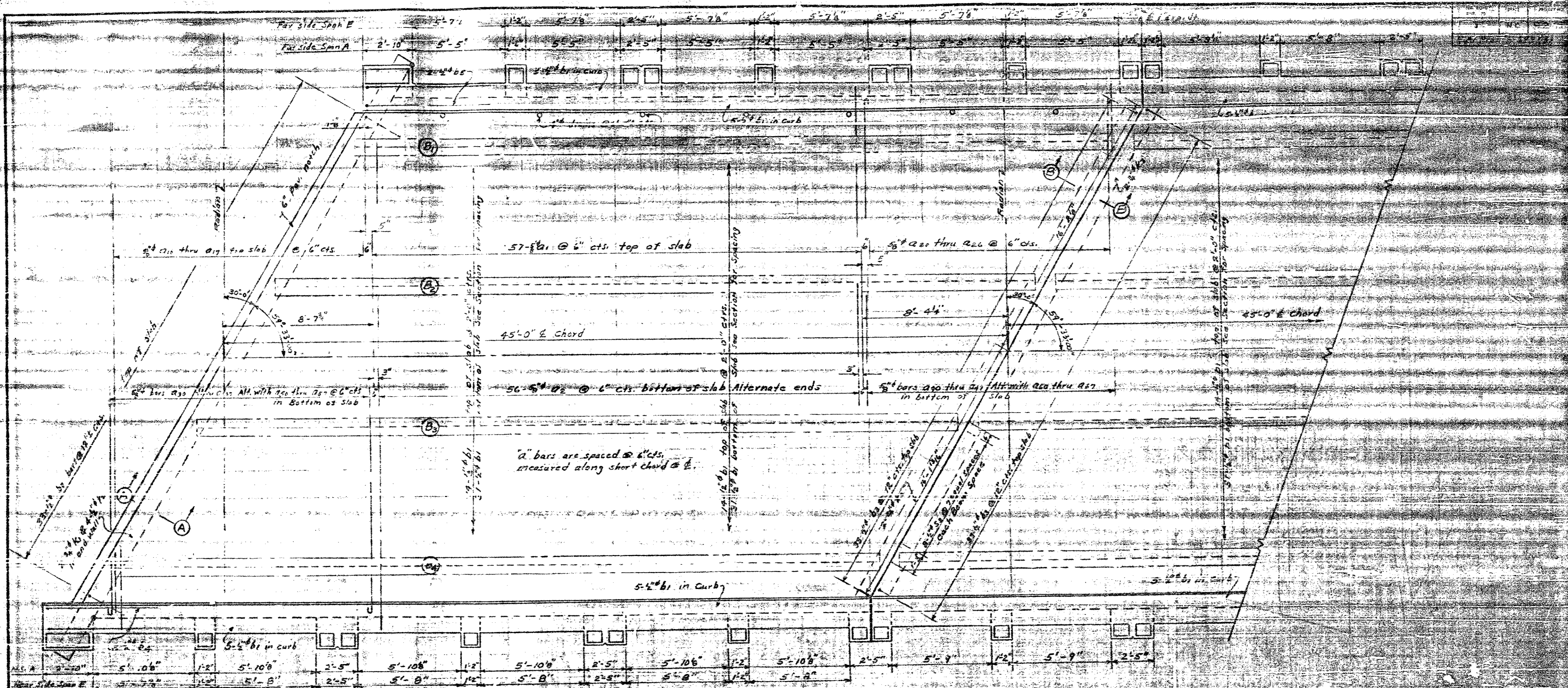
	Class A Concrete	Reinforcing Steel	Excavation Wet Dry	Rip Rap Plain Class 2	Rip Rap Concrete	Method of Water proofing	Structural Steel Approx. Lbs.	IP & S16 Steel # Piles No/Lin Ft.
	Cu. Yds.	Lbs.	C.Y. C.Y.	Sq. Yds.	Sq. Yds.	Sq. Yds.	Lbs.	No/Lin Ft.
Superstructure	212.5	42825		420	465	22	149,400	7,315
End Bent #1	13.6	2370						
Bent #1	48.3	7566	72	55				
Bent #2	50.3	7708	100					
Bent #3	22.6	4775	85	94				
Bent #4	40.2	6301	30	35				
End Bent #2	13.9	2372		500	560			7,235
Approach Curbs	2.2	76						
TOTAL	429.4	77145	250215	120	1035	22	149,400	14,550

#76

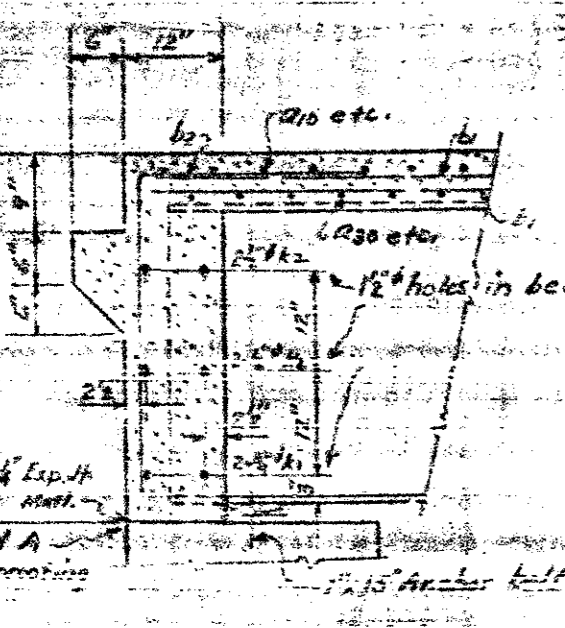
PROJECT NO. B-16
CLEVELAND COUNTY
STATION: 25+82.5

STATE OF NORTH CAROLINA
STATE HIGHWAY AND
PUBLIC WORKS COMMISSION

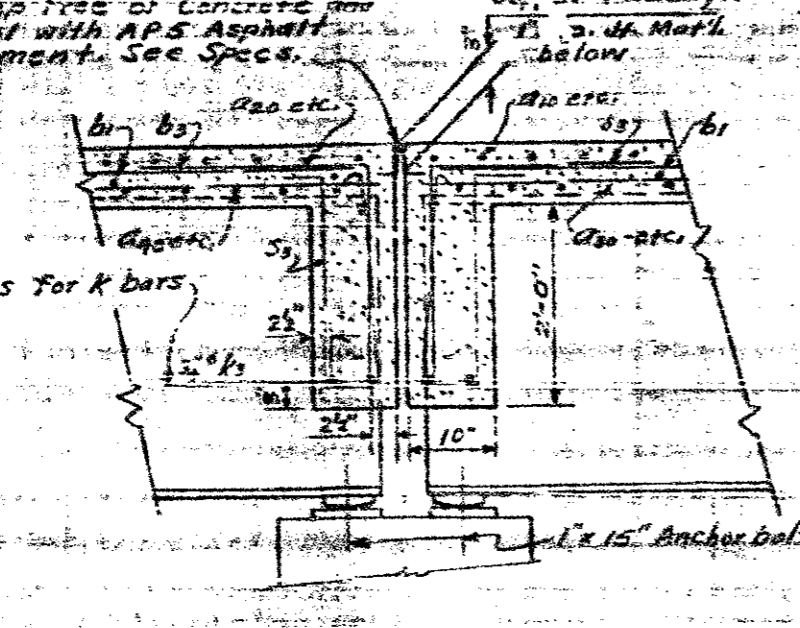
GENERAL DRAWING FOR
BRIDGE OVER CREEK
OR RELOC. ROAD DESIGN
SHELBY AND CHERYVILLE



PART PLAN



SECTION A-A



SECTION B-B

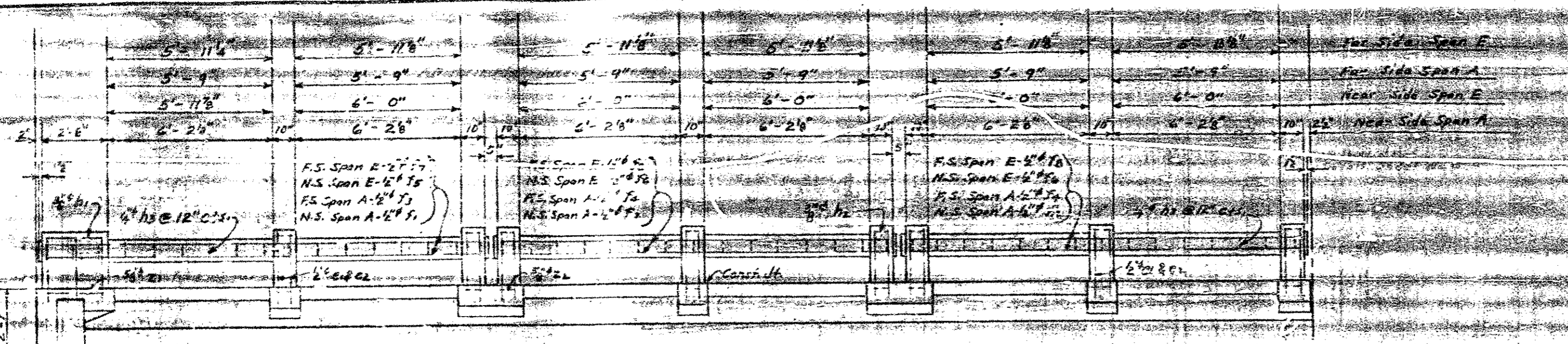
Max. D.L. Deflection
 Interior Beams 7/16"
 Exterior Beams 5/16"

PROJECT NO. 2510
 CLEVELAND COUNTY
 STATION 25+82.0

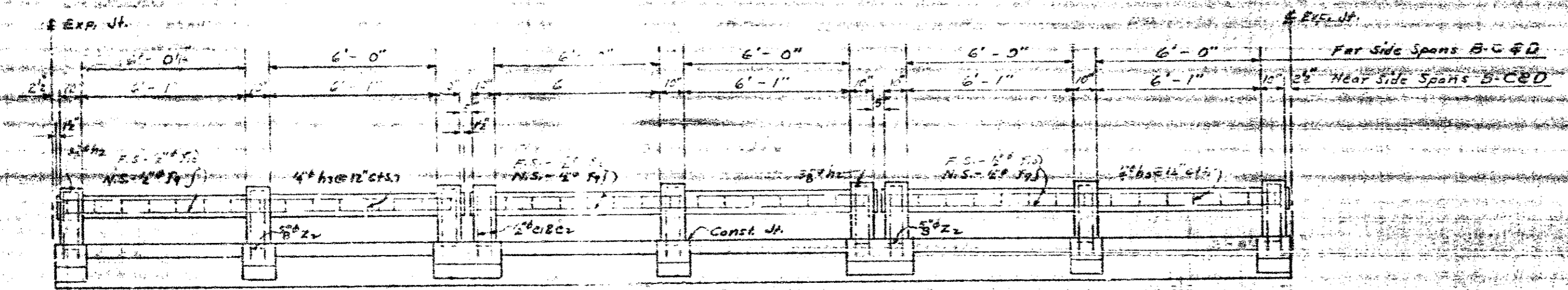
STATE OF NORTH CAROLINA	
STATE HIGHWAY AND PUBLIC WORKS COMMISSION	
SUPERSTRUCTURE DETAILS	
FEBRUARY 1955	
DESIGNED BY	DATE
DRAWN BY	DATE
CHECKED BY	DATE
APPROVED BY	DATE

SPECIAL
 DESIGNED BY: [Signature]
 DATE: Feb. 1955
 DRAWN BY: [Signature]
 DATE: [Blank]
 CHECKED BY: [Signature]
 DATE: [Blank]
 APPROVED BY: [Signature]
 DATE: [Blank]

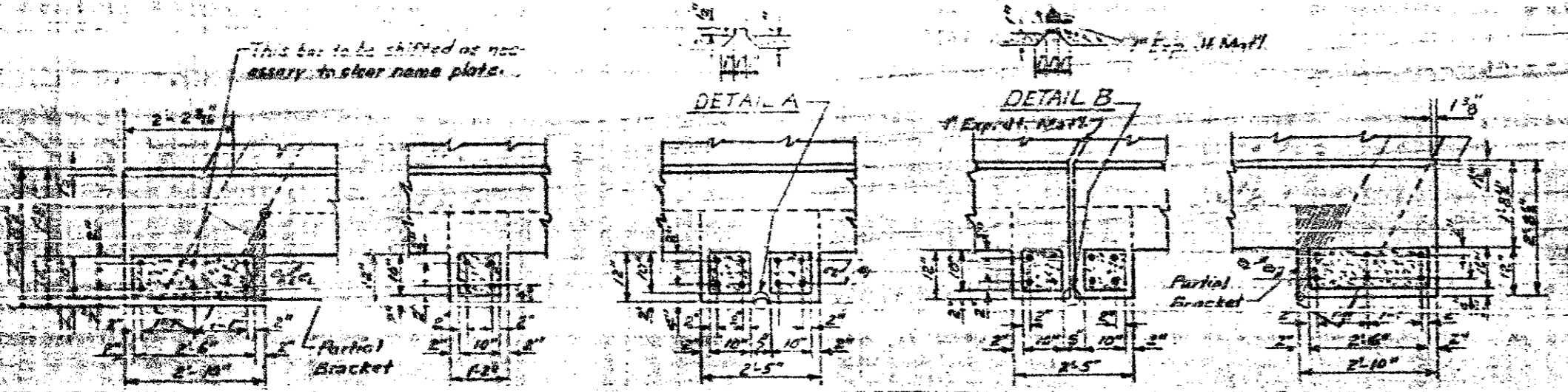
NO. 1	NO. 2	NO. 3
-------	-------	-------



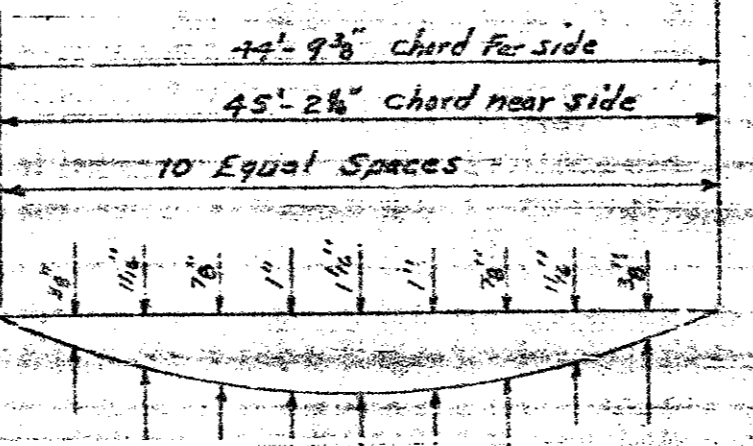
RAIL ELEVATION SPAN A OR C



RAIL ELEVATION SPANS B-C OR D



POST DETAILS



OFFSETS TO CURVE NEAR OR FAR SIDE
ALL SPANS



RAIL SECTION

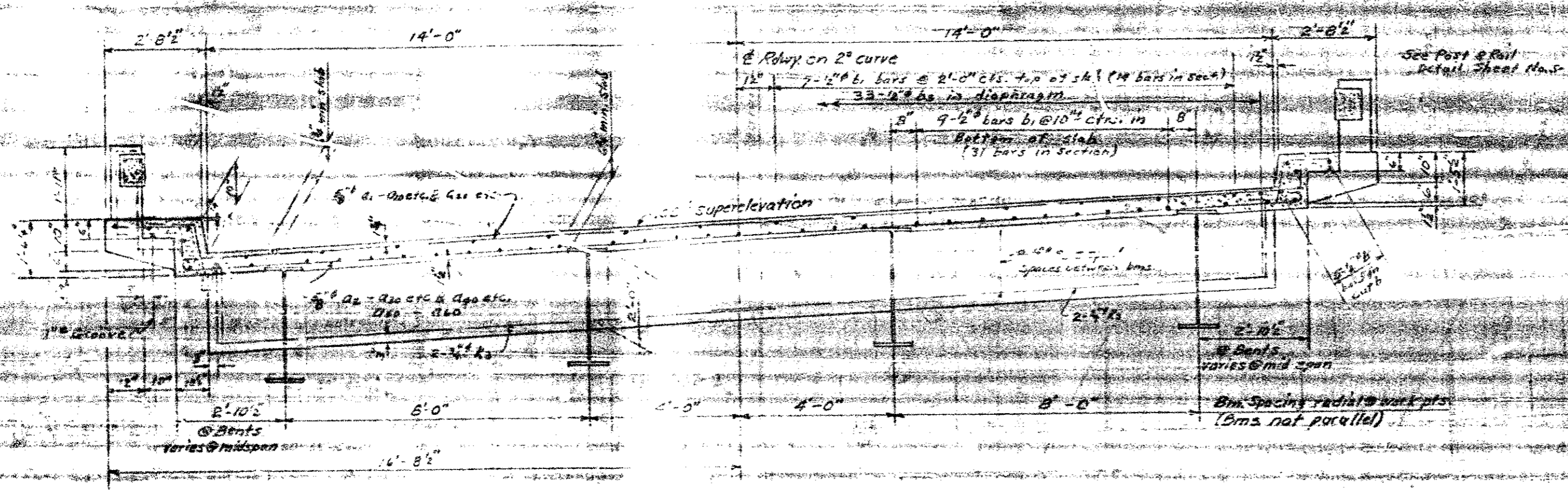
PROJECT NO. 1015
CLEVELAND COUNTY
STATION 25 + 32.5

STATE OF NORTH CAROLINA
STATE HIGHWAY
PUBLIC WORKS COMMISSION
SUPERSTRUCTURE
DETAILS

DATE: 11/11/53
DRAWN BY: [Signature]

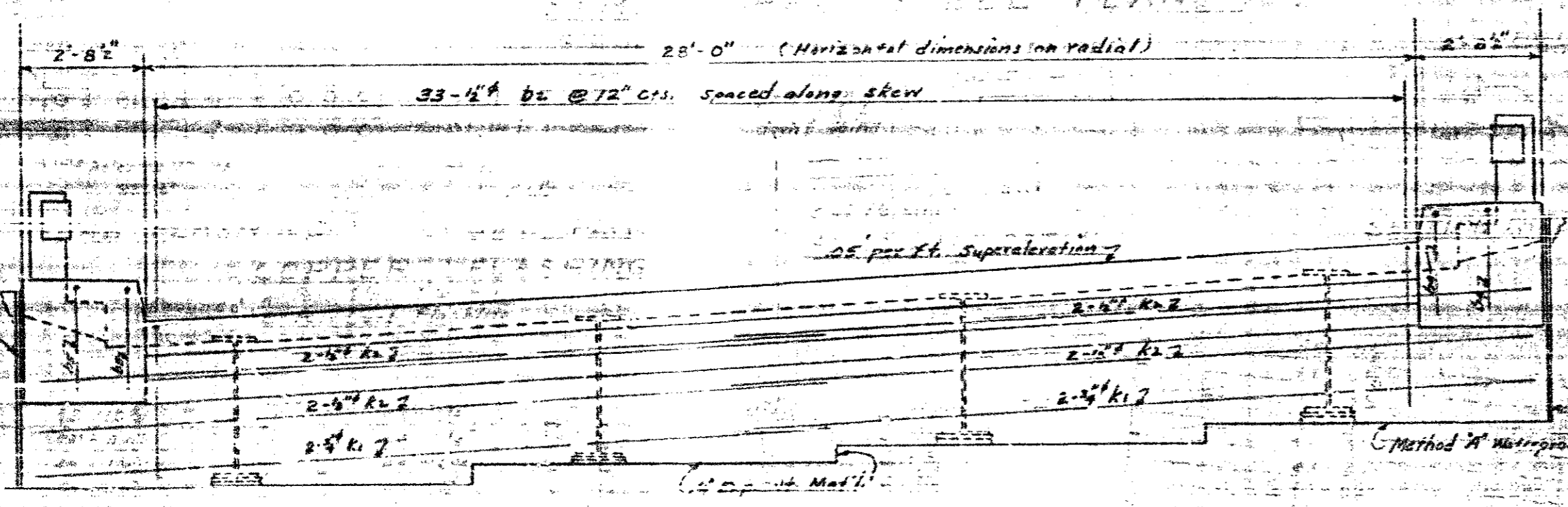
DESIGNED BY	DATE
D. J. [Signature]	11/11/53
CHECKED BY	DATE
[Signature]	11/11/53

All horizontal dimensions on radial



TYPICAL SECTION

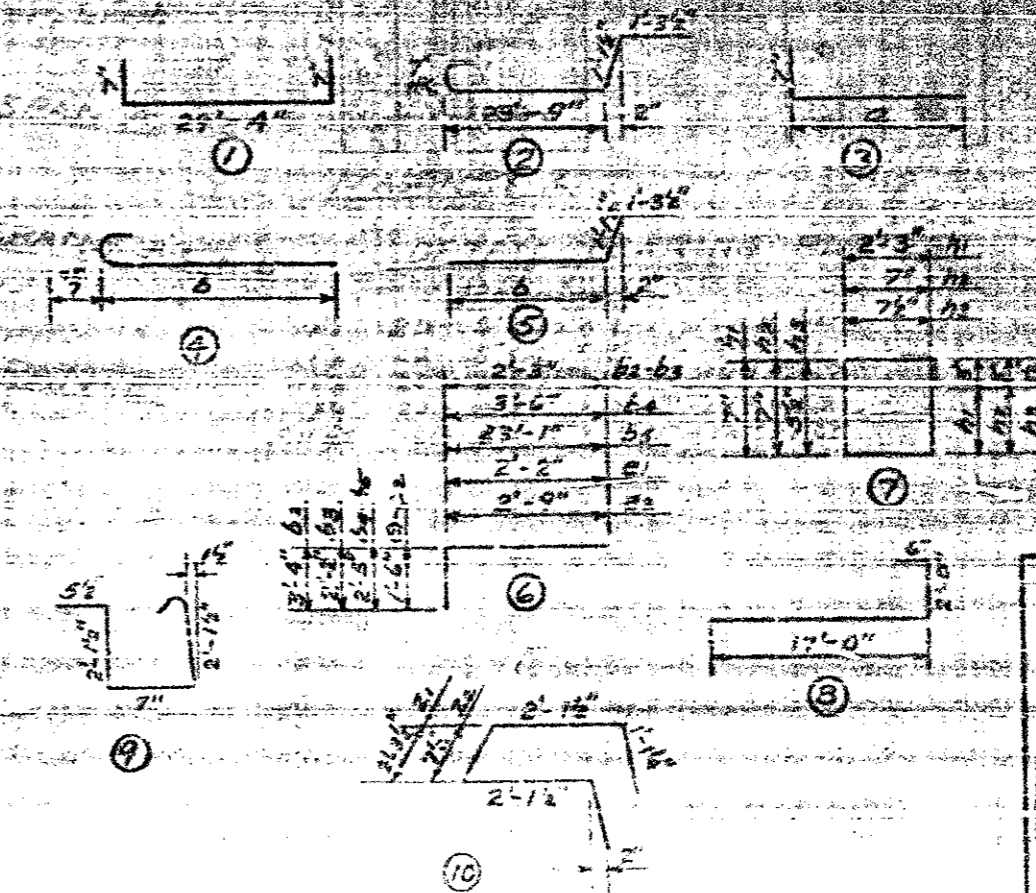
Concrete diaphragm @ bents shown



END ELEVATION

BILL OF MATERIAL FOR 5 SPANS

Bar No.	Size	Type	Dimension	Length	No. of	Weight
01	205	1	14'-0"	14'-0"	1	14'-0"
02	205	2	14'-0"	14'-0"	1	14'-0"
03	20	3	14'-0"	14'-0"	1	14'-0"
04	20	3	14'-0"	14'-0"	1	14'-0"
05	20	3	14'-0"	14'-0"	1	14'-0"
06	20	3	14'-0"	14'-0"	1	14'-0"
07	20	3	14'-0"	14'-0"	1	14'-0"
08	20	3	14'-0"	14'-0"	1	14'-0"
09	20	3	14'-0"	14'-0"	1	14'-0"
10	20	3	14'-0"	14'-0"	1	14'-0"
11	20	3	14'-0"	14'-0"	1	14'-0"
12	20	3	14'-0"	14'-0"	1	14'-0"
13	20	3	14'-0"	14'-0"	1	14'-0"
14	20	3	14'-0"	14'-0"	1	14'-0"
15	20	3	14'-0"	14'-0"	1	14'-0"
16	20	3	14'-0"	14'-0"	1	14'-0"
17	20	3	14'-0"	14'-0"	1	14'-0"
18	20	3	14'-0"	14'-0"	1	14'-0"
19	20	3	14'-0"	14'-0"	1	14'-0"
20	20	3	14'-0"	14'-0"	1	14'-0"
21	20	3	14'-0"	14'-0"	1	14'-0"
22	20	3	14'-0"	14'-0"	1	14'-0"
23	20	3	14'-0"	14'-0"	1	14'-0"
24	20	3	14'-0"	14'-0"	1	14'-0"
25	20	3	14'-0"	14'-0"	1	14'-0"
26	20	3	14'-0"	14'-0"	1	14'-0"
27	20	3	14'-0"	14'-0"	1	14'-0"
28	20	3	14'-0"	14'-0"	1	14'-0"
29	20	3	14'-0"	14'-0"	1	14'-0"
30	20	3	14'-0"	14'-0"	1	14'-0"
31	20	3	14'-0"	14'-0"	1	14'-0"
32	20	3	14'-0"	14'-0"	1	14'-0"
33	20	3	14'-0"	14'-0"	1	14'-0"
34	20	3	14'-0"	14'-0"	1	14'-0"
35	20	3	14'-0"	14'-0"	1	14'-0"
36	20	3	14'-0"	14'-0"	1	14'-0"
37	20	3	14'-0"	14'-0"	1	14'-0"
38	20	3	14'-0"	14'-0"	1	14'-0"
39	20	3	14'-0"	14'-0"	1	14'-0"
40	20	3	14'-0"	14'-0"	1	14'-0"
41	20	3	14'-0"	14'-0"	1	14'-0"
42	20	3	14'-0"	14'-0"	1	14'-0"
43	20	3	14'-0"	14'-0"	1	14'-0"
44	20	3	14'-0"	14'-0"	1	14'-0"
45	20	3	14'-0"	14'-0"	1	14'-0"
46	20	3	14'-0"	14'-0"	1	14'-0"
47	20	3	14'-0"	14'-0"	1	14'-0"
48	20	3	14'-0"	14'-0"	1	14'-0"
49	20	3	14'-0"	14'-0"	1	14'-0"
50	20	3	14'-0"	14'-0"	1	14'-0"
51	20	3	14'-0"	14'-0"	1	14'-0"
52	20	3	14'-0"	14'-0"	1	14'-0"
53	20	3	14'-0"	14'-0"	1	14'-0"
54	20	3	14'-0"	14'-0"	1	14'-0"
55	20	3	14'-0"	14'-0"	1	14'-0"
56	20	3	14'-0"	14'-0"	1	14'-0"
57	20	3	14'-0"	14'-0"	1	14'-0"
58	20	3	14'-0"	14'-0"	1	14'-0"
59	20	3	14'-0"	14'-0"	1	14'-0"
60	20	3	14'-0"	14'-0"	1	14'-0"
61	20	3	14'-0"	14'-0"	1	14'-0"
62	20	3	14'-0"	14'-0"	1	14'-0"
63	20	3	14'-0"	14'-0"	1	14'-0"
64	20	3	14'-0"	14'-0"	1	14'-0"
65	20	3	14'-0"	14'-0"	1	14'-0"
66	20	3	14'-0"	14'-0"	1	14'-0"
67	20	3	14'-0"	14'-0"	1	14'-0"
68	20	3	14'-0"	14'-0"	1	14'-0"
69	20	3	14'-0"	14'-0"	1	14'-0"
70	20	3	14'-0"	14'-0"	1	14'-0"
71	20	3	14'-0"	14'-0"	1	14'-0"
72	20	3	14'-0"	14'-0"	1	14'-0"
73	20	3	14'-0"	14'-0"	1	14'-0"
74	20	3	14'-0"	14'-0"	1	14'-0"
75	20	3	14'-0"	14'-0"	1	14'-0"
76	20	3	14'-0"	14'-0"	1	14'-0"
77	20	3	14'-0"	14'-0"	1	14'-0"
78	20	3	14'-0"	14'-0"	1	14'-0"
79	20	3	14'-0"	14'-0"	1	14'-0"
80	20	3	14'-0"	14'-0"	1	14'-0"
81	20	3	14'-0"	14'-0"	1	14'-0"
82	20	3	14'-0"	14'-0"	1	14'-0"
83	20	3	14'-0"	14'-0"	1	14'-0"
84	20	3	14'-0"	14'-0"	1	14'-0"
85	20	3	14'-0"	14'-0"	1	14'-0"
86	20	3	14'-0"	14'-0"	1	14'-0"
87	20	3	14'-0"	14'-0"	1	14'-0"
88	20	3	14'-0"	14'-0"	1	14'-0"
89	20	3	14'-0"	14'-0"	1	14'-0"
90	20	3	14'-0"	14'-0"	1	14'-0"
91	20	3	14'-0"	14'-0"	1	14'-0"
92	20	3	14'-0"	14'-0"	1	14'-0"
93	20	3	14'-0"	14'-0"	1	14'-0"
94	20	3	14'-0"	14'-0"	1	14'-0"
95	20	3	14'-0"	14'-0"	1	14'-0"
96	20	3	14'-0"	14'-0"	1	14'-0"
97	20	3	14'-0"	14'-0"	1	14'-0"
98	20	3	14'-0"	14'-0"	1	14'-0"
99	20	3	14'-0"	14'-0"	1	14'-0"
100	20	3	14'-0"	14'-0"	1	14'-0"

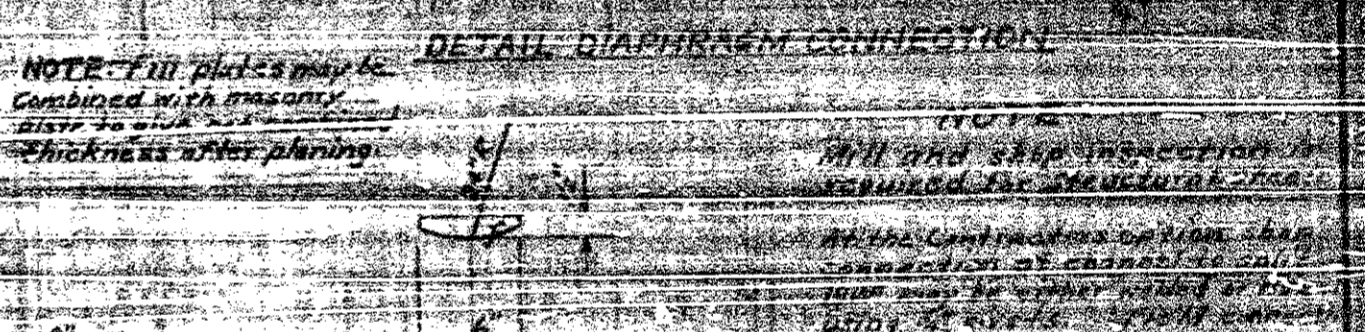
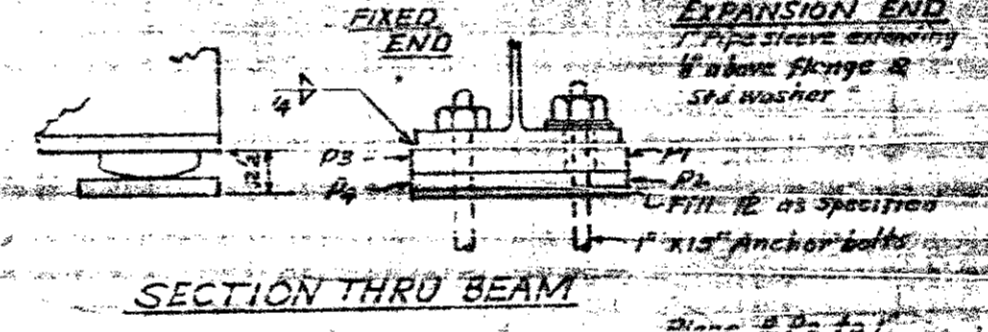
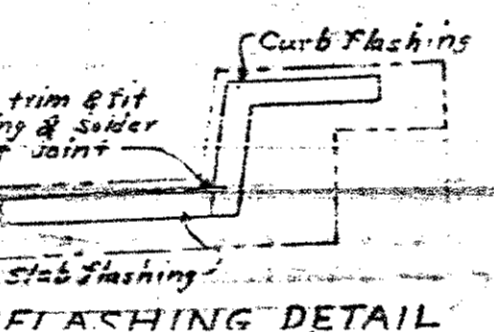
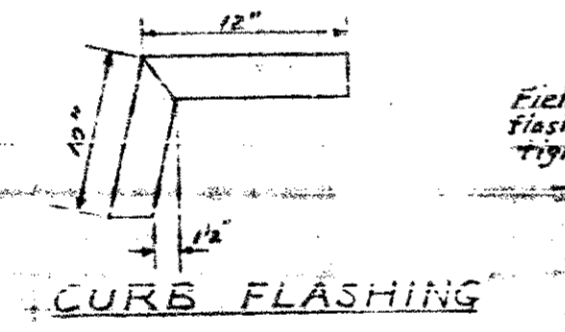
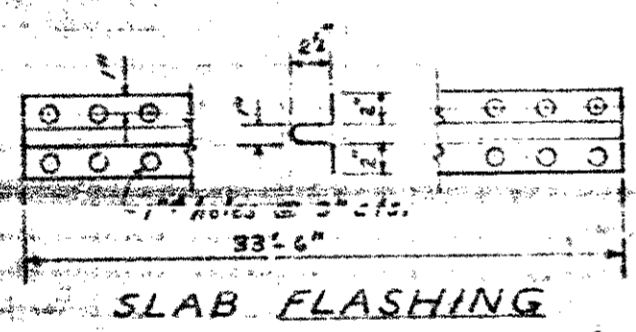
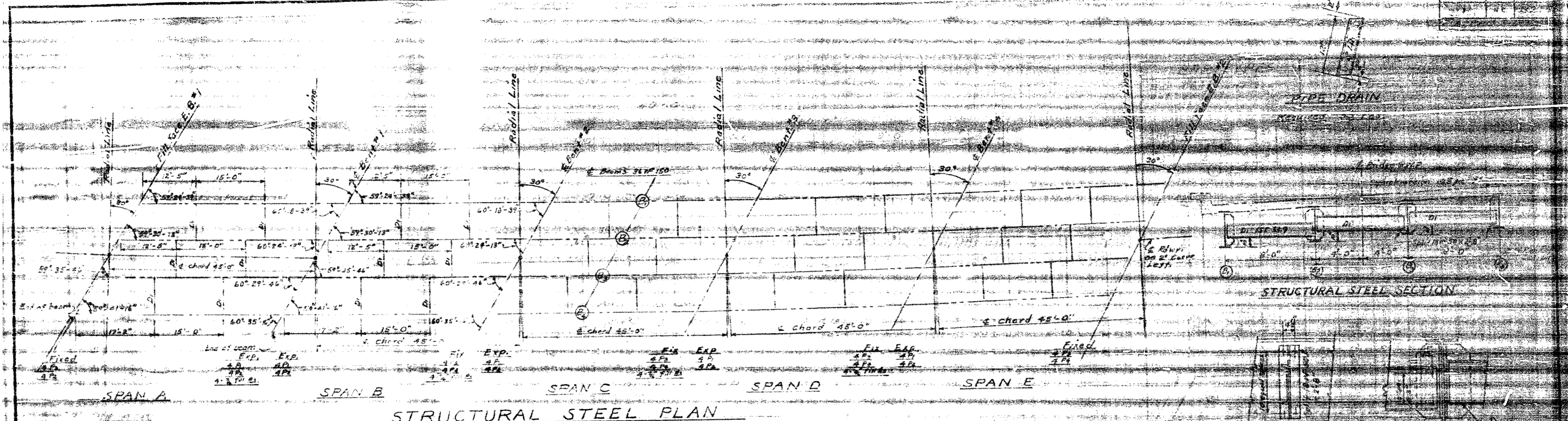


BAR TYPES
Dimensions are out to out

PROJECT NO. 6215
CLEVELAND COUNTY
STATION 25+82.5

STATE OF NORTH CAROLINA
STATE HIGHWAY AND
PUBLIC WORKS COMMISSION
SUPERSTRUCTURE
DETAILS
MARCH 1955

SPECIAL
DRAWN BY
CHECKED BY
DATE

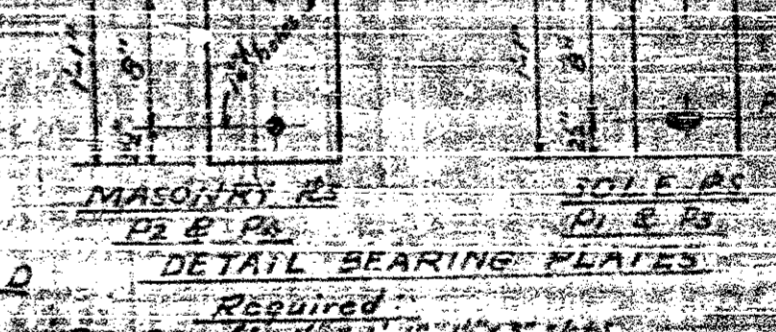
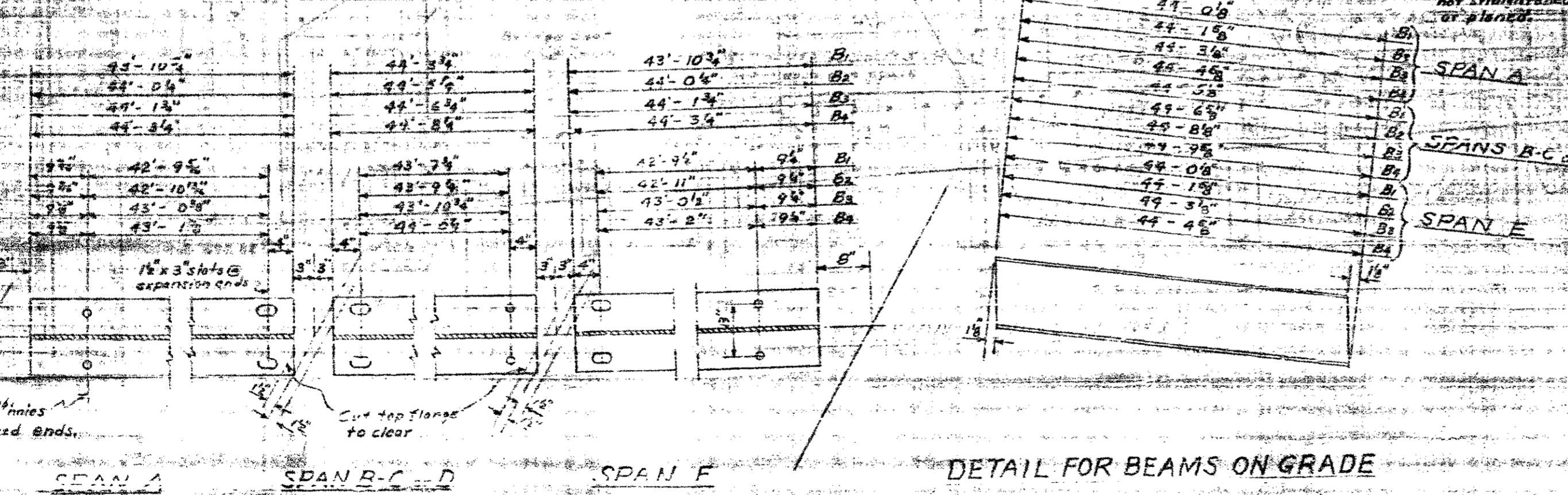


COPPER FLASHING

Required

4-Pcs. Slab Flashing

4-Pcs. Curb Flashing



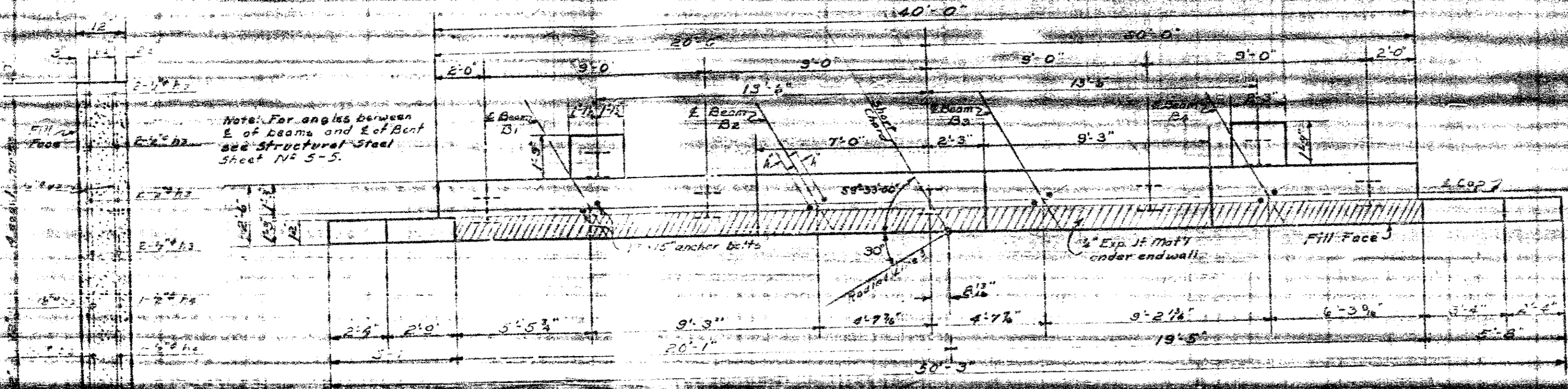
PROJECT NO. 22

CLEVELAND COUNTY

STATION 25+92.5

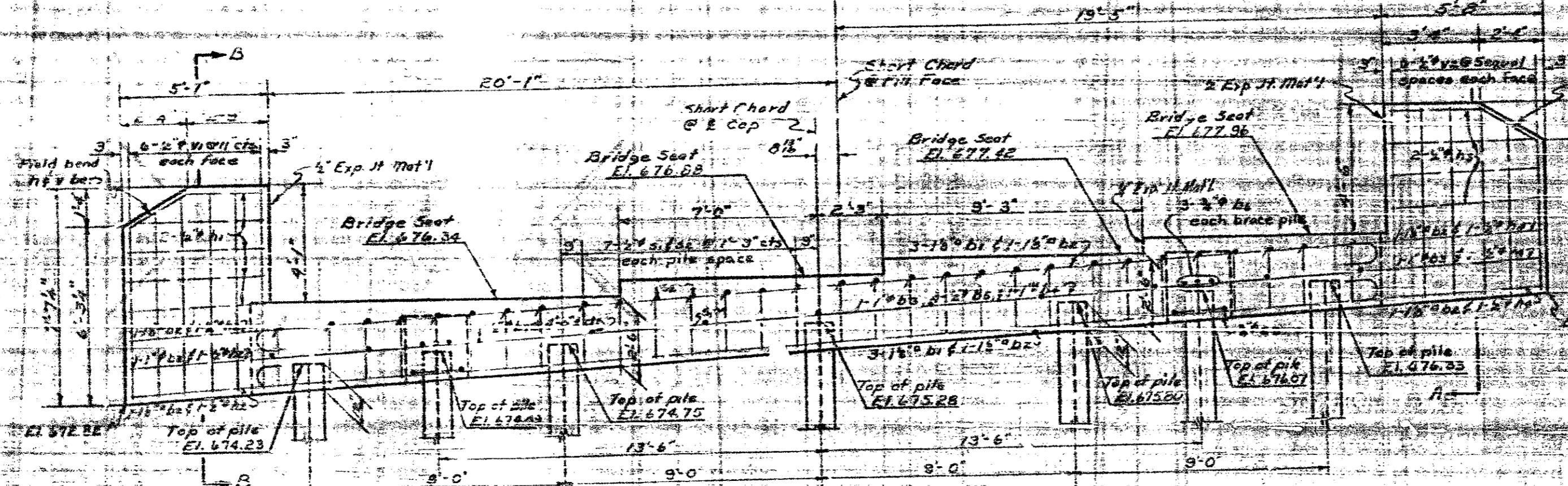
STATE OF NORTH CAROLINA
STATE HIGHWAY
PUBLIC WORKS COMMISSION
SUPERSTRUCTURE
STRUCTURAL STEEL
FEBRUARY 1955

DESIGNED BY	DATE
CHECKED BY	DATE
APPROVED BY	DATE



BAR TYPES		BILL OF MATERIAL			
Bar dimensions etc.	cut to cut	END BENT NO. 1			
NR	NR	QTY	SIZE	TYPE	LENGTH
1/2" x 6"	1/2" x 6"	1	1/2"	S1K	4'-3"
1/2" x 8"	1/2" x 8"	1	1/2"	S1K	4'-3"
1/2" x 10"	1/2" x 10"	1	1/2"	S1K	4'-3"
1/2" x 12"	1/2" x 12"	1	1/2"	S1K	4'-3"
1/2" x 14"	1/2" x 14"	1	1/2"	S1K	4'-3"
1/2" x 16"	1/2" x 16"	1	1/2"	S1K	4'-3"
1/2" x 18"	1/2" x 18"	1	1/2"	S1K	4'-3"
1/2" x 20"	1/2" x 20"	1	1/2"	S1K	4'-3"
1/2" x 22"	1/2" x 22"	1	1/2"	S1K	4'-3"
1/2" x 24"	1/2" x 24"	1	1/2"	S1K	4'-3"
1/2" x 26"	1/2" x 26"	1	1/2"	S1K	4'-3"
1/2" x 28"	1/2" x 28"	1	1/2"	S1K	4'-3"
1/2" x 30"	1/2" x 30"	1	1/2"	S1K	4'-3"
1/2" x 32"	1/2" x 32"	1	1/2"	S1K	4'-3"
1/2" x 34"	1/2" x 34"	1	1/2"	S1K	4'-3"
1/2" x 36"	1/2" x 36"	1	1/2"	S1K	4'-3"
1/2" x 38"	1/2" x 38"	1	1/2"	S1K	4'-3"
1/2" x 40"	1/2" x 40"	1	1/2"	S1K	4'-3"
1/2" x 42"	1/2" x 42"	1	1/2"	S1K	4'-3"
1/2" x 44"	1/2" x 44"	1	1/2"	S1K	4'-3"
1/2" x 46"	1/2" x 46"	1	1/2"	S1K	4'-3"
1/2" x 48"	1/2" x 48"	1	1/2"	S1K	4'-3"
1/2" x 50"	1/2" x 50"	1	1/2"	S1K	4'-3"
1/2" x 52"	1/2" x 52"	1	1/2"	S1K	4'-3"
1/2" x 54"	1/2" x 54"	1	1/2"	S1K	4'-3"
1/2" x 56"	1/2" x 56"	1	1/2"	S1K	4'-3"
1/2" x 58"	1/2" x 58"	1	1/2"	S1K	4'-3"
1/2" x 60"	1/2" x 60"	1	1/2"	S1K	4'-3"
1/2" x 62"	1/2" x 62"	1	1/2"	S1K	4'-3"
1/2" x 64"	1/2" x 64"	1	1/2"	S1K	4'-3"
1/2" x 66"	1/2" x 66"	1	1/2"	S1K	4'-3"
1/2" x 68"	1/2" x 68"	1	1/2"	S1K	4'-3"
1/2" x 70"	1/2" x 70"	1	1/2"	S1K	4'-3"
1/2" x 72"	1/2" x 72"	1	1/2"	S1K	4'-3"
1/2" x 74"	1/2" x 74"	1	1/2"	S1K	4'-3"
1/2" x 76"	1/2" x 76"	1	1/2"	S1K	4'-3"
1/2" x 78"	1/2" x 78"	1	1/2"	S1K	4'-3"
1/2" x 80"	1/2" x 80"	1	1/2"	S1K	4'-3"
1/2" x 82"	1/2" x 82"	1	1/2"	S1K	4'-3"
1/2" x 84"	1/2" x 84"	1	1/2"	S1K	4'-3"
1/2" x 86"	1/2" x 86"	1	1/2"	S1K	4'-3"
1/2" x 88"	1/2" x 88"	1	1/2"	S1K	4'-3"
1/2" x 90"	1/2" x 90"	1	1/2"	S1K	4'-3"
1/2" x 92"	1/2" x 92"	1	1/2"	S1K	4'-3"
1/2" x 94"	1/2" x 94"	1	1/2"	S1K	4'-3"
1/2" x 96"	1/2" x 96"	1	1/2"	S1K	4'-3"
1/2" x 98"	1/2" x 98"	1	1/2"	S1K	4'-3"
1/2" x 100"	1/2" x 100"	1	1/2"	S1K	4'-3"

SECTION A-B



SECTION THRU CRP

PROJECT NO. 2215
 CLEVELAND COUNTY
 STATION 25+00

STATE OF NORTH CAROLINA	
STATE HIGHWAY 42	
PUBLIC WORKS COMMISSION	
SUBSTRUCTURE	
END BENT NO. 1	
MARCH 1955	
[Signature]	

