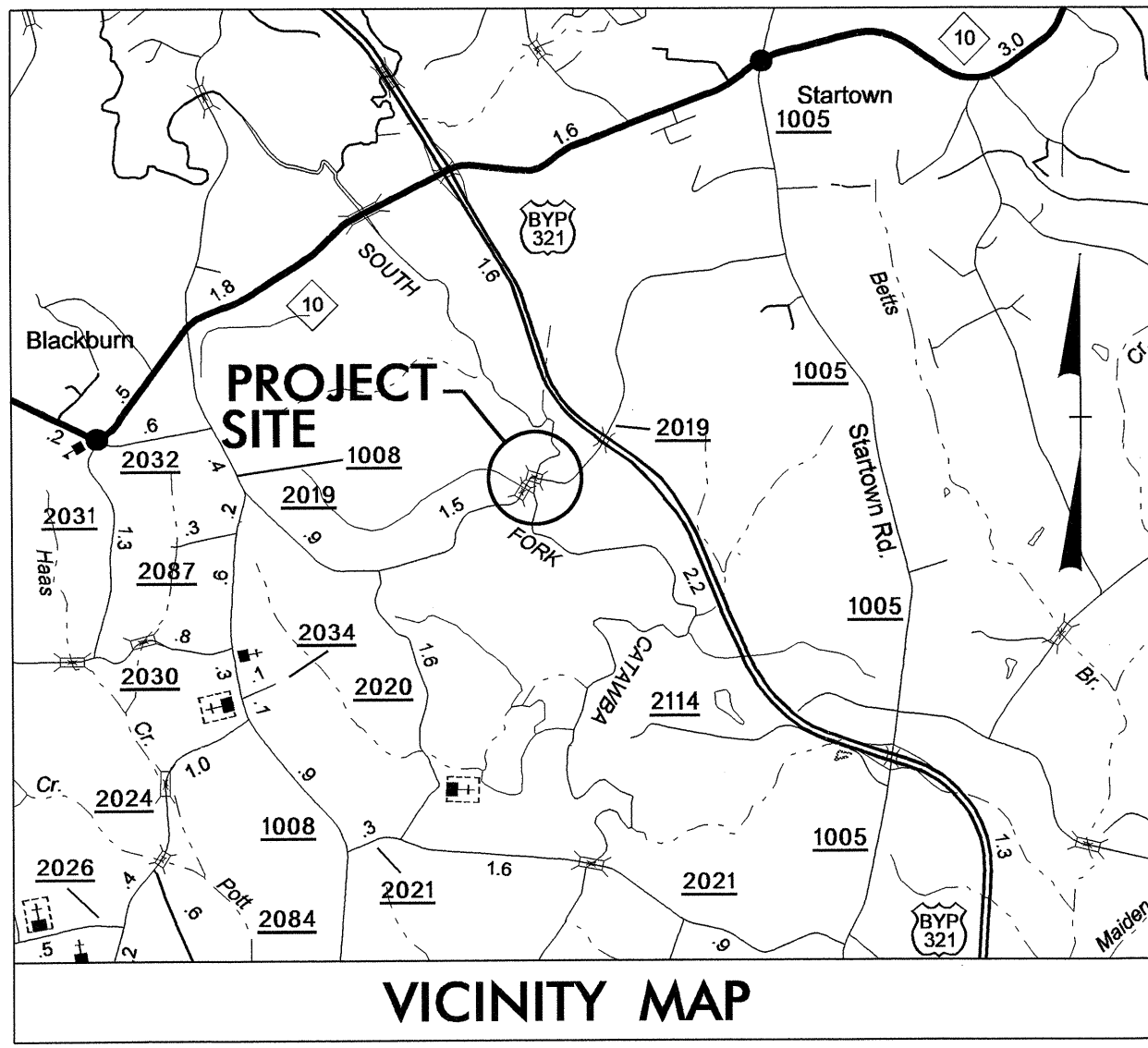


TIP PROJECT: B-4458

T.I.P. NO.	SHEET NO.
B-4458	UO-1

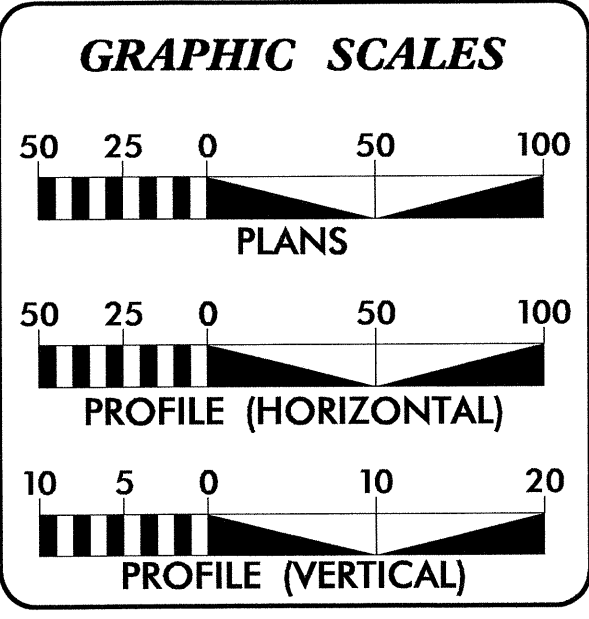
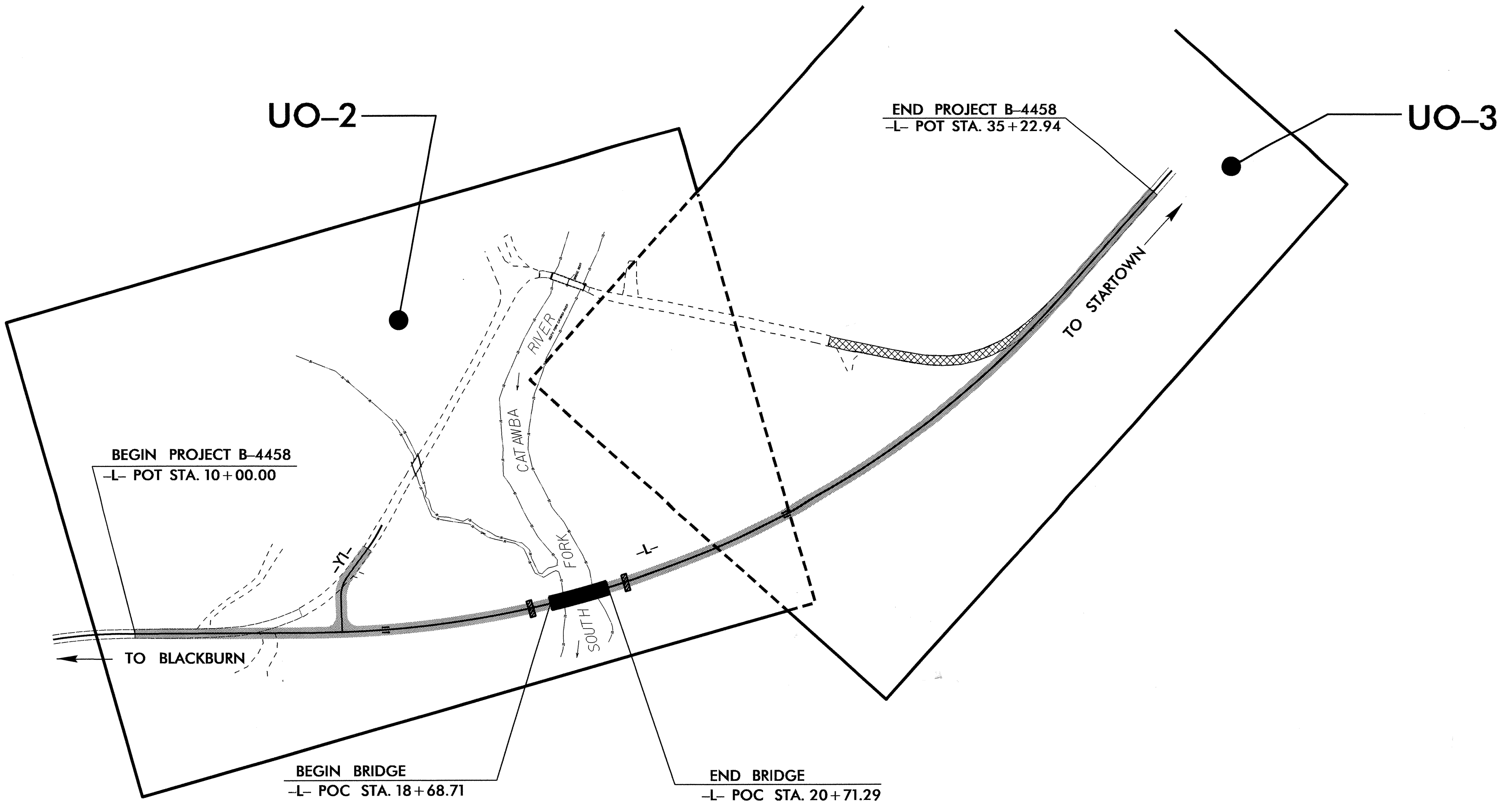
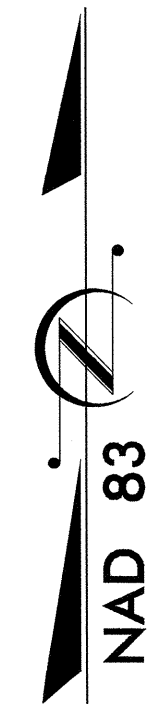
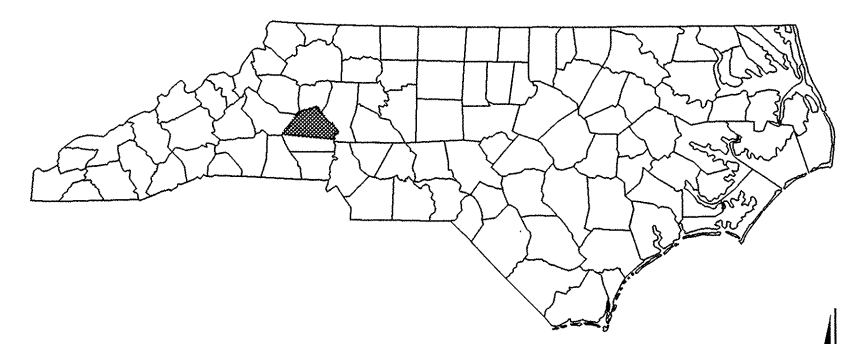


STATE OF NORTH CAROLINA  
DIVISION OF HIGHWAYS

**UTILITIES BY OTHERS PLANS  
CATAWBA COUNTY**

**LOCATION: BRIDGE NO 95 ON ROCKY FORD RD (SR 219)  
OVER THE SOUTH FORK CATAWBA RIVER**

**TYPE OF WORK: AERIAL DISTRIBUTION POWER**

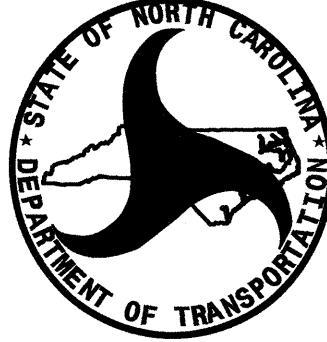


**INDEX OF SHEETS**

SHEET NO.	DESCRIPTION
UO-1	TITLE SHEET
UO-2	UTILITIES BY OTHERS PLAN SHEET

**UTILITY OWNER ON PROJECT**

(1) DUKE ENERGY



PREPARED IN THE OFFICE OF:  
**DIVISION OF HIGHWAYS  
UTILITIES ENGINEERING  
SECTION**

1555 MAIL SERVICES CENTER  
RALEIGH, NC 27699-1555  
PHONE (919) 707-6690  
FAX (919) 250-4151

**Roger Worthington, P.E.** UTILITIES SECTION ENGINEER  
**Carl A. Barclay, P.E.** UTILITIES SQUAD LEADER PROJECT ENGINEER  
**James E. Swinson** UTILITIES PROJECT DESIGNER

30-JUL-2012 14:28  
R:\Utilities\RDY\_Ut\Proj\B-4458.ut\_title\_uo1\_psh.dgn  
\$\$\$\$\$USERNAME\$\$\$\$\$

UTILITIES BY OTHERS

NOTE:  
ALL PROPOSED UTILITY WORK  
SHOWN ON THIS SHEET WILL  
BE DONE BY OTHERS

HONG SOUTHEAST PAAPHEEJ, INC  
DB 2331 PG 1006  
PB 54 PG 154

HONG SOUTHEAST PAAPHEEJ, INC  
DB 2331 PG 1006  
PB 54 PG 154

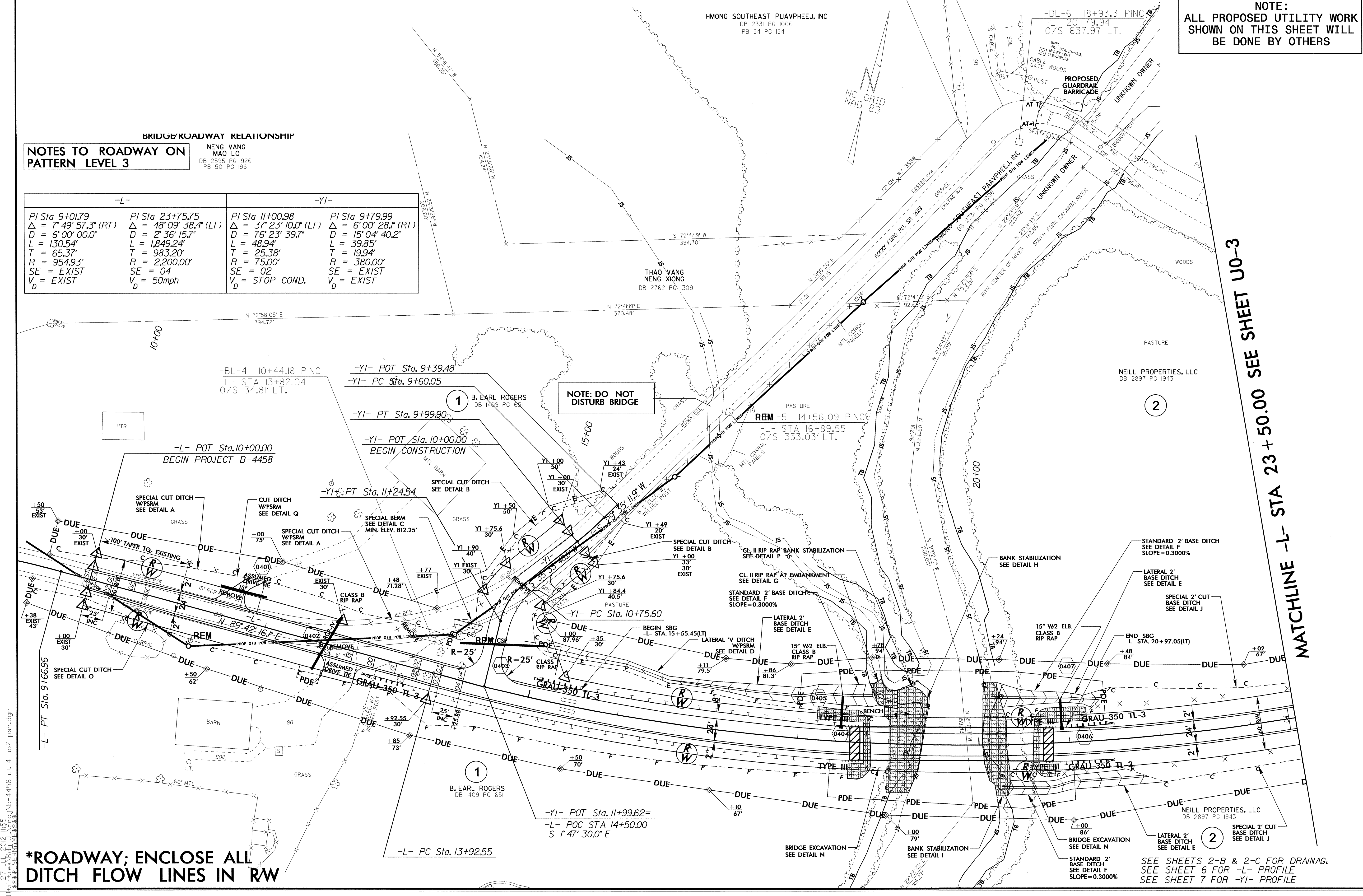
THAO YANG  
NENG XIONG  
DB 2762 PG 1309

NEILL PROPERTIES, LLC  
DB 2897 PG 1943

BRIDGE/ROADWAY RELATIONSHIP  
NOTES TO ROADWAY ON  
PATTERN LEVEL 3

-L-		-YI-	
PI Sta 9+01.79	PI Sta 23+75.75	PI Sta 11+00.98	PI Sta 9+79.99
$\Delta = 7^{\circ} 49' 57.3''$ (RT)	$\Delta = 48^{\circ} 09' 38.4''$ (LT)	$\Delta = 37^{\circ} 23' 10.0''$ (LT)	$\Delta = 6^{\circ} 00' 28.1''$ (RT)
$D = 6^{\circ} 00' 00.0''$	$D = 2^{\circ} 36' 15.7''$	$D = 76^{\circ} 23' 39.7''$	$D = 15^{\circ} 04' 40.2''$
$L = 130.54'$	$L = 1,849.24'$	$L = 48.94'$	$L = 39.85'$
$T = 65.37'$	$T = 983.20'$	$T = 25.38'$	$T = 19.94'$
$R = 954.93'$	$R = 2,200.00'$	$R = 75.00'$	$R = 380.00'$
SE = EXIST	SE = 04	SE = EXIST	SE = EXIST
V = EXIST	V = 50mph	V = STOP COND.	V = EXIST

27-JUL-2012 14:55  
 R:\111109\Road\UO\UO-P01\B-4458.ut\_4\_vo2\_psh.dgn  
 5/14/99



**\*ROADWAY; ENCLOSE ALL  
DITCH FLOW LINES IN RW**

SEE SHEETS 2-B & 2-C FOR DRAINAGE  
SEE SHEET 6 FOR -L- PROFILE  
SEE SHEET 7 FOR -YI- PROFILE

5/14/09

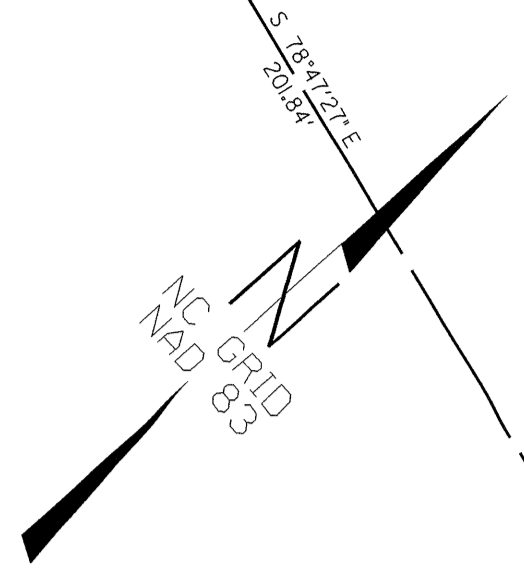
PROJECT REFERENCE NO. B-4458 SHEET NO. UO-3

# UTILITIES BY OTHERS

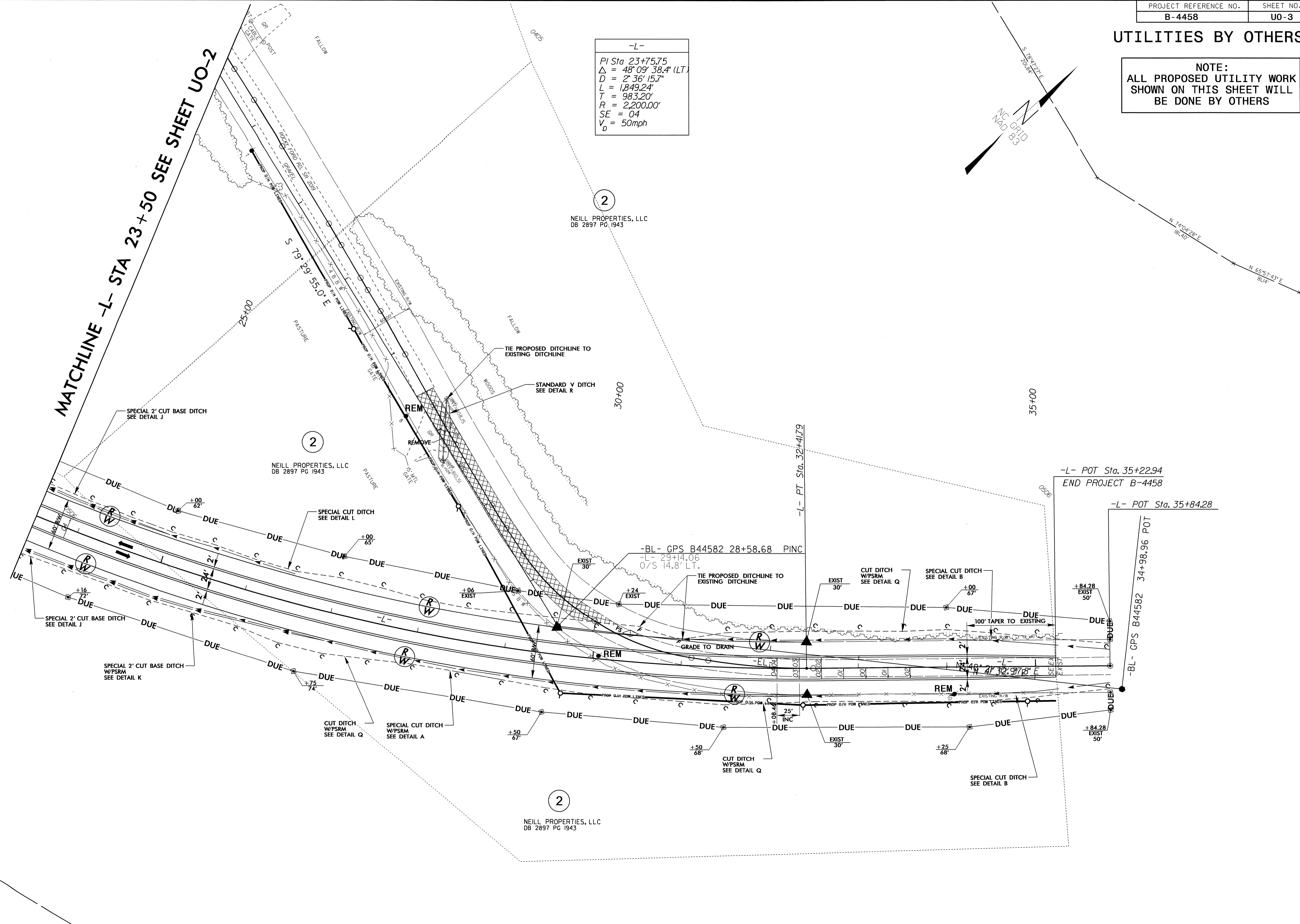
**NOTE:**  
ALL PROPOSED UTILITY WORK SHOWN ON THIS SHEET WILL BE DONE BY OTHERS

-L-

PI Sta 23+75.75  
 $\Delta = 48^\circ 09' 38.4''$  (LT.)  
 $D = 2' 36.157''$   
 $L = 1,849.24'$   
 $T = 983.20'$   
 $R = 2,200.00'$   
 $SE = 04$   
 $V_d = 50\text{mph}$



MATCHLINE -L- STA 23+50 SEE SHEET UO-2



R:\Utilities\Richie\Project\B-4458-ut-5-uo3-pah.dgn 27-JUL-2012 11:57