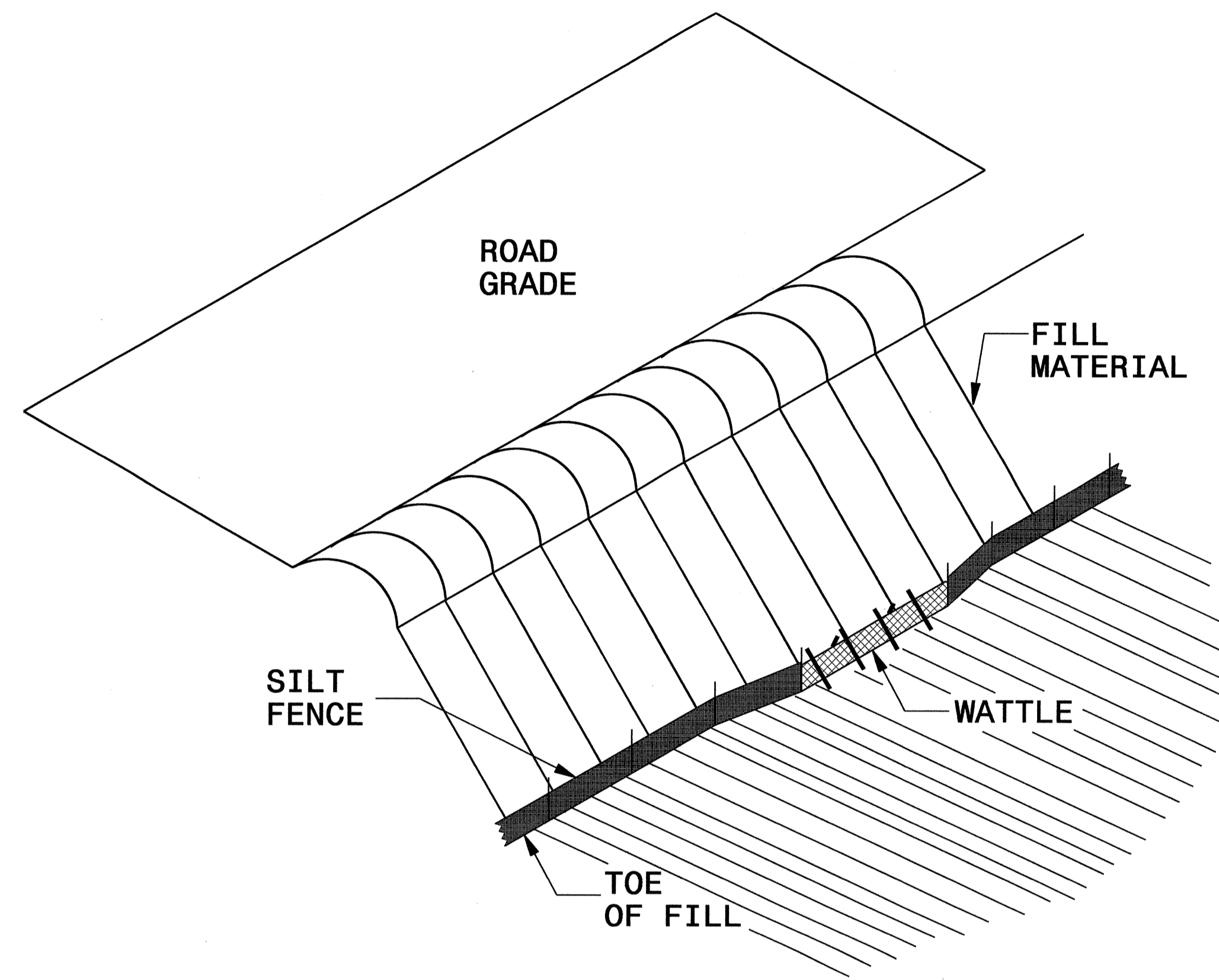
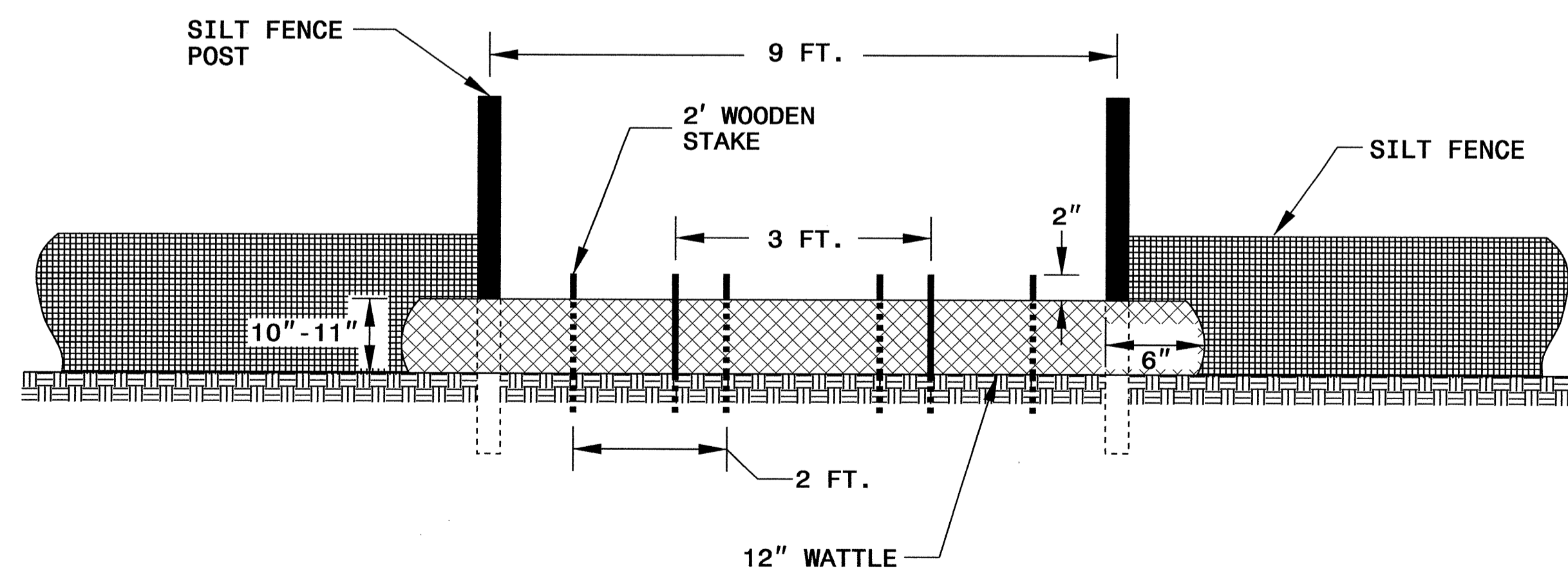


SILT FENCE WATTLE BREAK DETAIL

PROJECT REFERENCE NO.		SHEET NO.	
B-4458		EC-2A	
RW SHEET NO.			
ROADWAY DESIGN ENGINEER		HYDRAULICS ENGINEER	



ISOMETRIC VIEW

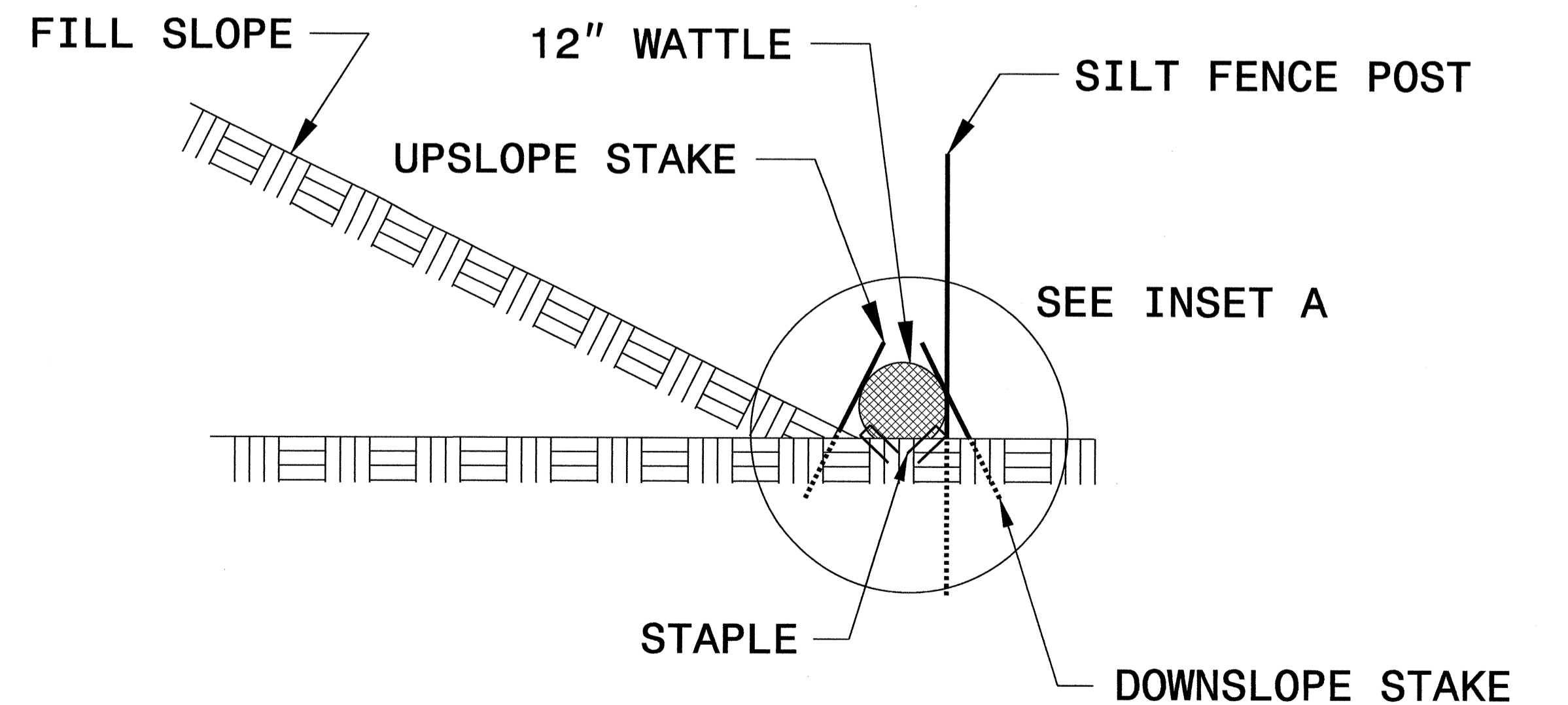
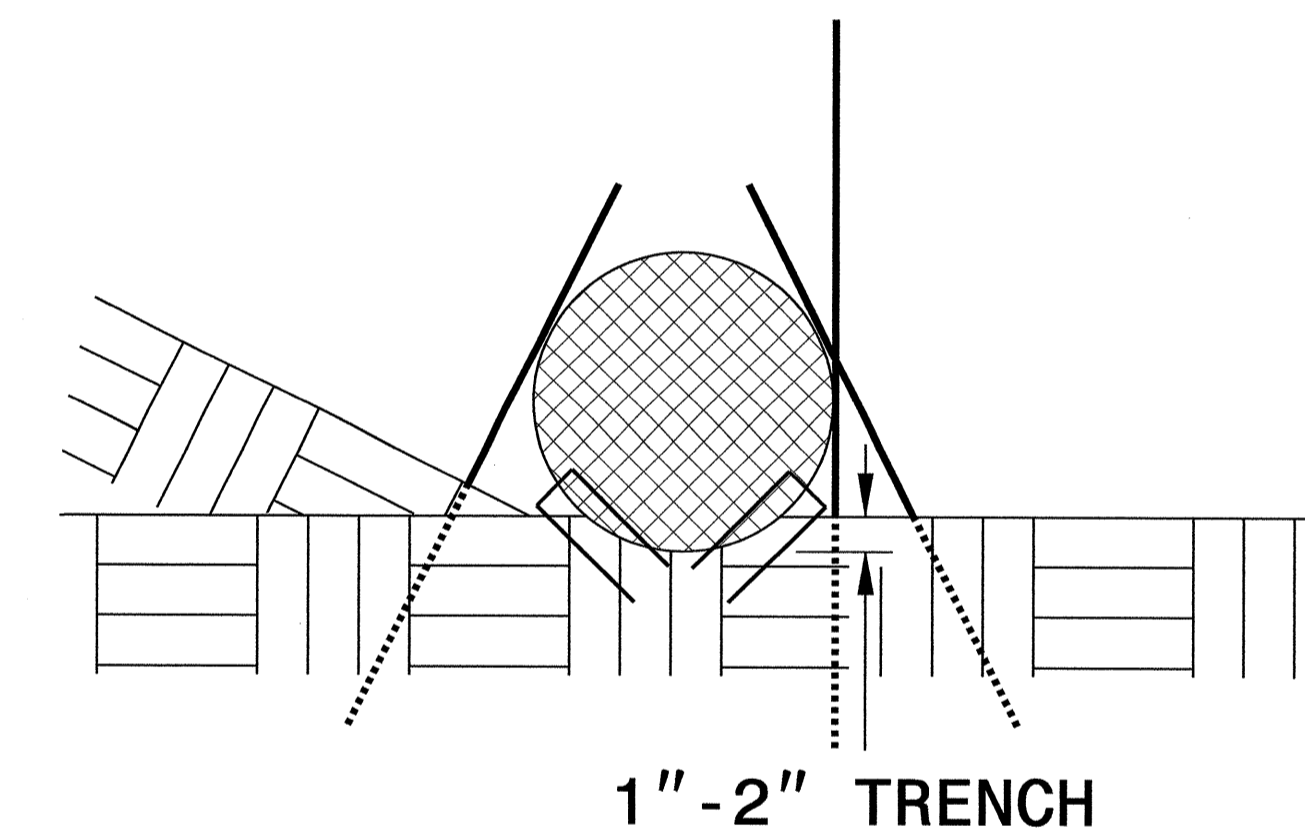


VIEW FROM SLOPE

NOTES:

- USE MINIMUM 12 IN. DIAMETER EXCELSIOR WATTLE AND LENGTH OF 10 FT.
- EXCAVATE A 1 TO 2 INCH TRENCH FOR WATTLE TO BE PLACED.
- DO NOT PLACE WATTLE ON TOE OF SLOPE.
- USE 2 FT. WOODEN STAKES WITH A 2 IN. BY 2 IN. NOMINAL CROSS SECTION.
- INSTALL A MINIMUM OF 2 UPSLOPE STAKES AND 4 DOWNSLOPE STAKES AT AN ANGLE TO WEDGE WATTLE TO GROUND.
- PROVIDE STAPLES MADE OF 0.125 IN. DIAMETER STEEL WIRE FORMED INTO A U SHAPE NOT LESS THAN 12" IN LENGTH.
- INSTALL STAPLES APPROXIMATELY EVERY 1 LINEAR FOOT ON BOTH SIDES OF WATTLE AND AT EACH END TO SECURE IT TO THE SOIL.
- WATTLE INSTALLATION CAN BE ON OUTSIDE OF THE SILT FENCE AS DIRECTED.
- INSTALL TEMPORARY SILT FENCE IN ACCORDANCE WITH SECTION 1605 OF THE STANDARD SPECIFICATIONS.

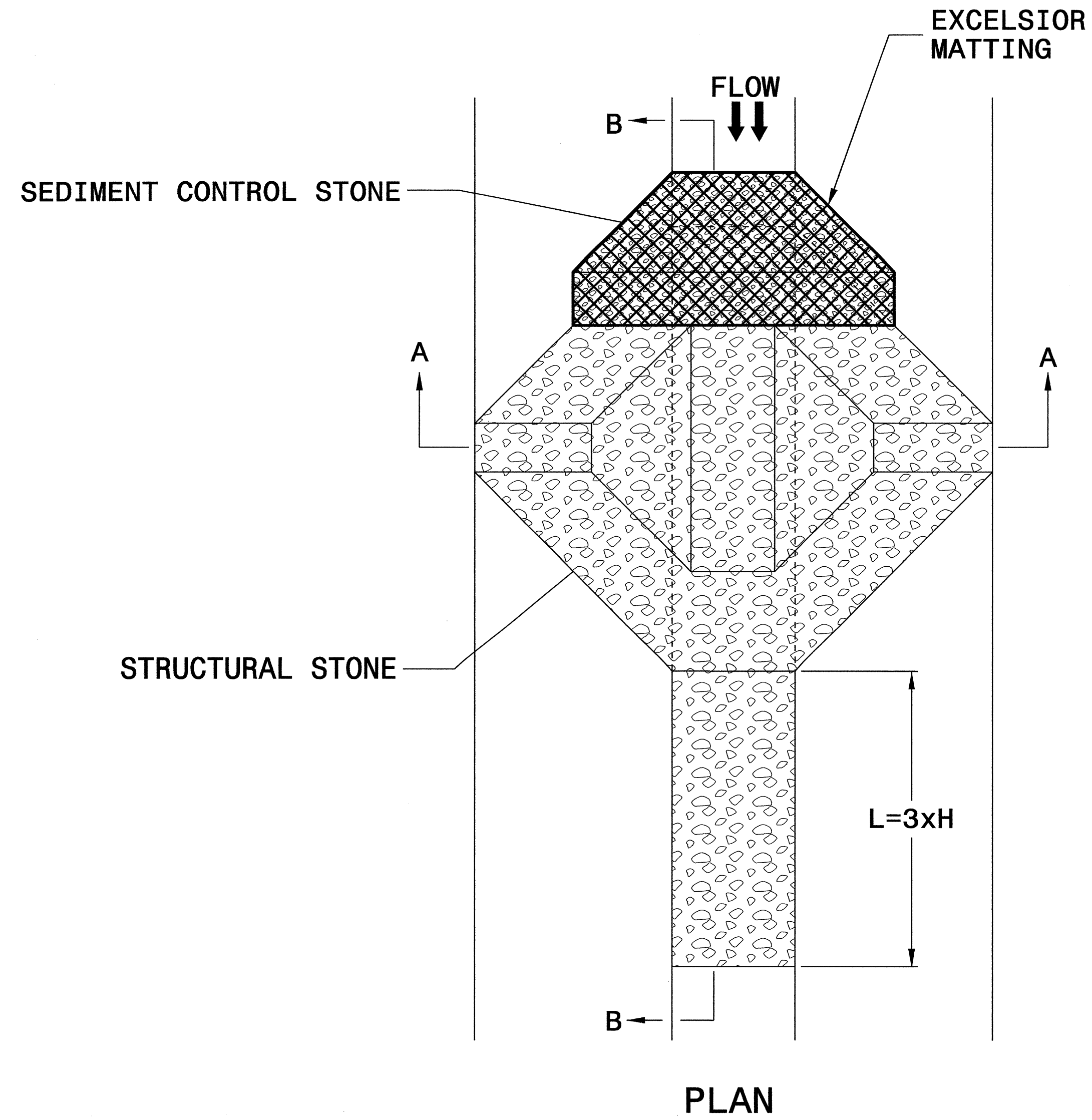
INSET A



SIDE VIEW

PROJECT REFERENCE NO. B-4458	SHEET NO. EC-2B
R/W SHEET NO.	
ROADWAY DESIGN ENGINEER	HYDRAULICS ENGINEER

TEMPORARY ROCK SILT CHECK TYPE 'A' WITH EXCELSIOR MATTING AND POLYACRYLAMIDE (PAM)

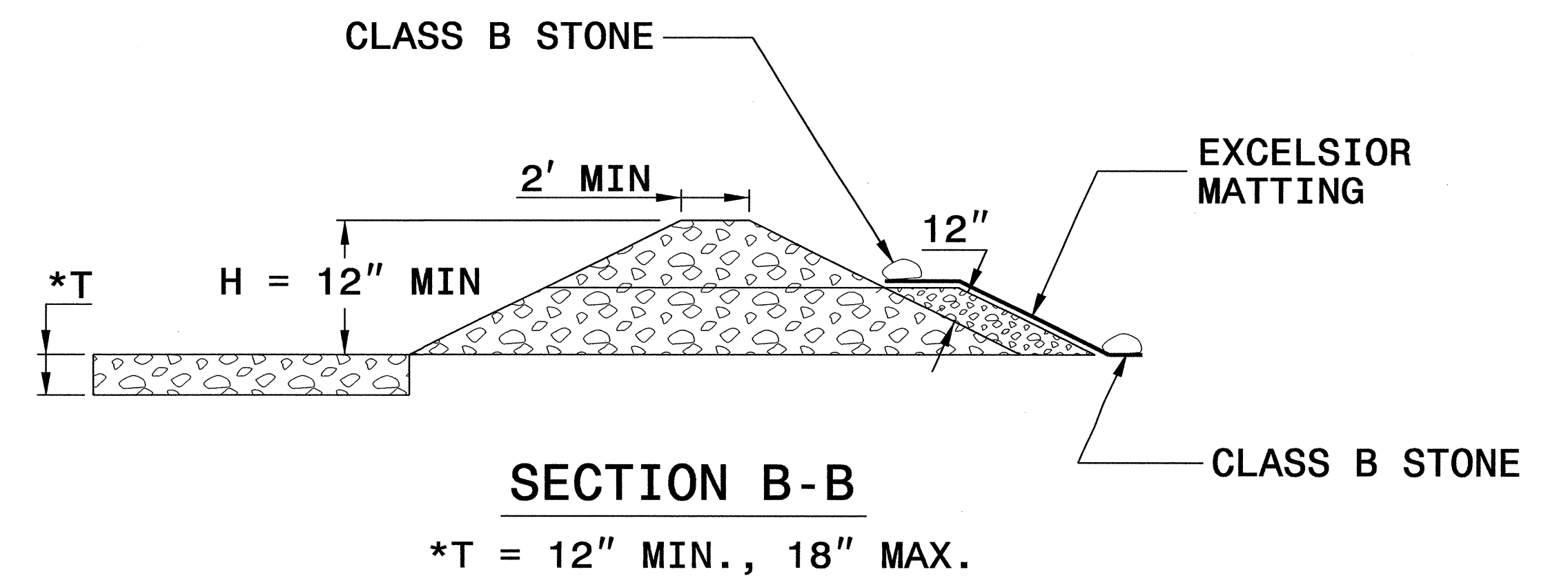
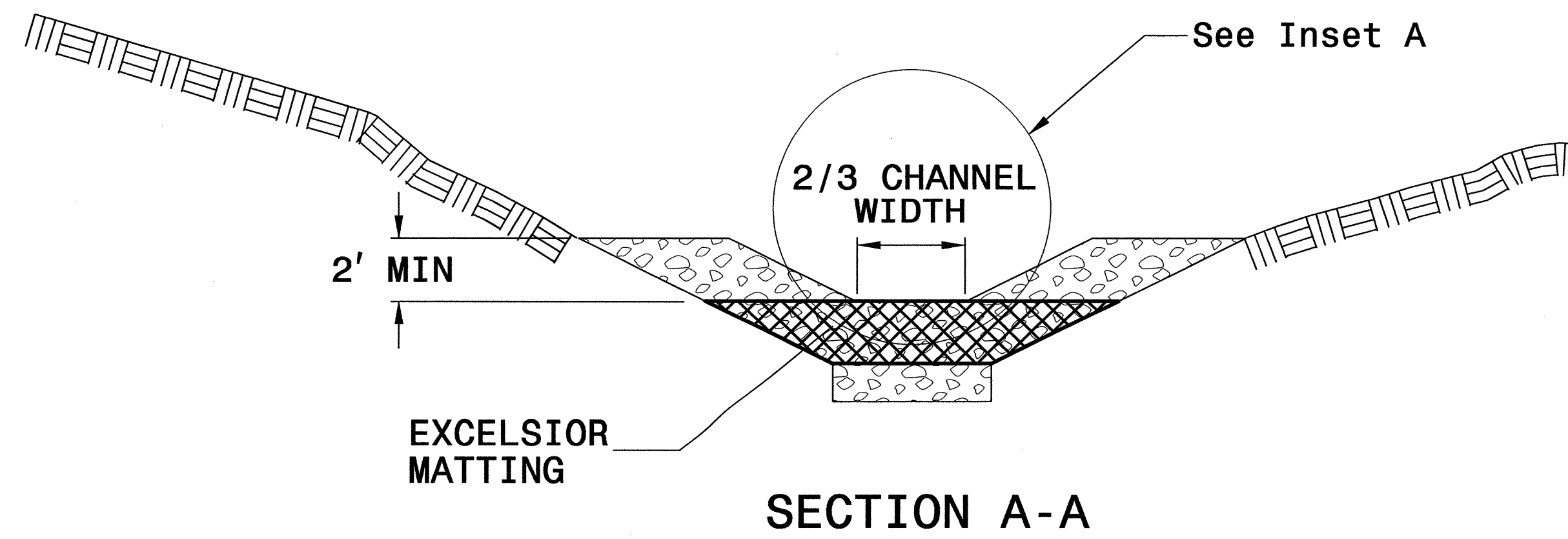
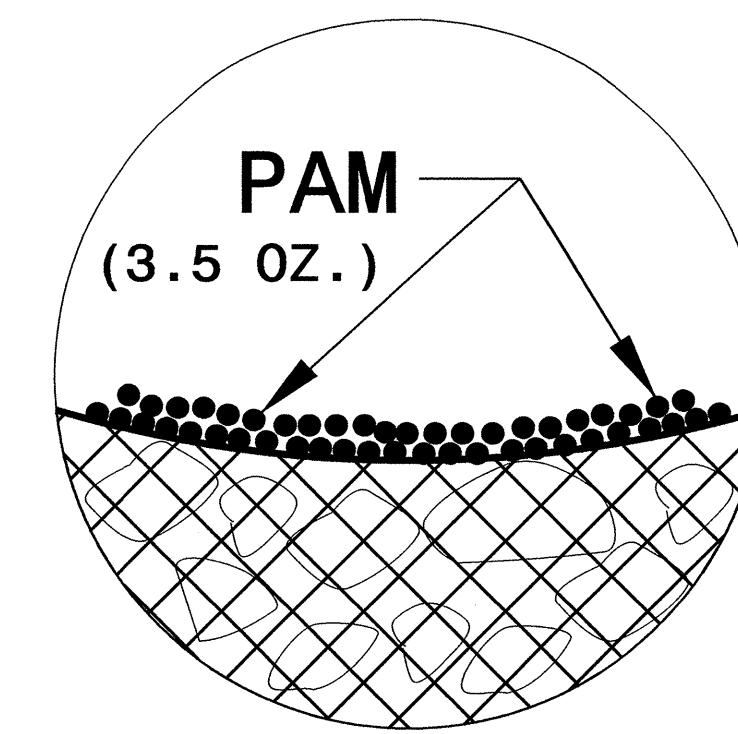


NOTES

USE EXCELSIOR FOR MATTING MATERIAL AND ANCHOR MATTING SECTION AT TOP AND BOTTOM WITH CLASS B STONE.

PRIOR TO POLYACRYLAMIDE (PAM) APPLICATION, OBTAIN A SOIL SAMPLE FROM PROJECT LOCATION, AND FROM OFFSITE MATERIAL, AND ANALYZE FOR APPROPRIATE PAM FLOCCULANT TO BE APPLIED TO EACH ROCK SILT CHECK.

INITIALLY APPLY 3.5 OUNCES OF POLYACRYLAMIDE (PAM) TO TOP OF MATTING SECTION AND AFTER EVERY RAINFALL EVENT THAT EQUALS OR EXCEEDS 0.50 INCHES.



NOT TO SCALE

DIVISION OF HIGHWAYS
STATE OF NORTH CAROLINA

PROJECT REFERENCE NO. <i>B-4458</i>	SHEET NO. <i>EC-3A</i>
ROADWAY DESIGN ENGINEER	HYDRAULICS ENGINEER

SOIL STABILIZATION TIMEFRAMES

<i>SITE DESCRIPTION</i>	<i>STABILIZATION TIME</i>	<i>TIMEFRAME EXCEPTIONS</i>
PERIMETER DIKES, SWALES, DITCHES AND SLOPES	7 DAYS	NONE
HIGH QUALITY WATER (HQW) ZONES	7 DAYS	NONE
SLOPES STEEPER THAN 3:1	7 DAYS	IF SLOPES ARE 10' OR LESS IN LENGTH AND ARE NOT STEEPER THAN 2:1, 14 DAYS ARE ALLOWED.
SLOPES 3:1 OR FLATTER	14 DAYS	7 DAYS FOR SLOPES GREATER THAN 50' IN LENGTH.
ALL OTHER AREAS WITH SLOPES FLATTER THAN 4:1	14 DAYS	NONE, EXCEPT FOR PERIMETERS AND HQW ZONES.

8/17/99

PROJECT REFERENCE NO.	SHEET NO.
B-4458	EC-4/CONST.4
RW SHEET NO.	HYDRAULICS ENGINEER
ROADWAY DESIGN ENGINEER	

NOTE: PLACE TEMPORARY ROCK SEDIMENT DAMS TYPE - B AND TEMPORARY ROCK SILT CHECKS TYPE - A AT DRAINAGE OUTLETS.

CLEARING AND GRUBBING EROSION CONTROL FOR CONSTRUCTION SHEET 4

NOTE: UTILIZE SPECIAL STILLING BASIN WHERE APPLICABLE.

HONG SOUTHEAST PAAPHEEJ, INC
DB 2331 PG 1006
PB 54 PG 154

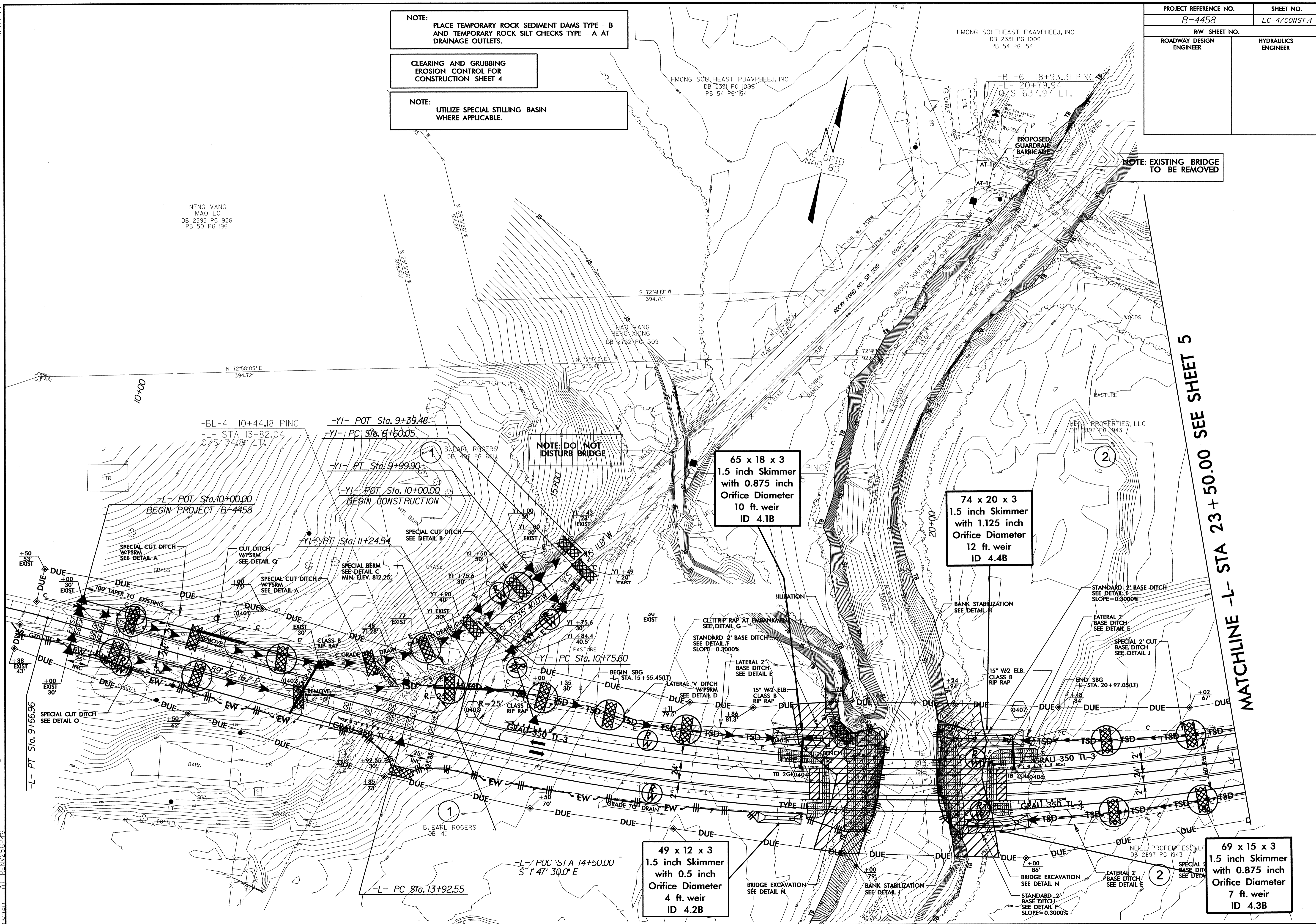
NENG VANG
MAO LO
DB 2595 PG 926
PB 50 PG 196

HONG SOUTHEAST PAAPHEEJ, INC
DB 2331 PG 1006
PB 54 PG 154

THAO VANG
NENG XIONG
DB 2762 PG 1309

NEILL PROPERTIES, LLC
DB 2897 PG 1943

NOTE: EXISTING BRIDGE TO BE REMOVED



65 x 18 x 3
1.5 inch Skimmer
with 0.875 inch
Orifice Diameter
10 ft. weir
ID 4.1B

74 x 20 x 3
1.5 inch Skimmer
with 1.125 inch
Orifice Diameter
12 ft. weir
ID 4.4B

49 x 12 x 3
1.5 inch Skimmer
with 0.5 inch
Orifice Diameter
4 ft. weir
ID 4.2B

69 x 15 x 3
1.5 inch Skimmer
with 0.875 inch
Orifice Diameter
7 ft. weir
ID 4.3B

NOTE: DO NOT
DISTURB BRIDGE

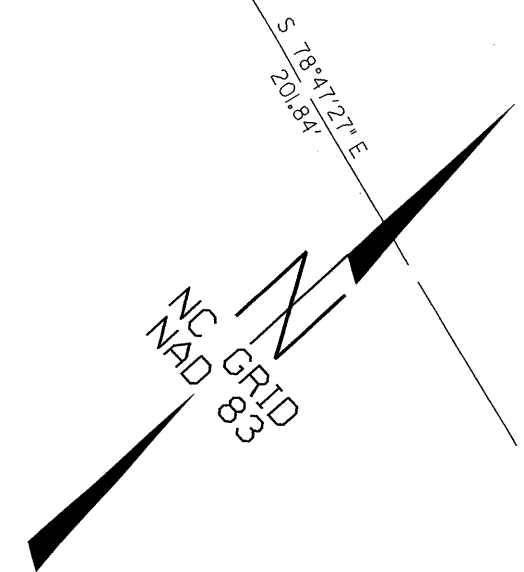
MATCHLINE -L- STA 23 + 50.00 SEE SHEET 5

05 JUL 2012 14:06 Design: b4458-EC-psh4.dgn
Location: C:\PROJECTS\B4458\DRAWING\2553.DWG

8/17/99

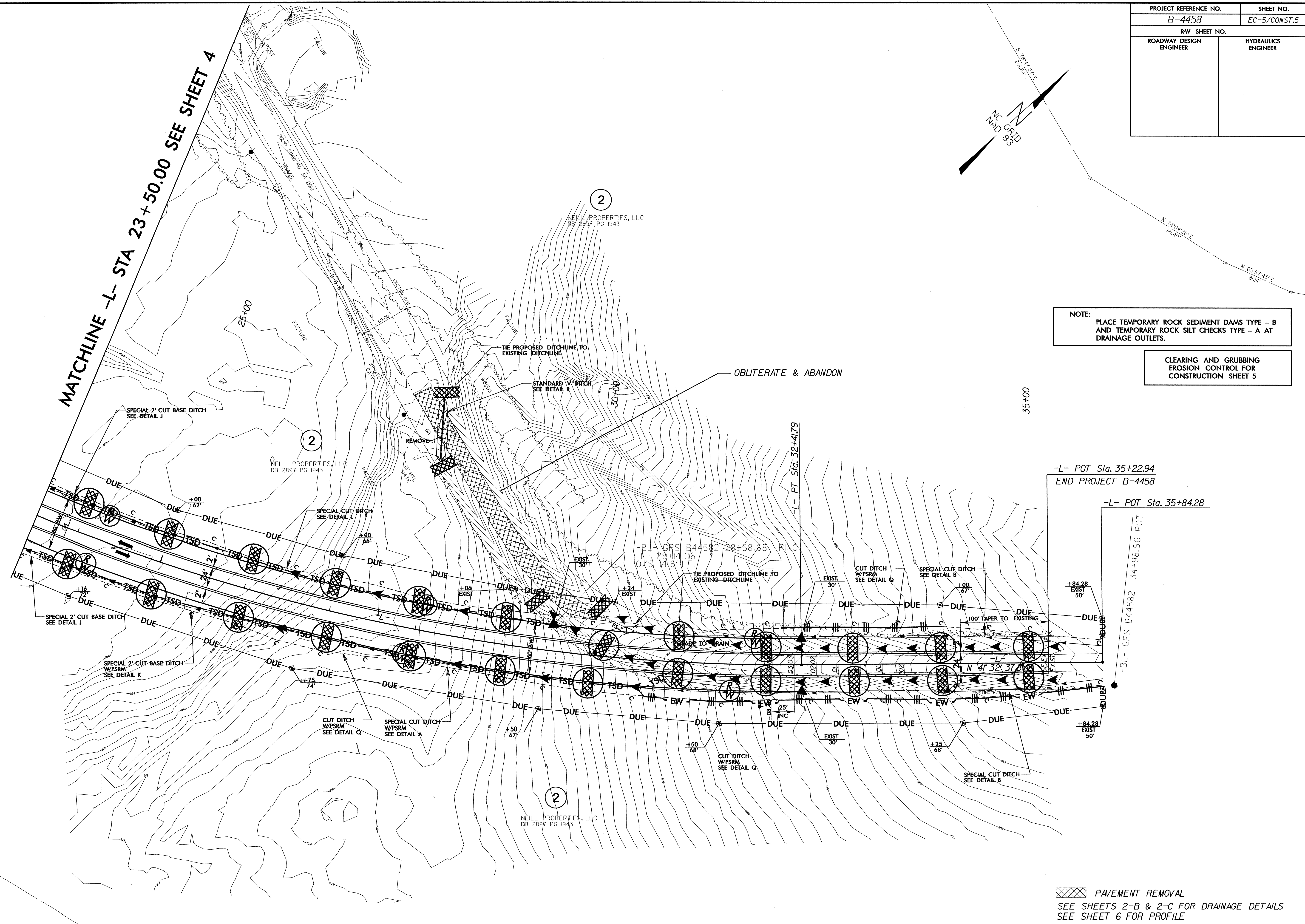
PROJECT REFERENCE NO.	SHEET NO.
B-4458	EC-5/CONST.5
RW SHEET NO.	
ROADWAY DESIGN ENGINEER	HYDRAULICS ENGINEER

MATCHLINE -L- STA 23+50.00 SEE SHEET 4



NOTE: PLACE TEMPORARY ROCK SEDIMENT DAMS TYPE - B AND TEMPORARY ROCK SILT CHECKS TYPE - A AT DRAINAGE OUTLETS.

CLEARING AND GRUBBING EROSION CONTROL FOR CONSTRUCTION SHEET 5



-L- POT Sta. 35+22.94
END PROJECT B-4458

-L- POT Sta. 35+84.28

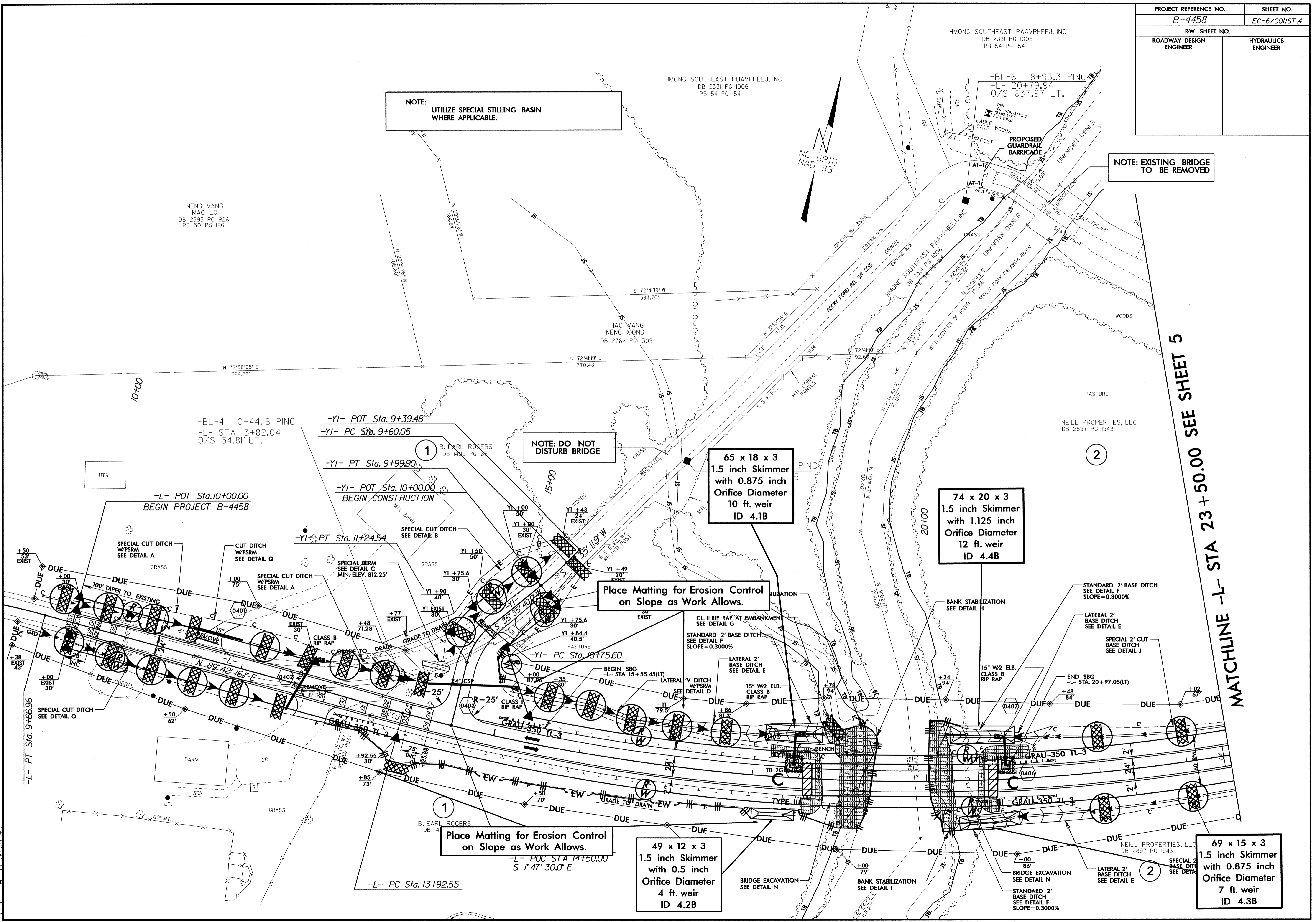
-BL- GPS B44582 34+98.96 POT

PAVEMENT REMOVAL
SEE SHEETS 2-B & 2-C FOR DRAINAGE DETAILS
SEE SHEET 6 FOR PROFILE

05-Jul-2012 14:07
R:\Environmental\Design\B4458_EC_psh5.dgn
rehan AT BENV256946

PROJECT REFERENCE NO.	SHEET NO.
B-4458	EC-6/CONST.4
RW SHEET NO.	
ROADWAY DESIGN ENGINEER	HYDRAULICS ENGINEER

8/17/99
 05-JUL-2012 14:07
 R:\Environmental\Design\B4458-EC_psh4.dgn
 AT: RBN/256365

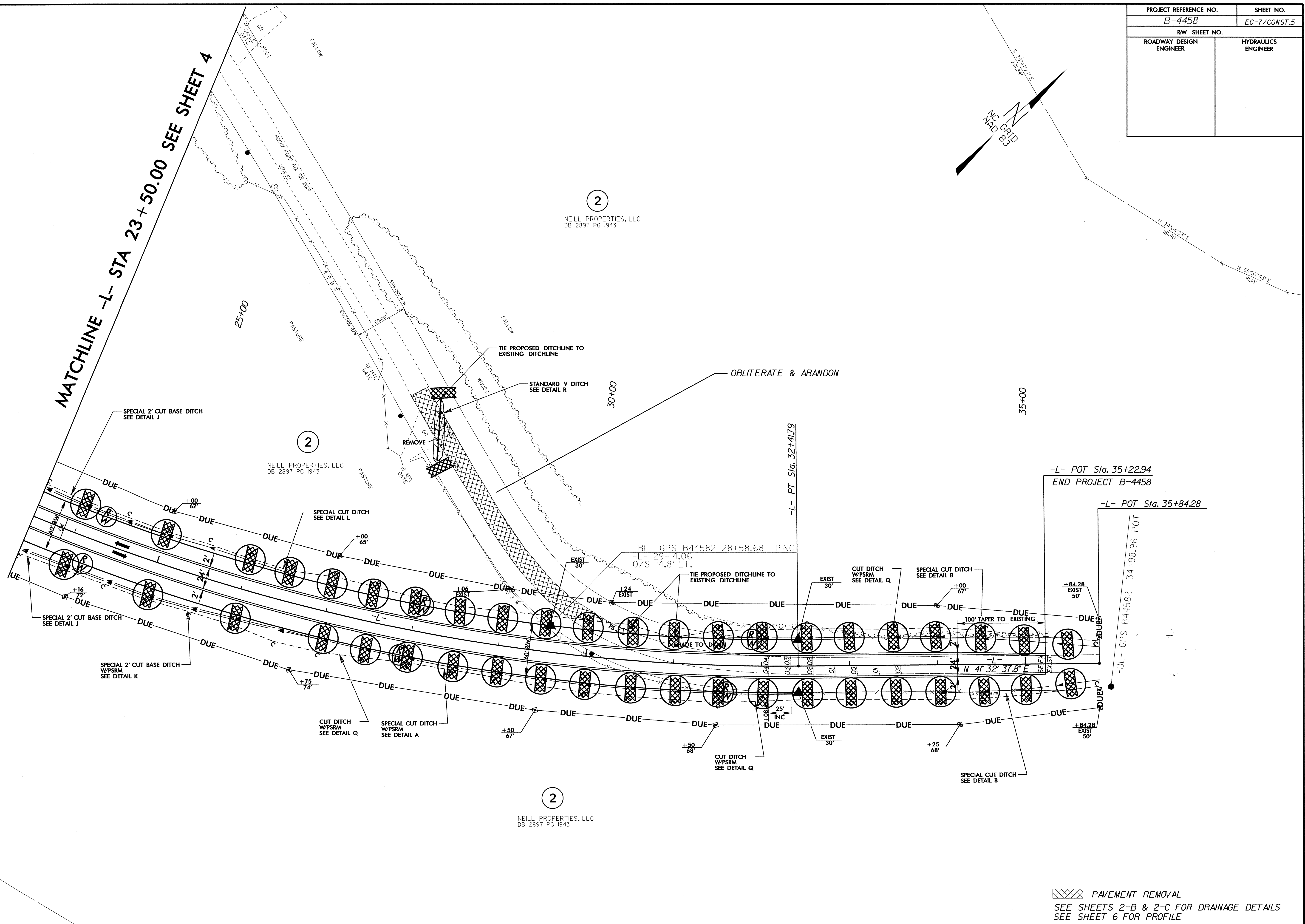
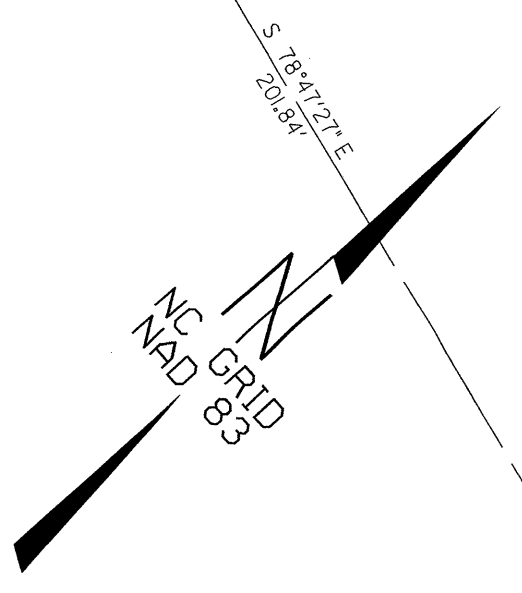


MATCHLINE -L- STA 23+50.00 SEE SHEET 5

PROJECT REFERENCE NO. B-4458	SHEET NO. EC-7/CONST.5
RW SHEET NO.	
ROADWAY DESIGN ENGINEER	HYDRAULICS ENGINEER

8/17/99

MATCHLINE -L- STA 23+50.00 SEE SHEET 4



-L- POT Sta. 35+22.94
END PROJECT B-4458

-L- POT Sta. 35+84.28

-BL- GPS B44582 34+98.96 POT

PAVEMENT REMOVAL
 SEE SHEETS 2-B & 2-C FOR DRAINAGE DETAILS
 SEE SHEET 6 FOR PROFILE

85-JUL-2012 4:09 PM
 C:\Environment\B4458\B4458-EC-psht5.dgn
 User: jrb
 Plot: 289716