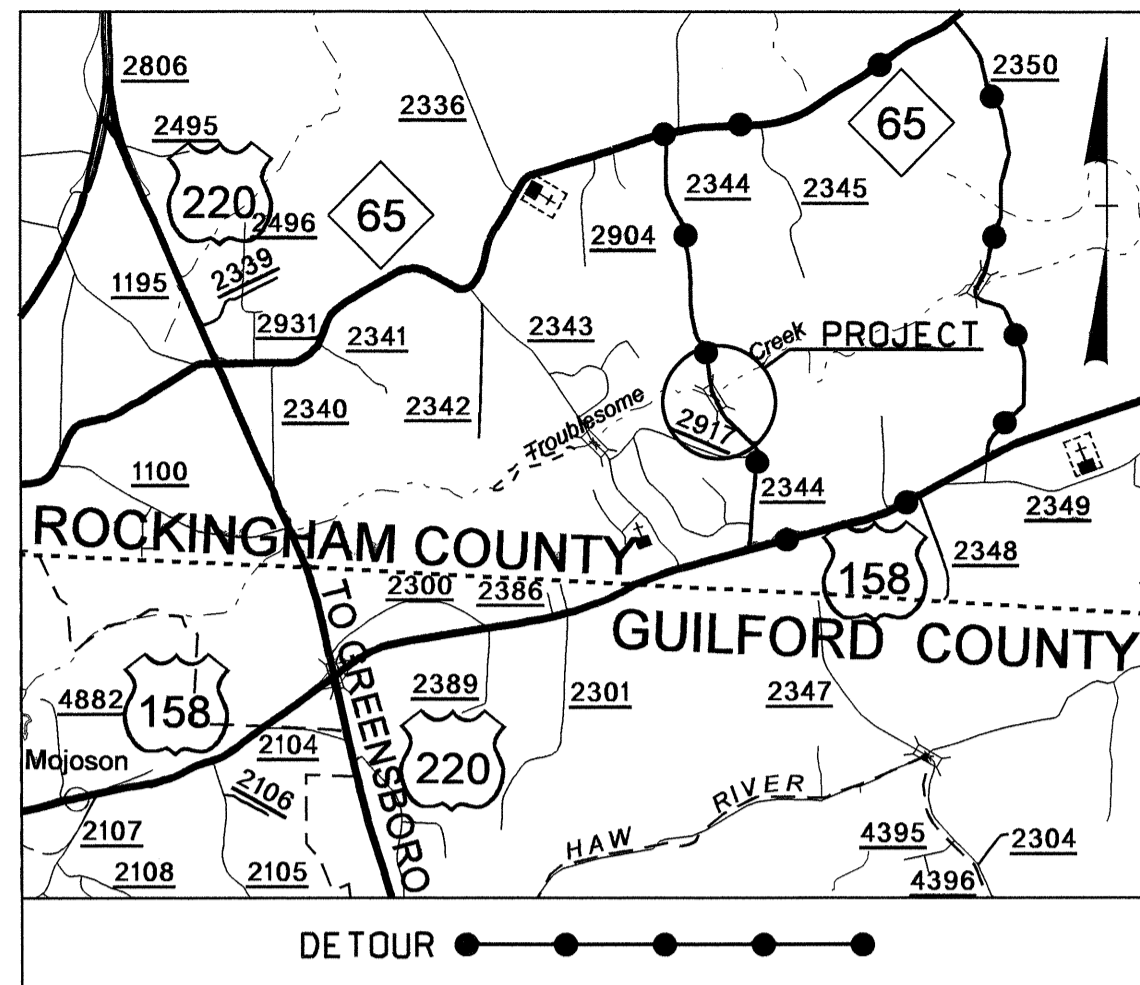


09/08/99

See Sheet 1-A For Index of Sheets  
See Sheet 1-B For Conventional Symbols



VICINITY MAP

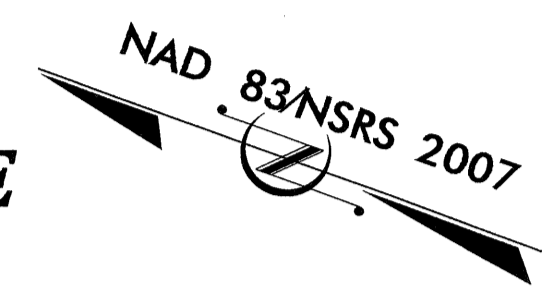
# STATE OF NORTH CAROLINA DIVISION OF HIGHWAYS

## UTILITIES BY OTHERS PLANS ROCKINGHAM COUNTY

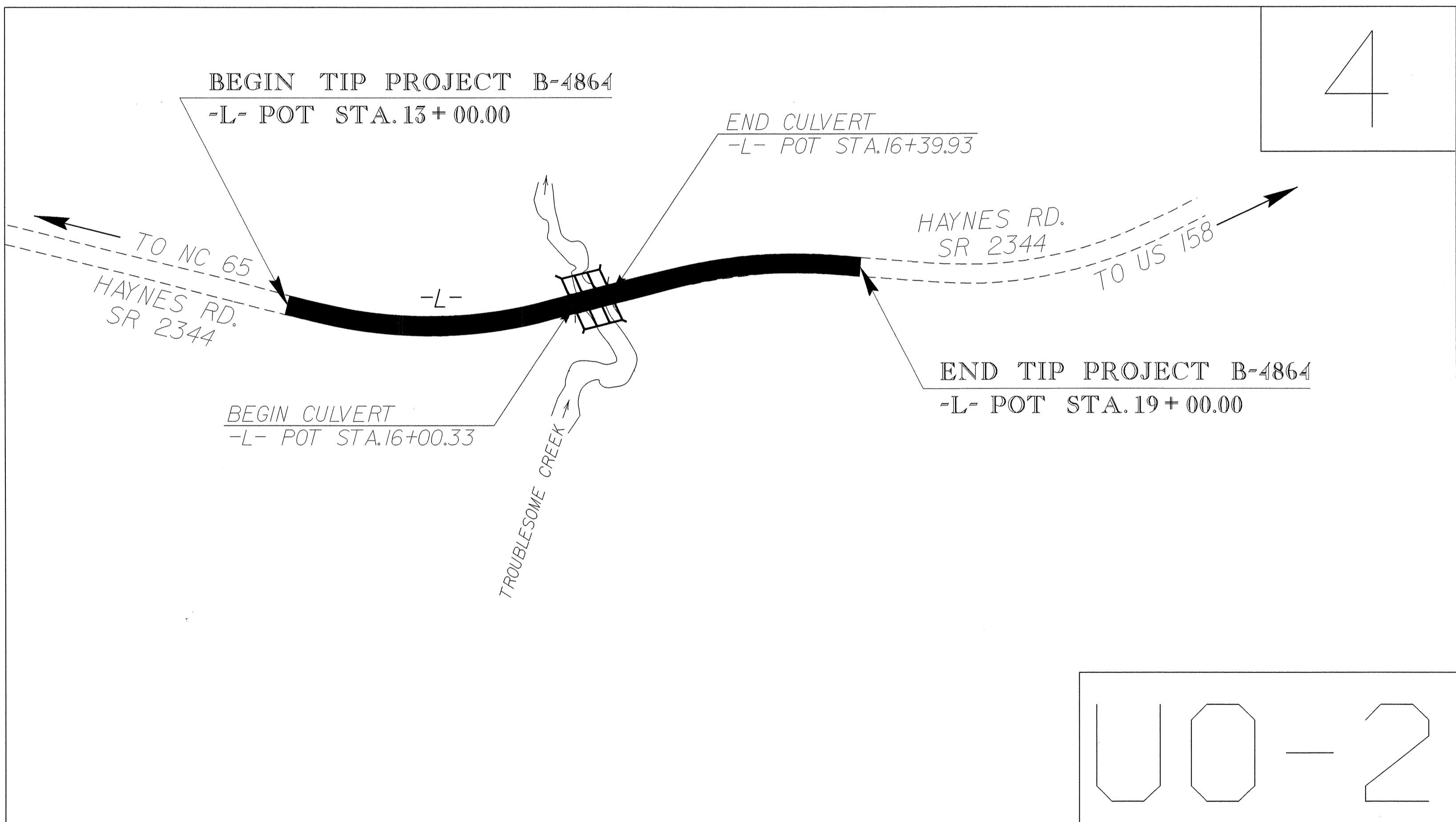
LOCATION: REPLACE BRIDGE 13 OVER TROUBLESOME  
CREEK ON SR 2344

TYPE OF WORK: UTILITY WORK

T.I.P. NO.	SHEET NO.
B-4864	UO-1



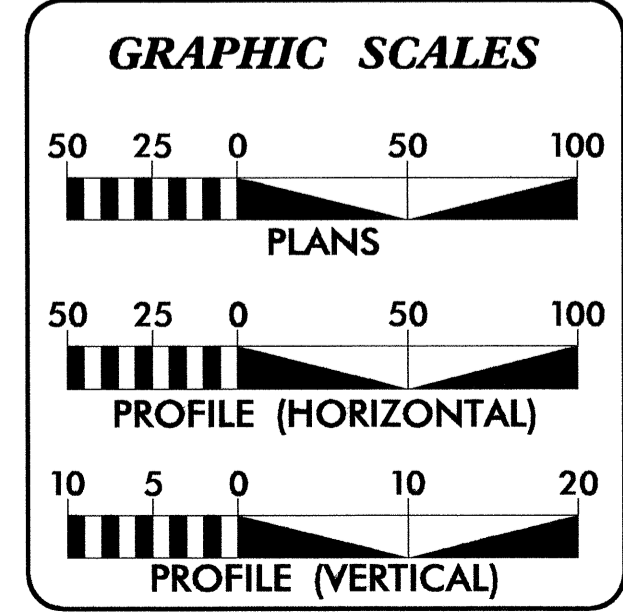
TIP PROJECT: B-4864



4

UO-2

NOTES: (1) CLEARING ON THIS PROJECT SHALL BE PERFORMED TO THE LIMITS ESTABLISHED BY METHOD  
(2) THIS PROJECT IS NOT WITHIN ANY MUNICIPAL BOUNDARIES.



**INDEX OF SHEETS**

SHEET NO.	DESCRIPTION
UO-1	TITLE SHEET
UO-2	UTILITY BY OTHERS PLAN SHEETS

**UTILITY OWNERS ON PROJECT**

- (1) Duke Energy - Power
- (2) AT&T - Telephone

PREPARED IN THE OFFICE OF:  
**DIVISION OF HIGHWAYS**  
**UTILITIES UNIT**  
**UTILITIES ENGINEERING**

1591 MAIL SERVICES CENTER  
RALEIGH NC 27699-1591  
PHONE (919) 707-6690  
FAX (919) 250-4151

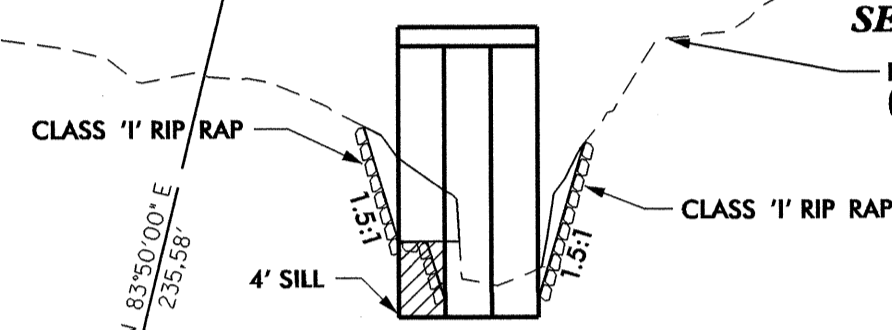
**Roger Worthington, P.E.** UTILITIES SECTION ENGINEER  
**Steve McKee, P.E.** UTILITIES SQUAD LEADER PROJECT ENGINEER  
**Jamshid Hafshejani** UTILITIES PROJECT DESIGNER

06-NOV-2012 09:21  
R:\Utilities\Rdy\_Ut\Proj\B-4864\_Ut\_Title\_U01\_psh.dgn  
\$\$\$\$\$USERNAME\$\$\$\$\$

### UTILITIES BY OTHERS

NOTE:  
ALL PROPOSED UTILITY WORK  
SHOWN ON THIS SHEET WILL  
BE DONE BY OTHERS

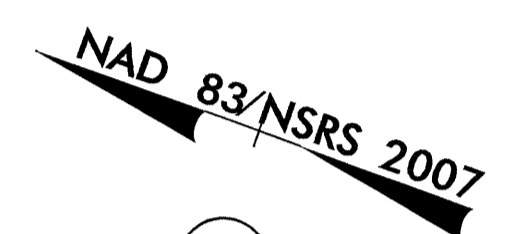
**TYPICAL CHANNEL DETAIL  
(FLOODPLAIN / BENCH) UP/DOWNSTREAM**



NOTE: TAPER BENCH TO  
EXISTING CHANNEL WIDTH.  
SEE PLAN VIEW

EXIST. NATURAL GROUND (US)  
(L to R looking downstream)

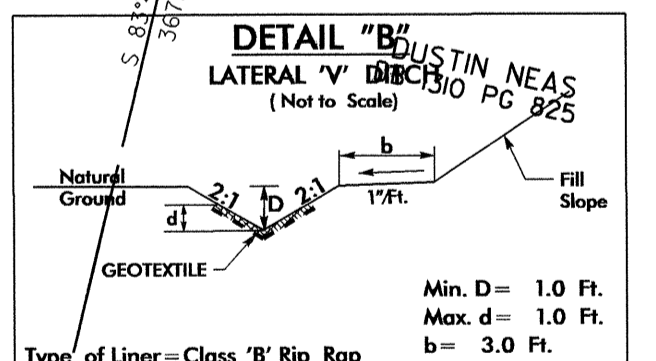
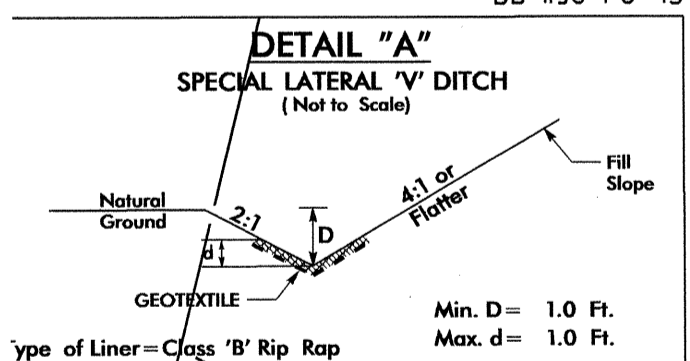
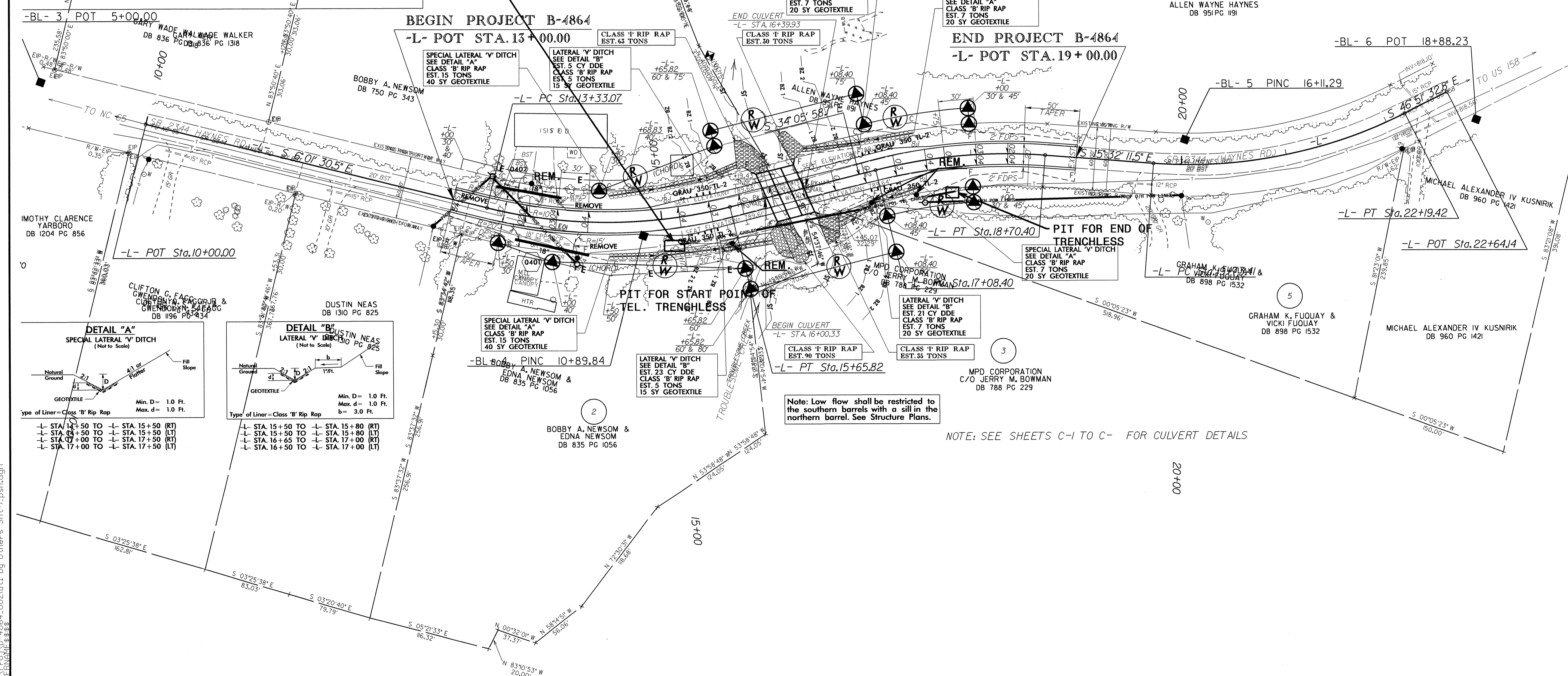
PI Sta	Δ	L	T	R	S.E.
14+51.83	28° 04' 28.3" (LT)	232.75'	118.76'	475.00'	SEE PLANS
17+90.12	18° 33' 47.3" (RT)	161.99'	81.71'	500.00'	SEE PLANS
20+99.57	31° 19' 21.3" (LT)	246.01'	126.16'	450.00'	EXISTING



**PIT FOR START POINT OF  
TEL. TRENCHLESS**

**BEGIN PROJECT B-4864  
-L- POT STA. 13+00.00**

**END PROJECT B-4864  
-L- POT STA. 19+00.00**



- |                                       |                                       |
|---------------------------------------|---------------------------------------|
| -L- STA. 14+50 TO -L- STA. 15+50 (RT) | -L- STA. 15+50 TO -L- STA. 15+80 (RT) |
| -L- STA. 15+50 TO -L- STA. 15+50 (LT) | -L- STA. 15+80 TO -L- STA. 16+15 (RT) |
| -L- STA. 16+00 TO -L- STA. 17+50 (RT) | -L- STA. 16+15 TO -L- STA. 17+00 (RT) |
| -L- STA. 17+00 TO -L- STA. 17+50 (LT) | -L- STA. 16+50 TO -L- STA. 17+00 (LT) |

Note: Low flow shall be restricted to  
the southern barrels with a sill in the  
northern barrel. See Structure Plans.

NOTE: SEE SHEETS C-1 TO C- FOR CULVERT DETAILS

06-NOV-2012 09:29  
C:\p01\B-4864\_UO2\utl by Others Shp\psd.dgn  
5/14/99