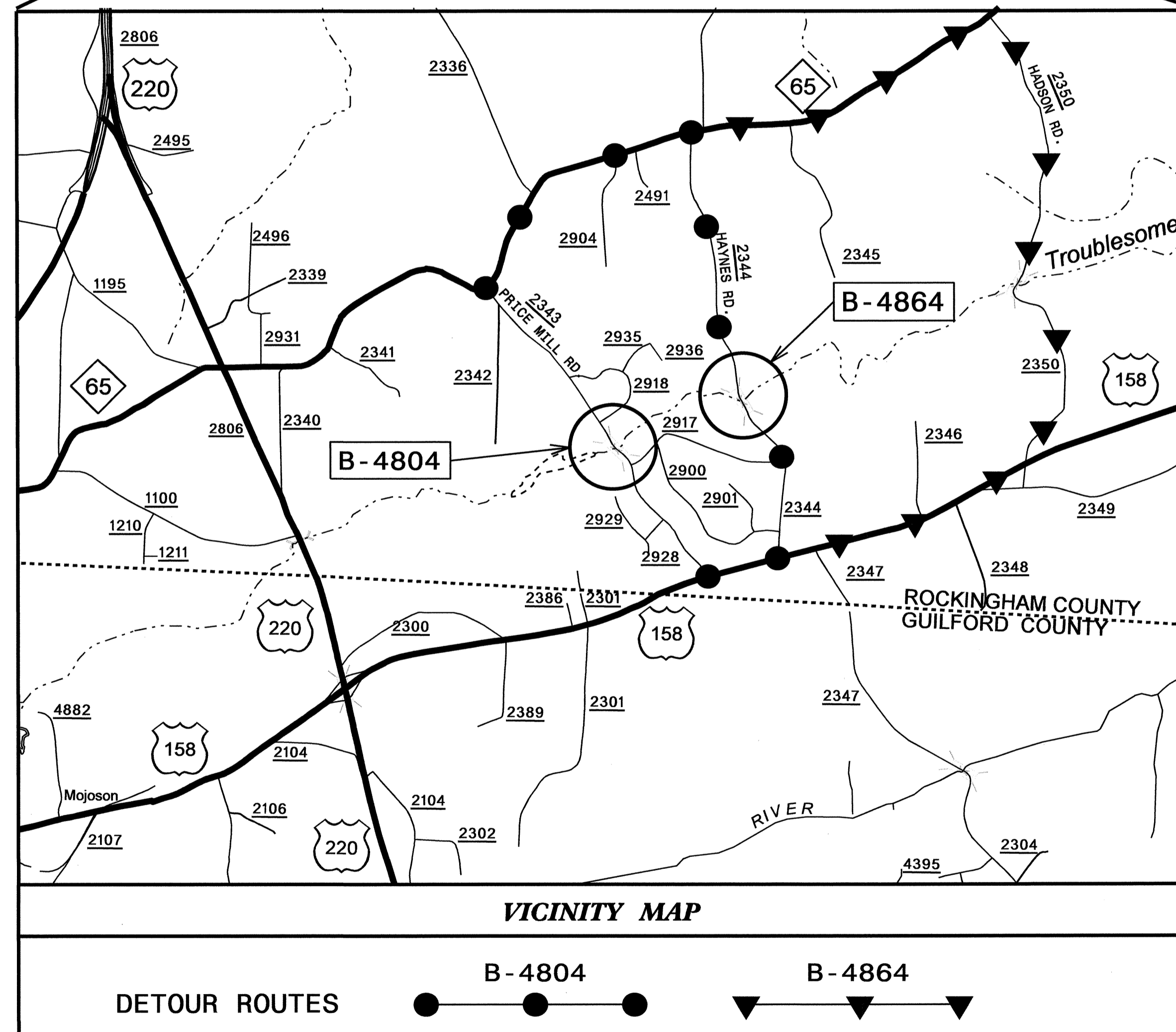
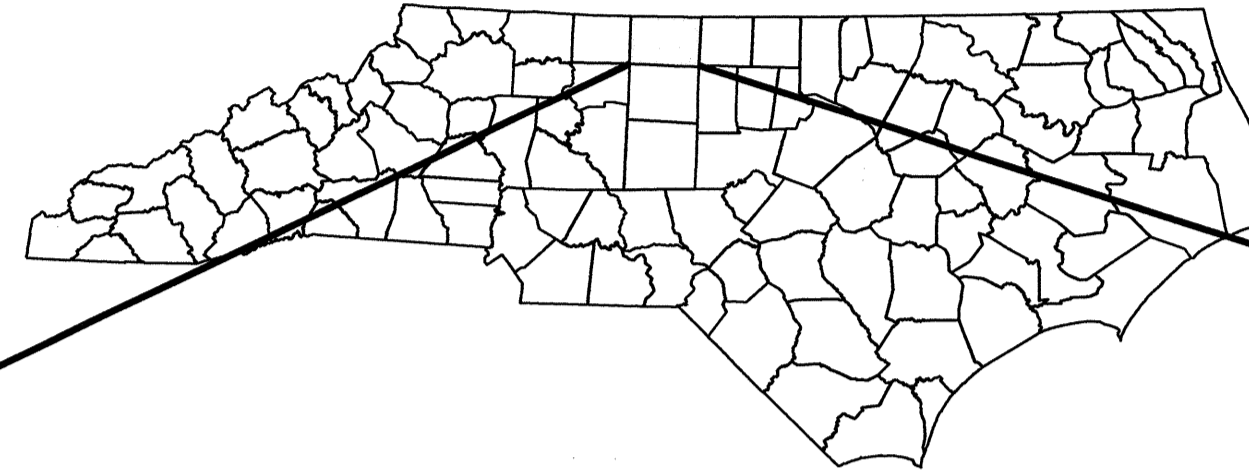


STATE OF NORTH CAROLINA
DIVISION OF HIGHWAYS

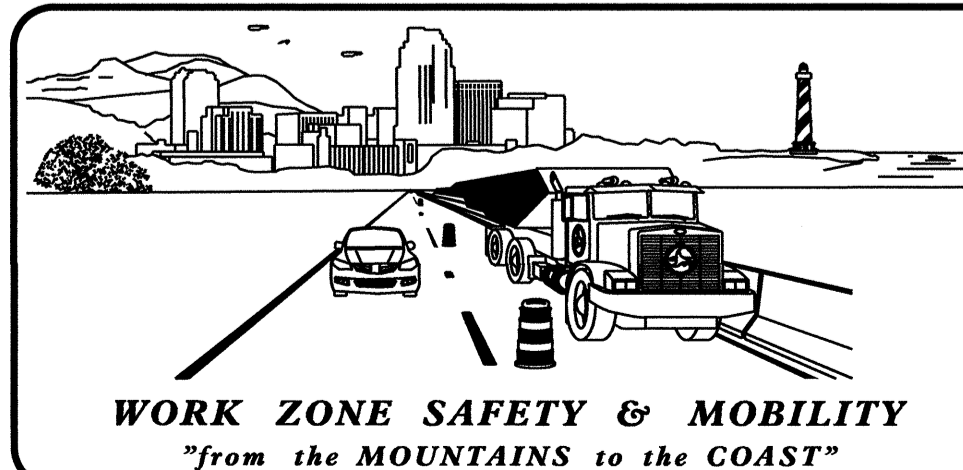
TRANSPORTATION MANAGEMENT PLAN
ROCKINGHAM COUNTY



VICINITY MAP

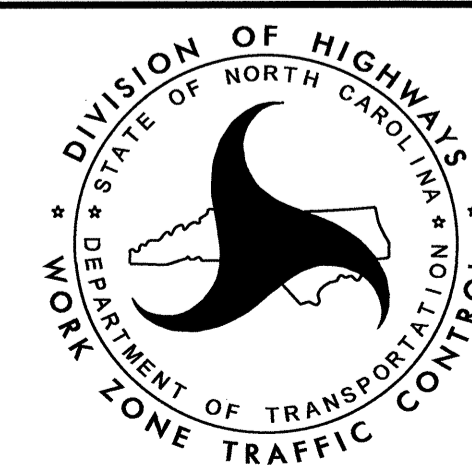
DETOUR ROUTES B-4804 B-4864

22-OCT-2012 07:52 \\DOT\DFSR00701\PROJ\TIP\Projects-B\B4804\TrafficControl\TCP\B-4804_TC_TMP_1.dgn
sdjennings AT E26588

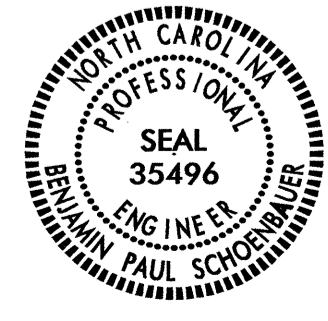


N.C.D.O.T. WORK ZONE TRAFFIC CONTROL
1580 MAIL SERVICE CENTER (MSC) RALEIGH, NC 27699-1580
1020 BIRCH RIDGE DRIVE, RALEIGH, NC 27610 (DELIVERY)
PHONE: (919) 250-4094 FAX: (919) 250-4098

J. S. BOURNE, P.E. STATE TRAFFIC MANAGEMENT ENGINEER
J. ISHAK, P.E. TRAFFIC CONTROL PROJECT ENGINEER
BEN SCHOENBAUER, P.E. TRAFFIC CONTROL PROJECT DESIGN ENGINEER
SPENCER JENNINGS TRAFFIC CONTROL DESIGN ENGINEER



APPROVED: *Ben Schoenbauer*
DATE: *October 29, 2012*



INDEX OF SHEETS

SHEET NO.	TITLE
TMP-1	TITLE SHEET AND INDEX OF SHEETS
TMP-1A	LIST OF APPLICABLE ROADWAY STANDARD DRAWINGS AND LEGEND
TMP-1B	TRANSPORTATION OPERATIONS PLAN: (MANAGEMENT STRATEGIES, GENERAL NOTES AND PHASING)
TMP-2	B-4864 OFF-SITE DETOUR ROUTE AND BARRICADE PLACEMENT
TMP-3	B-4804 OFF-SITE DETOUR ROUTE AND BARRICADE PLACEMENT
SD-1	SPECIAL SIGN DESIGN

SHEET NO.
TMP-1

B-4804 / B-4864

TIP PROJECT:

ROADWAY STANDARD DRAWINGS

THE FOLLOWING ROADWAY STANDARDS AS SHOWN IN "ROADWAY STANDARD DRAWINGS" - PROJECT SERVICES UNIT - N.C. DEPARTMENT OF TRANSPORTATION - RALEIGH, N.C., DATED JANUARY 2012 ARE APPLICABLE TO THIS PROJECT AND BY REFERENCE HEREBY ARE CONSIDERED A PART OF THESE PLANS:

STD. NO.	TITLE
1101.01	WORK ZONE WARNING SIGNS
1101.11	TRAFFIC CONTROL DESIGN TABLES
1101.03	TEMPORARY ROAD CLOSURES
1110.01	STATIONARY WORK ZONE SIGNS
1145.01	BARRICADES

LEGEND

GENERAL

- DIRECTION OF TRAFFIC FLOW
- DIRECTION OF PEDESTRIAN TRAFFIC FLOW
- EXIST. PVMT.
- NORTH ARROW
- PROPOSED PVMT.
- TEMP. SHORING (LOCATION PURPOSES ONLY)

WORK AREA

REMOVAL

USER DEFINED (IF NEEDED)

USER DEFINED (IF NEEDED)

SIGNALS

- EXISTING
- PROPOSED
- TEMPORARY

PAVEMENT MARKINGS

- EXISTING LINES
- TEMPORARY LINES

TRAFFIC CONTROL DEVICES

- BARRICADE (TYPE III)
- CONE
- DRUM
- SKINNY DRUM
- TUBULAR MARKER
- TEMPORARY CRASH CUSHION
- FLASHING ARROW BOARD
- FLAGGER
- LAW ENFORCEMENT
- TRUCK MOUNTED ATTENUATOR (TMA)
- CHANGEABLE MESSAGE SIGN

TEMPORARY SIGNING

- PORTABLE SIGN
- STATIONARY SIGN
- STATIONARY OR PORTABLE SIGN

PAVEMENT MARKERS

- CRYSTAL / CRYSTAL
- CRYSTAL / RED
- YELLOW / YELLOW

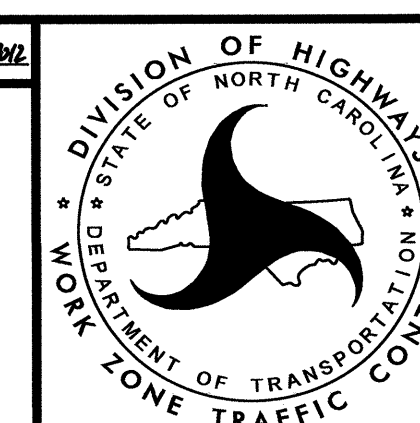
PAVEMENT MARKING SYMBOLS

- PAVEMENT MARKING SYMBOLS

TEMPORARY PAVEMENT MARKING

06-NOV-2012 07:45
 \D01\UF-SR00101\PROJ\TIP\Projects-B\B4804\TrafficControl\TCP\B-4804-TC-TMP-1A.dgn
 saved at 12:26:58B

APPROVED: *Paul Schreiber* DATE: 11/6/12



ROADWAY STANDARD
DRAWINGS & LEGEND

MANAGEMENT STRATEGIES

THE FOLLOWING LISTED STRATEGIES DERIVE FROM DETAILED DESIGN LEVEL ASSESSMENTS OF THE WORK ZONE IMPACTS CONDUCTED DURING THE DEVELOPMENTAL STAGES OF THIS TRANSPORTATION MANAGEMENT PLAN (TMP).

PROJECTS B-4804 AND B-4864 ARE COMBINED. CONTRACTOR SHALL COMPLETE B-4864 BEFORE BEGINNING B-4804. FULL ROAD CLOSURE WITH OFF-SITE DETOURS ARE RECOMMENDED FOR BOTH PROJECTS.

DURING CONSTRUCTION OF B-4864, SR 2344 (HAYNES RD.) TRAFFIC WILL BE DETOURED OFF-SITE VIA US 158 TO SR 2350 (HUDSON RD.) TO NC 65 BACK TO SR 2344.

DURING CONSTRUCTION OF B-4804, SR 2343 (PRICE MILL RD.) TO TRAFFIC WILL BE DETOURED OFF-SITE VIA US 158 TO SR 2350 (HUDSON RD.) TO NC 65 BACK TO SR 2343.

GENERAL NOTES

CHANGES MAY BE REQUIRED WHEN PHYSICAL DIMENSIONS IN THE DETAIL DRAWINGS, STANDARD DETAILS, AND ROADWAY DETAILS ARE NOT ATTAINABLE TO MEET FIELD CONDITIONS OR RESULT IN DUPLICATE OR UNDESIRED OVERLAPPING OF DEVICES. MODIFICATION MAY INCLUDE: MOVING, SUPPLEMENTING, COVERING, OR REMOVAL OF DEVICES AS DIRECTED BY THE ENGINEER.

THE FOLLOWING GENERAL NOTES APPLY AT ALL TIMES FOR THE DURATION OF THE CONSTRUCTION PROJECT EXCEPT WHEN OTHERWISE NOTED IN THE PLAN OR DIRECTED BY THE ENGINEER.

TRAFFIC PATTERN ALTERATIONS

- A) NOTIFY THE ENGINEER THIRTY (30) CALENDAR DAYS PRIOR TO ANY TRAFFIC PATTERN ALTERATION.

SIGNING

- B) PROVIDE SIGNING AND DEVICES REQUIRED TO CLOSE THE ROAD ACCORDING TO THE ROADWAY STANDARD DRAWINGS AND TRAFFIC CONTROL PLANS.

PROVIDE SIGNING REQUIRED FOR THE OFF-SITE DETOUR ROUTE AS SHOWN IN THE TRAFFIC CONTROL PLANS.

- C) COVER OR REMOVE ALL SIGNS AND DEVICES REQUIRED TO CLOSE THE ROAD WHEN ROAD CLOSURE IS NOT IN OPERATION.

COVER OR REMOVE ALL SIGNS REQUIRED FOR THE OFF-SITE DETOUR WHEN THE DETOUR IS NOT IN OPERATION.

- D) ENSURE ALL NECESSARY SIGNING IS IN PLACE PRIOR TO ALTERING ANY TRAFFIC PATTERN.

TRAFFIC CONTROL DEVICES

- E) PLACE TYPE III BARRICADES, WITH "ROAD CLOSED" SIGN R11-2 ATTACHED, OF SUFFICIENT LENGTH TO CLOSE ENTIRE ROADWAY.

PAVEMENT MARKINGS AND MARKERS

- F) INSTALL PAVEMENT MARKINGS AND PAVEMENT MARKERS ON THE FINAL SURFACE AS SHOWN IN THE PAVEMENT MARKING PLAN.
- G) TIE PROPOSED PAVEMENT MARKING LINES TO EXISTING PAVEMENT MARKING LINES.

PHASING

NOTES:

1. PROJECTS B-4804 AND B-4864 ARE COMBINED. CONTRACTOR SHALL COMPLETE B-4864 BEFORE BEGINNING B-4804.
2. MAINTAIN ACCESS TO DRIVEWAYS AT ALL TIMES UNLESS OTHERWISE DIRECTED BY THE ENGINEER.

PHASE I

STEP 1: USING RSD 1101.03, SHEET 1 OF 9 AND SHEETS TMP-2 AND SD-1, INSTALL DETOUR SIGNS. PLACE TYPE III BARRICADES TO CLOSE SR 2344 (HAYES RD.) TO THROUGH TRAFFIC, DETOUR TRAFFIC ONTO PROPOSED DETOUR.

STEP 2: AWAY FROM TRAFFIC, COMPLETE THE FOLLOWING:

- 1) REMOVE EXISTING STRUCTURE NO.13 AND CONSTRUCT PROPOSED STRUCTURE. SEE ROADWAY AND STRUCTURE PLANS.
- 2) CONSTRUCT PROPOSED ROADWAY UP TO AND INCLUDING THE FINAL LAYER OF SURFACE COURSE FROM -L- STA. 13+00 +/- TO -L- STA. 19+00 +/- . SEE ROADWAY PLANS.
- 3) PLACE FINAL PAVEMENT MARKINGS AS DIRECTED BY THE ENGINEER.

STEP 3: REMOVE ALL WORK ZONE TRAFFIC CONTROL DEVICES, ALL ROAD CLOSURE SIGNING, AND ALL DETOUR SIGNING. OPEN SR 2344 (HAYES RD.) TO A TWO-LANE TWO-WAY TRAFFIC PATTERN.

PHASE II

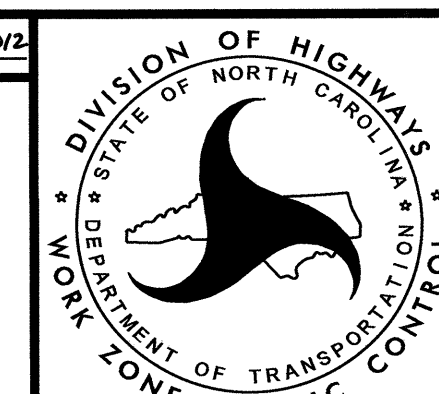
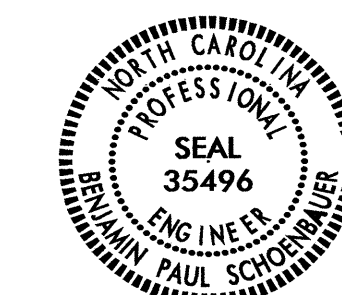
STEP 1: USING RSD 1101.03, SHEET 1 OF 9 AND SHEETS TMP-2 AND SD-1, INSTALL DETOUR SIGNS. PLACE TYPE III BARRICADES TO CLOSE SR 2343 (PRICE MILL RD.) TO THROUGH TRAFFIC, DETOUR TRAFFIC ONTO PROPOSED DETOUR.

STEP 2: AWAY FROM TRAFFIC, COMPLETE THE FOLLOWING:

- 1) REMOVE EXISTING STRUCTURE NO.12 AND CONSTRUCT PROPOSED STRUCTURE. SEE ROADWAY AND STRUCTURE PLANS.
- 2) CONSTRUCT PROPOSED ROADWAY UP TO AND INCLUDING THE FINAL LAYER OF SURFACE COURSE FROM -L- STA. 19+00 +/- TO -L- STA. 26+00 +/- . SEE ROADWAY PLANS.
- 3) PLACE FINAL PAVEMENT MARKINGS AS DIRECTED BY THE ENGINEER.

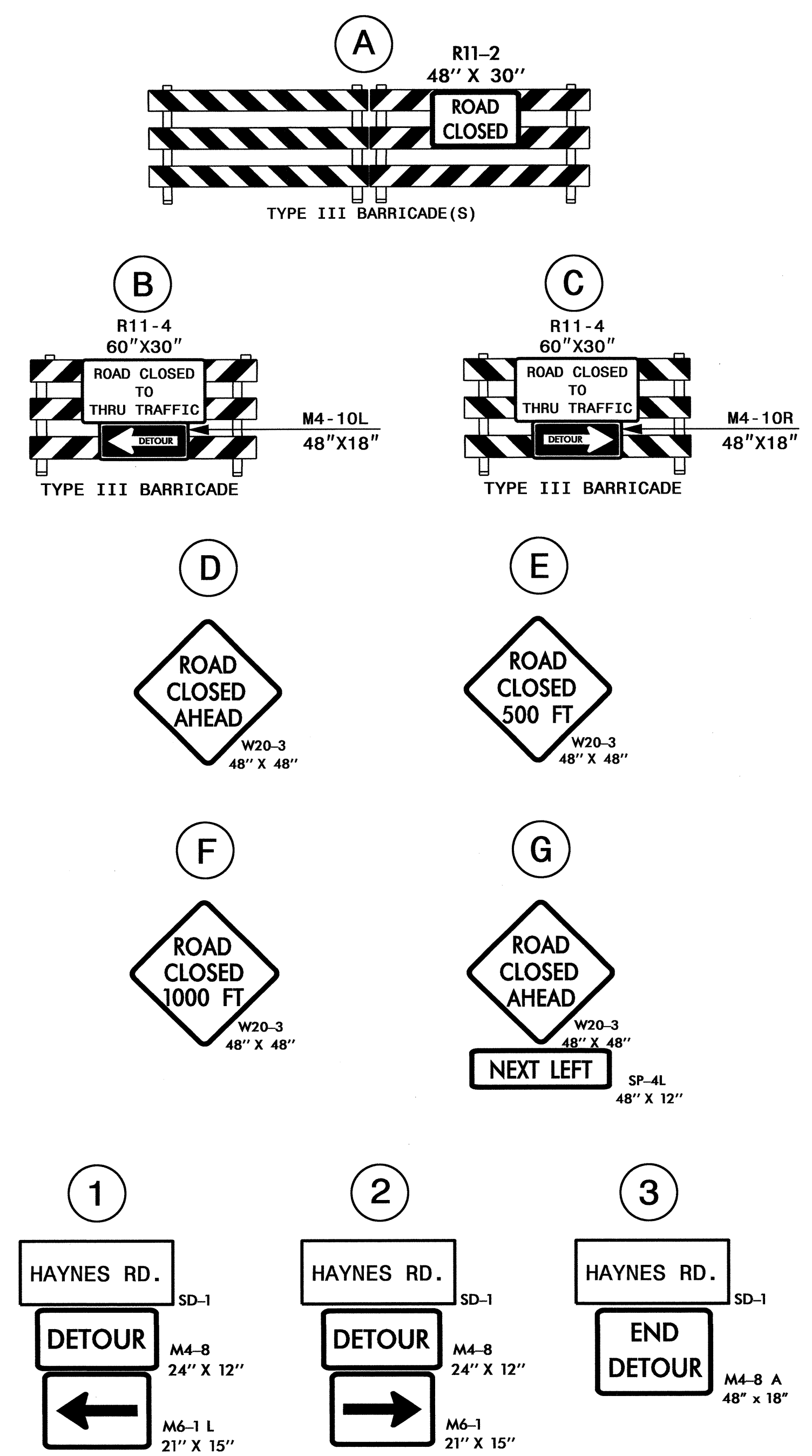
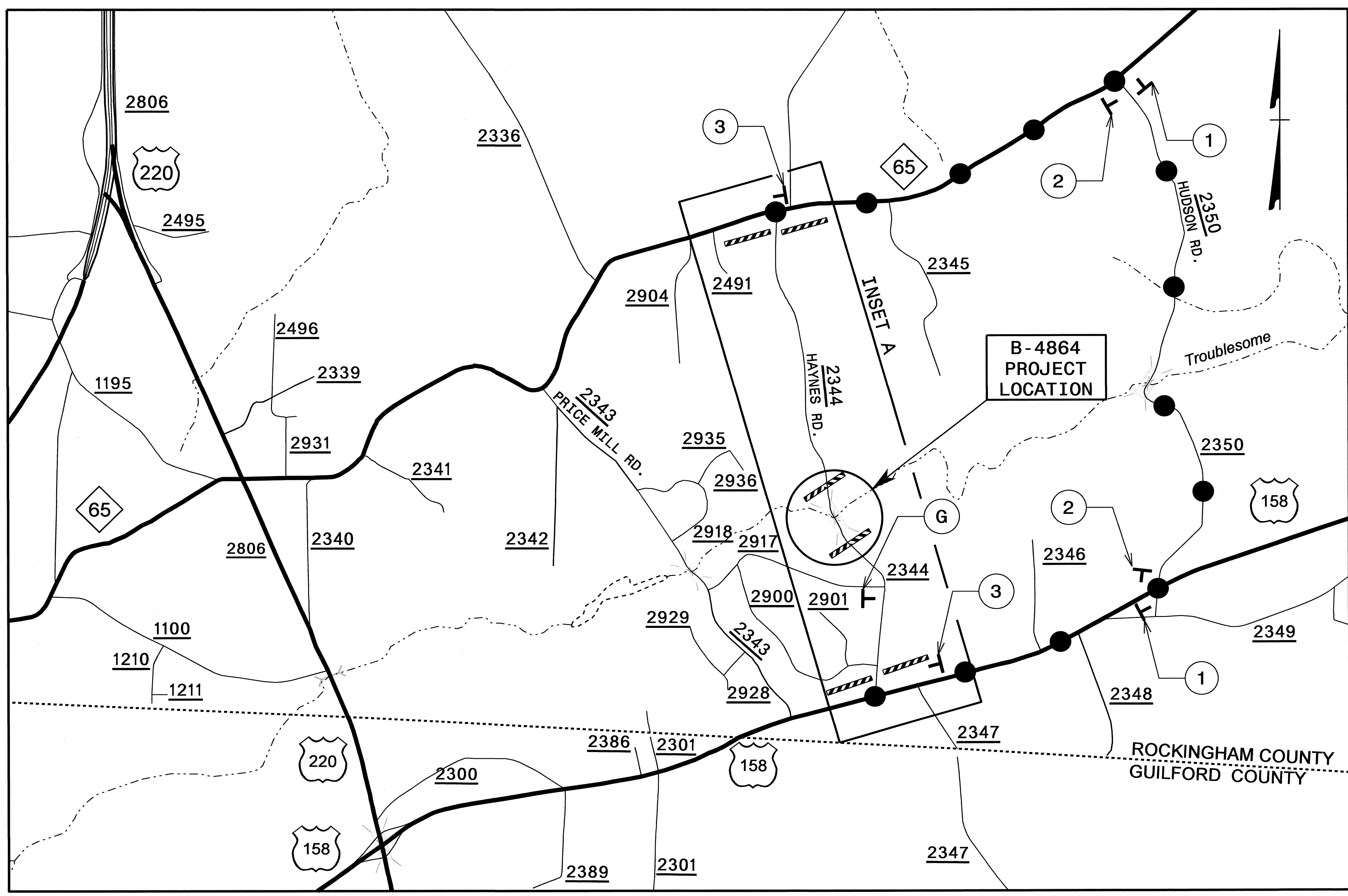
STEP 3: REMOVE ALL WORK ZONE TRAFFIC CONTROL DEVICES, ALL ROAD CLOSURE SIGNING, AND ALL DETOUR SIGNING. OPEN SR 2343 (PRICE MILL RD.) TO A TWO-LANE TWO-WAY TRAFFIC PATTERN.

APPROVED: *Paul Schenck* DATE: 11/6/2012

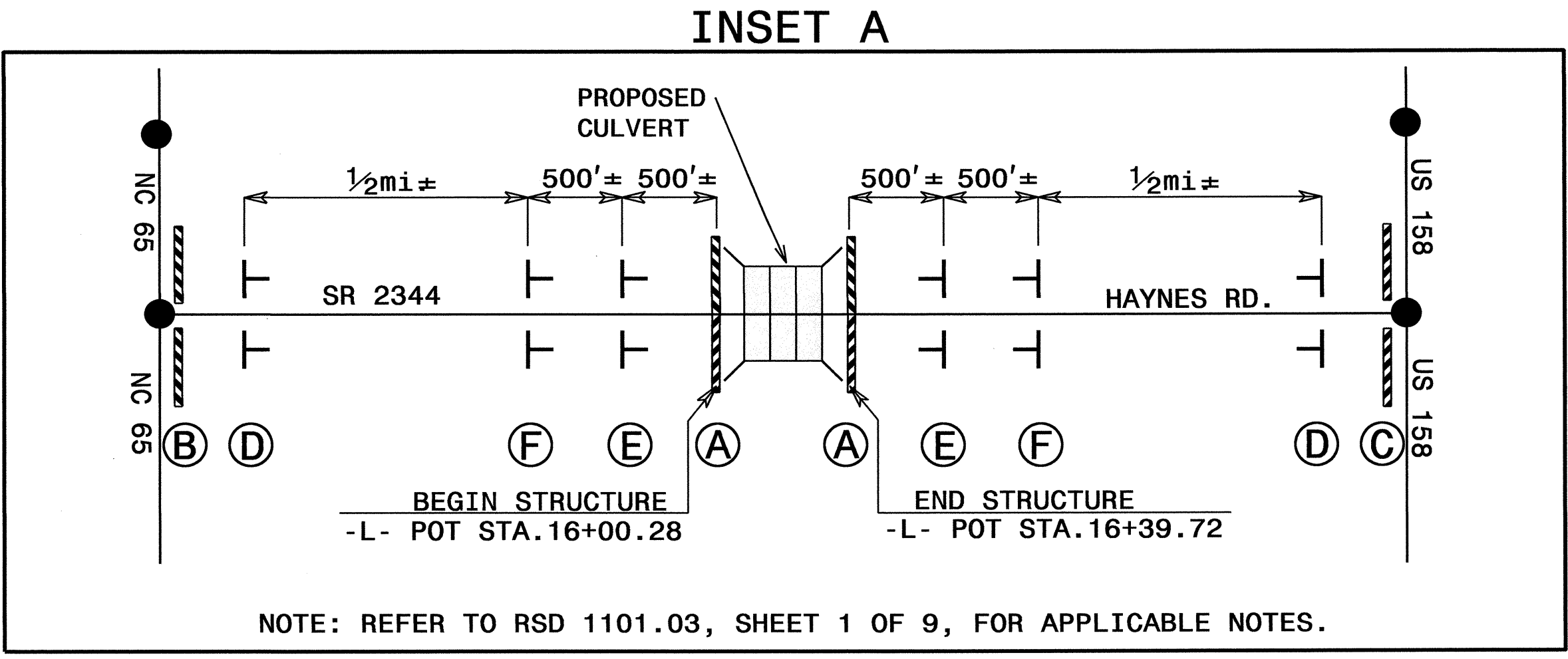


**TRANSPORTATION
OPERATIONS
PLAN**

VICINITY MAP: ROCKINGHAM COUNTY

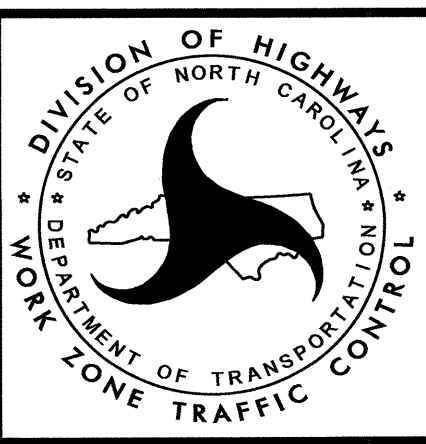


OFF-SITE DETOUR: ●—●—●—●



NOTES:
 1. SEE SHEET SD-1 FOR SPECIAL SIGN DESIGN.
 2. ALL DETOUR SIGN LOCATIONS ARE APPROXIMATE.

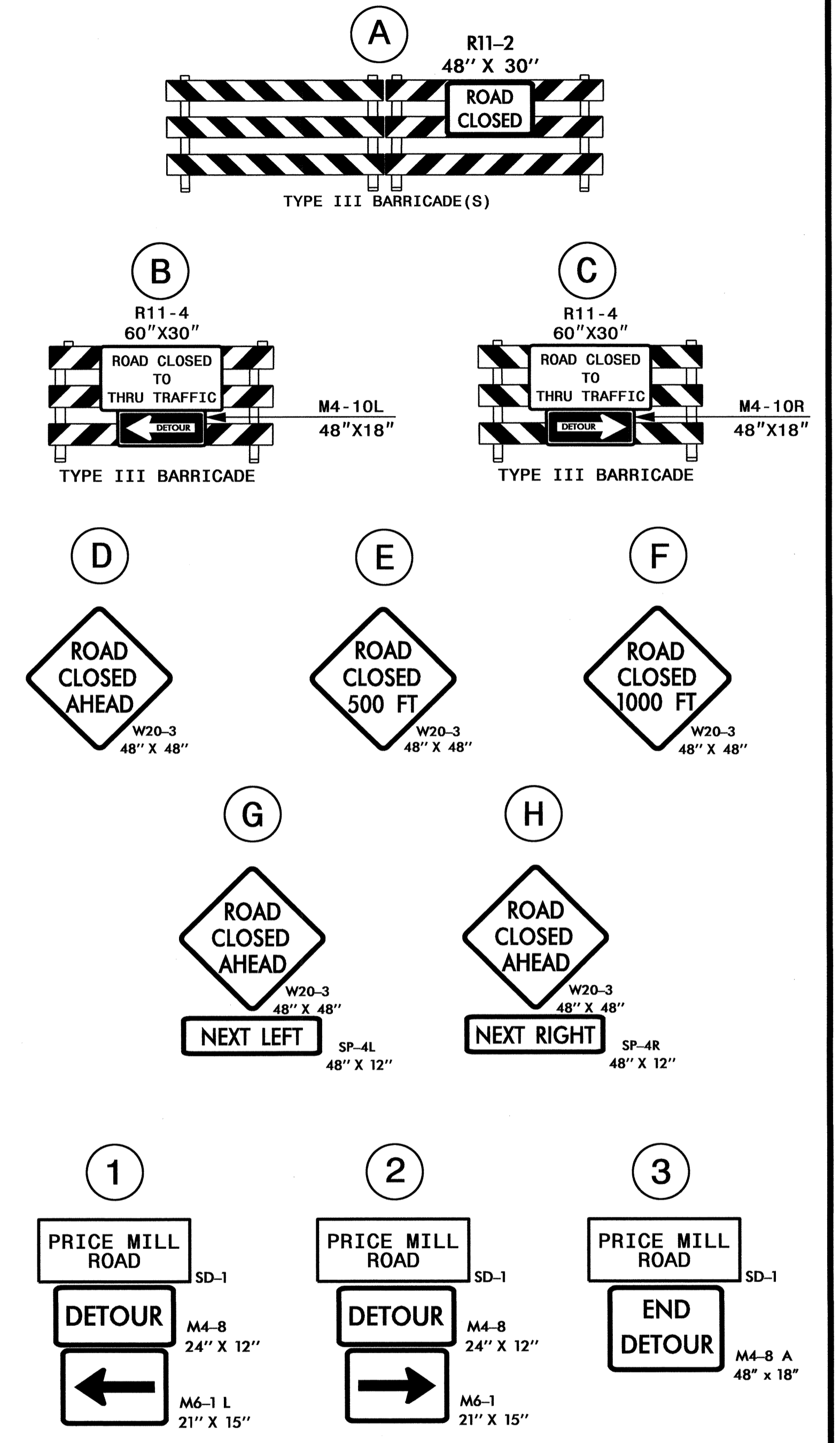
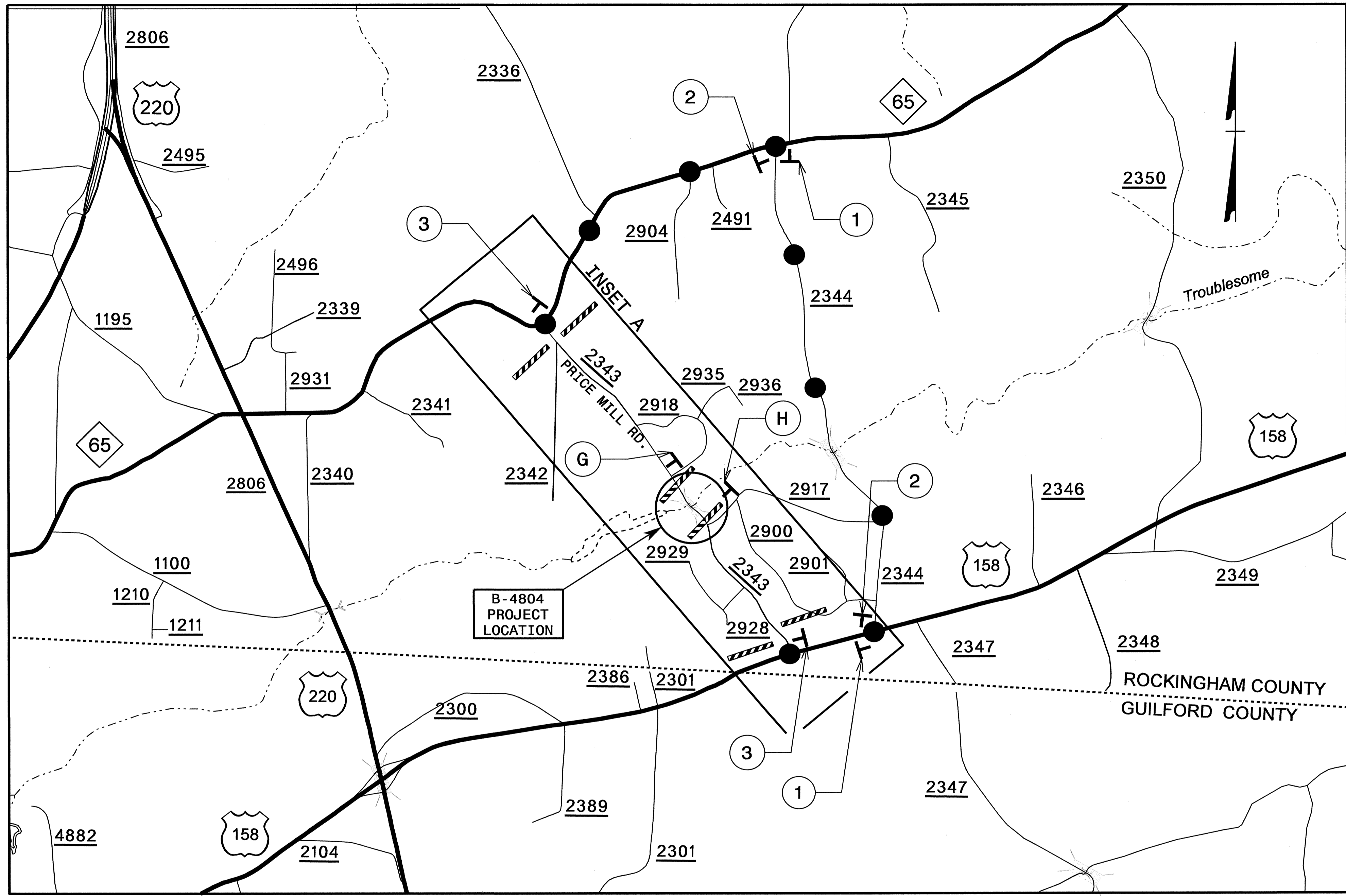
APPROVED: *Paul Schenck* DATE: 10/29/2012
 PROFESSIONAL SEAL 35496
 ENGINEER
 BRUNNEN PAUL SCHENCK



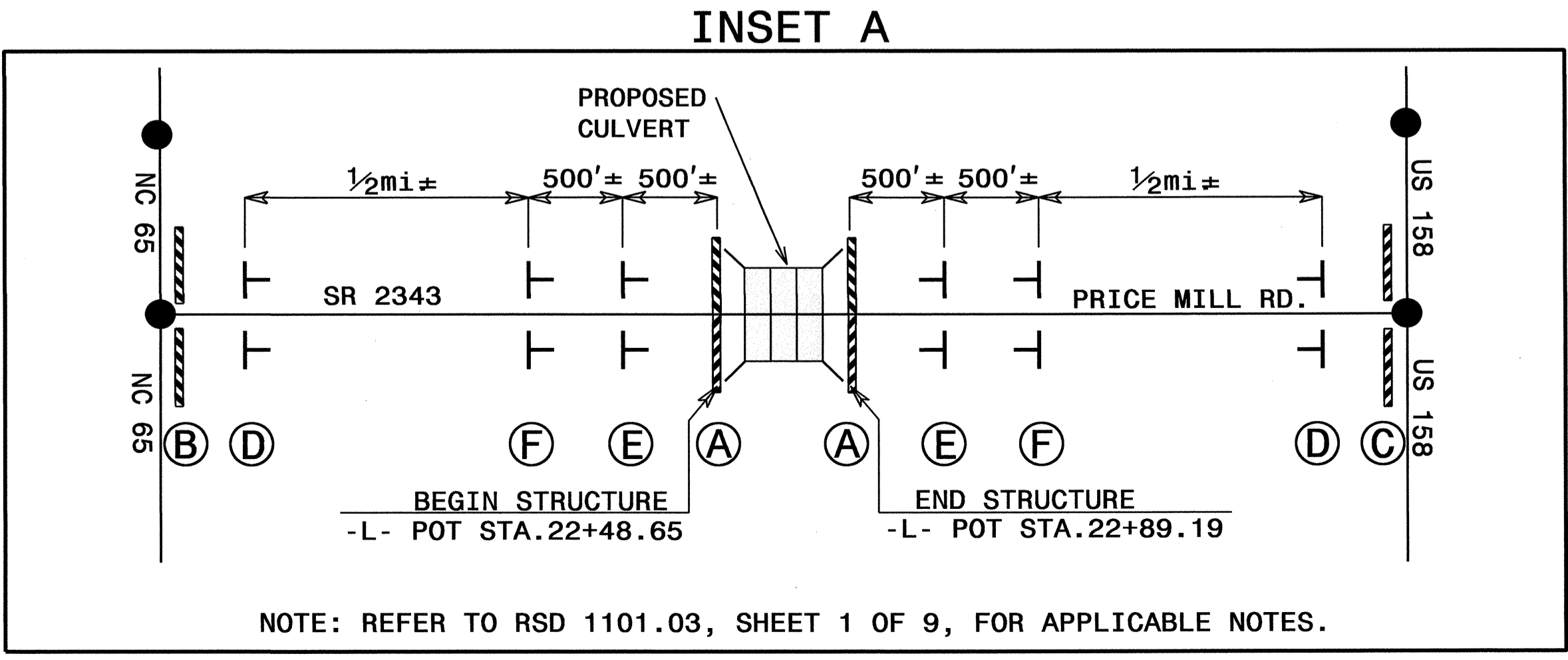
**B-4864 OFF-SITE
 DETOUR ROUTE AND
 BARRICADE PLACEMENT**

22-OCT-2012 07:46
 \\D01\DFSR001\Proj\TipProjects\B\B4804\TrafficControl\TCP\B-4804_TC_TMP_2.dgn
 sdjenings AT 1263818

VICINITY MAP: ROCKINGHAM COUNTY

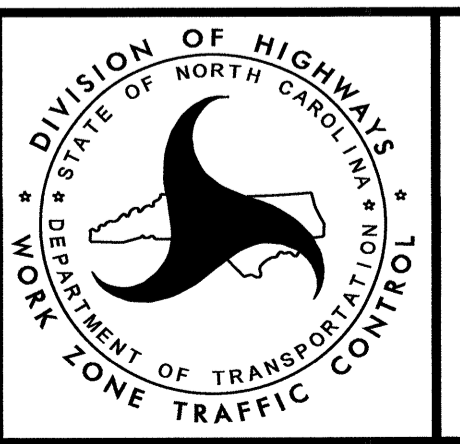


OFF-SITE DETOUR: ●—●—●



NOTES:
 1. SEE SHEET SD-1 FOR SPECIAL SIGN DESIGN.
 2. ALL DETOUR SIGN LOCATIONS ARE APPROXIMATE.

APPROVED: *Ben Schombauer* DATE: 10/29/12



**B-4804 OFF-SITE
 DETOUR ROUTE AND
 BARRICADE PLACEMENT**

22-OCT-2012 07:46
 \\dot\dfs00101\proj\TipProjects\B-4804\TrafficControl\TCP\B-4804_TC_TMP_3.dgn
 sbjennings AT 126388

NOTE: REFER TO RSD 1101.03, SHEET 1 OF 9, FOR APPLICABLE NOTES.