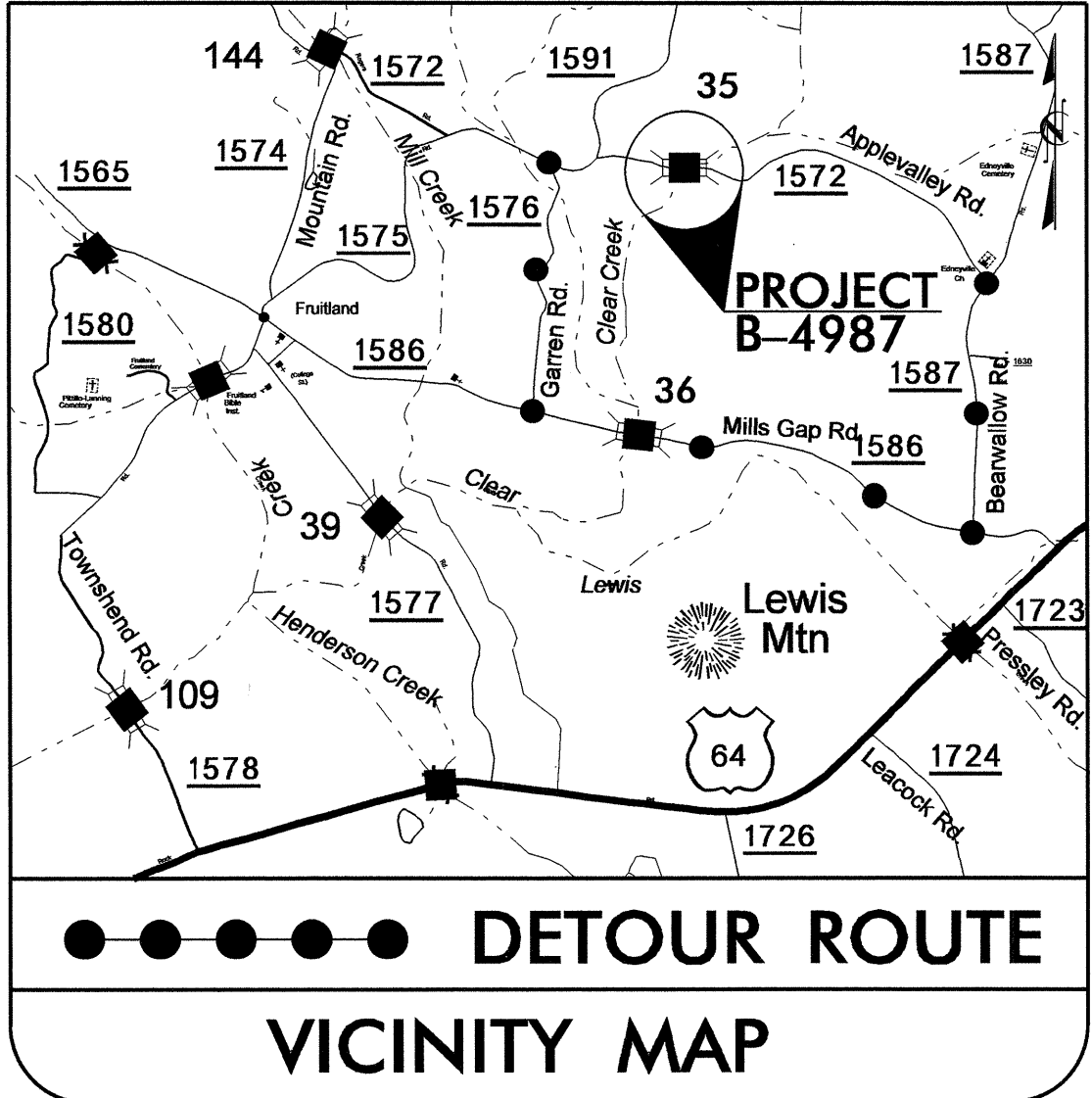
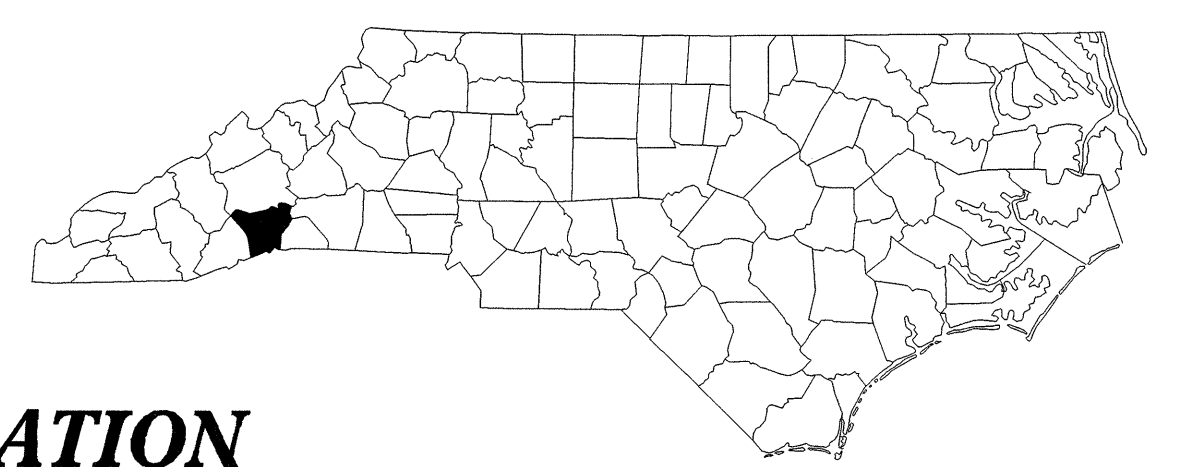


STATE OF NORTH CAROLINA
DIVISION OF HIGHWAYS

**UTILITIES BY OTHERS PLANS
HENDERSON COUNTY**

**LOCATION: BRIDGE NO 35 OVER CLEAR CREEK
ON SR 1572 (APPLE VALLEY RD)**
TYPE OF WORK: POWER AND TELEPHONE UTILITY RELOCATION



TIP PROJECT: B-4987

BEGIN TIP PROJECT B-4987
-L- STA. 10 + 50.00

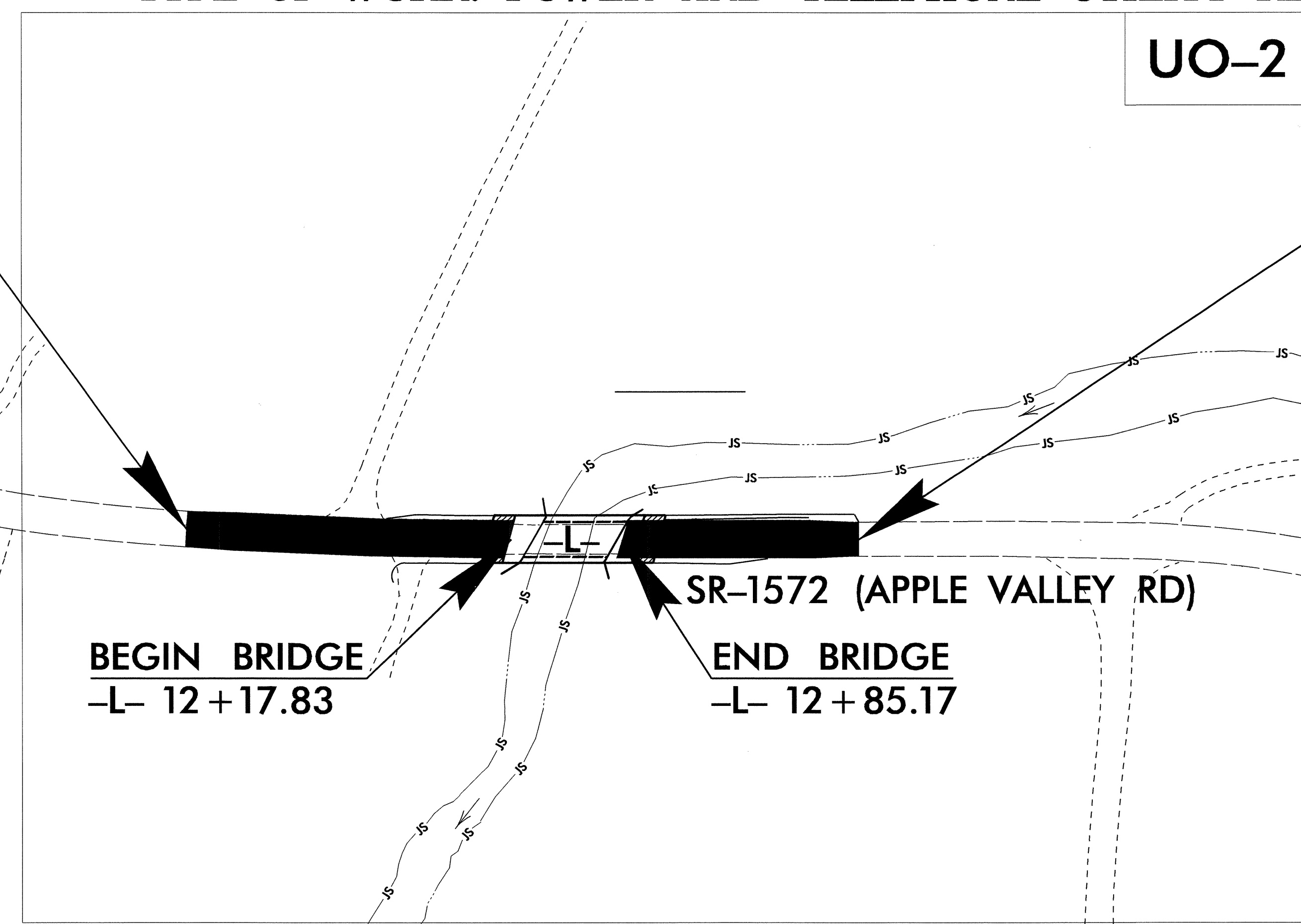
END TIP PROJECT B-4987
-L- STA. 14 + 00.00

TO SR 1573

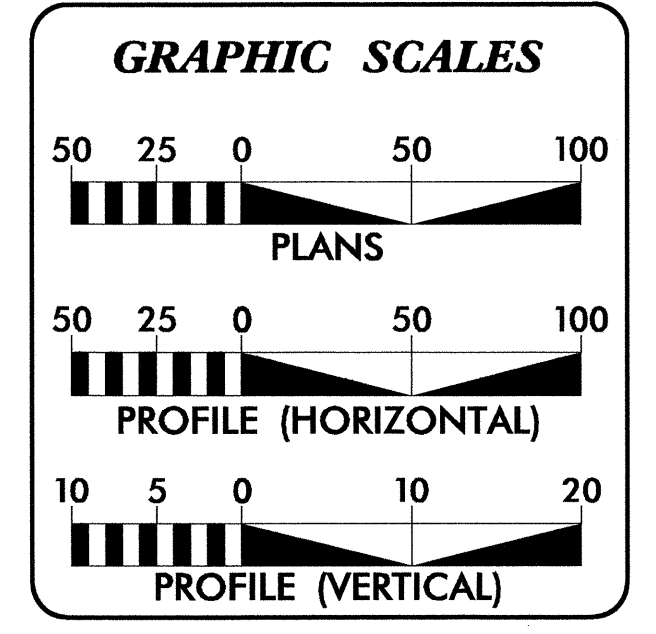
TO US 64

BEGIN BRIDGE
-L- 12 + 17.83

END BRIDGE
-L- 12 + 85.17



THERE IS NO CONTROL OF ACCESS ON THIS PROJECT.
THIS PROJECT IS NOT WITHIN ANY MUNICIPAL BOUNDARIES.
CLEARING ON THIS PROJECT SHALL BE PERFORMED TO THE LIMITS ESTABLISHED BY METHOD
SUB-REGIONAL TIER DESIGN GUIDELINES WERE USED FOR THIS PROJECT.



INDEX OF SHEETS

SHEET NO.	DESCRIPTION
UO-1	TITLE SHEET
UO-2	UTILITIES BY OTHERS PLAN SHEET

UTILITY OWNERS ON PROJECT

- TELEPHONE - AT&T
- POWER - DUKE ENERGY

PREPARED IN THE OFFICE OF:
**DIVISION OF HIGHWAYS
UTILITIES UNIT
UTILITIES ENGINEERING**

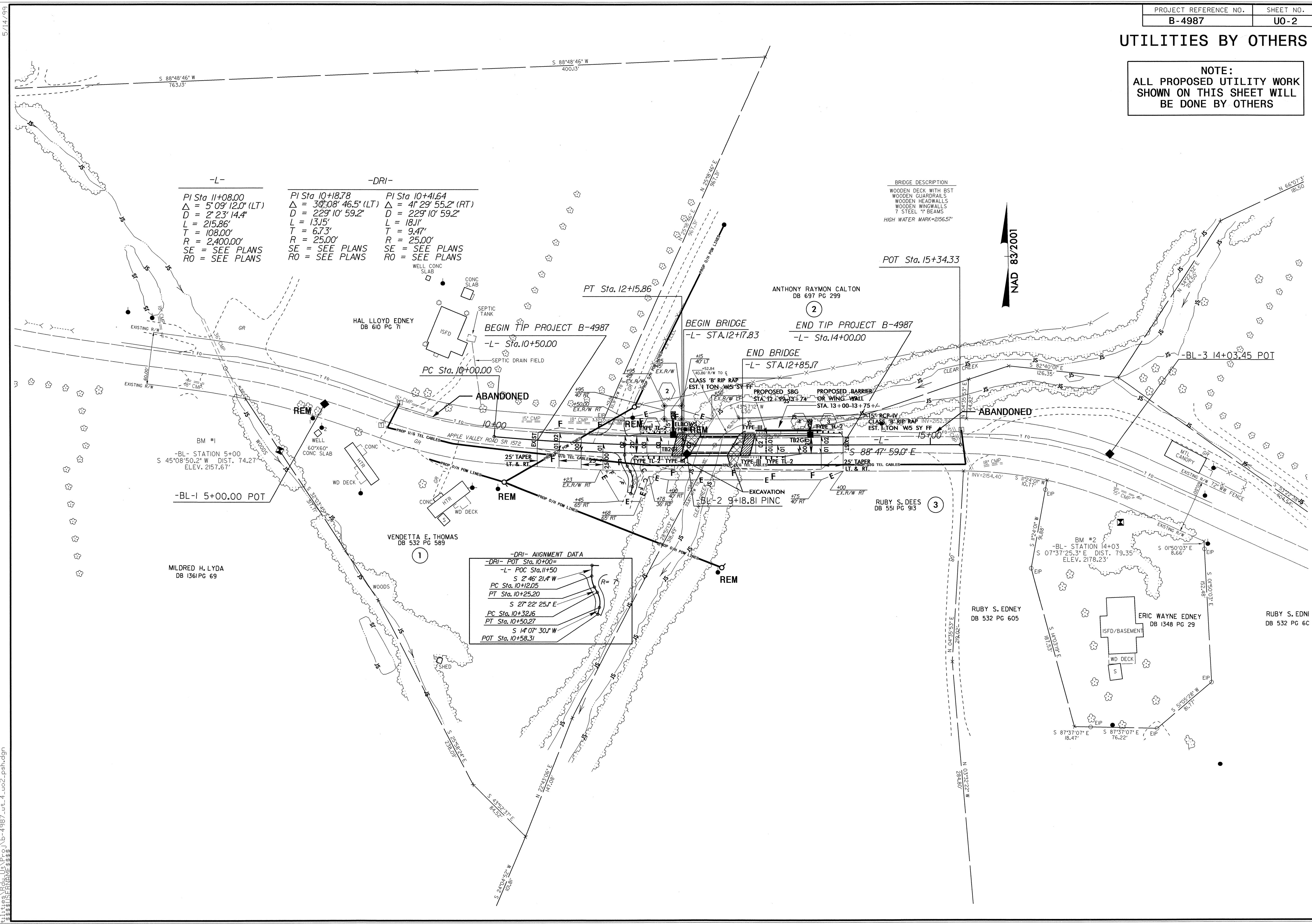
1555 MAIL SERVICES CENTER
RALEIGH, NC 27699-1555
PHONE (919) 707-6690
FAX (919) 250-4151

Roger Worthington, P.E. UTILITIES SECTION ENGINEER
Carl A. Barclay, P.E. UTILITIES SQUAD LEADER PROJECT ENGINEER
James E. Swinson UTILITIES PROJECT DESIGNER

06-NOV-2012 14:59 R:\Utilities\Proj\B-4987\ut_title_uol_psh.dgn

UTILITIES BY OTHERS

NOTE:
ALL PROPOSED UTILITY WORK
SHOWN ON THIS SHEET WILL
BE DONE BY OTHERS



-L-	-DRI-	-DRI-
PI Sta 11+08.00	PI Sta 10+18.78	PI Sta 10+41.64
$\Delta = 5' 09'' 12.0''$ (LT)	$\Delta = 30' 08'' 46.5''$ (LT)	$\Delta = 41' 29'' 55.2''$ (RT)
D = 2' 23' 14.4"	D = 229' 10' 59.2"	D = 229' 10' 59.2"
L = 215.86'	L = 13.15'	L = 18.11'
T = 108.00'	T = 6.73'	T = 9.47'
R = 2,400.00'	R = 25.00'	R = 25.00'
SE = SEE PLANS	SE = SEE PLANS	SE = SEE PLANS
RO = SEE PLANS	RO = SEE PLANS	RO = SEE PLANS

BRIDGE DESCRIPTION
WOODEN DECK WITH BST
WOODEN GUARDRAILS
WOODEN HEADWALLS
WOODEN WINGWALLS
7 STEEL "I" BEAMS
HIGH WATER MARK=2156.57'

-DRI- ALIGNMENT DATA

-DRI- POT Sta. 10+00=	
-L- POC Sta. 11+50=	
	S 2° 46' 21.4" W
PC Sta. 10+12.05	
	S 27° 22' 25.1" E
PT Sta. 10+25.20	
	S 14° 07' 30.1" W
PC Sta. 10+32.16	
PT Sta. 10+50.27	
POT Sta. 10+58.31	

5/14/99
06-NOV-2012 16:02
R:\Utilities\ghd\UnPro\Nb-4987_ut_4_uo2.psh.dgn