

09/08/99

TIP PROJECT: B-4122

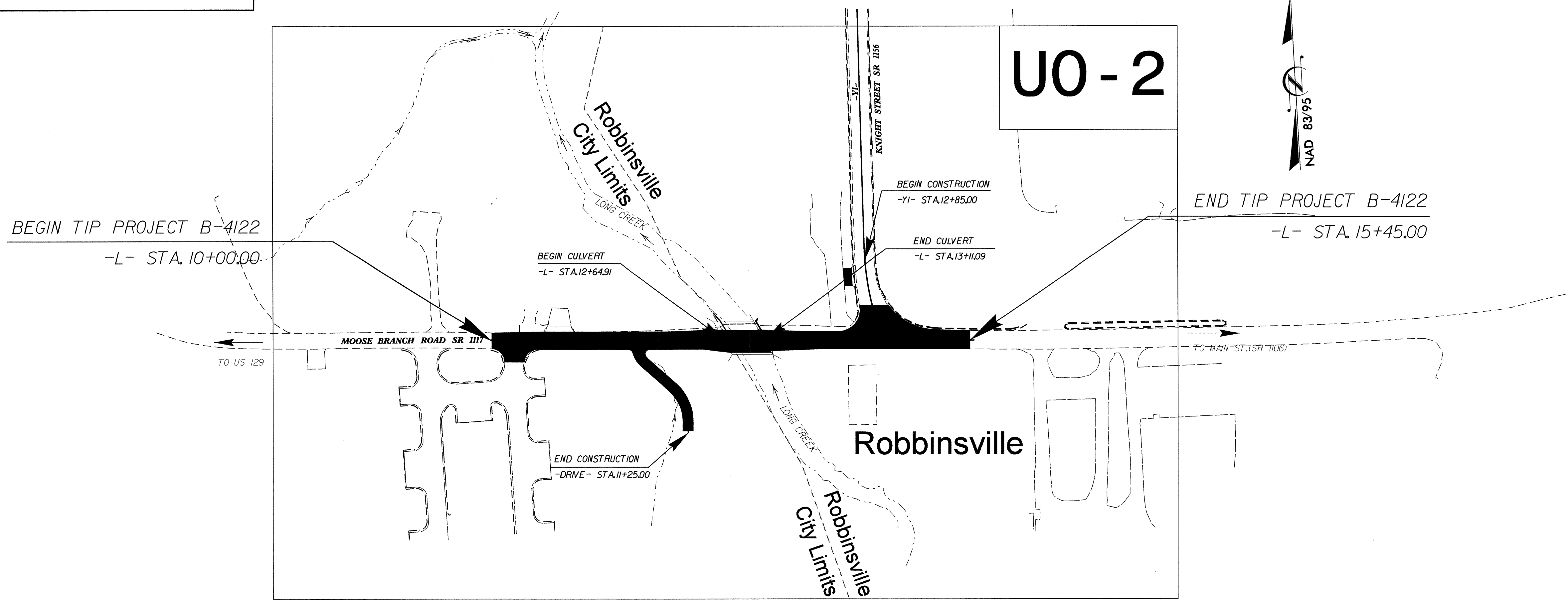
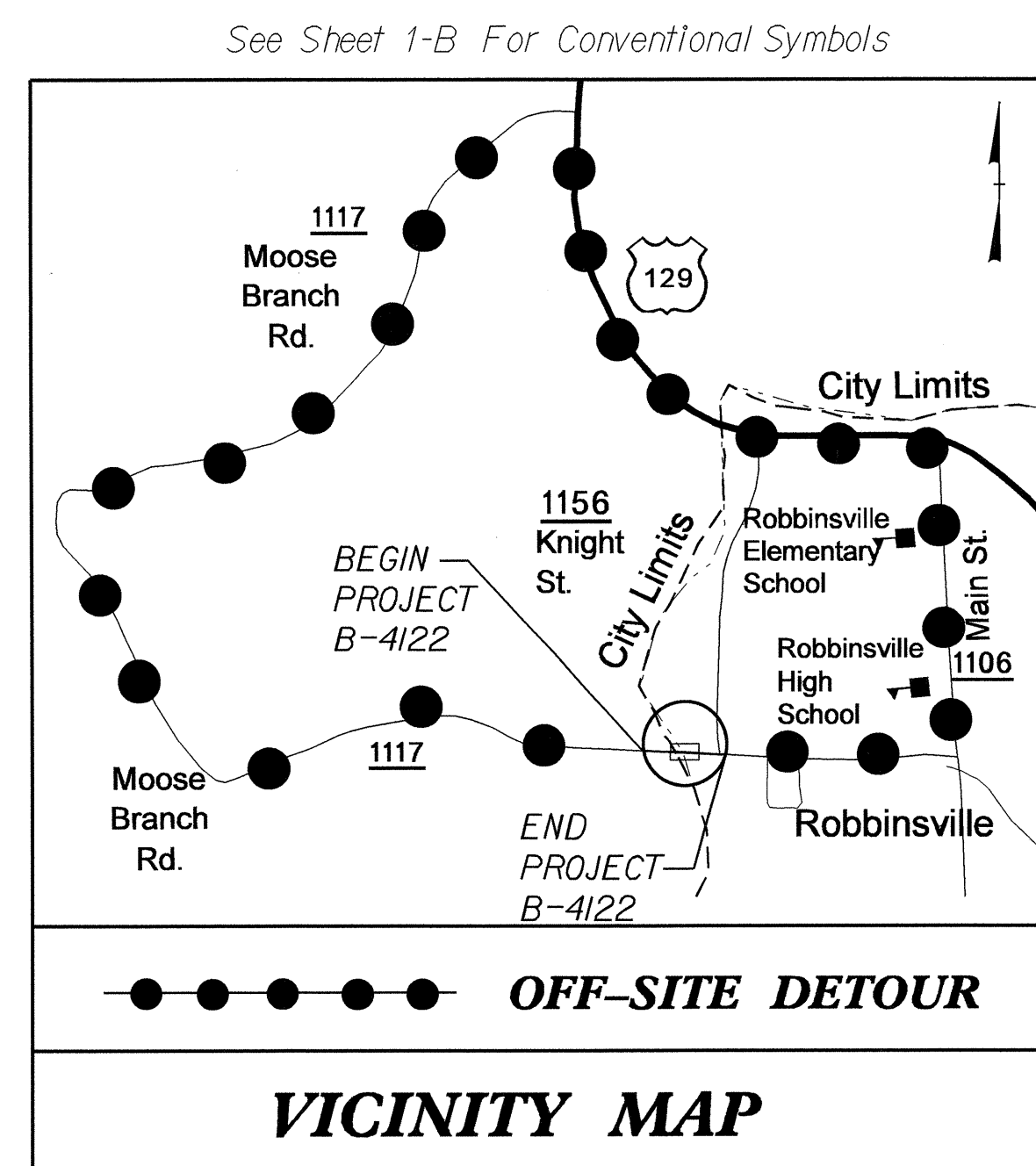
T.I.P. NO.	SHEET NO.
B-4122	UO-1

STATE OF NORTH CAROLINA
DIVISION OF HIGHWAYS

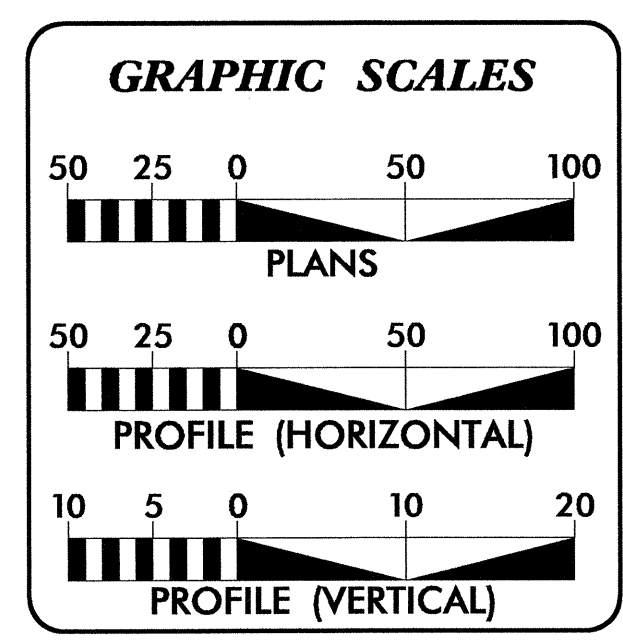
**UTILITIES BY OTHERS PLANS
GRAHAM COUNTY**

LOCATION: BRIDGE NO. 81 OVER LONG CREEK ON SR 1117

TYPE OF WORK: WATER, POWER, TELEPHONE, & CABLE



20-SEP-2012 10:59
R:\Utilities\RDY_UH\Proj\B-4122_UH_Title_U01.psh.dgn
\$\$\$\$\$USERNAME\$\$\$\$\$



INDEX OF SHEETS

SHEET NO.	DESCRIPTION
UO-1	TITLE SHEET
UO-2	UTILITY BY OTHERS PLAN SHEETS

UTILITY OWNERS ON PROJECT

(1)	POWER: DUKE ENERGY
(2)	WATER: TOWN OF ROBBINSVILLE
(3)	SEWER: TOWN OF ROBBINSVILLE
(3)	CABLE: ZITO MEDIA INC.
(4)	TELEPHONE: FRONTIER COMMUNICATION

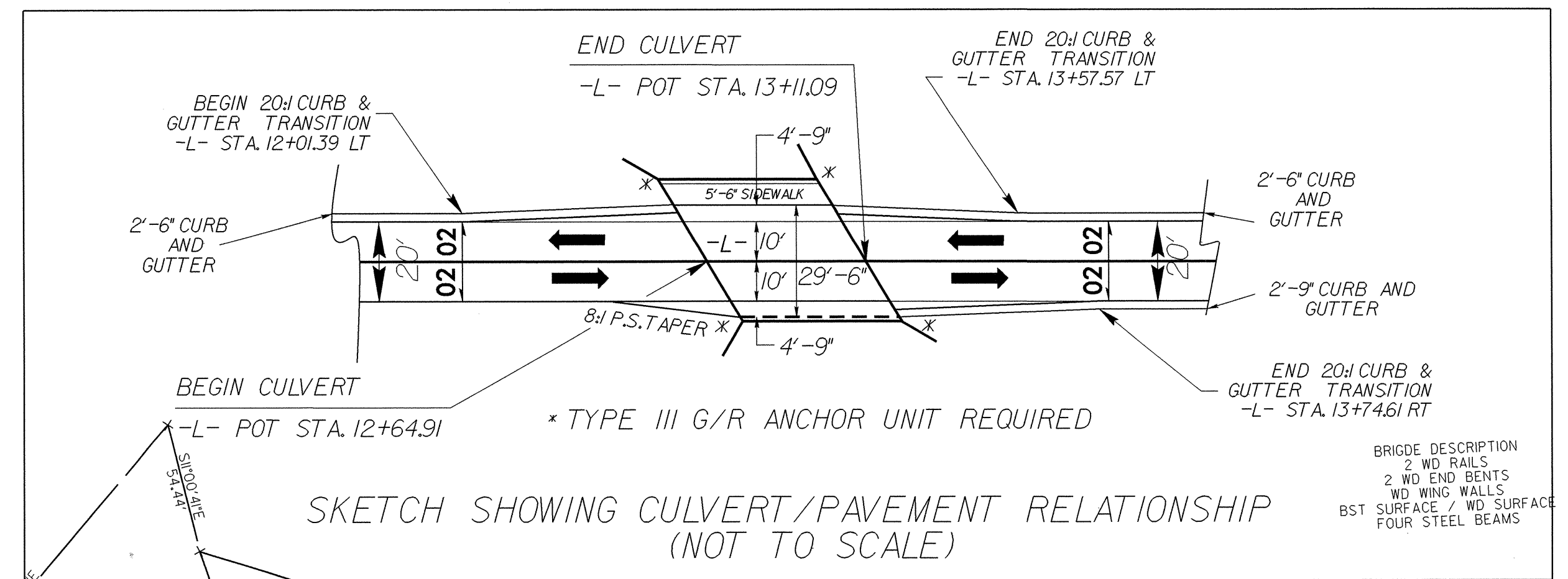
PREPARED IN THE OFFICE OF:
**DIVISION OF HIGHWAYS
UTILITIES UNIT
UTILITIES ENGINEERING**

1591 MAIL SERVICES CENTER
RALEIGH, NC 27699-1591
PHONE (919) 767-6690
FAX (919) 250-4151

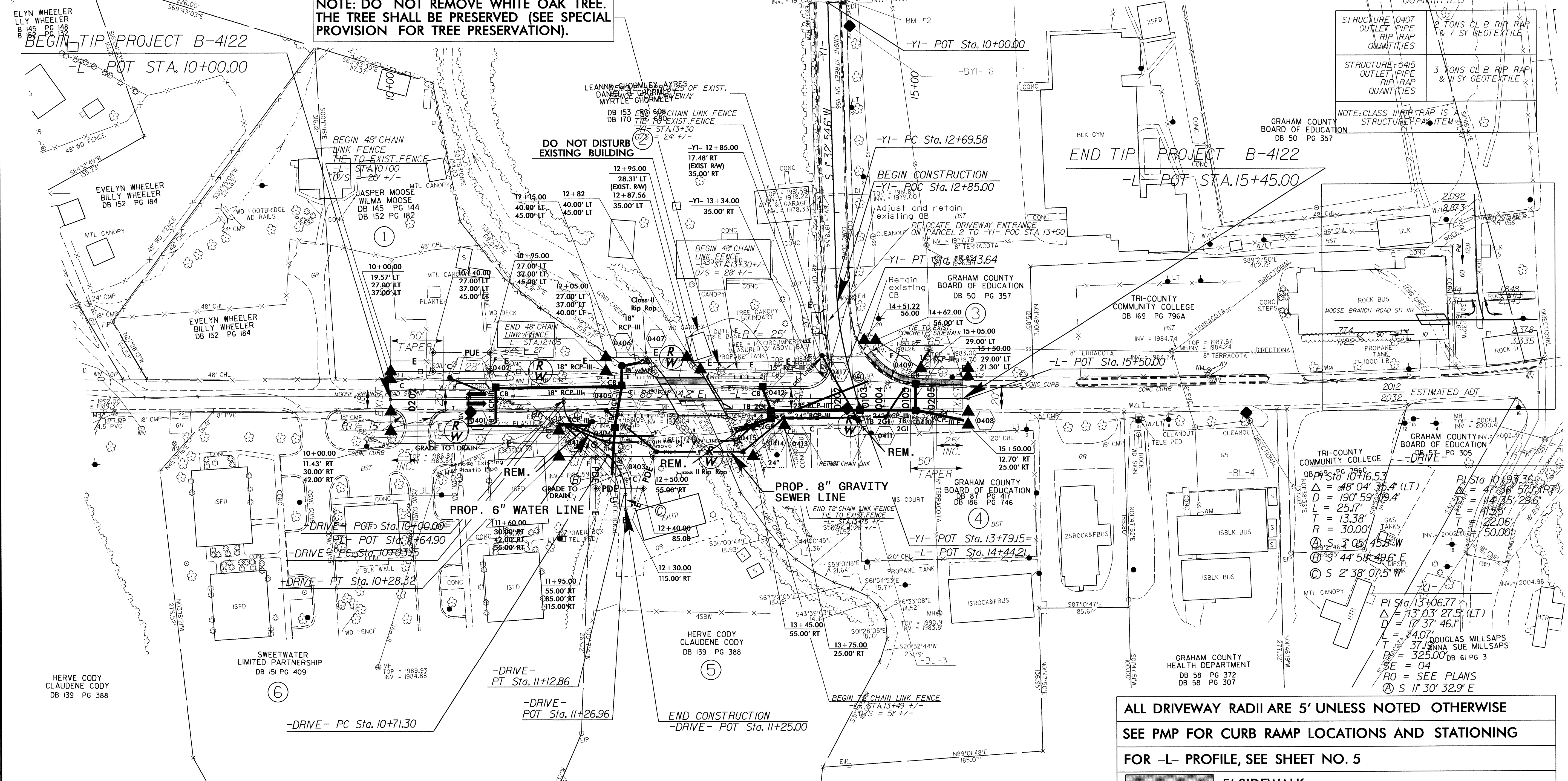
Roger Worthington, P.E. UTILITIES SECTION ENGINEER
Carl Barclay, P.E. UTILITIES SQUAD LEADER PROJECT ENGINEER
Ali Kouchehi, P.E. UTILITIES PROJECT DESIGNER

UTILITIES BY OTHERS

NOTE:
ALL PROPOSED UTILITY WORK SHOWN ON THIS SHEET WILL BE DONE BY OTHERS



NOTE: DO NOT REMOVE WHITE OAK TREE. THE TREE SHALL BE PRESERVED (SEE SPECIAL PROVISION FOR TREE PRESERVATION).



RIP-RAP AND GEOTEXTILE QUANTITIES

STRUCTURE 0407 OUTLET PIPE RIP RAP QUANTITIES	2 TONS CL B RIP RAP & 7 SY GEOTEXTILE
STRUCTURE 0415 OUTLET PIPE RIP RAP QUANTITIES	3 TONS CL B RIP RAP & 11 SY GEOTEXTILE

NOTE: CLASS IN RIP TRAP IS STRUCTURE PAY ITEM

TRI-COUNTY COMMUNITY COLLEGE

DB 169 PG 796A	PI Sta 10+93.36
$\Delta = 48' 04" 35.4" (LT)$	$\Delta = 47' 36" 57.1" (RT)$
$D = 190' 59" 09.4"$	$D = 144' 35" 28.6"$
$L = 25.17'$	$L = 41.35'$
$T = 13.38'$	$T = 22.06'$
$R = 30.00'$	$R = 50.00'$
$\odot S = 3' 05" 45.8" W$	
$\odot S = 4' 58" 49.6" E$	
$\odot S = 2' 38" 07.5" W$	

GRAHAM COUNTY BOARD OF EDUCATION

DB 58 PG 372	PI Sta 13+06.77
DB 58 PG 307	$\Delta = 13' 03" 27.5" (LT)$
	$\Delta = 17' 37" 46.1" (RT)$
	$L = 74.07'$
	$T = 37.19'$
	$R = 325.00'$ DB 61 PG 3
	$SE = 04$
	$RO = SEE PLANS$
	$\odot S = 11' 30" 32.9" E$

ALL DRIVEWAY RADII ARE 5' UNLESS NOTED OTHERWISE
SEE PMP FOR CURB RAMP LOCATIONS AND STATIONING
FOR -L- PROFILE, SEE SHEET NO. 5
5' SIDEWALK
FOR CULVERT PLANS, SEE SHEET NO. C-1 THRU C-12

NOTE: USE GRAU 350 TL-2 ANCHOR UNITS PER SUB REGIONAL TIER DESIGN GUIDELINES FOR GUARDRAIL

NOTE: THE CONC. SIDEWALK LOCATED ON THE CULVERT IS A STRUCTURE PAY ITEM.

REVISIONS

17-JAN-2013 15:41
R:\Utilities\Road\U0-2\Proj\B-4122-rdy-pah.dgn