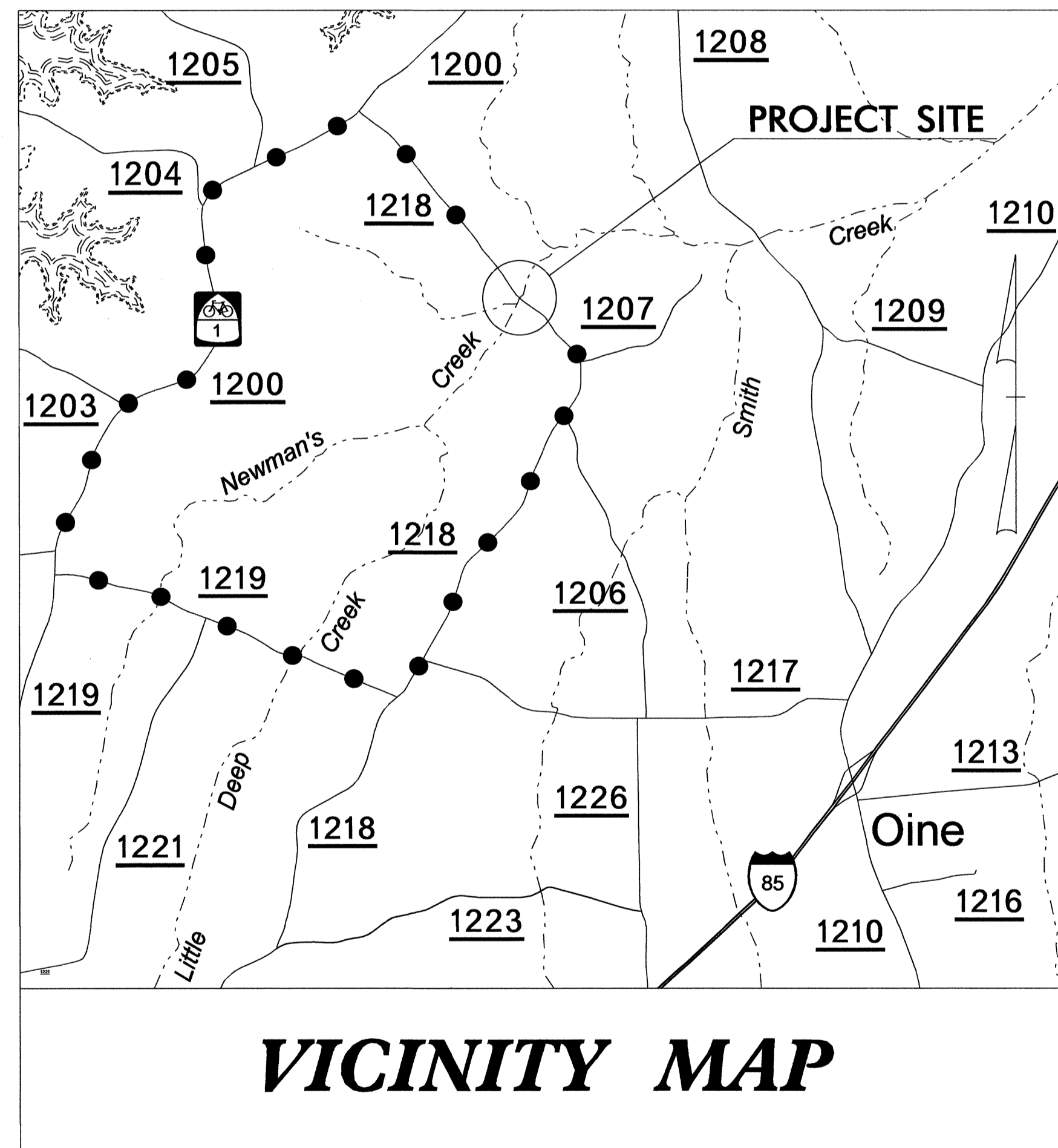
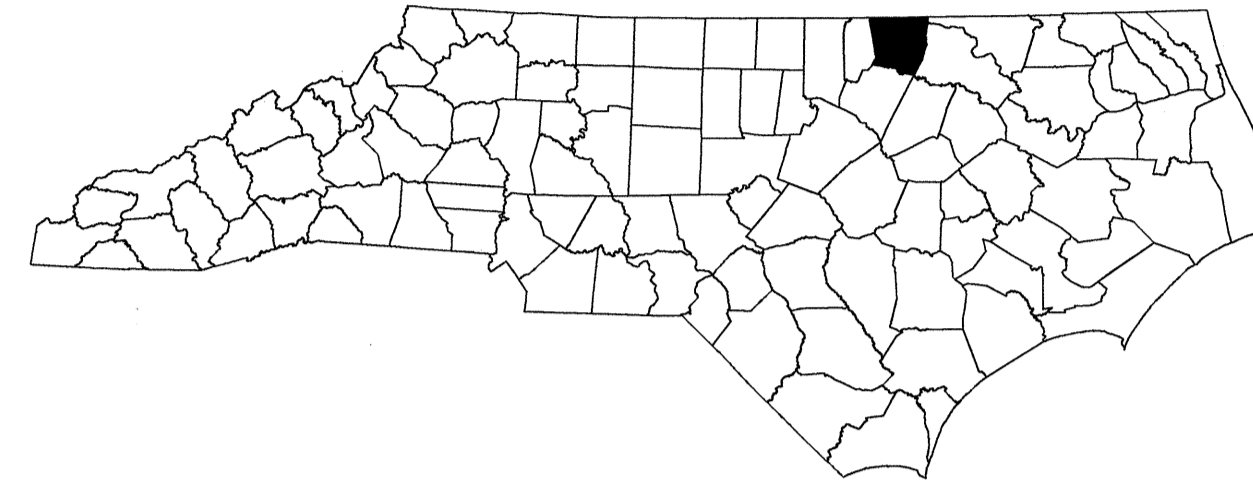


STATE OF NORTH CAROLINA
DIVISION OF HIGHWAYS

TRANSPORTATION MANAGEMENT PLAN

WARREN COUNTY



INDEX OF SHEETS

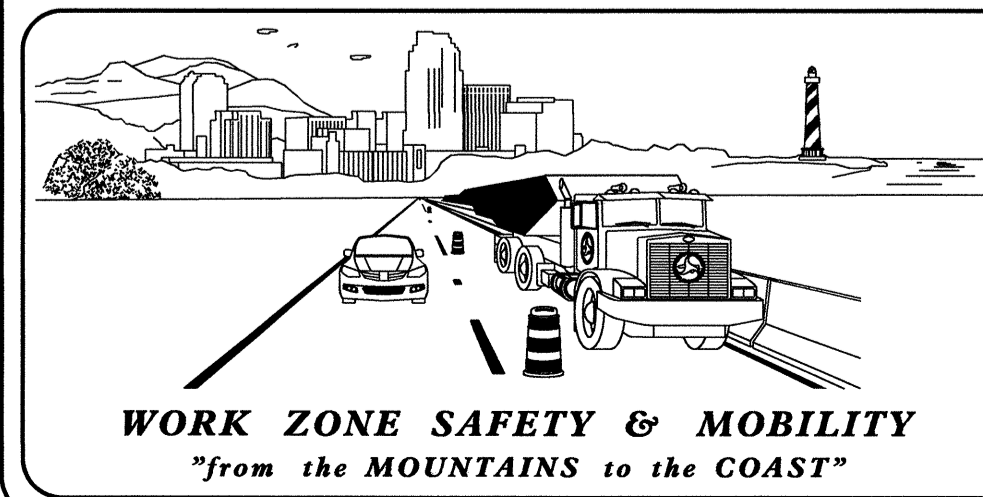
SHEET NO.	TITLE
TMP-1	TITLE SHEET AND INDEX OF SHEETS
TMP-1A	LIST OF APPLICABLE ROADWAY STANDARD DRAWINGS, LEGEND, AND TEMPORARY PAVEMENT MARKING
TMP-1B	TRANSPORTATION OPERATIONS PLAN: (MANAGEMENT STRATEGIES, PHASING, AND GENERAL NOTES)
TMP-2	OFF-SITE DETOUR ROUTE AND BARRICADE PLACEMENT
SD-1	SPECIAL SIGN DESIGN

SHEET NO.
TMP-1

B-4834

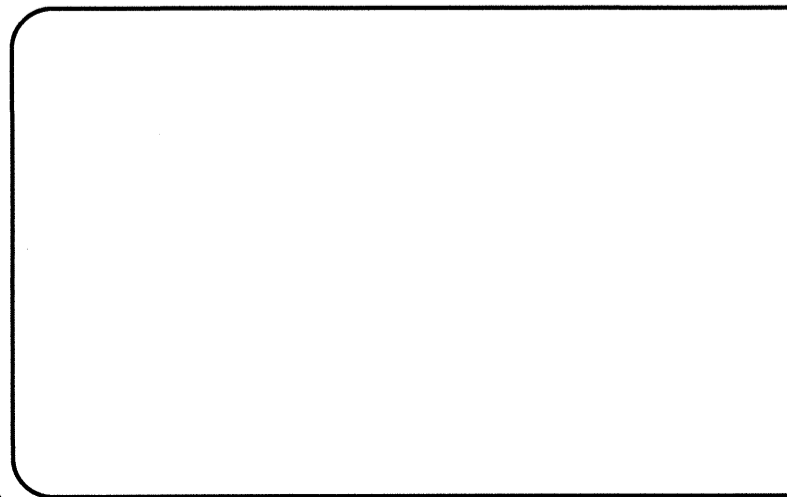
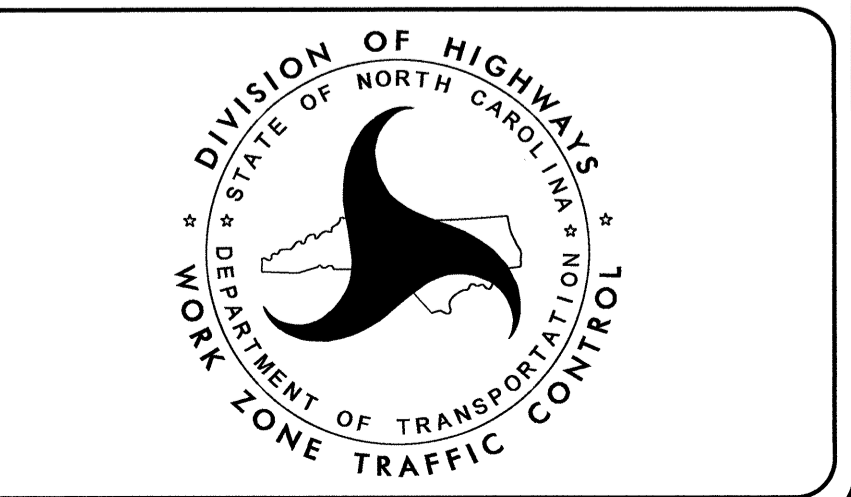
TIP PROJECT:

26-SEP-2012 16:57 \\dot\fer\00101\Proj\TIPProjects-B\B4834\TrafficControl\TCP\B-4834_TC_TMP_01.dgn shasson AT 1E265820



N.C.D.O.T. WORK ZONE TRAFFIC CONTROL

J. S. BOURNE, P.E. STATE TRAFFIC MANAGEMENT ENGINEER
 J. ISHAK, P.E. TRAFFIC CONTROL PROJECT ENGINEER
 B. SCHOENBAUER, P.E. TRAFFIC CONTROL PROJECT DESIGN ENGINEER
 S. HASSAN TRAFFIC CONTROL DESIGN ENGINEER



APPROVED: *Ben Behm*
 DATE: 9/26/2012

SEAL

ROADWAY STANDARD DRAWINGS

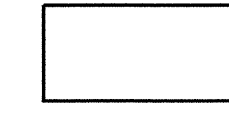
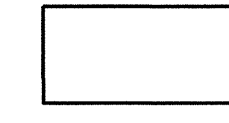
THE FOLLOWING ROADWAY STANDARDS AS SHOWN IN "ROADWAY STANDARD DRAWINGS" - PROJECT SERVICES UNIT - N.C. DEPARTMENT OF TRANSPORTATION - RALEIGH, N.C., DATED JANUARY 2012 ARE APPLICABLE TO THIS PROJECT AND BY REFERENCE HEREBY ARE CONSIDERED A PART OF THESE PLANS:

<u>STD. NO.</u>	<u>TITLE</u>
1101.01	WORK ZONE WARNING SIGNS
1101.03	TEMPORARY ROAD CLOSURES
1101.11	TRAFFIC CONTROL DESIGN TABLES
1110.01	STATIONARY WORK ZONE SIGNS
1145.01	BARRICADES

LEGEND

GENERAL

- DIRECTION OF TRAFFIC FLOW
- DIRECTION OF PEDESTRIAN TRAFFIC FLOW
- EXIST. PVMT.
- NORTH ARROW
- PROPOSED PVMT.



TEMPORARY PAVEMENT MARKING

N/A

TRAFFIC CONTROL DEVICES

- BARRICADE (TYPE III)
- CONE
- DRUM SKINNY DRUM TUBULAR MARKER
- TEMPORARY CRASH CUSHION
- FLASHING ARROW BOARD
- FLAGGER
- LAW ENFORCEMENT
- TRUCK MOUNTED ATTENUATOR (TMA)
- CHANGEABLE MESSAGE SIGN

TEMPORARY SIGNING

- PORTABLE SIGN
- STATIONARY SIGN
- STATIONARY OR PORTABLE SIGN

SIGNALS

- EXISTING PROPOSED TEMPORARY

PAVEMENT MARKINGS

- EXISTING LINES
- TEMPORARY LINES

PAVEMENT MARKERS

- CRYSTAL/CRYSTAL
- CRYSTAL/RED
- YELLOW/YELLOW

PAVEMENT MARKING SYMBOLS

- PAVEMENT MARKING SYMBOLS

APPROVED: <i>Ben Johnson</i> DATE: 9/26/12 		<h3>ROADWAY STANDARD DRAWINGS & LEGEND</h3>
--	--	---

26-SEP-2012 16:57
 \\dot\dfsroot\01\Proj\TIP\Projects-B\B4834\TrafficControl\TCP\B-4834_TC_TMP_01A.dgn
 shossan AT 1265820

MANAGEMENT STRATEGIES

THE FOLLOWING LISTED STRATEGIES DERIVE FROM DETAILED DESIGN LEVEL ASSESSMENTS OF THE WORK ZONE IMPACTS CONDUCTED DURING THE DEVELOPMENTAL STAGES OF THIS TRANSPORTATION MANAGEMENT PLAN (TMP).

RECOMMENDED MANAGEMENT STRATEGIES RELATIVE TO THIS TMP ARE AS FOLLOWS:

- FULL ROAD CLOSURE
- TRAFFIC TO BE MAINTAINED ON THE FOLLOWING OFF-SITE DETOUR ROUTE THROUGHOUT THE DURATION OF THIS PROJECT.
- SR 1200 (DREWRY RD.)
 - SR 1219 (ELLINGTON RD.)

PHASING

STEP 1: USING ROADWAY STANDARD DRAWING 1101.03, SHEET 2 OF 9; AND SHEETS TMP-2 AND SD-1, INSTALL DETOUR SIGNS. PLACE TYPE III BARRICADES TO CLOSE SR 1218 (BURCHETTE RD.) TO THROUGH TRAFFIC, AND PLACE TRAFFIC ONTO PROPOSED DETOUR.

STEP 2: AWAY FROM TRAFFIC, COMPLETE THE FOLLOWING:

- 1) REMOVE EXISTING STRUCTURE NO. 23 AND CONSTRUCT PROPOSED STRUCTURE. SEE ROADWAY AND STRUCTURE PLANS.
- 2) CONSTRUCT PROPOSED ROADWAY UP TO AND INCLUDING THE FINAL LAYER OF SURFACE COURSE. SEE ROADWAY PLANS.
- 3) PLACE FINAL PAVEMENT MARKINGS AS DIRECTED BY THE ENGINEER.

STEP 3: REMOVE ALL WORK ZONE TRAFFIC CONTROL DEVICES, ALL ROAD CLOSURE SIGNING, AND ALL DETOUR SIGNING. OPEN SR 1218 (BURCHETTE RD.) TO PROPOSED FINAL TRAFFIC PATTERN.

GENERAL NOTES

CHANGES MAY BE REQUIRED WHEN PHYSICAL DIMENSIONS IN THE DETAIL DRAWINGS, STANDARD DETAILS, AND ROADWAY DETAILS ARE NOT ATTAINABLE TO MEET FIELD CONDITIONS OR RESULT IN DUPLICATE OR UNDESIRED OVERLAPPING OF DEVICES. MODIFICATION MAY INCLUDE: MOVING, SUPPLEMENTING, COVERING, OR REMOVAL OF DEVICES AS DIRECTED BY THE ENGINEER.

THE FOLLOWING GENERAL NOTES APPLY AT ALL TIMES FOR THE DURATION OF CONSTRUCTION PROJECT EXCEPT WHEN OTHERWISE NOTED IN THE PLAN THE OR DIRECTED BY THE ENGINEER.

TRAFFIC PATTERN ALTERATIONS

- A) NOTIFY THE ENGINEER THIRTY (30) CALENDAR DAYS PRIOR TO ANY TRAFFIC PATTERN ALTERATION.

SIGNING

- B) PROVIDE SIGNING AND DEVICES REQUIRED TO CLOSE THE ROAD ACCORDING TO THE ROADWAY STANDARD DRAWINGS AND TRAFFIC CONTROL PLANS.

PROVIDE SIGNING REQUIRED FOR THE OFFSITE DETOUR ROUTE AS SHOWN IN THE TRAFFIC CONTROL PLANS.

- C) COVER OR REMOVE ALL SIGNS AND DEVICES REQUIRED TO CLOSE THE ROAD WHEN ROAD CLOSURE IS NOT IN OPERATION.

COVER OR REMOVE ALL SIGNS REQUIRED FOR THE OFFSITE DETOUR WHEN THE DETOUR IS NOT IN OPERATION.

- D) ENSURE ALL NECESSARY SIGNING IS IN PLACE PRIOR TO ALTERING ANY TRAFFIC PATTERN.

TRAFFIC CONTROL DEVICES

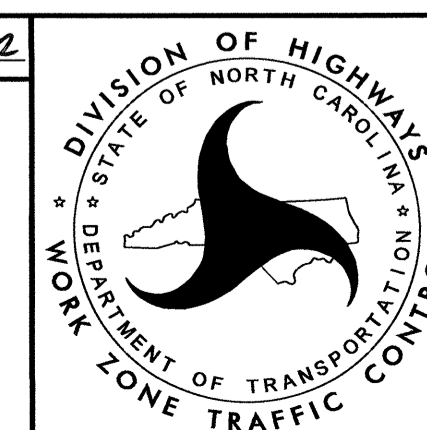
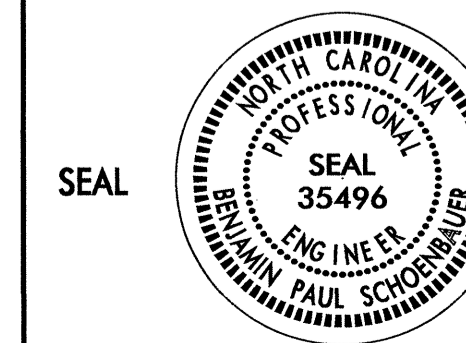
- E) PLACE TYPE III BARRICADES, WITH "ROAD CLOSED" SIGN R11-2 ATTACHED, OF SUFFICIENT LENGTH TO CLOSE ENTIRE ROADWAY.

PAVEMENT MARKINGS AND MARKERS

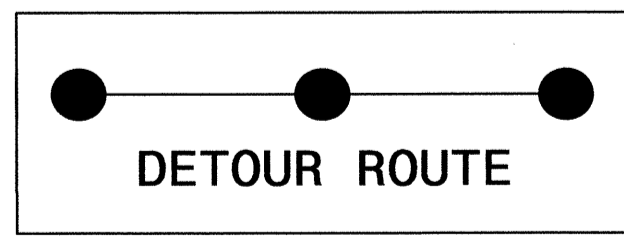
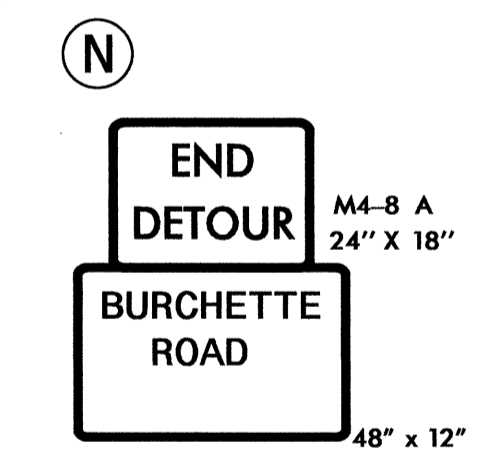
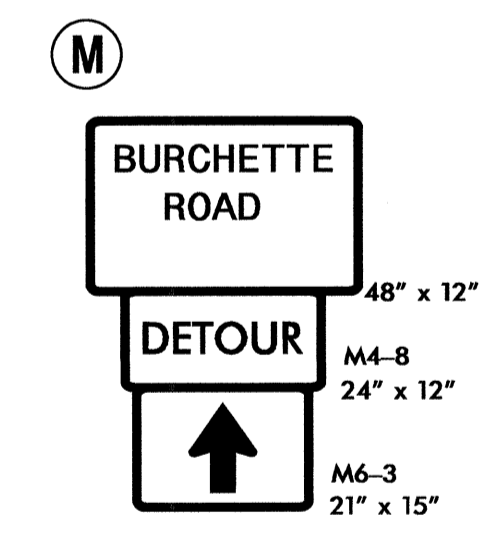
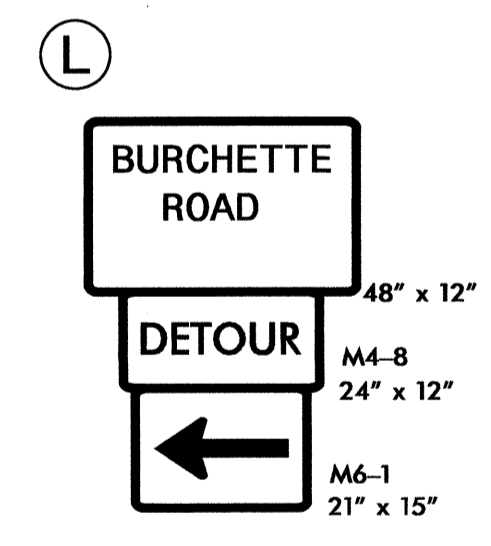
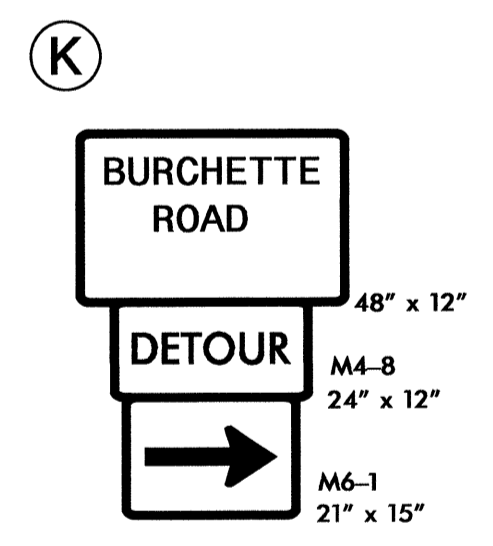
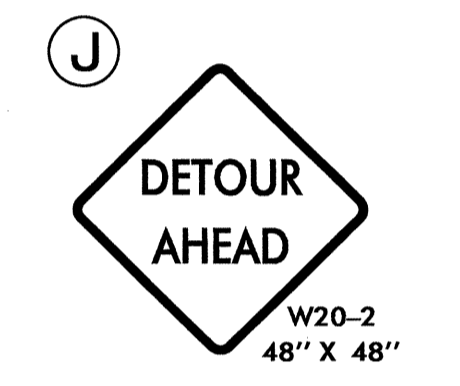
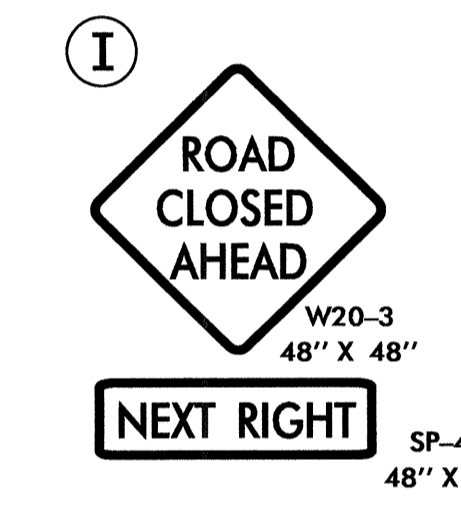
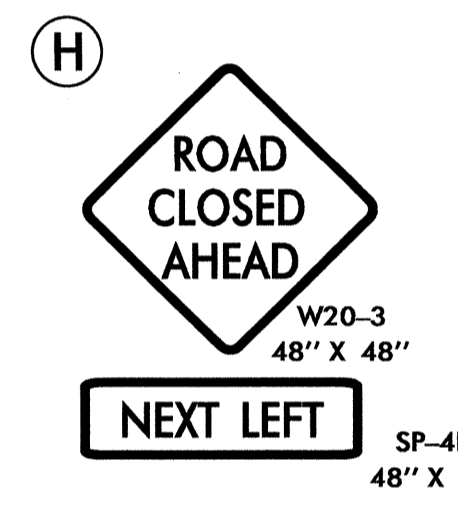
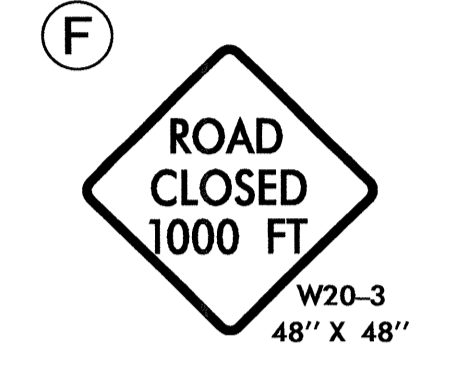
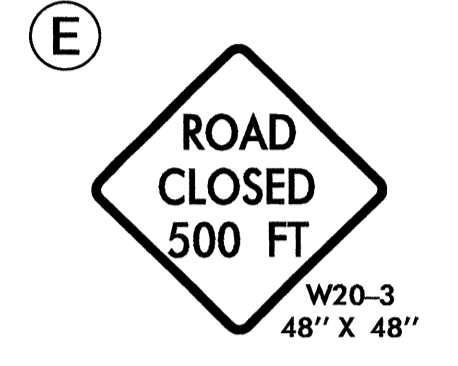
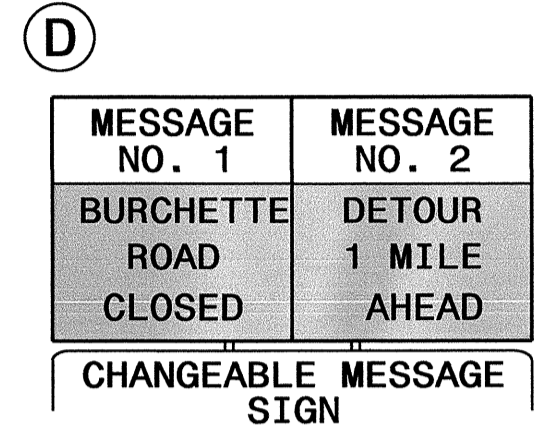
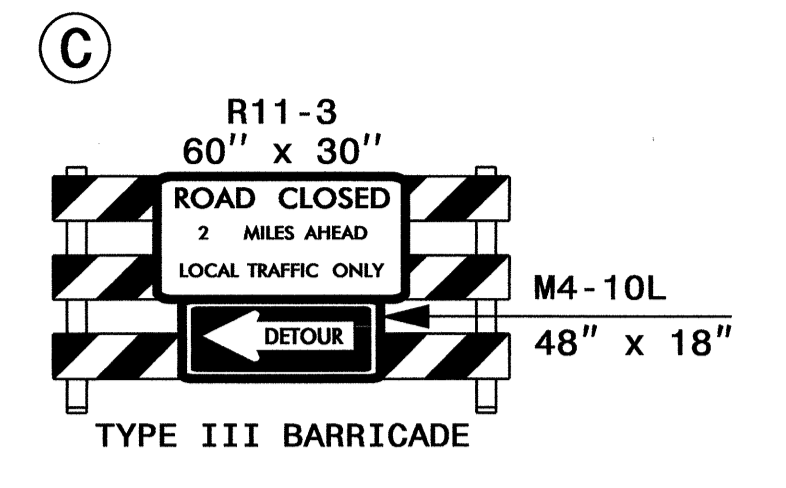
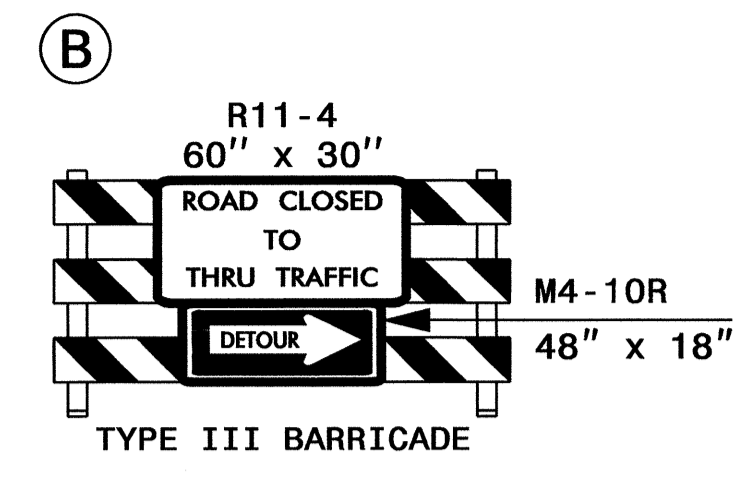
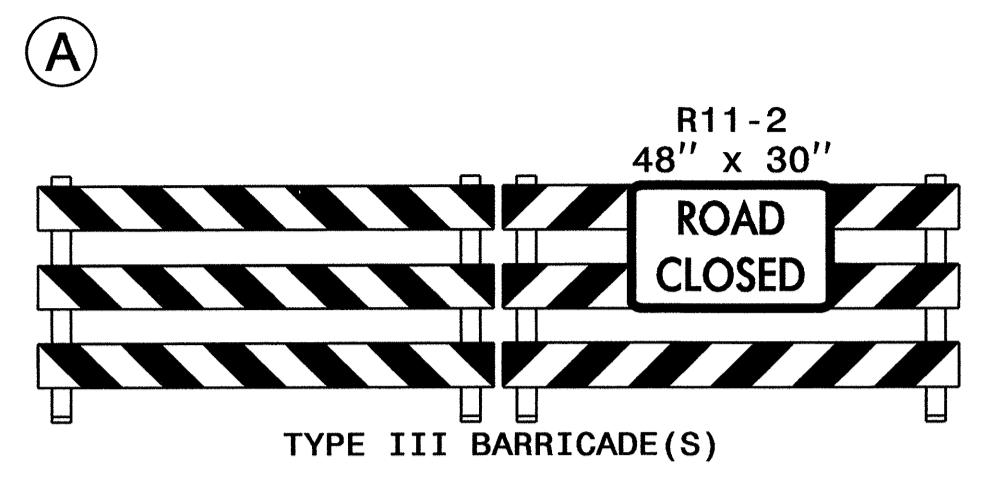
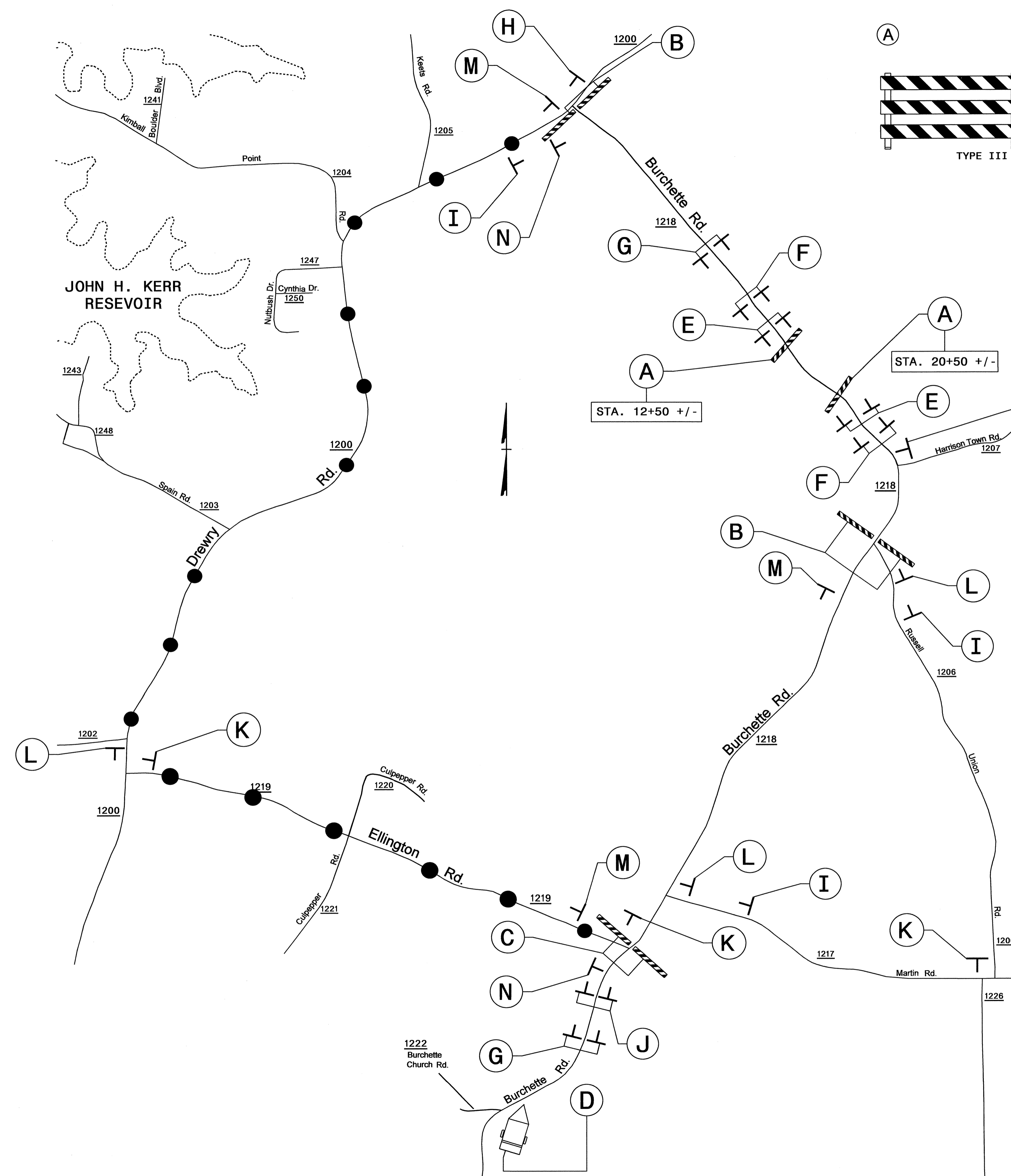
- F) INSTALL PAVEMENT MARKINGS AND PAVEMENT MARKERS ON THE FINAL SURFACE AS SHOWN IN THE PAVEMENT MARKING PLAN.

- G) TIE PROPOSED PAVEMENT MARKING LINES TO EXISTING PAVEMENT MARKING LINES.

APPROVED: *Ben Schuchman* DATE: 9/26/12



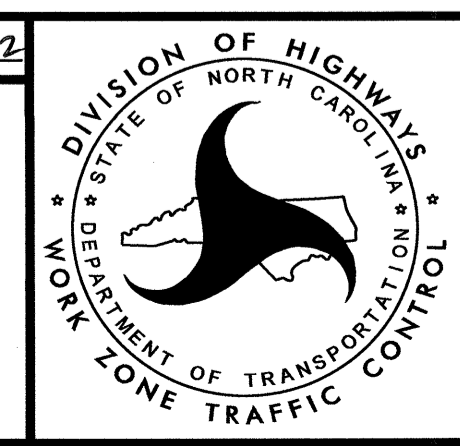
**TRANSPORTATION
OPERATIONS
PLAN**



NOTES:

- REFER TO ROADWAY STANDARD DRAWING 1101.03, SHEET 1 OF 9 FOR SIGN DISTANCES.
- SEE SHEET SD-1 FOR SIGN DESIGN
- PLACE CHANGEABLE MESSAGE SIGN TWO (2) WEEKS BEFORE ROAD CLOSURE, AND REMOVE CHANGEABLE MESSAGE SIGN TWO (2) WEEKS AFTER ROAD CLOSURE.

APPROVED: *Ben Johnson* DATE: 9/26/12



OFF-SITE DETOUR AND BARRICADE PLACEMENT

26-SEP-2012 16:51
 V:\CH\Projects\TrafficControl\B-4834-TC-TMP-02.dgn
 shasson AT 12:26:58Z