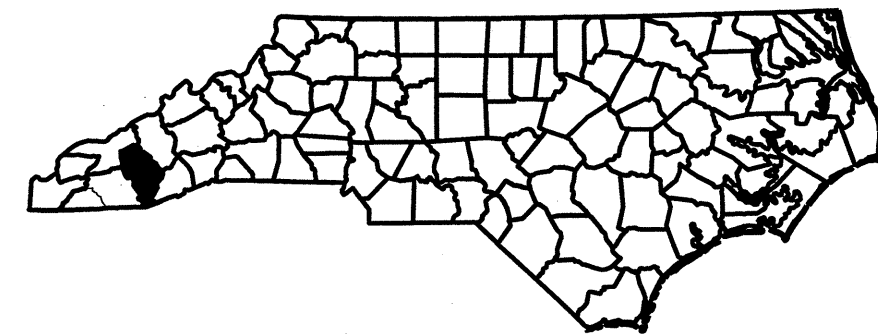
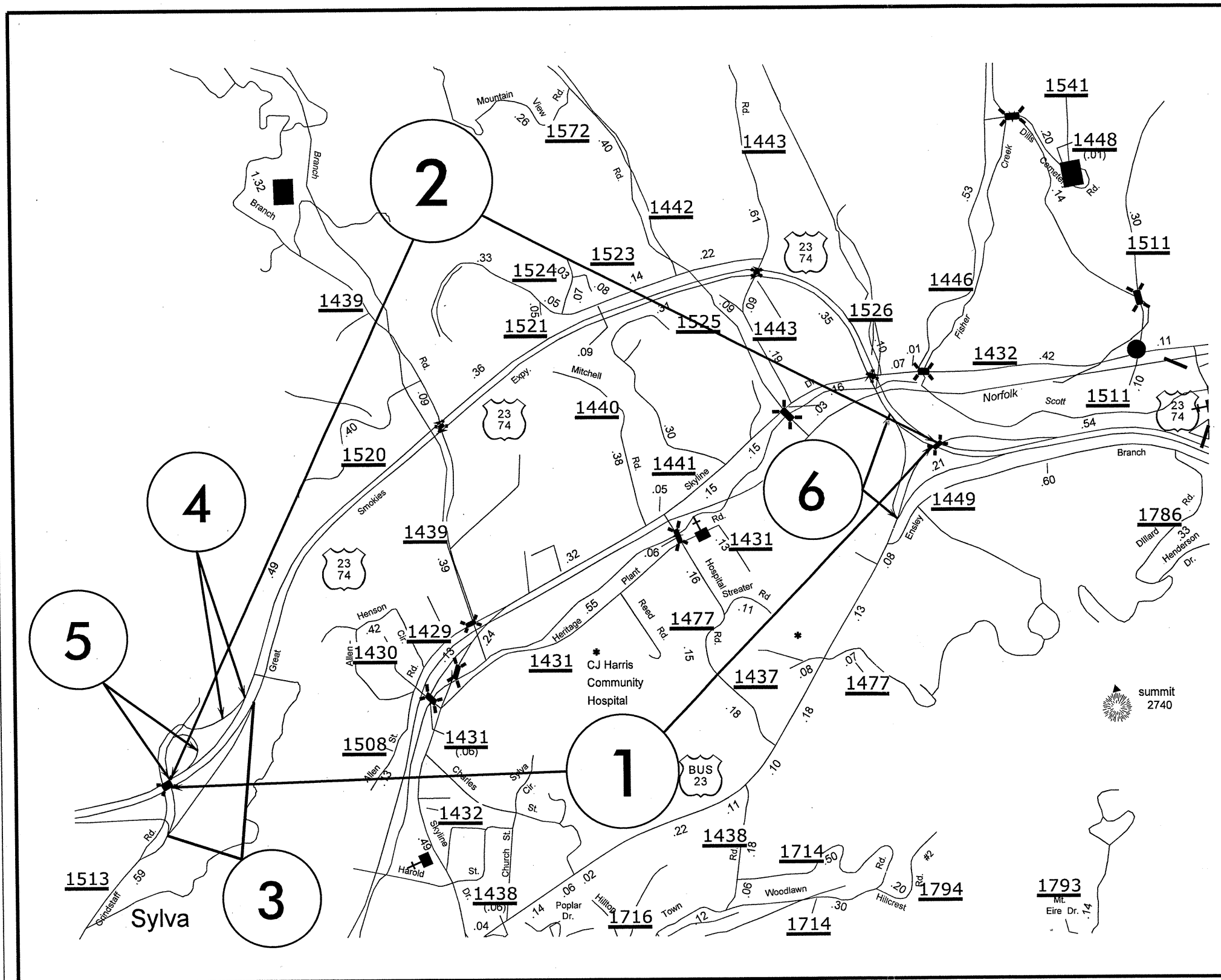


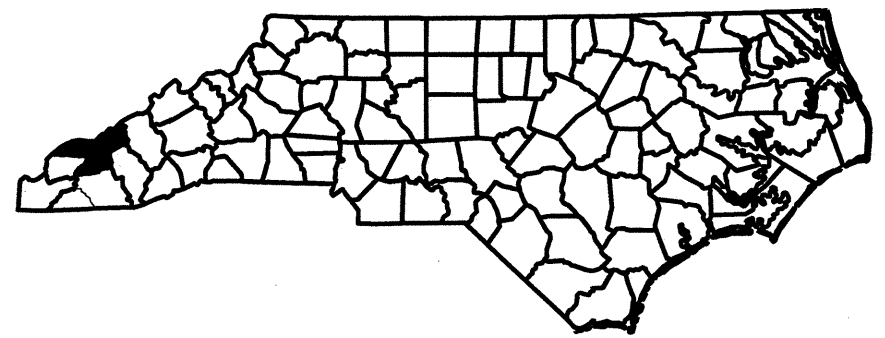
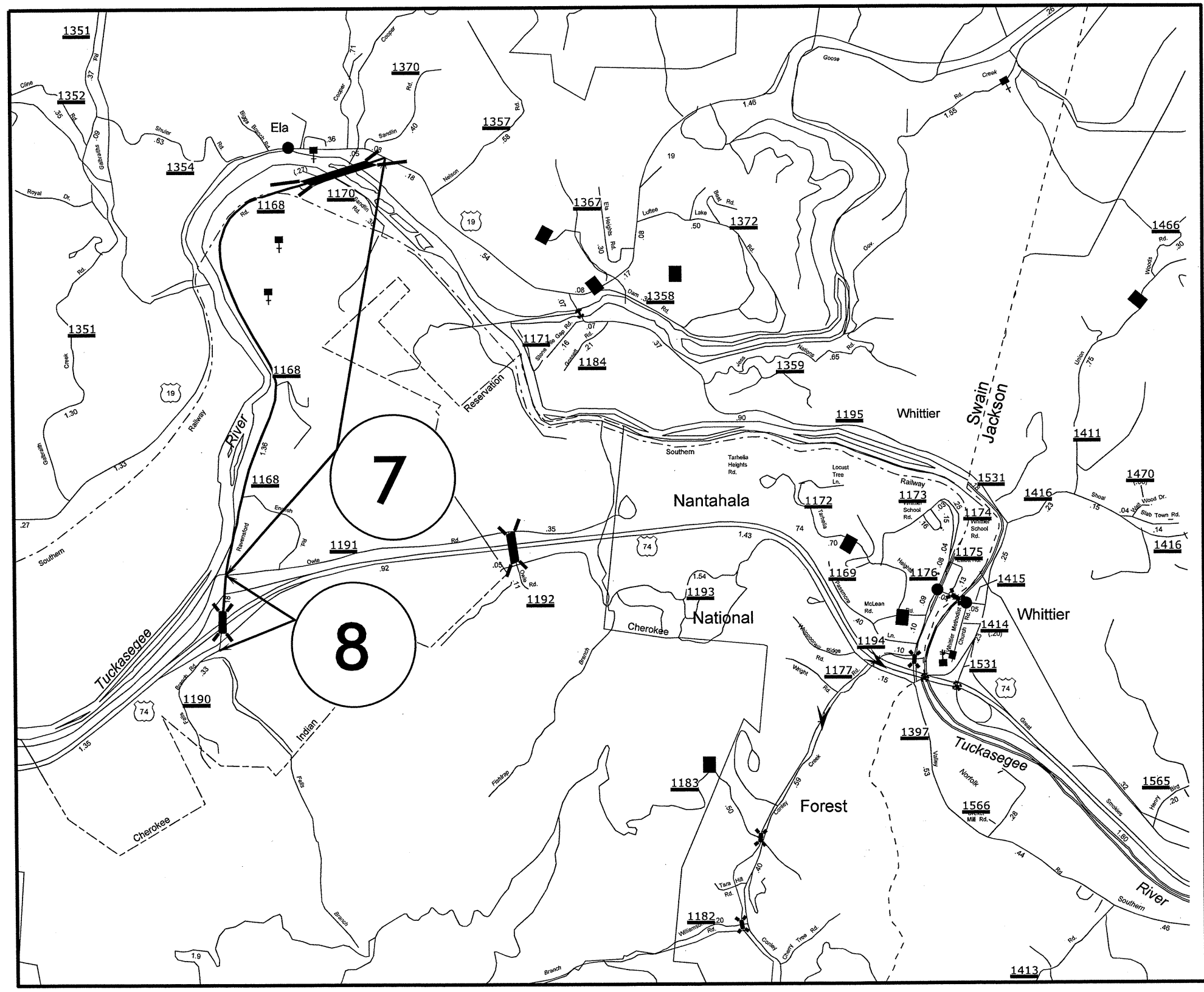
CONTRACT RESURFACING JACKSON COUNTY

PROJECT REFERENCE NO.	SHEET NO.	
14CR.10501.9, etc.	1	
STATE PROJECT	F.A. PROJECT NO.	DESCRIPTION
14CR.20871.9		
14C.087071		



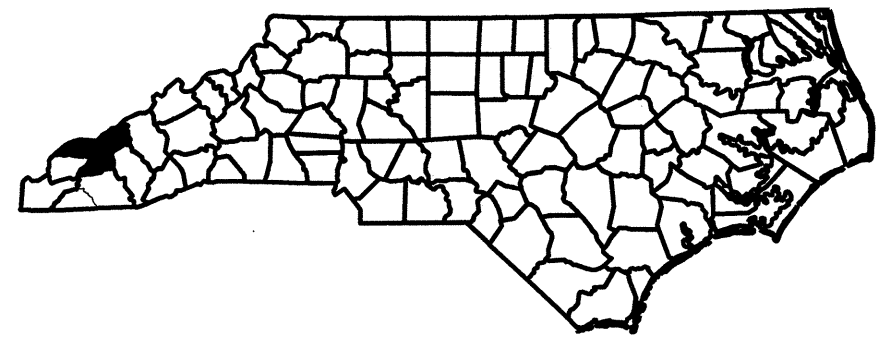
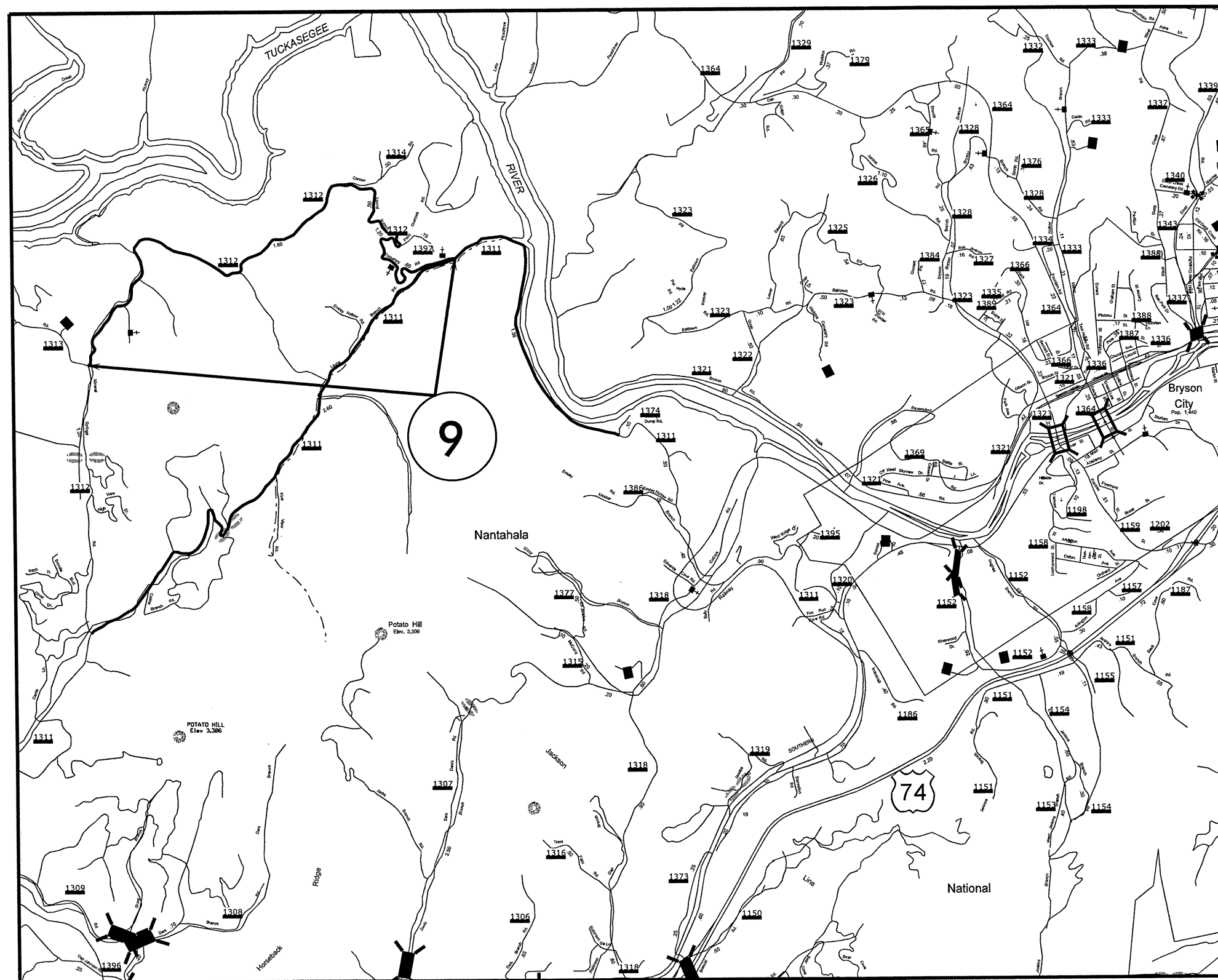
CONTRACT RESURFACING SWAIN COUNTY

PROJECT REFERENCE NO.	SHEET NO.	
14CR.10501.9, etc.	2	
STATE PROJECT	F.A. PROJECT NO.	DESCRIPTION
14CR.20871.9		
14C.087071		



CONTRACT RESURFACING SWAIN COUNTY

PROJECT REFERENCE NO.		SHEET NO.
14CR.10501.9, etc.		3
STATE PROJECT	F.A. PROJECT NO.	DESCRIPTION
14CR.20871.9		
14C.087071		

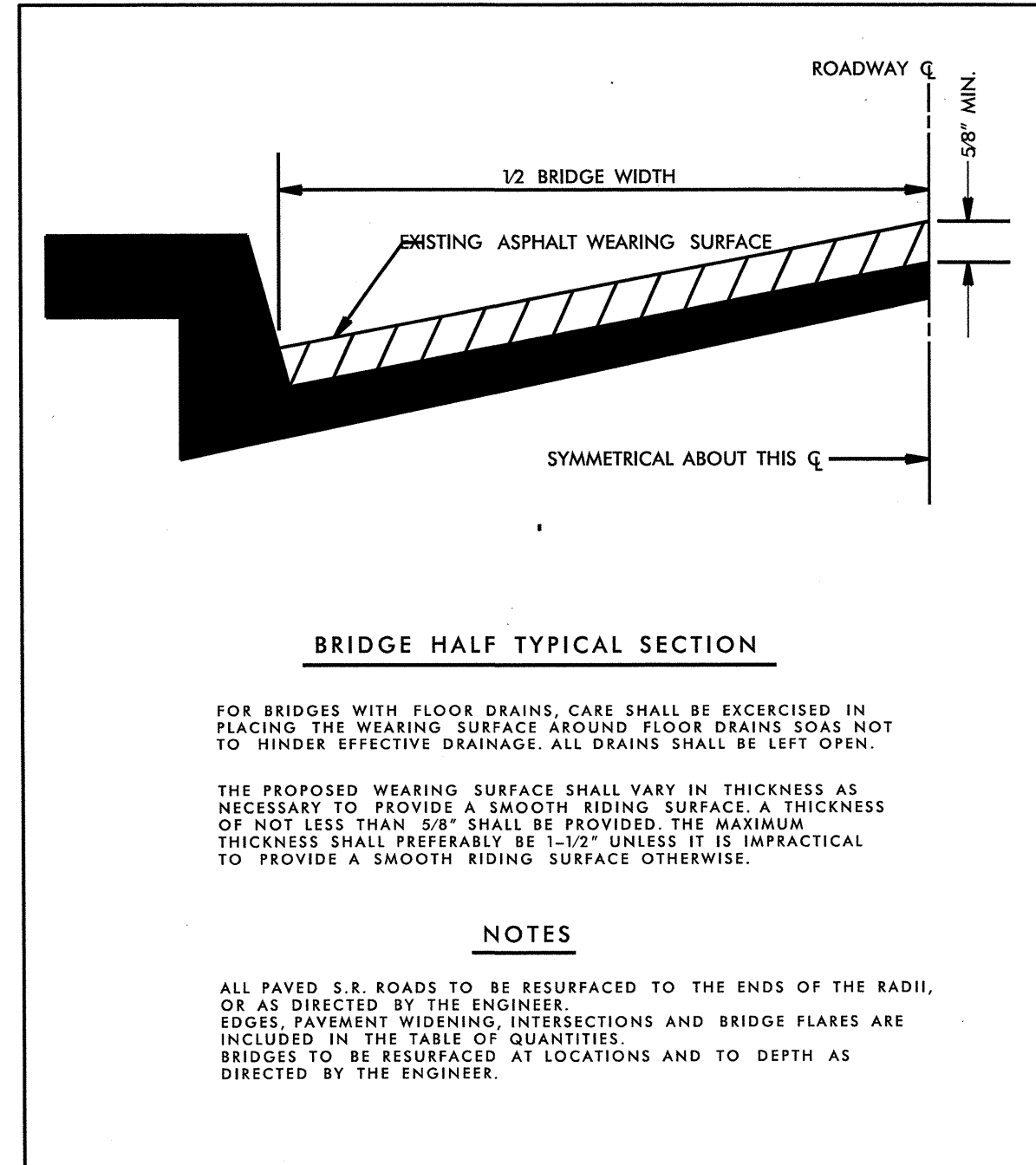


050197

SURFACING SCHEDULE

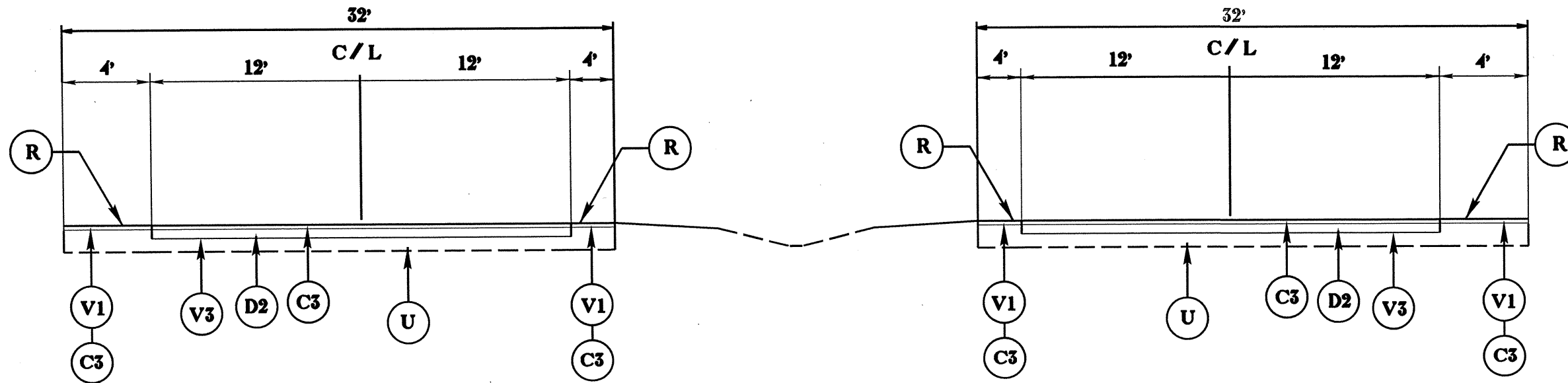
ITEM NO	DESCRIPTION
C1	ASPHALT CONCRETE SURFACE COURSE LEVELING, TYPE SF9.5A, AT AN AVERAGE RATE OF 120 LBS PER SQ YD
C2	ASPHALT CONCRETE SURFACE COURSE, TYPE S9.5B, AT AN AVERAGE RATE OF 168 LBS PER SQ YD (1 1/2")
C3	ASPHALT CONCRETE SURFACE COURSE, TYPE S9.5C, AT AN AVERAGE RATE OF 168 LBS PER SQ YS (1 1/2")
D1	ASPHALT CONCRETE INTERMEDIATE COURSE, TYPE I19.0B, AT AN AVERAGE RATE OF 342 LBS. PER SQ YD (3")
D2	ASPHALT CONCRETE INTERMEDIATE COURSE, TYPE I19.0C, AT AN AVERAGE RATE OF 342 LBS. PER SQ YD (3")
R	MILLED RUMBLE STRIPS
T	SHOULDER RECONSTRUCTION - SEE PROJECT SPECIAL PROVISIONS
U	EXISTING PAVEMENT
V1	MILLING ASPHALT PAVEMENT 1 1/2" IN DEPTH IN DISTRESSED AREAS AS DIRECTED BY PROJECT ENGINEER SEE PROJECT SPECIAL PROVISIONS
V2	MILLING ASPHALT PAVEMENT 3" IN DEPTH AS DIRECTED BY PROJECT ENGINEER - SEE PROJECT SPECIAL PROVISIONS
V3	MILLING ASPHALT PAVEMENT 4 1/2" IN DEPTH AS DIRECTED BY PROJECT ENGINEER - SEE PROJECT SPECIAL PROVISIONS

PROJECT REFERENCE NO.		SHEET NO.
14CR.10501.9, etc.		4
STATE PROJECT	F.A. PROJECT NO.	DESCRIPTION
14CR.20871.9		
14C.087071		



PROJECT REFERENCE NO.		SHEET NO.
14CR.10501.9, etc.		5
STATE PROJECT	F.A. PROJECT NO.	DESCRIPTION
14CR.20871.9		
14C.087071		

TYPICAL 1



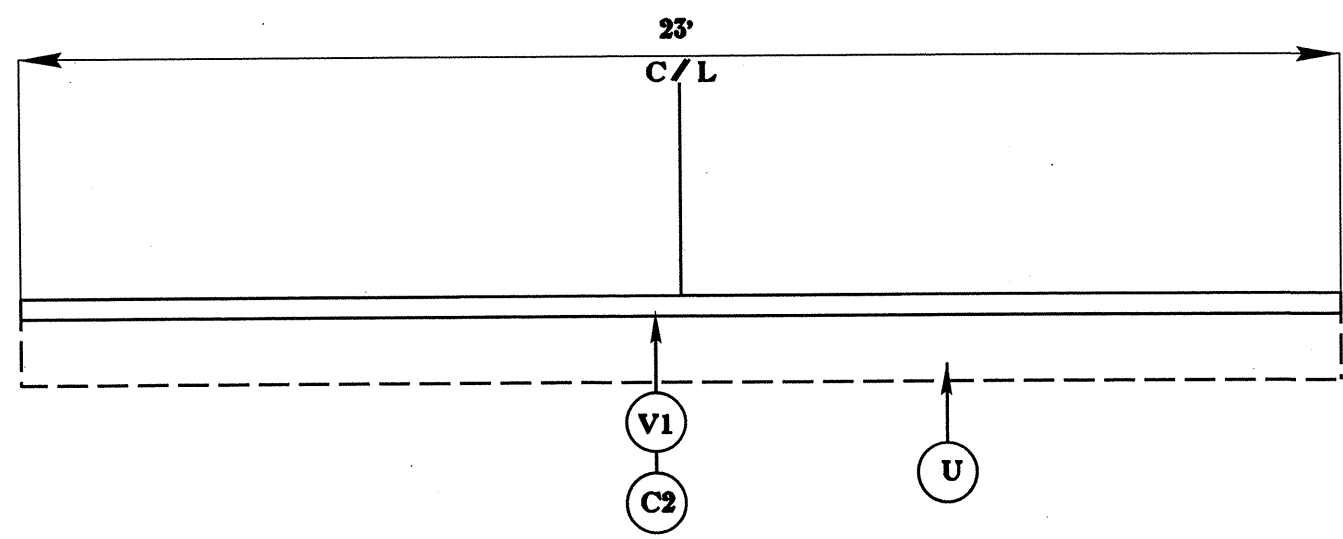
NOTE: MILLING DEPTH ON SHOULDER AS DIRECTED BY PROJECT ENGINEER
 SURFACE COURSE SHALL NOT EXCEED EXISTING GRADE

NOTE: BRIDGE DECK MILLING AT 1 1/2" EXCEPT FOR BRIDGE #125 (EAST BOUND LANE
 OVER SCOTTS CREEK)

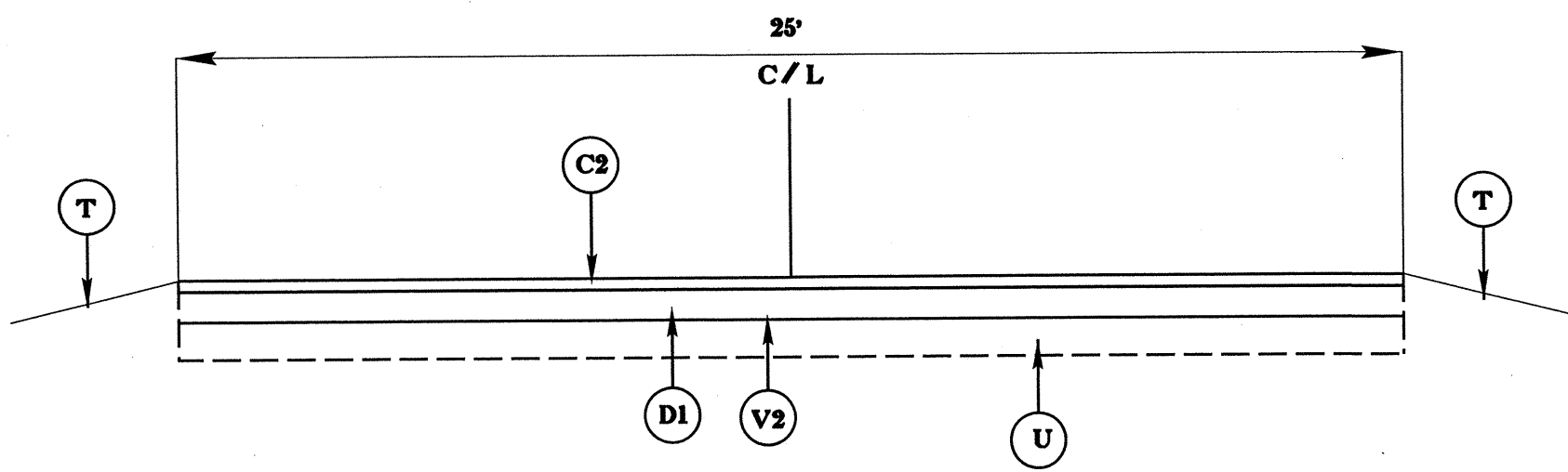
050197

PROJECT REFERENCE NO.		SHEET NO.
14CR.10501.9, etc.		6
STATE PROJECT	F.A. PROJECT NO.	DESCRIPTION
14CR.20871.9		
14C.087071		

TYPICAL 2



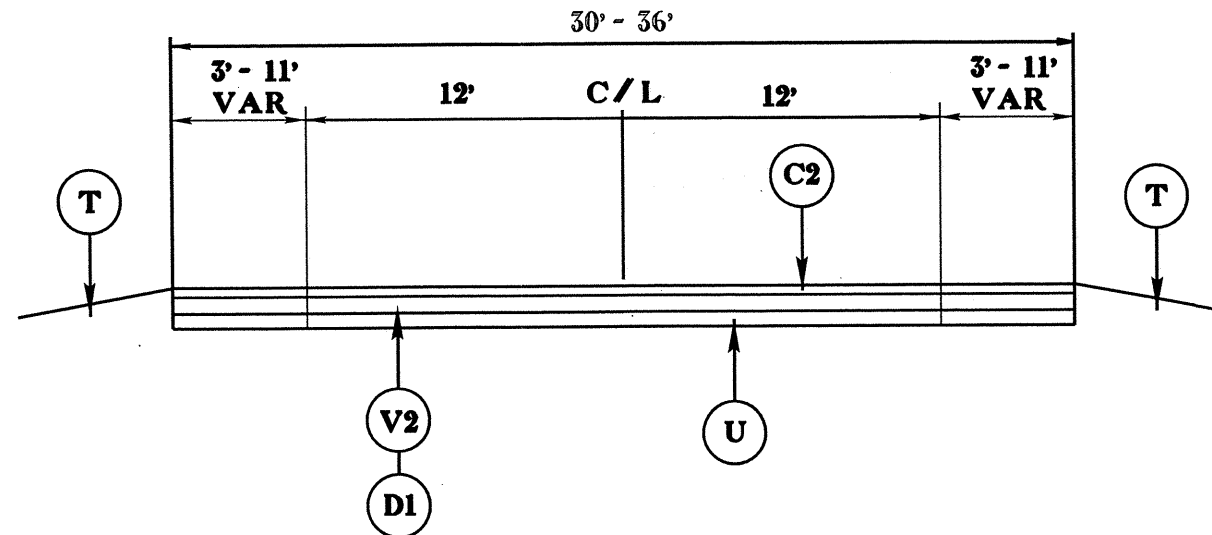
TYPICAL 3



050187

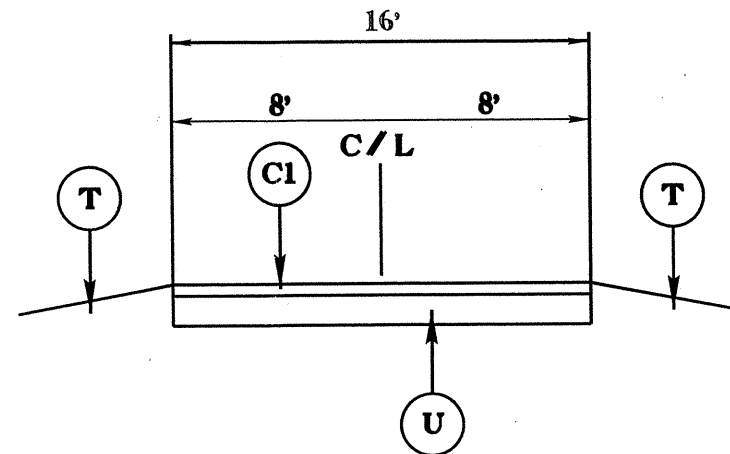
PROJECT REFERENCE NO.		SHEET NO.
14CR.10501.9, etc.		7
STATE PROJECT	F.A. PROJECT NO.	DESCRIPTION
14CR.20871.9		
14C.087071		

TYPICAL 4



NOTE: MILLING AT LOCATIONS AS DIRECTED BY PROJECT ENGINEER.

* TYPICAL 5



* NOTE: THIS MAP CONTAINS LEVELING, SHOULDER RECONSTRUCTION, AND CENTERLINE PAINT ONLY.

PROJECT NO.	SHEET NO.	TOTAL NO.
14CR.10501.9, etc.	8	

SUMMARY OF QUANTITIES

PROJECT NO	COUNTY	MAP NO	ROUTE	DESCRIPTION	TYP NO	FINAL SURFACE TESTING REQUIRED	WARM MIX ASPHALT REQUIRED	LENGTH MI	WIDTH FT	INCIDENTAL STONE BASE TONS	SHOULDER RECONSTRUCTION SMI	1 1/2" MILLING SY	4 1/2" MILLING SY	3" MILLING SY	INCIDENTAL MILLING SY	INTERM. COURSE, I19.0B TONS	INTERM. COURSE, I19.0C TONS	SURFACE COURSE, S9.5B TONS	SURFACE COURSE, S9.5C TONS	SURFACE COURSE, SF9.5A (LEVELING COURSE) TONS	ASPHALT BINDER FOR PLANT MIX TONS	MILLED RUMBLE STRIPS (ASPHALT CEMENT CONCRETE) LF
14CR.10501.9	Jackson	1	US 74 EAST	FROM SR-1513 TO US-23 BUS	1	YES	NO	2.00	32			11,733	30,507		2,844		5,688		3,483		479	21,120
	Jackson	2	US 74 WEST	FROM SR-1513 TO US 23 BUS	1	YES	NO	2.00	32			11,733	30,507		2,844		5,688		3,483		479	21,120
	Jackson	3	US 74 EAST ACCESS RAMP	FROM SR 1513 TO US 74	2	NO	NO	0.44	23			4,963						552				33
	Jackson	4	US 74 EXIT 83	FORM US 74 WEST TO SR 1513	2	NO	NO	0.11	23			1,690						135				8
	Jackson	5	US 74 WEST ACCESS RAMP	FROM SR 1513 TO US 74 WEST	2	NO	NO	0.16	23			2,159						197				12
	Jackson	6	US 74 EXIT 85	FROM US 74 EAST TO US 23 BUS	3	NO	NO	0.23	25		0.46			3,373		629		308				49
TOTAL FOR PROJ NO. 14CR.10501.9								4.94			0.46	32,278	61,014	3,373	5,688	629	11,376	1,192	6,966		1,060	42,240
14CR.20871.9	Swain	7	SR-1168	FROM US-19 TO SR-1190	4	NO	NO	1.66	32		3.32			4,385	800	880		2,891				216
14CR.20871.9	Swain	8	SR-1190	FROM SR-1168 TO .05 MILES SOUTH OF BRIDGE #40	4	NO	NO	0.08	36	30	0.16			800	200	136		157				16
TOTAL FOR PROJ NO. 14CR.20871.9								1.74		30	3.48			5,185	1,000	1,016		3,048				232
14C.087071	Swain	9	SR-1312	FROM SR-1311 TO SR-1313	5	NO	NO	2.96	16	17	5.92									1,834	123	
TOTAL FOR PROJ NO. 14C.087071								2.96		17	5.92										1,834	123
GRAND TOTAL								9.64		47	9.86	32,278	61,014	8,558	6,688	1,645	11,376	4,240	6,966	1,834	1,415	42,240

THERMOPLASTIC AND PAINT QUANTITIES

PROJECT NO	COUNTY	MAP NO	ROUTE	DESCRIPTION	LENGTH	WIDTH	4415000000-N	4420000000-N	4430000000-N	4480000000-N	4516000000-N	4685000000-E		4686000000-E	4695000000-E	4710000000-E	4725000000-E	4810000000-E		4820000000-E	4835000000-E	4840000000-N		4845000000-N		4905000000-N														
							FLASHING ARROW PANELS, TYPE C	CHANGEABLE MESSAGE SIGN	DRUMS	TMA	SKINNY DRUMS	4" X 90 M WHITE THERMO	4" X 90 M YELLOW THERMO	4" X 120 M WHITE THERMO	8" X 90 M WHITE THERMO	24" X 120 M WHITE THERMO	THERMO STR ARROW 90 M	4" WHITE PAINT	4" YELLOW PAINT	8" WHITE PAINT	24" WHITE PAINT	PAINT MSG RXR	PAINT MSG SCHOOL	PAINT STR ARROW	PAINT LT ARROW	SNOW PLOWABLE MARKERS														
EA	EA	EA	EA	EA	EA	EA	EA	EA	EA	EA	EA	EA	EA	EA	EA	EA	EA	EA	EA	EA	EA	EA	EA	EA	EA	EA														
14CR.10501.9	Jackson	1	US 74 EAST	FROM SR-1513 TO US-23 BUS	2.00	32	2	2	50	2	250	10,960	10,560	2,640	800			3	13,600	10,560	800					3	EA	EA	EA	EA	166									
	Jackson	2	US 74 WEST	FROM SR-1513 TO US 23 BUS	2.00	32						10,960	10,560	2,640	800			3	13,600	10,560	800					3				166										
	Jackson	3	US 74 EAST ACCESS RAMP	FROM SR 1513 TO US 74	0.44	23						5,057	2,904																											
	Jackson	4	US 74 EXIT 83	FORM US 74 WEST TO SR 1513	0.11	23						1,184	726																											
	Jackson	5	US 74 WEST ACCESS RAMP	FROM SR 1513 TO US 74 WEST	0.16	23						1,722	1,056																											
	Jackson	6	US 74 EXIT 85	FROM US 74 EAST TO US 23 BUS	0.23	25						2,475	1,518			24														332										
TOTAL FOR PROJ NO. 14CR.10501.9								2	2	50	2	250	32,358	27,324	5,280	1,600	24	6	27,200	21,120	1,600					6					6	332								
												59,682													48,320						6									
14CR.20871.9	Swain	7	SR-1168	FROM US-19 TO SR-1190	1.66	32													74,446	63,280	800	320	8	12			2		120											
	Swain	8	SR-1190	FROM SR-1168 TO .05 MILES SOUTH OF BRIDGE #40	0.08	36													3,444	2,112									12											
TOTAL FOR PROJ NO. 14CR.20871.9								1.74												77,890	65,392	800	320	8	12			2		132										
																									143,282						20	2								
14C.087071	Swain	9	SR-1312	FROM SR-1311 TO SR-1313	2.96	16																																		
TOTAL FOR PROJ NO. 14C.087071																																								
																																						39,072		
																																						39,072		
																																						39,072		
GRAND TOTAL								2	2	50	2	250	32,358	27,324	5,280	1,600	24	6	105,090	125,584	2,400	320	8	12		6	2					464								
												59,682													230,674						20	8								