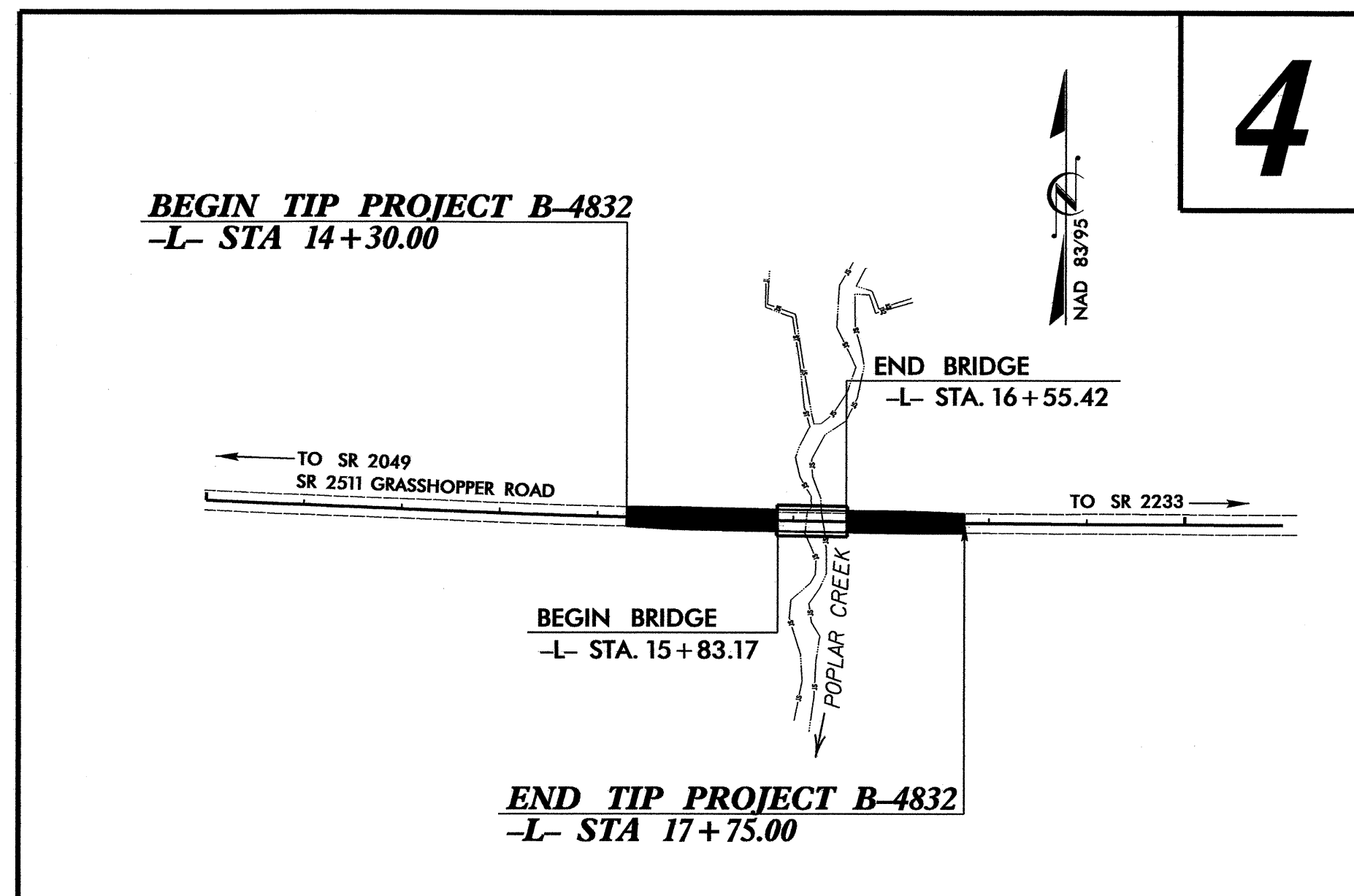


TIP PROJECT: B-4832

STATE OF NORTH CAROLINA
 DIVISION OF HIGHWAYS
 PLAN FOR PROPOSED
 HIGHWAY EROSION CONTROL
WAKE COUNTY

**LOCATION: BRIDGE NO. 230 OVER POPLAR CREEK ON
 SR 2511 (GRASSHOPPER ROAD)**

TYPE OF WORK: GRADING, DRAINAGE, PAVING AND STRUCTURES



STATE	STATE PROJECT REFERENCE NO.	SHEET NO.	TOTAL SHEETS
N.C.	B-4832	EC-1	
STATE PROJ. NO.	F.A. PROJ. NO.	DESCRIPTION	

EROSION AND SEDIMENT CONTROL MEASURES

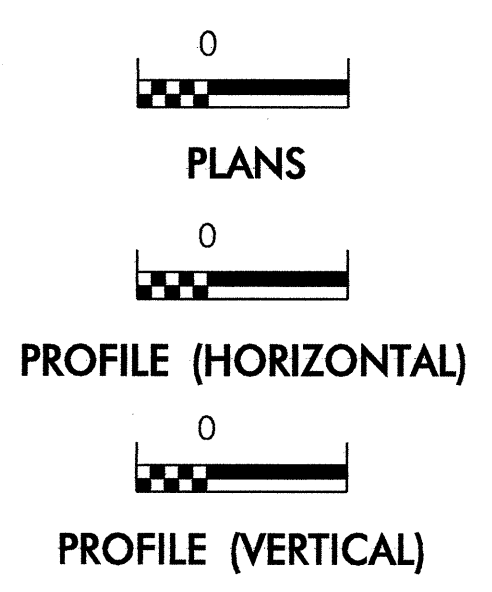
Std. #	Description	Symbol
1630.03	Temporary Silt Ditch	TD
1630.05	Temporary Diversion	TD
1605.01	Temporary Silt Fence	III III III
1606.01	Special Sediment Control Fence	III III III
1622.01	Temporary Berms and Slope Drains	TBD
1630.02	Silt Basin Type B	Silt Basin Symbol
1633.01	Temporary Rock Silt Check Type-A	Rock Silt Check Symbol
	Temporary Rock Silt Check Type-A with Matting and Polyacrylamide (PAM)	Rock Silt Check with PAM Symbol
1633.02	Temporary Rock Silt Check Type-B	Rock Silt Check Symbol
	Wattle / Coir Fiber Wattle	Wattle Symbol
	Wattle / Coir Fiber Wattle with Polyacrylamide (PAM)	Wattle with PAM Symbol
1634.01	Temporary Rock Sediment Dam Type-A	Rock Sediment Dam Type A Symbol
1634.02	Temporary Rock Sediment Dam Type-B	Rock Sediment Dam Type B Symbol
1635.01	Rock Pipe Inlet Sediment Trap Type-A	Rock Pipe Inlet Sediment Trap Type A Symbol
1635.02	Rock Pipe Inlet Sediment Trap Type-B	Rock Pipe Inlet Sediment Trap Type B Symbol
1630.04	Stilling Basin	Stilling Basin Symbol
1630.06	Special Stilling Basin	Special Stilling Basin Symbol
	Rock Inlet Sediment Trap:	
1632.01	Type A	A
1632.02	Type B	B
1632.03	Type C	C
	Skimmer Basin	Skimmer Basin Symbol
	Tiered Skimmer Basin	Tiered Skimmer Basin Symbol
	Infiltration Basin	Infiltration Basin Symbol

**THIS PROJECT CONTAINS
 EROSION CONTROL PLANS
 FOR CLEARING AND
 GRUBBING PHASE OF
 CONSTRUCTION.**

**THIS PROJECT HAS
 BEEN DESIGNED TO
 SENSITIVE WATERSHED
 STANDARDS.**

**ENVIRONMENTALLY
 SENSITIVE AREA(S) EXIST
 ON THIS PROJECT**
*Refer To E. C. Special Provisions
 for Special Considerations.*

GRAPHIC SCALE



ROADSIDE ENVIRONMENTAL UNIT
 DIVISION OF HIGHWAYS
 STATE OF NORTH CAROLINA

**THESE EROSION AND SEDIMENT CONTROL PLANS COMPLY
 WITH THE REGULATIONS SET FORTH BY THE
 NCG-010000 GENERAL CONSTRUCTION PERMIT EFFECTIVE AUGUST 3, 2011
 ISSUED BY THE NORTH CAROLINA DEPARTMENT OF ENVIRONMENT AND
 NATURAL RESOURCES DIVISION OF WATER QUALITY.**

Prepared in the Office of:
ROADSIDE ENVIRONMENTAL UNIT
 1 South Wilmington St.
 Raleigh, NC 27611
2012 STANDARD SPECIFICATIONS

Roadway Standard Drawings

The following roadway english standards as appear in "Roadway Standard Drawings"- Roadway Design Unit - N. C. Department of Transportation - Raleigh, N. C., dated January 2012 and the latest revision thereto are applicable to this project and by reference hereby are considered a part of these plans.

1604.01 Railroad Erosion Control Detail	1632.01 Rock Inlet Sediment Trap Type A
1605.01 Temporary Silt Fence	1632.02 Rock Inlet Sediment Trap Type B
1606.01 Special Sediment Control Fence	1632.03 Rock Inlet Sediment Trap Type C
1607.01 Gravel Construction Entrance	1633.01 Temporary Rock Silt Check Type A
1622.01 Temporary Berms and Slope Drains	1633.02 Temporary Rock Silt Check Type B
1630.01 Riser Basin	1634.01 Temporary Rock Sediment Dam Type A
1630.02 Silt Basin Type B	1634.02 Temporary Rock Sediment Dam Type B
1630.03 Temporary Silt Ditch	1635.01 Rock Pipe Inlet Sediment Trap Type A
1630.04 Stilling Basin	1635.02 Rock Pipe Inlet Sediment Trap Type B
1630.05 Temporary Diversion	1640.01 Coir Fiber Baffle
1630.06 Special Stilling Basin	1645.01 Temporary Stream Crossing
1631.01 Matting Installation	

IE-AUG-2012 (0374)
 R:\ENVT\Forms\2012\B-4832\Fdu_tsh.dgn
 J:\station AT\REV\24774

DIVISION OF HIGHWAYS
STATE OF NORTH CAROLINA


PROJECT REFERENCE NO. <i>B-4832</i>	SHEET NO. <i>EC-2</i>
ROADWAY DESIGN ENGINEER	HYDRAULICS ENGINEER

SOIL STABILIZATION TIMEFRAMES

<i>SITE DESCRIPTION</i>	<i>STABILIZATION TIME</i>	<i>TIMEFRAME EXCEPTIONS</i>
PERIMETER DIKES, SWALES, DITCHES AND SLOPES	7 DAYS	NONE
HIGH QUALITY WATER (HQW) ZONES	7 DAYS	NONE
SLOPES STEEPER THAN 3:1	7 DAYS	IF SLOPES ARE 10' OR LESS IN LENGTH AND ARE NOT STEEPER THAN 2:1, 14 DAYS ARE ALLOWED.
SLOPES 3:1 OR FLATTER	14 DAYS	7 DAYS FOR SLOPES GREATER THAN 50' IN LENGTH.
ALL OTHER AREAS WITH SLOPES FLATTER THAN 4:1	14 DAYS	NONE, EXCEPT FOR PERIMETERS AND HQW ZONES.

5/14/95

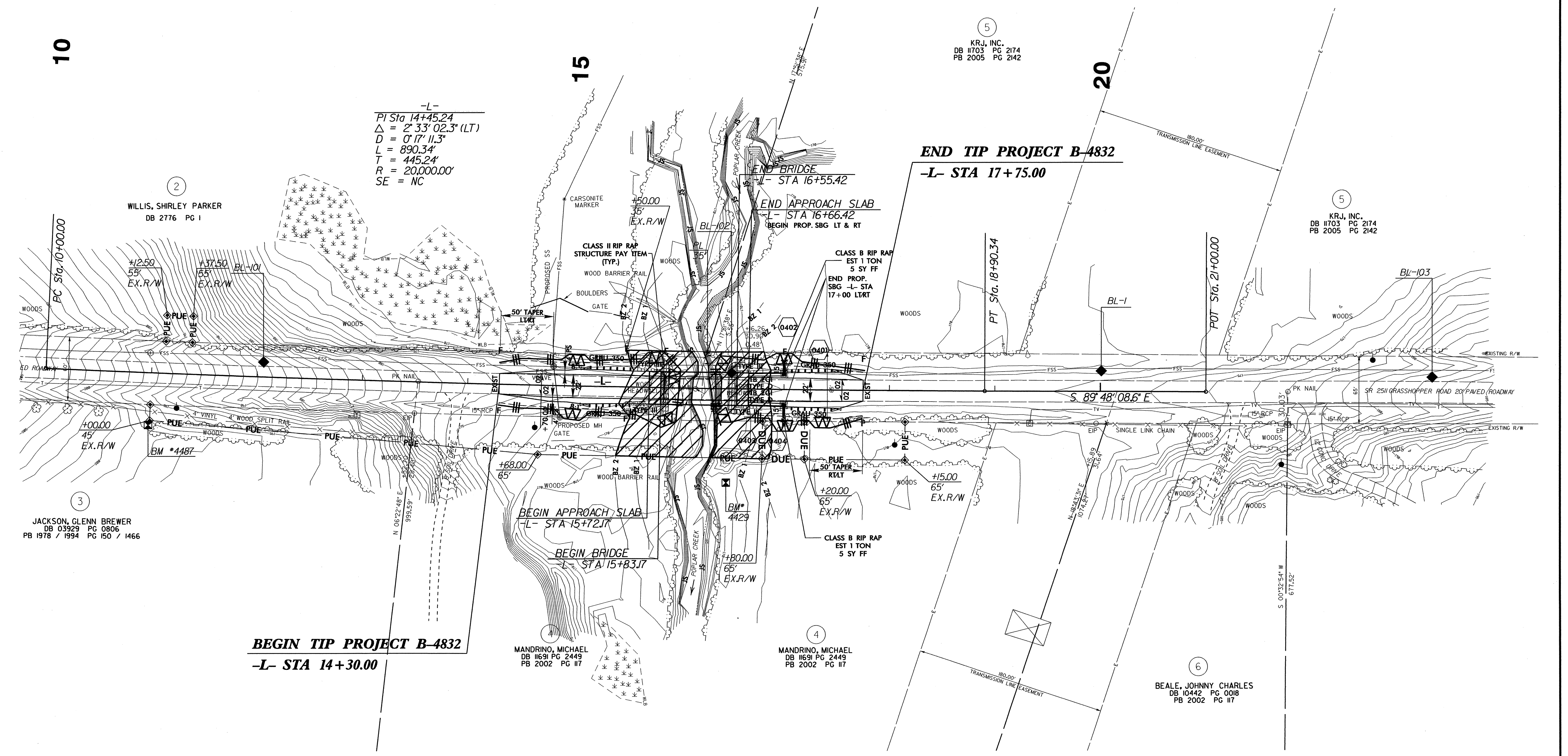
PROJECT REFERENCE NO.		SHEET NO.	
B-4832		EC-3/CONST.4	
RW SHEET NO.			
ROADWAY DESIGN ENGINEER		HYDRAULICS ENGINEER	

 ENVIRONMENTALLY SENSITIVE AREA
SEE PROJECT SPECIAL PROVISIONS

NOTE:
PLACE TEMPORARY ROCK SEDIMENT DAMS TYPE - B
AND TEMPORARY ROCK SILT CHECKS TYPE - A AT
DRAINAGE OUTLETS.

CLEARING AND GRUBBING
EROSION CONTROL FOR
CONSTRUCTION SHEET 4

NAD 83/95



10

15

20

2
WILLIS, SHIRLEY PARKER
DB 2776 PG 1

5
KRJ, INC.
DB 1703 PG 2174
PB 2005 PG 2142

5
KRJ, INC.
DB 1703 PG 2174
PB 2005 PG 2142

3
JACKSON, GLENN BREWER
DB 03929 PG 0806
PB 1978 / 1994 PG 150 / 1466

4
MANDRINO, MICHAEL
DB 1691 PG 2449
PB 2002 PG 117

4
MANDRINO, MICHAEL
DB 1691 PG 2449
PB 2002 PG 117

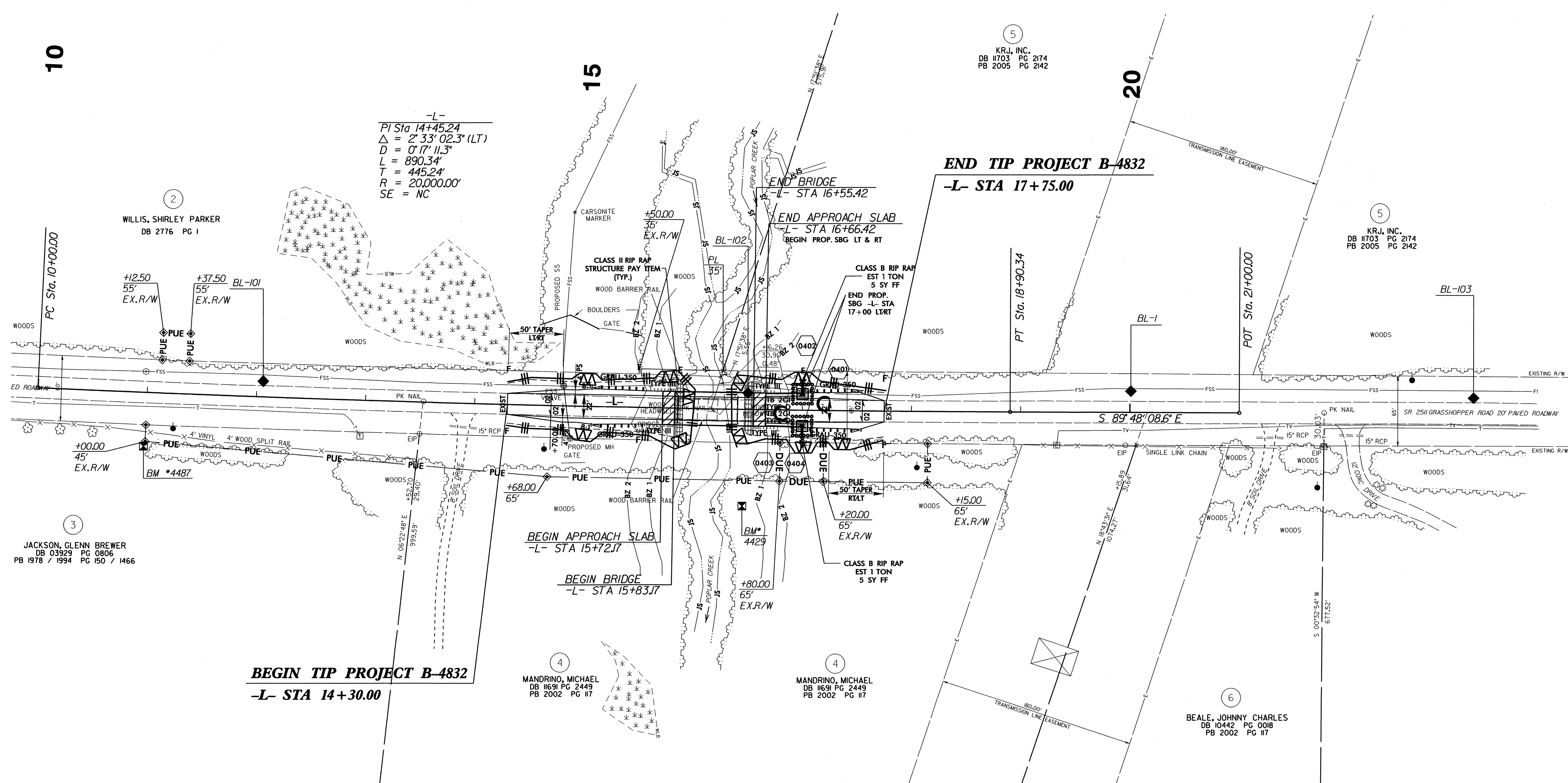
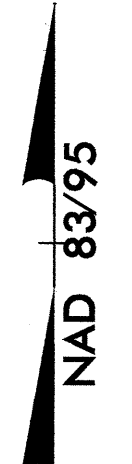
6
BEALE, JOHNNY CHARLES
DB 10442 PG 0018
PB 2002 PG 117

BEGIN TIP PROJECT B-4832
-L- STA 14+30.00

END TIP PROJECT B-4832
-L- STA 17+75.00

I5-AUC-2012 10.37
R:\Environment\B-4832-EC-pah_4.dgn
dwj
AT 11/21/12

PROJECT REFERENCE NO.	SHEET NO.
B-4832	EC-4/CONST.4
RW SHEET NO.	
ROADWAY DESIGN ENGINEER	HYDRAULICS ENGINEER



-L-
 PI Sta 14+45.24
 $\Delta = 2' 33'' 02.3''$ (LT)
 $D = 0' 17'' 11.3''$
 $L = 890.34'$
 $T = 445.24'$
 $R = 20,000.00'$
 SE = NC

WILLIS, SHIRLEY PARKER
 DB 2776 PG 1

JACKSON, GLENN BREWER
 DB 03929 PG 0806
 PB 1978 / 1994 PG 150 / 1466

MANDRINO, MICHAEL
 DB 11691 PG 2449
 PB 2002 PG 117

MANDRINO, MICHAEL
 DB 11691 PG 2449
 PB 2002 PG 117

BEALE, JOHNNY CHARLES
 DB 10442 PG 0018
 PB 2002 PG 117

KRJ, INC.
 DB 11703 PG 2174
 PB 2005 PG 2142

KRJ, INC.
 DB 11703 PG 2174
 PB 2005 PG 2142

10

15

20

END TIP PROJECT B-4832
 -L- STA 17+75.00

BEGIN TIP PROJECT B-4832
 -L- STA 14+30.00

BEGIN APPROACH SLAB
 -L- STA 15+72.17

BEGIN BRIDGE
 -L- STA 15+83.17

END BRIDGE
 -L- STA 16+55.42

END APPROACH SLAB
 -L- STA 16+66.42

PC Sta. 10+00.00

+12.50
 55' EX.R/W

+37.50
 55' EX.R/W

+50.00
 35' EX.R/W

END PROP
 SBG -L- STA
 17+00 LTRT

PT Sta. 18+90.34

POT Sta. 21+00.00

+00.00
 45' EX.R/W

+68.00
 65'

+20.00
 65' EX.R/W

+15.00
 65' EX.R/W

+80.00
 65' EX.R/W

5/14/95
 15-AUG-2012 10:37
 R:\Environment\B-4832-EC-psh_4.dgn
 J:\Judson