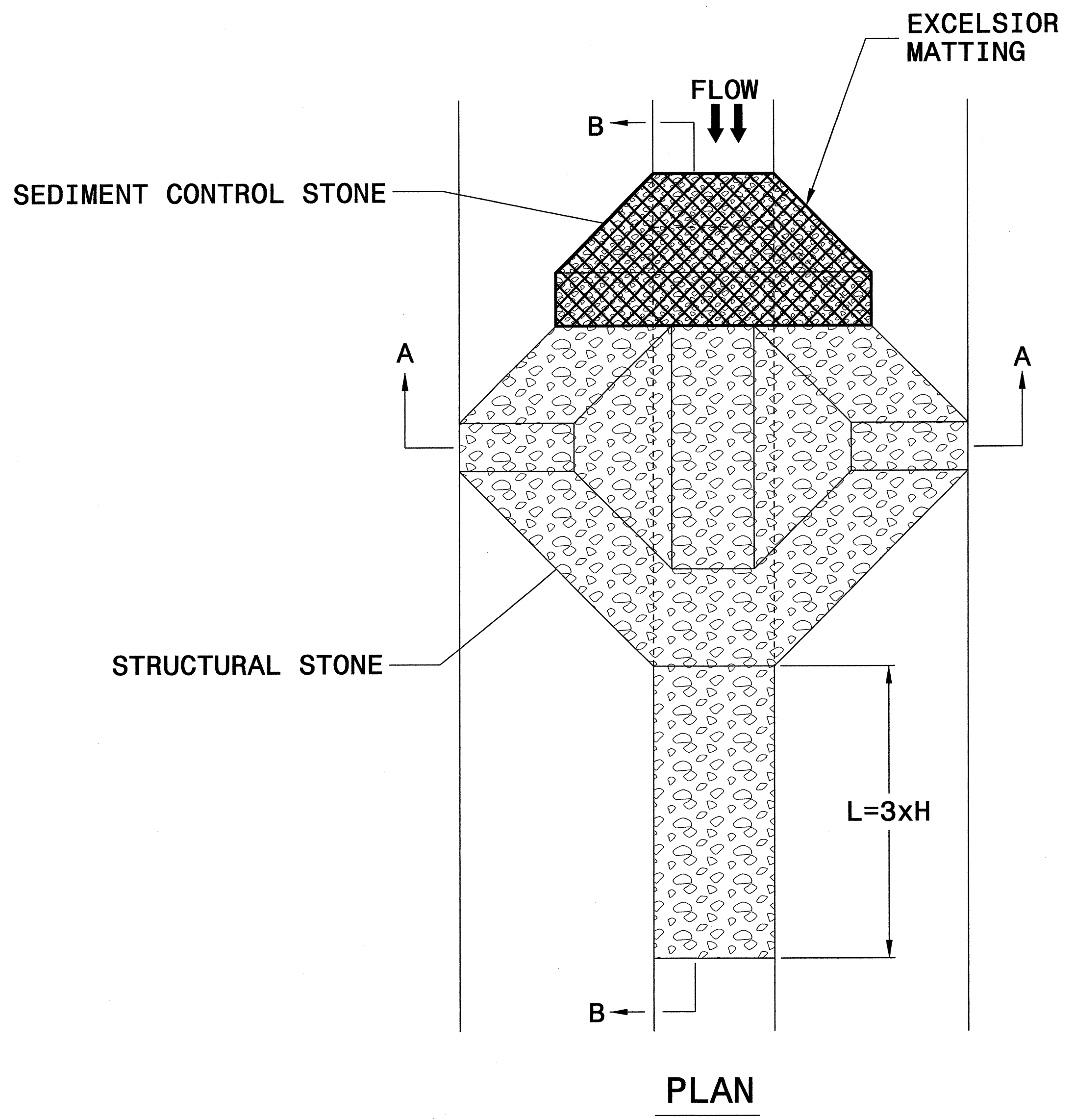




PROJECT REFERENCE NO. B-4753	SHEET NO. EC-02
RW SHEET NO.	
ROADWAY DESIGN ENGINEER	HYDRAULICS ENGINEER

# TEMPORARY ROCK SILT CHECK TYPE 'A' WITH EXCELSIOR MATTING AND POLYACRYLAMIDE (PAM)

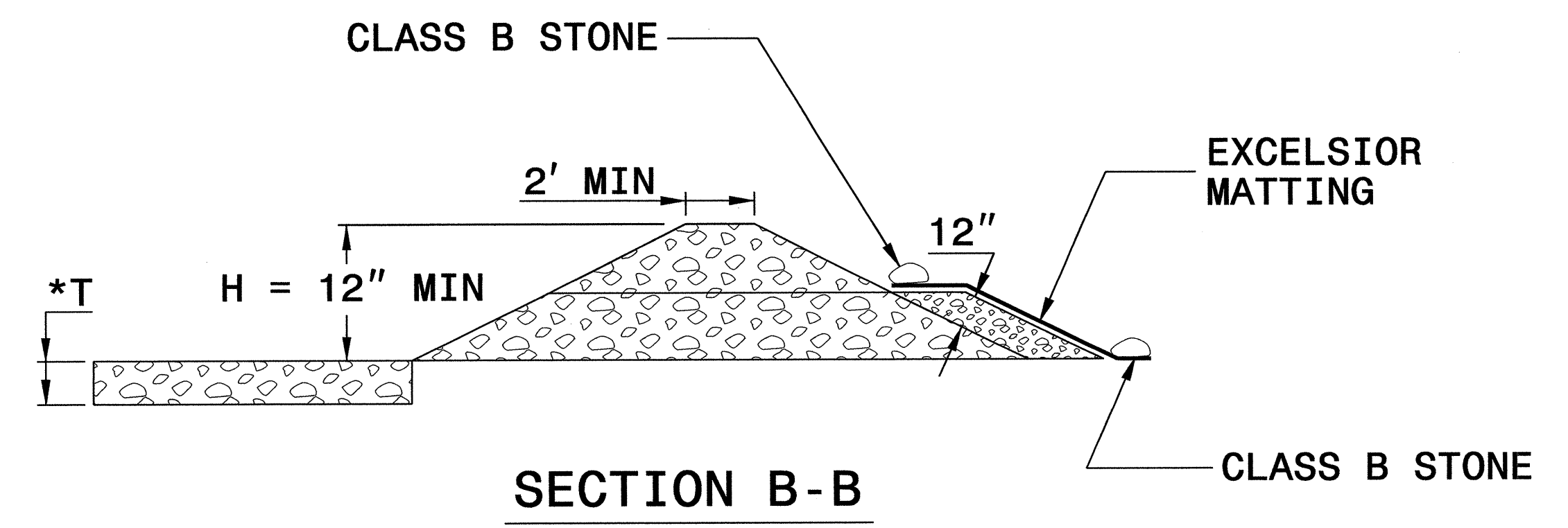
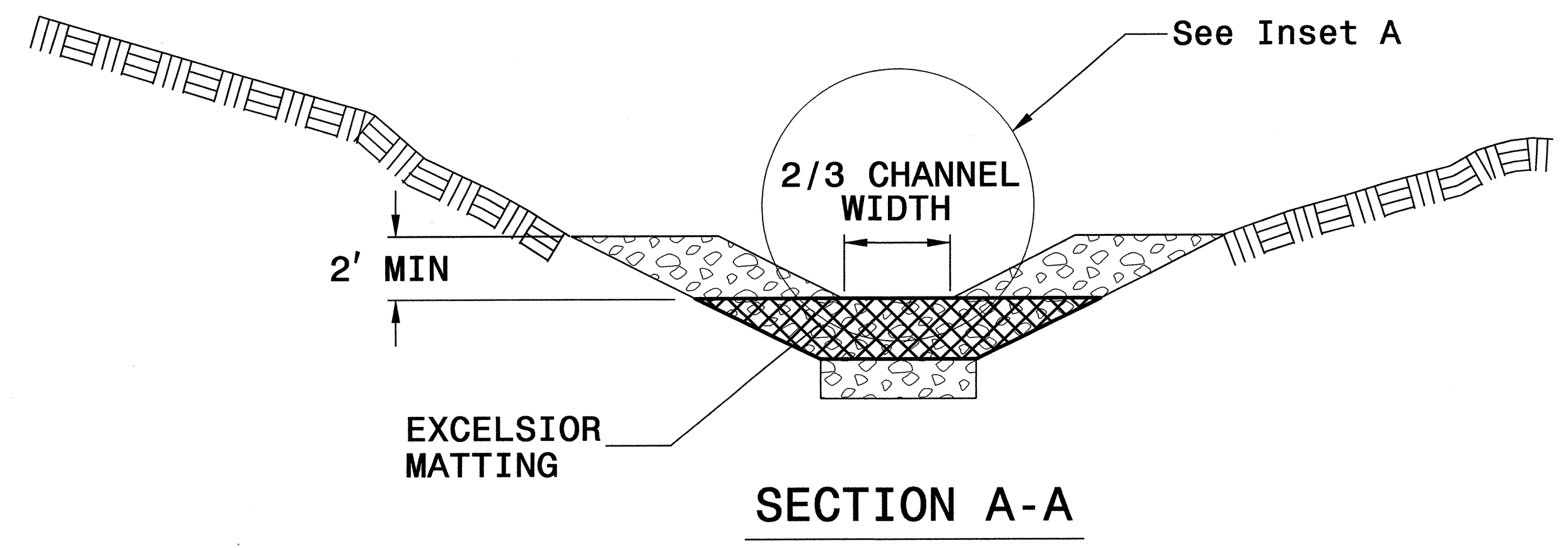
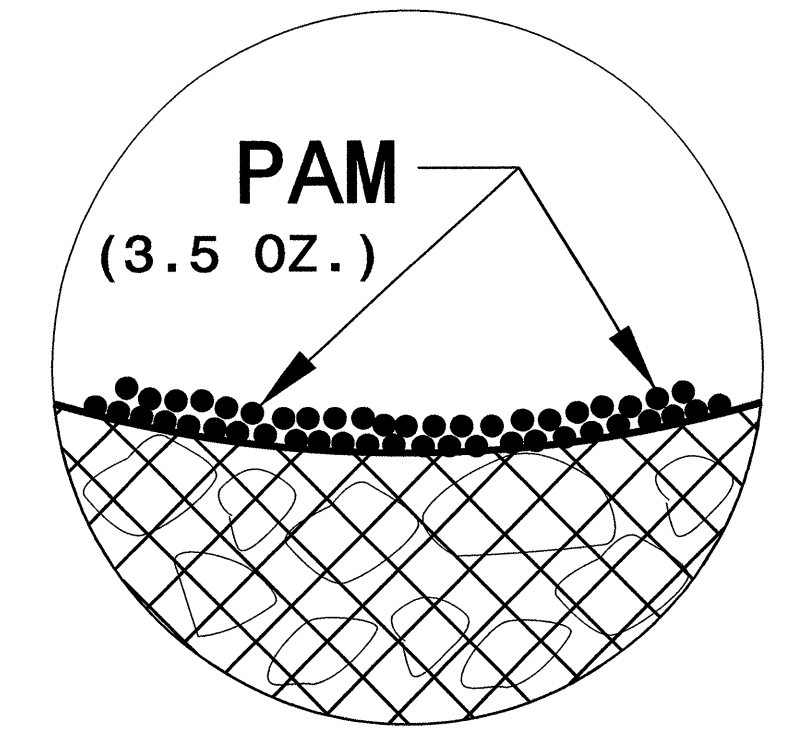


## NOTES

USE EXCELSIOR FOR MATTING MATERIAL AND ANCHOR MATTING SECTION AT TOP AND BOTTOM WITH CLASS B STONE.

PRIOR TO POLYACRYLAMIDE (PAM) APPLICATION, OBTAIN A SOIL SAMPLE FROM PROJECT LOCATION, AND FROM OFFSITE MATERIAL, AND ANALYZE FOR APPROPRIATE PAM FLOCCULANT TO BE APPLIED TO EACH ROCK SILT CHECK.

INITIALLY APPLY 3.5 OUNCES OF POLYACRYLAMIDE (PAM) TO TOP OF MATTING SECTION AND AFTER EVERY RAINFALL EVENT THAT EQUALS OR EXCEEDS 0.50 INCHES.



\*T = 12" MIN., 18" MAX.

NOT TO SCALE





DIVISION OF HIGHWAYS  
STATE OF NORTH CAROLINA

---



---

PROJECT REFERENCE NO. <i>B-4753</i>	SHEET NO. <i>EC-03A</i>
ROADWAY DESIGN ENGINEER	HYDRAULICS ENGINEER

# ***SOIL STABILIZATION TIMEFRAMES***

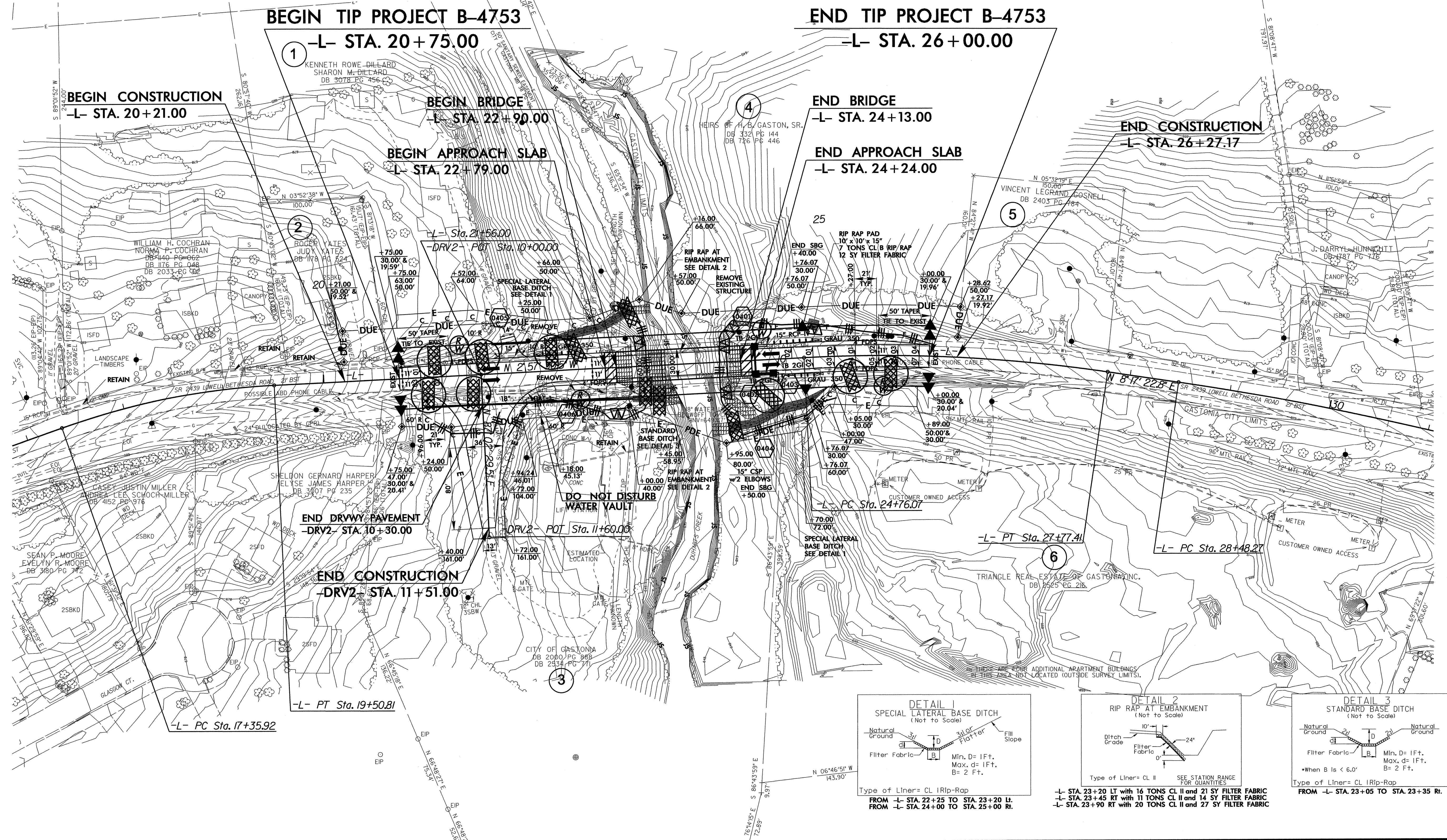
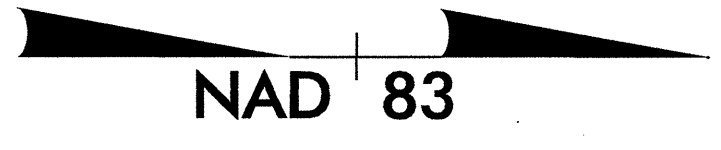
<i>SITE DESCRIPTION</i>	<i>STABILIZATION TIME</i>	<i>TIMEFRAME EXCEPTIONS</i>
PERIMETER DIKES, SWALES, DITCHES AND SLOPES	7 DAYS	NONE
HIGH QUALITY WATER (HQW) ZONES	7 DAYS	NONE
SLOPES STEEPER THAN 3:1	7 DAYS	IF SLOPES ARE 10' OR LESS IN LENGTH AND ARE NOT STEEPER THAN 2:1, 14 DAYS ARE ALLOWED.
SLOPES 3:1 OR FLATTER	14 DAYS	7 DAYS FOR SLOPES GREATER THAN 50' IN LENGTH.
ALL OTHER AREAS WITH SLOPES FLATTER THAN 4:1	14 DAYS	NONE, EXCEPT FOR PERIMETERS AND HQW ZONES.

PROJECT REFERENCE NO.		SHEET NO.	
B-4753		EC-04/CONST.04	
RW SHEET NO.			
ROADWAY DESIGN ENGINEER		HYDRAULICS ENGINEER	

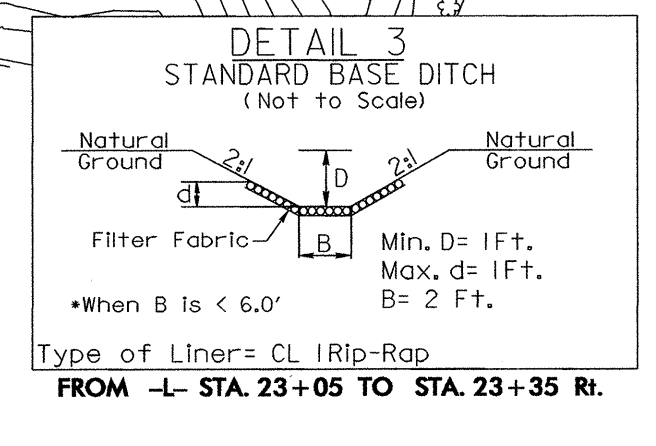
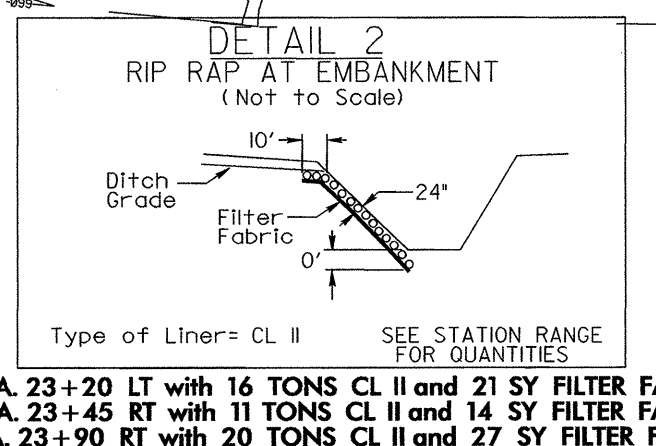
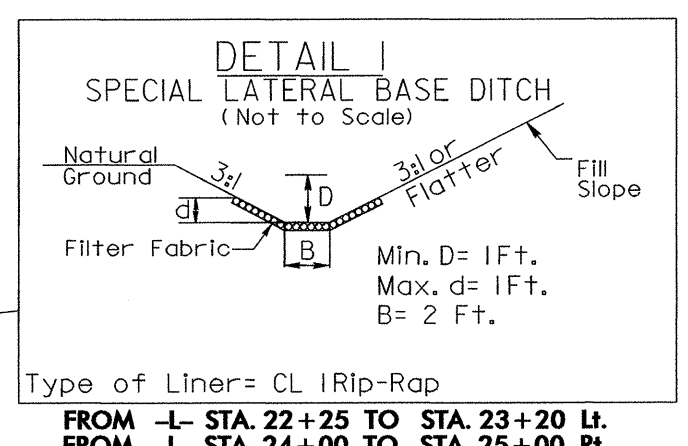
NOTE:  
UTILIZE SPECIAL STILLING BASIN AS STILLING BASIN WHERE APPLICABLE.

NOTE:  
PLACE TEMPORARY ROCK SEDIMENT DAMS TYPE - B AND TEMPORARY ROCK SILT CHECKS TYPE - A AT DRAINAGE OUTLETS.

CLEARING AND GRUBBING EROSION CONTROL FOR CONSTRUCTION SHEET 04



REVISIONS



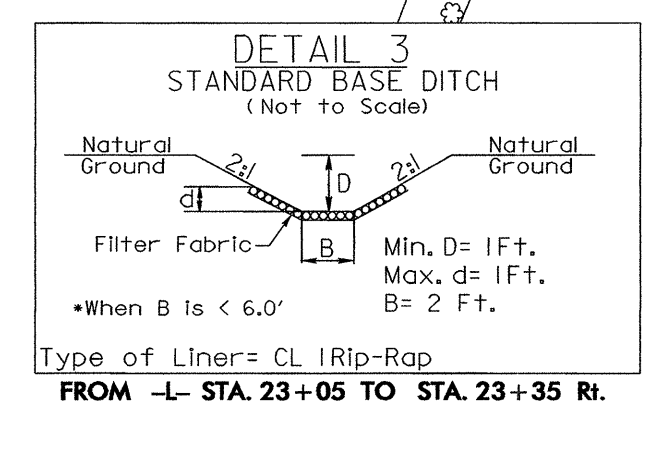
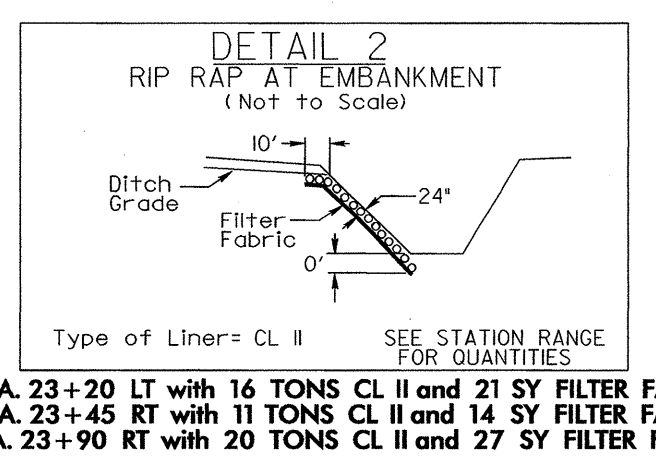
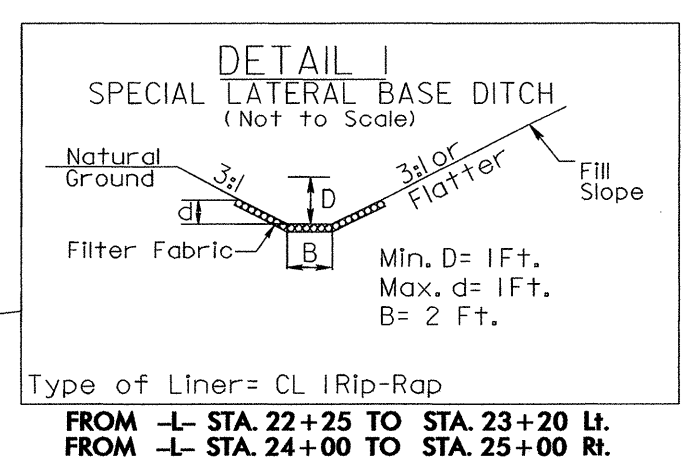
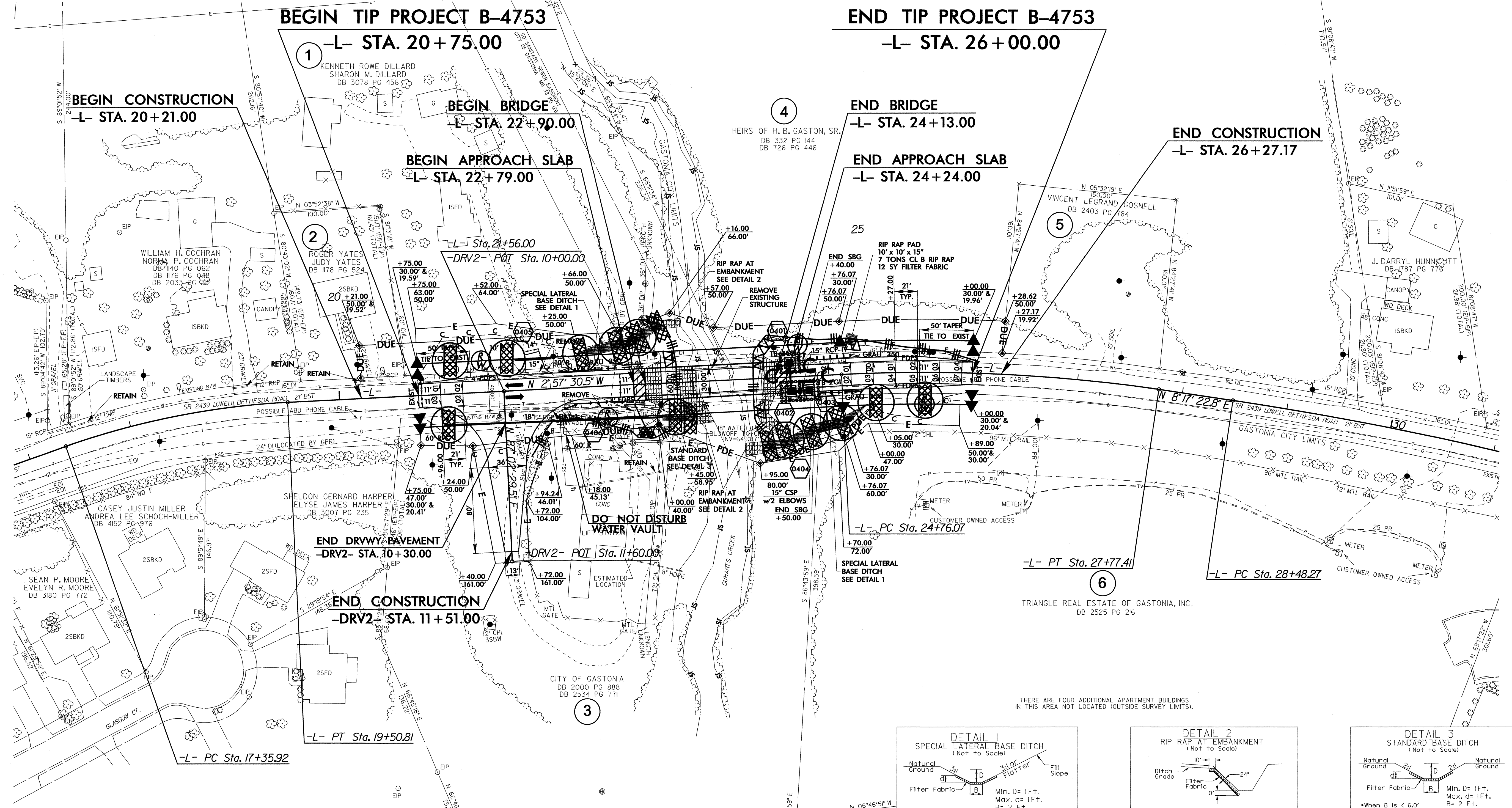
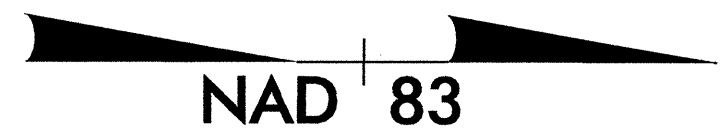
8/17/99

30-DEC-2011 15:02  
R:\Environmental\Design\B-4753.EC-psh.dgn  
REVISIONS AT RENEW24770



PROJECT REFERENCE NO.	SHEET NO.
B-4753	EC-05/CONST.04
RW SHEET NO.	
ROADWAY DESIGN ENGINEER	HYDRAULICS ENGINEER

NOTE: UTILIZE SPECIAL STILLING BASIN AS STILLING BASIN WHERE APPLICABLE.



THERE ARE FOUR ADDITIONAL APARTMENT BUILDINGS IN THIS AREA NOT LOCATED (OUTSIDE SURVEY LIMITS).

REVISIONS

8/17/99  
30-DEC-2011 15:02  
R:\Environmental\B-4753-EC.psh.dgn  
L:\Projects\B-4753-EC\Drawings\B-4753-EC-05-CONST.04.dwg  
L:\Projects\B-4753-EC\Drawings\B-4753-EC-05-CONST.04.dwg