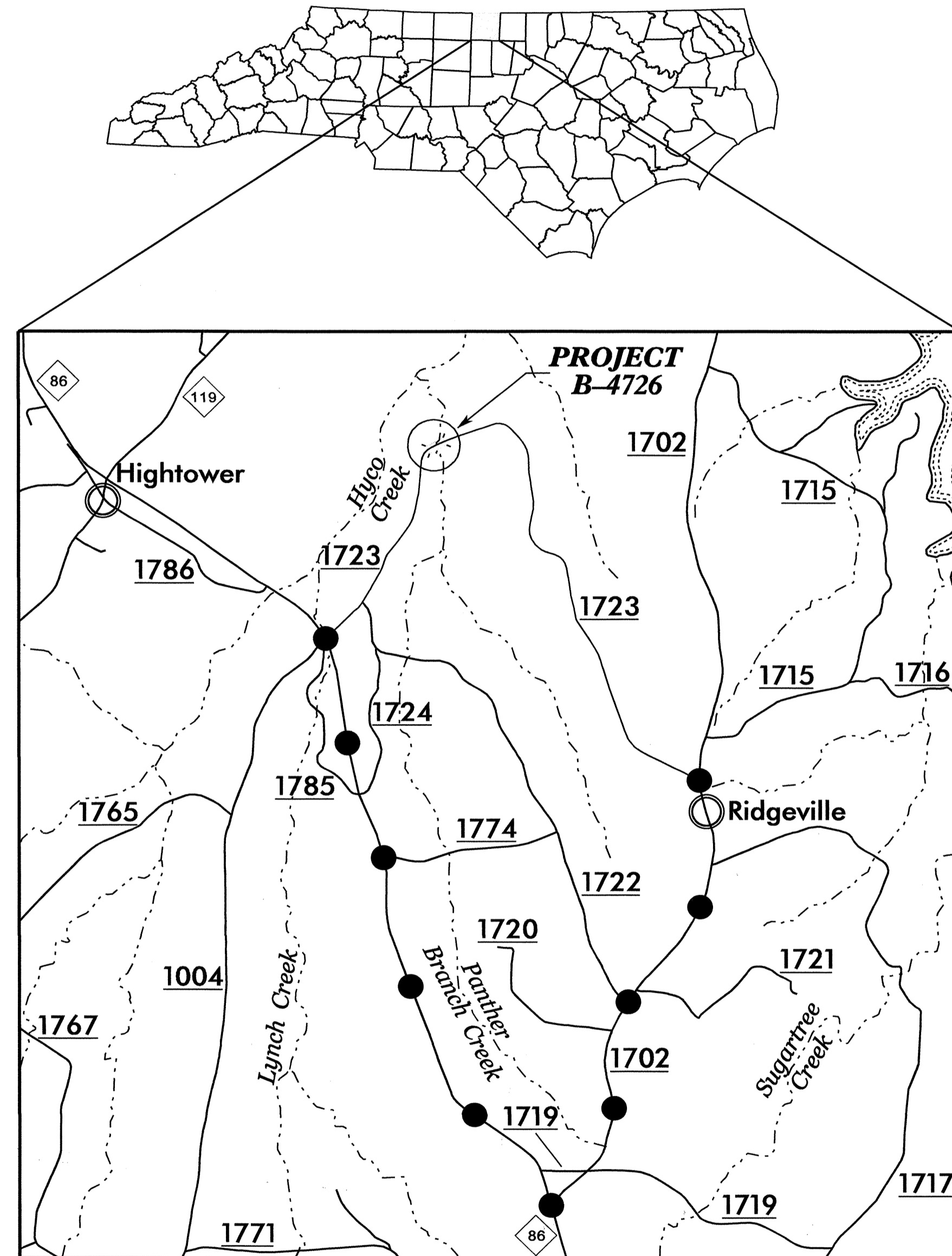


STATE OF NORTH CAROLINA
DIVISION OF HIGHWAYS

TRANSPORTATION MANAGEMENT PLAN

CASWELL COUNTY



INDEX OF SHEETS

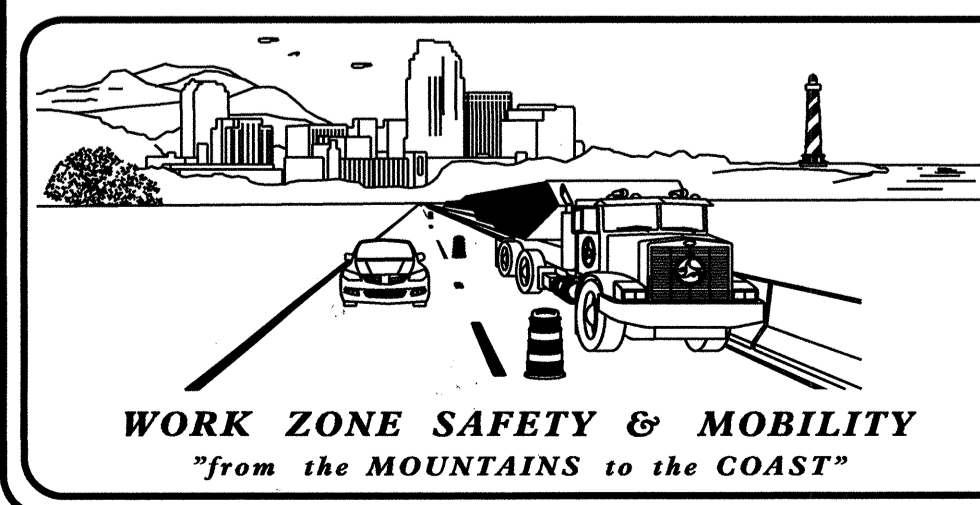
SHEET NO.	TITLE
TMP-1	TITLE SHEET AND INDEX OF SHEETS
TMP-1A	LIST OF APPLICABLE ROADWAY STANDARD DRAWINGS AND LEGEND
TMP-1B	TRANSPORTATION OPERATIONS PLAN: (MANAGEMENT STRATEGIES, GENERAL NOTES AND PHASING)
TMP-2	OFF-SITE DETOUR ROUTE AND BARRICADE PLACEMENT
SD-1	SPECIAL SIGN DESIGN

SHEET NO.
TMP-1

B-4726

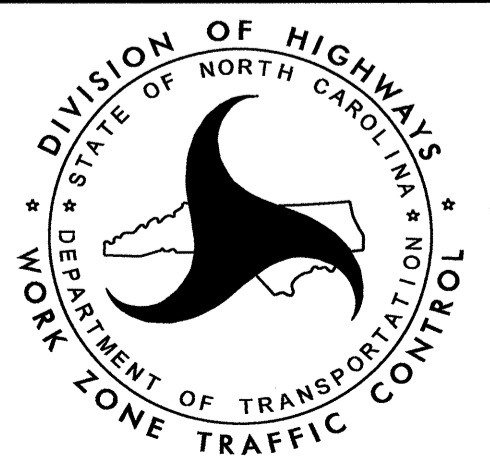
TIP PROJECT:

30-AUG-2012 08:17
\\dot\dfs\oof\01\Proj\TIP\Projects-B\B4726\Traffic\TrafficControl\TCP\B-4726.TC.TCP.dgn
dkennedy AT 12264741



N.C.D.O.T. WORK ZONE TRAFFIC CONTROL
1561 MAIL SERVICE CENTER (MSC) RALEIGH, NC 27699-1561
750 N. GREENFIELD PARKWAY, GARNER, NC 27529 (DELIVERY)
PHONE: (919) 773-2800 FAX: (919) 771-2745

J. S. BOURNE, P.E. STATE TRAFFIC MANAGEMENT ENGINEER
JOSEPH ISHAK, P.E. TRAFFIC CONTROL PROJECT ENGINEER
MICHAEL STEELMAN TRAFFIC CONTROL PROJECT DESIGN ENGINEER
DURWOOD KENNEDY TRAFFIC CONTROL DESIGN ENGINEER



APPROVED: *J. Stuart Bourne*
DATE: 8/30/12

SEAL

ROADWAY STANDARD DRAWINGS

THE FOLLOWING ROADWAY STANDARDS AS SHOWN IN "ROADWAY STANDARD DRAWINGS" - PROJECT SERVICES UNIT - N.C. DEPARTMENT OF TRANSPORTATION - RALEIGH, N.C., DATED JANUARY 2012 ARE APPLICABLE TO THIS PROJECT AND BY REFERENCE HEREBY ARE CONSIDERED A PART OF THESE PLANS:

STD. NO.	TITLE
1101.03	TEMPORARY ROAD CLOSURES
1101.05	WORK ZONE VEHICLE ACCESS
1101.11	TRAFFIC CONTROL DESIGN TABLES
1110.01	STATIONARY WORK ZONE SIGNS
1145.01	BARRICADES

LEGEND

GENERAL

- DIRECTION OF TRAFFIC FLOW
- EXIST. PVMT.
- NORTH ARROW
- PROPOSED PVMT.
- WORK AREA

TRAFFIC CONTROL DEVICES

- BARRICADE (TYPE III)
- CONE
- DRUM SKINNY DRUM TUBULAR MARKER
- FLASHING ARROW PANEL (TYPE C)
- FLAGGER
- TRUCK MOUNTED IMPACT ATTENUATOR (TMIA)
- CHANGEABLE MESSAGE SIGN

TEMPORARY SIGNING

- PORTABLE SIGN
- STATIONARY SIGN
- STATIONARY OR PORTABLE SIGN

30-AUG-2012 08:17
 \\dot\dfsroot\on\Proj\TIP\Projects-B\B4726\Traffic\TrafficControl\TCP\B-4726-TC_TCP.dgn
 drKennedy AT TE26474

APPROVED: DATE: 8/30/12 		ROADWAY STANDARD DRAWINGS & LEGEND
------------------------------	--	---------------------------------------------------

MANAGEMENT STRATEGIES

- DURING REPLACEMENT OF THE EXISTING BRIDGE No.5 OVER PANTHER BRANCH CREEK, SR 1723 (JOHN OAKLEY RD.) WILL BE CLOSED TO THROUGH TRAFFIC FROM -L- STA.19+00+/- TO -L- STA.23+00+/- . THE JOHN OAKLEY RD. TRAFFIC WILL BE DETOURED OFF-SITE VIA SR 1723 TO NC-86 TO SR 1702 BACK TO SR 1723.
- ACCESS TO ALL RESIDENCES MUST BE PROVIDED AT ALL TIMES WITHIN THE PROJECT LIMITS.

GENERAL NOTES

CHANGES MAY BE REQUIRED WHEN PHYSICAL DIMENSIONS IN THE DETAIL DRAWINGS, STANDARD DETAILS AND ROADWAY DETAILS ARE NOT ATTAINABLE TO MEET FIELD CONDITIONS, OR RESULT IN DUPLICATE, OR UNDESIRED OVERLAPPING OF DEVICES. MODIFICATION MAY INCLUDE: MOVING, SUPPLEMENTING, COVERING OR REMOVAL OF DEVICES, AS DIRECTED BY THE ENGINEER.

THE FOLLOWING GENERAL NOTES APPLY AT ALL TIMES FOR THE DURATION OF THE CONSTRUCTION PROJECT, EXCEPT WHEN OTHERWISE NOTED IN THE PLAN, OR DIRECTED BY THE ENGINEER.

TRAFFIC PATTERN ALTERATIONS

- A) NOTIFY THE ENGINEER TWENTY ONE (21) CALENDAR DAYS PRIOR TO ANY TRAFFIC PATTERN ALTERATION.

SIGNING

- B) PROVIDE PERMANENT SIGNING.
- C) PROVIDE SIGNING AND DEVICES REQUIRED TO CLOSE THE ROAD ACCORDING TO THE ROADWAY STANDARD DRAWINGS AND TRAFFIC MANAGEMENT PLAN.

PROVIDE SIGNING REQUIRED FOR THE OFF-SITE DETOUR ROUTE AS SHOWN IN THE TRAFFIC MANAGEMENT PLAN.

- D) COVER OR REMOVE ALL SIGNS AND DEVICES REQUIRED TO CLOSE THE ROAD WHEN ROAD CLOSURE IS NOT IN OPERATION.

COVER OR REMOVE ALL SIGNS REQUIRED FOR THE OFF-SITE DETOUR WHEN THE DETOUR IS NOT IN OPERATION.

- E) ENSURE ALL NECESSARY SIGNING IS IN PLACE PRIOR TO ALTERING ANY TRAFFIC PATTERN.

TRAFFIC CONTROL DEVICES

- F) PLACE TYPE III BARRICADES, WITH "ROAD CLOSED" SIGN R11-2 ATTACHED, OF SUFFICIENT LENGTH TO CLOSE ENTIRE ROADWAY.

PAVEMENT MARKINGS AND MARKERS

- G) INSTALL PAVEMENT MARKINGS AND PAVEMENT MARKERS ON THE FINAL SURFACE AS SHOWN IN THE PAVEMENT MARKING PLAN.

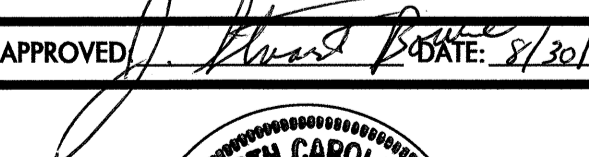
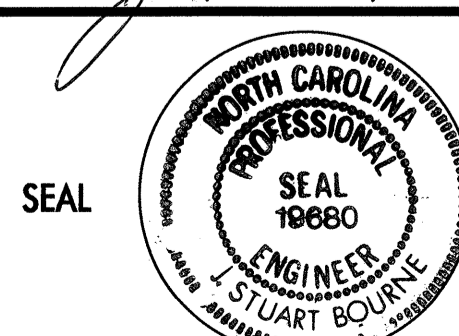
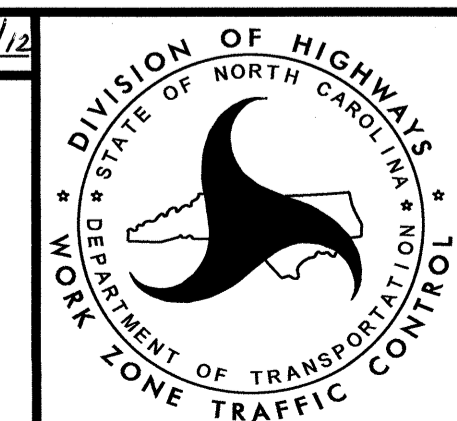
- H) TIE PROPOSED PAVEMENT MARKING LINES TO EXISTING PAVEMENT MARKING LINES.

PHASING

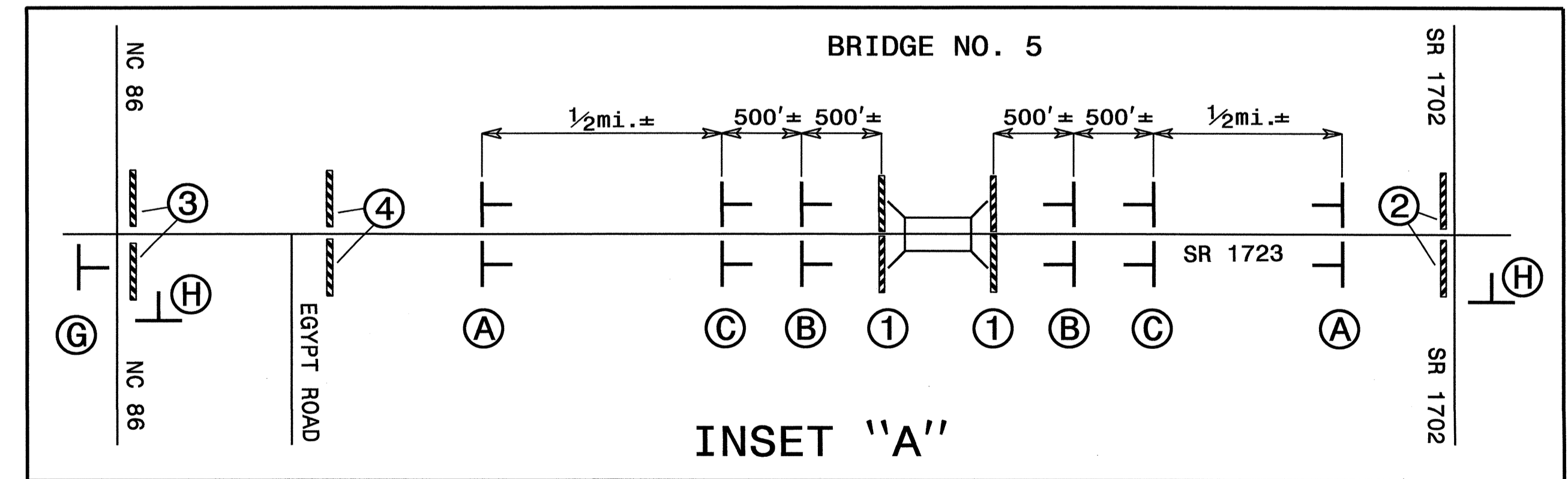
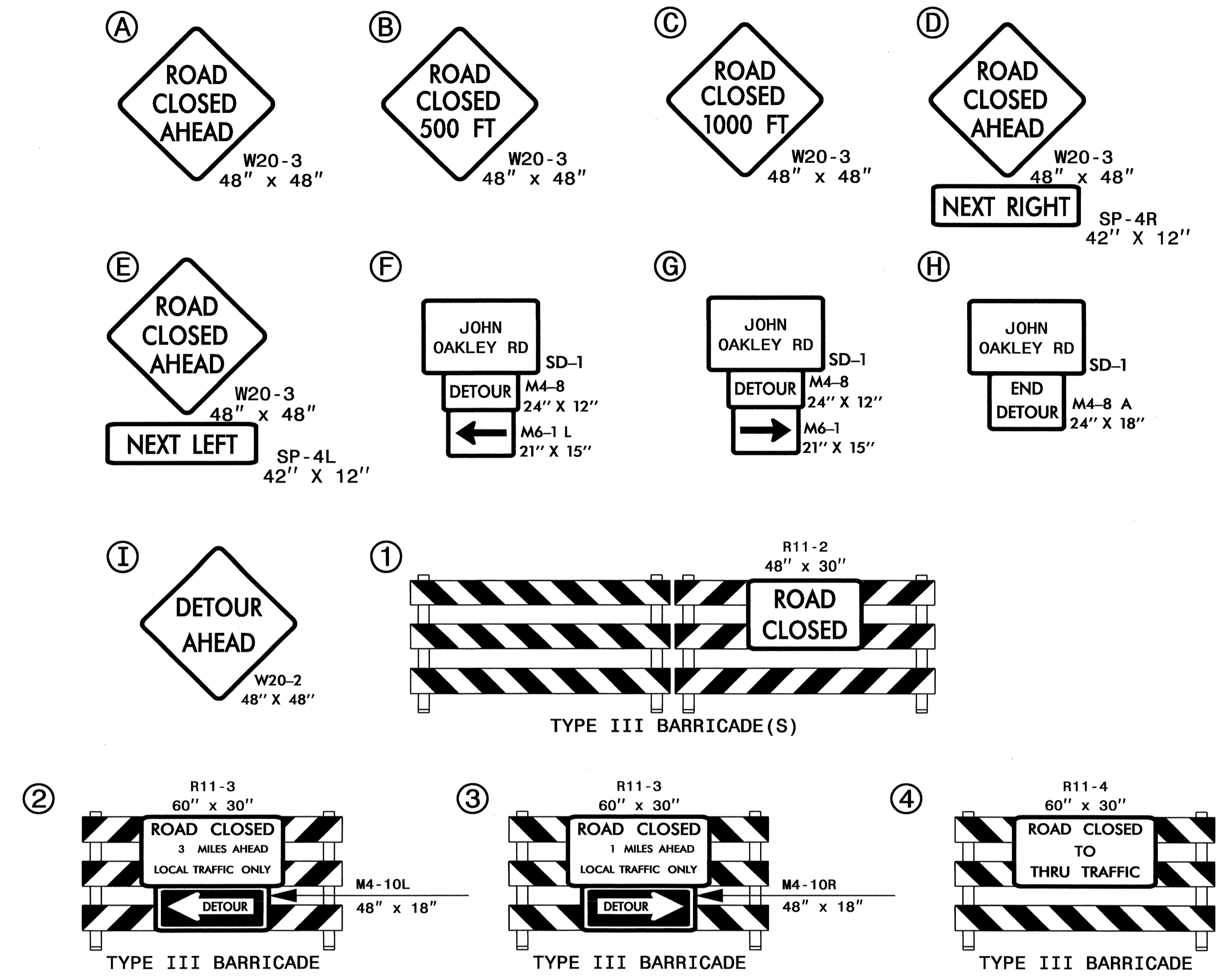
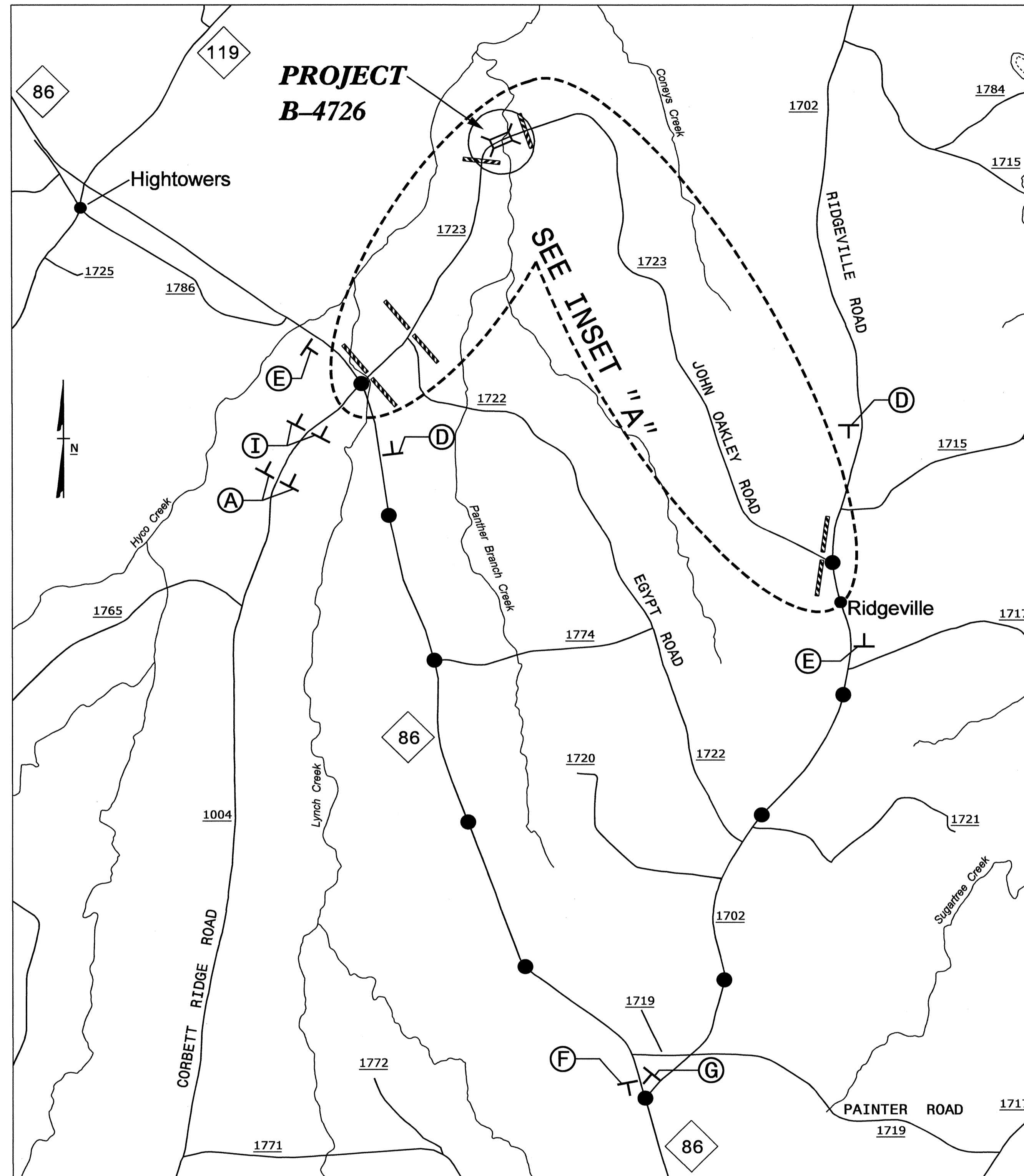
STEP 1:
USING RSD 1101.03, SHEET 1 OF 9, SHEETS TMP-2 AND SD-1, INSTALL ROAD CLOSURE AND DETOUR SIGNS. PLACE TYPE III BARRICADES TO CLOSE SR 1723 (JOHN OAKLEY RD.) TO THROUGH TRAFFIC, AND DETOUR TRAFFIC OFF-SITE.

- STEP 2:**
AWAY FROM TRAFFIC, COMPLETE THE FOLLOWING:
SEE ROADWAY AND STRUCTURE PLANS.
- 1) REMOVE EXISTING STRUCTURE No.5, AND CONSTRUCT THE PROPOSED STRUCTURE.
 - 2) CONSTRUCT PROPOSED ROADWAY UP THROUGH THE FINAL LAYER OF SURFACE COURSE FROM -L- STA.19+00+/- TO -L- STA.23+00+/- .
 - 3) USING FINAL PAVEMENT MARKING PLAN, PLACE FINAL PAVEMENT MARKINGS AND MARKERS FROM -L- STA.19+00+/- TO -L- STA.23+00+/- , AND TIE INTO EXISTING PAVEMENT MARKINGS.

STEP 3:
REMOVE ALL ROAD CLOSURE SIGNING/DEVICES AND DETOUR SIGNING. OPEN SR 1723 (JOHN OAKLEY RD.) TO PROPOSED TRAFFIC PATTERN.

APPROVED:  DATE: 8/30/12 		<h3 style="margin: 0;">TRANSPORTATION OPERATION PLAN</h3>
--------------------------------------------------------------------------------------------------------------------------------------------------------------------------------------------------------	---------------------------------------------------------------------------------------	---------------------------------------------------------------

VICINITY MAP: CASWELL COUNTY



OFFSITE DETOUR

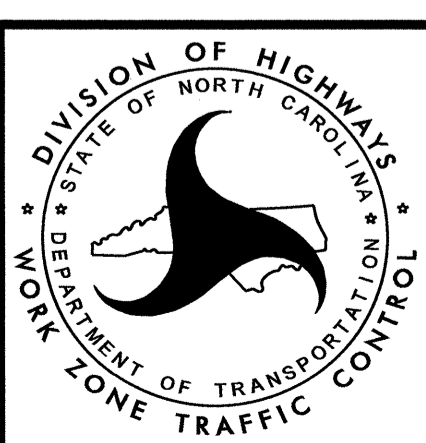
OFFSITE DETOUR ROUTE:
FROM SR 1723 TO NC-86 TO SR 1702 TO SR 1723

- NOTE(S):**
- 1) REFER TO SHEET SD-1 FOR SIGN DESIGN.
 - 2) REFER TO STANDARD RSD 1101.03, SHEET 1 OF 9, FOR ROAD CLOSURE SIGN DISTANCES AND APPLICABLE NOTES.
 - 3) DETOUR SIGN LOCATIONS ARE APPROX.; PLACE PER ENGINEER'S DIRECTION.

APPROVED: *[Signature]* DATE: 8/20/12

SEAL

NORTH CAROLINA PROFESSIONAL ENGINEER
SEAL 19680
STUART BOURNE



OFFSITE DETOUR AND BARRICADE PLACEMENT

30-AUG-2012 08:12
\\dot\cfsr\001\01\p\c\1\TIP\Projects-B\B4726\TrafficControl\TCP\B-4726-TC.TCP-2.dgn
G.Kennedy AT 12264741