

T.I.P. NO.	SHEET NO.
B-4736	UO-1

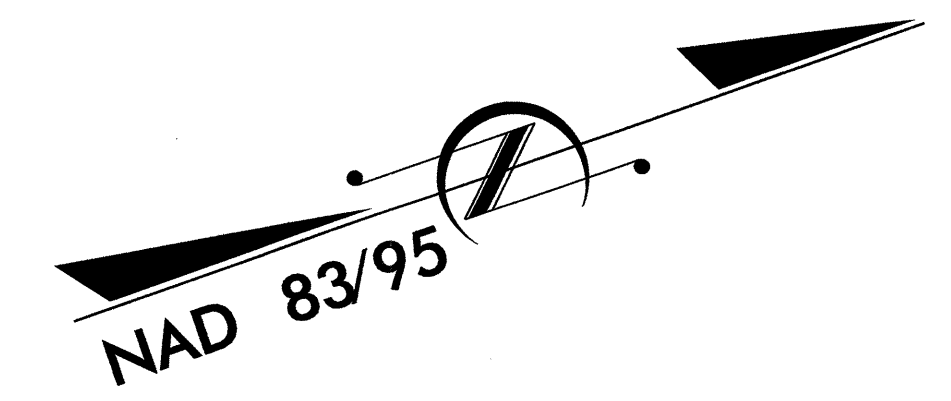
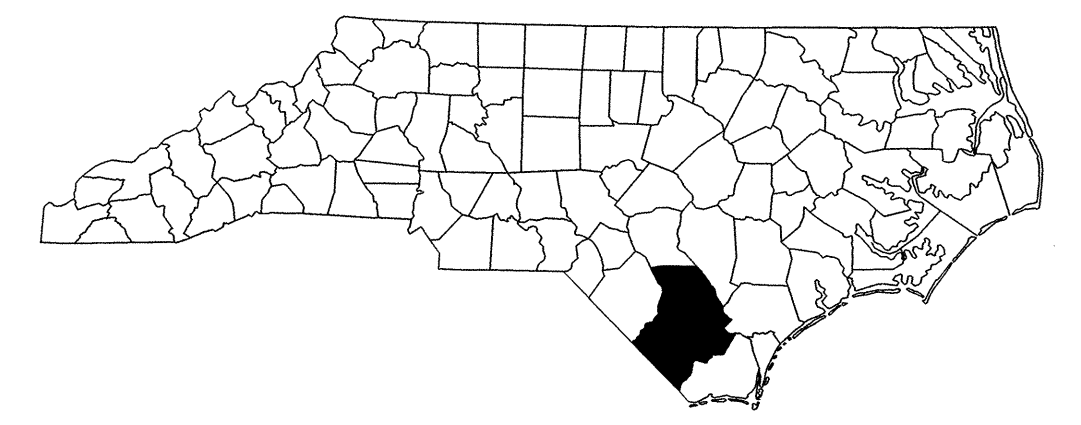
STATE OF NORTH CAROLINA
DIVISION OF HIGHWAYS

**UTILITIES BY OTHERS PLANS
BLADEN-COLUMBUS COUNTY**

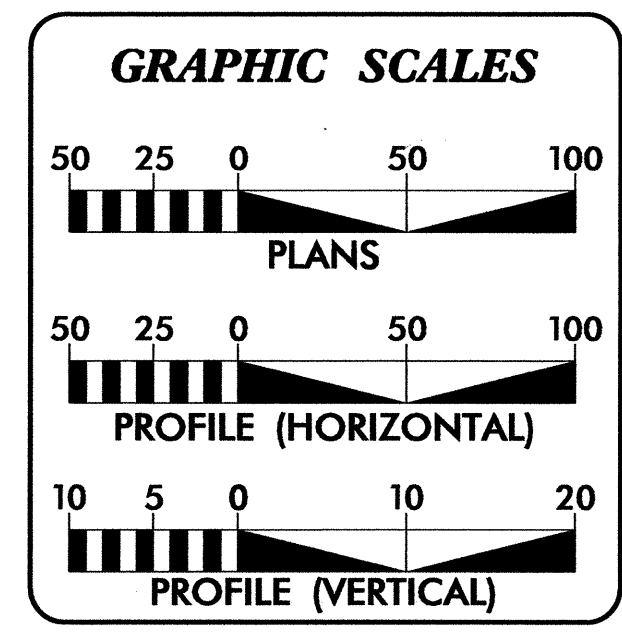
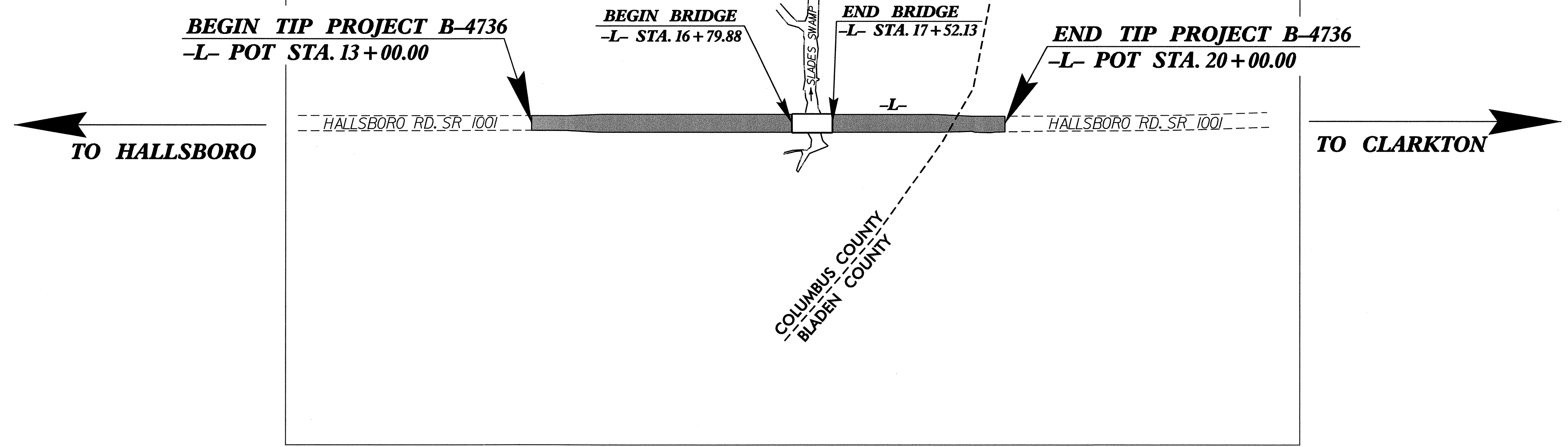
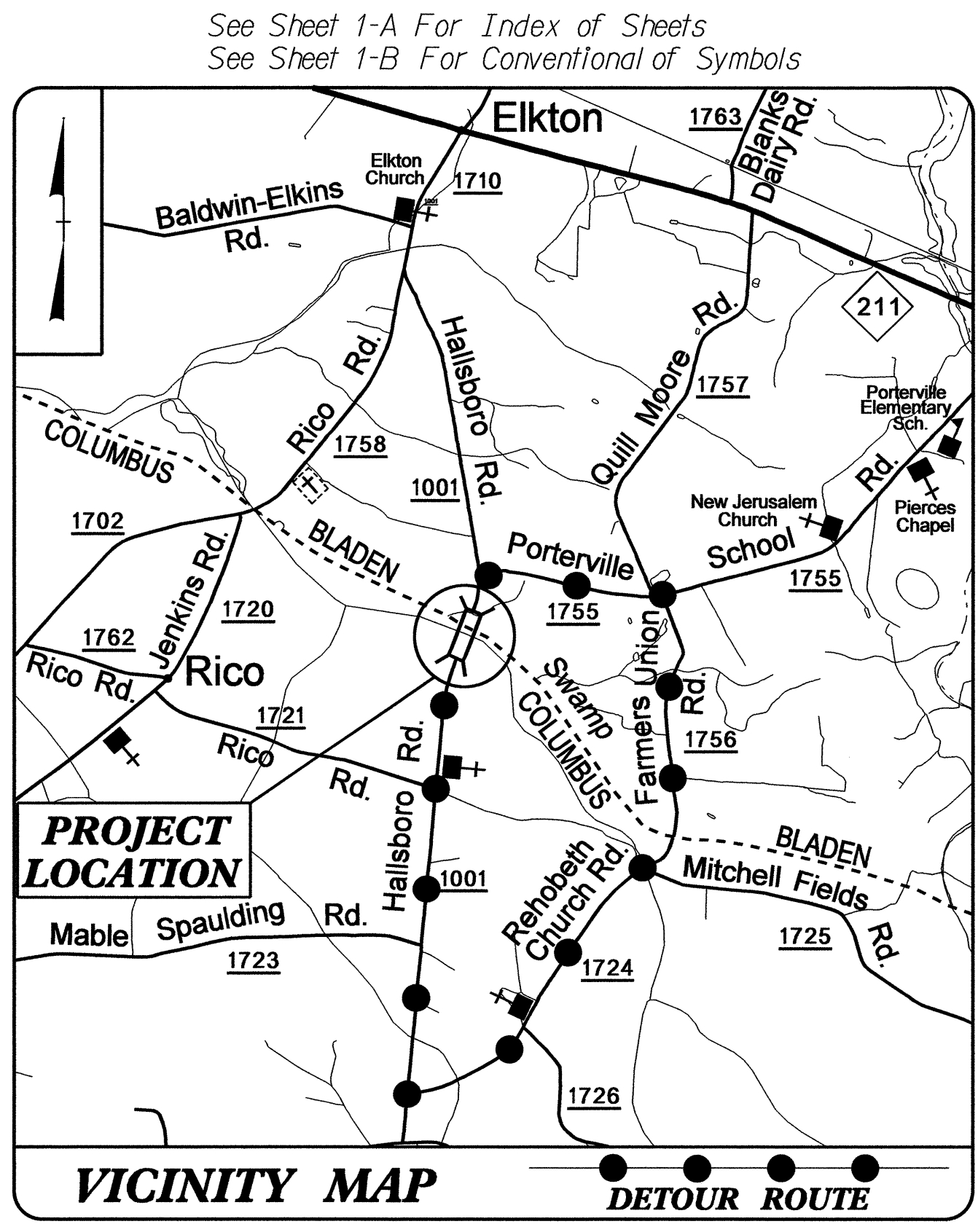
LOCATION: BRIDGE NO. 233 ON SR 1001 (HALLSBORO RD.0)

TYPE OF WORK: POWER AND TELEPHONE

4
(UO-2)



TIP PROJECT: B-4736



INDEX OF SHEETS	
SHEET NO.	DESCRIPTION
UO-1	TITLE SHEET
UO-2	UTILITY BY OTHERS PLAN SHEET

UTILITY OWNERS ON PROJECT
(1) POWER - BRUNSWICK ELECTRIC EMC
(2) TELEPHONE - STAR TELEPHONE MEMBERSHIP

PREPARED IN THE OFFICE OF:
**DIVISION OF HIGHWAYS
UTILITIES UNIT
UTILITIES ENGINEERING**

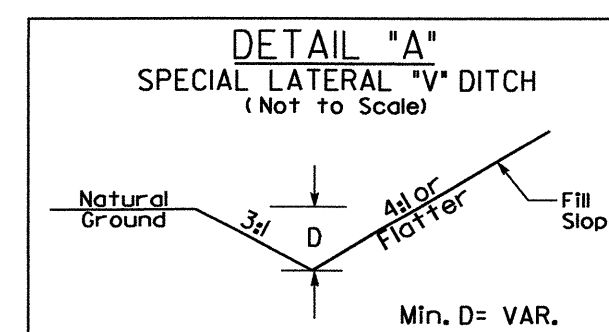
1591 MAIL SERVICES CENTER
RALEIGH NC 27699-1591
PHONE (919) 707-6690
FAX (919) 250-4151

<u>Roger Worthington, P.E.</u>	UTILITIES SECTION ENGINEER
<u>Corey Bousquet, P.E.</u>	UTILITIES SQUAD LEADER PROJECT ENGINEER
<u>Mariko Hafeez</u>	UTILITIES PROJECT DESIGNER

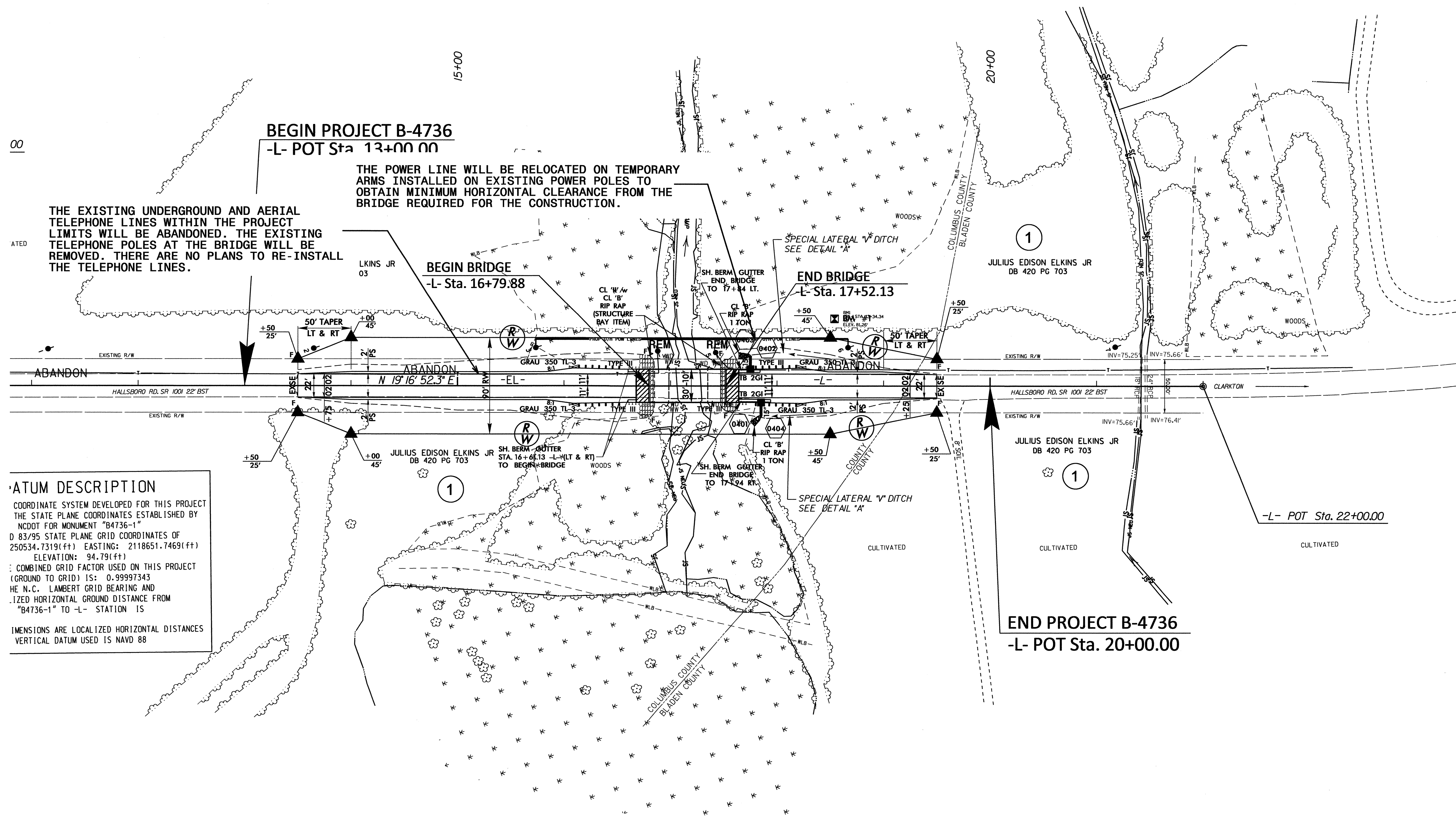
17-JUL-2012 2:04:17 R:\UTILITIES\RDY_UH\Proj\B-4736-Ut_UO1sh.dgn \$\$\$USERNAME\$\$\$

UTILITIES BY OTHERS

NOTE:
ALL PROPOSED UTILITY WORK
SHOWN ON THIS SHEET WILL
BE DONE BY OTHERS



FROM STA. 17+65 LT. TO STA. 18+50 LT. -L-
FROM STA. 17+90 RT. TO STA. 18+50 RT. -L-



BEGIN PROJECT B-4736
-L- POT Sta. 13+00.00

THE POWER LINE WILL BE RELOCATED ON TEMPORARY ARMS INSTALLED ON EXISTING POWER POLES TO OBTAIN MINIMUM HORIZONTAL CLEARANCE FROM THE BRIDGE REQUIRED FOR THE CONSTRUCTION.

THE EXISTING UNDERGROUND AND AERIAL TELEPHONE LINES WITHIN THE PROJECT LIMITS WILL BE ABANDONED. THE EXISTING TELEPHONE POLES AT THE BRIDGE WILL BE REMOVED. THERE ARE NO PLANS TO RE-INSTALL THE TELEPHONE LINES.

BEGIN BRIDGE
-L- Sta. 16+79.88

END BRIDGE
-L- Sta. 17+52.13

DATUM DESCRIPTION

COORDINATE SYSTEM DEVELOPED FOR THIS PROJECT THE STATE PLANE COORDINATES ESTABLISHED BY NCDOT FOR MONUMENT "B4736-1"
D 83/95 STATE PLANE GRID COORDINATES OF 250534.7319(±) EASTING: 2118651.7469(±) ELEVATION: 94.79(±)
COMBINED GRID FACTOR USED ON THIS PROJECT (GROUND TO GRID) IS: 0.99997343
THE N.C. LAMBERT GRID BEARING AND LOCALIZED HORIZONTAL GROUND DISTANCE FROM "B4736-1" TO -L- STATION IS
DIMENSIONS ARE LOCALIZED HORIZONTAL DISTANCES VERTICAL DATUM USED IS NAVD 88

END PROJECT B-4736
-L- POT Sta. 20+00.00