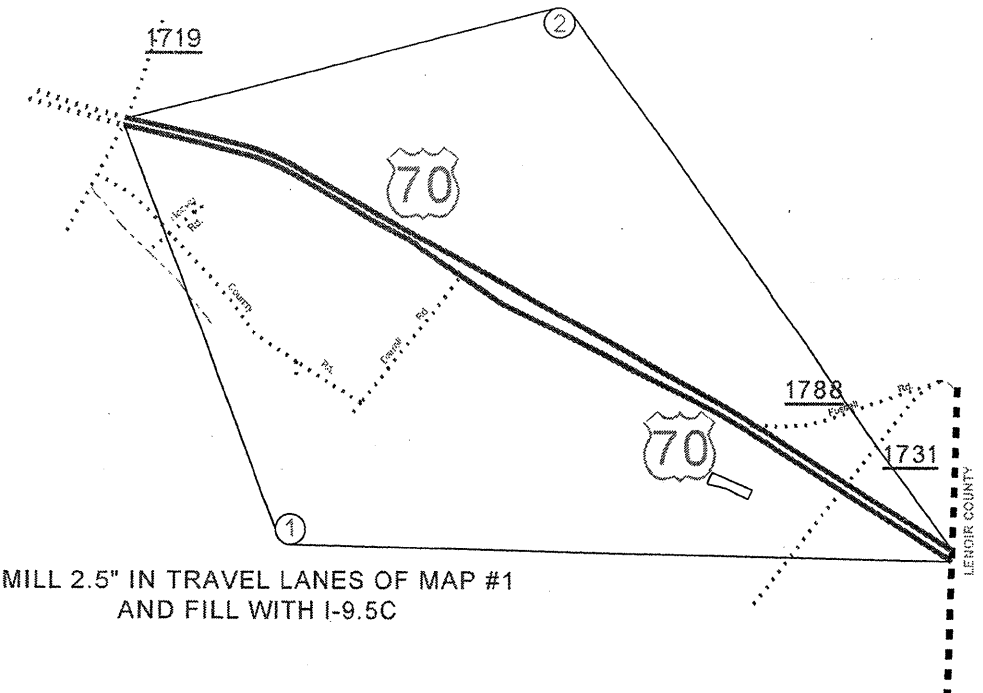
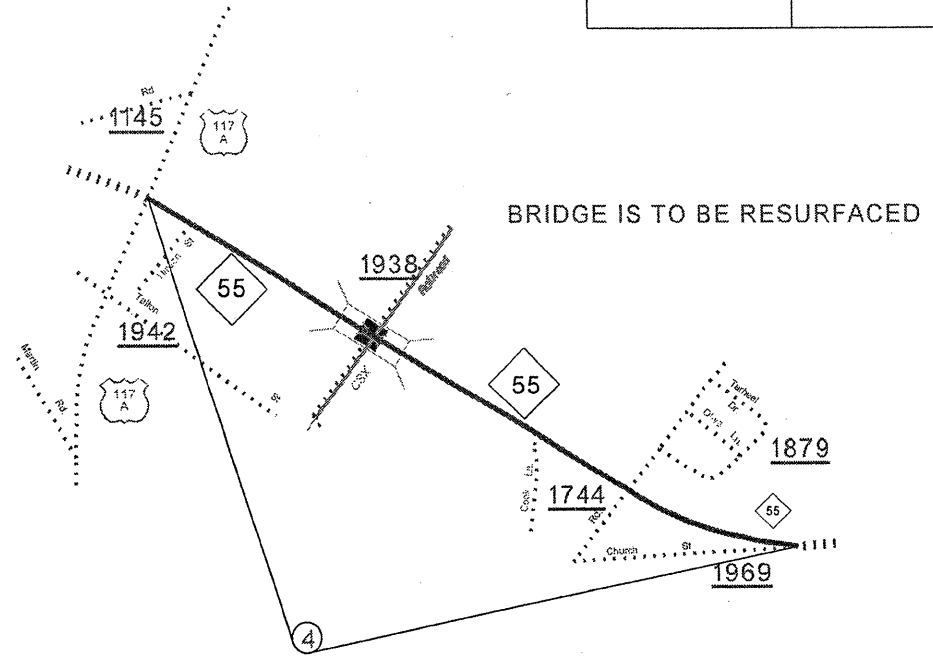


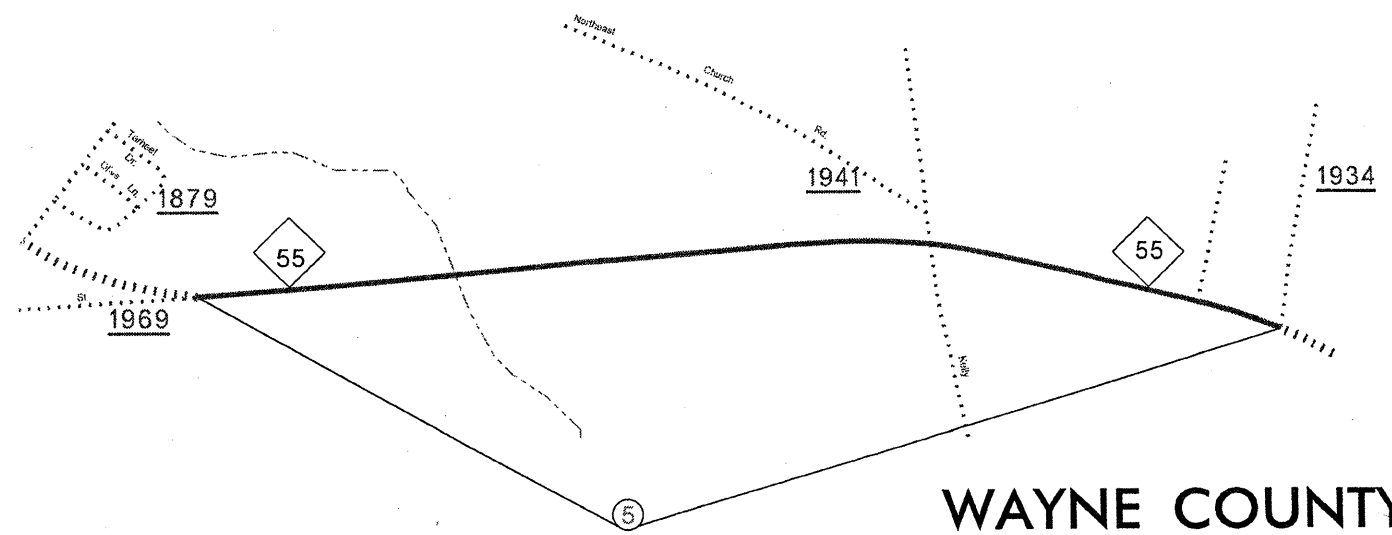
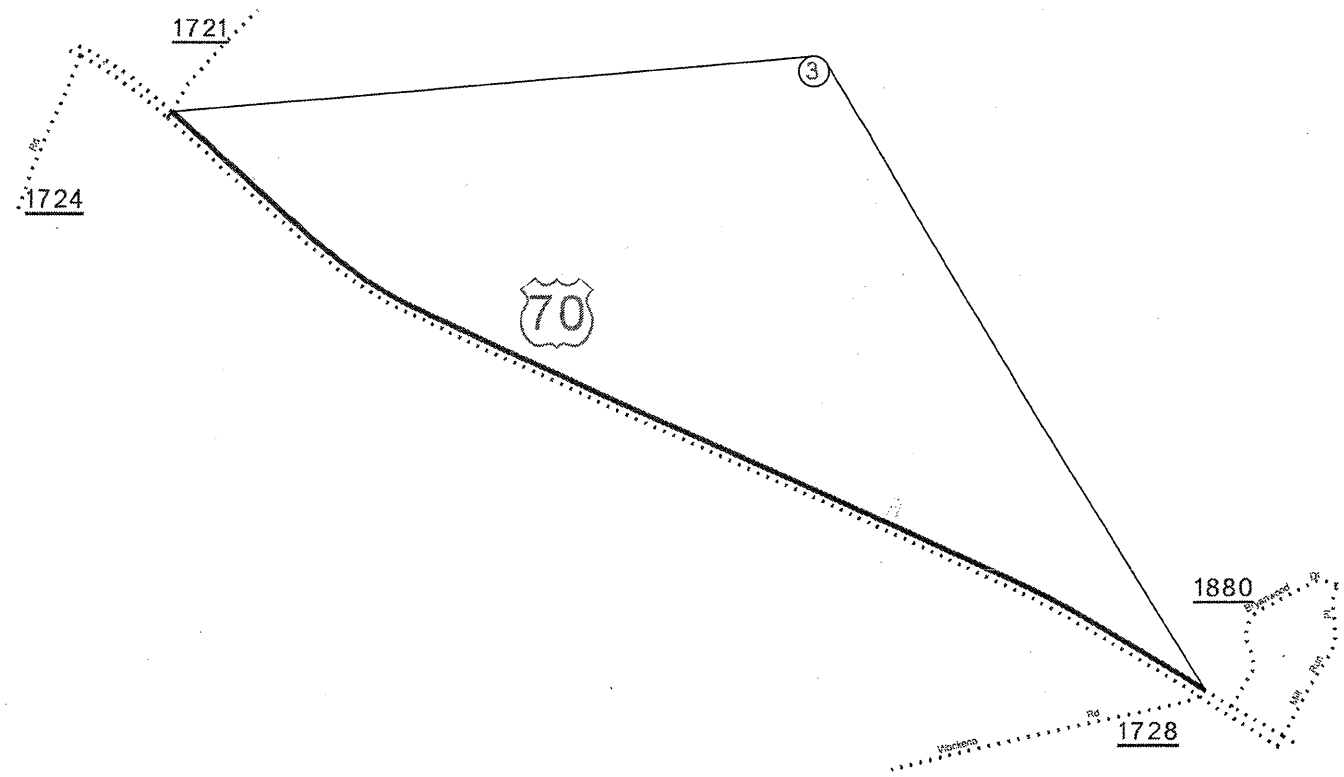
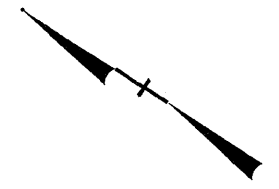
WBS ELEMENT		SHEET NO.	TOTAL SHEETS
4CR.10961.21		1	
PRIMARY	F. A. PROJ. NO.	DESCRIPTION	
		PRIMARY	



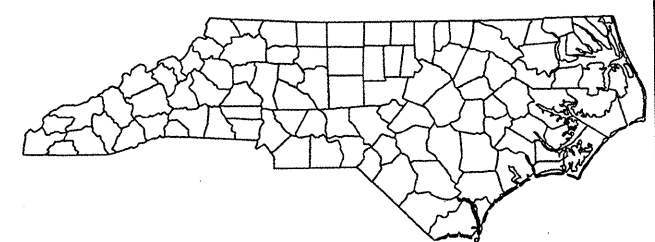
MILL 2.5" IN TRAVEL LANES OF MAP #1  
AND FILL WITH I-9.5C



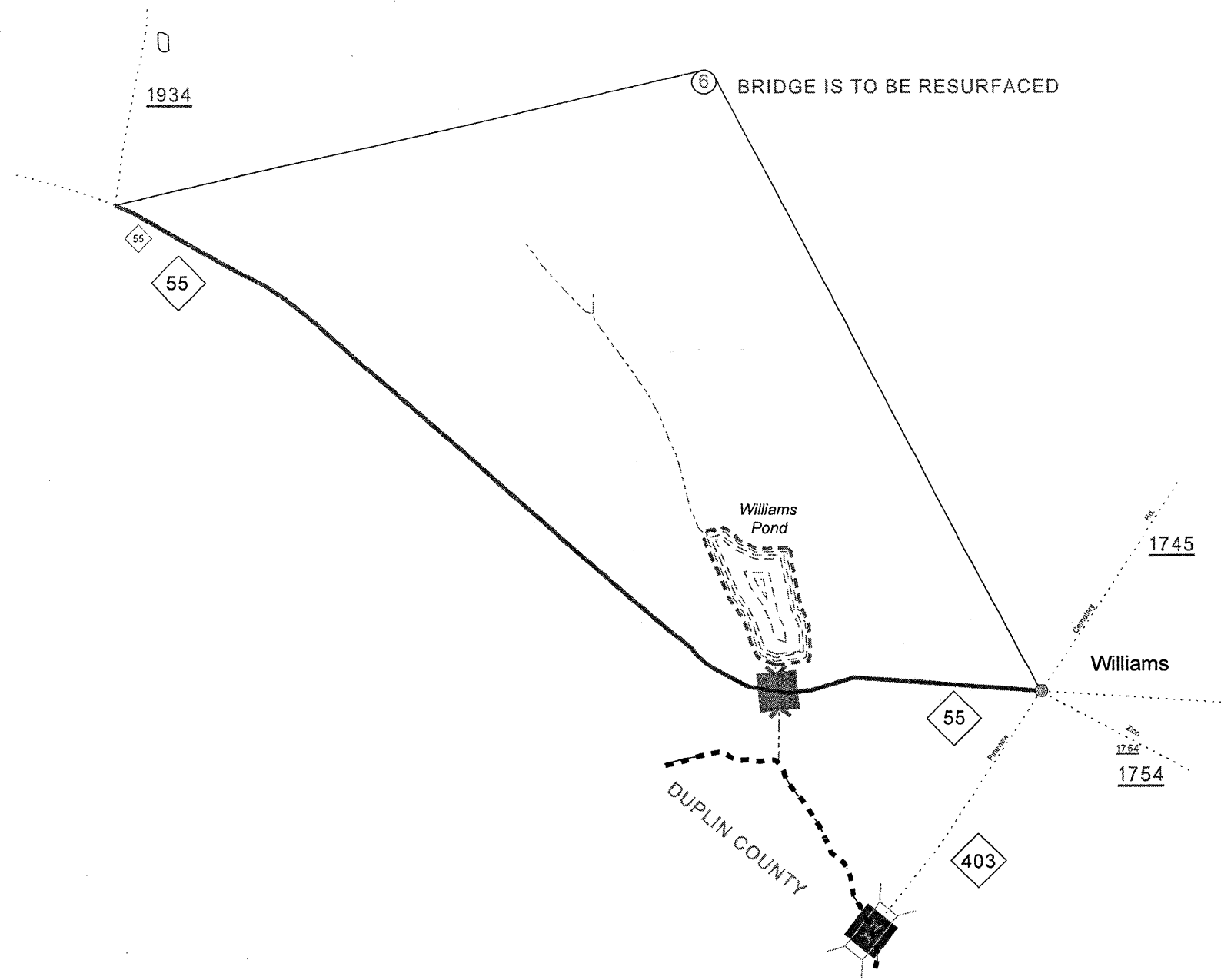
BRIDGE IS TO BE RESURFACED



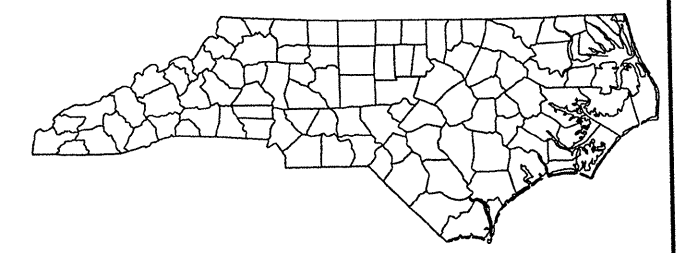
**WAYNE COUNTY**  
**NORTH CAROLINA**  
**SHEET 1**



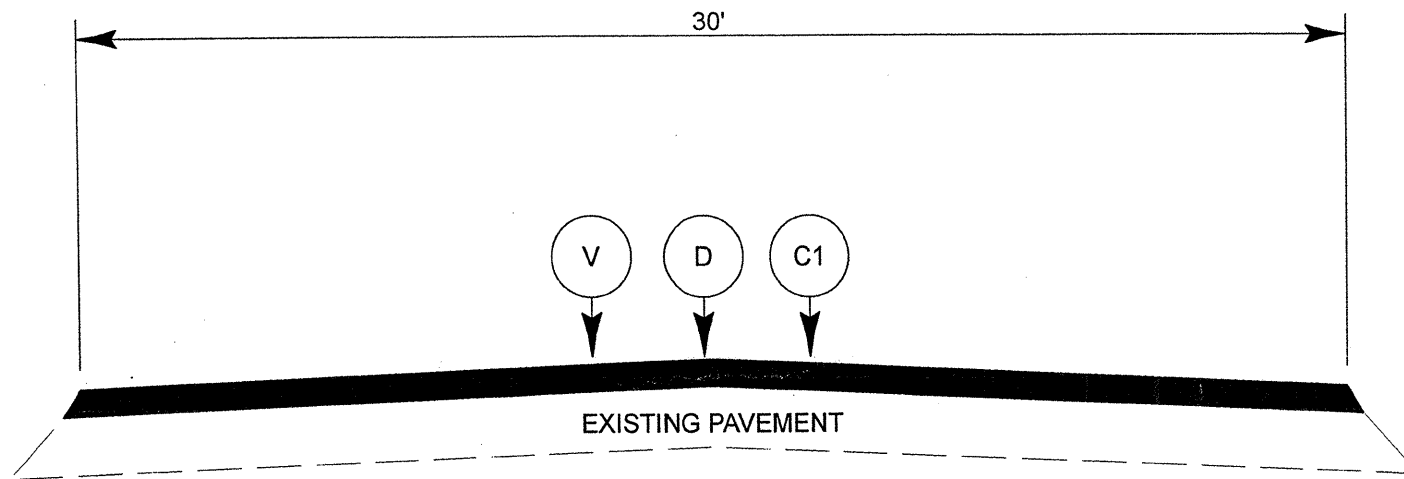
WBS ELEMENT		SHEET NO.	TOTAL SHEETS
4CR.10961.21		2	
PRIMARY	F. A. PROJ. NO.	DESCRIPTION	
		PRIMARY	



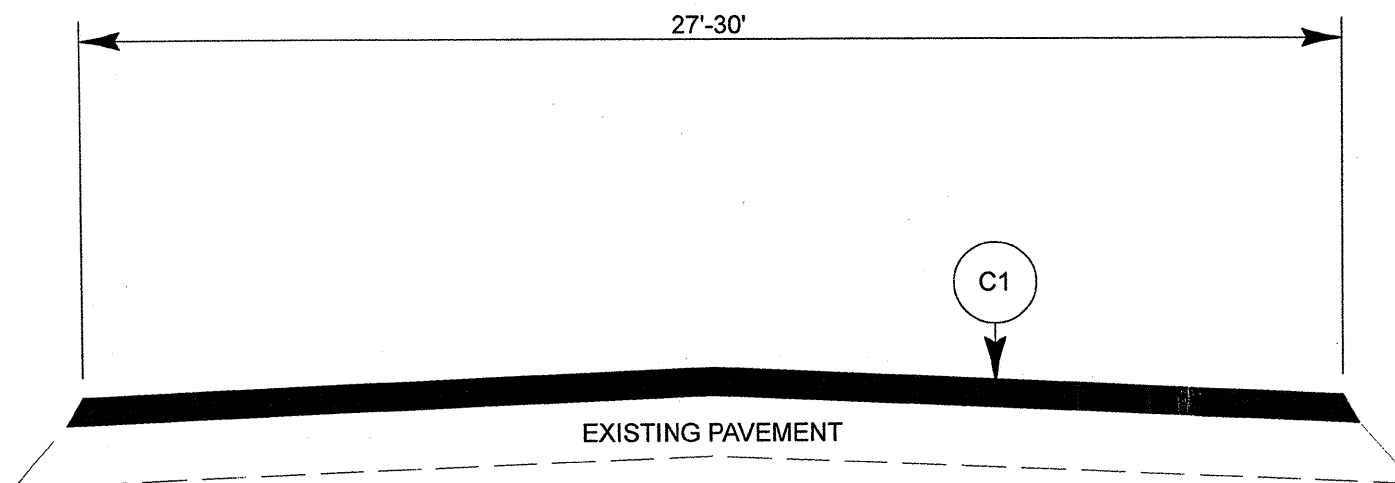
**WAYNE COUNTY**  
**NORTH CAROLINA**  
**SHEET 2**



PROJECT NO. 4CR.10961.21	SHEET NO. 3	TOTAL SHEETS
-----------------------------	----------------	--------------



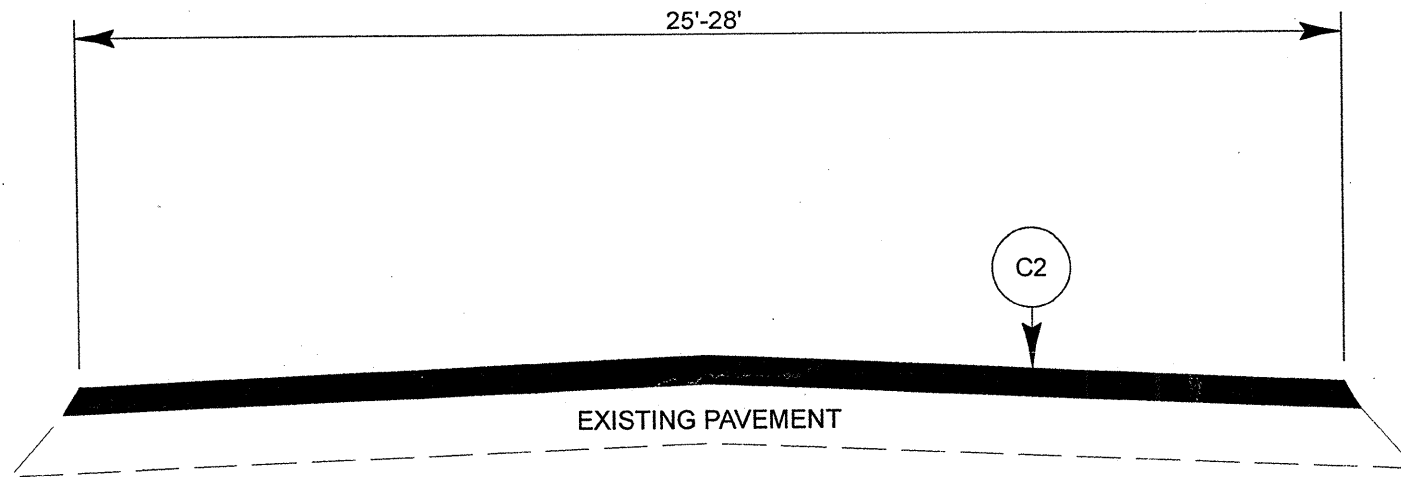
TYPICAL SECTION NO. 1



TYPICAL SECTION NO. 2

PAVEMENT SCHEDULE	
C1	PROPOSED APPROX. 1.5" OF S 9.5C AT AN AVERAGE RATE OF 168 LBS/SY
C2	PROPOSED APPROX. 1.5" OF S 9.5 B AT AN AVERAGE RATE OF 168 LBS/SY
D	PROPOSED APPROX. 2.5" OF I 19.0C AT AN AVERAGE RATE OF 285 LBS/SY
V	MILL TRAVEL LANES 2.5"

PROJECT NO.	SHEET NO.	TOTAL SHEETS
4CR.10961.21	4	



TYPICAL SECTION NO. 3

PROJECT NO.	SHEET NO.	TOTAL NO.
4CR.10961.21	5	

## SUMMARY OF QUANTITIES

PROJECT NO	COUNTY	MAP NO	ROUTE	DESCRIPTION	TYP NO	FINAL SURFACE TESTING REQUIRED	LENGTH MI	WIDTH FT	2.5" MILLING SY	INCIDENTAL MILLING SY	INTERMEDIATE COURSE, I19.0C TONS	SURFACE COURSE, S9.5B TONS	SURFACE COURSE, S9.5C TONS	ASPHALT BINDER FOR PLANT MIX TONS
4CR.10961.21	Wayne	1	US 70 EBL	FROM SR 1719 TO LENOIR COUNTY	1	NO	1.52	30	21,403	355	3,336		2,495	307
		2	US 70 WBL	FROM LENOIR COUNTY TO SR 1719	2	NO	1.55	30		280			2,608	154
		3	US 70 WBL	FROM SR 1728 TO SR 1721	2	NO	2.02	27		300			3,024	178
		4	NC 55	FROM US 117 ALT TO END OF DIVIDED LANES @ SR 1969	3	NO	1.26	28		180		2,260		136
		5	NC 55	FROM END OF DIVIDED LANE TO SR 1934	3	NO	1.87	25		50		2,430		146
		6	NC 55	FROM SR 1934 TO NC 403	3	NO	2.41	25		140		3,244		195
<b>TOTAL FOR PROJ NO. 4CR.10961.21</b>							<b>10.63</b>		<b>21,403</b>	<b>1,305</b>	<b>3,336</b>	<b>7,934</b>	<b>8,127</b>	<b>1,116</b>
<b>GRAND TOTAL</b>							<b>10.63</b>		<b>21,403</b>	<b>1,305</b>	<b>3,336</b>	<b>7,934</b>	<b>8,127</b>	<b>1,116</b>

## THERMOPLASTIC AND PAINT QUANTITIES

PROJECT NO	COUNTY	MAP NO	ROUTE	DESCRIPTION	LEN GTH	WIDTH	4810000000-E		4815000000-E		4820000000-E	4845000000-N		
							4" YELLOW PAINT	4" WHITE PAINT	6" WHITE PAINT	6" YELLOW PAINT	8" WHITE PAINT	PAINT LT ARROW	PAINT STR ARROW	PAINT RT ARROW
							LF	LF	LF	LF	LF	EA	EA	EA
4CR.10961.21	Wayne	1	US 70 EBL	FROM SR 1719 TO LENOIR COUNTY	1.5	30	230		24,685	16,433	1,216	6	3	3
		2	US 70 WBL	FROM LENOIR COUNTY TO SR 1719	1.6	30			25,172	16,523		5	1	4
		3	US 70 WBL	FROM SR 1728 TO SR 1721	2	27			32,805	21,533		6		
		4	NC 55	FROM US 117 ALT TO END OF DIVIDED LANES @ SR 1969	1.3	28	13,432	20,462			250			
		5	NC 55	FROM END OF DIVIDED LANE TO SR 1934	1.9	25	24,684	40,242						
		6	NC 55	FROM SR 1934 TO NC 403	2.4	25	31,812	51,863						
<b>TOTAL FOR PROJ NO. 4CR.10961.21</b>					<b>11</b>		<b>70,158</b>	<b>112,567</b>	<b>82,662</b>	<b>54,489</b>	<b>1,466</b>	<b>17</b>	<b>4</b>	<b>7</b>
							<b>182,725</b>		<b>137,151</b>		<b>28</b>			
<b>GRAND TOTAL</b>					<b>11</b>		<b>70,158</b>	<b>112,567</b>	<b>82,662</b>	<b>54,489</b>	<b>1,466</b>	<b>17</b>	<b>4</b>	<b>7</b>
							<b>182,725</b>		<b>137,151</b>		<b>28</b>			