

28-AUG-2012 10:38
 S:\Contracts\Resurfacing Projects\Division\hydeterrelletc\IC.094039, ETC. (Hyde, Tyrrell & Washington Co Resurfacing - 2013)\Pre-Bid Documents\Plans\IC.094039, ETC. 09/08/95
 Reporter At CSD26658

CONTRACT NO.: WBS ELEMENT : IC.094039, ETC.

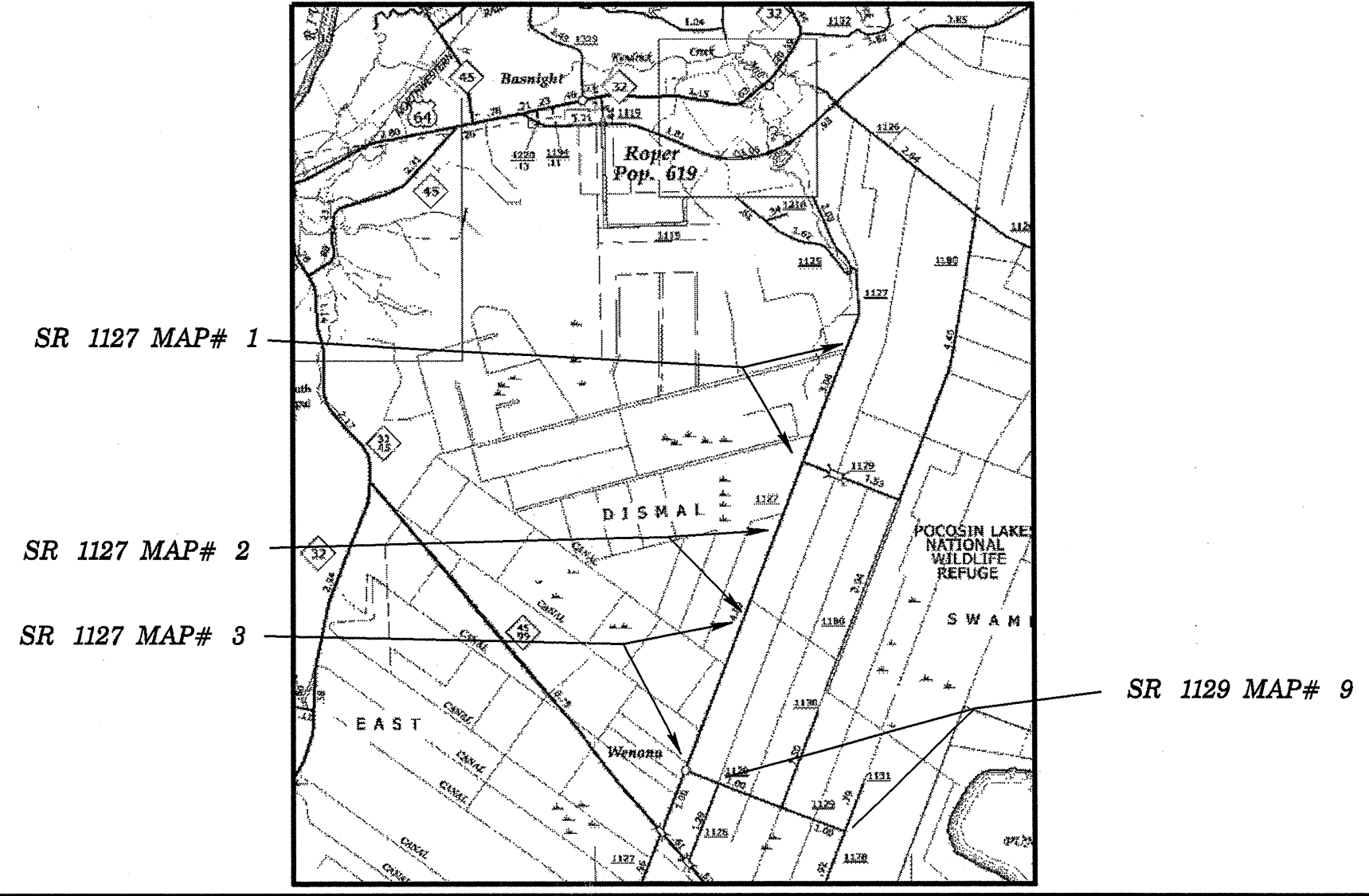


STATE OF NORTH CAROLINA
DIVISION OF HIGHWAYS

WASHINGTON COUNTY

LOCATION: MAP #1 SR 1127 BEGIN PROJECT 1.3 FROM SR 1125 FOR 1.78 TO SR 1179
MAP #2 SR 1127 FROM NEW PAVEMENT FOR 1.5 MILES
MAP #3 SR 1127 FROM END MILLING TO SR 1129
TYPE OF WORK: MILLING AND RESURFACING

STATE	STATE PROJECT REFERENCE NO.	SHEET NO.	TOTAL SHEETS
N.C.	IC.094039, ETC.	1	
STATE PROJ. NO.	P.A. PROJ. NO.	DESCRIPTION	



NOT TO SCALE

PROJECT LENGTH	
LENGTH ROADWAY PROJECT MAP 1 =	1.78 MILES
LENGTH ROADWAY PROJECT MAP 2 =	1.50 MILES
LENGTH ROADWAY PROJECT MAP 3 =	1.90 MILES
LENGTH ROADWAY PROJECT MAP 9 =	2.00 MILES
SUBTOTAL LENGTH ROADWAY PROJECT =	7.18 MILES

Prepared in the Office of:	
DIVISION OF HIGHWAYS	
2012 STANDARD SPECIFICATIONS	
LETTING DATE: OCTOBER 16, 2012	W.B. HOBBS, P.E. DIVISION PROJECT MANAGER C.E. SLACHTA DIVISION PROPOSALS ENGINEER

DIVISION OF HIGHWAYS
 STATE OF NORTH CAROLINA

*****SYSTEMS*****
 *****CD/CN*****
 *****DATE*****
 *****USER/NAME*****

 09/08/12

CONTRACT NO.: WBS ELEMENT : IC.094039, ETC.

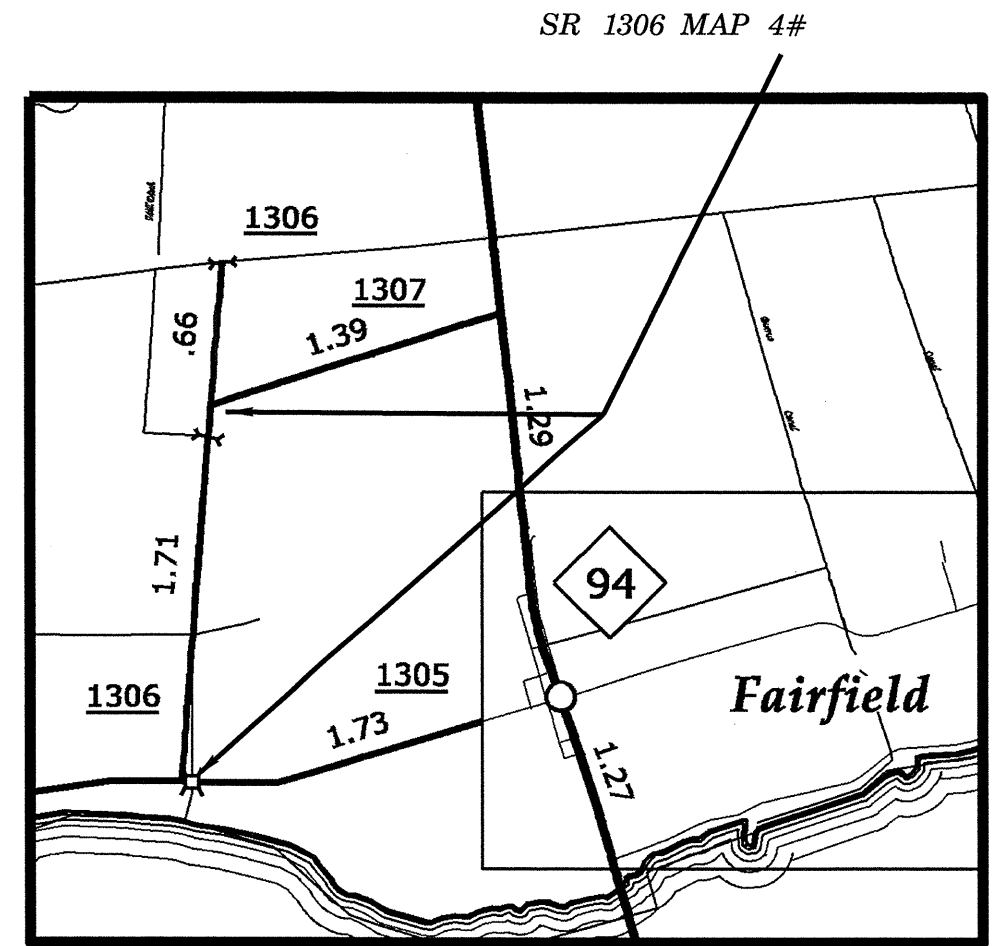
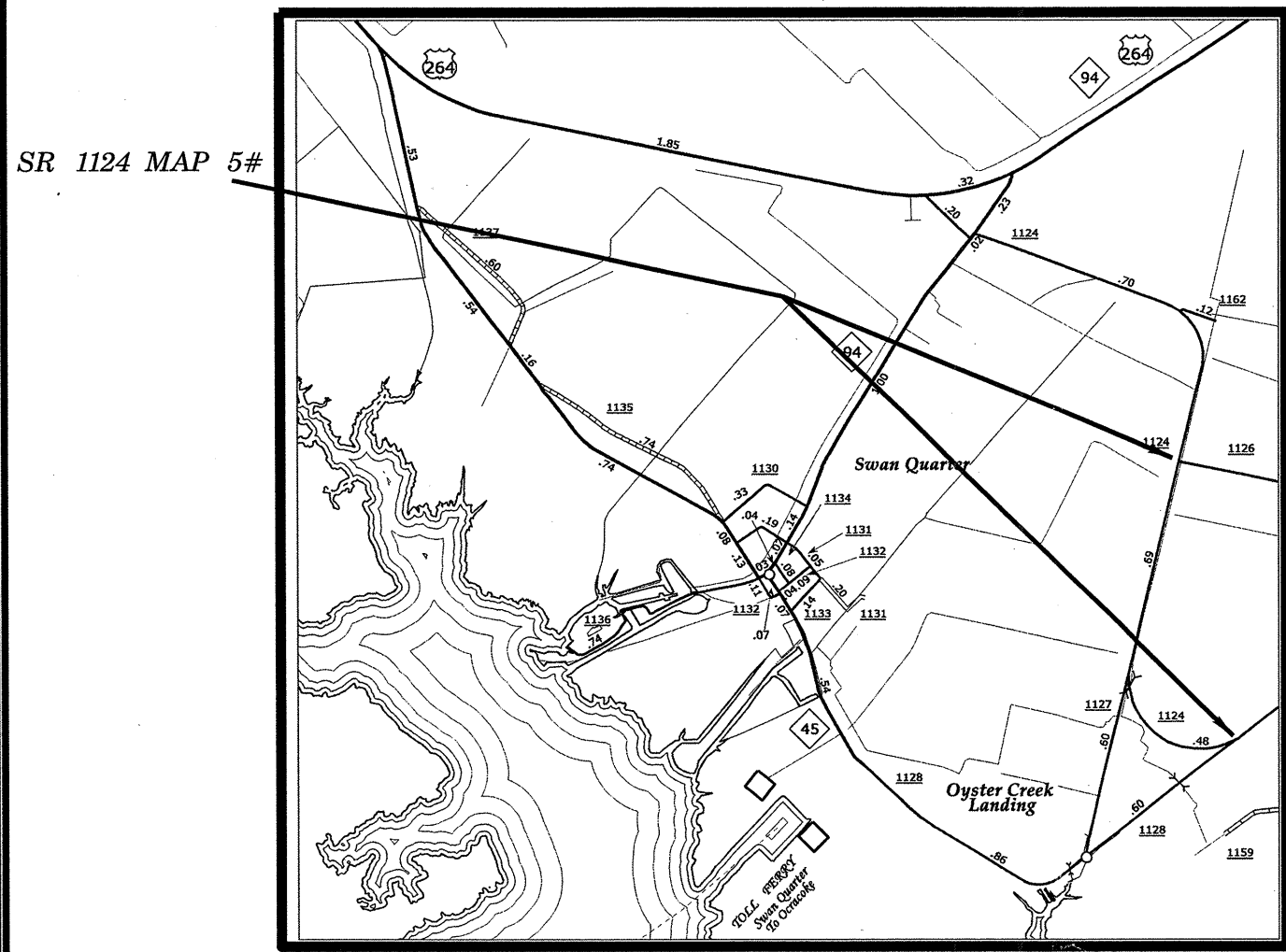
STATE OF NORTH CAROLINA
 DIVISION OF HIGHWAYS

HYDE COUNTY

STATE	STATE PROJECT REFERENCE NO.	SHEET NO.	TOTAL SHEETS
N.C.	IC.094039, ETC.	2	
STATE FUND NO.	F.A. FUND NO.	DESCRIPTION	



LOCATION: MAP 5# SR 1124 FROM SR 1126 TO SR 1128 & MAP 4 # SR 1306 FROM SR 1305 TO SR 1307
TYPE OF WORK: RESURFACING



NOT TO SCALE

PROJECT LENGTH
LENGTH ROADWAY PROJECT MAP 4= 1.60 MILES
LENGTH ROADWAY PROJECT MAP 5= 1.10 MILES
SUBTOTAL LENGTH ROADWAY PROJECT = 2.70 MILES

Prepared In the Office of: DIVISION OF HIGHWAYS	
2012 STANDARD SPECIFICATIONS LETTING DATE: OCTOBER 16, 2012	W.B. HOBBS, P.E. DIVISION PROJECT MANAGER C.E. SLACHTA DIVISION PROPOSALS ENGINEER

DIVISION OF HIGHWAYS
 STATE OF NORTH CAROLINA

09/08/09

CONTRACT NO.: WBS ELEMENT: IC.094039, ETC.

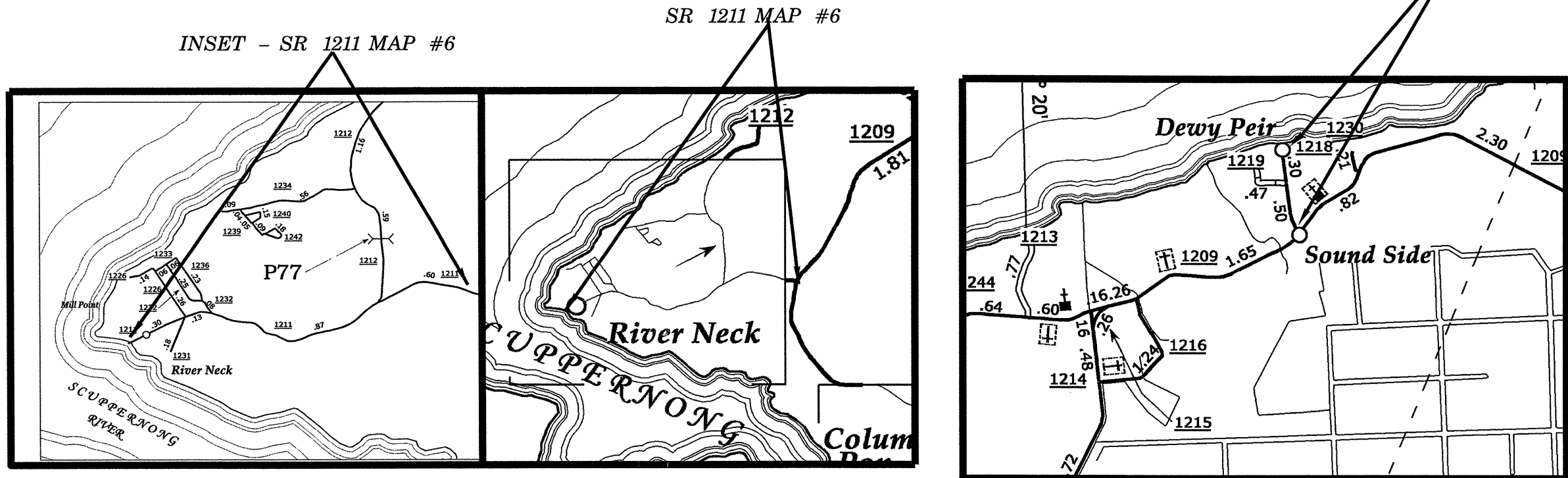
STATE OF NORTH CAROLINA
DIVISION OF HIGHWAYS
TYRRELL COUNTY

STATE	STATE PROJECT REFERENCE NO.	SHEET NO.	TOTAL SHEETS
N.C.	IC.094039, ETC.	3	
STATE PROJ. NO.	F.A. PROJ. NO.	DESCRIPTION	



LOCATION: MAP #6 SR 1211 FROM SR 1209 TO END PAVEMENT
MAP #7 SR 1218 FROM SR 1209 TO END PAVEMENT
TYPE OF WORK: RESURFACING

SR 1218 MAP #7



NOT TO SCALE

PROJECT LENGTH

LENGTH ROADWAY PROJECT MAP 6 = 1.90 MILES
LENGTH ROADWAY PROJECT MAP 7 = 0.80 MILES
SUBTOTAL LENGTH ROADWAY PROJECT = 2.70 MILES

Prepared in the Office of:
DIVISION OF HIGHWAYS

2012 STANDARD SPECIFICATIONS

LETTING DATE:
OCTOBER 16, 2012

W.B. HOBBS, P.E.
DIVISION PROJECT MANAGER

C.E. SLACHTA
DIVISION PROPOSALS ENGINEER

DIVISION OF HIGHWAYS
STATE OF NORTH CAROLINA



\$\$\$\$\$ SYSTEM \$\$\$\$\$\$
\$\$\$\$\$ \$\$\$\$\$\$ DONS \$\$\$\$\$\$
\$\$\$\$\$ USERNAME \$\$\$\$\$\$

09/08/99

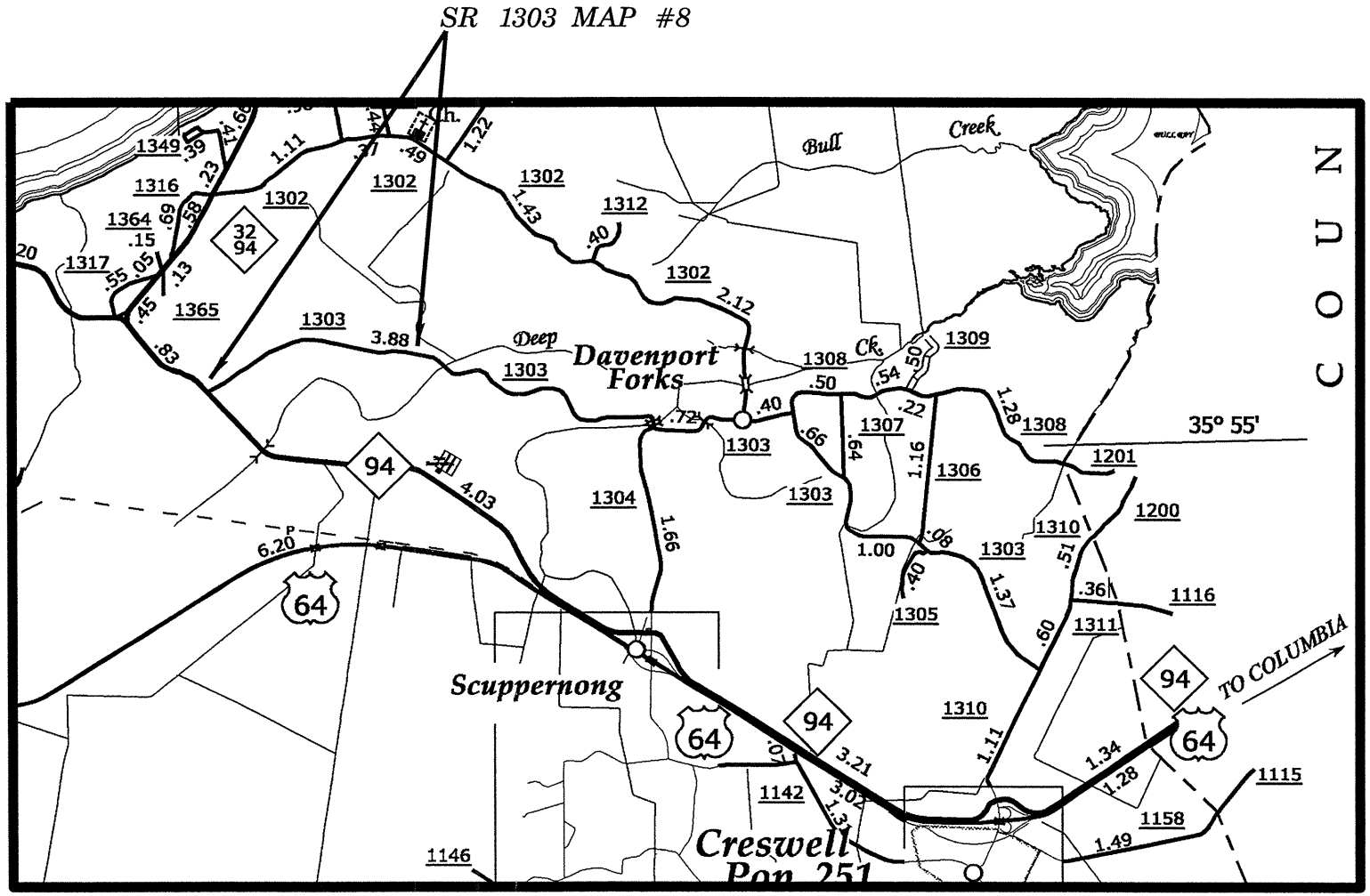
CONTRACT NO.: WBS ELEMENT : IC.094039, ETC.

STATE	STATE PROJECT REFERENCE NO.	SHEET NO.	TOTAL SHEETS
N.C.	IC.094039, ETC.	4	
STATE PROJ. NO.	F.A. PROJ. NO.	DESCRIPTION	



STATE OF NORTH CAROLINA
 DIVISION OF HIGHWAYS
WASHINGTON COUNTY

LOCATION: MAP # 8 SR 1303 FROM NC 94 TO NEW PAVEMENT
 TYPE OF WORK: RESURFACING



\$\$\$\$SYTIME\$\$\$\$
 \$\$\$DDGN\$\$\$\$
 \$\$\$USERNAME\$\$\$\$

NOT TO SCALE

PROJECT LENGTH
 LENGTH ROADWAY PROJECT MAP 8 = 1.80 MILES
 SUBTOTAL LENGTH ROADWAY PROJECT = 1.80 MILES

Prepared in the Office of:
DIVISION OF HIGHWAYS
 2012 STANDARD SPECIFICATIONS
 LETTING DATE:
 OCTOBER 16, 2012
 W.B. HOBBS, P.E.
 DIVISION PROJECT MANAGER
 C.E. SLACHTA
 DIVISION PROPOSALS ENGINEER

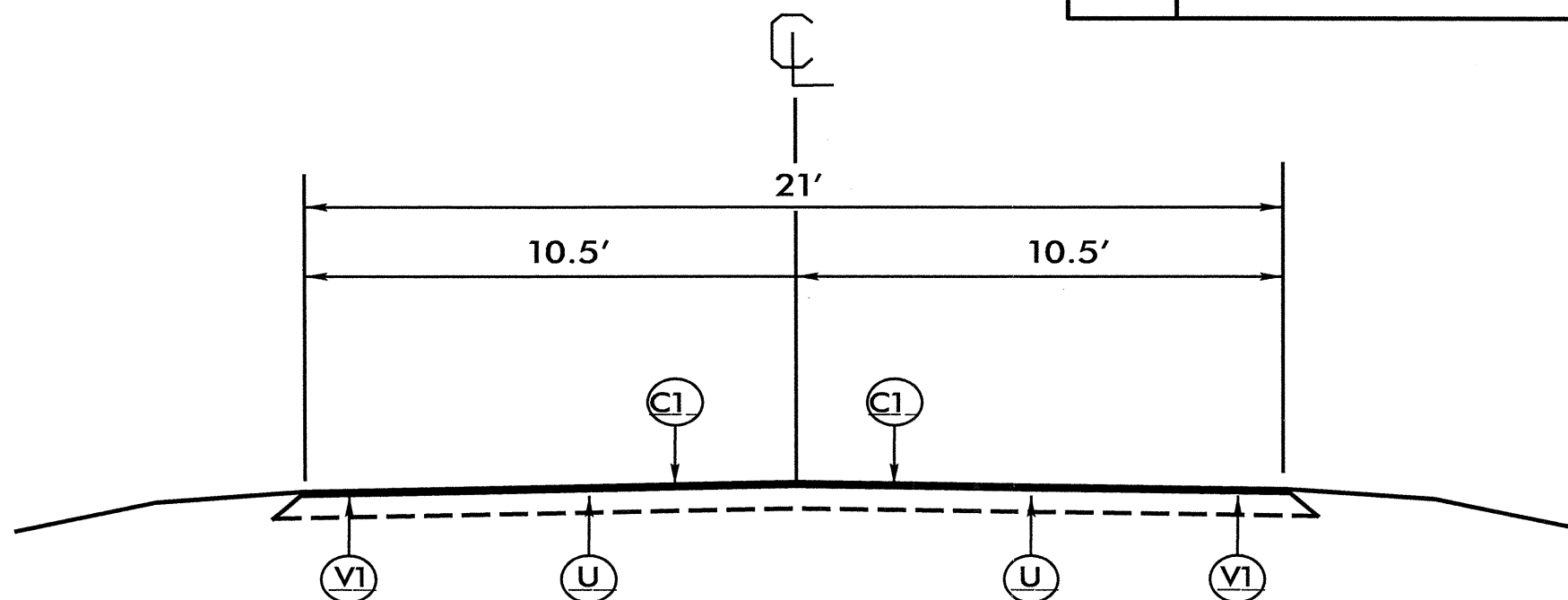
DIVISION OF HIGHWAYS
 STATE OF NORTH CAROLINA

NOTES:

1. ALL PAVED S.R. ROADS TO BE RESURFACED TO THE ENDS OF THE RADII OR AS DIRECTED BY THE ENGINEER
2. EDGES, PAVEMENT WIDENING, INTERSECTIONS, AND BRIDGE FLARES ARE INCLUDED IN THE TABLE OF QUANTITIES
3. PAVEMENT EDGE SLOPES ARE 1:1 UNLESS SHOWN OTHERWISE
4. LEVELING COURSE TO BE APPLIED ACROSS ENTIRE ROADWAY WIDTH ON MAP #1 ONLY
5. SHOULDER RECONSTRUCTION TO BE PERFORMED BY OTHERS

PROJECT REFERENCE NO.	SHEET NO.
1C.094039, ETC.	5

PAVEMENT SCHEDULE	
C1	PROP. APPROX. 2.0" ASPHALT CONCRETE SURFACE COURSE TYPE SF9.5A, AT AN AVERAGE RATE OF 220 LBS. PER SQ.YD.
V1	MILLING DEPTH 4"
U	EXISTING PAVEMENT



TYPICAL SECTION #1

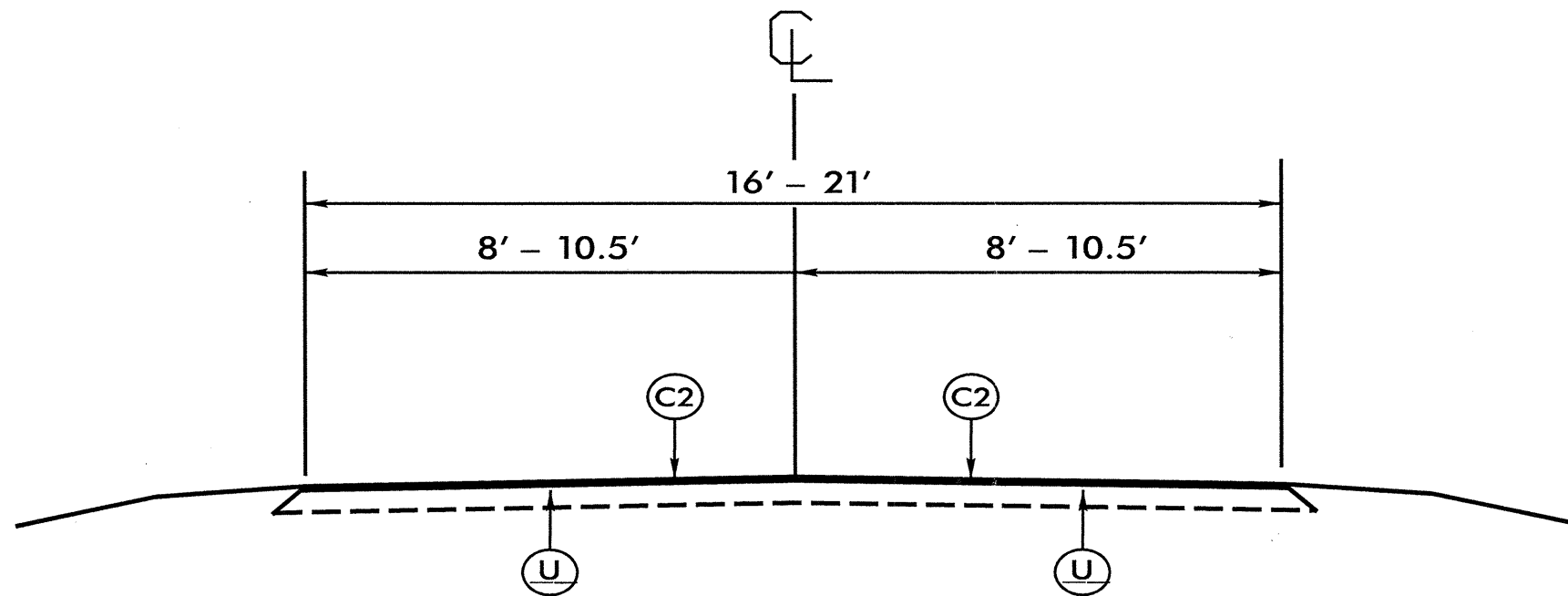
USE WITH MAPS 1 & 2

NOTES:

1. ALL PAVED S.R. ROADS TO BE RESURFACED TO THE ENDS OF THE RADII OR AS DIRECTED BY THE ENGINEER
2. EDGES, PAVEMENT WIDENING, INTERSECTIONS, AND BRIDGE FLARES ARE INCLUDED IN THE TABLE OF QUANTITIES
3. PAVEMENT EDGE SLOPES ARE 1:1 UNLESS SHOWN OTHERWISE
4. SHOULDER RECONSTRUCTION TO BE PERFORMED BY OTHERS

PROJECT REFERENCE NO.	SHEET NO.
1C.094039, ETC.	6

PAVEMENT SCHEDULE	
C2	PROP. APPROX. 1.5" ASPHALT CONCRETE SURFACE COURSE TYPE SF9.5A, AT AN AVERAGE RATE OF 165 LBS. PER SQ.YD.
U	EXISTING PAVEMENT



TYPICAL SECTION #2
 USE WITH MAP 3,4,5,6,7,8 & 9

PROJECT NO.	SHEET NO.	TOTAL NO.
1C.094039,ETC.	7	

SUMMARY OF QUANTITIES

PROJECT	COUNTY	MAP	ROUTE	DESCRIPTION	TYP	LENGTH	WIDTH	FINAL SURFACE TESTING REQUIRED	INCIDENTAL MILLING	4" MILLING	LEVELING COURSE, SF9.5A	SURFACE COURSE, SF9.5A	ASPHALT BINDER FOR PLANT MIX
NO		NO			NO	MI	FT		SY	SY	TONS	TONS	TON
1C.094039	Washington	1	SR 1127	BEGIN PROJ. 1.3 MILES FROM SR 1125 FOR 1.78 MILES TO SR 1179	1	1.78	21	NO		24,122	1,233	2,675	253
1C.094039	Washington	2	SR 1127	FROM NEW PAVEMENT FOR 1.5 MILES	1	1.50	21	NO		20,328		2,254	151
1C.094039	Washington	3	SR 1127	FROM END MILLING TO SR 1129	2	1.90	21	NO	25			2,137	143
1CR.20481.32	Hyde	4	SR 1306	FROM SR 1305 TO SR 1307	2	1.60	18	NO	25			1,544	103
1CR.20481.33	Hyde	5	SR 1124	FROM SR 1126 TO SR 1128	2	1.10	18	NO	25			1,061	71
1CR.20891.22	Tyrrell	6	SR 1211	FROM SR 1209 TO END PAVEMENT	2	1.90	20	NO				2,036	136
1CR.20891.23	Tyrrell	7	SR 1218	FROM SR 1209 TO END PAVEMENT	2	0.80	18	NO				772	52
1CR.20941.17	Washington	8	SR 1303	FROM NC 94 TO NEW PAVEMENT	2	1.80	20	NO				1,929	129
1CR.20941.18	Washington	9	SR 1129	FROM SR 1128 TO SR 1178	2	2.00	16	NO	25			1,717	115
GRAND TOTAL						14.38			100	44,450	1,233	16,125	1,153

THERMOPLASTIC AND PAINT QUANTITIES

PROJECT	COUNTY	MAP	ROUTE	DESCRIPTION	LENGTH	WIDTH	TEMPORARY TRAFFIC CONTROL	4" WHITE PAINT	4" YELLOW PAINT
NO		NO					LS	LF	LF
1C.094039	Washington	1	SR 1127	BEGIN PROJ. 1.3 MILES FROM SR 1125 FOR 1.78 MILES TO SR 1179	1.78	21	*	38,306	23,496
1C.094039	Washington	2	SR 1127	FROM NEW PAVEMENT FOR 1.5 MILES	1.5	21	*	32,280	19,800
1C.094039	Washington	3	SR 1127	FROM END MILLING TO SR 1129	1.9	21	*	40,888	25,080
1CR.20481.32	Hyde	4	SR 1306	FROM SR 1305 TO SR 1307	1.6	18	*	34,432	21,120
1CR.20481.33	Hyde	5	SR 1124	FROM SR 1126 TO SR 1128	1.1	18	*	23,672	14,520
1CR.20891.22	Tyrrell	6	SR 1211	FROM SR 1209 TO END PAVEMENT	1.9	20	*	40,888	25,080
1CR.20891.23	Tyrrell	7	SR 1218	FROM SR 1209 TO END PAVEMENT	0.8	18	*	17,216	10,560
1CR.20941.17	Washington	8	SR 1303	FROM NC 94 TO NEW PAVEMENT	1.8	20	*	38,736	23,760
1CR.20941.18	Washington	9	SR 1129	FROM SR 1128 TO SR 1178	2	16	*	43,040	26,400
GRAND TOTAL								309,458	189,816
					14.38		1	499,274	