

09/08/99

T.I.P. NO.	SHEET NO.
B-4632	UO-1

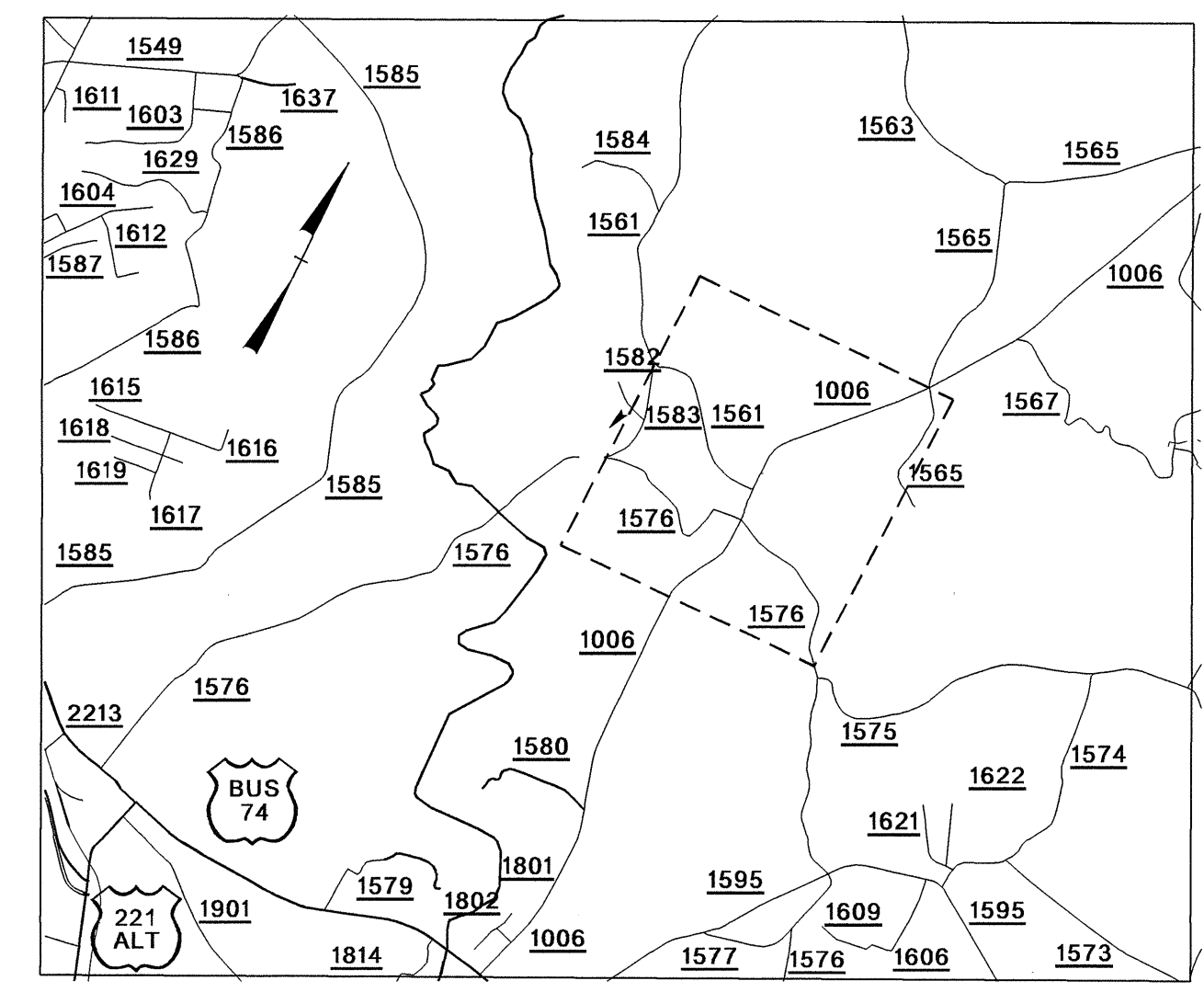
STATE OF NORTH CAROLINA
DIVISION OF HIGHWAYS

**UTILITIES BY OTHERS PLANS
RUTHERFORD COUNTY**

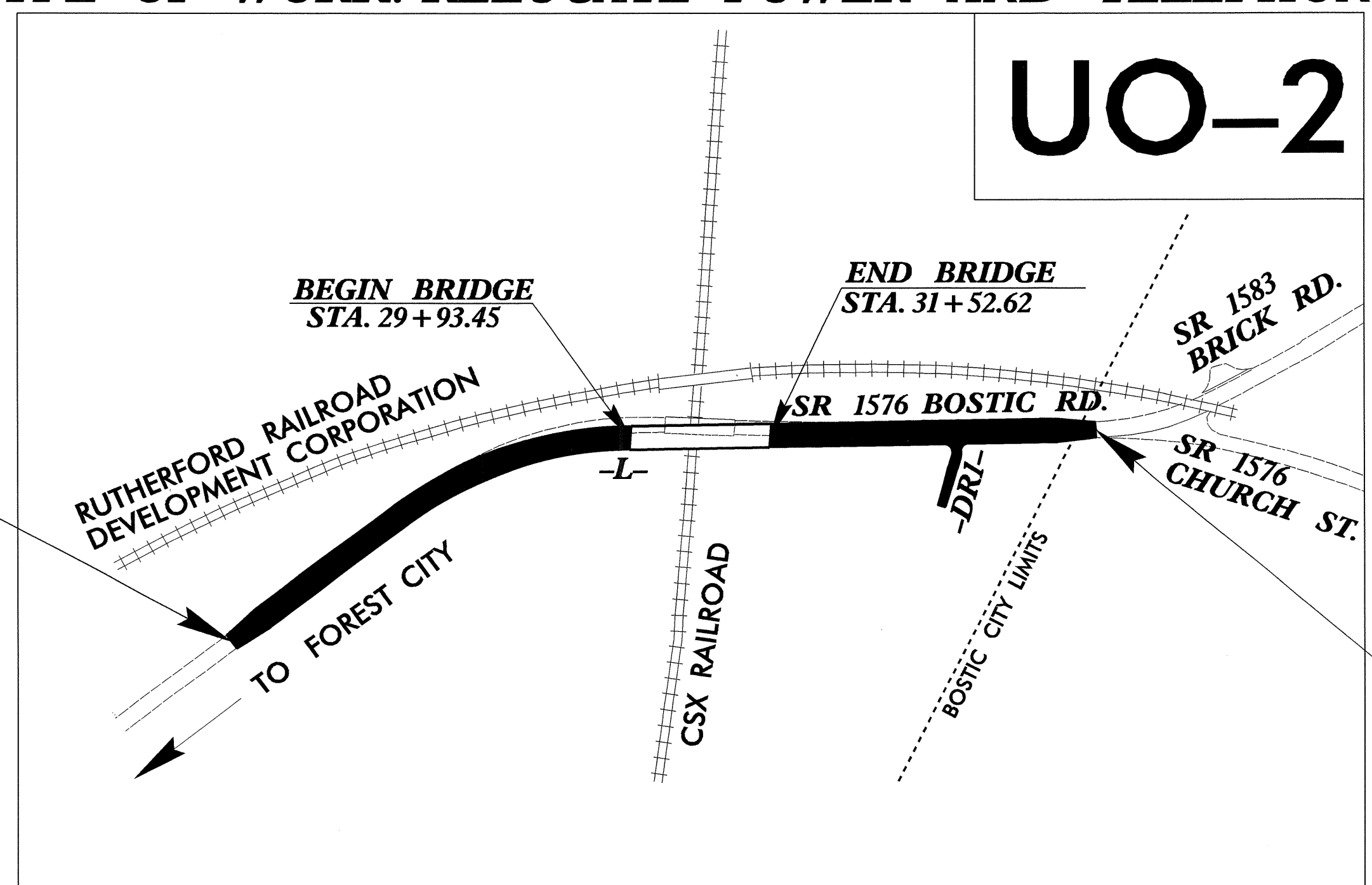
LOCATION: REPLACE BRIDGE OVER CSX RAILROAD ON SR 1576

TYPE OF WORK: RELOCATE POWER AND TELEPHONE

TIP PROJECT: B-4632

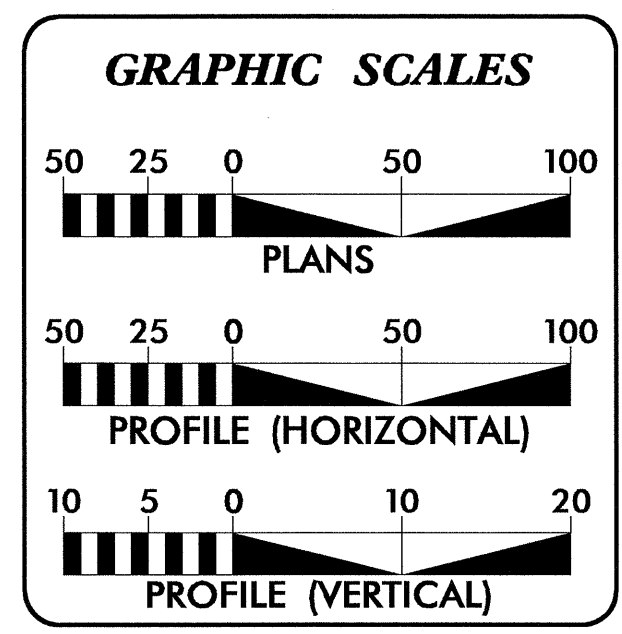


STA 24+15.00
-L- BEGIN TIP PROJECT B-4632



STA. 35+70.00
-L- END TIP PROJECT B-4632

02-JUL-2012 15:57
R:\Utilities\RDY_UH\Proj\B4632_UT_Title_U01_psh.dgn
\$\$\$\$\$USERNAME\$\$\$\$\$



INDEX OF SHEETS

SHEET NO.	DESCRIPTION
UO-1	TITLE SHEET
UO-2	UTILITY BY OTHERS PLAN SHEETS

UTILITY OWNERS ON PROJECT

(1) TELEPHONE - AT&T
(2) POWER - RUTHERFORD EMC

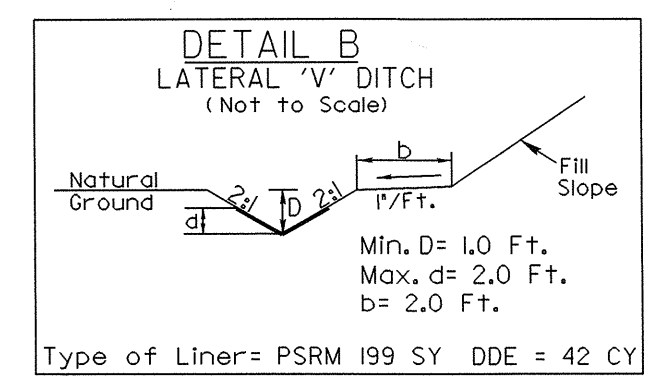
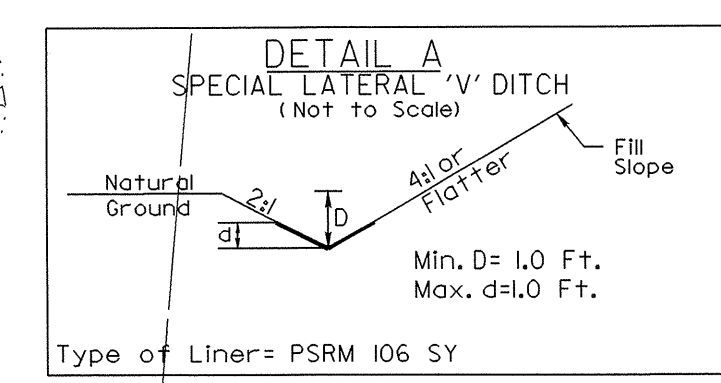
PREPARED IN THE OFFICE OF:
**DIVISION OF HIGHWAYS
UTILITIES UNIT
UTILITIES ENGINEERING**

1591 MAIL SERVICES CENTER
RALEIGH NC 27699-1591
PHONE (919) 707-6690
FAX (919) 250-4151

Roger Worthington, P.E. UTILITIES SECTION ENGINEER
Carl Barclay, P.E. UTILITIES SQUAD LEADER PROJECT ENGINEER
Ali Kouchehi, P.E. UTILITIES PROJECT DESIGNER

UTILITIES BY OTHERS

NOTE:
ALL PROPOSED UTILITY WORK SHOWN ON THIS SHEET WILL BE DONE BY OTHERS



FROM -L- STA. 26+00 TO STA. 26+50 LT.
FROM -L- STA. 33+50 TO STA. 34+50 LT.

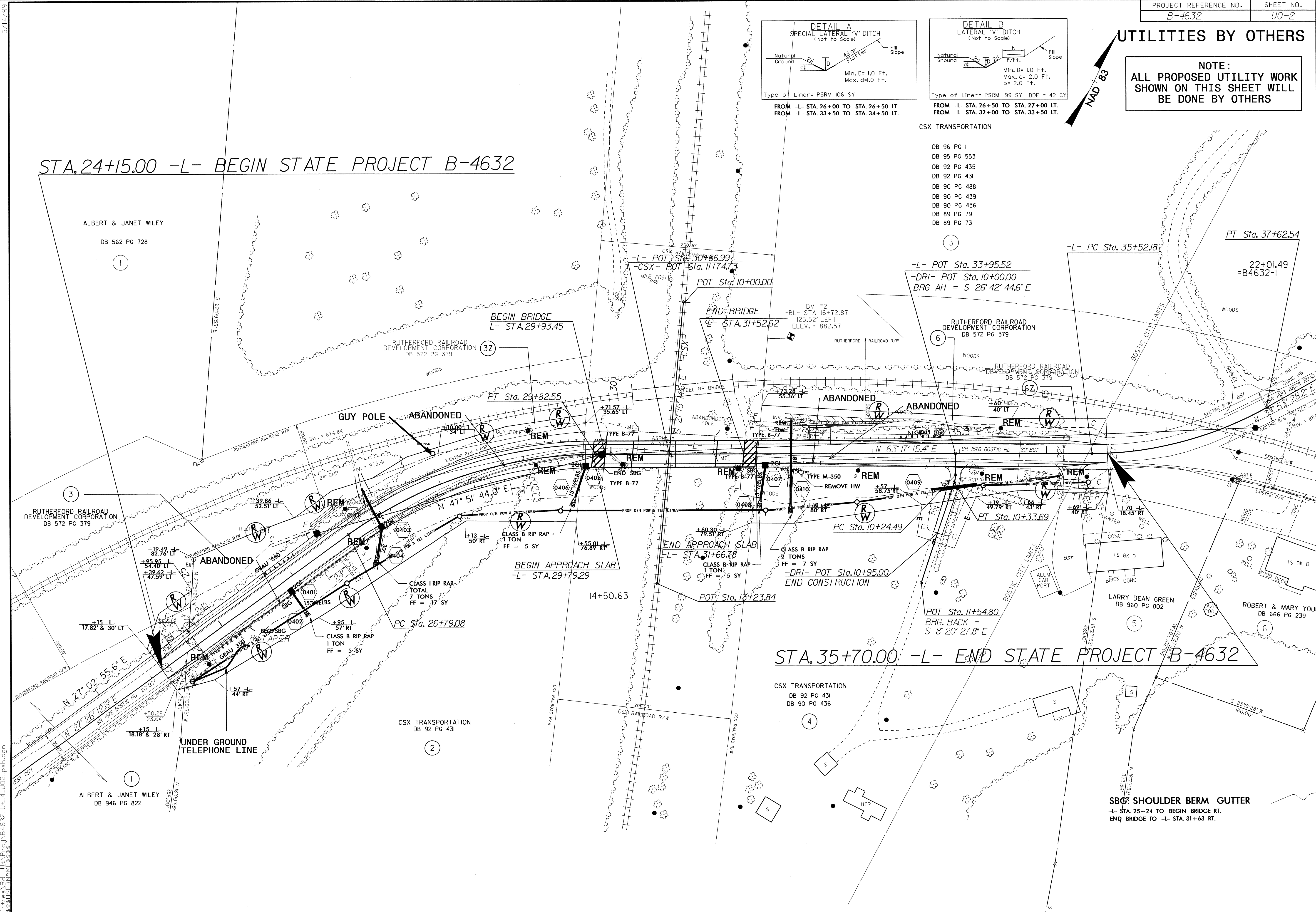
FROM -L- STA. 26+50 TO STA. 27+00 LT.
FROM -L- STA. 32+00 TO STA. 33+50 LT.

CSX TRANSPORTATION

- DB 96 PG 1
- DB 95 PG 553
- DB 92 PG 435
- DB 92 PG 431
- DB 90 PG 488
- DB 90 PG 439
- DB 90 PG 436
- DB 89 PG 79
- DB 89 PG 73

STA. 24+15.00 -L- BEGIN STATE PROJECT B-4632

STA. 35+70.00 -L- END STATE PROJECT B-4632



5/14/99
30-Jul-2012 09:08
I:\Projects\B4632\U0-2.dwg
\$\$\$\$\$\$
\$\$\$\$\$

SBG: SHOULDER BERM GUTTER
-L- STA. 25+24 TO BEGIN BRIDGE RT.
END BRIDGE TO -L- STA. 31+63 RT.