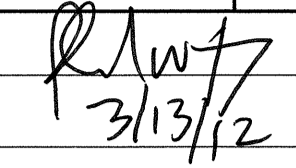



STATE OF NORTH CAROLINA  
DEPARTMENT OF TRANSPORTATION

PAVEMENT MARKING PLAN  
MOORE COUNTY

LOCATION: BRIDGE NO.2 OVER CSX TRANSPORTATION ON US 15/501

TIP NO. B-3680	SHEET NO. PMP-1
APPROVED: 	
DATE: 3/13/12	
SEAL	
	

ROADWAY STANDARD DRAWING

THE FOLLOWING ROADWAY STANDARDS AS APPEAR IN "ROADWAY STANDARD DRAWINGS" - PROJECT SERVICES UNIT - N.C. DEPARTMENT OF TRANSPORTATION - RALEIGH, N.C., DATED JANUARY 2012 ARE APPLICABLE TO THIS PROJECT AND BY REFERENCE HEREBY ARE CONSIDERED A PART OF THESE PLANS:

STD. NO.	TITLE
1205.01	PAVEMENT MARKINGS - LINE TYPES AND OFFSETS
1205.02	PAVEMENT MARKINGS - 2 LANE AND MULTILANE ROADWAYS
1205.04	PAVEMENT MARKINGS - INTERSECTIONS
1205.05	PAVEMENT MARKINGS - TURN LANES
1205.06	PAVEMENT MARKINGS - THRU LANE DROPS
1205.08	PAVEMENT MARKINGS - SYMBOL AND WORD MESSAGES
1205.09	PAVEMENT MARKINGS - PAINTED ISLANDS
1205.12	PAVEMENT MARKINGS - BRIDGES
1250.01	PAVEMENT MARKER SPACING
1251.01	RAISED PAVEMENT MARKERS - TEMPORARY AND PERMANENT
1261.01	GUARDRAIL AND BARRIER DELINEATOR SPACING
1261.02	GUARDRAIL AND BARRIER DELINEATOR TYPES
1262.01	GUARDRAIL END DELINEATION

PAVEMENT MARKING SCHEDULE

SYMBOL	DESCRIPTION
FINAL PAVEMENT MARKINGS	
THERMOPLASTIC(24", 120 MILS)	
T2	WHITE STOPBAR
THERMOPLASTIC(4", 120 MILS)	
T8	2 FT. - 6 FT./SP WHITE MINISKIP
TC	10 FT. WHITE SKIP
TD	3 FT. - 9 FT./SP WHITE MINISKIP
TE	WHITE SOLID LANE LINE
TF	10 FT. YELLOW SKIP
TI	YELLOW DOUBLE CENTER
THERMOPLASTIC(4", 90 MILS)	
TA	WHITE EDGELINE
TB	YELLOW EDGELINE
THERMOPLASTIC(8", 120 MILS)	
T13	3 FT. - 9 FT./SP WHITE MINISKIP
THERMOPLASTIC(8", 90 MILS)	
TN	WHITE GORELINE
TP	YELLOW DIAGONAL
THERMOPLASTIC PAVEMENT MARKING CHARACTER (120 MILS)	
UI	ALPHANUMERIC CHAR.
THERMOPLASTIC PAVEMENT MARKING SYMBOLS (90 MILS)	
UA	LEFT TURN ARROW
UB	RIGHT TURN ARROW
UC	STRAIGHT ARROW
UD	COMBO STRAIGHT/LEFT
UE	COMBO STRAIGHT/RIGHT
UP	MERGE ARROW
PERMANENT RAISED PAVEMENT MARKERS	
MA	YELLOW & YELLOW
MB	CRYSTAL & RED
COLD APPLIED PLASTIC (4") Type2 - Permanent High Performance	
CA	WHITE EDGELINE
CC	10 FT. WHITE SKIP
CD	3 FT. - 9 FT./SP WHITE MINISKIP
CI	YELLOW DOUBLE CENTER
COLD APPLIED PLASTIC (8") Type2 - Permanent High Performance	
CP	YELLOW DIAGONAL

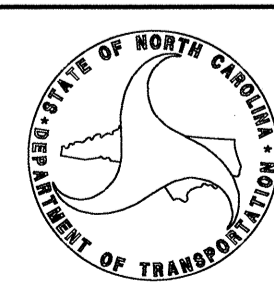
GENERAL NOTES

THE FOLLOWING GENERAL NOTES APPLY AT ALL TIMES FOR THE DURATION OF THE CONSTRUCTION PROJECT, EXCEPT WHEN OTHERWISE NOTED IN THE PLAN, OR DIRECTED BY THE ENGINEER.

- A) INSTALL PAVEMENT MARKINGS AND PAVEMENT MARKERS ON THE FINAL SURFACE AS FOLLOWS:
- | ROAD NAME               | MARKING              | MARKER         |
|-------------------------|----------------------|----------------|
| US 1, US 15/501, NC 211 | THERMOPLASTIC        | RAISED MARKERS |
| BRIDGE                  | COLD APPLIED TYPE II | RAISED MARKERS |
- B) TIE PROPOSED PAVEMENT MARKING LINES TO EXISTING PAVEMENT MARKING LINES. (\*\*)
- C) REMOVE/REPLACE ANY CONFLICTING/DAMAGED PAVEMENT MARKINGS AND MARKERS IN PROJECT LIMITS AND ALSO IN AREAS WHERE NEW MARKINGS/MARKERS EXTEND BEYOND CONSTRUCTION PROJECT LIMITS.
- E) PASSING ZONES WILL BE DETERMINED IN THE FIELD AND MUST BE APPROVED BY THE ENGINEER.
- F) STOPBAR LOCATION AT NON-SIGNALIZED INTERSECTIONS MAY BE ADJUSTED AS DIRECTED BY THE ENGINEER.
- G) REMOVE ALL RESIDUE AND SURFACE LAITANCE BY ACCEPTABLE METHODS ON THE BRIDGE DECK(S) PRIOR TO PLACING COLD APPLIED PLASTIC PAVEMENT MARKING.

PLAN PREPARED BY: N.C.D.O.T. SIGNING AND DELINEATION UNIT

SUSAN B KUNZ SIGNING & DELINEATION REGIONAL ENGINEER  
SAMUEL COLEMAN SIGNING & DELINEATION PROJECT DESIGN ENGINEER



INDEX

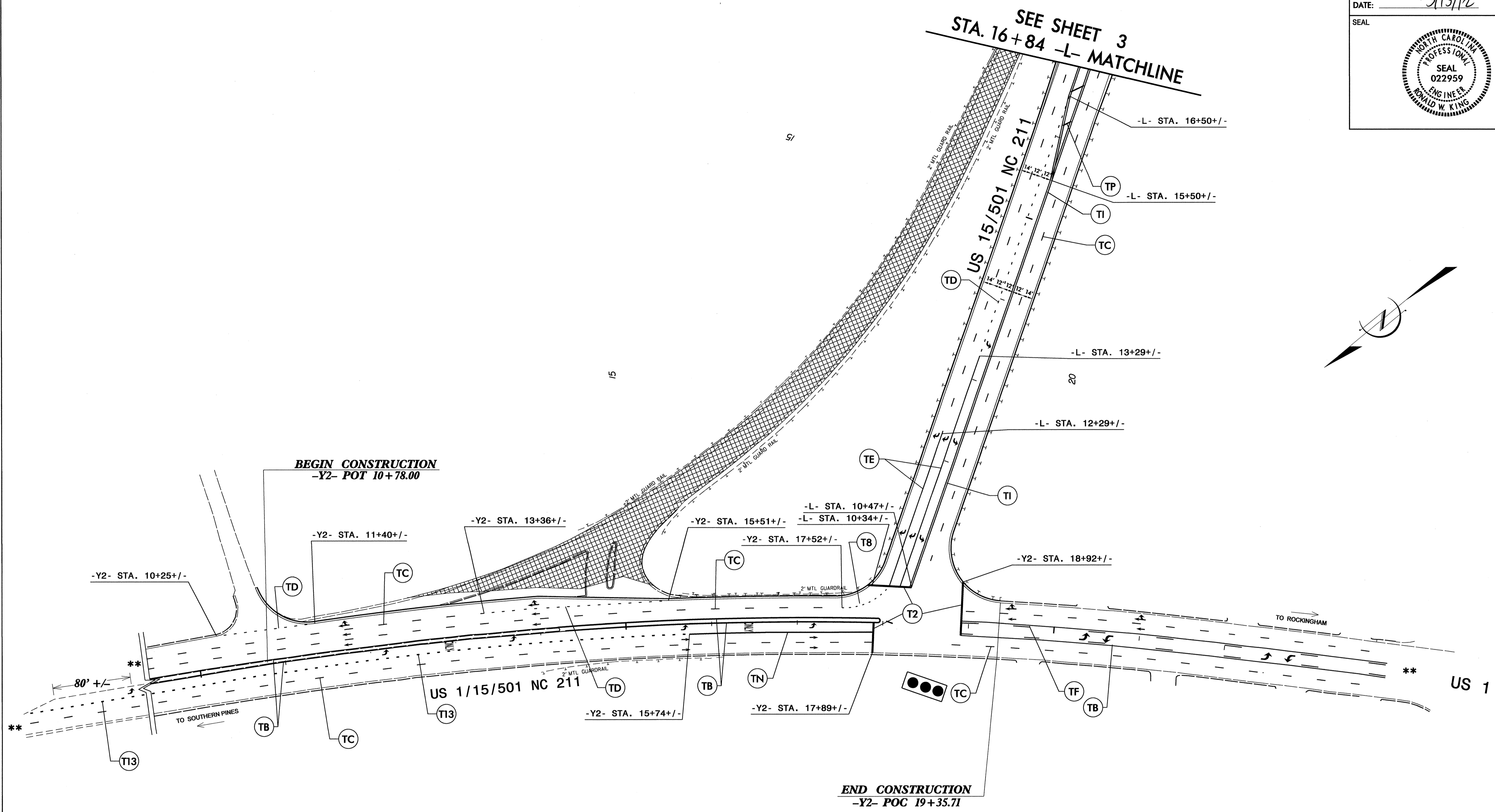
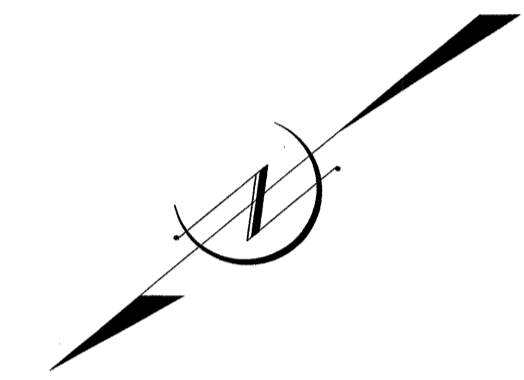
SHEET NO.	DESCRIPTION
PMP-1	PAVEMENT MARKING PLAN TITLE AND SCHEDULE SHEET
PMP-2-3	PAVEMENT MARKING DETAILS

12-MAR-2012 15:56:56 P:\TIP-Proj\2012\B-3680\Traffic\Signing\CADD\Signing Layout Plans\PM\ Pavement Marking Seed.dgn  
scoleman AT 1E247878

T.I.P.: B-3680

CONTRACT: 202231

TIP NO. B-3680	SHEET NO. PMP-2
APPROVED: <i>RW7</i>	
DATE: 3/13/12	
SEAL	



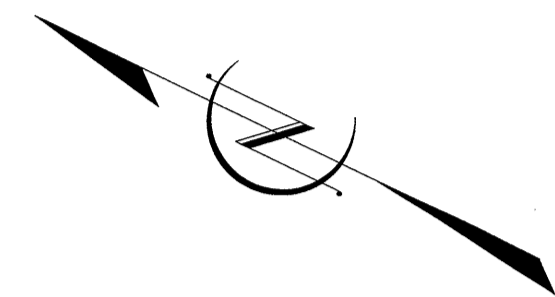
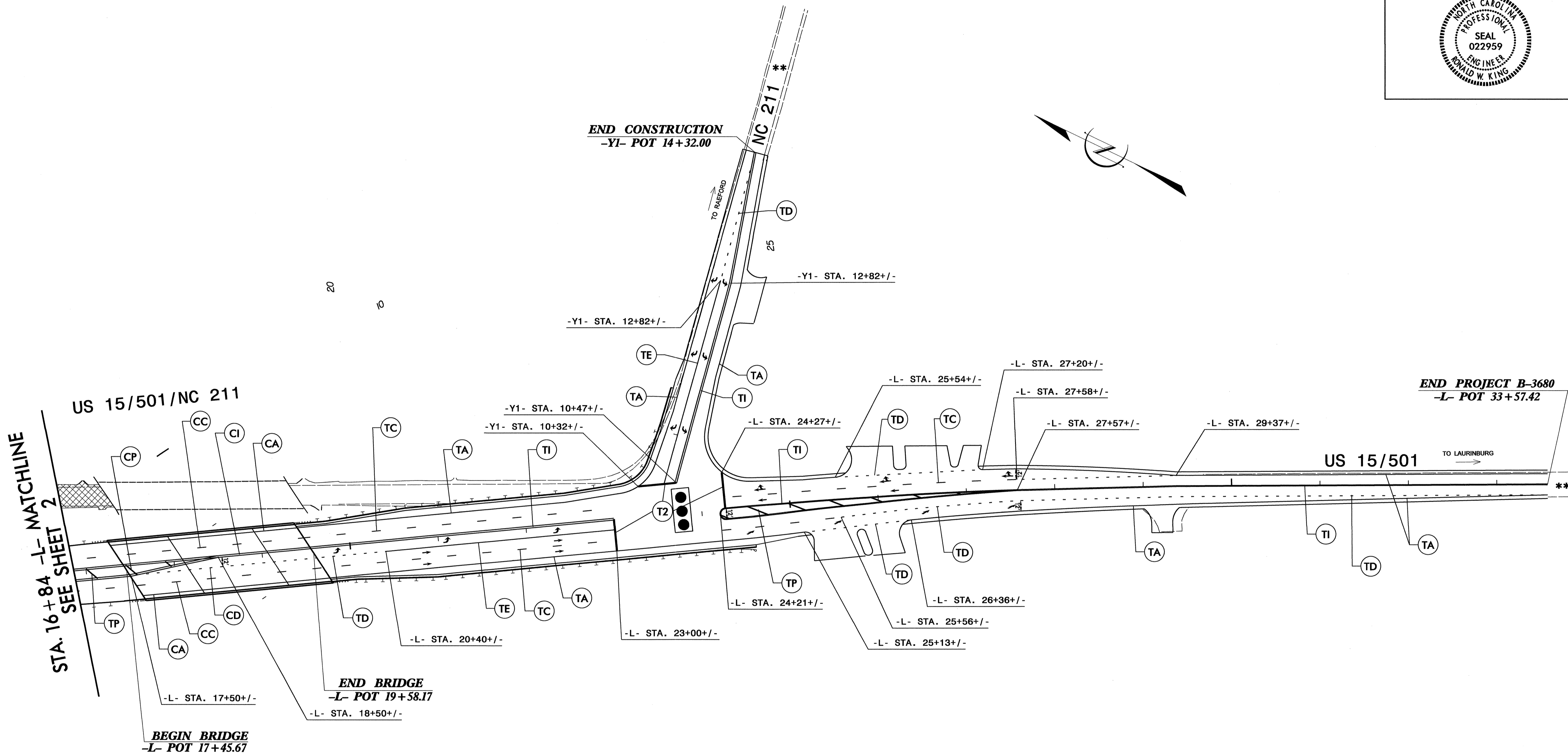
**SEE GENERAL NOTE C FOR REMOVAL OF EXISTING MARKINGS OUTSIDE OF CONSTRUCTION LIMITS.**

**\*\* TIE TO EXISTING MARKINGS**

**PAVEMENT MARKING DETAIL**

12-MAR-2012 16:00  
 P:\TIP-Pro-jects-B-3680\Traffic\Signing\CADD\Signing Layout Plans\B-3680\_PMP-sh12.dgn  
 scoleman AT 1E247878

TIP NO. B-3680	SHEET NO. PMP-3
APPROVED: <i>[Signature]</i>	
DATE: 3/21/12	
SEAL	



STA. 16+84 -L- MATCHLINE  
 SEE SHEET 2

US 15/501/NC 211

US 15/501

TO LAURINBURG

END CONSTRUCTION  
-YI- POT 14+32.00

END BRIDGE  
-L- POT 19+58.17

BEGIN BRIDGE  
-L- POT 17+45.67

END PROJECT B-3680  
-L- POT 33+57.42

\*\* TIE TO EXISTING MARKINGS

PAVEMENT MARKING DETAIL

2:\MFS\2012\224\B3680\Traffic\Signing\CADD\Signing Layout Plans\B3680\_PMP\_sht3.dgn  
 JSColeman 11/27/11