

STATE	PROJECT WBS	SHEET NUMBER
NC	12CR.10551.10	1

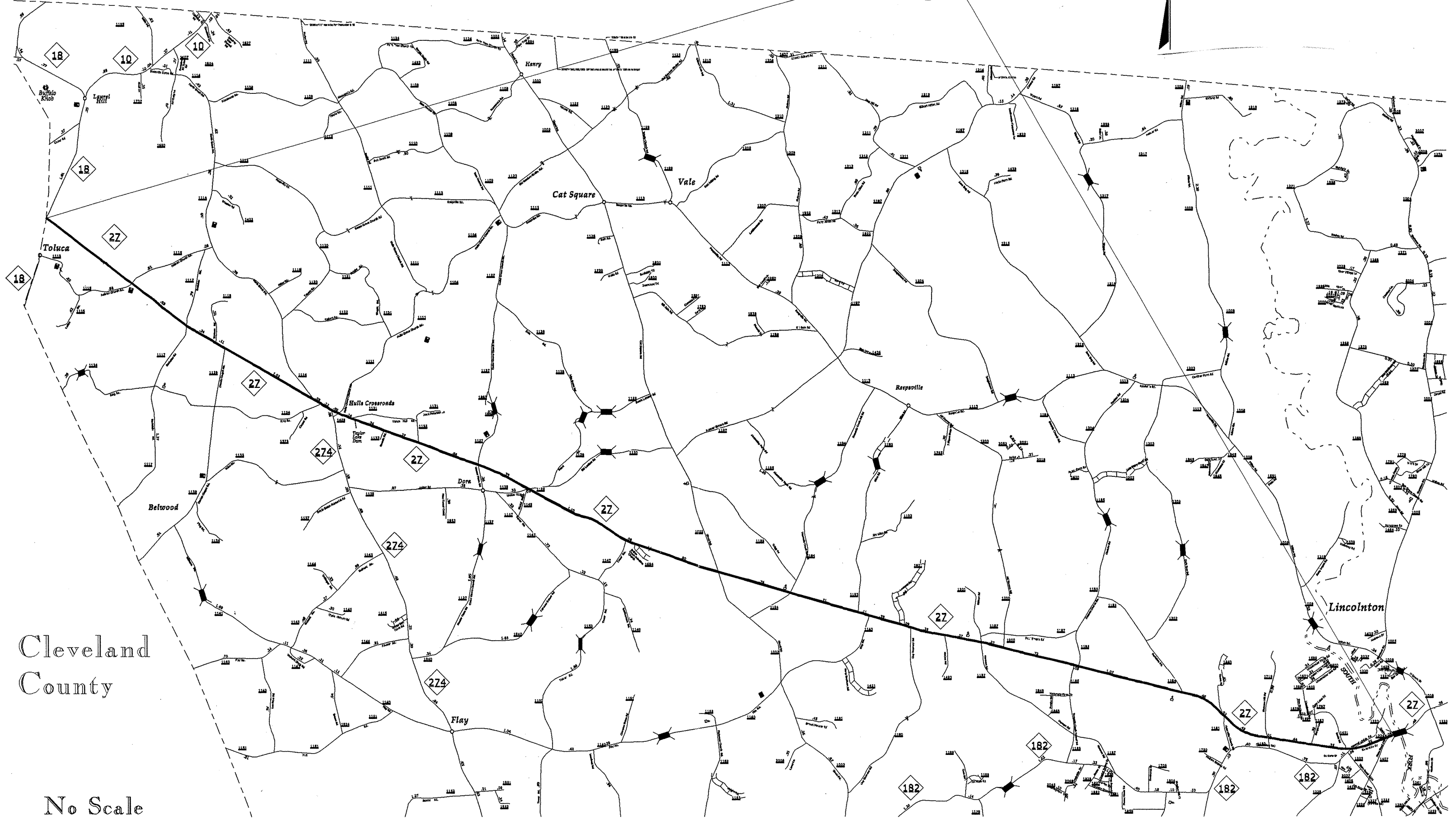
2012-2013

Resurfacing Map

LINCOLN COUNTY NC



1



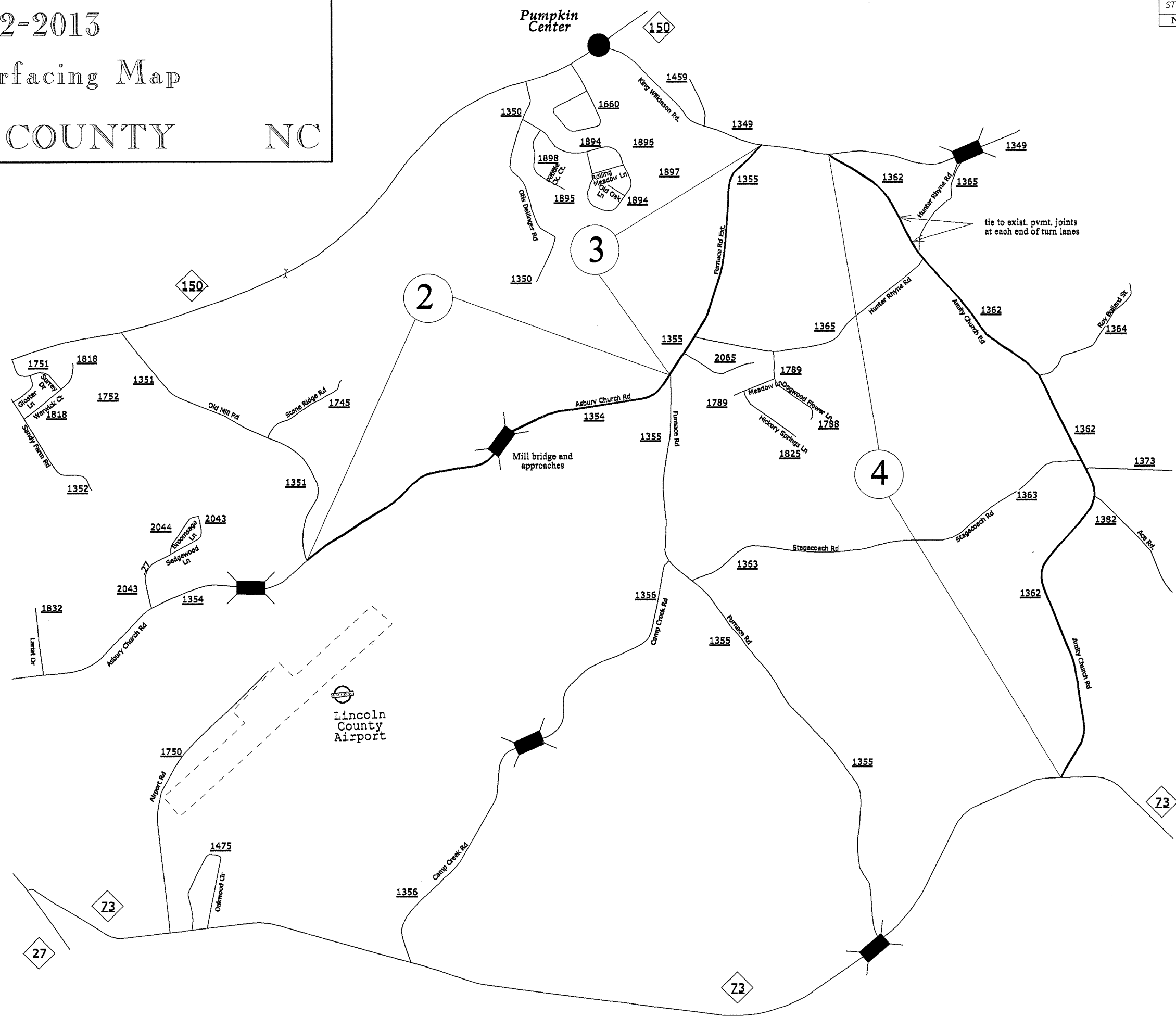
G. BRITAIN
Drawn by:

Cleveland
County

No Scale

STATE	PROJECT WBS	SHEET NUMBER
NC	12CR.20551.14	2

2012-2013
Resurfacing Map
LINCOLN COUNTY NC



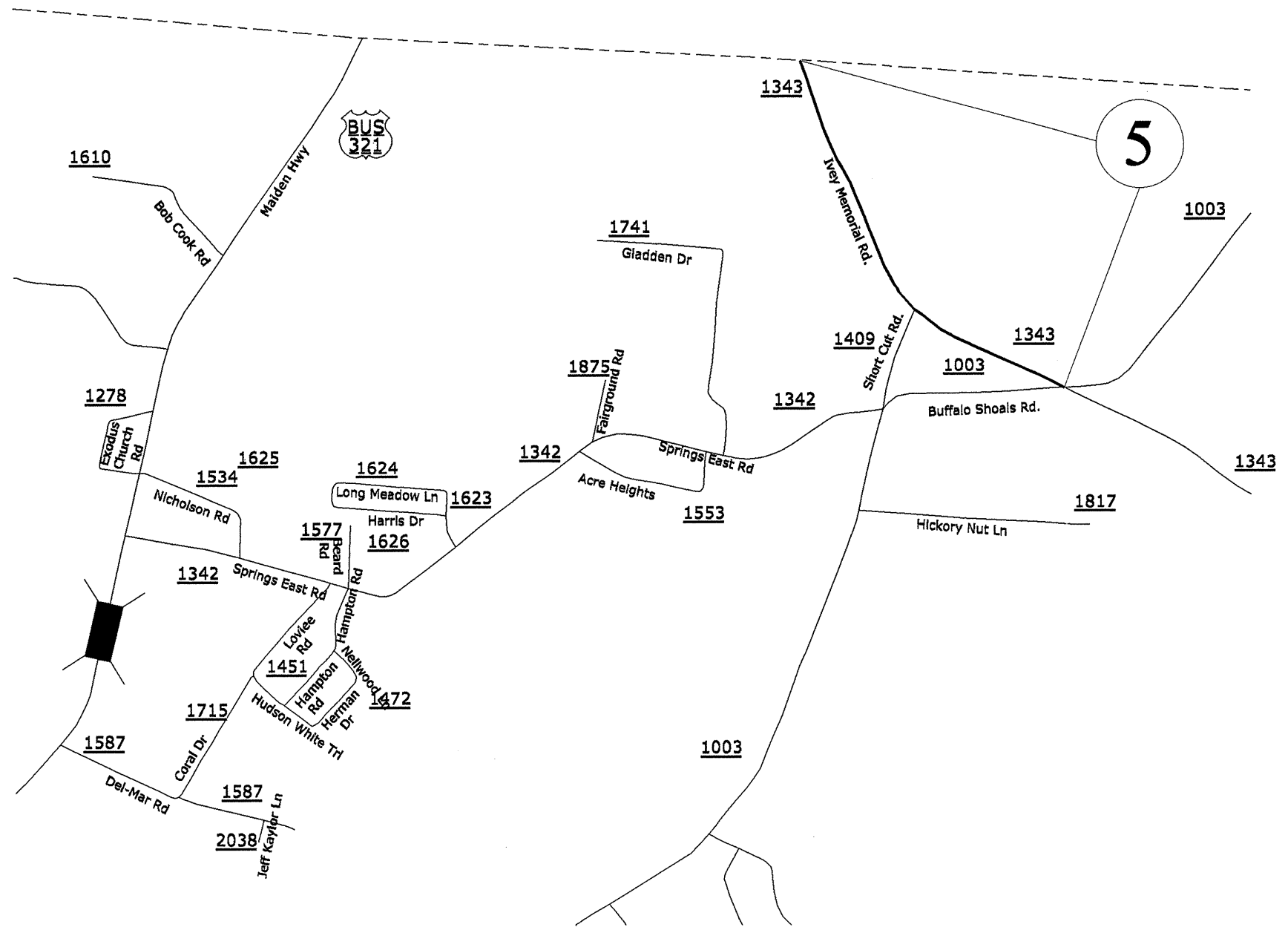
G. BRITAIN
Drawn by:

No Scale

STATE	PROJECT WBS	SHEET NUMBER
NC	12CR.20561.14	3



Catawba County

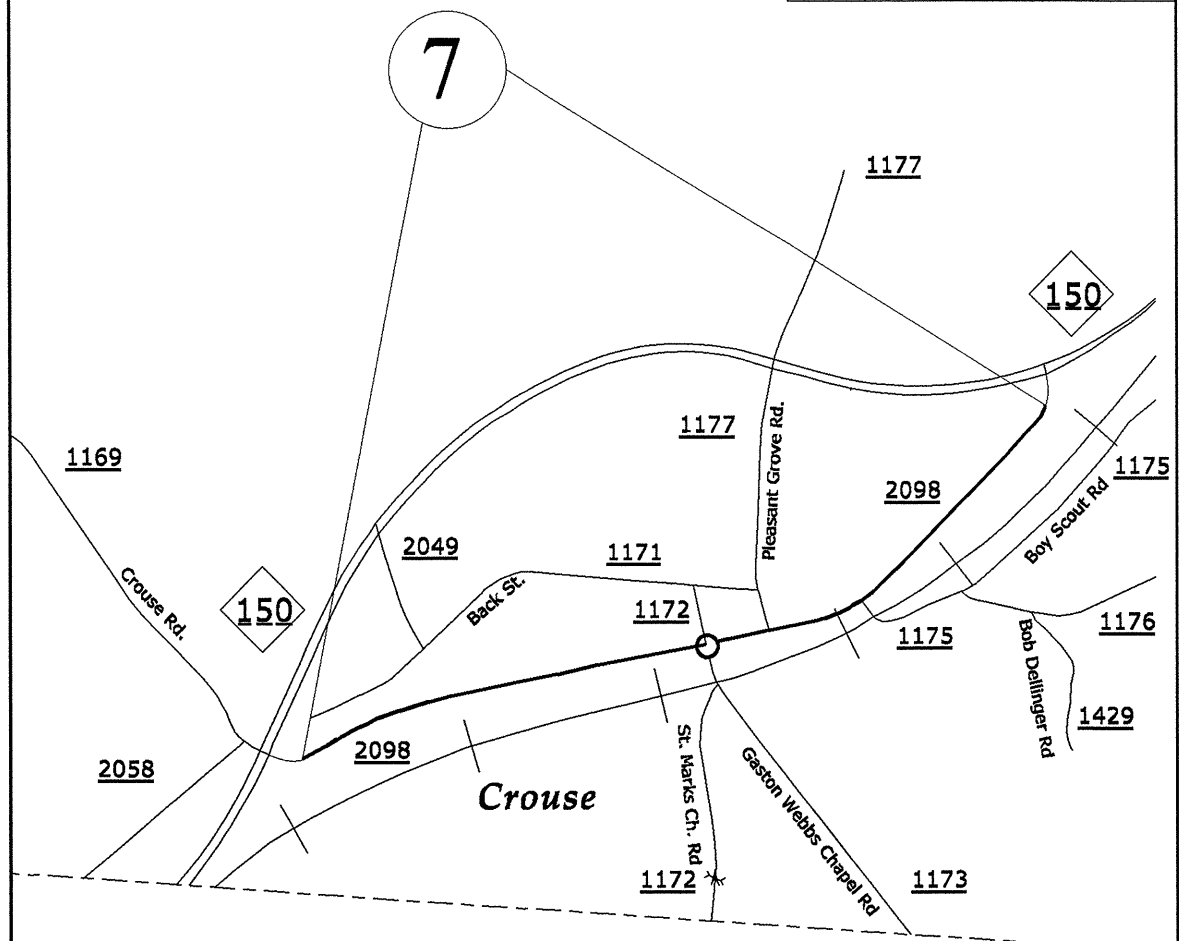


No Scale

G. BRITAIN
Drawn by:



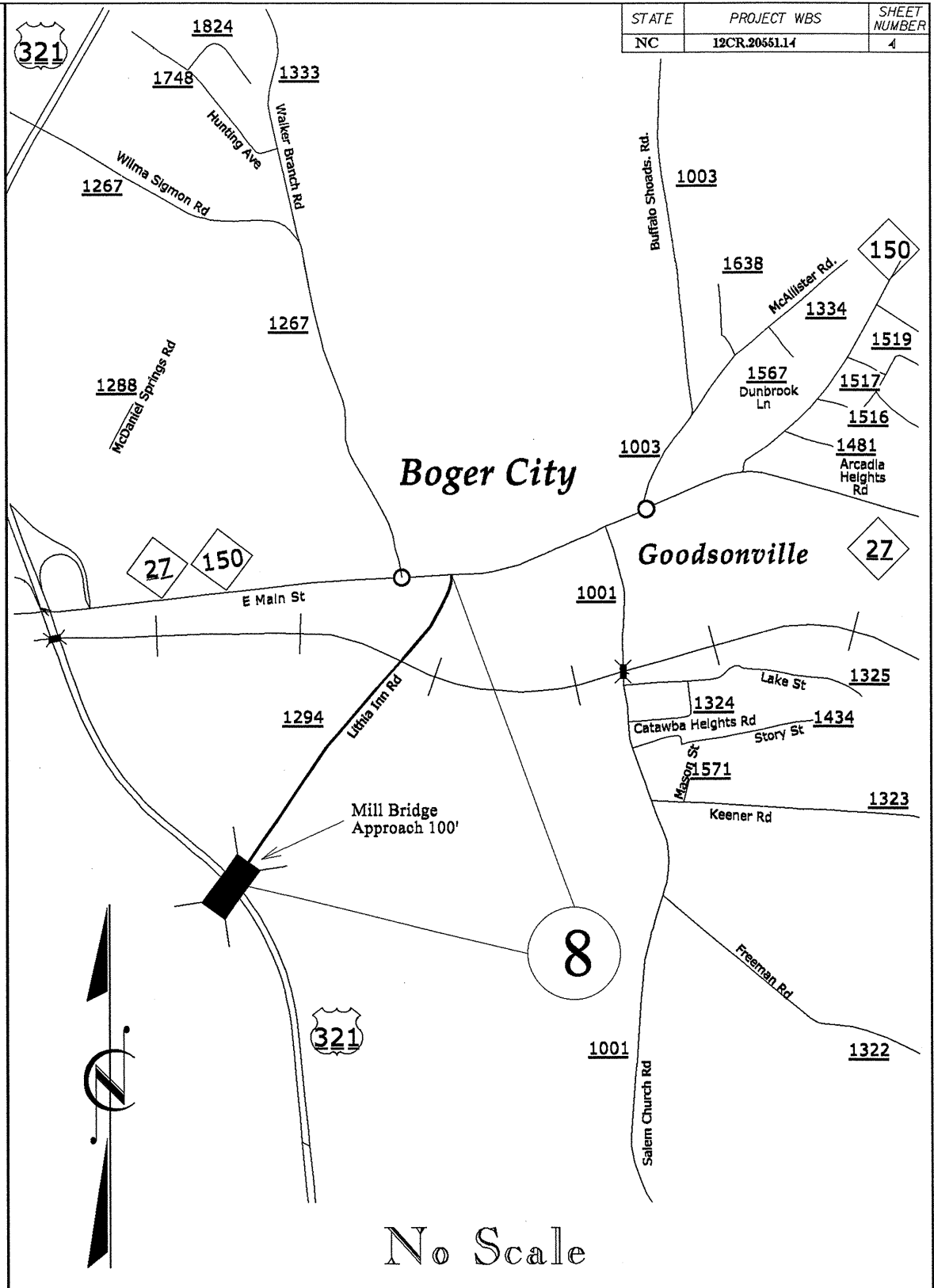
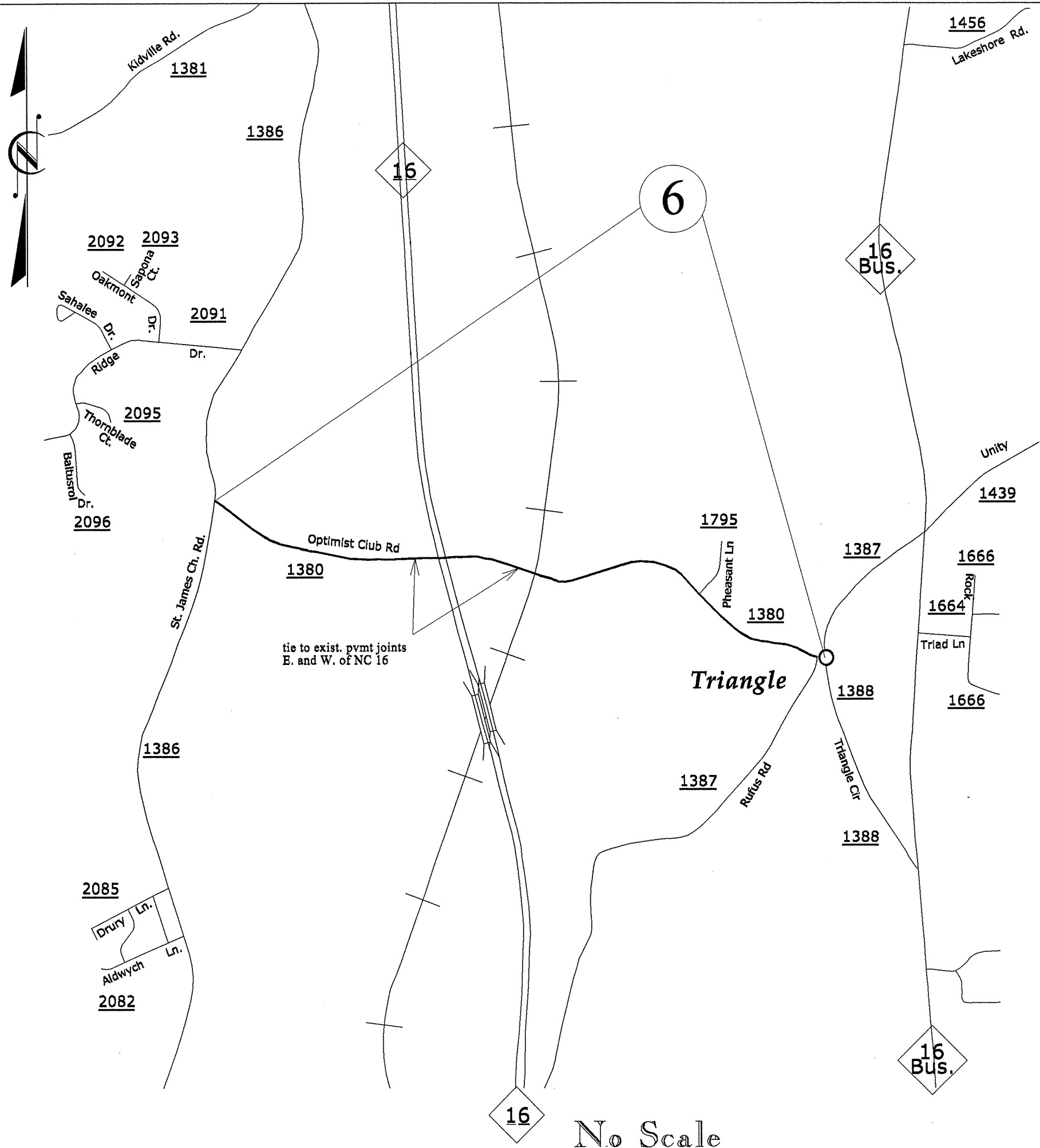
Gaston County



No Scale

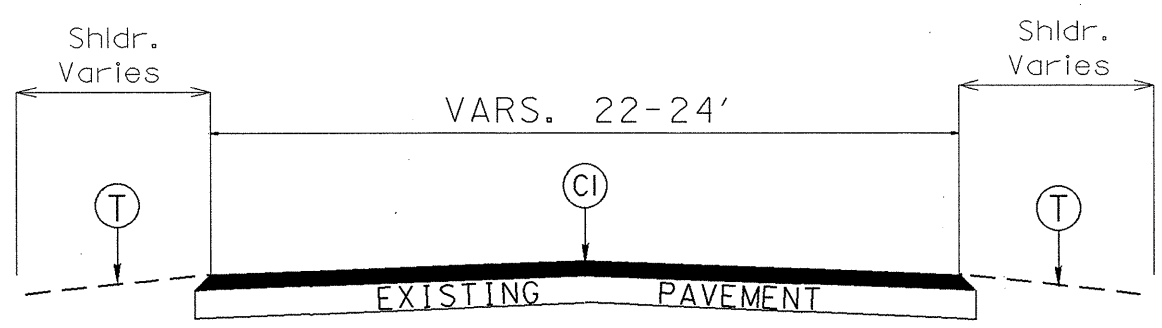
2012-2013
Resurfacing Map
LINCOLN COUNTY NC

STATE	PROJECT WBS	SHEET NUMBER
NC	12CR.20651.14	4

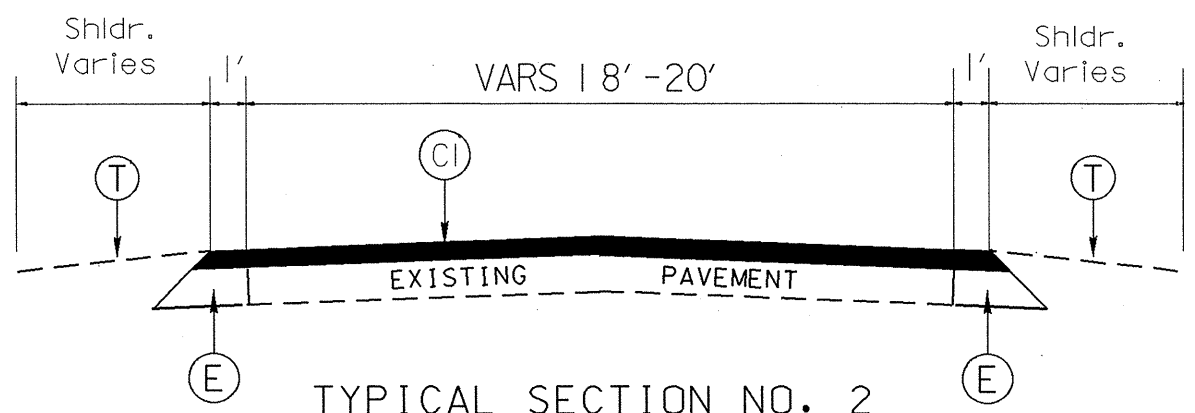


G. BRITTAIN
Drawn by:

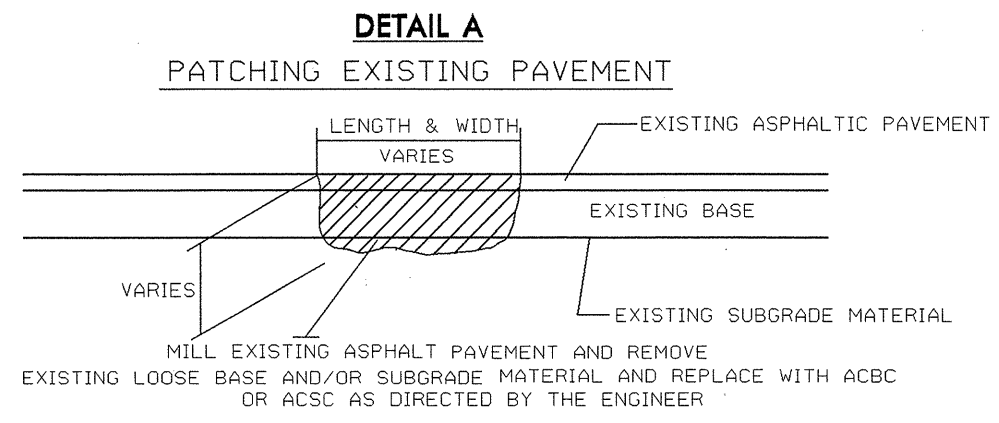
2012-2013
Resurfacing Map
LINCOLN COUNTY NC



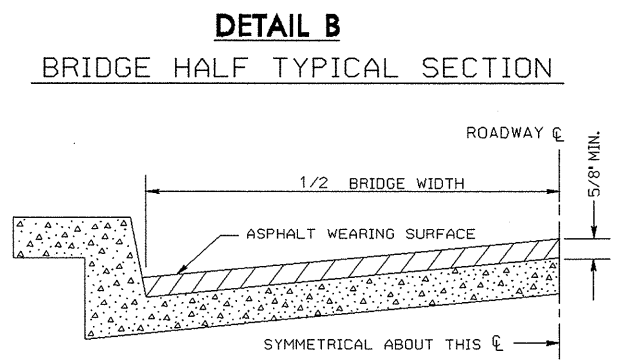
TYPICAL SECTION NO. 1
 MAP # 5 - (entire map)
 MAP # 7 - 0+00 to 22+00
 40+50 to 62+25
 MAP # 8 - (entire map)



TYPICAL SECTION NO. 2
 Map # 2 - (entire map)
 Map # 3 - (entire map)
 Map # 4 - (entire map)
 Map # 6 - (entire map)



PAVEMENT SCHEDULE	
C1	PROP. APPROX. 1½" ASPHALT CONCRETE SURFACE COURSE, TYPE S9.5B, AT AN AVERAGE RATE OF 168 LBS. PER SQ. YD.
C2	PROP. APPROX. ¾" ASPHALT CONCRETE SURFACE COURSE, TYPE S4.75A, AT AN AVERAGE RATE OF 85 LBS. PER SQ. YD.
E	PROP. APPROX. 8" OF ASPHALT BASE COURSE, TYPE B 25.0B, AT AN AVERAGE RATE OF 456 LBS PER SQ. YD. IN EACH OF TWO LIFTS
T	AGGREGATE SHOULDER BORROW (SHOULDER RECONSTRUCTION)
V	MILL ASPHALT PAVEMENT APPROX. 1.5" IN DEPTH
Y1	PROP. APPROX. 0 - 1.5" OF INCIDENTAL MILLING
Z	MILL ASPHALT PAVEMENT APPROX. 3.0" IN DEPTH



FOR BRIDGES WITH FLOOR DRAINS, CARE SHALL BE EXERCISED IN PLACING THE WEARING SURFACE AROUND FLOOR DRAINS SO AS NOT TO HINDER EFFECTIVE DRAINAGE. ALL DRAINS SHALL BE LEFT OPEN.

THE PROPOSED WEARING SURFACE SHALL VARY IN THICKNESS AS NECESSARY TO PROVIDE A SMOOTH RIDING SURFACE. A THICKNESS OF NOT LESS THAN 5/8" SHALL BE PROVIDED, THE MAXIMUM THICKNESS SHALL PREFERABLY BE 1-1/2" UNLESS IT IS IMPRACTICAL TO PROVIDE A SMOOTH RIDING SURFACE OTHERWISE.

NOTES

ALL UNPAVED S.R. ROADS TO BE SURFACED 50' FROM EDGE OF PAVEMENT OF MAIN PROJECT.
 ALL PAVED S.R. ROADS TO BE RESURFACED TO THE ENDS OF THE RADII, OR AS DIRECTED BY THE ENGINEER.
 EDGES, PAVEMENT WIDENING, INTERSECTIONS AND BRIDGE FLARES ARE INCLUDED IN THE TABLE OF QUANTITIES.
 SHOULDERS AND DITCHES ARE TO BE CONSTRUCTED BY OTHERS UNLESS OTHERWISE NOTED.
 BRIDGES TO BE RESURFACED AT LOCATIONS AND TO DEPTH AS DIRECTED BY THE ENGINEER.

General Notes:

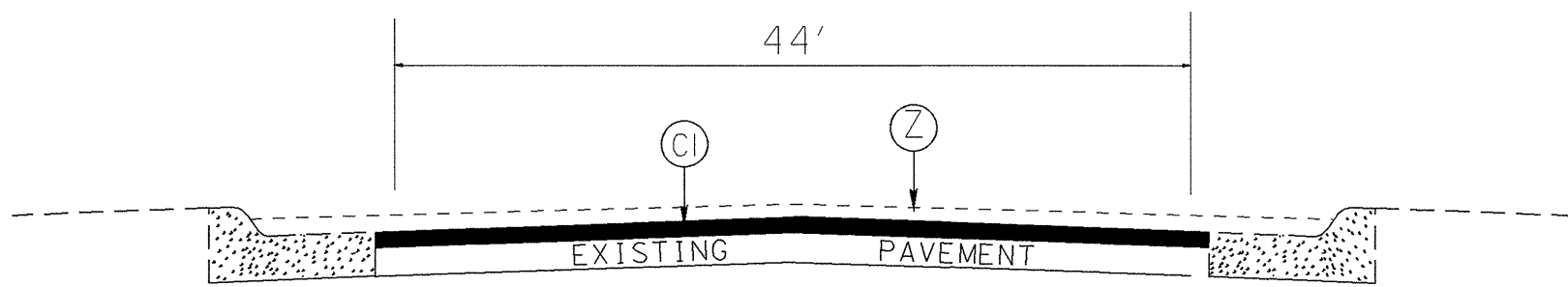
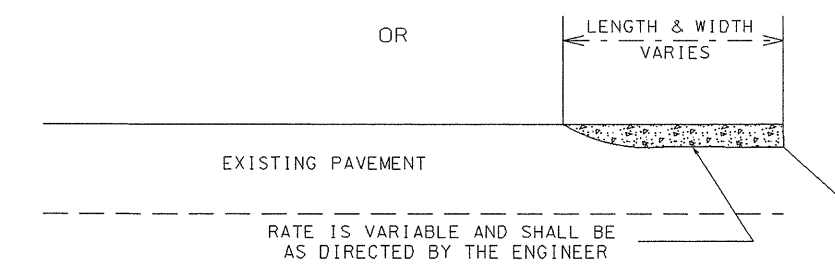
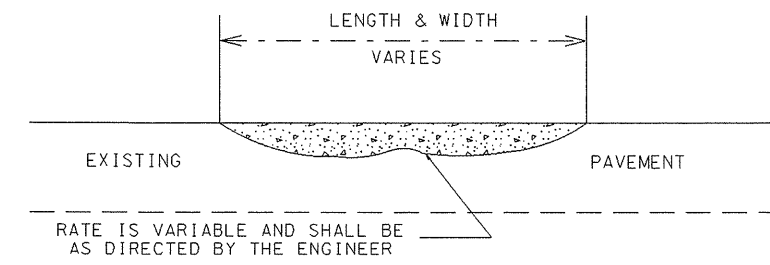
- * Pavement edge slopes are 1:1 unless specified otherwise.
- * Mill bridge approaches 100' to provide a smooth transition or as directed by the Engineer.

2012 - 2013
 Resurfacing Program
 Typical Sections
 Lincoln County NC

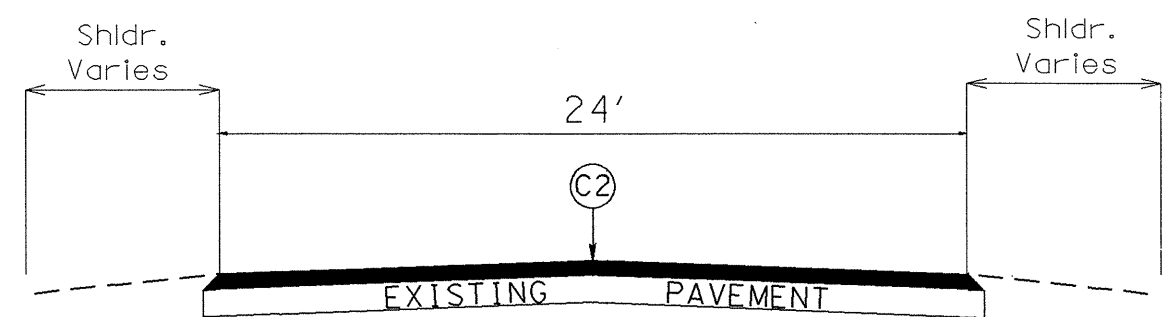
Checked by: _____
 Drawn by: G. Brittain

DETAIL C

ASPHALT CONCRETE SURFACE COURSE
TYPE S9.5B. (LEVELING COURSE)



TYPICAL SECTION NO. 3
MAP # 7 - 22+00 TO 40+50



TYPICAL SECTION NO. 4
MAP # 1 - (entire map)

PAVEMENT SCHEDULE	
C1	PROP. APPROX. 1½" ASPHALT CONCRETE SURFACE COURSE, TYPE S9.5B, AT AN AVERAGE RATE OF 168 LBS. PER SQ. YD.
C2	PROP. APPROX. ¾" ASPHALT CONCRETE SURFACE COURSE, TYPE S4.75A, AT AN AVERAGE RATE OF 85 LBS. PER SQ. YD.
E	PROP. APPROX. 8" OF ASPHALT BASE COURSE, TYPE B 25.0B, AT AN AVERAGE RATE OF 456 LBS PER SQ. YD. IN EACH OF TWO LIFTS
T	AGGREGATE SHOULDER BORROW (SHOULDER RECONSTRUCTION)
V	MILL ASPHALT PAVEMENT APPROX. 1.5" IN DEPTH
Y1	PROP. APPROX. 0 - 1.5" OF INCIDENTAL MILLING
Z	MILL ASPHALT PAVEMENT APPROX. 3.0" IN DEPTH

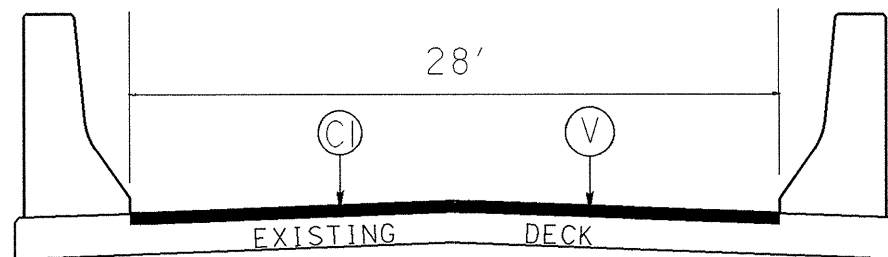
General Notes:

- * Pavement edge slopes are 1:1 unless specified otherwise.
- * Mill bridge approaches 100' to provide a smooth transition or as directed by the Engineer.

2012 - 2013
Resurfacing Program
Typical Sections
Lincoln County NC

Checked by:

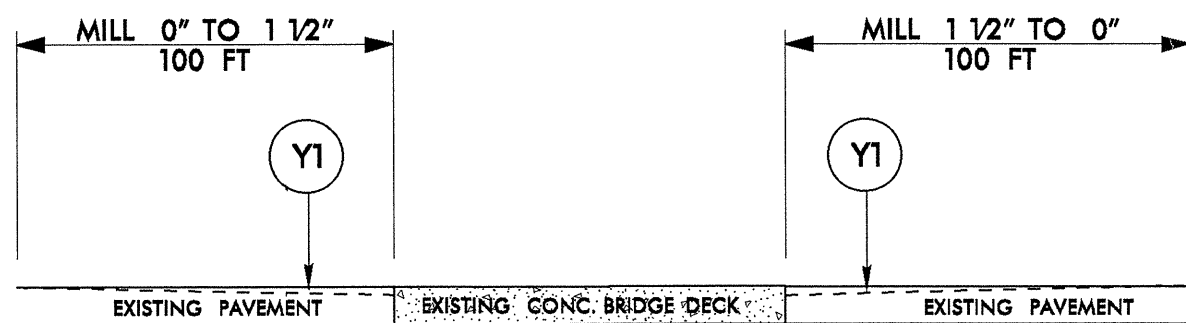
Drawn by: G. Brittain



BRIDGE SECTION

Map # 2 - Bridge # 27

**DETAIL D
MILLING BRIDGE APPROACHES**



Map # 1 - Bridge # 23 - Mill W. Approach
 Map # 1 - Bridge # 4 - Mill Both Approaches
 Map # 2 - Bridge # 27- Mill both approaches
 Map # 8 - Bridge # 268 - Mill N. Approach

PAVEMENT SCHEDULE	
C1	PROP. APPROX. 1 1/2" ASPHALT CONCRETE SURFACE COURSE, TYPE S9.5B, AT AN AVERAGE RATE OF 168 LBS. PER SQ. YD.
C2	PROP. APPROX. 3/4" ASPHALT CONCRETE SURFACE COURSE, TYPE S4.75A, AT AN AVERAGE RATE OF 85 LBS. PER SQ. YD.
E	PROP. APPROX. 8" OF ASPHALT BASE COURSE, TYPE B 25.0B, AT AN AVERAGE RATE OF 456 LBS PER SQ. YD. IN EACH OF TWO LIFTS
T	AGGREGATE SHOULDER BORROW (SHOULDER RECONSTRUCTION)
V	MILL ASPHALT PAVEMENT APPROX. 1.5" IN DEPTH
Y1	PROP. APPROX. 0 - 1.5" OF INCIDENTAL MILLING
Z	MILL ASPHALT PAVEMENT APPROX. 3.0" IN DEPTH

General Notes:

- * Pavement edge slopes are 1:1 unless specified otherwise.
- * Mill bridge approaches 100' to provide a smooth transition or as directed by the Engineer.

2012 - 2013
 Resurfacing Program
 Typical Sections
 Lincoln County NC

Checked by:

Drawn by: G.Briffain

PROJECT NO.	SHEET NO.	TOTAL NO.
12cr.10551.10, 12cr.20551.14	8	9

SUMMARY OF QUANTITIES

PROJECT NO	COUNTY	MAP NO	ROUTE	DESCRIPTION	TYP	FINAL SURFACE TESTING REQUIRED	LENGTH MI	WIDTH FT	AGGREGATE SHOULDER BORROW TON	INCIDENTAL STONE BASE TONS	SHOULDER RECONSTRUCTION SMI	1.5" MILLING	3" MILLING SY	INCIDENTAL MILLING SY	BASE COURSE, B25.0B TONS	SURFACE COURSE, S9.5B TONS	LEVELING COURSE, S9.5B TONS	SURFACE COURSE, S4.75A TON	ASPHALT BINDER FOR PLANT MIX TONS	PATCHING EXISTING PAVEMENT TONS	RETROFIT EXST. CURB RAMP EA.	MANHOLES EA	METER OR VALVE BOX EA	
12cr.10551.10	Lincoln	1	NC 27	FROM S. FORK RIVER BRDG. TO NC 18	4	NO	14.81	24		600				1,000				9,077	617	1,750				
TOTAL FOR PROJ NO. 12cr.10551.10							14.81			600				1,000				9,077	617	1,750				
12cr.20551.14	Lincoln	2	SR 1354 (ASBURY CH. RD)	FROM SR 1351 TO SR 1355	2	NO	1.71	21	130	100	3.42	250		500	1,500	1,958	400		209	750				
12cr.20551.14	Lincoln	3	SR 1355 (FURNACE RD EXT)	FROM SR 1354 TO SR 1349	2	NO	1	21	75	40	2.00			225	790	1,145	200		116	200				
12cr.20551.14	Lincoln	4	SR 1362 (AMITY CH RD)	FROM NC 73 TO SR 1349 (EXCEPTING 0.25 MI. AT ELEM. SCHOOL)	2	NO	2.8	21	212	150	5.60			450	2,425	3,206	500		332	600				
12cr.20551.14	Lincoln	5	SR1343 (IVEY MEM CH RD)	FROM SR 1003 TO CATAWBA CO	1	NO	0.9	22	35	40	1.80			450		1,079	100		71	200				
12cr.20551.14	Lincoln	6	SR 1380 (OPTIMIST CLUB RD)	FROM SR 1386 TO SR 1388 EXCEPTING NEWLY PAVED PORTION AT NC 16.	2	NO	1	22	75	40	2.00			450	900	1,199	120		119	250				
12cr.20551.14	Lincoln	7	SR 2098 (OLD NC 150 CROUSE)	FROM EXST. PVMT. JT 250' SE OF NC 150 . TO EXST. PVMT JT. 400' SW OF NC 150	1,3	NO	1.18	vars. 24-44	64	40	1.70		9,000	525		1,902	200		127	750	6	1	4	
12cr.20551.14	Lincoln	8	SR 1294 (LITHIA INN RD)	FROM US 321 OVERPASS TO NC 27	1	NO	0.77	24	54	40	1.54			525		1,007	100		67	300	2		1	
TOTAL FOR PROJ NO. 12cr.20551.14							9.36		645	450	18.06	250	9,000	3,125	5,615	11,496	1,620		1,041	3,050	8	1	5	
GRAND TOTAL							24.17		645	1,050	18.06	250	9,000	4,125	5,615	11,496	1,620		9,077	1,658	4,800	8	1	5

PROJECT NO.	SHEET NO.	TOTAL NO.
12cr.10551.10, 12cr.20551.14	9	9

THERMOPLASTIC AND PAINT QUANTITIES

PROJECT NO	COUNTY	MAP NO	ROUTE	DESCRIPTION	LENGTH	WIDTH	4685000000-E	4686000000-E		4705000000-E	4710000000-E	4721000000-E		4725000000-E			4810000000-E		4905000000-N	
							4" X 90 M WHITE THERMO LF	4" X 120 M YELLOW THERMO LF	4" X 120 M WHITE THERMO LF	16" X 120 M WHITE THERMO LF	24" X 120 M WHITE THERMO LF	THERMO MSG SCHOOL 120 M EA	THERMO RXR 120 M EA	THERMO LT ARROW 90 M EA	THERMO STR ARROW 90 M EA	THERMO STR & RT ARROW 90 M EA	4" WHITE PAINT LF	4" YELLOW PAINT LF	SNOW PLOWABLE MARKERS EA	
12cr.10551.10	Lincoln	1	NC 27 WEST	FROM S. FORK RIVER BRDG. TO NC 18	14.81	24	157,000	157,000	150		300	24		4	1	2			1,000	
TOTAL FOR PROJ NO. 12cr.10551.10					14.81		157,000	157,000	150		300	24		4	1	2			1,000	
							157,150				24		7							
12cr.20551.14	Lincoln	2	SR 1354 (ASBURY CH. RD)	FROM SR 1351 TO SR 1355	1.71	21												36,000	35,800	
12cr.20551.14	Lincoln	3	SR 1355 (FURNACE RD EXT)	FROM SR 1354 TO SR 1349	1	21												21,250	21,150	
12cr.20551.14	Lincoln	4	SR 1362 (AMITY CH RD)	FROM NC 73 TO SR 1349 (EXCEPTING 0.25 MI. AT ELEM. SCHOOL)	2.8	21					100	12						59,250	58,850	
12cr.20551.14	Lincoln	5	SR1343 (IVEY MEM CH RD)	FROM SR 1003 TO CATAWBA CO	0.9	22												19,150	19,000	
12cr.20551.14	Lincoln	6	SR 1380 (OPTIMIST CLUB RD)	FROM SR 1386 TO SR 1388 EXCEPTING NEWLY PAVED PORTION AT NC 16.	1	22				100	50		4					21,500	21,250	
12cr.20551.14	Lincoln	7	SR 2098 (OLD NC 150 CROUSE)	FROM EXST. PVMT. JT 250' SE OF NC 150 . TO EXST. PVMT JT. 400' SW OF NC 150	1.18	vars.24-44	9,000	13,250	200					4						100
12cr.20551.14	Lincoln	8	SR 1294 (LITHIA INN RD)	FROM US 321 OVERPASS TO NC 27	0.77	24				100	90		4					16,250	16,000	
TOTAL FOR PROJ NO. 12cr.20551.14					9.36		9,000	13,250	200	200	240	12	8	4				173,400	172,050	100
							13,450				20		4			345,450				
GRAND TOTAL					24.17		166,000	170,250	350	200	540	36	8	8	1	2		173,400	172,050	1,100
							170,600				44		11			345,450				