

05/08/99

| | |
|------------|-----------|
| T.I.P. NO. | SHEET NO. |
| B-4949 | UC-1 |

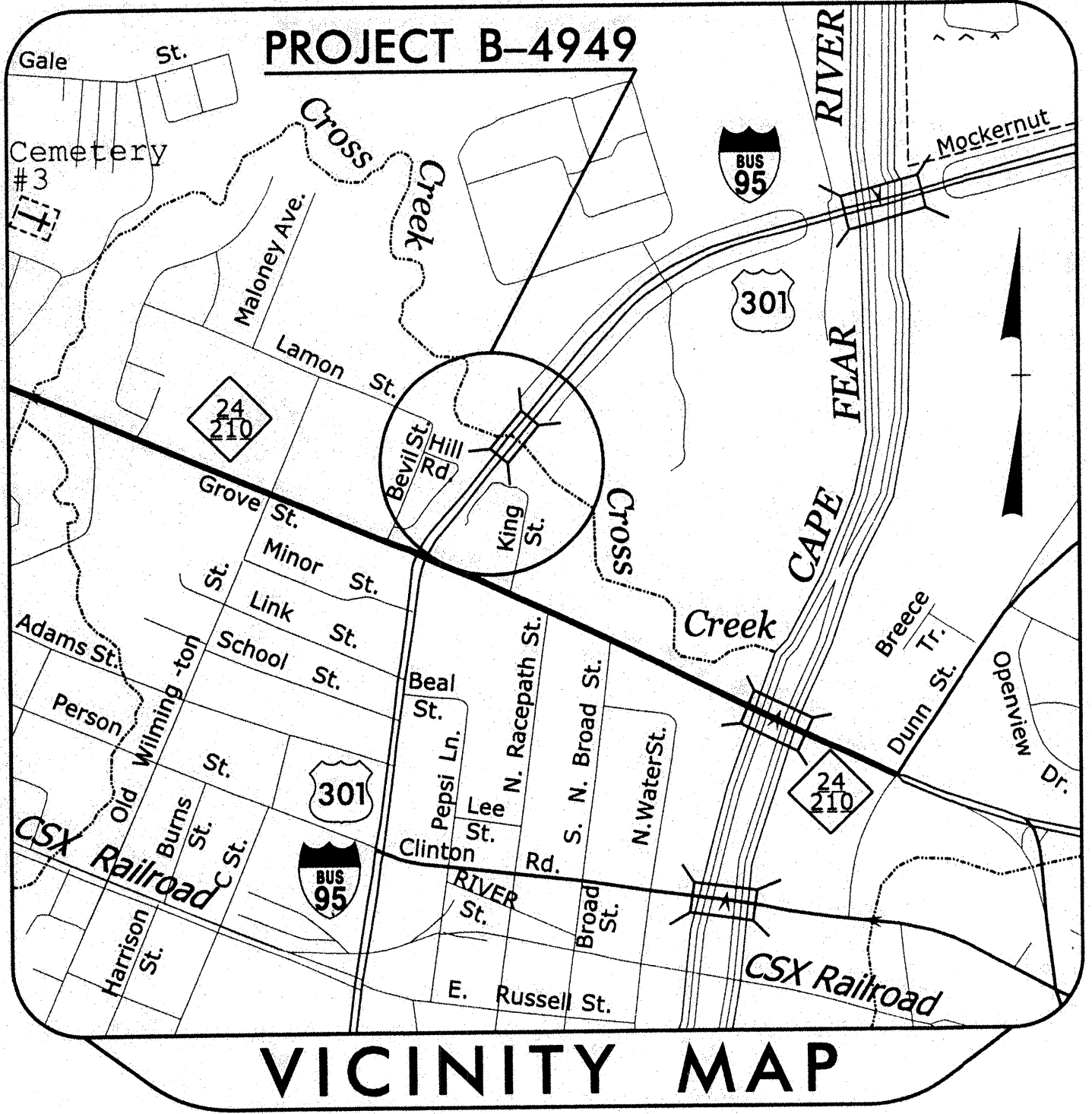
See Sheet 1-A For Index of Sheets
See Sheet 1-B For Conventional Symbols

STATE OF NORTH CAROLINA
DIVISION OF HIGHWAYS

**UTILITY CONSTRUCTION PLANS
CUMBERLAND COUNTY**

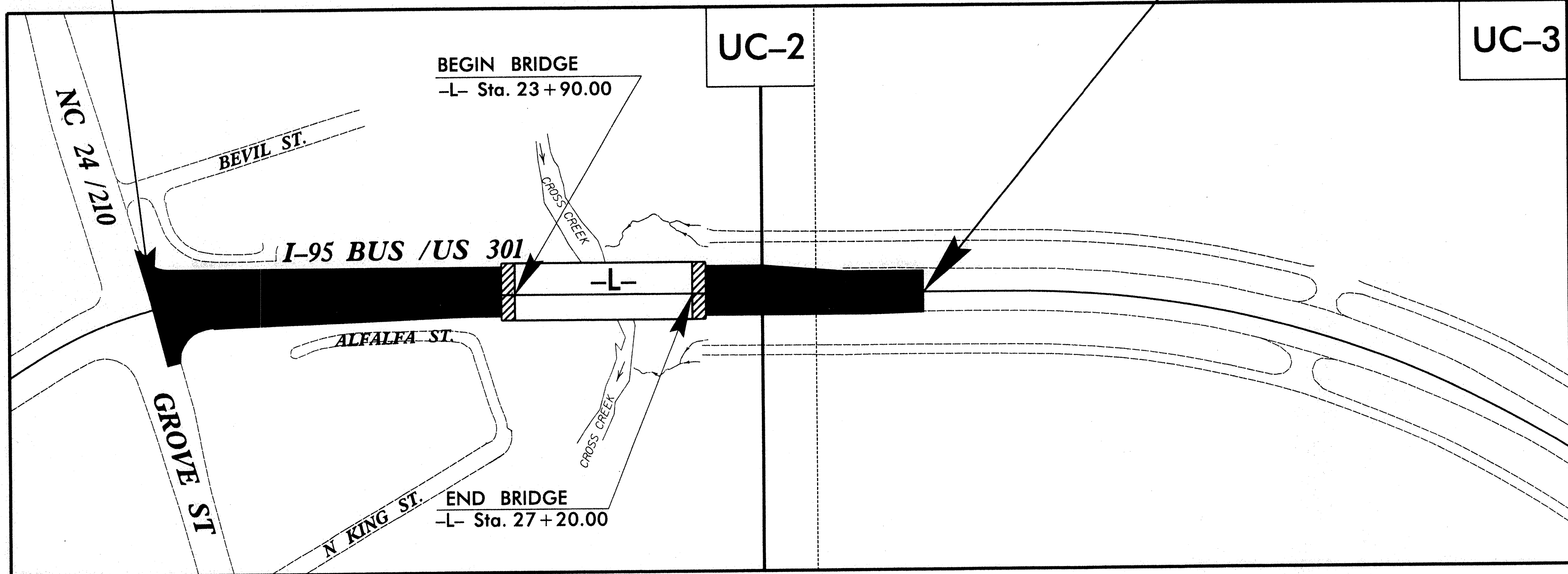
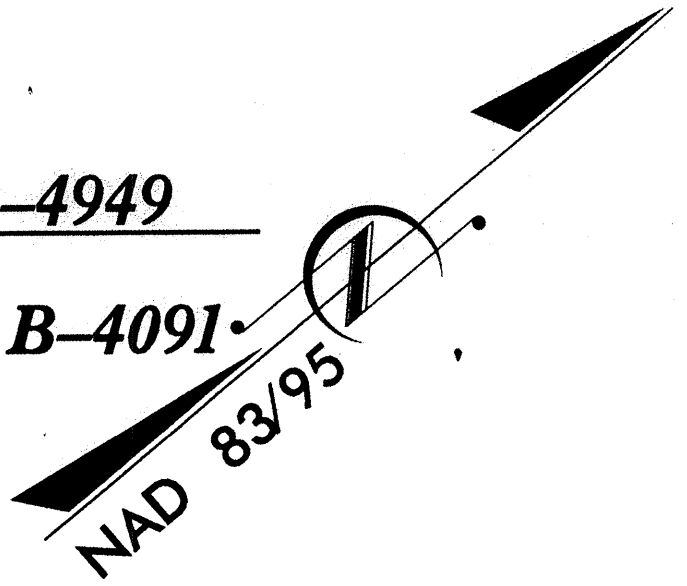
LOCATION: BRIDGE NO. 61 OVER CROSS CREEK ON I-95 BUSINESS/US 301
TYPE OF WORK: RELOCATION OF WATER AND SEWER FORCE MAIN LINES

TIP PROJECT: B-4949



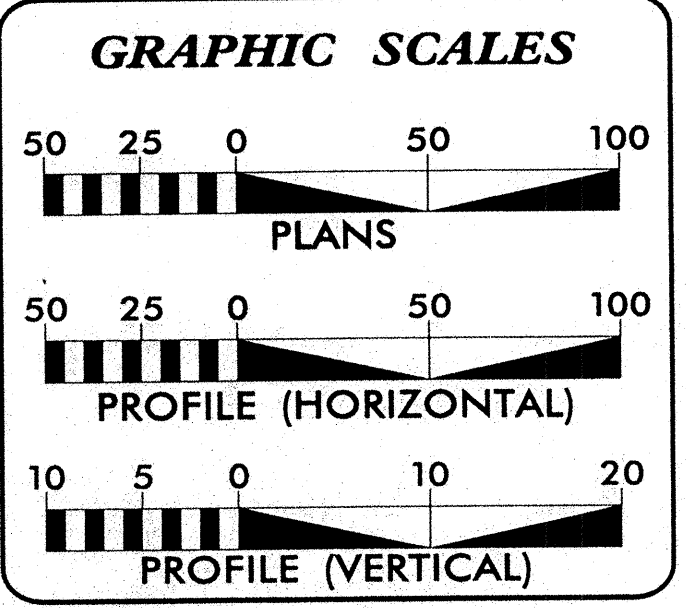
BEGIN TIP PROJECT B-4949
-L- POC Sta. 17+15.00

END TIP PROJECT B-4949
-L- POT Sta. 31+50.00
BEGIN TIP PROJECT B-4091



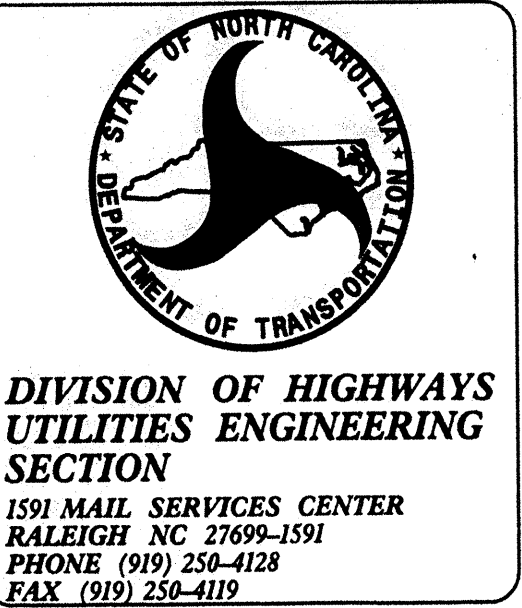
CLEARING ON THIS PROJECT SHOULD BE PERFORMED TO THE LIMITS ESTABLISHED BY METHOD III.

THIS PROJECT IS WITHIN THE MUNICIPAL BOUNDARIES OF FAYETTEVILLE.



| SHEET NO. | DESCRIPTION |
|----------------|-----------------------------------|
| UC-1 | TITLE SHEET |
| UC-2 & UC-3 | UTILITY CONSTRUCTION PLAN SHEETS |
| UC-4 | PROFILE SHEET |
| UC-5 | DETAIL SHEET |
| UC-6 THRU UC-8 | UTILITY BRIDGE ATTACHMENT DETAILS |

WATER AND SEWER OWNERS ON PROJECT
(1) FAYETTEVILLE PUBLIC WORKS COMMISSION WATER
(2) FAYETTEVILLE PUBLIC WORKS COMMISSION SANITARY SEWER

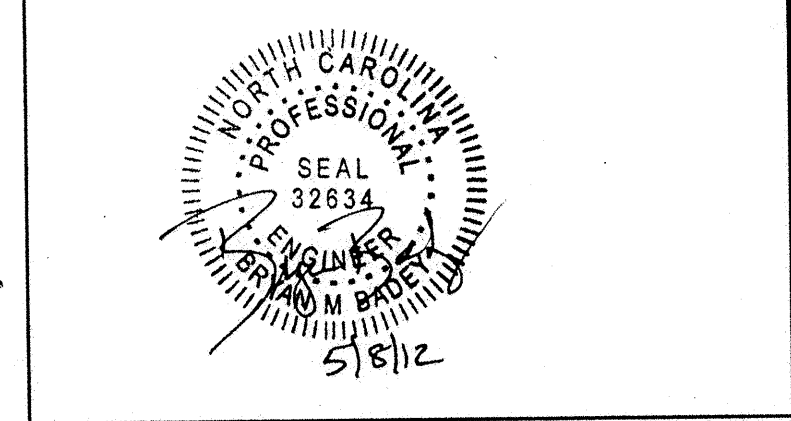


PLANS PREPARED BY:

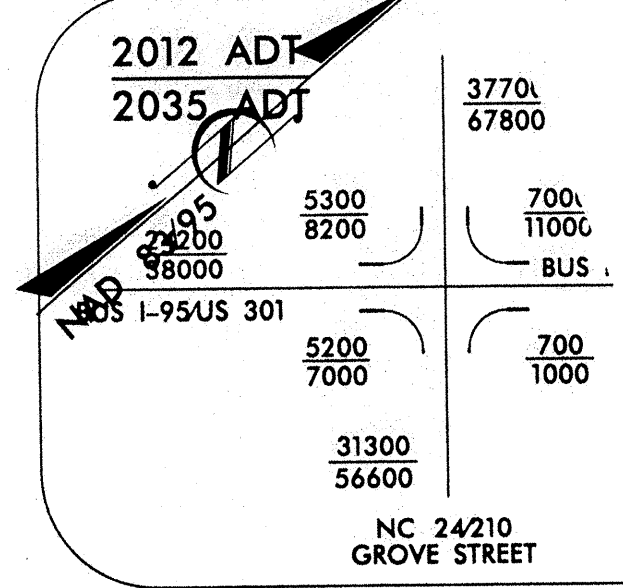
RK&K
RUMMEL, KLEPPER & KAHL, LLP
900 RIDGEFIELD DRIVE SUITE 350
RALEIGH, NORTH CAROLINA 27609-3960
NC LICENSE NO. F-0112 • (919) 878-9560

Professional Engineer Seal for William M. Bradley, No. 32634, State of North Carolina.

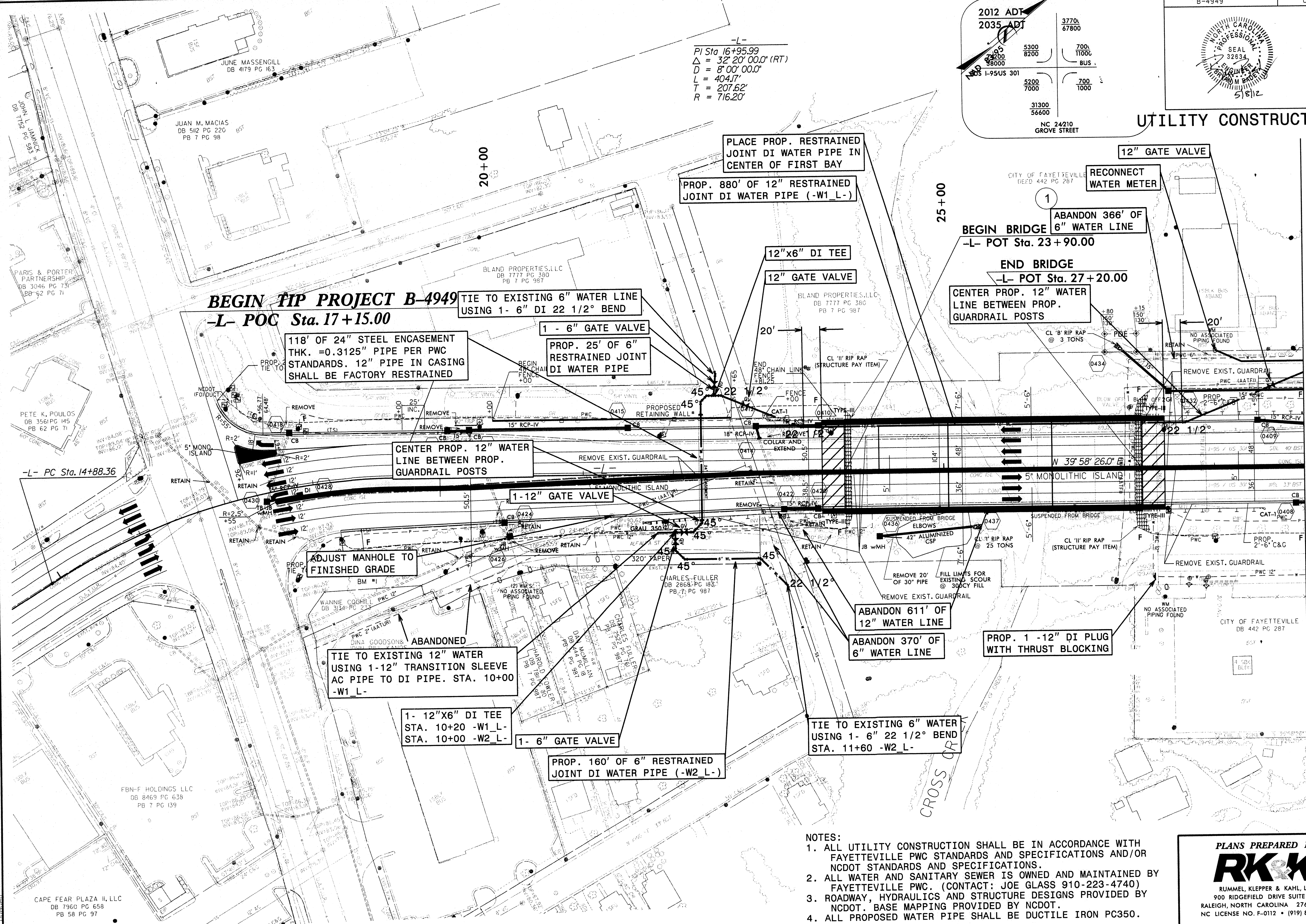
5/8/2012
P:\p\o\B-4949_UC_1.sh.dgn
b\ccoley



UTILITY CONSTRUCTION



-L-
 PI Sta 16+95.99
 $\Delta = 32' 20' 00.0''$ (RT)
 $D = 8' 00' 00.0''$
 $L = 404.17'$
 $T = 207.62'$
 $R = 716.20'$



BEGIN TIP PROJECT B-4949
 -L- POC Sta. 17+15.00

TIE TO EXISTING 6" WATER LINE
 USING 1- 6" DI 22 1/2° BEND

118' OF 24" STEEL ENCASEMENT
 THK. = 0.3125" PIPE PER PWC
 STANDARDS. 12" PIPE IN CASING
 SHALL BE FACTORY RESTRAINED

1 - 6" GATE VALVE

PROP. 25' OF 6"
 RESTRAINED JOINT
 DI WATER PIPE

PLACE PROP. RESTRAINED
 JOINT DI WATER PIPE IN
 CENTER OF FIRST BAY

PROP. 880' OF 12" RESTRAINED
 JOINT DI WATER PIPE (-W1_L-)

12"x6" DI TEE

12" GATE VALVE

RECONNECT
 WATER METER
 12" GATE VALVE

ABANDON 366' OF
 6" WATER LINE
 -L- POT Sta. 23+90.00

END BRIDGE
 -L- POT Sta. 27+20.00

CENTER PROP. 12" WATER
 LINE BETWEEN PROP.
 GUARDRAIL POSTS

CENTER PROP. 12" WATER
 LINE BETWEEN PROP.
 GUARDRAIL POSTS

1- 12" GATE VALVE

ADJUST MANHOLE TO
 FINISHED GRADE

ABANDONED
 TIE TO EXISTING 12" WATER
 USING 1-12" TRANSITION SLEEVE
 AC PIPE TO DI PIPE. STA. 10+00
 -W1_L-

1- 12"x6" DI TEE
 STA. 10+20 -W1_L-
 STA. 10+00 -W2_L-

1- 6" GATE VALVE

PROP. 160' OF 6" RESTRAINED
 JOINT DI WATER PIPE (-W2_L-)

ABANDON 611' OF
 12" WATER LINE

ABANDON 370' OF
 6" WATER LINE

PROP. 1- 12" DI PLUG
 WITH THRUST BLOCKING

TIE TO EXISTING 6" WATER
 USING 1- 6" 22 1/2° BEND
 STA. 11+60 -W2_L-

NOTES:

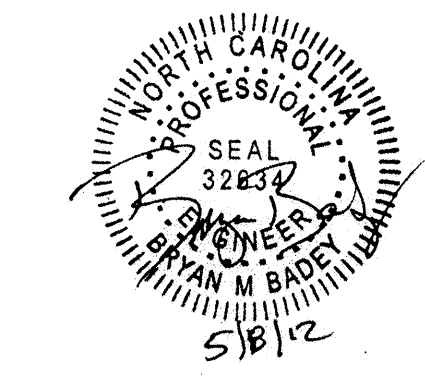
1. ALL UTILITY CONSTRUCTION SHALL BE IN ACCORDANCE WITH FAYETTEVILLE PWC STANDARDS AND SPECIFICATIONS AND/OR NCDOT STANDARDS AND SPECIFICATIONS.
2. ALL WATER AND SANITARY SEWER IS OWNED AND MAINTAINED BY FAYETTEVILLE PWC. (CONTACT: JOE GLASS 910-223-4740)
3. ROADWAY, HYDRAULICS AND STRUCTURE DESIGNS PROVIDED BY NCDOT. BASE MAPPING PROVIDED BY NCDOT.
4. ALL PROPOSED WATER PIPE SHALL BE DUCTILE IRON PC350.

PLANS PREPARED BY :

RUMMEL, KLEPPER & KAHL, LLP
 900 RIDGEFIELD DRIVE SUITE 350
 RALEIGH, NORTH CAROLINA 27609-3960
 NC LICENSE NO. F-0112 • (919) 878-9560

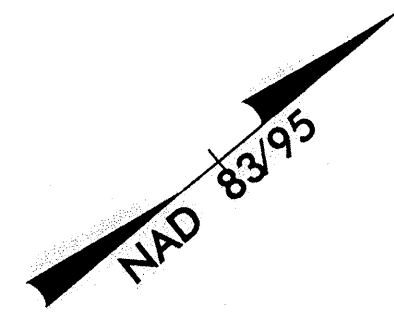
MATCH LINE SEE PLAN SHEET UC-3 -L- STA. 29+00

5/14/99 5/8/2002 R:\p\proj\B-4949_UC-2_psh.dgn

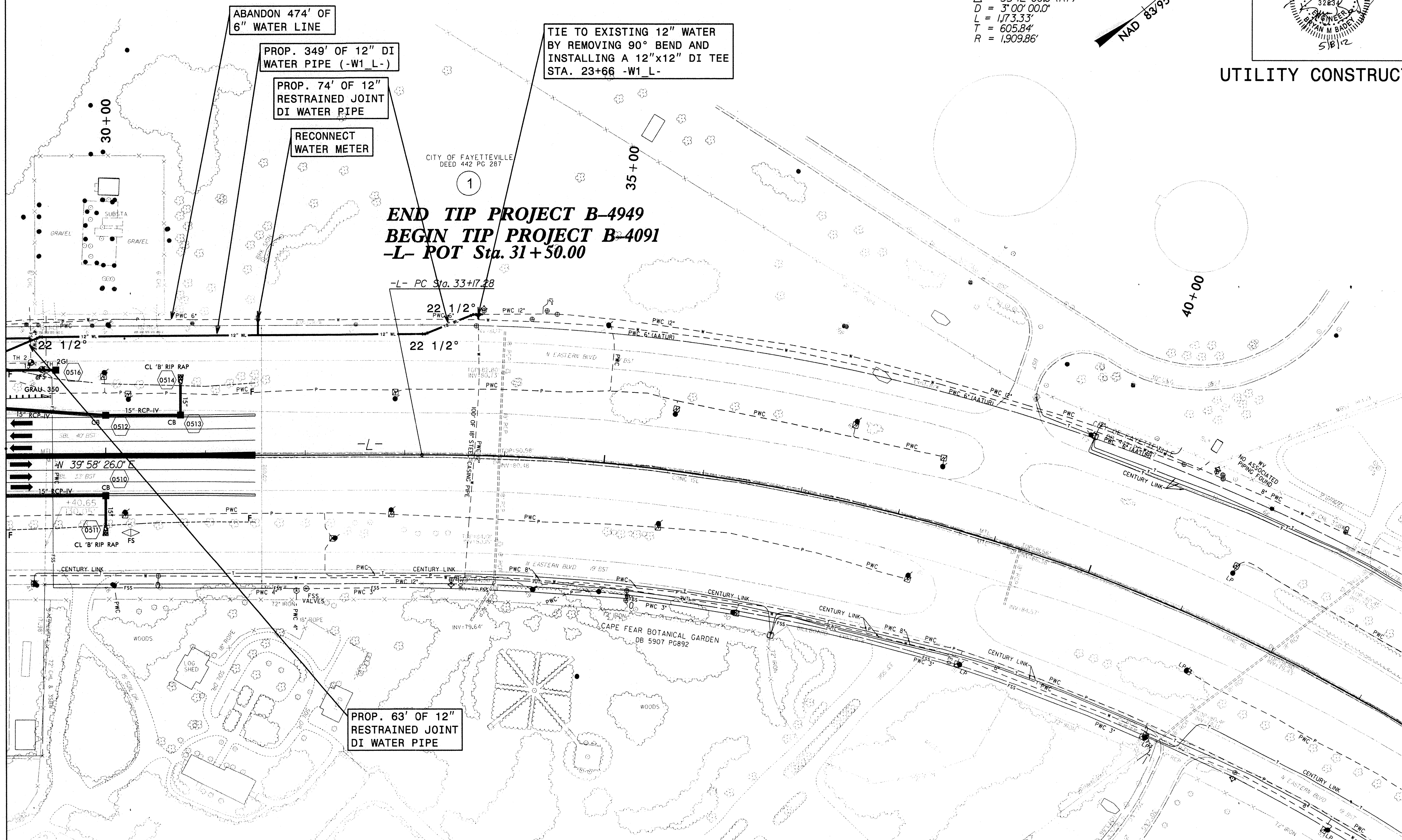


UTILITY CONSTRUCTION

-L-
 PI Sta 39+23.12
 $\Delta = 35^\circ 12' 00.0''$ (RT)
 $D = 3' 00' 00.0''$
 $L = 1,73.33'$
 $T = 605.84'$
 $R = 1,909.86'$



MATCH LINE SEE PLAN SHEET UC-2 -L- STA. 29+00



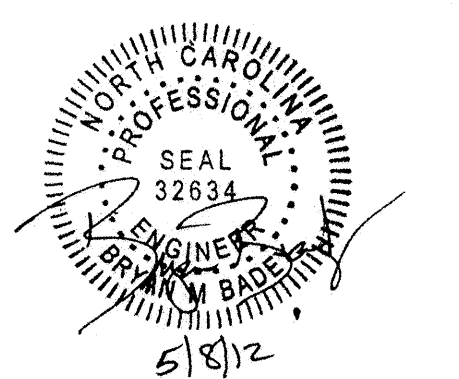
- NOTES:
1. ALL UTILITY CONSTRUCTION SHALL BE IN ACCORDANCE WITH FAYETTEVILLE PWC STANDARDS AND SPECIFICATIONS AND/OR NCDOT STANDARDS AND SPECIFICATIONS.
 2. ALL WATER AND SANITARY SEWER IS OWNED AND MAINTAINED BY FAYETTEVILLE PWC. (CONTACT: JOE GLASS 910-223-4740)
 3. ROADWAY, HYDRAULICS AND STRUCTURE DESIGNS PROVIDED BY NCDOT. BASE MAPPING PROVIDED BY NCDOT.
 4. ALL PROPOSED WATER PIPE SHALL BE DUCTILE IRON PC350.

PLANS PREPARED BY :

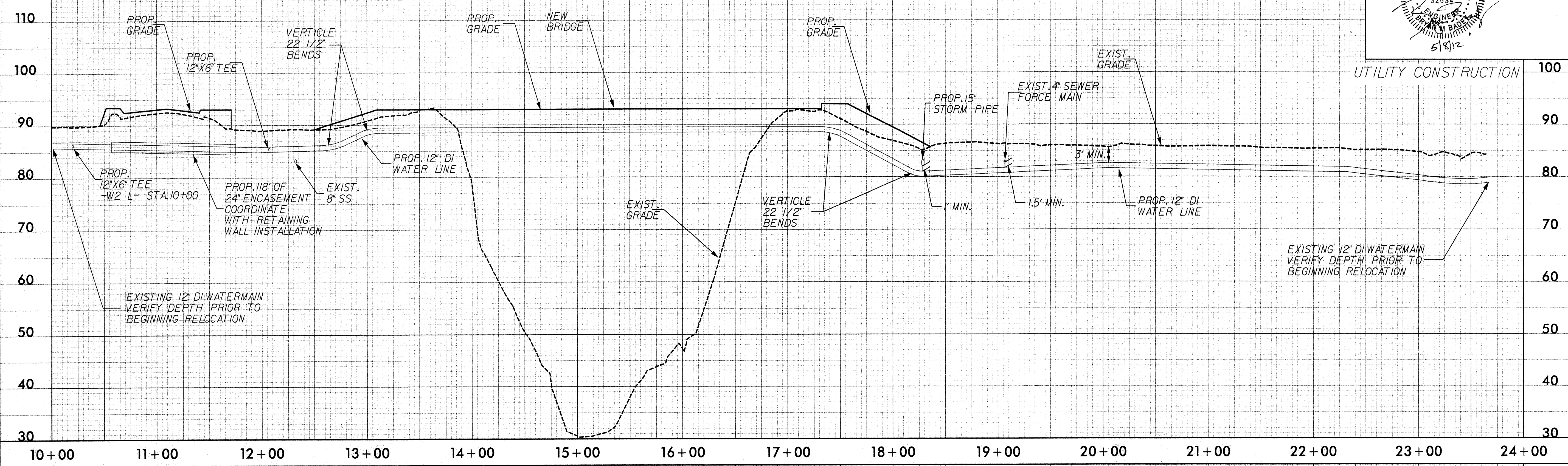
RUMMEL, KLEPPER & KAHL, LLP
 900 RIDGEFIELD DRIVE SUITE 350
 RALEIGH, NORTH CAROLINA 27609-3960
 NC LICENSE NO. F-0112 • (919) 878-9560

8/17/09

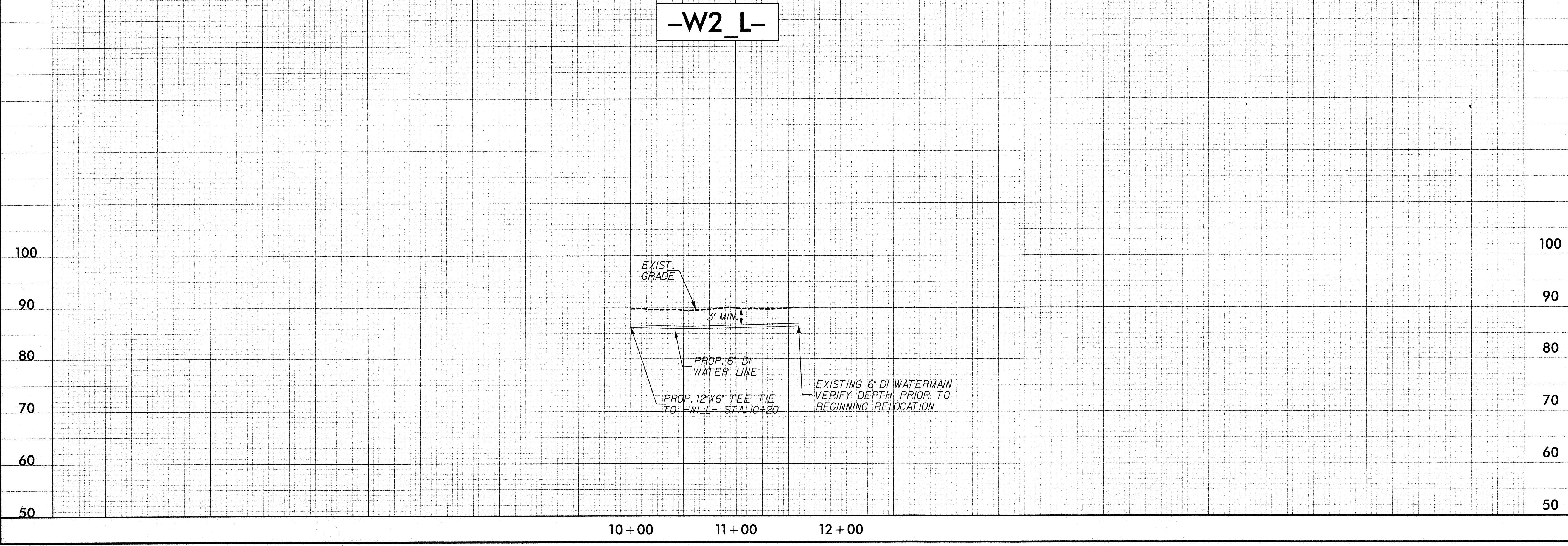
5/8/2018
 R:\Projects\B-4949_UC-3_psh.dgn



-W1_L-

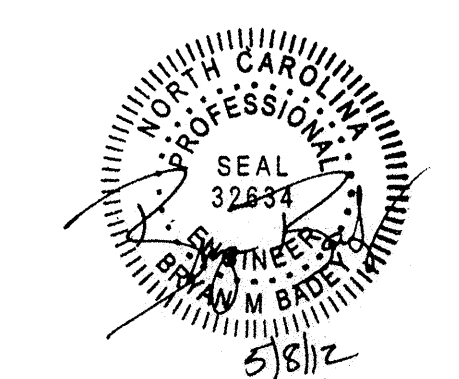


-W2_L-



5/28/99

5/8/2012
RAYPROJ\B-4949-UC-4_psh.dgn



UTILITY CONSTRUCTION

WATER

1. CONTRACTOR SHALL REPAIR ALL WATER LATERALS, AND MAINS DAMAGED DURING CONSTRUCTION (NO SEPARATE PAYMENT). THE CONTRACTOR SHALL REPORT IMMEDIATELY ALL WATER MAIN AND LATERAL BREAKS TO PWC DISPATCHER AND TO THE OWNER'S REPRESENTATIVE AND SHALL INITIATE IMMEDIATE REPAIRS TO PWC STANDARDS. CONTRACTOR SHALL NOT OPERATE PWC WATER MAIN VALVES WITHOUT PWC APPROVAL AND SHALL COORDINATE ALL VALVE CLOSINGS WITH THE PWC. THE CONTRACTOR SHALL FAMILIARIZE HIMSELF WITH WATER SYSTEM IN THE AREA SO AS TO LESSEN THE CHANCE OF SERVICE INTERRUPTION.

2. THE CONTRACTOR SHALL NOT USE HOUSE HOSE BIBBS OR ANY OTHER METHOD OF BLOW OFF WHICH ALLOWS DOMESTIC WATER CONTAINING SEDIMENTS OR HIGH LEVELS OF CHLORINE TO PASS THRU RESIDENT'S METERS. THE CONTRACTOR SHALL BE RESPONSIBLE FOR ALL DAMAGES RESULTING FROM ALLOWING "DIRTY" WATER TO ENTER RESIDENT'S PLUMBING SYSTEM, SUCH AS WATER HEATERS, STAINED CLOTHING, CLOGGED SCREENS, ETC.

3. WHERE PLANS INDICATE EXISTING WATER VALVE TOPRIM AND INVERT, THE INVERT IS THE ELEVATION OF THE TOP OF THE VALVE OPERATING NUT.

4. DUE TO THE QUESTIONABLE INTEGRITY OF THE EXISTING WATER SYSTEM AS RELATING TO NEW CONSTRUCTION, CONTRACTOR SHALL INSTALL NEW WATER AND TRANSFER ALL SERVICES PRIOR TO BEGINNING SANITARY SEWER CONSTRUCTION. THIS MAY BE ACCOMPLISHED STREET BY STREET TO ALLOW SIMULTANEOUS WATER AND SEWER CONSTRUCTION. WATER SHALL BE INSTALLED UTILIZING A PWC APPROVED CUT-SHEET INDICATING WATER MAIN INSTALLATION DEPTH BELOW ENGINEER SUPPLIED REFERENCE POINTS.

5. TRANSFER OF WATER SERVICES SHALL BE ACCOMPLISHED AS FOLLOWS:

A. INSTALL, TEST AND STERILIZE NEW MAIN AND LATERALS LATERALS SHALL BE INSTALLED ADJACENT TO EXISTING SERVICE 18" INSIDE RW, (EXISTING SERVICE IS ACTIVE).

B. TRANSFER EXISTING METER TO NEW METER BOX AND THE NEW WATER LATERAL TO EXISTING DOMESTIC SERVICE. BLOW-OFF SERVICE AT HOSE BIBB ON HOUSE ONLY IF EXISTING METER HAS NO LOCK VALVE OR IS INOPERABLE WHEN MAIN IS NOT TO BE ABANDONED. CONTRACTOR SHALL UNCOVER OLD CORPORATION AT MAIN AND CLOSE CORPORATION TO ABANDON OLD SERVICE (NO SEPARATE PAYMENT).

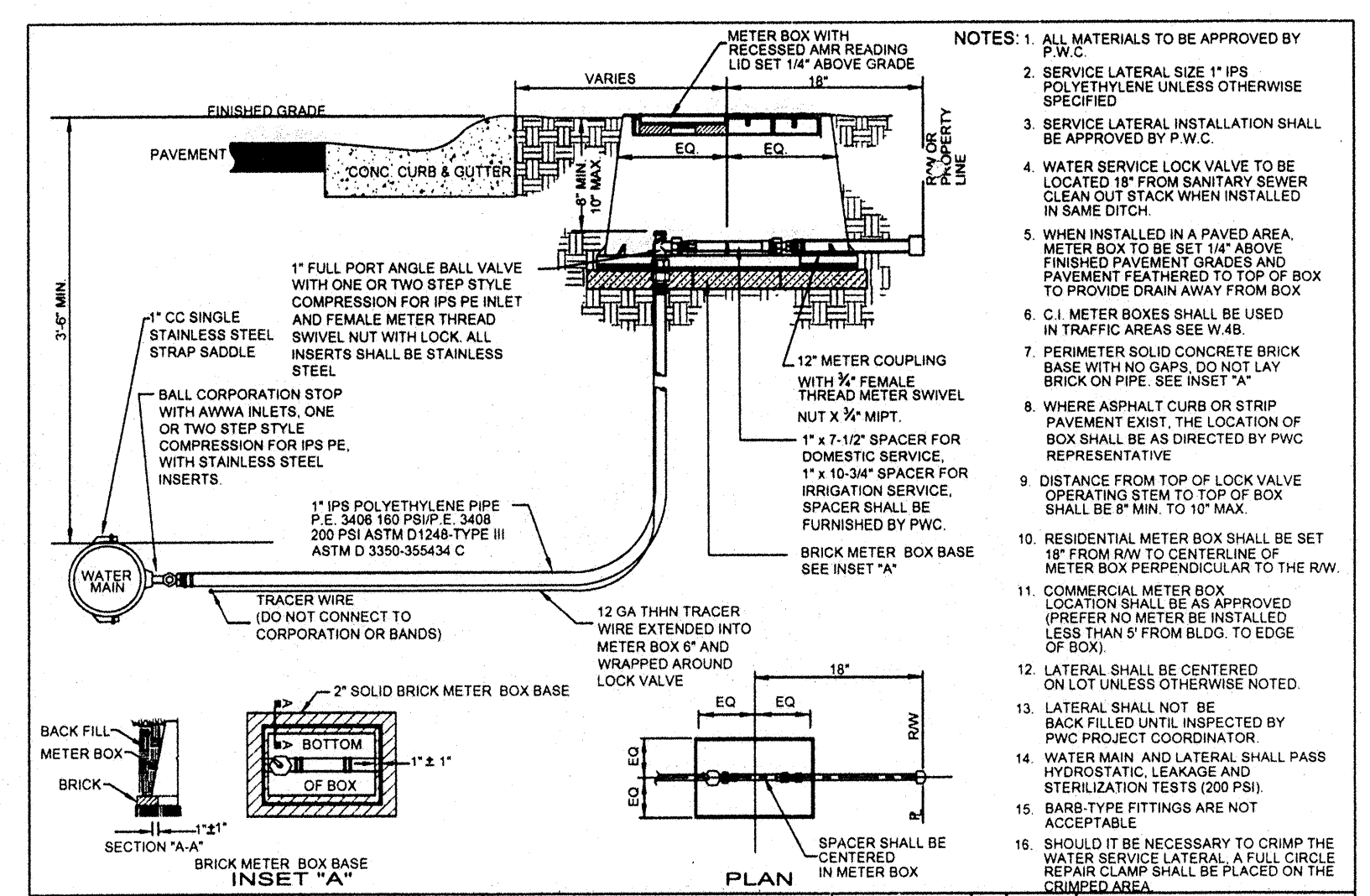
C. AFTER ALL SERVICES ARE TRANSFERRED TO THE NEW SYSTEM IN A STREET OR VALVE TO VALVE, CUT OFF VALVE ON EXISTING SYSTEM AND ABANDON EXISTING MAINS AS INDICATED IN THE DETAILS.

D. CONTRACTOR SHALL SUPPLY NEW METER BOXES AND DISPOSE OF UNSUITABLE EXISTING METER BOXES. SALVAGEABLE METER BOXES SHALL BE DELIVERED TO PWC WAREHOUSE ON BELT BOULEVARD FAYETTEVILLE N.C.

E. CONTRACTOR SHALL CHANGE OVER OLD METER TO NEW SERVICES OR INSTALL NEW METER FURNISHED BY PWC. SAME METER NUMBER SHALL BE INSTALLED ON SAME ADDRESS AND/OR CUSTOMER.

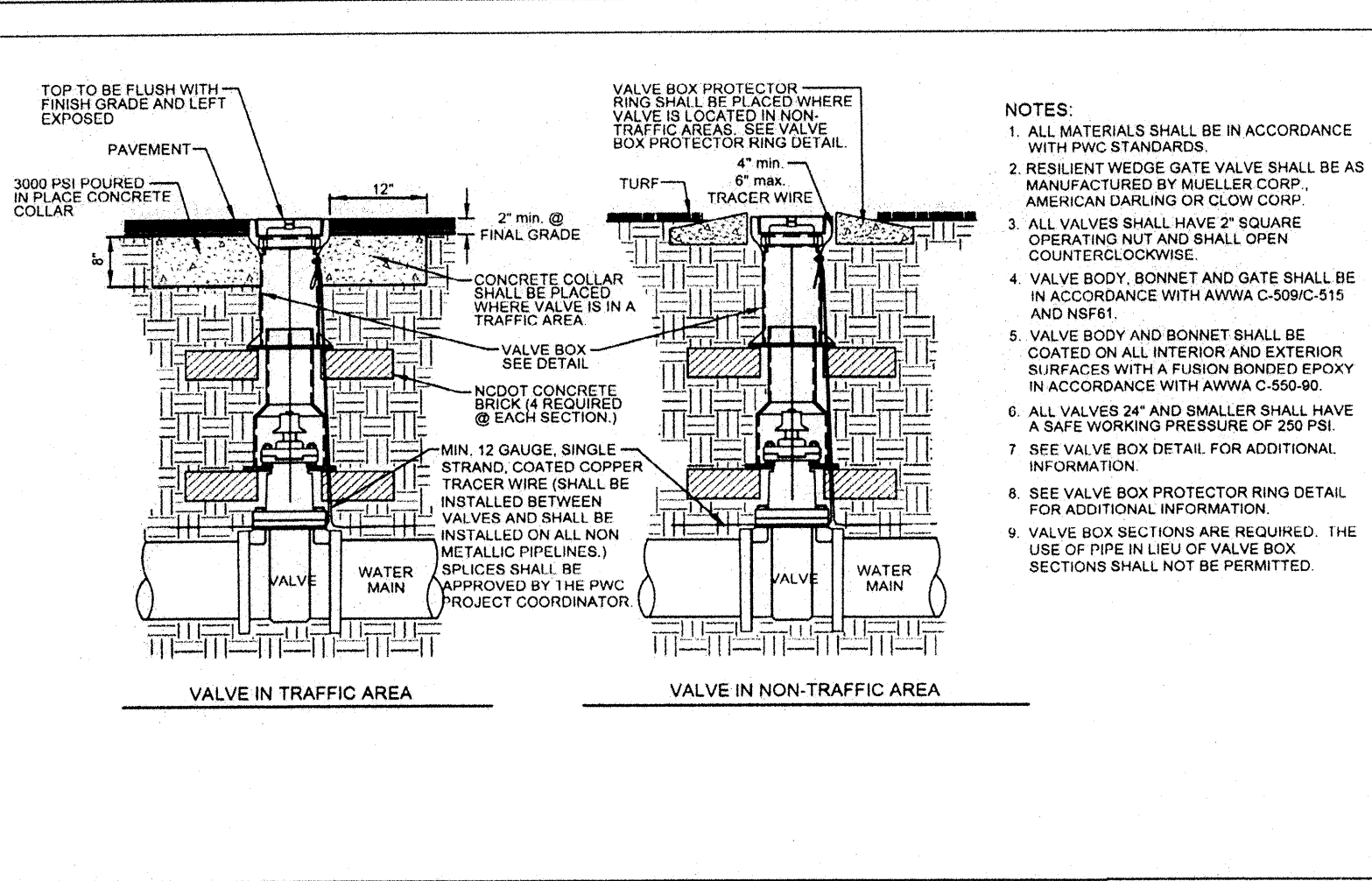
| WATER UTILITY NOTES | | PUBLIC WORKS COMMISSION FAYETTEVILLE, N.C. | | NO. | DATE | REVISION |
|---------------------|--------------|---|--------|-----|--------|-----------------|
| DWG. NO. | W.1 | DWG. BY: | PWC | 1 | JAN 05 | REVISED NOTE 5A |
| DATE: | JAN 01, 2012 | APPROVED BY: | J.E.G. | | | |
| SHEET NO. 1 OF 1 | | WATER RESOURCES ENGINEERING DEPARTMENT | | | | |

2012-W1 WATER UTILITY NOTES.dwg



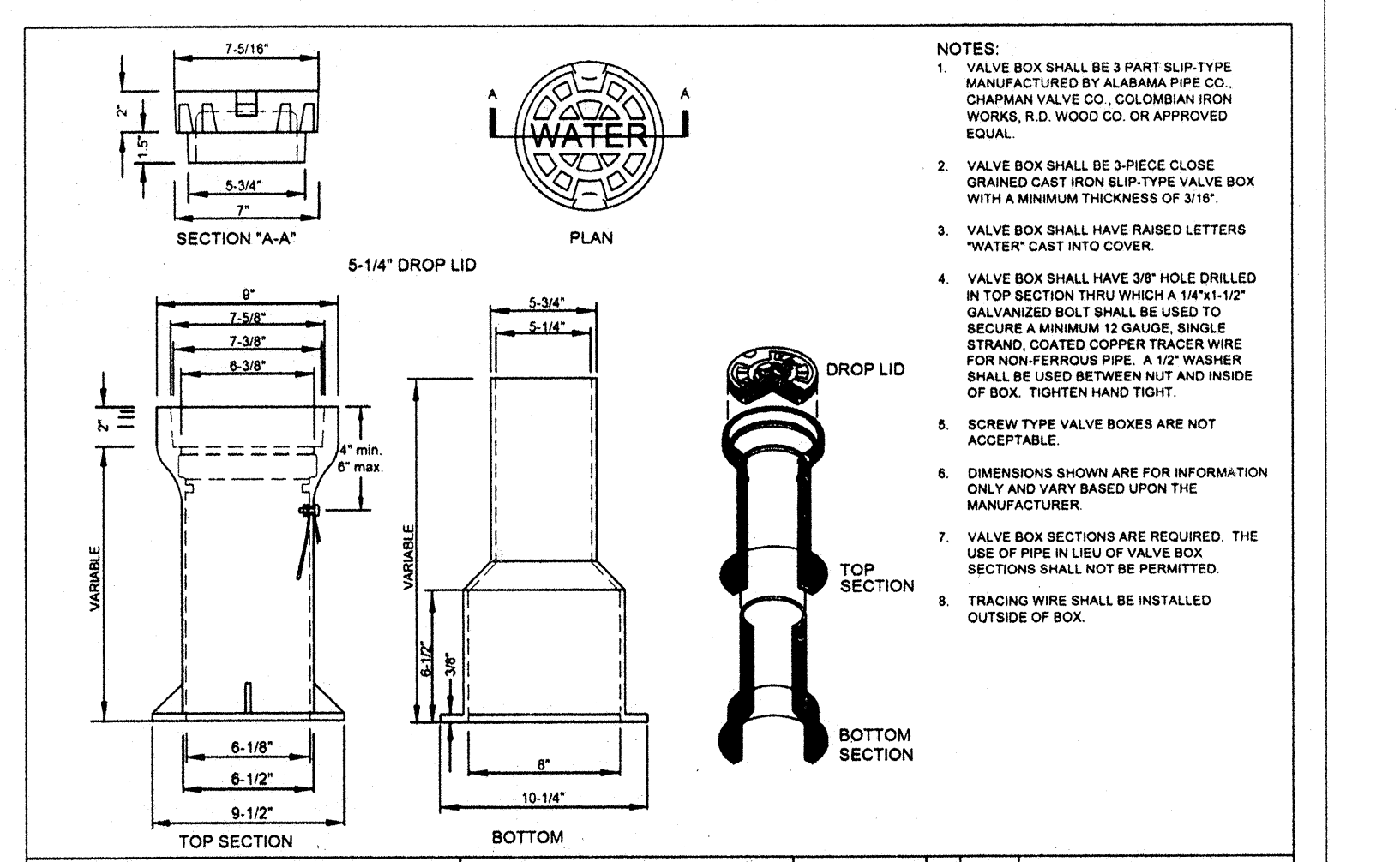
| PROPOSED 1" WATER SERVICE LATERAL | | PUBLIC WORKS COMMISSION FAYETTEVILLE, N.C. | | NO. | DATE | REVISION |
|-----------------------------------|--------------|---|--------|-----|---------|---------------------------|
| DWG. NO. | W.2 | DWG. BY: | PWC | 1 | MAY 05 | VALVE CHANGE |
| DATE: | JAN 01, 2012 | APPROVED BY: | J.E.G. | 2 | SEPT 05 | VALVE CHANGE, ADD NOTE 16 |
| 3 | JULY 08 | RESIZED METER COUPLING | | | | |
| SHEET NO. 1 OF 1 | | WATER RESOURCES ENGINEERING DEPARTMENT | | | | |

2012-W2 WLAT.dwg



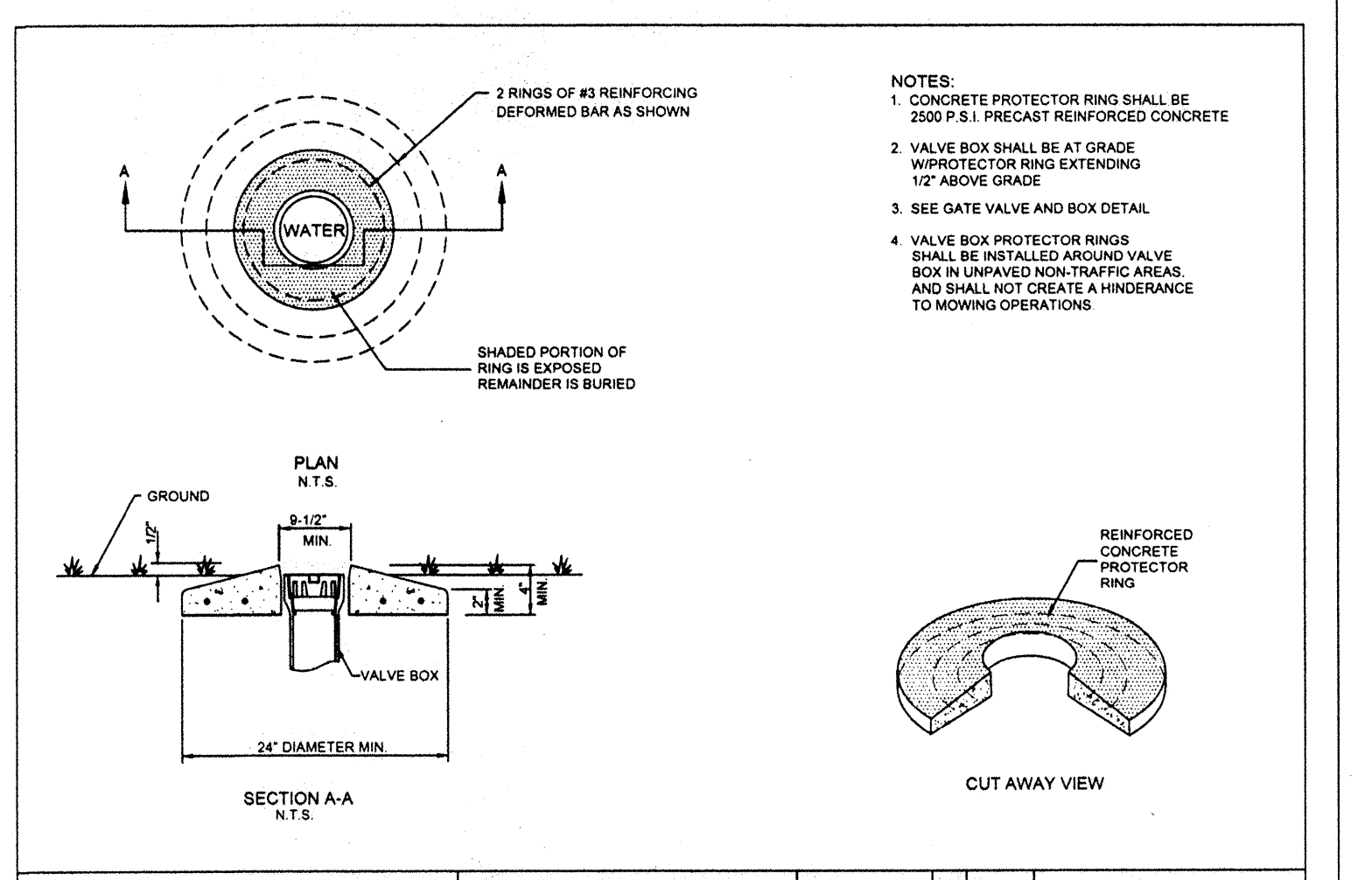
| GATE VALVE (N.T.S.) | | PUBLIC WORKS COMMISSION FAYETTEVILLE, N.C. | | NO. | DATE | REVISION |
|---------------------|--------------|---|--------|-----|------|-----------------|
| DWG. NO. | W.6 | DWG. BY: | PWC | 1 | 6/08 | ADDED NOTE #9 |
| DATE: | JAN 01, 2012 | APPROVED BY: | J.E.G. | 2 | 7/09 | CLARIFIED NOTES |
| SHEET NO. 1 OF 1 | | WATER RESOURCES ENGINEERING DEPARTMENT | | | | |

2012-W6 GATEVALVE.dwg



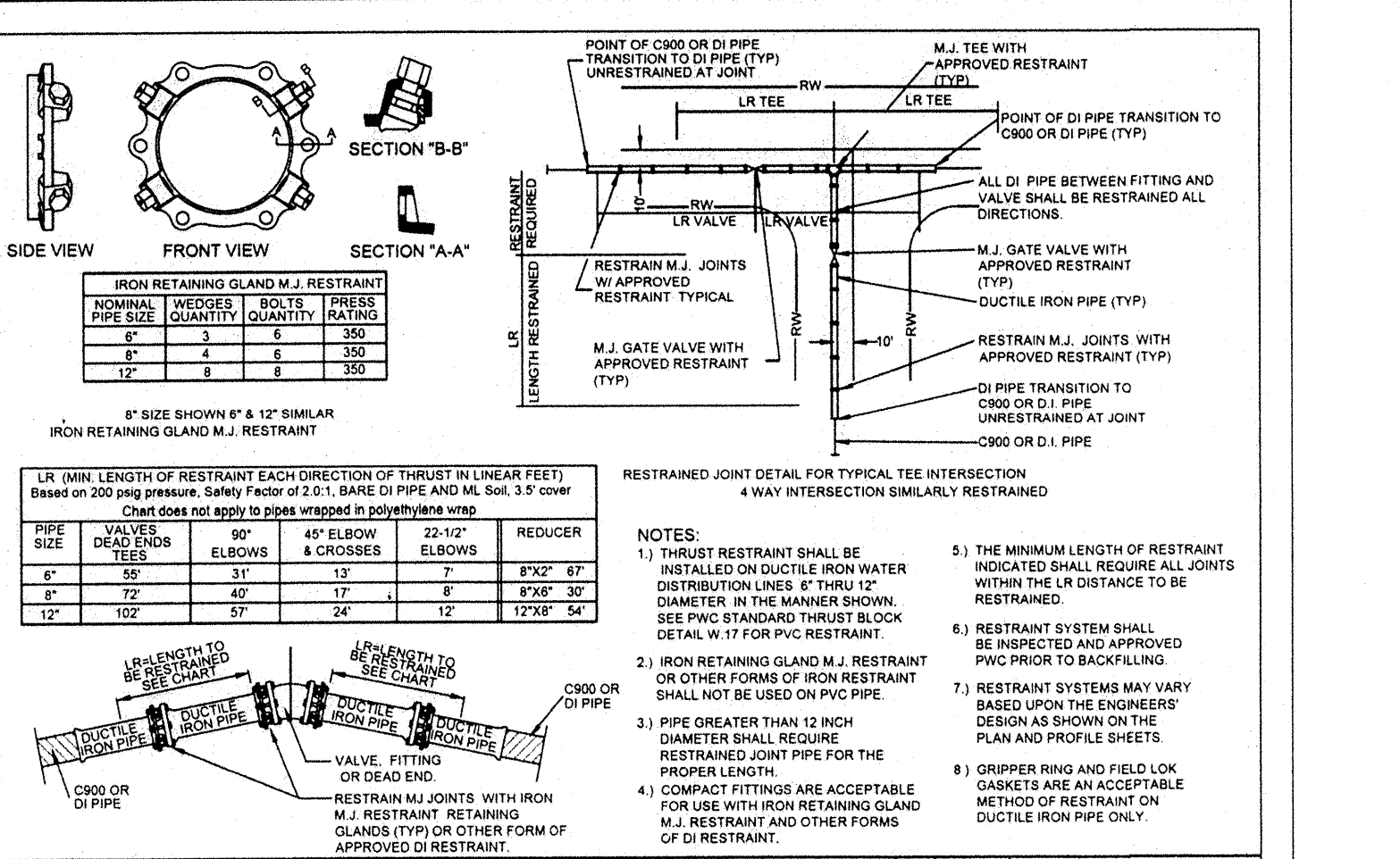
| VALVE BOX (N.T.S.) | | PUBLIC WORKS COMMISSION FAYETTEVILLE, N.C. | | NO. | DATE | REVISION |
|--------------------|--------------|---|--------|-----|------|------------------------------------|
| DWG. NO. | W.7 | DWG. BY: | PWC | 1 | 7/09 | ADDED NOTES 7, 8 & CLARIFIED NOTES |
| DATE: | JAN 01, 2012 | APPROVED BY: | J.E.G. | | | |
| SHEET NO. 1 OF 1 | | WATER RESOURCES ENGINEERING DEPARTMENT | | | | |

2012-W7 VALVEBOX.dwg



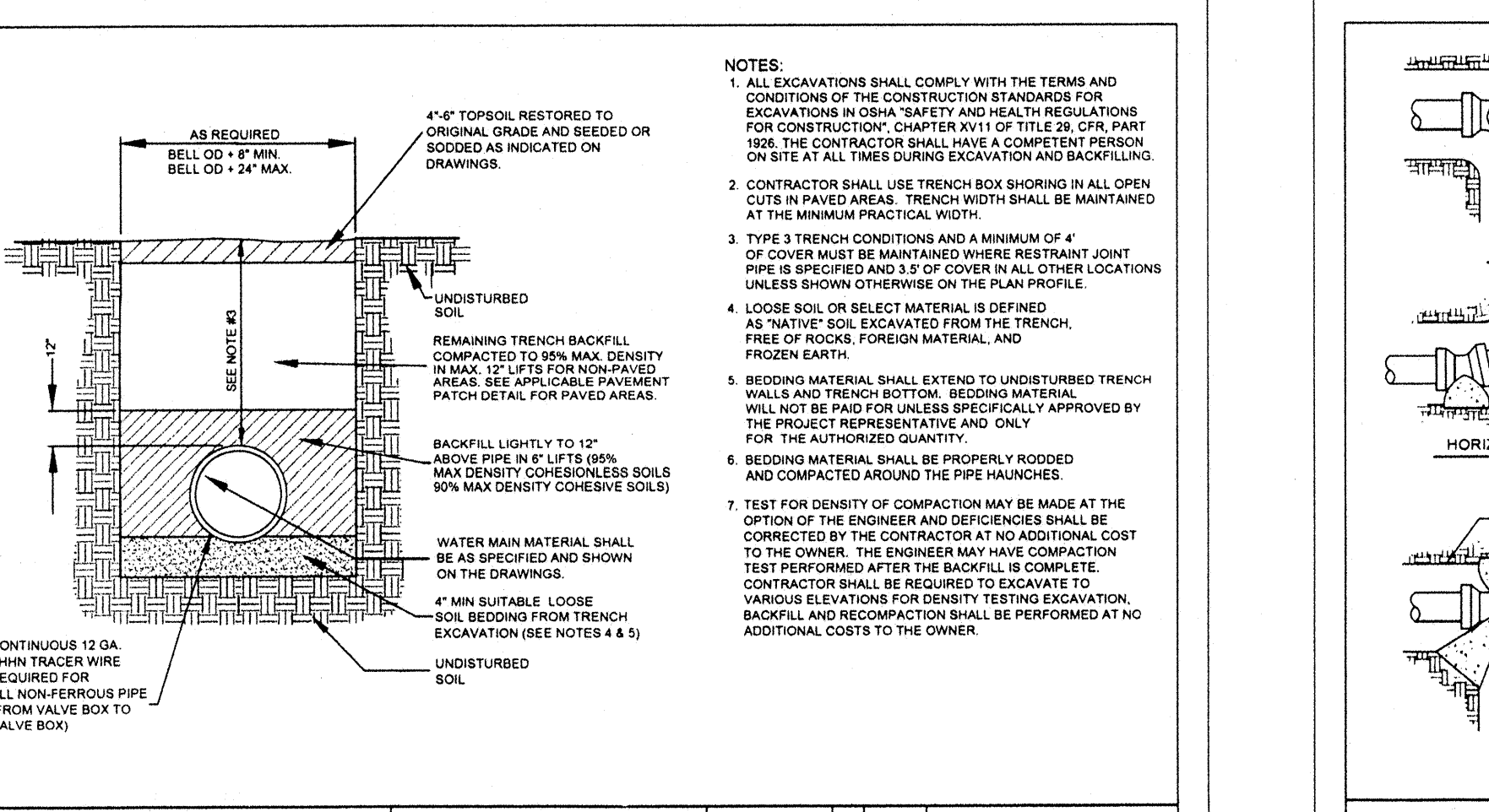
| VALVE BOX PROTECTOR RING (N.T.S.) | | PUBLIC WORKS COMMISSION FAYETTEVILLE, N.C. | | NO. | DATE | REVISION |
|-----------------------------------|--------------|---|--------|-----|------|----------|
| DWG. NO. | W.8 | DWG. BY: | PWC | | | |
| DATE: | JAN 01, 2012 | APPROVED BY: | J.E.G. | | | |
| SHEET NO. 1 OF 1 | | WATER RESOURCES ENGINEERING DEPARTMENT | | | | |

2012-W8 VCB PROTECTOR RING.dwg



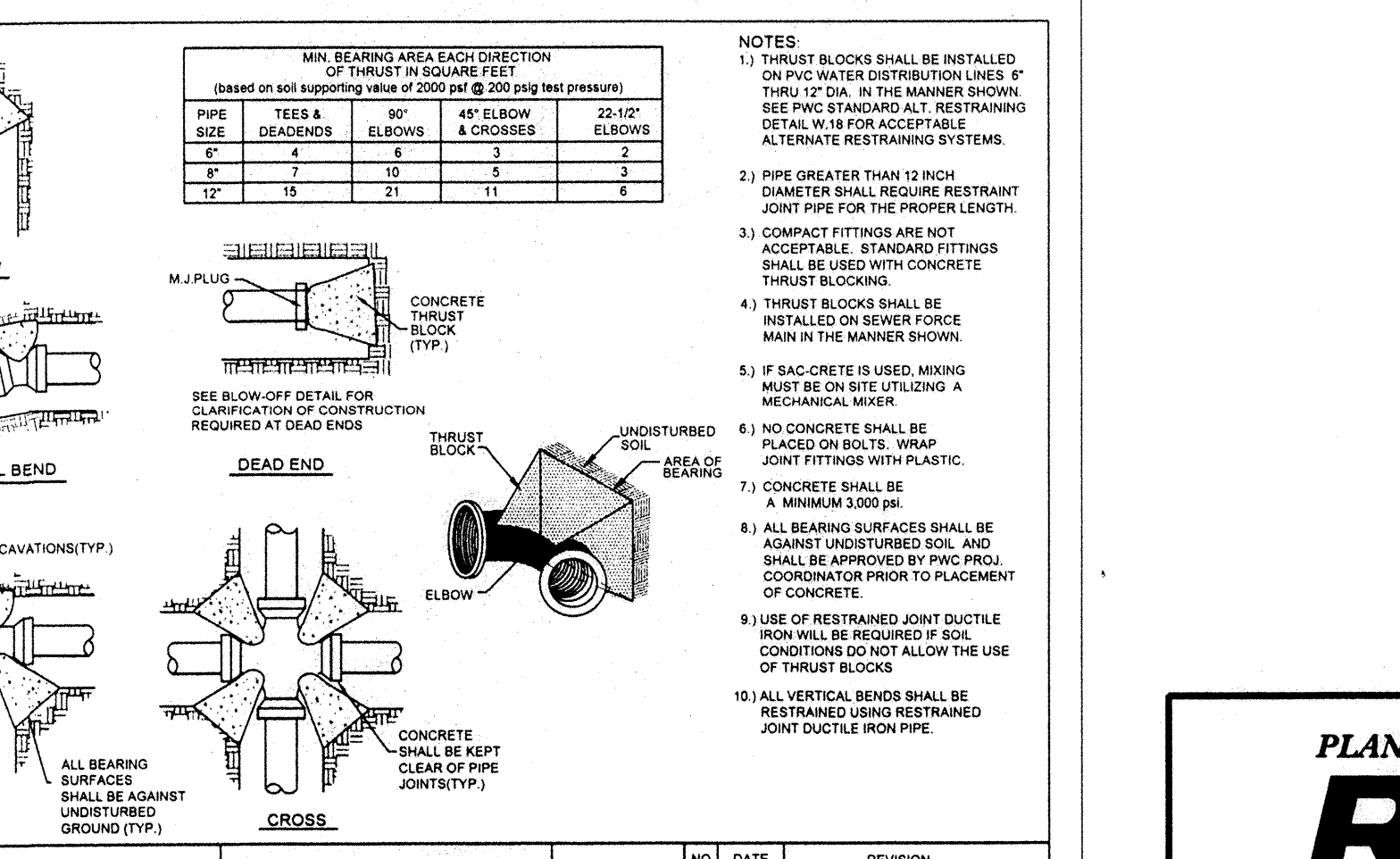
| ALTERNATE RESTRAINT DETAIL (DUCTILE IRON PIPE ONLY) | | PUBLIC WORKS COMMISSION FAYETTEVILLE, N.C. | | NO. | DATE | REVISION |
|---|--------------|---|--------|-----|------------|-----------------------------|
| DWG. NO. | W.18 | DWG. BY: | PWC | 1 | 11/16/2007 | REVISED TABLE, ADDED NOTE 8 |
| DATE: | JAN 01, 2012 | APPROVED BY: | J.E.G. | | | |
| SHEET NO. 1 OF 1 | | WATER RESOURCES ENGINEERING DEPARTMENT | | | | |

2012-W18 RESTRAINT DETAIL.dwg



| TYPE 3 TRENCH WATER MAIN BEDDING DETAIL | | PUBLIC WORKS COMMISSION FAYETTEVILLE, N.C. | | NO. | DATE | REVISION |
|---|--------------|---|--------|-----|------|----------|
| DWG. NO. | W.19 | DWG. BY: | PWC | | | |
| DATE: | JAN 01, 2012 | APPROVED BY: | J.E.G. | | | |
| SHEET NO. 1 OF 1 | | WATER RESOURCES ENGINEERING DEPARTMENT | | | | |

2012-W19 WATER BEDDING.dwg



| CONCRETE THRUST BLOCK DETAIL (N.T.S.) | | PUBLIC WORKS COMMISSION FAYETTEVILLE, N.C. | | NO. | DATE | REVISION |
|---------------------------------------|--------------|---|--------|-----|---------|-----------------------|
| DWG. NO. | W.17 | DWG. BY: | PWC | 1 | JAN 05 | REVISED TABLE, NOTE 1 |
| DATE: | JAN 01, 2012 | APPROVED BY: | J.E.G. | 2 | SEPT 05 | REVISED TABLE |
| 3 | FEB 07 | ADDED NOTES #4,10 | | | | |
| SHEET NO. 1 OF 1 | | WATER RESOURCES ENGINEERING DEPARTMENT | | | | |

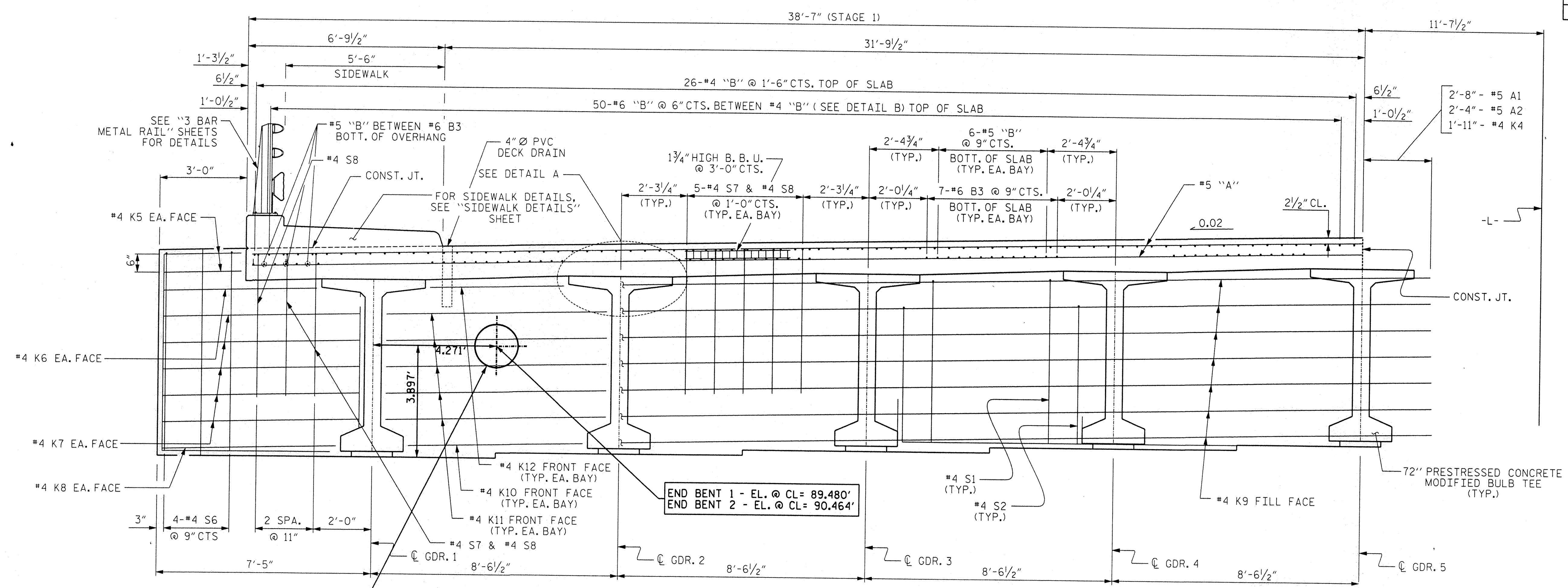
2012-W17 THRUSTBLOCK.dwg

PLANS PREPARED BY:

RUMMEL, KLEPPER & KAHL, LLP
 900 RIDGEFIELD DRIVE SUITE 350
 RALEIGH, NORTH CAROLINA 27609-3960
 NC LICENSE NO. F-0112 • (919) 878-9560

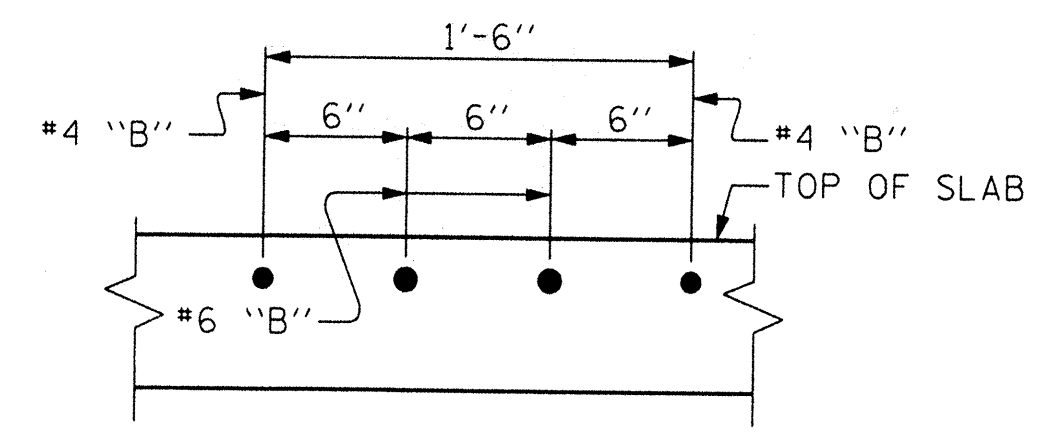
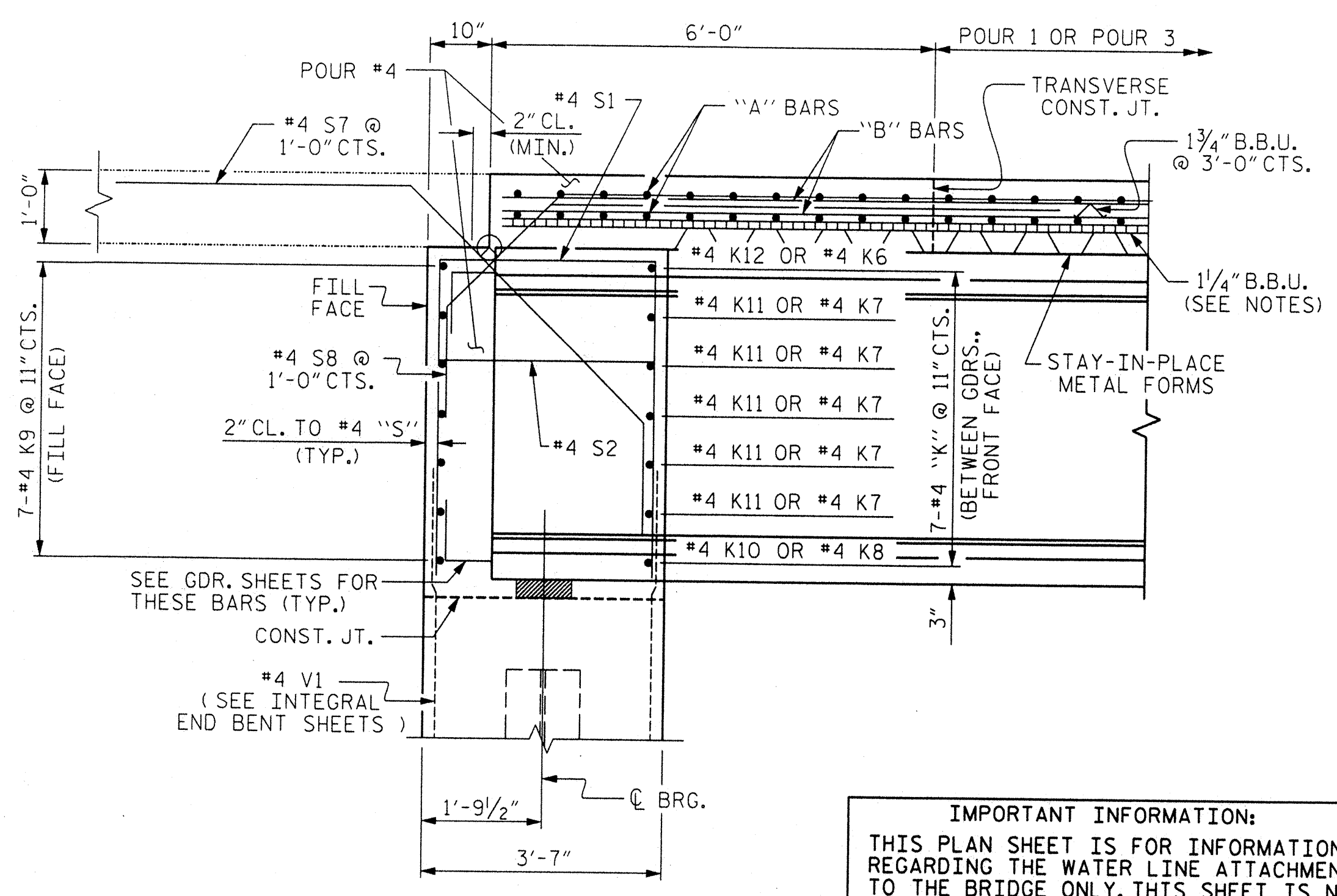
8/17/09
5/8/2012
R:\P\J\B-4949_UC-5.dwg
R:\P\J\B-4949_UC-5.dwg

UTILITY CONSTRUCTION



18" DIA. PIPE SLEEVE IS TO BE FLUSH WITH BOTH FACES OF THE BACKWALL, THE SLEEVE SHALL BE PLACED SO THAT THE OPENING IS PARALLEL TO GIRDERS

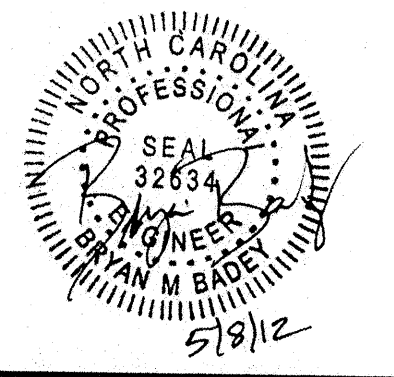
TYPICAL SECTION @ INTEGRAL END BENT



**SECTION A-A
(AT INTEGRAL END BENT)**

IMPORTANT INFORMATION:
THIS PLAN SHEET IS FOR INFORMATION REGARDING THE WATER LINE ATTACHMENT TO THE BRIDGE ONLY. THIS SHEET IS NOT FOR USE IN CONSTRUCTION OF THE BRIDGE BRIDGE DESIGN BY OTHERS

PLANS PREPARED BY:
RK&K
RUMMEL, KLEPPER & KAHL, LLP
900 RIDGEFIELD DRIVE SUITE 350
RALEIGH, NORTH CAROLINA 27609-3960
NC LICENSE NO. F-0112 • (919) 878-9560



PROJECT NO. B-4949
CUMBERLAND COUNTY
STATION: 25+55.00 -L-
SHEET 2 OF 4

| | | | | | |
|--|-----|-------|-----|-----|---------------------------|
| STATE OF NORTH CAROLINA DEPARTMENT OF TRANSPORTATION RALEIGH | | | | | |
| SUPERSTRUCTURE TYPICAL SECTION (STAGE 1) | | | | | |
| REVISIONS | | | | | |
| NO. | BY: | DATE: | NO. | BY: | DATE: |
| 1 | | | 3 | | |
| 2 | | | 4 | | |
| | | | | | SHEET NO. TOTAL SHEETS |

DRAWN BY: J.L. WALTON DATE: 5/15/11
CHECKED BY: B.N. GRADY DATE: 8/3/11

5/8/2012
*****DGN*****
bbodey

UTILITY CONSTRUCTION

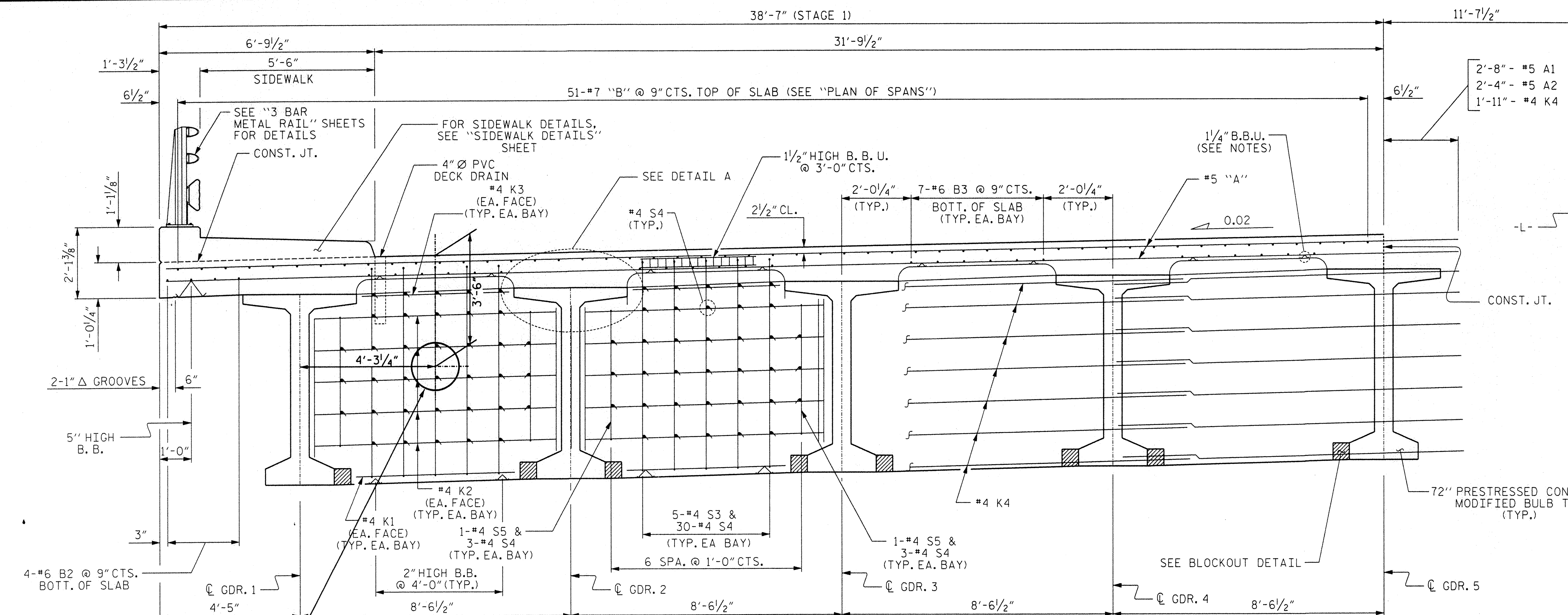
NOTES

PROVIDE 1/4" HIGH BEAM BOLSTERS UPPER AT 4'-0" CTS. ATOP THE METAL STAY-IN-PLACE FORMS TO SUPPORT THE BOTTOM MAT OF 'A' BARS. WHEN USING REMOVABLE FORMS, PROVIDE CONTINUOUS HIGH CHAIRS FOR METAL DECK (C.H.C.M.) @ 4'-0" CTS. WITH A HEIGHT TO SUPPORT THE BOTTOM MAT OF 'A' BARS A CLEAR DISTANCE OF 2 1/2" ABOVE THE TOP OF THE REMOVABLE FORM.

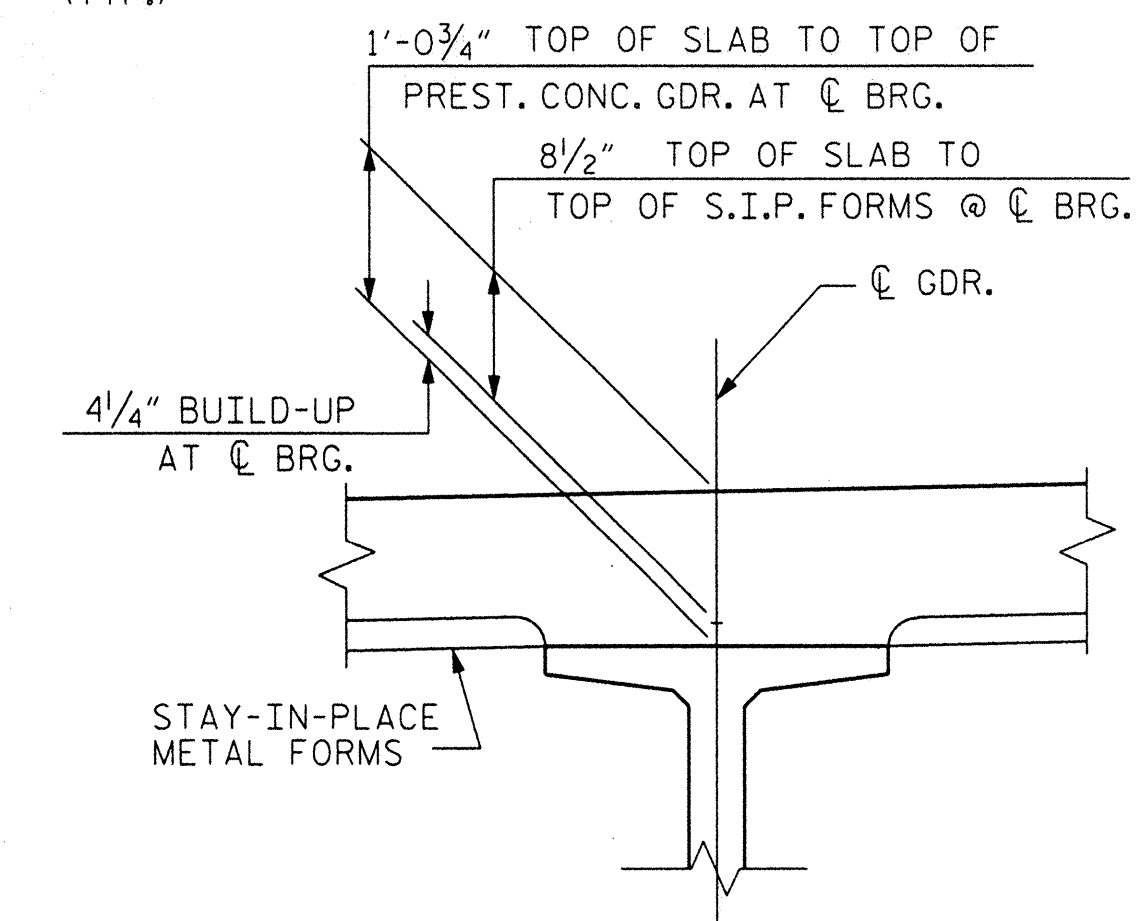
LONGITUDINAL STEEL MAY BE SHIFTED SLIGHTLY, AS NECESSARY, TO AVOID INTERFERENCE WITH STIRRUPS IN PRESTRESSED CONCRETE GIRDERS.

PREVIOUSLY CAST CONCRETE IN A CONTINUOUS UNIT SHALL HAVE ATTAINED A MINIMUM COMPRESSIVE STRENGTH OF 3,000 PSI BEFORE ADDITIONAL CONCRETE IS CAST IN THE UNIT.

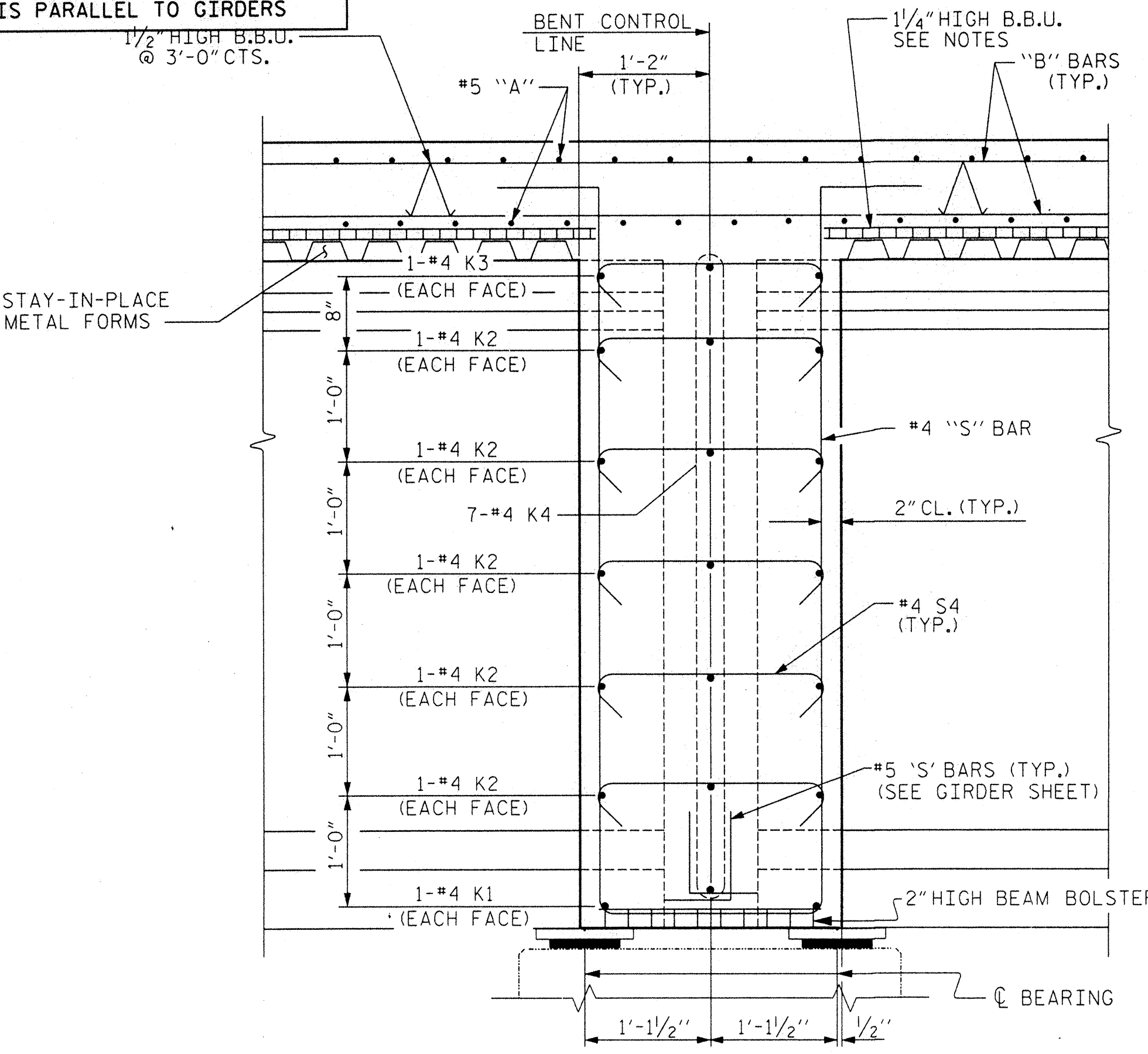
FOR TYPICAL SECTION OF INTERMEDIATE DIAPHRAGMS, SEE "PRESTRESSED CONCRETE GIRDER" SHEET 5 OF 5.



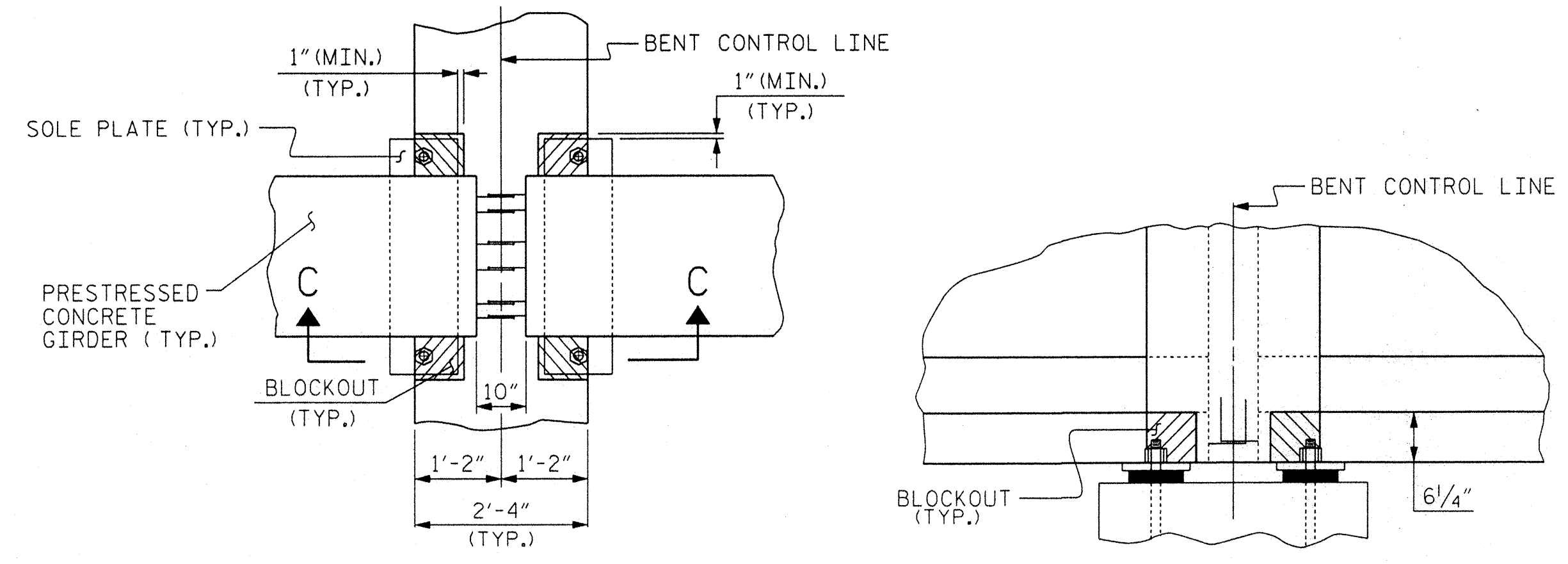
TYPICAL SECTION @ BENT DIAPHRAGM



DETAIL A



SECTION B-B



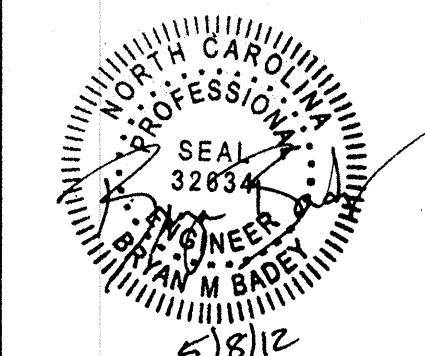
PLAN VIEW SECTION C-C

BENT DIAPHRAGM BLOCKOUT DETAIL

(PRESTRESSED GIRDERS WITH CONTINUOUS DECK SLAB)

IMPORTANT INFORMATION:
THIS PLAN SHEET IS FOR INFORMATION REGARDING THE WATER LINE ATTACHMENT TO THE BRIDGE ONLY. THIS SHEET IS NOT FOR USE IN CONSTRUCTION OF THE BRIDGE BRIDGE DESIGN BY OTHERS

PLANS PREPARED BY:
RK&K
RUMMEL, KLEPPER & KAHL, LLP
900 RIDGEFIELD DRIVE SUITE 350
RALEIGH, NORTH CAROLINA 27609-3960
NC LICENSE NO. F-0112 • (919) 878-9560



PROJECT NO. B-4949
CUMBERLAND COUNTY
STATION: 25+55.00 -L-

SHEET 1 OF 4
STATE OF NORTH CAROLINA
DEPARTMENT OF TRANSPORTATION
RALEIGH
SUPERSTRUCTURE
TYPICAL SECTION
(STAGE 1)

| REVISIONS | | | | | | SHEET NO. |
|-----------|-----|-------|-----|-----|-------|--------------|
| NO. | BY: | DATE: | NO. | BY: | DATE: | TOTAL SHEETS |
| 1 | | | 3 | | | |
| 2 | | | 4 | | | |

DRAWN BY: J.L. WALTON DATE: 5/15/11
CHECKED BY: B.N. GRADY DATE: 8/3/11

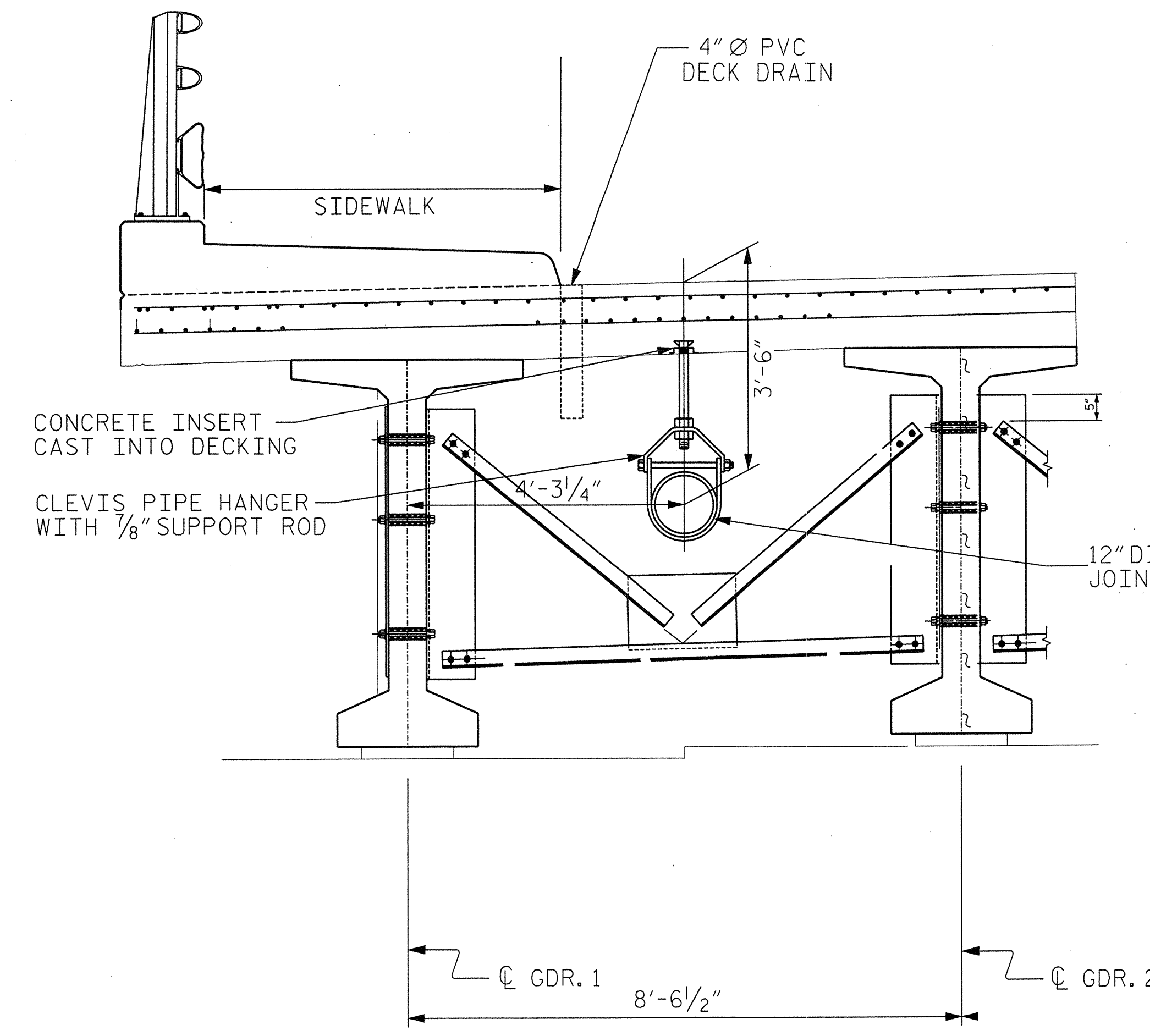
5/8/2012
*****DCN*****
bbadey

8/17/99

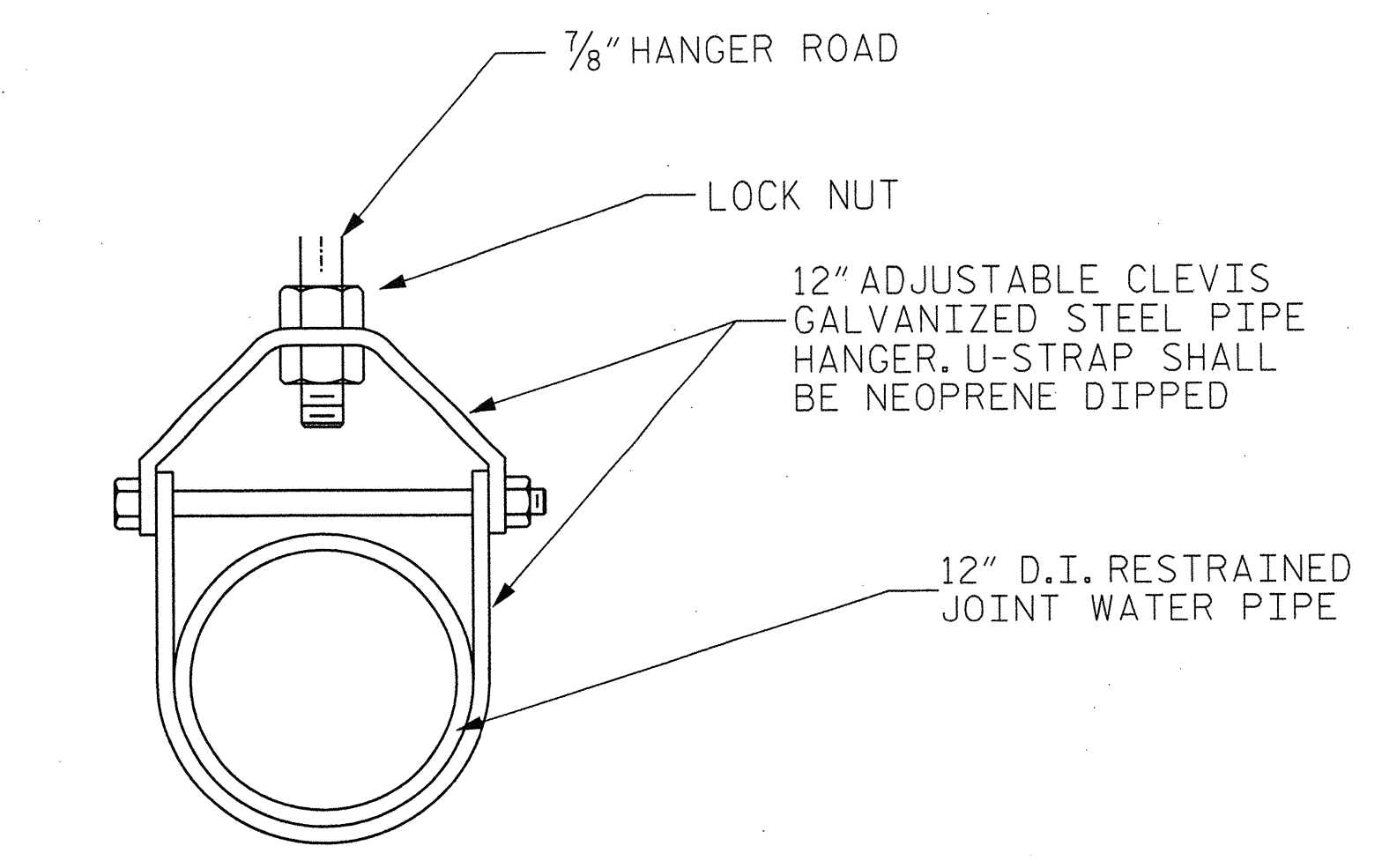
8/18/2002
RUMMEL, KLEPPER & KAHL, LLP
UC-8

| | |
|---------------------------------|-------------------|
| PROJECT REFERENCE NO. B-4949 | SHEET NO. UC-8 |
|---------------------------------|-------------------|

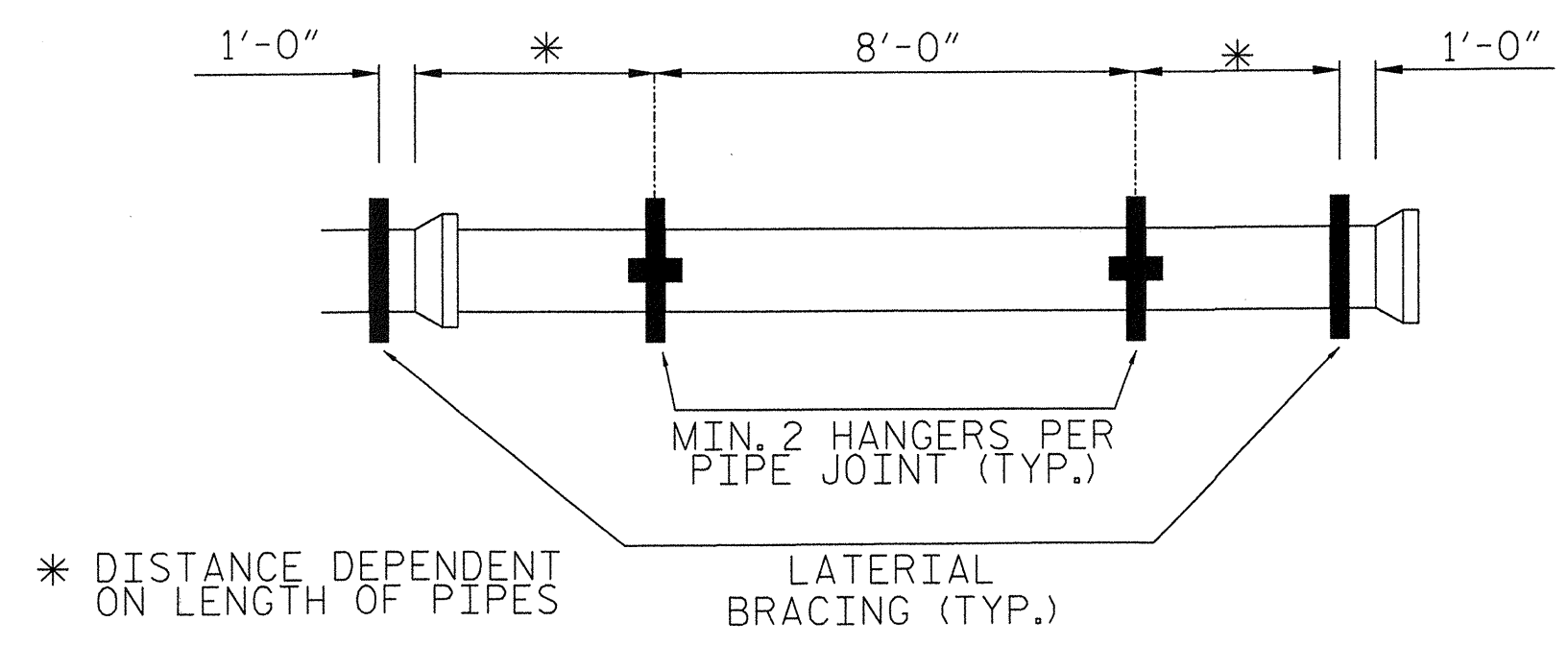
UTILITY CONSTRUCTION



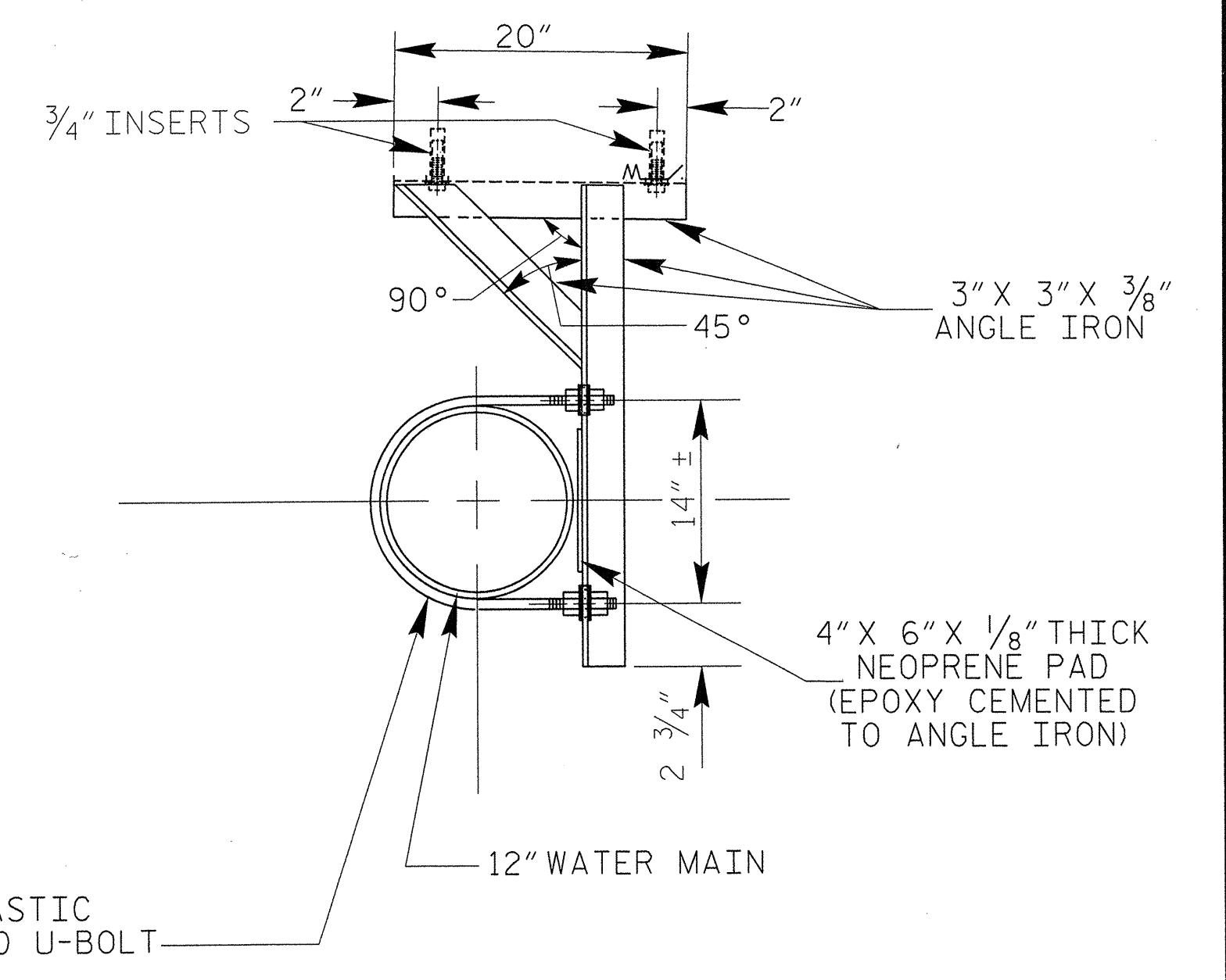
PIPE HANGING DETAIL



PIPE HANGER DETAIL



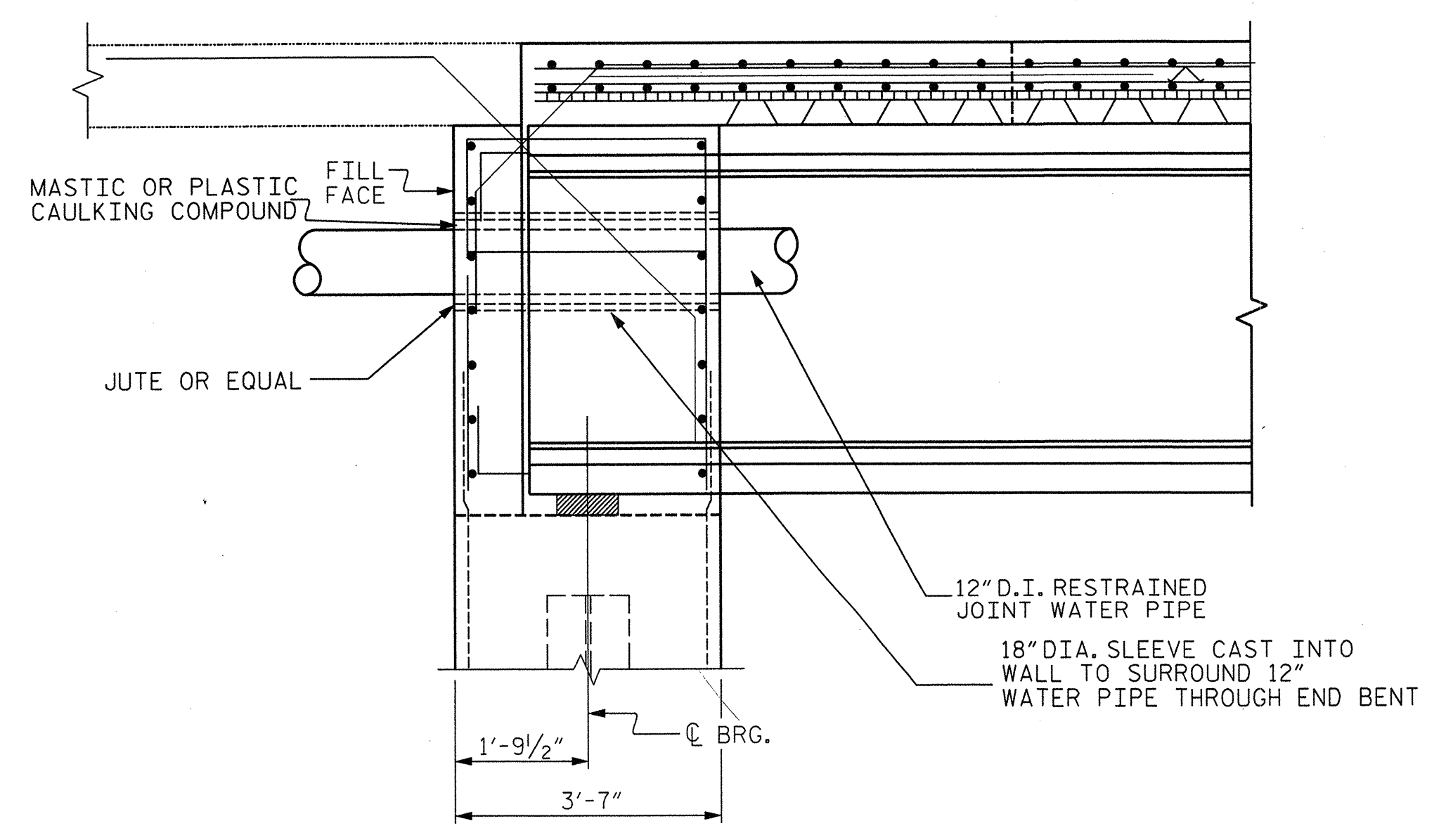
PIPE HANGER SPACING DETAIL



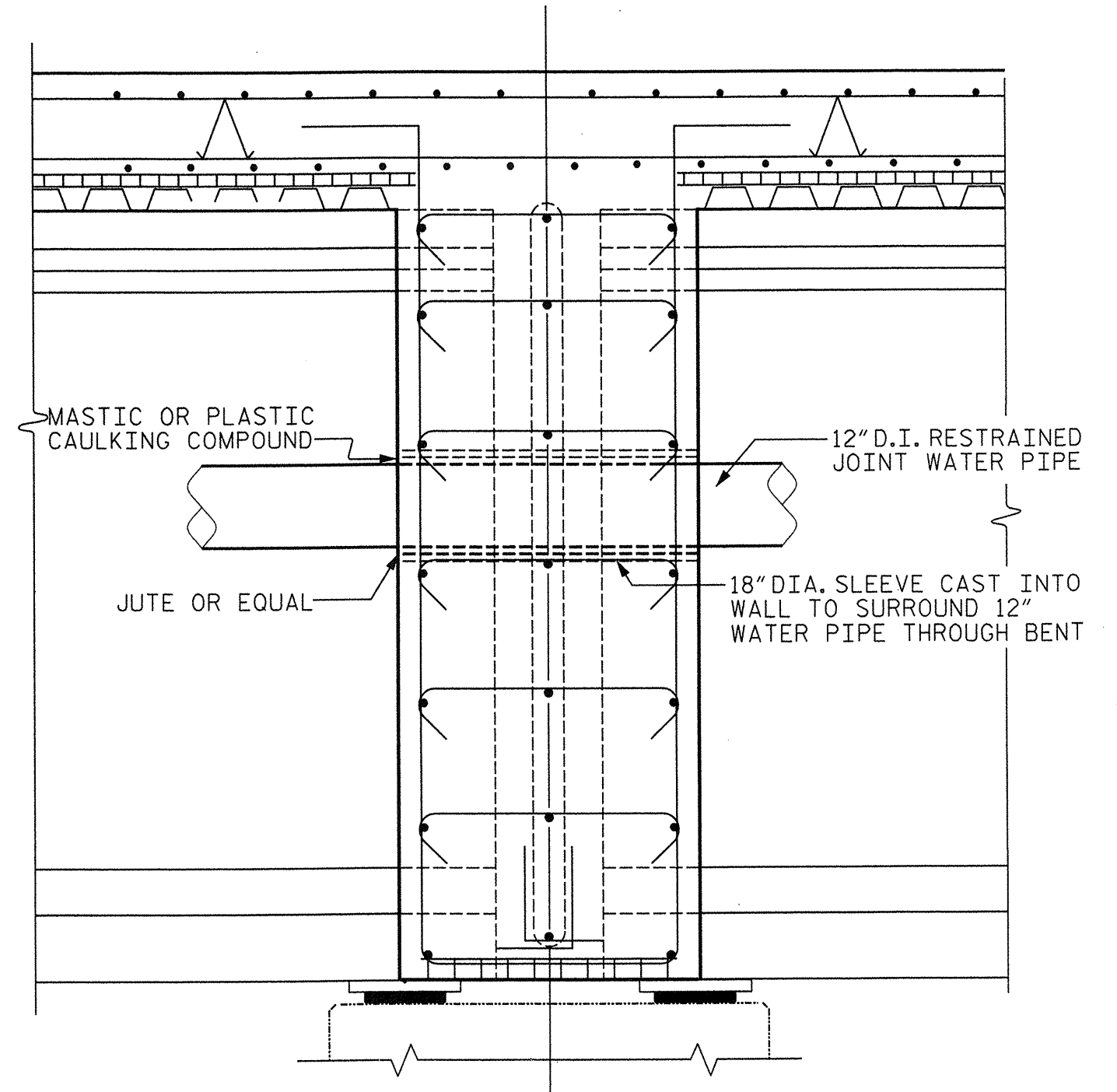
LATERAL BRACE DETAIL

- NOTES:
1. ANGLE IRONS SHALL BE CONNECTED BY ARC WELDING.
 2. HOLES IN ANGLE IRON SHALL BE DRILLED LARGER THAN U-BOLTS AND INSERTS. NO BURNING OF HOLES WILL BE ALLOWED.
 3. LATERAL BRACES SHALL BE INSTALLED ONE PER JOINT OF PIPE.

IMPORTANT INFORMATION:
THIS PLAN SHEET IS FOR INFORMATION REGARDING THE WATER LINE ATTACHMENT TO THE BRIDGE ONLY. THIS SHEET IS NOT FOR USE IN CONSTRUCTION OF THE BRIDGE DESIGN BY OTHERS



SECTION THRU INTEGRAL END BENT



SECTION THRU BENT DIAPHRAGM

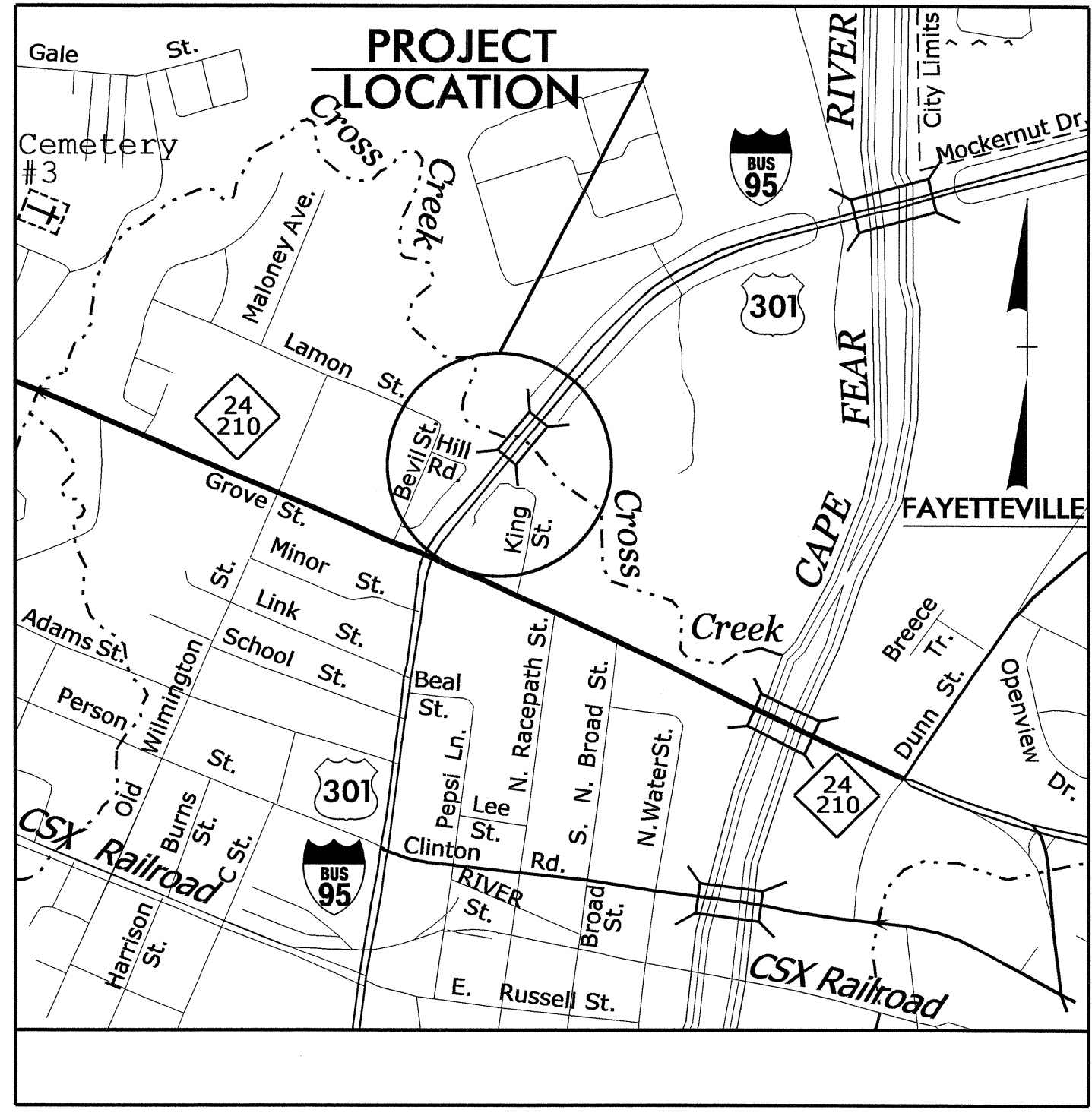
PLANS PREPARED BY :

 RUMMEL, KLEPPER & KAHL, LLP
 900 RIDGEFIELD DRIVE SUITE 350
 RALEIGH, NORTH CAROLINA 27609-3960
 NC LICENSE NO. F-0112 • (919) 878-9560

09/08/99

TIP PROJECT: B-4949

| | |
|------------|-----------|
| T.I.P. NO. | SHEET NO. |
| B-4949 | UO-1 |

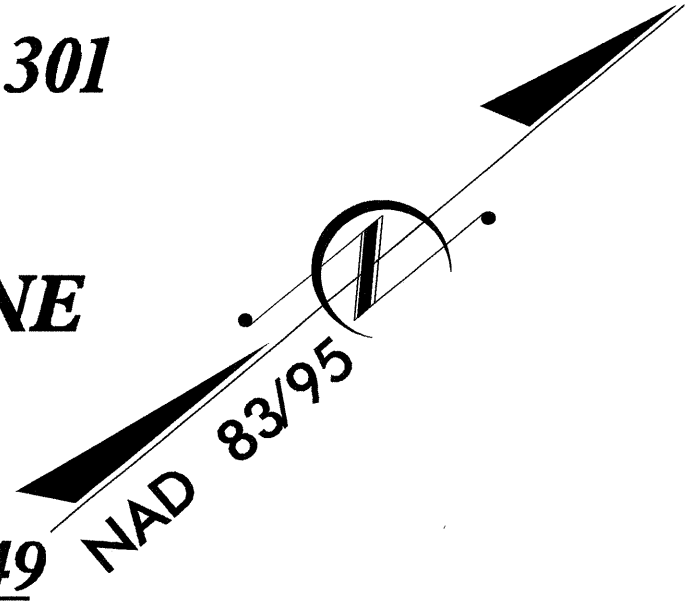


STATE OF NORTH CAROLINA
DIVISION OF HIGHWAYS

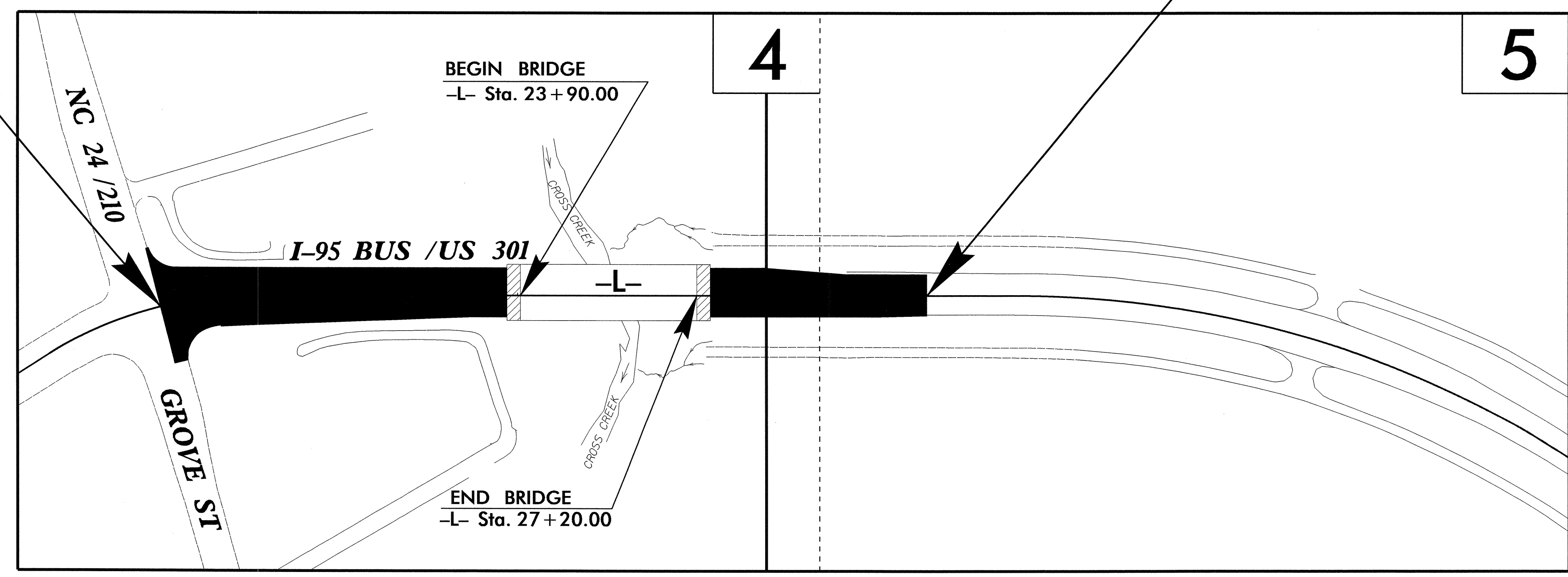
**UTILITIES BY OTHERS PLANS
CUMBERLAND COUNTY**

LOCATION: BRIDGE NO. 61 OVER CROSS CREEK ON I-95 BUSINESS/US 301

TYPE OF WORK: RELOCATION OF OVERHEAD POWER AND TELEPHONE



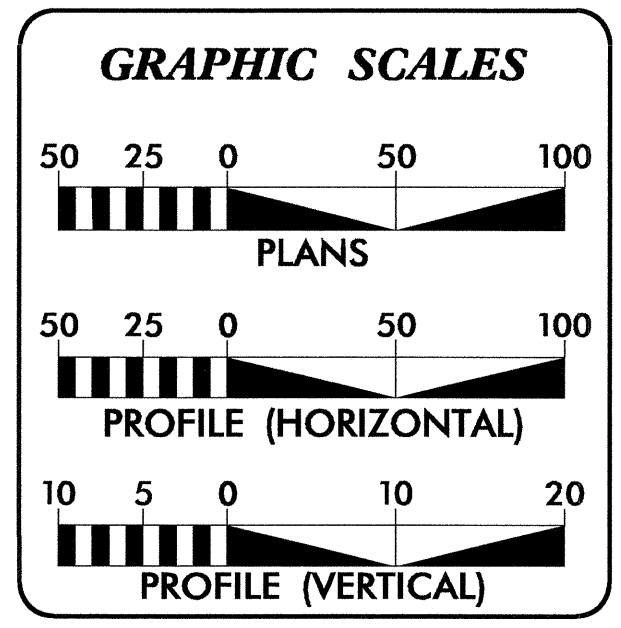
BEGIN PROJECT B-4949
-L- POC Sta. 17+15.00



END PROJECT B-4949
-L- POT Sta. 31+50.00

CLEARING ON THIS PROJECT SHOULD BE PERFORMED TO THE LIMITS ESTABLISHED BY METHOD III.

THIS PROJECT IS WITHIN THE MUNICIPAL BOUNDARIES OF FAYETTEVILLE.



| INDEX OF SHEETS | |
|-----------------|-------------------------------|
| SHEET NO. | DESCRIPTION |
| UO-1 | TITLE SHEET |
| UO-2 THRU UO-3 | UTILITY BY OTHERS PLAN SHEETS |

| UTILITY OWNERS ON PROJECT |
|--|
| (1) PUBLIC WORKS COMMISSION OF FAYETTEVILLE POWER |
| (2) CENTURYLINK TELEPHONE |

PREPARED IN THE OFFICE OF:
**DIVISION OF HIGHWAYS
UTILITIES ENGINEERING
SECTION**

1591 MAIL SERVICES CENTER
RALEIGH NC 27699-1591
PHONE (919) 250-4128
FAX (919) 250-4119

| | |
|--------------------------------|---|
| <u>Roger Worthington, P.E.</u> | UTILITIES SECTION ENGINEER |
| <u>Corey Bousquet, P.E.</u> | UTILITIES SQUAD LEADER PROJECT ENGINEER |
| <u>Kevin Martin</u> | UTILITIES PROJECT DESIGNER |

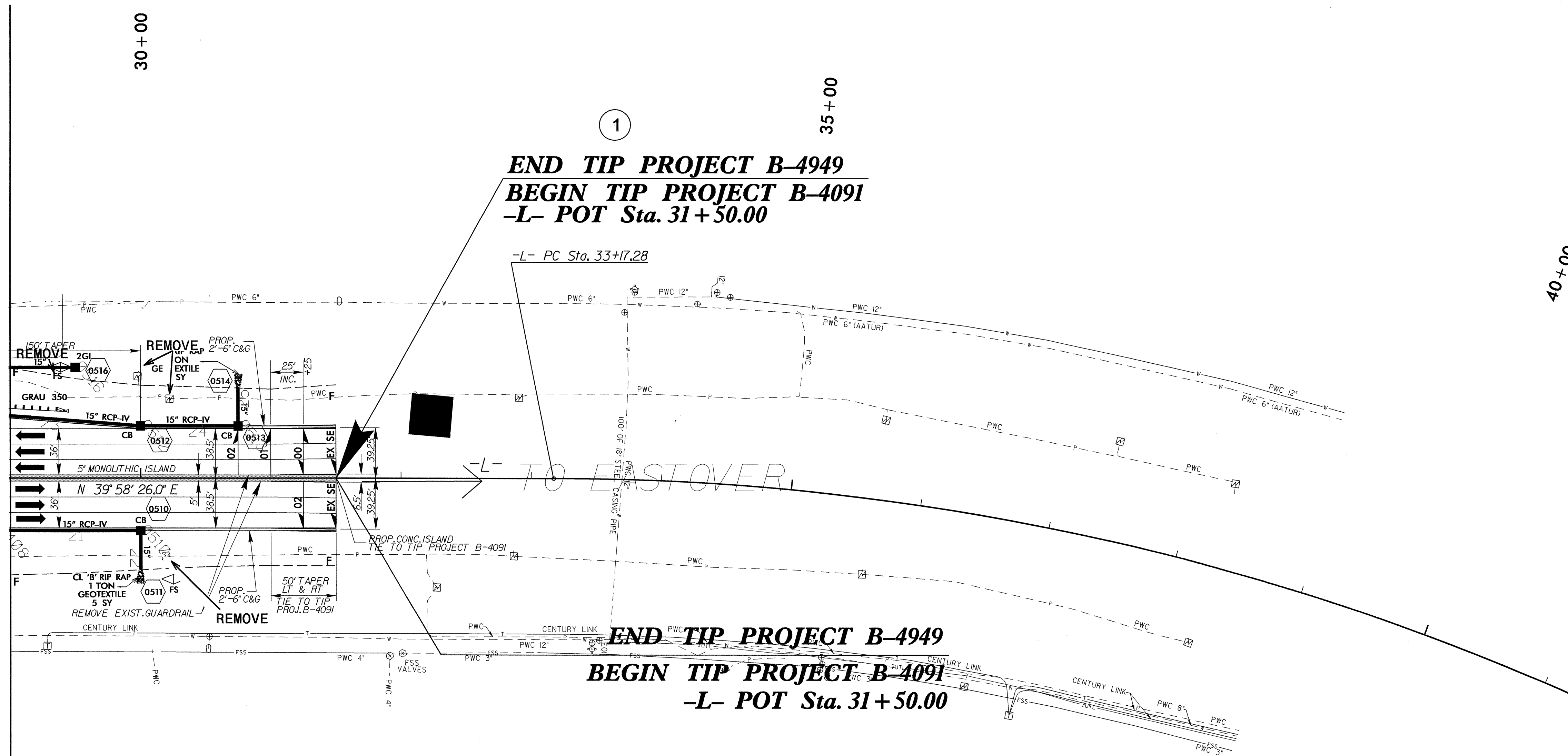
19-JUN-2012 12:17 R:\Utilities\RDY_UH\Proj\B-4949_UO-1.tsh.dgn \$\$\$USERNAME\$\$\$

UTILITIES BY OTHERS

NOTE:
ALL PROPOSED UTILITY WORK
SHOWN ON THIS SHEET WILL
BE DONE BY OTHERS

-L-
PI Sta 39+23.12
 $\Delta = 35^{\circ}12'00.0''$ (RT)
D = 3^{\circ}00'00.0''
L = 1,173.33'
T = 605.84'
R = 1,909.86'

MATCH LINE SEE PLAN SHEET UO-2 -L- STA. 29+00



END TIP PROJECT B-4949
BEGIN TIP PROJECT B-4091
-L- POT Sta. 31+50.00

-L- PC Sta. 33+17.28

END TIP PROJECT B-4949
BEGIN TIP PROJECT B-4091
-L- POT Sta. 31+50.00

NOTES:

1. THE CONTROL DATA FOR THIS PROJECT CAN BE FOUND ELECTRONICALLY BY PROJECT CONTROL DATA AT:
[HTTP://WWW.NCDOT.ORG/DOH/PRECONSTRUCT/HIGHWAY/LOCATION/PROJECT/](http://www.ncdot.org/doh/preconstruct/highway/location/project/)

THE FILES TO BE FOUND ARE AS FOLLOWS:
B4949_LS_CONTROL_101117.TXT

5/14/09
24-MAY-2012 10:51
R:\Utilities\B-4949_Ut_r.dwg U:\Projects\B-4949_Ut_r.dwg U:\Projects\B-4949_Ut_r.dwg U:\Projects\B-4949_Ut_r.dwg