

STATE	STATE PROJECT REFERENCE NO.	SHEET NO.	TOTAL SHEETS
N.C.	B-5178	EC-1	
STATE PROJ. NO.	F.A. PROJ. NO.	DESCRIPTION	

**EROSION AND SEDIMENT CONTROL MEASURES**

Std. #	Description	Symbol
1630.03	Temporary Silt Ditch	TD
1630.05	Temporary Diversion	TD
1605.01	Temporary Silt Fence	III III III
1606.01	Special Sediment Control Fence	△△△△△△△△
1622.01	Temporary Berms and Slope Drains	T
1630.02	Silt Basin Type B	□
1633.01	Temporary Rock Silt Check Type-A	⊗
	Temporary Rock Silt Check Type-A with Matting and Polyacrylamide (PAM)	⊗
1633.02	Temporary Rock Silt Check Type-B	▶
	Wattle / Coir Fiber Wattle	⌒
	Wattle / Coir Fiber Wattle with Polyacrylamide (PAM)	⌒
1634.01	Temporary Rock Sediment Dam Type-A	⊞
1634.02	Temporary Rock Sediment Dam Type-B	⊞
1635.01	Rock Pipe Inlet Sediment Trap Type-A	⌒
1635.02	Rock Pipe Inlet Sediment Trap Type-B	⌒
1630.04	Stilling Basin	□
1630.06	Special Stilling Basin	□
	Rock Inlet Sediment Trap:	
1632.01	Type A	A
1632.02	Type B	B
1632.03	Type C	C
	Skimmer Basin	□
	Tiered Skimmer Basin	□
	Infiltration Basin	□

**THIS PROJECT CONTAINS EROSION CONTROL PLANS FOR CLEARING AND GRUBBING PHASE OF CONSTRUCTION.**

**THIS PROJECT HAS BEEN DESIGNED TO SENSITIVE WATERSHED STANDARDS.**

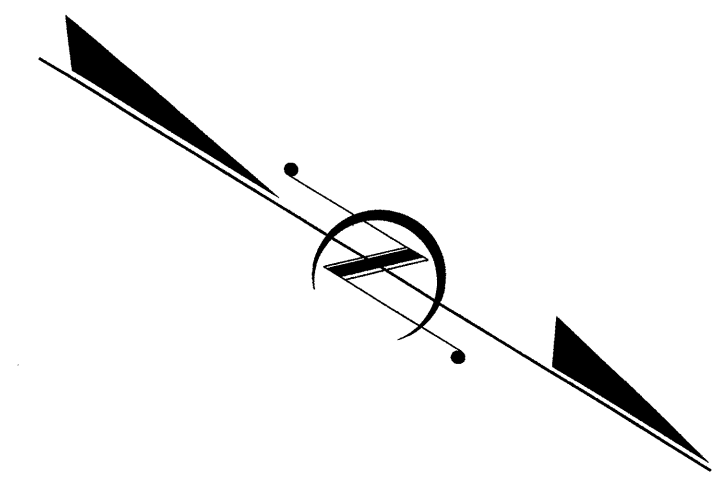
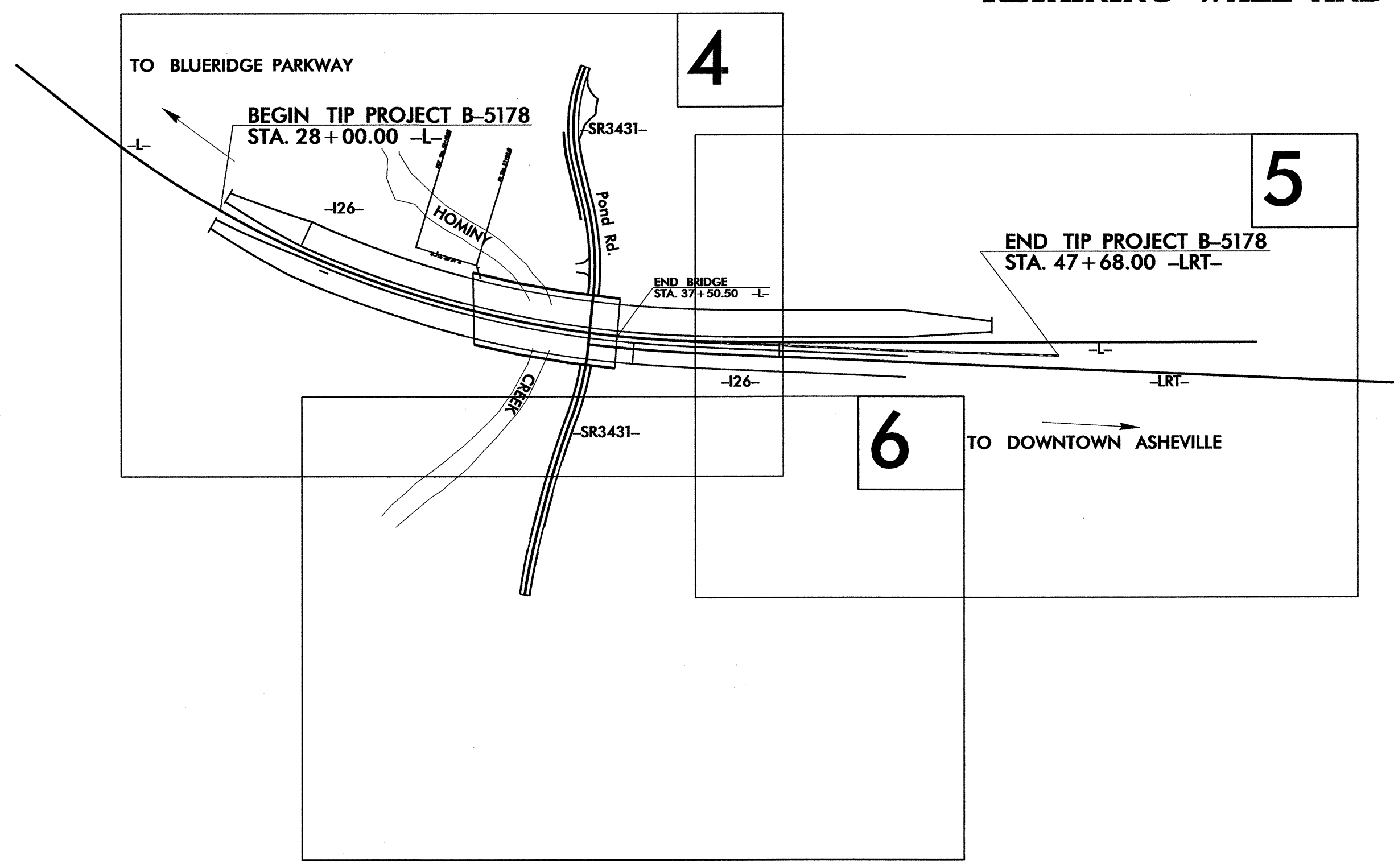
**ENVIRONMENTALLY SENSITIVE AREA(S) EXIST ON THIS PROJECT**  
 Refer To E. C. Special Provisions for Special Considerations.

**303(d) IMPAIRED WATER(S) EXIST ON THIS PROJECT**  
 303(d) Impaired Water Zone(s) Exist  
 From Sta. Begin to Sta. End  
 Refer To E. C. Special Provisions for Special Considerations.

STATE OF NORTH CAROLINA  
 DIVISION OF HIGHWAYS  
 PLAN FOR PROPOSED  
 HIGHWAY EROSION CONTROL  
**BUNCOMBE COUNTY**

**LOCATION: REPLACEMENT OF BRIDGES NO. 235 AND 238 ON I-26 OVER SR. 3431 (POND RD.) AND HOMINY CREEK**

**TYPE OF WORK: RESURFACING, PAVING, GRADING, DRAINAGE, STRUCTURE, STRUCTURE REMOVAL, GUARDRAIL, RETAINING WALL AND MEDIAN BARRIER**



**TIP PROJECT: B-5178**

**GRAPHIC SCALE**

0

PLANS

0

PROFILE (HORIZONTAL)

0

PROFILE (VERTICAL)

ROADSIDE ENVIRONMENTAL UNIT  
 DIVISION OF HIGHWAYS  
 STATE OF NORTH CAROLINA

THESE EROSION AND SEDIMENT CONTROL PLANS COMPLY WITH THE REGULATIONS SET FORTH BY THE NCG-010000 GENERAL CONSTRUCTION PERMIT EFFECTIVE AUGUST 3, 2011 ISSUED BY THE NORTH CAROLINA DEPARTMENT OF ENVIRONMENT AND NATURAL RESOURCES DIVISION OF WATER QUALITY.

Prepared In the Office of:  
**ROADSIDE ENVIRONMENTAL UNIT**  
 1 South Wilmington St.  
 Raleigh, NC 27611  
**2012 STANDARD SPECIFICATIONS**

Roadway Standard Drawings

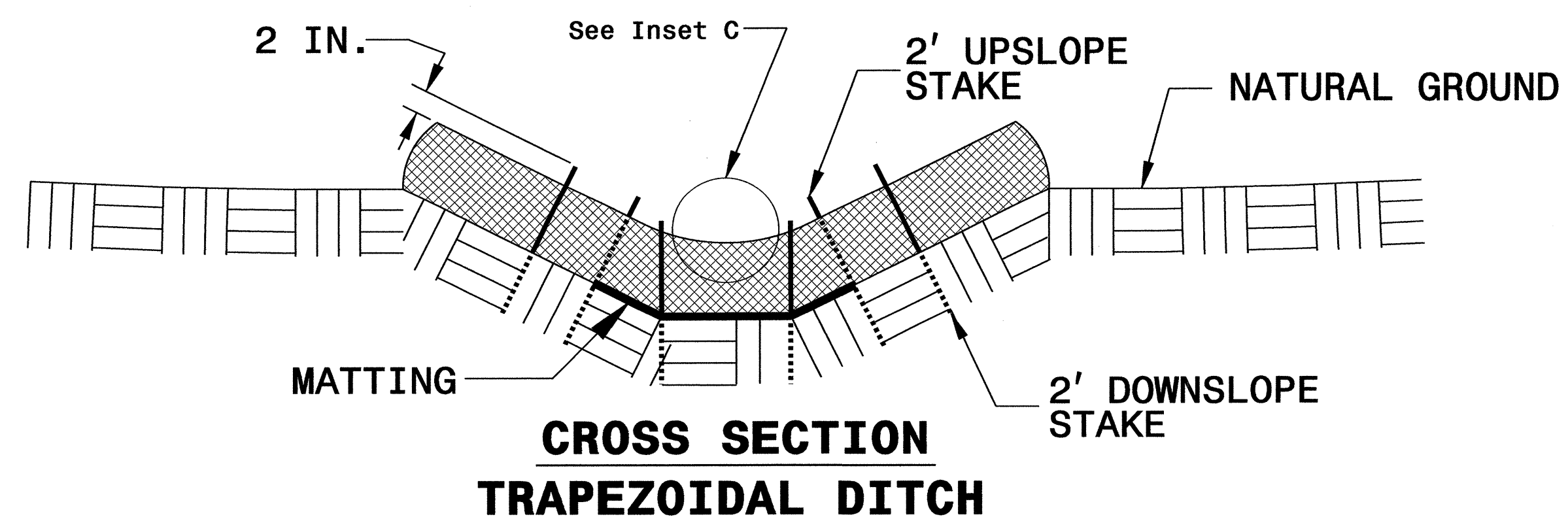
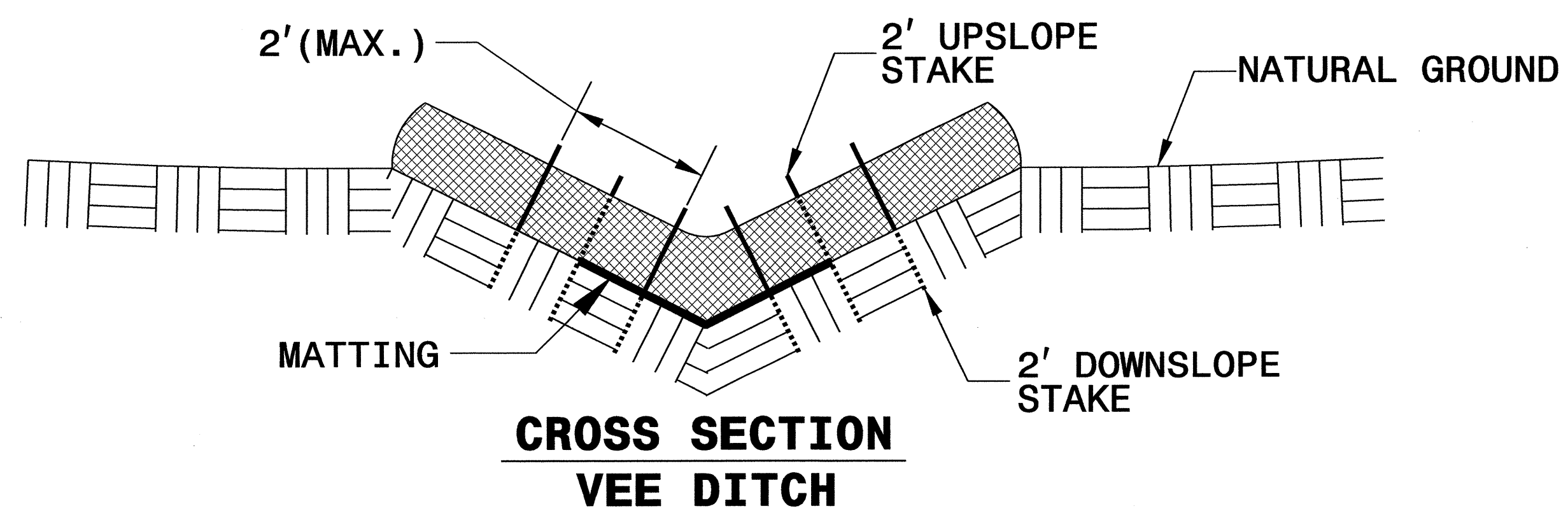
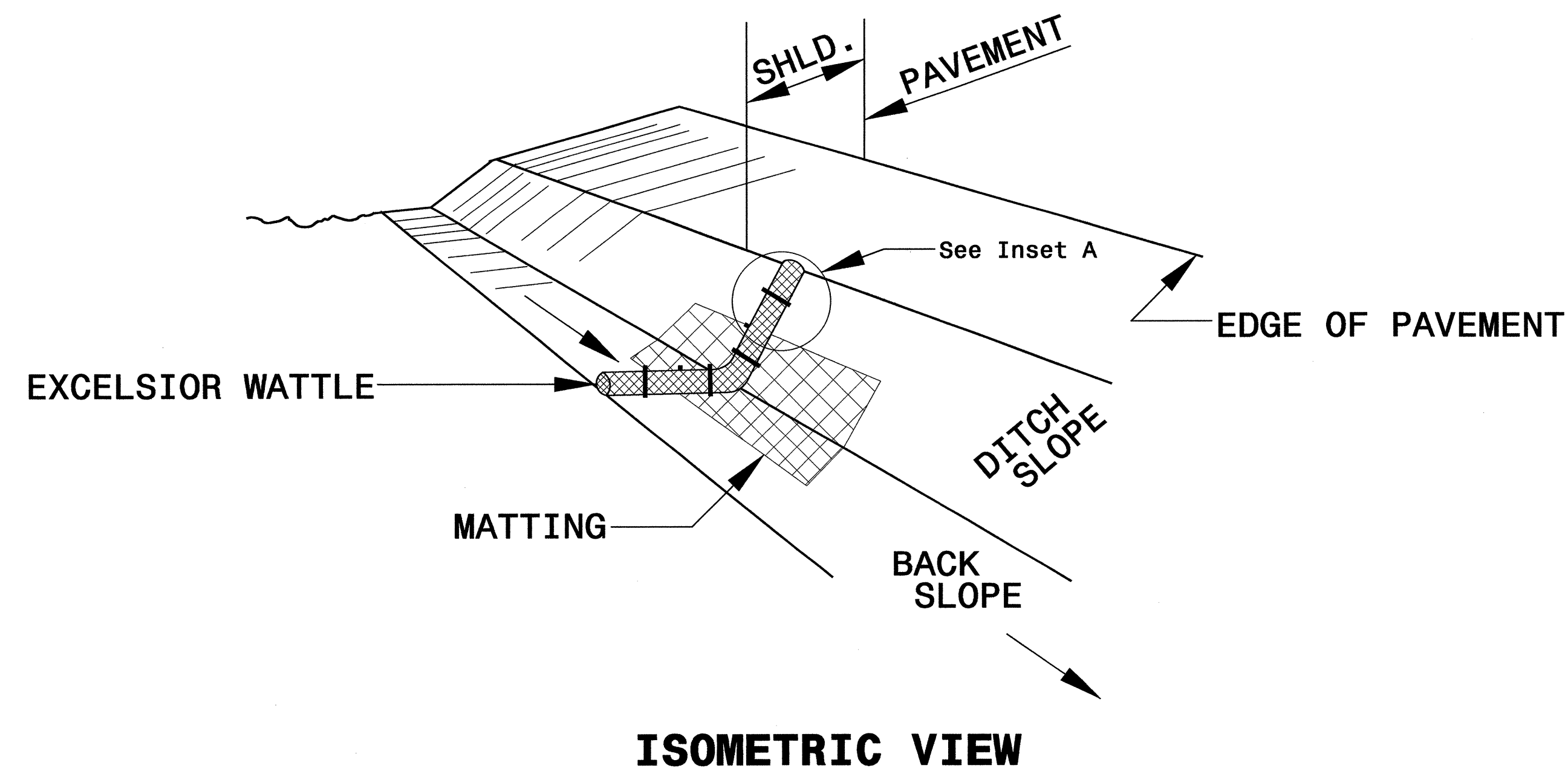
The following roadway english standards as appear in "Roadway Standard Drawings"- Roadway Design Unit - N. C. Department of Transportation - Raleigh, N. C., dated January 2012 and the latest revision thereto are applicable to this project and by reference hereby are considered a part of these plans.

1604.01 Railroad Erosion Control Detail	1632.01 Rock Inlet Sediment Trap Type A
1605.01 Temporary Silt Fence	1632.02 Rock Inlet Sediment Trap Type B
1606.01 Special Sediment Control Fence	1632.03 Rock Inlet Sediment Trap Type C
1607.01 Gravel Construction Entrance	1633.01 Temporary Rock Silt Check Type A
1622.01 Temporary Berms and Slope Drains	1633.02 Temporary Rock Silt Check Type B
1630.01 Riser Basin	1634.01 Temporary Rock Sediment Dam Type A
1630.02 Silt Basin Type B	1634.02 Temporary Rock Sediment Dam Type B
1630.03 Temporary Silt Ditch	1635.01 Rock Pipe Inlet Sediment Trap Type A
1630.04 Stilling Basin	1635.02 Rock Pipe Inlet Sediment Trap Type B
1630.05 Temporary Diversion	1640.01 Coir Fiber Baffle
1630.06 Special Stilling Basin	1645.01 Temporary Stream Crossing
1631.01 Matting Installation	

27-APR-2012 16:12  
 R:\NCEU\PROJECTS\B-5178-EC-tsh.dgn  
 tsh

PROJECT REFERENCE NO. B-5178	SHEET NO. EC-2
RW SHEET NO.	
ROADWAY DESIGN ENGINEER	HYDRAULICS ENGINEER

# WATTLE WITH POLYACRYLAMIDE (PAM) DETAIL



**NOTES:**

USE MINIMUM 12 IN. DIAMETER EXCELSIOR WATTLE.

USE 2 FT. WOODEN STAKES WITH A 2 IN. BY 2 IN. NOMINAL CROSS SECTION.

ONLY INSTALL WATTLE(S) TO A HEIGHT IN DITCH SO FLOW WILL NOT WASH AROUND WATTLE AND SCOUR DITCH SLOPES AND AS DIRECTED.

INSTALL A MINIMUM OF 2 UPSLOPE STAKES AND 4 DOWNSLOPE STAKES AT AN ANGLE TO WEDGE WATTLE TO BOTTOM OF DITCH.

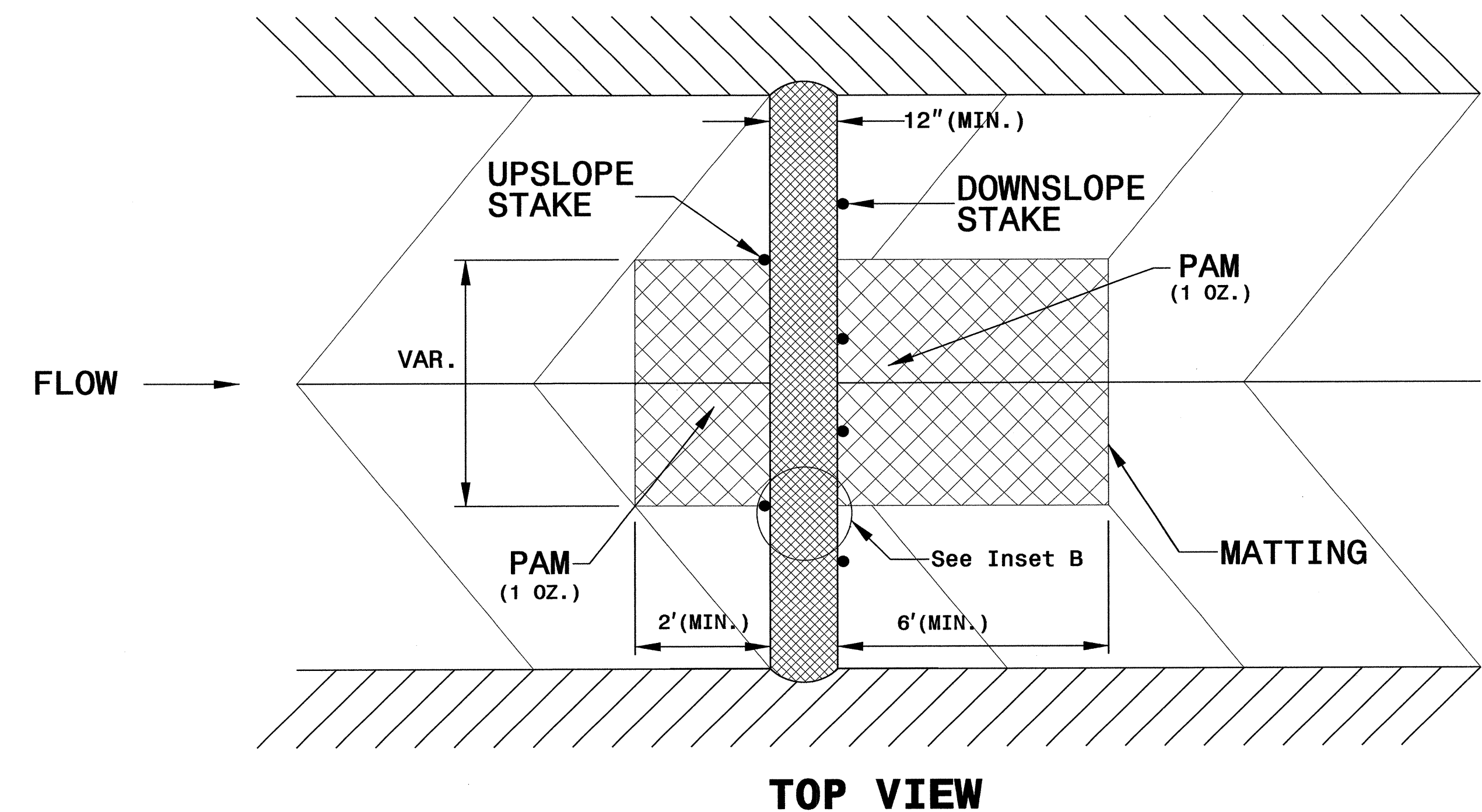
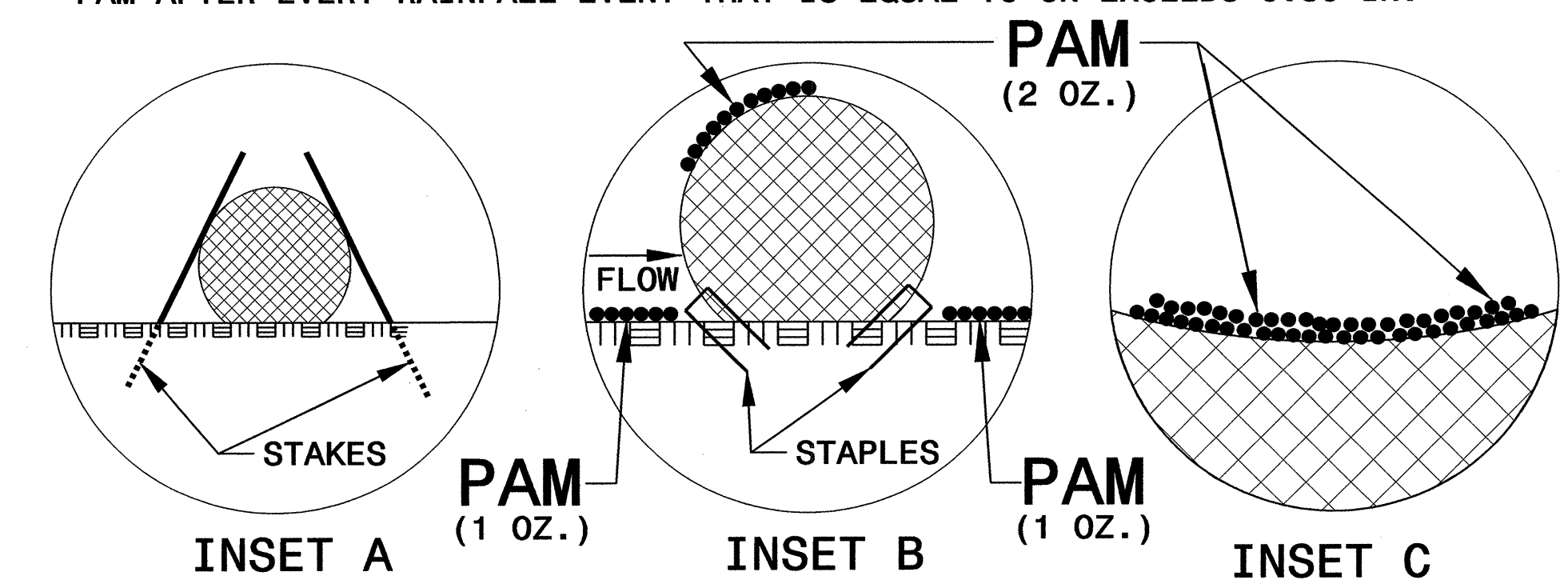
PROVIDE STAPLES MADE OF 0.125 IN. DIAMETER STEEL WIRE FORMED INTO A U SHAPE NOT LESS THAN 12" IN LENGTH.

INSTALL STAPLES APPROXIMATELY EVERY 1 LINEAR FOOT ON BOTH SIDES OF WATTLE AND AT EACH END TO SECURE IT TO THE SOIL.

INSTALL MATTING IN ACCORDANCE WITH SECTION 1631 OF THE STANDARD SPECIFICATIONS.

PRIOR TO POLYACRYLAMIDE (PAM) APPLICATION, OBTAIN A SOIL SAMPLE FROM PROJECT LOCATION, AND FROM OFFSITE MATERIAL, AND ANALYZE FOR APPROPRIATE PAM FLOCCULANT TO BE APPLIED TO EACH WATTLE.

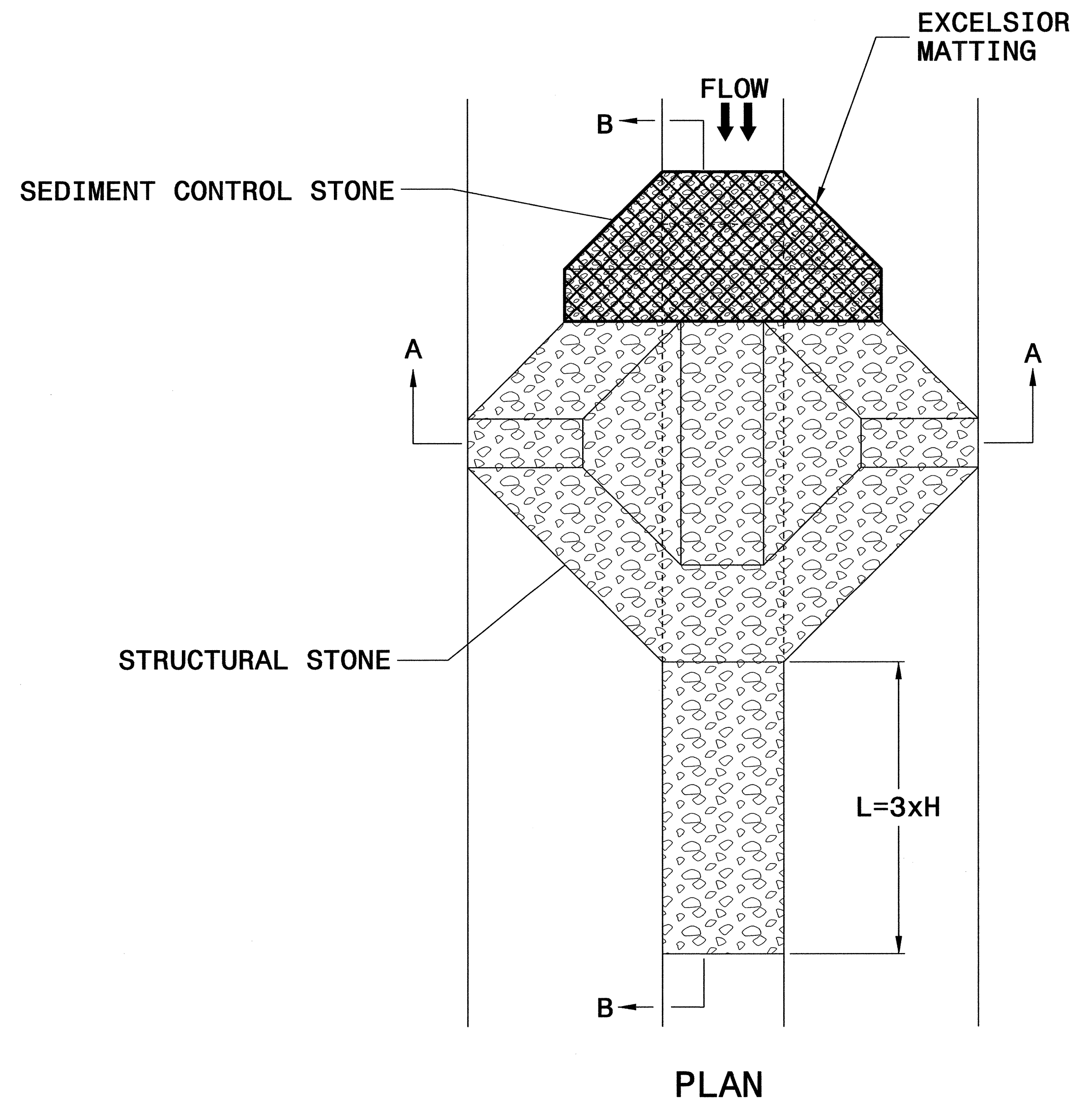
INITIALLY APPLY 2 OUNCES OF ANIONIC OR NEUTRALLY CHARGED PAM OVER WATTLE WHERE WATER WILL FLOW AND 1 OUNCE OF PAM ON MATTING ON EACH SIDE OF WATTLE. REAPPLY PAM AFTER EVERY RAINFALL EVENT THAT IS EQUAL TO OR EXCEEDS 0.50 IN.





PROJECT REFERENCE NO. B-5178	SHEET NO. EC-2A
RW SHEET NO.	
ROADWAY DESIGN ENGINEER	HYDRAULICS ENGINEER

# TEMPORARY ROCK SILT CHECK TYPE 'A' WITH EXCELSIOR MATTING AND POLYACRYLAMIDE (PAM)

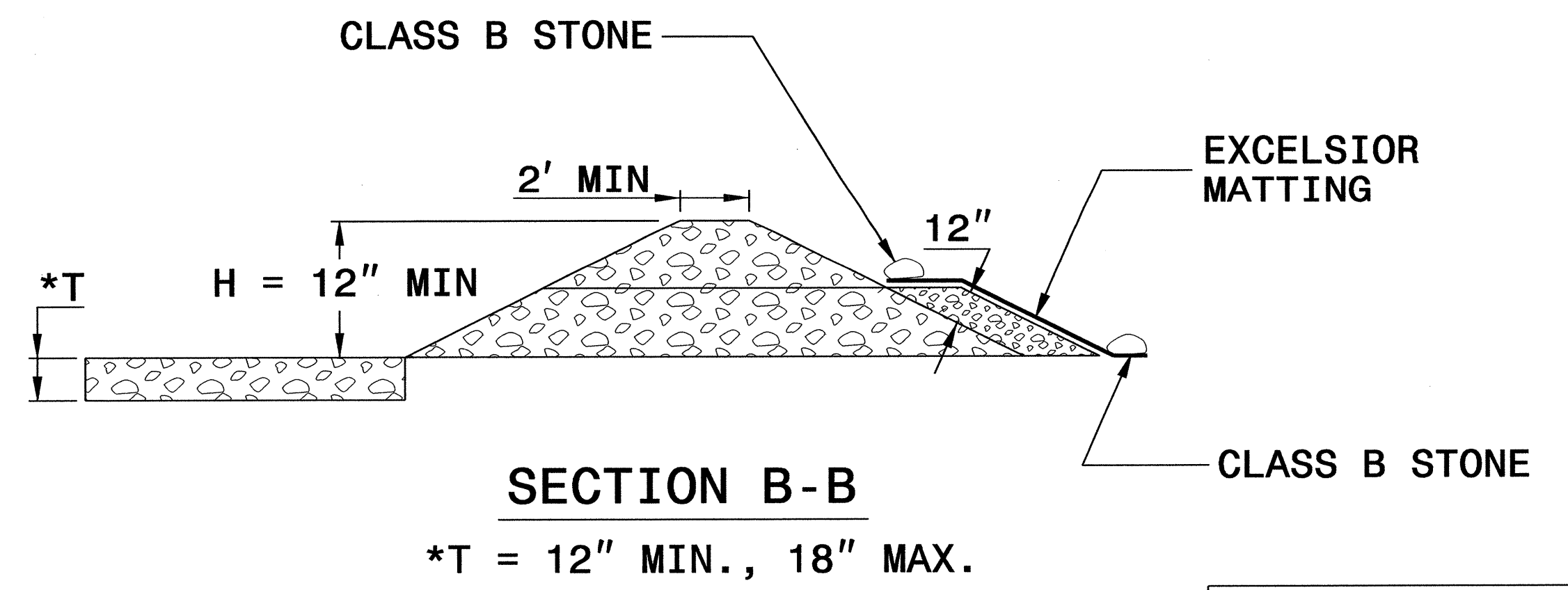
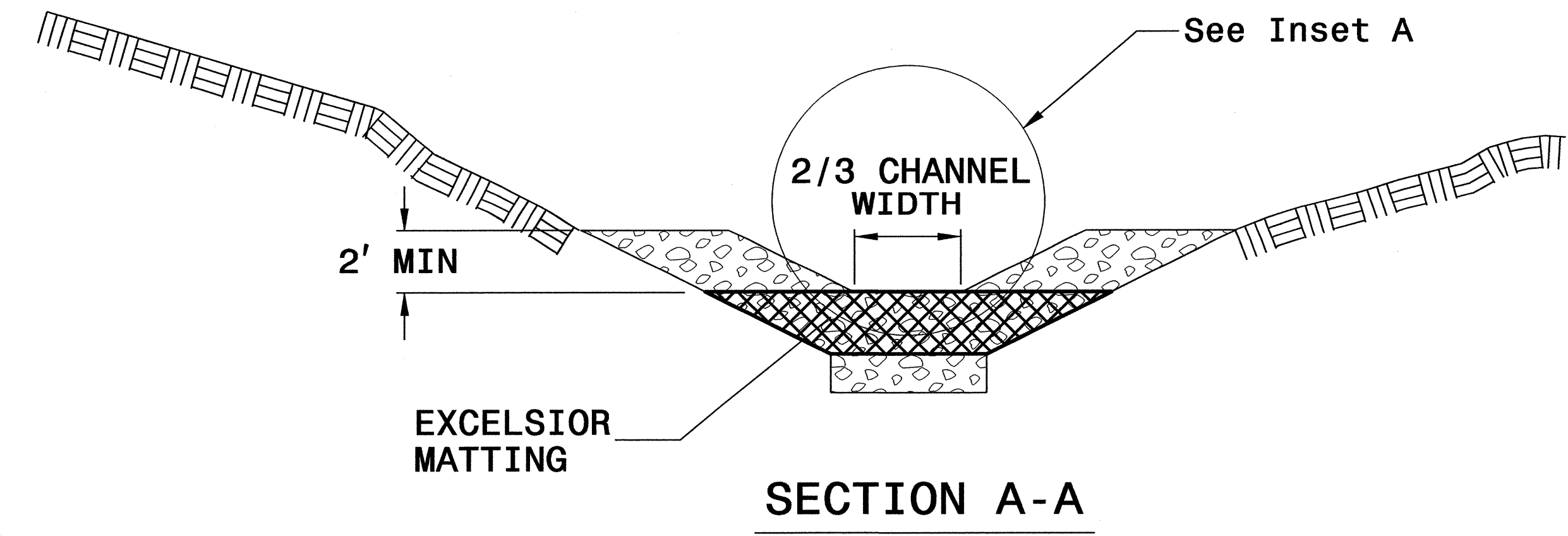
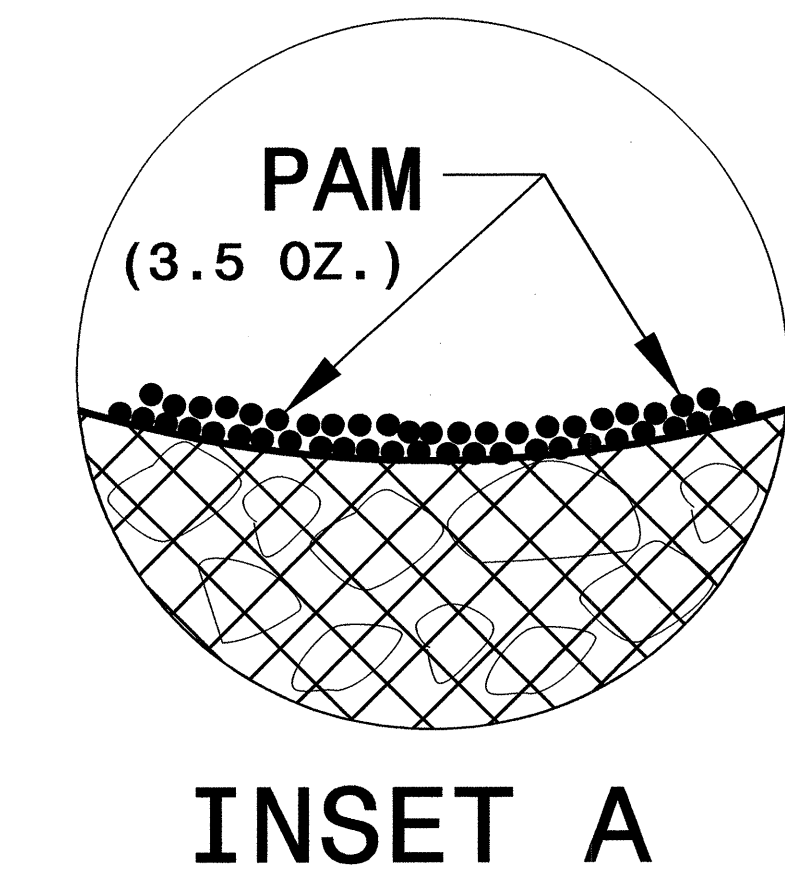


## NOTES

USE EXCELSIOR FOR MATTING MATERIAL AND ANCHOR MATTING SECTION AT TOP AND BOTTOM WITH CLASS B STONE.

PRIOR TO POLYACRYLAMIDE (PAM) APPLICATION, OBTAIN A SOIL SAMPLE FROM PROJECT LOCATION, AND FROM OFFSITE MATERIAL, AND ANALYZE FOR APPROPRIATE PAM FLOCCULANT TO BE APPLIED TO EACH ROCK SILT CHECK.

INITIALLY APPLY 3.5 OUNCES OF POLYACRYLAMIDE (PAM) TO TOP OF MATTING SECTION AND AFTER EVERY RAINFALL EVENT THAT EQUALS OR EXCEEDS 0.50 INCHES.



NOT TO SCALE



DIVISION OF HIGHWAYS  
STATE OF NORTH CAROLINA

---



---

PROJECT REFERENCE NO. <i>B-5178</i>	SHEET NO. <i>EC-3A</i>
ROADWAY DESIGN ENGINEER	HYDRAULICS ENGINEER

# ***SOIL STABILIZATION TIMEFRAMES***

<i>SITE DESCRIPTION</i>	<i>STABILIZATION TIME</i>	<i>TIMEFRAME EXCEPTIONS</i>
PERIMETER DIKES, SWALES, DITCHES AND SLOPES	7 DAYS	NONE
HIGH QUALITY WATER (HQW) ZONES	7 DAYS	NONE
SLOPES STEEPER THAN 3:1	7 DAYS	IF SLOPES ARE 10' OR LESS IN LENGTH AND ARE NOT STEEPER THAN 2:1, 14 DAYS ARE ALLOWED.
SLOPES 3:1 OR FLATTER	14 DAYS	7 DAYS FOR SLOPES GREATER THAN 50' IN LENGTH.
ALL OTHER AREAS WITH SLOPES FLATTER THAN 4:1	14 DAYS	NONE, EXCEPT FOR PERIMETERS AND HQW ZONES.



PROJECT REFERENCE NO.	SHEET NO.
B-5178	EC-4/CONST.4
R/W SHEET NO.	
ROADWAY DESIGN ENGINEER	HYDRAULICS ENGINEER

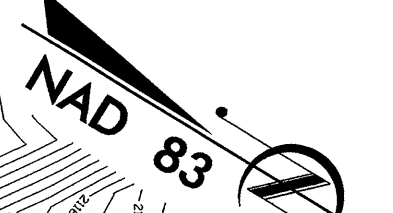
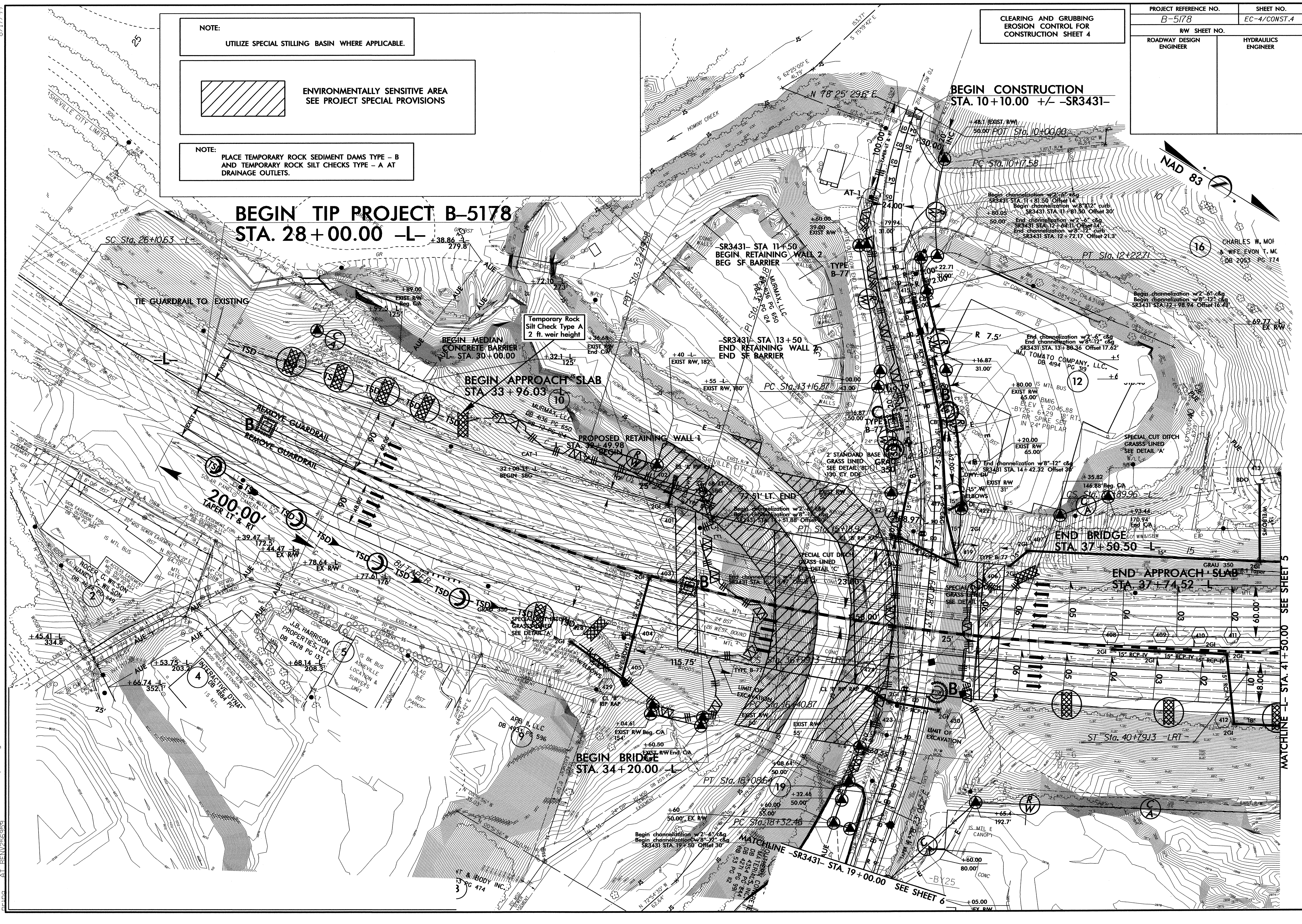
CLEARING AND GRUBBING  
EROSION CONTROL FOR  
CONSTRUCTION SHEET 4

NOTE:  
UTILIZE SPECIAL STILLING BASIN WHERE APPLICABLE.

ENVIRONMENTALLY SENSITIVE AREA  
SEE PROJECT SPECIAL PROVISIONS

NOTE:  
PLACE TEMPORARY ROCK SEDIMENT DAMS TYPE - B  
AND TEMPORARY ROCK SILT CHECKS TYPE - A AT  
DRAINAGE OUTLETS.

**BEGIN TIP PROJECT B-5178**  
**STA. 28+00.00 -L-**



CHARLES W. MOF  
WIFE: EVON T. MC  
DB 2053 PG 174

Begin channelization w/2'-6" c&g  
SR3431 STA. 12+64.11 Offset 14'  
End channelization w/8'-12" curb  
SR3431 STA. 12+72.17 Offset 21.3'

End channelization w/2'-6" c&g  
SR3431 STA. 13+88.35 Offset 17.62'

End channelization w/8'-12" c&g  
SR3431 STA. 14+42.32 Offset 30'

END BRIDGE  
STA. 37+50.50 -L-

END APPROACH SLAB  
STA. 37+74.52 -L-

BEGIN BRIDGE  
STA. 34+20.00 -L-

MATCHLINE -SR3431- STA. 19+00.00 SEE SHEET 6

MATCHLINE -L- STA. 41+50.00 SEE SHEET 5

8/17/09

20-PR-2012 08:07 Design: B-5178.EC.psh+4.dgn  
PLotted: 8/17/09 10:26:38 AM



8/17/99

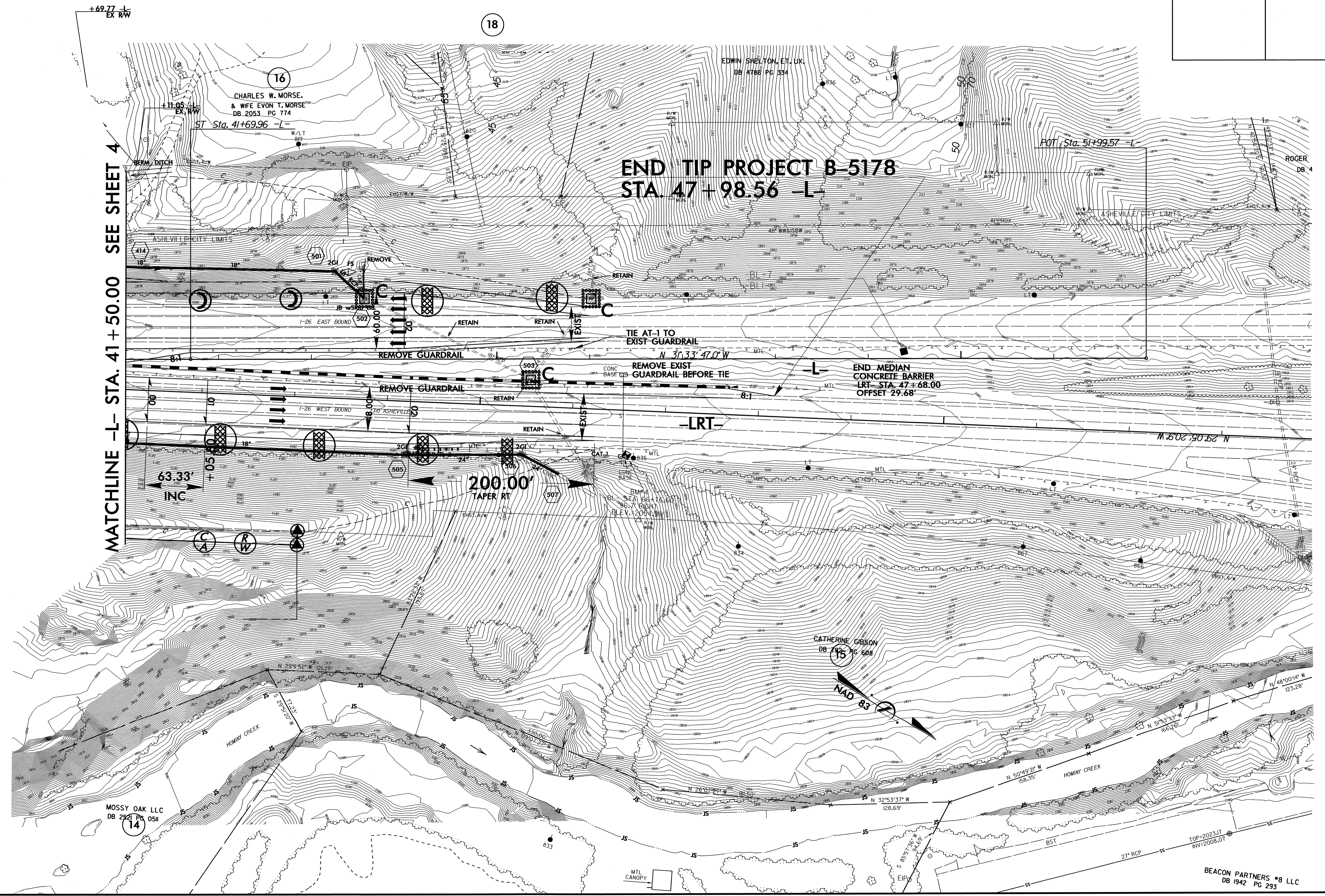
2'-6" c&g  
1"-12" c&g  
Scale 16.43'

PROJECT REFERENCE NO.		SHEET NO.	
B-5178		EC-5/CONST.5	
RW SHEET NO.			
ROADWAY DESIGN ENGINEER		HYDRAULICS ENGINEER	

NOTE: PLACE TEMPORARY ROCK SEDIMENT DAMS TYPE - B AND TEMPORARY ROCK SILT CHECKS TYPE - A AT DRAINAGE OUTLETS.

CLEARING AND GRUBBING EROSION CONTROL FOR CONSTRUCTION SHEET 5

MATCHLINE -L- STA. 41 + 50.00 SEE SHEET 4



30-APR-2016 08:27 Design: B-5178-EC-psh5.dgn  
R01: rpr  
DRAWN BY: RPR  
CHECKED BY: RPR

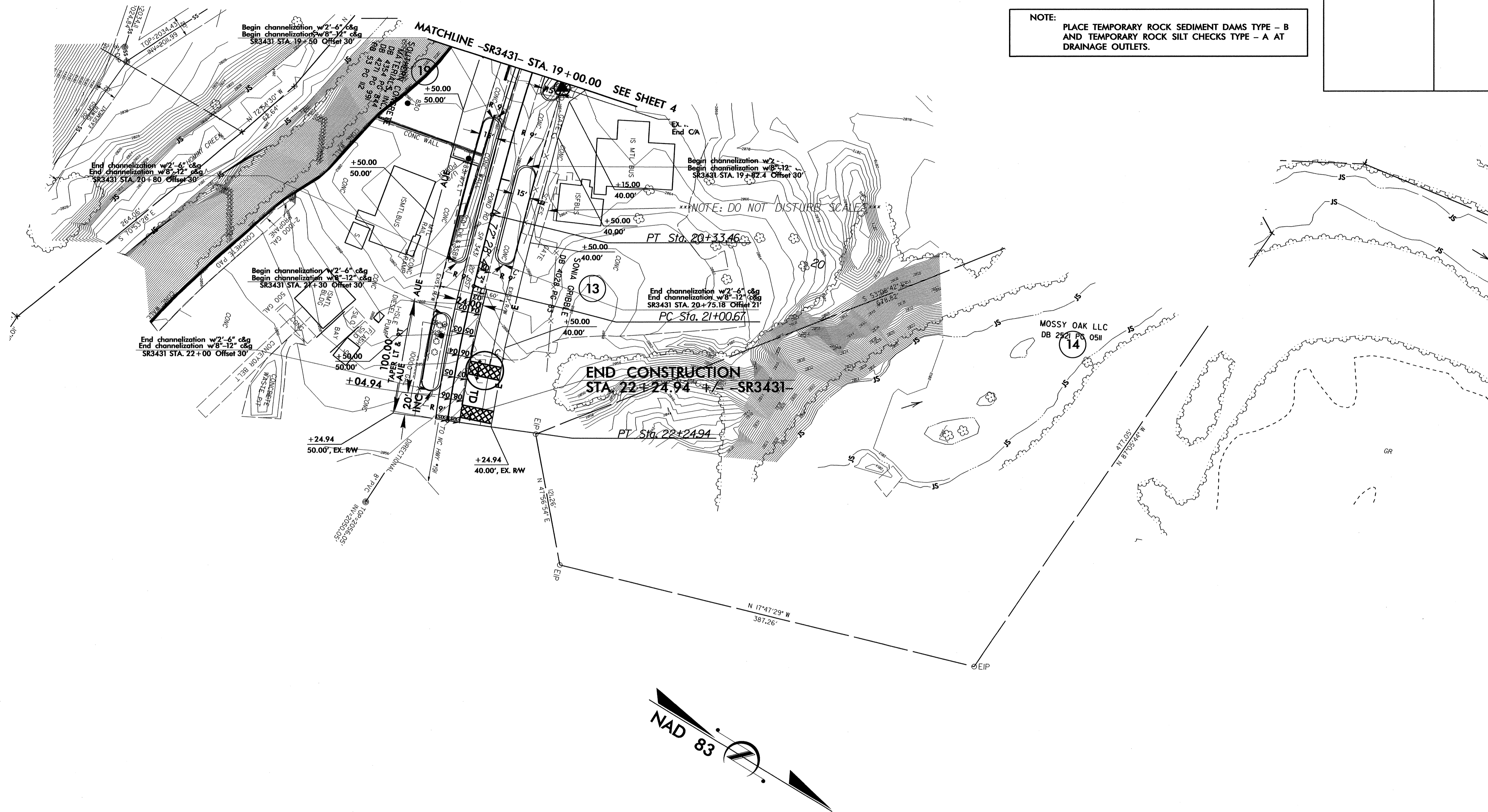
BEACON PARTNERS #8 LLC  
DB 1942 PG 293



PROJECT REFERENCE NO.	SHEET NO.
B-5178	EC-6/CONST.6
RW SHEET NO.	
ROADWAY DESIGN ENGINEER	HYDRAULICS ENGINEER

**CLEARING AND GRUBBING  
EROSION CONTROL FOR  
CONSTRUCTION SHEET 6**

**NOTE:**  
PLACE TEMPORARY ROCK SEDIMENT DAMS TYPE - B  
AND TEMPORARY ROCK SILT CHECKS TYPE - A AT  
DRAINAGE OUTLETS.

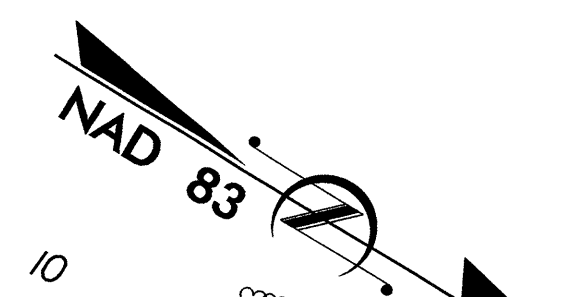




PROJECT REFERENCE NO.	SHEET NO.
B-5178	EC-7/CONST.4
RW SHEET NO.	
ROADWAY DESIGN ENGINEER	HYDRAULICS ENGINEER

NOTE:  
UTILIZE SPECIAL STILLING BASIN WHERE APPLICABLE.

**BEGIN TIP PROJECT B-5178**  
**STA. 28+00.00 -L-**



16 CHARLES W. MOF & WIFE EVON T. MC DB 2053 PG 774

Place Matting for Erosion Control on Slope as Work Allows.

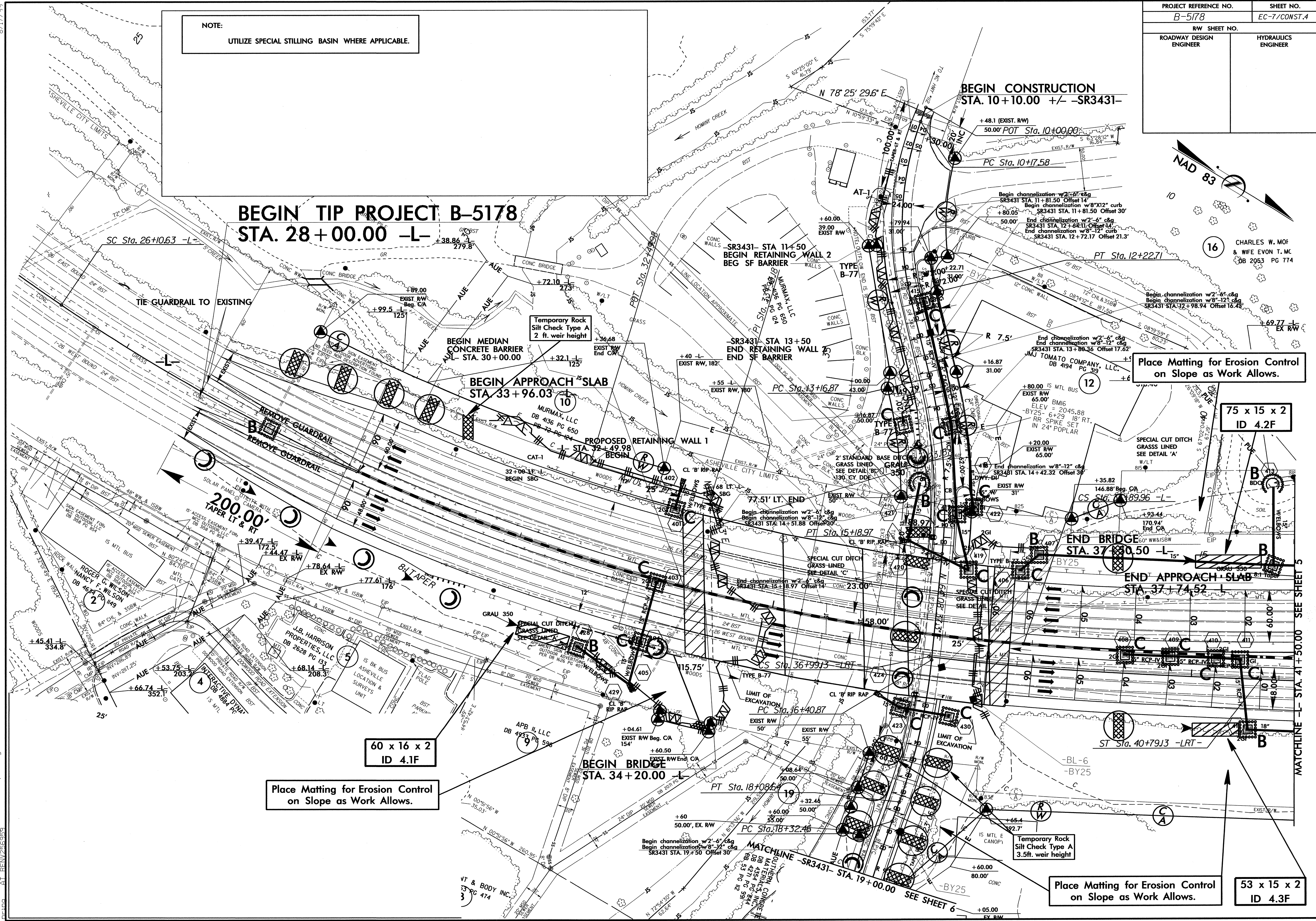
75 x 15 x 2 ID 4.2F

60 x 16 x 2 ID 4.1F

Place Matting for Erosion Control on Slope as Work Allows.

Place Matting for Erosion Control on Slope as Work Allows.

53 x 15 x 2 ID 4.3F



8/17/99  
30-APR-2012 08:12 D:\s\p\1\B-5178-EC-psh4.dgn  
D:\s\p\1\B-5178-EC-psh4.dgn



PROJECT REFERENCE NO.	SHEET NO.
B-5178	EC-8/CONST.5
RW SHEET NO.	
ROADWAY DESIGN ENGINEER	HYDRAULICS ENGINEER

Place Matting for Erosion Control on Slope as Work Allows.

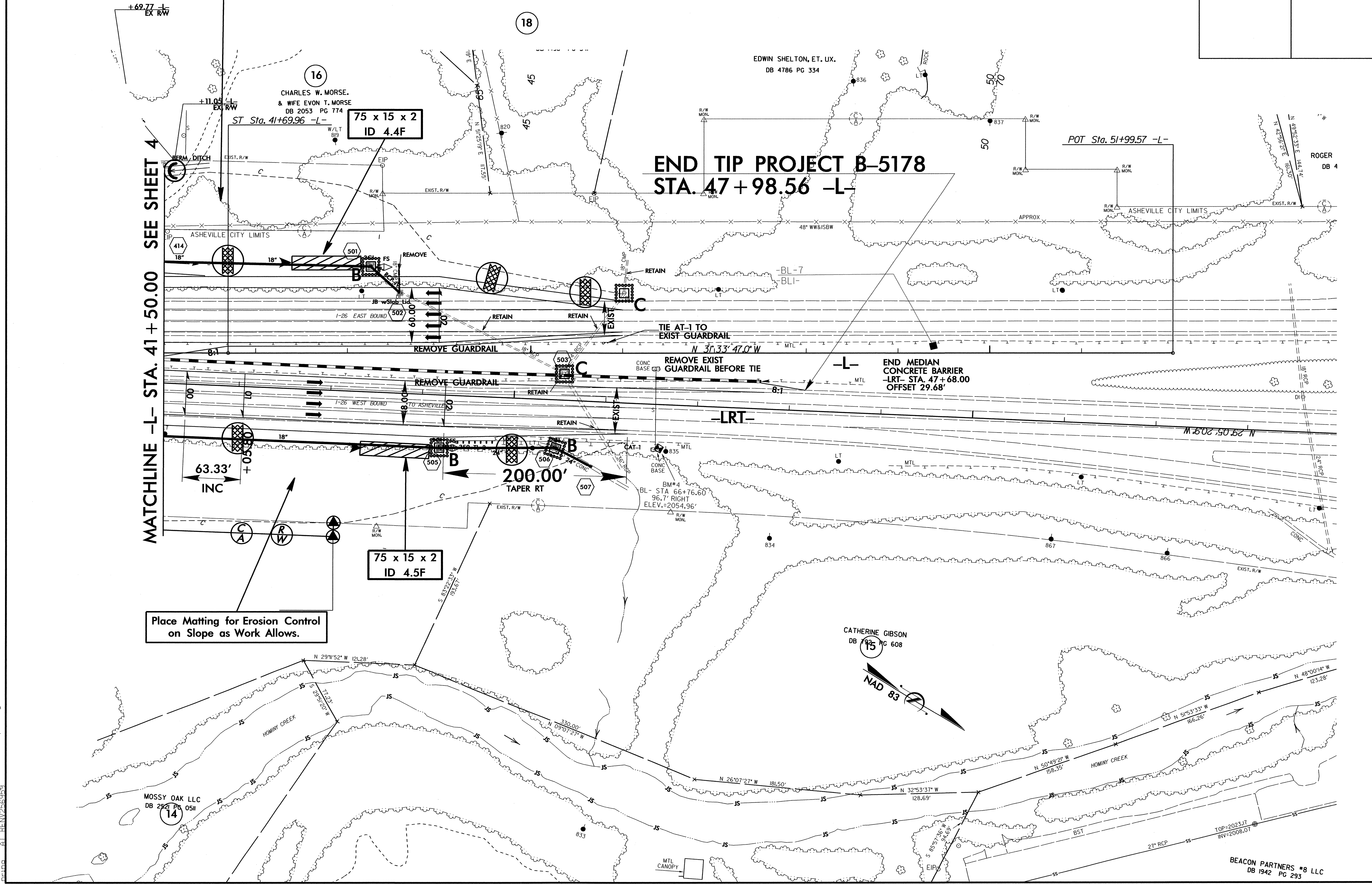
2'-6" c&g  
1"-12" c&g  
1"=16.43'

MATCHLINE -L- STA. 41+50.00 SEE SHEET 4

Place Matting for Erosion Control on Slope as Work Allows.

END TIP PROJECT B-5178  
STA. 47+98.56 -L-

8/17/99  
30-APR-2012 08:26 Design\B-5178-EC.pch5.dgn  
C:\Users\jgibson\AppData\Local\Temp\1\26368

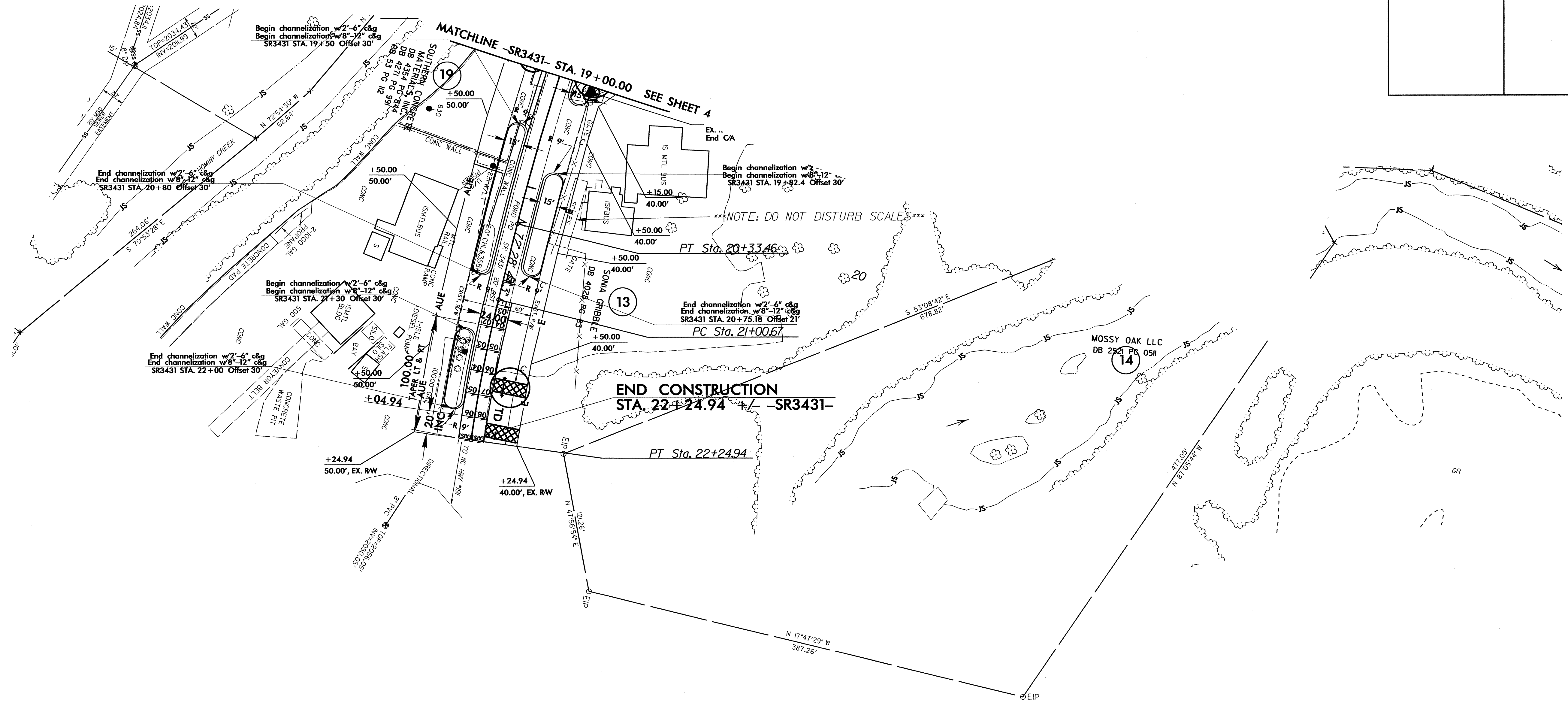


BEACON PARTNERS #8 LLC  
DB 1942 PG 293



8/17/99

PROJECT REFERENCE NO.		SHEET NO.	
B-5178		EC-9/CONST.6	
RW SHEET NO.			
ROADWAY DESIGN ENGINEER		HYDRAULICS ENGINEER	



70 APR 2012 08:31  
 C:\p\w\w\design\B-5178\_EC\_psh6.dgn  
 AT:REV:26353