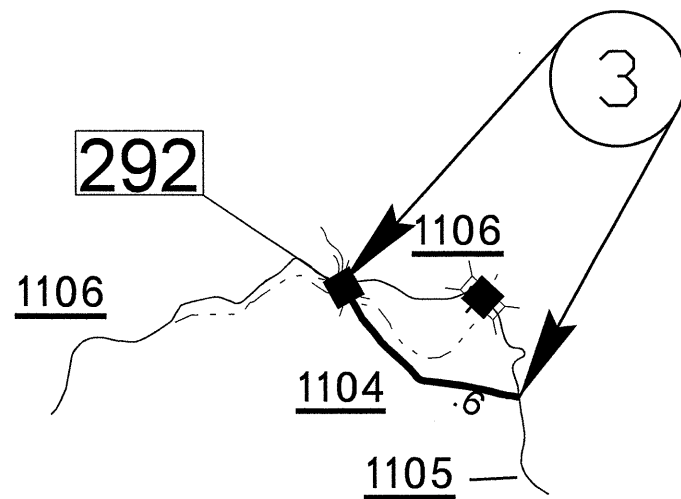
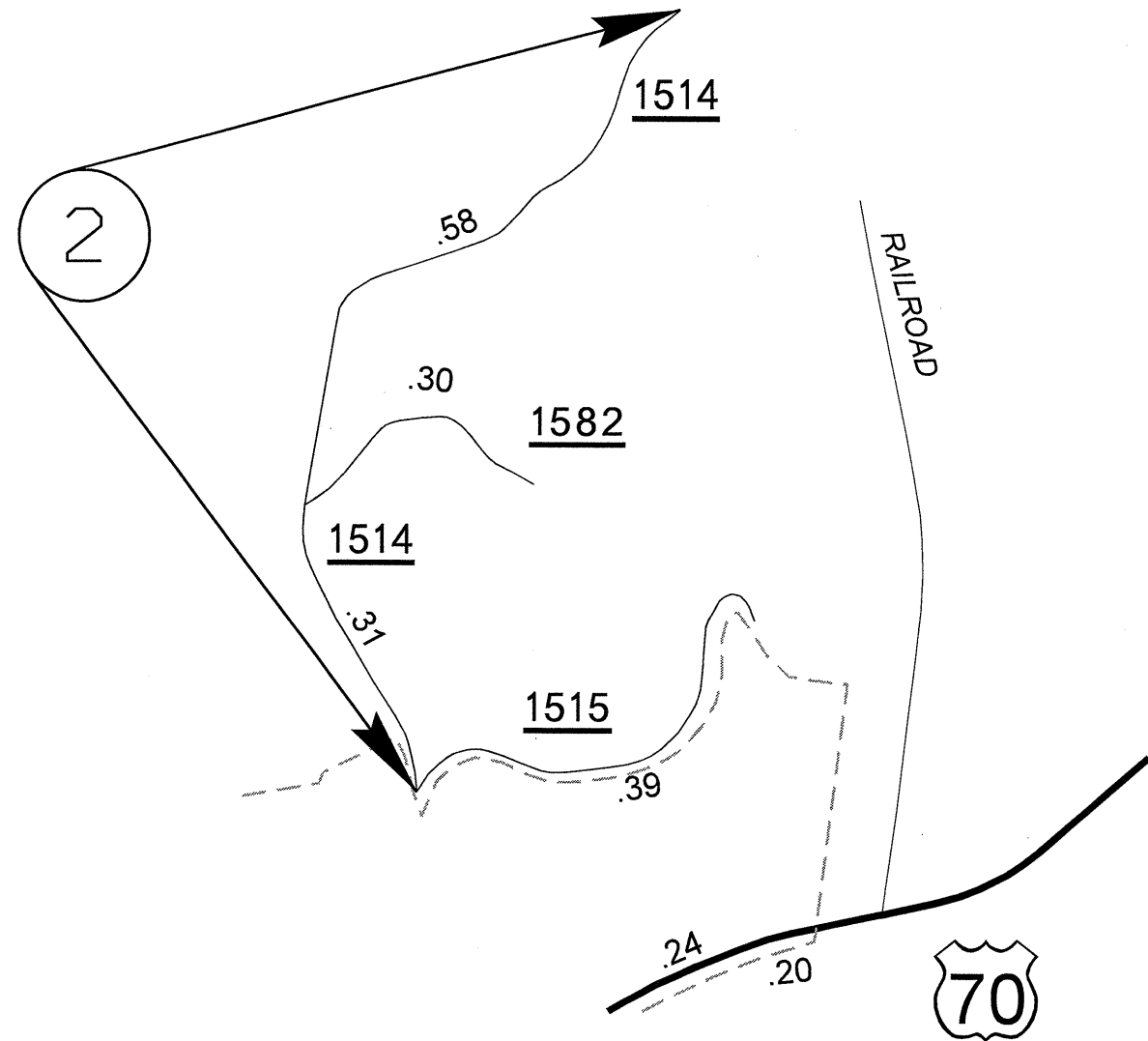
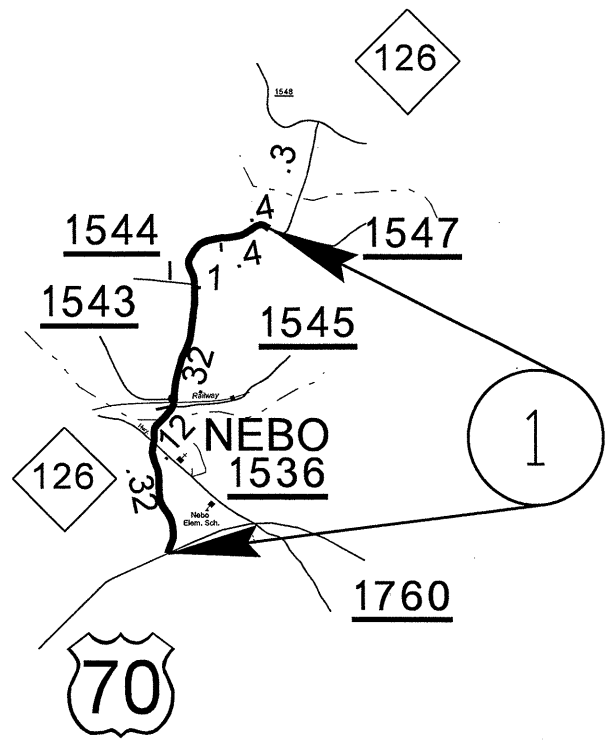
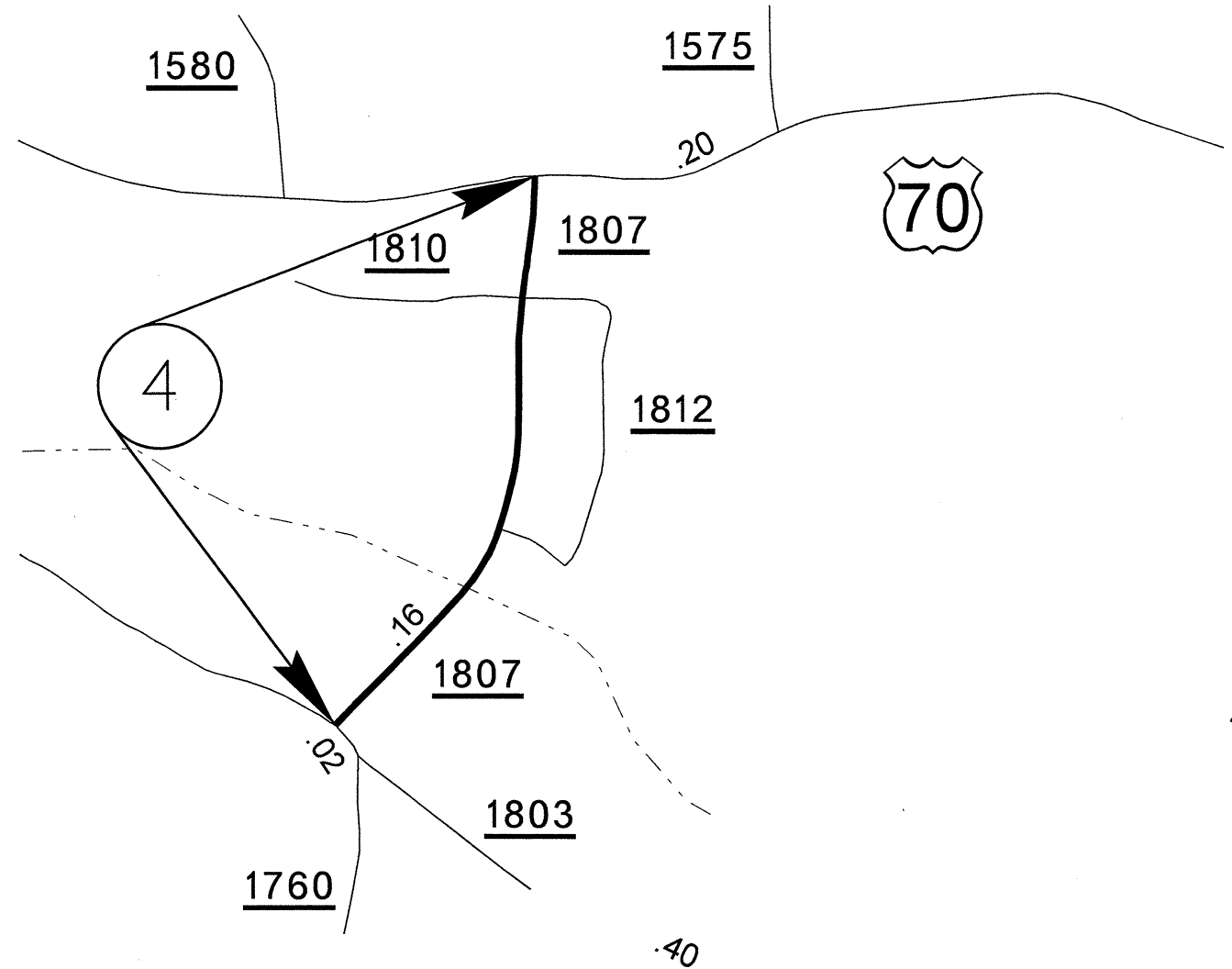


PROJECT NO.	SHEET NO.	TOTAL SHEETS
13CR.10591.II, 13CR.20591.I0 13CR.10611.II		

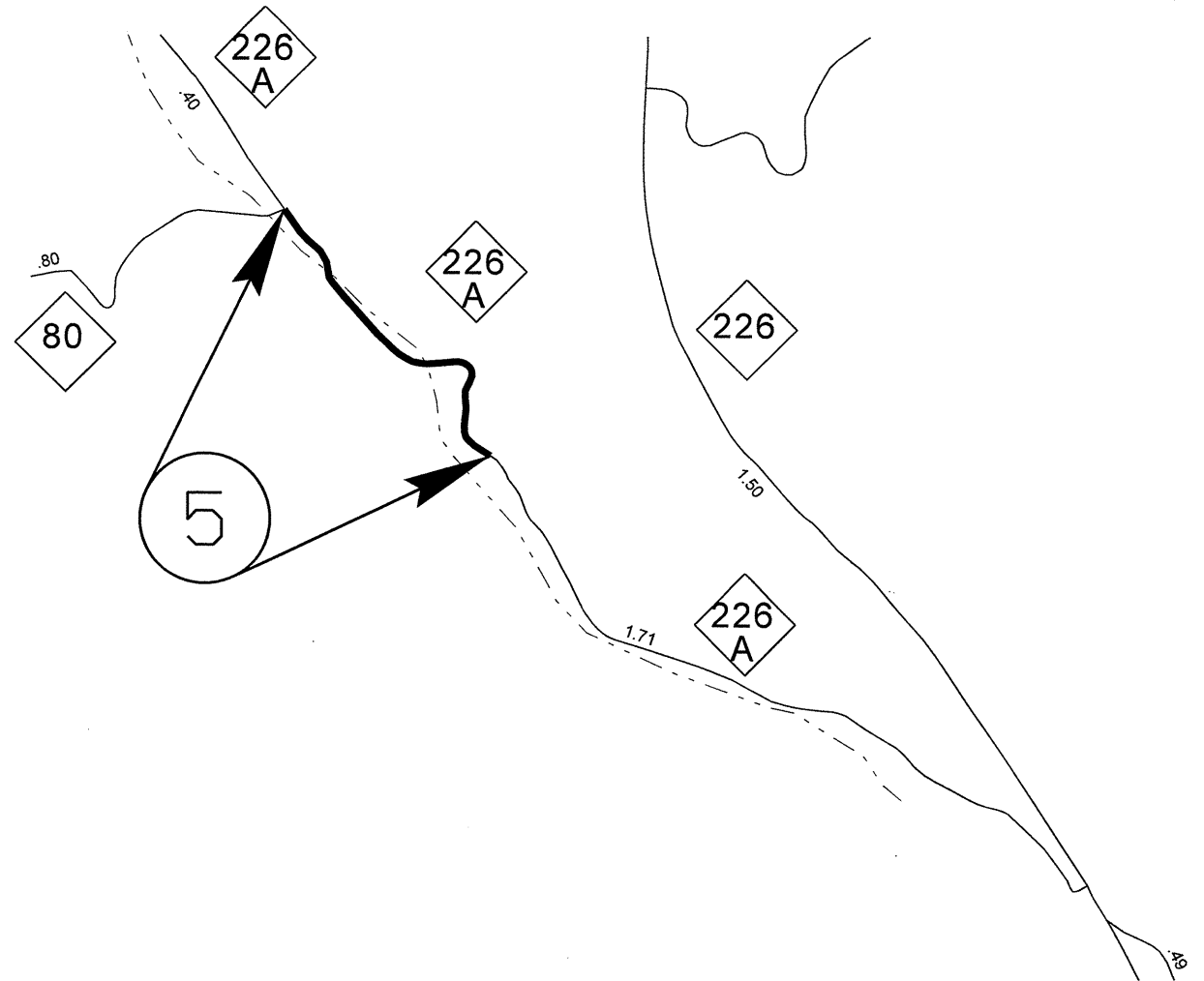


McDOWELL COUNTY

PROJECT NO.	SHEET NO.	TOTAL SHEETS
13CR.10591.II, 13CR.20591.I0 13CR.10611.II	2	



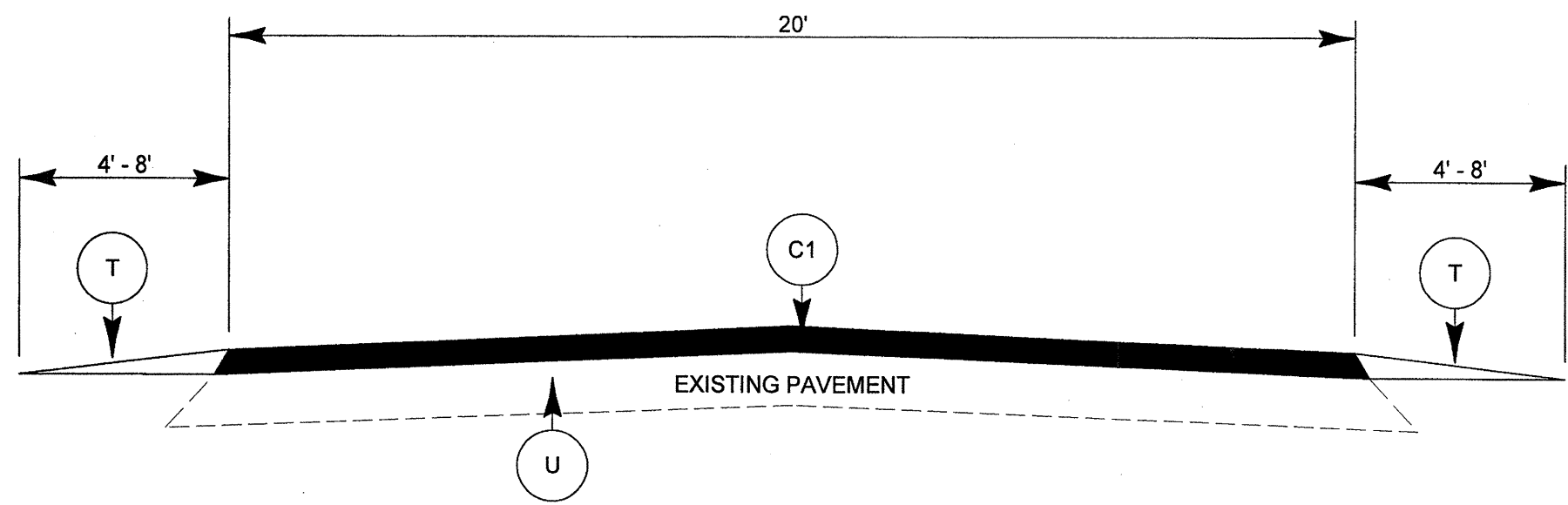
McDOWELL COUNTY



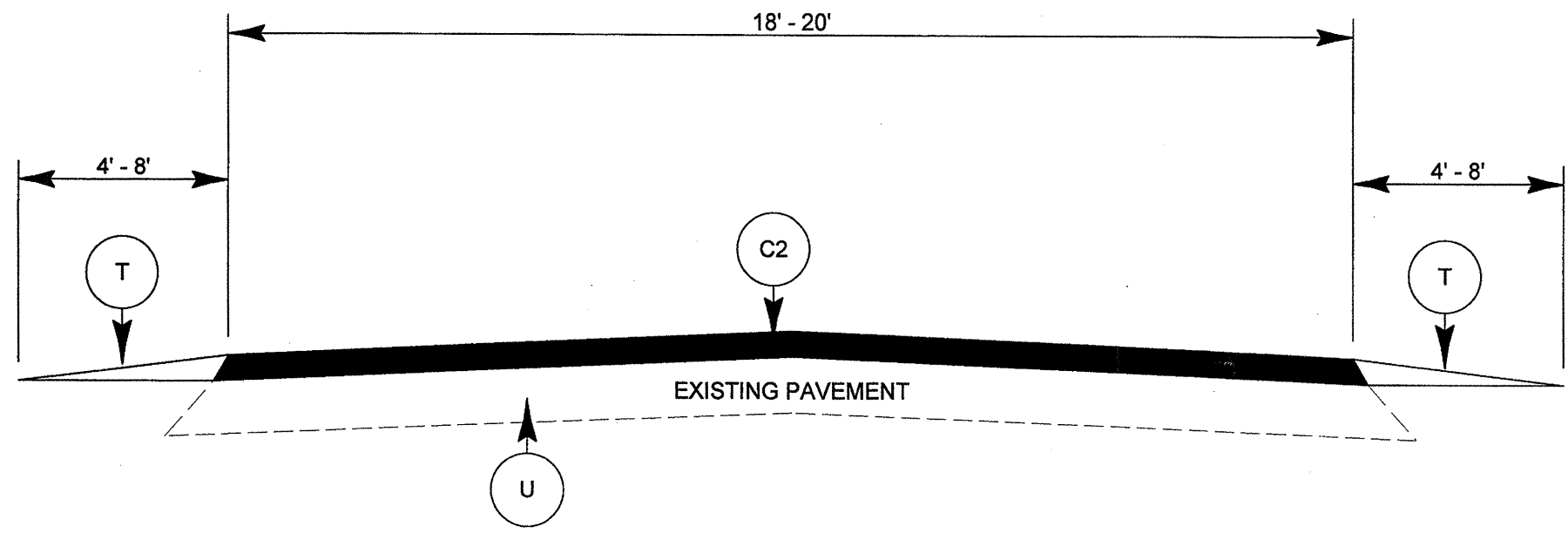
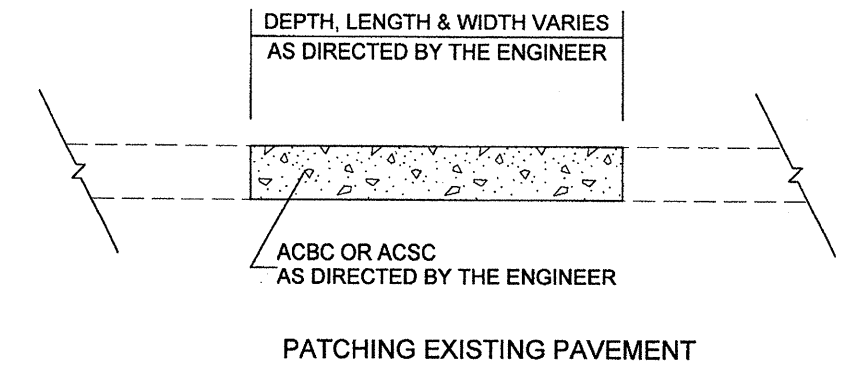
MITCHELL COUNTY



PROJECT NO.	SHEET NO.	TOTAL SHEETS
13CR.10591.11, 13CR.20591.10, 13CR.10611.11,	3	



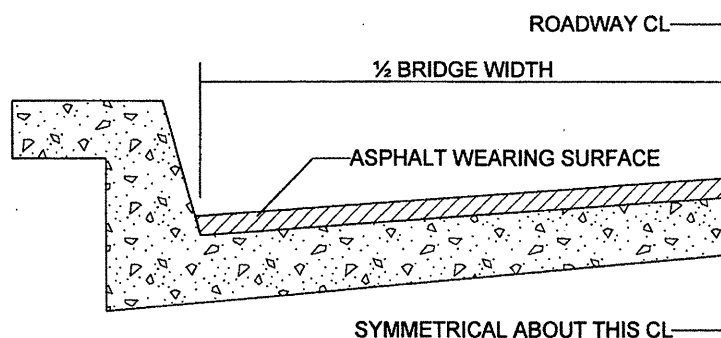
TYPICAL SECTION NO. 1



TYPICAL SECTION NO. 2

PAVEMENT SCHEDULE	
C1	PROP. APPROX. 1-1/2" ASPHALT CONCRETE SURFACE COURSE, TYPE S9.5B, AT AN AVERAGE RATE OF 168 LBS. PER SQ. YD
C2	PROP. APPROX. 1-1/2" ASPHALT CONCRETE SURFACE COURSE, TYPE SF9.5A, AT AN AVERAGE RATE OF 165 LBS. PER SQ. YD
T	SHOULDER RECONSTRUCTION
U	EXISTING PAVEMENT

PROJECT NO.	SHEET NO.	TOTAL SHEETS
13CR.10591.11, 13CR.20591.10, 13CR.10611.11,	4	



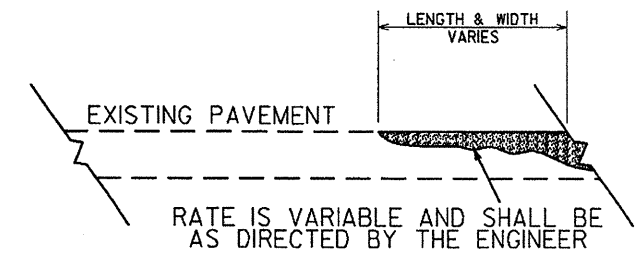
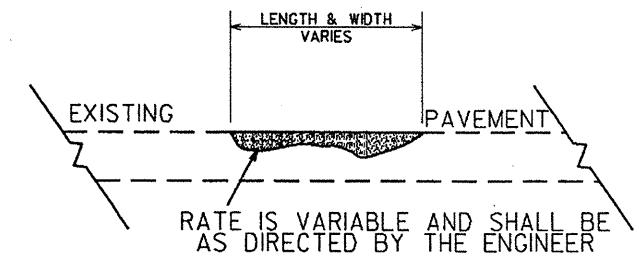
BRIDGE HALF TYPICAL SECTION

FOR BRIDGES WITH FLOOR DRAINS, CARE SHALL BE EXERCISED IN PLACING THE WEARING SURFACE AROUND FLOOR DRAINS SO AS NOT TO HINDER EFFECTIVE DRAINAGE. ALL DRAINS SHALL BE LEFT OPEN

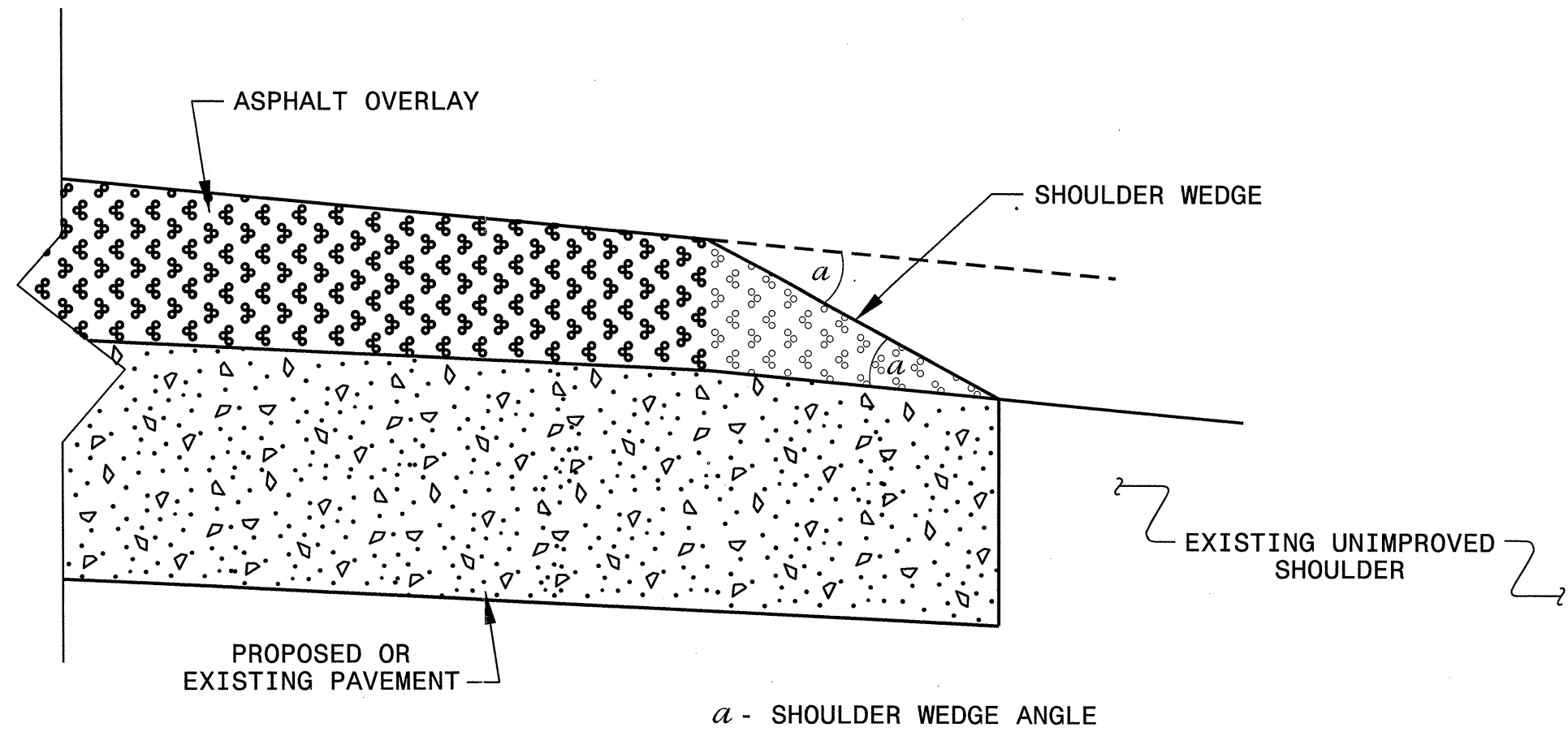
THE PROPOSED WEARING SURFACE SHALL VARY IN THICKNESS AS NECESSARY TO PROVIDE A SMOOTH RIDING SURFACE. THE MINIMUM THICKNESS SHOULD DEPEND ON PAVEMENT TYPE AS FOLLOWS: S4.75A 1/2", SF9.5A 1.0", S9.5X 1.5", S12.5X 2.0", ULTRATHIN HOT MIX ASPHALT-TYPE A 1/2", ULTRATHIN HOT MIX ASPHALT-TYPE B 5/8", ULTRATHIN HOT MIX ASPHALT-TYPE C 1/2". THE MAXIMUM THICKNESS SHOULD DEPEND ON PAVEMENT TYPE AS FOLLOWS: S4.75A 1.0", SF9.5A 1.5", S9.5X 2.0", S12.5X 2.0", ULTRATHIN HOT MIX ASPHALT-TYPE A 1/2", ULTRATHIN HOT MIX ASPHALT-TYPE B 5/8", ULTRATHIN HOT MIX ASPHALT-TYPE C 1/2".

NOTES

ALL UNPAVED ROADS TO BE RESURFACED 50' FROM EDGE OF PAVEMENT OF MAIN PROJECT.
 ALL PAVED S.R. ROADS TO BE RESURFACED TO THE ENDS OF THE RADII, OR AS DIRECTED BY THE ENGINEER.
 EDGES, PAVEMENT WIDENING, INTERSECTIONS AND BRIDGE FLARES ARE INCLUDED IN THE TABLE OF QUANTITIES.
 SHOULDERS AND DITCHES ARE TO BE CONSTRUCTED BY OTHERS UNLESS OTHERWISE INDICATED.
 BRIDGES ARE TO BE RESURFACED AT LOCATIONS AND TO DEPTH AS DIRECTED BY THE ENGINEER.



DETAIL SHOWING METHOD OF WEDGING



SHOULDER WEDGE DETAIL

04-OCT-2011 14:22
 S:\Contract\2011\1302\10591\stand\shoulderwedgedetail.dgn
 \$\$\$USERNAME\$\$\$

CONTRACT STANDARDS AND DEVELOPMENT UNIT			
Office 919-707-6950		FAX 919-250-4119	
SHOULDER WEDGE DETAIL			
ORIGINAL BY:	T. SPELL	DATE:	7-19-11
MODIFIED BY:		DATE:	
CHECKED BY:		DATE:	
FILE SPEC.:	s:\usr\details\stand\shoulderwedgedetail.dgn		

PROJECT NO.	SHEET NO.	TOTAL NO.
13CR.10591.11, 13CR.20591.10 13CR.10611.11,	6	

SUMMARY OF QUANTITIES

PROJECT NO	COUNTY	MAP NO	ROUTE	DESCRIPTION	TYP	FINAL SURFACE TESTING REQUIRED	LENGTH MI	WIDTH FT	INCIDENTAL STONE BASE TON	SHOULDER RECONSTRUCTION SMI	ASPHALT CONC SURFACE COURSE, TYPE S9.5B TON	ASPHALT CONC SURFACE COURSE, TYPE SF9.5A TON	ASPHALT BINDER FOR PLANT MIX TON	PATCHING EXISTING PAVEMENT TON	ADJUSTMENT OF METER BOXES OR VALVE BOXES EA	
13CR.10591.11	McDowell	1	NC 126	FROM US 70 MP 0 TO 0.20 MILES WEST OF SR 1547 MP 0.97	1	NO	0.97	20	48.50	1.94	1,200		72	475		
TOTAL FOR PROJ NO. 13CR.10591.11							0.97		48.50	1.94	1,200		72	475		
13CR.20591.10	McDowell	2	SR 1514	FROM SR 1515 MP 0 TO EOM MP 0.89	2	NO	0.87	18	43.50	1.74		840	56	310		
		3	SR 1104	FROM SR 1105 MP 0.32 TO SR 1106 MP 0.95	2	NO	0.63	18	31.50	1.26		608	41	380		
		4	SR 1807	FROM SR 1760 MP 0 TO US 70 MP 0.47	2	NO	0.47	20	23.50	0.94		504	34	220	4	
TOTAL FOR PROJ NO. 13CR.20591.10							1.97		98.50	3.94		1,952	131	910	4	
13CR.10611.11	Mitchell	5	NC 226A	FROM NEW PAVEMENT MP 1.14 TO NC 80 MP 1.66	1	NO	0.52	20	26.00	1.04	630		38	60		
TOTAL FOR PROJ NO. 13CR.10611.11							0.52		26.00	1.04	630		38	60		
GRAND TOTAL								3.46		173.00	6.92	1,830	1,952	241	1,445	4

THERMOPLASTIC AND PAINT QUANTITIES

PROJECT NO	COUNTY	MAP NO	ROUTE	DESCRIPTION	LENGTH	WIDTH	4685000000-E	4686000000-E	4705000000-E	4710000000-E	4721000000-E	4810000000-E		4835000000-E	4905000000-N
							4" X 90 M WHITE THERMO LF	4" X 120 M YELLOW THERMO LF	16" X 120 M WHITE THERMO LF	24" X 120 M WHITE THERMO LF	THERMOPLASTIC PAVEMENT MARKING CHARACTER (120 MILS, RXR) EA	PAINT PAVEMENT MARKING LINES (4") WHITE LF	PAINT PAVEMENT MARKING LINES (4") YELLOW LF	PAINT PAVEMENT MARKING LINES (24") WHITE LF	SNOWPLOWABLE PAVEMENT MARKERS EA
13CR.10591.11	McDowell	1	NC 126	FROM US 70 MP 0 TO 0.20 MILES WEST OF SR 1547 MP 0.97	0.97	20	10,243	10,243	100	70	4				128
TOTAL FOR PROJ NO. 13CR.10591.11					0.97		10,243	10,243	100	70	4				128
13CR.20591.10	McDowell	2	SR 1514	FROM SR 1515 MP 0 TO EOM MP 0.89	0.87	18						18,374	18,374	10	
		3	SR 1104	FROM SR 1105 MP 0.32 TO SR 1106 MP 0.95	0.63	18						13,306	13,306		
		4	SR 1807	FROM SR 1760 MP 0 TO US 70 MP 0.47	0.47	20						9,926	9,926		
TOTAL FOR PROJ NO. 13CR.20591.10					1.97							41,606	41,606	10	
												83,212			
13CR.10611.11	Mitchell	5	NC 226A	FROM NEW PAVEMENT MP 1.14 TO NC 80 MP 1.66	0.52	20	5,491	5,491							69
TOTAL FOR PROJ NO. 13CR.10611.11					0.52		5,491	5,491							69
GRAND TOTAL					3.46		15,734	15,734	100	70	4	41,606	41,606	10	197
												83,212			