

09/08/09

29-MAR-2012 07:41 S:\Contracts\Resurfacing Projects\Division 12\I-5503\I-5503 To Raleigh\I-5503_MAP.dgn \$\$\$USERNAME\$\$\$

TIP PROJECT: I-5503

CONTRACT: C203010

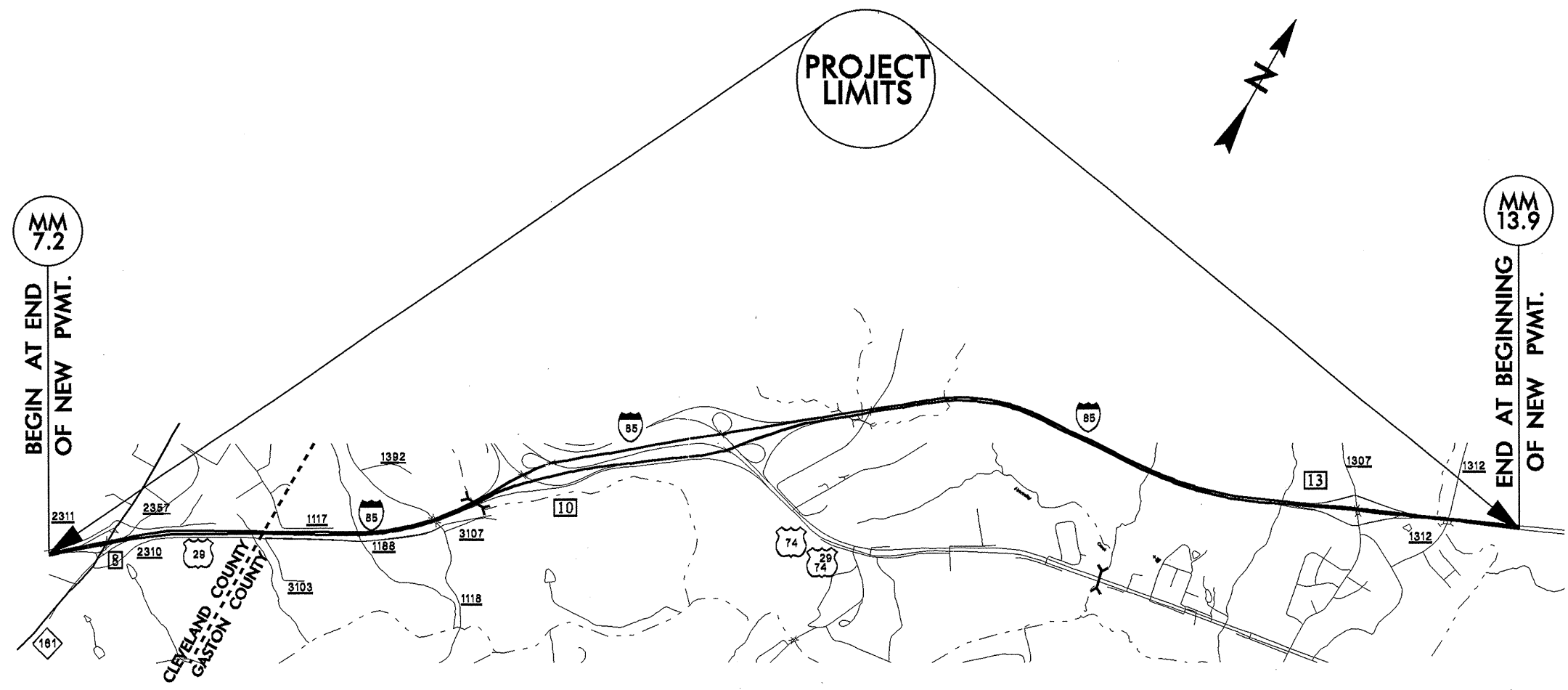
STATE OF NORTH CAROLINA
DIVISION OF HIGHWAYS

CLEVELAND & GASTON COUNTIES

LOCATION: I-85 FROM MILE MARKER 7.2 IN CLEVELAND COUNTY
TO MILE MARKER 13.9 IN GASTON COUNTY

TYPE OF WORK: MILLING, PAVING, AND PAVEMENT MARKINGS

STATE	STATE PROJECT REFERENCE NO.	SHEET NO.	TOTAL SHEETS
N.C.	I-5503	1	
STATE PROJ. NO.	F.A. PROJ. NO.	DESCRIPTION	
45544.1.1	IMS-0851(118)B	PE	
45544.3.1	IMS-0851(118)B	CONST.	



PROJECT LENGTH

LENGTH OF ROADWAY PROJECT I-5503 = 6.7 MI

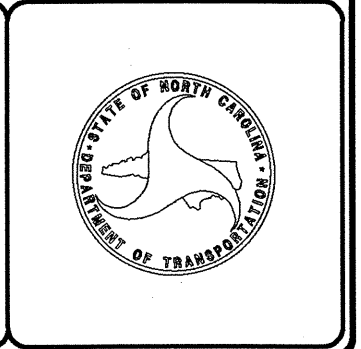
Prepared In the Office of:
DIVISION OF HIGHWAYS
1710 East Marion St., Shelby NC, 28152

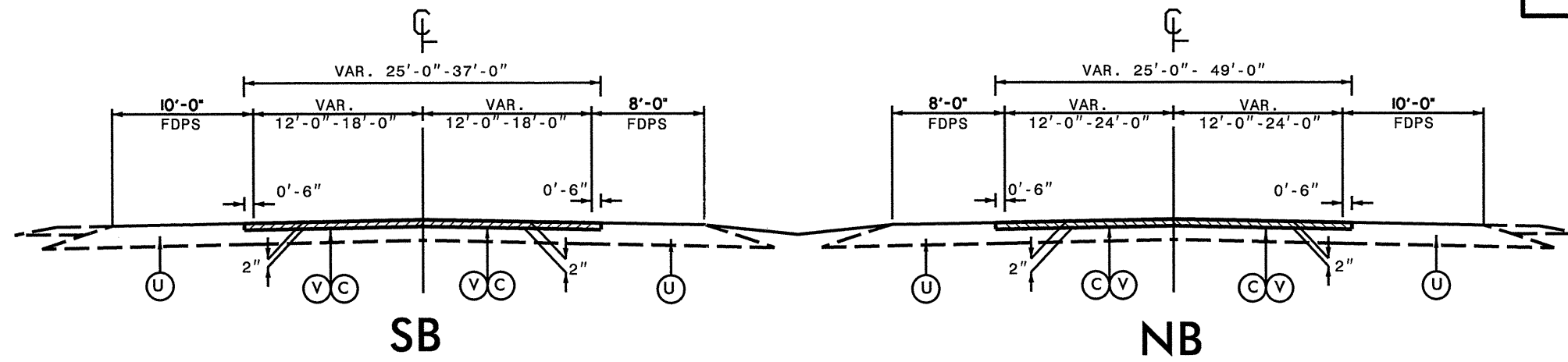
2012 STANDARD SPECIFICATIONS

LETTING DATE:
May 15, 2012

M.E. Stafford, PE
PROJECT ENGINEER

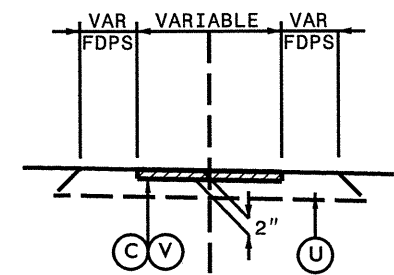
R.E. Humphries, PLS
PROJECT DESIGN ENGINEER





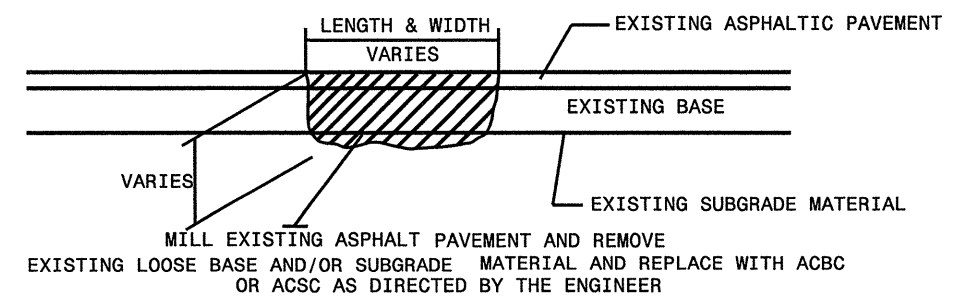
TYPICAL SECTION NO. 1

USE TYPICAL SECTION NO. 1 FROM MM 7.2 TO MM 13.9
I-85 NORTHBOUND AND SOUTHBOUND LANES



TYPICAL SECTION NO. 2

USE TYPICAL SECTION NO. 2 FOR RAMPS,
LOOPS, ACCELERATION AND DECELERATION LANES
AT EXIT 10A, 10B & 13



MILL EXISTING ASPHALT PAVEMENT AND REMOVE
EXISTING LOOSE BASE AND/OR SUBGRADE MATERIAL AND REPLACE WITH ACBC
OR ACSC AS DIRECTED BY THE ENGINEER

PATCHING EXISTING PAVEMENT

****NOTE:** DO NOT MILL OR PAVE RAMPS OR TAPERS AT EXIT 8 (I-85 / NC 161)

MILL AND PAVE PER TYPICAL #2 UP TO END OF GORE
(TRAVELWAY ONLY) ON RAMPS AND LOOPS AT EXITS 10A & 10B

MILL AND PAVE TO END OF RAMP AT INTERSECTION WITH
SR 1307 (EDGEWOOD RD.) AT EXIT 13

PAVEMENT SCHEDULE	
C	PROP. APPROX. 2" ASPHALT CONCRETE SURFACE COURSE, TYPE S9.5D, AT AN AVERAGE RATE OF 224 LBS. PER SQ. YD.
U	EXISTING PAVEMENT.
V	MILLING ASPHALT PAVEMENT 2" DEPTH

PROJECT NO.	SHEET NO.	TOTAL NO.
I-5503	3	3

SUMMARY OF QUANTITIES

PROJECT NO	COUNTY	MAP NO	ROUTE	DESCRIPTION	TYP NO	FINAL SURFACE TESTING REQUIRED	LENGTH MI	WIDTH FT	2" MILLING SY	SURFACE COURSE, S9.5D TONS	POLYMER MODIFIED ASPHALT BINDER FOR PLANT MIX TONS	PATCHING EXISTING PAVEMENT TONS	PORTABLE LIGHTING LS
I-5503	Cleveland/Gaston	1	I-85		1	NO	6.7	24-36	271,100	30,370	1,735	550	1.00
TOTAL FOR PROJ NO. I-5503							6.7		271,100	30,370	1,735	550	1.00
GRAND TOTAL							6.7		271,100	30,370	1,735	550	1.00

THERMOPLASTIC AND PAINT QUANTITIES

PROJECT NO	COUNTY	MAP NO	ROUTE	DESCRIPTION	LEN GTH	WIDTH	4399000000-E	4721000000-E	4725000000-E	4847100000-E		4847120000-E	4855000000-E	4905000000-N
							TEMPORARY TRAFFIC CONTROL	THERMO MSG ONLY 120 M	THERMO MERGE ARROW 90 M	6" WHITE POLYUREA (HRE)	6" YELLOW POLYUREA (HRE)	12" WHITE POLYUREA (HRE)	6" LINE REMOVAL	SNOW PLOWABLE MARKERS
							LS	EA	EA	LF	LF	LF	LF	EA
45544.3.1	Cleveland/Gaston	1	I-85		6.7	24-36	1	8	17	104,470	76,050	7,250	1,213	1,352
TOTAL FOR MAP NO. 1							6.7	8	17	104,470	76,050	7,250	1,213	1,352
TOTAL FOR PROJ NO. 45544.3.1							6.7	8	17	104,470	76,050	7,250	1,213	1,352
GRAND TOTAL							6.7	8	17	104,470	76,050	7,250	1,213	1,352