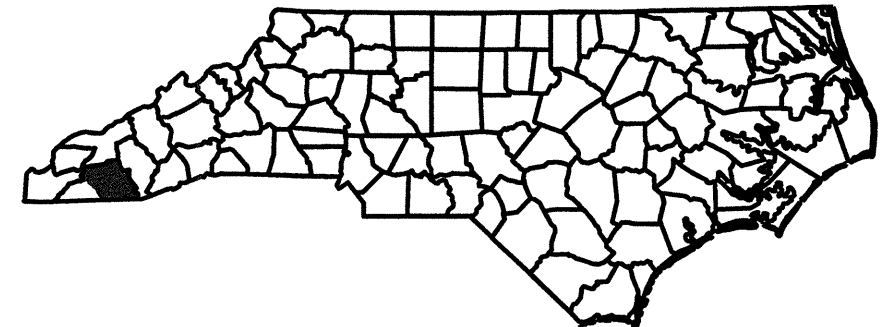
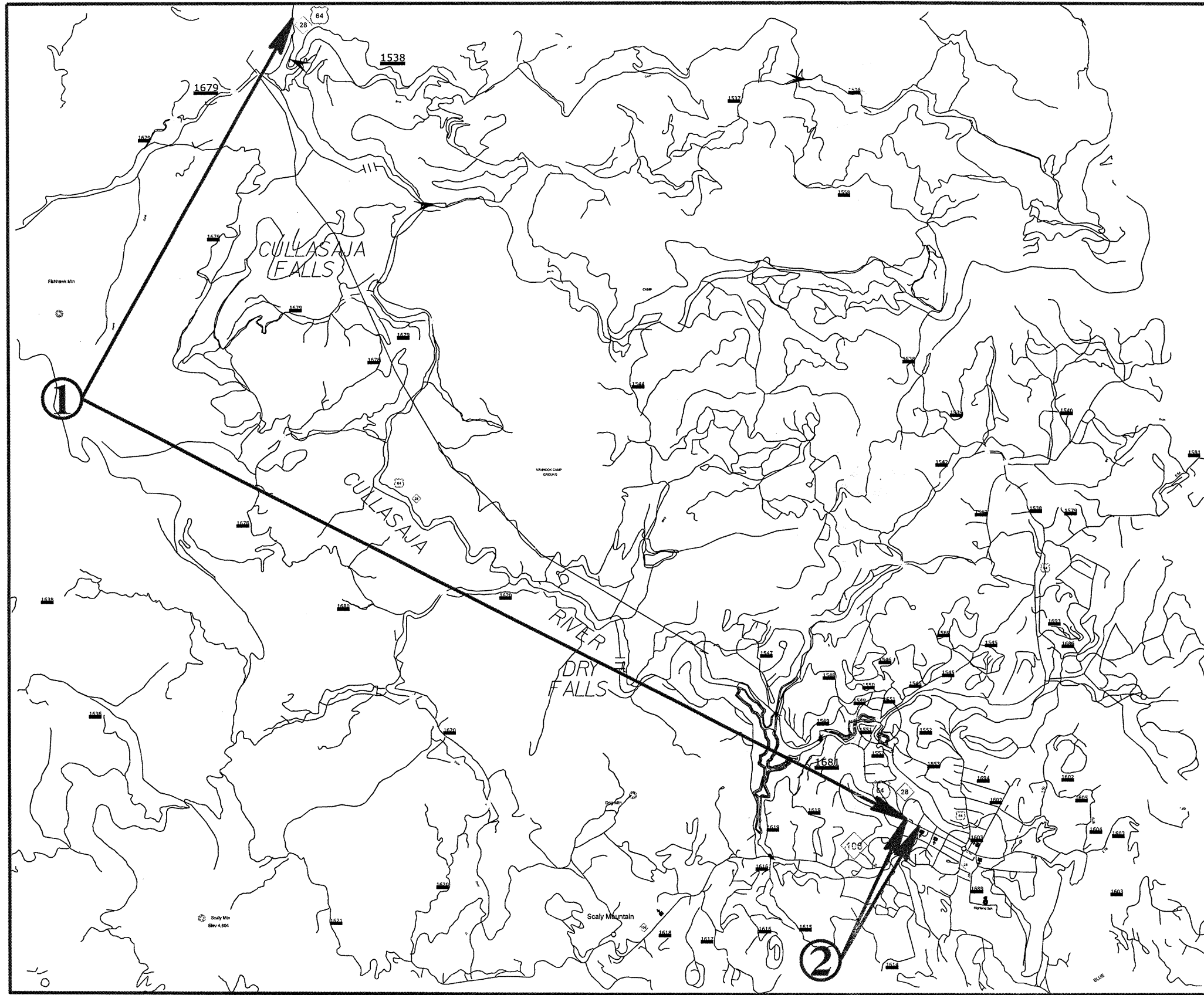


050191

MACON COUNTY

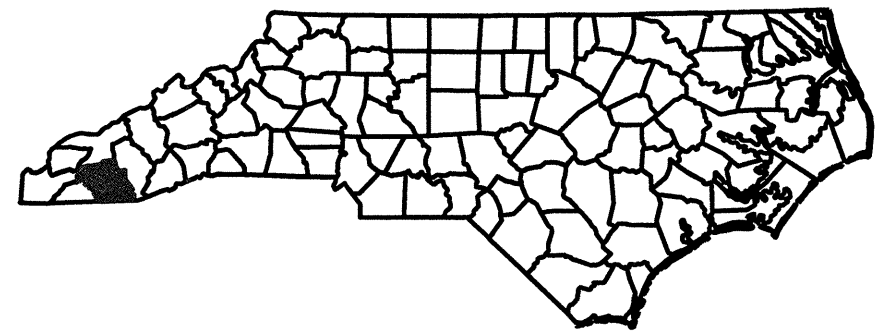
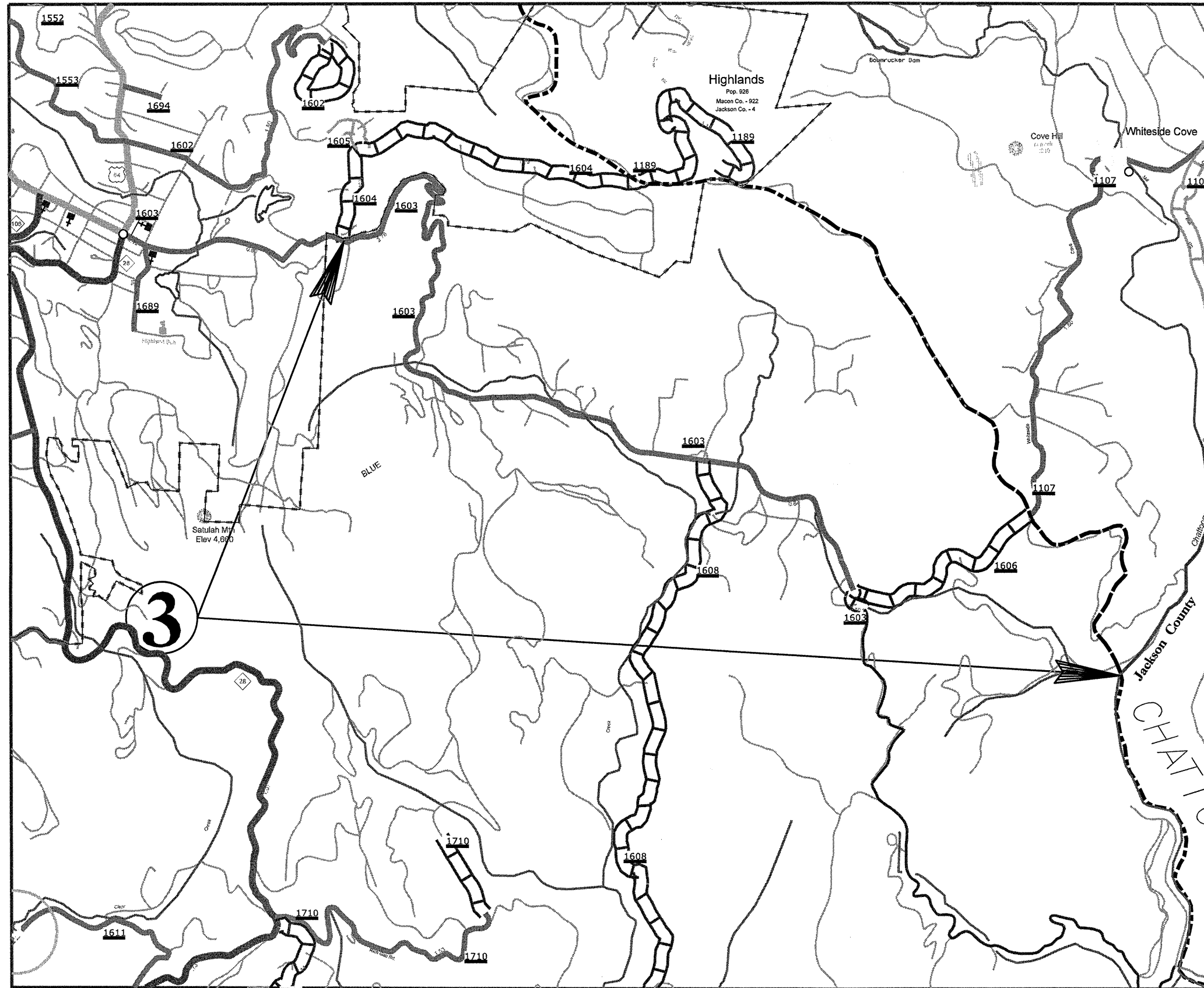
PROJECT REFERENCE NO.		SHEET NO.
14CR.10561.7		1 OF 7
STATE PROJECT	F.A. PROJECT NO.	DESCRIPTION
14CR.10561.7		
14CR.20561.8		



050197

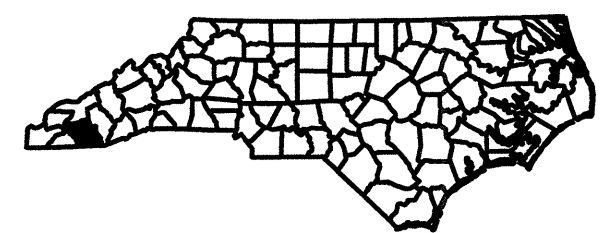
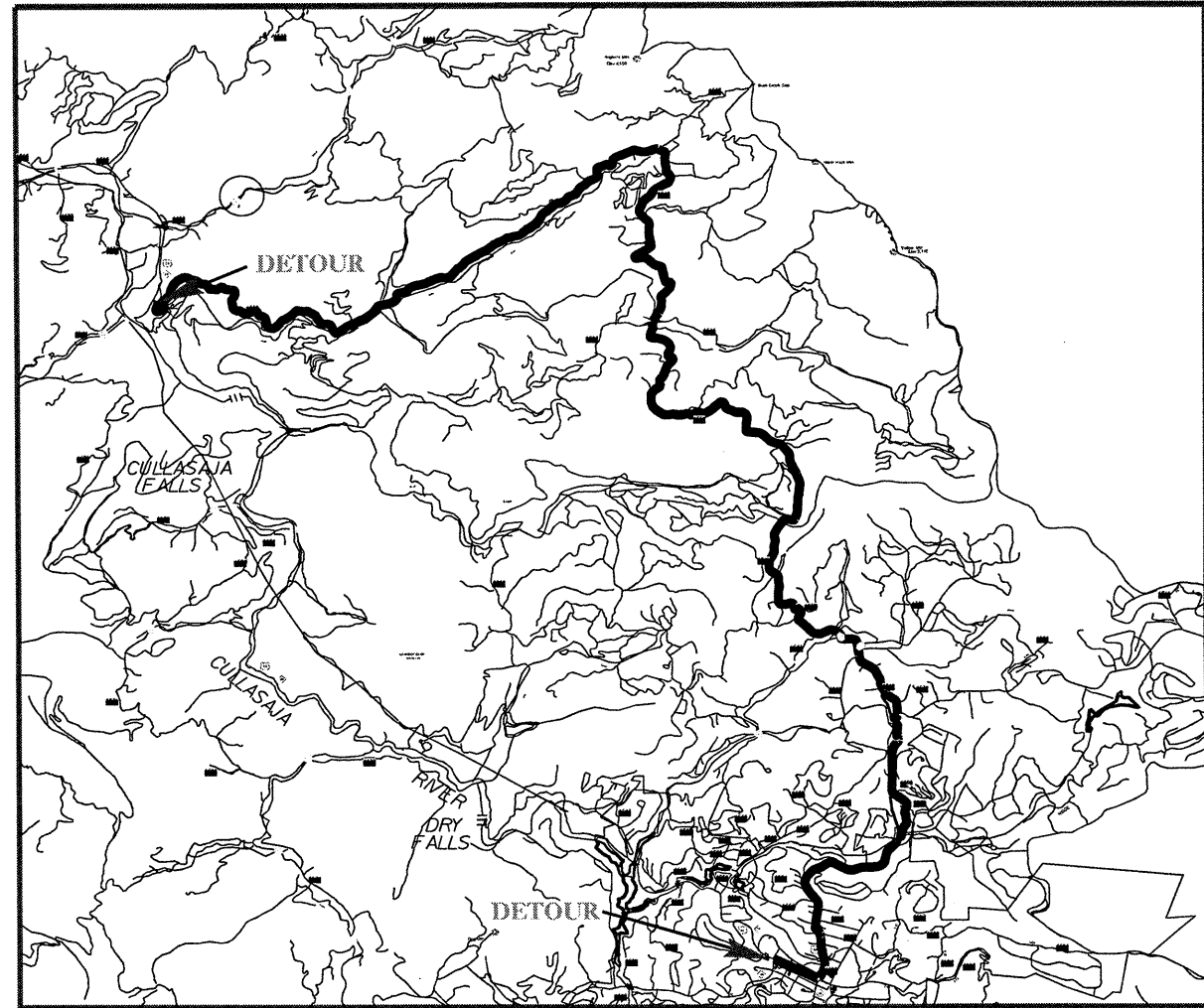
MACON COUNTY

PROJECT REFERENCE NO.		SHEET NO.	
14CR.10561.7		2 OF 7	
STATE PROJECT	F.A. PROJECT NO.	DESCRIPTION	
14CR.10561.7			
14CR.20561.8			



2012 US 64 DETOUR
MACON COUNTY

PROJECT REFERENCE NO.	SHEET NO.	
14CR20541.7	3 OF 7	
STATE PROJECT	F.A. PROJECT NO.	DESCRIPTION
14CR20541.7		
14CR20541.8		



050187

PROJECT REFERENCE NO.		SHEET NO.
14CR.10561.7		4 OF 7
STATE PROJECT	F.A. PROJECT NO.	DESCRIPTION
14CR.10561.7		
14CR.20561.8		

FINAL PAVEMENT SCHEDULE

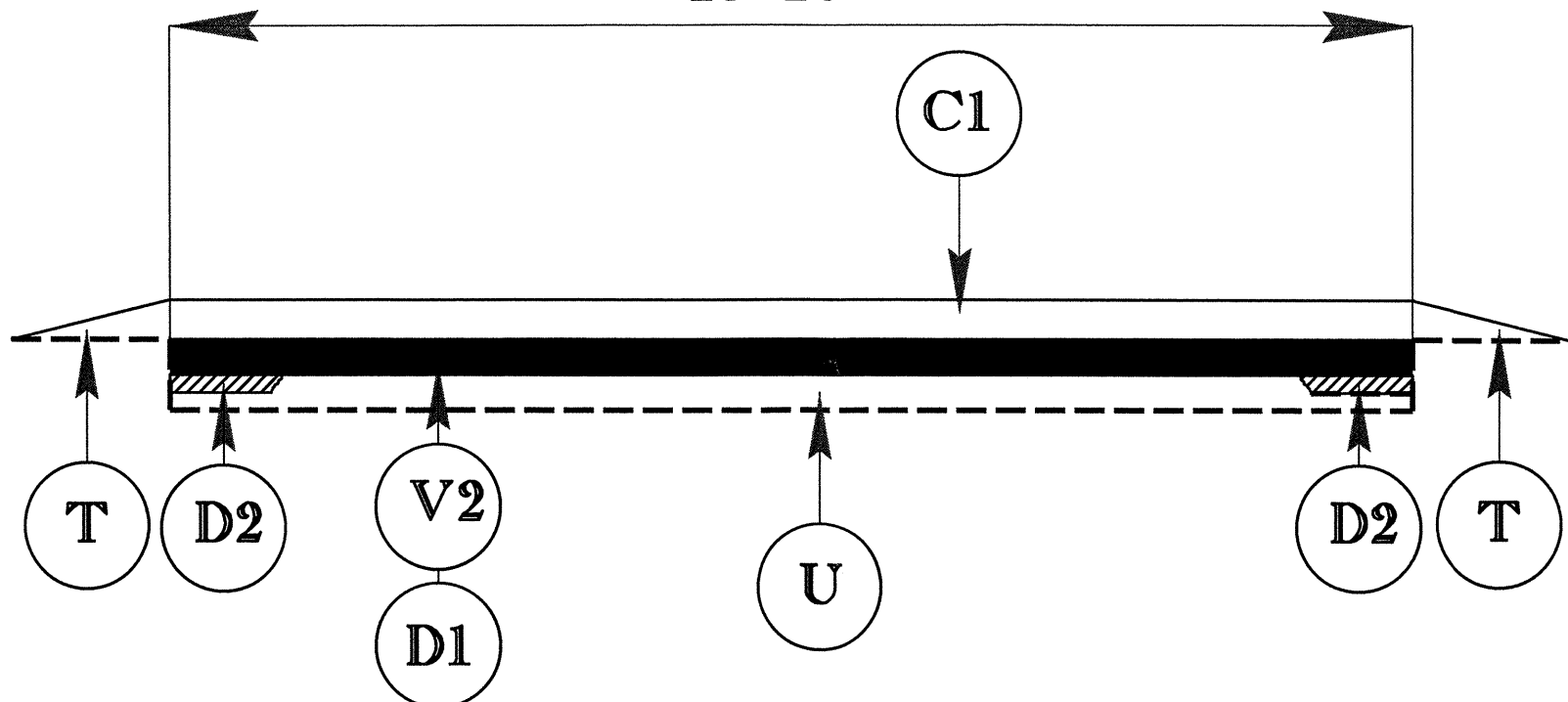
ITEM NO	DESCRIPTION
C1	ASPHALT CONCRETE SURFACE COURSE, TYPE S9.5B AT AN AVERAGE RATE OF 168 LBS. PER SQ. YD. (1 1/2")
D1	ASPHALT CONCRETE INTERMED. COURSE, TYPE I19.0B, AT AN AVERAGE RATE OF 456 LBS. PER SQ. YD. (4")
D2	VAR. DEPTH ASPHALT CONCRETE INTERMED. COURSE, TYPE I19.0B, AT AN AVERAGE RATE OF 114 LBS. PER SQ. YD. PER 1" DEPTH, AT LOCATION AND DEPTH AS DIRECTED BY THE PROJECT ENGINEER
V1	MILLING ASPHALT PAVEMENT 1 1/2" IN DEPTH AS DIRECTED BY PROJECT ENGINEER.
V2	MILLING ASPHALT PAVEMENT 4" IN DEPTH AS DIRECTED BY PROJECT ENGINEER.
T	SHOULDER RECONSTRUCTION AS DIRECTED BY PROJECT ENGINEER - SEE SPECIAL PROVISIONS
U	EXISTING PAVEMENT

Note: Leveling course SF9.5A required as directed by project engineer.

050197

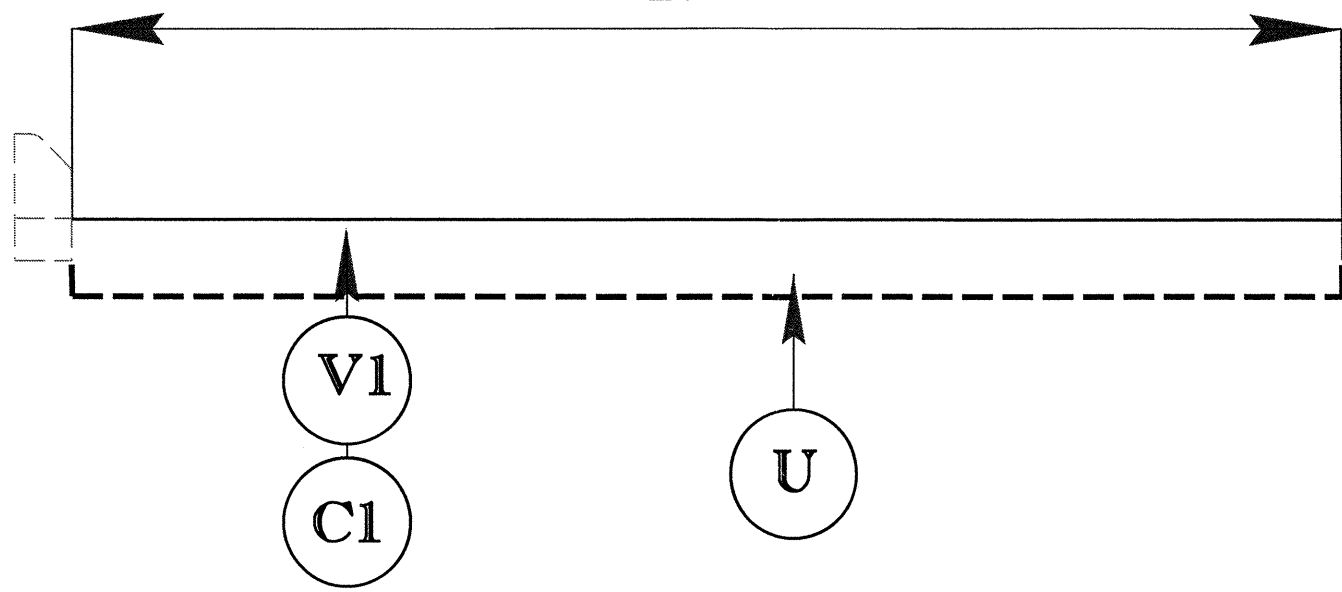
TYPICAL 1

18'-20'



TYPICAL 2

18'



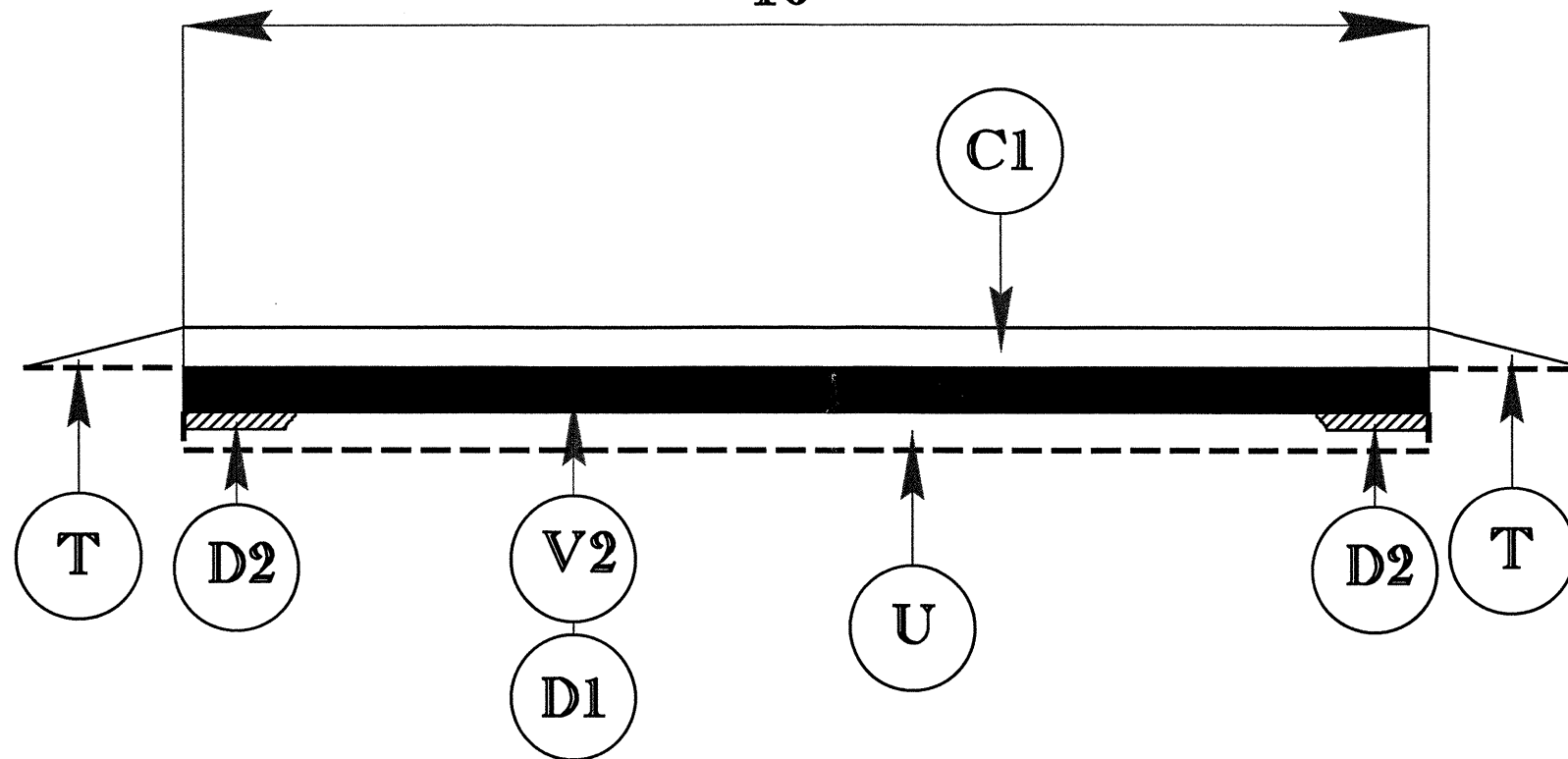
PROJECT REFERENCE NO.		SHEET NO.
14CR.10561.7		5 OF 7
STATE PROJECT	F.A. PROJECT NO.	DESCRIPTION
14CR.10561.7		
14CR.20561.8		

050197

PROJECT REFERENCE NO.		SHEET NO.
14CR.10561.7		6 OF 7
STATE PROJECT	F.A. PROJECT NO.	DESCRIPTION
14CR.10561.7		
14CR.20561.8		

TYPICAL 3

16'



Note: Leveling course SF9.5A required as directed by project engineer.

PROJECT NO.	SHEET NO.	TOTAL NO.
14CR.10561.7, 14CR.20561.8	7	7

SUMMARY OF QUANTITIES

PROJECT NO	COUNTY	MAP NO	ROUTE	DESCRIPTION	TYP NO	FINAL SURFACE TESTING REQUIRED	LENGTH MI	WIDTH FT	SHOULDER RECONSTRUCTION SMI	4" MILLING SY	1½" MILLING SY	INTERMEDIATE COURSE, I19.0B TONS	SURFACE COURSE, S9.5B TONS	ASPHALT CONC.LEVELING COURSE, TYPE SF9.5A TON	ASPHALT BINDER FOR PLANT MIX TONS
14CR.10561.7	Macon	1	US 64	FROM SR-1533 TO .22 MILES WEST OF INTERSECTION OF NC106	1	NO	10.39	20	18.20	33,010		8,855	11,026		1,087
		2	US 64	FROM .22 MILES WEST OF NC 106 TO NC 106	2	NO	0.21	18			2,323		201		12
TOTAL FOR PROJ NO. 14CR.10561.7							10.6		18.20	33,010	2,323	8,855	11,227		1,099
14CR.20561.8	Macon	3	SR-1603	FROM PVT CHG. AT SR-1604 TO JACKSON CO. LINE	3	NO	3.79	16	7.60	8,800		2,802	3,373	2,160	482
TOTAL FOR PROJ NO. 14CR.20561.8							3.79		7.60	8,800		2,802	3,373	2,160	482
GRAND TOTAL							14.39		25.80	41,810	2,323	11,657	14,600	2,160	1,581

THERMOPLASTIC AND PAINT QUANTITIES

PROJECT NO	COUNTY	MAP NO	ROUTE	DESCRIPTION	LENGTH	WIDTH	4400000000-E	4405000000-E	4410000000-E	4420000000-N	4445000000-E	4810000000-E			4835000000-E	4847000000-E		4710000000-E	4905000000-N	
							STATIONARY WORK ZONE SIGN SF	PORTABLE WORK ZONE SIGN SF	BARRICADE MOUNTED WORK ZONE SIGN SF	CHANGEABLE MESSAGE SIGN EA	TYPE III BARRICADE LF	4" YELLOW PAINT (TEMP) LF	4" WHITE PAINT LF	4" YELLOW PAINT LF	24" WHITE PAINT LF	4" WHITE POLYUREA (HRE) LF	4" YELLOW POLYUREA (HRE) LF	24" x 120 M WHITE THERMO LF	YELLOW & YELLOW SNOW PLOWABLE MARKERS EA	
14CR.10561.7	Macon	1	US 64	FROM SR-1533 TO .22 MILES WEST OF INTERSECTION OF NC106	10.4	20	4,896	96	48	3	96	111,936					110,439	110,484	160	754
		2	US 64	FROM .22 MILES WEST OF NC 106 TO NC 106	0.21	18											1,193	3,084		14
TOTAL FOR PROJ NO. 14CR.10561.7					10.6		4,896	96	48	3	96	111,936					111,632	113,568	160	768
												111,936					225,200		768	
14CR.20561.8	Macon	3	SR-1603	FROM PVT CHG. AT SR-1604 TO JACKSON CO. LINE	3.79	16							81,561	81,561	50					
TOTAL FOR PROJ NO. 14CR.20561.8					3.79								81,561	81,561	50					
													163,122							
GRAND TOTAL					14.39		4,896	96	48	3	96	111,936	81,561	81,561	50		111,632	113,568	160	768
													275,058				225,200		768	

