

See Sheet 1-A For Index of Sheets

STATE OF NORTH CAROLINA
DIVISION OF HIGHWAYS

T.I.P. NO.	SHEET NO.
B-4293	UO-1

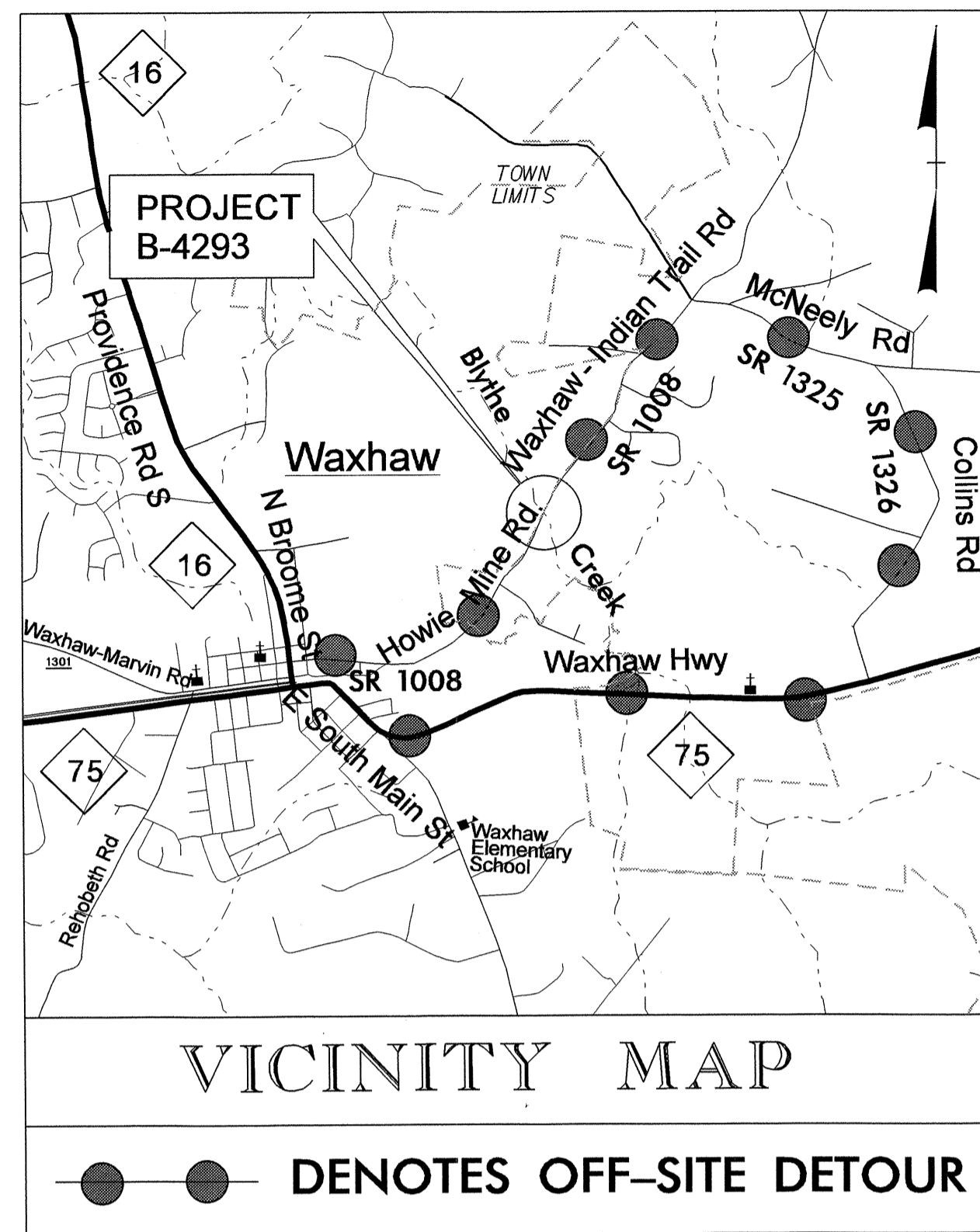
**UTILITIES BY OTHERS PLANS
UNION COUNTY**

**LOCATION: BRIDGE NO. 219 OVER BLYTHE CREEK AND APPROACHES
ON SR 1008 (WAXHAW-INDIAN TRAIL ROAD)**

TYPE OF WORK: TELEPHONE

UC-2 4

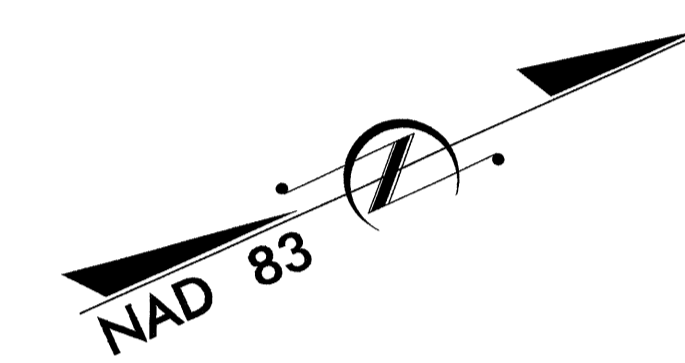
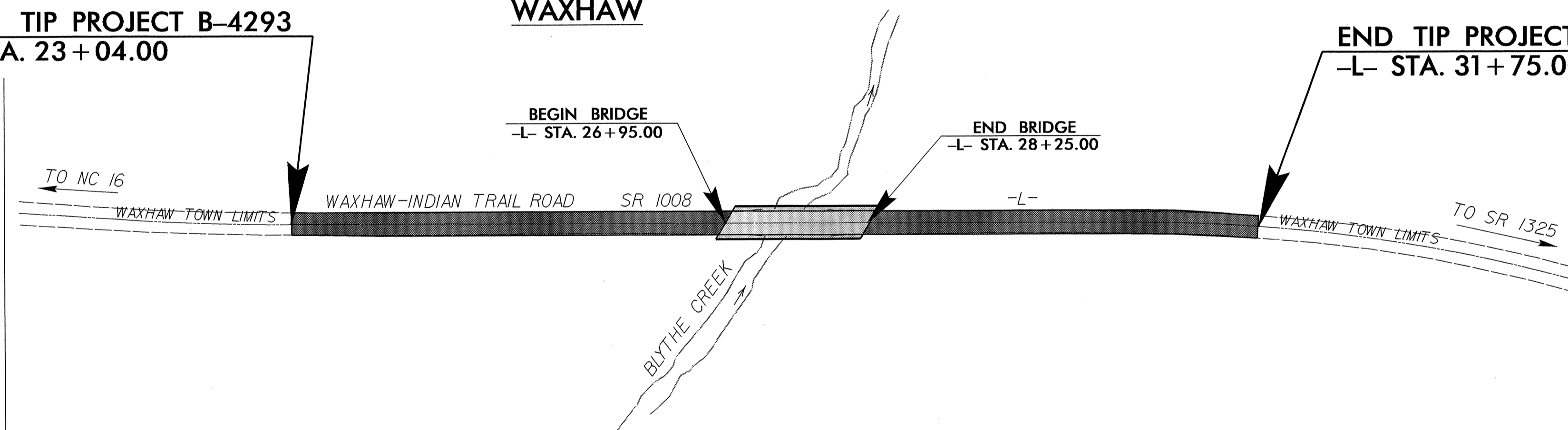
TIP PROJECT: B-4293



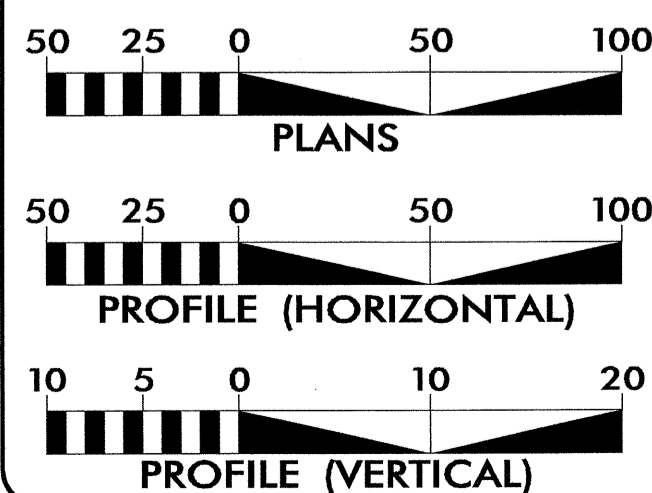
BEGIN TIP PROJECT B-4293
-L- STA. 23+04.00

WAXHAW

END TIP PROJECT B-4293
-L- STA. 31+75.00



GRAPHIC SCALES

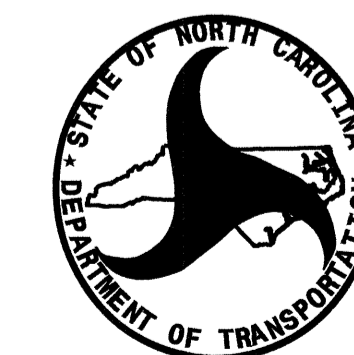


INDEX OF SHEETS

SHEET NO.	DESCRIPTION
UO-1	TITLE SHEET
UO-2	UTILITIES BY OTHERS PLAN SHEETS

UTILITY OWNERS ON PROJECT

(1) Telephone - Windstream Communications



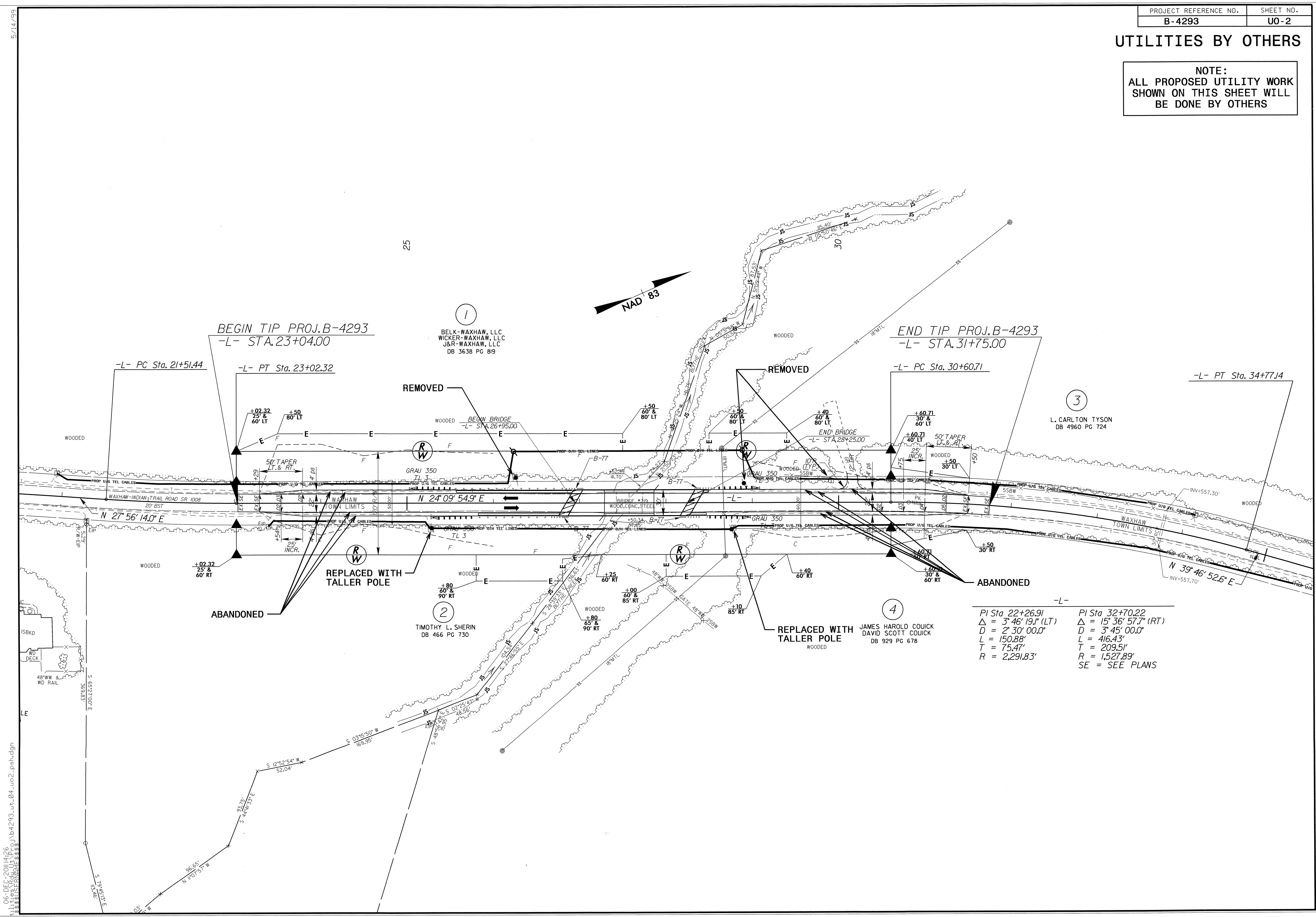
PREPARED IN THE OFFICE OF:
**DIVISION OF HIGHWAYS
UTILITIES ENGINEERING
SECTION**

1591 MAIL SERVICES CENTER
RALEIGH NC 27699-1591
PHONE (919) 707-6690
FAX (919) 250-4151

Roger Worthington, P.E. UTILITIES SECTION ENGINEER
Carl Barclay, P.E. UTILITIES SQUAD LEADER PROJECT ENGINEER
Bo Hemphill, P.E. UTILITIES PROJECT DESIGNER

UTILITIES BY OTHERS

NOTE:
ALL PROPOSED UTILITY WORK
SHOWN ON THIS SHEET WILL
BE DONE BY OTHERS



BEGIN TIP PROJ. B-4293
-L- STA. 23+04.00

END TIP PROJ. B-4293
-L- STA. 31+75.00

1
BELK-WAXHAW, LLC
WICKER-WAXHAW, LLC
J&R-WAXHAW, LLC
DB 3638 PG 819

3
L. CARLTON TYSON
DB 4960 PG 724

2
TIMOTHY L. SHERIN
DB 466 PG 730

4
JAMES HAROLD COUICK
DAVID SCOTT COUICK
DB 929 PG 678

-L- PI Sta 22+26.91	-L- PI Sta 32+70.22
$\Delta = 3^{\circ} 46' 19.1''$ (LT)	$\Delta = 15^{\circ} 36' 57.7''$ (RT)
$D = 2^{\circ} 30' 00.0''$	$D = 3^{\circ} 45' 00.0''$
$L = 150.88'$	$L = 416.43'$
$T = 75.47'$	$T = 209.51'$
$R = 2,291.83'$	$R = 1,527.89'$
	SE = SEE PLANS

5/14/99
06-DEC-2011 14:26
R:\U\11\06-DEC-2011\4293\1b4293.ut_04.uo2_psh.dgn