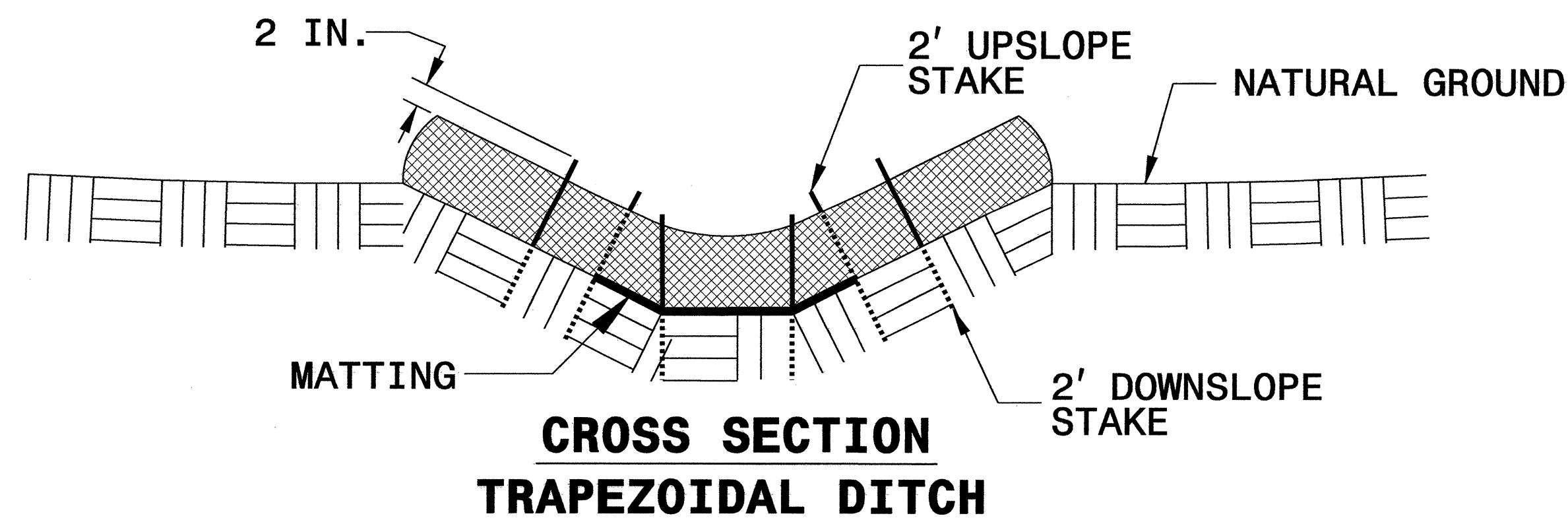
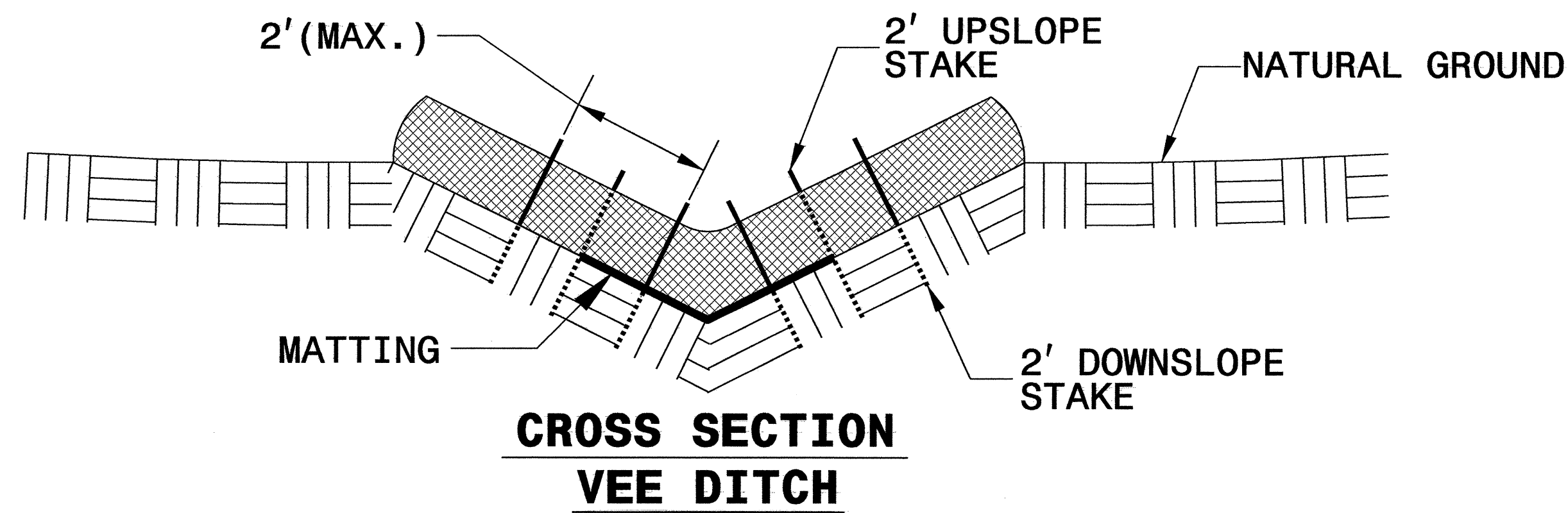
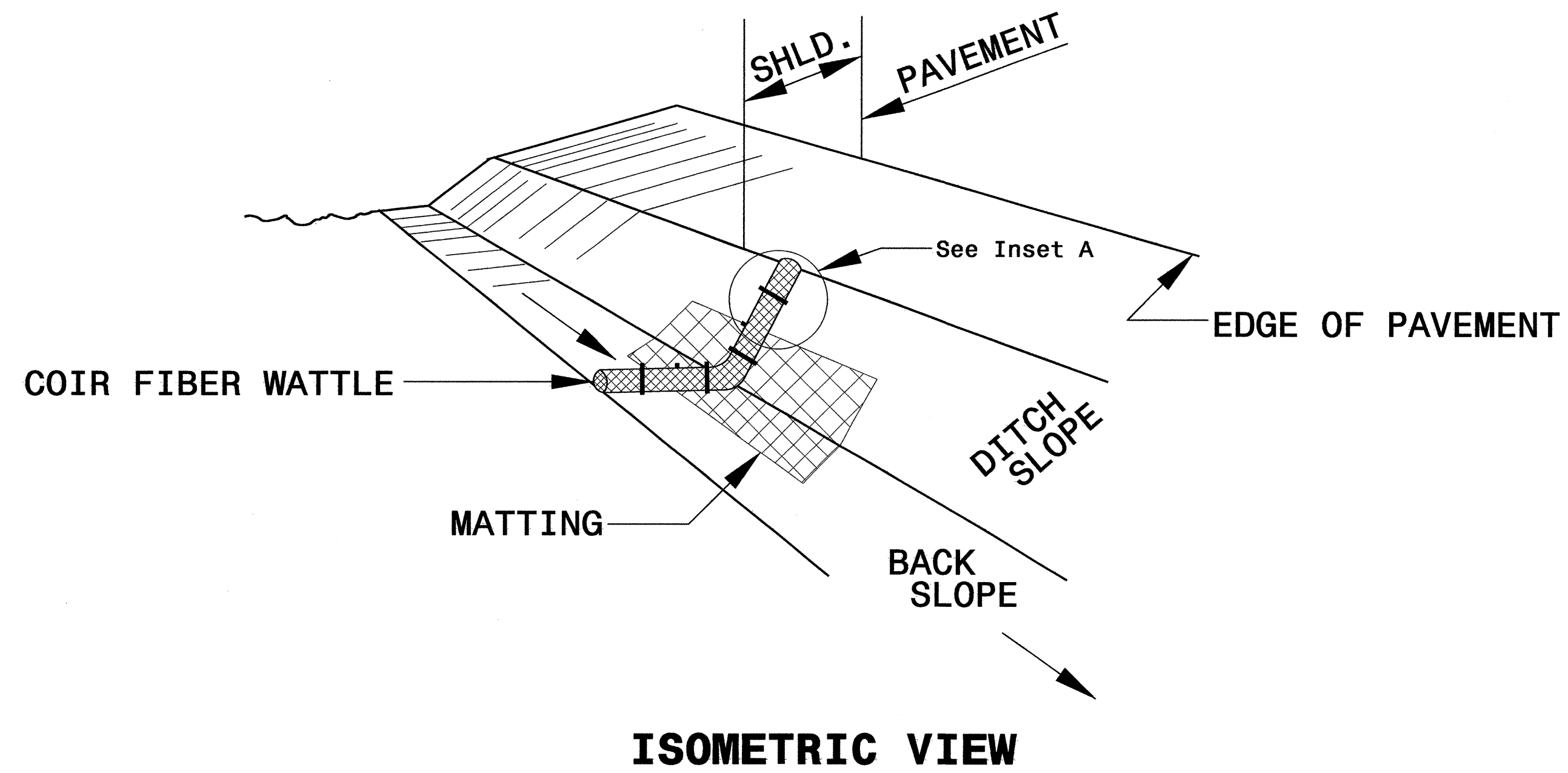


| | |
|---------------------------------|---------------------|
| PROJECT REFERENCE NO. B-4647 | SHEET NO. EC-2 |
| RW SHEET NO. | |
| ROADWAY DESIGN ENGINEER | HYDRAULICS ENGINEER |

COIR FIBER WATTLE DETAIL



NOTES:

USE MINIMUM 12 IN. DIAMETER COIR FIBER (COCONUT FIBER) WATTLE.

USE 2 FT. WOODEN STAKES WITH A 2 IN. BY 2 IN. NOMINAL CROSS SECTION.

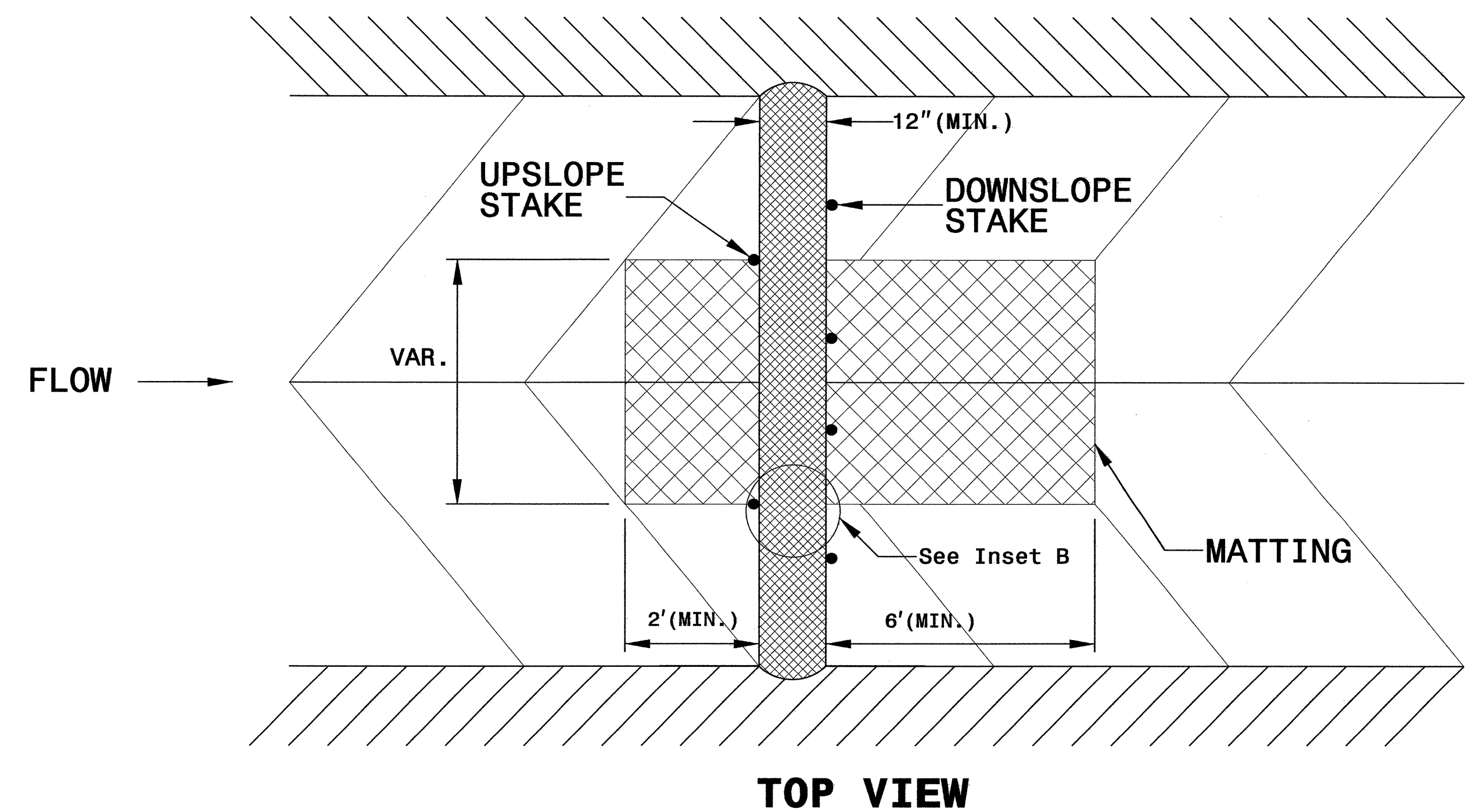
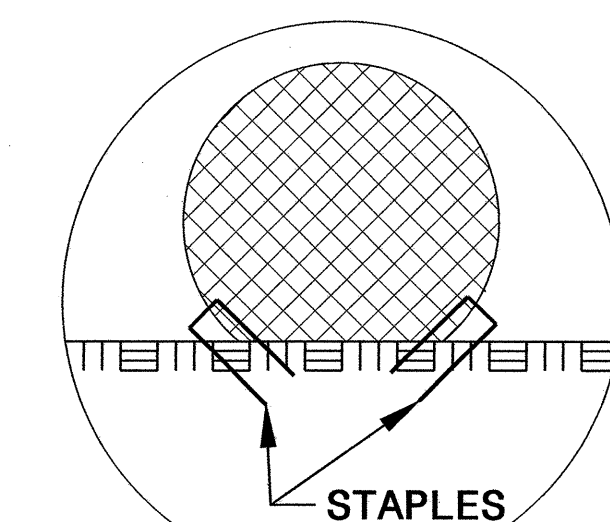
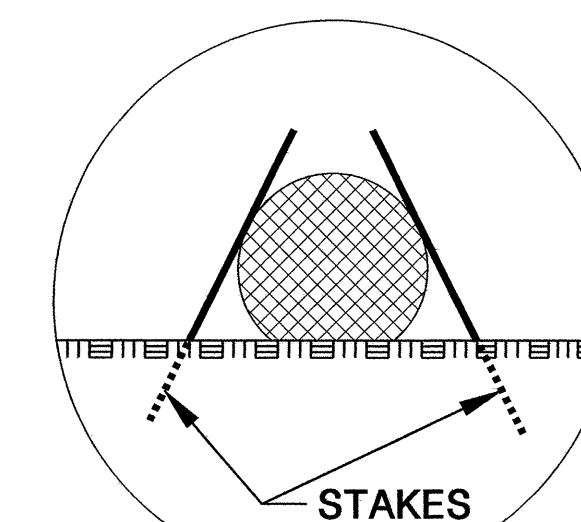
ONLY INSTALL WATTLE(S) TO A HEIGHT IN DITCH SO FLOW WILL NOT WASH AROUND WATTLE AND SCOUR DITCH SLOPES AND AS DIRECTED.

INSTALL A MINIMUM OF 2 UPSLOPE STAKES AND 4 DOWNSLOPE STAKES AT AN ANGLE TO WEDGE WATTLE TO BOTTOM OF DITCH.

PROVIDE STAPLES MADE OF 0.125 IN. DIAMETER STEEL WIRE FORMED INTO A U SHAPE NOT LESS THAN 12" IN LENGTH.

INSTALL STAPLES APPROXIMATELY EVERY 1 LINEAR FOOT ON BOTH SIDES OF WATTLE AND AT EACH END TO SECURE IT TO THE SOIL.

INSTALL MATTING IN ACCORDANCE WITH SECTION 1631 OF THE STANDARD SPECIFICATIONS.



DIVISION OF HIGHWAYS
STATE OF NORTH CAROLINA

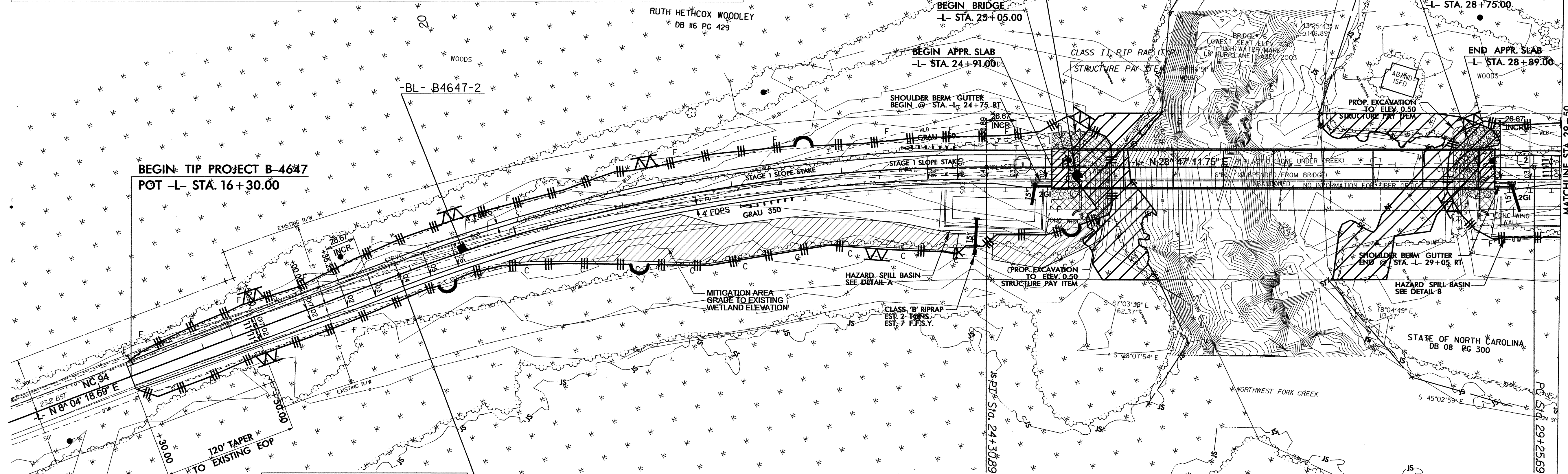
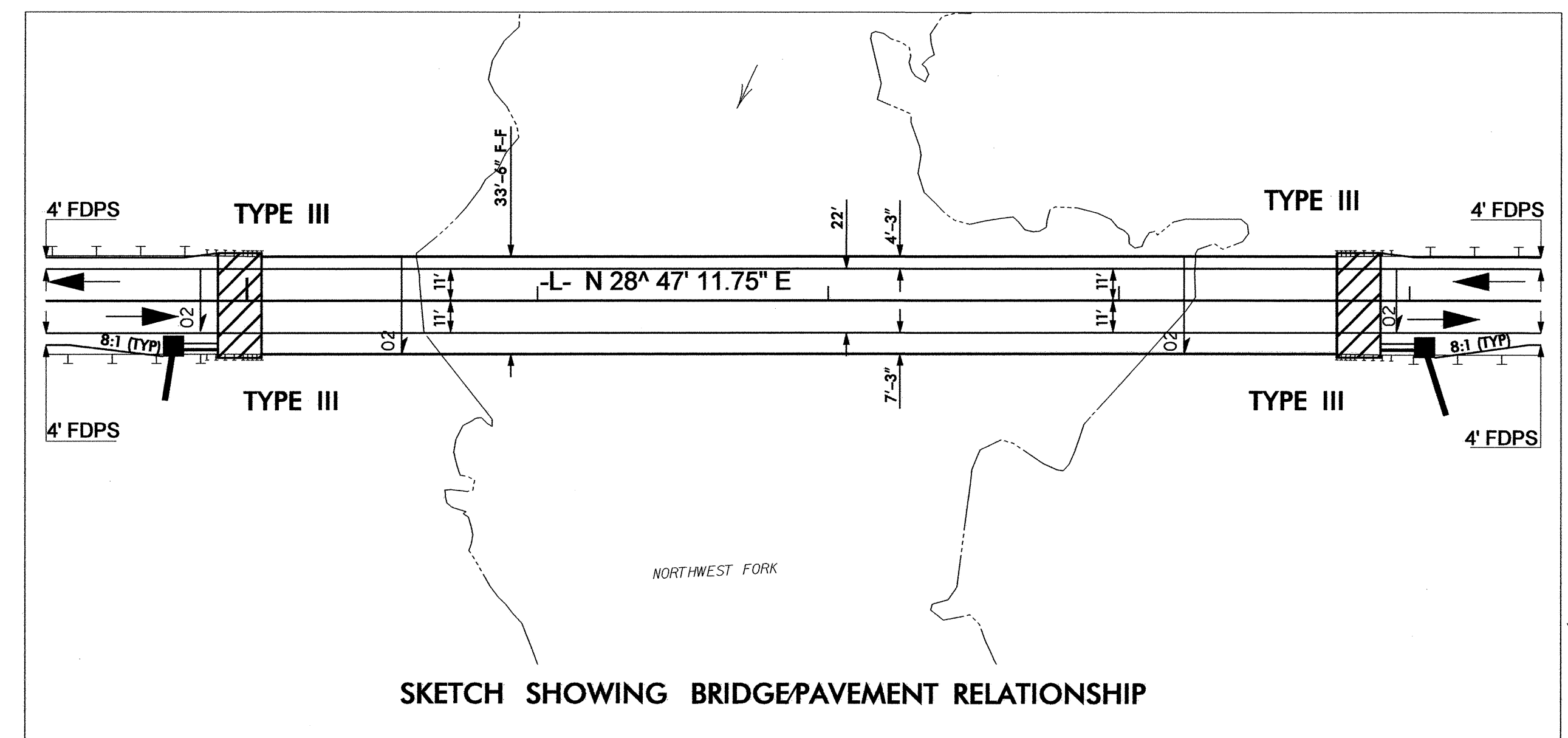
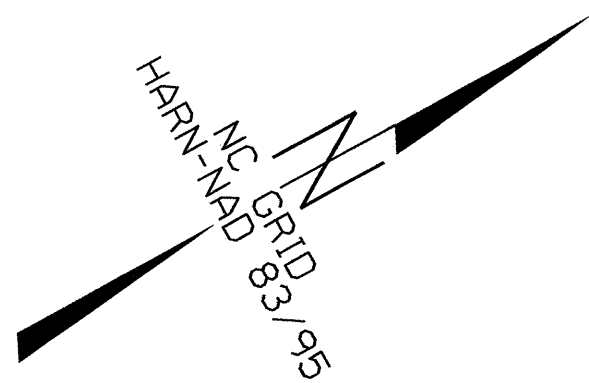
| | |
|--|--------------------------|
| PROJECT REFERENCE NO. <i>B-4647</i> | SHEET NO. <i>EC-3</i> |
| ROADWAY DESIGN ENGINEER | HYDRAULICS ENGINEER |

SOIL STABILIZATION TIMEFRAMES

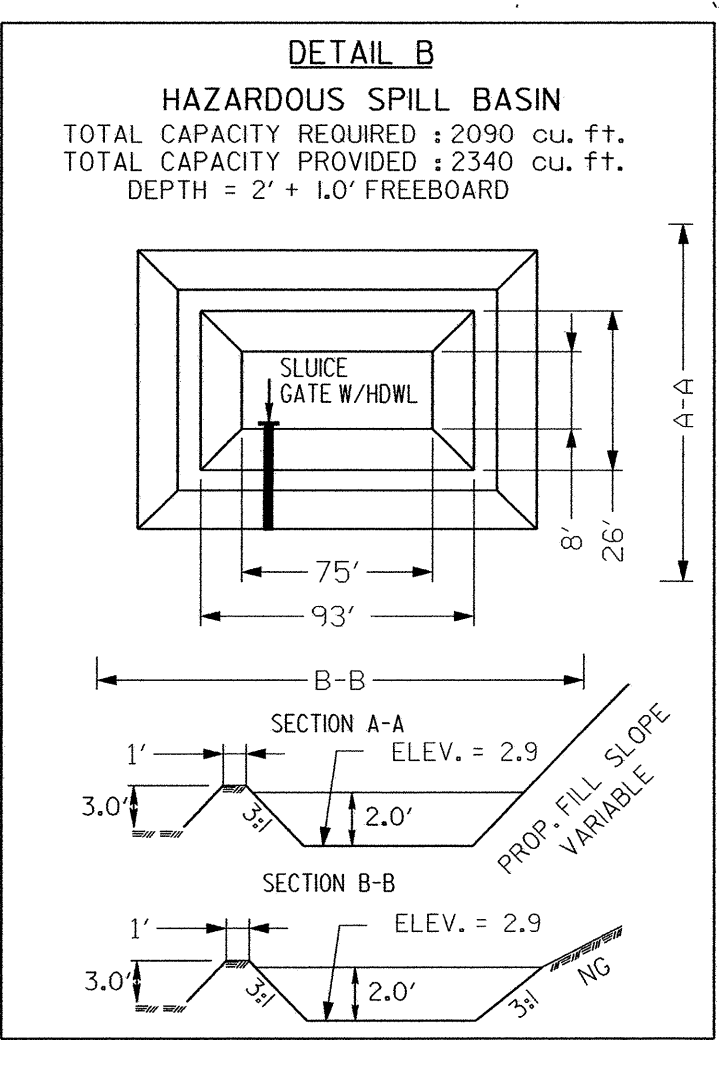
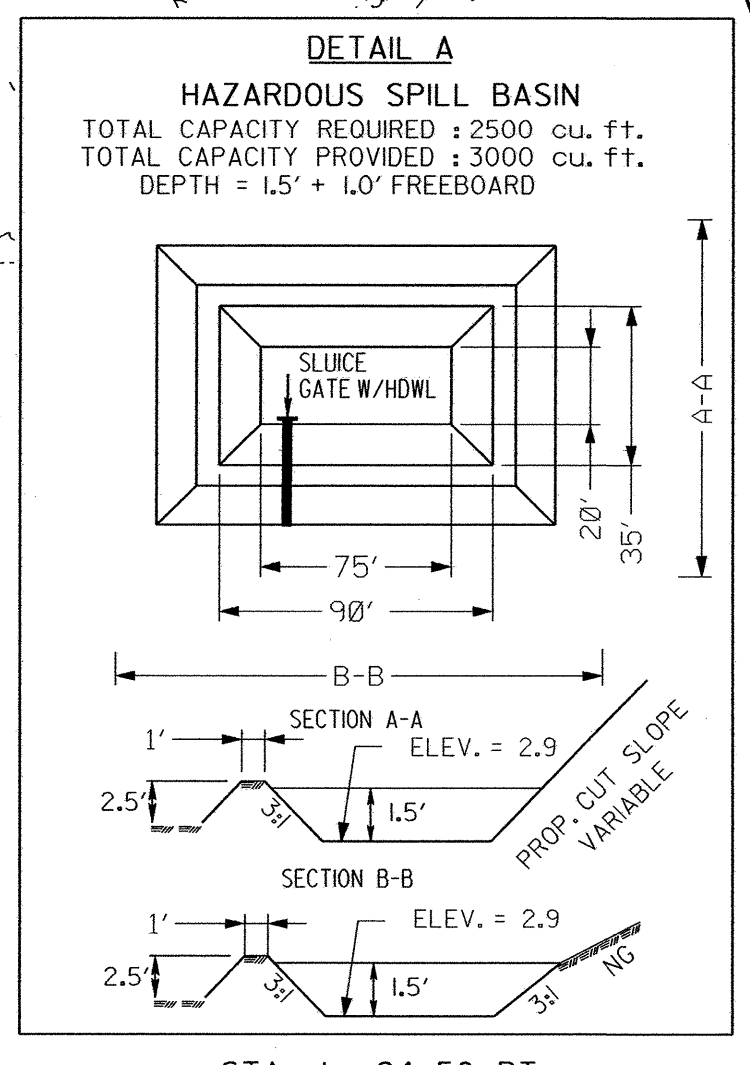
| <i>SITE DESCRIPTION</i> | <i>STABILIZATION TIME</i> | <i>TIMEFRAME EXCEPTIONS</i> |
|--|---------------------------|--|
| PERIMETER DIKES, SWALES, DITCHES AND SLOPES | 7 DAYS | NONE |
| HIGH QUALITY WATER (HQW) ZONES | 7 DAYS | NONE |
| SLOPES STEEPER THAN 3:1 | 7 DAYS | IF SLOPES ARE 10' OR LESS IN LENGTH AND ARE NOT STEEPER THAN 2:1, 14 DAYS ARE ALLOWED. |
| SLOPES 3:1 OR FLATTER | 14 DAYS | 7 DAYS FOR SLOPES GREATER THAN 50' IN LENGTH. |
| ALL OTHER AREAS WITH SLOPES FLATTER THAN 4:1 | 14 DAYS | NONE, EXCEPT FOR PERIMETERS AND HQW ZONES. |

| | |
|-------------------------|---------------------|
| PROJECT REFERENCE NO. | SHEET NO. |
| B-4647 | EC-04/CONST.04 |
| R/W SHEET NO. | HYDRAULICS ENGINEER |
| ROADWAY DESIGN ENGINEER | |

ENVIRONMENTALLY SENSITIVE AREA
SEE PROJECT SPECIAL PROVISIONS



BEGIN TIP PROJECT B-4647
POT -L- STA. 16+30.00



-L- CURVE DATA
 CURVE 1
 PI -L- Sta 21+62.72
 $\Delta = 20^\circ 42' 53.06''$ (RT)
 $D = 3^\circ 49' 10.99''$
 $L = 542.31'$
 $T = 274.15'$
 $R = 1,500.00'$
 $e = 6\%$
 RUNOFF = 160'
 DESIGN SPEED = 60 MPH

NOTE:
PLACE TEMPORARY ROCK SEDIMENT DAMS TYPE - B
AND TEMPORARY ROCK SILT CHECKS TYPE - A AT
DRAINAGE OUTLETS.

FOR STRUCTURE PLANS SEE
SHEET NOS. S-1 THRU S-30

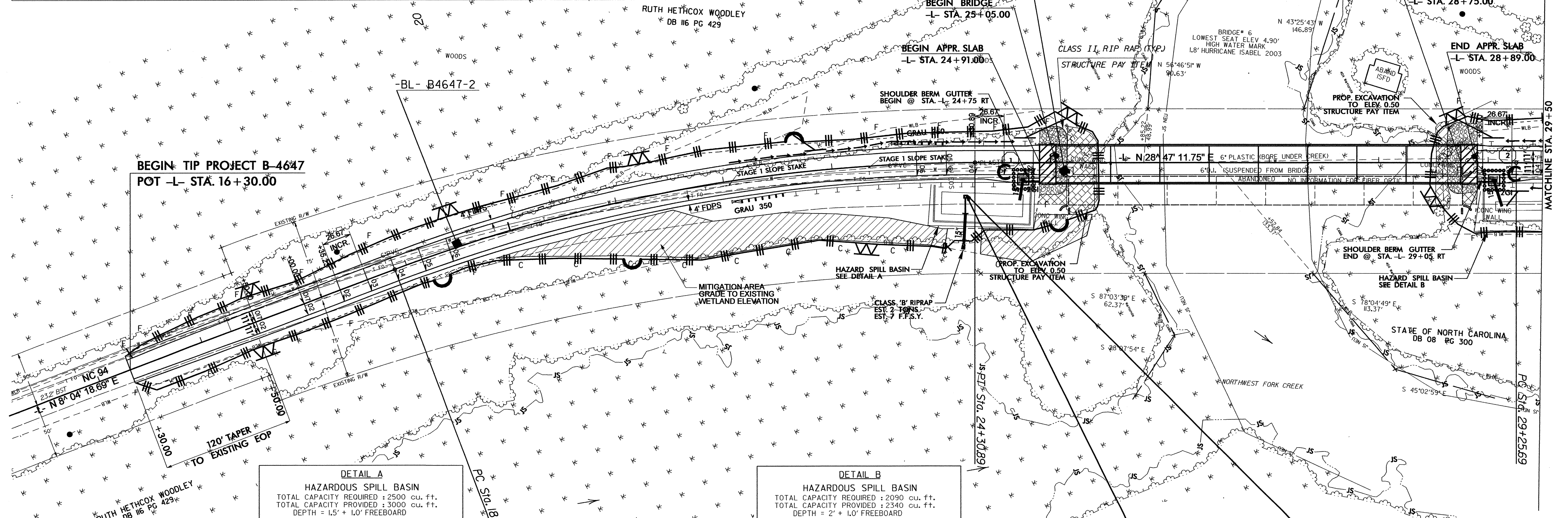
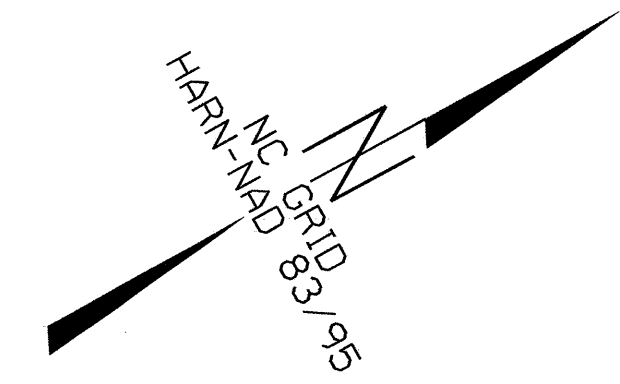
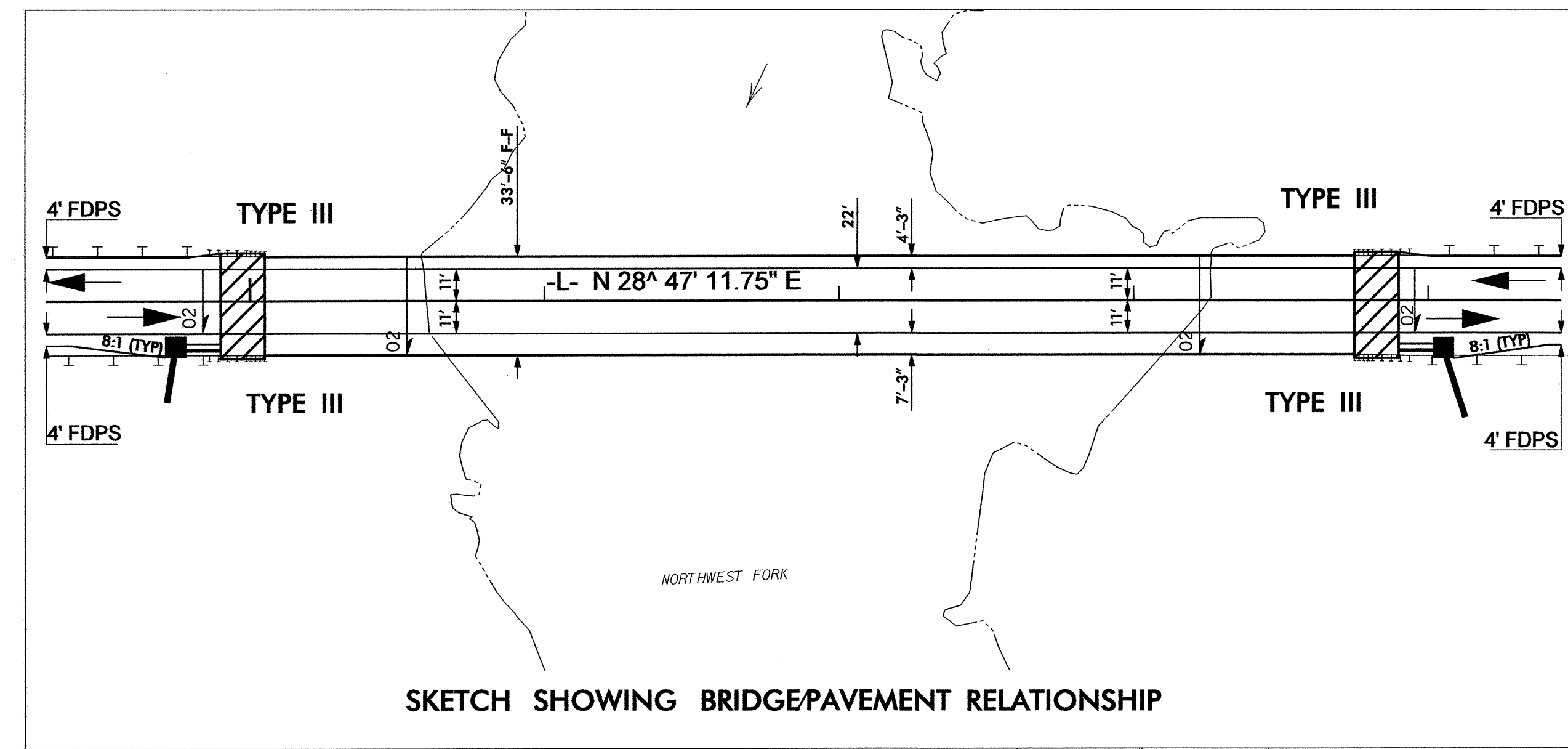
FOR -L- PROFILE
SEE SHEET NO.6

CLEARING AND GRUBBING
EROSION CONTROL FOR
CONSTRUCTION SHEET 4

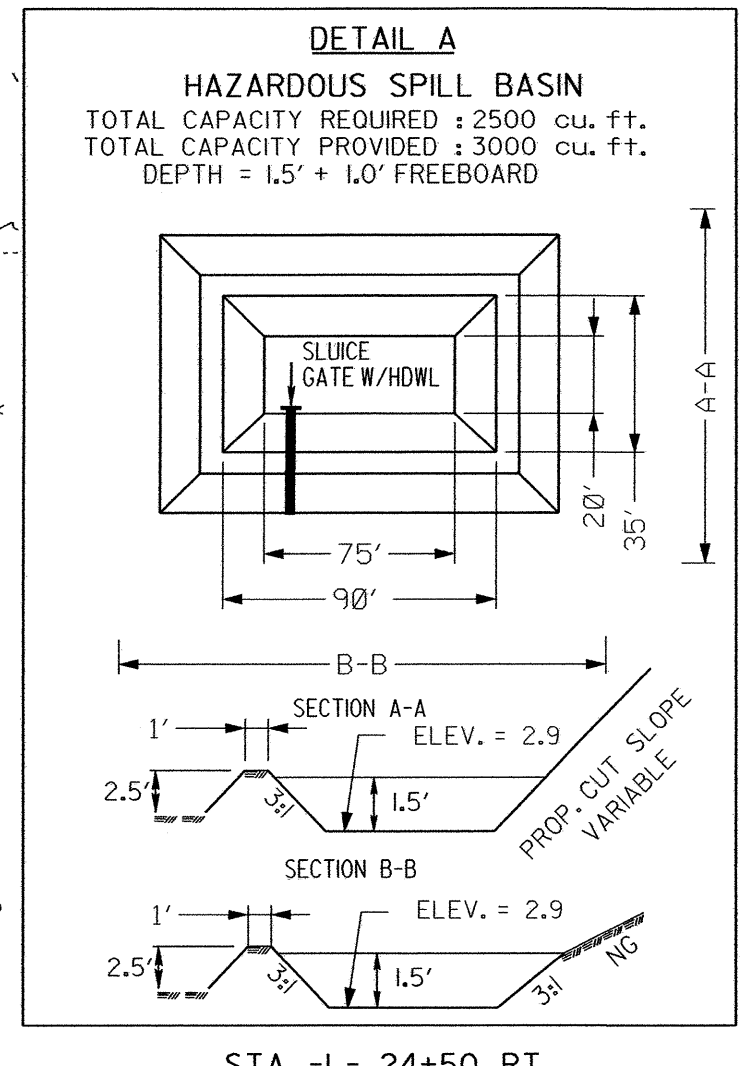
REVISIONS

13-OCT-2011 07:47
 R:\Environmental\Design\B-4647-EC.dsn.psh4.dgn
 8/17/99
 AT REN24768

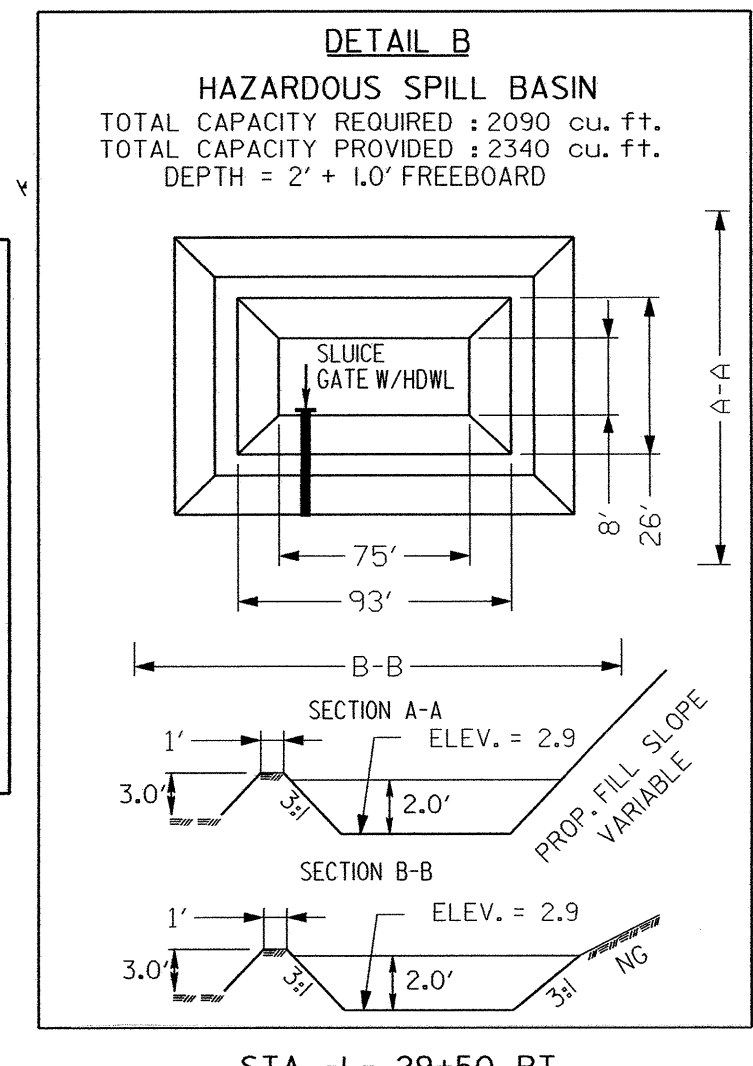
| | |
|-------------------------|---------------------|
| PROJECT REFERENCE NO. | SHEET NO. |
| B-4647 | EC-06/CONST.04 |
| RW SHEET NO. | |
| ROADWAY DESIGN ENGINEER | HYDRAULICS ENGINEER |



REVISIONS



-L- CURVE DATA
CURVE 1
 PI -L- Sta 21+62.72
 $\Delta = 20^\circ 42' 53.06''$ (RT)
 $D = 3^\circ 49' 10.99''$
 $L = 542.31'$
 $T = 274.15$
 $R = 1,500.00'$
 $e = 6\%$
RUNOFF = 160'
DESIGN SPEED = 60 MPH



FOR STRUCTURE PLANS SEE SHEET NOS. S-1 THRU S-30

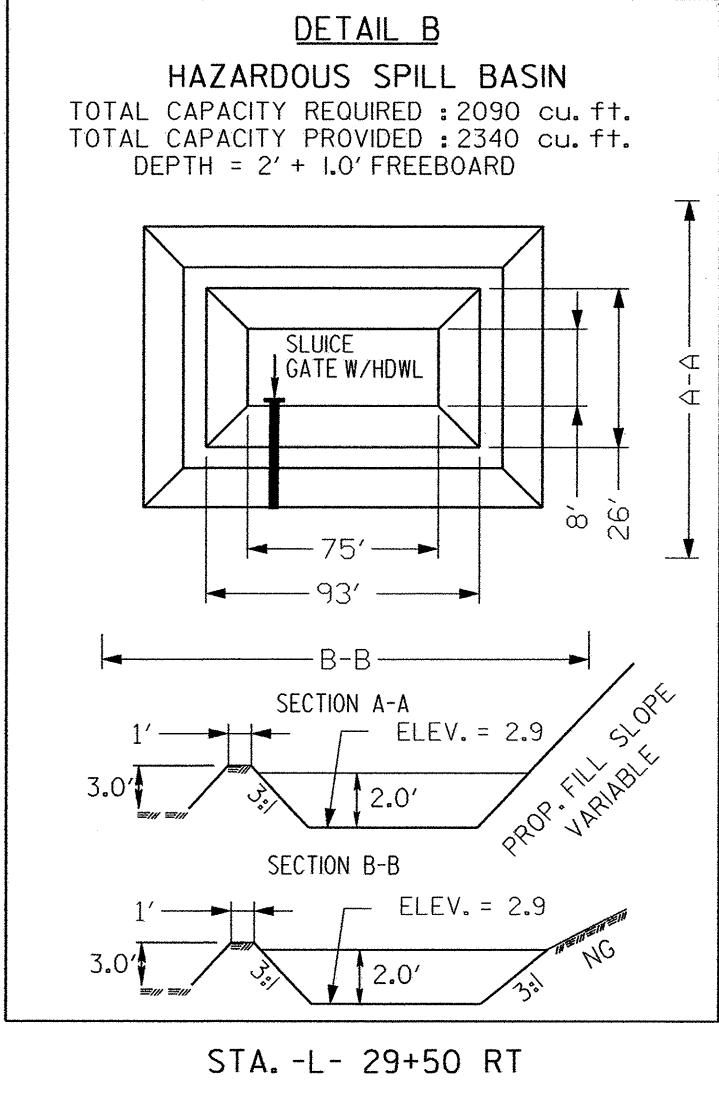
FOR -L- PROFILE SEE SHEET NO.6

UTILIZE HAZARDOUS SPILL BASIN(S) AS SILT BASIN DURING CONSTRUCTION.

1.5 inch Skimmer with 1.25 inch Orifice Diameter ID 4.1F

B:\OCT-2011\07154
 R:\Environmental\Design\B-4647_EC_dan_pah4.dgn
 mabcock ST PENN27768

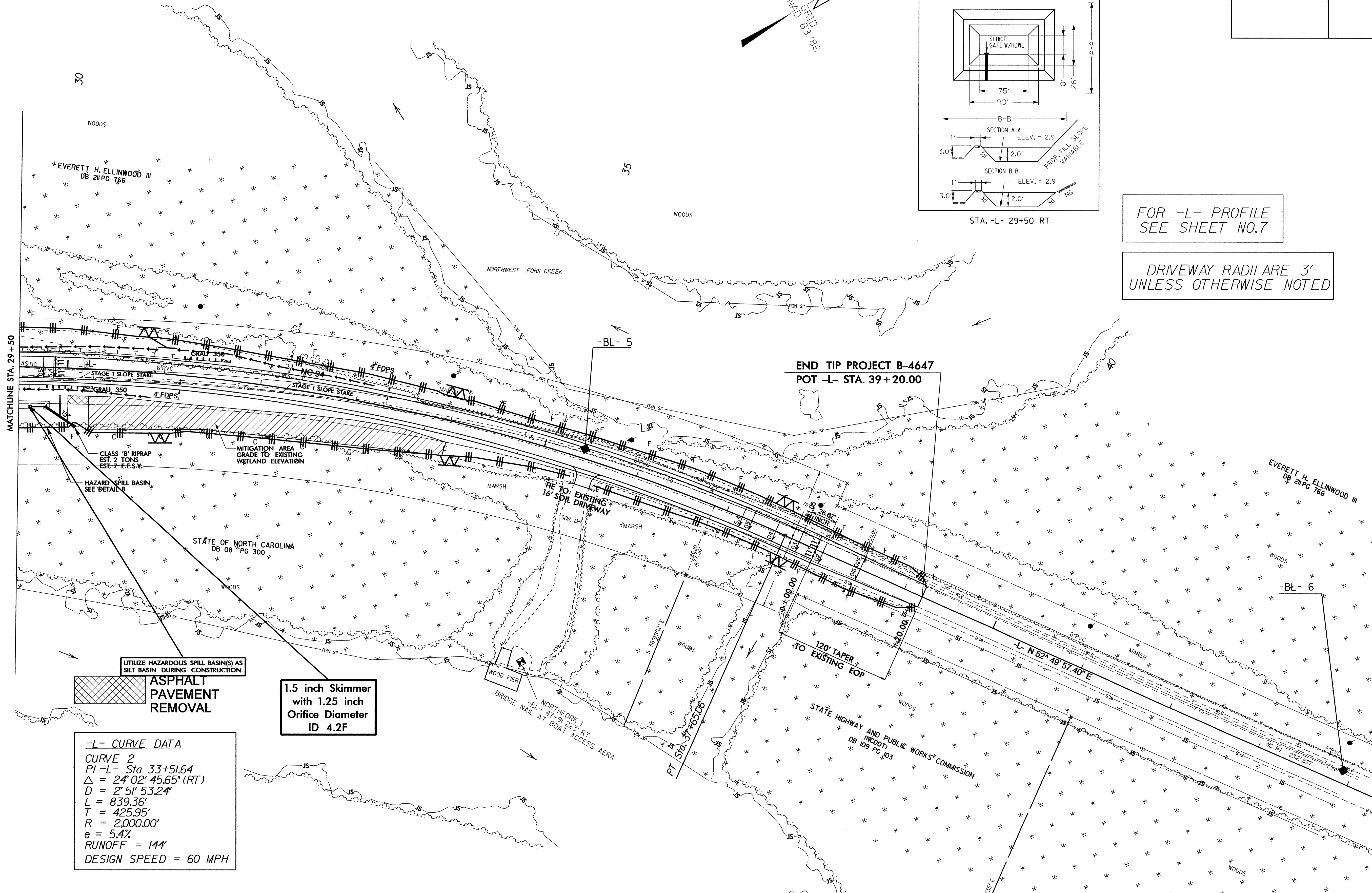
| | |
|---------------------------------|-----------------------------|
| PROJECT REFERENCE NO. B-4647 | SHEET NO. EC-07/CONST.05 |
| RW SHEET NO. | |
| ROADWAY DESIGN ENGINEER | HYDRAULICS ENGINEER |



FOR -L- PROFILE
SEE SHEET NO.7

DRIVEWAY RADII ARE 3'
UNLESS OTHERWISE NOTED

REVISIONS



-L- CURVE DATA
CURVE 2
PI -L- Sta 33+51.64
 $\Delta = 24^{\circ} 02' 45.65"$ (RT)
 $D = 2' 51' 53.24"$
 $L = 839.36'$
 $T = 425.95'$
 $R = 2,000.00'$
 $e = 5.4\%$
RUNOFF = 144'
DESIGN SPEED = 60 MPH

8/17/99
13-OCT-2011 07:59
R:\Environmental\Design\B-4647-EC.dsn-psst5.dgn
mebacok AT RENY24768