

STATE OF NORTH CAROLINA
DEPARTMENT OF TRANSPORTATION

TIP NO. B-4494	SHEET NO. PMP-1
APPROVED: <i>Basir A. Rashid</i>	
DATE: 12-1-11	
SEAL	

PAVEMENT MARKING PLAN
CURRITUCK COUNTY

LOCATION: BRIDGE NO. 3 OVER TULLS CREEK ON SR 1232 (POYNER RD)

T.I.P.: B-4494

CONTRACT: C202746

B-4494 PAVEMENT MARKING SCHEDULE

SYMBOL	DESCRIPTION	FINAL PAVEMENT MARKINGS
PA	WHITE EDGELINE	PAINT (4")
PI	YELLOW DOUBLE CENTER	PAINT (4")

ROADWAY STANDARD DRAWING

THE FOLLOWING ROADWAY STANDARDS AS APPEAR IN "ROADWAY STANDARD DRAWINGS" - PROJECT SERVICES UNIT - N.C. DEPARTMENT OF TRANSPORTATION - RALEIGH, N.C., DATED JANUARY 2012 ARE APPLICABLE TO THIS PROJECT AND BY REFERENCE HEREBY ARE CONSIDERED A PART OF THESE PLANS:

STD. NO.	TITLE
1205.01	PAVEMENT MARKINGS - LINE TYPES AND OFFSETS
1205.02	PAVEMENT MARKINGS - 2 LANE AND MULTILANE ROADWAYS
1205.12	PAVEMENT MARKINGS - BRIDGES
1261.01	GUARDRAIL AND BARRIER DELINEATOR SPACING
1261.02	GUARDRAIL AND BARRIER DELINEATOR TYPES
1262.01	GUARDRAIL END DELINEATION

GENERAL NOTES

THE FOLLOWING GENERAL NOTES APPLY AT ALL TIMES FOR THE DURATION OF THE CONSTRUCTION PROJECT, EXCEPT WHEN OTHERWISE NOTED IN THE PLAN, OR DIRECTED BY THE ENGINEER.

- A) INSTALL PAVEMENT MARKINGS AND PAVEMENT MARKERS ON THE FINAL SURFACE AS FOLLOWS:

ROAD NAME	MARKING	MARKER
-L- SR 1232 (POYNER RD)	PAINT	NONE
- B) PLACE TWO APPLICATIONS OF PAINT PAVEMENT MARKINGS ON THE FINAL WEARING SURFACE. PLACE THE SECOND APPLICATION OF PAINT UPON SUFFICIENT DRYING TIME OF THE FIRST.
- C) TIE PROPOSED PAVEMENT MARKING LINES TO EXISTING PAVEMENT MARKING LINES.
- D) REMOVE/REPLACE ANY CONFLICTING/DAMAGED PAVEMENT MARKINGS AND MARKERS.
- E) PASSING ZONES WILL BE DETERMINED IN THE FIELD AND MUST BE APPROVED BY THE ENGINEER.
- G) REMOVE ALL RESIDUE AND SURFACE LAITANCE BY ACCEPTABLE METHODS ON THE BRIDGE DECK(S) PRIOR TO PLACING (PAVEMENT MARKING MATERIAL HERE) PAVEMENT MARKING.

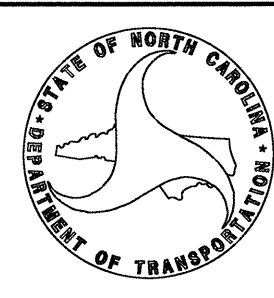
INDEX

SHEET NO.	DESCRIPTION
PMP-1	PAVEMENT MARKING PLAN TITLE AND SCHEDULE SHEET
PMP-2	PAVEMENT MARKING DETAIL

PLAN PREPARED BY: N.C.D.O.T. SIGNING AND DELINEATION UNIT

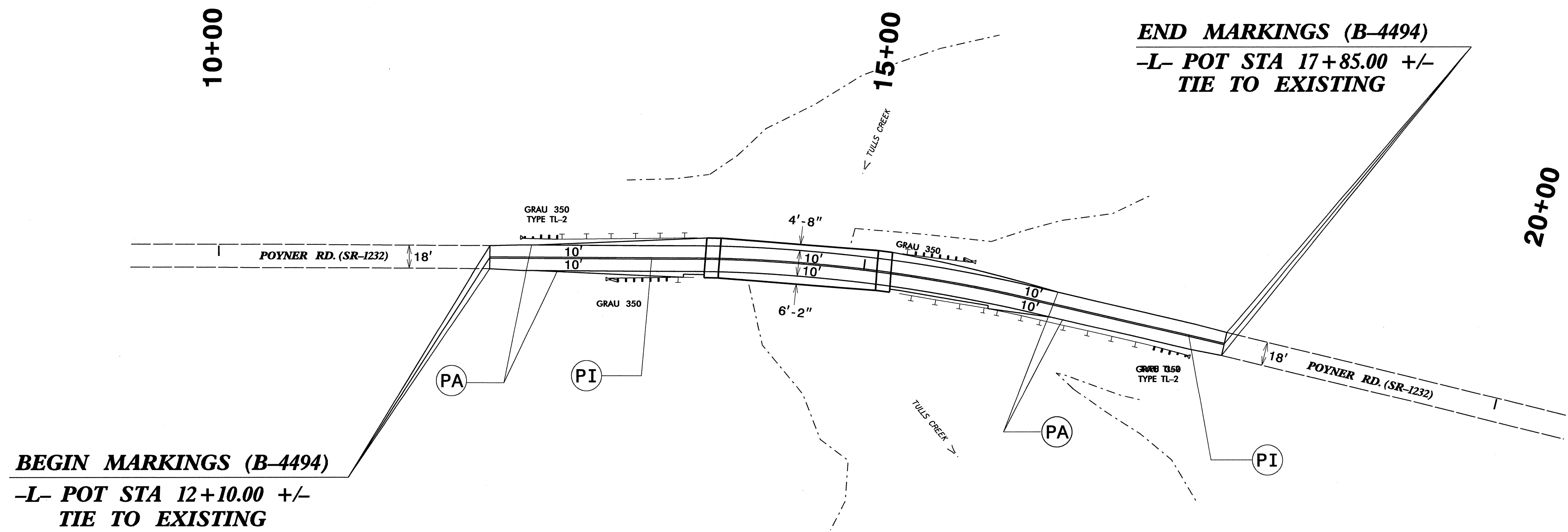
AYMAN ALQUDWAH, PE, CPM, SIGNING & DELINEATION REGIONAL ENGINEER

BASIR A. RASHID SIGNING & DELINEATION PROJECT DESIGN ENGINEER



01-DEC-2011 07:53
 P:\TIP\Projects\B4494\Traffic\Signing\CADD\PM\B4494_Sgn-BPMP_PMP-1.dgn
 Basir Rashid

TIP NO. B-4494	SHEET NO. PMP-2
APPROVED: <i>[Signature]</i>	
DATE: 12-1-11	
SEAL	



PAVEMENT MARKING LEGEND	
(PA)	WHITE EDGELINE (4")
(PI)	YELLOW DOUBLE CENTER (4")

PAVEMENT MARKING DETAIL

01-DEC-2011 07:54
 P:\TIP\Projects-B\B4494-Traffic\Signing\CADD\PMF\B4494_Sgn_BPMP_PMP-2.dgn
 brashid AT TE247799