

See Sheet 1-A For Index of Sheets
See Sheet 1-B For Conventional Symbols

T.I.P. NO.	SHEET NO.
B-3819	UO-1

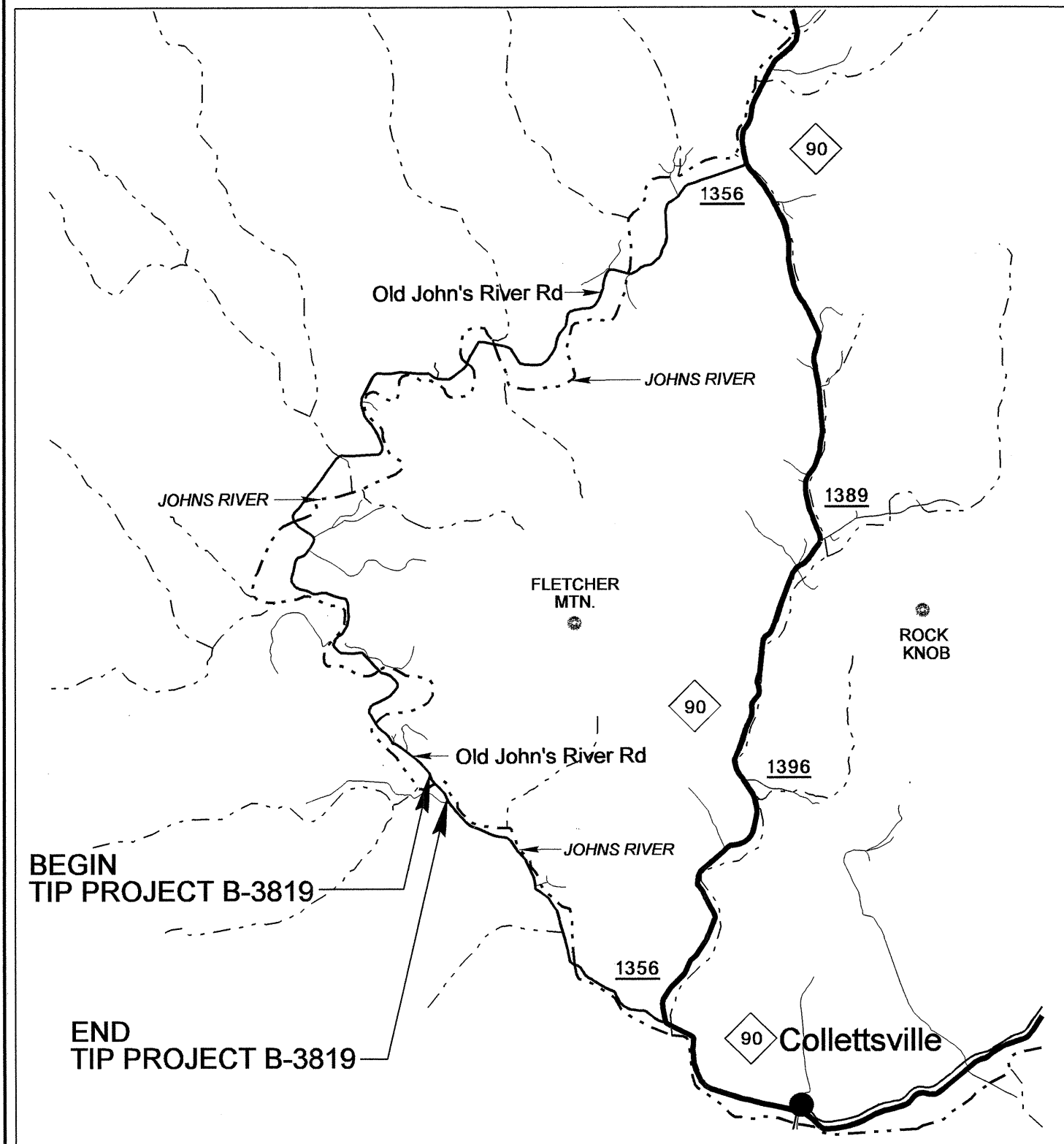
STATE OF NORTH CAROLINA
DIVISION OF HIGHWAYS

**UTILITIES BY OTHERS PLANS
CALDWELL COUNTY**

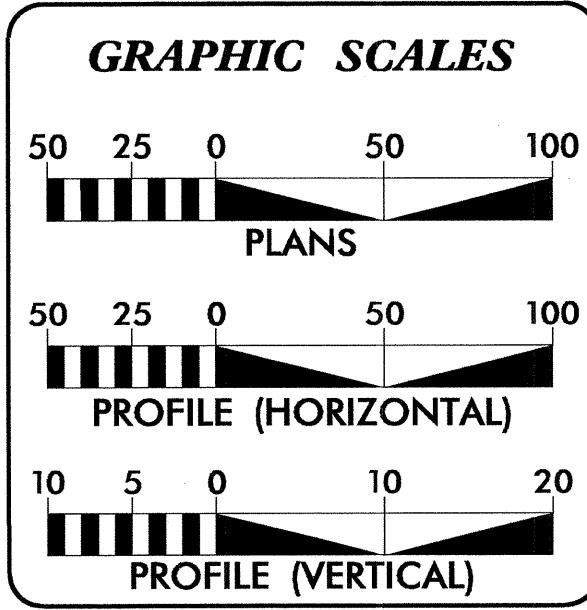
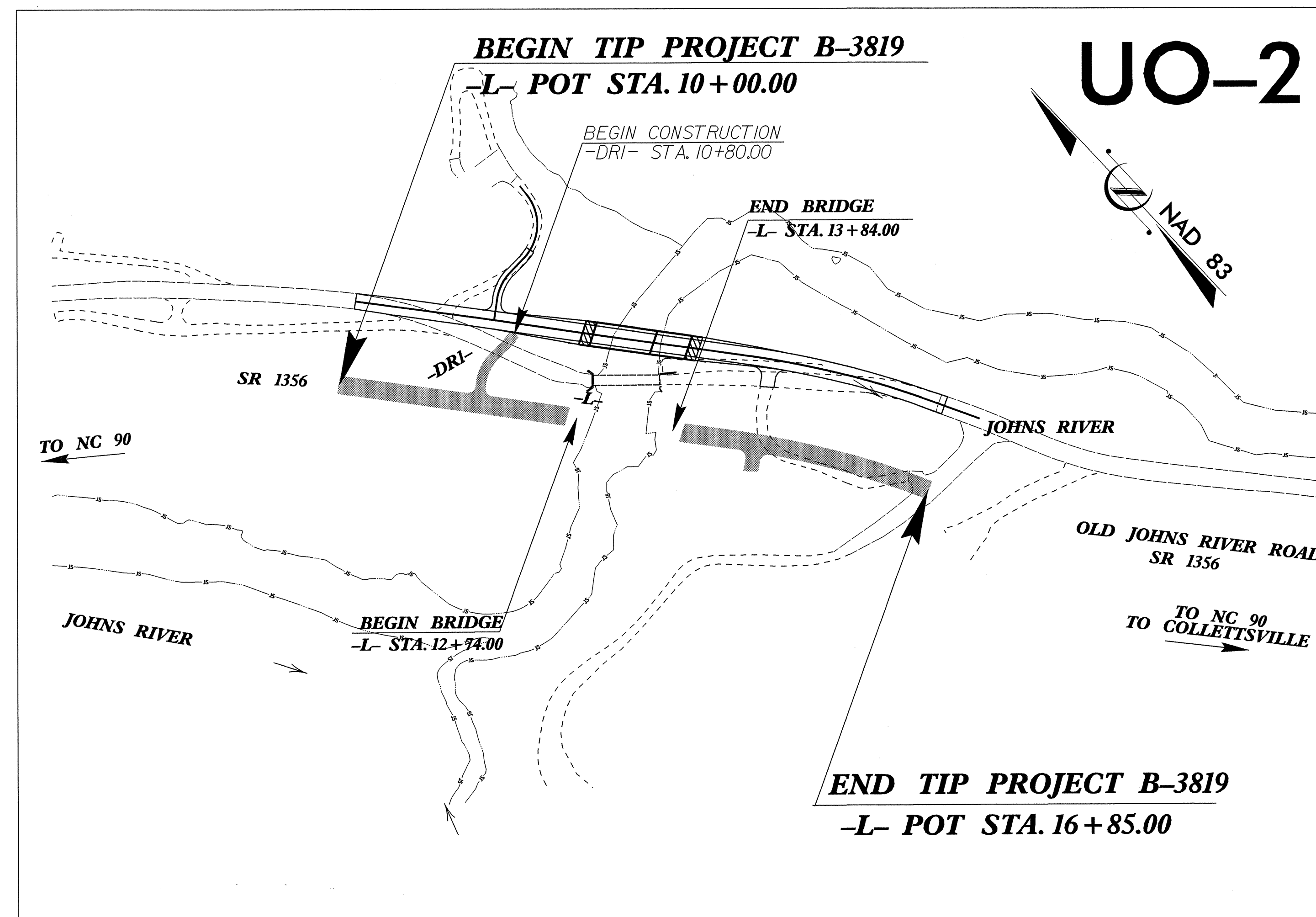
**LOCATION: BRIDGE NO. 184 OVER THE JOHNS RIVER
ON SR 1356 (OLD JOHNS RIVER ROAD)**

TYPE OF WORK: POWER AND TELEPHONE LINE RELOCATION

TIP PROJECT: B-3819



**VICINITY MAP SHOWING LOCATION
OF PROJECT B-3819**

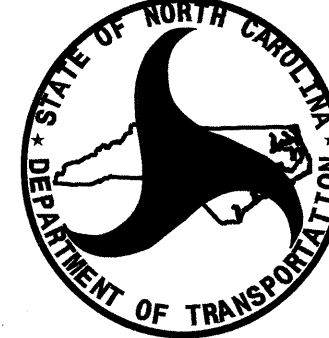


INDEX OF SHEETS

SHEET NO.	DESCRIPTION
UO-1	TITLE SHEET
UO-2	UTILITY BY OTHERS PLAN SHEETS

UTILITY OWNERS ON PROJECT

- AT&T
- BLUE RIDGE ELECTRIC



PREPARED IN THE OFFICE OF:
**DIVISION OF HIGHWAYS
UTILITIES ENGINEERING
SECTION**

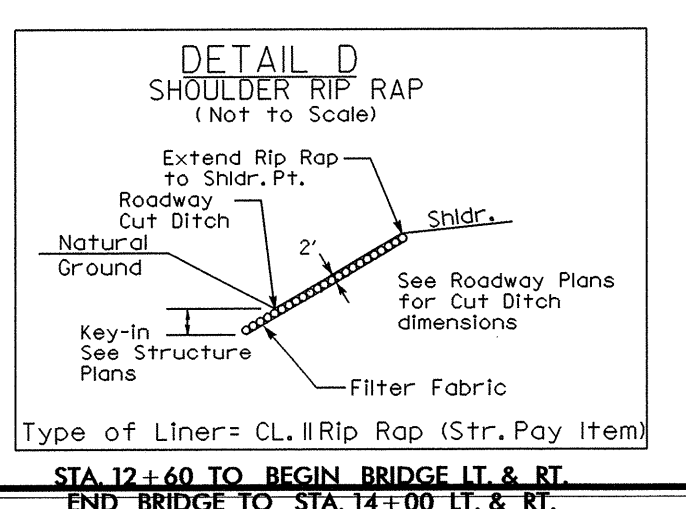
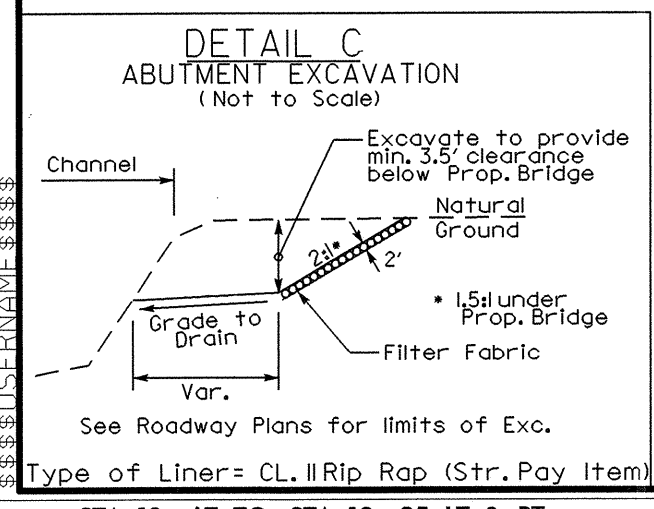
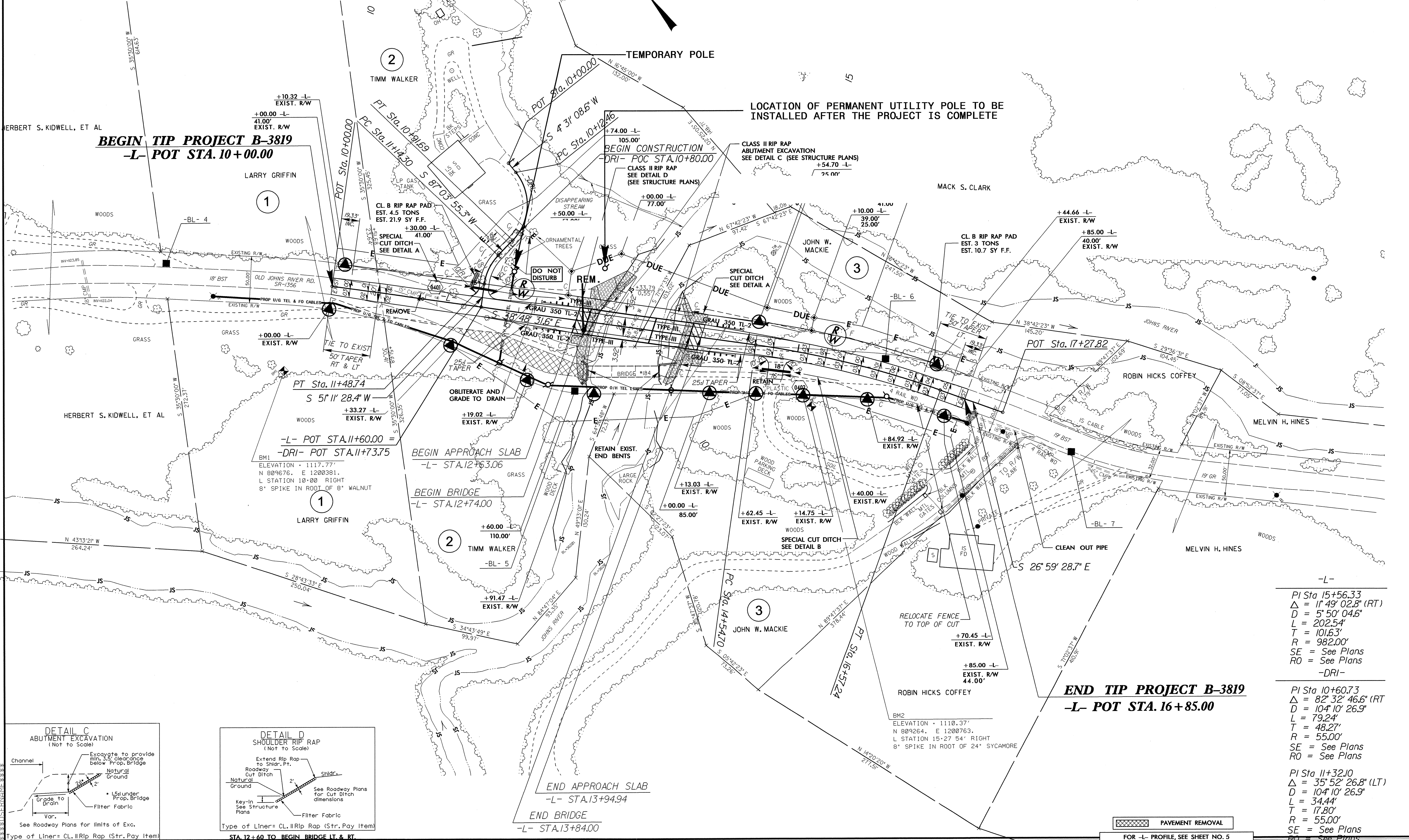
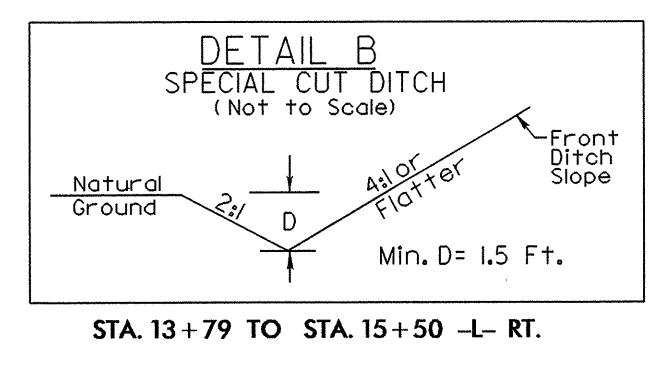
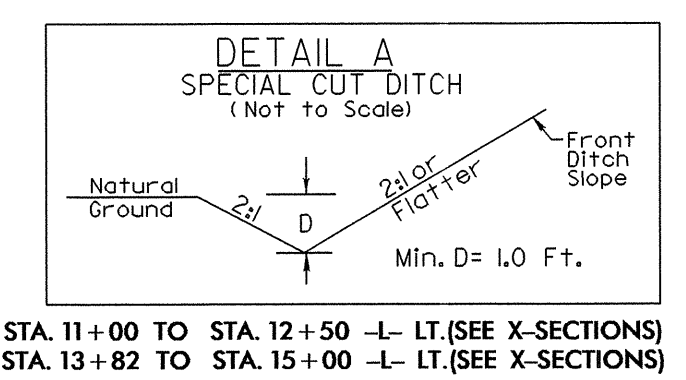
1591 MAIL SERVICES CENTER
RALEIGH, NC 27699-1591
PHONE (919) 797-5699
FAX (919) 250-4151

Roger Worthington, P.E. UTILITIES SECTION ENGINEER
Carl Barclay, P.E. UTILITIES SQUAD LEADER PROJECT ENGINEER
Ali Kouchehi, PE UTILITIES PROJECT DESIGNER

06-DEC-2011 16:29
R:\Utilities\Proj\3819_rdy_tsh.dgn
\$\$\$USERNAME\$\$\$

UTILITIES BY OTHERS

NOTE:
 ALL PROPOSED UTILITY WORK
 SHOWN ON THIS SHEET WILL
 BE DONE BY OTHERS



-L-
 PI Sta 15+56.33
 $\Delta = 11^{\circ} 49' 02.8''$ (RT)
 $D = 5^{\circ} 50' 04.6''$
 $L = 202.54'$
 $T = 101.63'$
 $R = 982.00'$
 SE = See Plans
 RO = See Plans
 -DRI-

PI Sta 10+60.73
 $\Delta = 82^{\circ} 32' 46.6''$ (RT)
 $D = 104^{\circ} 10' 26.9''$
 $L = 79.24'$
 $T = 48.27'$
 $R = 55.00'$
 SE = See Plans
 RO = See Plans

PI Sta 11+32.10
 $\Delta = 35^{\circ} 52' 26.8''$ (LT)
 $D = 104^{\circ} 10' 26.9''$
 $L = 34.44'$
 $T = 17.80'$
 $R = 55.00'$
 SE = See Plans
 RO = See Plans

PAVEMENT REMOVAL
 FOR -L- PROFILE, SEE SHEET NO. 5
 FOR STRUCTURE PLANS, SEE SHEET S-1 THRU S-27

5/14/99
 07-DEC-2011 10:40
 R:\UD\CH\PROJ\B-3819_r.dwg, psh4.dgn
 \$\$\$\$\$\$
 \$\$\$\$\$\$