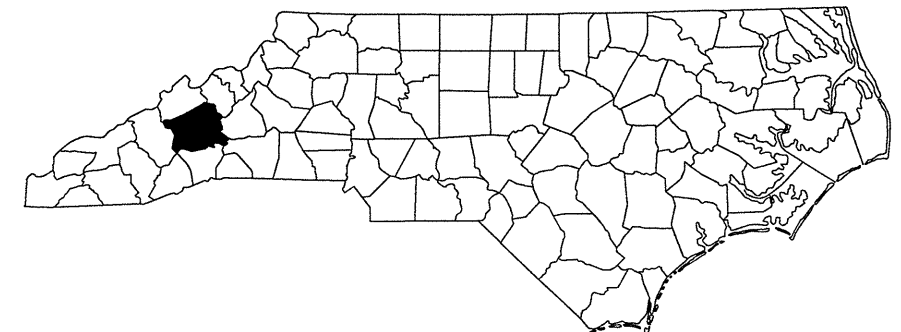
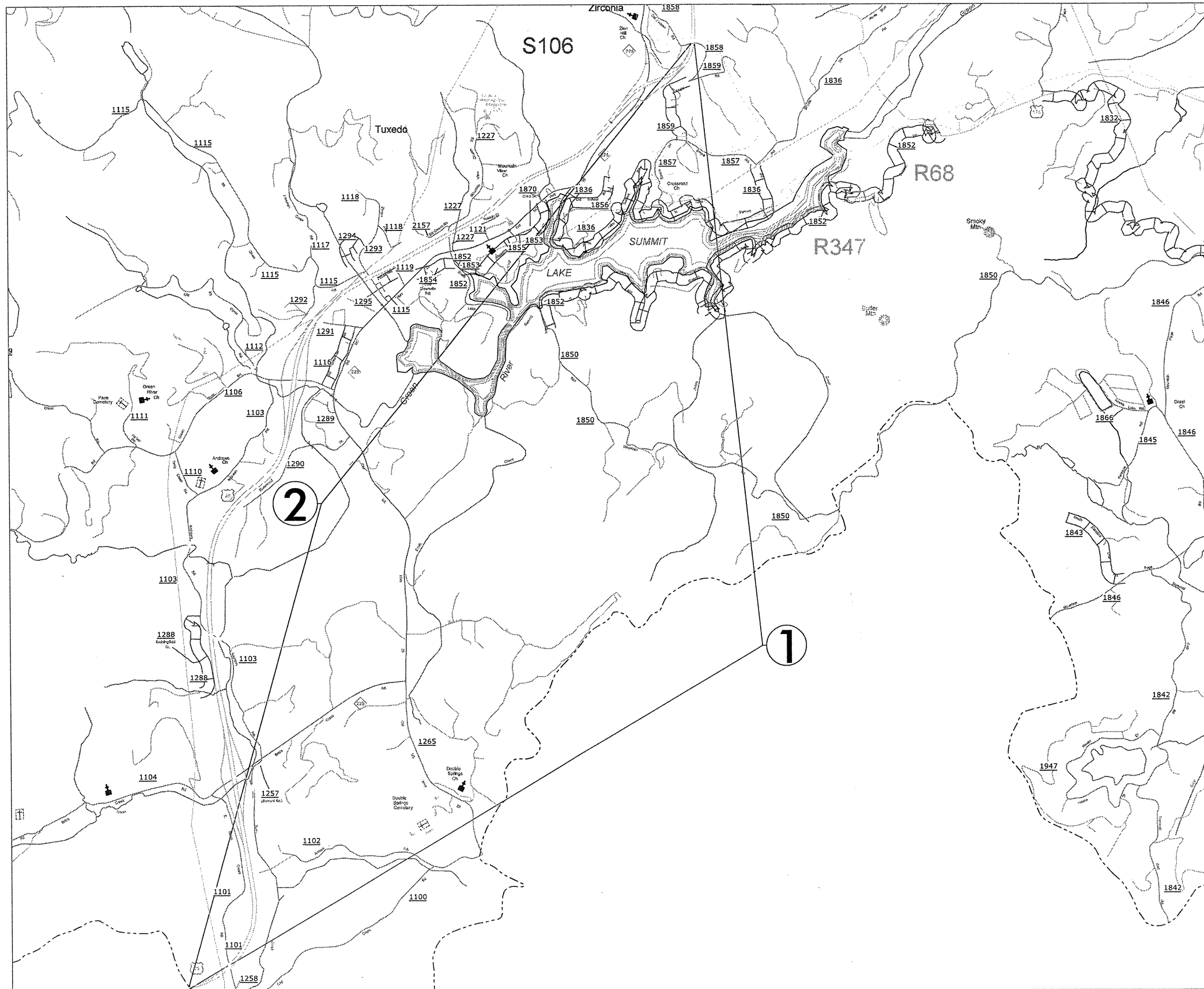


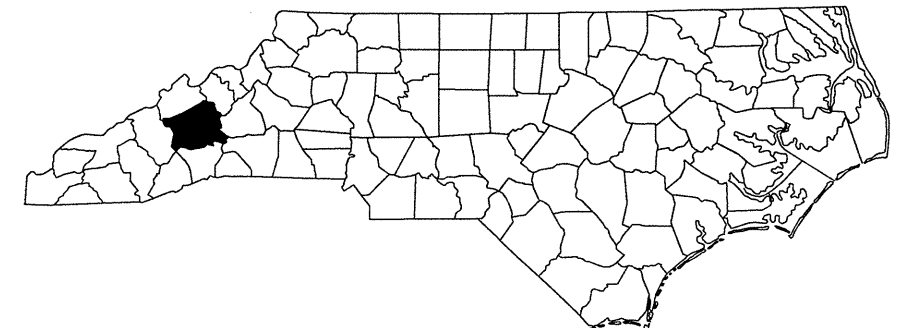
HENDERSON COUNTY

PROJECT REFERENCE NO.		SHEET NO.
14CR.10451.5, E1 C.		1 OF 8
STATE PROJECT	F.A. PROJECT NO.	DESCRIPTION



HENDERSON COUNTY

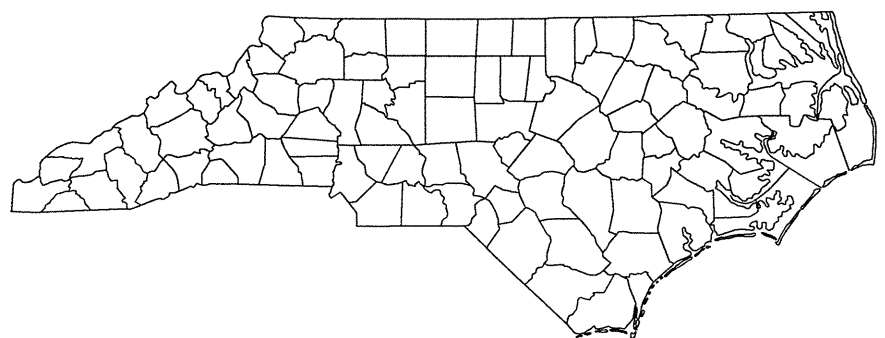
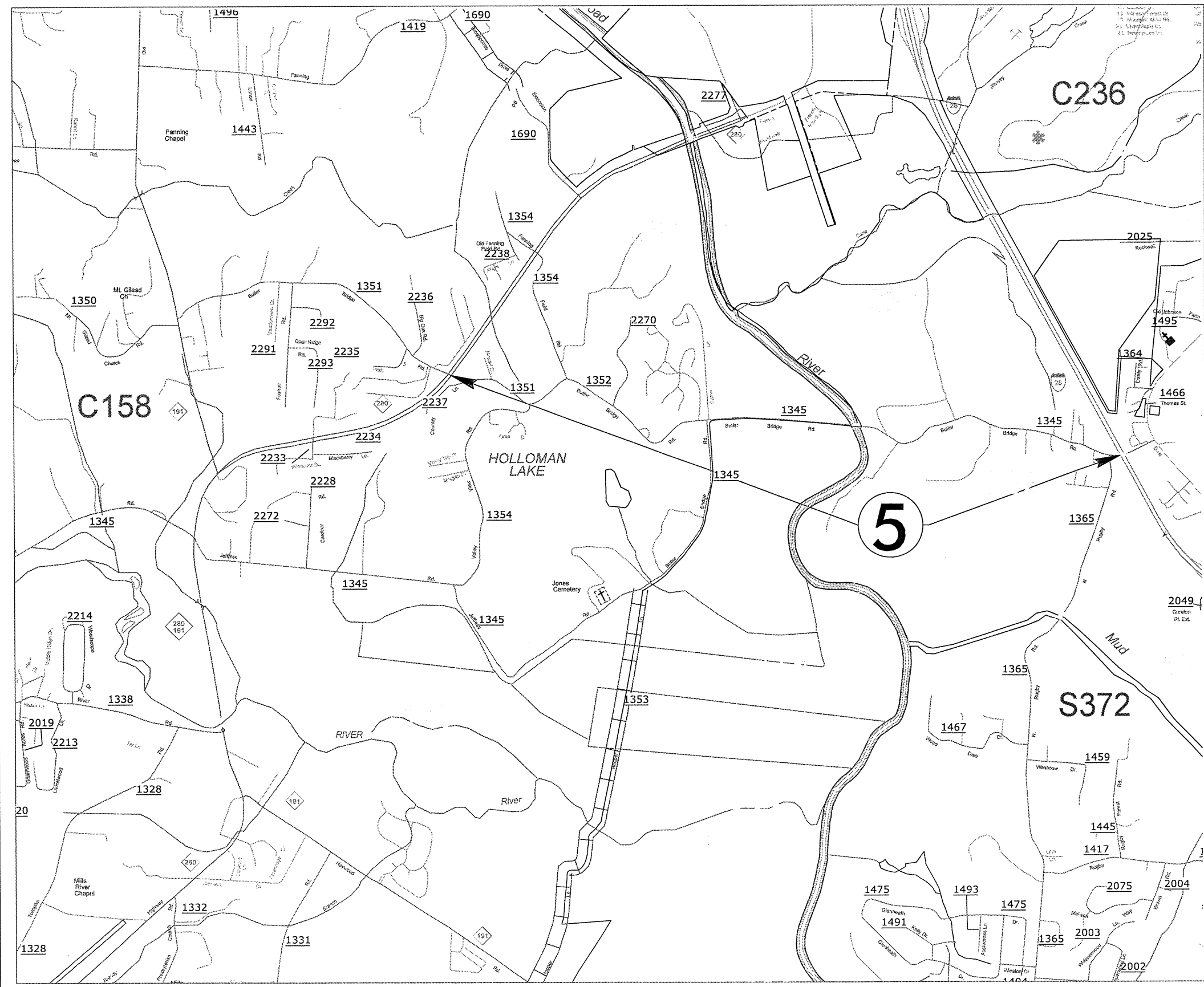
PROJECT REFERENCE NO.		SHEET NO.
14CR.10451.5, ETC.		2 OF 8
STATE PROJECT	F.A. PROJECT NO.	DESCRIPTION



*****SYTIME*****
 *****DGN*****
 *****\$\$\$\$

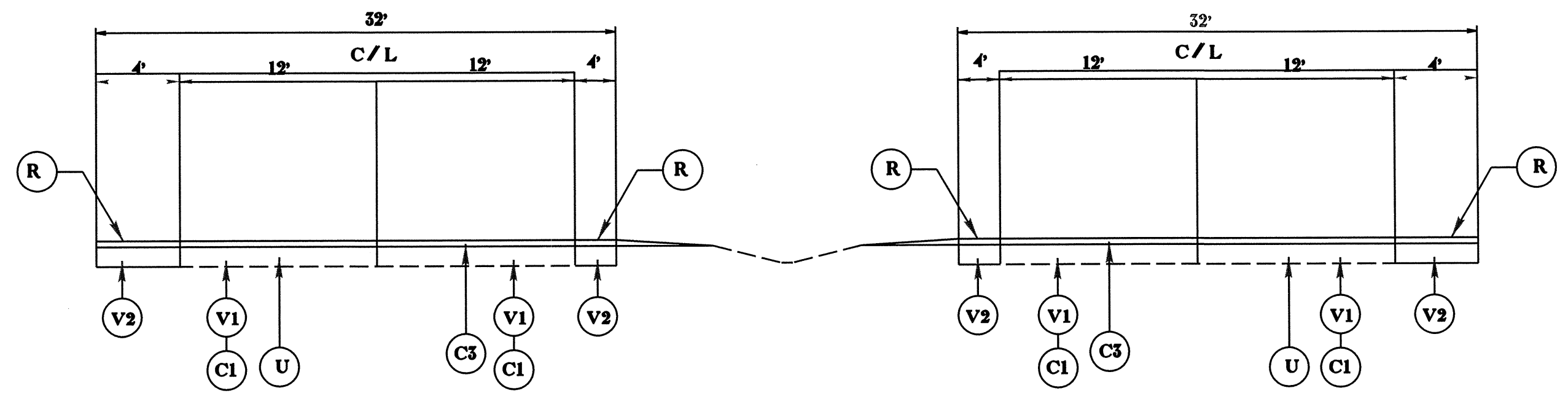
HENDERSON COUNTY

PROJECT REFERENCE NO.		SHEET NO.
14CR10451.5, ETC.		3 OF 8
STATE PROJECT	F.A. PROJECT NO.	DESCRIPTION

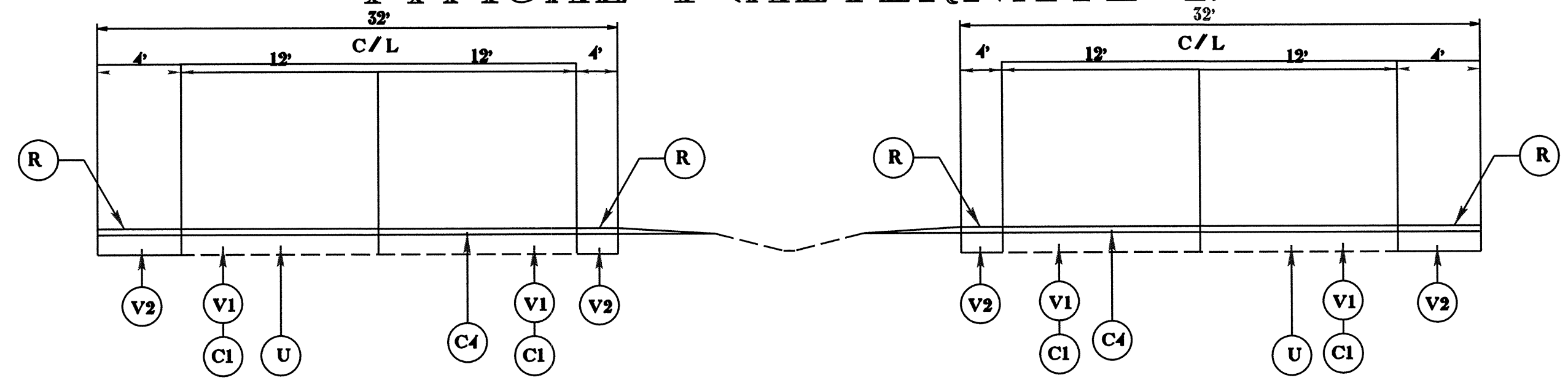


PROJECT REFERENCE NO.		SHEET NO.	
14CR.10451.5		4 OF 8	
STATE PROJECT	F.A. PROJECT NO.	DESCRIPTION	
14CR.10451.5			

TYPICAL 1 (ALTERNATE 1)



TYPICAL 1 (ALTERNATE 2)



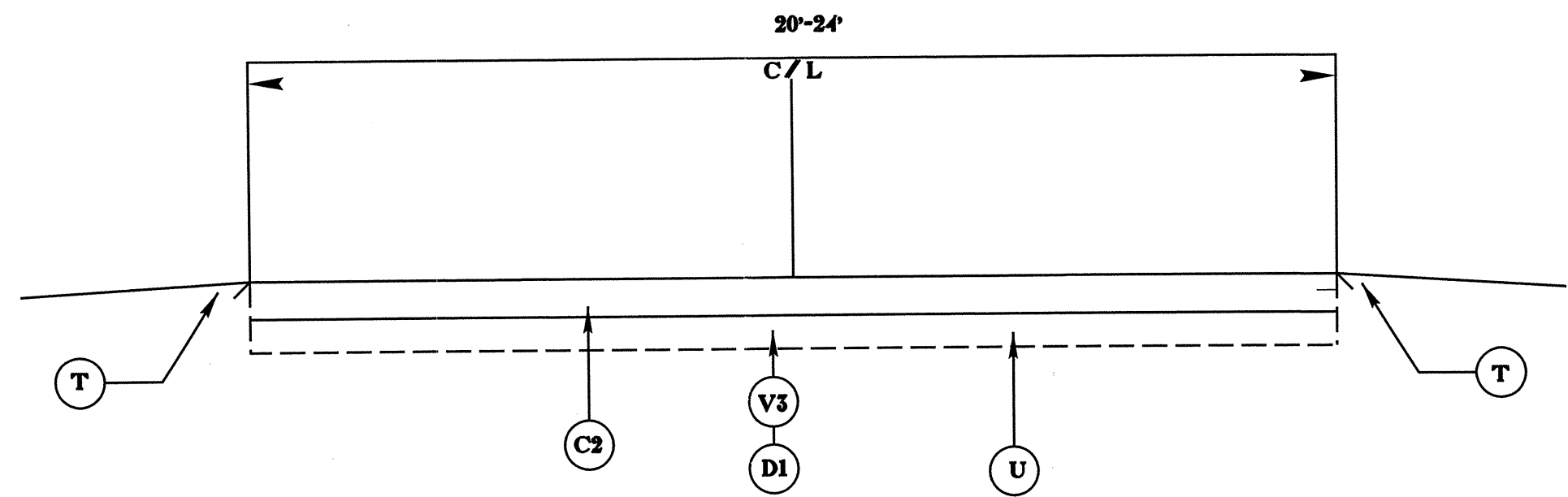
Note: Surface quantities and 1 / 2" milling for ramps and tapers are included to the beginning of gore areas.

050197

PROJECT REFERENCE NO.		SHEET NO.
		5 OF 8
STATE PROJECT	F.A. PROJECT NO.	DESCRIPTION

14CR.10451.5, ETC.

TYPICAL 2



050197

PROJECT REFERENCE NO.		SHEET NO.
14CR.10451.5		6 OF 8
STATE PROJECT	F.A. PROJECT NO.	DESCRIPTION
14CR.10451.4		

SURFACING SCHEDULE

ITEM NO	DESCRIPTION
C1	ASPHALT CONCRETE SURFACE COURSE, TYPE S9.5C, AT AN AVERAGE RATE OF 168 LBS. PER SQ. YD (1 1/2").
C2	ASPHALT CONCRETE SURFACE COURSE, TYPE S9.5B, AT AN AVERAGE RATE OF 168 LBS. PER SQ. YD (1 1/2").
C3	OPEN GRADE FRICTION COURSE -FC1 MODIFIED, AT AN AVERAGE RATE OF 70 LBS PER SQ. YD. (5/8")
C4	ULTRA-THIN BONDED WEARING COURSE, AT AN AVERAGE RATE OF 70 LBS PER SQ. YD. (5/8")
D1	ASPHALT CONCRETE INTERMEDIATE COURSE, TYPE I19.0B, AT AN AVERAGE RATE OF 342 LBS. PER SQ. YD (3").
V1	MILLING ASPHALT PAVEMENT 2" IN DEPTH AS DIRECTED BY PROJECT ENGINEER
V2	MILLING ASPHALT PAVEMENT 1/2" IN DEPTH ON THE SHOULDERS AS DIRECTED BY PROJECT ENGINEER
V3	MILLING ASPHALT PAVEMENT 3" IN DEPTH AS DIRECTED BY PROJECT ENGINEER
R	MILLED RUMBLE STRIPS.
T	SHOULDER RECONSTRUCTION SEE SPECIAL PROVISIONS.
U	EXISTING PAVEMENT

PROJECT NO.	SHEET NO.	TOTAL NO.
14CR.10451.5, 14CR.20451.11	7	8

SUMMARY OF QUANTITIES

PROJECT NO	COUNTY	MAP NO	ROUTE	DESCRIPTION	TYP NO	FINAL SURFACE TESTING REQUIRED	LENGTH MI	WIDTH FT	SHOULDER RECONSTRUCTION SMI	2" MILLING SY	1/2" MILLING SY	3" MILLING SY	INTERMEDIATE COURSE, I19.0B TONS	SURFACE COURSE, S9.5B TONS	SURFACE COURSE, S9.5C TONS	ASPHALT BINDER FOR PLANT MIX TONS	MILLED RUMBLE STRIPS (ASPHALT CEMENT CONCRETE) LF	ADJ. OF DROP INLET EA	ADJ. OF METER OR VALVE BOX EA
14CR.10451.5	Henderson	1	US 25 NORTH	FROM SC STATE LINE TO SR-1858	1	NO	5.8	32		81,664	28,811				7,321	432	61,248		
		2	US 25 SOUTH	FROM SC STATE LINE TO SR-1858	1	NO	5.8	32		81,664	28,811				7,321	432	61,248		
TOTAL FOR PROJ NO. 14CR.10451.5							11.6			163,328	57,622				14,642	864	122,496		
14CR.20451.11	Henderson	3	SR-1503	FROM SR-1006 TO R/R TRACKS	2	NO	2.82	22	5.64			14,922	2,552	3,365		324			4
		4	SR-1734	FROM SR-1783 TO SR-1897	2	NO	4.3	20	8.60			22,703	3,883	4,747		471		1	2
		5	SR-1345	FROM BRIDGE OVER I-26 TO NC-280	2	NO	2.54	24	5.08			10,728	1,835	3,310		287			
TOTAL FOR PROJ NO. 14CR.20451.11							9.66		19.32			48,353	8,270	11,422		1,082		1	6
GRAND TOTAL							21.26		19.32	163,328	57,622	48,353	8,270	11,422	14,642	1,946	122,496	1	6

SUMMARY OF QUANTITIES (ALTERNATE 1)

PROJECT NO	COUNTY	MAP NO	ROUTE	DESCRIPTION	TYP NO	FINAL SURFACE TESTING REQUIRED	LENGTH MI	WIDTH FT	POLYMER MODIFIED ASPHALT BINDER FOR PLANT MIX TONS	OGAFC, TYPE FC-1 MOD TONS
14CR.10451.5	Henderson	1	US 25 NORTH	FROM SC STATE LINE TO SR-1858	1	NO	5.8	32	270	4,428
		2	US 25 SOUTH	FROM SC STATE LINE TO SR 1858	1	NO	5.8	32	270	4,428
TOTAL FOR PROJ NO. 14CR.10451.5							11.6		540	8,856
GRAND TOTAL							11.6		540	8,856

SUMMARY OF QUANTITIES (ALTERNATE 2)

PROJECT NO	COUNTY	MAP NO	ROUTE	DESCRIPTION	TYP NO	FINAL SURFACE TESTING REQUIRED	LENGTH MI	WIDTH FT	POLYMER MODIFIED ASPHALT BINDER FOR PLANT MIX TONS	ULTRATHIN HOT MIX, TYPE B TONS	APPLICATION OF ULTRATHIN HOT MIX SY
14CR.10451.5	Henderson	1	US 25 NORTH	FROM SC STATE LINE TO SR-1858	1	NO	5.8	32	230	4,428	119,200
		2	US 25 SOUTH	FROM SC STATE LINE TO SR 1858	1	NO	5.8	32	230	4,428	119,200
TOTAL FOR PROJ NO. 14CR.10451.5							11.6		460	8,856	238,400
GRAND TOTAL							11.6		460	8,856	238,400

PROJECT NO.	SHEET NO.	TOTAL NO.
14CR.10451.5, 14CR.20451.11	8	8

THERMOPLASTIC AND PAINT QUANTITIES

PROJECT NO	COUNTY	MAP NO	ROUTE	DESCRIPTION	LENGTH	WIDTH	4400000000-E	4405000000-E	4415000000-N	4420000000-N	4430000000-N	4480000000-N	4516000000-N	4685000000-E		4686000000-E	4697000000-E
							STATIONARY WORK ZONE SIGN SF	PORTABLE WORK ZONE SIGN SF	FLASHING ARROW PANEL, C EA	CHANGEABLE MESSAGE SIGN EA	DRUMS EA	TMIA EA	SKINNY DRUMS EA	4" X 90 M WHITE THERMO LF	4" X 90 M YELLOW THERMO LF	4" X 120 M WHITE THERMO LF	8" X 120 M WHITE THERMO LF
14CR.10451.5	Henderson	1	US 25 NORTH	FROM SC STATE LINE TO SR-1858	5.8	32	192	256	2.0	2.0	80	2.0	525.0	31,784	30,624	7,656	2,320
		2	US 25 SOUTH	FROM SC STATE LINE TO SR-1858	5.8	32								31,784	30,624	7,656	2,320
TOTAL FOR PROJ NO. 14CR.10451.5					11.6		192	256	2	2	80	2	525	63,568	61,248	15,312	4,640
														124,816			
14CR.20451.11	Henderson	3	SR-1503	FROM SR-1006 TO R/R TRACKS	2.82	22											
		4	SR-1734	FROM SR-1783 TO SR-1897	4.3	20											
		5	SR-1345	FROM BRIDGE OVER I-26 TO NC-280	2.54	24											
TOTAL FOR PROJ NO. 14CR.20451.11					9.66												
GRAND TOTAL					21.26		192	256	2	2	80	2	525	63,568	61,248	15,312	4,640
														124,816			

PROJECT NO	COUNTY	MAP NO	ROUTE	DESCRIPTION	LENGTH	WIDTH	4725000000-E	4810000000-E		4820000000-E	4830000000-E	4835000000-E	4840000000-N		4845000000-N	4905000000-N		
							THERMO STR ARROW 90 M EA	4" WHITE PAINT LF	4" YELLOW PAINT LF	8" WHITE PAINT LF	16" WHITE PAINT LF	24" WHITE PAINT LF	PAINT MSG RXR EA	PAINT MSG SCHOOL EA	PAINT LT ARROW EA	CRYSTAL & RED SNOWPLOWABLE MARKERS EA	YELLOW & YELLOW SNOW PLOWABLE MARKERS EA	
14CR.10451.5	Henderson	1	US 25 NORTH	FROM SC STATE LINE TO SR-1858	5.8	32	9										383	
		2	US 25 SOUTH	FROM SC STATE LINE TO SR-1858	5.8	32											385	
TOTAL FOR PROJ NO. 14CR.10451.5					11.6		9										768	
														768				
14CR.20451.11	Henderson	3	SR-1503	FROM SR-1006 TO R/R TRACKS	2.82	22		60,686	59,558		240	256	6		14		195	
		4	SR-1734	FROM SR-1783 TO SR-1897	4.3	20		92,536	90,816			270		18			342	
		5	SR-1345	FROM BRIDGE OVER I-26 TO NC-280	2.54	24		54,661	53,650	60		244		18	16		175	
TOTAL FOR PROJ NO. 14CR.20451.11					9.66			207,883	204,024	60	240	770	6	36	30		712	
							411,907						42				712	
GRAND TOTAL					21.26		9	207,883	204,024	60	240	770	6	36	30		768	712
							411,907						42				1,480	