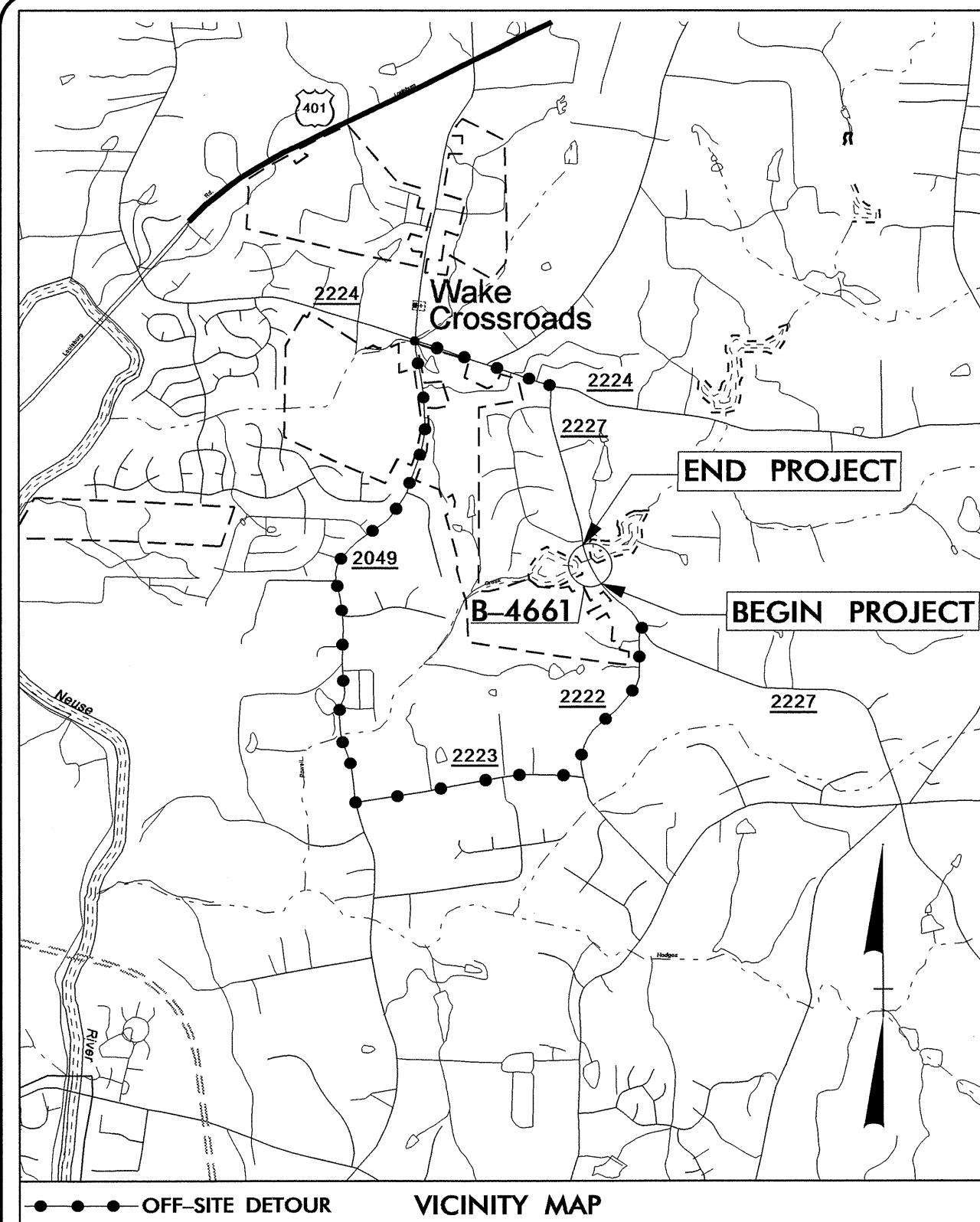


TIP PROJECT: B-4661

CONTRACT: C202751



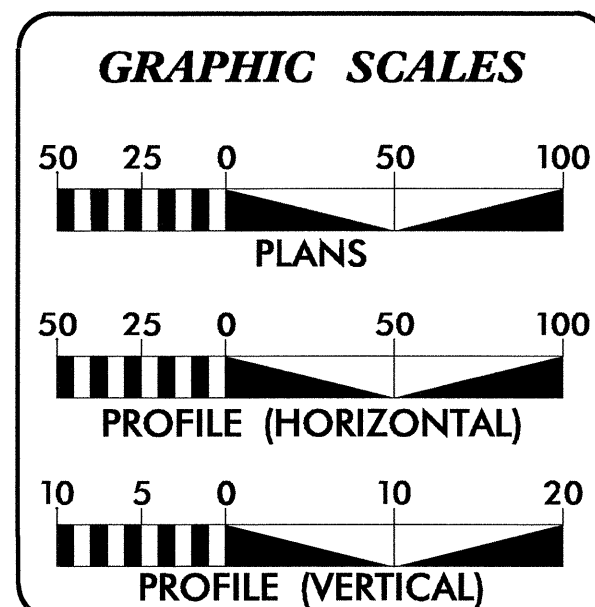
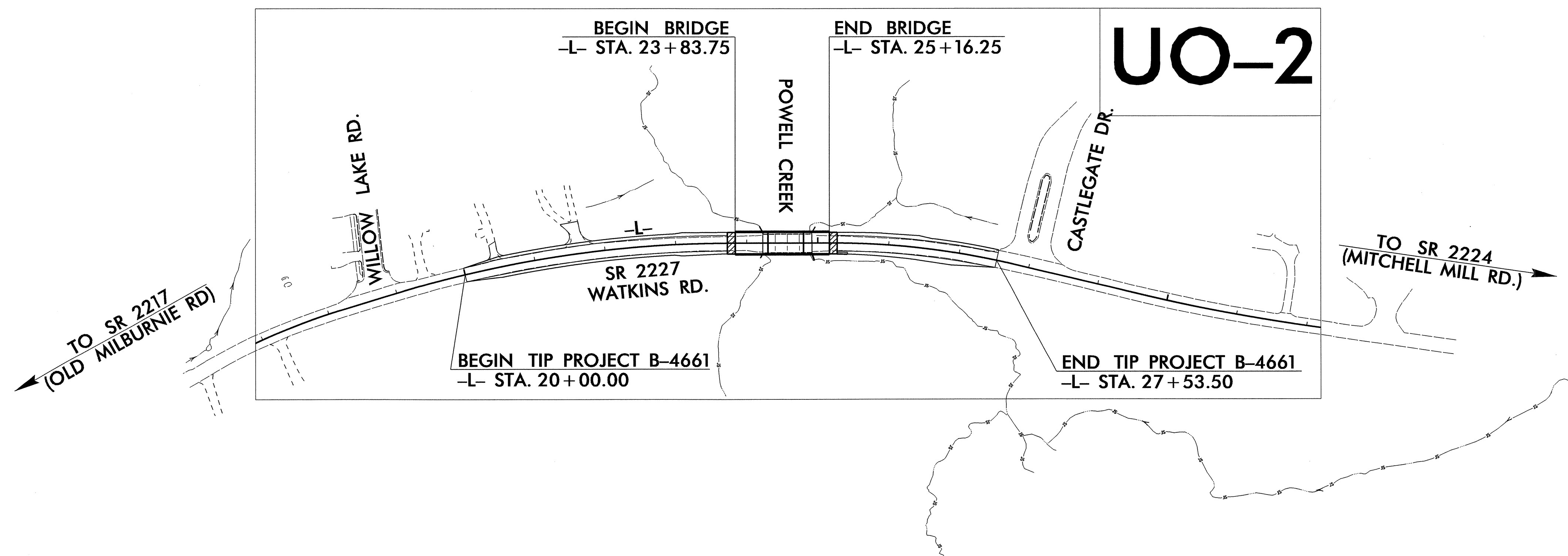
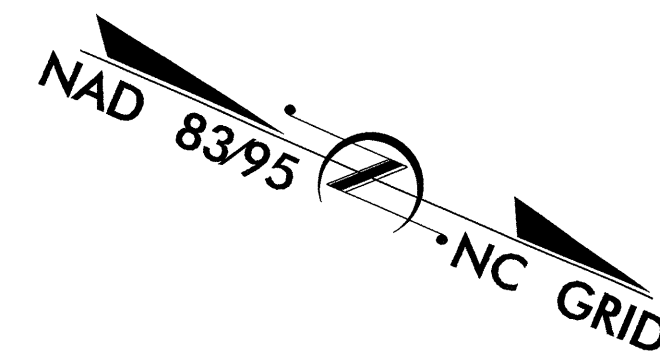
STATE OF NORTH CAROLINA
DIVISION OF HIGHWAYS

T.I.P. NO.	SHEET NO.
B-4661	UO-1

**UTILITIES BY OTHERS PLANS
WAKE COUNTY**

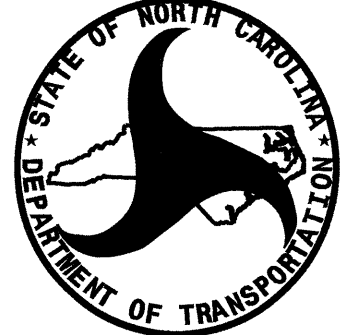
LOCATION: BRIDGE NO. 151 OVER POWELL CREEK ON SR 2227 (WATKINS ROAD) BETWEEN SR 2224 (MITCHELL MILL ROAD) AND SR 2217 (OLD MILBURNIE ROAD).

TYPE OF WORK: UTILITY CONSTRUCTION BY OTHERS



INDEX OF SHEETS	
SHEET NO.	DESCRIPTION
UO-1	TITLE SHEET
UO-2	UTILITY BY OTHERS PLAN SHEETS

UTILITY OWNERS ON PROJECT
(1) PROGRESS ENERGY - POWER
(2) AT&T - TELEPHONE
(3) TIME WARNER CABLE - TELEVISION



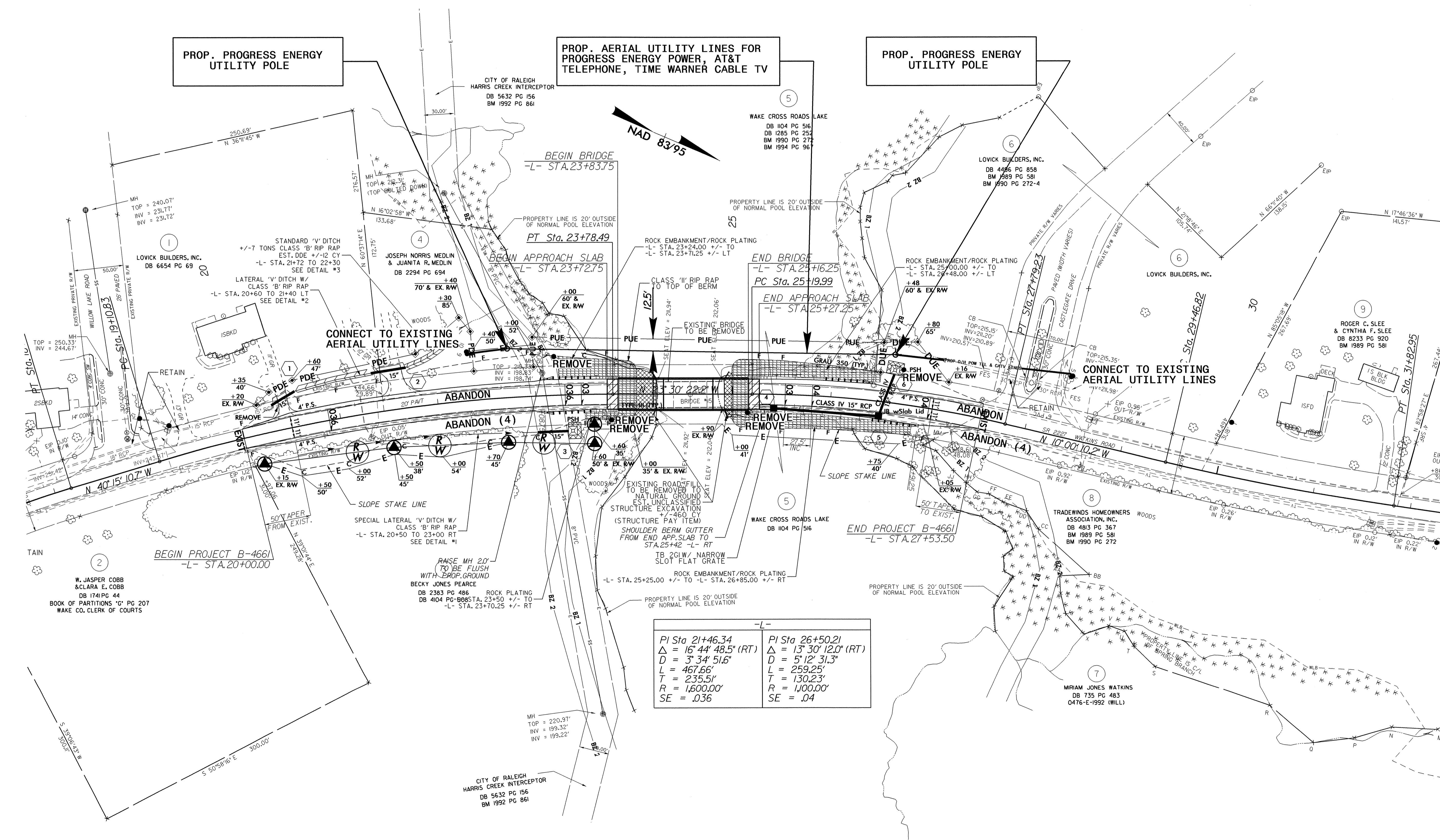
PREPARED IN THE OFFICE OF:
**DIVISION OF HIGHWAYS
UTILITIES ENGINEERING
SECTION**

1555 MAIL SERVICES CENTER
RALEIGH NC 27699-1555
PHONE (919) 707-6690
FAX (919) 250-4151

Roger Worthington, P.E.	UTILITIES SECTION ENGINEER
Steve McKee, P.E.	UTILITIES SQUAD LEADER PROJECT ENGINEER
Donald W. Proper	UTILITIES PROJECT DESIGNER

UTILITIES BY OTHERS

NOTE:
ALL PROPOSED UTILITY WORK
SHOWN ON THIS SHEET WILL
BE DONE BY OTHERS



PROP. PROGRESS ENERGY
UTILITY POLE

PROP. AERIAL UTILITY LINES FOR
PROGRESS ENERGY, AT&T
TELEPHONE, TIME WARNER CABLE TV

PROP. PROGRESS ENERGY
UTILITY POLE

-L-	
PI Sta 21+46.34	PI Sta 26+50.21
$\Delta = 16^{\circ} 44' 48.5" (RT)$	$\Delta = 13^{\circ} 30' 12.0" (RT)$
$D = 3^{\circ} 34' 51.6"$	$D = 5^{\circ} 12' 31.3"$
$L = 467.66'$	$L = 259.25'$
$T = 235.51'$	$T = 130.23'$
$R = 1,600.00'$	$R = 1,000.00'$
$SE = .036$	$SE = .04$