

09/08/99

See Sheet 1-A For Index of Sheets

T.I.P. NO.	SHEET NO.
B-4294	UO-1

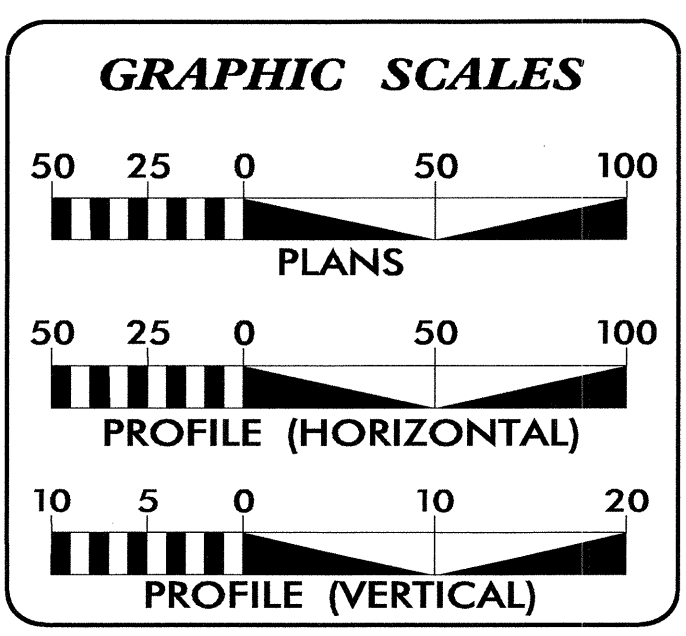
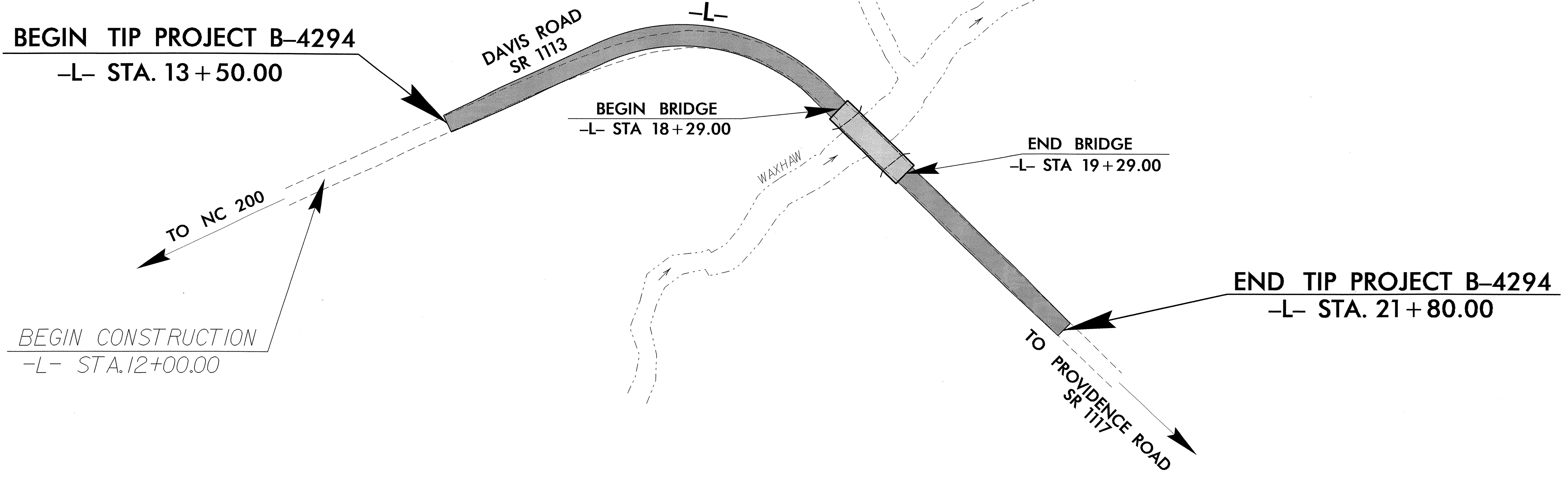
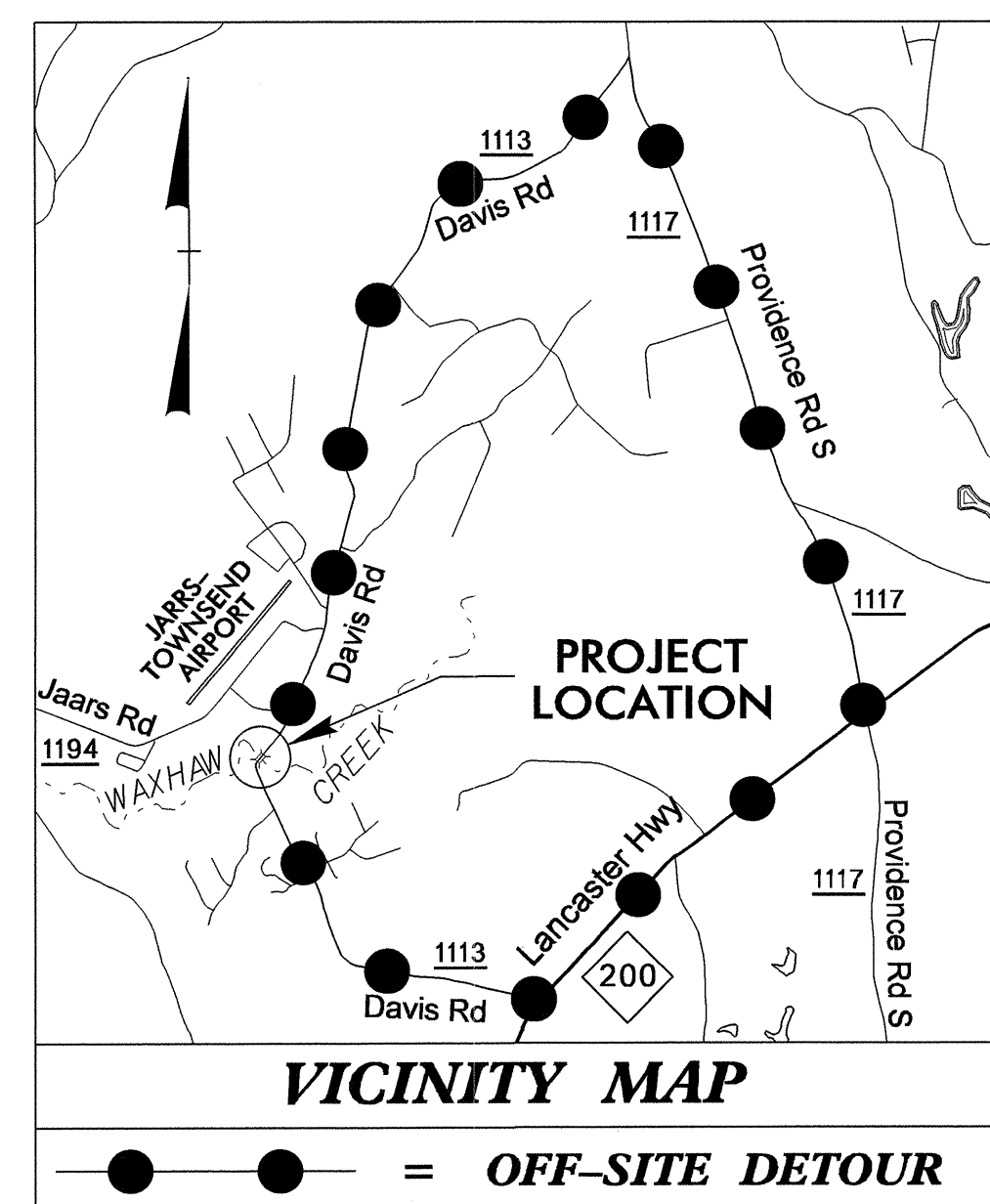
STATE OF NORTH CAROLINA
DIVISION OF HIGHWAYS

**UTILITIES BY OTHERS PLANS
UNION COUNTY**

**LOCATION: BRIDGE NO 184 OVER WAXHAW CREEK AND
APPROACHES ON SR 1113 (DAVIS ROAD)**

TYPE OF WORK: POWER AND TELEPHONE

TIP PROJECT: B-4294



INDEX OF SHEETS	
SHEET NO.	DESCRIPTION
UO-1	TITLE SHEET
UO-2	UTILIIES BY OTHERS PLAN SHEET

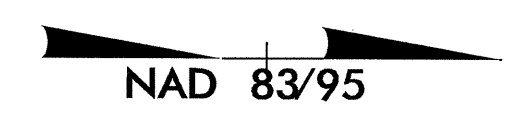
UTILITY OWNERS ON PROJECT
(1) Duke Energy Corporation
(2) Windstream Communications

	PREPARED IN THE OFFICE OF: DIVISION OF HIGHWAYS UTILITIES ENGINEERING SECTION
	1555 MAIL SERVICES CENTER RALEIGH NC 27699-1555 PHONE (919) 707-6690 FAX (919) 250-4151
Roger Worthington, P.E.	UTILITIES SECTION ENGINEER
Carl Barclay, P.E.	UTILITIES SQUAD LEADER PROJECT ENGINEER
Bo Hemphill, P.E.	UTILITIES PROJECT DESIGNER

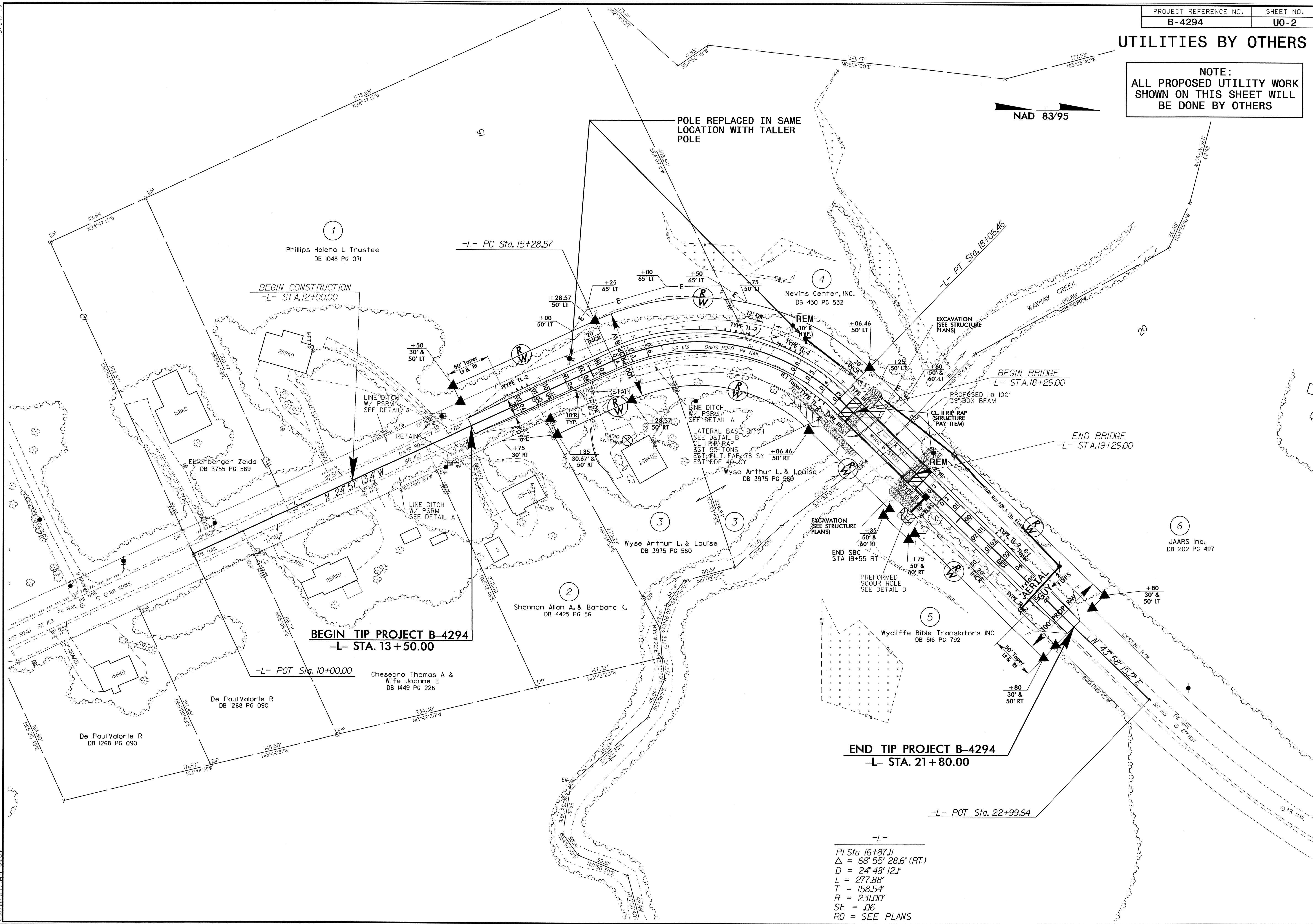
02-AUG-2011 10:47
 R:\u0001\p0001\proj\4294\ut_title_uo01_psh.dgn
 \$\$\$USERNAME\$\$\$

UTILITIES BY OTHERS

NOTE:
ALL PROPOSED UTILITY WORK
SHOWN ON THIS SHEET WILL
BE DONE BY OTHERS



5/14/95
02-AUG-2011 11:45
R:\N\111166\Road\U0\N\B-4294-ut_04-uo02_psh.dgn



-L-
 PI Sta 16+87.11
 $\Delta = 68' 55' 28.6''$ (RT)
 $D = 24' 48' 12.1''$
 $L = 277.88'$
 $T = 158.54'$
 $R = 231.00'$
 $SE = .06$
 $RO = \text{SEE PLANS}$