

T.I.P. NO.	SHEET NO.
U-3812	UC-1

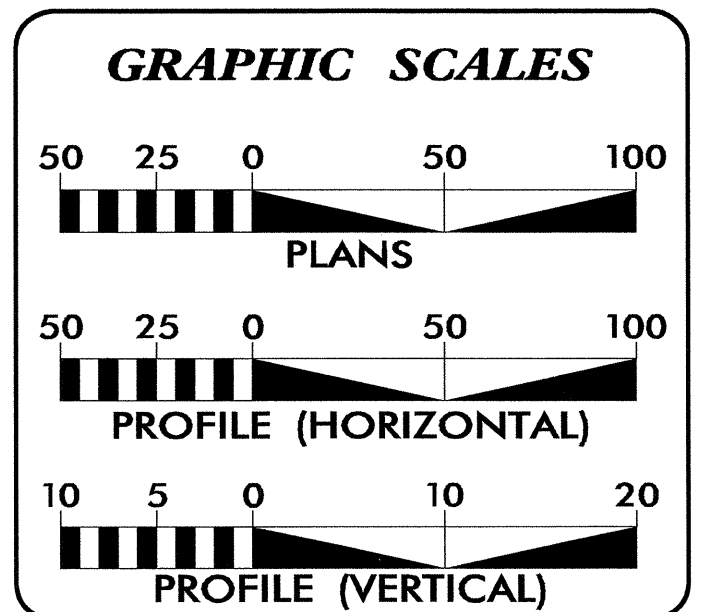
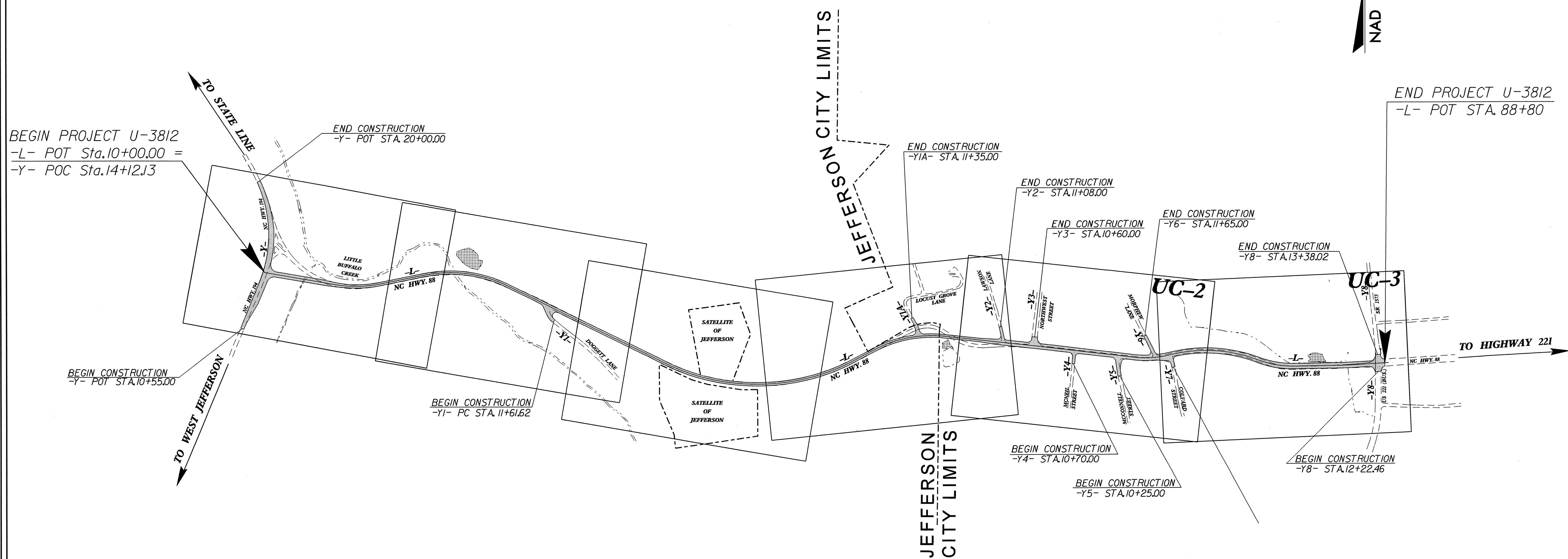
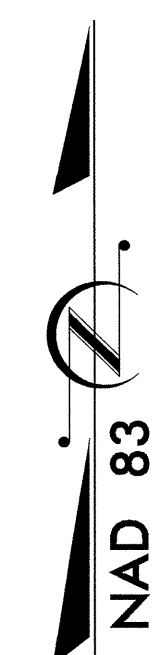
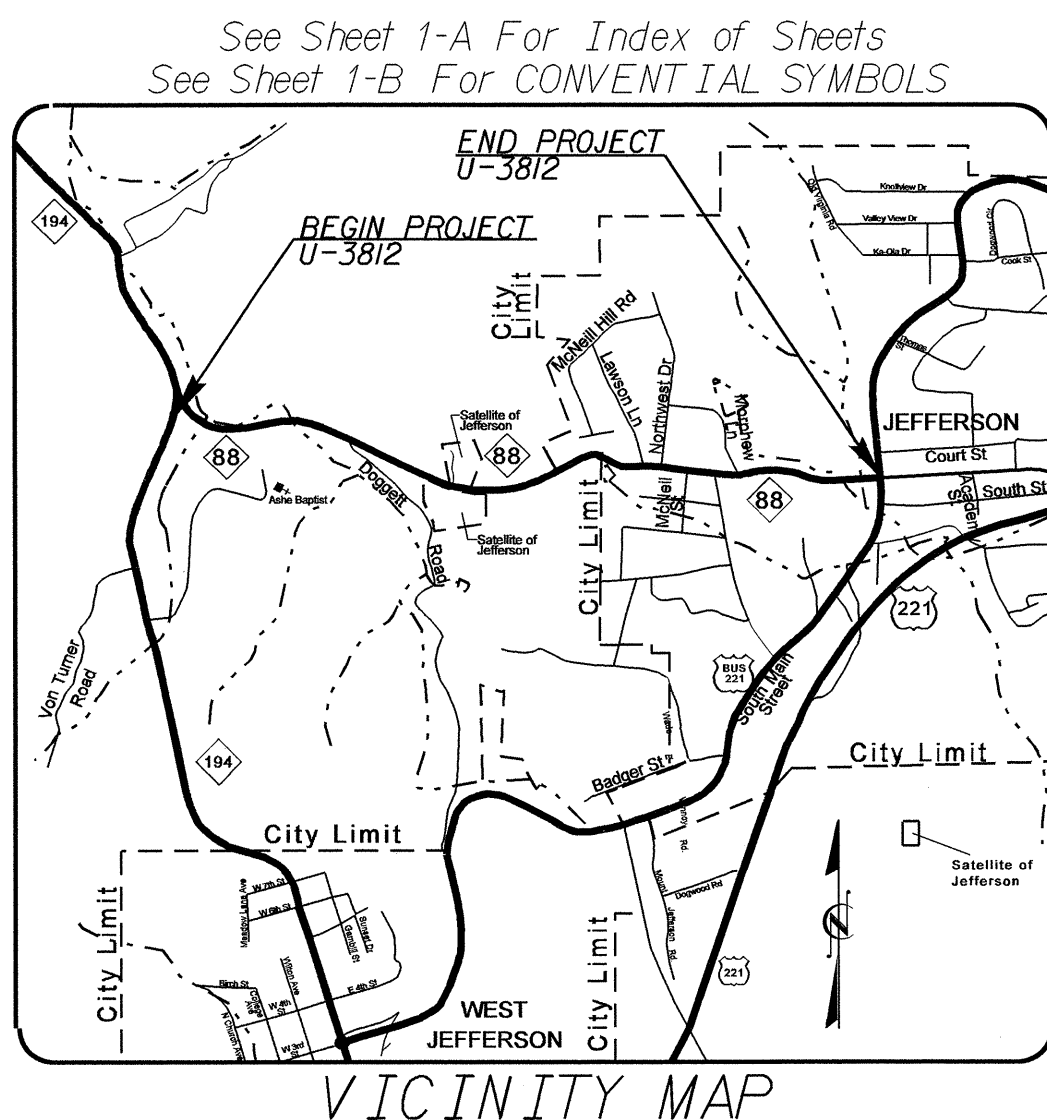
STATE OF NORTH CAROLINA
DIVISION OF HIGHWAYS

**UTILITY CONSTRUCTION PLANS
ASHE COUNTY**

**LOCATION: NC 88 (WEST MAIN ST.) FROM NC 194
TO US BUSINESS (SOUTH MAIN ST)**

TYPE OF WORK: WATER AND SEWER LINE RELOCATION

TIP PROJECT: U-3812

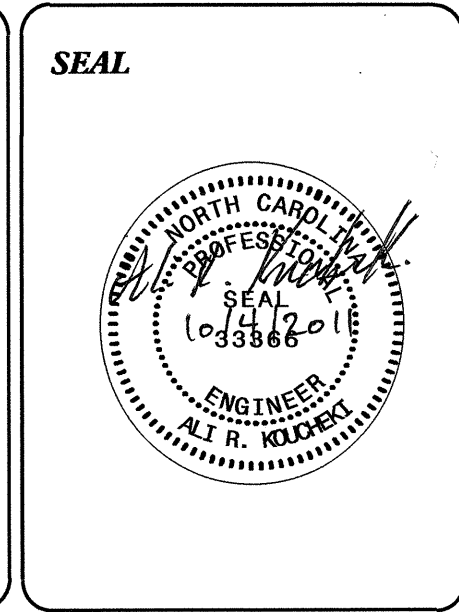


INDEX OF SHEETS

SHEET NO.	DESCRIPTION
UC-1	TITLE SHEET
UC-2 THRU UC-3	UTILITY CONSTRUCTION PLAN SHEETS
UC-4	PROFILE SHEET
UC-5	DETAILS SHEET

WATER AND SEWER OWNERS ON PROJECT

(1) WATER TOWN OF JEFFERSON
(2) SANITARY SEWER TOWN OF JEFFERSON



PREPARED IN THE OFFICE OF:
**DIVISION OF HIGHWAYS
UTILITIES ENGINEERING
SECTION**

1591 MAIL SERVICES CENTER
RALEIGH NC 27699-1591
PHONE (919) 250-4128
FAX (919) 250-4119

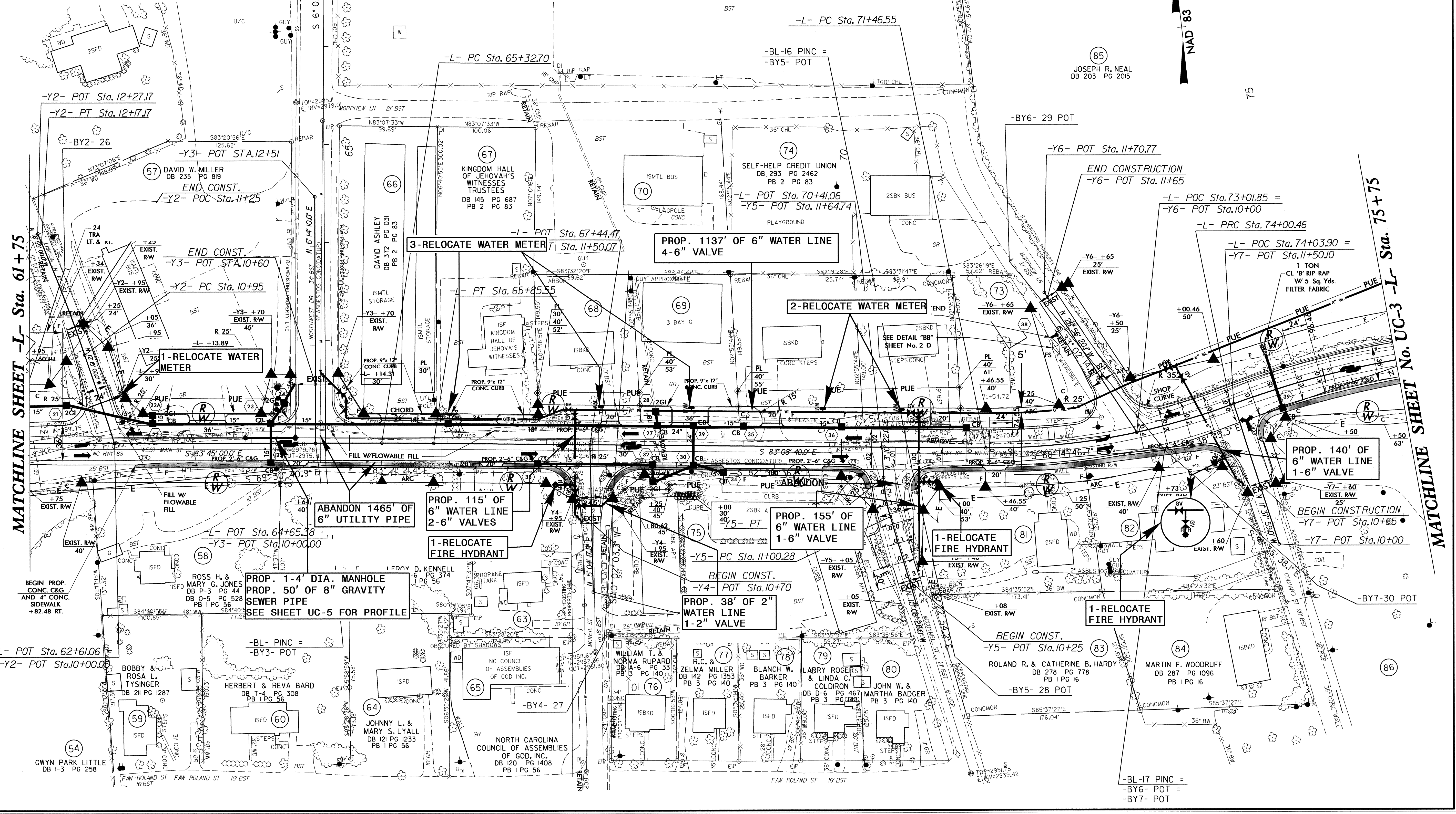
Roger Worthington, P.E. UTILITIES SECTION ENGINEER
Carl Barclay, P.E. UTILITIES SQUAD LEADER PROJECT ENGINEER
Ali Kouchehi, PE UTILITIES PROJECT DESIGNER

04-OC1-201108439
P:\Utilities\Proj\U3812_rdy_tsh.dgn
\$\$\$\$\$USERNAME\$\$\$\$\$

UTILITY CONSTRUCTION

PROPERTY OWNERS			
62	JEFFERY E. MAYNOR TERRI B. MAYNOR DB 323 PG 2124 PB 1 PG 56	72	SAMUEL GUTIERREZ & ELIDA GUTIERREZ DB 356 PG 1940 PB 2 PG 83
63	NELSE L. & INA HIMELRIGHT OSBORNE DB 245 PG 981 PB 1 PG 56	73	ERNIE CARPENTER & DAVID BARR DB 277 PG 1491 PB 2 PG 83
68	JOHN WILLIAM & MARY ELIZABETH ROTEN, ETAL DB 279 PG 41 PB 2 PG 83	75	BETTY C. CROWDER DB 148 PG 473 PB 3 PG 140
69	CONLEY W. SHEPHERD & MICHAEL L. SHEPHERD DB 399 PG 1758 PB 2 PG 83	81	AMANDA K. BARKER L/E DB 254 PG 1050 PB 1 PG 16
70	ROBERT G. & DEBRA E. POE, ET AL DB 197 PG 2459 PB 2 PG 83	82	PHYLLIS JANET NEAVES ESTATE DB 167 PG 2169 PB 1 PG 16 07 E 287
71	PRISCILLA L. NORRIS & CLAYTON E. NORRIS DB 378 PG 1603 PB 2 PG 83	86	NEW RIVER BEHAVIORAL HEALTHCARE PREVENTION FOUNDATION DB 270 PG 135 PB 1 PG 16

-L-		
PI Sta 65+59.12 Δ = 0° 36' 20.0" (RT) D = 1° 08' 45.3" L = 52.84' T = 26.42' R = 5,000.00'	PI Sta 72+4.91 Δ = 20° 47' 00.0" (LT) D = 8° 11' 06.4" L = 253.92' T = 128.37' R = 700.00'	PI Sta 77+09.24 Δ = 34° 19' 10.0" (RT) D = 5° 43' 46.5" L = 598.99' T = 308.78' R = 1,000.00'
-Y2-		
PI Sta 11+56.12 Δ = 4° 40' 00.0" (LT) D = 3° 49' 11.0" L = 122.17' T = 61.12' R = 1,500.00'	-Y3-	
PI Sta 10+61.47 Δ = 32° 57' 53.9" (RT) D = 45° 50' 11.8" L = 71.92' T = 36.99' R = 125.00'	PI Sta 11+20.70 Δ = 13° 18' 50" (RT) D = 32° 44' 25.6" L = 40.67' T = 20.42' R = 175.00'	



MATCHLINE SHEET -L- Sta. 61+75

MATCHLINE SHEET No. UC-3 -L- Sta. 75+75



04-0CT-2010(09)47
Utilities Engineering Section
U:\Projects\3812\rdy-ut-ps08.uc-2.dgn

PROPERTY OWNERS			
91	THOMAS D. & VICTORIA HERMAN DB 198 PG 2499 DB 119 PG 469	99	DARREL & DARLENE POE, RICHARD & MICHELLE HAMBY DB 256 PG 1517
92	JOHN CHRISTOPHER BARR ET AL DB 405 PG 1039	105	GEORGE TIMOTHY & SANDRA W. SHATLEY DB 251 PG 1259
93	E. TRUETT JR. & MAREA B. WEAVER DB K-5 PG 254	103	JEFFERSON UNITED METHODIST CHURCH TRUSTEES DB 283 PG 435 DB 84 PG 292 DB 163 PG 29 DB 84 PG 248

-L-

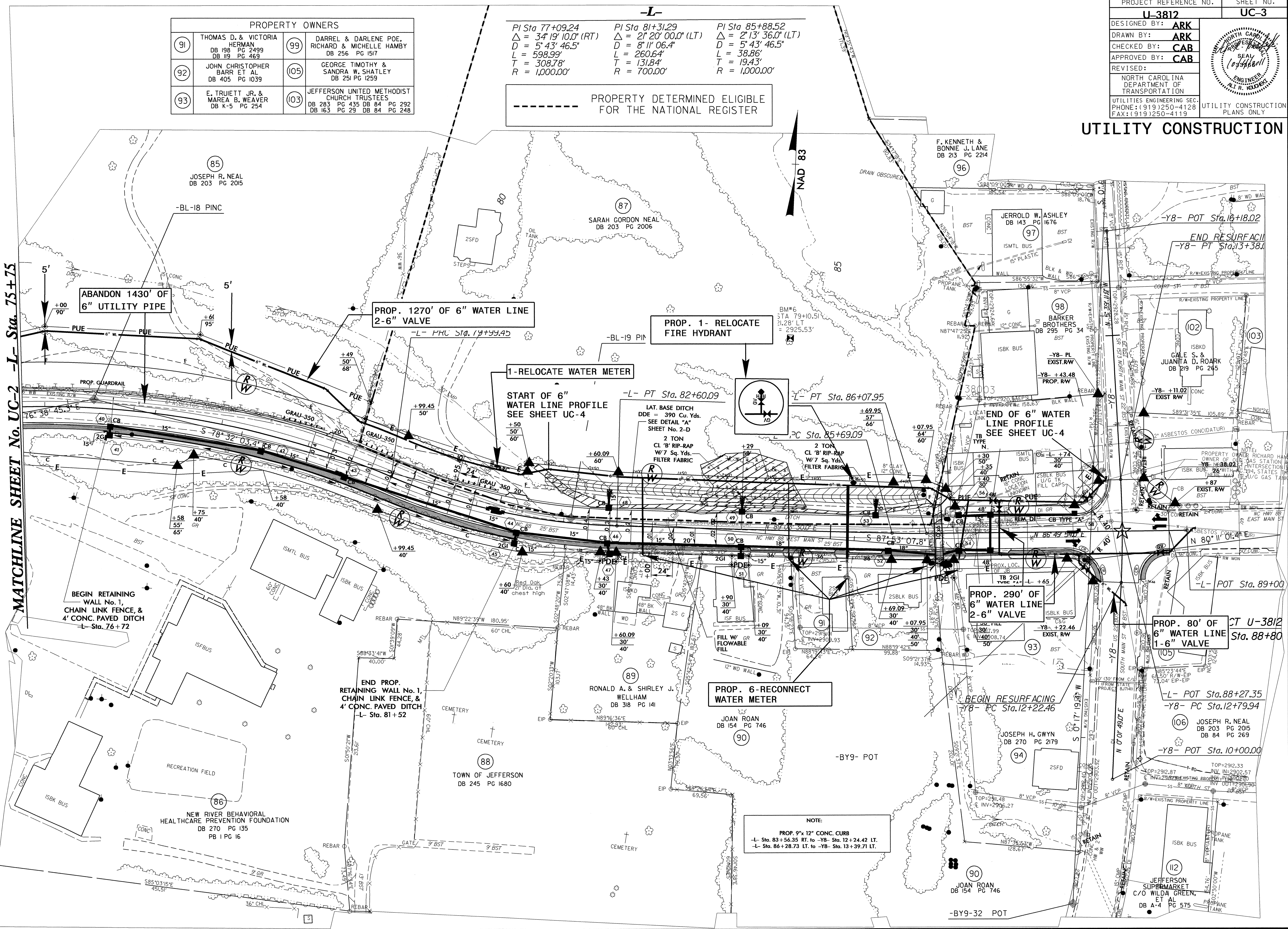
PI Sta 77+09.24 Δ = 34°19'10.0" (RT) D = 5°43'46.5" L = 598.99' T = 308.78' R = 1,000.00'	PI Sta 81+31.29 Δ = 21°20'00.0" (LT) D = 8°11'06.4" L = 260.64' T = 131.84' R = 700.00'	PI Sta 85+88.52 Δ = 2°13'36.0" (LT) D = 5°43'46.5" L = 38.86' T = 19.43' R = 1,000.00'
--	--	---

----- PROPERTY DETERMINED ELIGIBLE FOR THE NATIONAL REGISTER

UTILITY CONSTRUCTION

LETTER DATED JUNE 08, 2010 BY: S. MEADOWS
 1. Changed name and DBPG info from John Christopher Barr, DB 297 PG 2281, and DB 254 PG 1250 to John Christopher Barr, et.al, DB 405 PG 1039, Parcel No. 092.

MATCHLINE SHEET No. UC-2 -L- Sta. 75+75



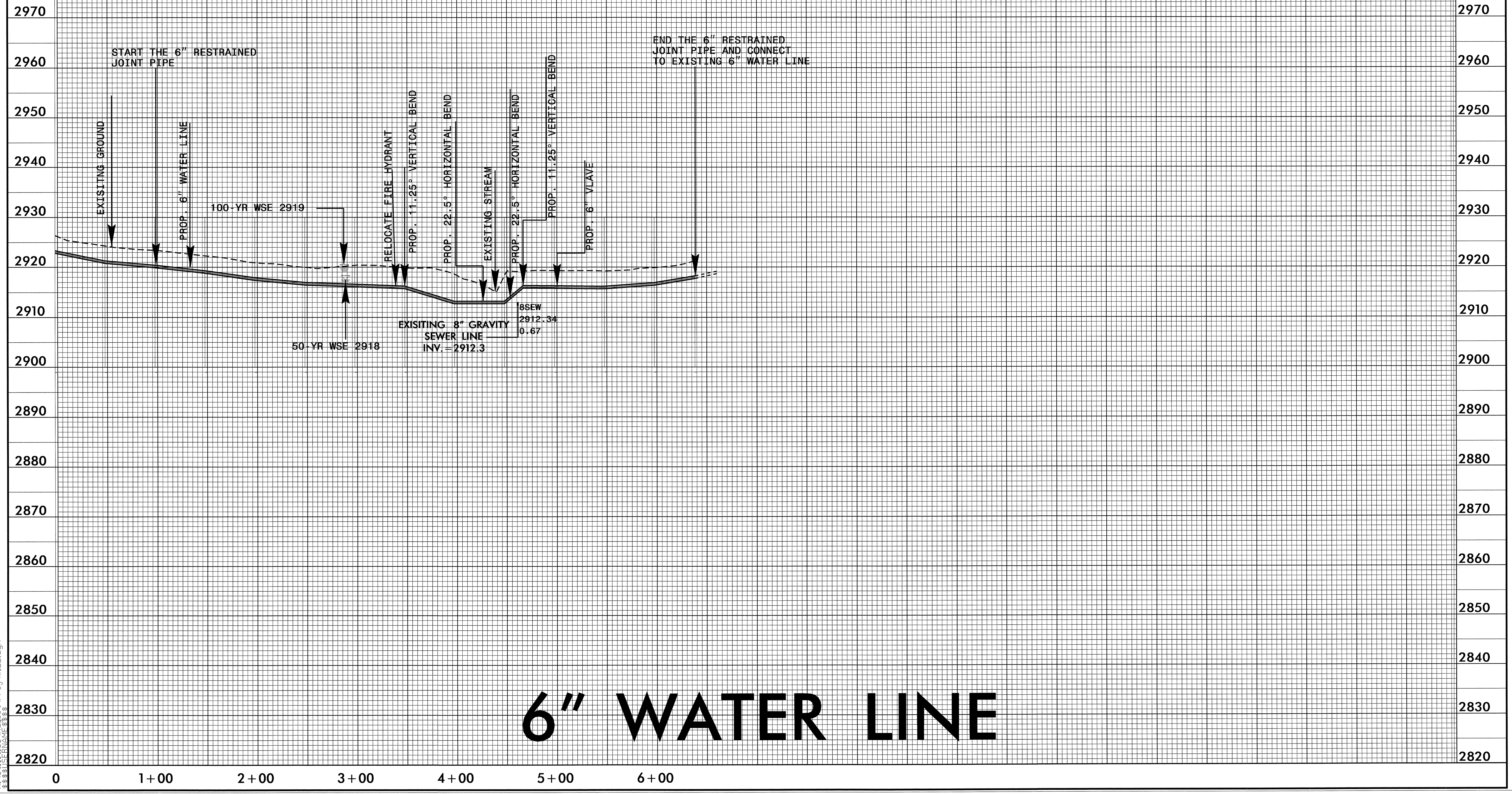
04-01-2011 10:24 u3812_rdy.ut.psh09.uc3.dgn
 \$\$\$\$\$\$
 \$\$\$\$\$\$

PROJECT REFERENCE NO.	SHEET NO.
U-3812	UC-4
DESIGNED BY: ARK	
DRAWN BY: ARK	
CHECKED BY: CAB	
APPROVED BY: CAB	
REVISED:	
NORTH CAROLINA DEPARTMENT OF TRANSPORTATION UTILITIES ENGINEERING SEC. PHONE: (919)250-4128 FAX: (919)250-4119	
UTILITY CONSTRUCTION PLANS ONLY	

UTILITY CONSTRUCTION

5/14/99

04-001-2011525
 44 Utilities/UC/UC-4
 443341122.dgn



6" WATER LINE

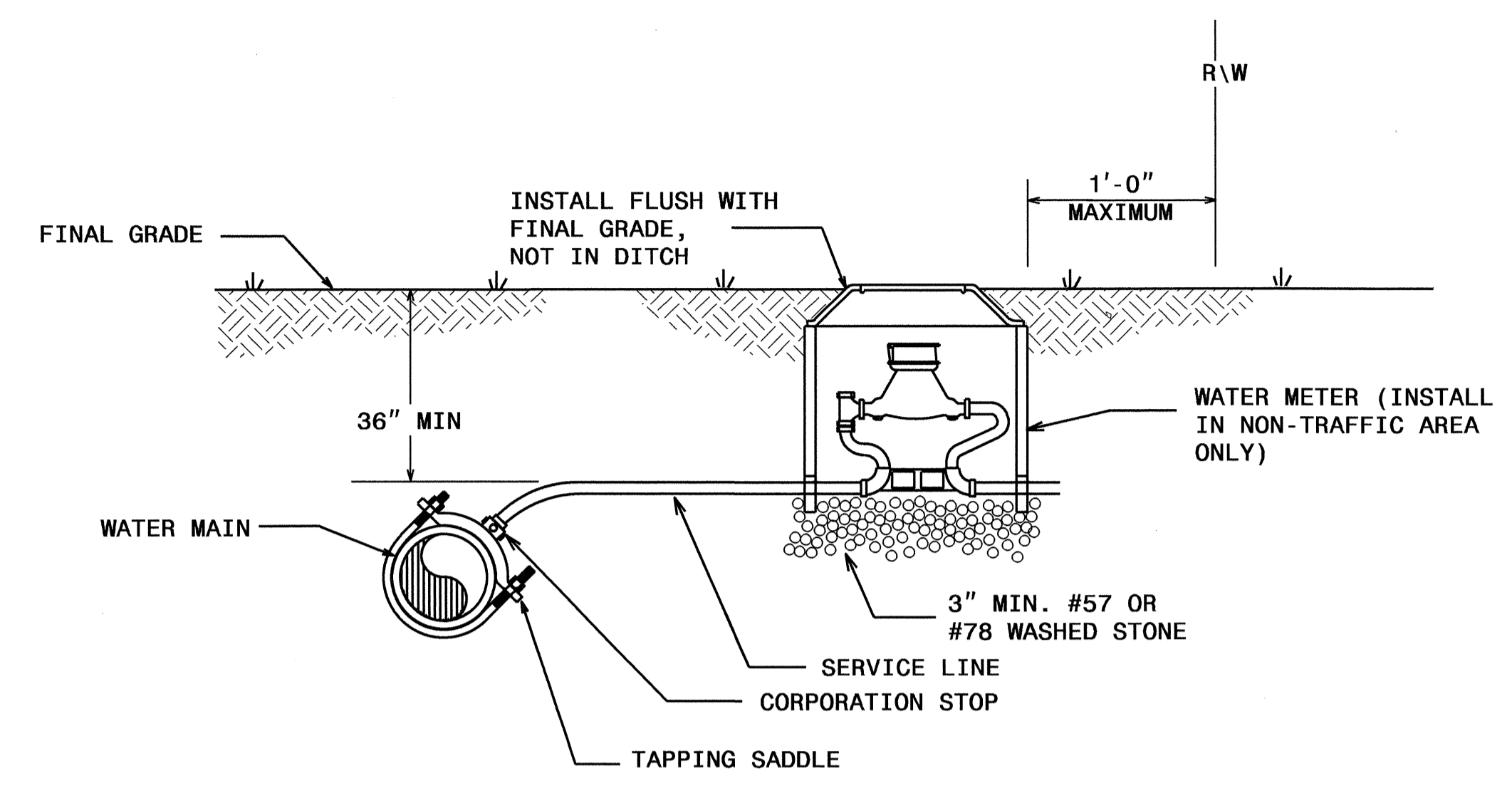
5/14/99

STATE OF NORTH CAROLINA
DEPT. OF TRANSPORTATION
DIVISION OF HIGHWAYS
RALEIGH, N.C.

1-12

ENGLISH STANDARD DRAWING FOR
WATER METER

SHEET 1 OF 1
1515.01



NOTES:
1. THIS DETAIL SHOWS THE TYPICAL FINAL WATER METER CONFIGURATION AFTER INSTALLATION OF A PROPOSED WATER METER, RECONNECTION OF AN EXISTING WATER METER, OR RELOCATION OF A WATER METER.

STATE OF NORTH CAROLINA
DEPT. OF TRANSPORTATION
DIVISION OF HIGHWAYS
RALEIGH, N.C.

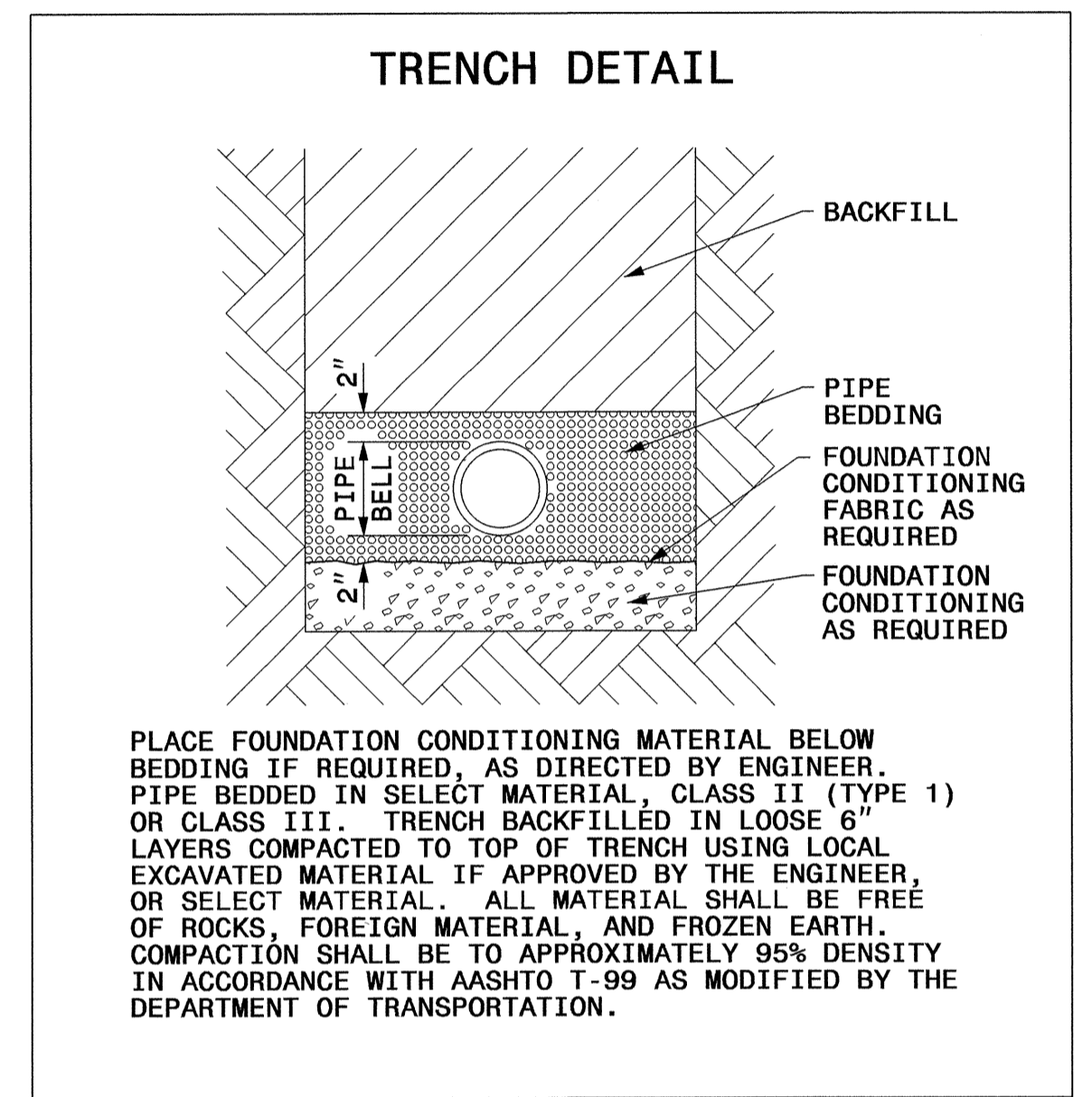
1-12

ENGLISH STANDARD DRAWING FOR
WATER METER

SHEET 1 OF 1
1515.01

MAXIMUM TRENCH WIDTH AT TOP OF PIPE

NOMINAL PIPE SIZE (INCHES)	TRENCH WIDTH (INCHES)	NOMINAL PIPE SIZE (INCHES)	TRENCH WIDTH (INCHES)
4	28	20	44
6	30	24	48
8	32	30	54
10	34	36	60
12	36	42	66
14	38	48	72
16	40	54	78
18	42		



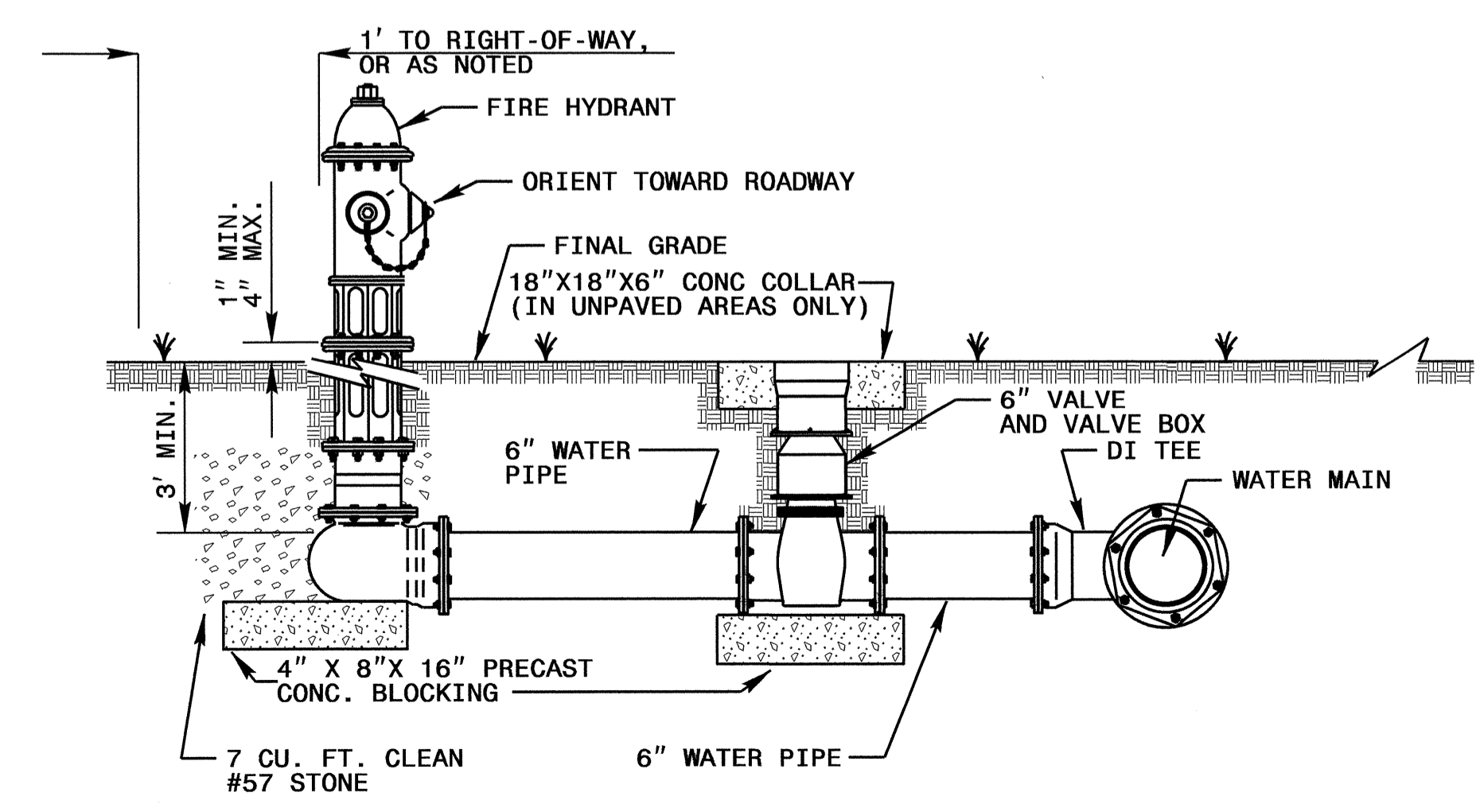
STATE OF NORTH CAROLINA
DEPT. OF TRANSPORTATION
DIVISION OF HIGHWAYS
RALEIGH, N.C.

1-12

ENGLISH STANDARD DRAWING FOR
FIRE HYDRANT

SHEET 1 OF 1
1515.02

- NOTES:
- THIS DETAIL SHOWS THE TYPICAL FINAL FIRE HYDRANT CONFIGURATION AFTER INSTALLATION OF A PROPOSED FIRE HYDRANT, RECONNECTION OF AN EXISTING FIRE HYDRANT, OR RELOCATION OF A FIRE HYDRANT.
 - KEEP DRAIN PORTS FREE FROM OBSTRUCTION.
 - RESTRAIN ALL PIPE JOINTS AND FITTINGS. ACCEPTABLE TYPES OF RESTRAINT INCLUDE RESTRAINING GLANDS; RESTRAINED, PUSH-ON JOINTS; AND 3/4" BITUMINOUS COATED, ALL-THREAD RESTRAINING RODS. THRUST BLOCKS ARE NOT AN ACCEPTABLE TYPE OF RESTRAINT.
 - FOR RELOCATED OR RECONNECTED FIRE HYDRANTS, VERIFY THE VALVE IS RESTRAINED TO THE MAIN. PROVIDE APPROPRIATE RESTRAINT.
 - HYDRANT LOCATION APPLIES TO PROPOSED AND RELOCATED FIRE HYDRANTS.
 - LOCATE FIRE HYDRANT WITH 3' HORIZONTAL CLEARANCE FROM ABOVE GROUND OBJECTS.
 - PROVIDE A MINIMUM OF 3' COVER OVER ALL SECTIONS OF HORIZONTAL PIPE. USE FITTINGS AS NECESSARY.
 - TAPPING SLEEVES MAY BE USED ON EXISTING MAINS IN LIEU OF DI TEES.
 - LOCATE FIRE HYDRANT OUTSIDE OF THE VEHICLE RECOVERY AREA, ADJACENT TO THE R/W LINE, OR IN A PROTECTED AREA.



STATE OF NORTH CAROLINA
DEPT. OF TRANSPORTATION
DIVISION OF HIGHWAYS
RALEIGH, N.C.

1-12

ENGLISH STANDARD DRAWING FOR
FIRE HYDRANT

SHEET 1 OF 1
1515.02

PROJECT REFERENCE NO. U-3812 SHEET NO. UC-5

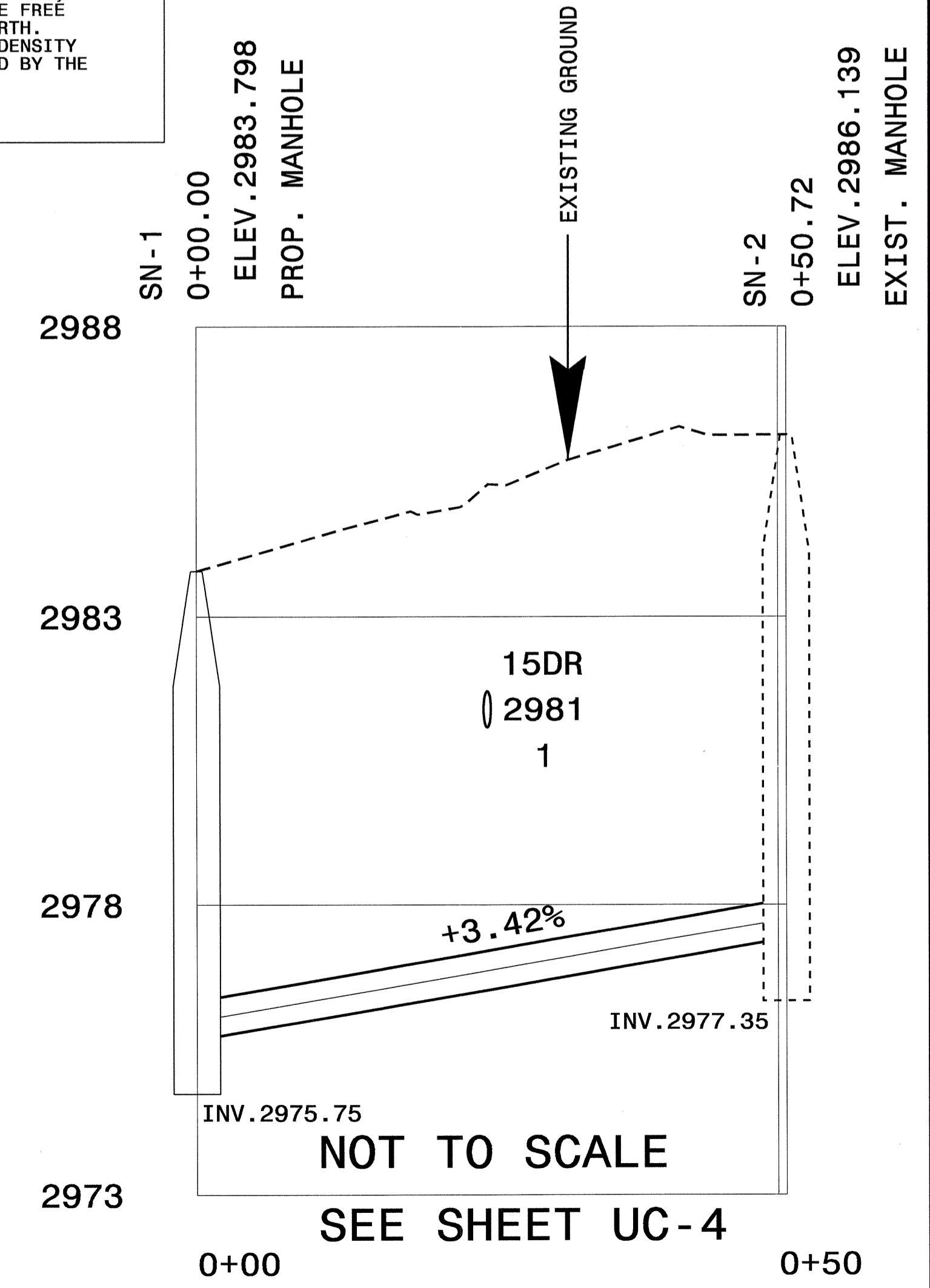
DESIGNED BY:
DRAWN BY:
CHECKED BY:
APPROVED BY:
REVISED:

NORTH CAROLINA DEPARTMENT OF TRANSPORTATION
UTILITIES ENGINEERING SEC.
PHONE: (919)250-4128
FAX: (919)250-4119

UTILITY CONSTRUCTION PLANS ONLY

SEAN J. KOLBERG
ENGINEER
1033666

UTILITY CONSTRUCTION

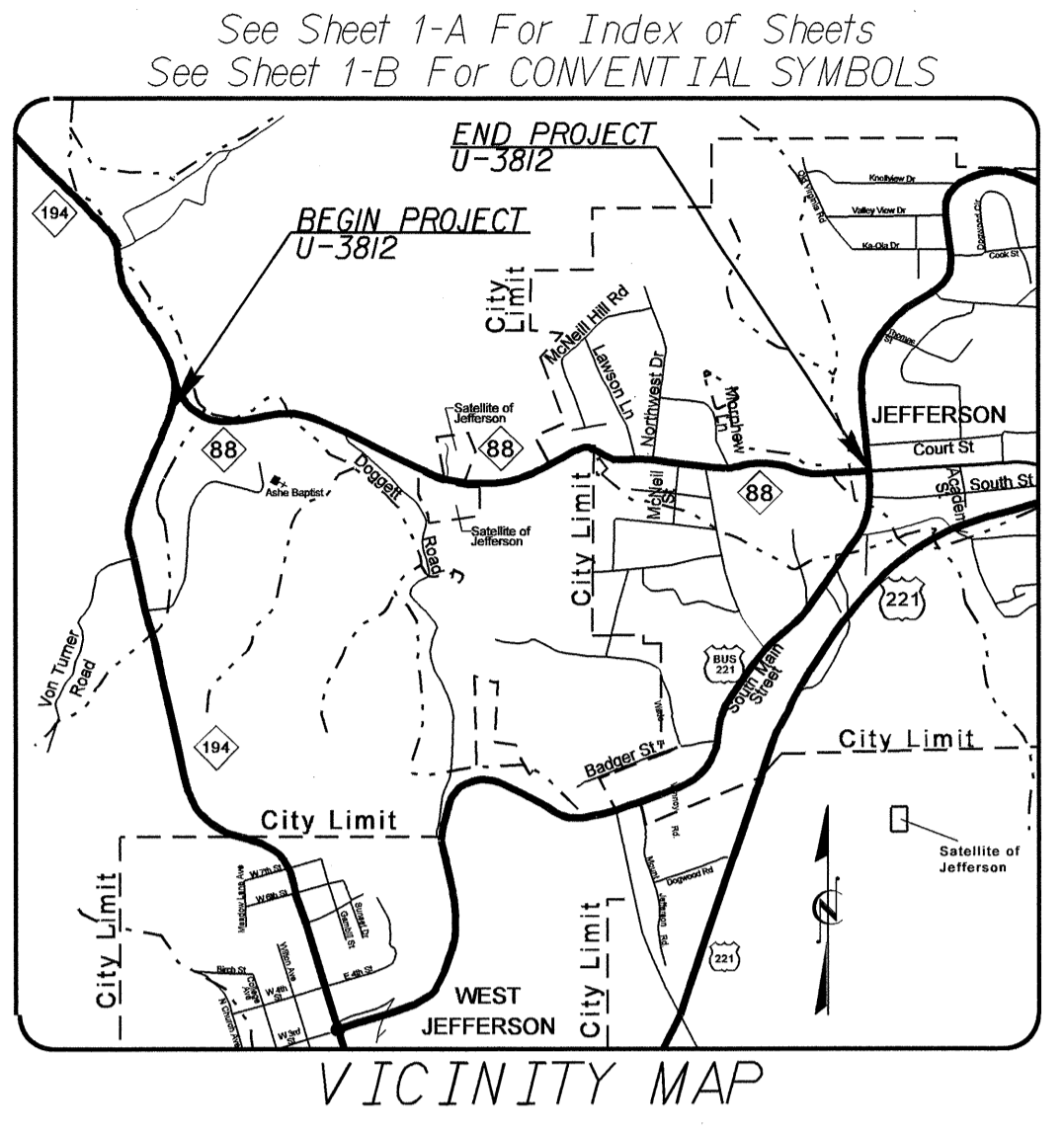


05-OCT-2011 11:41 AM P:\proj\1515\1515-UC-5.dwg

05/08/99

T.I.P. NO.	SHEET NO.
U-3812	UO-1

TIP PROJECT: U-3812

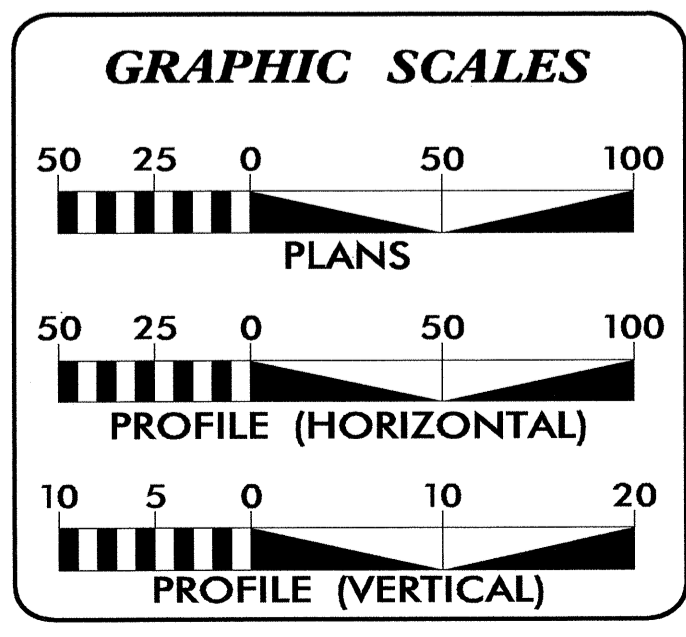
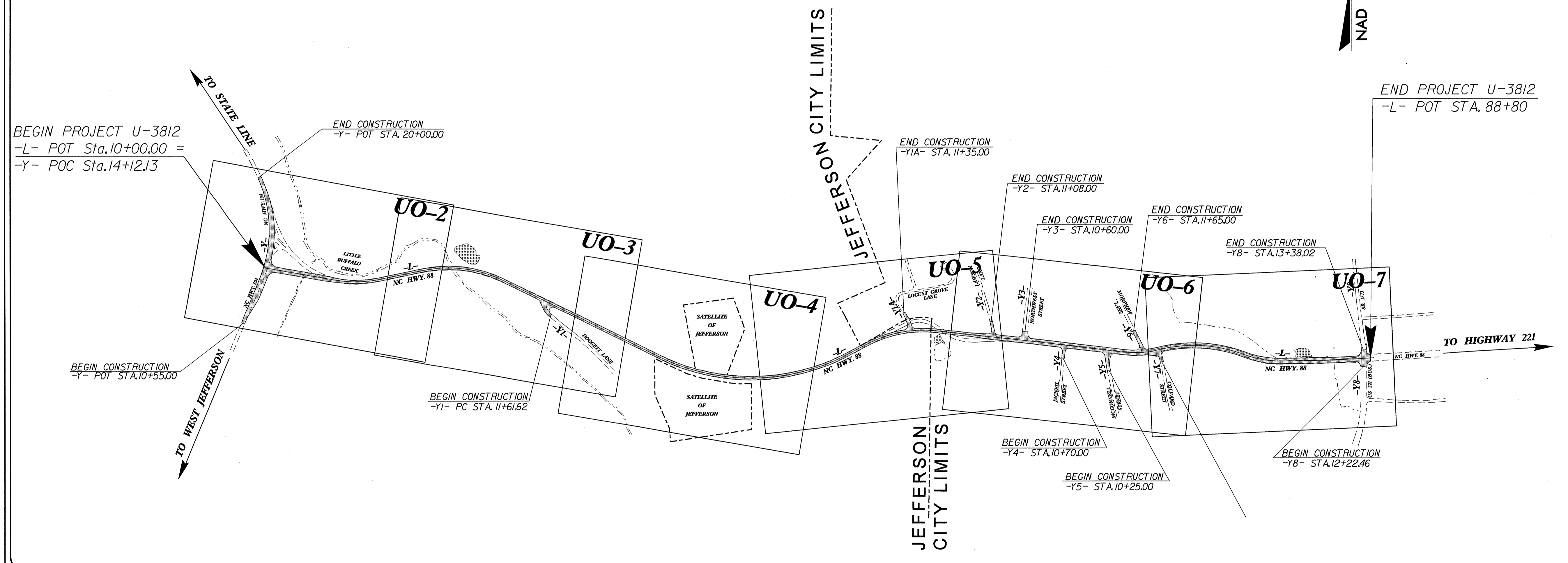


STATE OF NORTH CAROLINA
DIVISION OF HIGHWAYS

**UTILITY CONSTRUCTION PLANS
ASHE COUNTY**

**LOCATION: NC 88 (WEST MAIN ST.) FROM NC 194
TO US BUSINESS (SOUTH MAIN ST)**

**TYPE OF WORK: POWER LINE, TELEPHONE LINE
& CABLE TV RELOCATION**




INDEX OF SHEETS

SHEET NO.	DESCRIPTION
UO-1	TITLE SHEET
UO-2 THRU UO-7	UTILITY BY OTHERS PLAN SHEETS

UTILITY OWNERS ON PROJECT

- BLUE RIDGE EMC
- SKYLINE TMC
- CENTURY LINK
- SPRINT-CENTRAL TELEPHONE COMPANY
- MORRIS BROADBAND CABLEVISION



PREPARED IN THE OFFICE OF:
**DIVISION OF HIGHWAYS
UTILITIES ENGINEERING
SECTION**

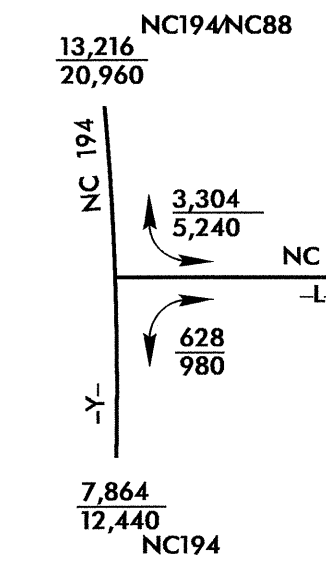
1591 MAIL SERVICES CENTER
RALEIGH NC 27699-1591
PHONE (919) 250-4128
FAX (919) 250-4119

Roger Worthington, P.E. UTILITIES SECTION ENGINEER
Carl Barclay, P.E. UTILITIES SQUAD LEADER PROJECT ENGINEER
Ali Kouchehi, PE UTILITIES PROJECT DESIGNER

06-SEP-2011 10:19
R:\Utilities\RDY_UH\Proj\UO PLANS\U3812_rdy_tsh_UO.dgn
\$\$\$\$\$USERNAME\$\$\$\$\$

UTILITIES BY OTHERS

NOTE:
ALL PROPOSED UTILITY WORK SHOWN ON THIS SHEET WILL BE DONE BY OTHERS



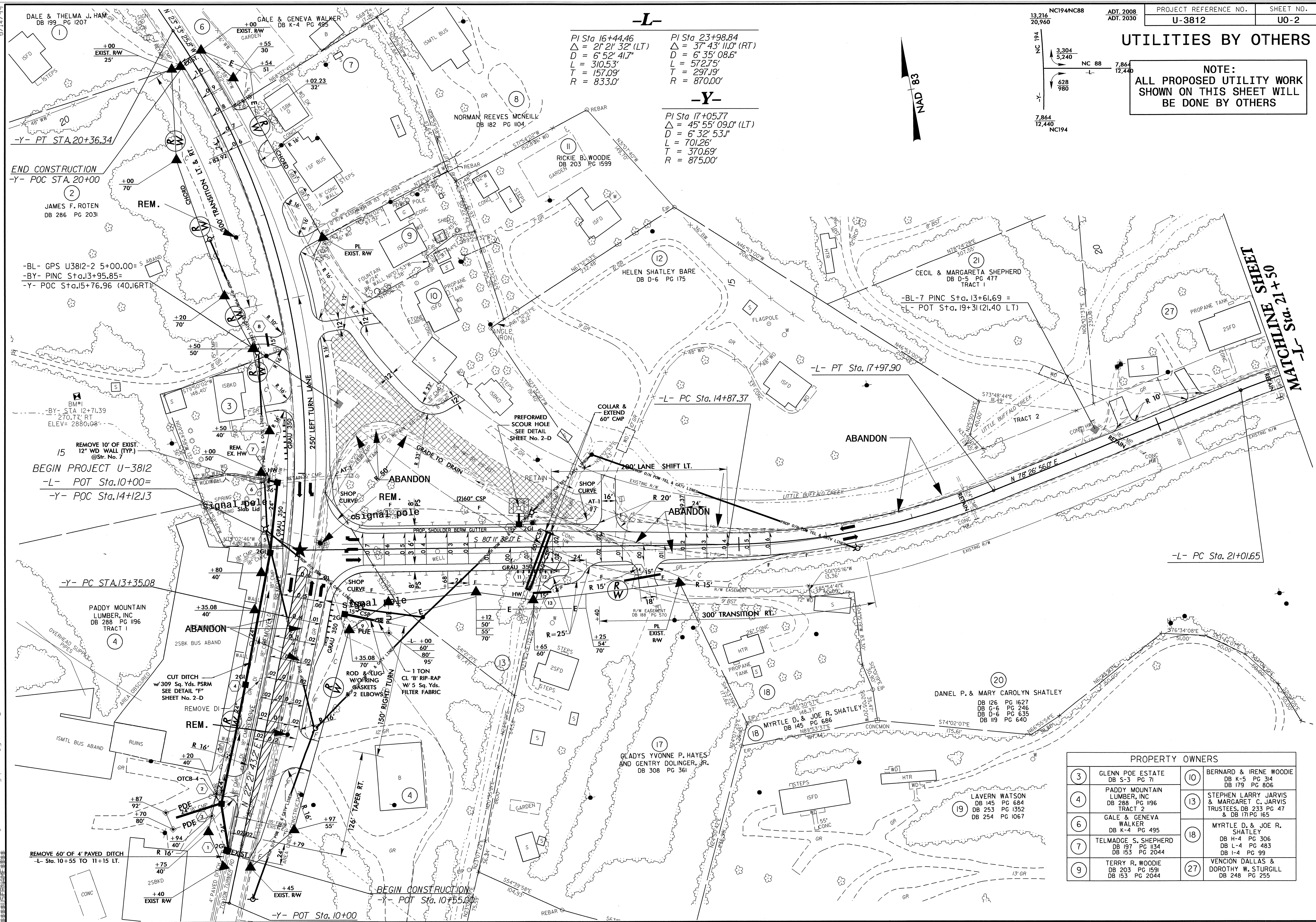
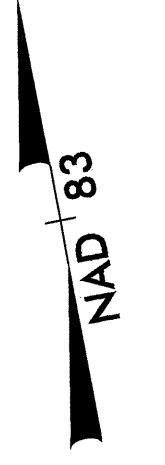
-L-

PI Sta 16+44.46
 $\Delta = 2^\circ 21' 32''$ (LT)
 $D = 6^\circ 52' 41.7''$
 $L = 310.53'$
 $T = 157.09'$
 $R = 833.0'$

PI Sta 23+98.84
 $\Delta = 37^\circ 43' 11.0''$ (RT)
 $D = 6^\circ 35' 08.6''$
 $L = 572.75'$
 $T = 297.19'$
 $R = 870.00'$

-Y-

PI Sta 17+05.77
 $\Delta = 45^\circ 55' 09.0''$ (LT)
 $D = 6^\circ 32' 53.1''$
 $L = 701.26'$
 $T = 370.69'$
 $R = 875.00'$



PROPERTY OWNERS			
3	GLENN POE ESTATE DB S-3 PG 71	10	BERNARD & IRENE WOODIE DB K-5 PG 314 DB 179 PG 806
4	PADDY MOUNTAIN LUMBER, INC DB 288 PG 1196	13	STEPHEN LARRY JARVIS & MARGARET C. JARVIS TRUSTEES, DB 233 PG 47 & DB 171 PG 165
6	GALE & GENEVA WALKER DB K-4 PG 495	18	MYRTLE D. & JOE R. SHATLEY DB H-4 PG 306 DB L-4 PG 483 DB I-4 PG 99
7	TELMADGE S. SHEPHERD DB 197 PG 1134 DB 153 PG 2044	27	VENCION DALLAS & DOROTHY W. STURGILL DB 248 PG 255
9	TERRY R. WOODIE DB 203 PG 1591 DB 153 PG 2044		

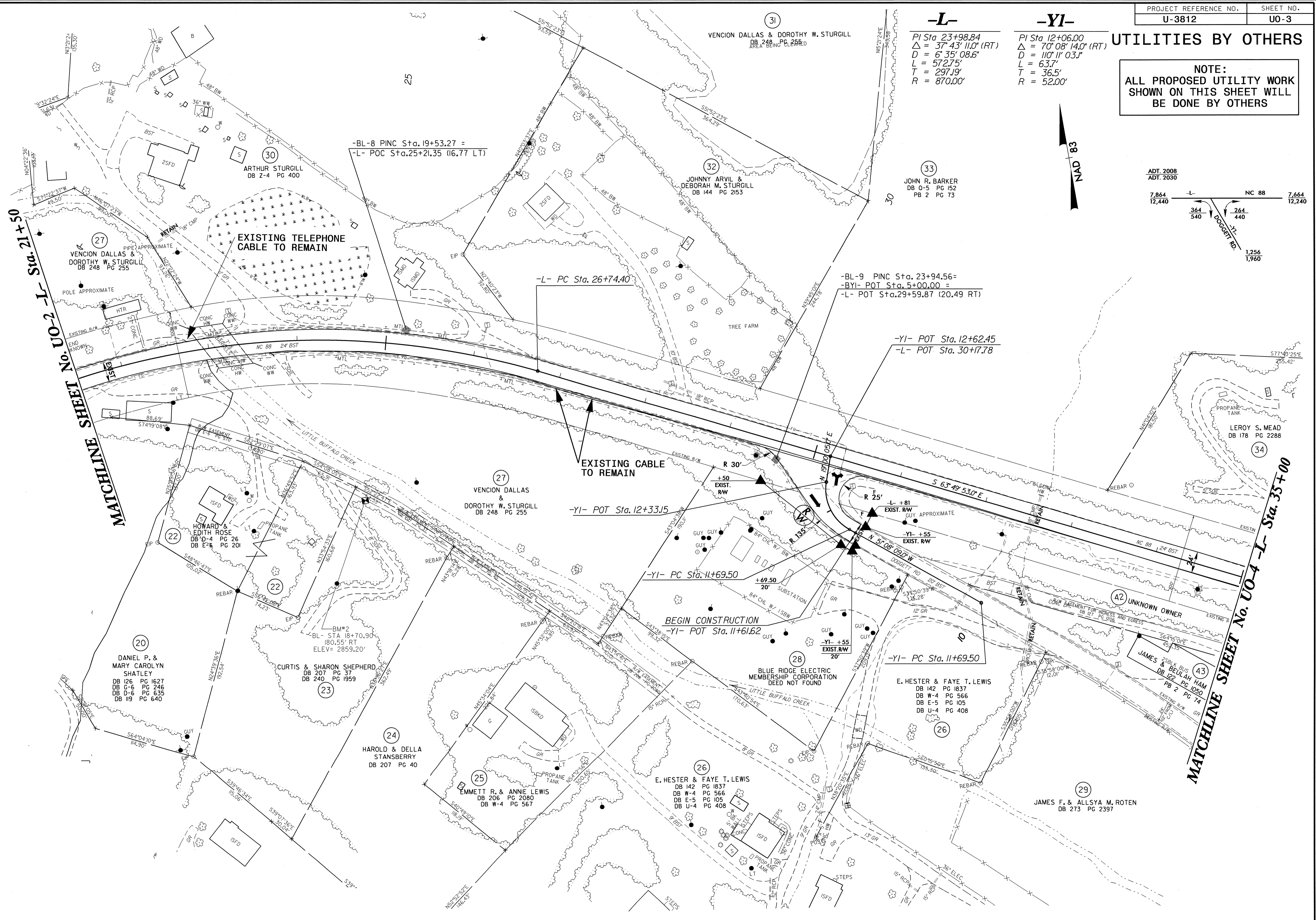
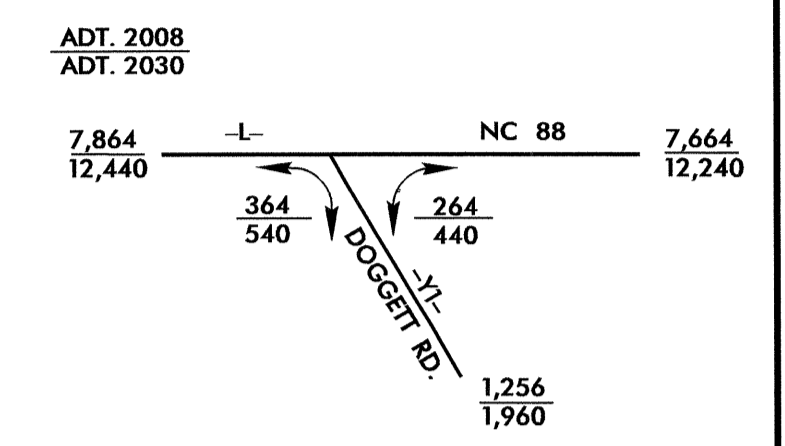
C:\CADD\PROJECTS\114\114.DWG, P:\CADD\PROJECTS\114\114.DWG, P:\CADD\PROJECTS\114\114.DWG, P:\CADD\PROJECTS\114\114.DWG

UTILITIES BY OTHERS

NOTE:
ALL PROPOSED UTILITY WORK SHOWN ON THIS SHEET WILL BE DONE BY OTHERS

-L-
 PI Sta 23+98.84
 $\Delta = 37^\circ 43' 11.0''$ (RT)
 $D = 6' 35'' 08.6''$
 $L = 572.75'$
 $T = 297.19'$
 $R = 870.00'$

-YI-
 PI Sta 12+06.00
 $\Delta = 70^\circ 08' 14.0''$ (RT)
 $D = 110' 11'' 03.1''$
 $L = 63.7'$
 $T = 36.5'$
 $R = 52.00'$

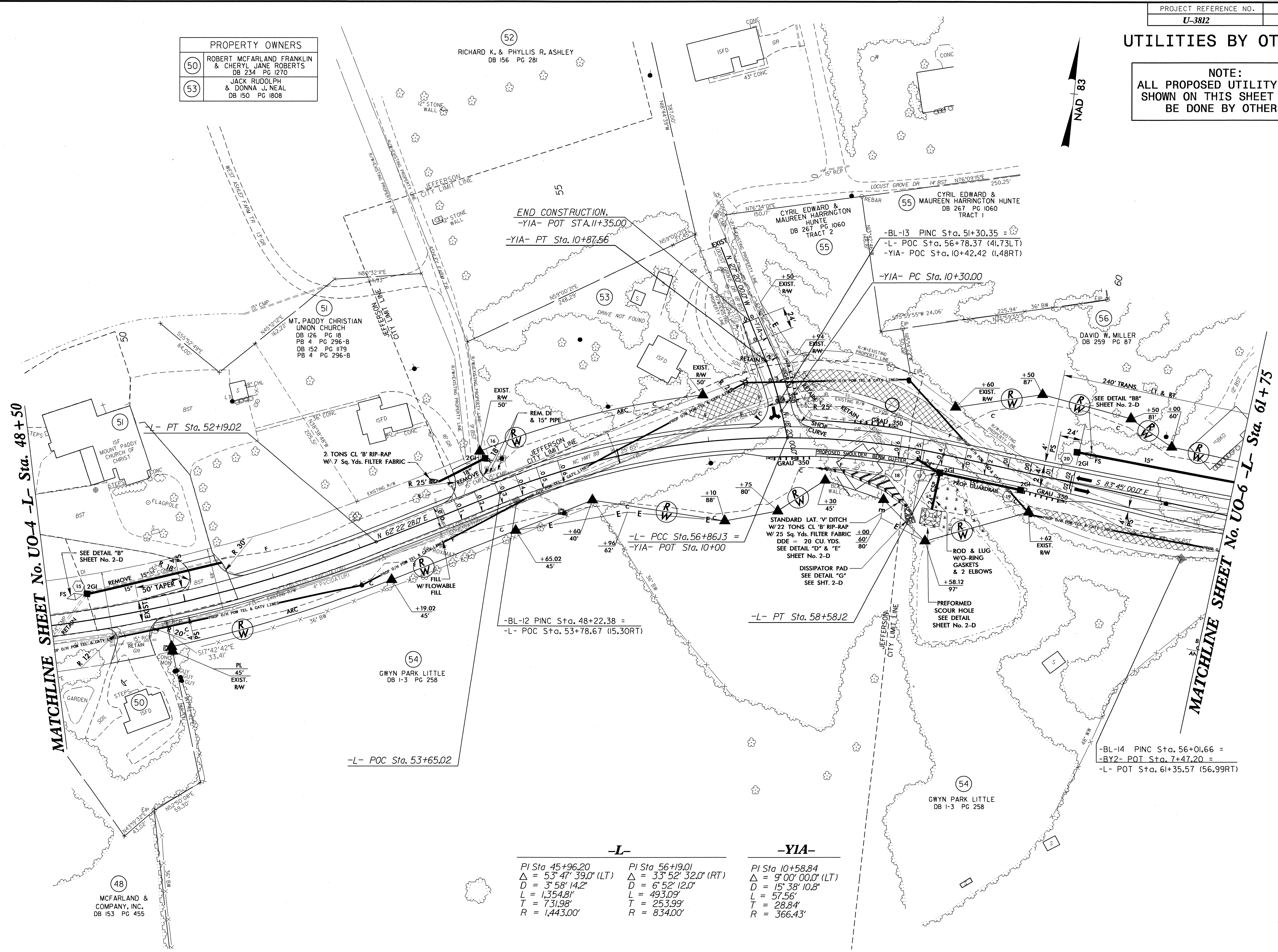


06-SEP-2011 04:33 U:\PLANS\U3812-r-dj-ps\h05.dgn
 5/14/99

UTILITIES BY OTHERS

NOTE:
ALL PROPOSED UTILITY WORK
SHOWN ON THIS SHEET WILL
BE DONE BY OTHERS

PROPERTY OWNERS	
50	ROBERT MCFARLAND FRANKLIN & CHERYL JANE ROBERTS DB 234 PG 1270
53	JACK RUDOLPH & DONNA J. NEAL DB 150 PG 1808



END CONSTRUCTION.
-YIA- POT Sta. 11+35.00
-YIA- PT Sta. 10+87.56

-BL-13 PINC Sta. 51+30.35 =
-L- POC Sta. 56+78.37 (41.73LT)
-YIA- POC Sta. 10+42.42 (1.48RT)
-YIA- PC Sta. 10+30.00

-L- PT Sta. 52+19.02

-BL-12 PINC Sta. 48+22.38 =
-L- POC Sta. 53+78.67 (15.30RT)

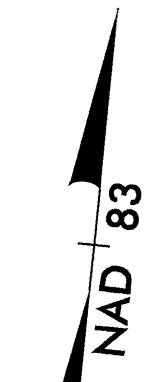
-L- PT Sta. 58+58.12

-BL-14 PINC Sta. 56+01.66 =
-BY2- POT Sta. 7+47.20 =
-L- POT Sta. 61+35.57 (56.99RT)

-L-		-YIA-	
PI Sta 45+96.20	PI Sta 56+19.01	PI Sta 10+58.84	
Δ = 53° 47' 39.0" (LT)	Δ = 33° 52' 32.0" (RT)	Δ = 9° 00' 00.0" (LT)	
D = 3' 58' 14.2"	D = 6' 52' 12.0"	D = 15' 38' 10.8"	
L = 1,354.81'	L = 493.09'	L = 57.56'	
T = 731.98'	T = 253.99'	T = 28.84'	
R = 1,443.00'	R = 834.00'	R = 366.43'	

MATCHLINE SHEET No. UO-4 -L- Sta. 48+50

MATCHLINE SHEET No. UO-6 -L- Sta. 61+75



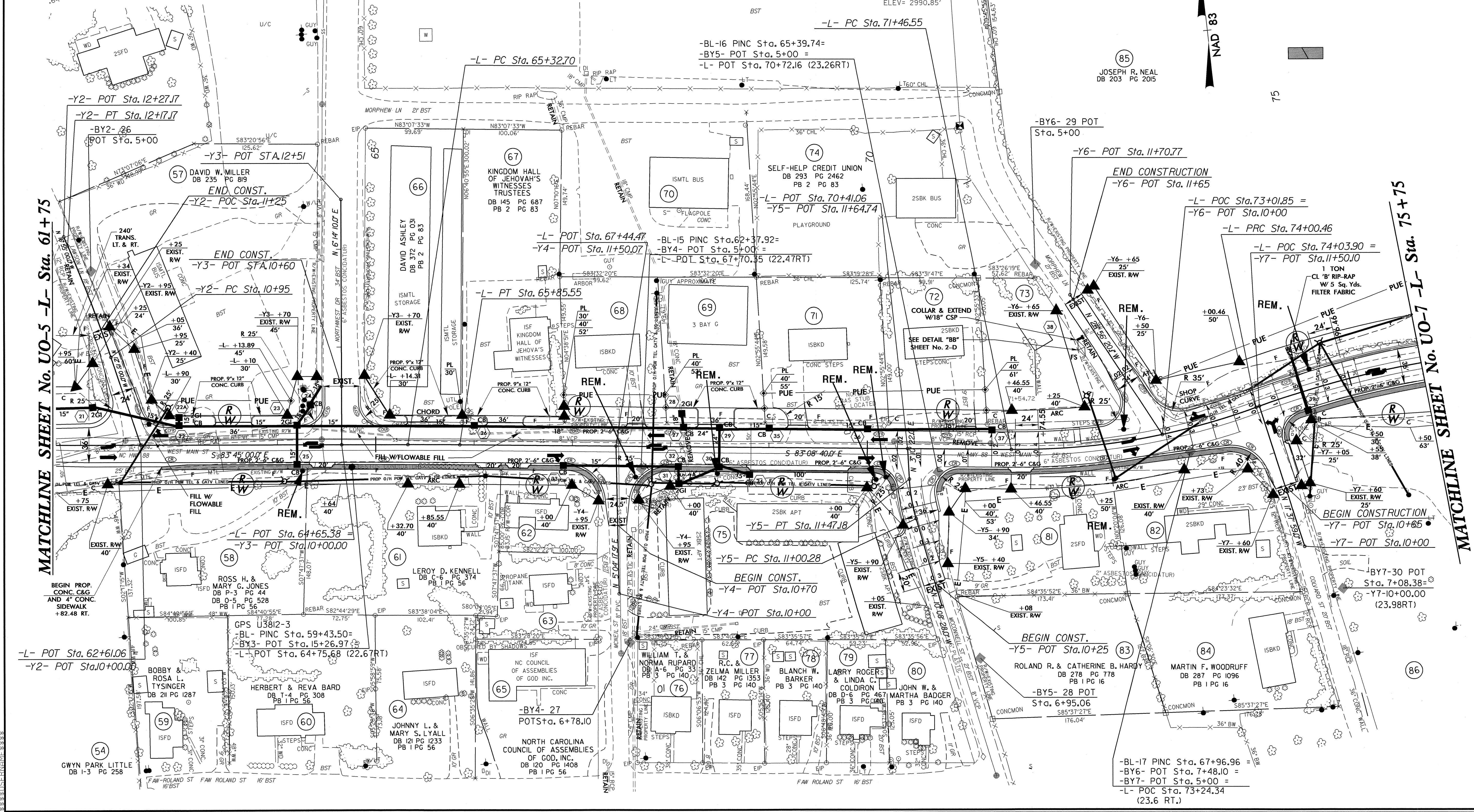
8/17/1989
U:\11
05-06-05-08-09-10-11-12-13-14-15-16-17-18-19-20-21-22-23-24-25-26-27-28-29-30-31-32-33-34-35-36-37-38-39-40-41-42-43-44-45-46-47-48-49-50-51-52-53-54-55-56-57-58-59-60-61-62-63-64-65-66-67-68-69-70-71-72-73-74-75-76-77-78-79-80-81-82-83-84-85-86-87-88-89-90-91-92-93-94-95-96-97-98-99-100-101-102-103-104-105-106-107-108-109-110-111-112-113-114-115-116-117-118-119-120-121-122-123-124-125-126-127-128-129-130-131-132-133-134-135-136-137-138-139-140-141-142-143-144-145-146-147-148-149-150-151-152-153-154-155-156-157-158-159-160-161-162-163-164-165-166-167-168-169-170-171-172-173-174-175-176-177-178-179-180-181-182-183-184-185-186-187-188-189-190-191-192-193-194-195-196-197-198-199-200-201-202-203-204-205-206-207-208-209-210-211-212-213-214-215-216-217-218-219-220-221-222-223-224-225-226-227-228-229-230-231-232-233-234-235-236-237-238-239-240-241-242-243-244-245-246-247-248-249-250-251-252-253-254-255-256-257-258-259-260-261-262-263-264-265-266-267-268-269-270-271-272-273-274-275-276-277-278-279-280-281-282-283-284-285-286-287-288-289-290-291-292-293-294-295-296-297-298-299-300-301-302-303-304-305-306-307-308-309-310-311-312-313-314-315-316-317-318-319-320-321-322-323-324-325-326-327-328-329-330-331-332-333-334-335-336-337-338-339-340-341-342-343-344-345-346-347-348-349-350-351-352-353-354-355-356-357-358-359-360-361-362-363-364-365-366-367-368-369-370-371-372-373-374-375-376-377-378-379-380-381-382-383-384-385-386-387-388-389-390-391-392-393-394-395-396-397-398-399-400-401-402-403-404-405-406-407-408-409-410-411-412-413-414-415-416-417-418-419-420-421-422-423-424-425-426-427-428-429-430-431-432-433-434-435-436-437-438-439-440-441-442-443-444-445-446-447-448-449-450-451-452-453-454-455-456-457-458-459-460-461-462-463-464-465-466-467-468-469-470-471-472-473-474-475-476-477-478-479-480-481-482-483-484-485-486-487-488-489-490-491-492-493-494-495-496-497-498-499-500-501-502-503-504-505-506-507-508-509-510-511-512-513-514-515-516-517-518-519-520-521-522-523-524-525-526-527-528-529-530-531-532-533-534-535-536-537-538-539-540-541-542-543-544-545-546-547-548-549-550-551-552-553-554-555-556-557-558-559-560-561-562-563-564-565-566-567-568-569-570-571-572-573-574-575-576-577-578-579-580-581-582-583-584-585-586-587-588-589-590-591-592-593-594-595-596-597-598-599-600-601-602-603-604-605-606-607-608-609-610-611-612-613-614-615-616-617-618-619-620-621-622-623-624-625-626-627-628-629-630-631-632-633-634-635-636-637-638-639-640-641-642-643-644-645-646-647-648-649-650-651-652-653-654-655-656-657-658-659-660-661-662-663-664-665-666-667-668-669-670-671-672-673-674-675-676-677-678-679-680-681-682-683-684-685-686-687-688-689-690-691-692-693-694-695-696-697-698-699-700-701-702-703-704-705-706-707-708-709-710-711-712-713-714-715-716-717-718-719-720-721-722-723-724-725-726-727-728-729-730-731-732-733-734-735-736-737-738-739-740-741-742-743-744-745-746-747-748-749-750-751-752-753-754-755-756-757-758-759-760-761-762-763-764-765-766-767-768-769-770-771-772-773-774-775-776-777-778-779-780-781-782-783-784-785-786-787-788-789-790-791-792-793-794-795-796-797-798-799-800-801-802-803-804-805-806-807-808-809-810-811-812-813-814-815-816-817-818-819-820-821-822-823-824-825-826-827-828-829-830-831-832-833-834-835-836-837-838-839-840-841-842-843-844-845-846-847-848-849-850-851-852-853-854-855-856-857-858-859-860-861-862-863-864-865-866-867-868-869-870-871-872-873-874-875-876-877-878-879-880-881-882-883-884-885-886-887-888-889-890-891-892-893-894-895-896-897-898-899-900-901-902-903-904-905-906-907-908-909-910-911-912-913-914-915-916-917-918-919-920-921-922-923-924-925-926-927-928-929-930-931-932-933-934-935-936-937-938-939-940-941-942-943-944-945-946-947-948-949-950-951-952-953-954-955-956-957-958-959-960-961-962-963-964-965-966-967-968-969-970-971-972-973-974-975-976-977-978-979-980-981-982-983-984-985-986-987-988-989-990-991-992-993-994-995-996-997-998-999-1000

UTILITIES BY OTHERS

NOTE:
ALL PROPOSED UTILITY WORK
SHOWN ON THIS SHEET WILL
BE DONE BY OTHERS

PROPERTY OWNERS			
(62)	JEFFERY E. MAYNOR TERRIB, MAYNOR DB 323 PG 2124 PB 1 PG 56	(72)	SAMUEL GUTIERREZ & ELIDA GUTIERREZ DB 356 PG 1940 PB 2 PG 83
(63)	NELSE L. & INA HIMELRICHT OSBORNE DB 245 PG 981 PB 1 PG 56	(73)	ERNIE CARPENTER & DAVID BARR DB 277 PG 1491 PB 2 PG 83
(68)	JOHN WILLIAM & MARY ELIZABETH ROTEN, ETAL DB 279 PG 41 PB 2 PG 83	(75)	BETTY C. CROWDER DB 148 PG 473 PB 3 PG 140
(69)	CONLEY W. SHEPHERD & MICHAEL L. SHEPHERD DB 399 PG 1758 PB 2 PG 83	(81)	AMANDA K. BARKER L/E DB 254 PG 1050 PB 1 PG 16
(70)	ROBERT G. & DEBRA E. POE, ET AL DB 197 PG 2459 PB 2 PG 83	(82)	PHYLLIS JANET NEAVES ESTATE DB 167 PG 2169 PB 1 PG 16 07 E 287
(71)	PRISCILLA L. NORRIS & CLAYTON E. NORRIS DB 378 PG 503 PB 2 PG 83	(86)	NEW RIVER BEHAVIORAL HEALTHCARE PREVENTION FOUNDATION DB 270 PG 135 PB 1 PG 16

-L-		
PI Sta 65+59.12 Δ = 0° 36' 20.0" (RT) D = 1' 08' 45.3" L = 52.84' T = 26.42' R = 5,000.00'	PI Sta 72+74.91 Δ = 20° 47' 00.0" (LT) D = 8' 11' 06.4" L = 253.92' T = 128.37' R = 700.00'	PI Sta 77+09.24 Δ = 34° 19' 10.0" (RT) D = 5' 43' 46.5" L = 598.99' T = 308.78' R = 1,000.00'
-Y2-		
PI Sta 11+56.12 Δ = 4° 40' 00.0" (LT) D = 3' 49' 11.0" L = 122.17' T = 61.12' R = 1,500.00'	-Y3-	
PI Sta 10+61.47 Δ = 32° 57' 53.9" (RT) D = 45° 50' 11.8" L = 71.92' T = 36.99' R = 125.00'	PI Sta 11+20.70 Δ = 13° 18' 50" (RT) D = 32° 44' 25.6" L = 40.67' T = 20.42' R = 175.00'	



MATCHLINE SHEET No. UO-5 -L- Sta. 61+75

MATCHLINE SHEET No. UO-7 -L- Sta. 75+75

06-SEP-2010 09:15 U:\PLANS\UO-5-UO-6.dwg PLANS\UO-5-UO-6.dwg U:\PLANS\UO-5-UO-6.dwg U:\PLANS\UO-5-UO-6.dwg

UTILITIES BY OTHERS

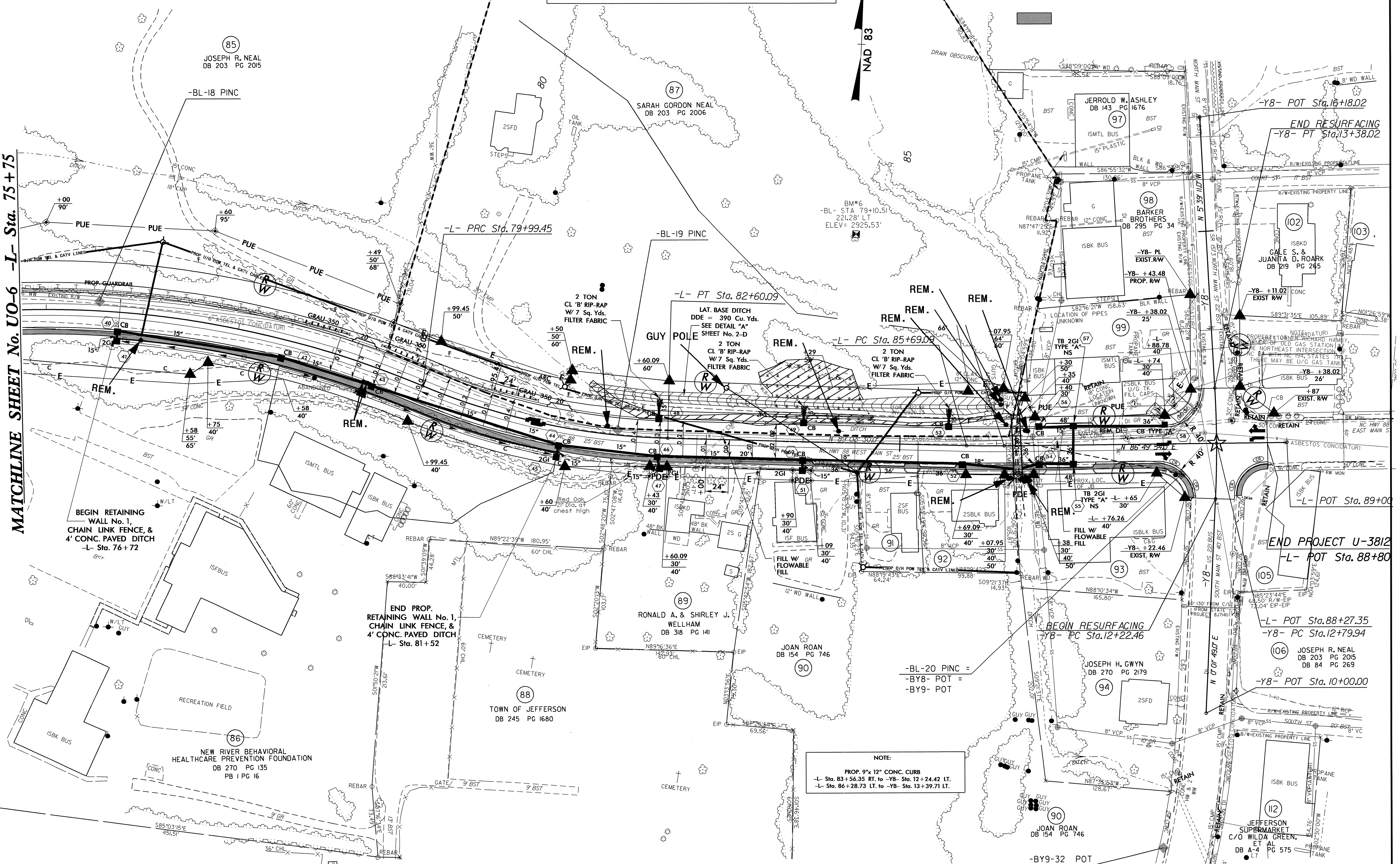
NOTE:
 ALL PROPOSED UTILITY WORK SHOWN ON THIS SHEET WILL BE DONE BY OTHERS

PROPERTY OWNERS			
(91)	THOMAS D. & VICTORIA HERMAN DB 198 PG 2499 DB 119 PG 469	(99)	DARREL & DARLENE POE, RICHARD & MICHELLE HAMBY DB 256 PG 1517
(92)	JOHN CHRISTOPHER BARR ET AL DB 405 PG 1039	(105)	GEORGE TIMOTHY & SANDRA W. SHATLEY DB 251 PG 1259
(93)	E. TRUETT JR. & MAREA B. WEAVER DB K-5 PG 254	(103)	JEFFERSON UNITED METHODIST CHURCH TRUSTEES DB 283 PG 435 DB 84 PG 292 DB 163 PG 29 DB 84 PG 248

-L-
 PI Sta 77+09.24 $\Delta = 34' 19" 10.0" (RT)$ $D = 5' 43' 46.5"$ $L = 598.99'$ $T = 308.78'$ $R = 1,000.00'$
 PI Sta 81+31.29 $\Delta = 21' 20' 00.0" (LT)$ $D = 8' 11' 06.4"$ $L = 260.64'$ $T = 131.84'$ $R = 700.00'$
 PI Sta 85+88.52 $\Delta = 2' 13' 36.0" (LT)$ $D = 5' 43' 46.5"$ $L = 38.86'$ $T = 19.43'$ $R = 1,000.00'$

----- PROPERTY DETERMINED ELIGIBLE FOR THE NATIONAL REGISTER

MATCHLINE SHEET No. UO-6 -L- Sta. 75+75



BEGIN RETAINING WALL No. 1, CHAIN LINK FENCE, & 4' CONC. PAVED DITCH
 -L- Sta. 76+72

END PROP. RETAINING WALL No. 1, CHAIN LINK FENCE, & 4' CONC. PAVED DITCH
 -L- Sta. 81+52

NOTE:
 PROP. 9"x12" CONC. CURB
 -L- Sta. 83+56.35 RT. to -Y8- Sta. 12+24.42 LT.
 -L- Sta. 86+28.73 LT. to -Y8- Sta. 13+39.71 LT.

END PROJECT U-3812
 -L- POT Sta. 88+80

-L- POT Sta. 88+27.35
 -Y8- PC Sta. 12+79.94

-Y8- POT Sta. 10+00.00

-Y8- POT Sta. 16+18.02
 END RESURFACING
 -Y8- PT Sta. 13+38.02

-Y8- POT Sta. 10+00.00

-Y8- POT Sta. 10+00.00

5/14/99

28-OCT-2010 08:41 JOU PLANS\U3812-rdy_psh09.dgn