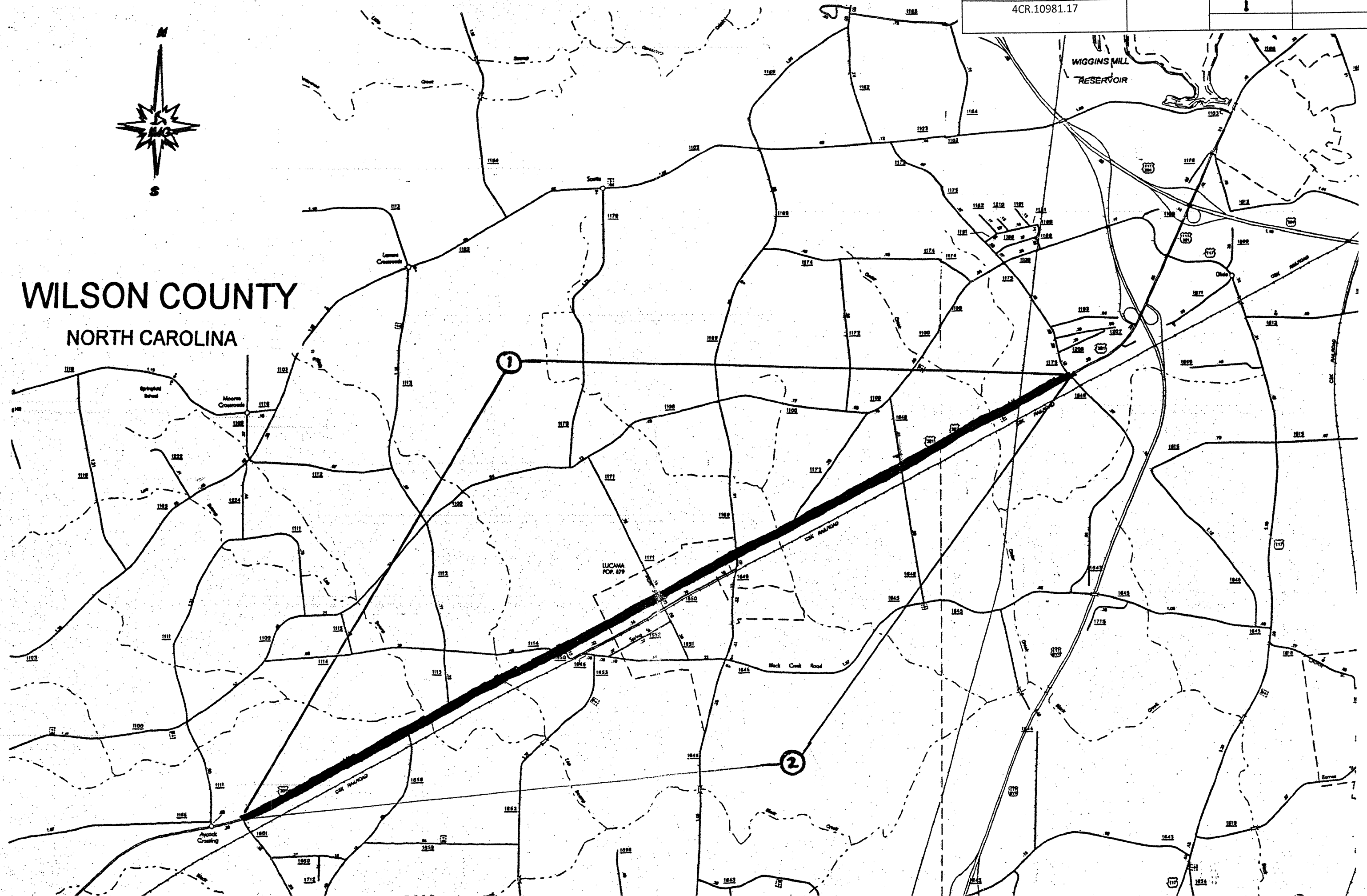


PROJECT NO. 4CR.10981.17	SHEET NO. 1	TOTAL NO. 1
-----------------------------	----------------	----------------

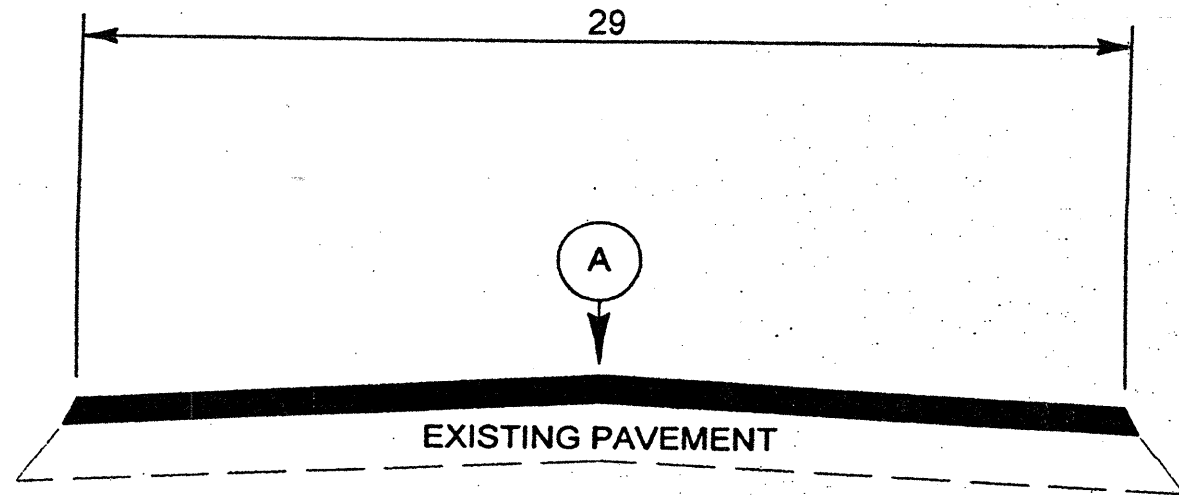


WILSON COUNTY

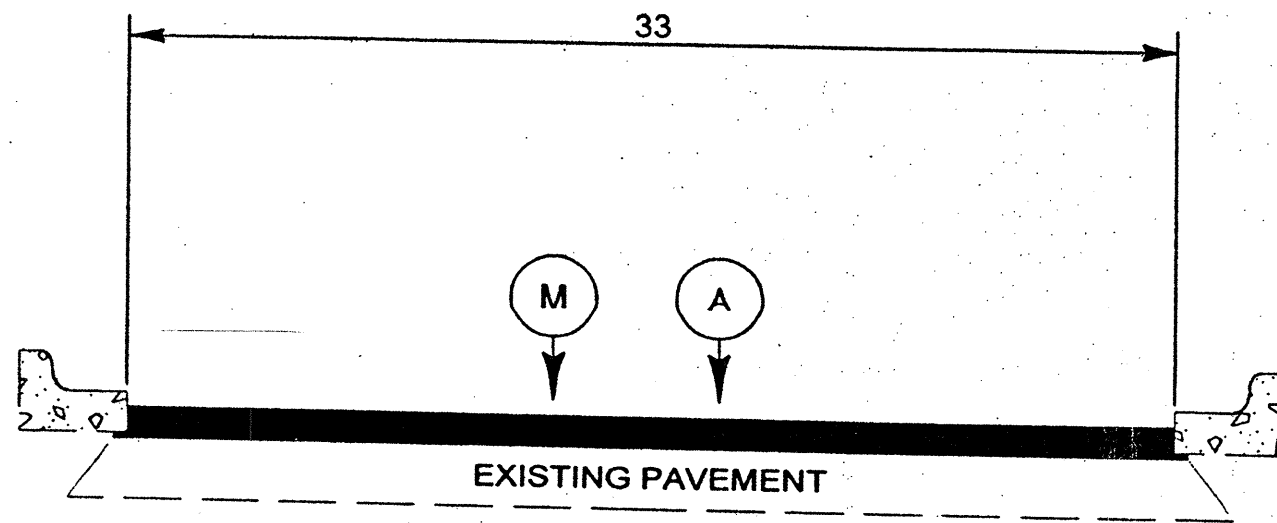
NORTH CAROLINA



PROJECT NO. 4CR.10981.17	SHEET NO. <u>2</u>	TOTAL SHEETS
-----------------------------	-----------------------	--------------



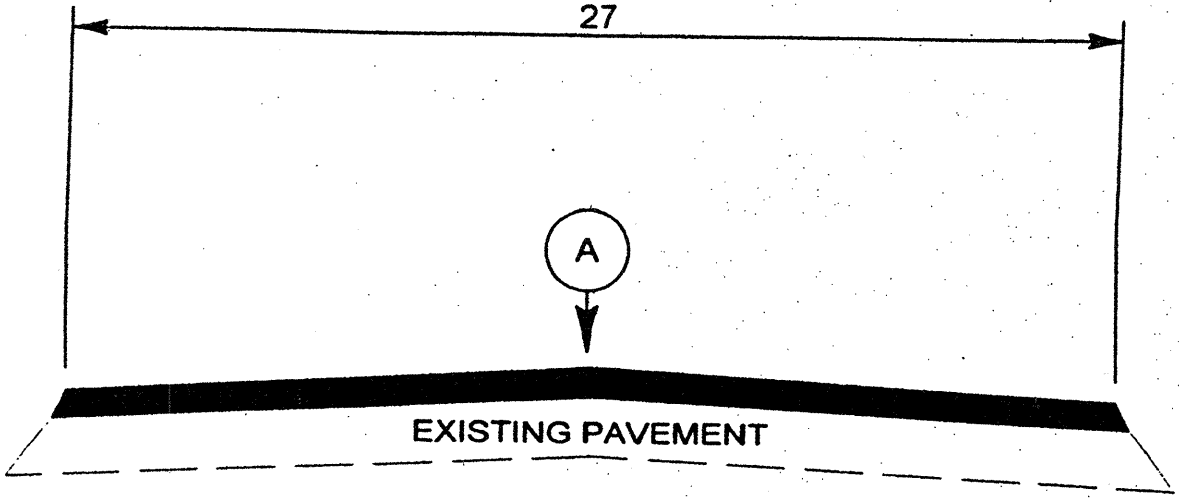
TYPICAL SECTION NO. 1



TYPICAL SECTION NO. 2

PAVEMENT SCHEDULE	
A	ASPHALT CONCRETE SURFACE COURSE TYPE S9.5B AT AN AVERAGE RATE OF 169 LBS PER SQ YS (1.5")
M	APPROXIMATELY 1.5" FULL WIDTH MILLING

PROJECT NO.	SHEET NO.	TOTAL SHEETS
4CR.10981.17	3	



TYPICAL SECTION NO. 3

PROJECT NO.		SHEET NO.	TOTAL NO.
4CR.10981.17		4	

SUMMARY OF QUANTITIES

PROJECT NO	COUNTY	MAP NO	ROUTE	DESCRIPTION	TYP NO	FINAL SURFACE TESTING REQUIRED	LENGTH MI	WIDTH FT	1/2" MILLING SY	SURFACE COURSE, S9.5B TONS	PG 64-22 PLANT MIX TONS	ADJ. OF MANHOLES EA	ADJ. OF METER OR VALVE BOX EA
4CR.10981.17	Wilson	1	US HWY 301 SBL	SBL FROM JOINT AT SR 1646 TO BEGIN CURB AND GUTTER	1	NO	2.4	29		3,714	223		
		"	"	SBL AND NBL FROM BEGIN CURB AND GUTTER TO END CURB AND GUTTER	2	NO	0.9	33	17,424	1,499	90	1	3
		"	"	SBL FROM END CURB AND GUTTER TO JOINT AT SR 1661	1	NO	2.4	29		3,505	210		
TOTAL FOR MAP NO. 1						NO	5.7		17,424	8,718	523	1	3
4CR.10981.17	Wilson	2	US HWY 301 NBL	NBL FROM JOINT AT SR 1661 TO BEGIN CURB AND GUTTER	3	NO	2.4	27		3,453	207		
		"	"	NBL FROM END CURB AND GUTTER TO JOINT AT SR 1646	3	NO	2.4	27		3,451	207		
TOTAL FOR MAP NO. 2							4.8			6,904	414		
TOTAL FOR PROJ NO. 4CR.10981.17							10.5		17,424	15,622	937	1	3
GRAND TOTAL							10.5		17,424	15,622	937	1	3

THERMOPLASTIC AND PAINT QUANTITIES

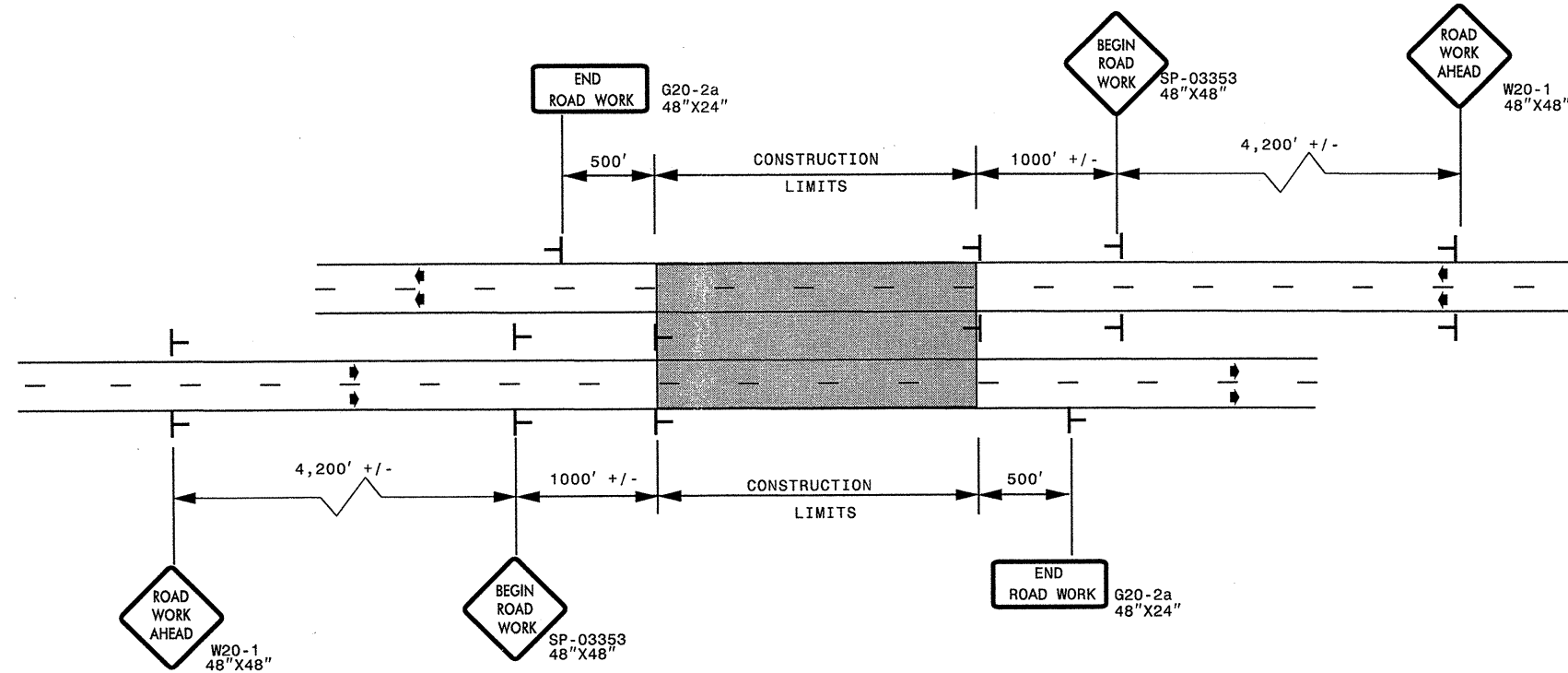
PROJECT NO	COUNTY	MAP NO	ROUTE	DESCRIPTION	LENGTH MI	WIDTH	4810000000-E		4835000000-E	4845000000-N		
							4" WHITE PAINT LF	4" YELLOW PAINT LF	24" WHITE PAINT LF	PAINT LT ARROW EA	PAINT STR ARROW EA	PAINT STR & RT ARROW EA
4CR.10981.17	Wilson	1	US HWY 301 SBL	SBL FROM JOINT AT SR 1646 TO BEGIN CURB AND GUTTER	2.4	29	51,648	31,680	76	4	4	4
		"	"	SBL AND NBL FROM BEGIN CURB AND GUTTER TO END CURB AND GUTTER	0.9	33	21,144	11,880	192	86	12	8
		"	"	SBL FROM END CURB AND GUTTER TO JOINT AT SR 1661	2.4	29	51,648	31,680				
TOTAL FOR MAP NO. 1					5.7		124,440	75,240	268	90	16	12
4CR.10981.17	Wilson	2	US HWY 301 NBL	NBL FROM JOINT AT SR 1661 TO BEGIN CURB AND GUTTER	2.4	27	51,648	31,680				
		"	"	NBL FROM END CURB AND GUTTER TO JOINT AT SR 1646	2.4	27	51,648	31,680	76	6	4	4
TOTAL FOR MAP NO. 2					4.8		103,296	63,360	76	6	4	4
TOTAL FOR PROJ NO. 4CR.10981.17					10.5		227,736	138,600	344	96	20	16
GRAND TOTAL					10.5		227,736	138,600	344	96	20	16
							366,336			132		

ADVANCED WORK ZONE WARNING SIGNING FOR FREEWAYS (4 LANES OR GREATER)

WBS ELEMENT: 4CR.10981.17

PROJ. REFERENCE NO.	SHEET NO.
SEE TO THE LEFT	TCP-1

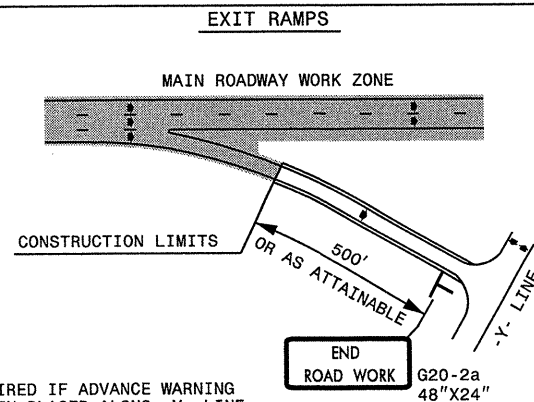
DETAIL A



LEGEND	
—	STATIONARY SIGN
→	DIRECTION OF TRAFFIC FLOW

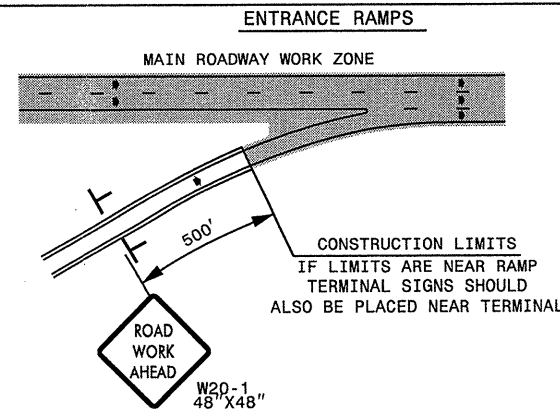
* USE THE "\$250 SPEEDING PENALTY" SIGN, SPEED LIMIT SIGN, AND ORANGE PANEL; ONLY WHEN A "\$250 SPEEDING PENALTY" ORDINANCE HAS BEEN ISSUED BY THE REGIONAL TRAFFIC ENGINEER.

DETAIL B

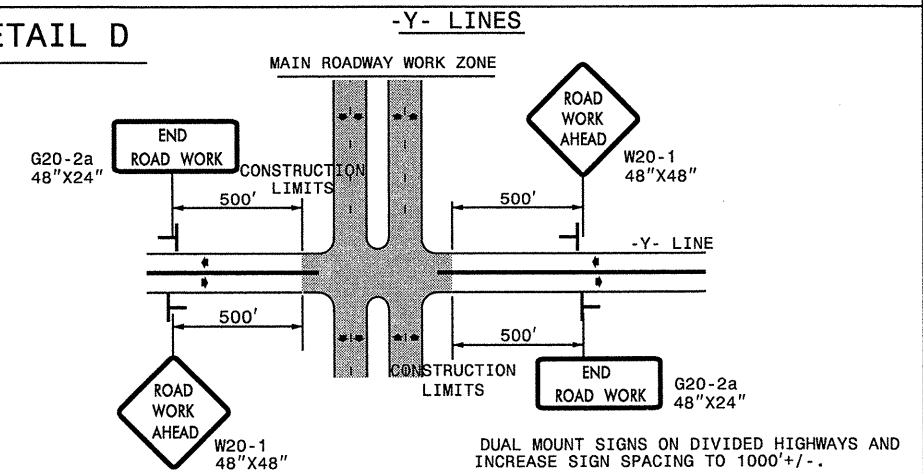


NOTE: SIGN NOT REQUIRED IF ADVANCE WARNING SIGNS HAVE BEEN PLACED ALONG -Y- LINE THAT RAMP INTERSECTS. IF CONSTRUCTION LIMITS ARE AT END OF RAMP, PLACE SIGN AT END OF RAMP.

DETAIL C



DETAIL D



GENERAL NOTES

- USE FLUORESCENT ORANGE SHEETING (TYPE VII OR HIGHER) ON ALL ADVANCED WORK ZONE SIGNS.
- DO NOT INSTALL ADVANCE WARNING SIGNS MORE THAN 3 DAYS PRIOR TO BEGINNING OF WORK.
- SIGNS SHOWN ARE REQUIRED FOR WORK ZONES THAT WILL REMAIN IN EFFECT OVERNIGHT. FOR SHORT-TERM DAILY MAINTENANCE TYPE OPERATIONS, THIS SIGNING APPLICATION IS OPTIONAL; MAY USE ONLY APPLICABLE ROADWAY STANDARD DRAWINGS INSTEAD. HOWEVER, IF THIS SIGNING APPLICATION IS USED, SIGNS MAY BE PORTABLE MOUNTED.
- ALL SIGN SPACING DIMENSIONS ARE APPROXIMATE, FIELD ADJUST AS NECESSARY OR AS DIRECTED.
- USE 3LB STEEL U-CHANNEL POST OR 4" X 4" WOOD POST FOR ALL WORK ZONE SIGNS. 3LB STEEL U-CHANNEL POSTS MUST MEET THE REQUIREMENTS OF STANDARD SPECIFICATION SECTION 1094-1(B); MAY BE GALVANIZED STEEL, OR MAY BE PAINTED GREEN BY THE POST MANUFACTURER. SQUARE STEEL TUBING POSTS HAVING EQUIVALENT STRENGTH OF THE 3 LB STEEL U-CHANNEL POST ARE ALSO ACCEPTABLE FOR USE. ERECT SIGNS PER ROADWAY STANDARD DRAWING 1110.01. PAYMENT FOR WOOD POSTS, 3LB STEEL U-CHANNEL AND SQUARE STEEL TUBING POSTS WITH SIGNS WILL BE MADE ACCORDING TO STANDARD SPECIFICATION "WORK ZONE SIGNS" SECTION 1110.
- WHEN NECESSARY, USE SPLICING IN ACCORDANCE WITH ROADWAY STANDARD DRAWING NO. 1110.01. REMOVE ENTIRE POST WHEN REMOVING SIGNS WITH SPLICED POSTS.
- DO NOT BACK BRACE SIGN SUPPORTS.

APPROVED: _____	DATE: _____	ADVANCED WORK ZONE WARNING SIGNS FOR FREEWAYS (4 LANES OR GREATER)	
SEAL	SCALE: NONE		REVISIONS
	DATE: _____		03/04
	DWG. BY: _____		
	DESIGN BY: _____		
	REVIEWED BY: _____		DATE: _____

30-SEP-2011 14:09 C:\0011\PROJECTS\GROUP5-WZTC\TMU\WZTC\Resur-facing\2011\Div04\C202868-4CR\10981.17\Wilson-Freeways-4lanes-or-greater_stationary.dgn