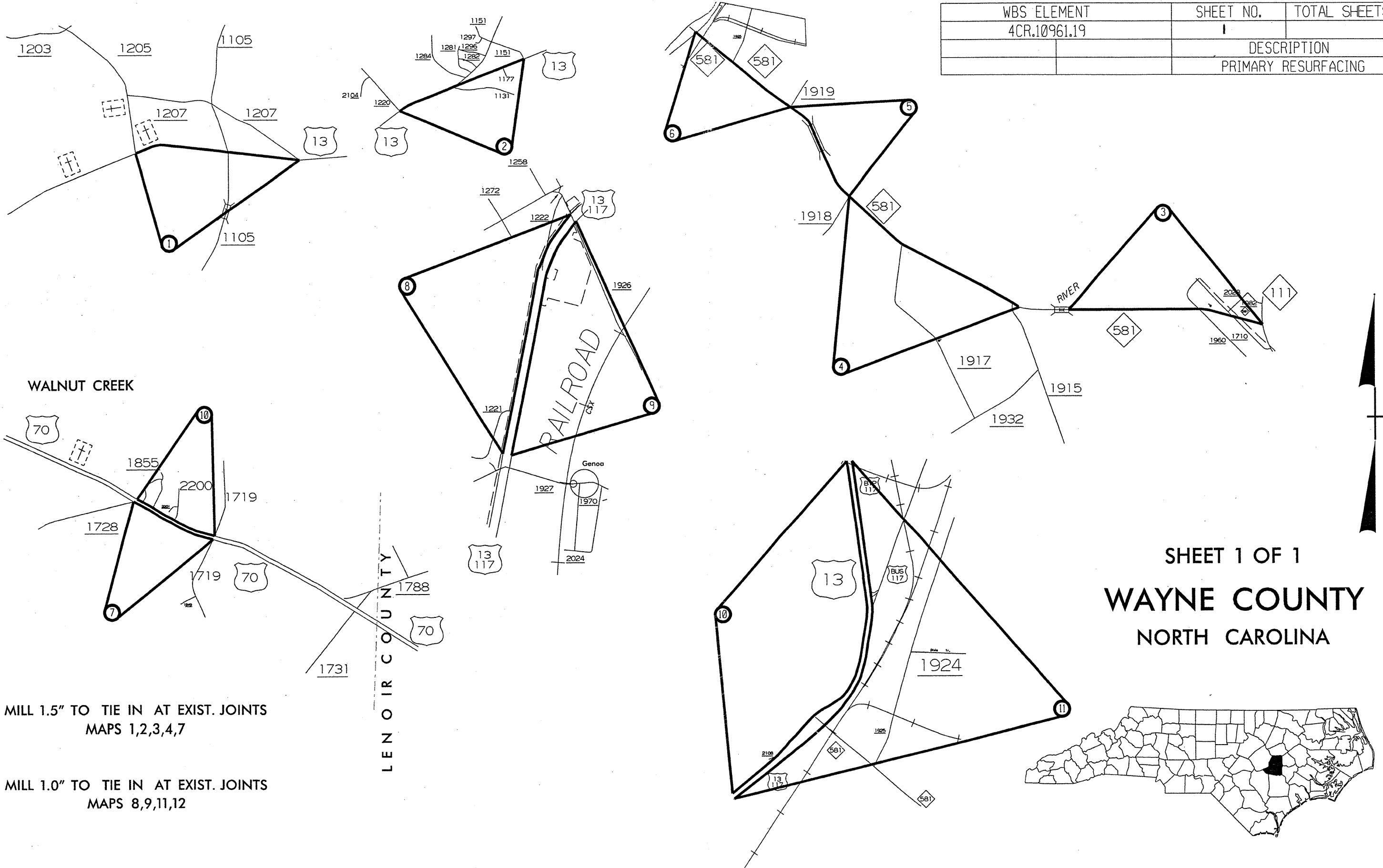


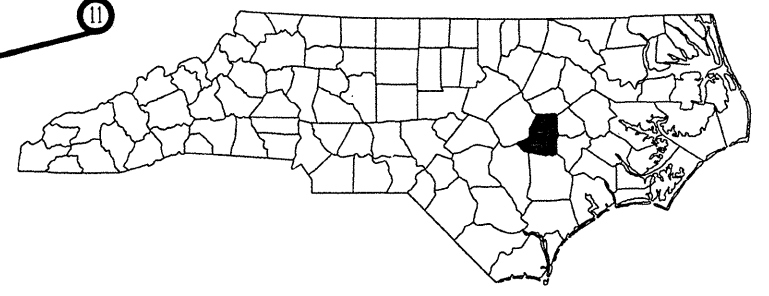
WBS ELEMENT	SHEET NO.	TOTAL SHEETS
4CR.10961.19	1	
DESCRIPTION		
PRIMARY RESURFACING		



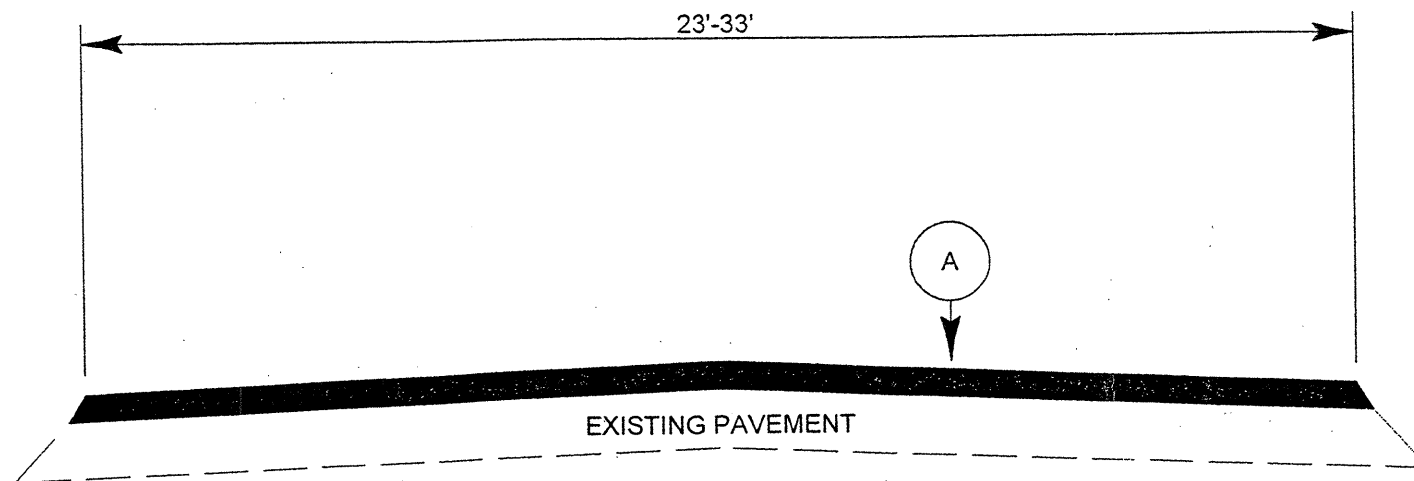
MILL 1.5" TO TIE IN AT EXIST. JOINTS
MAPS 1,2,3,4,7

MILL 1.0" TO TIE IN AT EXIST. JOINTS
MAPS 8,9,11,12

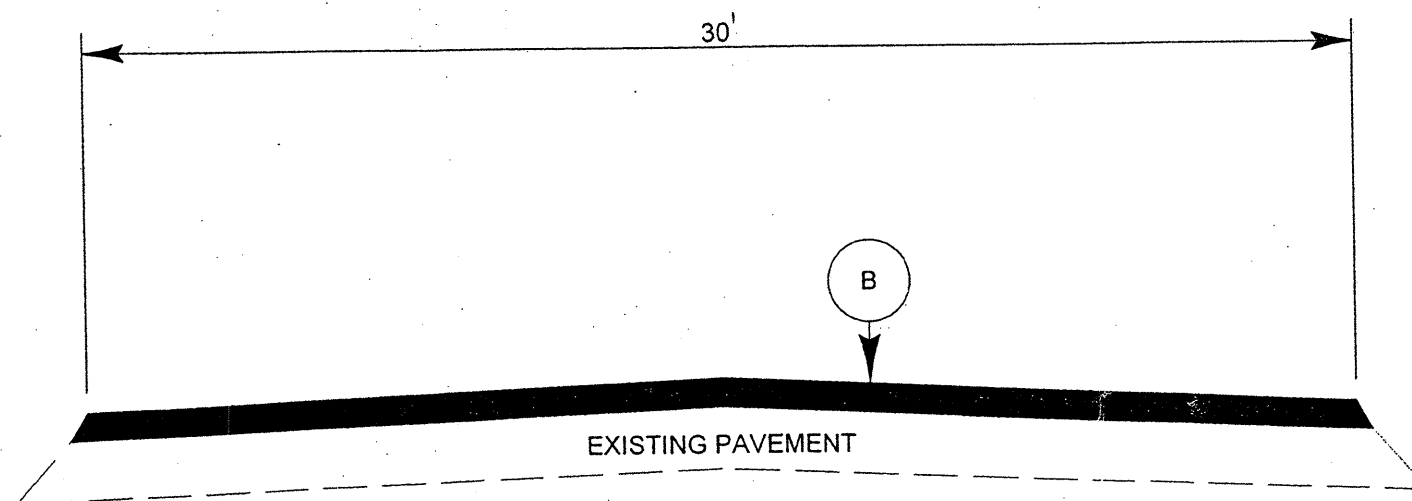
SHEET 1 OF 1
WAYNE COUNTY
NORTH CAROLINA



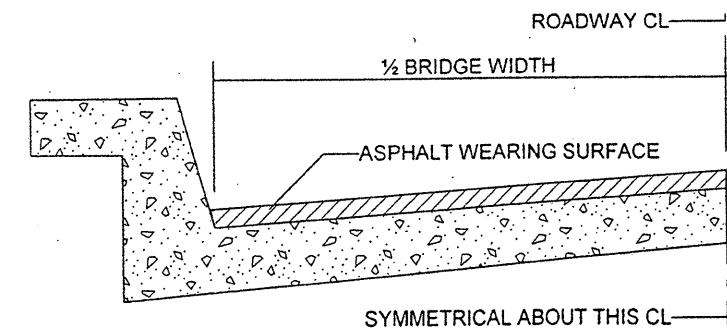
PROJECT NO.	SHEET NO.	TOTAL SHEETS
4CR.10961.19	2	



TYPICAL SECTION NO. 1



TYPICAL SECTION NO. 2



BRIDGE HALF TYPICAL SECTION

FOR BRIDGES WITH FLOOR DRAINS, CARE SHALL BE EXERCISED IN PLACING THE WEARING SURFACE AROUND FLOOR DRAINS SO AS NOT TO HINDER EFFECTIVE DRAINAGE. ALL DRAINS SHALL BE LEFT OPEN

THE PROPOSED WEARING SURFACE SHALL VARY IN THICKNESS AS NECESSARY TO PROVIDE A SMOOTH RIDING SURFACE. THE MINIMUM THICKNESS SHOULD DEPEND ON PAVEMENT TYPE AS FOLLOWS: S4.75A 1/2", SF9.5A 1.0", S9.5X 1.5", S12.5X 2.0", ULTRATHIN HOT MIX ASPHALT-TYPE A 1/2", ULTRATHIN HOT MIX ASPHALT-TYPE B 5/8", ULTRATHIN HOT MIX ASPHALT-TYPE C 1/2". THE MAXIMUM THICKNESS SHOULD DEPEND ON PAVEMENT TYPE AS FOLLOWS: S4.75A 1.0", SF9.5A 1.5", S9.5X 2.0", S12.5X 2.0", ULTRATHIN HOT MIX ASPHALT-TYPE A 3/4", ULTRATHIN HOT MIX ASPHALT-TYPE B 5/8", ULTRATHIN HOT MIX ASPHALT-TYPE C 1/2".

NOTES

ALL UNPAVED ROADS TO BE RESURFACED 50' FROM EDGE OF PAVEMENT OF MAIN PROJECT. ALL PAVED S.R. ROADS TO BE RESURFACED TO THE ENDS OF THE RADII, OR AS DIRECTED BY THE ENGINEER. EDGES, PAVEMENT WIDENING, INTERSECTIONS AND BRIDGE FLARES ARE INCLUDED IN THE TABLE OF QUANTITIES. ~~SHOULDER AND DITCHES ARE TO BE CONSTRUCTED BY OTHERS UNLESS OTHERWISE INDICATED.~~ BRIDGES ARE TO BE RESURFACED AT LOCATIONS AND TO DEPTH AS DIRECTED BY THE ENGINEER.

PAVEMENT SCHEDULE

A	PROPOSED APPROX. 1.5" OF S9.5B AT AN AVERAGE RATE OF 168 LBS PER SY
B	PROPOSED APPROX 1.5" OF S9.5C AT AN AVERAGE RATE OF 168 LBS PER SY

PROJECT NO.	SHEET NO.	TOTAL NO.
4CR.10961.19	3	

SUMMARY OF QUANTITIES

PROJECT NO	COUNTY	MAP NO	ROUTE	DESCRIPTION	TYP	FINAL SURFACE TESTING REQUIRED	LENGTH MI	WIDTH FT	1.5" MILLING SY	1" MILLING SY	SURFACE COURSE, S9.5B TONS	SURFACE COURSE, S9.5C TONS	ASPHALT BINDER FOR PLANT MIX TONS	ADJ. OF MANHOLES EA	ADJ. OF METER OR VALVE BOX EA
4CR.10961.19	Wayne	1	US 13	FROM SR 1205 TO SR 1207	1	NO	1.47	27	60		2,115		127		
		2	US 13	FROM SR 1220 TO SR 1151	1	NO	1.16	28	62		1,748		105		
		3	NC 581	FROM NC 111 TO BRIDGE	1	NO	0.81	33	37		1,852		111		
		4	NC 581	FROM 100' SE OF SR 1915 TO SR 1918	1	NO	1.95	23	26		2,430		146		
		5	NC 581	FROM SR 1918 TO SR 1919	1	NO	0.96	24			1,282		77		
		6	NC 581	FROM SR 1919 TO US 13	1	NO	1.08	24			1,650		99		
		7	US 70 EBL	FROM SR 1728 TO SR 1719	2	NO	0.81	30	33			1,520	90		
		8	US 13 SBL	FROM SR 1926 TO 500' SOUTH OF SR 1221	1	NO	0.92	25		56	1,591		95	1	
		9	US 13 NBL	FROM 500' SOUTH OF SR 1221 TO SR 1926	1	NO	0.91	25		56	1,557		93		7
		10	US 70WBL	FROM SR 1719 TO SR 1728	2	NO	0.78	30				1,539	91		
		11	US 13 SBL	FROM END I-795 PROJECT TO GOLDSBORO SOUTHERN CITY LIMIT	1	NO	1.07	28		62	1,798		108	1	1
		12	US 13 NBL	FROM GOLDSBORO SOUTHERN CITY LIMIT TO BEGIN I-795 PROJECT	1	NO	1.07	28		62	1,788		107		
TOTAL FOR PROJ NO. 4CR.10961.19							12.99		218	236	17,811	3,059	1,249	2	8
GRAND TOTAL							12.99		218	236	17,811	3,059	1,249	2	8

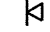



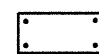
THERMOPLASTIC AND PAINT QUANTITIES

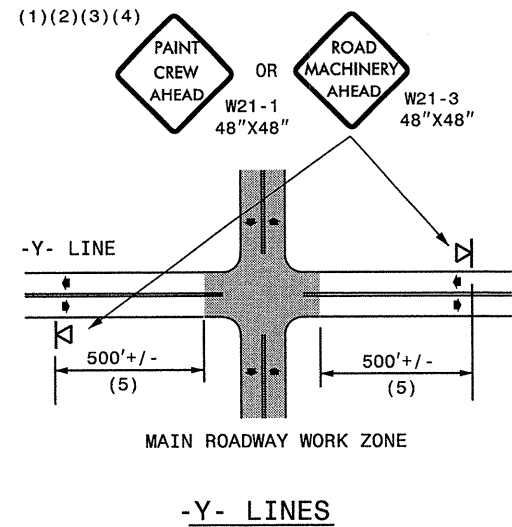
PROJECT NO	COUNTY	MAP NO	ROUTE	DESCRIPTION	LEN GTH	WIDTH	481500000-E		482000000-E		482500000-E	483000000-E	483500000-E	484000000-N		484500000-N					
							6" WHITE PAINT LF	6" YELLOW PAINT LF	8" WHITE PAINT LF	8" YELLOW PAINT LF	12" WHITE PAINT LF	16" WHITE PAINT LF	24" WHITE PAINT LF	PAINT MSG RXR EA	PAINT MSG ONLY EA	PAINT LT ARROW EA	PAINT RT ARROW EA	PAINT STR ARROW EA	PAINT STR & RT ARROW EA	PAINT LT STR RT ARROW EA	PAINT STR & LT ARROW EA
4CR.10961.19	Wayne	1	US 13	FROM SR 1205 TO SR 1207	1.5	27	31,634	19,404													
		2	US 13	FROM SR 1220 TO SR 1151	1.2	28	24,963	15,312													
		3	NC 581	FROM NC 111 TO BRIDGE	0.8	33	17,431	10,692	520					200			2	2			
		4	NC 581	FROM 100' SE OF SR 1915 TO SR 1918	2	23	41,964	25,740									1	2	2		
		5	NC 581	FROM SR 1918 TO SR 1919	1	24	20,659	12,672	250					20						1	
		6	NC 581	FROM SR 1919 TO US 13	1.1	24	23,242	14,256		900			100	84	4		14		3	2	
		7	US 70 EBL	FROM SR 1728 TO SR 1719	0.8	30	13,154	8,635	848	200						4	2	4	2		
		8	US 13 SBL	FROM SR 1926 TO 500' SOUTH OF SR 1221	0.9	25	14,941	9,807			450			76			8	5	8		2
		9	US 13 NBL	FROM 500' SOUTH OF SR 1221 TO SR 1926	0.9	25	14,778	9,701			700			180			9	10	12		2
		10	US 70WBL	FROM SR 1719 TO SR 1728	0.8	30	12,667	8,315	1,150								5	2	3		
		11	US 13 SBL	FROM END I-795 PROJECT TO GOLDSBORO SOUTHERN CITY LIMIT	1.1	28	17,377	11,406							36		15		3	3	
		12	US 13 NBL	FROM GOLDSBORO SOUTHERN CITY LIMIT TO BEGIN I-795 PROJECT	1.1	28	17,377	11,406			170			36			14		8		
TOTAL FOR PROJ NO. 4CR.10961.19							250,187	157,346	2,768	1,100	1,320	100	632	4	4	70	25	41	6	2	2
GRAND TOTAL							407,533	3,868					8		146						

GENERAL NOTES

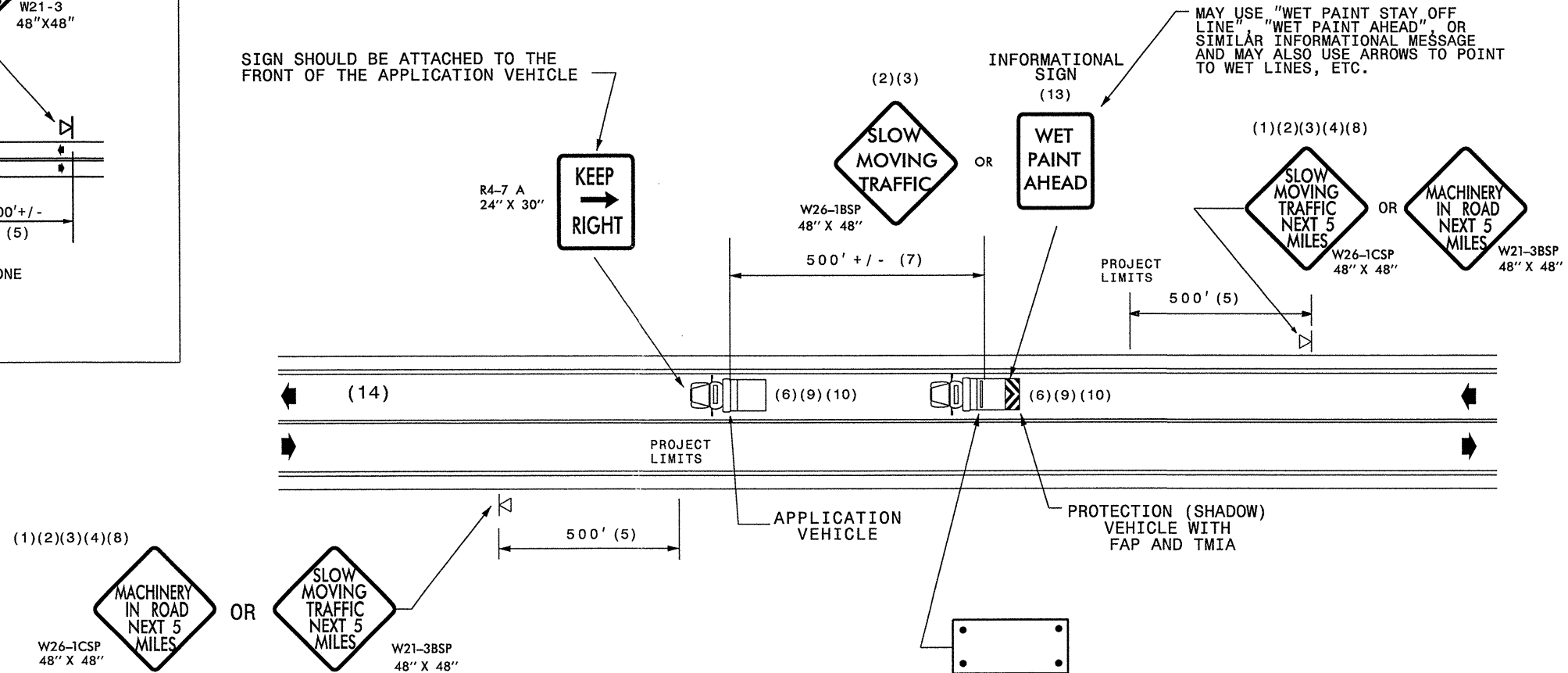
- (1) THE FOLLOWING OPTIONS MAY BE USED FOR ADVANCE WARNING SIGNS:
 - A. TRUCK MOUNTED SIGNS
 - B. TRUCK MOUNTED CHANGEABLE MESSAGE SIGN (CMS)
 - C. GROUND MOUNTED ADVANCE WARNING SIGNS (MUST CIRCLE TO PICK UP SIGNS)
 - D. GROUND MOUNTED CHANGEABLE MESSAGE SIGN (CMS) (MUST USE CIRCLE TO PICK UP SIGNS)
- (2) ALL ADVANCE WARNING SIGNS MUST BE 48" X 48" WITH FLUORESCENT ORANGE TYPE VII, VIII OR IX SHEETING. IF SPACE LIMITATIONS ON SHOULDER PROHIBIT A 48" X 48" SIGN, A SMALLER SIGN CAN BE USED WITH APPROVAL FROM ENGINEER.
- (3) SIGNS ON VEHICLES SHOULD BE MOUNTED A MINIMUM OF ONE (1) FOOT FROM THE GROUND AND SHOULD NOT BLOCK THE MOTORIST'S SIGHT OF THE FLASHING ARROW PANEL AND/OR LIGHTBAR.
- (4) GROUND MOUNTED ADVANCED WARNING SIGNS SHOULD BE MOUNTED A MINIMUM OF ONE (1) FOOT FROM THE GROUND TO BOTTOM OF SIGN.
- (5) SIGN SPACING SHOULD BE ADJUSTED FOR HORIZONTAL AND VERTICAL CURVES, ETC. TO IMPROVE SIGHT DISTANCES.
- (6) ADDITIONAL VEHICLES SHOULD BE USED IN WORK CARAVAN TO FACILITATE DRYING OF PAVEMENT MARKING MATERIAL (TMIA'S ARE OPTIONAL ON THESE ADDITIONAL VEHICLES). HOWEVER, THE FIRST VEHICLE MOTORISTS SEE IN THE TRAVEL LANE SHALL HAVE A TMIA.
- (7) ADJUST DISTANCE AS NEEDED TO PREVENT MOTORISTS FROM ENTERING SPACE BETWEEN THE APPLICATION AND PROTECTION VEHICLE. DISTANCE CAN BE LENGTHENED TO ACCOMODATE SIGHT DISTANCE NEEDS.
- (8) ROUND UP MILEAGE TO NEXT WHOLE MILE. WORK ZONE SHOULD NOT EXCEED FIVE (5) MILES IN LENGTH.
- (9) RADIO COMMUNICATION BETWEEN VEHICLES IS REQUIRED.
- (10) USE OF A LIGHT BAR ON ALL VEHICLES IS PREFERRED, BUT A ROTATING BEACON MAY BE USED INSTEAD.
- (11) IF WORK IS PERFORMED AT NIGHT, THE WORK AREA MUST BE ILLUMINATED WITH MACHINE AND/OR TOWER LIGHTS AS APPROVED BY THE ENGINEER.
- (12) ALL TRAFFIC CONTROL DEVICES WILL BE CONSIDERED INCIDENTAL TO THE PAY ITEMS FOR PAVEMENT MARKING AND MARKERS.
- (13) INFORMATIONAL SIGNS SHOULD BE ACTIVITY SPECIFIC, i.e. "PAINT CREW IN ROAD". SIGNS MAY BE RECTANGULAR OR DIAMOND SHAPE. SIGN SIZE SHOULD BE BASED ON THE MOTORIST ABILITY TO RECOGNIZE SIGN WHEN TRAVELING FIVE (5) MILES ABOVE POSTED SPEED LIMIT.
- (14) IF A LEAD VEHICLE IS ADDED TO OPERATION, IT SHOULD HAVE THE SAME ADVANCE WARNING SIGNS AS THE APPLICATION VEHICLE SHOWN BELOW.

LEGEND

-  PORTABLE SIGN. SIGNS MUST BE NCHRP-350 AND NCDOT APPROVED.
-  DIRECTION OF TRAFFIC FLOW
-  APPLICATION VEHICLE WITH LIGHT BAR
-  PROTECTION VEHICLE WITH TRUCK MOUNTED IMPACT ATTENUATOR (TMIA) AND LIGHT BAR (SEE ROADWAY STANDARD NO. 1165.01). TMIA MUST BE NCHRP-350 TEST LEVEL 3 (60+MPH) APPROVED.
-  FLASHING ARROW PANEL, TYPE "B" (60"X30" MIN.), "CAUTION MODE"



SIGN SHOULD BE ATTACHED TO THE FRONT OF THE APPLICATION VEHICLE



MOVING OPERATION CARAVAN

(OPERATIONS TRAVELING 3 MPH OR FASTER)
PLACING PAVEMENT MARKING OR MARKERS
ON TWO-LANE TWO-WAY ROADWAYS






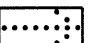

DRAWING NUMBER 6
IMPLEMENTATION DATE: 07/01/97
REVISED: 11/03/04

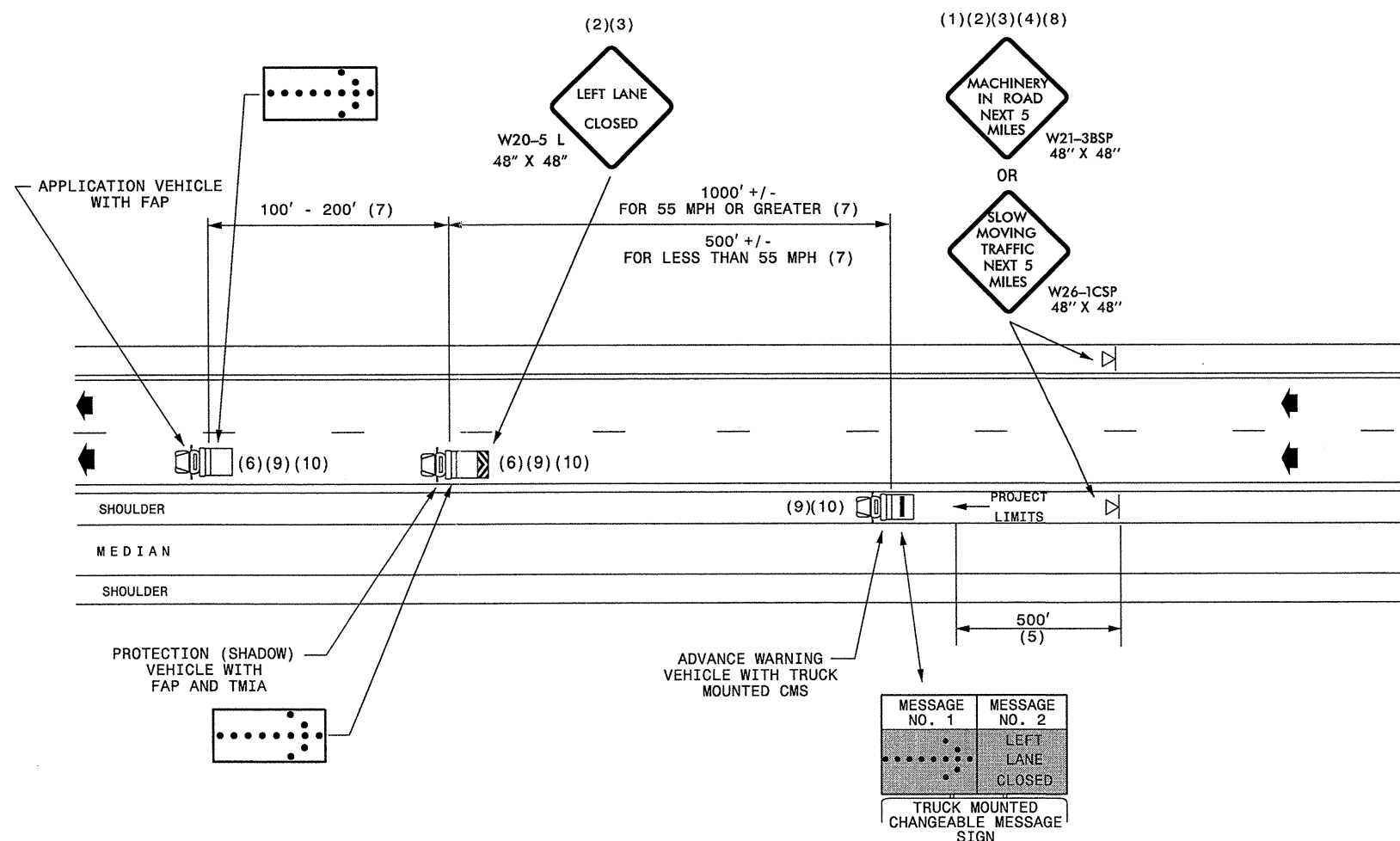
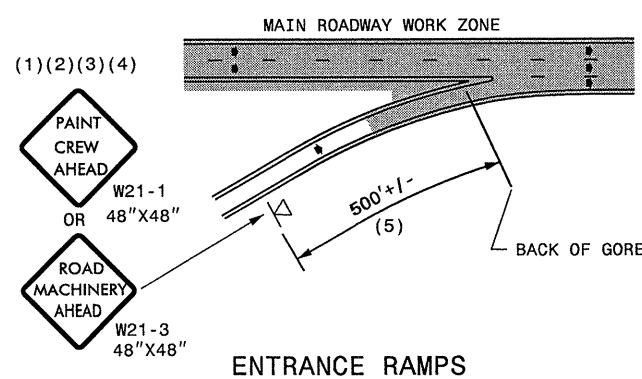
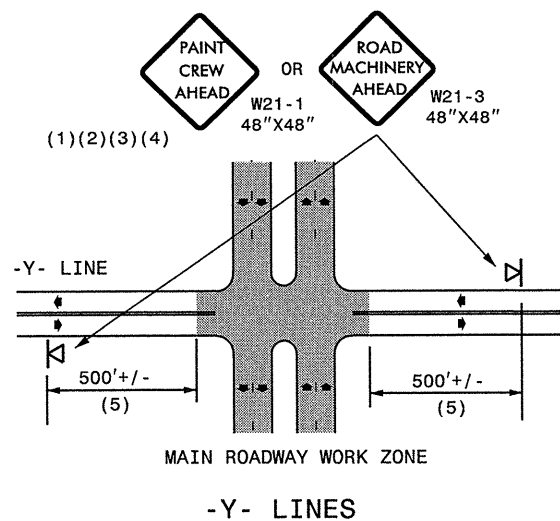
GENERAL NOTES

- (1) THE FOLLOWING OPTIONS MAY BE USED FOR ADVANCE WARNING SIGNS:
 - A. TRUCK MOUNTED SIGNS
 - B. TRUCK MOUNTED CHANGEABLE MESSAGE SIGN (CMS)
 - C. GROUND MOUNTED ADVANCE WARNING SIGNS (MUST CIRCLE TO PICK UP SIGNS)
 - D. GROUND MOUNTED CHANGEABLE MESSAGE SIGN (CMS) (MUST USE CIRCLE TO PICK UP SIGNS)
- (2) ALL ADVANCE WARNING SIGNS MUST BE 48" X 48" WITH FLUORESCENT ORANGE TYPE VII, VIII OR IX SHEETING. IF SPACE LIMITATIONS ON SHOULDER PROHIBIT A 48" X 48" SIGN, A SMALLER SIGN CAN BE USED WITH APPROVAL FROM ENGINEER.
- (3) SIGNS ON VEHICLES SHOULD BE MOUNTED A MINIMUM OF ONE (1) FOOT FROM THE GROUND AND SHOULD NOT BLOCK THE MOTORIST'S SIGHT OF THE FLASHING ARROW PANEL AND/OR LIGHTBAR.
- (4) GROUND MOUNTED ADVANCED WARNING SIGNS SHOULD BE MOUNTED A MINIMUM OF FIVE (5) FEET FROM THE GROUND TO BOTTOM OF SIGN.
- (5) SIGN SPACING SHOULD BE ADJUSTED FOR HORIZONTAL AND VERTICAL CURVES, ETC. TO IMPROVE SIGHT DISTANCES.

- (6) ADDITIONAL VEHICLES SHOULD BE USED IN WORK CARAVAN TO FACILITATE DRYING OF PAVEMENT MARKING MATERIAL (TMIA'S ARE OPTIONAL ON THESE ADDITIONAL VEHICLES). HOWEVER, THE FIRST VEHICLE MOTORISTS SEE IN THE TRAVEL LANE SHALL HAVE A TMIA.
- (7) ADJUST DISTANCE AS NEEDED TO PREVENT MOTORISTS FROM ENTERING SPACE BETWEEN THE APPLICATION AND PROTECTION VEHICLE. DISTANCE CAN BE LENGTHENED TO ACCOMODATE SIGHT DISTANCE NEEDS.
- (8) ROUND UP MILEAGE TO NEXT WHOLE MILE. WORK ZONE SHOULD NOT EXCEED FIVE (5) MILES IN LENGTH.
- (9) RADIO COMMUNICATION BETWEEN VEHICLES IS REQUIRED.
- (10) USE OF A LIGHT BAR ON ALL VEHICLES IS PREFERRED, BUT A ROTATING BEACON MAY BE USED INSTEAD.
- (11) IF WORK IS PERFORMED AT NIGHT, THE WORK AREA MUST BE ILLUMINATED WITH MACHINE AND/OR TOWER LIGHTS AS APPROVED BY THE ENGINEER.
- (12) ALL TRAFFIC CONTROL DEVICES WILL BE CONSIDERED INCIDENTAL TO THE PAY ITEMS FOR PAVEMENT MARKING AND MARKERS.

LEGEND

-  PORTABLE SIGN. SIGNS MUST BE NCHRP-350 AND NCDOT APPROVED.
-  DIRECTION OF TRAFFIC FLOW
-  APPLICATION VEHICLE WITH LIGHT BAR
-  PROTECTION VEHICLE WITH TRUCK MOUNTED IMPACT ATTENUATOR (TMIA) AND LIGHT BAR (SEE ROADWAY STANDARD NO. 1165.01). TMIA MUST BE NCHRP-350 TEST LEVEL 3 (60+MPH) APPROVED.
-  ADVANCE WARNING VEHICLE WITH TRUCK MOUNTED CHANGEABLE MESSAGE SIGN (CMS) AND LIGHT BAR. MESSAGE SIGN LETTER HEIGHT SHOULD BE A MINIMUM OF 10 INCHES.
-  FLASHING ARROW PANEL, TYPE "B" (60"X30" MIN.), APPROPRIATE DIRECTION INDICATED
-  CHANGEABLE MESSAGE SIGN



MOVING OPERATION CARAVAN

(OPERATIONS TRAVELING 3 MPH OR FASTER)
PLACING PAVEMENT MARKING OR MARKERS
ON NON-INTERSTATE MULTILANE DIVIDED ROADWAYS

DRAWING NUMBER 7
IMPLEMENTATION DATE: 07/01/97
REVISED: 11/03/04